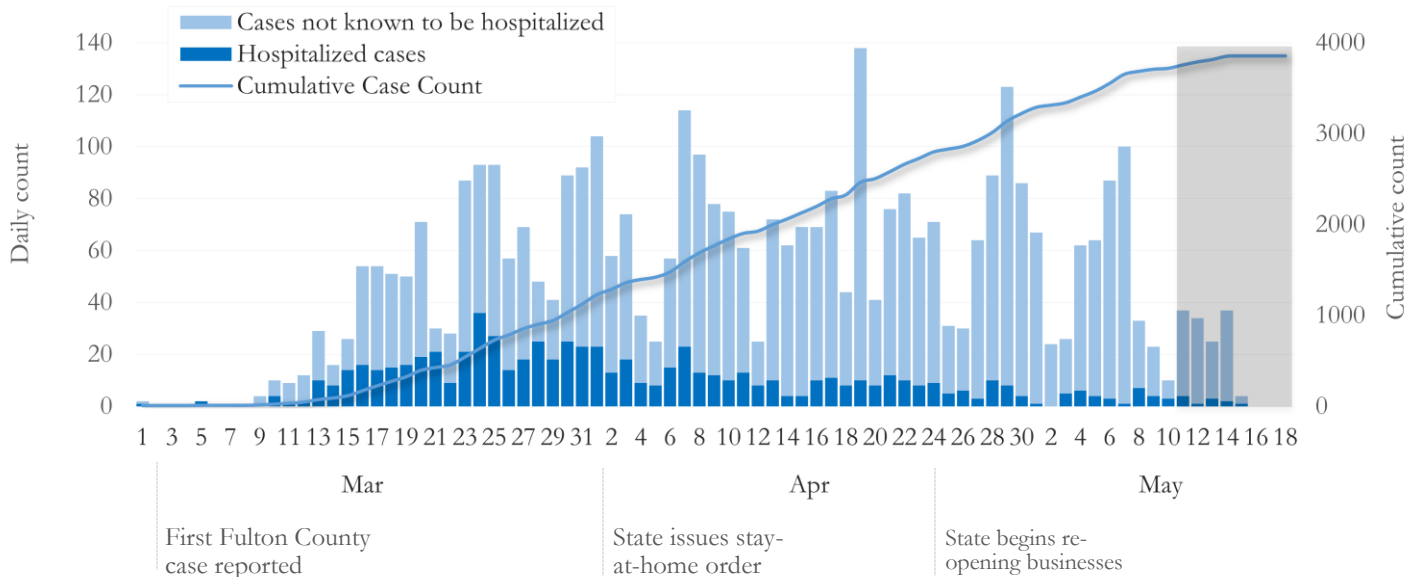


SUMMARY

- As of May 18, 2020, Fulton County has recorded **3,856** cases of the 2019 novel coronavirus (COVID-19) and **165** deaths.
- The central portion of the county (Atlanta metro) accounts for 45% of the cumulative case count while the northern and southern parts of the county combined account for 42% of the confirmed cases in the county.
- By city, cumulative COVID-19 diagnoses rates have ranged from 129.1 per 100,000 persons (Johns Creek) to 691.8 per 100,000 persons (Union City).
- Among all persons diagnosed with COVID-19 in Fulton County, 18% have needed hospitalization and 4% have died.

Daily and Cumulative COVID-19 diagnoses in Fulton County, GA (5/18/20)



*Counts shown reflect the number of confirmed cases as of 5/18/20 using the date of first positive sample collection. Where date of sample collection was not available or missing, the date of report creation in GA SENDSS was used instead. ****Note:** All data reported are preliminary and subject to change. Delays in data reporting may cause changes in data counts, particularly in the shaded portion.

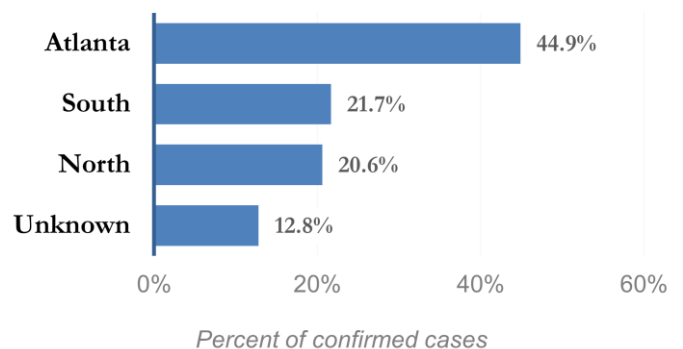
DISTRIBUTION OF COVID-19 DIAGNOSES BY REGION

| Fulton Region | % of total cases in Fulton county |
|------------------------|-----------------------------------|
| Atlanta | 44.9% |
| North ¹ | 20.6% |
| South ² | 21.7% |
| Unincorporated/Unknown | 12.8% |

¹Includes all Fulton County cities north of Atlanta metro (Alpharetta, Milton, Johns Creek, Roswell, Sandy Springs, Mountain Park)

²Includes all cities south of Atlanta (College Park, Chattahoochee Hills, East Point, Hapeville, Palmetto, South Fulton, Fairburn, Union City)

Distribution of COVID 19 cases by Region (5/18/20)

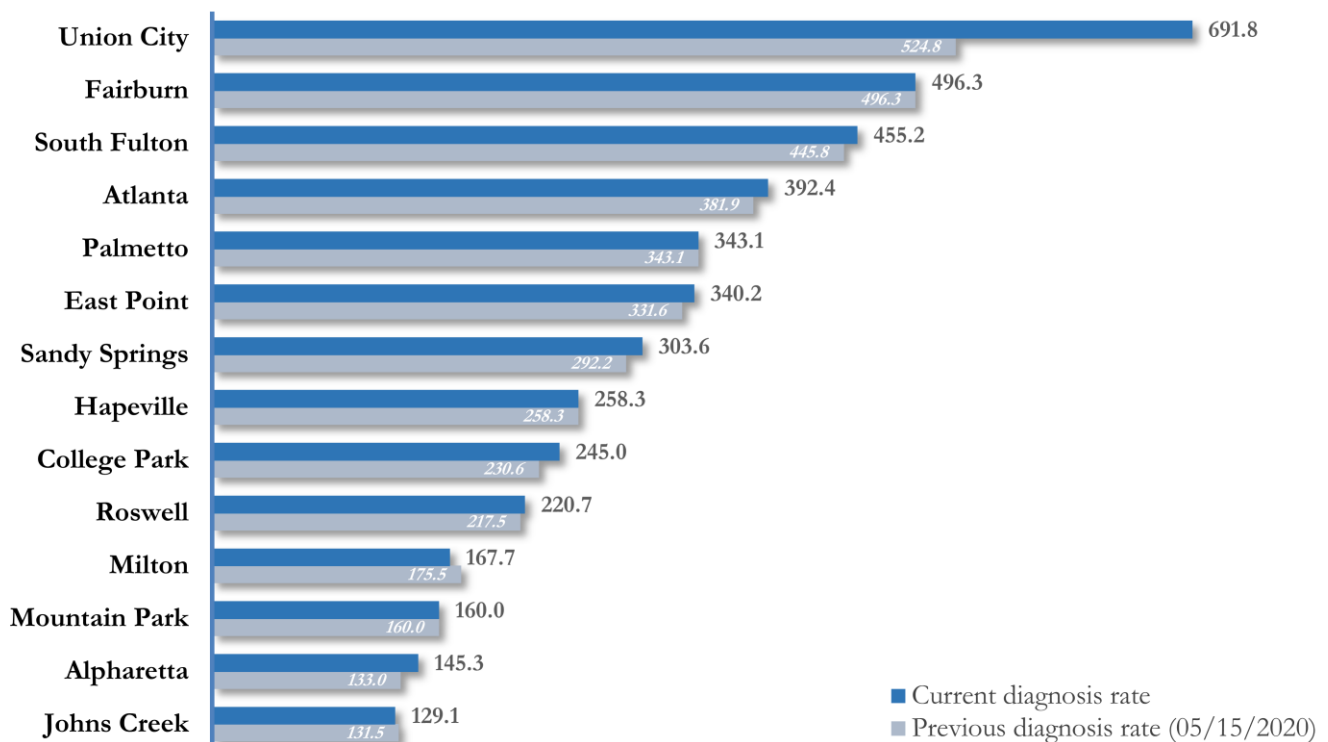


COVID-19 CASE COUNTS AND RATES BY CITY

| | Previous Count (5/15/2020) | Current Count (5/18/20) | Percent of Current Total | % Change | COVID-19 Diagnoses Rate (per 100,000 persons)* |
|---------------|-------------------------------|----------------------------|-----------------------------|-------------|---|
| Atlanta | 1685 | 1731 | 44.9% | 2.7% | 392.4 |
| South Fulton | 424 | 433 | 11.2% | 2.1% | 455.2 |
| Sandy Springs | 308 | 320 | 8.3% | 3.9% | 303.6 |
| Roswell | 205 | 208 | 5.4% | 1.5% | 220.7 |
| East Point | 116 | 119 | 3.1% | 2.6% | 340.2 |
| Johns Creek | 110 | 108 | 2.8% | -1.8%** | 129.1 |
| Union City | 110 | 145 | 3.8% | 31.8% | 691.8 |
| Alpharetta | 86 | 94 | 2.4% | 9.3% | 145.3 |
| Milton | 67 | 64 | 1.7% | -4.5%** | 167.7 |
| Fairburn | 73 | 73 | 1.9% | 0.0% | 496.3 |
| College Park | 32 | 34 | 0.9% | 6.3% | 245.0 |
| Palmetto | 15 | 15 | 0.4% | 0.0% | 343.1 |
| Hapeville | 17 | 17 | 0.4% | 0.0% | 258.3 |
| Mountain Park | <10 | <10 | 0.0% | 0.0% | 160.0 |
| Unknown | 480 | 494 | 12.8% | - | - |

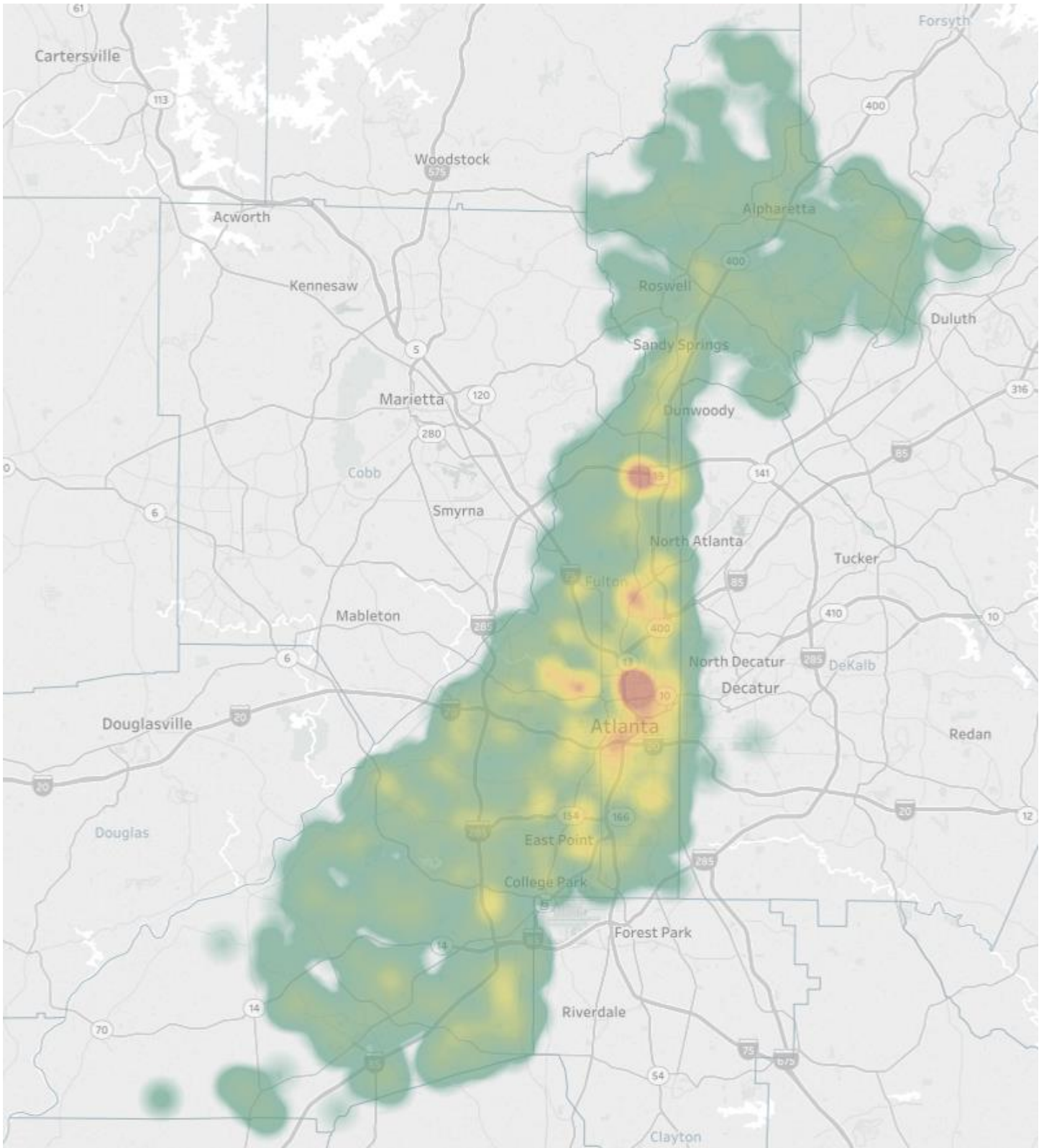
*Population estimates from US Census Bureau used to calculate diagnoses rates. ** Data cleaning (either during the detailed data collection that takes place at case interviews or during the geo-coding process) may lead to reassignment of few cases from one territory to another based on their corrected addresses and these may appear as “decreases” when compared to the previous day’s count. These do not reflect errors in the data collection or analysis process but only reflect the minor day-to-day fluctuations in case counts that arise in an evolving public health database like COVID’s. **Note:** All data reported are preliminary and subject to change.

COVID-19 Cumulative Diagnoses Rate in Fulton County by City (05/18/20)



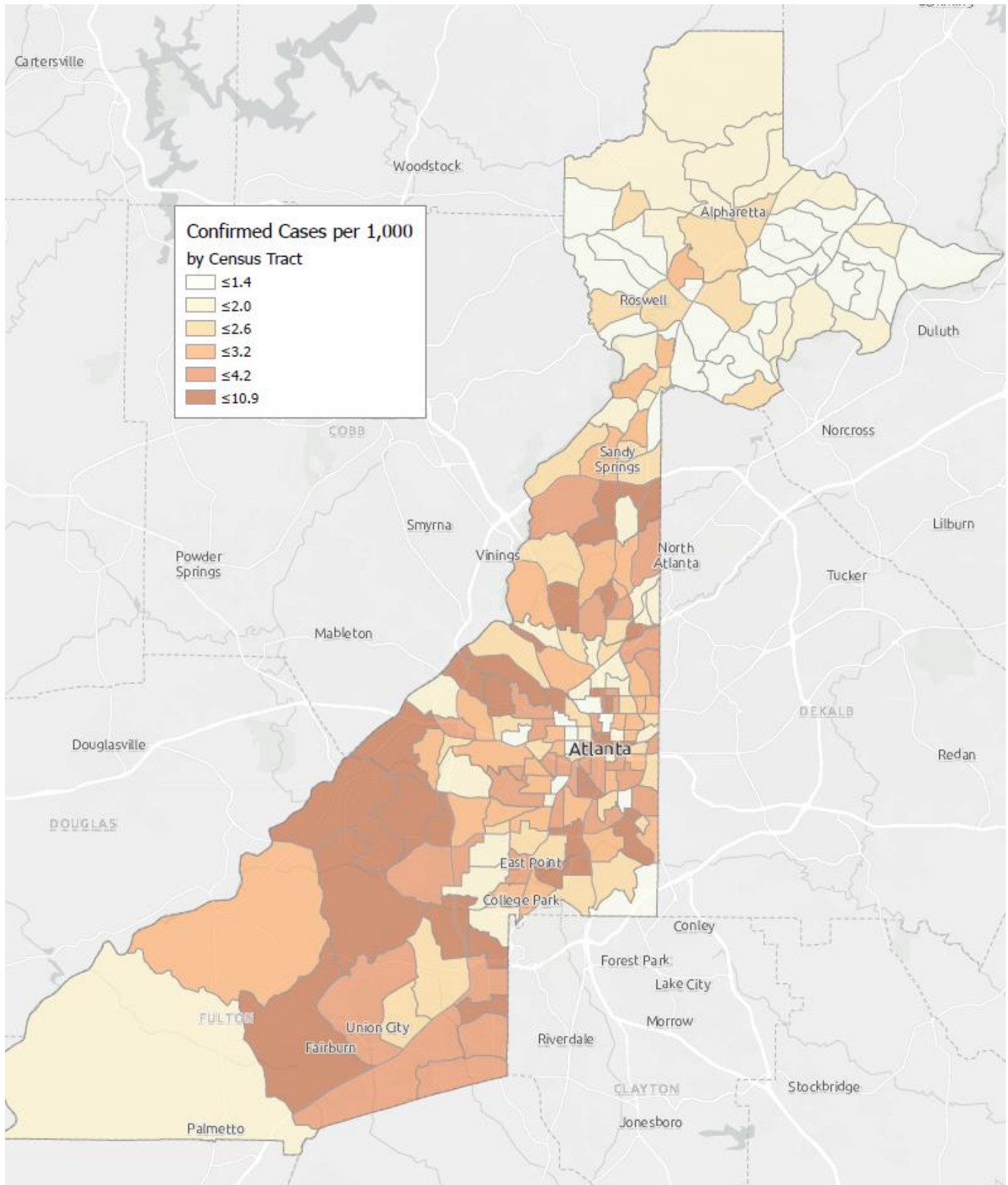
*Rates shown are per 100,000 persons **Note:** Increased testing in specific locations may cause sharp increases in the cumulative rate of COVID-19 diagnoses in such territories. All data shown are preliminary and are subject to change as testing results get updated.

Figure 4. Density Map of COVID-19 Cases in Fulton County (5/18/20)



NB. Data used excludes the outbreak-related cases diagnosed at long-term care facilities and reflects the current geographical distribution of COVID19 diagnoses in the general Fulton County community.

Figure 5. COVID19 Diagnosis Rates in Fulton County by Census Tract (5/18/2020)



*Rate (per 1000 population)

NB. Data used excludes the outbreak-related cases diagnosed at long-term care facilities and reflects the current geographical distribution of COVID19 diagnoses in

COVID-19 CASE COUNTS BY ZIP CODE

| ZIP code | Previous Count (5/15/2020) | Current Count (5/18/20) | Percent of Current Total | % Change |
|----------|-------------------------------|----------------------------|-----------------------------|-------------|
| 30331 | 309 | 317 | 8.2% | 2.6% |
| 30318 | 217 | 224 | 5.8% | 3.2% |
| 30349 | 214 | 221 | 5.7% | 3.3% |
| 30213 | 161 | 161 | 4.2% | 0.0% |
| 30315 | 125 | 126 | 3.3% | 0.8% |
| 30344 | 109 | 112 | 2.9% | 2.8% |
| 30311 | 112 | 114 | 3.0% | 1.8% |
| 30342 | 157 | 162 | 4.2% | 3.2% |
| 30314 | 73 | 85 | 2.2% | 16.4% |
| 30310 | 108 | 114 | 3.0% | 5.6% |
| 30308 | 76 | 76 | 2.0% | 0.0% |
| 30022 | 82 | 83 | 2.2% | 1.2% |
| 30327 | 85 | 88 | 2.3% | 3.5% |
| 30004 | 86 | 88 | 2.3% | 2.3% |
| 30309 | 127 | 130 | 3.4% | 2.4% |
| 30076 | 75 | 76 | 2.0% | 1.3% |
| 30291 | 141 | 174 | 4.5% | 23.4% |
| 30350 | 71 | 71 | 1.8% | 0.0% |
| 30075 | 121 | 123 | 3.2% | 1.7% |
| 30328 | 84 | 86 | 2.2% | 2.4% |
| 30316 | 38 | 39 | 1.0% | 2.6% |
| 30312 | 205 | 204 | 5.3% | -0.5%** |
| 30005 | 47 | 47 | 1.2% | 0.0% |
| 30305 | 85 | 86 | 2.2% | 1.2% |
| 30306 | 48 | 48 | 1.2% | 0.0% |
| 30324 | 76 | 83 | 2.2% | 9.2% |
| 30337 | 30 | 32 | 0.8% | 6.7% |
| 30009 | 38 | 41 | 1.1% | 7.9% |
| 30313 | 34 | 34 | 0.9% | 0.0% |
| 30326 | 24 | 26 | 0.7% | 8.3% |
| 30097 | 37 | 37 | 1.0% | 0.0% |
| 30354 | 34 | 34 | 0.9% | 0.0% |
| 30303 | 30 | 30 | 0.8% | 0.0% |
| 30339 | 12 | 13 | 0.3% | 8.3% |
| 30268 | 21 | 21 | 0.5% | 0.0% |
| 30307 | 16 | 16 | 0.4% | 0.0% |
| 30319 | 25 | 26 | 0.7% | 4.0% |
| 30336 | 12 | 12 | 0.3% | 0.0% |
| 30296 | 11 | 11 | 0.3% | 0.0% |
| 30363 | <10 | <10 | 0.2% | - |
| 30301 | <10 | <10 | 0.1% | - |
| 30345 | <10 | <10 | 0.2% | - |
| 31131 | <10 | <10 | 0.1% | - |
| 30023 | <10 | <10 | 0.1% | - |
| 30080 | <10 | <10 | 0.1% | - |
| 30135 | <10 | <10 | 0.0% | - |

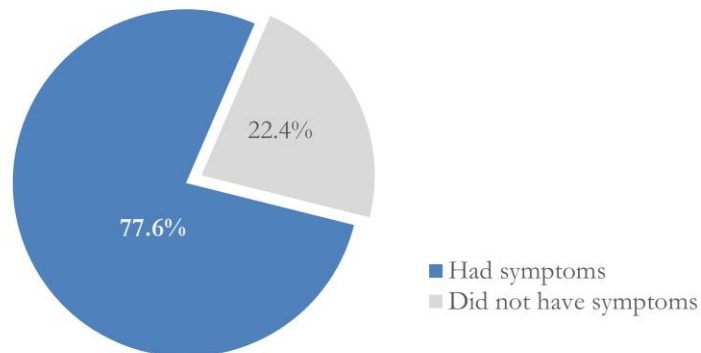
| | | | | |
|---------|-----|-----|------|------|
| 30138 | <10 | <10 | 0.0% | - |
| 30139 | <10 | <10 | 0.0% | - |
| 30321 | <10 | <10 | 0.1% | - |
| 30340 | <10 | <10 | 0.1% | - |
| 30341 | 13 | 14 | 0.4% | 7.7% |
| 30358 | <10 | <10 | 0.0% | - |
| 30374 | 18 | 18 | 0.5% | 0.0% |
| 30606 | <10 | <10 | 0.0% | - |
| 31150 | <10 | <10 | 0.0% | - |
| 30024 | <10 | <10 | 0.0% | - |
| 30098 | <10 | <10 | 0.0% | - |
| 30334 | <10 | <10 | 0.1% | - |
| 30338 | <10 | <10 | 0.1% | - |
| Unknown | 302 | 312 | 8.1% | - |

** Data cleaning (either during the detailed data collection that takes place at case interviews or during the geo-coding process) may lead to reassignment of few cases from one territory to another based on their corrected addresses and these may appear as “decreases” when compared to the previous day’s count.. These do not reflect errors in the data collection or analyses process but only reflect the minor day-to-day fluctuations in case counts that arise in an evolving public health database like COVID’s. **Note:** All data reported are preliminary and subject to change.

REPORTING SYMPTOMS

People with COVID-19 have reported a wide range of symptoms ranging from mild symptoms to severe illness. Symptoms may appear 2-14 days after exposure to the virus. Symptoms reported include: cough, shortness of breath/difficulty breathing, fever, chills, repeated shaking with chills, muscle pain, headache, sore throat, new loss of taste or smell – Centers for Disease Control and Prevention (CDC) <https://www.cdc.gov/coronavirus/2019-ncov/symptoms-testing/symptoms.html>

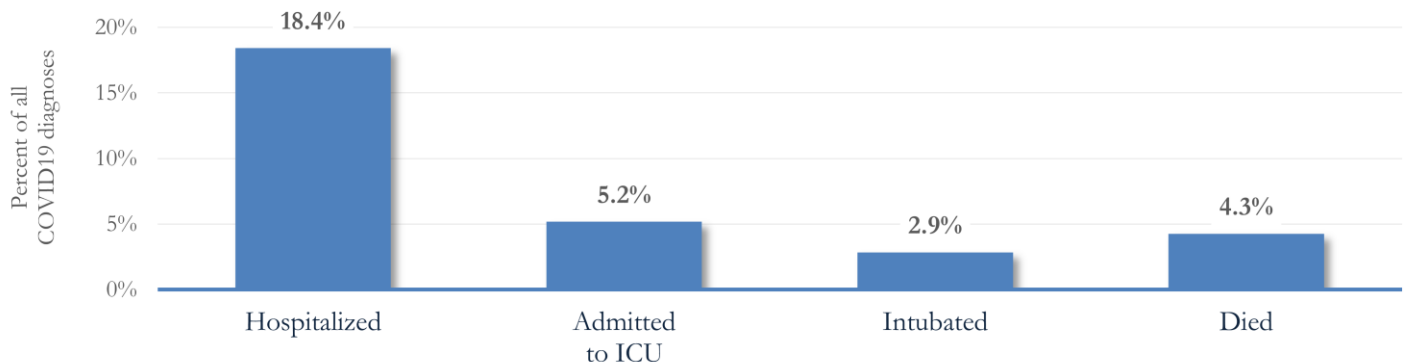
Figure 6. Proportion reporting Symptoms in Fulton County (5/18/20)



COVID-19 cases who have been case interviewed or had medical charts reviewed as at 5/18/20 only

HOSPITALIZATIONS AND DEATHS

Figure 7. Hospitalizations, ICU Admissions and Deaths among COVID-19 Diagnoses in Fulton County (5/18/20)



DEMOGRAPHIC DISTRIBUTION & MORBIDITY AND MORTALITY TRENDS

| | North Fulton Cities ¹ Count (%) | Atlanta Count (%) | South Fulton Cities ² Count (%) | Unknown Count (%) | All Fulton Count (%) |
|------------------------|---|----------------------|---|----------------------|-------------------------|
| Total COVID cases | 795 | 1731 | 836 | 494 | 3856 |
| Gender: Female | 390 (49.1%) | 814 (47.0%) | 497 (59.4%) | 263 (53.2%) | 1964 (50.9%) |
| Male | 399 (50.2%) | 906 (52.3%) | 334 (40.0%) | 217 (43.9%) | 1856 (48.1%) |
| Unknown | <10 | 11 (0.6%) | <10 | 14 (2.8%) | 36 (0.9%) |
| Age: <15 | 10 (1.3%) | 13 (0.8%) | <10 | <10 | 39 (1.0%) |
| 15-24 | 66 (8.3%) | 89 (5.1%) | 41 (4.9%) | 30 (6.1%) | 226 (5.9%) |
| 25-34 | 110 (13.8%) | 279 (16.1%) | 81 (9.7%) | 93 (18.8%) | 563 (14.6%) |
| 35-44 | 133 (16.7%) | 274 (15.8%) | 124 (14.8%) | 85 (17.2%) | 616 (16.0%) |
| 45-54 | 157 (19.7%) | 243 (14.0%) | 161 (19.3%) | 81 (16.4%) | 642 (16.6%) |
| 55-64 | 139 (17.5%) | 294 (17.0%) | 143 (17.1%) | 77 (15.6%) | 653 (16.9%) |
| >65 | 178 (22.4%) | 522 (30.2%) | 276 (33.0%) | 114 (23.1%) | 1090 (28.3%) |
| Unknown | <10 | 17 (1.0%) | <10 | <10 | 27 (0.7%) |
| Race: Asian, NH | 42 (5.3%) | 20 (1.2%) | <10 | <10 | 72 (1.9%) |
| Black, NH | 122 (15.3%) | 929 (53.7%) | 620 (74.2%) | 172 (34.8%) | 1843 (47.8%) |
| White, NH | 296 (37.2%) | 274 (15.8%) | 60 (7.2%) | 71 (14.4%) | 701 (18.2%) |
| Hispanic | 84 (10.6%) | 47 (2.7%) | 27 (3.2%) | 28 (5.7%) | 186 (4.8%) |
| Other, NH | 27 (3.4%) | 33 (1.9%) | 12 (1.4%) | 12 (2.4%) | 84 (2.2%) |
| Unknown | 224 (28.2%) | 428 (24.7%) | 116 (13.9%) | 202 (40.9%) | 970 (25.2%) |

¹Includes all Fulton County cities north of Atlanta metro (Alpharetta, Milton, Johns Creek, Roswell, Sandy Springs, Mountain Park) ²Includes all cities south of Atlanta (College Park, Chattahoochee Hills, East Point, Hapeville, Palmetto, South Fulton, Fairburn, Union City). **Note:** All data reported are preliminary and subject to change.

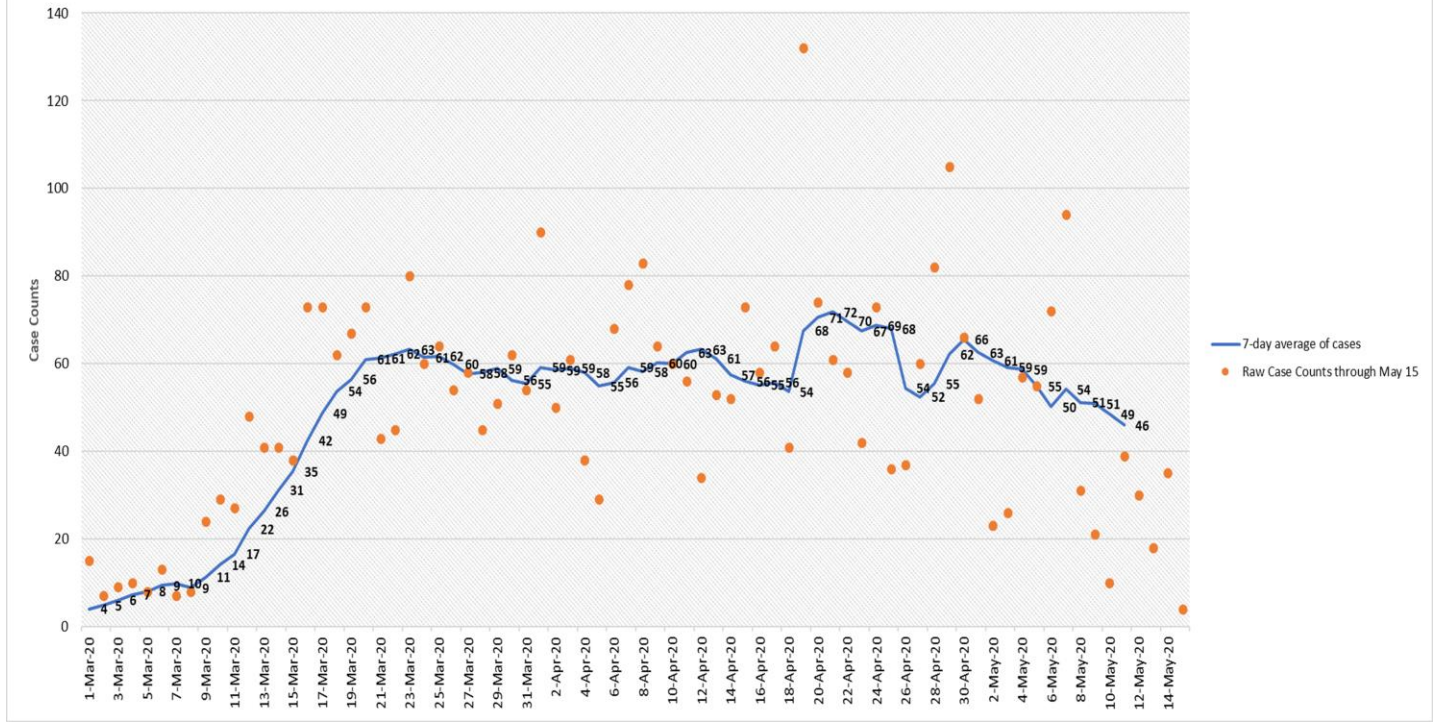
Daily Percent Increase for Atlanta Metro Districts (Averaged over 7 days)



*Chart to be updated weekly.

New COVID-19 Cases in Fulton County Daily (Averaged over 7 days)

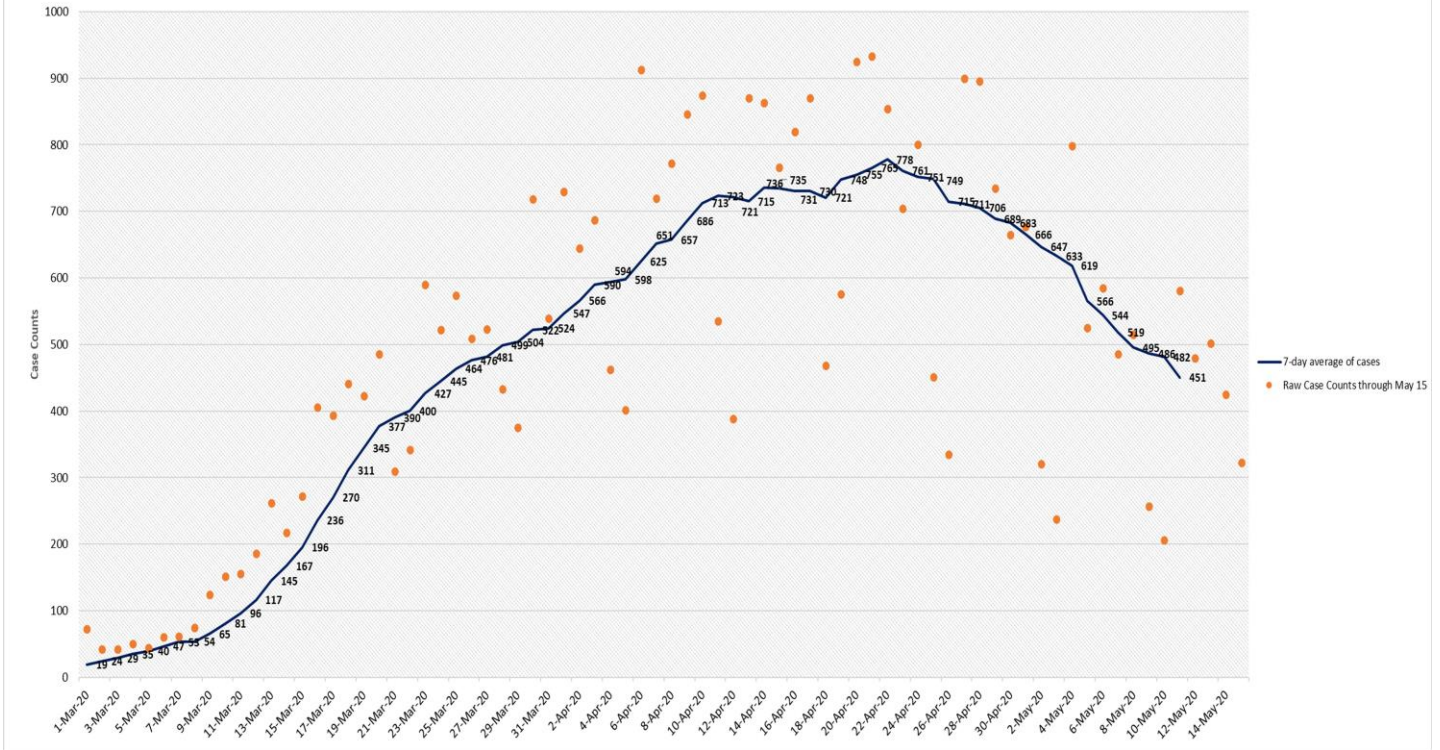
March 01, 2020 to May 11, 2020



*Date is the earliest date when comparing the date of symptom onset, date of positive sample collection, and date of report for each PUI.

New COVID-19 Cases in Georgia Daily (Averaged over 7 days)

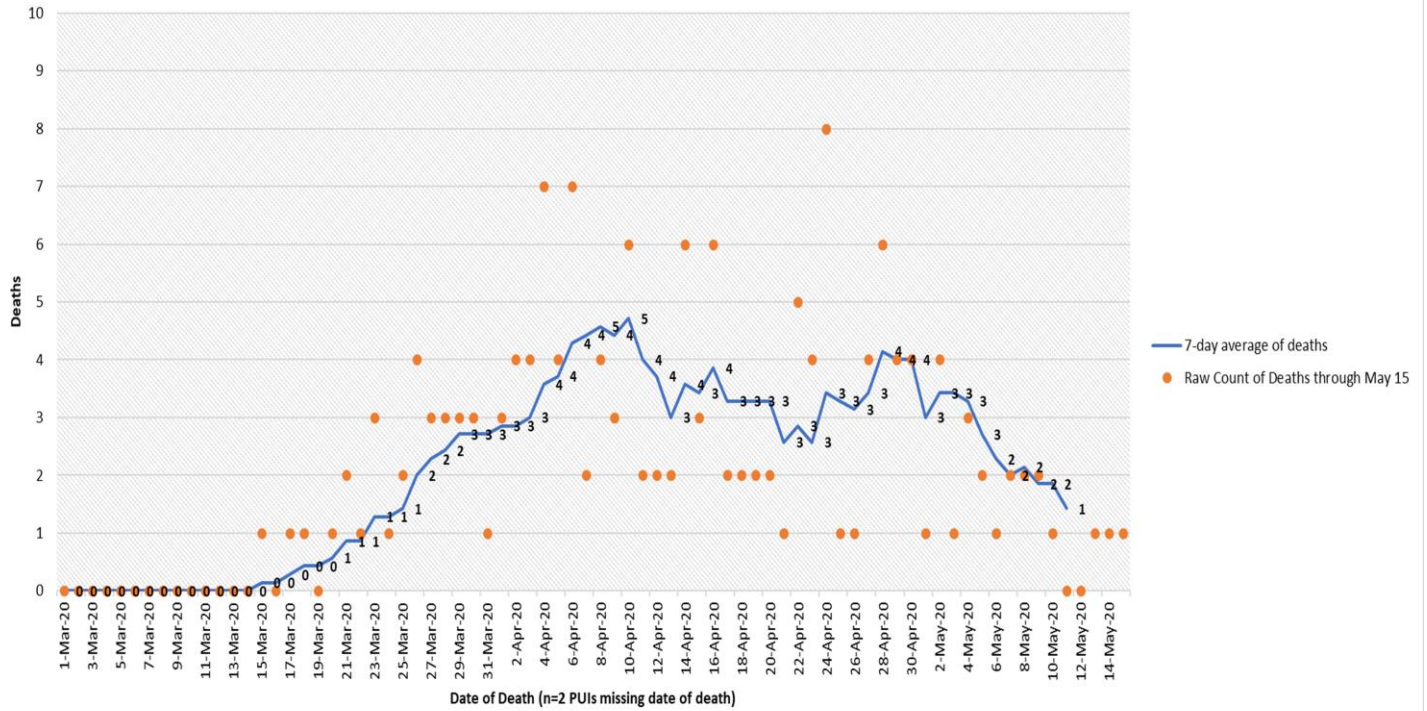
March 01, 2020 to May 11, 2020



*Date is the earliest date when comparing the date of symptom onset, date of positive sample collection, and date of report for each PUI.

COVID-19 Deaths in Fulton County Daily (Averaged over 7 days)

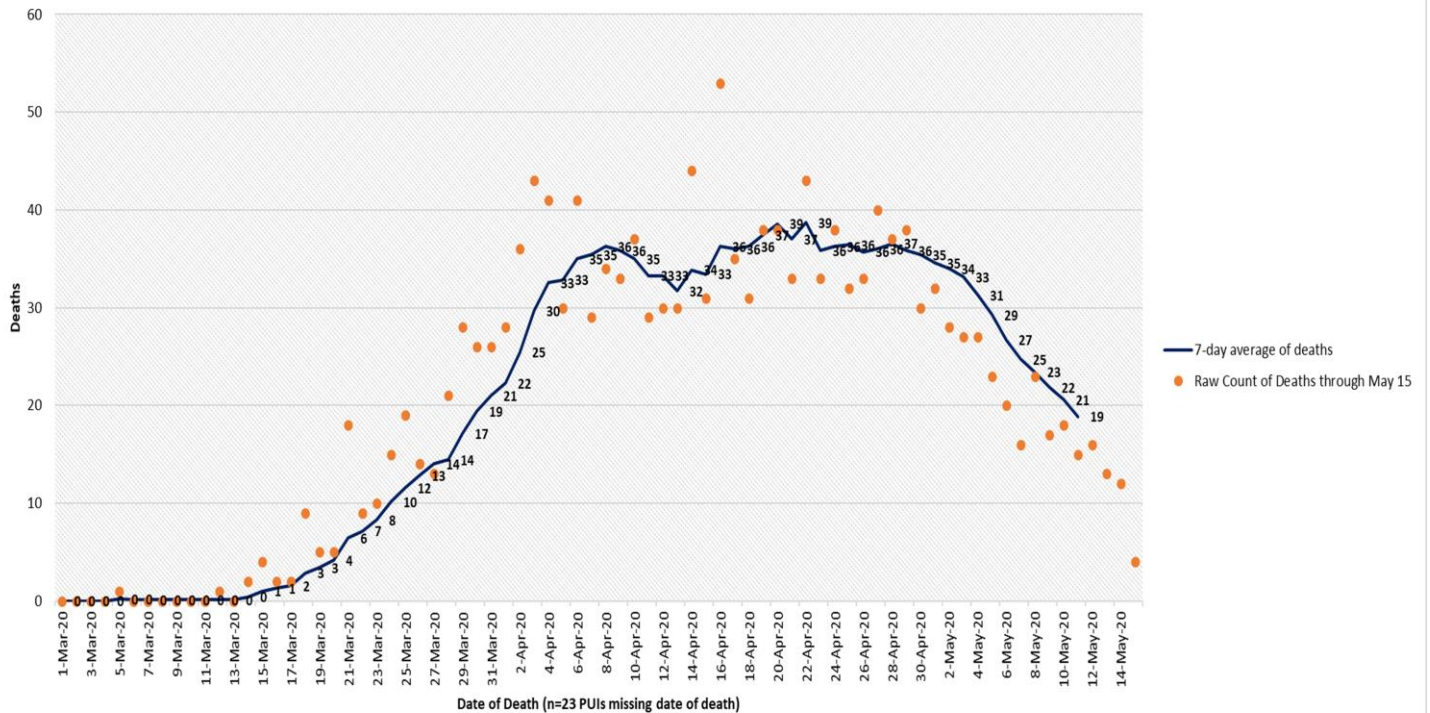
March 01, 2020 to May 11, 2020



*There were no deaths reported in SENDSS prior to March 01, 2020.

COVID-19 Deaths in Georgia Daily (Averaged over 7 days)

March 01, 2020 to May 11, 2020



*There were no deaths reported in SENDSS prior to March 01, 2020.