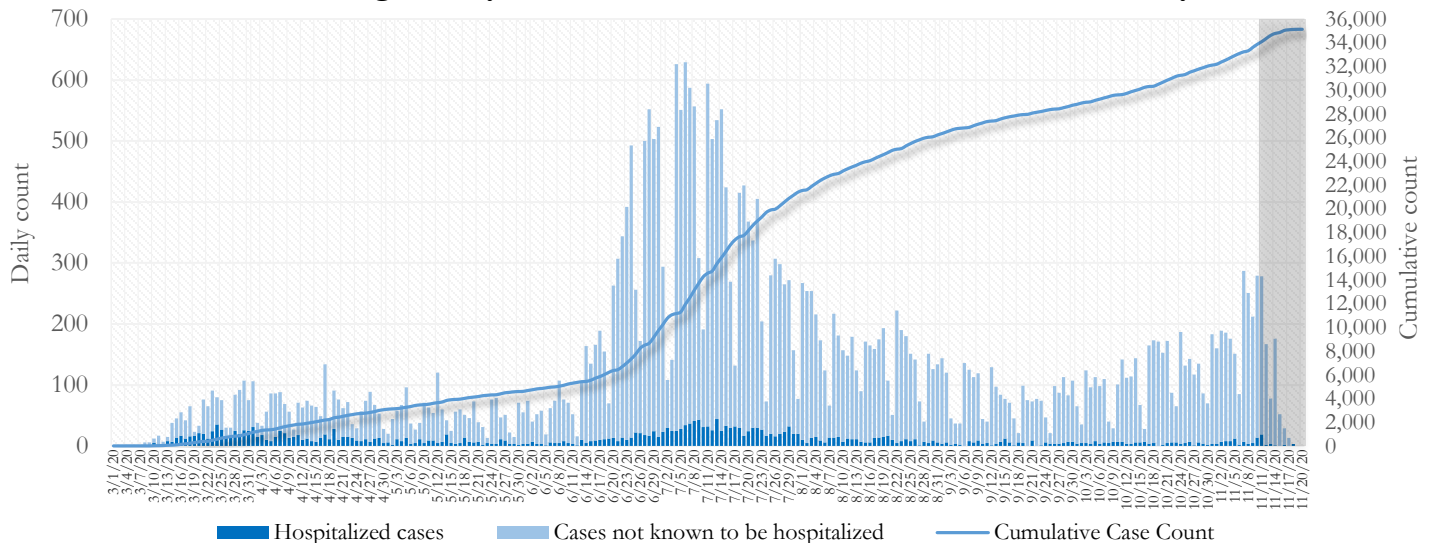


## SUMMARY

- As of November 20, 2020, Fulton County has recorded **35,149 cases of the 2019 novel coronavirus (COVID-19)** and **653 confirmed COVID-19 deaths**. 81 deaths are currently being reviewed by GA DPH to confirm cause of death.
- Of the **2,723 new cases** between October 31 and November 13, the central portion of the county (Atlanta) accounted for 43% while the northern and southern parts accounted for 37% and 16% respectively.
- By city, new COVID-19 case rates range from 194.6 per 100,000 persons (College Park) to 480.0 per 100,000 persons (Mountain Park – see footnote on pg. 2). **[Fulton County Diagnoses Rates (per 100,000 persons): Cumulative – 3197.7; Incidence –247.7]**. See map showing incidence case rate by ZIP code on Pg.17.
- Among all persons diagnosed with COVID-19 in Fulton County since June 1, **6.0% required hospitalization and 1.2% died**.
- Of all testing done in Fulton County between October 26 and November 8, the **percent positivity rate was 5.3%**.

**Fig 1. Daily and Cumulative COVID-19 cases in Fulton County, GA**



\*Counts shown reflect the number of confirmed cases as of 6:30 pm on 11/19/20 using the date of first positive sample collection. Where date of sample collection was not available or missing, the date of report creation in GA SENDSS was used instead. **Note:** Delays in data reporting may cause changes in data counts, particularly in the shaded portion. Data throughout this report are preliminary and subject to ongoing data cleaning processes, and thus are subject to change. This report includes data on confirmed PCR tests only. For data on antigen testing, see the [GA DPH County Indicator Reports here](#).

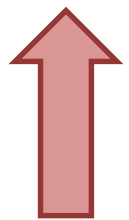
## DISTRIBUTION OF COVID-19 CASES BY REGION

**New cases:** 43% of the new COVID-19 cases in the past 2 weeks occurred in Atlanta while 37% and 16% occurred in the Northern and Southern regions of the county respectively.

Fulton Region	% Cumulative count	% New cases*
Atlanta	44.3%	42.7%
North <sup>1</sup>	29.5%	37.3%
South <sup>2</sup>	20.0%	16.1%
Unincorporated/Unknown	6.2%	3.8%

<sup>1</sup>Includes all Fulton County cities north of Atlanta (Alpharetta, Johns Creek, Milton, Mountain Park, Roswell, Sandy Springs) | <sup>2</sup>Includes all cities south of Atlanta (Chattahoochee Hills, College Park, East Point, Fairburn, Hapeville, Palmetto, South Fulton, and Union City) \***New cases:** Cases diagnosed in the past 2 weeks only (between 10/31/20 – 11/13/20).

**In the recent two week reporting period (10/31-11/13), there were more new cases of COVID-19 in Fulton County than the previous two weeks (10/17-10/30).**



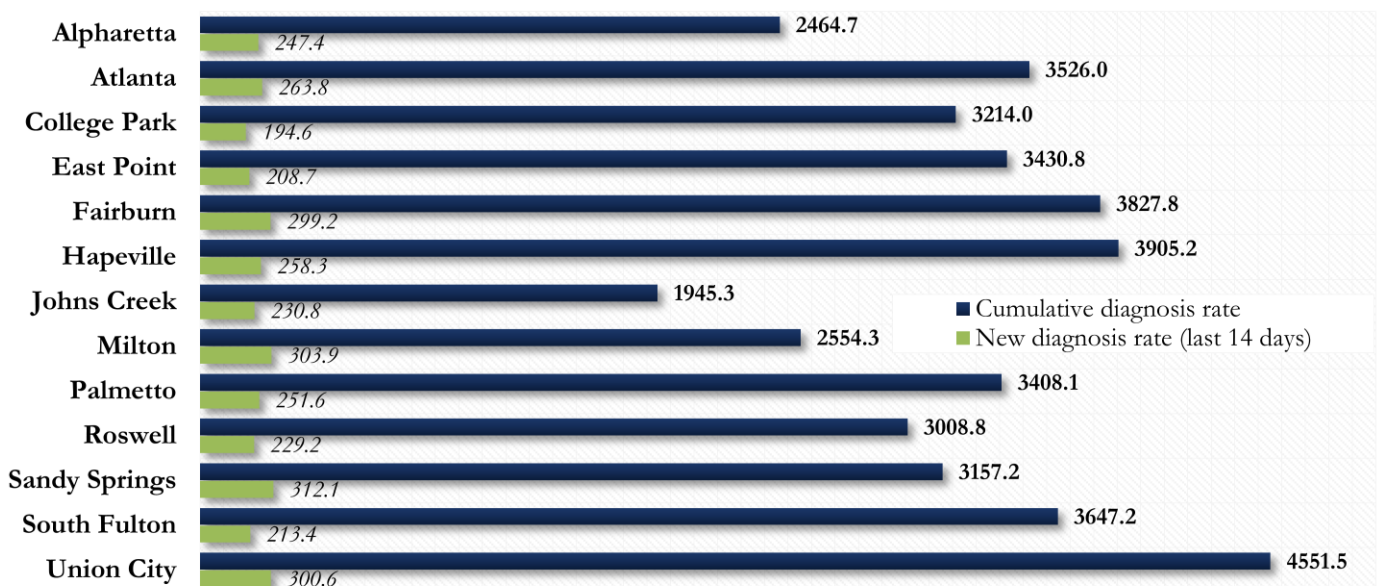
\*Delayed a week to account for testing results turnaround time.

## COVID-19 CASE COUNTS AND RATES BY CITY

	Prior (11/17/20)	Current Total (11/20/20)			New Cases (Period: 10/17/20 – 11/13/20) <sup>1</sup>			
	Count	Count	%	Cum. Rate <sup>2</sup>	Recent 14 d. (10/31–11/13)	Prior 14 d. (10/17–10/30)	% change <sup>3</sup>	Rate <sup>4</sup> (Last 14 d).
Alpharetta	1566	1594	4.6%	2464.7	160	89	↑ 79.8%	247.4
Atlanta	15312	15556	44.9%	3526.0	1164	826	↑ 40.9%	263.8
Chattahoochee Hills	1	1	0.0%	-	0	0	-	-
College Park	440	446	1.3%	3214.0	27	22	↑ 22.7%	194.6
East Point	1187	1200	3.5%	3430.8	73	52	↑ 40.4%	208.7
Fairburn	549	563	1.6%	3827.8	44	21	↑ 109.5%	299.2
Hapeville	254	257	0.7%	3905.2	17	16	↑ 6.3%	258.3
Johns Creek	1593	1627	4.7%	1945.3	193	114	↑ 69.3%	230.8
Milton	958	975	2.8%	2554.3	116	53	↑ 118.9%	303.9
Mountain Park	10	10	0.0%	1600.0	<10	0	-	480.0 <sup>5</sup>
Palmetto	147	149	0.4%	3408.1	11	<10	↑ 175.0%	251.6
Roswell	2800	2836	8.2%	3008.8	216	130	↑ 66.2%	229.2
Sandy Springs	3283	3328	9.6%	3157.2	329	193	↑ 70.5%	312.1
South Fulton	3426	3469	10.0%	3647.2	203	167	↑ 21.6%	213.4
Union City	933	954	2.8%	4551.5	63	38	↑ 65.8%	300.6
Unknown	2156	1650	4.8%	-	104	76	-	-

<sup>1</sup>**New cases:** Cases diagnosed in most recent 28 days (based on reported dates of positive sample collection). To allow for lag in reporting results of new diagnoses from samples collected in the most recent week, data used for incident diagnoses analyses were moved back by one week. <sup>2</sup>**Cumulative diagnosis rate:** Population estimates from US Census Bureau used to calculate cumulative diagnoses rate. All rates shown are per 100,000 persons. <sup>3</sup>**% change:** These reflect the percentage increase or decrease in new diagnoses between the 14 days preceding the most recent 7 days and the 14 days preceding that. <sup>4</sup>**(Incidence) Rate:** Rate of new diagnoses in the last 14 day period preceding the immediate past week. **\*\*Data cleaning** (either during case interviews or address geo-coding) may lead to reassignment of few cases from one territory to another based on their corrected addresses. These may appear as “decreases” when compared to the previous day’s count. These do not reflect errors in the data collection or analysis process but only reflect the minor day-to-day fluctuations in case counts that arise in an evolving public health database like COVID’s. <sup>5</sup>Incidence rate is skewed high due to small population. **Note:** All data reported are preliminary and subject to change.

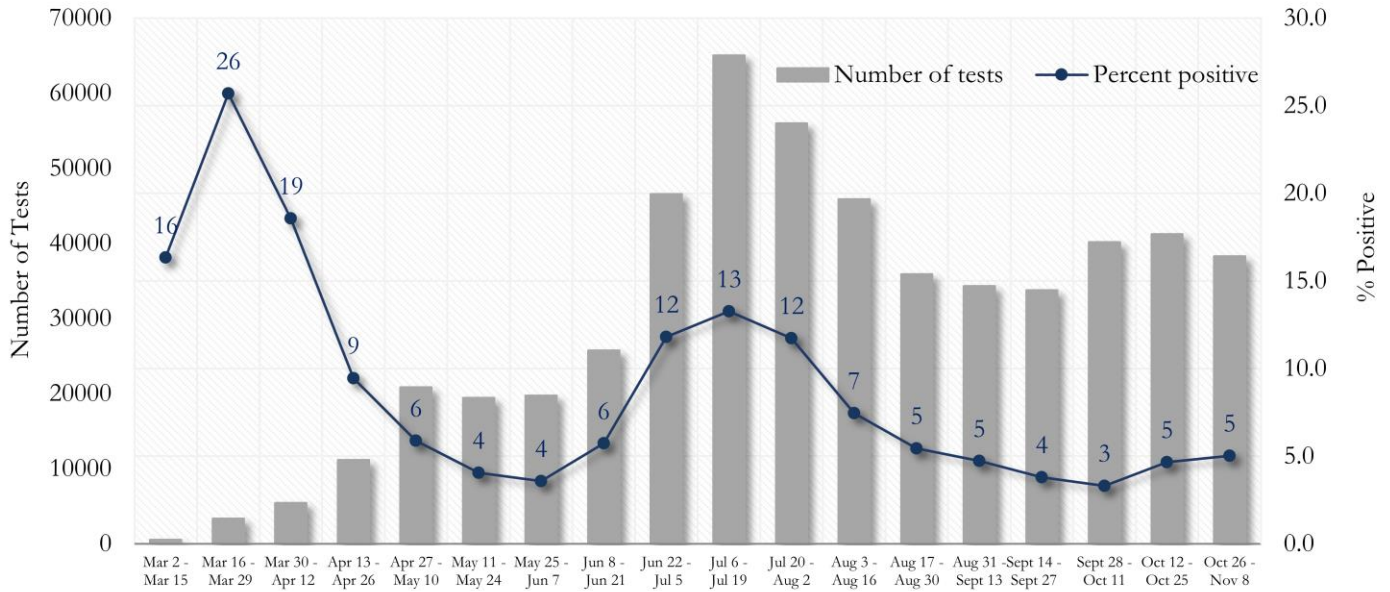
Fig. 2. Incident &amp; Cumulative Diagnoses Rates for COVID-19 by City



\*Rates shown are per 100,000 persons | **Note:** Mass testing in specific locations (e.g. long term care facilities) may cause sharp increases in the cumulative rate of COVID-19 diagnosis in those territories. All data shown are preliminary and are subject to change as testing results get updated.

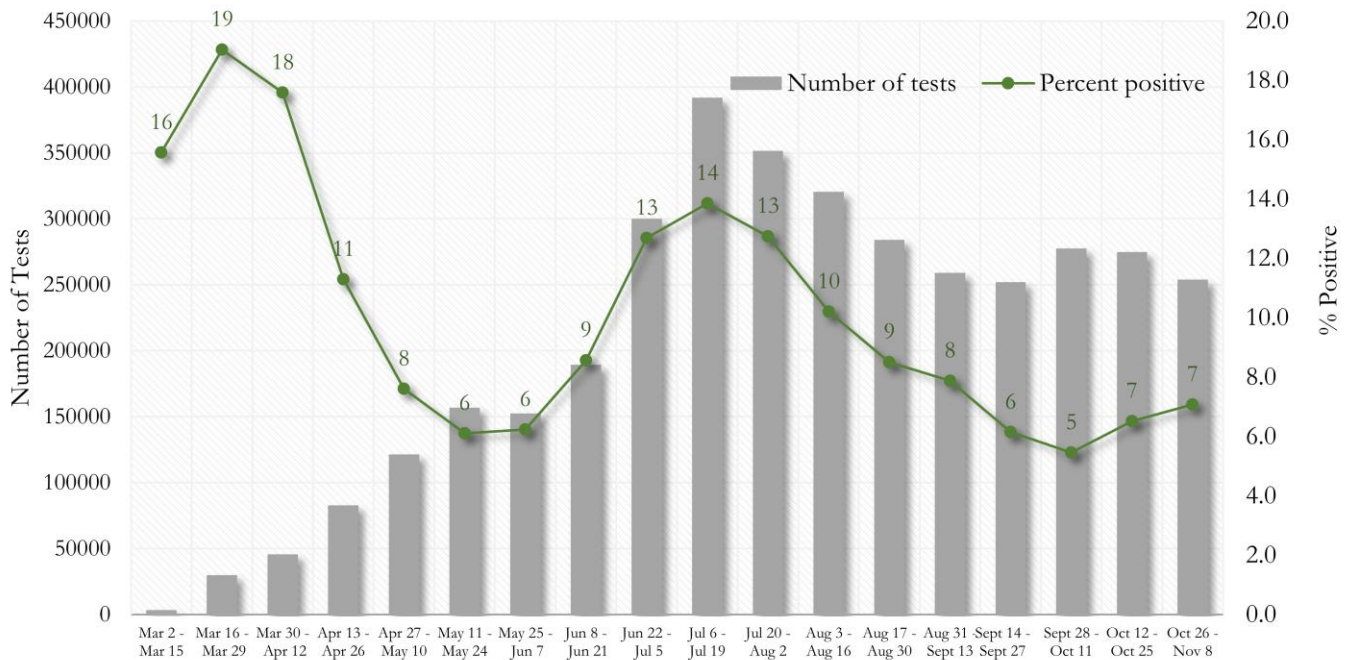
**COVID-19 TESTING AND POSITIVITY IN FULTON COUNTY AND GEORGIA**

**Fig. 3. Trends in Positive COVID-19 Tests in Fulton County by 14-day Periods**



\*Data on Polymerase Chain Reaction (PCR) tests only included. This rate is subject to change as more test results are reported. A recent backlog in reporting electronic lab results may affect the most recent rate.

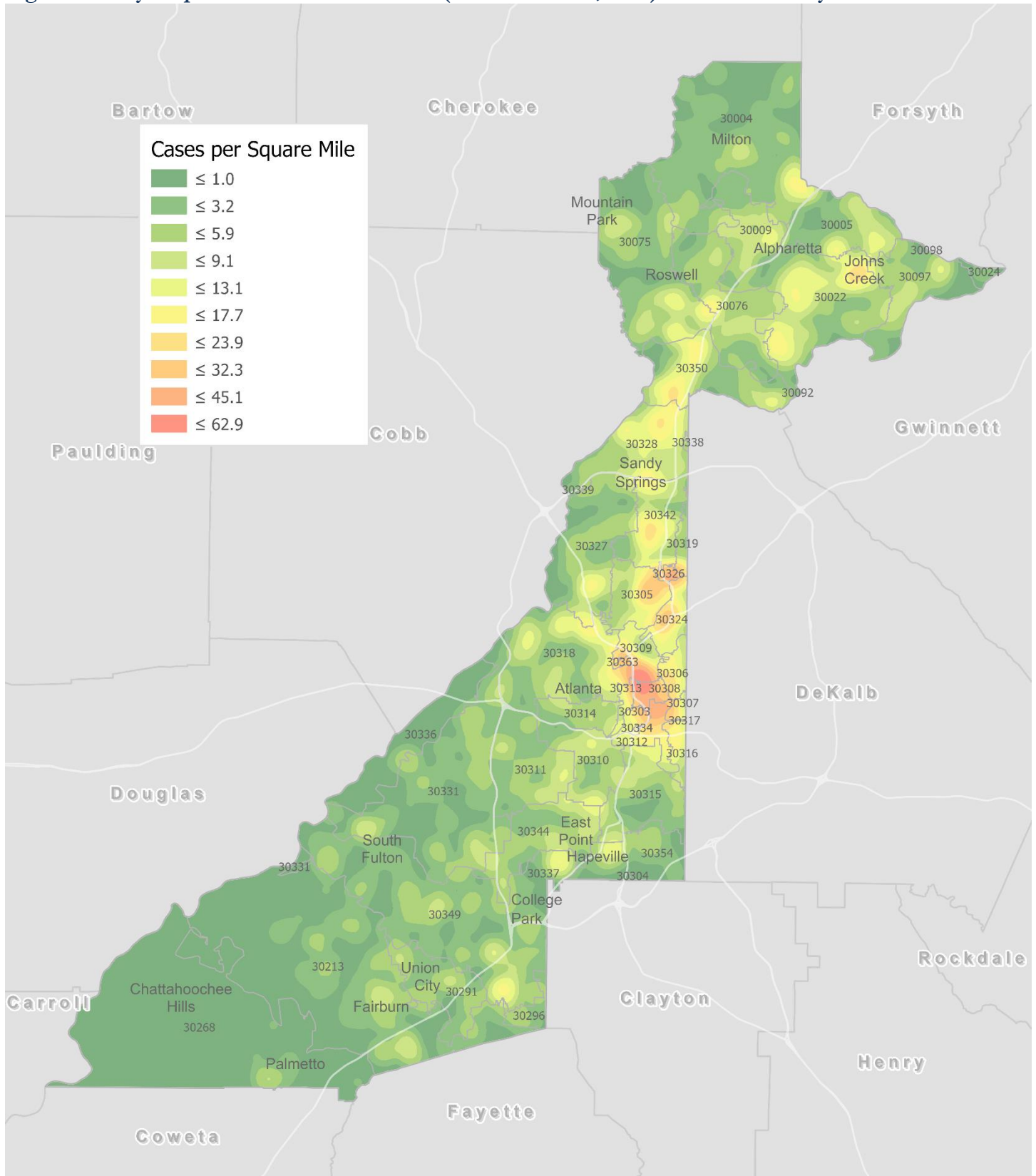
**Fig. 4. Trends in Positive COVID-19 Tests in Georgia by 14-day Periods**



\*Data on Polymerase Chain Reaction (PCR) tests only included. This rate is subject to change as more test results are reported. A recent backlog in reporting electronic lab results may affect the most recent rate.

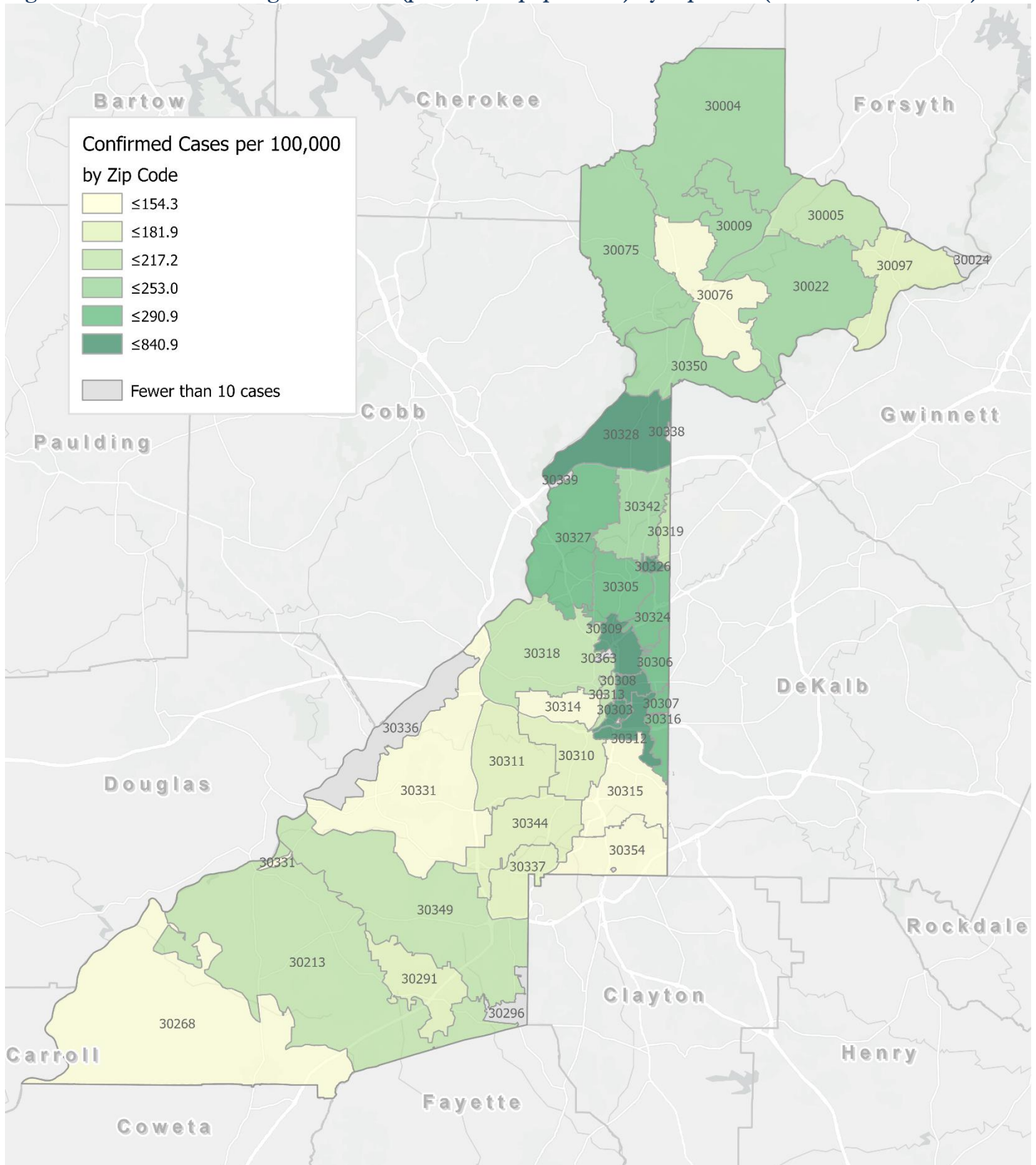


Fig. 5. Density Map – New COVID-19 Cases (Oct 31– Nov 13, 2020) in Fulton County



**New COVID-19 cases:** Cases diagnosed in most recent 14 days (based on reported dates of positive sample collection). To allow for lag in reporting results of positive cases from samples collected in the immediate past 7 days, data used for incident diagnoses analyses are moved back by one week. Map reflects new COVID-19 cases diagnosed between Oct 31<sup>st</sup> and Nov 13<sup>h</sup>, 2020 across Fulton County, excluding LTCF cases.

Fig. 6. New COVID-19 Diagnoses Rates (per 100,000 population) by Zip Code (Oct 31– Nov 13, 2020)



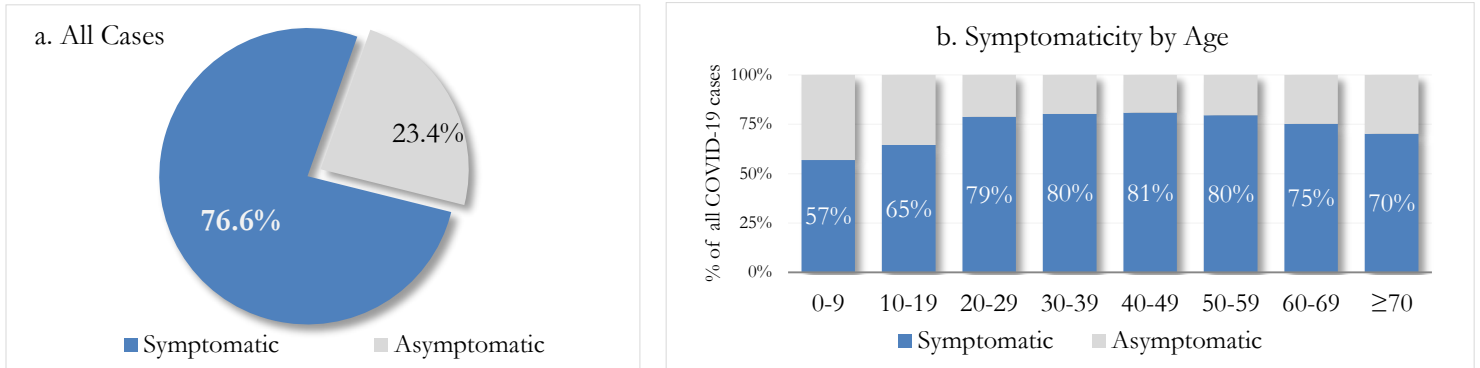
\*Rates shown are per 100,000 populations.

**New COVID-19 cases:** Cases diagnosed in most recent 14 days (based on reported dates of positive sample collection). To allow for lag in reporting results of positive cases from samples collected in the immediate past 7 days, data used for incident diagnoses analyses are moved back by one week. Data used excludes outbreak-related cases at long-term care facilities and map shown reflects only the new non-LTCF cases diagnosed between the dates shown in map title. See page 17 for zip code break down table.

## REPORTING SYMPTOMS AMONG PERSONS WITH COVID-19 IN FULTON

People with COVID-19 have reported a wide range of symptoms ranging from mild symptoms to severe illness. Symptoms may appear 2-14 days after exposure to the virus. Symptoms reported include: cough, shortness of breath/difficulty breathing, fever, chills, muscle pain, headache, sore throat, congestion, nausea or vomiting, diarrhea, or new loss of taste or smell – Centers for Disease Control and Prevention (CDC)  
<https://www.cdc.gov/coronavirus/2019-ncov/symptoms-testing/symptoms.html>

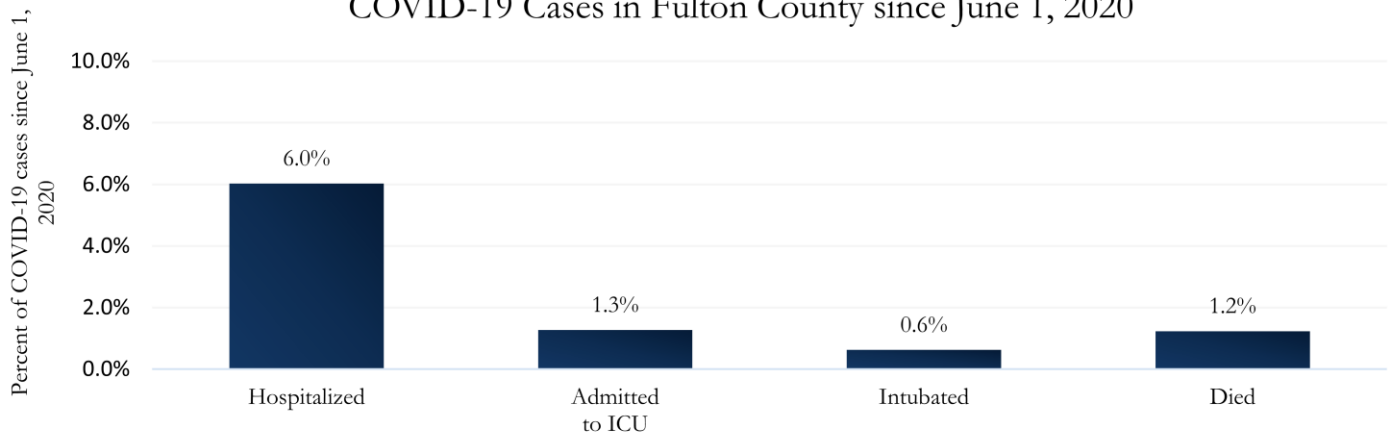
Fig. 7a & b. Total Proportion Reporting Symptoms in Fulton County



\*\*\*COVID-19 cases who have been case interviewed or had medical charts reviewed as of 11/19/20 only. n = 24,043\*\*\*

## COVID-19 HOSPITALIZATIONS, ICU ADMISSIONS AND DEATHS IN FULTON

Fig. 8. Hospitalizations, ICU Admissions, Intubations, and Deaths among COVID-19 Cases in Fulton County since June 1, 2020



## DEMOGRAPHIC DISTRIBUTIONS – COVID-19 CASES AND DEATHS

### A. Distribution of COVID-19 cases by gender, age, and race in Fulton County by Fulton Region

	North Fulton Cities <sup>1</sup> Count (%)	Atlanta Count (%)	South Fulton Cities <sup>2</sup> Count (%)	Unknown City Count (%)	All Fulton Count (%)
<b>Total COVID-19 cases</b>	10370	15556	7039	2184	35149
<b>Gender:</b> Female	5247 (50.6%)	7509 (48.3%)	3907 (55.5%)	1041 (47.7%)	17704 (50.4%)
Male	4809 (46.4%)	7449 (47.9%)	2922 (41.5%)	1047 (47.9%)	16227 (46.2%)
Unknown*	154 (1.5%)	354 (2.3%)	108 (1.5%)	68 (3.1%)	684 (1.9%)
<b>Age:</b> 0-9	351 (3.4%)	305 (2.0%)	229 (3.3%)	53 (2.4%)	938 (2.7%)
10-19	1472 (14.2%)	1148 (7.4%)	510 (7.2%)	148 (6.8%)	3278 (9.3%)
20-29	2252 (21.7%)	4707 (30.3%)	1344 (19.1%)	575 (26.3%)	8878 (25.3%)
30-39	1596 (15.4%)	3433 (22.1%)	1464 (20.8%)	467 (21.4%)	6960 (19.8%)
40-49	1644 (15.9%)	2029 (13.0%)	1283 (18.2%)	334 (15.3%)	5290 (15.1%)
50-59	1549 (14.9%)	1632 (10.5%)	975 (13.9%)	279 (12.8%)	4435 (12.6%)
60-69	810 (7.8%)	1066 (6.9%)	649 (9.2%)	169 (7.7%)	2694 (7.7%)
≥70	689 (6.6%)	1185 (7.6%)	579 (8.2%)	150 (6.9%)	2603 (7.4%)
Unknown*	<10	51 (0.3%)	<10	<10	73 (0.2%)
<b>Race:</b> Asian, NH	428 (4.1%)	292 (1.9%)	32 (0.5%)	42 (1.9%)	794 (2.3%)
Black, NH	1194 (11.5%)	6817 (43.8%)	5052 (71.8%)	763 (34.9%)	13826 (39.3%)
White, NH	4626 (44.6%)	4245 (27.3%)	349 (5.0%)	544 (24.9%)	9764 (27.8%)
Hispanic	1905 (18.4%)	1007 (6.5%)	591 (8.4%)	207 (9.5%)	3710 (10.6%)
Other, NH	366 (3.5%)	559 (3.6%)	169 (2.4%)	80 (3.7%)	1174 (3.3%)
Unknown*	1851 (17.8%)	2636 (16.9%)	846 (12.0%)	548 (25.1%)	5881 (16.7%)

\*Unknown includes cases not yet interviewed.

### B. Distribution of COVID-19 deaths by gender, age, and race in Fulton County by Fulton Region

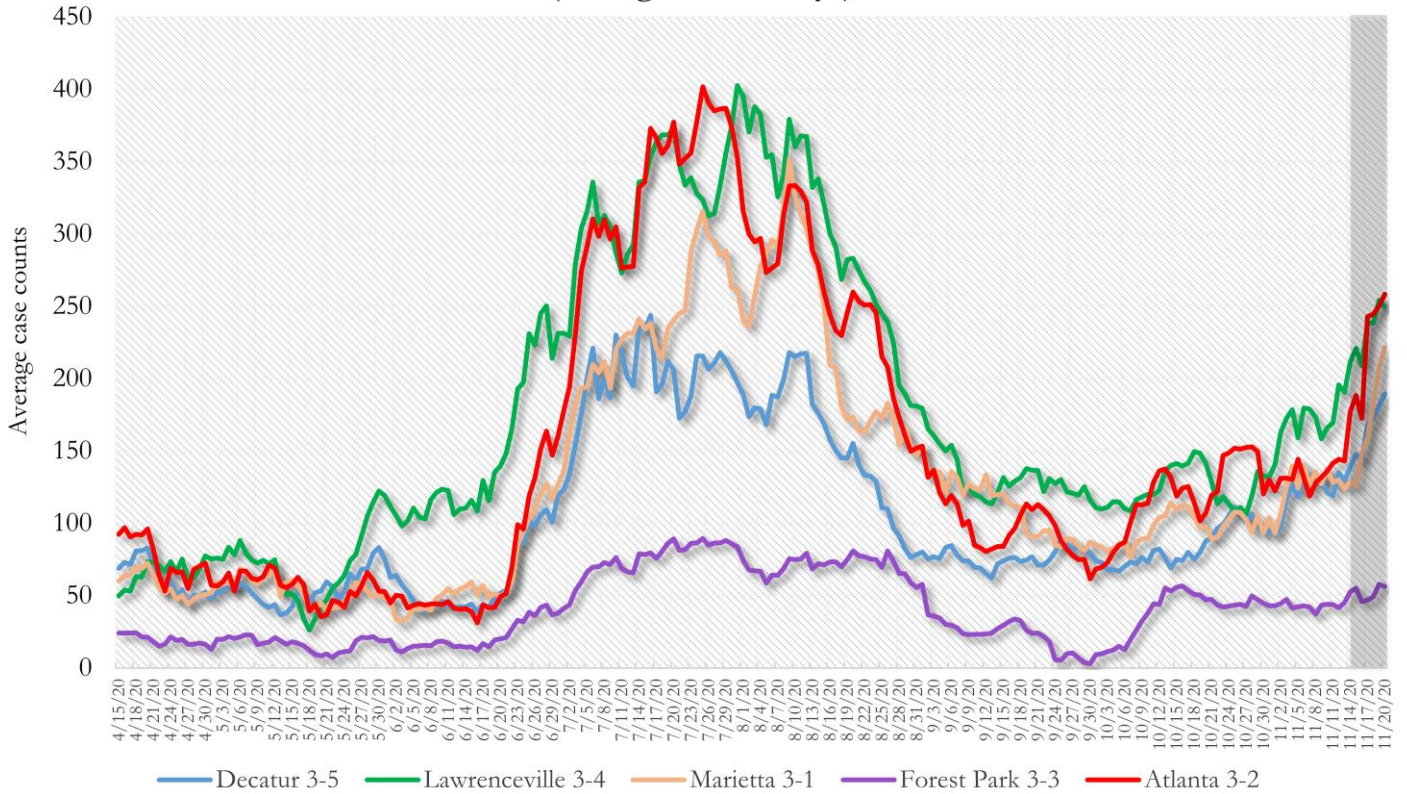
	North Fulton Cities <sup>1</sup> Count (%)	Atlanta Count (%)	South Fulton Cities <sup>2</sup> Count (%)	Unknown City Count (%)	All Fulton Count (%)
<b>Total COVID-19 deaths</b>	144	316	170	23	653
<b>Gender:</b> Female	67 (46.5%)	143 (45.3%)	86 (50.6%)	10 (43.5%)	306 (46.9%)
Male	77 (53.5%)	173 (54.7%)	84 (49.4%)	13 (56.5%)	347 (53.1%)
Unknown	0	0	0	0	0
<b>Age:</b> ≤ 29	<10	<10	<10	0	<10
30-39	<10	<10	<10	<10	12 (1.8%)
40-49	<10	<10	10 (5.9%)	<10	26 (4.0%)
50-59	<10	27 (8.5%)	19 (11.2%)	<10	57 (8.7%)
60-69	17 (11.8%)	61 (19.3%)	38 (22.4%)	<10	117 (17.9%)
≥70	113 (78.5%)	209 (66.1%)	99 (58.2%)	15 (65.2%)	436 (66.8%)
Unknown	0	0	0	0	0
<b>Race:</b> Asian, NH	<10	<10	<10	0	11 (1.7%)
Black, NH	26 (18.1%)	263 (83.2%)	139 (81.8%)	10 (43.5%)	438 (67.1%)
White, NH	99 (68.8%)	42 (13.3%)	21 (12.4%)	11 (47.8%)	173 (26.5%)
Hispanic	15 (10.4%)	<10	<10	<10	29 (4.4%)
Other, NH	0	<10	<10	0	<10
Unknown	0	0	0	0	0

<sup>1</sup>Includes all Fulton County cities north of Atlanta (Alpharetta, Johns Creek, Milton, Mountain Park, Roswell, Sandy Springs) <sup>2</sup>Includes all cities south of Atlanta (College Park, Chattahoochee Hills, East Point, Fairburn, Hapeville, Palmetto, South Fulton, Union City). **Note:** All data reported are preliminary and subject to change. This table includes data on all confirmed COVID-19 deaths and is subject to change as GA DPH completes cause of death confirmation processes.



**COVID-19 CASE TRENDS IN FULTON AND SURROUNDING DISTRICTS**

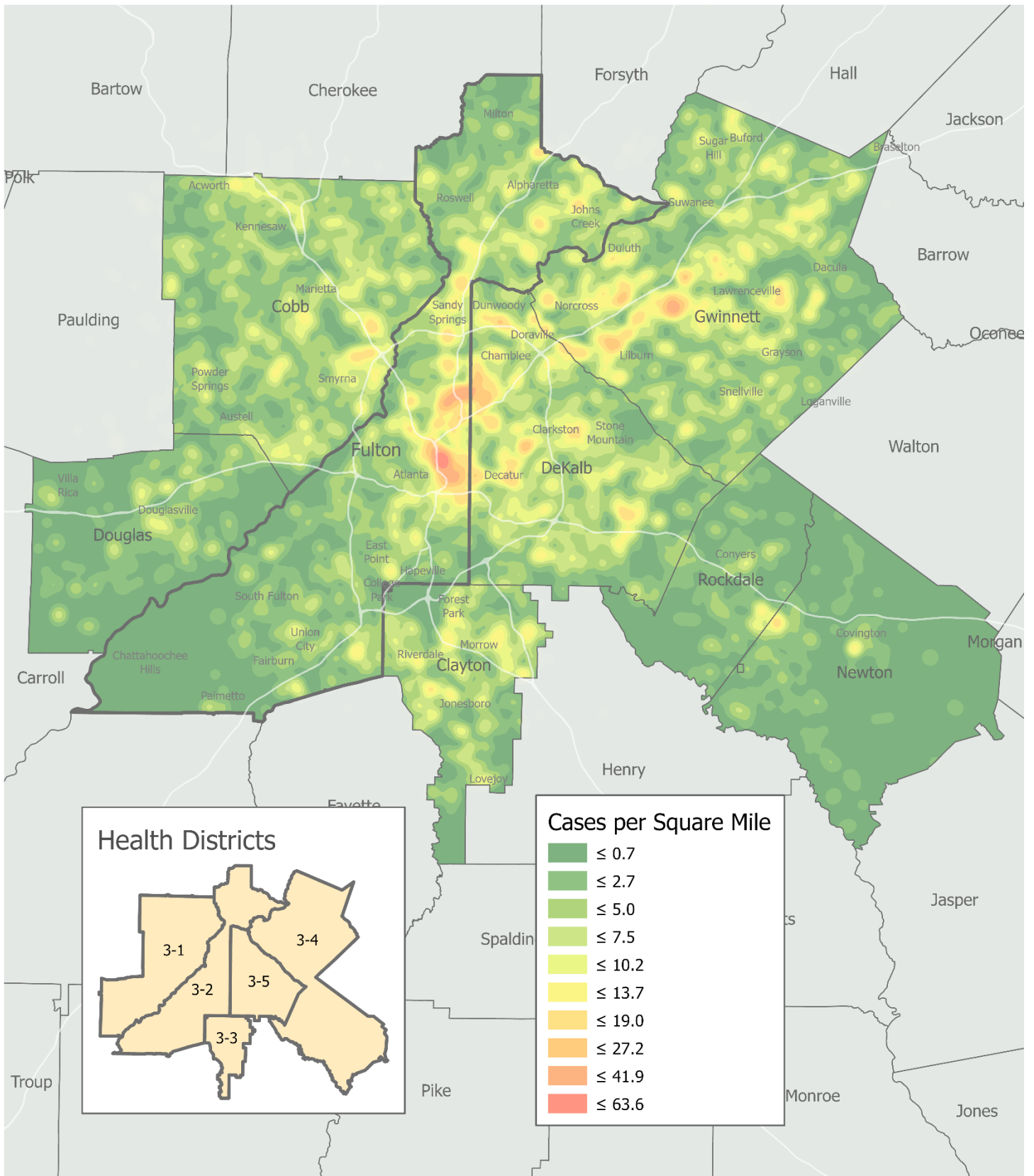
**Fig. 9. Daily Case Counts for Atlanta Metro Districts  
(Averaged over 7 days)**



\*Graph shows the average number of cases calculated from the daily cumulative case counts in the metro Atlanta districts. Increases in daily cumulative case counts may include cases diagnosed earlier during the pandemic but were only recently reported to the state as cases diagnosed belonging to these districts.

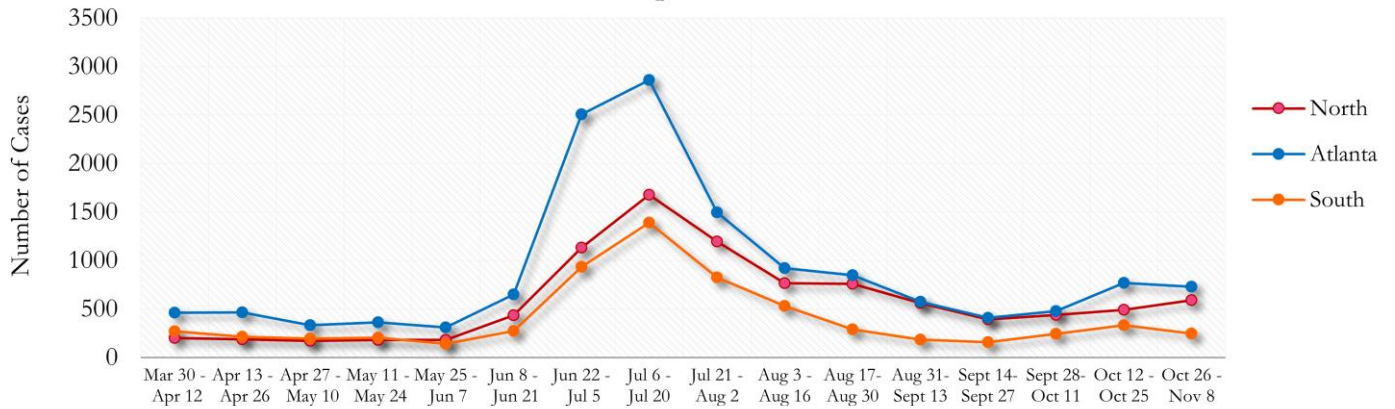


Fig. 10. COVID-19 Cases in Fulton County and Surrounding Districts (Oct 31 – Nov 10, 2020)



## TRENDS IN COVID-19 CASES AMONG DEMOGRAPHIC GROUPS (14 DAY PERIODS)

**Fig. 11. Trends in Geographic distribution of COVID-19 Cases in Fulton County by 14-day periods**

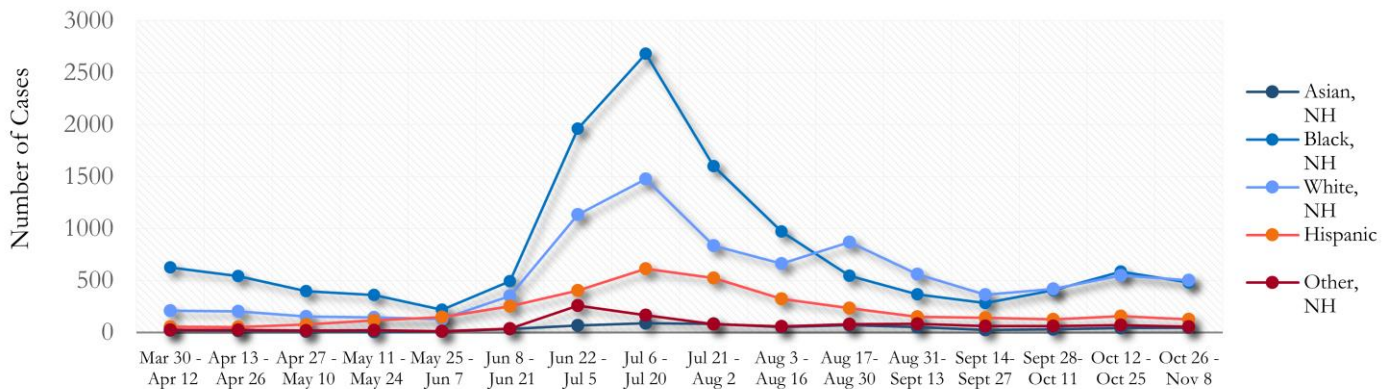


In the past two weeks, the city of Atlanta accounted for the majority of new cases.

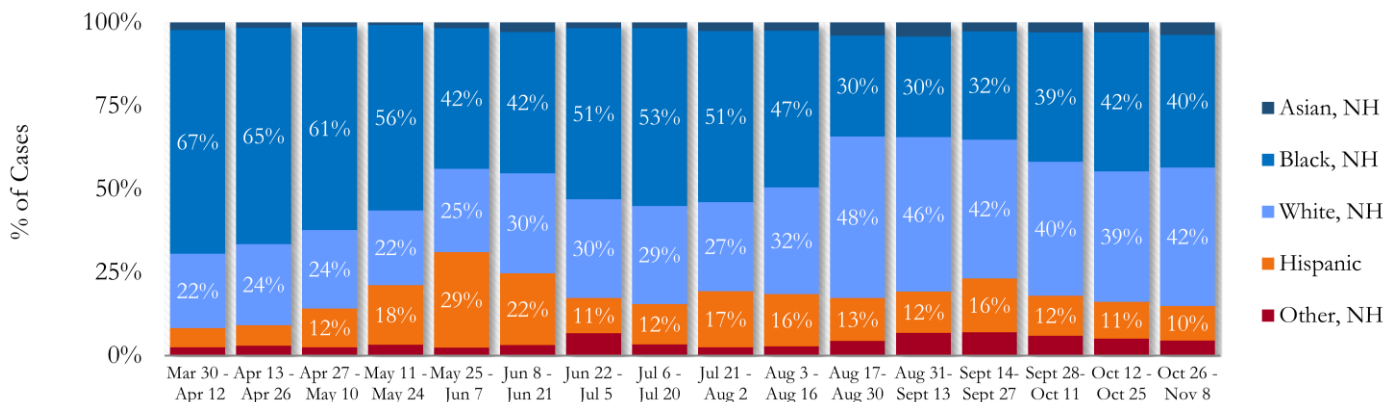
\*North - Includes all Fulton cities north of Atlanta (Alpharetta, Johns Creek, Milton, Mountain Park, Roswell, Sandy Springs)

\*South - Includes all Fulton cities south of Atlanta (College Park, Chattahoochee Hills, East Point, Fairburn, Hapeville, Palmetto, South Fulton, and Union City)

**Fig. 12. Trends in Racial Distribution of COVID-19 Cases in Fulton County by 14-day periods**

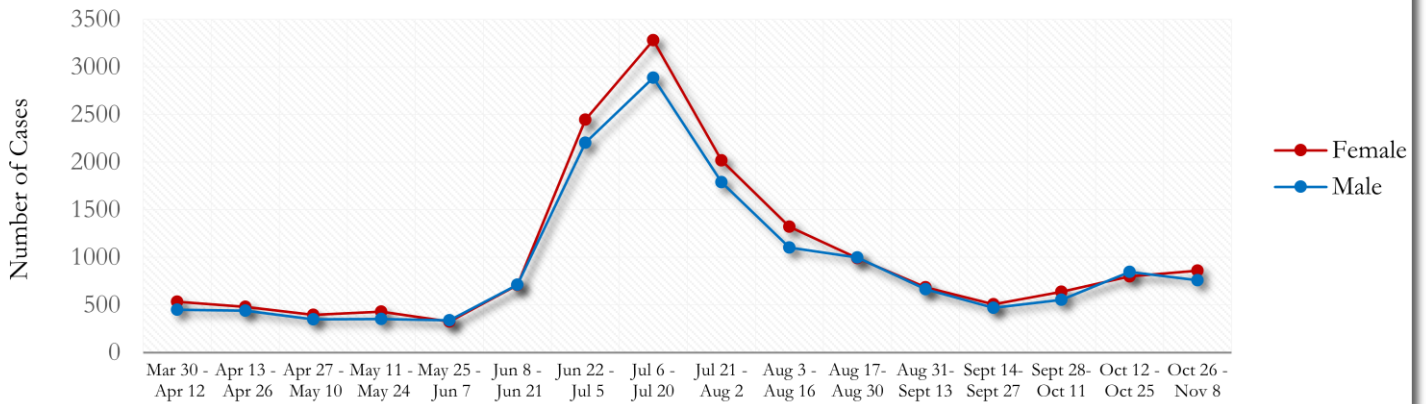


**Fig. 13. Racial Distribution of COVID-19 Cases in Fulton County by 14-day periods**

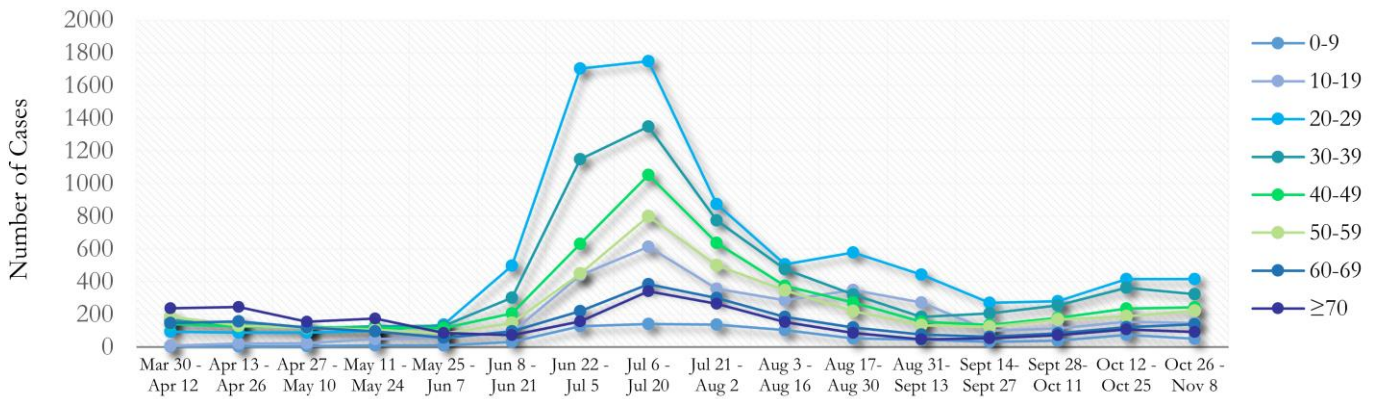


About 18% of COVID cases are missing data on patient race and ethnicity. The majority of new cases in the past two weeks were White, NH (42%) and Black, NH (40%).

**Fig. 14. Trends in Gender Distribution of COVID-19 Cases in Fulton County by 14-day periods**

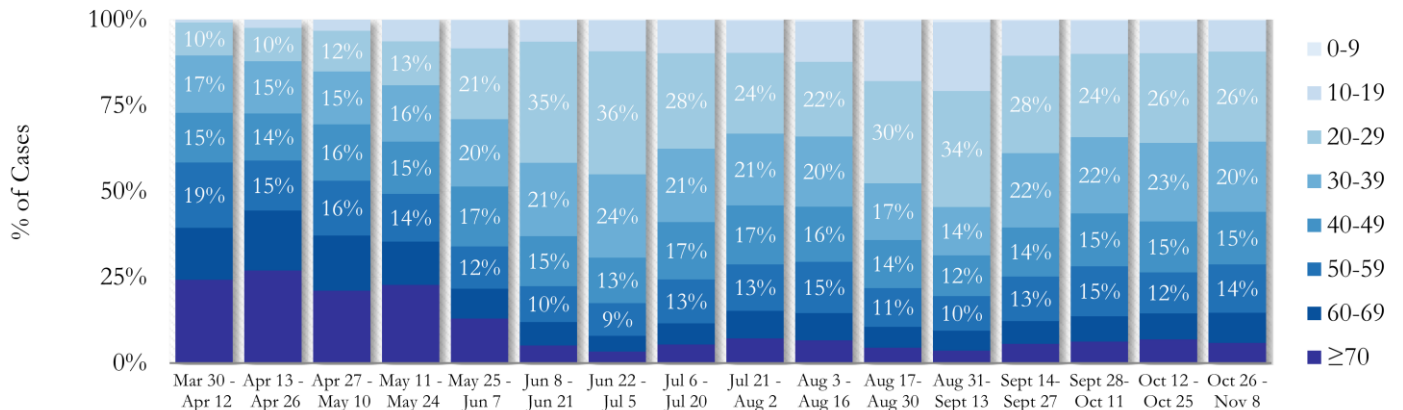


**Fig. 15. Trends in Age Distribution of COVID-19 Cases in Fulton County by 14-day periods**



Earlier (March-May 2020) large proportions of reported cases were among persons aged 60 and older. In the most recent two weeks, 20-29 year olds accounted for the highest number of new cases among all age groups, followed by 30-39 year olds.

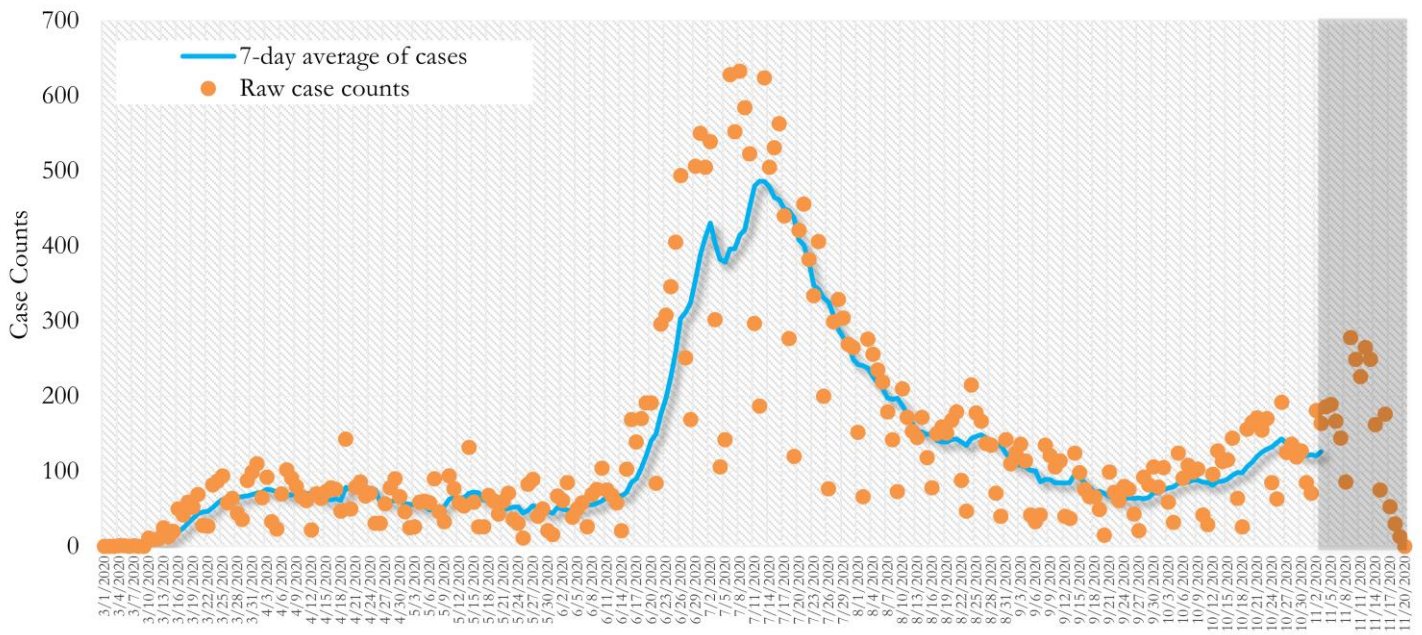
**Fig. 16. Age Distribution of COVID-19 Cases in Fulton County by 14-day periods**





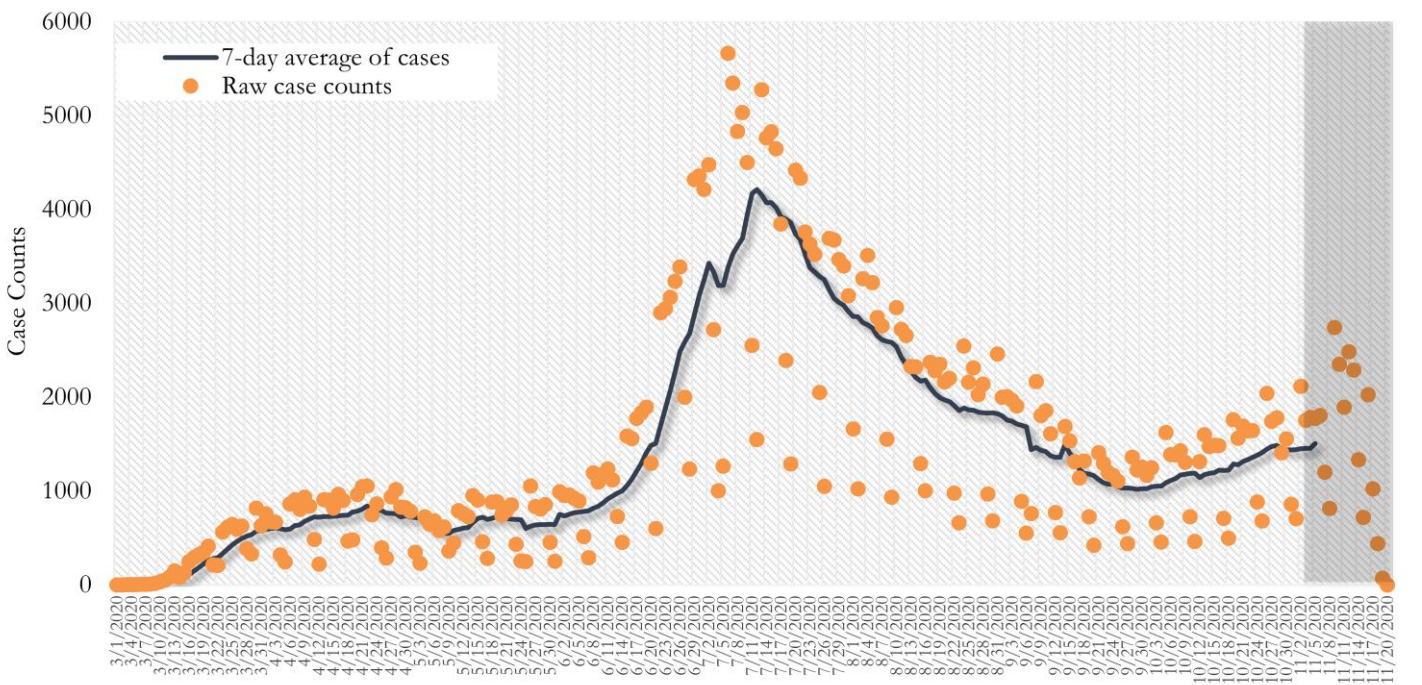
TRENDS IN COVID-19 CASES, HOSPITALIZATIONS AND DEATHS (7-DAY MOVING AVE.)

Fig. 17. New COVID-19 Cases in Fulton County Daily (Averaged over 7 days)



\*Date of collection of first positive sample used (report creation date used where sample collection date is missing). Graph above reflects the trend in COVID-19 diagnosis. Due to the high volume of testing in recent weeks, there have been delays in reporting lab results. Thus, the trend is subject to change as more lab results get added to the state surveillance database.

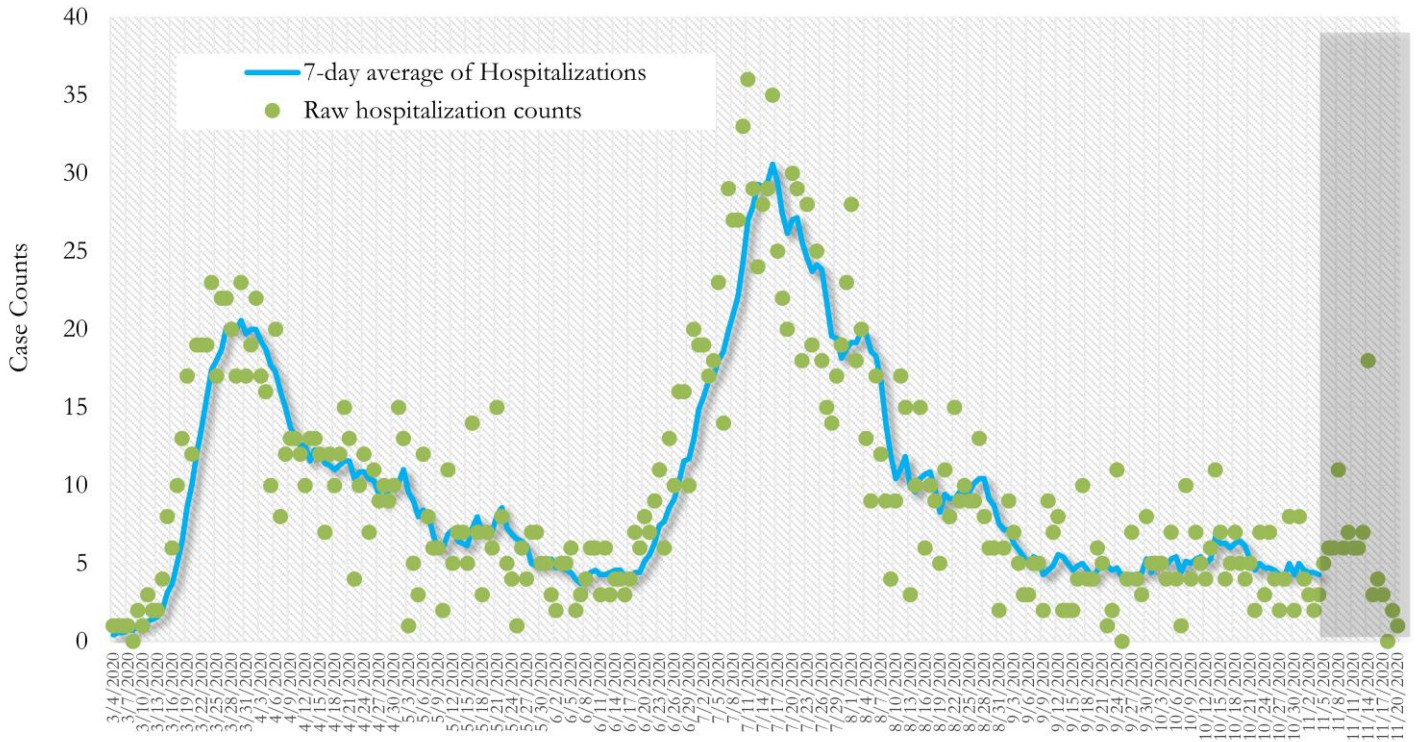
Fig. 18. New COVID-19 Cases in Georgia State Daily (Averaged over 7 days)



\*Date of collection of first positive sample used (report creation date used where sample collection date is missing). Graph above reflects the trend in COVID-19 diagnosis. Due to the high volume of testing in recent weeks, there have been delays in reporting lab results. Thus, the trend is subject to change as more lab results get added to the state surveillance database.

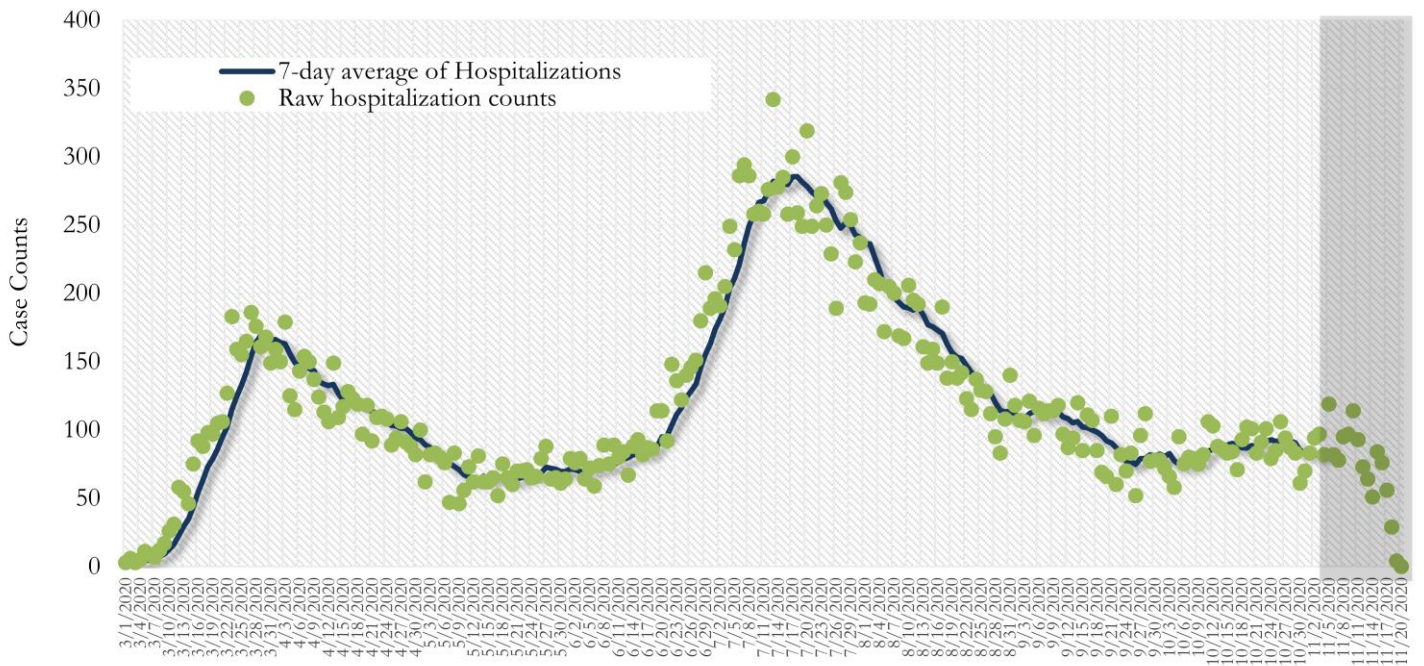


**Fig. 19. COVID-19 Hospitalizations in Fulton County Daily (Averaged over 7 days)**



\*Reported date of hospital admission used. Graph above reflects the trend in COVID-19 hospitalizations. Due to the high volume of new cases being added daily, there have been delays in reporting hospitalization data. Thus, the trend is likely to change as more hospitalization data is reported in the state surveillance database.

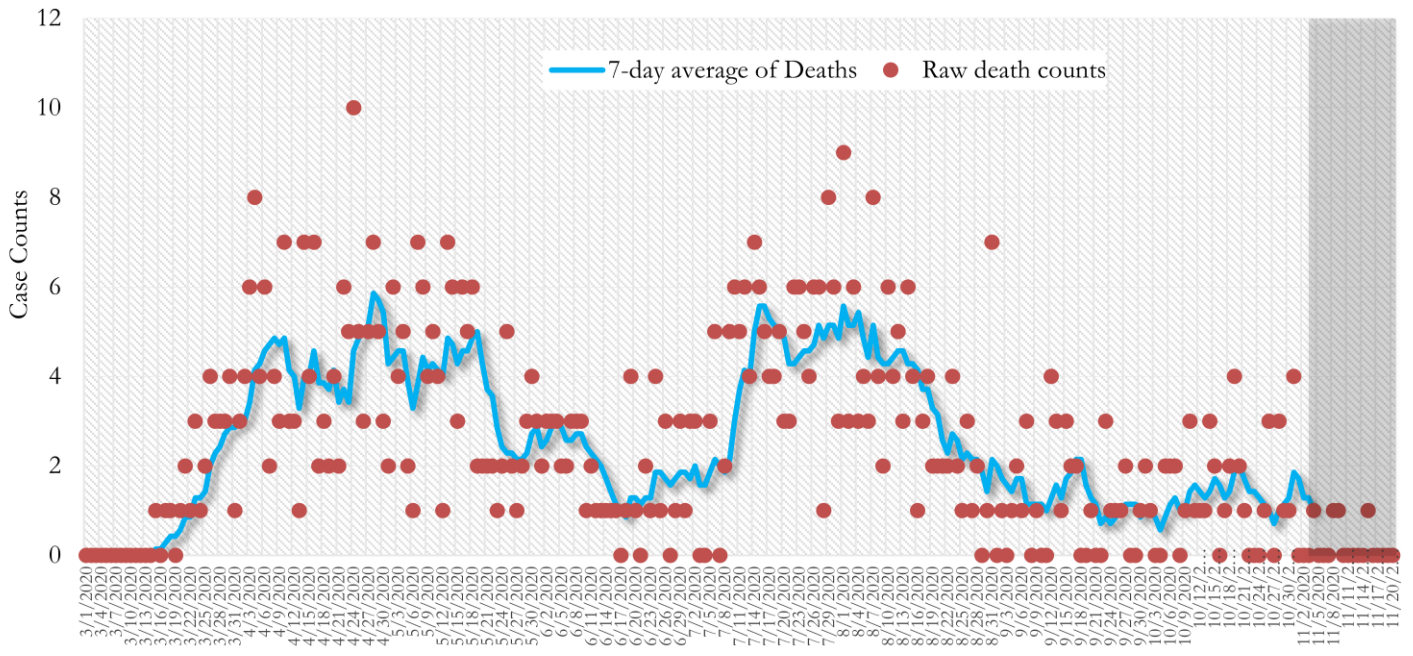
**Fig. 20. COVID-19 Hospitalizations in Georgia State Daily (Averaged over 7 days)**



\*Reported date of hospital admission used. Graph above reflects the trend in COVID-19 hospitalizations. Due to the high volume of new cases being added daily, there have been delays in reporting hospitalization data. Thus, the trend is likely to change as more hospitalization data is reported in the state surveillance database.

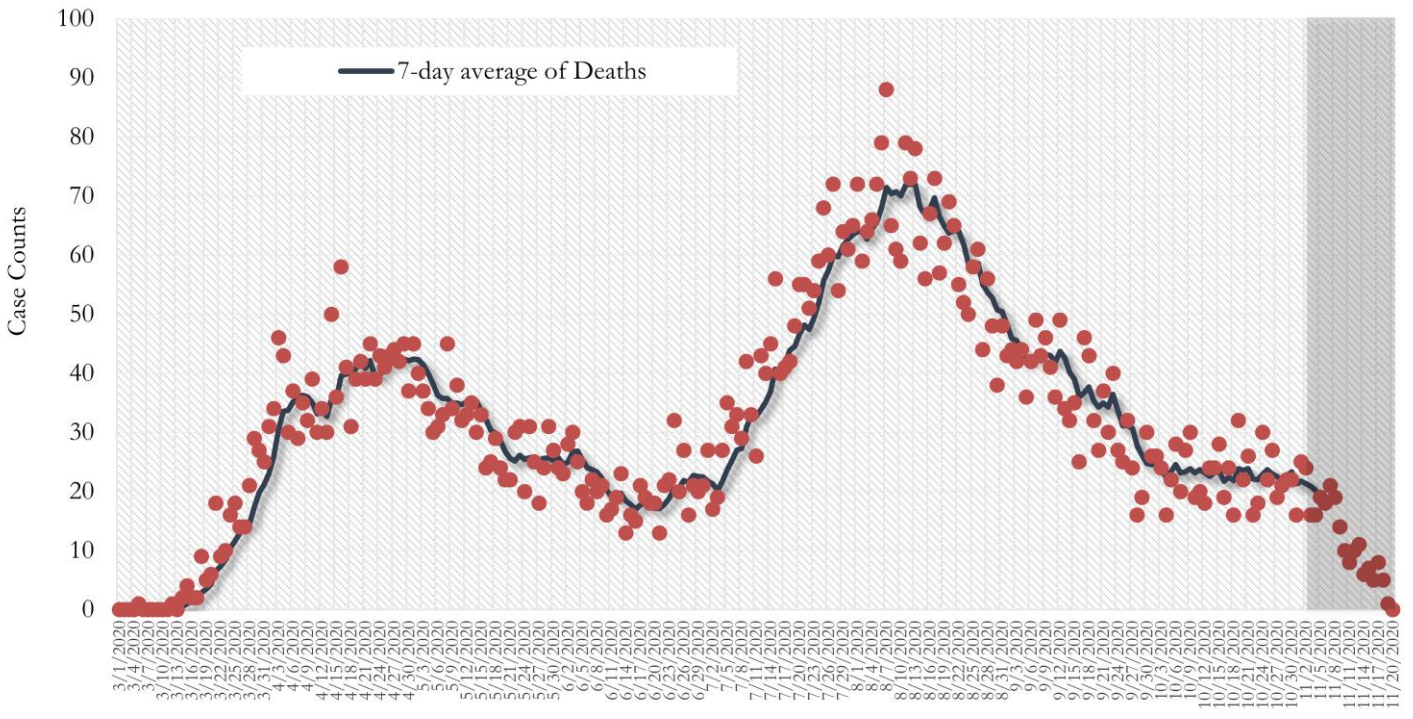


**Fig. 21. COVID-19 Deaths in Fulton County Daily (Averaged over 7 days)**



\* Reported date of death used. Graph above reflects the trend in deaths attributed to COVID-19. The trend is likely to change as more data on deaths among persons with COVID-19 is reported in the state surveillance database.

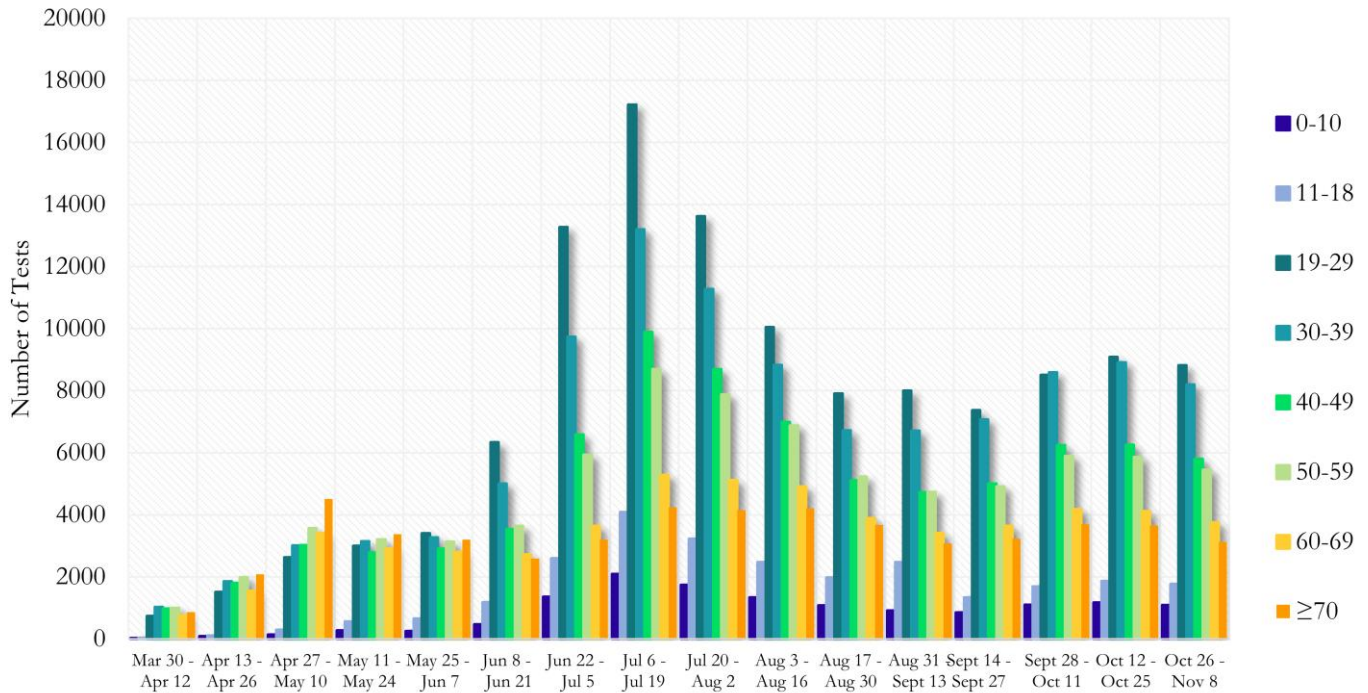
**Fig. 22. COVID-19 Deaths in Georgia State Daily (Averaged over 7 days)**



\* Reported date of death used. Graph above reflects the trend in deaths attributed to COVID-19. The trend is likely to change as more data on deaths among persons with COVID-19 is reported in the state surveillance database.

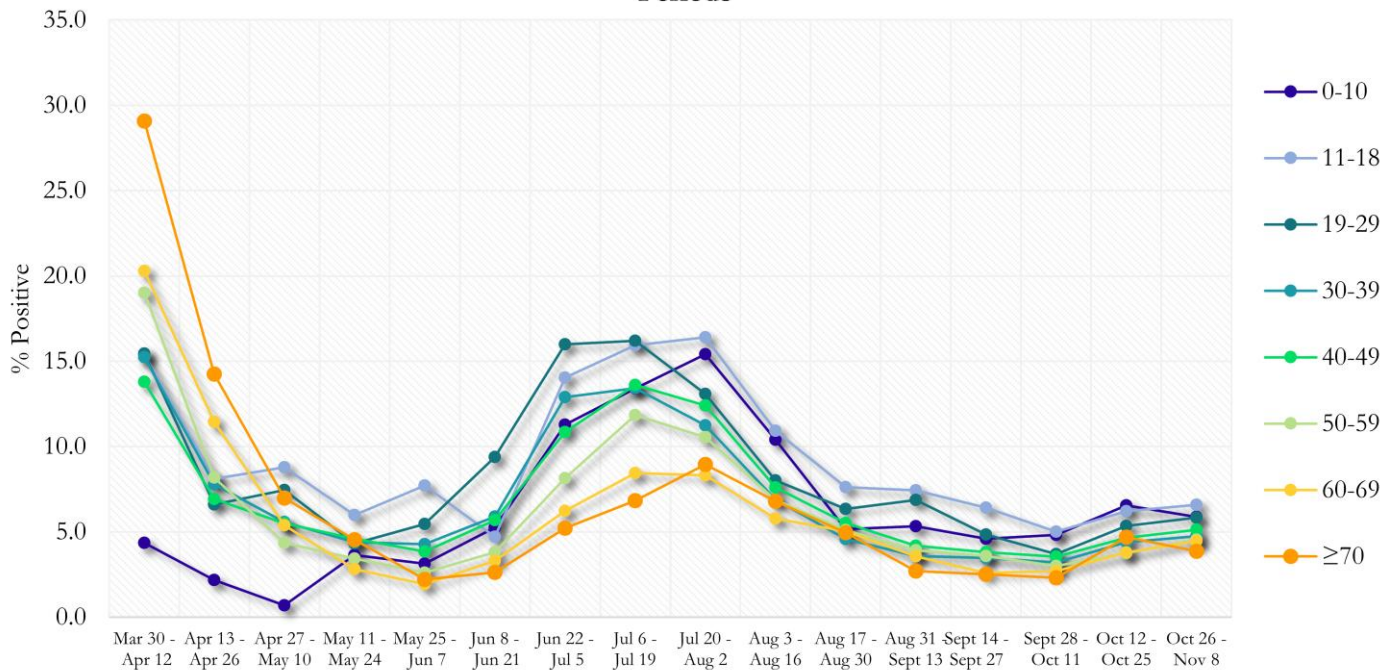
**COVID-19 TESTING AND POSITIVITY IN FULTON COUNTY BY AGE AND RACE**

**Fig. 23. COVID-19 Tests by Age in Fulton County by 14-day Periods**



\*Data on Polymerase Chain Reaction (PCR) tests only included.

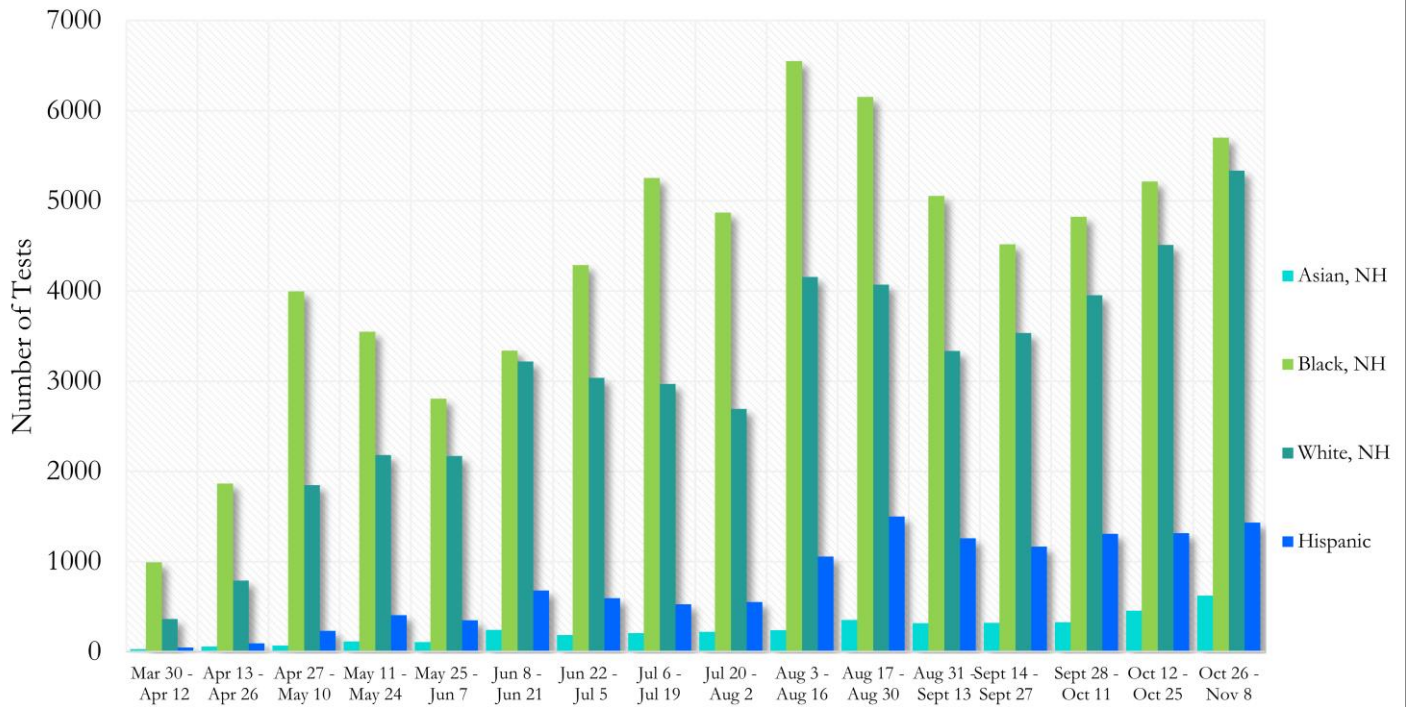
**Fig. 24. Percent Positive COVID-19 Tests by Age Group in Fulton County by 14-day Periods**



\*Data on Polymerase Chain Reaction (PCR) tests only included.

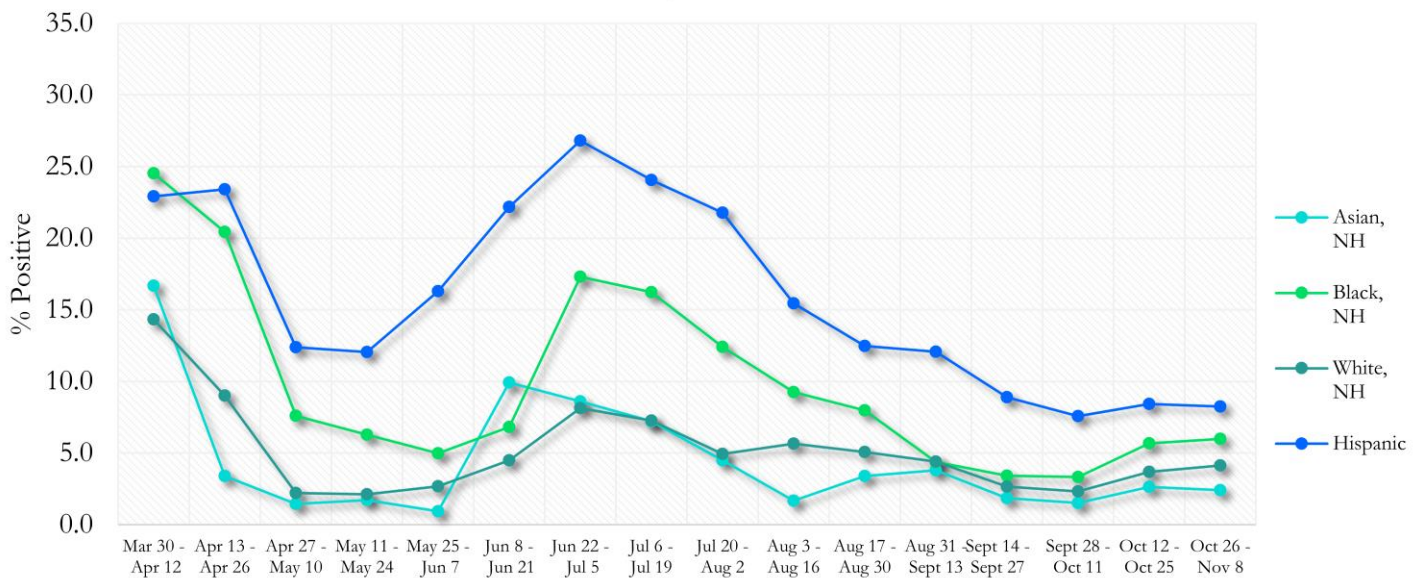


**Fig. 25. COVID-19 Tests by Race and Ethnicity in Fulton County by 14-day Periods**



\*Data on Polymerase Chain Reaction (PCR) tests only included.

**Fig. 26. Percent Positive COVID-19 Tests by Race and Ethnicity in Fulton County by 14-day Periods**



\*Data on Polymerase Chain Reaction (PCR) tests only included.



## COVID-19 CASE COUNTS BY ZIP CODE

	Prior (11/17/20)	Current Total (11/20/20)		New Cases (Period: 10/17/20 – 11/13/20) <sup>1</sup>		
	Count	Count	%	Recent 14 d. (Oct 31– Nov 13)	Prior 14 d. (Oct 17– Oct 30)	% change <sup>2</sup>
<b>All Fulton</b>	34615	35149	100%	2718	1802	↑ 50.8%
30004	1207	1230	3.50%	137	63	↑ 117.5%
30005	679	686	1.95%	72	43	↑ 67.4%
30009	583	597	1.70%	52	33	↑ 57.6%
30022	1578	1613	1.01%	181	89	↑ 103.4%
30023	<10	<10	<0.1%	<10	0	-
30024	19	21	<0.1%	<10	<10	-
30075	1373	1390	3.95%	123	70	↑ 75.7%
30076	1341	1359	3.87%	85	60	↑ 41.7%
30080	<10	<10	<0.1%	<10	0	-
30097	368	378	1.08%	54	33	↑ 63.6%
30098	-	-	-	0	0	-
30135	<10	<10	<0.1%	0	0	-
30138	<10	<10	<0.1%	0	0	-
30139	-	-	-	0	0	-
30213	1320	1346	3.83%	92	64	↑ 43.8%
30268	221	223	0.63%	13	<10	↑ 116.7%
30291	917	937	2.67%	48	42	↑ 14.3%
30296	78	81	0.23%	11	11	-
30301	12	12	<0.1%	0	<10	↓ 100.0%
30303	440	441	1.25%	24	20	↑ 20.0%
30305	1028	1045	2.97%	97	81	↑ 19.8%
30306	443	458	1.30%	48	26	↑ 84.6%
30307	235	240	0.68%	21	<10	↑ 133.3%
30308	761	766	2.18%	67	66	↑ 1.5%
30309	1084	1104	3.14%	97	83	↑ 16.9%
30310	890	901	2.56%	52	38	↑ 36.8%
30311	935	953	2.71%	55	43	↑ 27.9%
30312	992	1012	2.88%	87	40	↑ 117.5%
30313	351	355	1.01%	24	<10	↑ 242.9%
30314	640	650	1.85%	24	20	↑ 20.0%
30315	1065	1086	3.09%	81	50	↑ 62.0%
30316	458	462	1.31%	33	25	↑ 32.0%
30318	2111	2144	6.10%	143	98	↑ 45.9%
30319	192	192	0.55%	22	<10	↑ 175.0%
30321	12	12	<0.1%	<10	0	-
30324	1112	1135	3.23%	83	58	↑ 43.1%
30326	342	348	0.99%	44	26	↑ 69.2%
30327	781	798	2.27%	92	64	↑ 43.8%
30328	1118	1136	3.23%	130	82	↑ 58.5%
30331	2023	2038	5.80%	88	71	↑ 23.9%
30334	13	13	<0.1%	0	0	-
30336	101	103	0.29%	<10	<10	-
30337	415	420	1.19%	23	21	↑ 9.5%
30338	102	97	0.28%	<10	<10	-
30339	268	266	0.76%	10	<10	↑ 66.7%
30340	32	32	<0.1%	<10	0	-
30341	32	32	<0.1%	0	0	-
30342	1464	1477	4.20%	94	82	↑ 14.6%
30344	1078	1093	3.11%	63	39	↑ 61.5%
30345	24	24	<0.1%	0	0	-

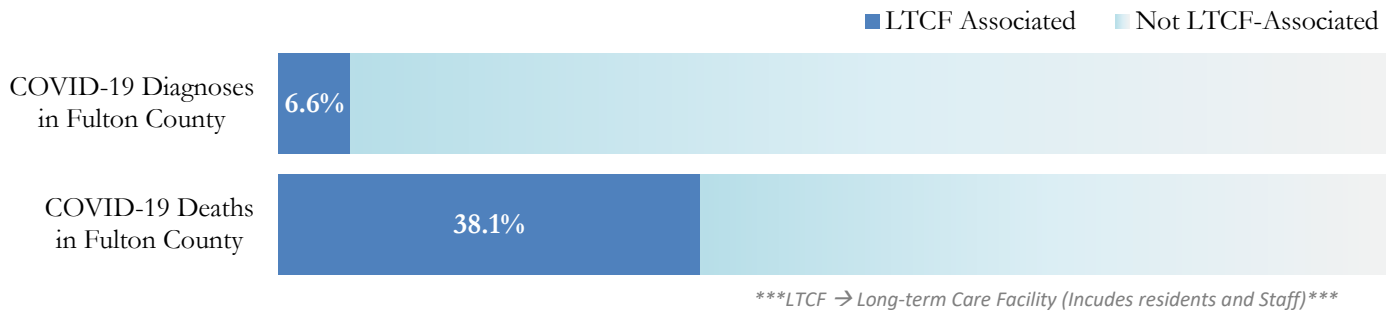
30349	2165	2190	6.23%	136	106	↑ 28.3%
30350	836	847	2.41%	101	35	↑ 188.6%
30354	517	523	1.49%	29	31	↓ 6.5%
30358	<10	<10	<0.1%	0	0	-
30363	89	90	0.26%	<10	<10	-
30374	31	32	<0.1%	<10	0	-
30606	<10	<10	<0.1%	0	0	-
31131	<10	<10	<0.1%	<10	0	-
31150	<10	<10	<0.1%	0	0	-
Unknown	713	734	2.09%	35	35	-

<sup>1</sup>**New cases:** Cases diagnosed in most recent 28 days (based on reported dates of positive sample collection). To allow for lag in reporting results of new diagnoses from samples collected in the most recent week, data used for incident diagnoses analyses were moved back by one week. <sup>2</sup>**Percent change:** These reflect the percentage increase or decrease of new diagnoses between the 14 days preceding the past 7 days and the 14 days preceding that. Changes in ZIP codes with less than 10 cases in both 2 week intervals are not reported\*\*Data cleaning (either during case interviews or address geo-coding) may lead to reassignment of few cases from one territory to another based on their corrected addresses. These may appear as “decreases” when compared to the previous day’s count. These do not reflect errors in the data collection or analysis process but only reflect the minor day-to-day fluctuations in case counts that arise in an evolving public health database like COVID’s. **Note:** Sharp increases in territorial COVID case counts often reflect new cases diagnosed at long term care facilities located in those territories during facility-wide /mass screening events **All data reported are preliminary and subject to change.**

## COVID-19 IN LONG-TERM CARE FACILITIES IN FULTON COUNTY

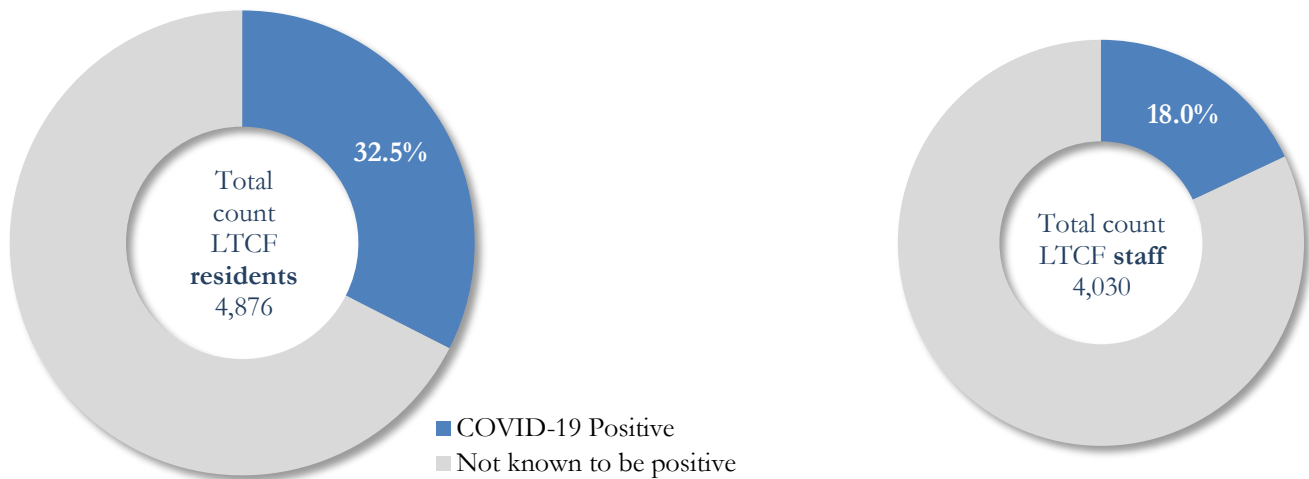
Older persons (aged 65 years and older) and persons who live in nursing homes or other long-term care facilities seem to be at higher risk for developing more serious complications from COVID-19. Extra precautions are recommended for individuals within this risk groups – Centers for Disease Control and Prevention (CDC 2020) <https://www.cdc.gov/coronavirus/2019-ncov/need-extra-precautions/people-at-higher-risk.html>

Fig. 27. COVID-19 Diagnoses and Deaths in Fulton County Associated with Long-Term Care Facilities



## COVID-19 POSITIVITY:

Fig. 28. COVID-19 Positivity at 64 reporting Long-Term Care Facilities (LTCF) in Fulton County



COVID-19 Cases, Hospitalizations, and Deaths among 64 reporting Long-Term Care Facilities in Fulton County

	LTCF Residents (n=4,876)			LTCF Staff (n=4,030)		
	Cases	Hospitalizations	Deaths	Cases	Hospitalizations	Deaths
Average (count per fac.) <sup>1</sup>	25	5	4	11	1	<0.1
Median (count per fac.) <sup>1</sup>	10	2	1	9	0	0
Lowest counts	0	0	0	0	0	0
Highest counts	139	48	30	67	8	2
Total Count	1584 (32.5%) <sup>a</sup>	318 (20.1%) <sup>b</sup>	244 (15.4%) <sup>b</sup>	726 (18.0%) <sup>a</sup>	32 (4.4%) <sup>b</sup>	5 (<1.0%) <sup>b</sup>

<sup>a</sup> Percentage shown reflects proportion of total residents/staff tested who were positive (i.e. COVID-19 Positivity). | <sup>b</sup> Percentages shown are proportions of persons residents/staff diagnosed with COVID-19 who were hospitalized or died after diagnoses.