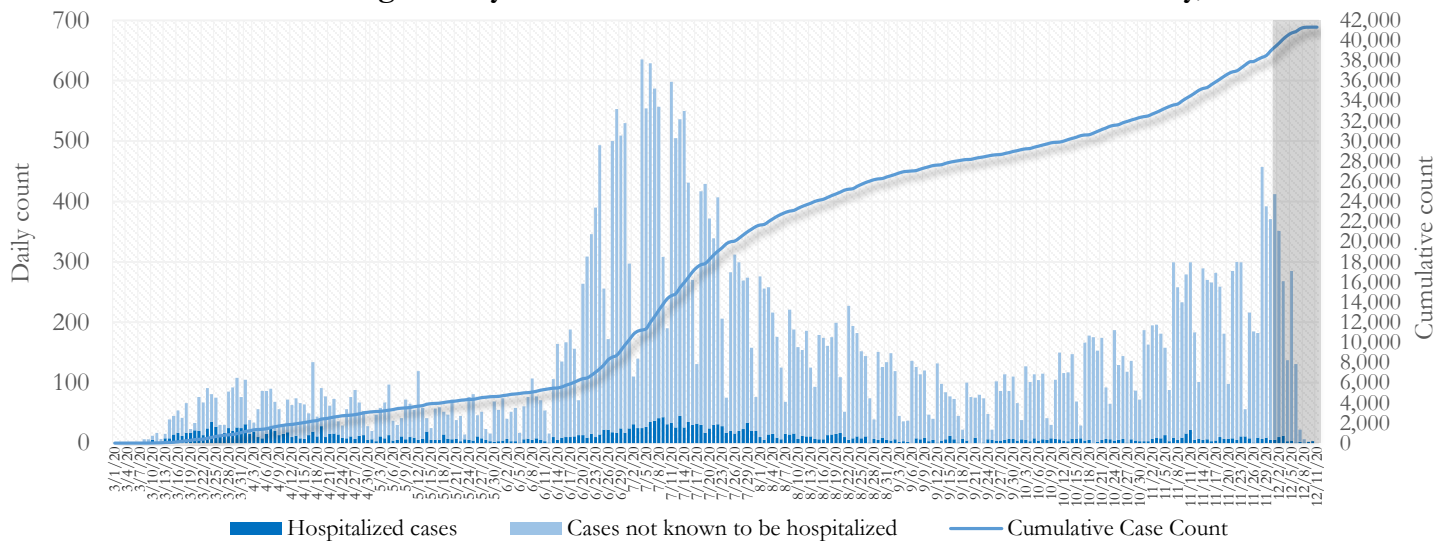


SUMMARY

- As of December 11, 2020, Fulton County has recorded **41,336 cases of the 2019 novel coronavirus (COVID-19)** and **697 confirmed COVID-19 deaths**. 103 deaths are currently being reviewed by GA DPH to confirm cause of death.
- Of the **4,042 new cases** between November 21 and December 4, the central portion of the county (Atlanta) accounted for 40% while the northern and southern parts accounted for 40% and 17% respectively.
- By city, new COVID-19 case rates range from 183.0 per 100,000 persons (Palmetto) to 462.9 per 100,000 persons (Sandy Springs). **[Fulton County Diagnoses Rates (per 100,000 persons): Cumulative – 3760.6; Incidence –367.7]**. See map showing incidence case rate by ZIP code on Pg.17.
- Among all persons diagnosed with COVID-19 in Fulton County since July 1, **5.5% required hospitalization and 1.2% died**.
- Of all testing done in Fulton County between November 23 and Dec 6, the **percent positivity rate was 7.7%**.

Fig 1. Daily and Cumulative COVID-19 cases in Fulton County, GA



*Counts shown reflect the number of confirmed cases as of 9:30 pm on 12/10/20 using the date of first positive sample collection. Where date of sample collection was not available or missing, the date of report creation in GA SENDSS was used instead. **Note:** Delays in data reporting may cause changes in data counts, particularly in the shaded portion. Data throughout this report are preliminary and subject to ongoing data cleaning processes, and thus are subject to change. This report includes data on confirmed PCR tests only. For data on antigen testing, see the [GA DPH County Indicator Reports here](#).

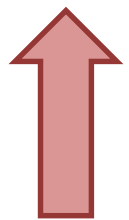
DISTRIBUTION OF COVID-19 CASES BY REGION

New cases: 40% of the new COVID-19 cases in the past 2 weeks occurred in Atlanta while 40% and 17% occurred in the Northern and Southern regions of the county respectively.

Fulton Region	% Cumulative count	% New cases*
Atlanta	43.8%	39.6%
North ¹	30.8%	39.5%
South ²	19.5%	16.6%
Unincorporated/Unknown	5.9%	4.3%

¹Includes all Fulton County cities north of Atlanta (Alpharetta, Johns Creek, Milton, Mountain Park, Roswell, Sandy Springs) | ²Includes all cities south of Atlanta (Chattahoochee Hills, College Park, East Point, Fairburn, Hapeville, Palmetto, South Fulton, and Union City) ***New cases:** Cases diagnosed in the past 2 weeks only (between 11/21/20 – 12/4/20).

In the recent two week reporting period (11/21-12/4), there were more new cases of COVID-19 in Fulton County than the previous two weeks (11/7-11/20).



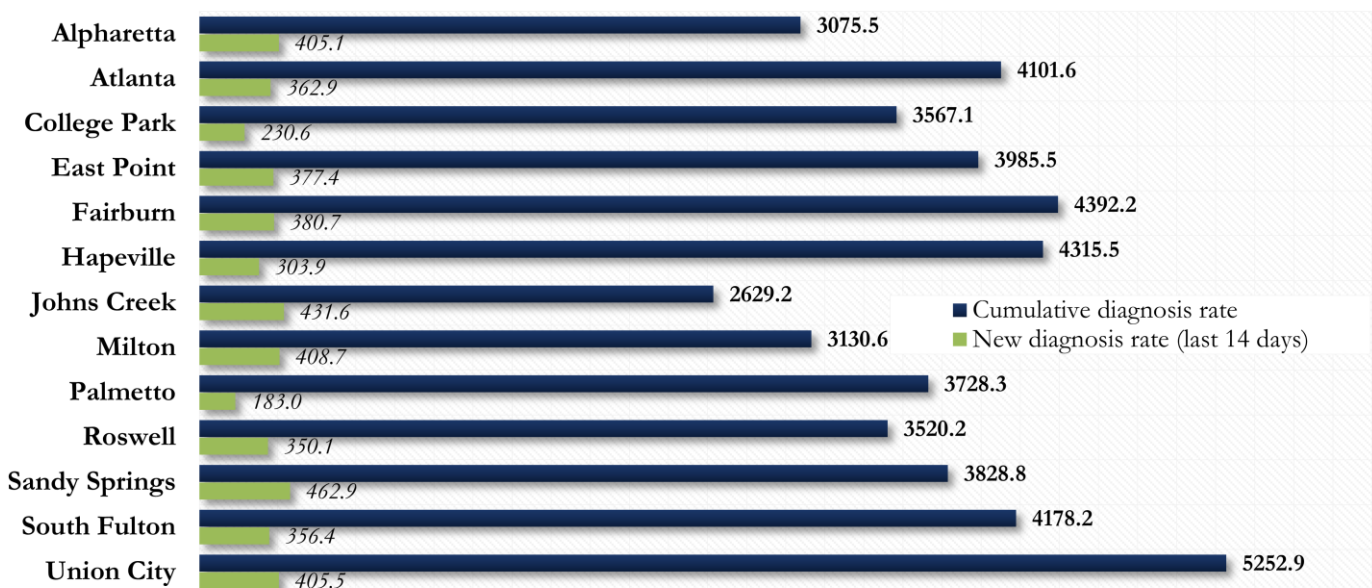
*Delayed a week to account for testing results turnaround time.

COVID-19 CASE COUNTS AND RATES BY CITY

	Prior (12/8/20)	Current Total (12/11/20)			New Cases (Period: 11/7/20 – 12/4/20) ¹			
	Count	Count	%	Cum. Rate ²	Recent 14 d. (11/21–12/4)	Prior 14 d. (11/7–11/20)	% change ³	Rate ⁴ (Last 14 d).
Alpharetta	1915	1989	4.8%	3075.5	262	188	↑ 39.4%	405.1
Atlanta	17522	18095	43.8%	4101.6	1601	1377	↑ 16.3%	362.9
Chattahoochee Hills	1	1	0.0%	-	0	0	-	-
College Park	481	495	1.2%	3567.1	32	38	↓ 15.8%	230.6
East Point	1347	1394	3.4%	3985.5	132	96	↑ 37.5%	377.4
Fairburn	634	646	1.6%	4392.2	56	53	↑ 5.7%	380.7
Hapeville	276	284	0.7%	4315.5	20	20	-	303.9
Johns Creek	2094	2199	5.3%	2629.2	361	221	↑ 63.3%	431.6
Milton	1158	1195	2.9%	3130.6	156	118	↑ 32.2%	408.7
Mountain Park	10	10	0.0%	1600.0	0	0	-	-
Palmetto	160	163	0.4%	3728.3	<10	12	↓ 33.3%	183.0
Roswell	3230	3318	8.0%	3520.2	330	256	↑ 28.9%	350.1
Sandy Springs	3885	4036	9.8%	3828.8	488	352	↑ 38.6%	462.9
South Fulton	3878	3974	9.6%	4178.2	339	248	↑ 36.7%	356.4
Union City	1068	1101	2.7%	5252.9	85	81	↑ 4.9%	405.5
Unknown	3677	2436	5.9%	-	169	120	-	-

¹**New cases:** Cases diagnosed in most recent 28 days (based on reported dates of positive sample collection). To allow for lag in reporting results of new diagnoses from samples collected in the most recent week, data used for incident diagnoses analyses were moved back by one week. ²**Cumulative diagnosis rate:** Population estimates from US Census Bureau used to calculate cumulative diagnoses rate. All rates shown are per 100,000 persons. ³**% change:** These reflect the percentage increase or decrease in new diagnoses between the 14 days preceding the most recent 7 days and the 14 days preceding that. ⁴**(Incidence) Rate:** Rate of new diagnoses in the last 14 day period preceding the immediate past week. ****Data cleaning** (either during case interviews or address geo-coding) may lead to reassignment of few cases from one territory to another based on their corrected addresses. These may appear as “decreases” when compared to the previous day’s count. These do not reflect errors in the data collection or analysis process but only reflect the minor day-to-day fluctuations in case counts that arise in an evolving public health database like COVID’s. **Note: All data reported are preliminary and subject to change.**

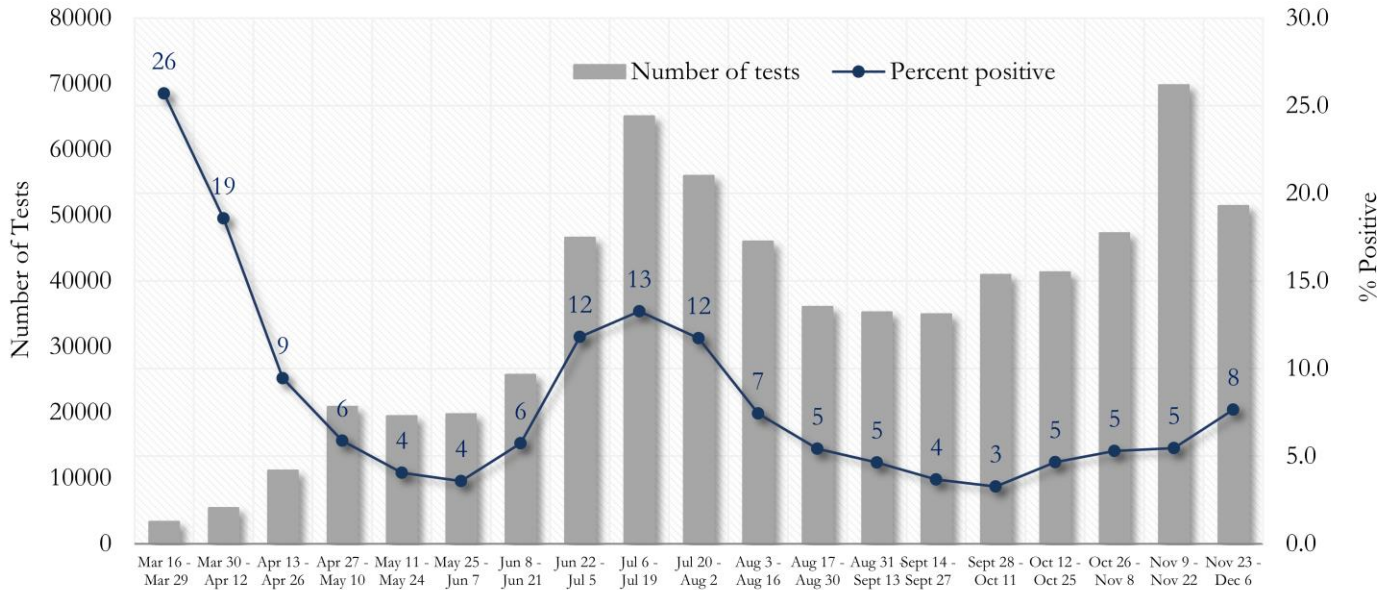
Fig. 2. Incident & Cumulative Diagnoses Rates for COVID-19 by City



*Rates shown are per 100,000 persons | **Note:** Mass testing in specific locations (e.g. long term care facilities) may cause sharp increases in the cumulative rate of COVID-19 diagnosis in those territories. All data shown are preliminary and are subject to change as testing results get updated.

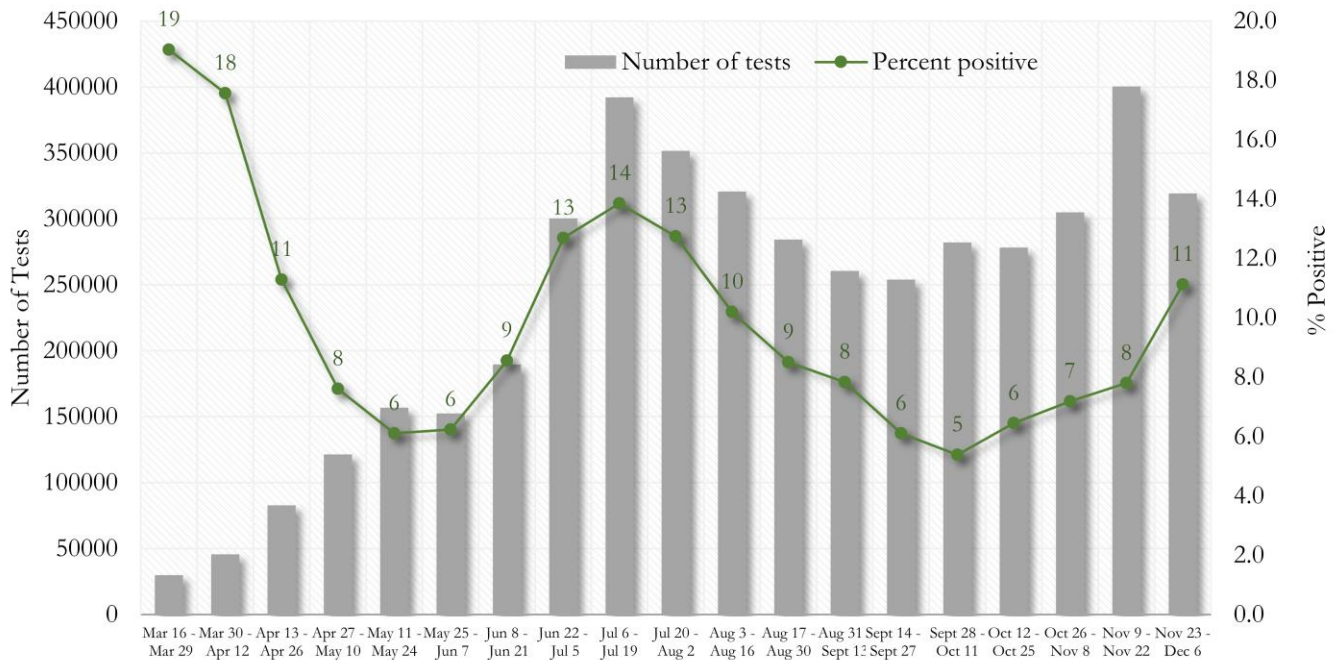
COVID-19 TESTING AND POSITIVITY IN FULTON COUNTY AND GEORGIA

Fig. 3. Trends in Positive COVID-19 Tests in Fulton County by 14-day Periods



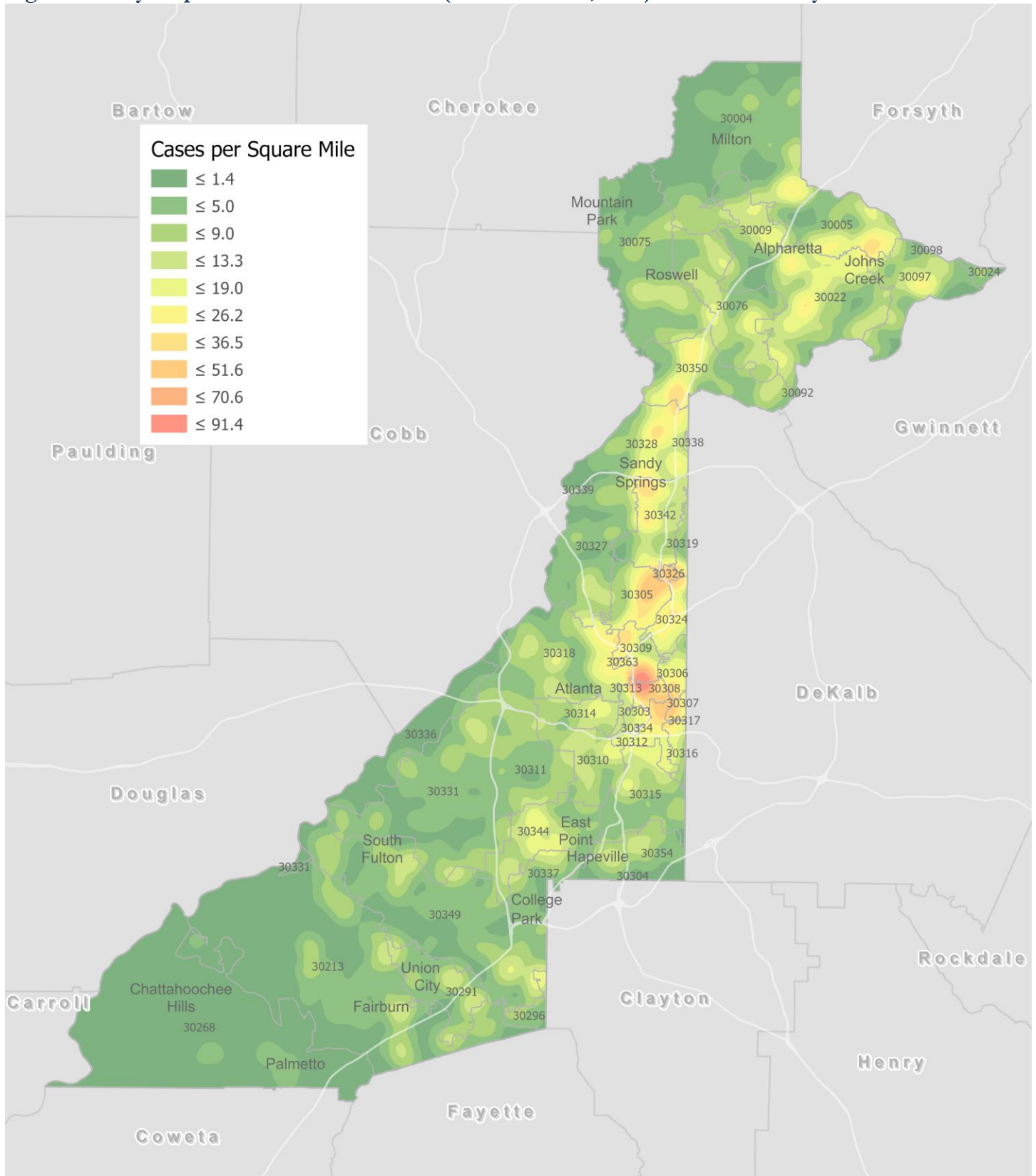
*Data on Polymerase Chain Reaction (PCR) tests only included. This rate is subject to change as more test results are reported.

Fig. 4. Trends in Positive COVID-19 Tests in Georgia by 14-day Periods



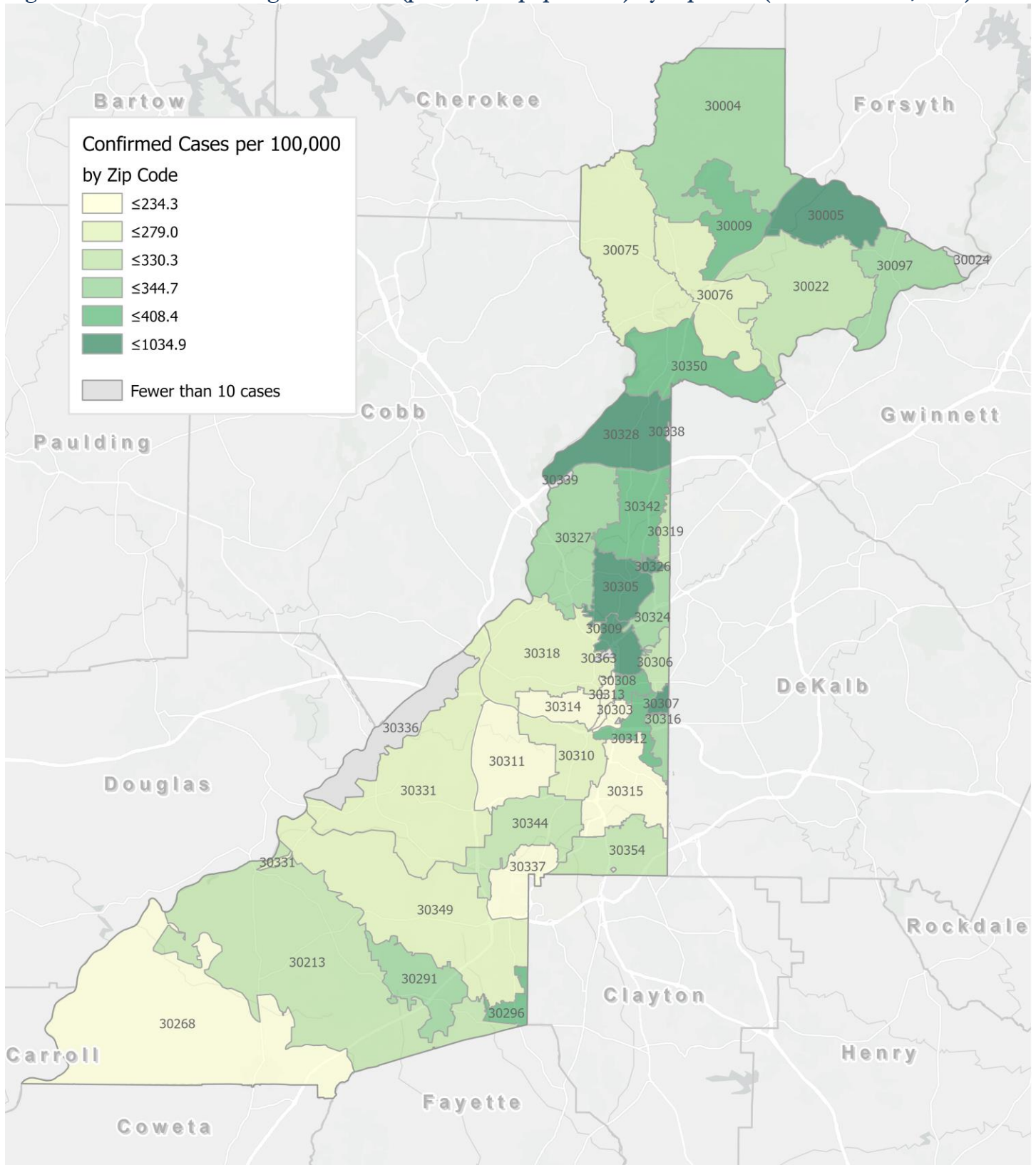
*Data on Polymerase Chain Reaction (PCR) tests only included. This rate is subject to change as more test results are reported.

Fig. 5. Density Map – New COVID-19 Cases (Nov 21– Dec 4, 2020) in Fulton County



New COVID-19 cases: Cases diagnosed in most recent 14 days (based on reported dates of positive sample collection). To allow for lag in reporting results of positive cases from samples collected in the immediate past 7 days, data used for incident diagnoses analyses are moved back by one week. Map reflects new COVID-19 cases diagnosed between Nov 21st and Dec 4th, 2020 across Fulton County, excluding LTCF cases.

Fig. 6. New COVID-19 Diagnoses Rates (per 100,000 population) by Zip Code (Nov 21– Dec 4, 2020)



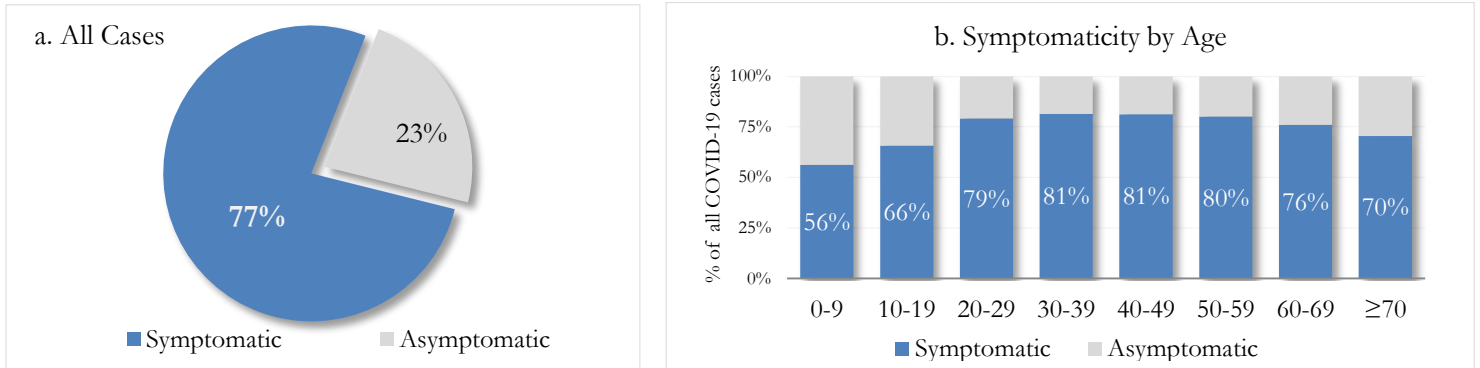
*Rates shown are per 100,000 populations.

New COVID-19 cases: Cases diagnosed in most recent 14 days (based on reported dates of positive sample collection). To allow for lag in reporting results of positive cases from samples collected in the immediate past 7 days, data used for incident diagnoses analyses are moved back by one week. Data used excludes outbreak-related cases at long-term care facilities and map shown reflects only the new non-LTCF cases diagnosed between the dates shown in map title. See page 17 for zip code break down table.

REPORTING SYMPTOMS AMONG PERSONS WITH COVID-19 IN FULTON

People with COVID-19 have reported a wide range of symptoms ranging from mild symptoms to severe illness. Symptoms may appear 2-14 days after exposure to the virus. Symptoms reported include: cough, shortness of breath/difficulty breathing, fever, chills, muscle pain, headache, sore throat, congestion, nausea or vomiting, diarrhea, or new loss of taste or smell – Centers for Disease Control and Prevention (CDC)
<https://www.cdc.gov/coronavirus/2019-ncov/symptoms-testing/symptoms.html>

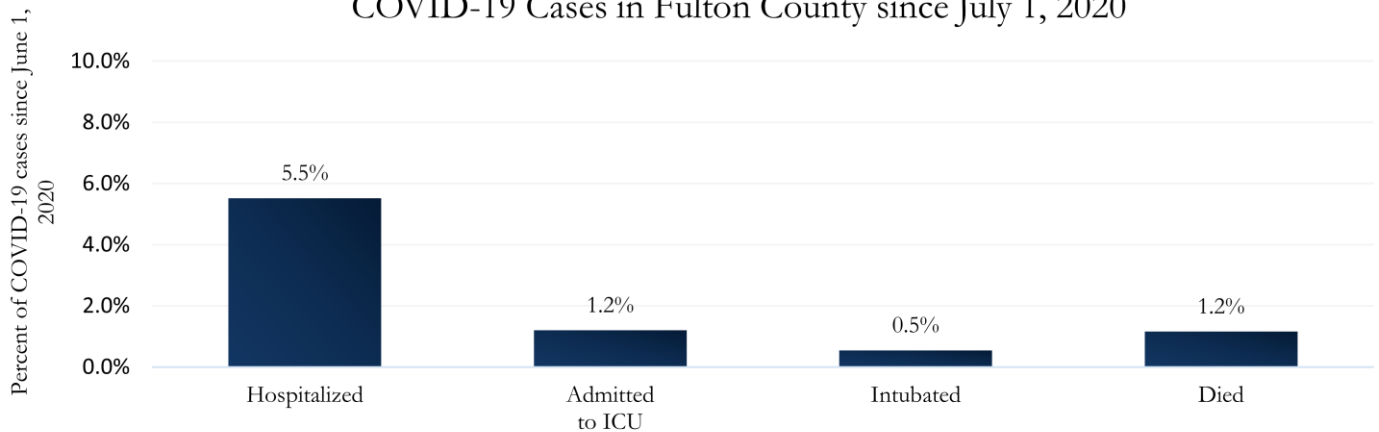
Fig. 7a & b. Total Proportion Reporting Symptoms in Fulton County



COVID-19 cases who have been case interviewed or had medical charts reviewed as of 12/10/20 only. n = 27,610

COVID-19 HOSPITALIZATIONS, ICU ADMISSIONS AND DEATHS IN FULTON

Fig. 8. Hospitalizations, ICU Admissions, Intubations, and Deaths among COVID-19 Cases in Fulton County since July 1, 2020



DEMOGRAPHIC DISTRIBUTIONS – COVID-19 CASES AND DEATHS

A. Distribution of COVID-19 cases by gender, age, and race in Fulton County by Fulton Region

	North Fulton Cities ¹ Count (%)	Atlanta Count (%)	South Fulton Cities ² Count (%)	Unknown City Count (%)	All Fulton Count (%)
Total COVID-19 cases	12747	18095	8058	2436	41336
Gender: Female	6574 (52%)	9048 (50%)	4623 (57%)	1201 (49%)	21446 (52%)
Male	6058 (48%)	8801 (49%)	3367 (42%)	1166 (48%)	19392 (47%)
Unknown*	115 (1%)	246 (1%)	68 (1%)	69 (3%)	498 (1%)
Age: 0-9	436 (3%)	372 (2%)	278 (3%)	67 (3%)	1153 (3%)
10-19	1772 (14%)	1324 (7%)	610 (8%)	163 (7%)	3869 (9%)
20-29	2725 (21%)	5423 (30%)	1507 (19%)	625 (26%)	10280 (25%)
30-39	1969 (15%)	4015 (22%)	1669 (21%)	512 (21%)	8165 (20%)
40-49	2027 (16%)	2366 (13%)	1475 (18%)	377 (15%)	6245 (15%)
50-59	1956 (15%)	1937 (11%)	1133 (14%)	319 (13%)	5345 (13%)
60-69	1009 (8%)	1260 (7%)	738 (9%)	188 (8%)	3195 (8%)
≥70	846 (7%)	1345 (7%)	640 (8%)	175 (7%)	3006 (7%)
Unknown*	<10	53 (0%)	<10	10 (0%)	78 (0%)
Race: Asian, NH	610 (5%)	363 (2%)	39 (0%)	51 (2%)	1063 (3%)
Black, NH	1454 (11%)	7908 (44%)	5866 (73%)	853 (35%)	16081 (39%)
White, NH	5761 (45%)	5244 (29%)	413 (5%)	626 (26%)	12044 (29%)
Hispanic	2221 (17%)	1178 (7%)	665 (8%)	230 (9%)	4294 (10%)
Other, NH	516 (4%)	644 (4%)	188 (2%)	89 (4%)	1437 (3%)
Unknown*	2185 (17%)	2758 (15%)	887 (11%)	587 (24%)	6417 (16%)

*Unknown includes cases not yet interviewed.

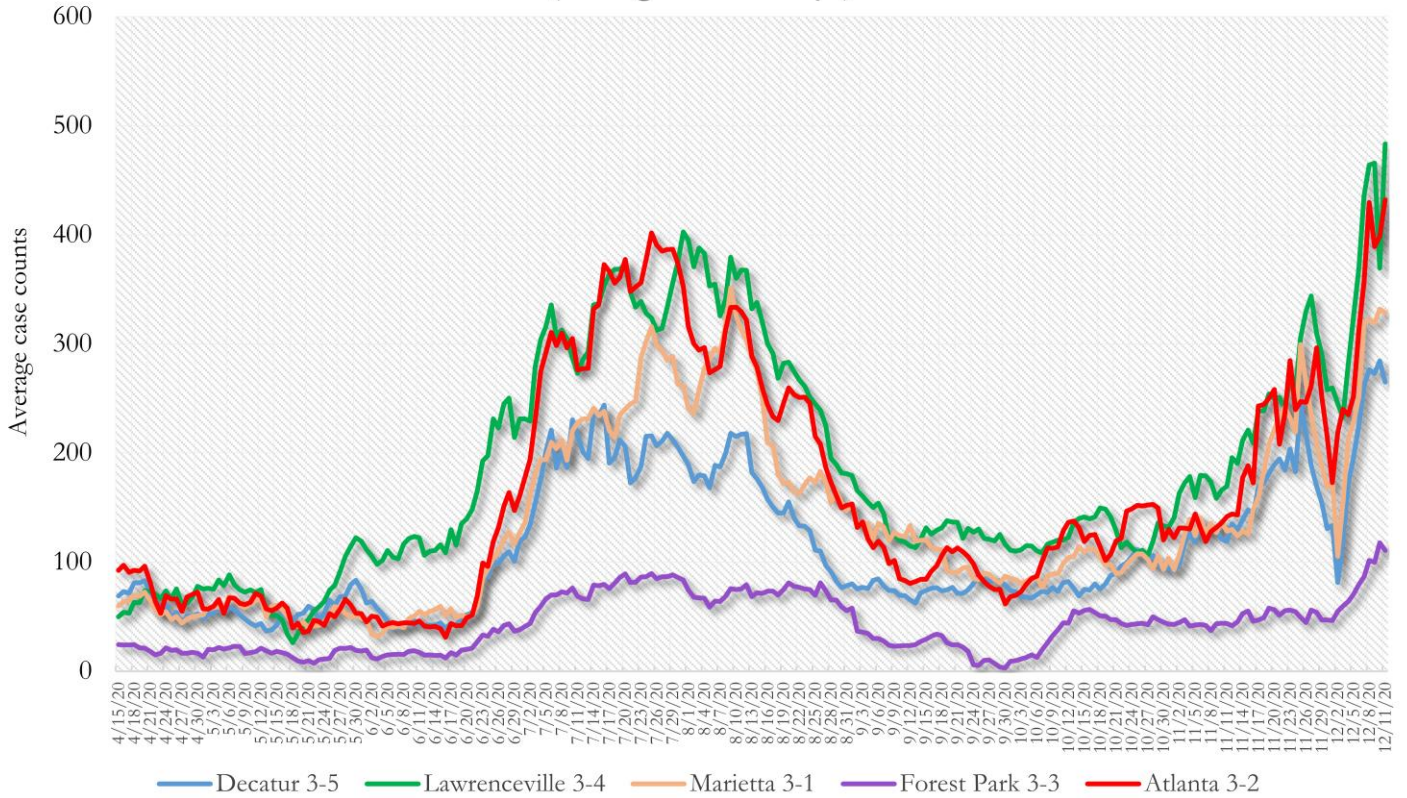
B. Distribution of COVID-19 deaths by gender, age, and race in Fulton County by Fulton Region

	North Fulton Cities ¹ Count (%)	Atlanta Count (%)	South Fulton Cities ² Count (%)	Unknown City Count (%)	All Fulton Count (%)
Total COVID-19 deaths	152	336	182	27	697
Gender: Female	71 (47%)	153 (46%)	91 (50%)	12 (44%)	327 (47%)
Male	81 (53%)	183 (54%)	91 (50%)	15 (56%)	370 (53%)
Unknown	0	0	0	0	0
Age: ≤ 29	<10	<10	<10	0	<10
30-39	<10	<10	<10	<10	14 (2%)
40-49	<10	<10	10 (5%)	<10	27 (4%)
50-59	<10	30 (9%)	21 (12%)	<10	62 (9%)
60-69	18 (12%)	65 (19%)	42 (23%)	<10	127 (18%)
≥70	120 (79%)	221 (66%)	104 (57%)	17 (63%)	462 (66%)
Unknown	0	0	0	0	0
Race: Asian, NH	<10	<10	<10	<10	12 (2%)
Black, NH	27 (18%)	273 (81%)	148 (81%)	11 (41%)	459 (66%)
White, NH	106 (70%)	51 (15%)	24 (13%)	13 (48%)	194 (28%)
Hispanic	15 (10%)	<10	<10	<10	29 (4%)
Other, NH	0	<10	<10	0	<10
Unknown	0	<10	0	0	<10

¹Includes all Fulton County cities north of Atlanta (Alpharetta, Johns Creek, Milton, Mountain Park, Roswell, Sandy Springs) ²Includes all cities south of Atlanta (College Park, Chattahoochee Hills, East Point, Fairburn, Hapeville, Palmetto, South Fulton, Union City). **Note:** All data reported are preliminary and subject to change. This table includes data on all confirmed COVID-19 deaths and is subject to change as GA DPH completes cause of death confirmation processes.

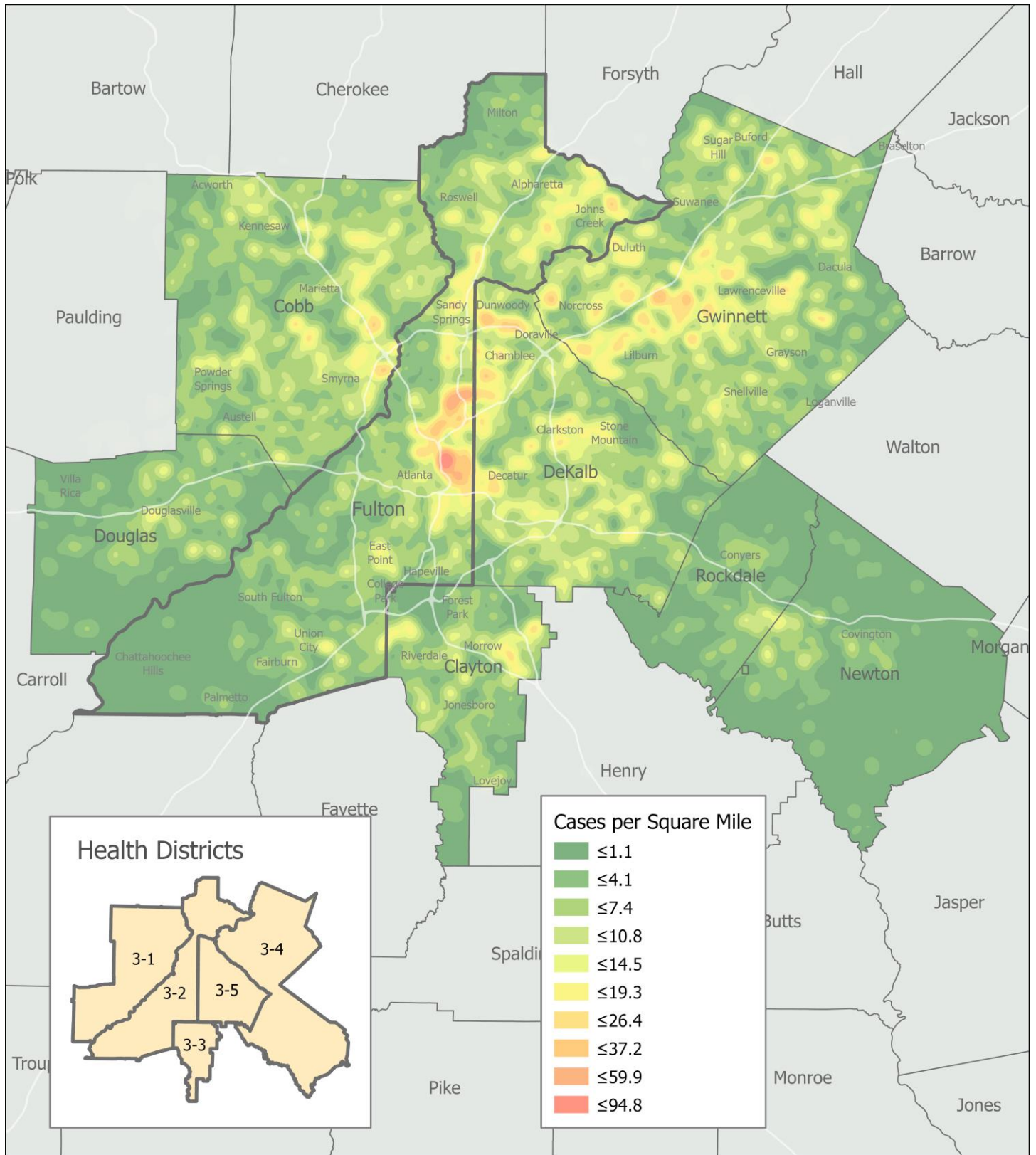
COVID-19 CASE TRENDS IN FULTON AND SURROUNDING DISTRICTS

**Fig. 9. Daily Case Counts for Atlanta Metro Districts
(Averaged over 7 days)**



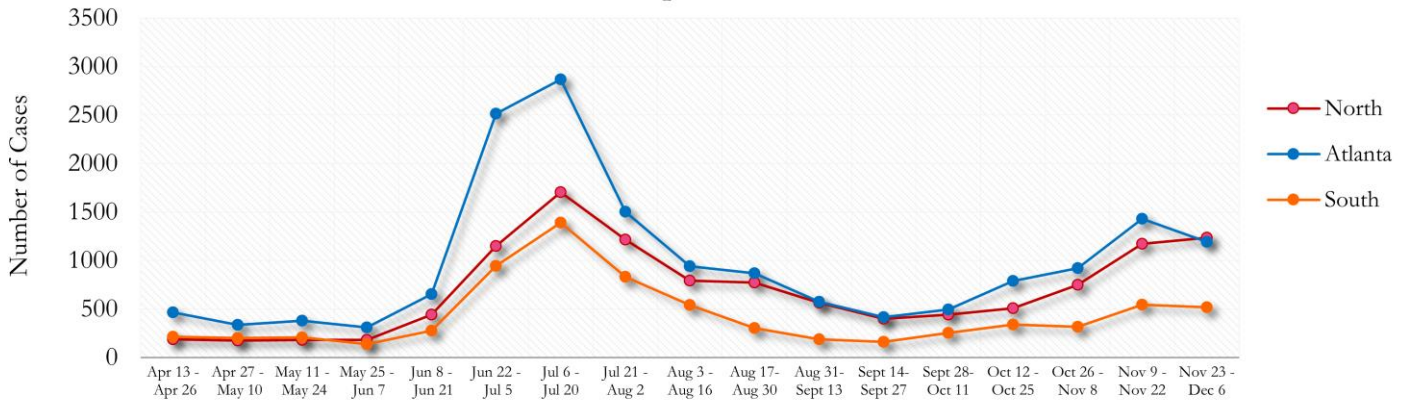
*Graph shows the average number of cases calculated from the daily cumulative case counts in the metro Atlanta districts. Increases in daily cumulative case counts may include cases diagnosed earlier during the pandemic but were only recently reported to the state as cases diagnosed belonging to these districts. Delays in data reporting may cause the trend line to appear as decreasing.

Fig. 10. COVID-19 Cases in Fulton County and Surrounding Districts (Nov 21 – Dec 4, 2020)



TRENDS IN COVID-19 CASES AMONG DEMOGRAPHIC GROUPS (14 DAY PERIODS)

Fig. 11. Trends in Geographic distribution of COVID-19 Cases in Fulton County by 14-day periods



In the past two weeks, the northern region of Fulton County accounted for the majority of new cases.

*North - Includes all Fulton cities north of Atlanta (Alpharetta, Johns Creek, Milton, Mountain Park, Roswell, Sandy Springs)

*South - Includes all Fulton cities south of Atlanta (College Park, Chattahoochee Hills, East Point, Fairburn, Hapeville, Palmetto, South Fulton, and Union City)

Fig. 12. Trends in Racial Distribution of COVID-19 Cases in Fulton County by 14-day periods

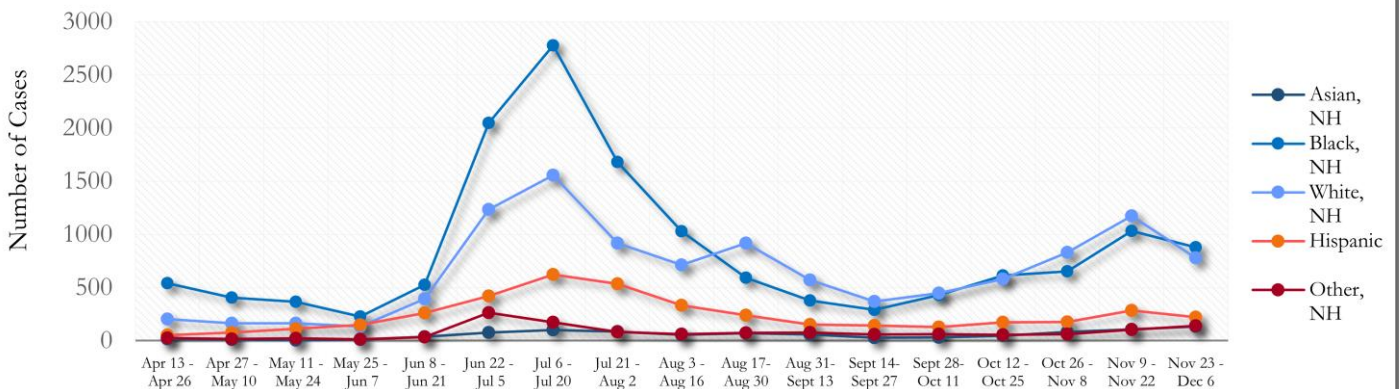
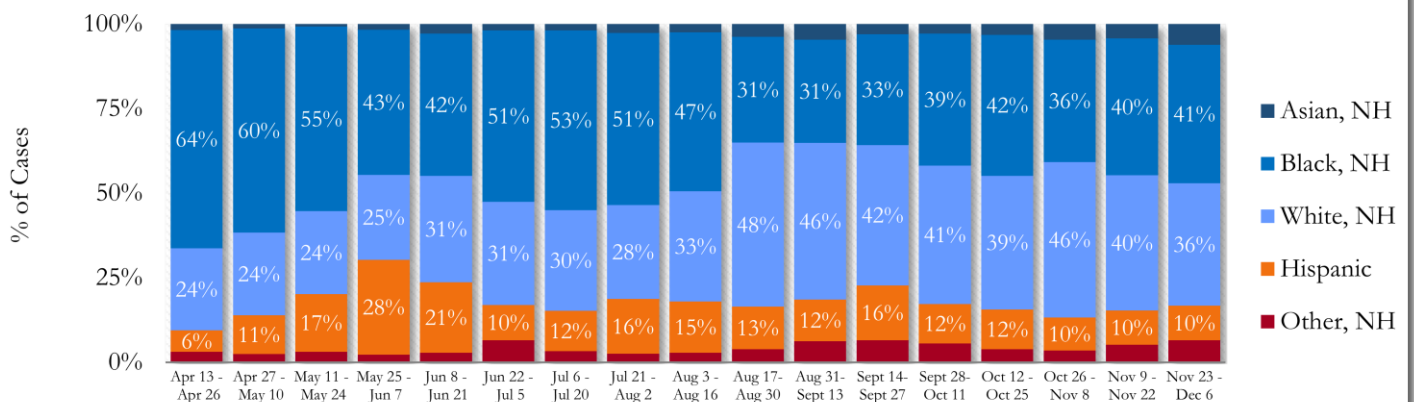


Fig. 13. Racial Distribution of COVID-19 Cases in Fulton County by 14-day periods



About 16% of COVID cases are missing data on patient race and ethnicity. The majority of new cases in the past two weeks were Black, NH (41%) and White, NH (36%).

Fig. 14. Trends in Gender Distribution of COVID-19 Cases in Fulton County by 14-day periods

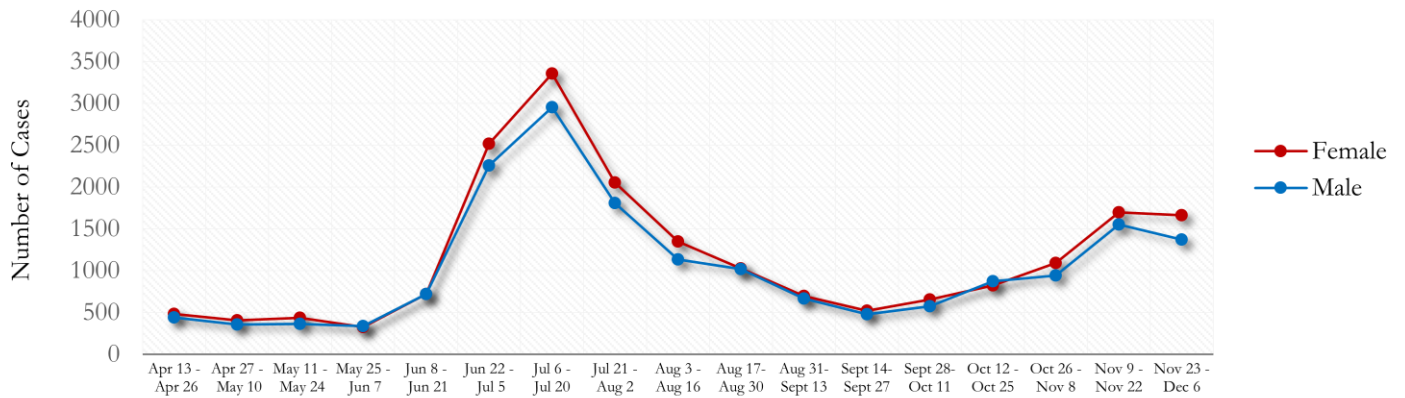
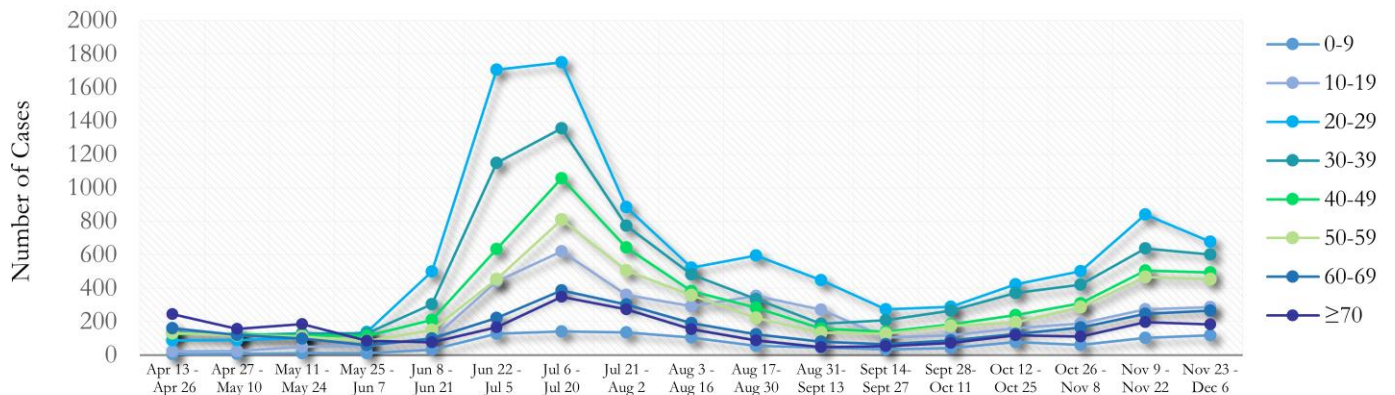
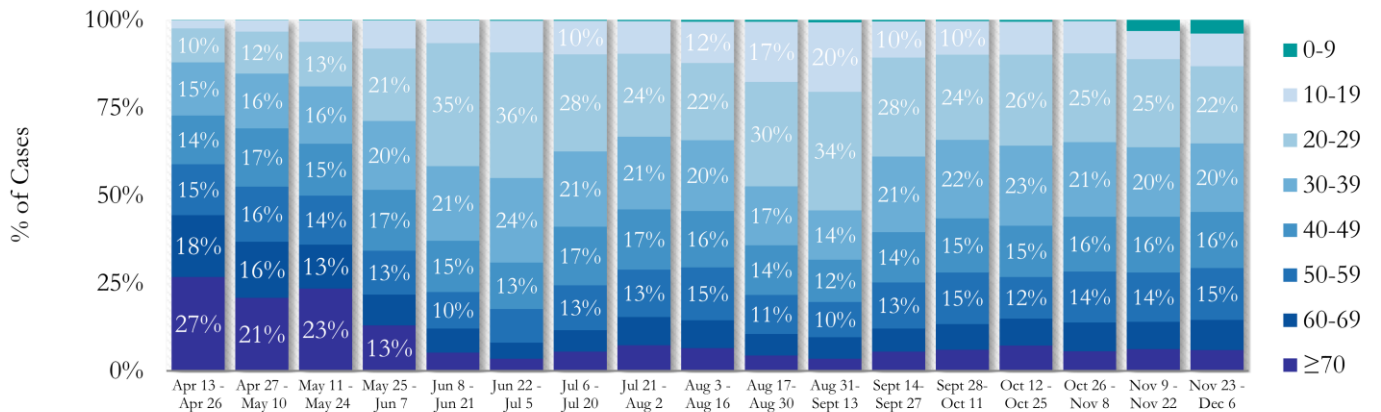


Fig. 15. Trends in Age Distribution of COVID-19 Cases in Fulton County by 14-day periods



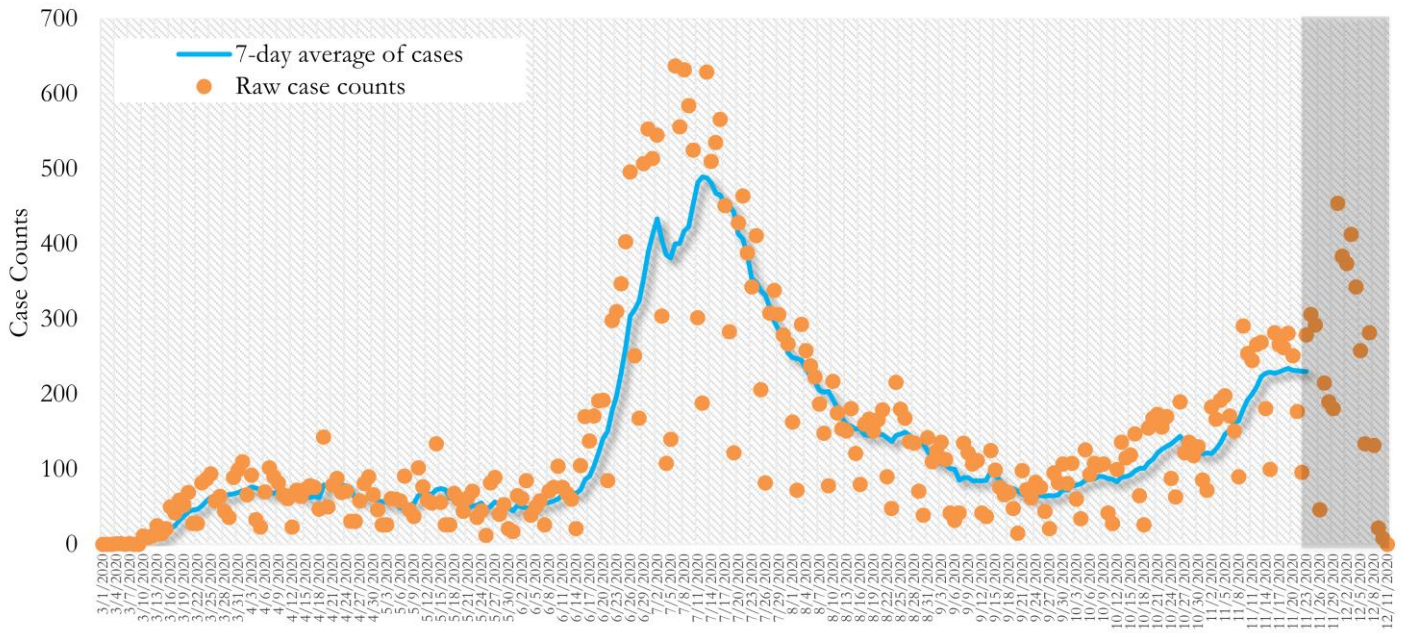
Earlier (March-May 2020) large proportions of reported cases were among persons aged 60 and older. In the most recent two weeks, 20-29 year olds accounted for the highest number of new cases among all age groups, followed by 30-39 year olds.

Fig. 16. Age Distribution of COVID-19 Cases in Fulton County by 14-day periods



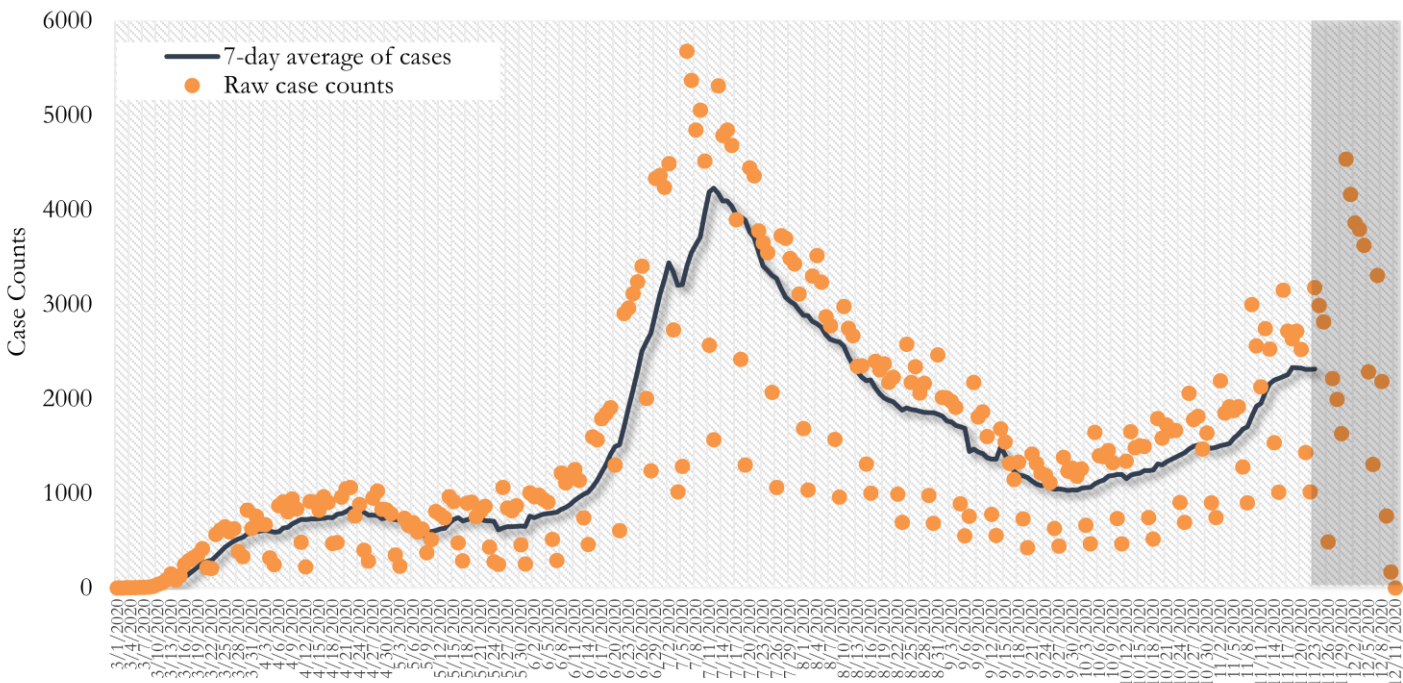
TRENDS IN COVID-19 CASES, HOSPITALIZATIONS AND DEATHS (7-DAY MOVING AVE.)

Fig. 17. New COVID-19 Cases in Fulton County Daily (Averaged over 7 days)



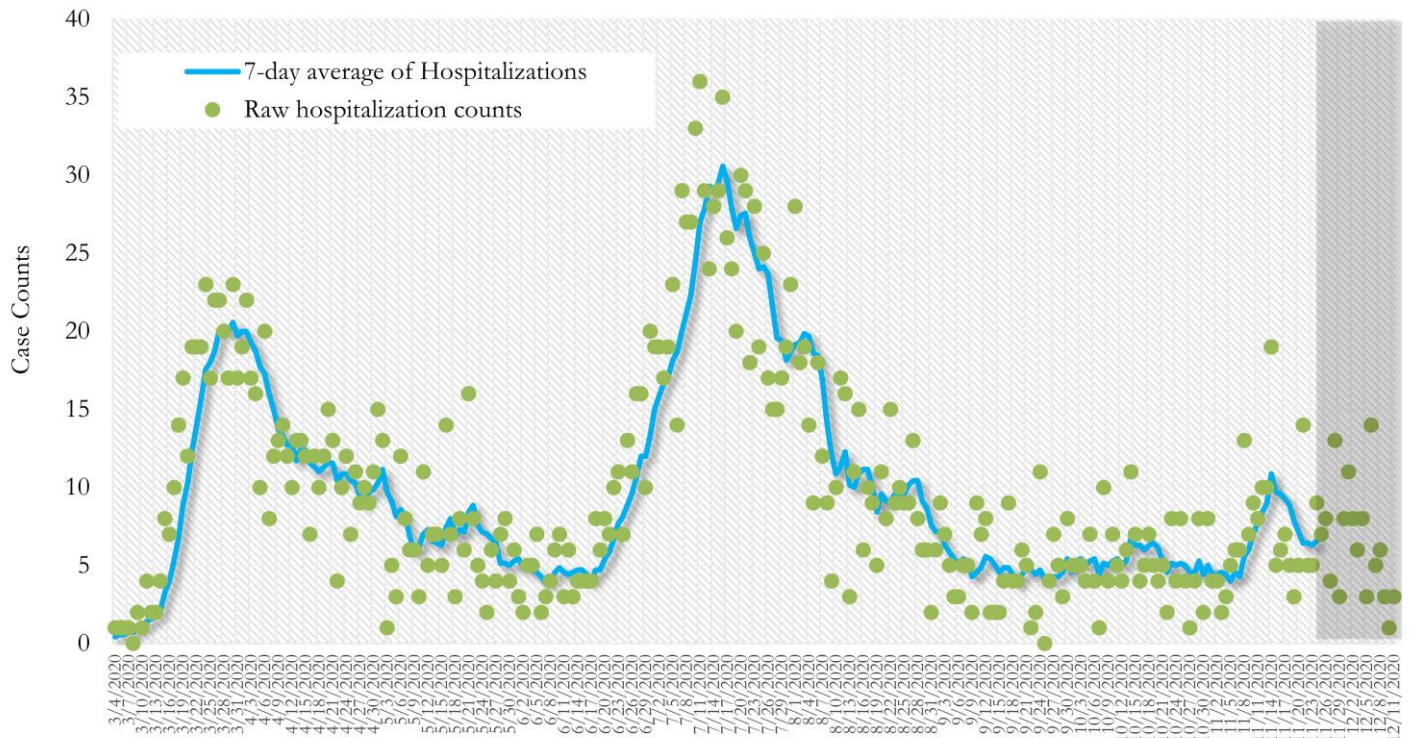
*Date of collection of first positive sample used (report creation date used where sample collection date is missing). Graph above reflects the trend in COVID-19 diagnosis. Due to the high volume of testing in recent weeks, there have been delays in reporting lab results. Thus, the trend is subject to change as more lab results get added to the state surveillance database.

Fig. 18. New COVID-19 Cases in Georgia State Daily (Averaged over 7 days)



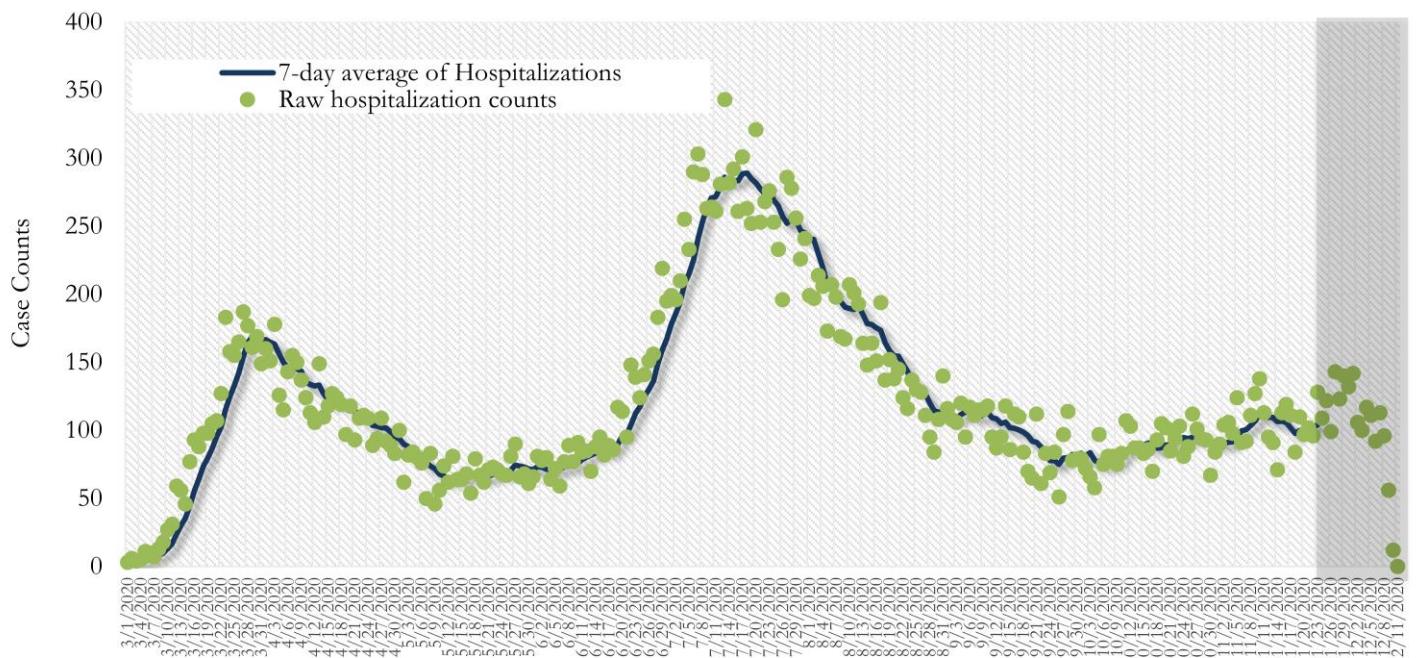
*Date of collection of first positive sample used (report creation date used where sample collection date is missing). Graph above reflects the trend in COVID-19 diagnosis. Due to the high volume of testing in recent weeks, there have been delays in reporting lab results. Thus, the trend is subject to change as more lab results get added to the state surveillance database.

Fig. 19. COVID-19 Hospitalizations in Fulton County Daily (Averaged over 7 days)



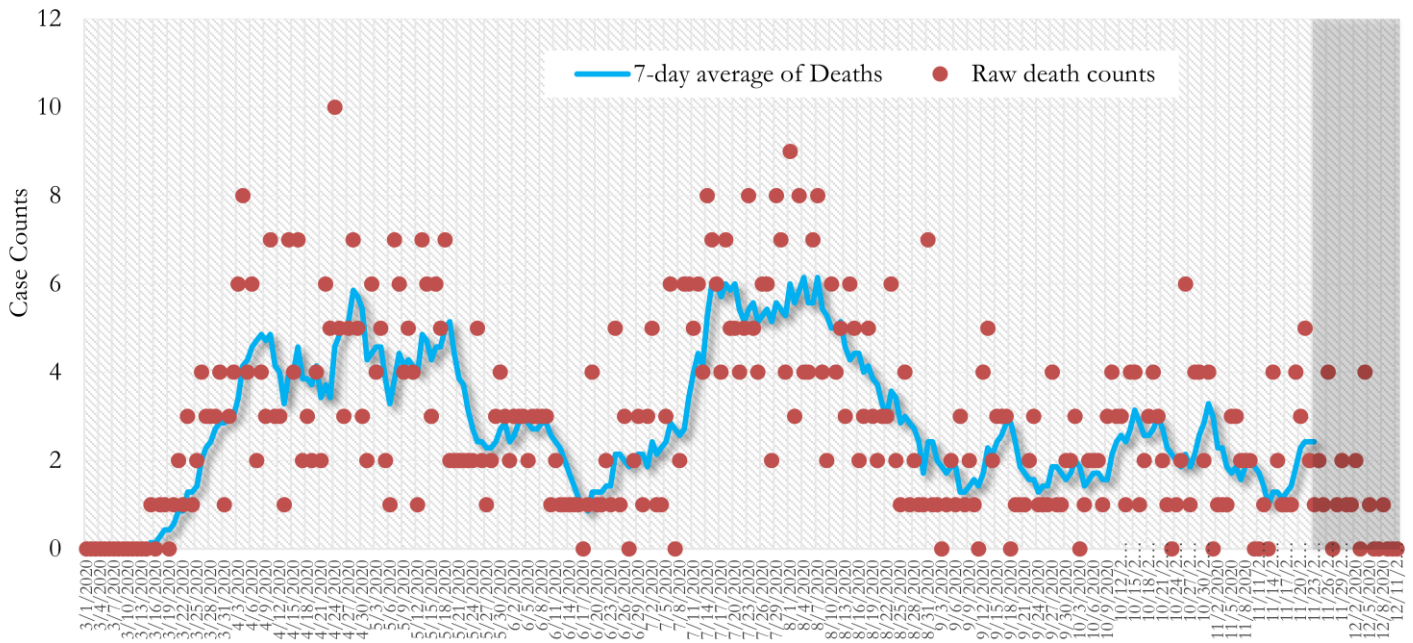
*Reported date of hospital admission used. Graph above reflects the trend in COVID-19 hospitalizations. Due to the high volume of new cases being added daily, there have been delays in reporting hospitalization data. Thus, the trend is likely to change as more hospitalization data is reported in the state surveillance database.

Fig. 20. COVID-19 Hospitalizations in Georgia State Daily (Averaged over 7 days)



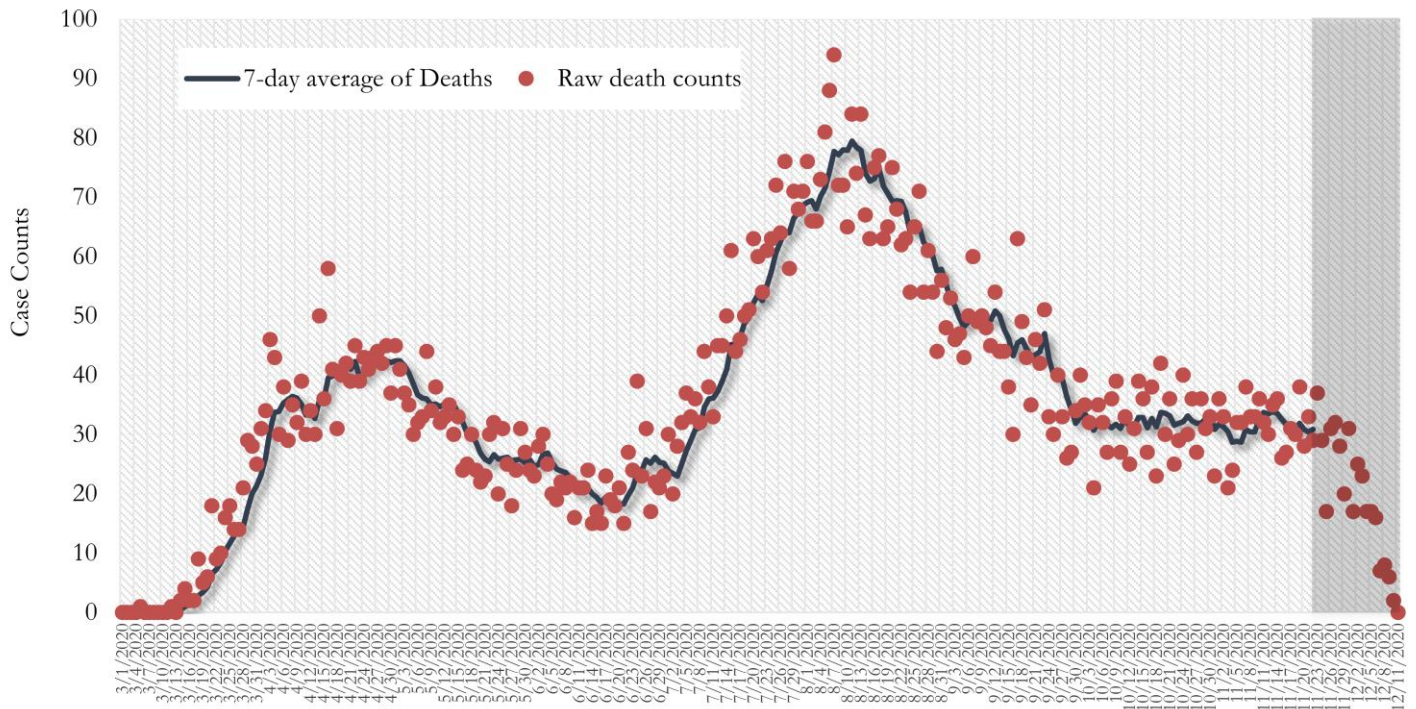
*Reported date of hospital admission used. Graph above reflects the trend in COVID-19 hospitalizations. Due to the high volume of new cases being added daily, there have been delays in reporting hospitalization data. Thus, the trend is likely to change as more hospitalization data is reported in the state surveillance database.

Fig. 21. COVID-19 Deaths in Fulton County Daily (Averaged over 7 days)



* Reported date of death used. Graph above reflects the trend in deaths attributed to COVID-19. The trend is likely to change as more data on deaths among persons with COVID-19 is reported in the state surveillance database.

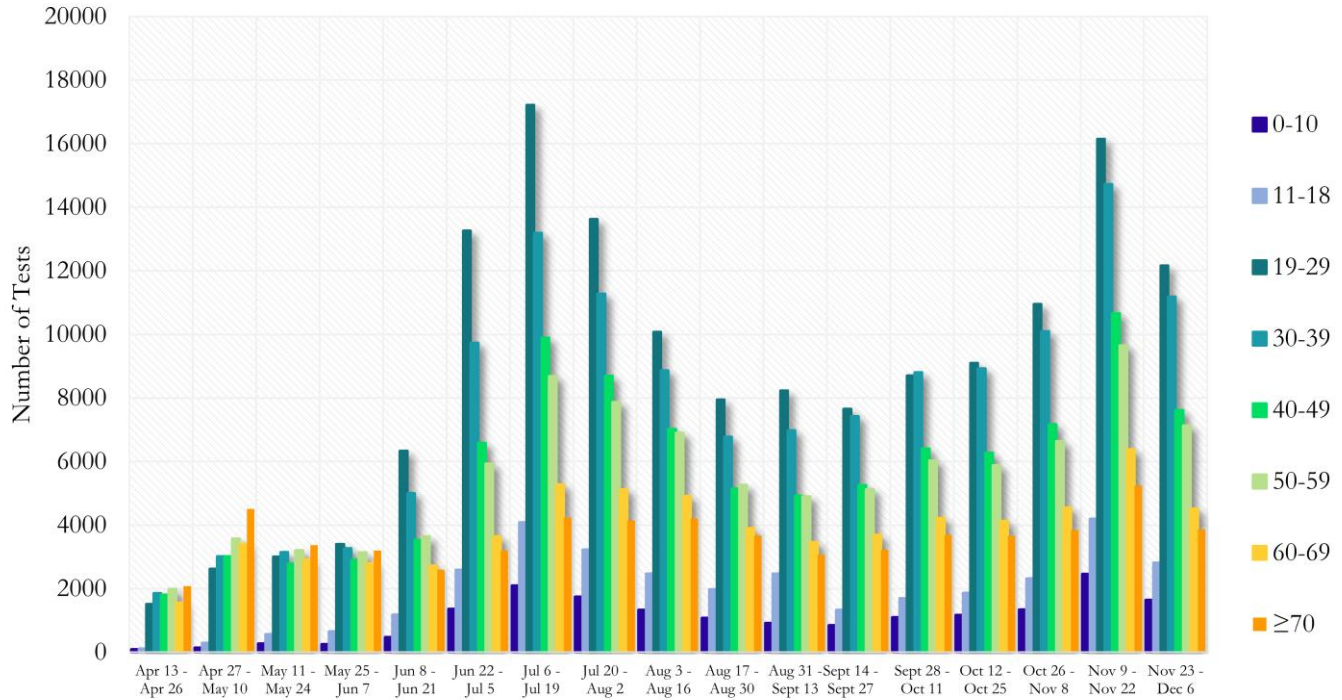
Fig. 22. COVID-19 Deaths in Georgia State Daily (Averaged over 7 days)



* Reported date of death used. Graph above reflects the trend in deaths attributed to COVID-19. The trend is likely to change as more data on deaths among persons with COVID-19 is reported in the state surveillance database.

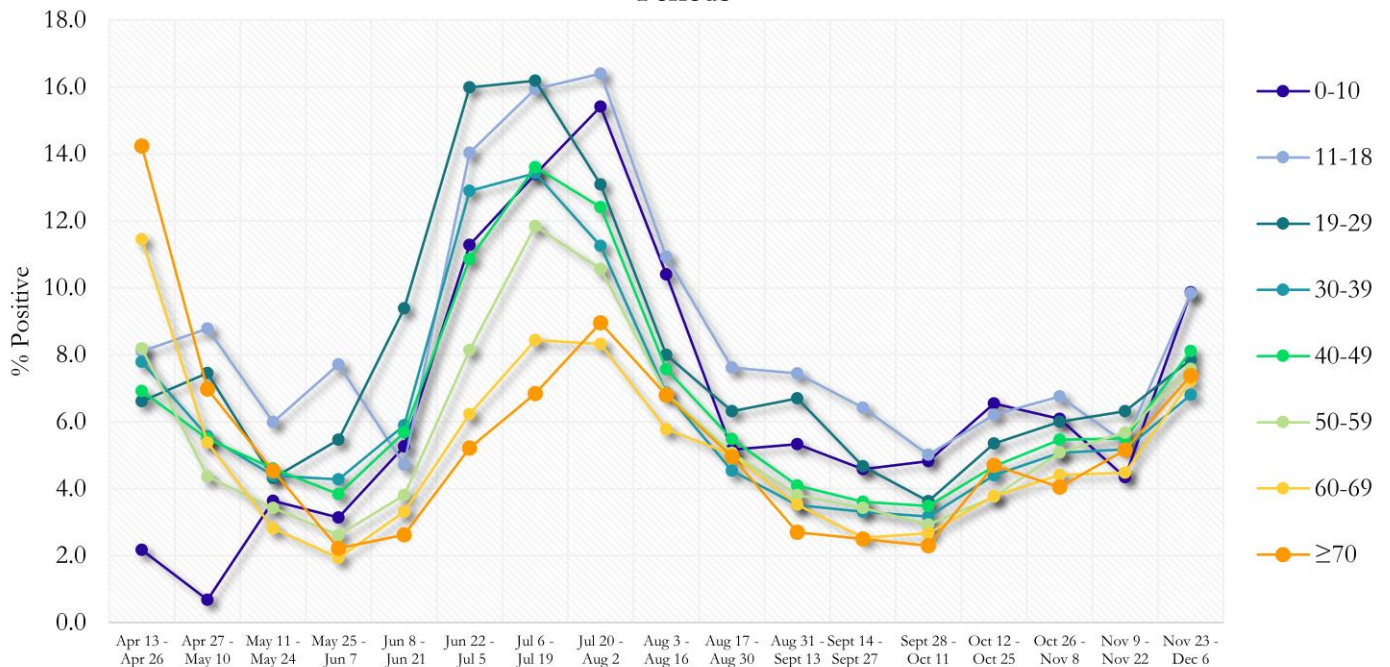
COVID-19 TESTING AND POSITIVITY IN FULTON COUNTY BY AGE AND RACE

Fig. 23. COVID-19 Tests by Age in Fulton County by 14-day Periods



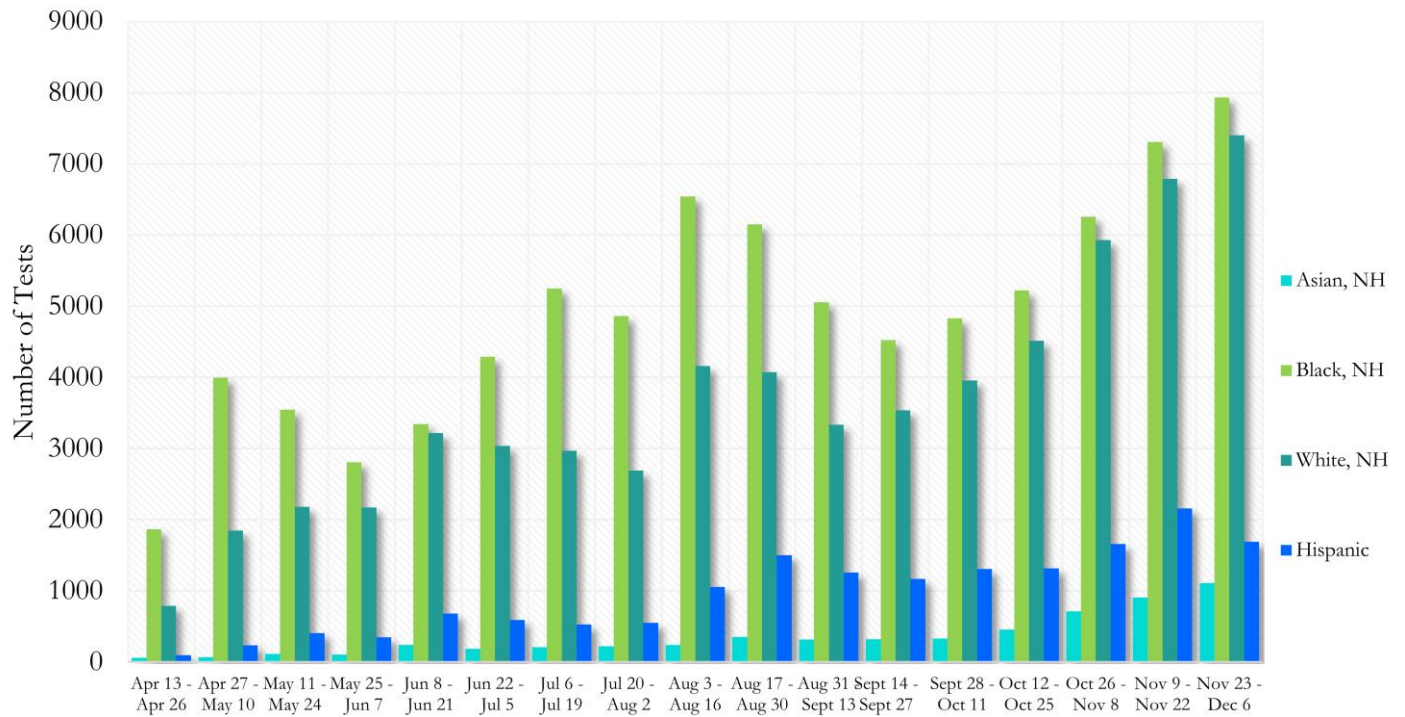
*Data on Polymerase Chain Reaction (PCR) tests only included.

Fig. 24. Percent Positive COVID-19 Tests by Age Group in Fulton County by 14-day Periods



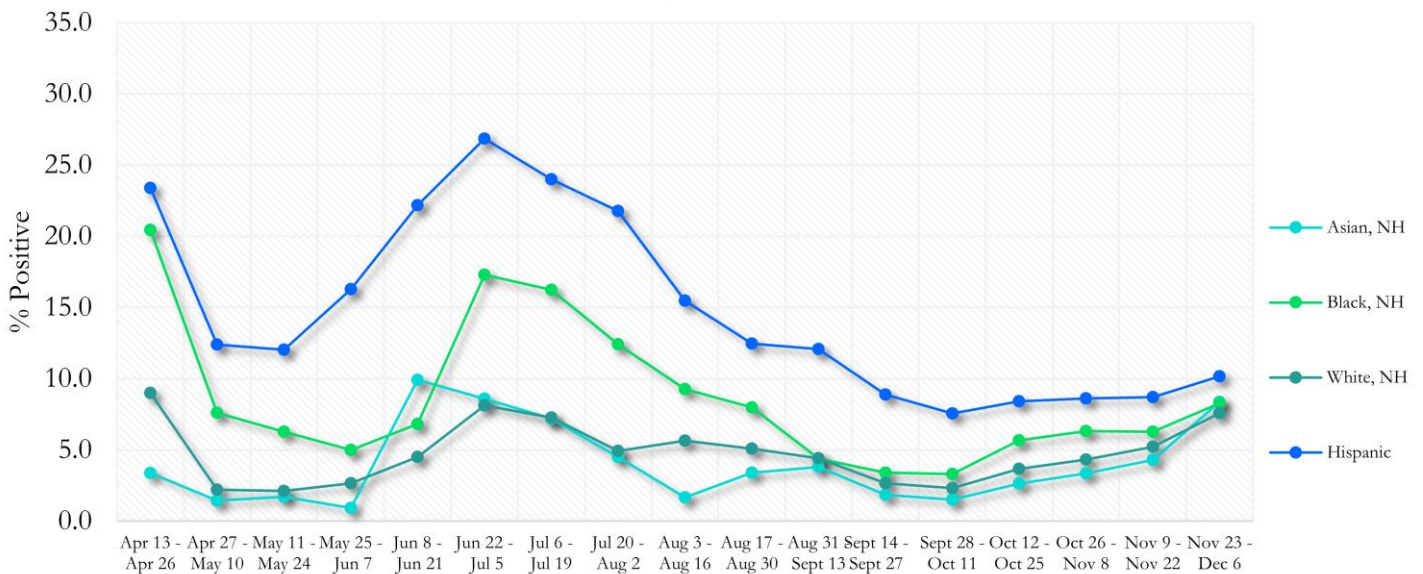
*Data on Polymerase Chain Reaction (PCR) tests only included.

Fig. 25. COVID-19 Tests by Race and Ethnicity in Fulton County by 14-day Periods



*Data on Polymerase Chain Reaction (PCR) tests only included.

Fig. 26. Percent Positive COVID-19 Tests by Race and Ethnicity in Fulton County by 14-day Periods



*Data on Polymerase Chain Reaction (PCR) tests only included.

COVID-19 CASE COUNTS BY ZIP CODE

	Prior (12/8/20)	Current Total (12/11/20)		New Cases (Period: 11/7/20 – 12/4/20) ¹		
	Count	Count	%	Recent 14 d. (Nov 21- Dec 4)	Prior 14 d. (Nov 7- Nov 20)	% change ²
All Fulton	40016	41336	100%	4042	3182	↑ 27.0%
30004	1474	1531	3.7%	201	154	↑ 30.5%
30005	873	906	2.2%	167	66	↑ 153.0%
30009	697	725	1.8%	89	71	↑ 25.4%
30022	1950	2040	0.9%	290	226	↑ 28.3%
30023	<10	10	<0.1%	<10	0	-
30024	32	34	<0.1%	<10	<10	-
30075	1558	1609	3.9%	140	135	↑ 3.7%
30076	1554	1587	3.8%	161	109	↑ 47.7%
30080	<10	<10	<0.1%	<10	0	-
30097	548	575	1.4%	100	47	↑ 112.8%
30098	-	-	-	0	0	-
30135	<10	<10	<0.1%	0	0	-
30138	<10	<10	<0.1%	0	0	-
30139	-	-	-	0	0	-
30213	1528	1571	3.8%	142	120	↑ 18.3%
30268	246	252	0.6%	17	18	↓ 5.6%
30291	1055	1080	2.6%	86	71	↑ 21.1%
30296	104	107	0.3%	25	11	↑ 127.3%
30301	14	14	<0.1%	<10	<10	-
30303	462	471	1.1%	16	26	↓ 38.5%
30305	1254	1299	3.1%	162	117	↑ 38.5%
30306	537	561	1.4%	63	63	-
30307	269	280	0.7%	34	<10	↑ 277.8%
30308	878	913	2.2%	89	80	↑ 11.3%
30309	1267	1305	3.2%	135	119	↑ 13.4%
30310	981	1010	2.4%	74	54	↑ 37.0%
30311	1048	1092	2.6%	81	69	↑ 17.4%
30312	1162	1193	2.9%	111	98	↑ 13.3%
30313	380	387	0.9%	17	29	↓ 41.4%
30314	718	743	1.8%	50	31	↑ 61.3%
30315	1203	1245	3.0%	94	104	↓ 9.6%
30316	508	529	1.3%	42	34	↑ 23.5%
30318	2377	2452	5.9%	208	180	↑ 15.6%
30319	222	235	0.6%	31	15	↑ 106.7%
30321	13	12	<0.1%	<10	0	-
30324	1301	1330	3.2%	115	111	↑ 3.6%
30326	412	428	1.0%	55	43	↑ 27.9%
30327	914	960	2.3%	95	93	↑ 2.2%
30328	1340	1387	3.4%	169	137	↑ 23.4%
30331	2237	2305	5.6%	171	98	↑ 74.5%
30334	13	13	<0.1%	0	0	-
30336	113	113	0.3%	10	<10	↑ 11.1%
30337	454	468	1.1%	30	31	↓ 3.2%
30338	106	109	0.3%	11	<10	↑ 175.0%
30339	278	291	0.7%	17	<10	↑ 183.3%
30340	33	35	<0.1%	<10	0	-
30341	34	37	<0.1%	<10	<10	-
30342	1651	1711	4.1%	154	107	↑ 43.9%
30344	1235	1281	3.1%	119	85	↑ 40.0%
30345	25	27	<0.1%	0	0	-

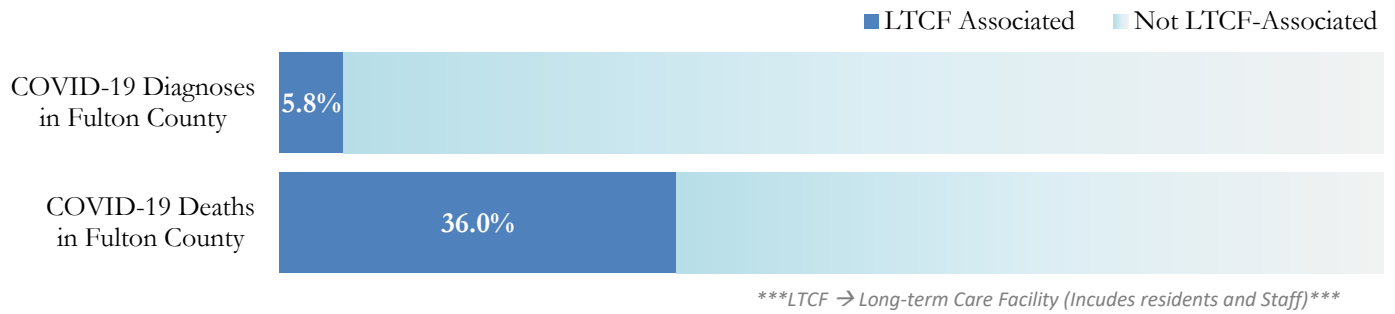
30349	2401	2449	5.9%	176	156	↑ 12.8%
30350	1026	1070	2.6%	161	122	↑ 32.0%
30354	587	605	1.5%	57	45	↑ 26.7%
30358	<10	<10	<0.1%	0	0	-
30363	108	110	0.3%	<10	15	↓ 40.0%
30374	35	35	<0.1%	0	<10	↓ 100.0%
30606	<10	<10	<0.1%	0	0	-
31131	<10	<10	<0.1%	<10	0	-
31150	<10	<10	<0.1%	0	0	-
Unknown	2090	783	1.9%	55	55	-

¹**New cases:** Cases diagnosed in most recent 28 days (based on reported dates of positive sample collection). To allow for lag in reporting results of new diagnoses from samples collected in the most recent week, data used for incident diagnoses analyses were moved back by one week. ²**Percent change:** These reflect the percentage increase or decrease of new diagnoses between the 14 days preceding the past 7 days and the 14 days preceding that. Changes in ZIP codes with less than 10 cases in both 2 week intervals are not reported**Data cleaning (either during case interviews or address geo-coding) may lead to reassignment of few cases from one territory to another based on their corrected addresses. These may appear as “decreases” when compared to the previous day’s count. These do not reflect errors in the data collection or analysis process but only reflect the minor day-to-day fluctuations in case counts that arise in an evolving public health database like COVID’s. **Note:** Sharp increases in territorial COVID case counts often reflect new cases diagnosed at long term care facilities located in those territories during facility-wide /mass screening events **All data reported are preliminary and subject to change.**

COVID-19 IN LONG-TERM CARE FACILITIES IN FULTON COUNTY

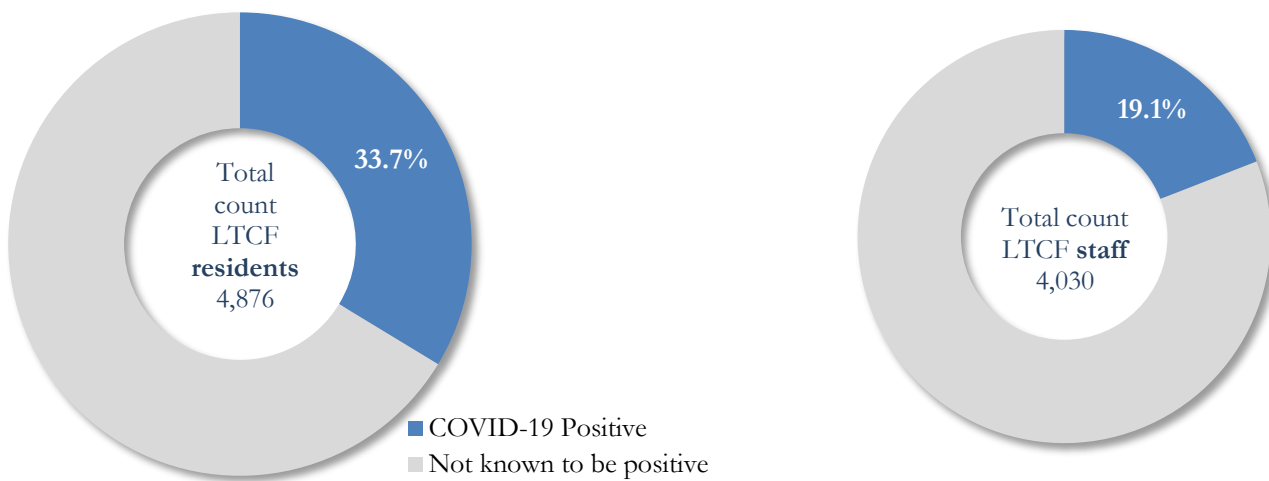
Older persons (aged 65 years and older) and persons who live in nursing homes or other long-term care facilities seem to be at higher risk for developing more serious complications from COVID-19. Extra precautions are recommended for individuals within this risk groups – Centers for Disease Control and Prevention (CDC 2020) <https://www.cdc.gov/coronavirus/2019-ncov/need-extra-precautions/people-at-higher-risk.html>

Fig. 27. COVID-19 Diagnoses and Deaths in Fulton County Associated with Long-Term Care Facilities



COVID-19 POSITIVITY:

Fig. 28. COVID-19 Positivity at 64 reporting Long-Term Care Facilities (LTCF) in Fulton County



COVID-19 Cases, Hospitalizations, and Deaths among 64 reporting Long-Term Care Facilities in Fulton County

	LTCF Residents (n=4,876)			LTCF Staff (n=4,030)		
	Cases	Hospitalizations	Deaths	Cases	Hospitalizations	Deaths
Average (count per fac.) ¹	26	5	4	12	1	<0.1
Median (count per fac.) ¹	11	2	1	9	0	0
Lowest counts	0	0	0	0	0	0
Highest counts	139	48	30	70	8	2
Total Count	1644 (33.7%) ^a	332 (20.2%) ^b	246 (15.0%) ^b	769 (19.1%) ^a	33 (4.3%) ^b	5 (<1.0%) ^b

^a Percentage shown reflects proportion of total residents/staff tested who were positive (i.e. COVID-19 Positivity). | ^b Percentages shown are proportions of persons residents/staff diagnosed with COVID-19 who were hospitalized or died after diagnoses.