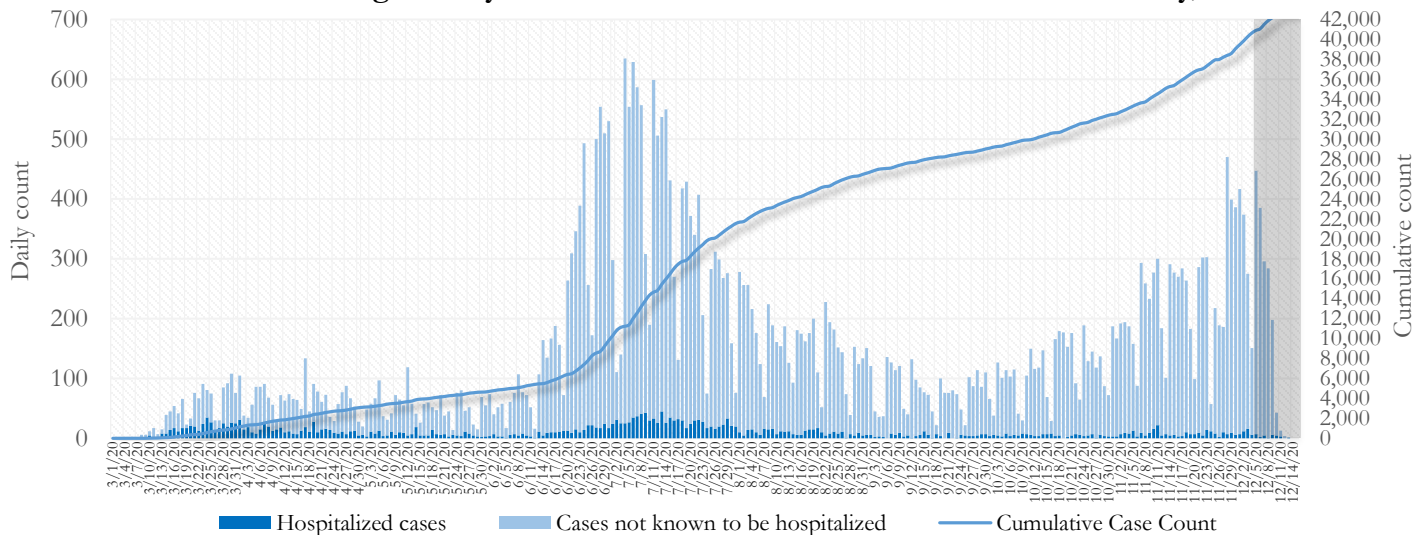


## SUMMARY

- As of December 15, 2020, Fulton County has recorded **42,737 cases of the 2019 novel coronavirus (COVID-19)** and **707 confirmed COVID-19 deaths**. 93 deaths are currently being reviewed by GA DPH to confirm cause of death.
- Of the **4,546 new cases** between November 25 and December 8, the central portion of the county (Atlanta) accounted for 39% while the northern and southern parts accounted for 40% and 16% respectively.
- By city, new COVID-19 case rates range from 228.7 per 100,000 persons (Palmetto) to 529.6 per 100,000 persons (Union City). [**Fulton County Diagnoses Rates (per 100,000 persons): Cumulative – 3888.1; Incidence –413.6**]. See map showing incidence case rate by ZIP code on Pg.17.
- Among all persons diagnosed with COVID-19 in Fulton County since July 1, **5.4% required hospitalization and 1.1% died**.
- Of all testing done in Fulton County between November 23 and Dec 6, the **percent positivity rate was 7.7%**.

**Fig 1. Daily and Cumulative COVID-19 cases in Fulton County, GA**



\*Counts shown reflect the number of confirmed cases as of 9:00 pm on 12/14/20 using the date of first positive sample collection. Where date of sample collection was not available or missing, the date of report creation in GA SENDSS was used instead. **Note:** Delays in data reporting may cause changes in data counts, particularly in the shaded portion. Data throughout this report are preliminary and subject to ongoing data cleaning processes, and thus are subject to change. This report includes data on confirmed PCR tests only. For data on antigen testing, see the [GA DPH County Indicator Reports here](#).

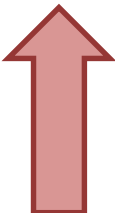
## DISTRIBUTION OF COVID-19 CASES BY REGION

**New cases:** 39% of the new COVID-19 cases in the past 2 weeks occurred in Atlanta while 40% and 16% occurred in the Northern and Southern regions of the county respectively.

Fulton Region	% Cumulative count	% New cases*
Atlanta	43.7%	39.0%
North <sup>1</sup>	31.0%	39.8%
South <sup>2</sup>	19.6%	16.4%
Unincorporated/Unknown	5.7%	4.8%

<sup>1</sup>Includes all Fulton County cities north of Atlanta (Alpharetta, Johns Creek, Milton, Mountain Park, Roswell, Sandy Springs) | <sup>2</sup>Includes all cities south of Atlanta (Chattahoochee Hills, College Park, East Point, Fairburn, Hapeville, Palmetto, South Fulton, and Union City) \***New cases:** Cases diagnosed in the past 2 weeks only (between 11/25/20 – 12/8/20).

**In the recent two week reporting period (11/25-12/8), there were more new cases of COVID-19 in Fulton County than the previous two weeks (11/11-11/24).**



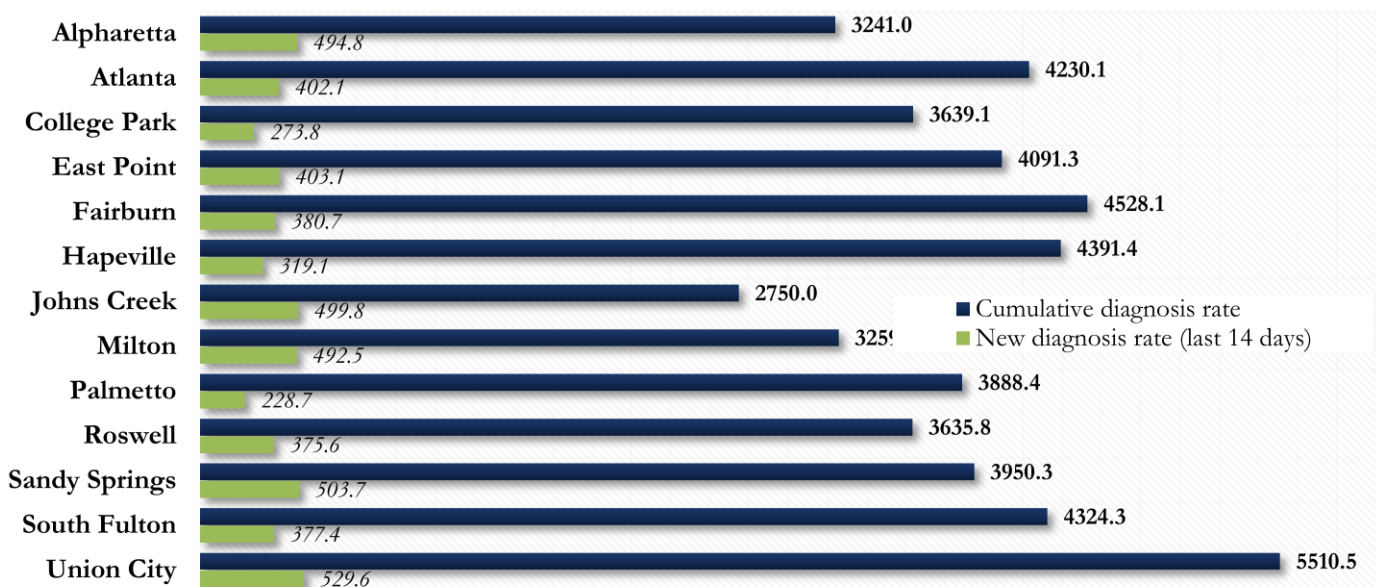
\*Delayed a week to account for testing results turnaround time.

## COVID-19 CASE COUNTS AND RATES BY CITY

	Prior (12/11/20)	Current Total (12/15/20)			New Cases (Period: 11/11/20 – 12/8/20) <sup>1</sup>			
	Count	Count	%	Cum. Rate <sup>2</sup>	Recent 14 d. (11/25–12/8)	Prior 14 d. (11/11–11/24)	% change <sup>3</sup>	Rate <sup>4</sup> (Last 14 d).
Alpharetta	1989	2096	4.9%	3241.0	320	205	↑ 56.1%	494.8
Atlanta	18095	18662	43.7%	4230.1	1774	1459	↑ 21.6%	402.1
Chattahoochee Hills <sup>a</sup>	50	56	0.1%	1953.3	<10	<10	-	279.0
College Park	495	505	1.2%	3639.1	38	33	↑ 15.2%	273.8
East Point	1394	1431	3.3%	4091.3	141	105	↑ 34.3%	403.1
Fairburn	646	666	1.6%	4528.1	56	55	↑ 1.8%	380.7
Hapeville	284	289	0.7%	4391.4	21	22	↓ 4.5%	319.1
Johns Creek	2199	2300	5.4%	2750.0	418	209	↑ 100.0%	499.8
Milton	1195	1244	2.9%	3259.0	188	104	↑ 80.8%	492.5
Mountain Park	10	10	0.0%	1600.0	0	0	-	-
Palmetto	163	170	0.4%	3888.4	10	10	-	228.7
Roswell	3318	3427	8.0%	3635.8	354	285	↑ 24.2%	375.6
Sandy Springs	4036	4164	9.7%	3950.3	531	367	↑ 44.7%	503.7
South Fulton	3974	4113	9.6%	4324.3	359	256	↑ 40.2%	377.4
Union City	1101	1155	2.7%	5510.5	111	74	↑ 50.0%	529.6
Unknown	3837	2449	5.7%	-	213	124	-	-

<sup>1</sup>**New cases:** Cases diagnosed in most recent 28 days (based on reported dates of positive sample collection). To allow for lag in reporting results of new diagnoses from samples collected in the most recent week, data used for incident diagnoses analyses were moved back by one week. <sup>2</sup>**Cumulative diagnosis rate:** Population estimates from US Census Bureau used to calculate cumulative diagnoses rate. All rates shown are per 100,000 persons. <sup>3</sup>**% change:** These reflect the percentage increase or decrease in new diagnoses between the 14 days preceding the most recent 7 days and the 14 days preceding that. <sup>4</sup>**(Incidence) Rate:** Rate of new diagnoses in the last 14 day period preceding the immediate past week. **\*\*Data cleaning** (either during case interviews or address geo-coding) may lead to reassignment of few cases from one territory to another based on their corrected addresses. These may appear as “decreases” when compared to the previous day’s count. These do not reflect errors in the data collection or analysis process but only reflect the minor day-to-day fluctuations in case counts that arise in an evolving public health database like COVID’s. <sup>a</sup>There was a previous error in which cases were not correctly geocoding to Chattahoochee Hills, though they were included in the total cumulative counts. The numbers shown today reflect the accurate count for Chattahoochee Hills. **Note: All data reported are preliminary and subject to change.**

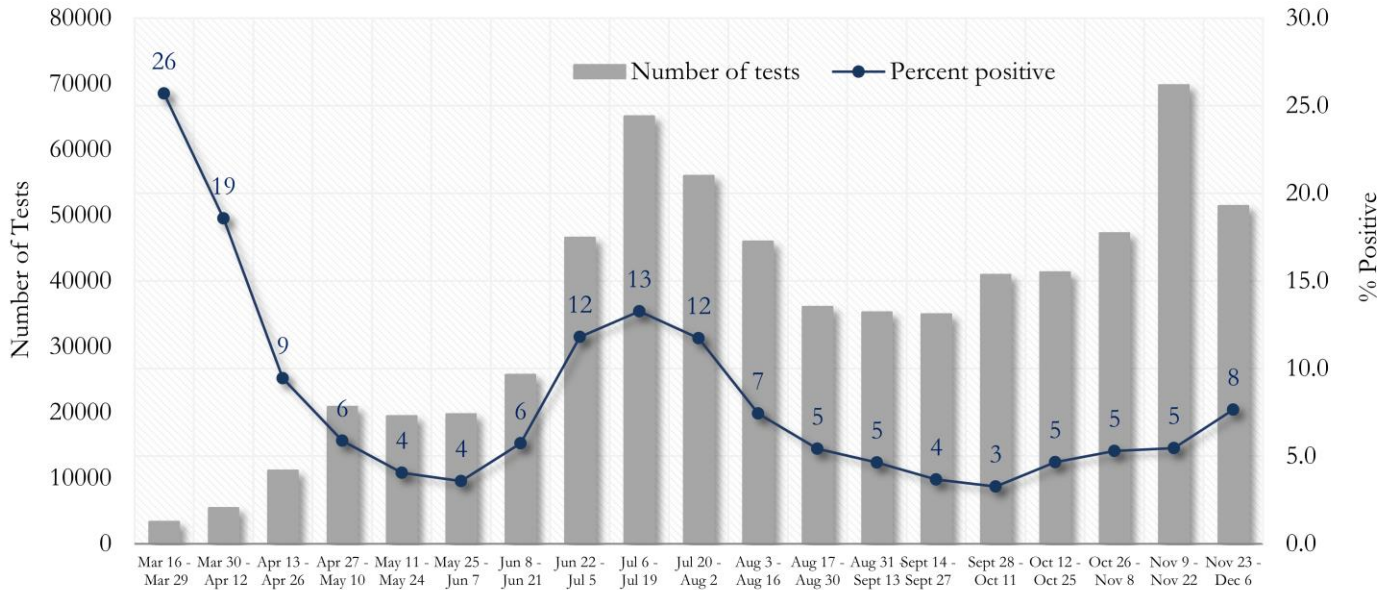
Fig. 2. Incident &amp; Cumulative Diagnoses Rates for COVID-19 by City



\*Rates shown are per 100,000 persons | **Note:** Mass testing in specific locations (e.g. long term care facilities) may cause sharp increases in the cumulative rate of COVID-19 diagnosis in those territories. All data shown are preliminary and are subject to change as testing results get updated.

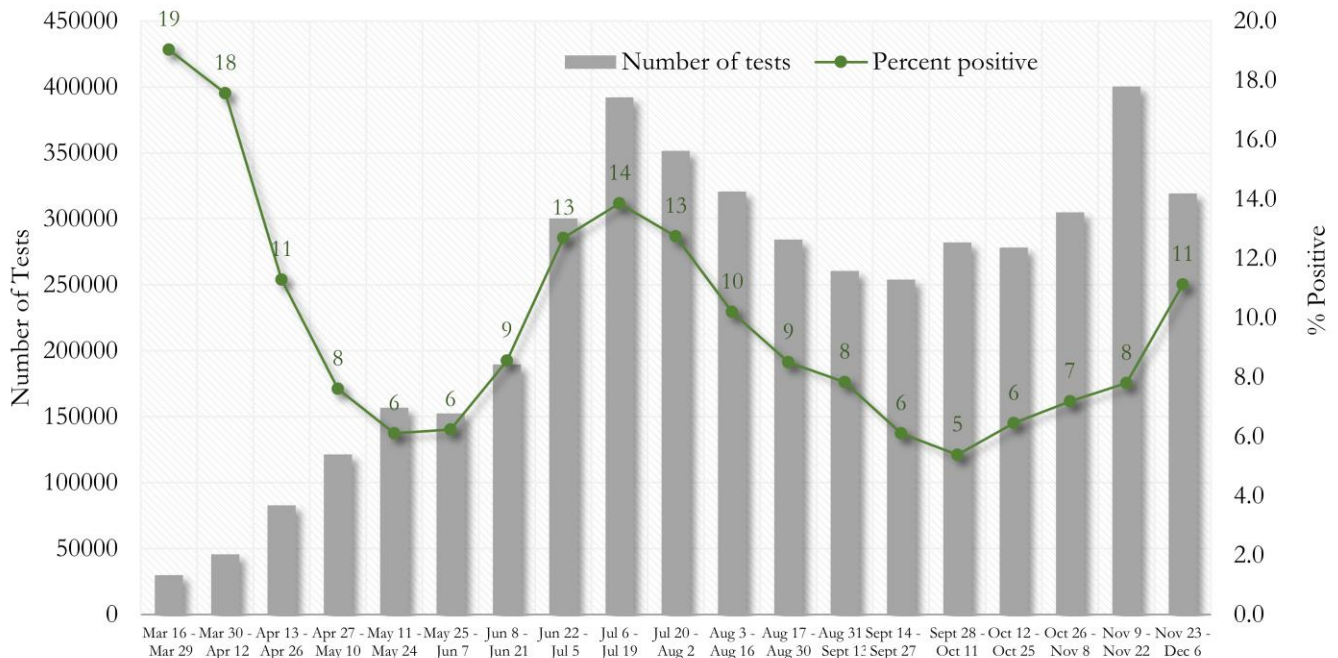
## COVID-19 TESTING AND POSITIVITY IN FULTON COUNTY AND GEORGIA

**Fig. 3. Trends in Positive COVID-19 Tests in Fulton County by 14-day Periods**



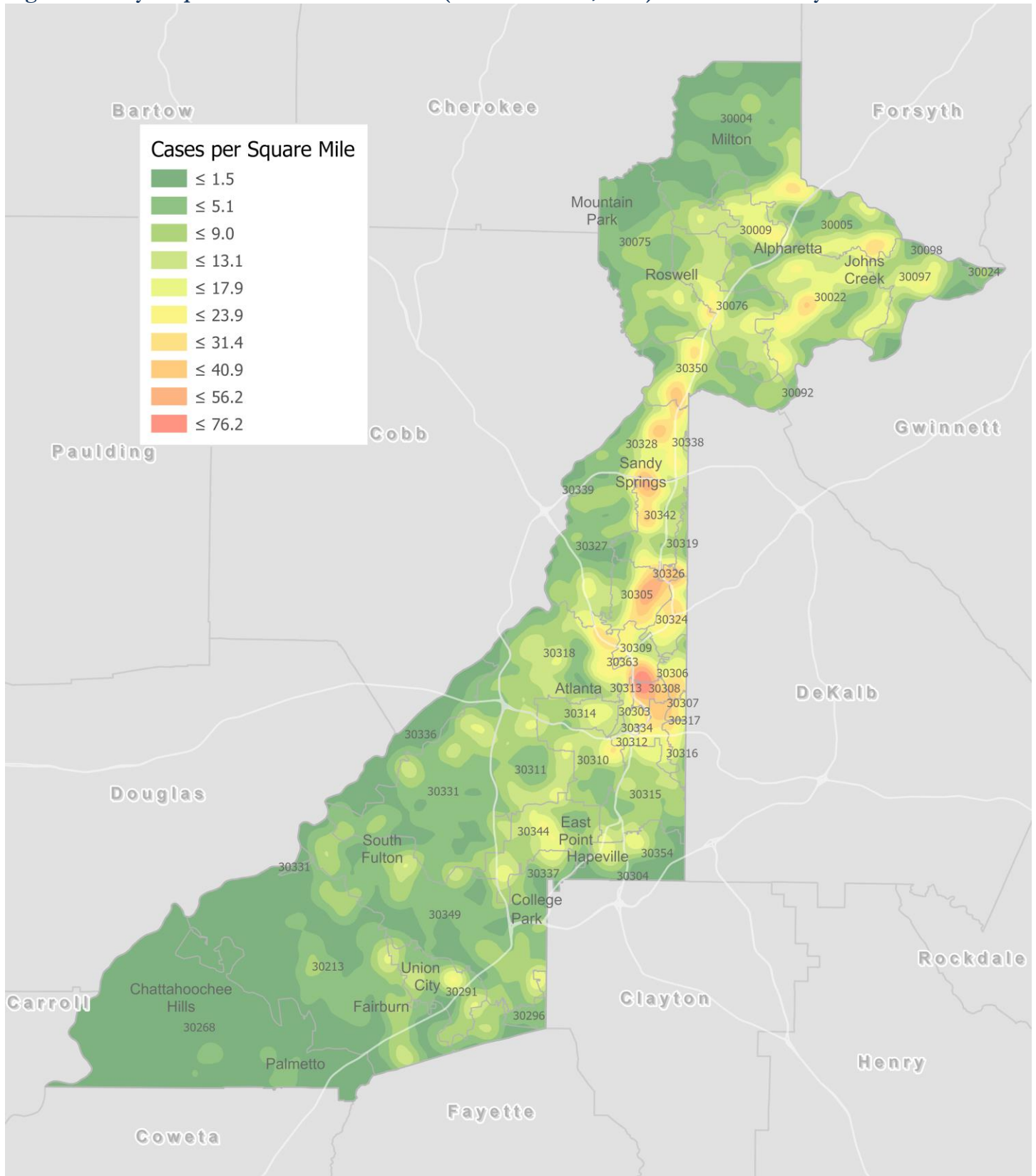
\*Data on Polymerase Chain Reaction (PCR) tests only included. This rate is subject to change as more test results are reported.

**Fig. 4. Trends in Positive COVID-19 Tests in Georgia by 14-day Periods**



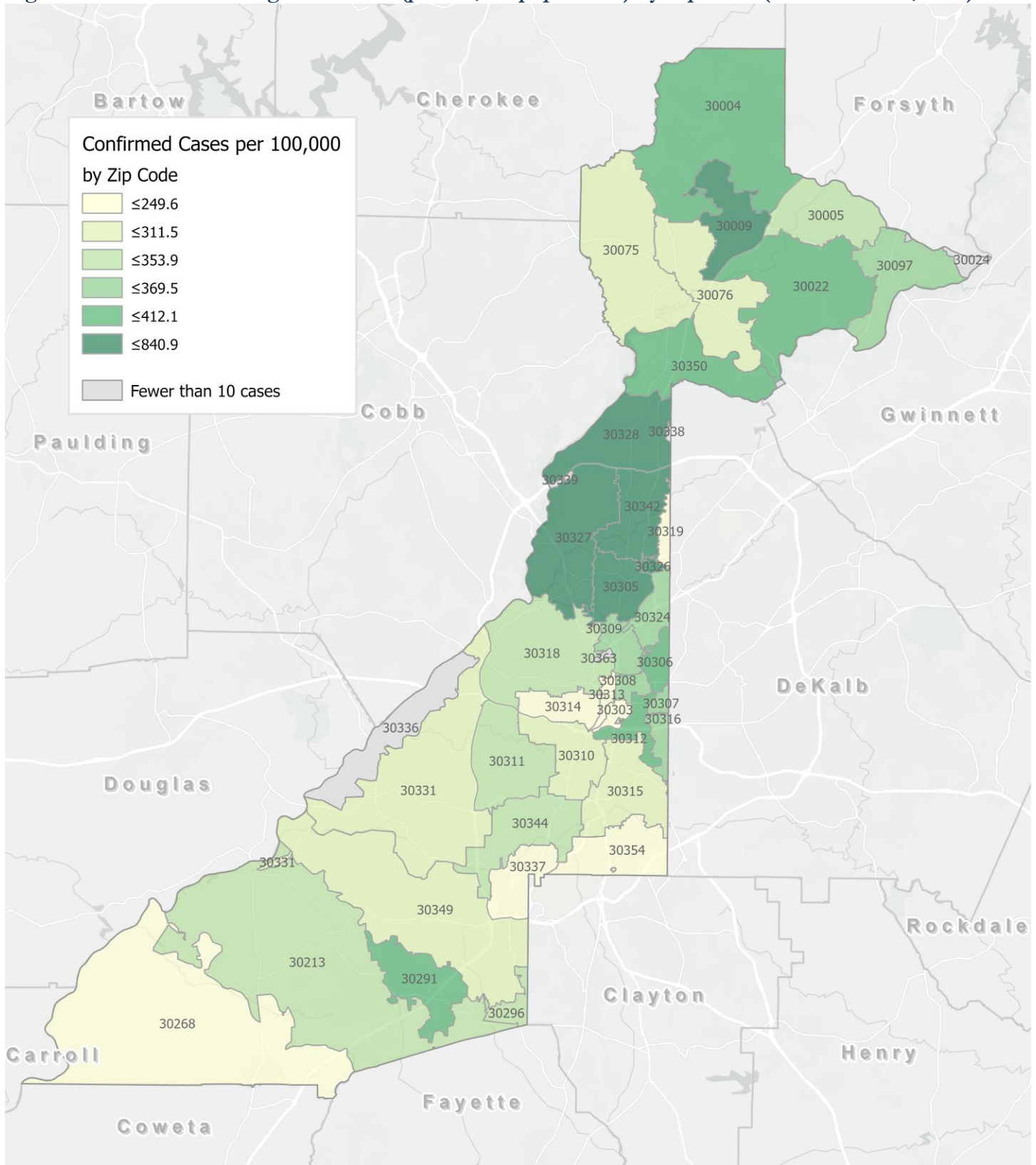
\*Data on Polymerase Chain Reaction (PCR) tests only included. This rate is subject to change as more test results are reported.

Fig. 5. Density Map – New COVID-19 Cases (Nov 25– Dec 8, 2020) in Fulton County



**New COVID-19 cases:** Cases diagnosed in most recent 14 days (based on reported dates of positive sample collection). To allow for lag in reporting results of positive cases from samples collected in the immediate past 7 days, data used for incident diagnoses analyses are moved back by one week. Map reflects new COVID-19 cases diagnosed between Nov 25<sup>th</sup> and Dec 8<sup>th</sup>, 2020 across Fulton County, excluding LTCF cases.

Fig. 6. New COVID-19 Diagnoses Rates (per 100,000 population) by Zip Code (Nov 25– Dec 8, 2020)



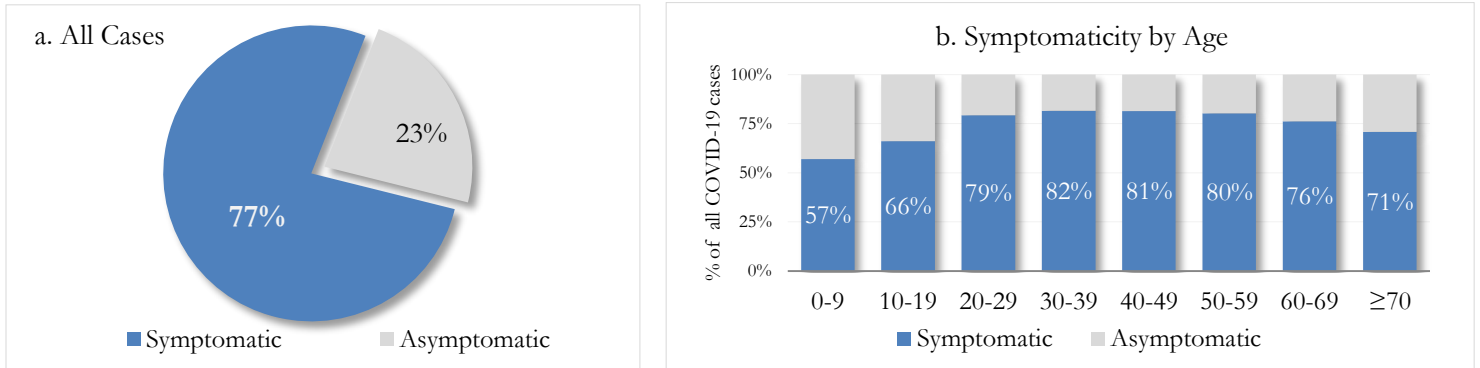
\*Rates shown are per 100,000 populations.

**New COVID-19 cases:** Cases diagnosed in most recent 14 days (based on reported dates of positive sample collection). To allow for lag in reporting results of positive cases from samples collected in the immediate past 7 days, data used for incident diagnoses analyses are moved back by one week. Data used excludes outbreak-related cases at long-term care facilities and map shown reflects only the new non-LTCF cases diagnosed between the dates shown in map title. See page 17 for zip code break down table.

## REPORTING SYMPTOMS AMONG PERSONS WITH COVID-19 IN FULTON

People with COVID-19 have reported a wide range of symptoms ranging from mild symptoms to severe illness. Symptoms may appear 2-14 days after exposure to the virus. Symptoms reported include: cough, shortness of breath/difficulty breathing, fever, chills, muscle pain, headache, sore throat, congestion, nausea or vomiting, diarrhea, or new loss of taste or smell – Centers for Disease Control and Prevention (CDC)  
<https://www.cdc.gov/coronavirus/2019-ncov/symptoms-testing/symptoms.html>

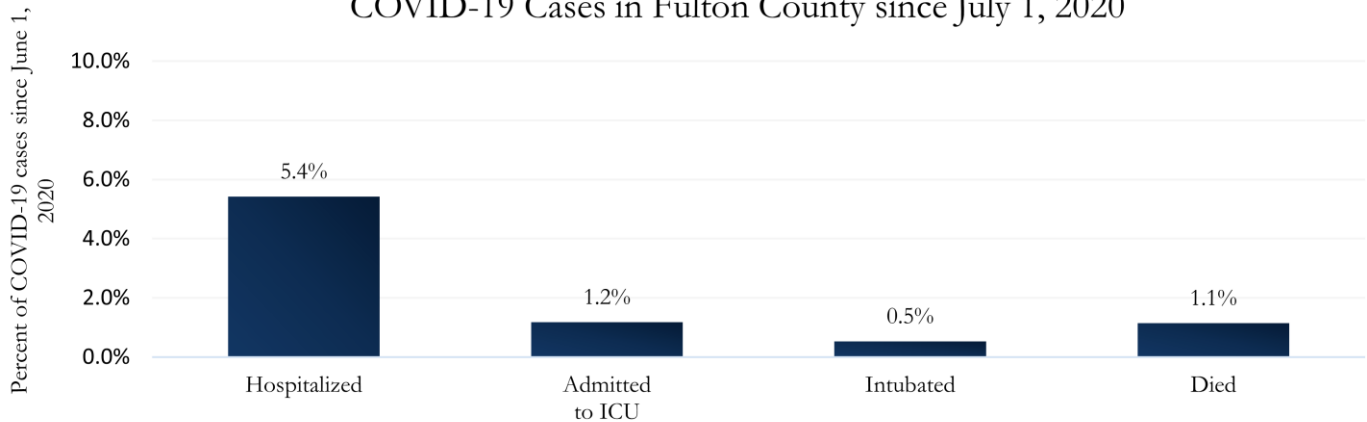
Fig. 7a & b. Total Proportion Reporting Symptoms in Fulton County



\*\*\*COVID-19 cases who have been case interviewed or had medical charts reviewed as of 12/14/20 only. n = 28,302\*\*\*

## COVID-19 HOSPITALIZATIONS, ICU ADMISSIONS AND DEATHS IN FULTON

Fig. 8. Hospitalizations, ICU Admissions, Intubations, and Deaths among COVID-19 Cases in Fulton County since July 1, 2020



## DEMOGRAPHIC DISTRIBUTIONS – COVID-19 CASES AND DEATHS

### A. Distribution of COVID-19 cases by gender, age, and race in Fulton County by Fulton Region

	North Fulton Cities <sup>1</sup> Count (%)	Atlanta Count (%)	South Fulton Cities <sup>2</sup> Count (%)	Unknown City Count (%)	All Fulton Count (%)
<b>Total COVID-19 cases</b>	<b>13241</b>	<b>18662</b>	<b>8385</b>	<b>2449</b>	<b>42737</b>
<b>Gender:</b> Female	6824 (52%)	9343 (50%)	4800 (57%)	1215 (50%)	22182 (52%)
Male	6305 (48%)	9083 (49%)	3522 (42%)	1164 (48%)	20074 (47%)
Unknown*	112 (1%)	236 (1%)	63 (1%)	70 (3%)	481 (1%)
<b>Age:</b> 0-9	456 (3%)	383 (2%)	285 (3%)	65 (3%)	1189 (3%)
10-19	1836 (14%)	1370 (7%)	643 (8%)	165 (7%)	4014 (9%)
20-29	2820 (21%)	5542 (30%)	1565 (19%)	631 (26%)	10558 (25%)
30-39	2041 (15%)	4164 (22%)	1722 (21%)	519 (21%)	8446 (20%)
40-49	2108 (16%)	2464 (13%)	1537 (18%)	379 (15%)	6488 (15%)
50-59	2032 (15%)	2007 (11%)	1178 (14%)	316 (13%)	5533 (13%)
60-69	1049 (8%)	1299 (7%)	781 (9%)	189 (8%)	3318 (8%)
≥70	892 (7%)	1379 (7%)	664 (8%)	174 (7%)	3109 (7%)
Unknown*	<10	54 (0%)	10 (0%)	11 (0%)	82 (0%)
<b>Race:</b> Asian, NH	644 (5%)	369 (2%)	39 (0%)	55 (2%)	1107 (3%)
Black, NH	1509 (11%)	8127 (44%)	6076 (72%)	861 (35%)	16573 (39%)
White, NH	6004 (45%)	5399 (29%)	464 (6%)	610 (25%)	12477 (29%)
Hispanic	2301 (17%)	1212 (6%)	695 (8%)	237 (10%)	4445 (10%)
Other, NH	567 (4%)	661 (4%)	196 (2%)	87 (4%)	1511 (4%)
Unknown*	2216 (17%)	2894 (16%)	915 (11%)	599 (24%)	6624 (15%)

\*Unknown includes cases not yet interviewed.

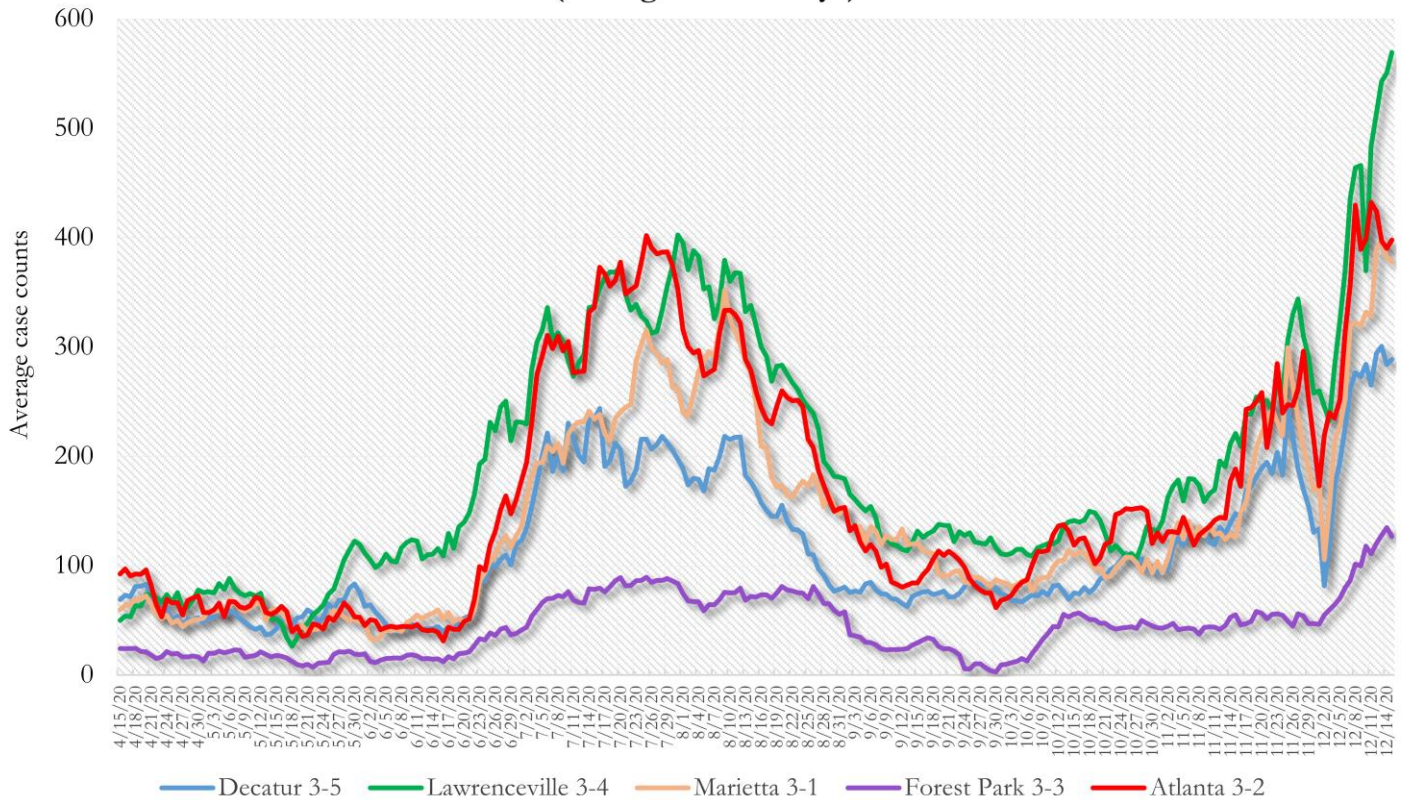
### B. Distribution of COVID-19 deaths by gender, age, and race in Fulton County by Fulton Region

	North Fulton Cities <sup>1</sup> Count (%)	Atlanta Count (%)	South Fulton Cities <sup>2</sup> Count (%)	Unknown City Count (%)	All Fulton Count (%)
<b>Total COVID-19 deaths</b>	<b>154</b>	<b>340</b>	<b>187</b>	<b>26</b>	<b>707</b>
<b>Gender:</b> Female	73 (47%)	155 (46%)	93 (50%)	12 (46%)	333 (47%)
Male	81 (53%)	185 (54%)	94 (50%)	14 (54%)	374 (53%)
Unknown	0	0	0	0	0
<b>Age:</b> ≤ 29	<10	<10	<10	0	<10
30-39	<10	<10	<10	<10	14 (2%)
40-49	<10	<10	11 (6%)	<10	28 (4%)
50-59	<10	30 (9%)	22 (12%)	<10	63 (9%)
60-69	19 (12%)	66 (19%)	42 (22%)	<10	129 (18%)
≥70	120 (78%)	224 (66%)	107 (57%)	17 (65%)	468 (66%)
Unknown	0	0	0	0	0
<b>Race:</b> Asian, NH	<10	<10	<10	<10	12 (2%)
Black, NH	28 (18%)	275 (81%)	152 (81%)	10 (38%)	465 (66%)
White, NH	107 (69%)	52 (15%)	25 (13%)	13 (50%)	197 (28%)
Hispanic	15 (10%)	<10	<10	<10	29 (4%)
Other, NH	0	<10	<10	0	<10
Unknown	0	<10	0	0	<10

<sup>1</sup>Includes all Fulton County cities north of Atlanta (Alpharetta, Johns Creek, Milton, Mountain Park, Roswell, Sandy Springs) <sup>2</sup>Includes all cities south of Atlanta (College Park, Chattahoochee Hills, East Point, Fairburn, Hapeville, Palmetto, South Fulton, Union City). **Note:** All data reported are preliminary and subject to change. This table includes data on only confirmed COVID-19 deaths and is subject to change as GA DPH completes cause of death confirmation processes.

**COVID-19 CASE TRENDS IN FULTON AND SURROUNDING DISTRICTS**

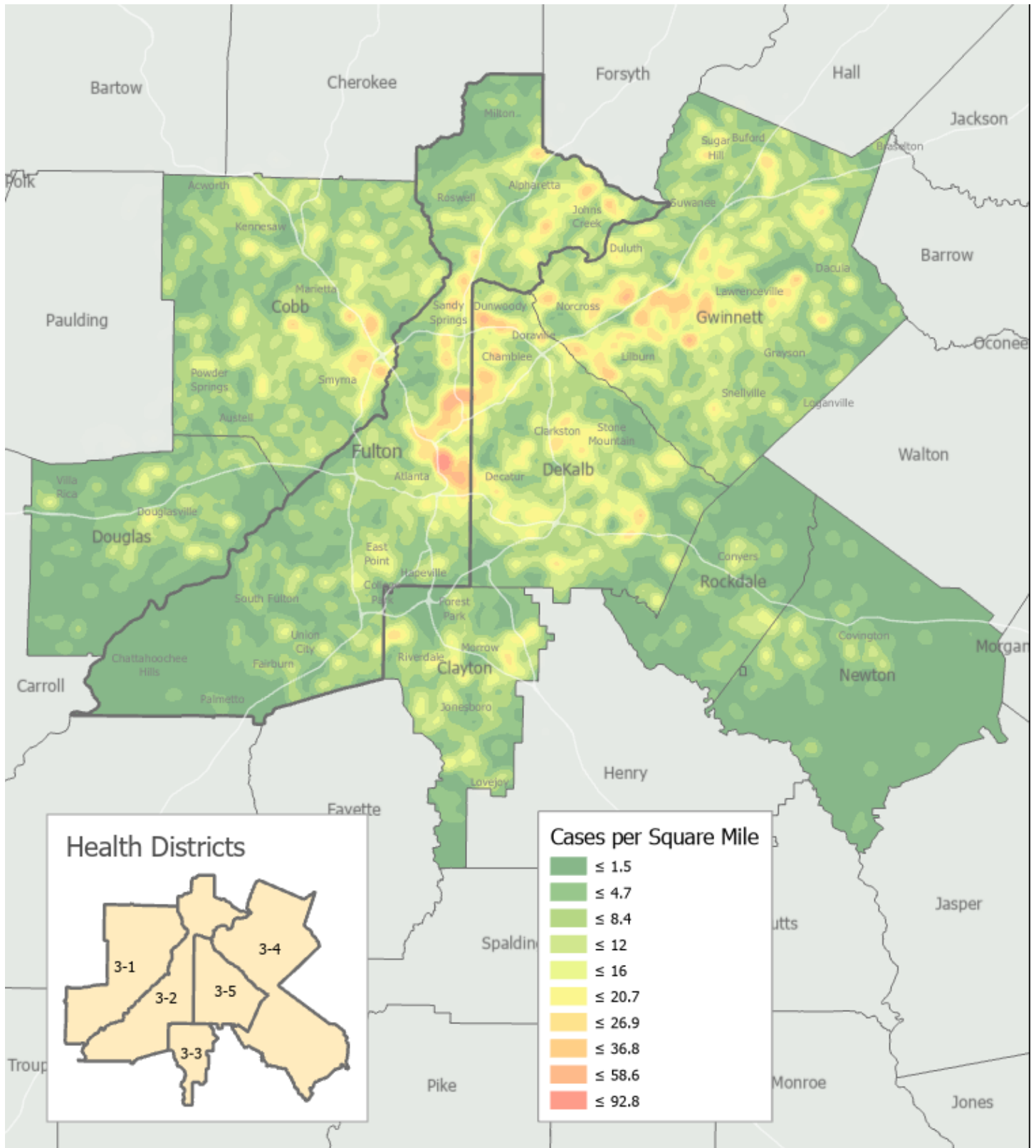
**Fig. 9. Daily Case Counts for Atlanta Metro Districts  
(Averaged over 7 days)**



\*Graph shows the average number of cases calculated from the daily cumulative case counts in the metro Atlanta districts. Increases in daily cumulative case counts may include cases diagnosed earlier during the pandemic but were only recently reported to the state as cases diagnosed belonging to these districts. Delays in data reporting may cause the trend line to appear as decreasing.

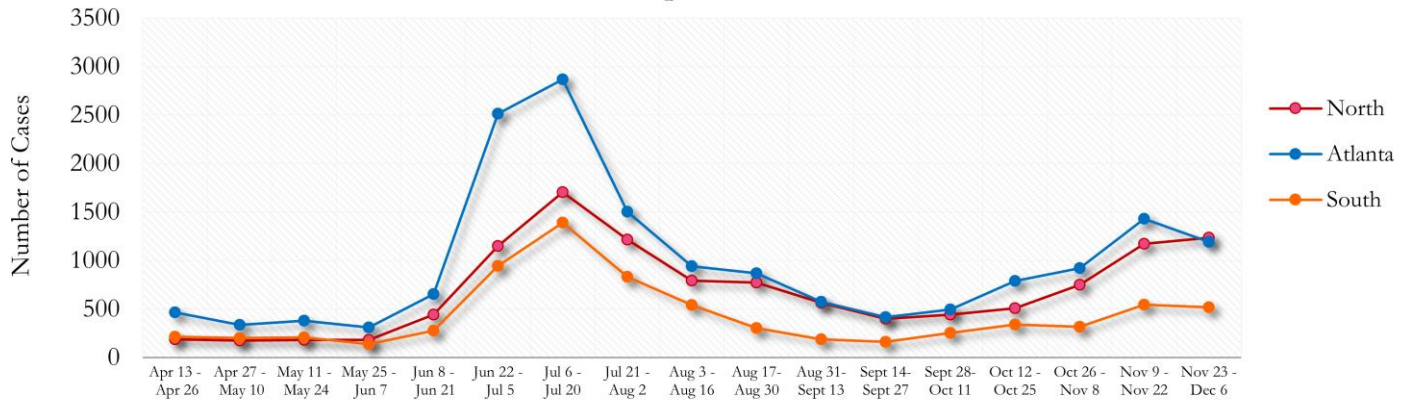


Fig. 10. COVID-19 Cases in Fulton County and Surrounding Districts (Nov 25 – Dec 8, 2020)



## TRENDS IN COVID-19 CASES AMONG DEMOGRAPHIC GROUPS (14 DAY PERIODS)

**Fig. 11. Trends in Geographic distribution of COVID-19 Cases in Fulton County by 14-day periods**

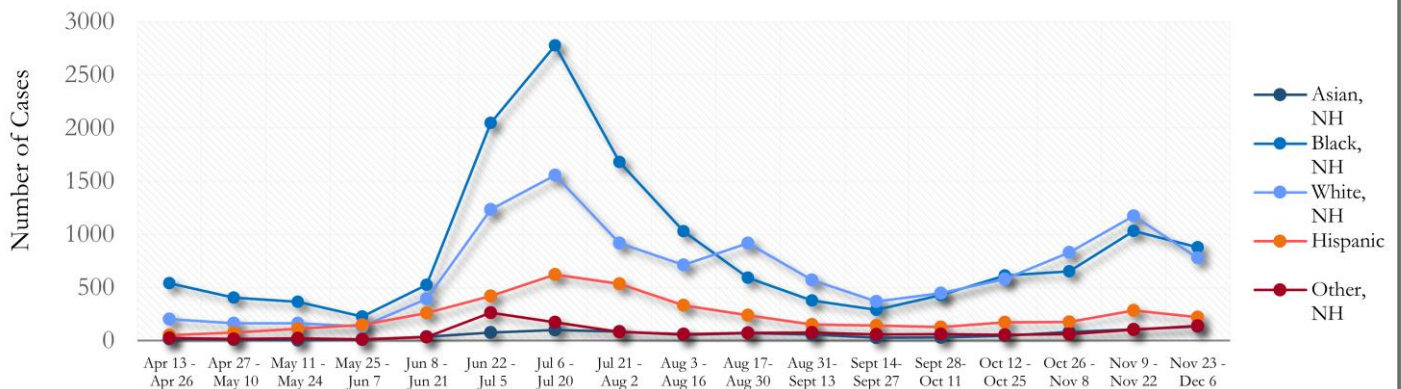


In the past two weeks, the northern region of Fulton County accounted for the majority of new cases.

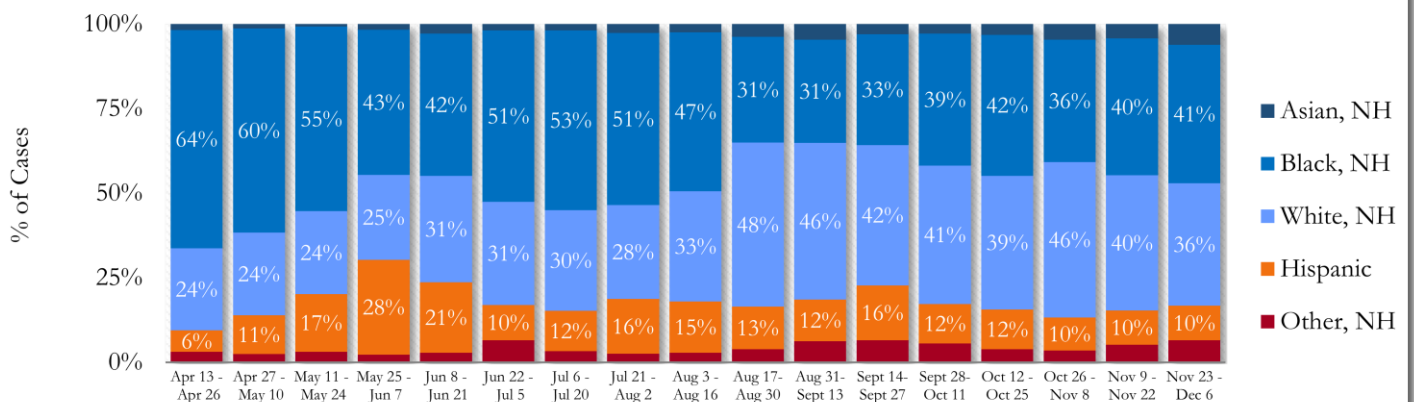
\*North - Includes all Fulton cities north of Atlanta (Alpharetta, Johns Creek, Milton, Mountain Park, Roswell, Sandy Springs)

\*South - Includes all Fulton cities south of Atlanta (College Park, Chattahoochee Hills, East Point, Fairburn, Hapeville, Palmetto, South Fulton, and Union City)

**Fig. 12. Trends in Racial Distribution of COVID-19 Cases in Fulton County by 14-day periods**

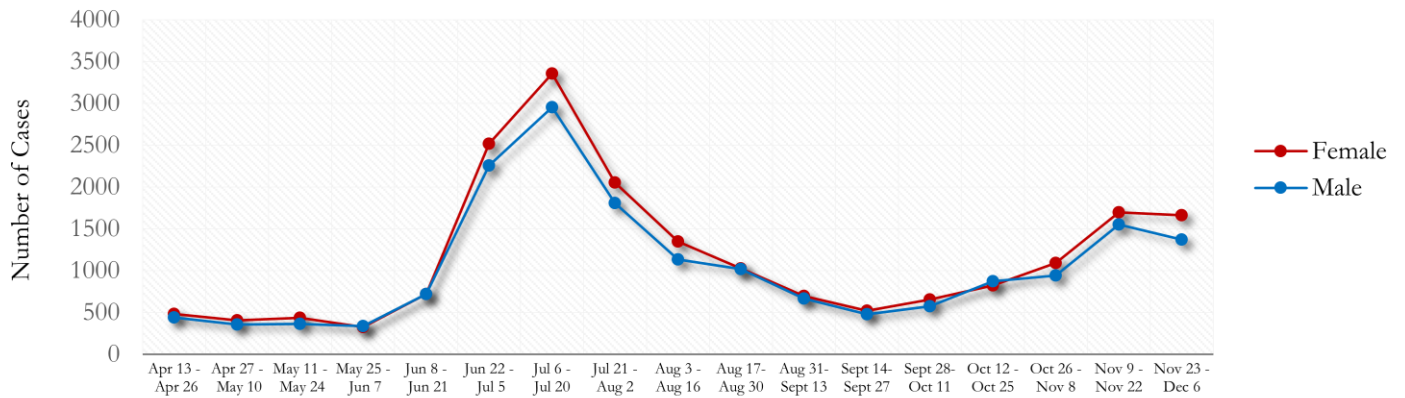


**Fig. 13. Racial Distribution of COVID-19 Cases in Fulton County by 14-day periods**

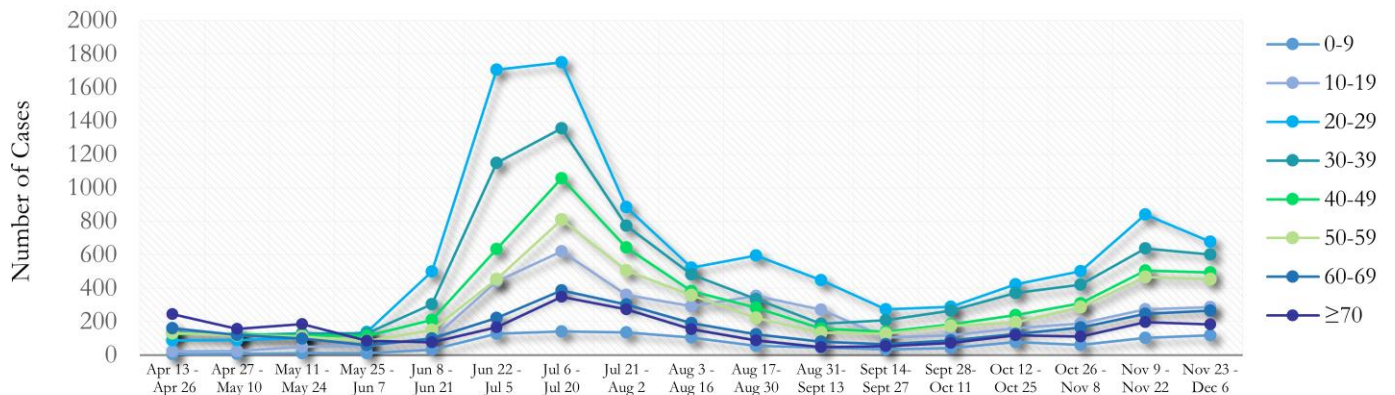


About 16% of COVID cases are missing data on patient race and ethnicity. The majority of new cases in the past two weeks were Black, NH (41%) and White, NH (36%).

**Fig. 14. Trends in Gender Distribution of COVID-19 Cases in Fulton County by 14-day periods**

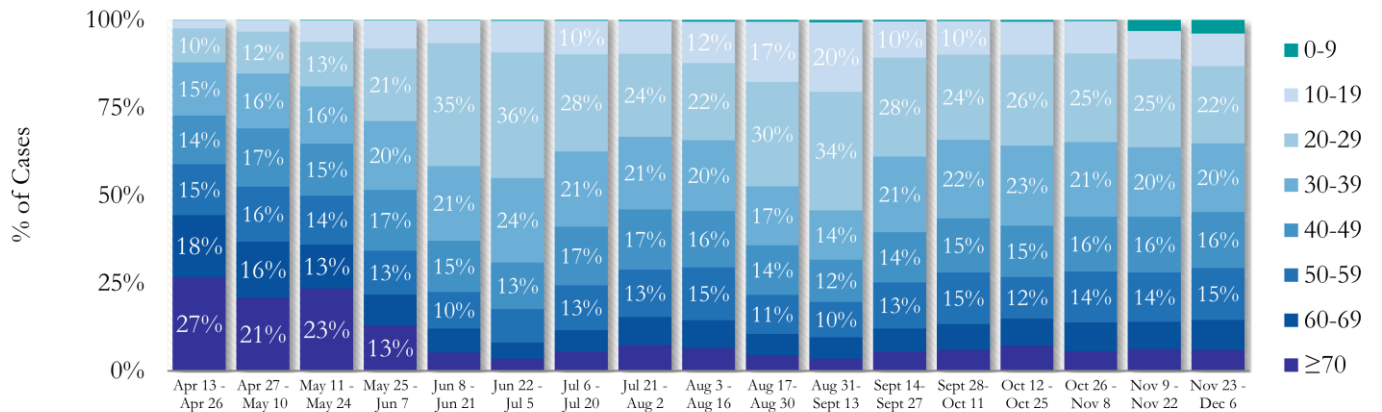


**Fig. 15. Trends in Age Distribution of COVID-19 Cases in Fulton County by 14-day periods**



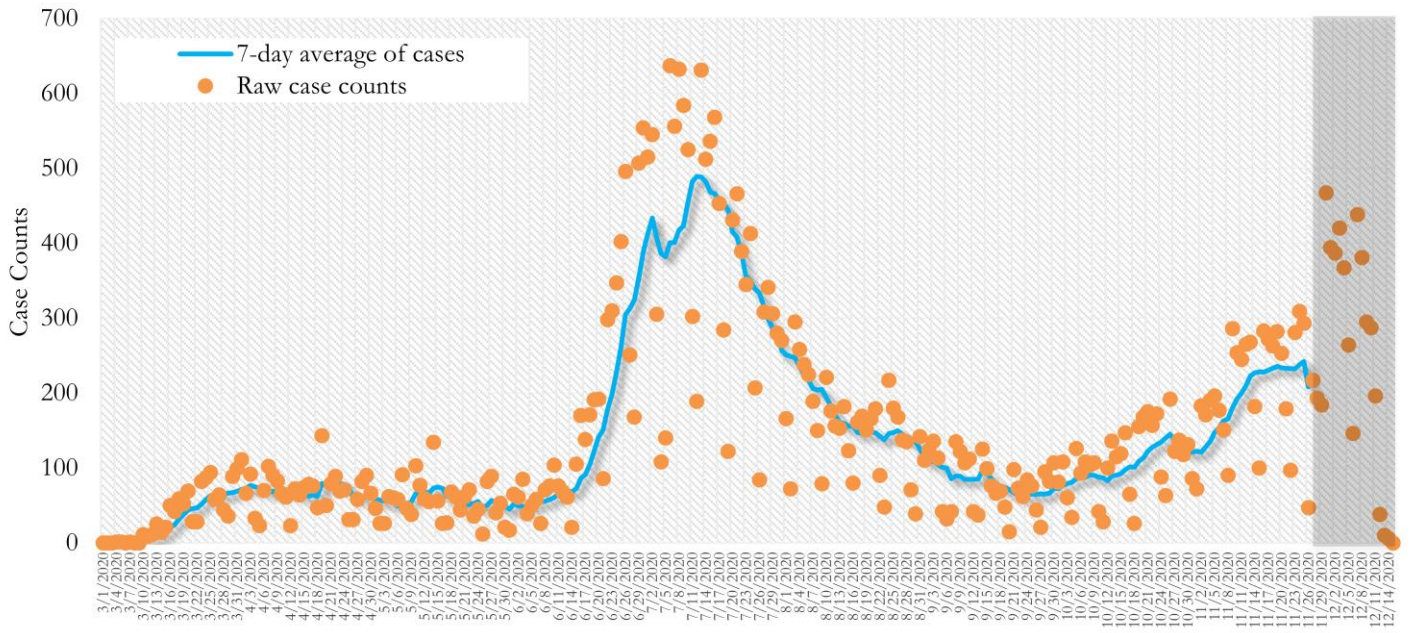
Earlier (March-May 2020) large proportions of reported cases were among persons aged 60 and older. In the most recent two weeks, 20-29 year olds accounted for the highest number of new cases among all age groups, followed by 30-39 year olds.

**Fig. 16. Age Distribution of COVID-19 Cases in Fulton County by 14-day periods**



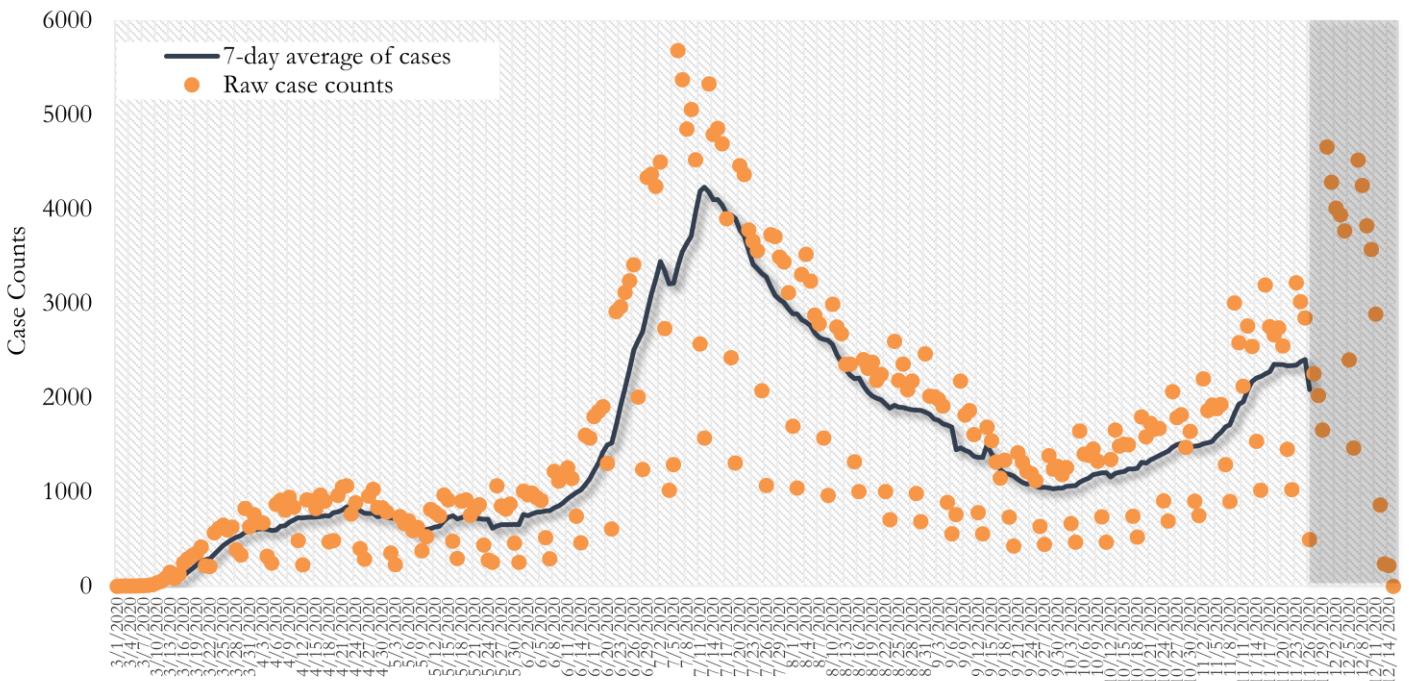
**TRENDS IN COVID-19 CASES, HOSPITALIZATIONS AND DEATHS (7-DAY MOVING AVE.)**

**Fig. 17. New COVID-19 Cases in Fulton County Daily (Averaged over 7 days)**



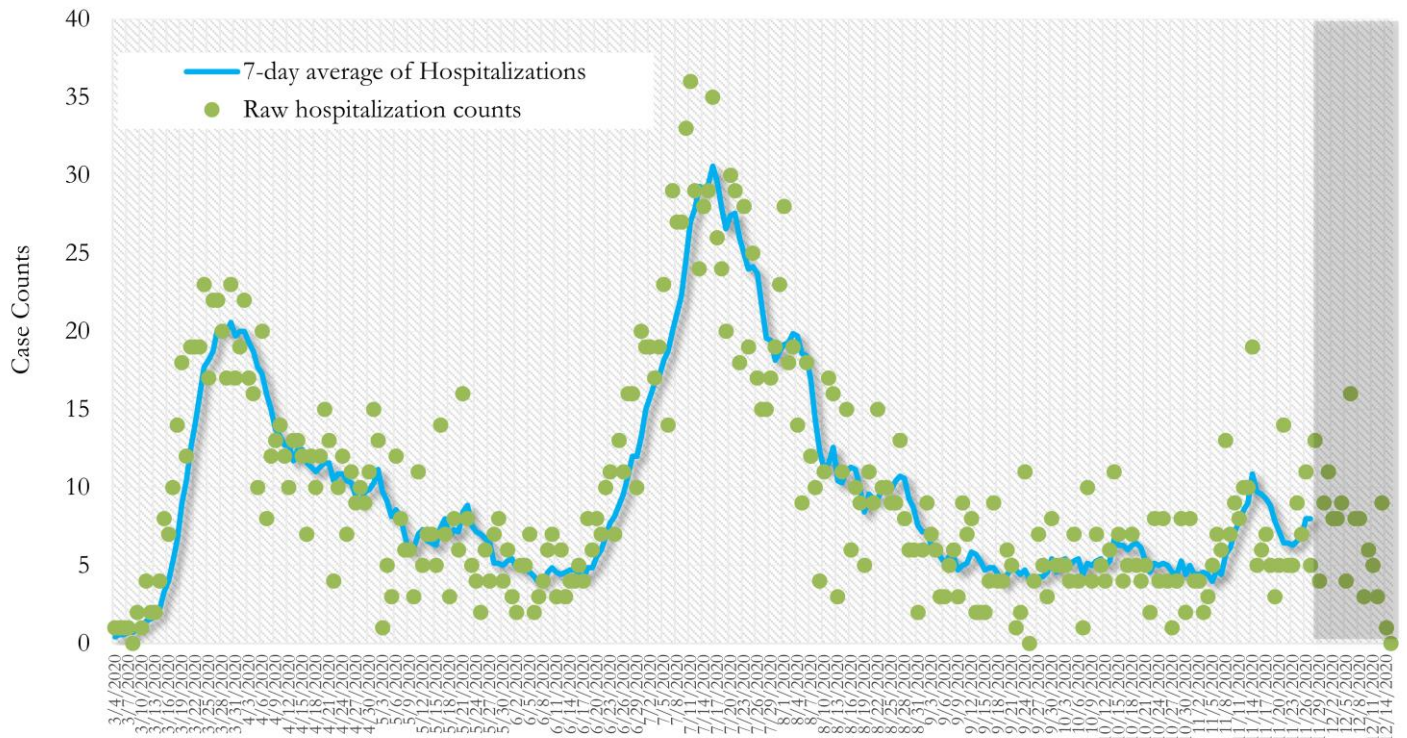
\*Date of collection of first positive sample used (report creation date used where sample collection date is missing). Graph above reflects the trend in COVID-19 diagnosis. Due to the high volume of testing in recent weeks, there have been delays in reporting lab results. Thus, the trend is subject to change as more lab results get added to the state surveillance database.

**Fig. 18. New COVID-19 Cases in Georgia State Daily (Averaged over 7 days)**



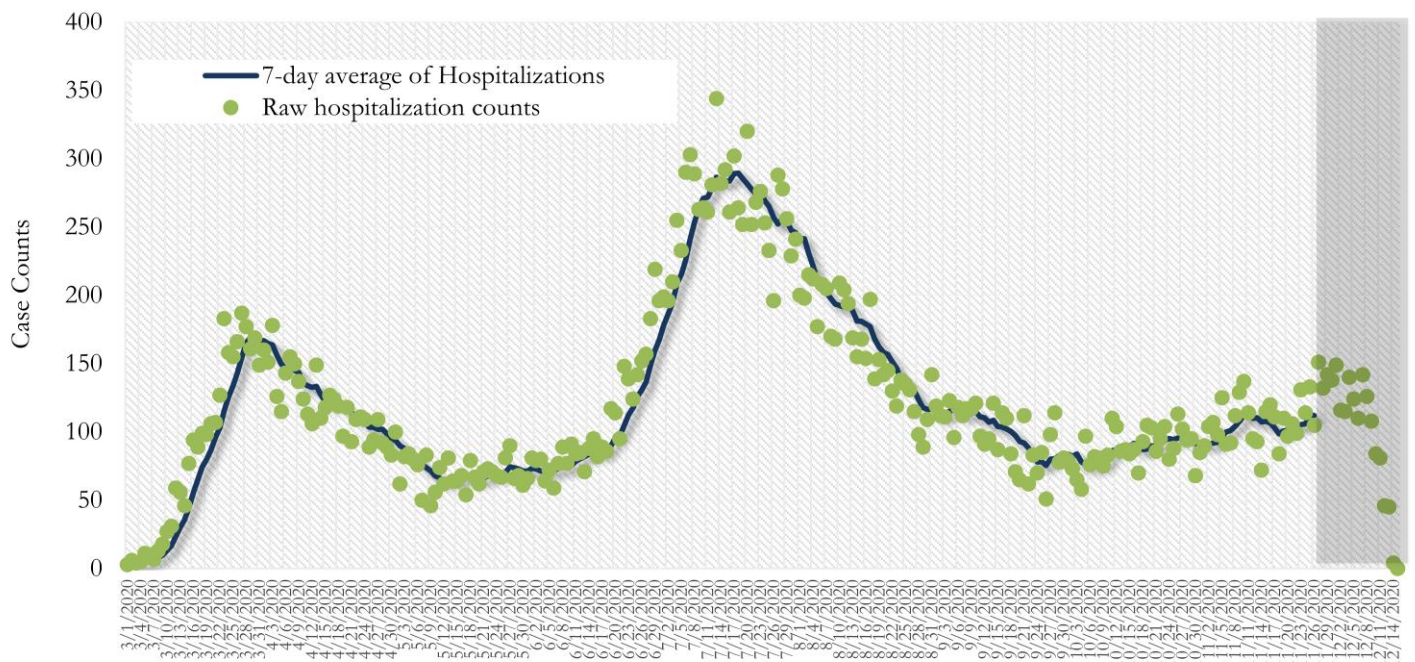
\*Date of collection of first positive sample used (report creation date used where sample collection date is missing). Graph above reflects the trend in COVID-19 diagnosis. Due to the high volume of testing in recent weeks, there have been delays in reporting lab results. Thus, the trend is subject to change as more lab results get added to the state surveillance database.

**Fig. 19. COVID-19 Hospitalizations in Fulton County Daily (Averaged over 7 days)**



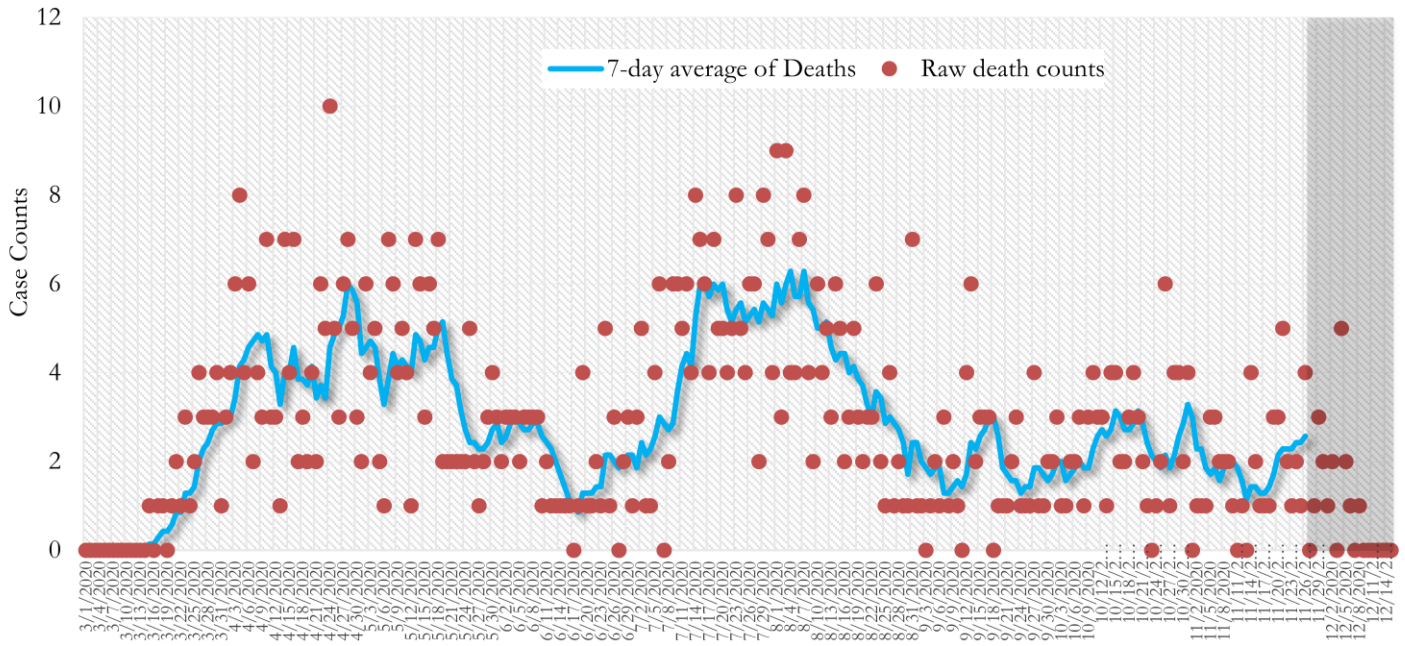
\*Reported date of hospital admission used. Graph above reflects the trend in COVID-19 hospitalizations. Due to the high volume of new cases being added daily, there have been delays in reporting hospitalization data. Thus, the trend is likely to change as more hospitalization data is reported in the state surveillance database.

**Fig. 20. COVID-19 Hospitalizations in Georgia State Daily (Averaged over 7 days)**



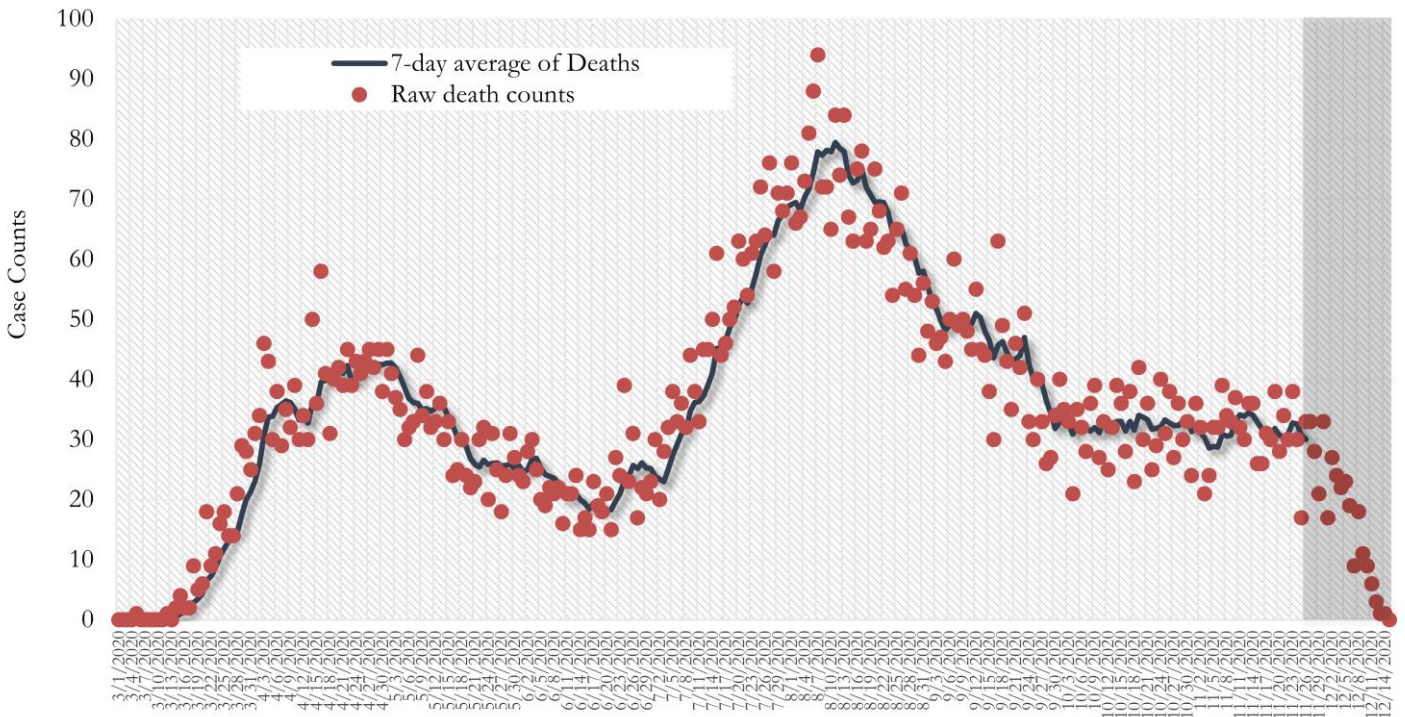
\*Reported date of hospital admission used. Graph above reflects the trend in COVID-19 hospitalizations. Due to the high volume of new cases being added daily, there have been delays in reporting hospitalization data. Thus, the trend is likely to change as more hospitalization data is reported in the state surveillance database.

**Fig. 21. COVID-19 Deaths in Fulton County Daily (Averaged over 7 days)**



\* Reported date of death used. Graph above reflects the trend in deaths attributed to COVID-19. The trend is likely to change as more data on deaths among persons with COVID-19 is reported in the state surveillance database.

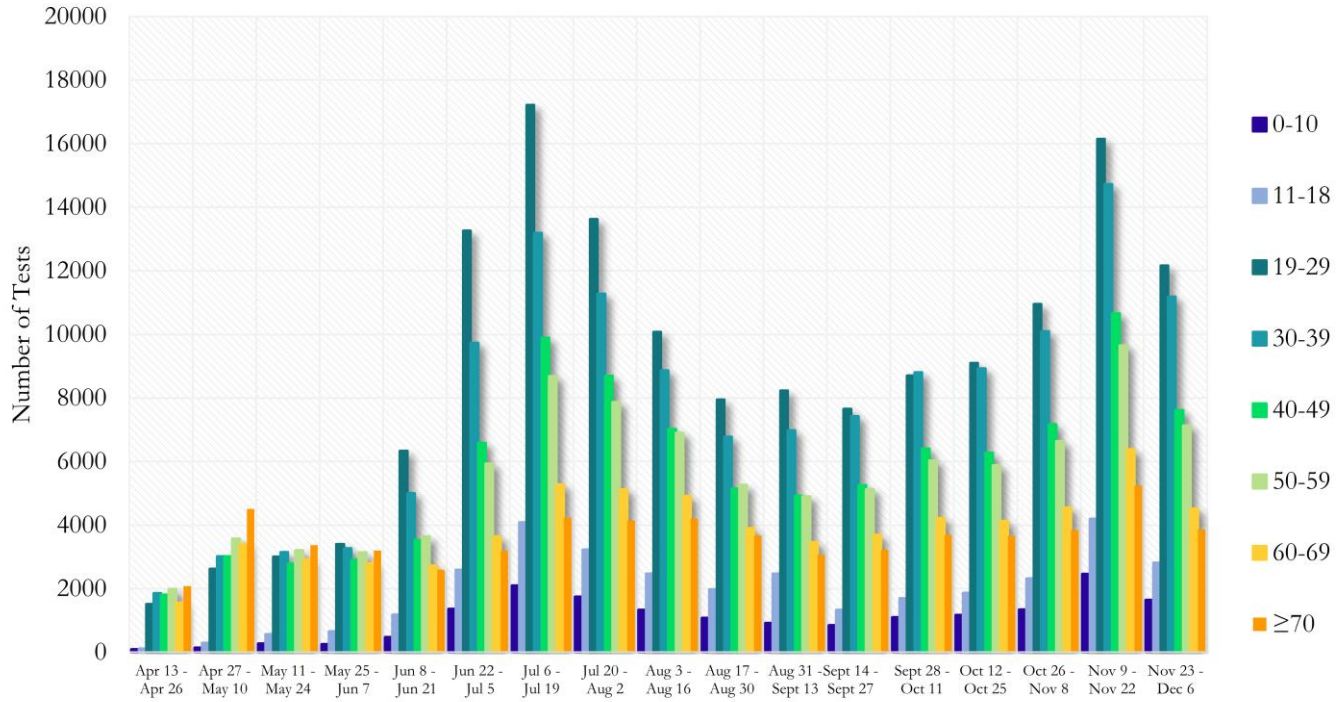
**Fig. 22. COVID-19 Deaths in Georgia State Daily (Averaged over 7 days)**



\* Reported date of death used. Graph above reflects the trend in deaths attributed to COVID-19. The trend is likely to change as more data on deaths among persons with COVID-19 is reported in the state surveillance database.

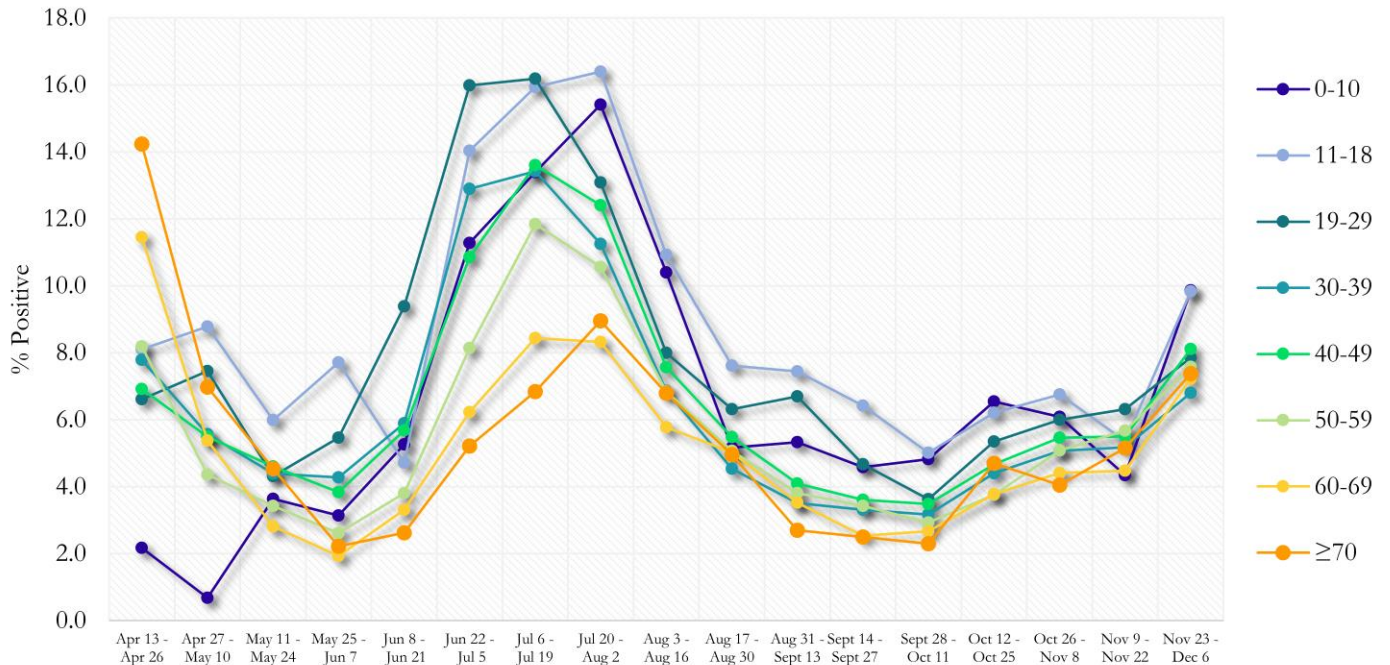
**COVID-19 TESTING AND POSITIVITY IN FULTON COUNTY BY AGE AND RACE**

**Fig. 23. COVID-19 Tests by Age in Fulton County by 14-day Periods**



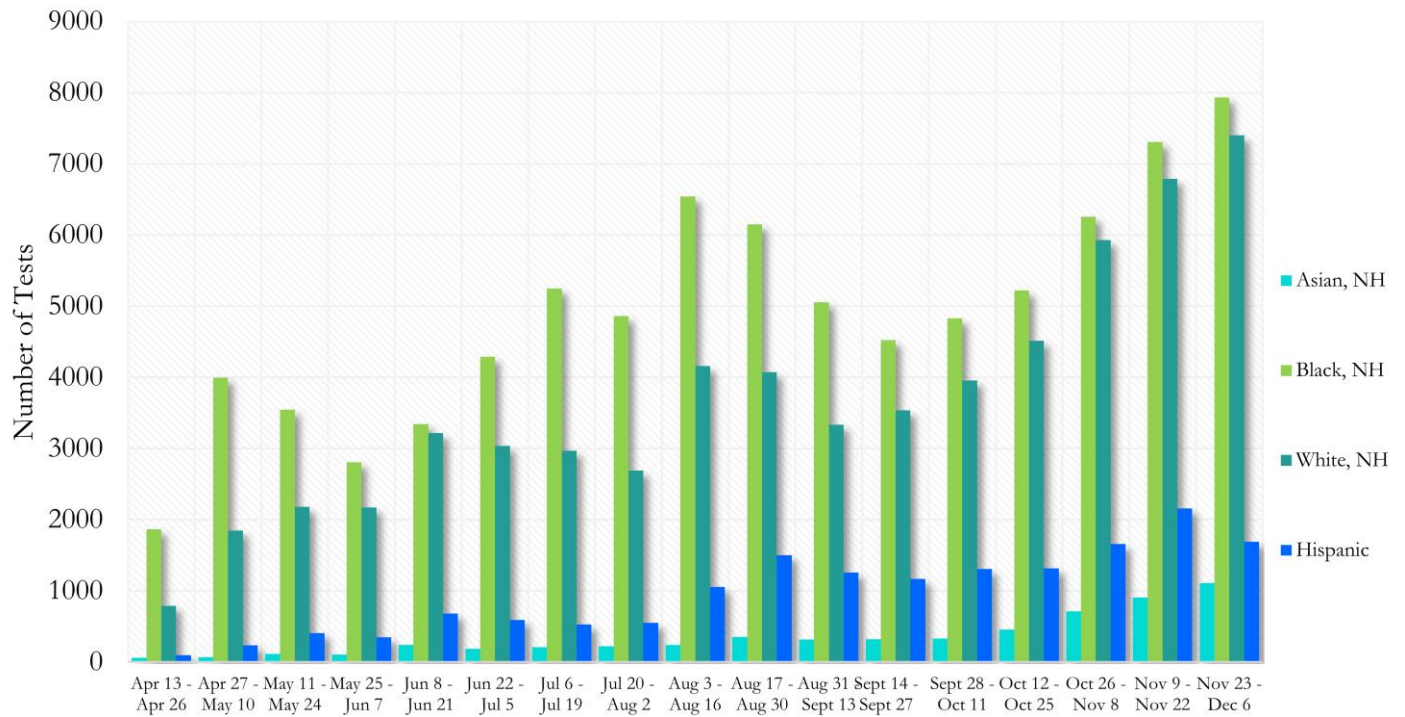
\*Data on Polymerase Chain Reaction (PCR) tests only included.

**Fig. 24. Percent Positive COVID-19 Tests by Age Group in Fulton County by 14-day Periods**



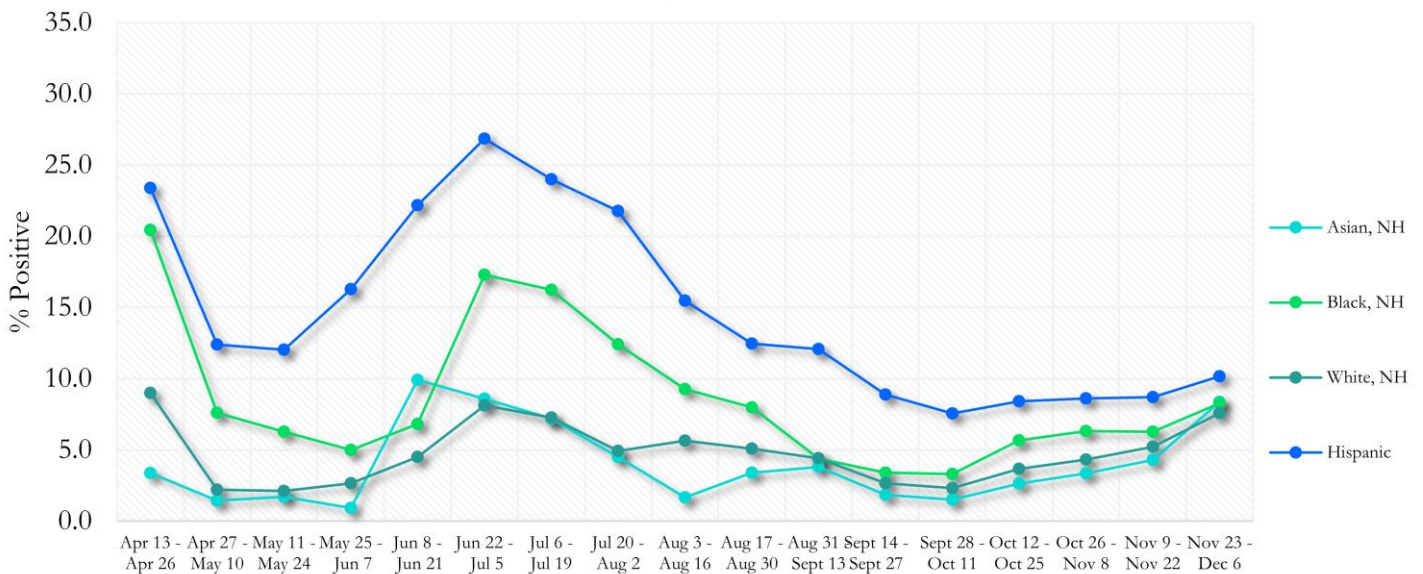
\*Data on Polymerase Chain Reaction (PCR) tests only included.

**Fig. 25. COVID-19 Tests by Race and Ethnicity in Fulton County by 14-day Periods**



\*Data on Polymerase Chain Reaction (PCR) tests only included.

**Fig. 26. Percent Positive COVID-19 Tests by Race and Ethnicity in Fulton County by 14-day Periods**



\*Data on Polymerase Chain Reaction (PCR) tests only included.



## COVID-19 CASE COUNTS BY ZIP CODE

	Prior (12/11/20)	Current Total (12/15/20)		New Cases (Period: 11/11/20 – 12/8/20) <sup>1</sup>		
	Count	Count	%	Recent 14 d. (Nov 25- Dec 8)	Prior 14 d. (Nov 11- Nov 24)	% change <sup>2</sup>
<b>All Fulton</b>	41336	42737	100%	4546	3313	↑ 37.2%
30004	1531	1602	3.7%	256	137	↑ 86.9%
30005	906	957	2.2%	191	85	↑ 124.7%
30009	725	768	1.8%	112	69	↑ 62.3%
30022	2040	2127	0.9%	331	218	↑ 51.8%
30023	10	12	<0.1%	<10	<10	-
30024	34	37	<0.1%	<10	<10	-
30075	1609	1651	3.9%	146	153	↓ 4.6%
30076	1587	1641	3.8%	181	116	↑ 56.0%
30080	<10	<10	<0.1%	0	<10	↓ 100.0%
30097	575	603	1.4%	115	50	↑ 130.0%
30098	-	-	-	0	0	-
30135	<10	<10	<0.1%	0	0	-
30138	<10	<10	<0.1%	0	0	-
30139	-	-	-	0	0	-
30213	1571	1623	3.8%	162	118	↑ 37.3%
30268	252	264	0.6%	20	14	↑ 42.9%
30291	1080	1125	2.6%	100	68	↑ 47.1%
30296	107	112	0.3%	22	14	↑ 57.1%
30301	14	15	<0.1%	<10	<10	-
30303	471	475	1.1%	22	20	↑ 10.0%
30305	1299	1340	3.1%	176	125	↑ 40.8%
30306	561	574	1.3%	68	60	↑ 13.3%
30307	280	286	0.7%	28	18	↑ 55.6%
30308	913	942	2.2%	92	86	↑ 7.0%
30309	1305	1337	3.1%	122	130	↓ 6.2%
30310	1010	1048	2.5%	86	59	↑ 45.8%
30311	1092	1131	2.6%	125	66	↑ 89.4%
30312	1193	1223	2.9%	109	105	↑ 3.8%
30313	387	400	0.9%	21	28	↓ 25.0%
30314	743	759	1.8%	63	42	↑ 50.0%
30315	1245	1315	3.1%	130	108	↑ 20.4%
30316	529	543	1.3%	52	34	↑ 52.9%
30318	2452	2524	5.9%	232	188	↑ 23.4%
30319	235	245	0.6%	34	15	↑ 126.7%
30321	12	12	<0.1%	<10	0	-
30324	1330	1353	3.2%	117	107	↑ 9.3%
30326	428	435	1.0%	46	50	↓ 8.0%
30327	960	1011	2.4%	118	94	↑ 25.5%
30328	1387	1442	3.4%	194	139	↑ 39.6%
30331	2305	2374	5.6%	183	125	↑ 46.4%
30334	13	13	<0.1%	0	0	-
30336	113	115	0.3%	11	<10	↑ 37.5%
30337	468	478	1.1%	38	28	↑ 35.7%
30338	109	112	0.3%	<10	<10	-
30339	291	299	0.7%	23	<10	↑ 283.3%
30340	35	36	<0.1%	<10	0	-
30341	37	36	<0.1%	<10	<10	-
30342	1711	1759	4.1%	174	113	↑ 54.0%
30344	1281	1320	3.1%	132	92	↑ 43.5%
30345	27	26	<0.1%	0	0	-

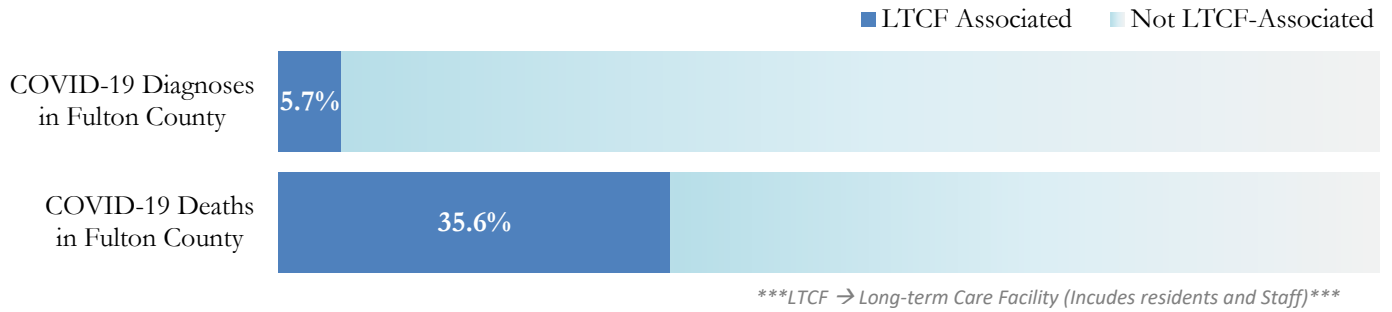
30349	2449	2539	5.9%	191	152	↑ 25.7%
30350	1070	1103	2.6%	168	124	↑ 35.5%
30354	605	619	1.4%	49	57	↓ 14.0%
30358	<10	<10	<0.1%	0	0	-
30363	110	113	0.3%	<10	17	↓ 47.1%
30374	35	36	<0.1%	0	<10	↓ 100.0%
30606	<10	<10	<0.1%	0	0	-
31131	<10	<10	<0.1%	<10	0	-
31150	<10	<10	<0.1%	0	0	-
Unknown	2184	806	1.9%	56	56	-

<sup>1</sup>**New cases:** Cases diagnosed in most recent 28 days (based on reported dates of positive sample collection). To allow for lag in reporting results of new diagnoses from samples collected in the most recent week, data used for incident diagnoses analyses were moved back by one week. <sup>2</sup>**Percent change:** These reflect the percentage increase or decrease of new diagnoses between the 14 days preceding the past 7 days and the 14 days preceding that. Changes in ZIP codes with less than 10 cases in both 2 week intervals are not reported\*\*Data cleaning (either during case interviews or address geo-coding) may lead to reassignment of few cases from one territory to another based on their corrected addresses. These may appear as “decreases” when compared to the previous day’s count. These do not reflect errors in the data collection or analysis process but only reflect the minor day-to-day fluctuations in case counts that arise in an evolving public health database like COVID’s. **Note:** Sharp increases in territorial COVID case counts often reflect new cases diagnosed at long term care facilities located in those territories during facility-wide /mass screening events **All data reported are preliminary and subject to change.**

## COVID-19 IN LONG-TERM CARE FACILITIES IN FULTON COUNTY

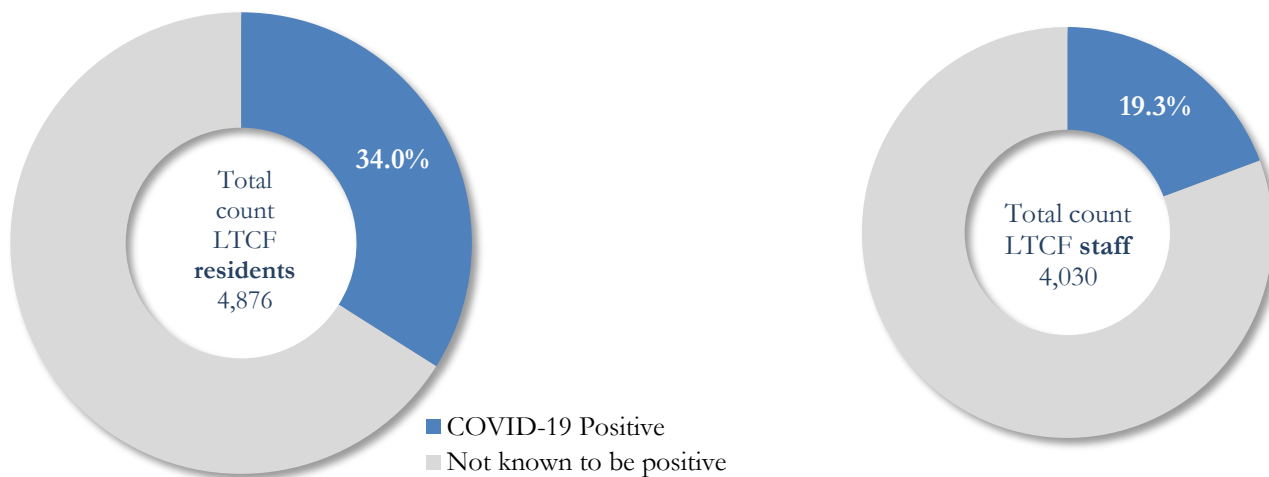
Older persons (aged 65 years and older) and persons who live in nursing homes or other long-term care facilities seem to be at higher risk for developing more serious complications from COVID-19. Extra precautions are recommended for individuals within this risk groups – Centers for Disease Control and Prevention (CDC 2020) <https://www.cdc.gov/coronavirus/2019-ncov/need-extra-precautions/people-at-higher-risk.html>

Fig. 27. COVID-19 Diagnoses and Deaths in Fulton County Associated with Long-Term Care Facilities



## COVID-19 POSITIVITY:

Fig. 28. COVID-19 Positivity at 64 reporting Long-Term Care Facilities (LTCF) in Fulton County



COVID-19 Cases, Hospitalizations, and Deaths among 64 reporting Long-Term Care Facilities in Fulton County

	LTCF Residents (n=4,876)			LTCF Staff (n=4,030)		
	Cases	Hospitalizations	Deaths	Cases	Hospitalizations	Deaths
Average (count per fac.) <sup>1</sup>	26	5	4	12	1	<0.1
Median (count per fac.) <sup>1</sup>	11	3	1	9	0	0
Lowest counts	0	0	0	0	0	0
Highest counts	139	48	30	70	8	2
Total Count	1656 (34.0%) <sup>a</sup>	336 (20.3%) <sup>b</sup>	247 (14.9%) <sup>b</sup>	778 (19.3%) <sup>a</sup>	33 (4.2%) <sup>b</sup>	5 (<1.0%) <sup>b</sup>

<sup>a</sup> Percentage shown reflects proportion of total residents/staff tested who were positive (i.e. COVID-19 Positivity). | <sup>b</sup> Percentages shown are proportions of persons residents/staff diagnosed with COVID-19 who were hospitalized or died after diagnoses.