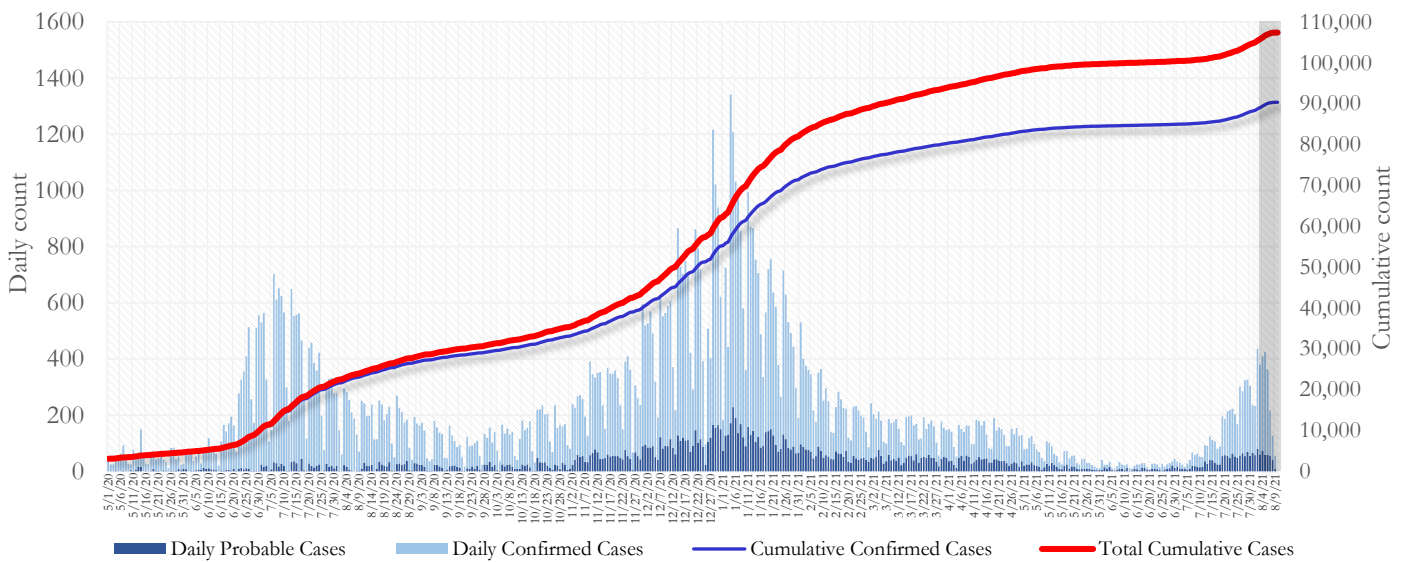


SUMMARY

- As of August 10, 2021, Fulton County has recorded **90,341 confirmed cases** and **17,053 probable cases** of COVID-19.
- Figure 1 shows both confirmed and probable case counts but the ensuing tables and figures use data from **confirmed cases only**.
- As of August 10, 2021, Fulton County has recorded **1,387 confirmed COVID-19 deaths**. 143 deaths are currently under review by GA DPH to confirm cause of death.
- By city, new confirmed COVID-19 case rates range from 160.0 per 100,000 persons (Mountain Park) to 601.0 per 100,000 persons (Union City). [**Fulton County Diagnoses Rates (per 100,000 persons): Cumulative – 8218.9; Incidence – 286.9**]. See map showing incident case rate by ZIP code on Pg.7.
- Of all PCR testing done in Fulton County between July 19 and August 1, the **percent positivity rate was 10.0%**.

Fig 1. Daily and Cumulative Confirmed and Probable COVID-19 cases in Fulton County, GA



Counts shown reflect the number of cases as of 9:00 am on 8/10/21 using the date of first positive sample collection. Where date of sample collection was not available or missing, the date of report creation in GA SendSS was used instead. The Georgia Department of Health defines a confirmed cases as someone with a positive molecular test, also known as PCR. A probable case is defined as a positive antigen test, though probable cases are still considered positive cases and individuals who tested positive through an antigen test should follow all DPH isolation and quarantine guidance. **Note:** Delays in data reporting may cause changes in data counts, particularly in the shaded portion. Data throughout this report are preliminary and subject to ongoing data cleaning processes, and thus are subject to change.

THE FOLLOWING ANALYSES (PAGES 1-19) ARE USING DATA ON CONFIRMED CASES ONLY.

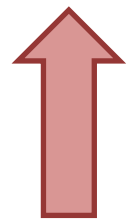
DISTRIBUTION OF COVID-19 CASES BY REGION

New cases: 45% of the new COVID-19 cases in the past 2 weeks occurred in Atlanta while 25% and 28% occurred in the Northern and Southern regions of the county respectively.

Fulton Region	% Cumulative count	% New cases*
Atlanta	43.0%	45.1%
North ¹	33.1%	24.5%
South ²	20.6%	27.5%
Unincorporated/Unknown	3.4%	3.0%

¹Includes all Fulton County cities north of Atlanta (Alpharetta, Johns Creek, Milton, Mountain Park, Roswell, Sandy Springs.) ²Includes all cities south of Atlanta (Chattahoochee Hills, College Park, East Point, Fairburn, Hapeville, Palmetto, South Fulton, and Union City) ***New cases:** Cases diagnosed in the past 2 weeks only (between 7/21/21 – 8/3/21).

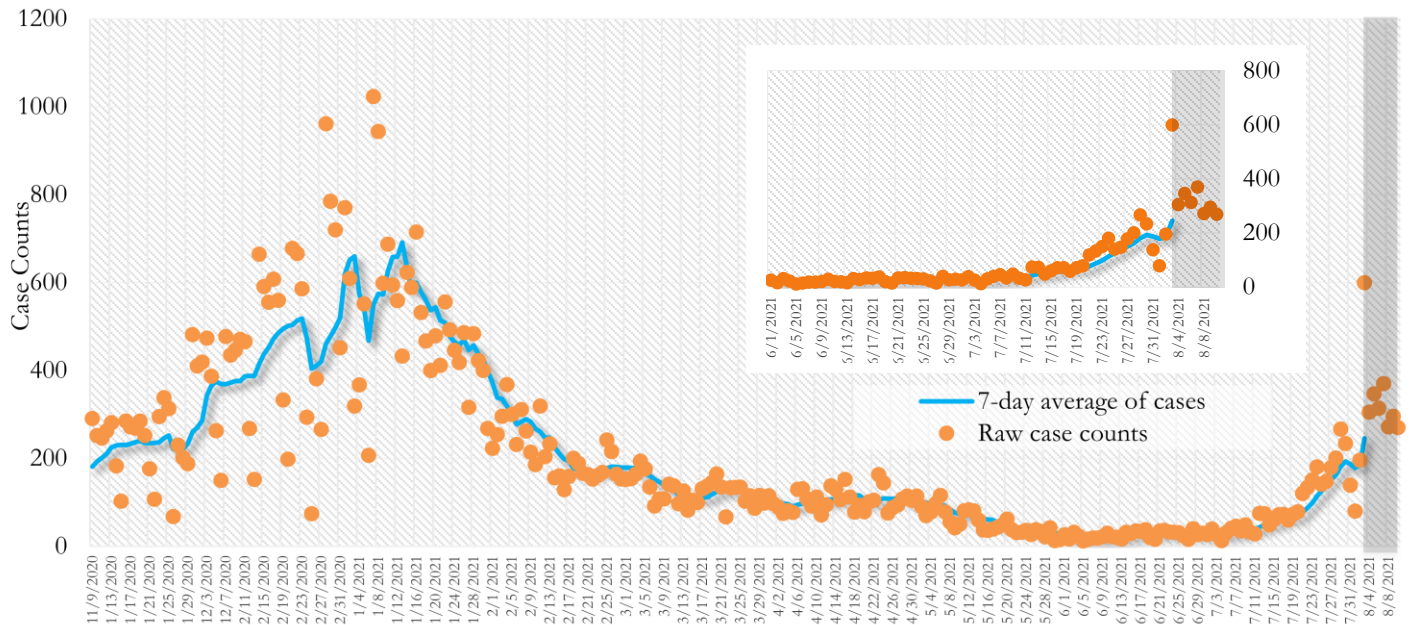
In the recent two week reporting period (7/21-8/3), there were more new cases of COVID-19 in Fulton County than the previous two weeks (7/7-7/20).



**Delayed a week to account for testing results turnaround time.*

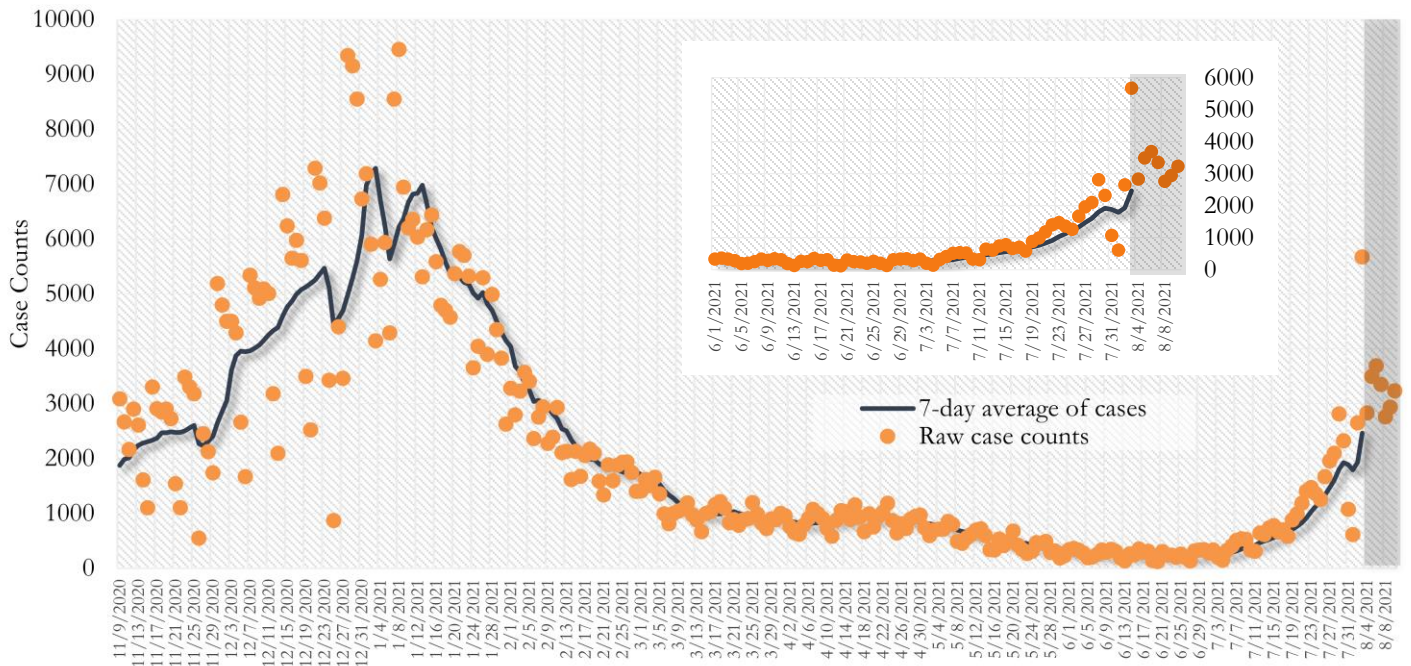
TRENDS IN COVID-19 CASES, HOSPITALIZATIONS AND DEATHS (7-DAY MOVING AVE.)

Fig. 2. New COVID-19 Cases in Fulton County Daily (Averaged over 7 days)



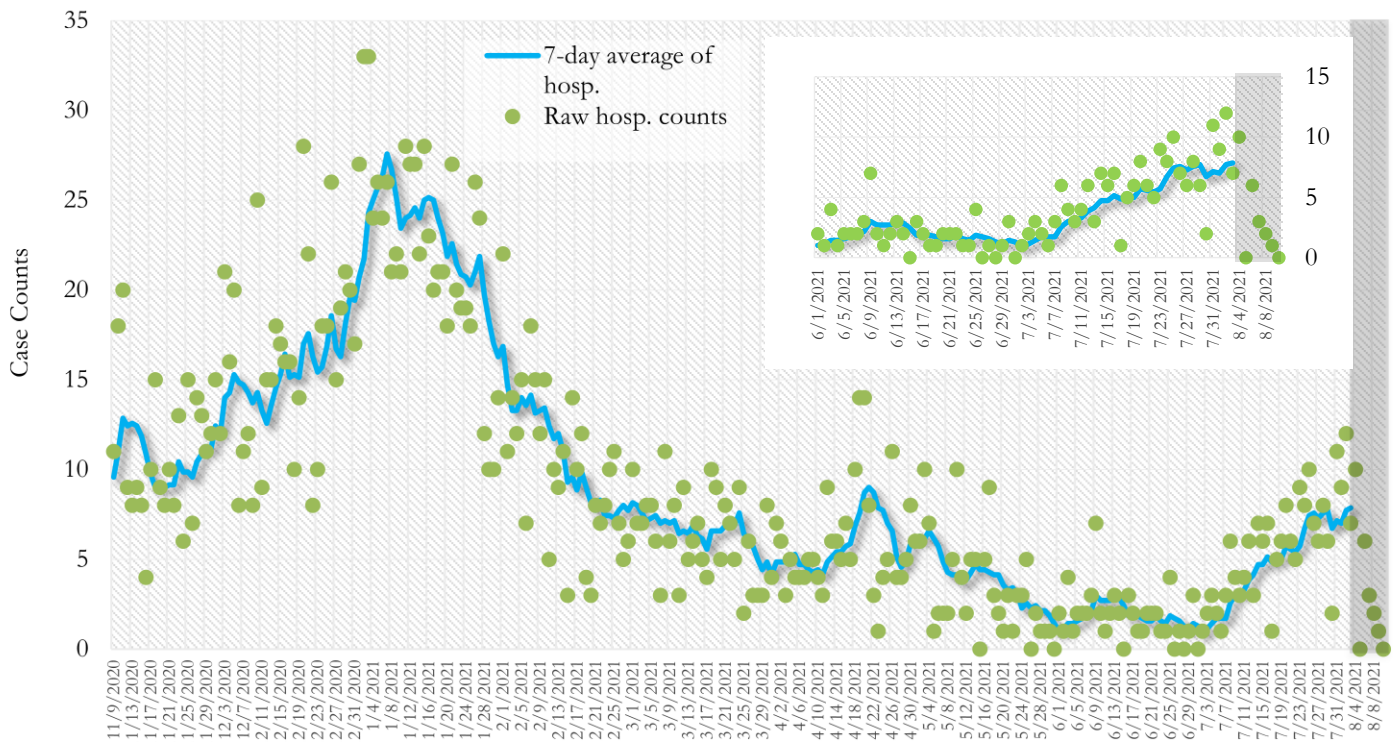
*Date of collection of first positive sample used (report creation date used where sample collection date is missing). Graph above reflects the trend in COVID-19 diagnosis. Due to the high volume of testing in recent weeks, there have been delays in reporting lab results. Thus, the trend is subject to change as more lab results get added to the state surveillance database.

Fig. 3. New COVID-19 Cases in Georgia State Daily (Averaged over 7 days)



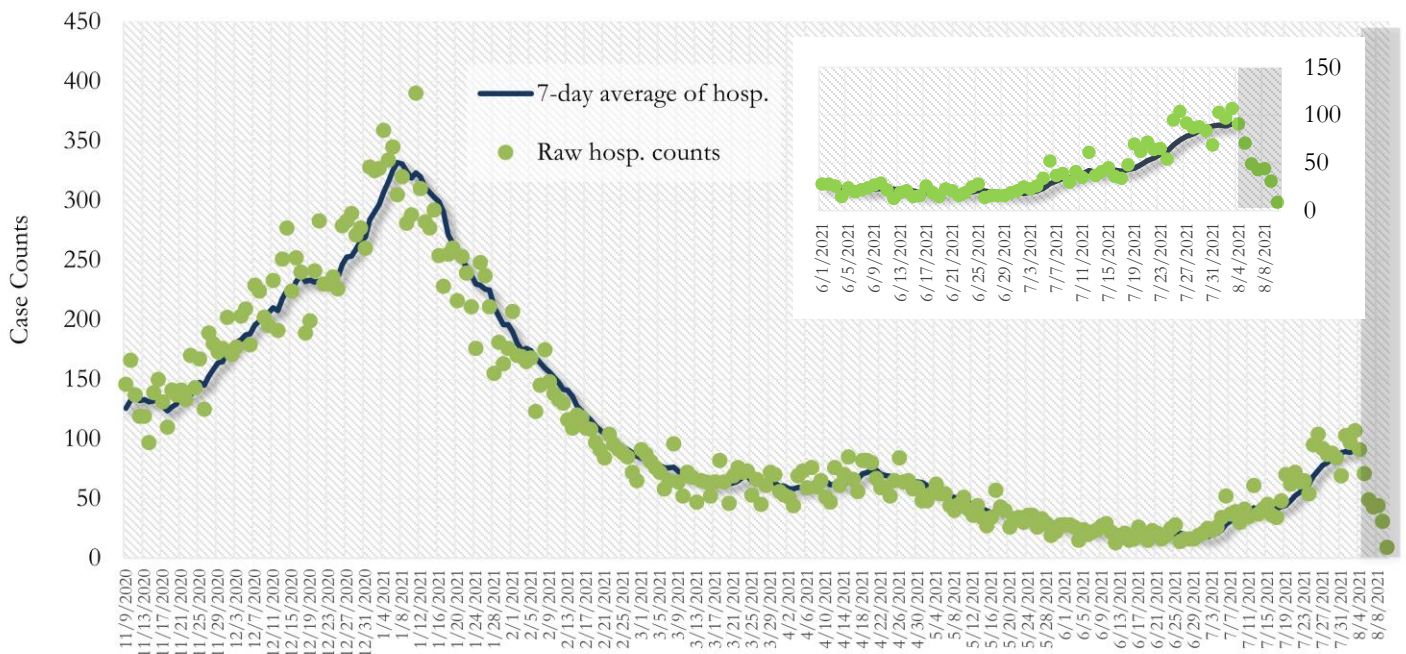
*Date of collection of first positive sample used (report creation date used where sample collection date is missing). Graph above reflects the trend in COVID-19 diagnosis. Due to the high volume of testing in recent weeks, there have been delays in reporting lab results. Thus, the trend is subject to change as more lab results get added to the state surveillance database.

Fig. 4. COVID-19 Hospitalizations in Fulton County Daily (Averaged over 7 days)



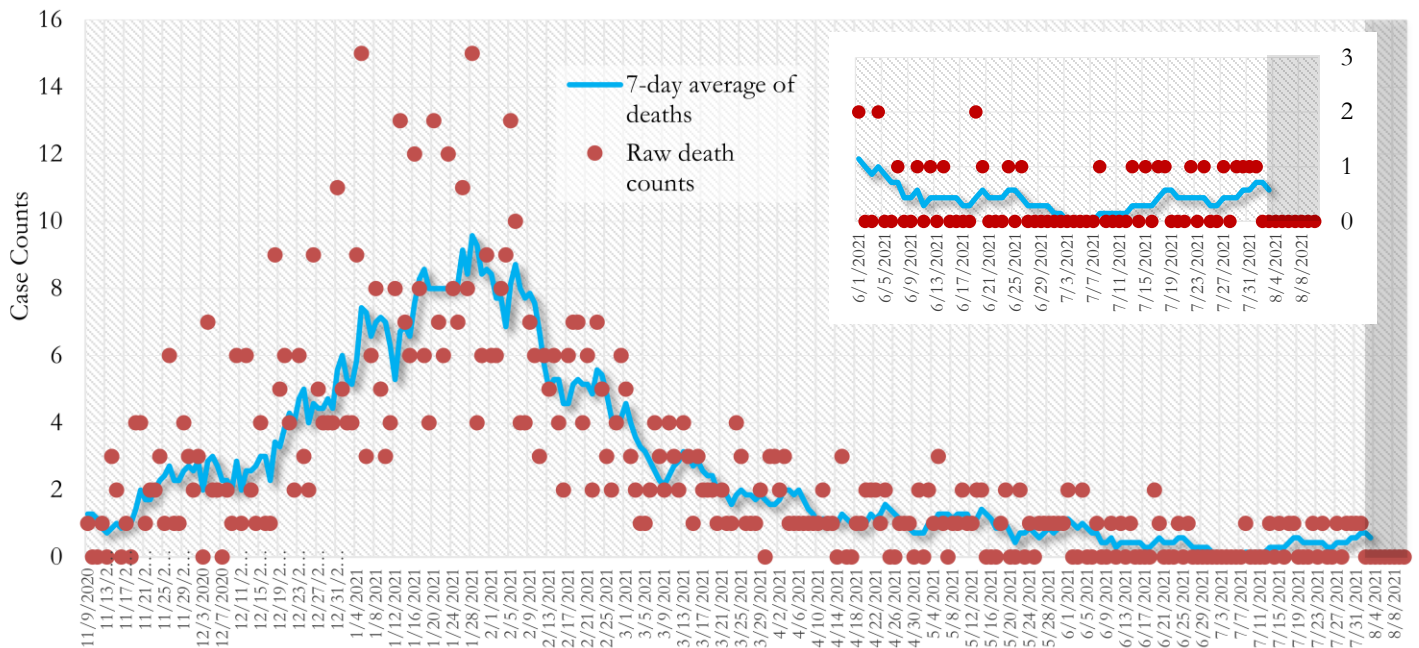
*Reported date of hospital admission used. Graph above reflects the trend in COVID-19 hospitalizations. Due to the high volume of new cases being added daily, there have been delays in reporting hospitalization data. Thus, the trend is likely to change as more hospitalization data is reported in the state surveillance database.

Fig. 5. COVID-19 Hospitalizations in Georgia State Daily (Averaged over 7 days)



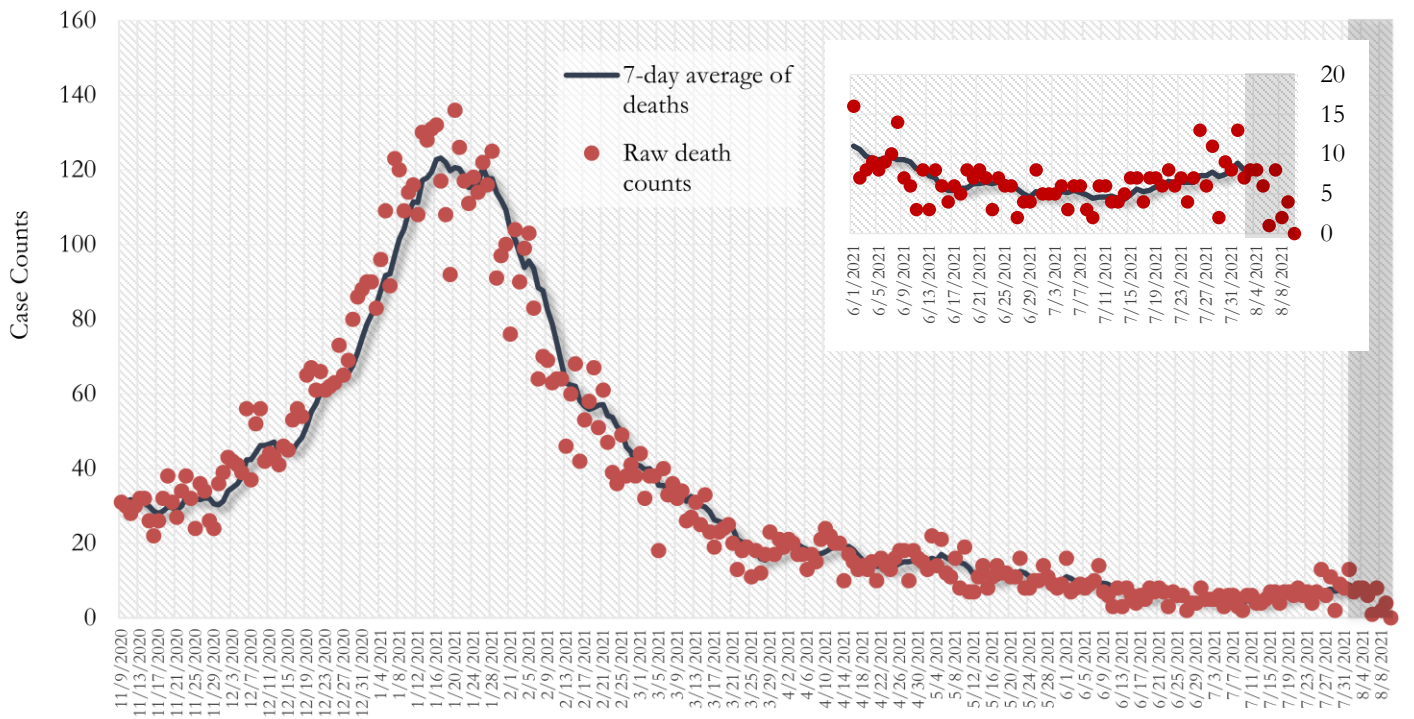
*Reported date of hospital admission used. Graph above reflects the trend in COVID-19 hospitalizations. Due to the high volume of new cases being added daily, there have been delays in reporting hospitalization data. Thus, the trend is likely to change as more hospitalization data is reported in the state surveillance database.

Fig. 6. COVID-19 Deaths in Fulton County Daily (Averaged over 7 days)



*Reported date of death used. Graph above reflects the trend in deaths attributed to COVID-19. The trend is likely to change as more data on deaths among persons with COVID-19 is reported in the state surveillance database.

Fig. 7. COVID-19 Deaths in Georgia State Daily (Averaged over 7 days)



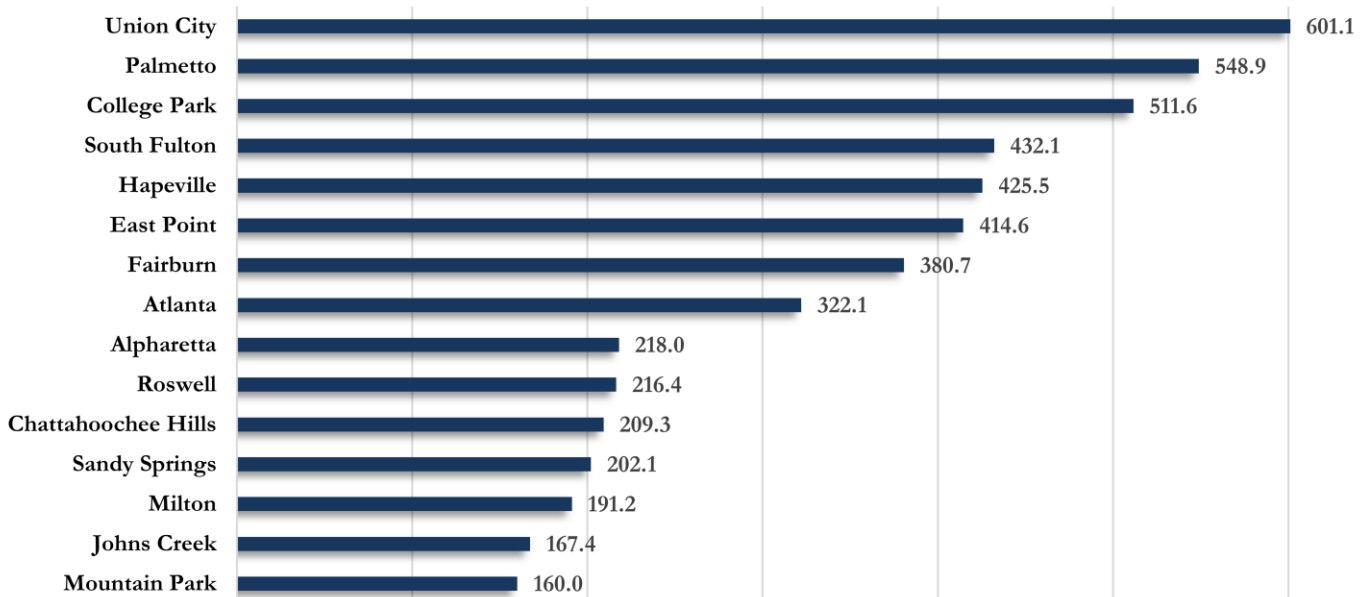
*Reported date of death used. Graph above reflects the trend in deaths attributed to COVID-19. The trend is likely to change as more data on deaths among persons with COVID-19 is reported in the state surveillance database.

COVID-19 CASE COUNTS AND RATES BY CITY

	Recent 14-day reporting period ¹	Preceding 14-day reporting period	% Change from preceding 14 days (%) ²	Incidence Rate ³
	7/21-8/3	7/7-7/20		
Alpharetta	141	31	↑ 354.8%	218.0
Atlanta	1421	384	↑ 270.1%	322.1
Chattahoochee Hills	<10	<10	↑ 500.0%	209.3 ⁴
College Park	71	15	↑ 373.3%	511.6
East Point	145	46	↑ 215.2%	414.6
Fairburn	56	13	↑ 330.8%	380.7
Hapeville	28	<10	↑ 366.7%	425.5
Johns Creek	140	32	↑ 337.5%	167.4
Milton	73	18	↑ 305.6%	191.2
Mountain Park	<10	0	-	160.0
Palmetto	24	<10	↑ 500.0%	548.9
Roswell	204	66	↑ 209.1%	216.4
Sandy Springs	213	66	↑ 222.7%	202.1
South Fulton	411	106	↑ 287.7%	432.1
Union City	126	36	↑ 250.0%	601.1
Unknown	93	31	-	-

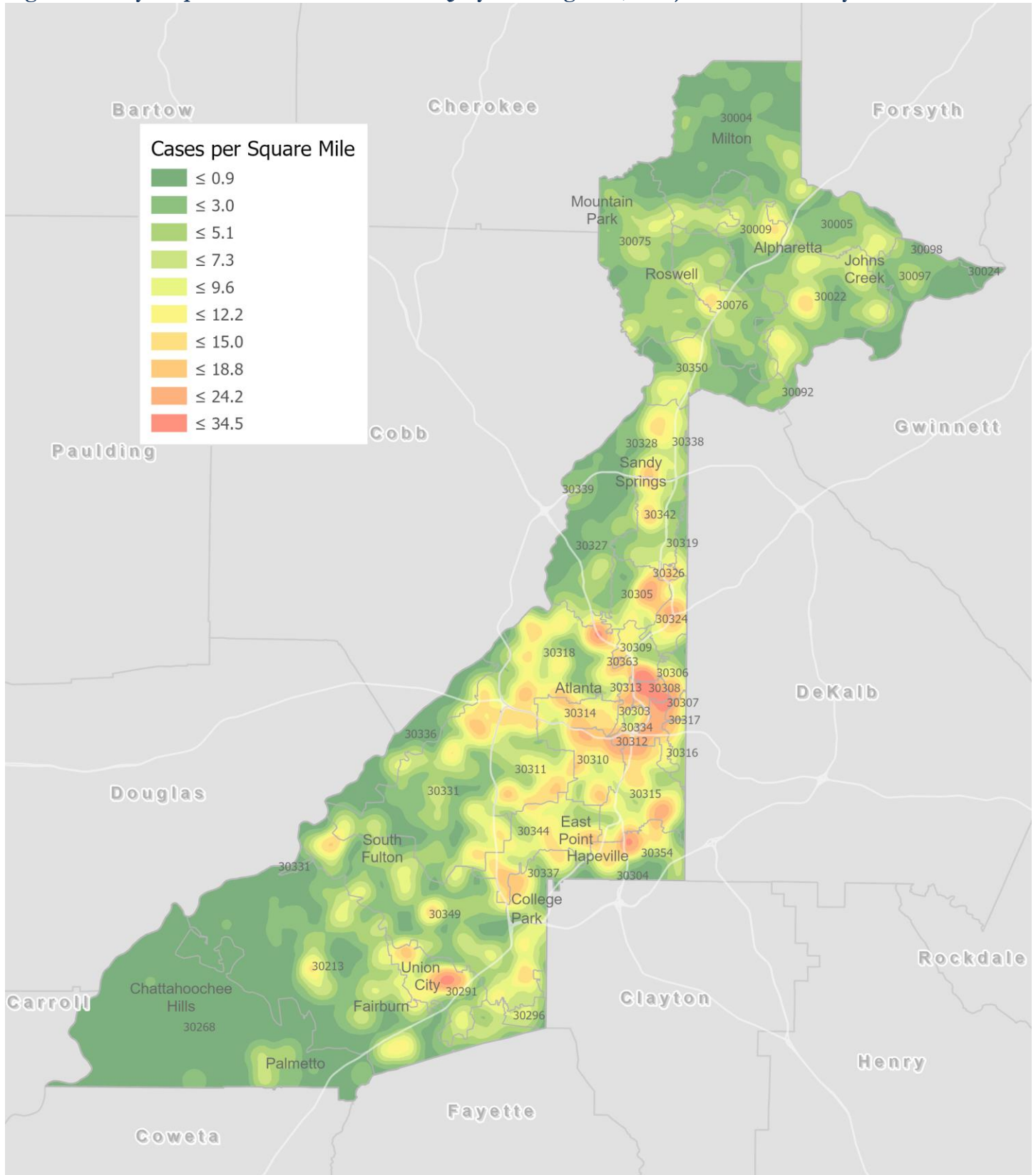
¹**New cases:** Cases diagnosed in most recent 14 days (based on reported dates of positive sample collection). To allow for lag in reporting results of new diagnoses from samples collected in the most recent week, data used for incident diagnoses analyses were moved back by one week. ²**% change:** These reflect the percentage increase or decrease in new diagnoses between the 14 days preceding the most recent 7 days and the 14 days preceding that. ³**(Incidence) Rate:** Rate of new diagnoses in the last 14 day period preceding the immediate past week. ****Data cleaning** (either during case interviews or address geo-coding) may lead to reassignment of few cases from one territory to another based on their corrected addresses. These may appear as "decreases" when compared to the previous counts. These do not reflect errors in the data collection or analysis process but only reflect the minor day-to-day fluctuations in case counts that arise in an evolving public health database like COVID's. ⁴Incidence rate is skewed high due to small population. **Note:** All data reported are preliminary and subject to change.

Fig. 8. Incidence Rates by Fulton City for Recent 14-day Reporting Period



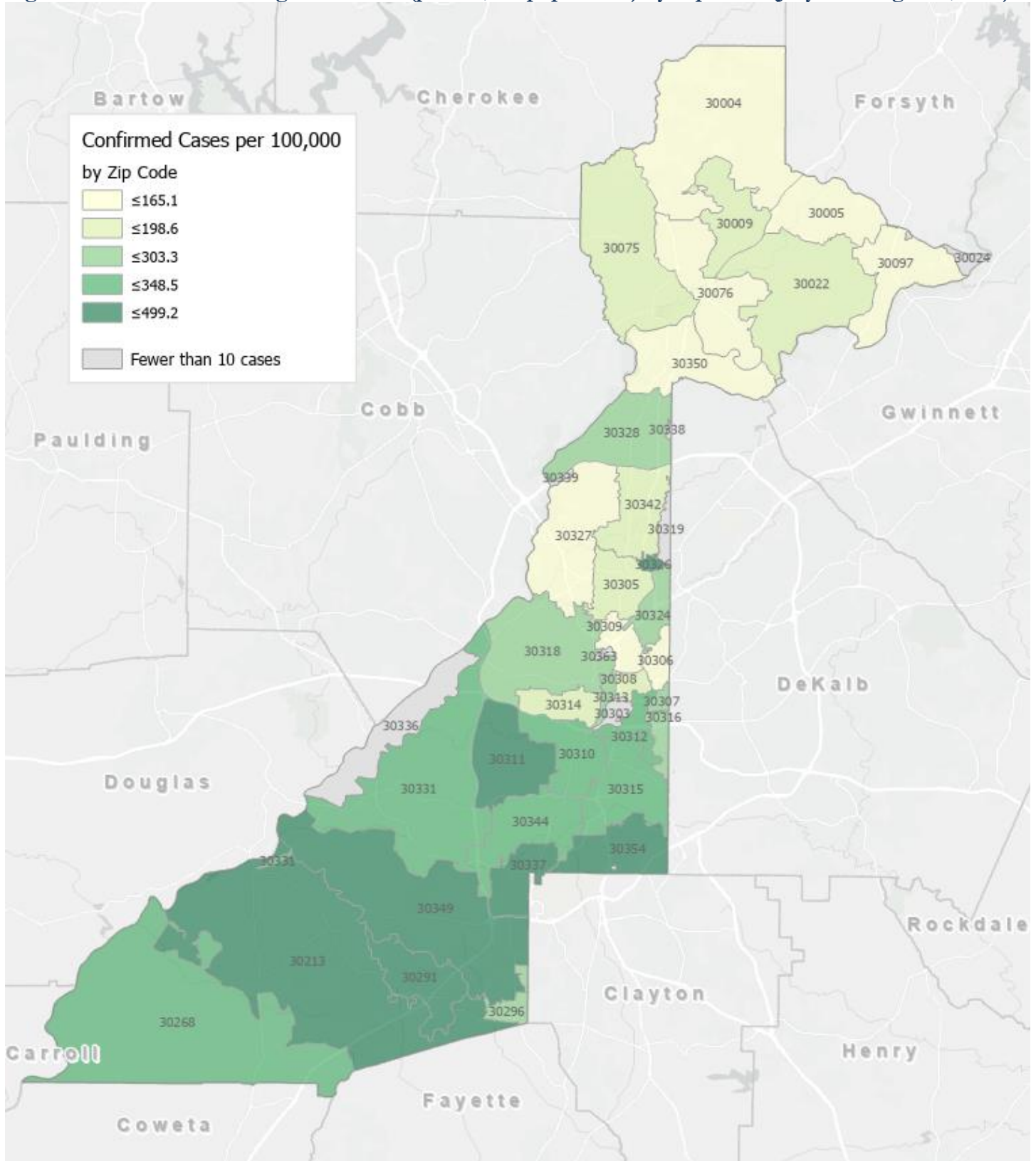
*Rates shown are per 100,000 persons | All data shown are preliminary and are subject to change as testing results get updated.

Fig. 9. Density Map – New COVID-19 Cases (July 21 – August 3, 2021) in Fulton County



New COVID-19 cases: Cases diagnosed in most recent 14 days (based on reported dates of positive sample collection). To allow for lag in reporting results of positive cases from samples collected in the immediate past 7 days, data used for incident diagnoses analyses are moved back by one week. Map reflects new COVID-19 cases diagnosed between July 21st and August 3rd, 2021 across Fulton County, excluding LTCF cases.

Fig. 10. New COVID-19 Diagnoses Rates (per 100,000 population) by Zip Code (July 21 – August 3, 2021)



*Rates shown are per 100,000 populations.

New COVID-19 cases: Cases diagnosed in most recent 14 days (based on reported dates of positive sample collection). To allow for lag in reporting results of positive cases from samples collected in the immediate past 7 days, data used for incident diagnoses analyses are moved back by one week. Data used excludes outbreak-related cases at long-term care facilities and map shown reflects only the new non-LTCF cases diagnosed between the dates shown in map title. See page 8 for zip code break down table.

COVID-19 NEW CASE¹ COUNTS BY ZIP CODE

Zip Code	Recent 14-day reporting period (7/21– 8/3)	Previous 14-day reporting period (7/7– 7/20)	% Change between reporting periods ²
All Fulton	3154	855	↑ 268.9%
30004	102	21	↑ 385.7%
30005	53	28	↑ 89.3%
30009	45	10	↑ 350.0%
30022	152	26	↑ 484.6%
30023	0	0	-
30024	<10	<10	-
30075	104	34	↑ 205.9%
30076	85	26	↑ 226.9%
30080	0	0	-
30097	28	<10	↑ 300.0%
30098	0	0	-
30135	0	0	-
30138	0	0	-
30139	0	0	-
30213	167	46	↑ 263.0%
30268	32	<10	↑ 540.0%
30291	120	32	↑ 275.0%
30296	17	<10	↑ 750.0%
30301	0	0	-
30303	11	<10	↑ 266.7%
30305	64	17	↑ 276.5%
30306	27	14	↑ 92.9%
30307	18	<10	↑ 500.0%
30308	41	12	↑ 241.7%
30309	56	29	↑ 93.1%
30310	113	34	↑ 232.4%
30311	135	27	↑ 400.0%
30312	92	21	↑ 338.1%
30313	27	12	↑ 125.0%
30314	60	21	↑ 185.7%
30315	135	36	↑ 275.0%
30316	40	15	↑ 166.7%
30318	218	48	↑ 354.2%
30319	<10	0	-
30321	0	0	-
30324	69	29	↑ 137.9%
30326	24	<10	↑ 500.0%
30327	53	16	↑ 231.3%
30328	77	28	↑ 175.0%
30331	223	49	↑ 355.1%
30334	<10	0	-
30336	10	<10	↑ 400.0%
30337	65	11	↑ 490.9%

Zip Code	Recent 14-day reporting period (7/21– 8/3)	Previous 14-day reporting period (7/7– 7/20)	% Change between reporting periods
30338	<10	<10	-
30339	18	<10	↑ 350.0%
30340	<10	0	-
30341	0	0	-
30342	75	18	↑ 316.7%
30344	131	38	↑ 244.7%
30345	<10	0	-
30349	256	78	↑ 228.2%
30350	69	21	-
30354	84	14	↑ 500.0%
30358	0	0	-
30363	11	0	↑ 100.0%
30374	<10	0	-
30606	0	0	-
31131	0	0	-
31150	0	0	-
Unknown	27	<10	-

¹**New cases:** Cases diagnosed in most recent 28 days (based on reported dates of positive sample collection). To allow for lag in reporting results of new diagnoses from samples collected in the most recent week, data used for incident diagnoses analyses were moved back by one week. ²**Percent change:** These reflect the percentage increase or decrease of new diagnoses between the 14 days preceding the past 7 days and the 14 days preceding that. Changes in ZIP codes with less than 10 cases in both 2 week intervals are not reported.

COVID-19 HOSPITALIZATIONS, ICU ADMISSIONS AND DEATHS IN FULTON

Fig. 11. Fulton County Covid-19 Cases Hospitalized and Admitted to ICU by Month

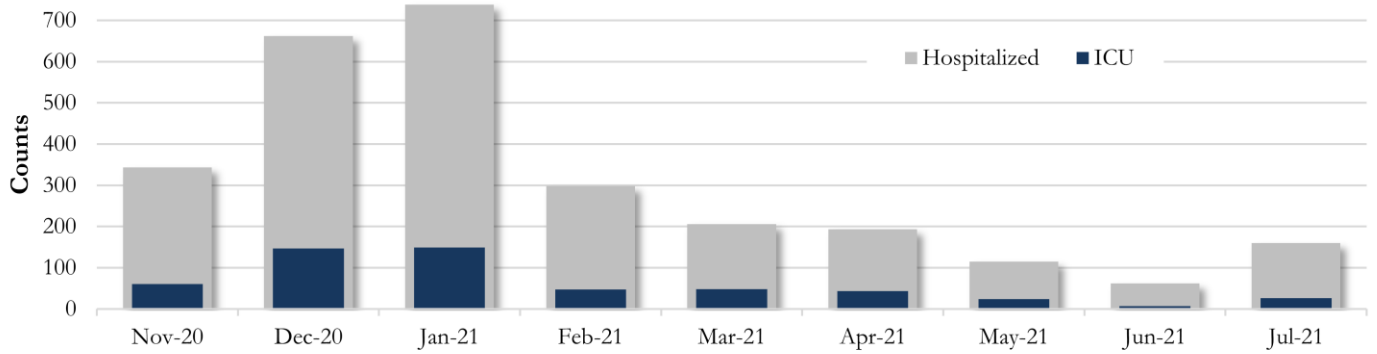
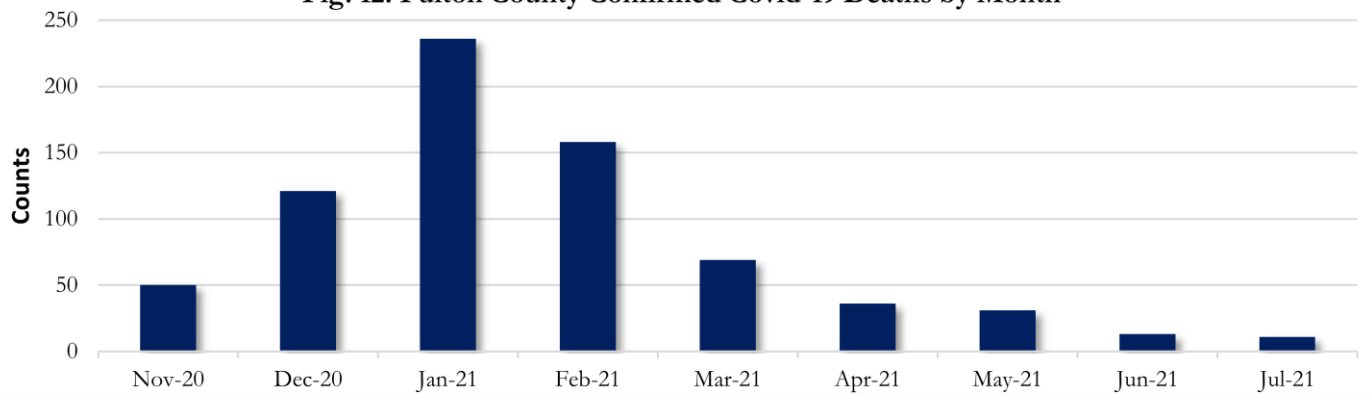
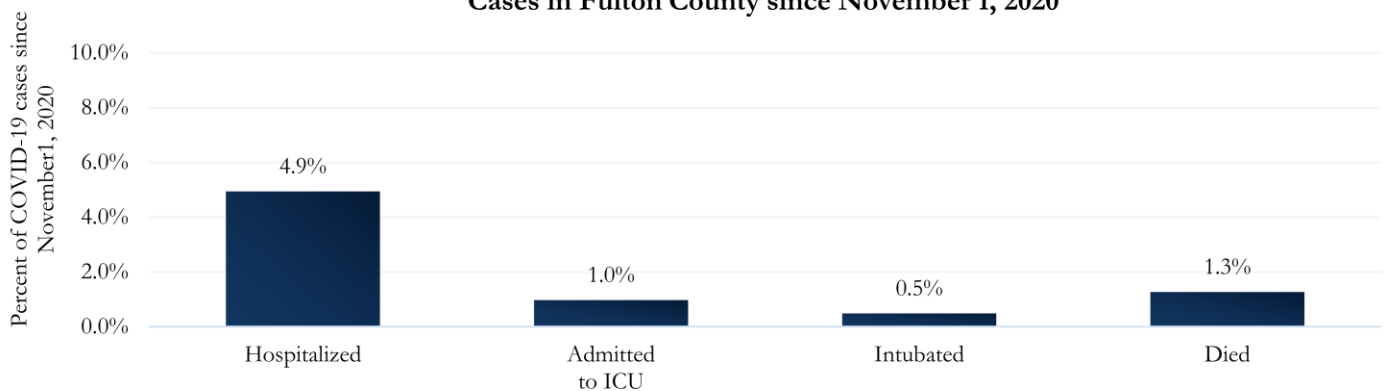


Fig. 12. Fulton County Confirmed Covid-19 Deaths by Month



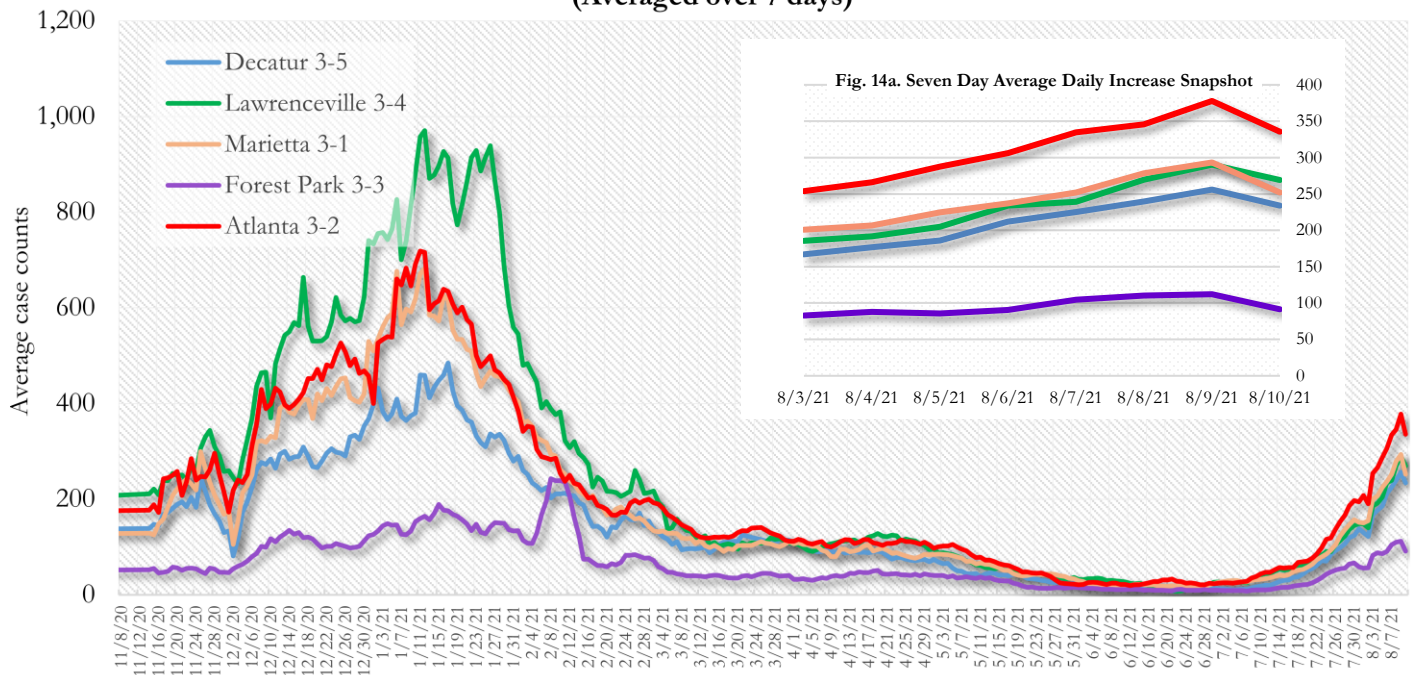
Values for July 2021 in figures 13 and 14 are subject to change as more hospitalizations, ICU admissions, and deaths get reported to state and local entities.

Fig. 13. Hospitalizations, ICU Admissions, Intubations, and Deaths among all COVID-19 Cases in Fulton County since November 1, 2020



COVID-19 CASE TRENDS IN FULTON AND SURROUNDING DISTRICTS

**Fig. 14. Daily Case Counts for Atlanta Metro Districts
(Averaged over 7 days)**



DEMOGRAPHIC DISTRIBUTIONS – COVID-19 CASES AND DEATHS

Table A - Cumulative and recent confirmed Covid-19 case and death counts by gender, age, and race/ethnicity in Fulton County, Georgia. Past 28 day period refers to July 7 – August 3, 2021

	Total Confirmed Cases	% of Total Cases	Confirmed Cases past 28 days	% of Confirmed Cases past 28 days	Total Confirmed Deaths	% of Total Deaths	Confirmed Deaths past 28 days	% of Confirmed Deaths past 28 days
TOTAL	90341		3978		1387		12	
Female	47776	52.9%	2236	56.2%	659	47.5%	<10	50.0%
Male	42131	46.6%	1731	43.5%	728	52.5%	<10	50.0%
Unknown*	434	<1%	<10	<1%	0	-	0	-
0-9	3596	4.0%	299	7.5%	0	-	0	-
10-19	9566	10.6%	511	12.8%	<10	<1%	0	-
20-29	20423	22.6%	868	21.8%	<10	<1%	0	-
30-39	17495	19.4%	888	22.3%	29	2.1%	0	-
40-49	13727	15.2%	598	15.0%	43	3.1%	<10	16.7%
50-59	12089	13.4%	421	10.6%	127	9.2%	<10	8.3%
60-69	7020	7.8%	218	5.5%	256	18.5%	<10	25.0%
>70	6368	7.0%	168	4.2%	926	66.8%	<10	50.0%
Unknown*	57	<1%	<10	<1%	0	-	0	-
Asian, NH	3422	3.8%	102	2.6%	24	1.7%	0	-
Black, NH	38727	42.9%	2287	57.5%	858	61.9%	<10	66.7%
White, NH	29802	33.0%	900	22.6%	441	31.8%	<10	25.0%
Hispanic, all races	9421	10.4%	245	6.2%	58	4.2%	<10	8.3%
Other, NH	3030	3.4%	108	2.7%	<10	<1%	0	-
Unknown*	5939	6.6%	336	8.4%	0	-	0	-

*Unknown includes cases not yet interviewed. 28 days delayed by seven to account for lag in reporting lab results. Deaths refer to all persons who had a positive PCR test result for Covid-19 and there is evidence that COVID-19 was the cause of death or a significant contributor to their death.

The following data are updated every two weeks.

Last updated 8/4/2021

Data are from confirmed cases and PCR testing only.

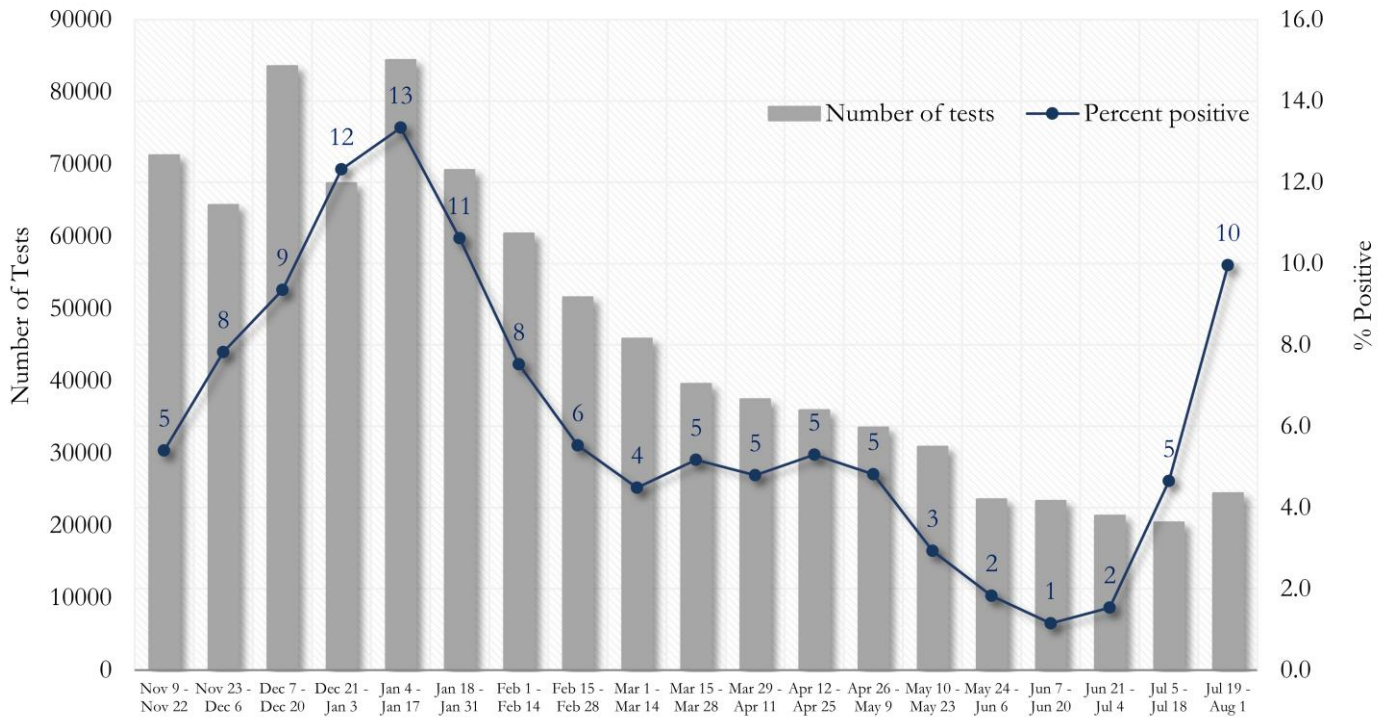
These data are generated using a fixed start date and counted forward in 14-day intervals. Using these time blocks allows for the stability in trends over time and accounts for delays in reporting lab results.

In the interest of keeping the reports concise and useful, the cumulative counts updated on a monthly basis can now be viewed between updates at the Fulton County Board of Health website [here](#).

Please visit the Georgia Department of Public Health Daily Status Report [here](#) for cumulative daily counts.

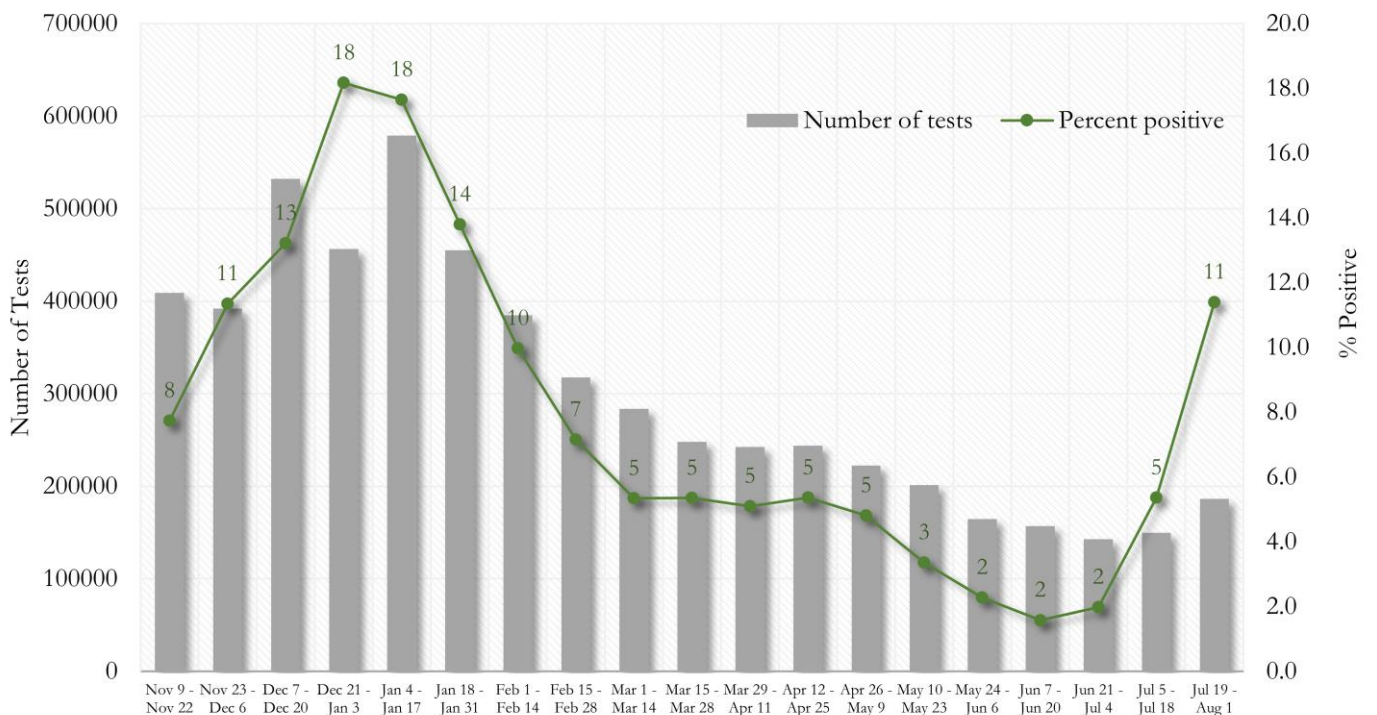
COVID-19 TESTING AND POSITIVITY IN FULTON COUNTY AND GEORGIA

Fig. 15. Trends in Positive COVID-19 Tests in Fulton County by 14-day Periods



*Data on Polymerase Chain Reaction (PCR) tests only included.

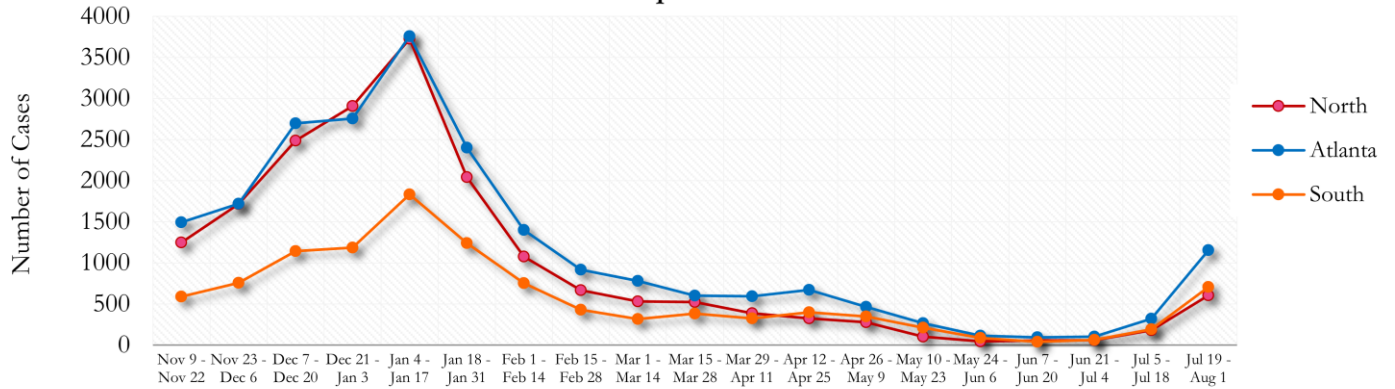
Fig. 16. Trends in Positive COVID-19 Tests in Georgia by 14-day Periods



*Data on Polymerase Chain Reaction (PCR) tests only included.

TRENDS IN COVID-19 CASES AMONG DEMOGRAPHIC GROUPS (14 DAY PERIODS)

Fig. 17. Trends in Geographic distribution of COVID-19 Cases in Fulton County by 14-day periods



In the past two weeks, Atlanta accounted for the majority of new cases.

*North - Includes all Fulton cities north of Atlanta (Alpharetta, Johns Creek, Milton, Mountain Park, Roswell, Sandy Springs)

*South - Includes all Fulton cities south of Atlanta (Chattahoochee Hills, College Park, East Point, Fairburn, Hapeville, Palmetto, South Fulton, and Union City)

Fig. 18. Trends in Racial Distribution of COVID-19 Cases in Fulton County by 14-day periods

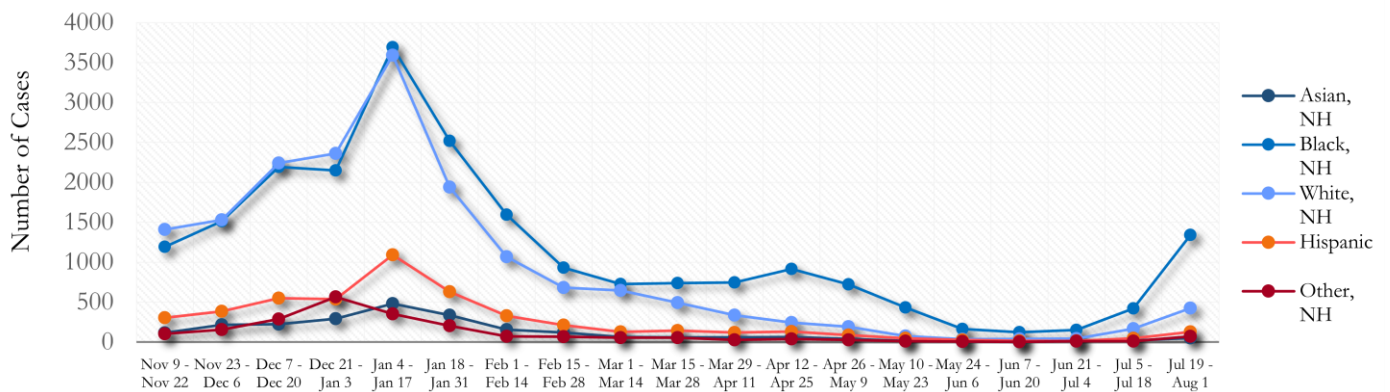
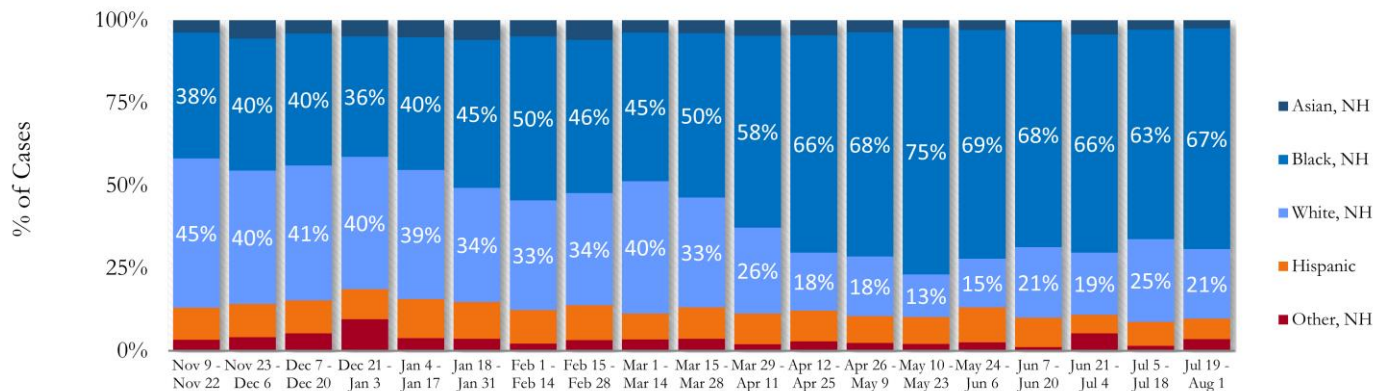


Fig. 19. Racial Distribution of COVID-19 Cases in Fulton County by 14-day periods



About 7% of all Fulton County COVID cases are missing data on patient race and ethnicity and in the past two weeks, about 20% of cases are missing this data. Percentages do not include the missing data and thus are subject to change as data are cleaned.

Fig. 20. Trends in Gender Distribution of COVID-19 Cases in Fulton County by 14-day periods

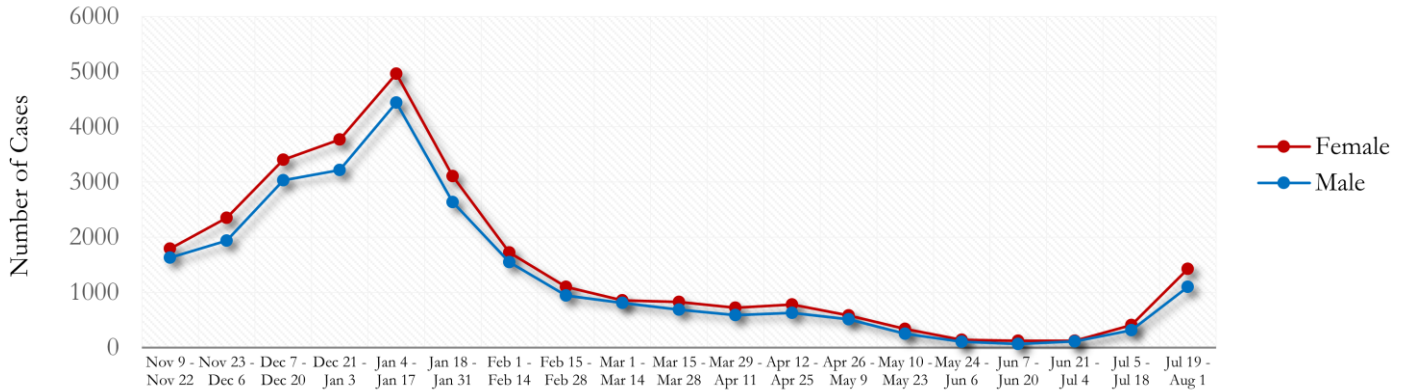
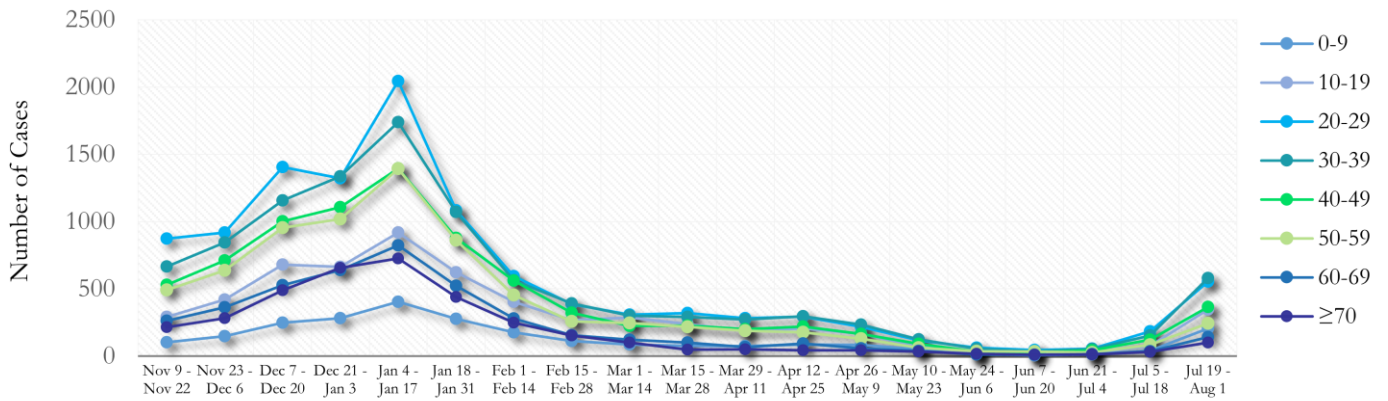
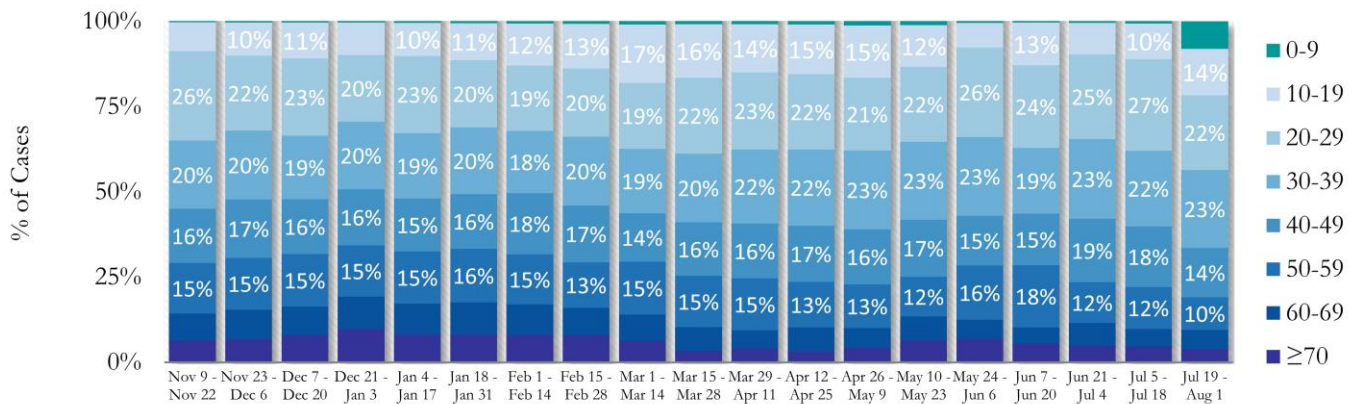


Fig. 21. Trends in Age Distribution of COVID-19 Cases in Fulton County by 14-day periods



In the most recent two weeks, 20-29 year olds and 30-39 year olds accounted for the majority of new cases.

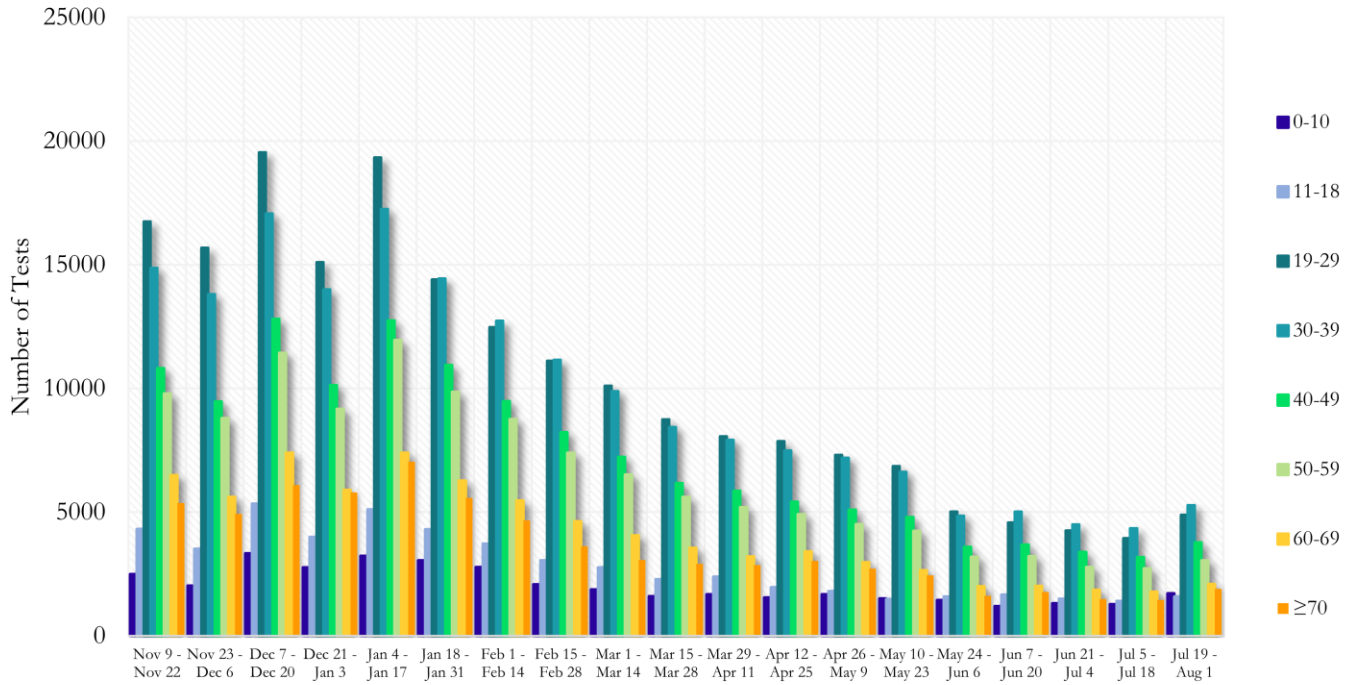
Fig. 22. Age Distribution of COVID-19 Cases in Fulton County by 14-day periods



Value labels under 10% are not shown.

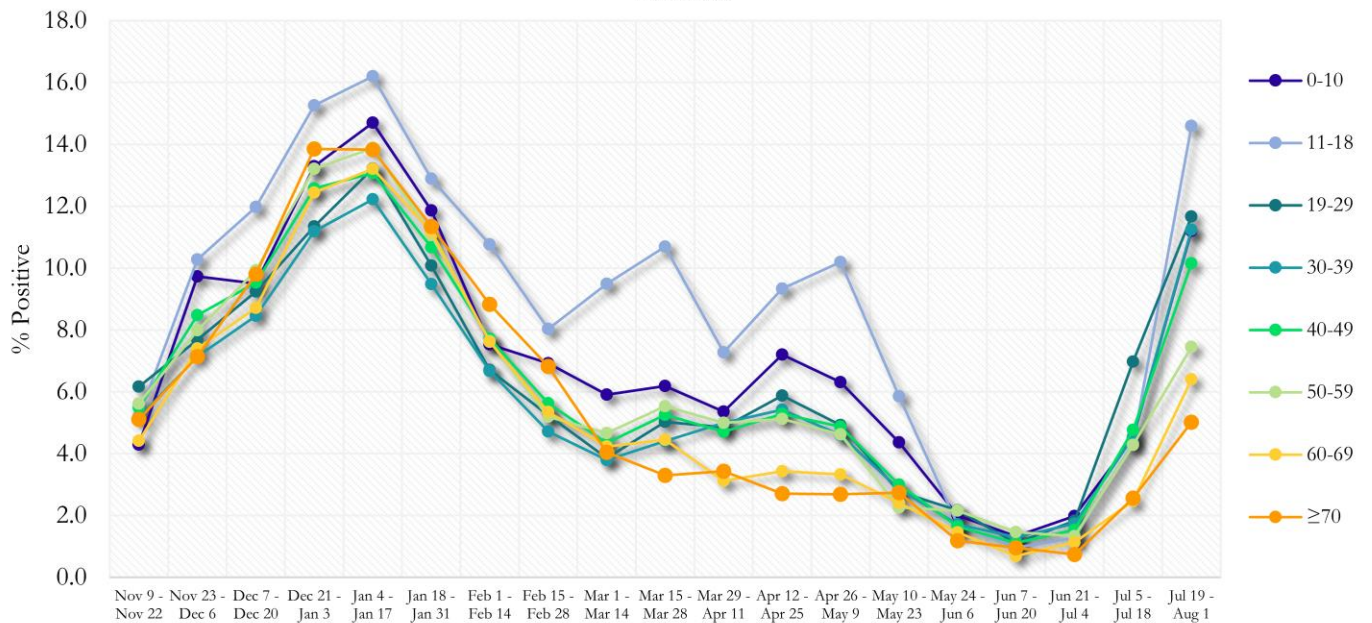
COVID-19 TESTING AND POSITIVITY IN FULTON COUNTY BY AGE AND RACE

Fig. 23. COVID-19 Tests by Age in Fulton County by 14-day Periods



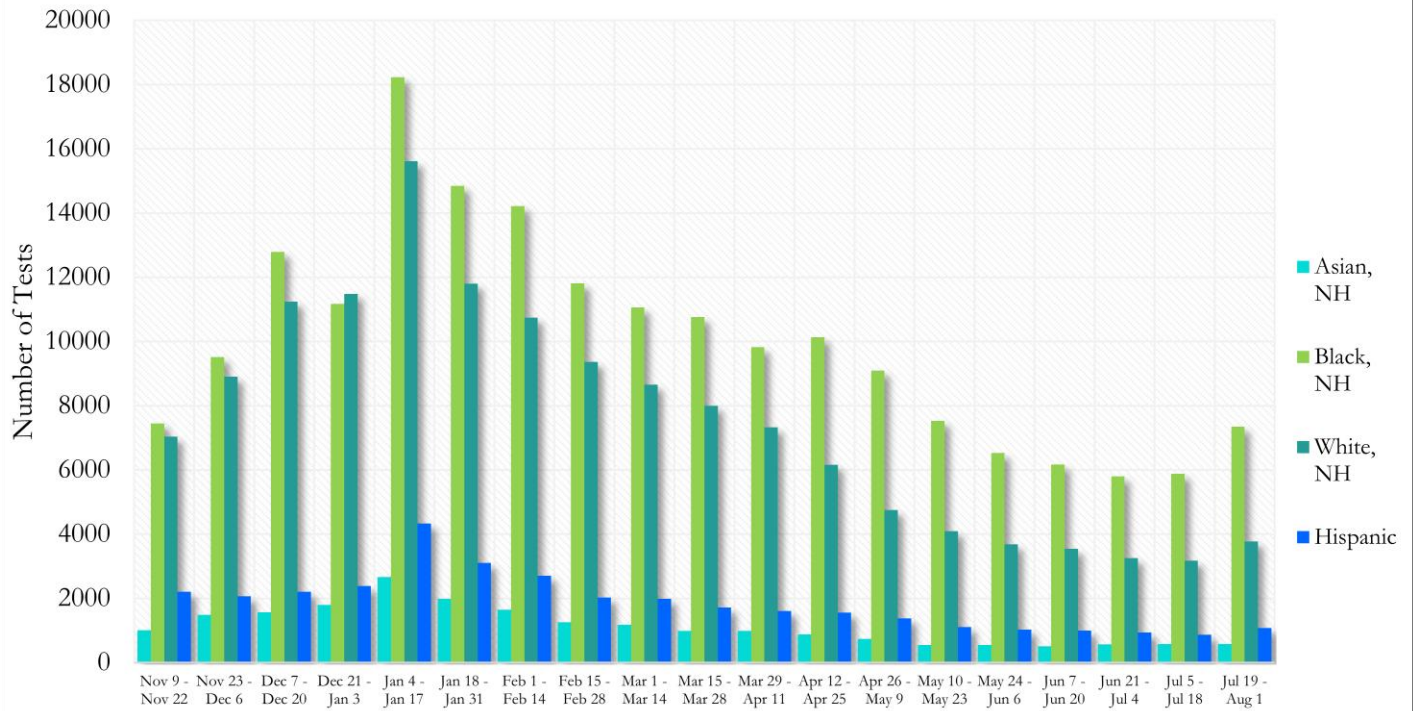
*Data on Polymerase Chain Reaction (PCR) tests only included.

Fig. 24. Percent Positive COVID-19 Tests by Age Group in Fulton County by 14-day Periods



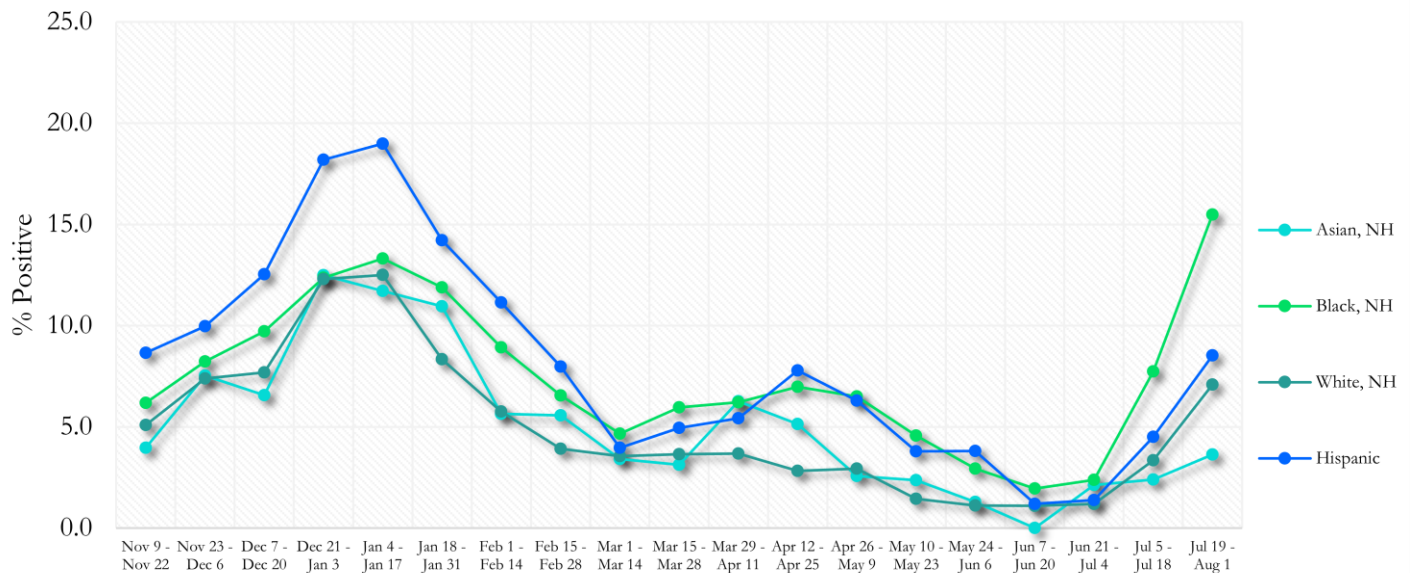
*Data on Polymerase Chain Reaction (PCR) tests only included.

Fig. 25. COVID-19 Tests by Race and Ethnicity in Fulton County by 14-day Periods



*Data on Polymerase Chain Reaction (PCR) tests only included. For the recent two weeks, 48% of test results did not have race/ethnicity information.

Fig. 26. Percent Positive COVID-19 Tests by Race and Ethnicity in Fulton County by 14-day Periods



*Data on Polymerase Chain Reaction (PCR) tests only included.