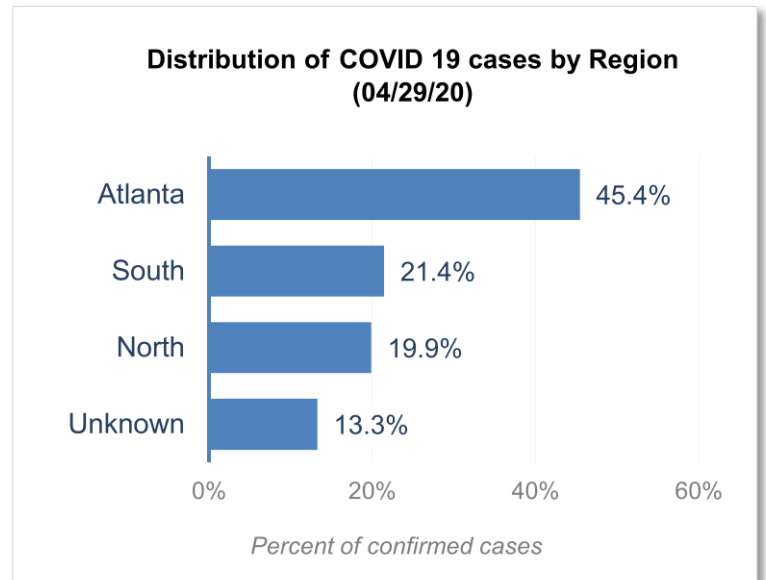


DISTRIBUTION OF COVID-19 DIAGNOSES BY REGION

Fulton Region	% of current cases
Atlanta	45.4%
North ¹	19.9%
South ²	21.4%
Unincorporated/Unknown	13.3%

¹Includes all Fulton County cities north of Atlanta metro (Alpharetta, Milton, Johns Creek, Roswell, Sandy Springs, Mountain Park)

²Includes all cities south of Atlanta (College Park, Chattahoochee Hills, East Point, Hapeville, Palmetto, South Fulton, Fairburn, Union City)



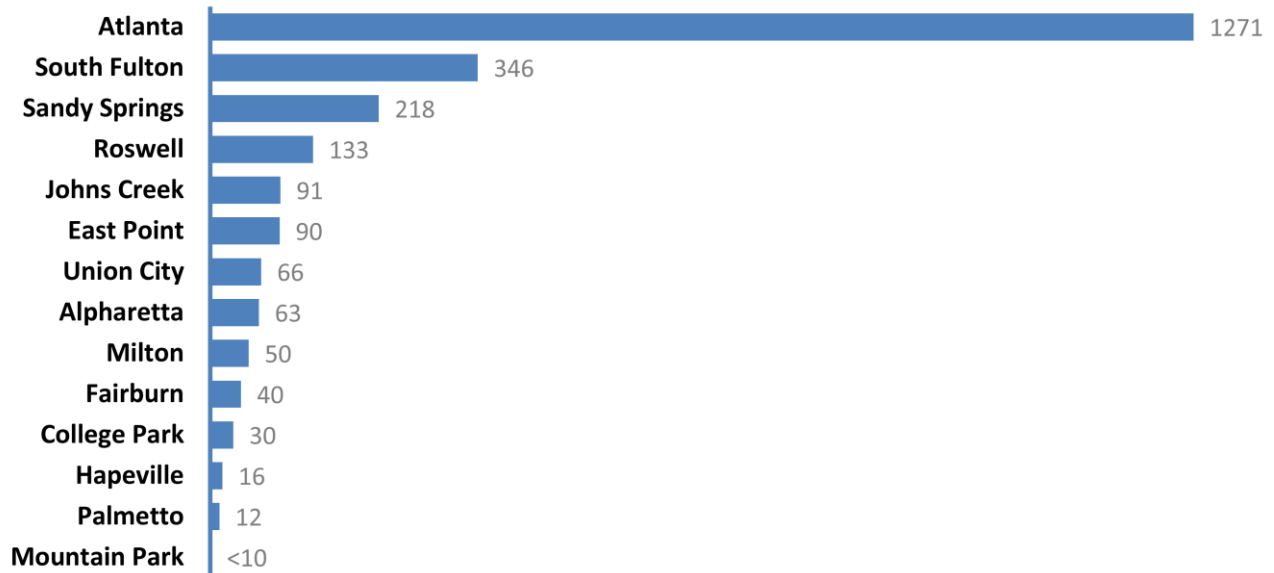
DISTRIBUTION OF COVID-19 DIAGNOSES BY CITY

	Count (4/27/2020)	Count (04/29/20)	Percent of Current Total	% Change	COVID-19 Diagnoses Rate (per 100,000 persons)*
Atlanta	1212	1271	45.4%	5%	288.1
South Fulton	335	346	12.4%	3%	363.8
Sandy Springs	207	218	7.8%	5%	206.8
Roswell	99	133	4.8%	34%	141.1
East Point	89	90	3.2%	1%	257.3
Johns Creek	87	91	3.3%	5%	108.8
Union City	61	66	2.4%	8%	314.9
Alpharetta	59	63	2.3%	7%	97.4
Milton	43	50	1.8%	16%	131.0
Fairburn	37	40	1.4%	8%	272.0
College Park	28	30	1.1%	7%	216.2
Palmetto	12	12	0.4%	0%	274.5
Hapeville	15	16	0.6%	7%	243.1
Mountain Park	0	<10	0.0%	-	160.0
Unknown	343	370	13.2%	-	-

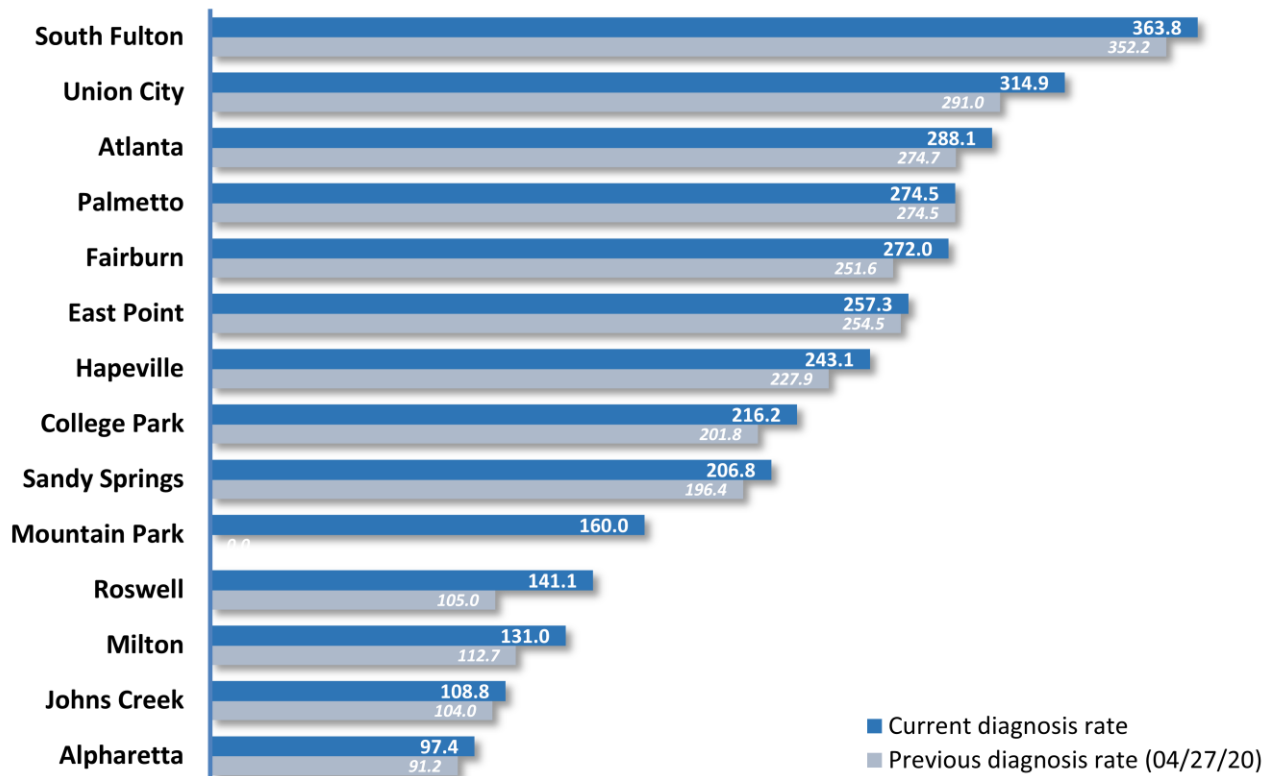
*Source: US Census Bureau. Population estimates (as at July 1, 2018) used to calculate diagnoses rate. Please note that population count used to calculate diagnosis rate in Atlanta only reflects the Fulton County portion of the city (excludes 10% or thereabouts in DeKalb). This also applies to College Park's numbers (excludes the part in Clayton).

** Data cleaning (either during detailed data collection that takes place at case interviews or during the geo-coding process) may lead to reassignment of few cases from one territory to another and these may appear as "decreases" when compared to the previous day's count. These do not reflect errors in the data collection or analysis process but only reflect the minor day-to-day fluctuations in case counts that arise in an evolving public health database like COVID's.

Number of confirmed COVID-19 Diagnoses in Fulton County by City (04/29/20)

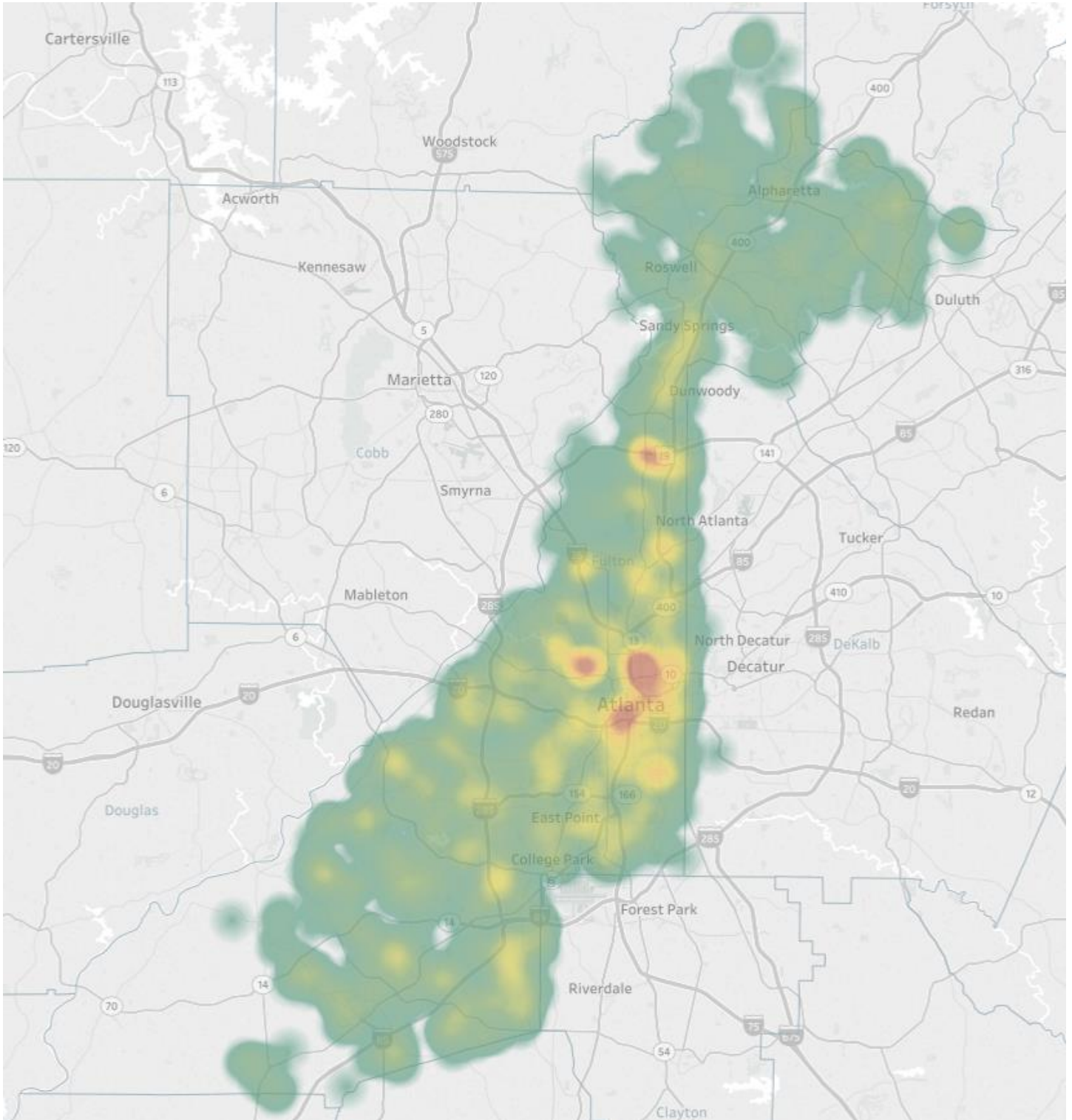


COVID-19 Diagnoses Rate in Fulton County by City (04/29/20)



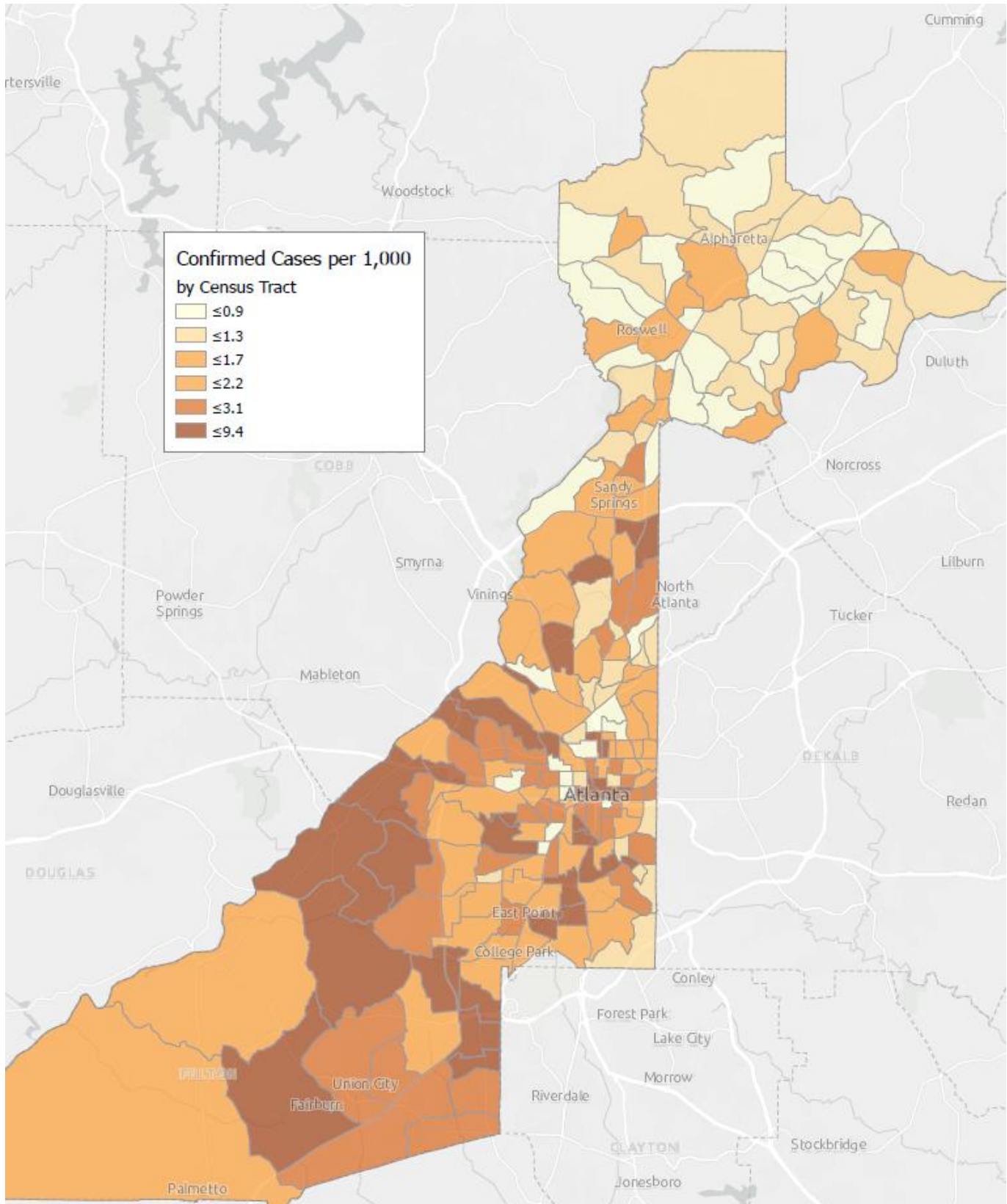
*Rates shown are per 100,000 persons

Density Map of COVID-19 Cases in Fulton County (04/29/20)



NB. Data used excludes the outbreak-related cases diagnosed at long-term care facilities and reflects the current geographical distribution of COVID19 diagnoses in the general Fulton County community.

COVID-19 Distribution by Census Tract (04/29/2020)



NB. Data used excludes the outbreak-related cases diagnosed at long-term care facilities and reflects the current geographical distribution of COVID19 diagnoses in the general Fulton County community.

DISTRIBUTION COVID-19 DIAGNOSES BY ZIP CODE

ZIP code	Count (4/27/2020)	Count (04/29/20)	Percent of Current Total	Change (%)
30331	267	270	9.7%	1%
30318	142	152	5.4%	7%
30349	175	180	6.4%	3%
30213	107	112	4.0%	5%
30315	98	101	3.6%	3%
30344	86	89	3.2%	3%
30311	87	93	3.3%	7%
30342	114	118	4.2%	4%
30314	58	60	2.1%	3%
30310	66	74	2.6%	12%
30308	61	64	2.3%	5%
30022	69	70	2.5%	1%
30327	58	60	2.1%	3%
30004	57	66	2.4%	16%
30309	95	98	3.5%	3%
30076	50	50	1.8%	0%
30291	62	92	3.3%	48%
30350	48	53	1.9%	10%
30075	38	69	2.5%	82%
30328	53	56	2.0%	6%
30316	30	33	1.2%	10%
30312	161	164	5.9%	2%
30005	34	38	1.4%	12%
30305	46	47	1.7%	2%
30306	31	36	1.3%	16%
30324	44	47	1.7%	7%
30337	23	24	0.9%	4%
30009	24	25	0.9%	4%
30313	27	27	1.0%	0%
30326	15	15	0.5%	0%
30097	27	29	1.0%	7%
30354	24	28	1.0%	17%
30303	28	28	1.0%	0%
30339	<10	<10	0.3%	-
30268	15	15	0.5%	0%
30307	<10	10	0.4%	-
30319	18	17	0.6%	-6%**
30336	<10	<10	0.3%	-
30296	<10	10	0.4%	-
30363	<10	<10	0.2%	-
30301	<10	<10	0.1%	-
30345	<10	<10	0.1%	-
31131	<10	<10	0.1%	-
30023	<10	<10	0.1%	-
30080	<10	<10	0.1%	-

30135	<10	<10	0.0%	-
30138	<10	<10	0.0%	-
30139	<10	<10	0.0%	-
30321	<10	<10	0.1%	-
30340	<10	<10	0.1%	-
30341	<10	<10	0.1%	-
30358	<10	<10	0.0%	-
30374	13	13	0.5%	0%
30606	<10	<10	0.0%	-
31150	<10	<10	0.0%	-
Unknown	204	212	7.6%	-

** Data cleaning (either during the detailed data collection that takes place at case interviews or during the geo-coding process) may lead to reassignment of few cases from one territory to another and these may appear as “decreases” when compared to the previous day’s count. These do not reflect errors in the data collection or analysis process but only reflect the minor day-to-day fluctuations in case counts that arise in an evolving public health database like COVID’s.

CLINICAL CASCADE – FULTON COUNTY COVID-19 DIAGNOSES

