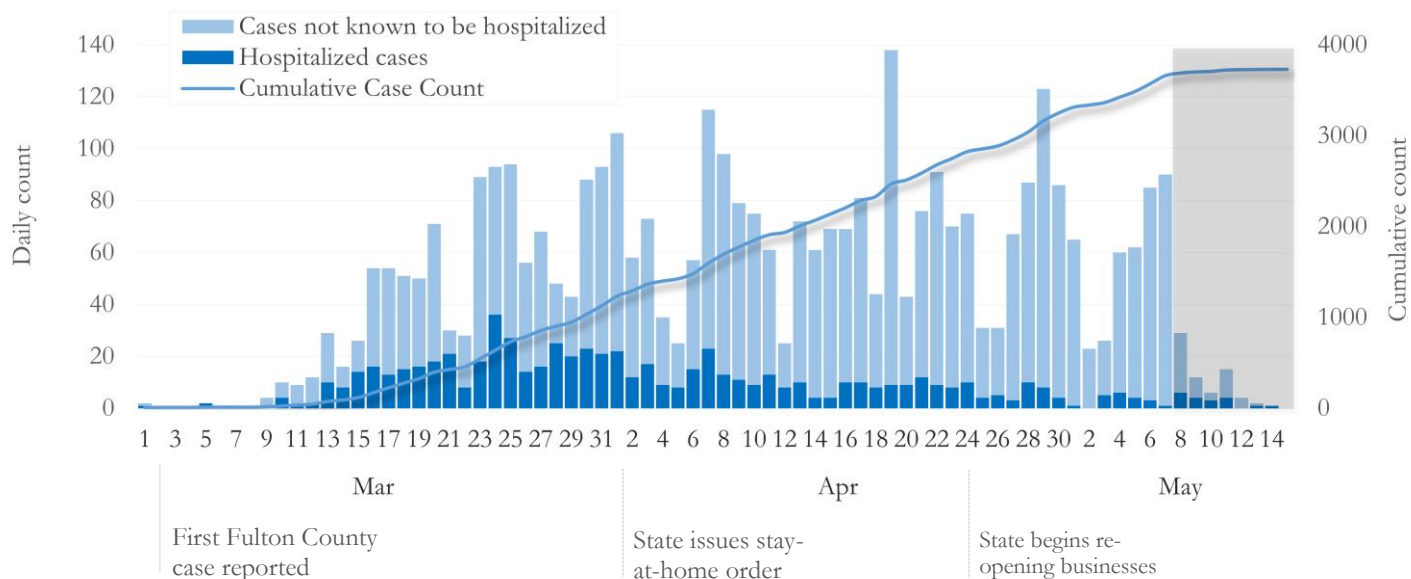


## SUMMARY

- As of May 15, 2020, Fulton County has recorded **3,729** cases of the 2019 novel coronavirus (COVID-19) and **159** deaths.
- The central portion of the county (Atlanta metro) has accounted for 45% of the overall case count while northern and southern parts of the county combined have accounted for 42% of the cases.
- By city, cumulative COVID-19 diagnoses rates have ranged from 131.5 per 100,000 persons (Johns Creek) to 524.8 per 100,000 persons (Union City).
- Among all persons diagnosed with COVID-19 in Fulton County, 18% have needed hospitalization and 4% have died.

**Daily and Cumulative COVID-19 diagnoses in Fulton County, GA (5/13/20)**



\*Counts shown reflect the number of confirmed cases as of 5/15/20 using the date of first positive sample collection. Where date of sample collection was not available or missing, the date of report creation in GA SENDSS was used instead. **\*\*Note:** All data reported are preliminary and subject to change. Delays in data reporting may cause changes in data counts, particularly in the shaded portion.

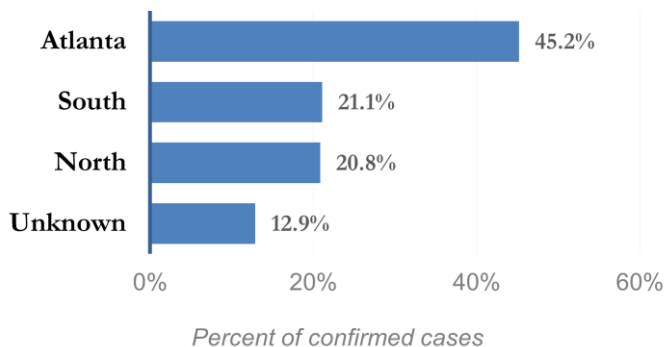
## DISTRIBUTION OF COVID-19 DIAGNOSES BY REGION

Fulton Region	% of total cases in Fulton county
Atlanta	45.2%
North <sup>1</sup>	20.8%
South <sup>2</sup>	21.1%
Unincorporated/Unknown	12.9%

<sup>1</sup>Includes all Fulton County cities north of Atlanta metro (Alpharetta, Milton, Johns Creek, Roswell, Sandy Springs, Mountain Park)

<sup>2</sup>Includes all cities south of Atlanta (College Park, Chattahoochee Hills, East Point, Hapeville, Palmetto, South Fulton, Fairburn, Union City)

**Distribution of COVID 19 cases by Region (5/15/20)**

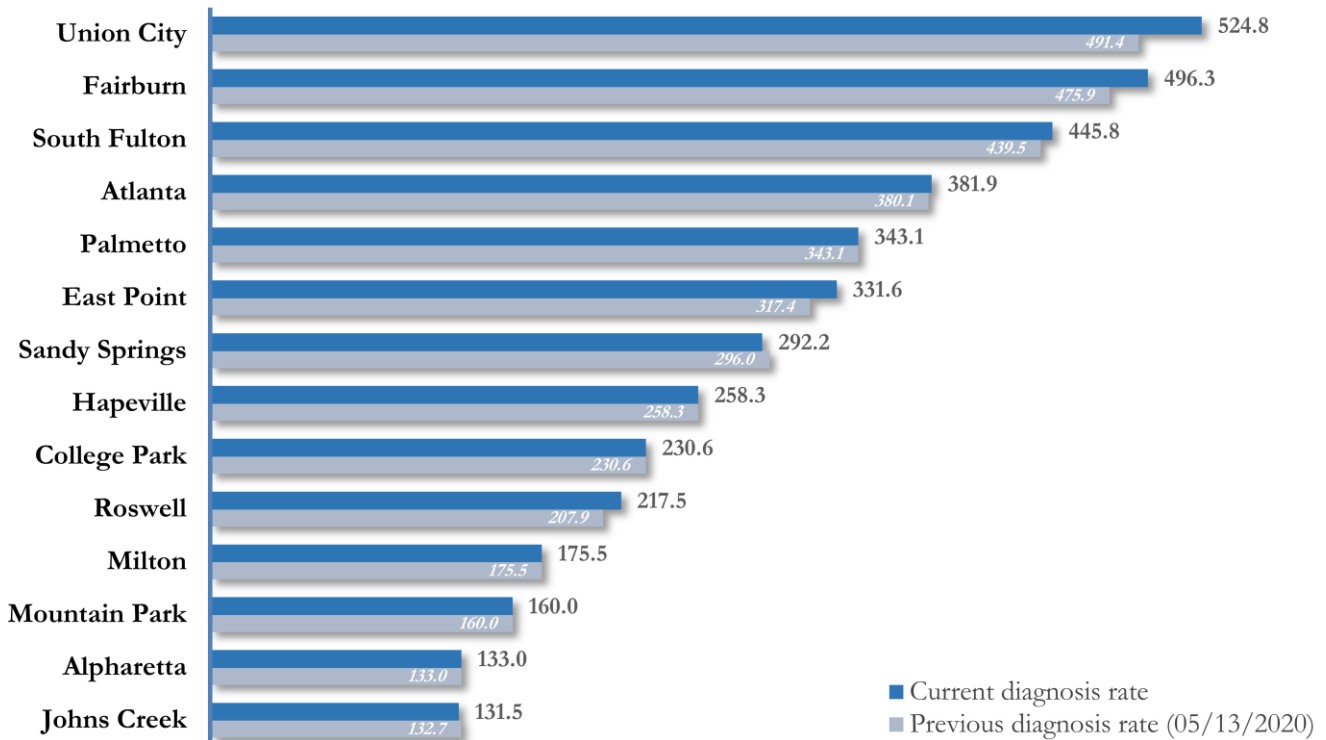


**COVID-19 CASE COUNTS AND RATES BY CITY**

	Previous Count (5/13/2020)	Current Count (5/15/20)	Percent of Current Total	% Change	COVID-19 Diagnoses Rate (per 100,000 persons)*
Atlanta	1677	1685	45.2%	0.5%	381.9
South Fulton	418	424	11.4%	1.4%	445.8
Sandy Springs	312	308	8.3%	-1.3%**	292.2
Roswell	196	205	5.5%	4.6%	217.5
East Point	111	116	3.1%	4.5%	331.6
Johns Creek	111	110	2.9%	-0.9%**	131.5
Union City	103	110	2.9%	6.8%	524.8
Alpharetta	86	86	2.3%	0.0%	133.0
Milton	67	67	1.8%	0.0%	175.5
Fairburn	70	73	2.0%	4.3%	496.3
College Park	32	32	0.9%	0.0%	230.6
Palmetto	15	15	0.4%	0.0%	343.1
Hapeville	17	17	0.5%	0.0%	258.3
Mountain Park	1	1	0.0%	0.0%	160.0
Unknown	463	480	12.9%	-	-

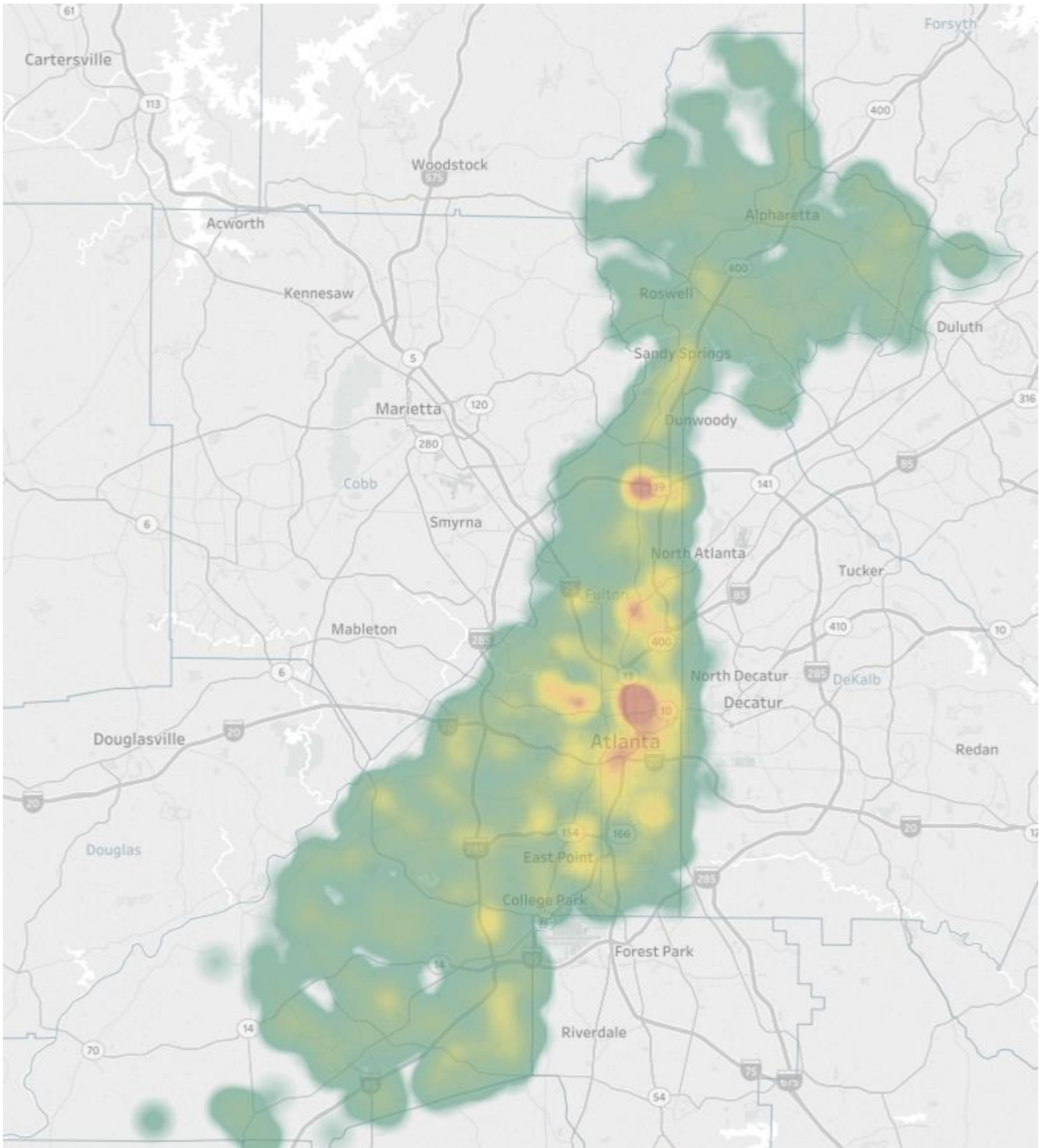
\*Population estimates from US Census Bureau used to calculate diagnoses rates. \*\* Data cleaning (either during the detailed data collection that takes place at case interviews or during the geo-coding process) may lead to reassignment of few cases from one territory to another based on their corrected addresses and these may appear as “decreases” when compared to the previous day’s count. These do not reflect errors in the data collection or analysis process but only reflect the minor day-to-day fluctuations in case counts that arise in an evolving public health database like COVID’s. **Note:** All data reported are preliminary and subject to change.

**COVID-19 Cumulative Diagnoses Rate in Fulton County by City (05/15/20)**



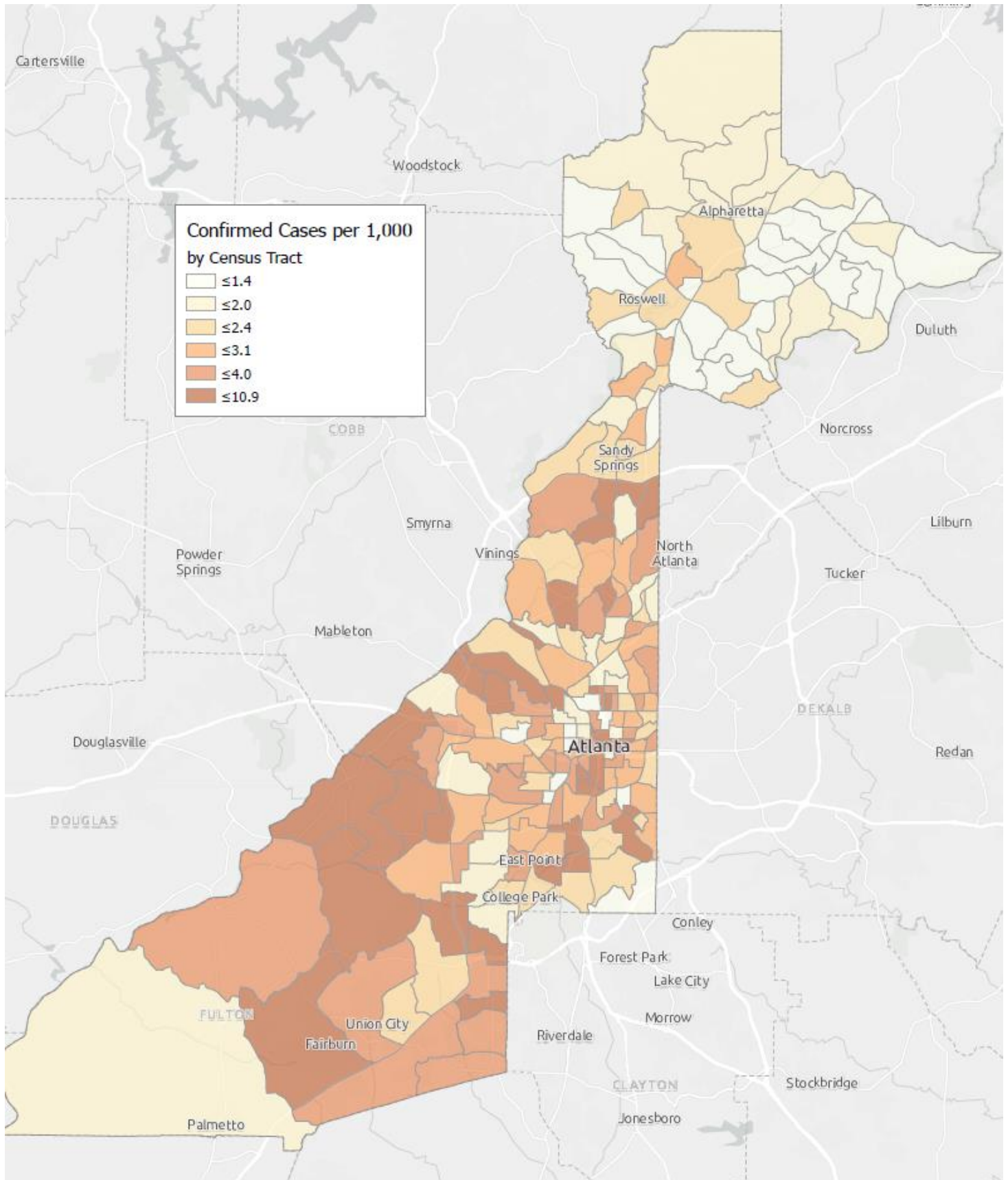
\*Rates shown are per 100,000 persons

Figure 4. Density Map of COVID-19 Cases in Fulton County (5/15/20)



NB. Data used excludes the outbreak-related cases diagnosed at long-term care facilities and reflects the current geographical distribution of COVID19 diagnoses in the general Fulton County community.

Figure 5. COVID19 Diagnosis Rates in Fulton County by Census Tract (5/15/2020)



\*Rate ( per 1000 population)

NB. Data used excludes the outbreak-related cases diagnosed at long-term care facilities and reflects the current geographical distribution of COVID19 diagnoses in



## COVID-19 CASE COUNTS BY ZIP CODE

ZIP code	Previous Count (5/13/2020)	Current Count (5/15/20)	Percent of Current Total	% Change
30331	307	309	8.3%	0.7%
30318	218	217	5.8%	-0.5%**
30349	212	214	5.7%	0.9%
30213	158	161	4.3%	1.9%
30315	122	125	3.4%	2.5%
30344	106	109	2.9%	2.8%
30311	111	112	3.0%	0.9%
30342	160	157	4.2%	-1.9%**
30314	73	73	2.0%	0.0%
30310	106	108	2.9%	1.9%
30308	77	76	2.0%	-1.3%**
30022	83	82	2.2%	-1.2%**
30327	88	85	2.3%	-3.4%**
30004	86	86	2.3%	0.0%
30309	129	127	3.4%	-1.6%**
30076	75	75	2.0%	0.0%
30291	131	141	3.8%	7.6%
30350	71	71	1.9%	0.0%
30075	111	121	3.2%	9.0%
30328	84	84	2.3%	0.0%
30316	36	38	1.0%	5.6%
30312	196	205	5.5%	4.6%
30005	47	47	1.3%	0.0%
30305	85	85	2.3%	0.0%
30306	50	48	1.3%	-4.0%**
30324	78	76	2.0%	-2.6%**
30337	30	30	0.8%	0.0%
30009	38	38	1.0%	0.0%
30313	35	34	0.9%	-2.9%**
30326	24	24	0.6%	0.0%
30097	37	37	1.0%	0.0%
30354	34	34	0.9%	0.0%
30303	30	30	0.8%	0.0%
30339	12	12	0.3%	0.0%
30268	22	21	0.6%	-4.5%**
30307	16	16	0.4%	0.0%
30319	25	25	0.7%	0.0%
30336	12	12	0.3%	0.0%
30296	10	11	0.3%	10.0%
30363	<10	<10	0.2%	-
30301	<10	<10	0.1%	-
30345	<10	<10	0.2%	-
31131	<10	<10	0.1%	-
30023	<10	<10	0.1%	-
30080	<10	<10	0.1%	-
30135	<10	<10	0.0%	-

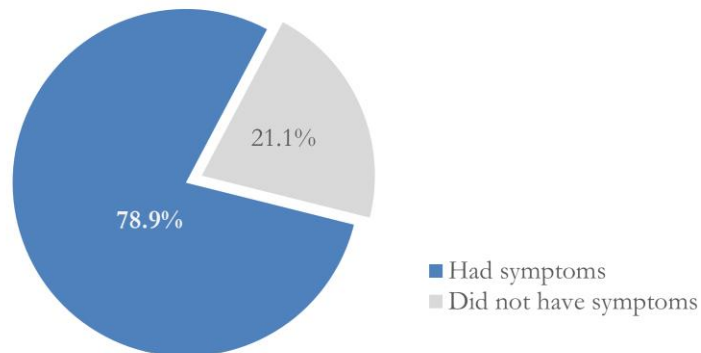
30138	<10	<10	0.0%	-
30139	<10	<10	0.0%	-
30321	<10	<10	0.1%	-
30340	<10	<10	0.1%	-
30341	15	13	0.3%	-13.3%**
30358	<10	<10	0.0%	-
30374	18	18	0.5%	0.0%
30606	<10	<10	0.0%	-
31150	<10	<10	0.0%	-
30024	<10	<10	0.0%	-
30098	<10	<10	0.0%	-
30334	<10	<10	0.1%	-
30338	<10	<10	0.1%	-
Unknown	281	302	8.1%	0.0%

\*\* Data cleaning (either during the detailed data collection that takes place at case interviews or during the geo-coding process) may lead to reassignment of few cases from one territory to another based on their corrected addresses and these may appear as “decreases” when compared to the previous day’s count.. These do not reflect errors in the data collection or analyses process but only reflect the minor day-to-day fluctuations in case counts that arise in an evolving public health database like COVID’s. **Note:** All data reported are preliminary and subject to change.

## REPORTING SYMPTOMS

People with COVID-19 have reported a wide range of symptoms ranging from mild symptoms to severe illness. Symptoms may appear 2-14 days after exposure to the virus. Symptoms reported include: cough, shortness of breath/difficulty breathing, fever, chills, repeated shaking with chills, muscle pain, headache, sore throat, new loss of taste or smell – Centers for Disease Control and Prevention (CDC) <https://www.cdc.gov/coronavirus/2019-ncov/symptoms-testing/symptoms.html>

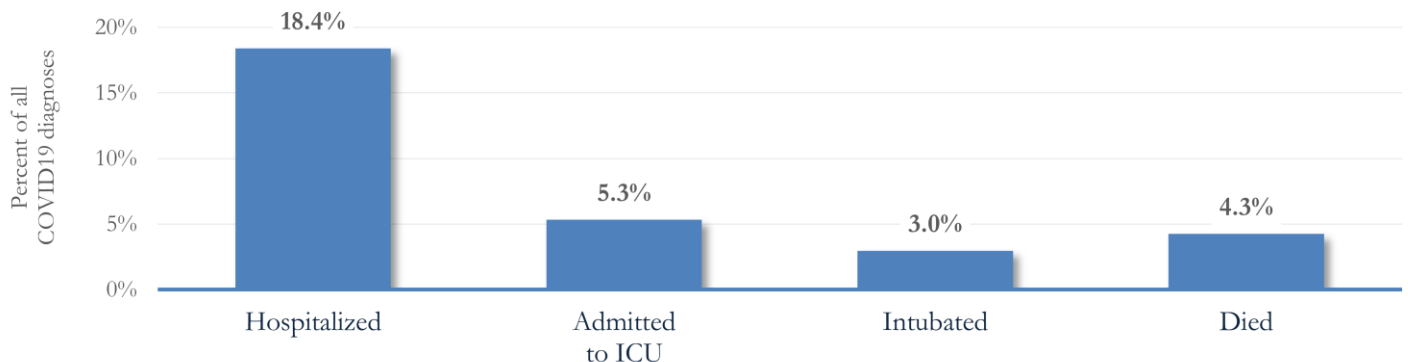
Figure 6. Proportion reporting Symptoms in Fulton County (5/15/20)



\*\*\*COVID-19 cases who have been case interviewed or had medical charts reviewed as at 5/15/20 only\*\*\*

## HOSPITALIZATIONS AND DEATHS

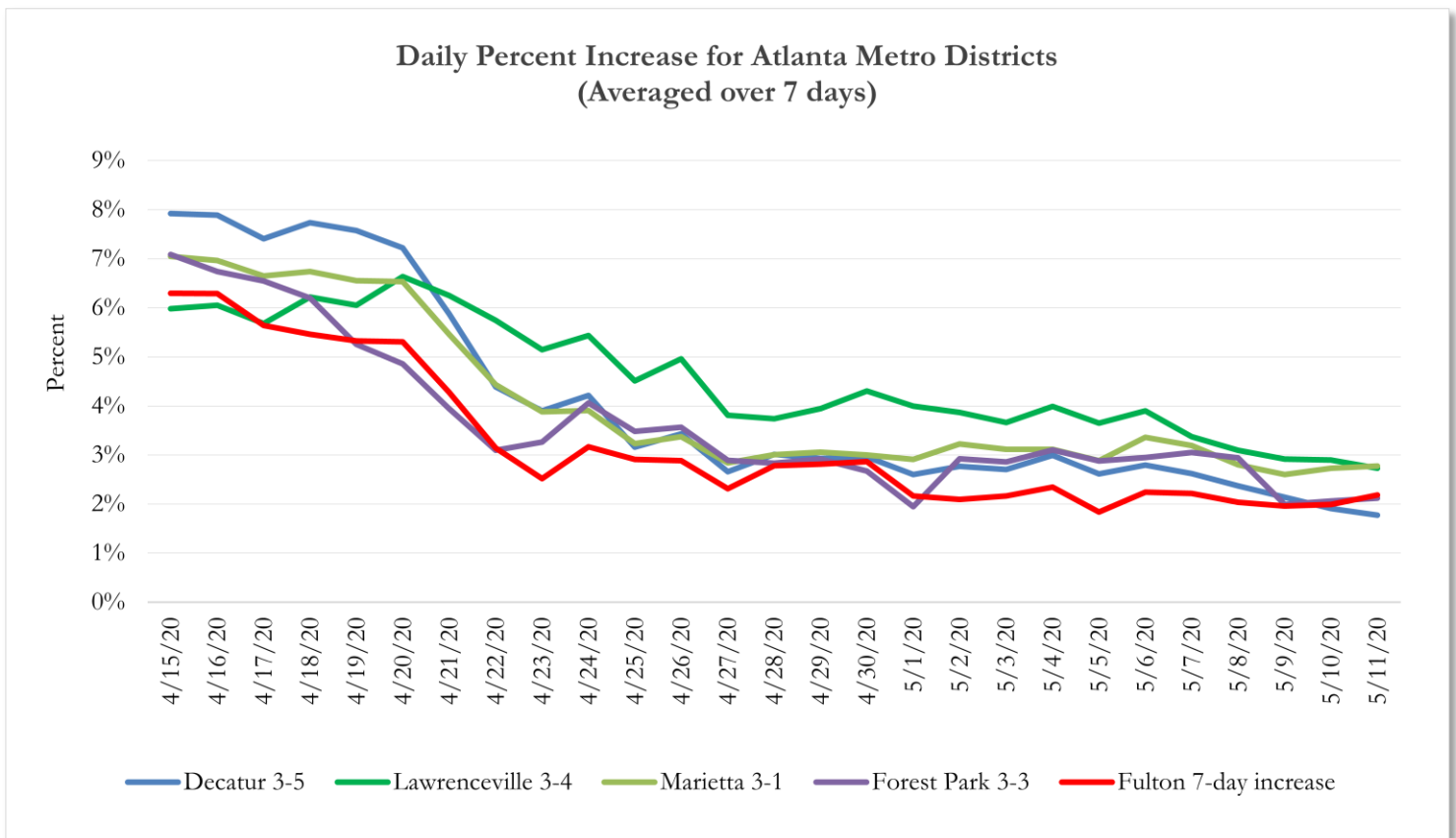
Figure 7. Hospitalizations, ICU Admissions and Deaths among COVID-19 Diagnoses in Fulton County (5/15/20)



## DEMOGRAPHIC DISTRIBUTION & MORBIDITY AND MORTALITY TRENDS

	North Fulton Cities <sup>1</sup> Count (%)	Atlanta Count (%)	South Fulton Cities <sup>2</sup> Count (%)	Unknown Count (%)	All Fulton Count (%)
Total COVID cases	777	1685	787	480	3729
<b>Gender:</b> Female	383 (49.3%)	788 (46.8%)	458 (58.2%)	255 (53.1%)	1884 (50.5%)
Male	390 (50.2%)	886 (52.6%)	324 (41.2%)	211 (44.0%)	1811 (48.6%)
Unknown	<10	11 (0.7%)	<10	14 (2.9%)	34 (0.9%)
<b>Age:</b> <15	<10	14 (0.8%)	<10	<10	36 (1.0%)
15-24	63 (8.1%)	84 (5.0%)	41 (5.2%)	29 (6.0%)	217 (5.8%)
25-34	101 (13.0%)	266 (15.8%)	81 (10.3%)	88 (18.3%)	536 (14.4%)
35-44	132 (17.0%)	266 (15.8%)	123 (15.6%)	82 (17.1%)	603 (16.2%)
45-54	157 (20.2%)	231 (13.7%)	159 (20.2%)	82 (17.1%)	629 (16.9%)
55-64	136 (17.5%)	288 (17.1%)	138 (17.5%)	74 (15.4%)	636 (17.1%)
>65	179 (23.0%)	522 (31.0%)	235 (29.9%)	112 (23.3%)	1048 (28.1%)
Unknown	<10	14 (0.8%)	<10	<10	24 (0.6%)
<b>Race:</b> Asian, NH	42 (5.4%)	20 (1.2%)	<10	<10	72 (1.9%)
Black, NH	122 (15.7%)	906 (53.8%)	592 (75.2%)	171 (35.6%)	1791 (48.0%)
White, NH	294 (37.8%)	266 (15.8%)	48 (6.1%)	71 (14.8%)	679 (18.2%)
Hispanic	80 (10.3%)	46 (2.7%)	26 (3.3%)	28 (5.8%)	180 (4.8%)
Other, NH	25 (3.2%)	26 (1.5%)	11 (1.4%)	11 (2.3%)	73 (2.0%)
Unknown	214 (27.5%)	421 (25.0%)	109 (13.9%)	190 (39.6%)	934 (25.0%)

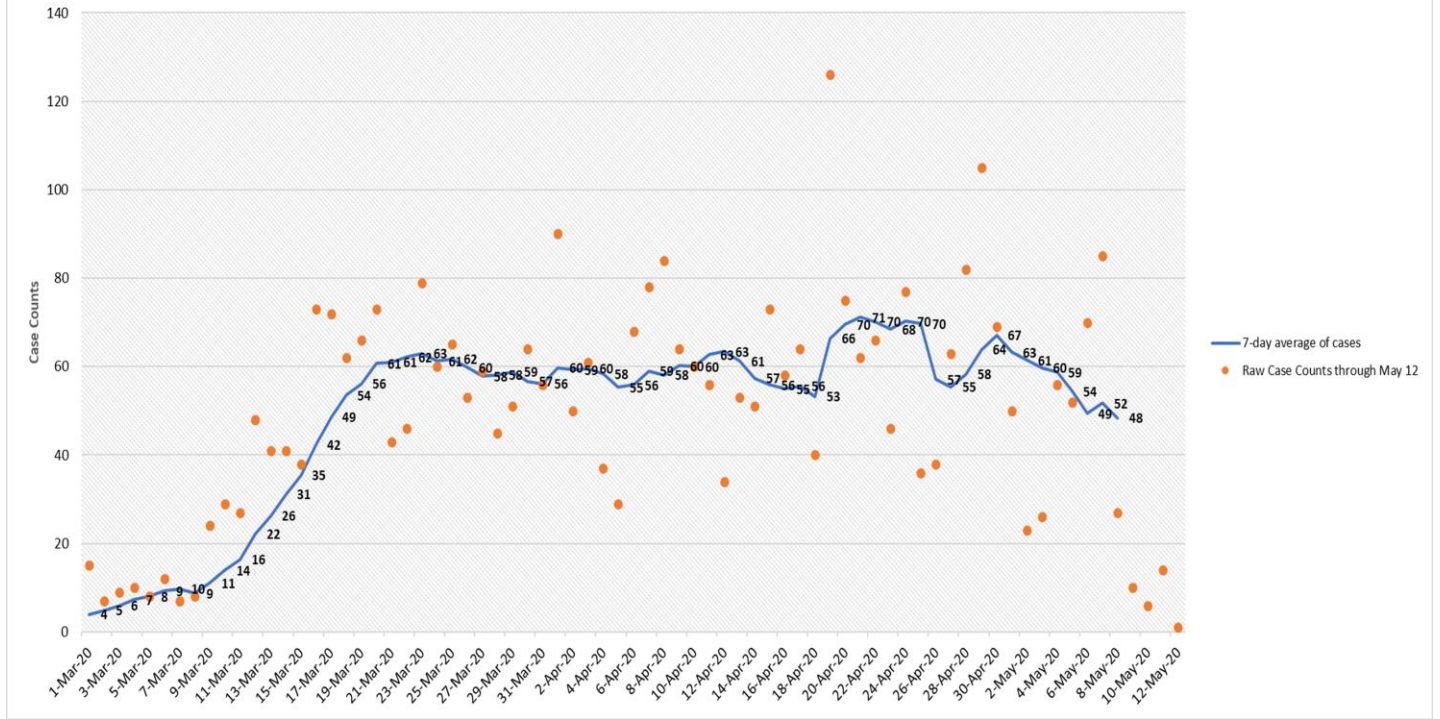
<sup>1</sup>Includes all Fulton County cities north of Atlanta metro (Alpharetta, Milton, Johns Creek, Roswell, Sandy Springs, Mountain Park ) <sup>2</sup>Includes all cities south of Atlanta (College Park, Chattahoochee Hills, East Point, Hapeville, Palmetto, South Fulton, Fairburn, Union City). **Note:** All data reported are preliminary and subject to change.



\*Chart to be updated weekly.

### New COVID-19 Cases in Fulton County Daily (Averaged over 7 days)

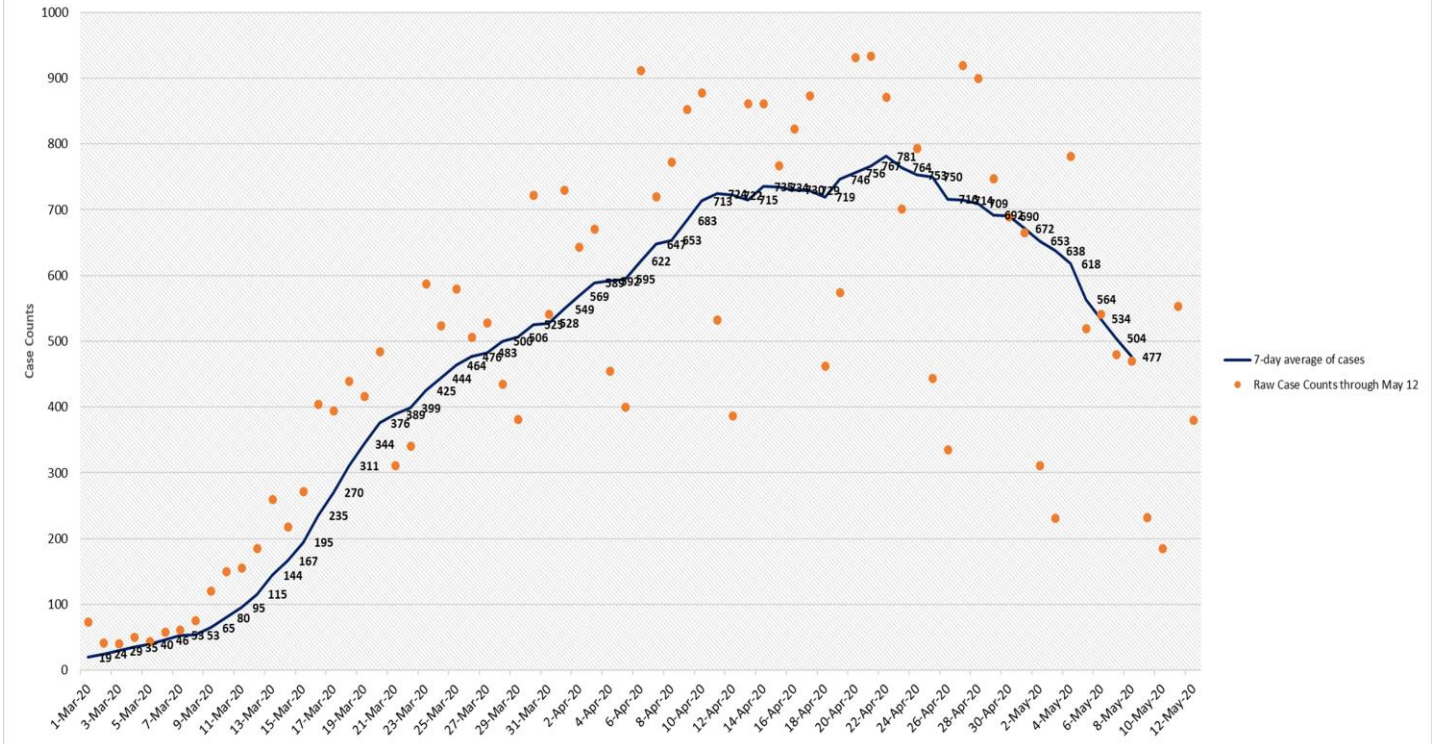
March 01, 2020 to May 08, 2020



\*Date is the earliest date when comparing the date of symptom onset, date of positive sample collection, and date of report for each PUI. 0 PUIs had an invalid or unknown date.

### New COVID-19 Cases in Georgia Daily (Averaged over 7 days)

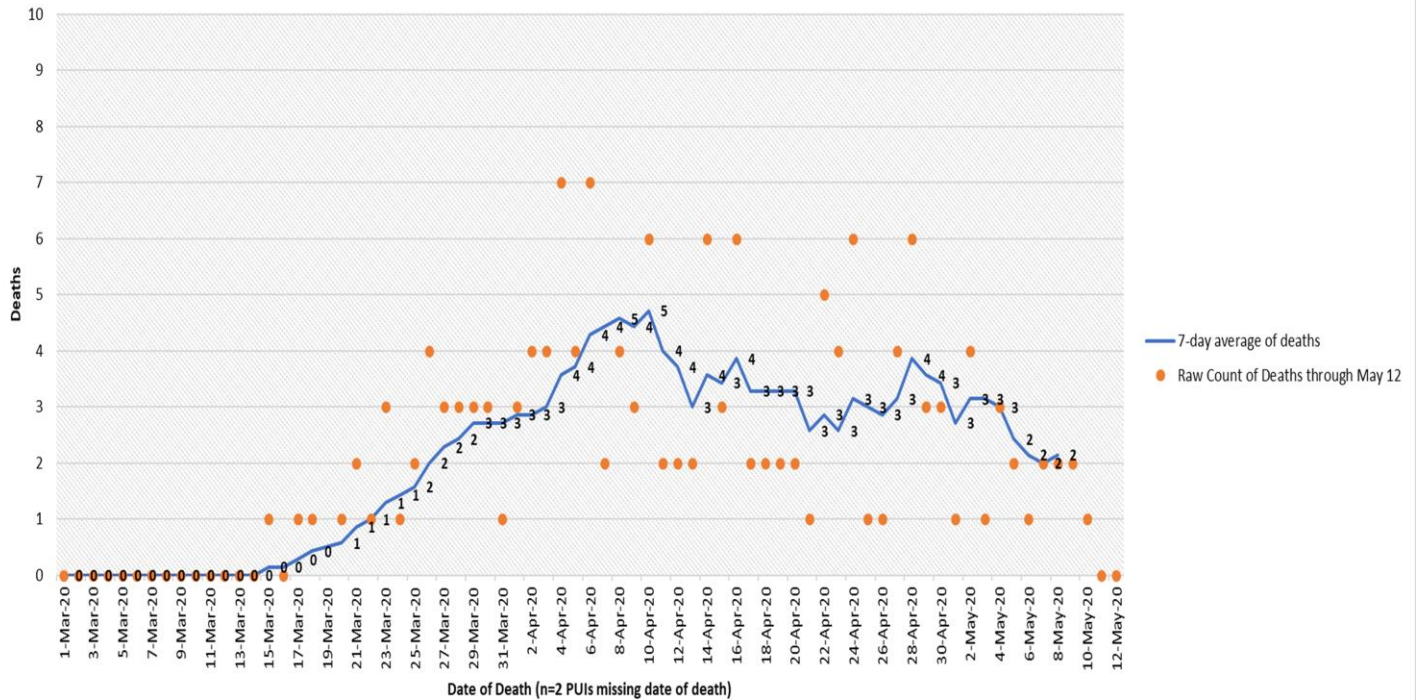
March 01, 2020 to May 08, 2020





### COVID-19 Deaths in Fulton County Daily (Averaged over 7 days)

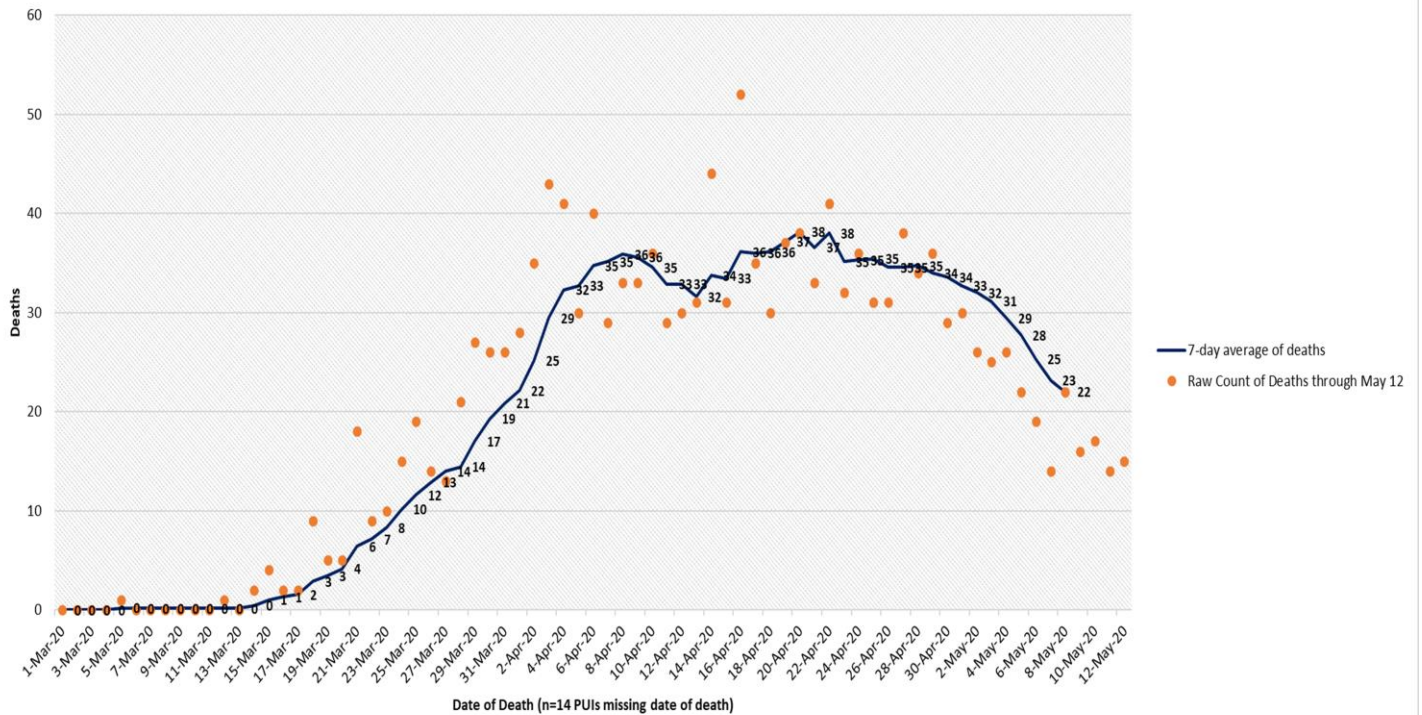
March 01, 2020 to May 08, 2020



\*There were no deaths reported in SENDSS prior to March 01, 2020.

### COVID-19 Deaths in Georgia Daily (Averaged over 7 days)

March 01, 2020 to May 08, 2020



\*There were no deaths reported in SENDSS prior to March 01, 2020.