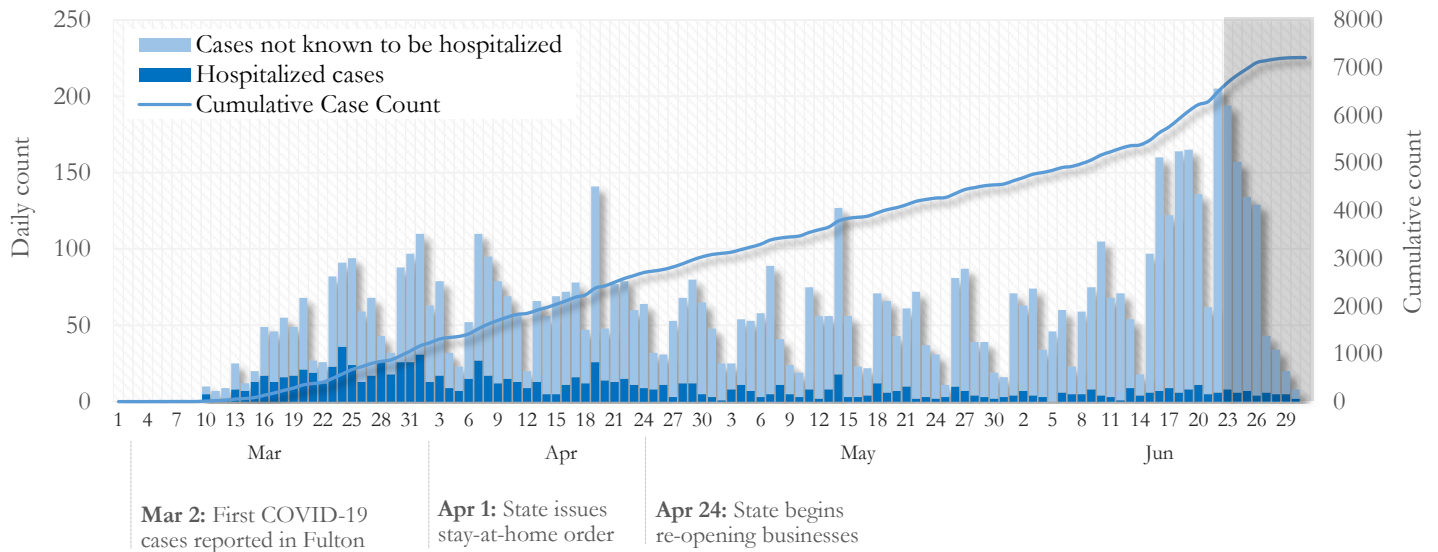


## SUMMARY

- As of June 29, 2020, Fulton has recorded **7,211** cases of the 2019 novel coronavirus (COVID-19) and **312** deaths.
- Of 1,778 **new diagnoses** made between June 10 and June 23, the central portion of the county (Atlanta metro) accounted for 46% while the northern and southern parts accounted for 29% and 17% respectively.
- By city, **new** COVID-19 diagnoses rates range from 81.3 per 100,000 persons (Johns Creek) to 410.3 per 100,000 persons (Hapeville). [Fulton County Diagnoses Rates (per 100,000 persons): Cumulative – 677.8; New – 167.1]. See map showing incident case rate by ZIP code on Pg.4.
- Among all persons diagnosed with COVID-19 in Fulton County, 15.1% required hospitalization and 4.3% died.
- Residents and staff of long-term care facilities account for 17% of COVID-19 diagnoses and 57% of COVID-19 deaths in Fulton County (7/01/20).

### Daily and Cumulative COVID-19 diagnoses in Fulton County, GA (7/01/20)



\*Counts shown reflect the number of confirmed cases as of 9:00am on 7/01/20 using the date of first positive sample collection. Where date of sample collection was not available or missing, the date of report creation in GA SENDSS was used instead. **Note:** All data reported are preliminary and subject to change. Delays in data reporting may cause changes in data counts, particularly in the shaded portion.

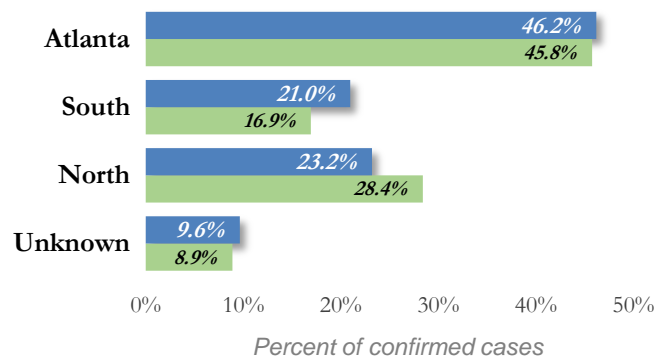
## DISTRIBUTION OF COVID-19 DIAGNOSES BY REGION

**New cases:** 45% of the new COVID-19 cases diagnosed in the past 2 weeks occurred in Atlanta while 30% and 17% occurred in the Northern and Southern regions of the county respectively.

Fulton Region	% Cumulative count	% New cases*
Atlanta	46.2%	45.8%
North <sup>1</sup>	23.2%	28.4%
South <sup>2</sup>	21.0%	16.9%
Unincorporated/Unknown	9.6%	8.9%

<sup>1</sup>Includes all Fulton County cities north of Atlanta metro (Alpharetta, Milton, Johns Creek, Roswell, Sandy Springs, Mountain Park) | <sup>2</sup>Includes all cities south of Atlanta (College Park, Chattahoochee Hills, East Point, Hapeville, Palmetto, South Fulton, Fairburn, and Union City) \***New cases:** Cases diagnosed in the past 2 weeks only (between 6/8/20 – 6/22/20).

### Distribution of COVID 19 cases by Region (5/08/20)

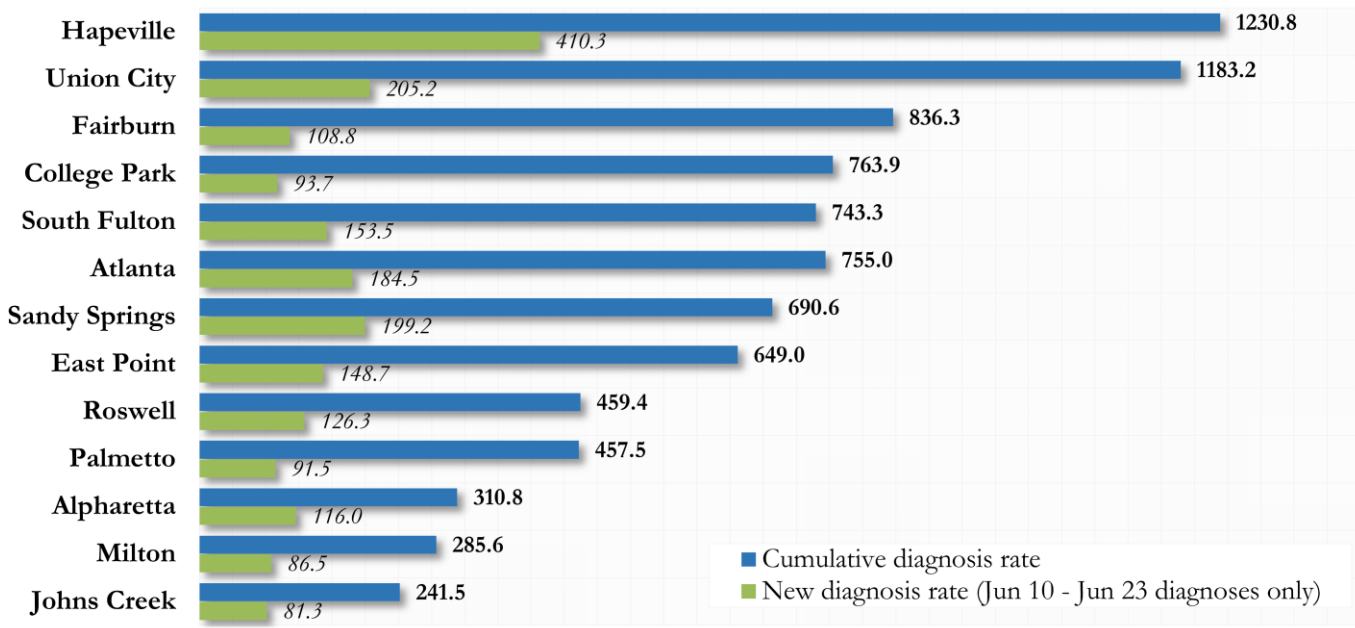


**COVID-19 CASE COUNTS AND RATES BY CITY**

	Prior (6/26/20)	Current Total (7/01/20)			New Cases (Period: 5/25/20 – 6/23/20) <sup>1</sup>			
	Count	Count	%	Cum. Rate <sup>2</sup>	Ist 14 d. (5/27–6/09)	Last 14 d. (6/10-6/23)	% change <sup>3</sup>	Rate <sup>4</sup> (last 14 d.)
Atlanta	3043	3331	46.2%	755.0	303	814	↑ 168.6%	184.5
South Fulton	661	707	9.8%	743.3	56	146	↑ 160.7%	153.5
Sandy Springs	670	728	10.1%	690.6	96	210	↑ 118.8%	199.2
Roswell	401	433	6.0%	459.4	58	119	↑ 105.2%	126.3
East Point	208	227	3.1%	649.0	15	52	↑ 246.7%	148.7
Johns Creek	183	202	2.8%	241.5	19	68	↑ 257.9%	81.3
Union City	236	248	3.4%	1183.2	15	43	↑ 186.7%	205.2
Alpharetta	185	201	2.8%	310.8	18	75	↑ 316.7%	116.0
Milton	96	109	1.5%	285.6	12	33	↑ 175.0%	86.5
Fairburn	117	123	1.7%	836.3	21	16	↓ 23.8%	108.8
College Park	102	106	1.5%	763.9	<10	13	↑ 85.7%	93.7
Palmetto	18	20	0.3%	457.5	<10	<10	↑ 300.0%	91.5
Hapeville	76	81	1.1%	1230.8	22	27	↑ 22.7%	410.3
Mountain Park	0	0	0.0%	-	0	0	-	0
Unknown	647	695	9.6%	-	61	153	-	-

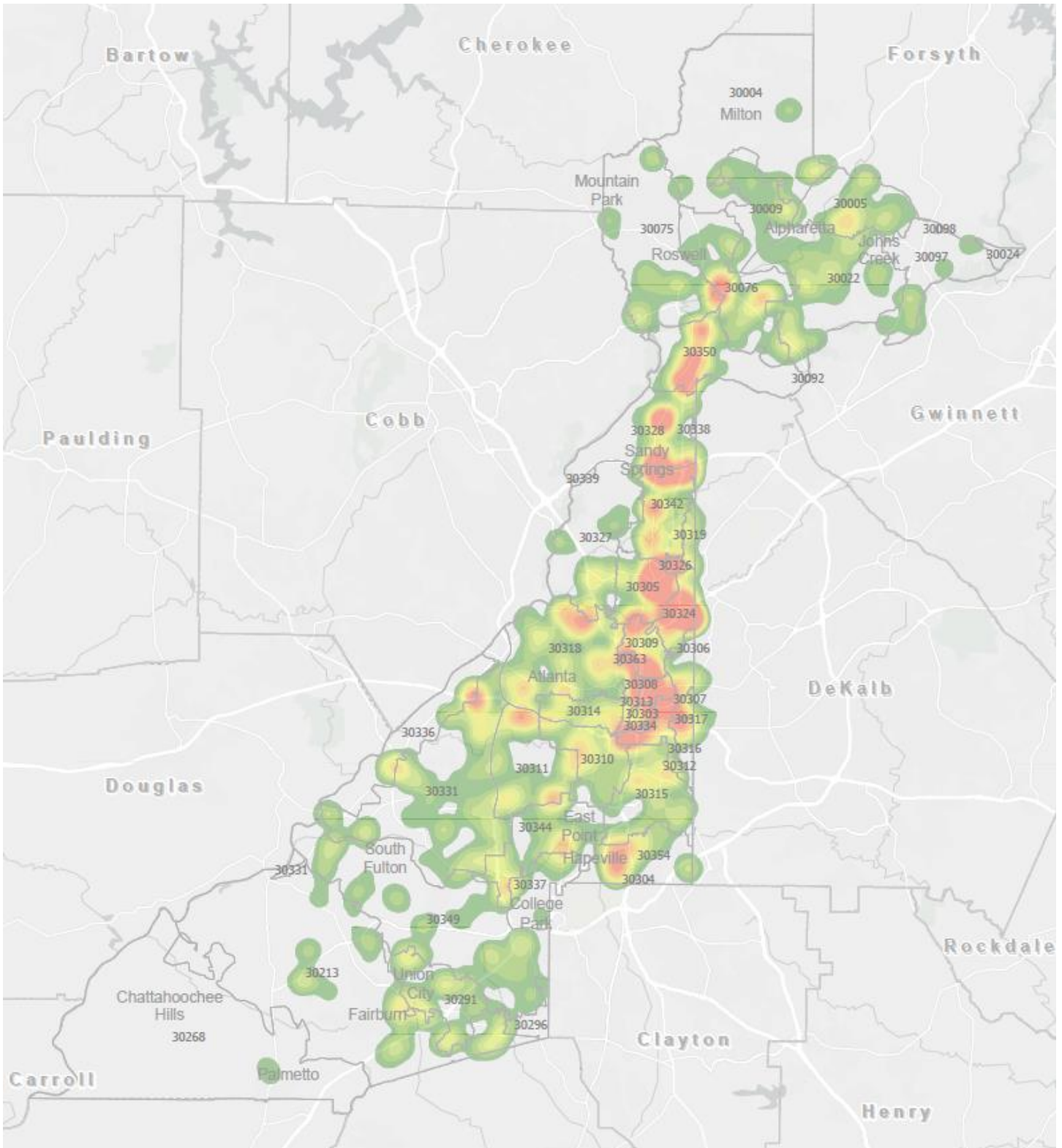
<sup>1</sup>**New cases:** Cases diagnosed in most recent 28 days (based on reported dates of positive sample collection). To allow for lag in reporting results of new diagnoses from samples collected in the most recent week, data used for incident diagnoses analyses were moved back by one week. <sup>2</sup>**Cumulative diagnosis rate:** Population estimates from US Census Bureau used to calculate cumulative diagnoses rate. All rates shown are per 100,000 persons. <sup>3</sup>**Percent change:** These reflect the percentage increase or decrease in new diagnoses between the 14 days preceding the most recent 7 days and the 14 days preceding that. Changes in cities with less than 10 cases in both 2 week intervals are not reported. <sup>4</sup>**Incidence Rate:** Rate of new diagnoses in the recent past 14 days. **\*\*Data cleaning** (either during case interviews or address geo-coding) may lead to reassignment of few cases from one territory to another based on their corrected addresses. These may appear as “decreases” when compared to the previous day’s count. These do not reflect errors in the data collection or analysis process but only reflect the minor day-to-day fluctuations in case counts that arise in an evolving public health database like COVID’s. **Note:** Sharp increases in territorial COVID case counts often reflect new cases diagnosed at long term care facilities located in those territories during facility-wide /mass screening events **All data reported are preliminary and subject to change.**

**Fig. 3. Incident & Cumulative Diagnoses Rates for COVID-19 by City (7/01/20)**



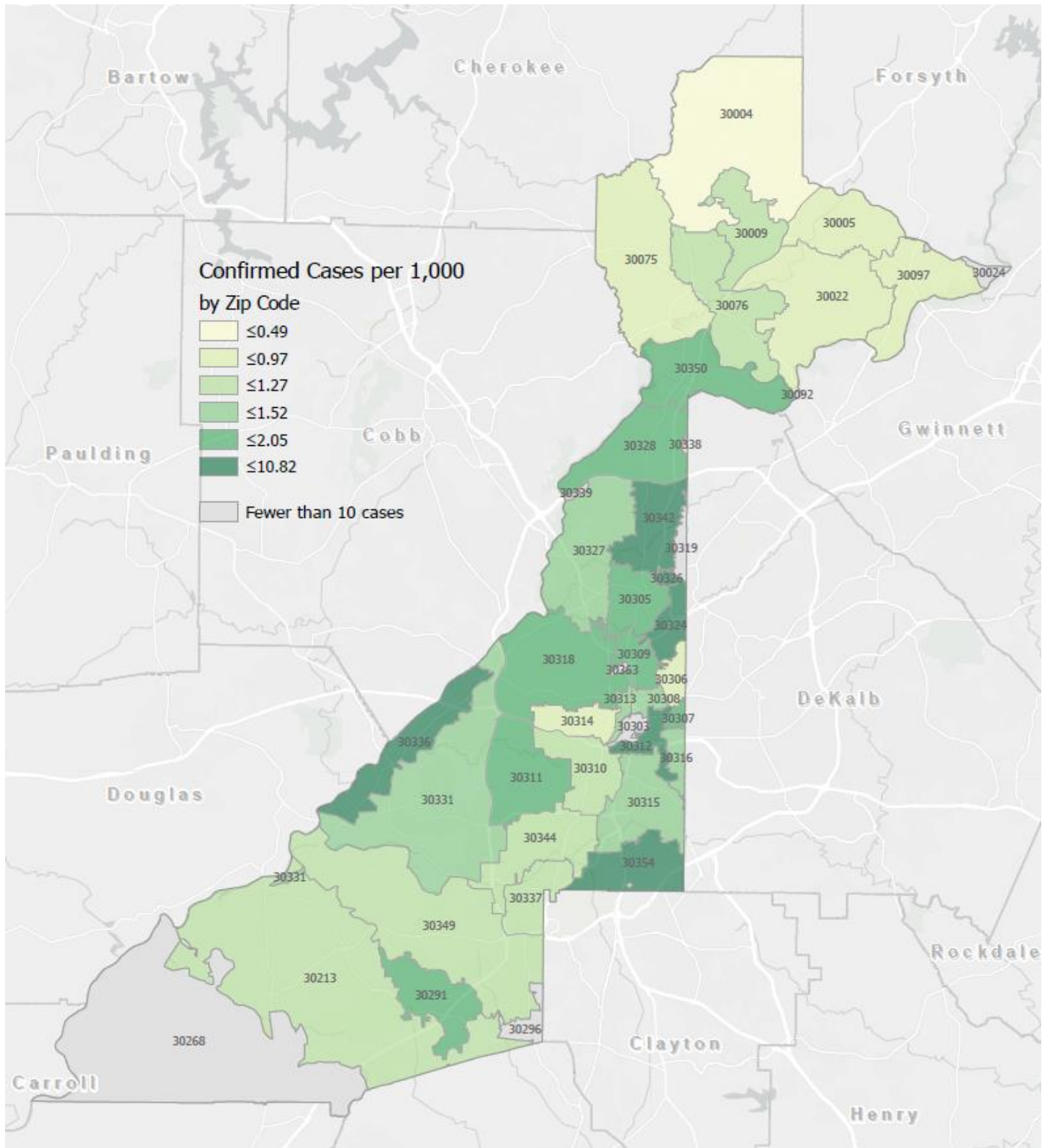
\*Rates shown are per 100,000 persons | **Note:** Mass testing in specific locations (e.g. long term care facilities) may cause sharp increases in the cumulative rate of COVID-19 diagnosis in those territories. All data shown are preliminary and are subject to change as testing results get updated.

Fig. 4. Density Map – New COVID 19 Diagnoses (Jun 10 – Jun 24, 2020) in Fulton County



NB. **New COVID-19 cases:** Cases diagnosed in most recent 14 days (based on reported dates of positive sample collection). To allow for lag in reporting results of positive cases from samples collected in the immediate past 7 days, data used for incident diagnoses analyses are moved back by one week. Map reflects new COVID-19 cases diagnosed between June 8<sup>th</sup> and Jun 22<sup>nd</sup>, 2020 across Fulton County.

Fig. 5. New COVID-19 Diagnoses Rates by ZIP Code (Jun 10 – Jun 24, 2020)



\*Rates shown are per 1,000 populations.

- **New COVID-19 cases:** Cases diagnosed in most recent 14 days (based on reported dates of positive sample collection). To allow for lag in reporting results of positive cases from samples collected in the immediate past 7 days, data used for incident diagnoses analyses are moved back by one week.

- Data used excludes outbreak-related cases at long-term care facilities and Map shown reflects only the new non-LTCF cases diagnosed between Jun 8<sup>th</sup> and Jun 22<sup>nd</sup> 2020.



## COVID-19 CASE COUNTS BY ZIP CODE

	Prior (6/26/20)	Current Total (7/01/20)		New Cases (Period: 5/27/20 – 6/23/20) <sup>1</sup>		
	Count	Count	%	1st 14 days (May 27 – Jun 9)	Last 14 d. (May 10 – Jun 23)	% change <sup>2</sup>
<b>All Fulton</b>	<b>6,643</b>	<b>7,211</b>	<b>100.0%</b>	<b>705</b>	<b>1,778</b>	<b>↑ 152.2%</b>
30331	484	504	7.0%	32	94	↑ 193.8%
30318	409	448	6.2%	38	109	↑ 186.8%
30349	358	392	5.4%	40	73	↑ 82.5%
30213	267	287	4.0%	34	58	↑ 70.6%
30315	205	219	3.0%	13	47	↑ 261.5%
30344	195	213	3.0%	11	51	↑ 363.6%
30311	201	223	3.1%	11	64	↑ 481.8%
30342	323	347	4.8%	38	84	↑ 121.1%
30314	228	238	3.3%	10	30	↑ 200.0%
30310	215	234	3.2%	35	47	↑ 34.3%
30308	107	119	1.7%	<10	35	↑ 1066.7%
30022	181	196	2.7%	24	64	↑ 166.7%
30327	134	146	2.0%	<10	33	↑ 312.5%
30004	143	159	2.2%	18	48	↑ 166.7%
30309	188	206	2.9%	17	57	↑ 235.3%
30076	157	168	2.3%	19	60	↑ 215.8%
30291	260	276	3.8%	13	51	↑ 292.3%
30350	187	197	2.7%	38	63	↑ 65.8%
30075	221	238	3.3%	29	61	↑ 110.3%
30328	171	195	2.7%	23	74	↑ 221.7%
30316	67	75	1.0%	<10	16	↑ 77.8%
30312	274	293	4.1%	10	48	↑ 380.0%
30005	85	98	1.4%	<10	45	↑ 542.9%
30305	211	231	3.2%	49	66	↑ 34.7%
30306	57	66	0.9%	<10	13	↑ 85.7%
30324	221	251	3.5%	47	87	↑ 85.1%
30337	100	103	1.4%	<10	14	↑ 133.3%
30009	72	82	1.1%	11	23	↑ 109.1%
30313	50	54	0.7%	<10	14	↑ 600.0%
30326	47	52	0.7%	<10	18	↑ 260.0%
30097	59	63	0.9%	<10	21	↑ 950.0%
30354	114	128	1.8%	27	40	↑ 48.1%
30303	44	57	0.8%	<10	18	↑ 200.0%
30339	19	21	0.3%	<10	<10	-
30268	25	27	0.4%	<10	<10	-
30307	28	29	0.4%	<10	10	↑ 900.0%
30319	46	56	0.8%	<10	21	↑ 320.0%
30336	32	34	0.5%	<10	12	↑ 500.0%
30296	13	15	0.2%	<10	<10	-
30363	12	13	0.2%	<10	<10	-
30301	<10	<10	<0.1%	<10	0	↓ 100.0%
30345	17	17	0.2%	<10	<10	-
31131	<10	<10	<0.1%	0	0	↔
30023	<10	<10	<0.1%	0	0	↔
30080	<10	<10	<0.1%	0	0	↔
30135	<10	<10	<0.1%	0	0	↔
30138	<10	<10	<0.1%	0	0	↔
30139	-	-	-	0	0	↔
30321	<10	<10	<0.1%	<10	<10	-
30340	22	23	0.3%	<10	11	↑ 175.0%

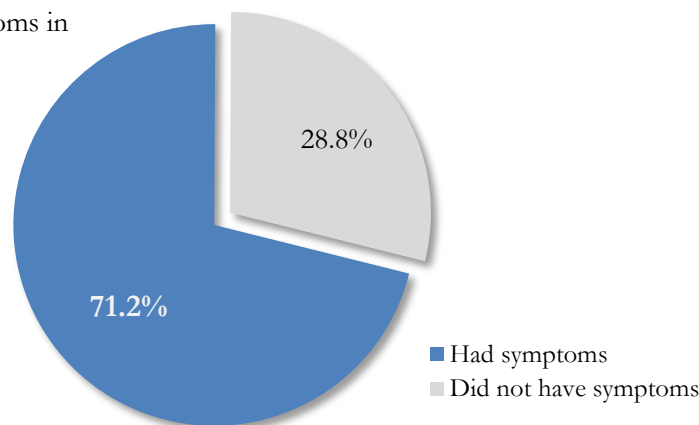
30341	18	25	0.3%	<10	11	↑ 450.0%
30358	<10	<10	<0.1%	0	0	↔
30374	21	21	0.3%	<10	<10	-
30606	<10	<10	<0.1%	0	0	↔
31150	<10	<10	<0.1%	0	0	↔
30024	<10	<10	<0.1%	0	<10	-
30098	-	-	-	0	0	↔
30334	<10	<10	<0.1%	<10	0	↓ 100.0%
30338	<10	<10	<0.1%	<10	<10	-
Unknown	327	340	4.7%	35	58	-

<sup>1</sup>**New cases:** Cases diagnosed in most recent 28 days (based on reported dates of positive sample collection). To allow for lag in reporting results of new diagnoses from samples collected in the most recent week, data used for incident diagnoses analyses were moved back by one week. <sup>2</sup>**Percent change:** These reflect the percentage increase or decrease of new diagnoses between the 14 days preceding the past 7 days and the 14 days preceding that. Changes in ZIP codes with less than 10 cases in **both** 2 week intervals are not reported\*\*Data cleaning (either during case interviews or address geo-coding) may lead to reassignment of few cases from one territory to another based on their corrected addresses. These may appear as “decreases” when compared to the previous day’s count. These do not reflect errors in the data collection or analysis process but only reflect the minor day-to-day fluctuations in case counts that arise in an evolving public health database like COVID’s. **Note:** Sharp increases in territorial COVID case counts often reflect new cases diagnosed at long term care facilities located in those territories during facility-wide /mass screening events **All data reported are preliminary and subject to change.**

### REPORTING SYMPTOMS AMONG PERSONS DIAGNOSED WITH COVID-19 IN FULTON

People with COVID-19 have reported a wide range of symptoms ranging from mild symptoms to severe illness. Symptoms may appear 2-14 days after exposure to the virus. Symptoms reported include: cough, shortness of breath/difficulty breathing, fever, chills, repeated shaking with chills, muscle pain, headache, sore throat, new loss of taste or smell – Centers for Disease Control and Prevention (CDC)  
<https://www.cdc.gov/coronavirus/2019-ncov/symptoms-testing/symptoms.html>

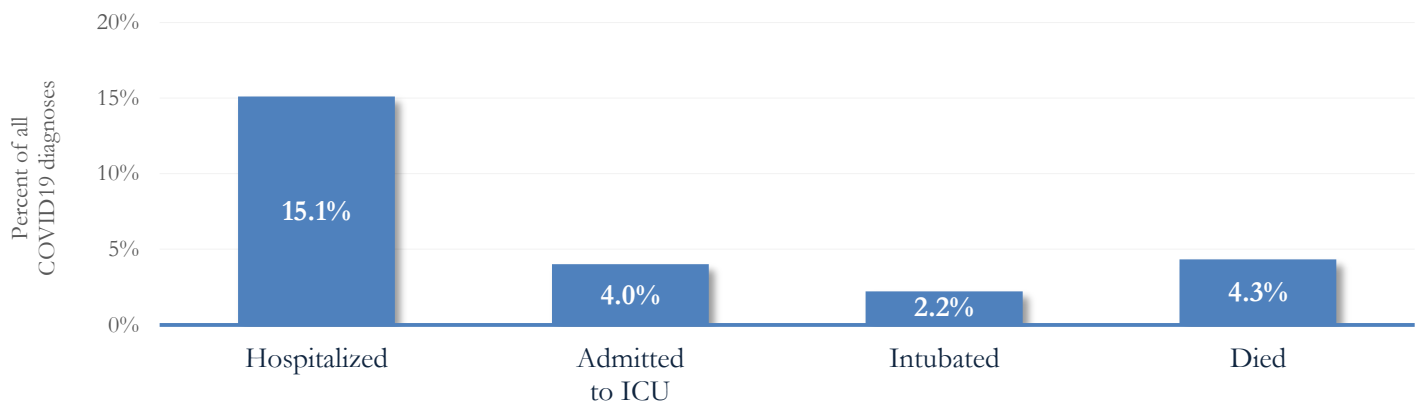
Fig. 6. Proportion reporting Symptoms in Fulton County (7/01/20)



\*\*\*COVID-19 cases who have been case interviewed or had medical charts reviewed as at 7/01/20 only\*\*\*

### COVID-19 HOSPITALIZATIONS, ICU ADMISSIONS AND DEATHS IN FULTON

Fig. 7. Hospitalizations, ICU Admissions and Deaths among COVID-19 Diagnoses in Fulton County (7/01/20)



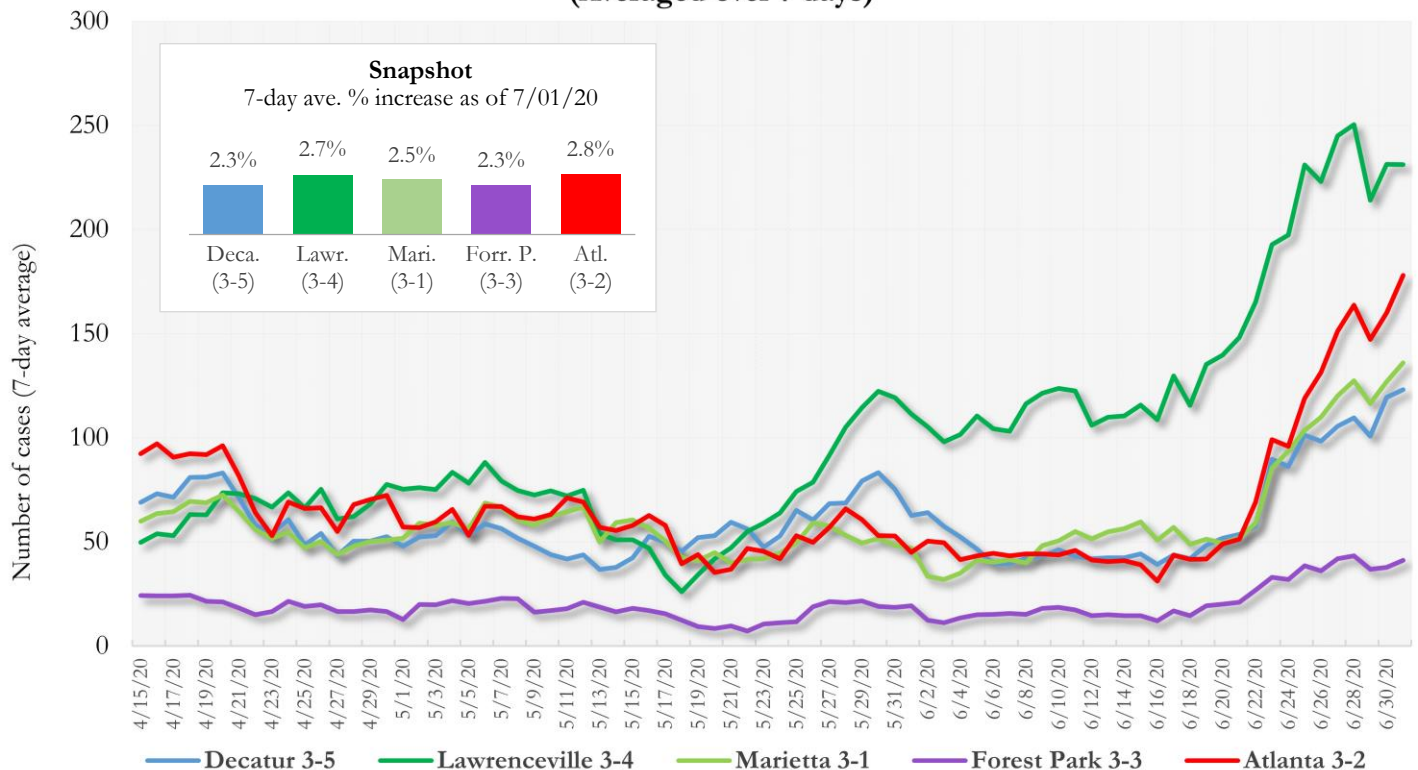
**DEMOGRAPHIC DISTRIBUTIONS – COVID 19 DIAGNOSES AND DEATHS IN FULTON**

		COVID-19 Diagnoses (n=7,211)	COVID-19 Deaths (n=312)
		Count (%)	Count (%)
<b>Gender:</b>	Female	3636 (50.4%)	143 (45.8%)
	Male	3398 (47.1%)	169 (54.2%)
	Unknown/Missing	177 (2.5%)	
<b>Age:</b>	0-9	97 (1.3%)	
	10-19	309 (4.3%)	<10 (0.3%)
	20-29	1414 (19.6%)	<10 (0.3%)
	30-39	1325 (18.4%)	<10 (1.3%)
	40-49	1084 (15.0%)	<10 (2.9%)
	50-59	1006 (14.0%)	20 (6.4%)
	60-69	844 (11.7%)	61 (19.6%)
	≥70	1108 (15.4%)	216 (69.2%)
Unknown/Missing		24 (0.3%)	
<b>Race:</b>	Asian, NH	120 (1.7%)	<10 (0.6%)
	Black, NH	3068 (42.5%)	229 (73.4%)
	White, NH	1297 (18.0%)	67 (21.5%)
	Hispanic	756 (10.5%)	10 (3.2%)
	Other, NH	162 (2.2%)	<10 (1.0%)
	Unknown/Missing	1808 (25.1%)	<10 (0.3%)

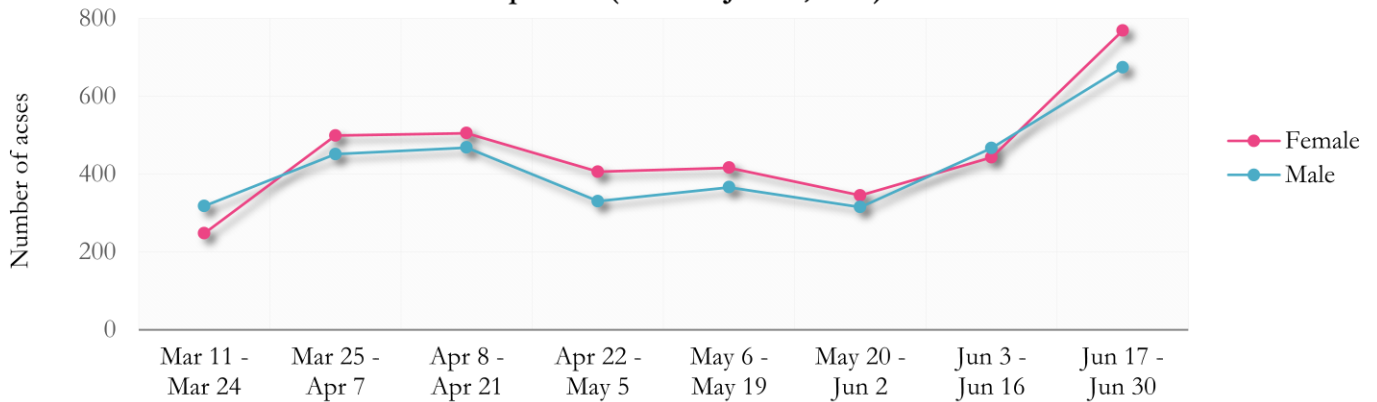
*Note: All data reported are preliminary and subject to change.*

**MORBIDITY AND MORTALITY TRENDS**

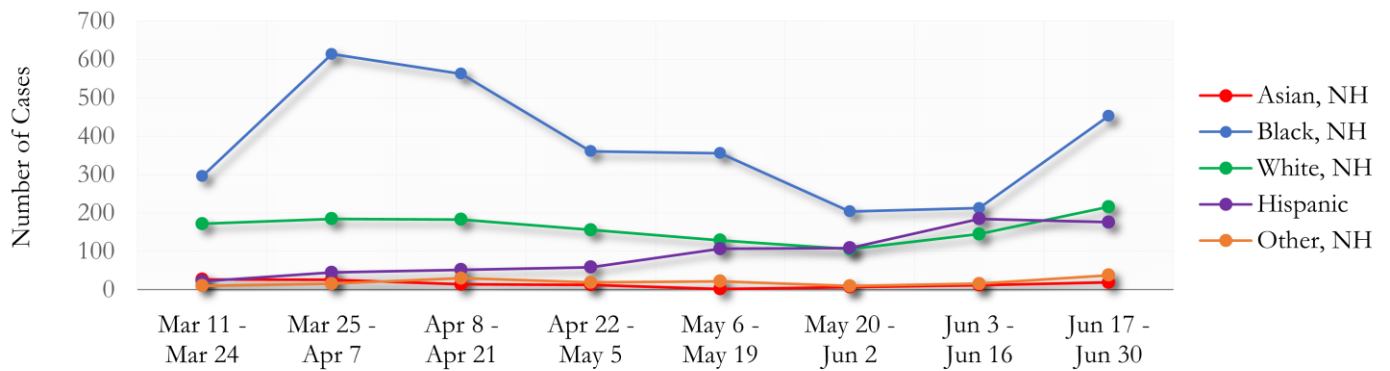
**Fig. 8. Daily Case Counts for Atlanta Metro Districts (Averaged over 7 days)**



**Fig. 9. Trends in Gender distribution of COVID -19 Diagnoses in Fulton County by 14-day periods (Mar 11 - Jun 30, 2020)**

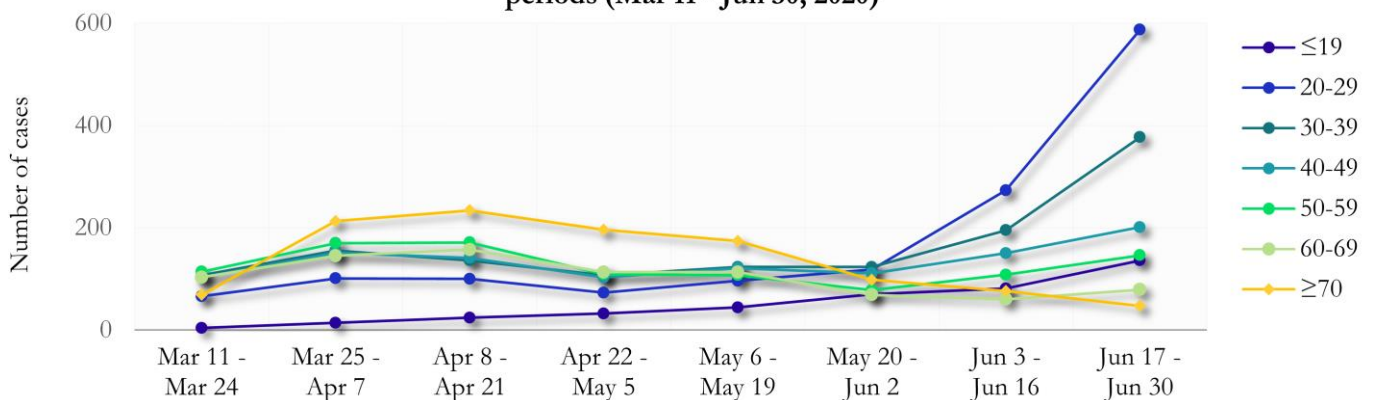


**Fig. 10. Trends in Racial distribution of COVID -19 Diagnoses in Fulton County by 14-day periods (Mar 11 - Jun 30, 2020)**



Nearly half of the cases diagnosed between Jun 17 and Jun 30 are missing race and ethnicity data in the surveillance database. Of the cases who have race and ethnicity reported, majority are Black non-Hispanic, followed by similar number of cases reporting White non-Hispanic and Hispanic race.

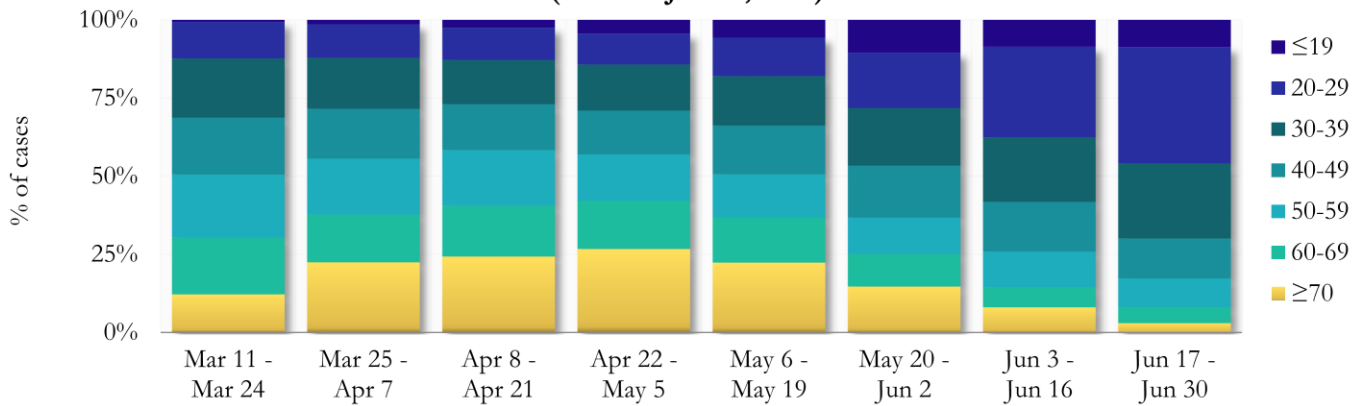
**Fig. 11. Trends in Age distribution of COVID -19 Diagnoses in Fulton County by 14-day periods (Mar 11 - Jun 30, 2020)**



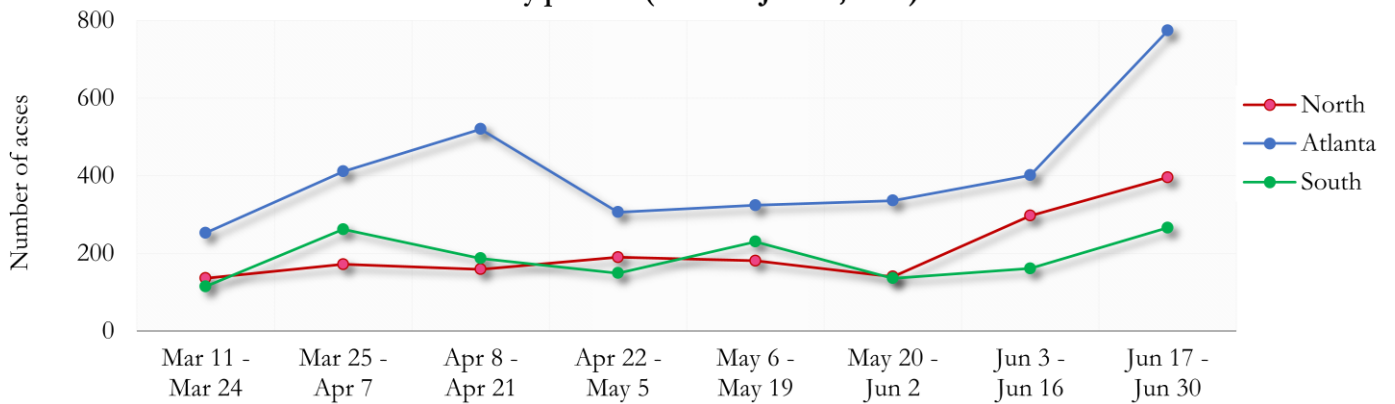
Early on in the epidemic, March-May large proportions of reported cases were aged 60 and older. However, starting in June, a much higher proportion of cases were aged between 20-29 years.



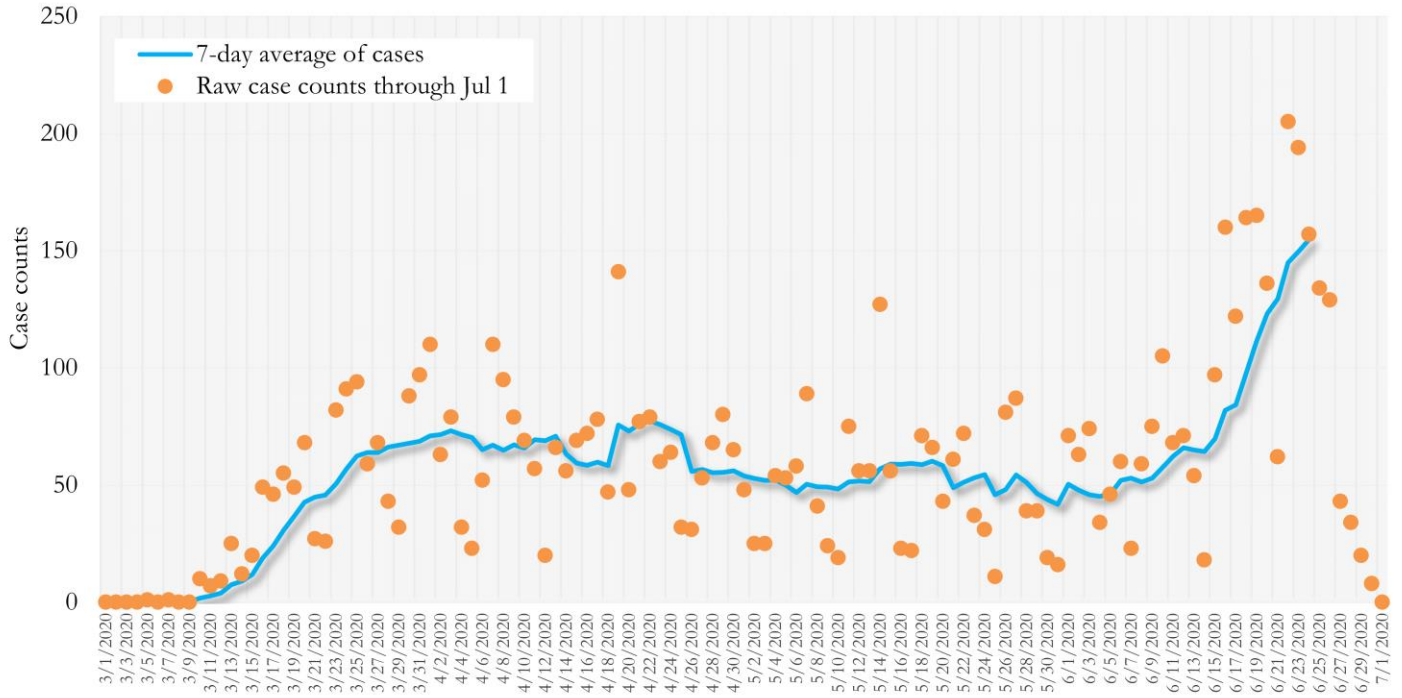
**Fig. 12. Proportion of COVID -19 Cases in Fulton County in 14-day periods by Age (Mar 11 - Jun 30, 2020)**



**Fig. 13. Trends in Geographic distribution of COVID -19 Diagnoses in Fulton County by 14-day periods (Mar 11 - Jun 30, 2020)**

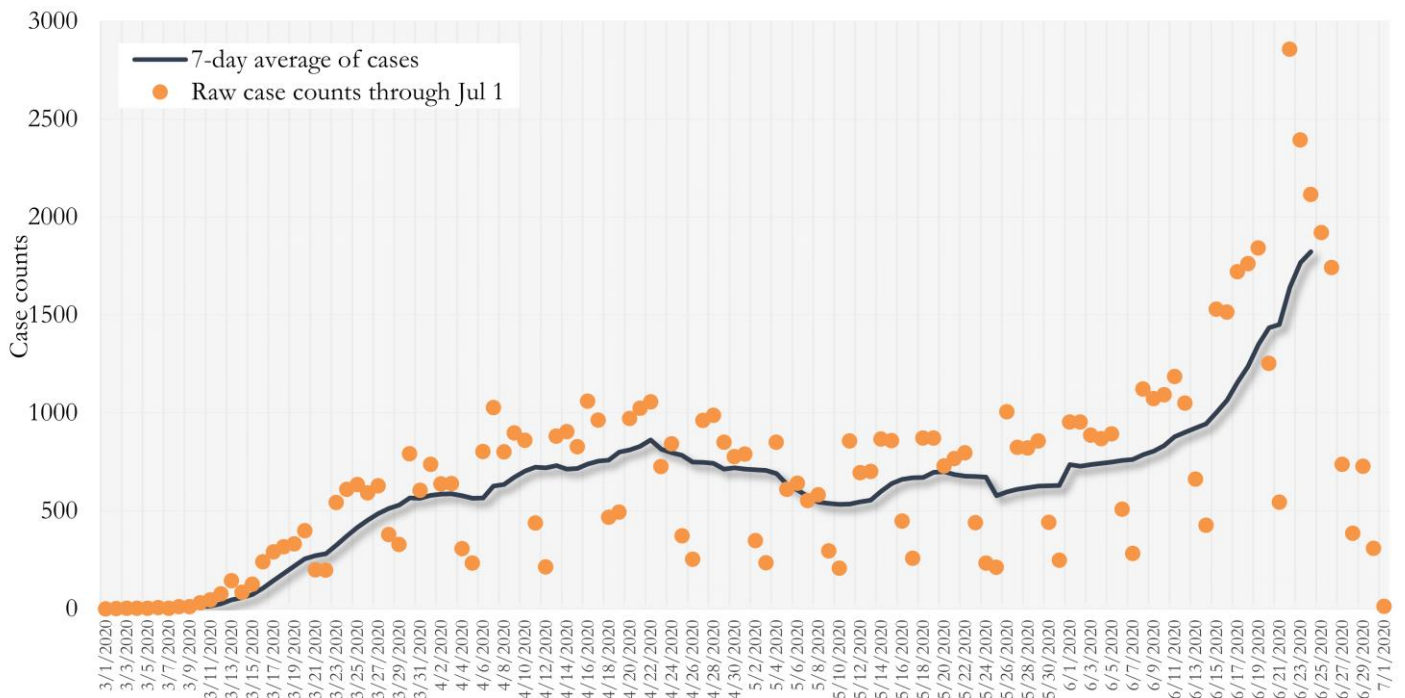


**Fig. 14. New COVID-19 Cases in Fulton County Daily (Averaged over 7 days)  
Mar 01, 2020 - Jun 24, 2020**



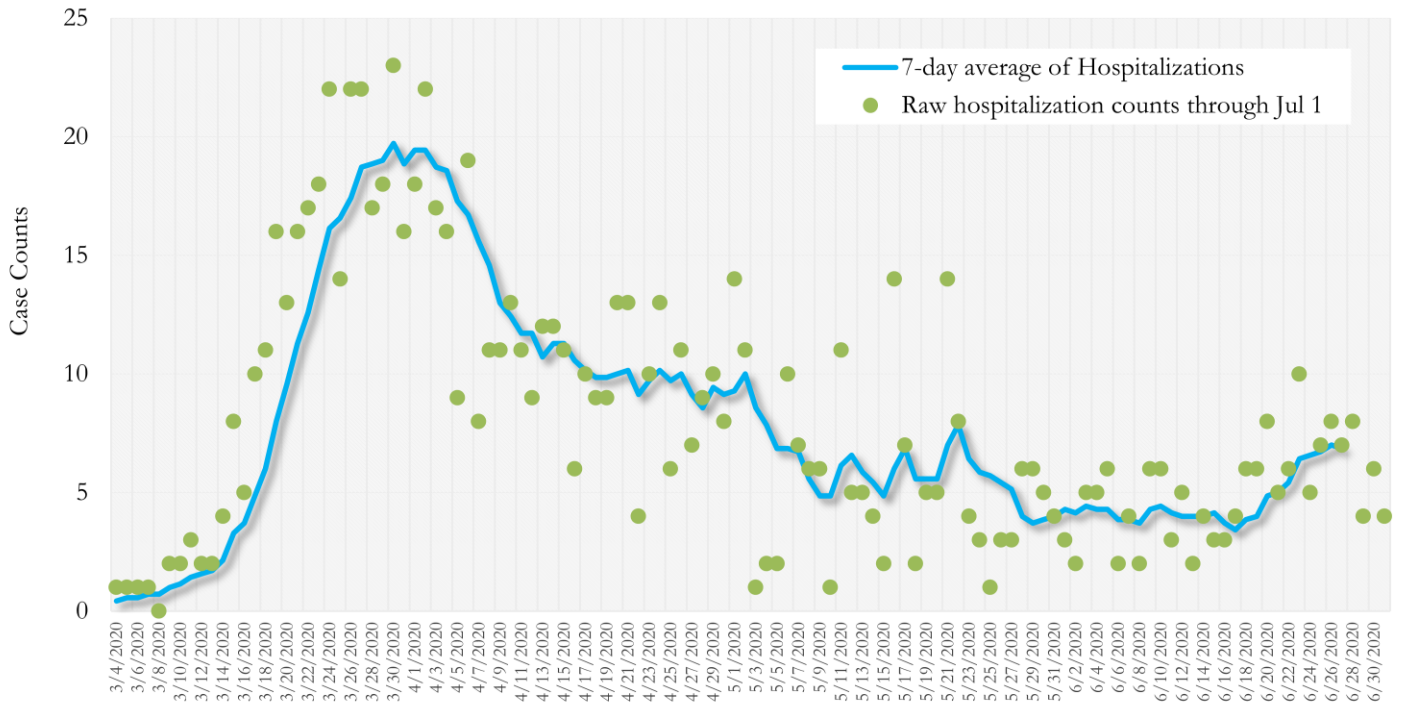
\*Date of collection of first positive sample used (report creation date used where sample collection date is missing).

**Fig. 15. New COVID-19 Cases in Georgia State Daily (Averaged over 7 days)  
Mar 01, 2020 - Jun 24, 2020**



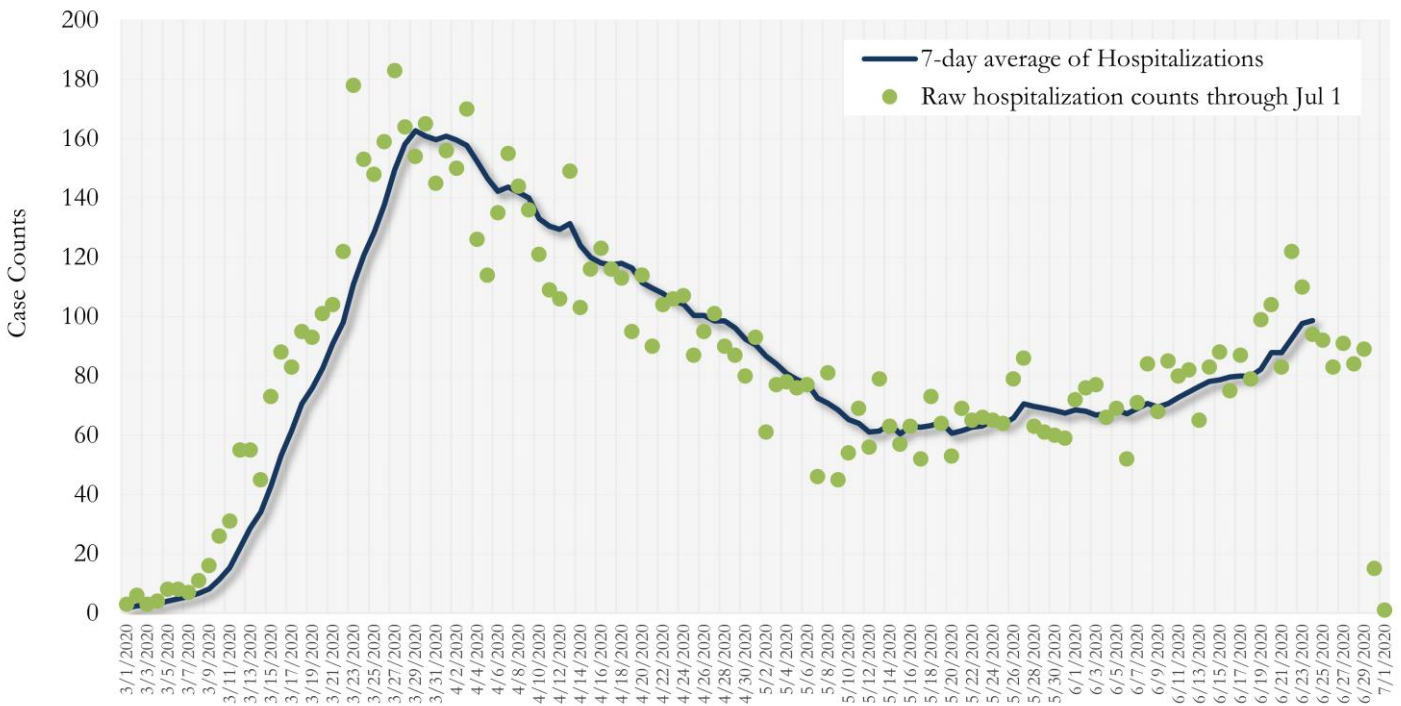
\*Date of collection of first positive sample used (report creation date used where sample collection date is missing).

**Fig. 16. COVID-19 Hospitalizations in Fulton County Daily (Averaged over 7 days)  
Mar 01, 2020 - Jun 24, 2020**



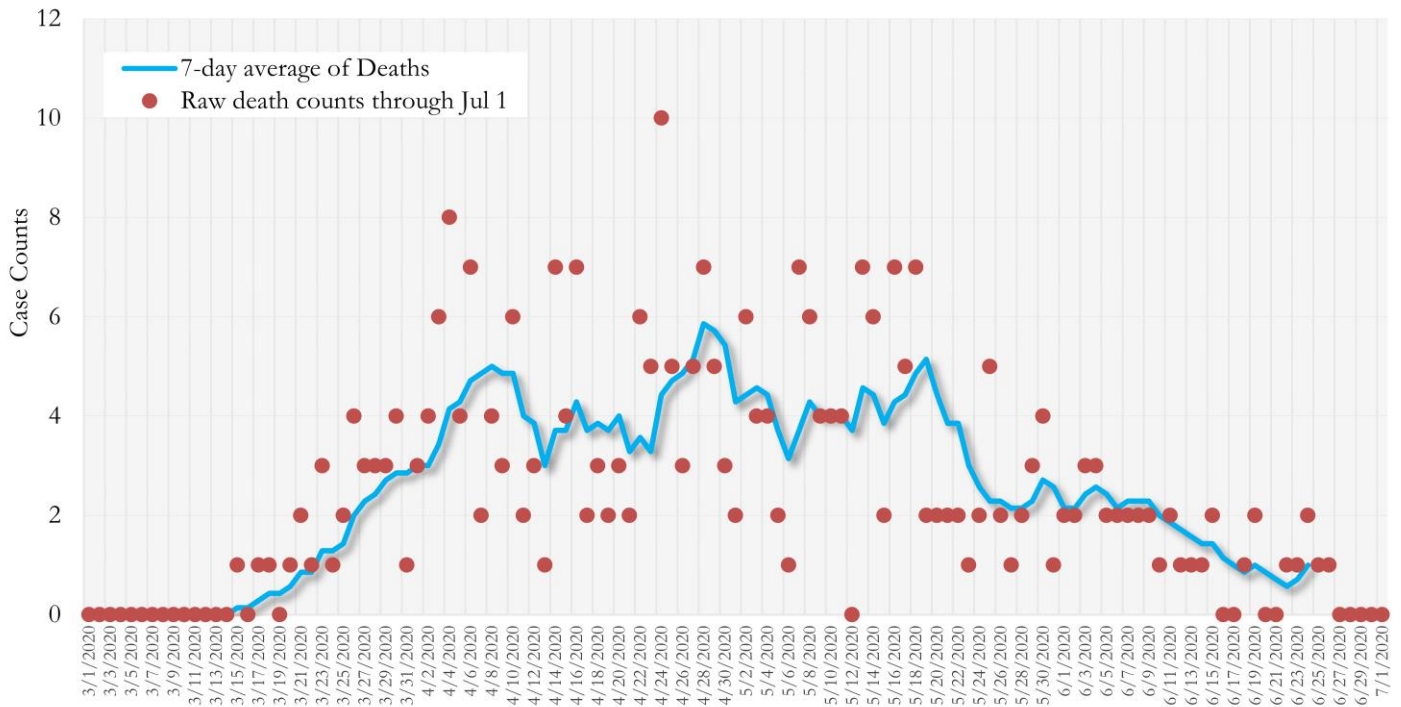
\*Date of collection of first positive sample used (report creation date used where sample collection date is missing).

**Fig. 17. COVID-19 Hospitalizations in Georgia State Daily (Averaged over 7 days)  
March 01, 2020 - Jun 24, 2020**



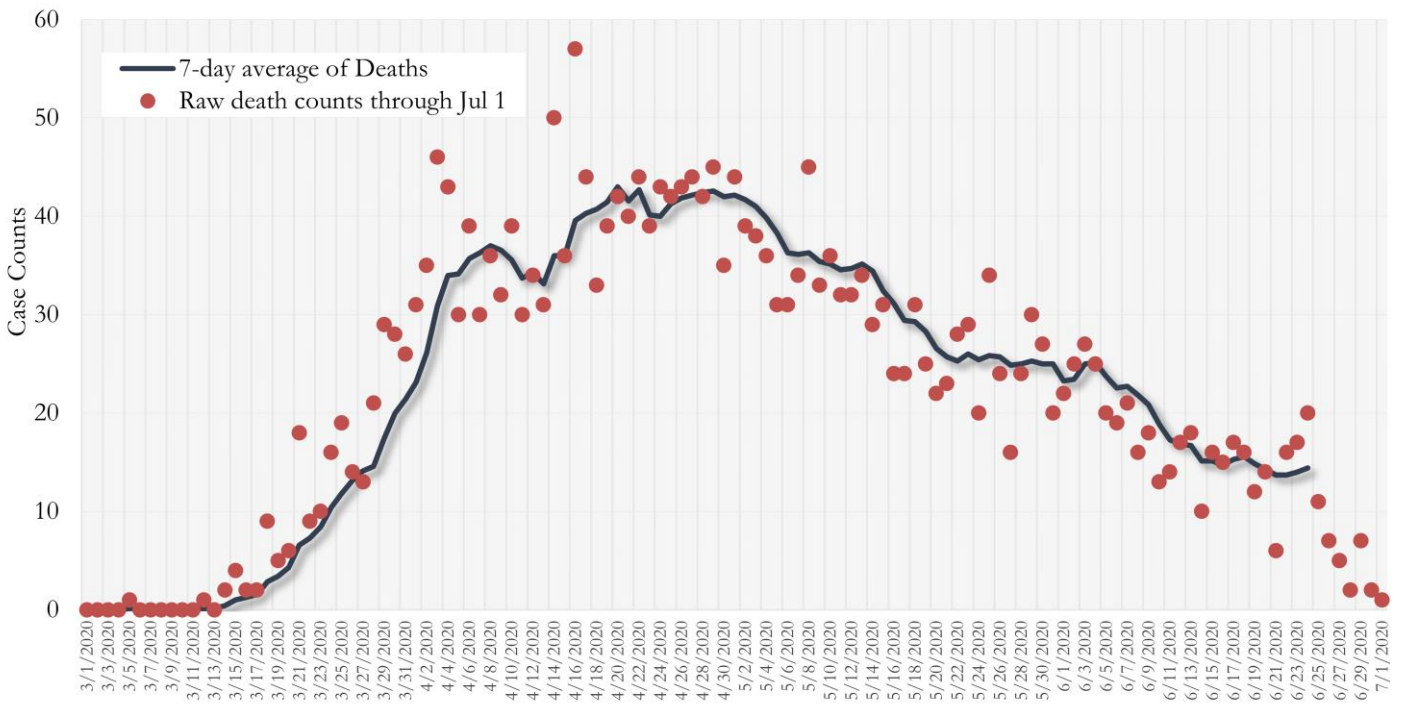
\*Date of collection of first positive sample used (report creation date used where sample collection date is missing).

**Fig. 18. COVID-19 Deaths in Fulton County Daily (Averaged over 7 days)  
Mar 01, 2020 - Jun 24, 2020**



\*Reported date of death used.

**Fig. 19. COVID-19 Deaths in Georgia State Daily (Averaged over 7 days)  
Mar 01, 2020 - Jun 24, 2020**



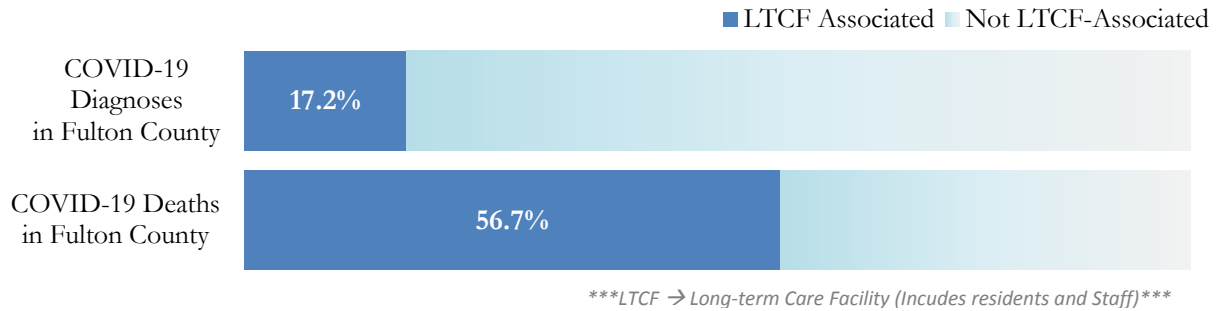
\* Reported date of death used.



## COVID-19 IN LONG-TERM CARE FACILITIES IN FULTON

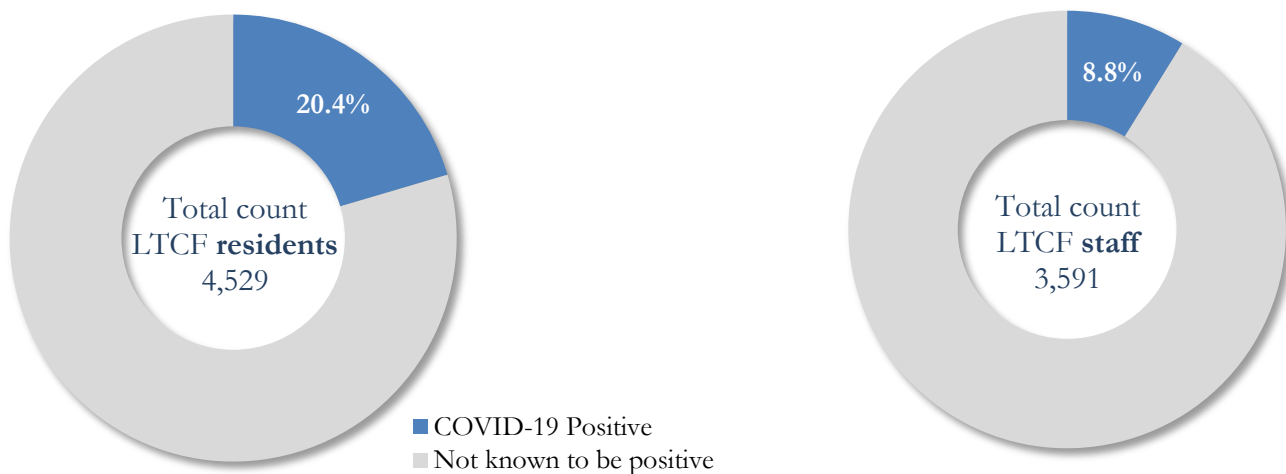
Older persons (aged 65 years and older) and persons who live in nursing homes or other long-term care facilities seem to be at higher risk for developing more serious complications from COVID-19. Extra precautions are recommended for individuals within this risk groups – Centers for Disease Control and Prevention (CDC 2020) <https://www.cdc.gov/coronavirus/2019-ncov/need-extra-precautions/people-at-higher-risk.html>

Fig. 20. COVID-19 Diagnoses and Deaths in Fulton County Associated with Long-Term Care Facilities (7/01/20)



**COVID-19 POSITIVITY:** COVID-19 testing is currently being provided at various long-term care facilities in Fulton County through the efforts of the Board of Health and the National Guard. See <https://dch.georgia.gov/> for a line listing of COVID-19 cases at all facilities in Georgia.

Fig. 21. COVID-19 Positivity at 53 reporting Long-Term Care Facilities (LTCF) in Fulton County (7/01/20)



COVID-19 Cases, Hospitalizations, and Deaths among 53 reporting Long-Term Care Facilities in Fulton County (7/01/20)

	LTCF Residents (n=4,529)			LTCF Staff (n=3,591)		
	Cases	Hospitalizations	Deaths	Cases	Hospitalizations	Deaths
<b>Average</b> (count per fac.) <sup>1</sup>	17	5	3	6	0	<0.1
<b>Median</b> (count per fac.) <sup>1</sup>	3	3	0	2	0	0
<b>Lowest counts</b>	0	0	0	0	0	0
<b>Highest counts</b>	136	48	29	41	8	1
<b>Total Count</b>	<b>925 (20.4)<sup>a</sup></b>	<b>252 (27.2)<sup>b</sup></b>	<b>176 (19.0)<sup>b</sup></b>	<b>317 (8.8)<sup>a</sup></b>	<b>26 (8.2)<sup>b</sup></b>	<b>1 (0.3)<sup>b</sup></b>

<sup>a</sup> Percentage shown reflects proportion of total residents/staff tested who were positive (i.e. COVID-19 Positivity). | <sup>b</sup> Percentages shown are proportions of persons residents/staff diagnosed with COVID-19 who were hospitalized or died after diagnoses.