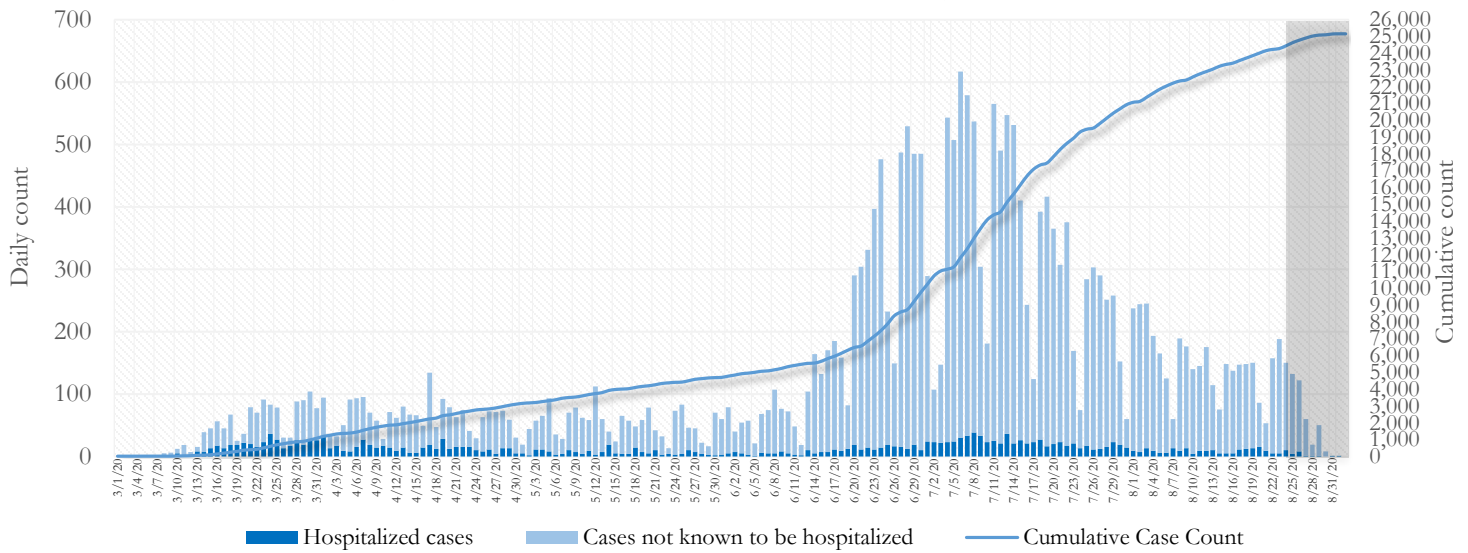


## SUMMARY

- As of September 2, 2020, Fulton County has recorded **25,152** cases of the 2019 novel coronavirus (COVID-19) and **527** deaths.
- Of 2,012 **new diagnoses** made between August 13 and August 26, the central portion of the county (Atlanta metro) accounted for 35% while the northern and southern parts accounted for 35% and 17% respectively.
- By city, **new** COVID-19 diagnoses rates range from 128.1 per 100,000 persons (Sandy Springs) to 238.4 per 100,000 persons (Palmetto). [Fulton County Diagnoses Rates (per 100,000 persons): Cumulative – 2364.0; Incident –189.1]. See map showing incident case rate by ZIP code on Pg.4.
- Among all persons diagnosed with COVID-19 in Fulton County, 8.7% required hospitalization and 2.1% died.
- Residents and staff of long-term care facilities account for 7.5% of COVID-19 diagnoses and 41.2% of COVID-19 deaths in Fulton County.

**Fig 1. Daily and Cumulative COVID-19 diagnoses in Fulton County, GA**



\*Counts shown reflect the number of confirmed cases as of 9:00am on 9/2/20 using the date of first positive sample collection. Where date of sample collection was not available or missing, the date of report creation in GA SENDSS was used instead. **Note:** All data reported are preliminary and subject to change. Delays in data reporting may cause changes in data counts, particularly in the shaded portion.

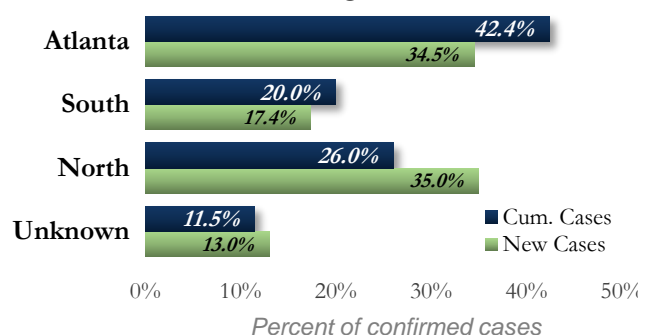
## DISTRIBUTION OF COVID-19 DIAGNOSES BY REGION

**New cases:** 35% of the new COVID-19 cases diagnosed in the past 2 weeks occurred in Atlanta while 35% and 17% occurred in the Northern and Southern regions of the county respectively.

Fulton Region	% Cumulative count	% New cases*
Atlanta	42.4%	34.5%
North <sup>1</sup>	26.0%	35.0%
South <sup>2</sup>	20.0%	17.4%
Unincorporated/Unknown	11.5%	13.0%

<sup>1</sup>Includes all Fulton County cities north of Atlanta metro (Alpharetta, Milton, Johns Creek, Roswell, Sandy Springs, Mountain Park) |<sup>2</sup>Includes all cities south of Atlanta (College Park, Chattahoochee Hills, East Point, Hapeville, Palmetto, South Fulton, Fairburn, and Union City) \***New cases:** Cases diagnosed in the past 2 weeks only (between 8/13/20 – 8/26/20).

**Fig. 2. Distribution of COVID 19 cases by Region**

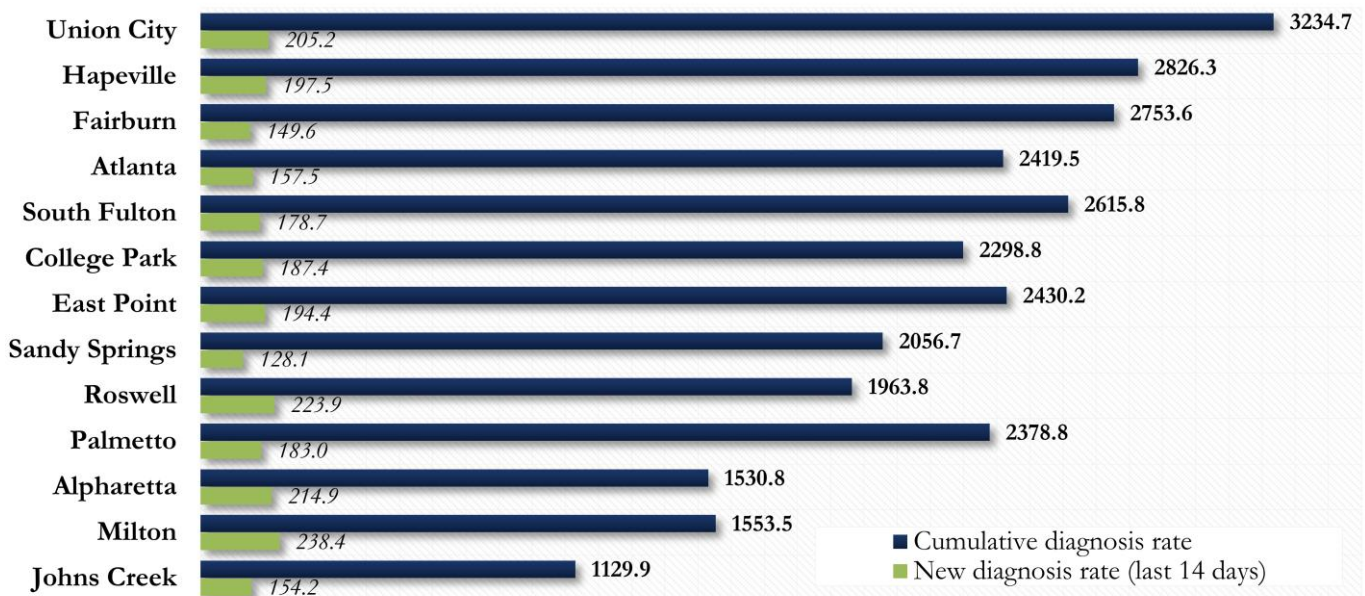


## COVID-19 CASE COUNTS AND RATES BY CITY

	Prior (8/30/20)	Current Total (9/2/20)			New Cases (Period: 7/29/20 – 8/26/20) <sup>1</sup>			
	Count	Count	%	Cum. Rate <sup>2</sup>	1 <sup>st</sup> 14 d. (7/29–8/12)	Last 14 d. (8/13–8/26)	% change <sup>3</sup>	Rate <sup>4</sup> (Last 14 d).
Atlanta	10563	10674	42.4%	2419.5	939	695	↓ 26.0%	157.5
South Fulton	2472	2488	9.9%	2615.8	247	170	↓ 31.2%	178.7
Sandy Springs	2131	2168	8.6%	2056.7	194	135	↓ 30.4%	128.1
Roswell	1812	1851	7.4%	1963.8	261	211	↓ 19.2%	223.9
East Point	842	850	3.4%	2430.2	93	68	↓ 26.9%	194.4
Johns Creek	912	945	3.8%	1129.9	117	129	↑ 10.3%	154.2
Union City	674	678	2.7%	3234.7	71	43	↓ 39.4%	205.2
Alpharetta	962	990	3.9%	1530.8	131	139	↑ 6.1%	214.9
Milton	576	593	2.4%	1553.5	88	91	↑ 3.4%	238.4
Fairburn	399	405	1.6%	2753.6	53	22	↓ 58.5%	149.6
College Park	317	319	1.3%	2298.8	37	26	↓ 29.7%	187.4
Palmetto	103	104	0.4%	2378.8	22	<10	↓ 63.6%	183.0
Hapeville	185	186	0.7%	2826.3	23	13	↓ 43.5%	197.5
Mountain Park	5	5	0.0%	800.0	<10	0	-	0.0
Chattahooche Hills	0	0	0.0%	-	-	-	-	-
Unknown	3199	2896	11.5%	-	348	259	-	-

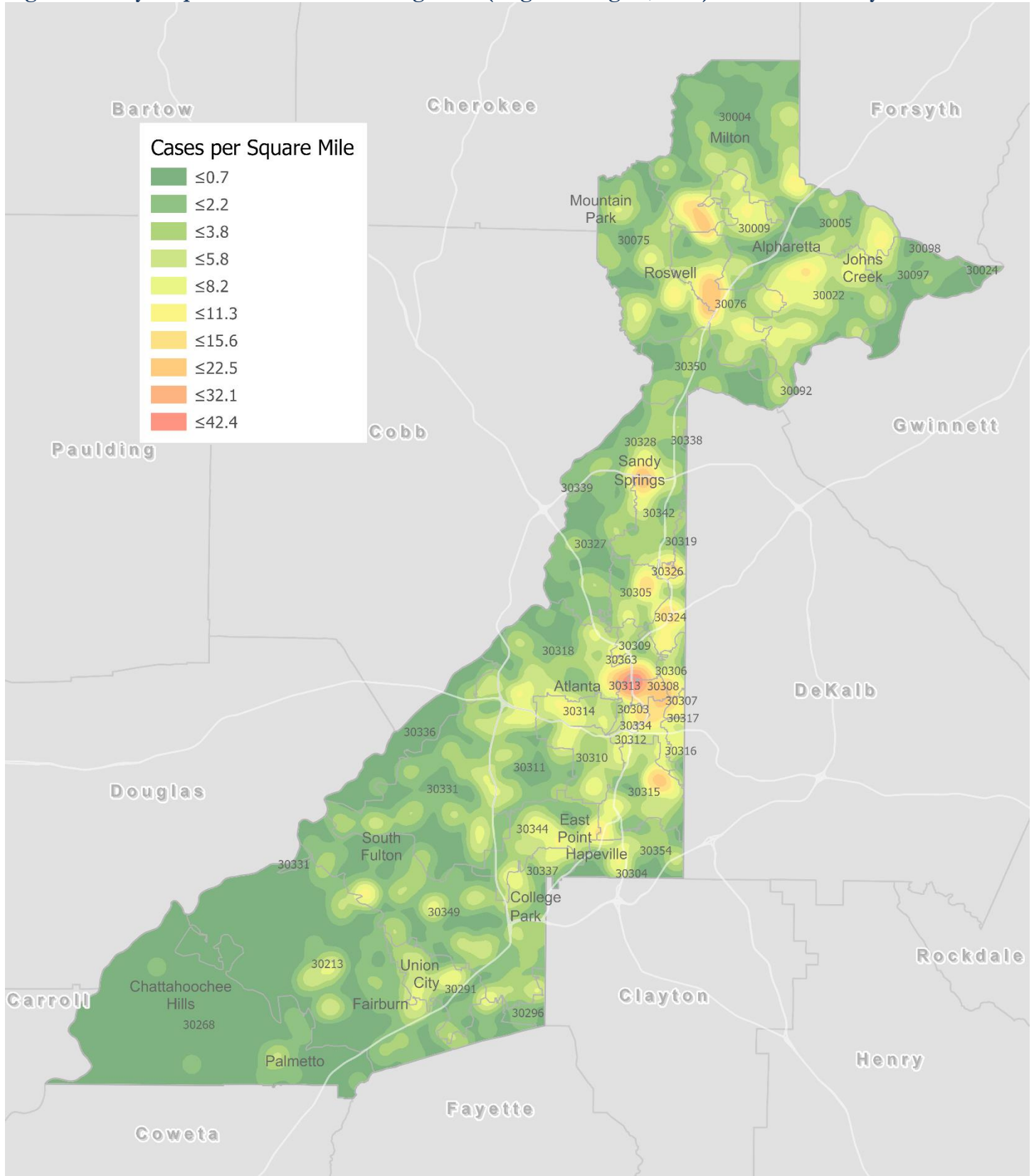
<sup>1</sup>**New cases:** Cases diagnosed in most recent 28 days (based on reported dates of positive sample collection). To allow for lag in reporting results of new diagnoses from samples collected in the most recent week, data used for incident diagnoses analyses were moved back by one week. <sup>2</sup>**Cumulative diagnosis rate:** Population estimates from US Census Bureau used to calculate cumulative diagnoses rate. All rates shown are per 100,000 persons. <sup>3</sup>**% change:** These reflect the percentage increase or decrease in new diagnoses between the 14 days preceding the most recent 7 days and the 14 days preceding that. Changes in cities with less than 10 cases in both 2 week intervals are not reported <sup>4</sup>**(Incidence) Rate:** Rate of new diagnoses in the last 14 day period preceding the immediate past week. **\*\*Data cleaning** (either during case interviews or address geo-coding) may lead to reassignment of few cases from one territory to another based on their corrected addresses. These may appear as “decreases” when compared to the previous day’s count. These do not reflect errors in the data collection or analysis process but only reflect the minor day-to-day fluctuations in case counts that arise in an evolving public health database like COVID’s. **Note: All data reported are preliminary and subject to change.**

Fig. 3. Incident & Cumulative Diagnoses Rates for COVID-19 by City



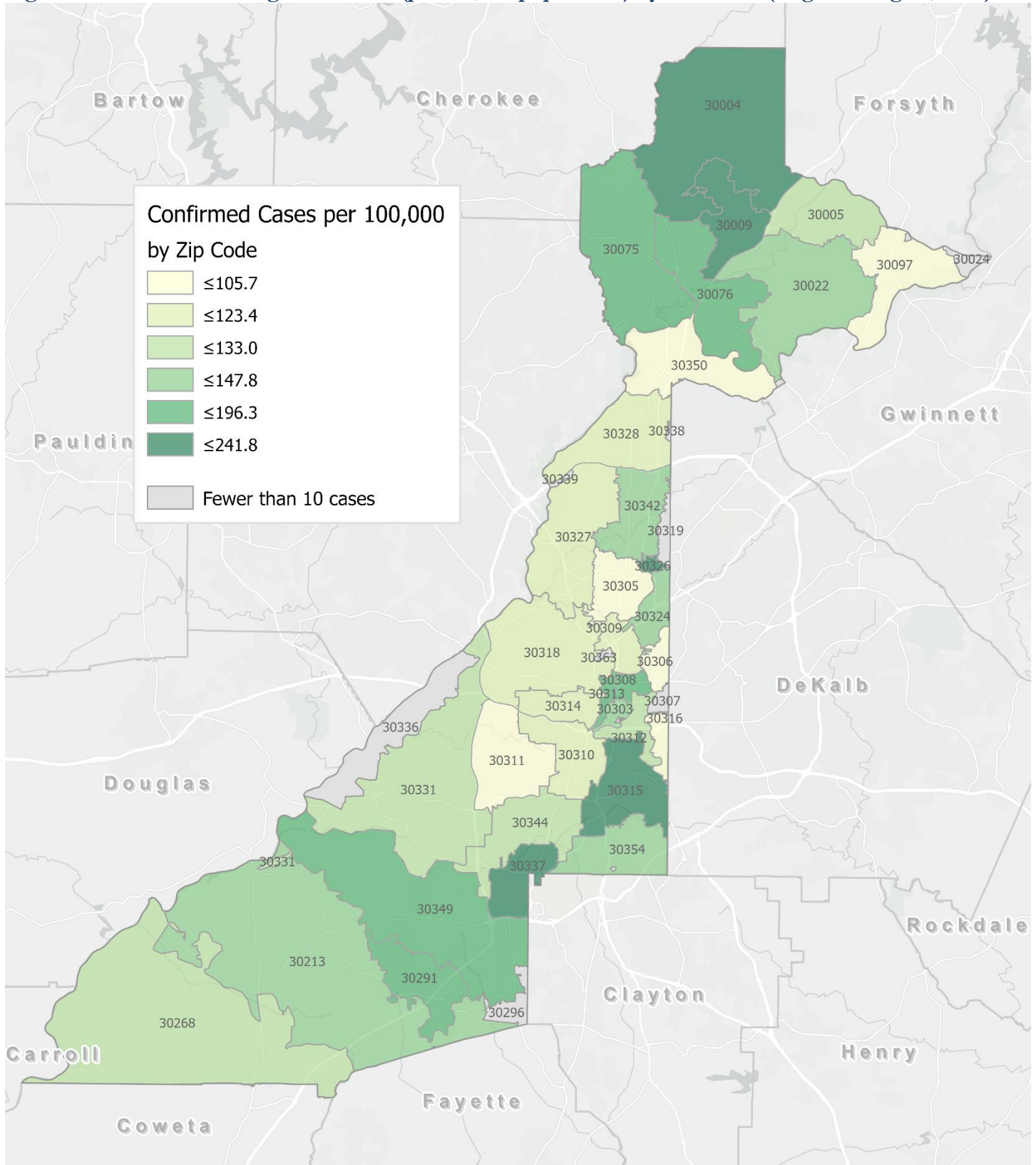
\*Rates shown are per 100,000 persons | **Note:** Mass testing in specific locations (e.g. long term care facilities) may cause sharp increases in the cumulative rate of COVID-19 diagnosis in those territories. All data shown are preliminary and are subject to change as testing results get updated.

Fig. 4. Density Map – New COVID 19 Diagnoses (Aug 13 – Aug 26, 2020) in Fulton County



**New COVID-19 cases:** Cases diagnosed in most recent 14 days (based on reported dates of positive sample collection). To allow for lag in reporting results of positive cases from samples collected in the immediate past 7 days, data used for incident diagnoses analyses are moved back by one week. Map reflects new COVID-19 cases diagnosed between Aug 13<sup>th</sup> and Aug 26<sup>th</sup>, 2020 across Fulton County.

Fig. 5. New COVID-19 Diagnoses Rates (per 100,000 population) by ZIP Code (Aug 13 – Aug 26, 2020)



\*Rates shown are per 100,000 populations.

**New COVID-19 cases:** Cases diagnosed in most recent 14 days (based on reported dates of positive sample collection). To allow for lag in reporting results of positive cases from samples collected in the immediate past 7 days, data used for incident diagnoses analyses are moved back by one week. Data used excludes outbreak-related cases at long-term care facilities and map shown reflects only the new non-LTCF cases diagnosed between the dates shown in map title.

## COVID-19 CASE COUNTS BY ZIP CODE

	Prior (8/30/20)	Current Total (9/2/20)		New Cases (Period: 7/29/20 – 8/26/20) <sup>1</sup>		
	Count	Count	%	1st 14 days (Jul 29 – Aug 12)	Last 14 d. (Aug 13 – Aug 26)	% change <sup>2</sup>
<b>All Fulton</b>	24894	25152	100.0%	2631	2012	↓ 23.5%
30331	1585	1590	6.3%	151	96	↓ 36.4%
30318	1481	1492	5.9%	142	88	↓ 38.0%
30349	1644	1640	6.5%	185	128	↓ 30.8%
30213	965	973	3.9%	122	71	↓ 41.8%
30315	768	774	3.1%	103	79	↓ 23.3%
30344	781	789	3.1%	92	61	↓ 33.7%
30311	709	719	2.9%	77	40	↓ 48.1%
30342	1060	1070	4.3%	70	65	↓ 7.1%
30314	521	524	2.1%	43	32	↓ 25.6%
30310	662	667	2.7%	71	46	↓ 35.2%
30308	441	451	1.8%	31	38	↑ 22.6%
30022	1003	1020	4.1%	133	129	↓ 3.0%
30327	464	470	1.9%	49	34	↓ 30.6%
30004	901	917	3.6%	123	155	↑ 26.0%
30309	676	686	2.7%	57	36	↓ 36.8%
30076	899	909	3.6%	158	106	↓ 32.9%
30291	696	702	2.8%	71	40	↓ 43.7%
30350	486	500	2.0%	56	36	↓ 35.7%
30075	904	926	3.7%	113	107	↓ 5.3%
30328	697	710	2.8%	69	43	↓ 37.7%
30316	367	369	1.5%	40	32	↓ 20.0%
30312	716	723	2.9%	43	37	↓ 14.0%
30005	457	468	1.9%	70	55	↓ 21.4%
30305	679	684	2.7%	38	31	↓ 18.4%
30306	312	314	1.2%	28	22	↓ 21.4%
30324	802	803	3.2%	62	53	↓ 14.5%
30337	300	302	1.2%	31	28	↓ 9.7%
30009	354	367	1.5%	42	46	↑ 9.5%
30313	171	182	0.7%	19	27	↑ 42.1%
30326	196	199	0.8%	10	12	↑ 20.0%
30097	184	205	0.8%	17	16	↓ 5.9%
30354	381	385	1.5%	45	26	↓ 42.2%
30303	369	370	1.5%	24	13	↓ 45.8%
30339	311	301	1.2%	48	30	↓ 37.5%
30268	170	172	0.7%	30	16	↓ 46.7%
30307	185	183	0.7%	22	28	↑ 27.3%
30319	114	120	0.5%	<10	10	↑ 42.9%
30336	78	78	0.3%	<10	<10	-
30296	39	40	0.2%	<10	<10	-
30363	57	57	0.2%	<10	<10	-
30301	<10	<10	<0.1%	<10	<10	-
30345	36	36	0.1%	<10	0	↓ 100.0%
31131	<10	<10	<0.1%	0	<10	-
30023	<10	<10	<0.1%	0	<10	-
30080	<10	<10	<0.1%	<10	0	↓ 100.0%
30135	<10	<10	<0.1%	0	0	-
30138	<10	<10	<0.1%	0	0	-
30139	-	-	-	0	0	-
30321	12	12	<0.1%	<10	<10	-
30340	35	35	0.1%	<10	<10	-

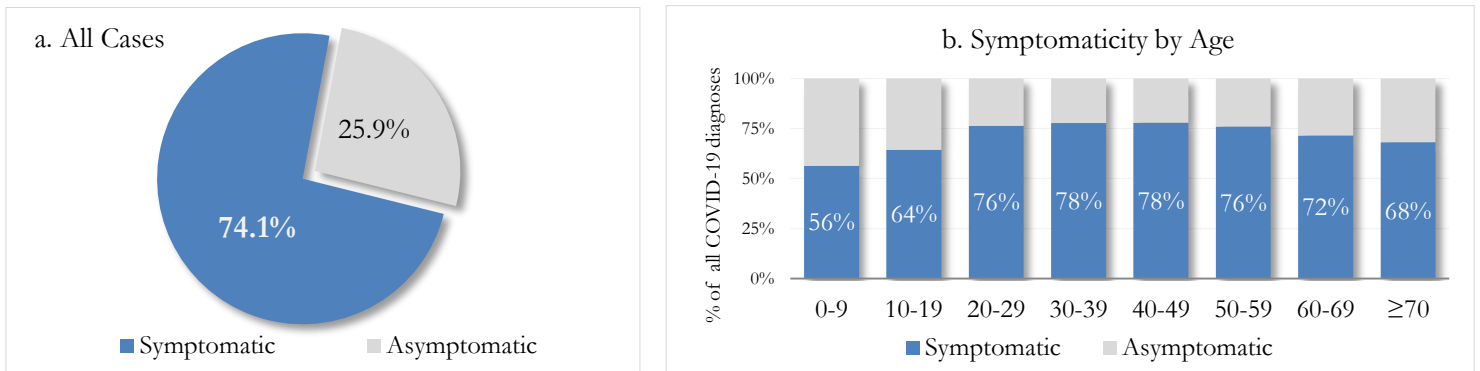
30341	38	38	0.2%	<10	0	↓ 100.0%
30358	<10	<10	<0.1%	0	<10	-
30374	31	31	0.1%	<10	0	↓ 100.0%
30606	<10	<10	<0.1%	0	0	-
31150	<10	<10	<0.1%	<10	0	↓ 100.0%
30024	15	15	<0.1%	<10	<10	-
30098	-	-	-	0	0	-
30334	14	14	<0.1%	<10	<10	-
30338	169	166	0.7%	21	19	↓ 9.5%
Unknown	1174	910	3.6%	81	65	-

<sup>1</sup>**New cases:** Cases diagnosed in most recent 28 days (based on reported dates of positive sample collection). To allow for lag in reporting results of new diagnoses from samples collected in the most recent week, data used for incident diagnoses analyses were moved back by one week. <sup>2</sup>**Percent change:** These reflect the percentage increase or decrease of new diagnoses between the 14 days preceding the past 7 days and the 14 days preceding that. Changes in ZIP codes with less than 10 cases in both 2 week intervals are not reported\*\*Data cleaning (either during case interviews or address geo-coding) may lead to reassignment of few cases from one territory to another based on their corrected addresses. These may appear as “decreases” when compared to the previous day’s count. These do not reflect errors in the data collection or analysis process but only reflect the minor day-to-day fluctuations in case counts that arise in an evolving public health database like COVID’s. **Note:** Sharp increases in territorial COVID case counts often reflect new cases diagnosed at long term care facilities located in those territories during facility-wide /mass screening events **All data reported are preliminary and subject to change.**

## REPORTING SYMPTOMS AMONG PERSONS DIAGNOSED WITH COVID-19 IN FULTON

People with COVID-19 have reported a wide range of symptoms ranging from mild symptoms to severe illness. Symptoms may appear 2-14 days after exposure to the virus. Symptoms reported include: cough, shortness of breath/difficulty breathing, fever, chills, repeated shaking with chills, muscle pain, headache, sore throat, new loss of taste or smell – Centers for Disease Control and Prevention (CDC)  
<https://www.cdc.gov/coronavirus/2019-ncov/symptoms-testing/symptoms.html>

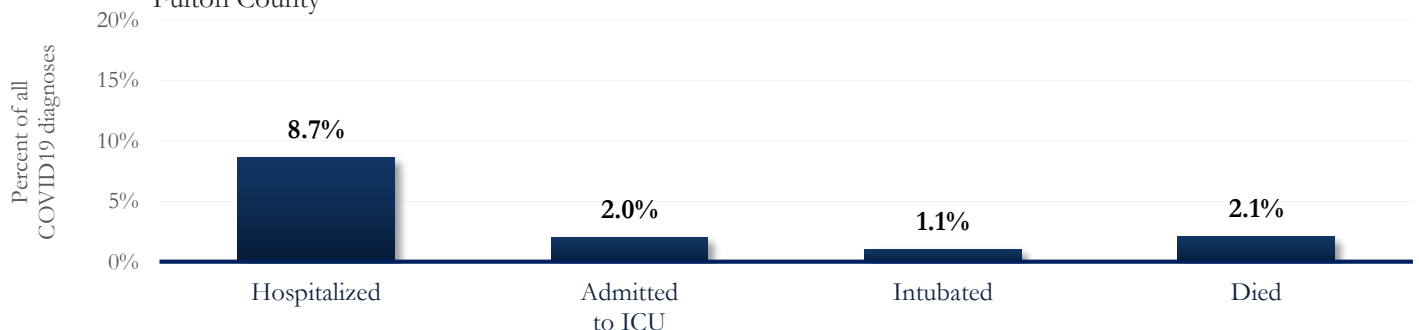
Fig. 6a & b. Proportion Reporting Symptoms in Fulton



\*\*\*COVID-19 cases who have been case interviewed or had medical charts reviewed as at 9/2/20 only\*\*\*

## COVID-19 HOSPITALIZATIONS, ICU ADMISSIONS AND DEATHS IN FULTON

Fig. 7. Hospitalizations, ICU Admissions, Intubations, and Deaths among COVID-19 Diagnoses in Fulton County



## DEMOGRAPHIC DISTRIBUTIONS – COVID 19 DIAGNOSES AND DEATHS

### A. Distribution of COVID-19 diagnoses by gender, age, and race in Fulton County by Fulton Region

	North Fulton Cities <sup>1</sup> Count (%)	Atlanta Count (%)	South Fulton Cities <sup>2</sup> Count (%)	Unknown City Count (%)	All Fulton Count (%)
<b>Total COVID-19 cases</b>	6552	10674	5030	2896	25152
<b>Gender:</b> Female	3263 (49.8%)	5133 (48.1%)	2729 (54.3%)	1432 (49.4%)	12557 (49.9%)
Male	3056 (46.6%)	4893 (45.8%)	2053 (40.8%)	1308 (45.2%)	11310 (45.0%)
Unknown*	233 (3.6%)	648 (6.1%)	248 (4.9%)	156 (5.4%)	1285 (5.1%)
<b>Age:</b> 0-9	205 (3.1%)	190 (1.8%)	152 (3.0%)	73 (2.5%)	620 (2.5%)
10-19	932 (14.2%)	684 (6.4%)	346 (6.9%)	199 (6.9%)	2161 (8.6%)
20-29	1439 (22.0%)	3052 (28.6%)	993 (19.7%)	754 (26.0%)	6238 (24.8%)
30-39	1044 (15.9%)	2314 (21.7%)	1045 (20.8%)	613 (21.2%)	5016 (19.9%)
40-49	1042 (15.9%)	1419 (13.3%)	922 (18.3%)	450 (15.5%)	3833 (15.2%)
50-59	926 (14.1%)	1193 (11.2%)	689 (13.7%)	356 (12.3%)	3164 (12.6%)
60-69	484 (7.4%)	815 (7.6%)	464 (9.2%)	224 (7.7%)	1987 (7.9%)
≥70	473 (7.2%)	982 (9.2%)	406 (8.1%)	219 (7.6%)	2080 (8.3%)
Unknown*	<10	25 (0.2%)	13 (0.3%)	<10	53 (0.2%)
<b>Race:</b> Asian, NH	185 (2.8%)	148 (1.4%)	16 (0.3%)	54 (1.9%)	403 (1.6%)
Black, NH	614 (9.4%)	4542 (42.6%)	3018 (60.0%)	813 (28.1%)	8987 (35.7%)
White, NH	2065 (31.5%)	1901 (17.8%)	190 (3.8%)	594 (20.5%)	4750 (18.9%)
Hispanic	1184 (18.1%)	611 (5.7%)	375 (7.5%)	310 (10.7%)	2480 (9.9%)
Other, NH	257 (3.9%)	304 (2.8%)	101 (2.0%)	107 (3.7%)	769 (3.1%)
Unknown*	2247 (34.3%)	3168 (29.7%)	1330 (26.4%)	1018 (35.2%)	7763 (30.9%)

\*Unknown included cases not yet interviewed.

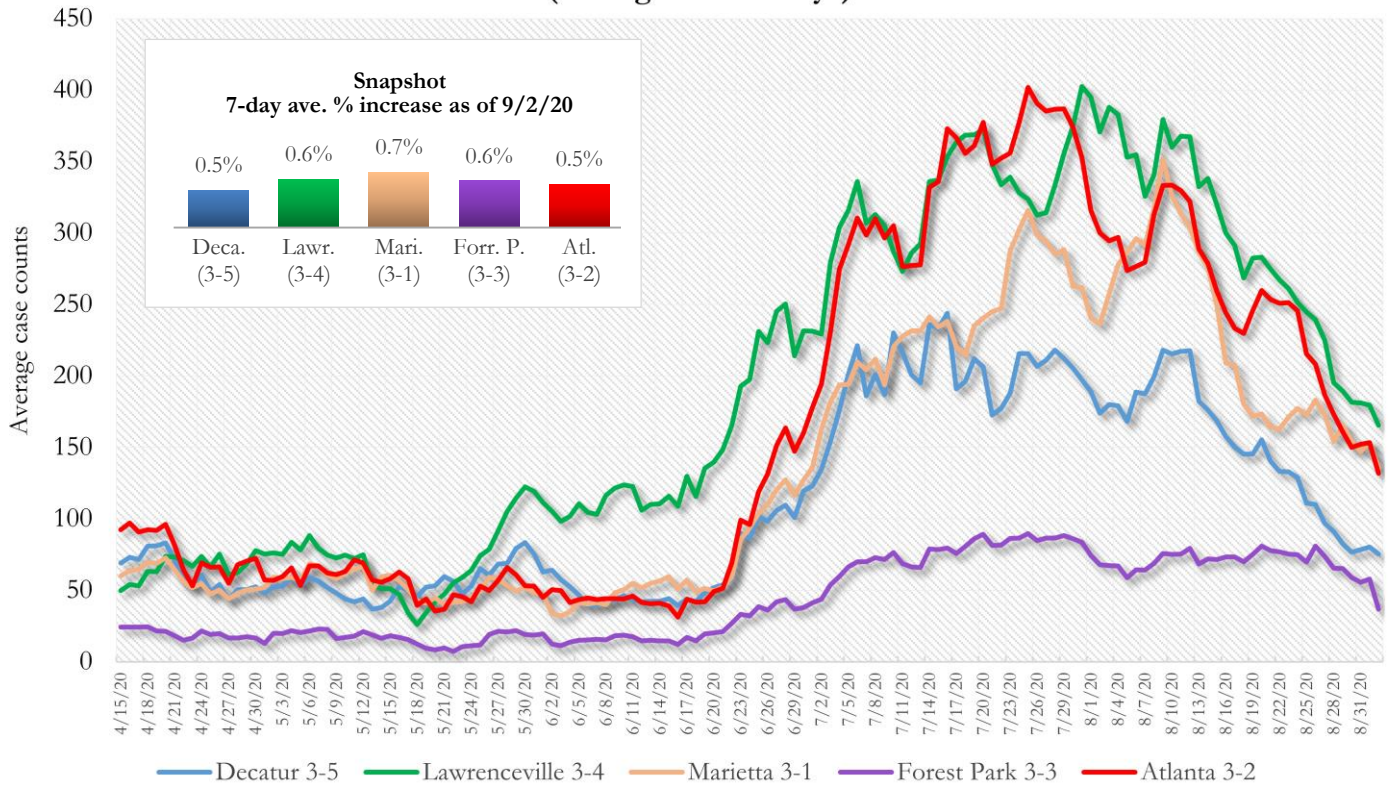
### B. Distribution of COVID-19 deaths by gender, age, and race in Fulton County by Fulton Region

	North Fulton Cities <sup>1</sup> Count (%)	Atlanta Count (%)	South Fulton Cities <sup>2</sup> Count (%)	Unknown City Count (%)	All Fulton Count (%)
<b>Total COVID-19 deaths</b>	102	251	131	43	527
<b>Gender:</b> Female	46 (45.1%)	110 (43.8%)	68 (51.9%)	24 (55.8%)	248 (47.1%)
Male	56 (54.9%)	141 (56.2%)	63 (48.1%)	19 (44.2%)	279 (52.9%)
Unknown	0	0	0	0	0
<b>Age:</b> ≤ 29	0	<10	<10	0	<10
30-39	<10	<10	<10	<10	13 (2.5%)
40-49	<10	<10	<10	<10	22 (4.2%)
50-59	<10	23 (9.2%)	17 (13.0%)	<10	45 (8.5%)
60-69	12 (11.8%)	48 (19.1%)	32 (24.4%)	<10	95 (18.0%)
≥70	80 (78.4%)	162 (64.5%)	72 (55.0%)	34 (79.1%)	348 (66.0%)
Unknown	0	0	0	0	0
<b>Race:</b> Asian, NH	<10	<10	<10	<10	<10
Black, NH	18 (17.6%)	214 (85.3%)	112 (85.5%)	22 (51.2%)	366 (69.4%)
White, NH	74 (72.5%)	30 (12.0%)	12 (9.2%)	17 (39.5%)	133 (25.2%)
Hispanic	<10	<10	<10	<10	17 (3.2%)
Other, NH	0	<10	<10	0	<10
Unknown	0	0	0	0	<10

<sup>1</sup>Includes all Fulton County cities north of Atlanta metro (Alpharetta, Milton, Johns Creek, Roswell, Sandy Springs, Mountain Park ) <sup>2</sup>Includes all cities south of Atlanta (College Park, Chattahoochee Hills, East Point, Hapeville, Palmetto, South Fulton, Fairburn, Union City). **Note:** All data reported are preliminary and subject to change.

**COVID-19 CASE TRENDS IN FULTON AND SURROUNDING DISTRICTS**

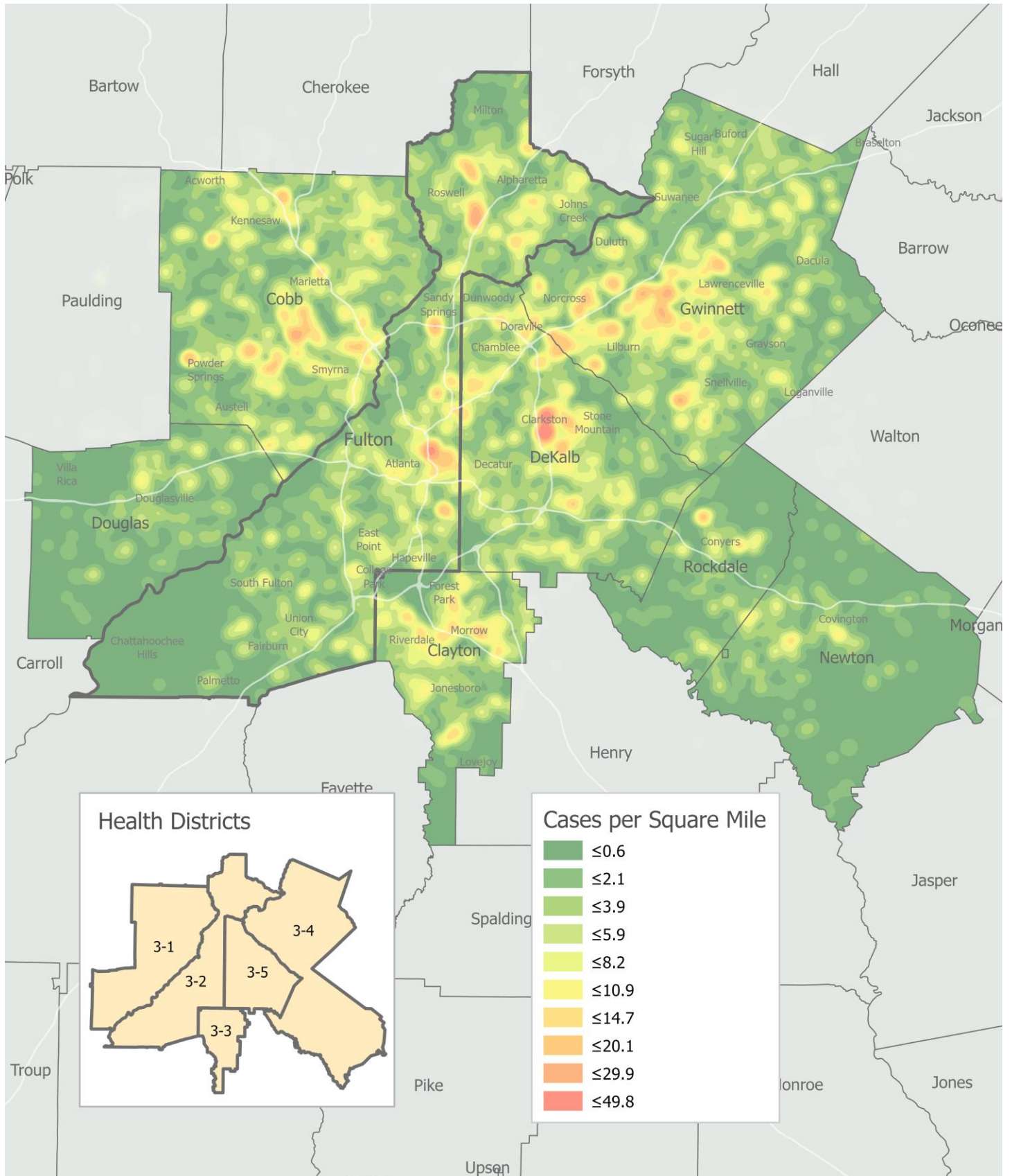
**Fig. 8. Daily Case Counts for Atlanta Metro Districts  
(Averaged over 7 days)**



\*Graph shows the average number of cases calculated from the daily cumulative case counts in the metro Atlanta districts. Increases in daily cumulative case counts may include cases diagnosed earlier during the pandemic but were only recently reported to the state as cases diagnosed belonging to these districts.

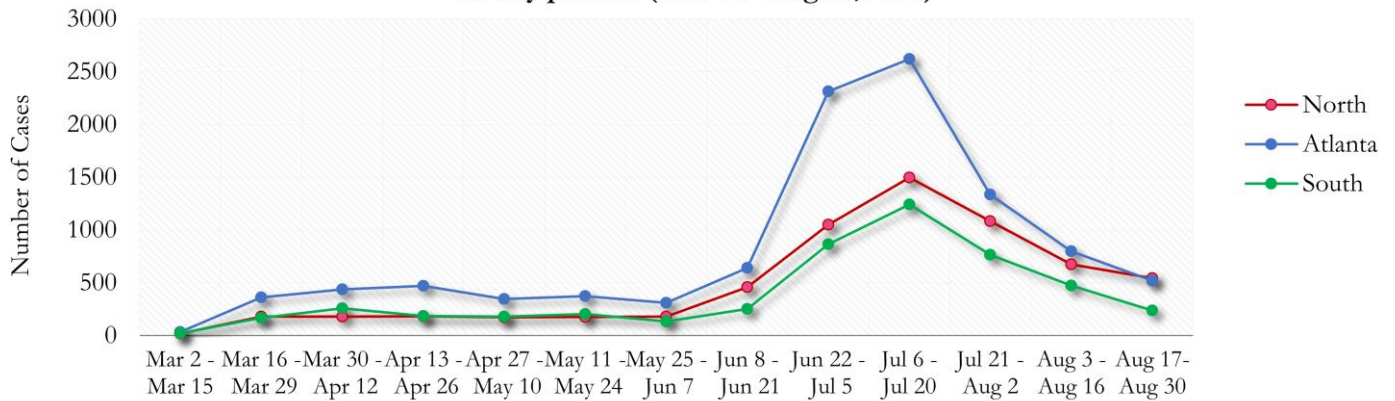


Fig. 9. COVID-19 Cases in Fulton County and Surrounding Districts (Aug 13 – Aug 26, 2020)



**TRENDS IN COVID-19 CASES AMONG DEMOGRAPHIC GROUPS (14 DAY PERIODS)**

**Fig. 10. Trends in Geographic distribution of COVID -19 Diagnoses in Fulton County by 14-day periods (Mar 02 - Aug 30, 2020)**

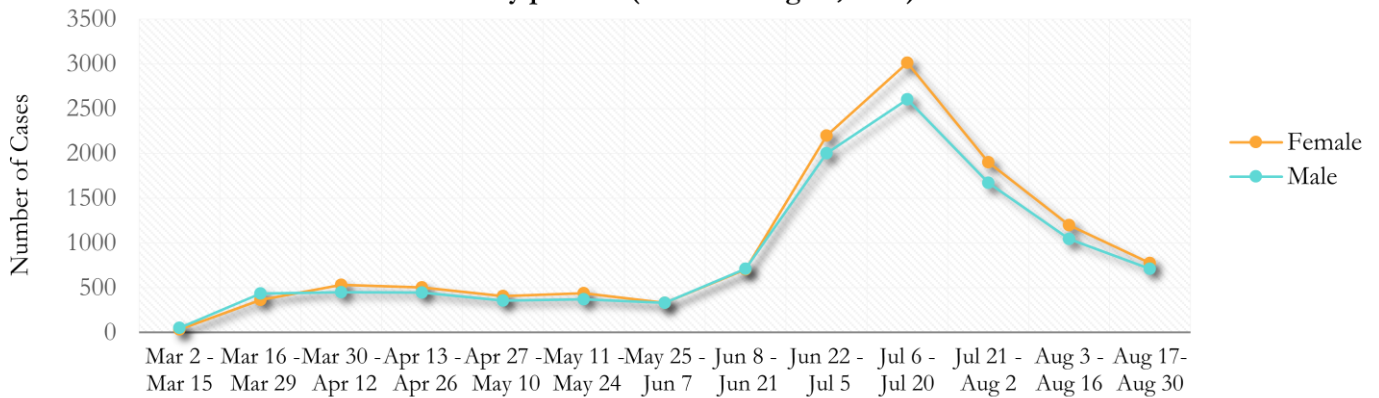


Atlanta metro has consistently accounted for the majority of newly diagnosed cases in Fulton County.

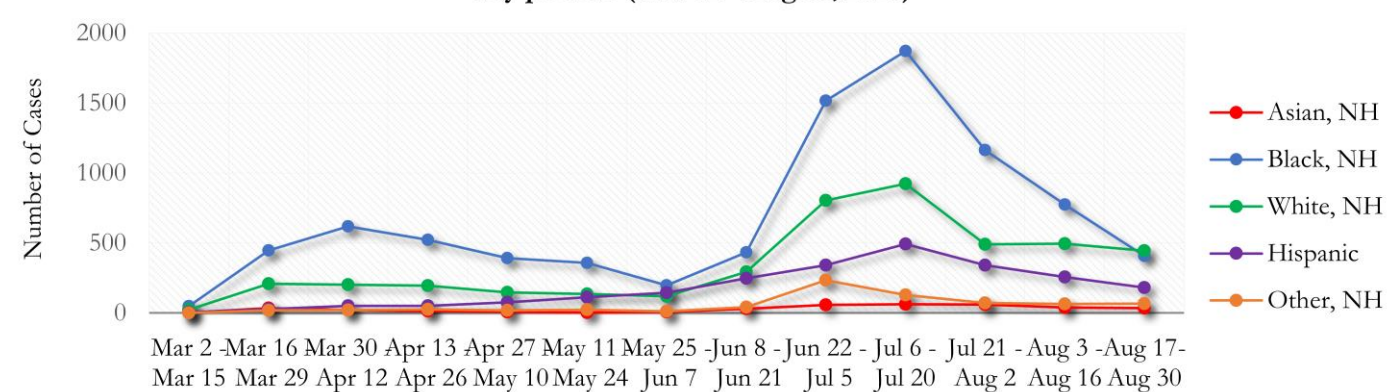
\*North - Includes all Fulton cities north of Atlanta metro (Alpharetta, Milton, Johns Creek, Roswell, Sandy Springs, Mountain Park)

\*South - Includes all Fulton cities south of Atlanta (College Park, Chattahoochee Hills, East Point, Hapeville, Palmetto, South Fulton, Fairburn, and Union City)

**Fig. 11. Trends in Gender Distribution of COVID -19 Diagnoses in Fulton County by 14-day periods (Mar 02 - Aug 30, 2020)**

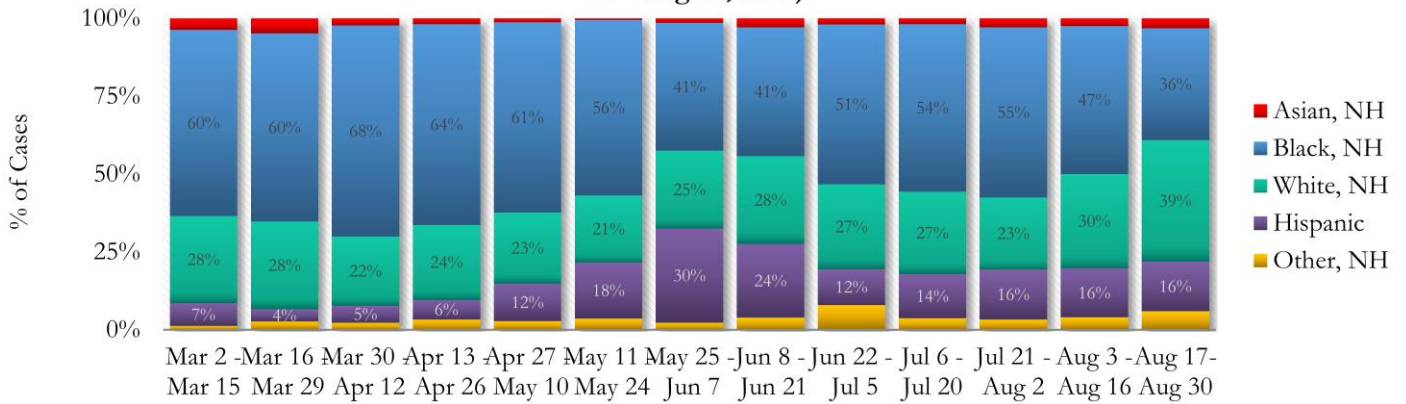


**Fig. 12. Trends in Racial Distribution of COVID -19 Diagnoses in Fulton County by 14-day periods (Mar 02 - Aug 30, 2020)**

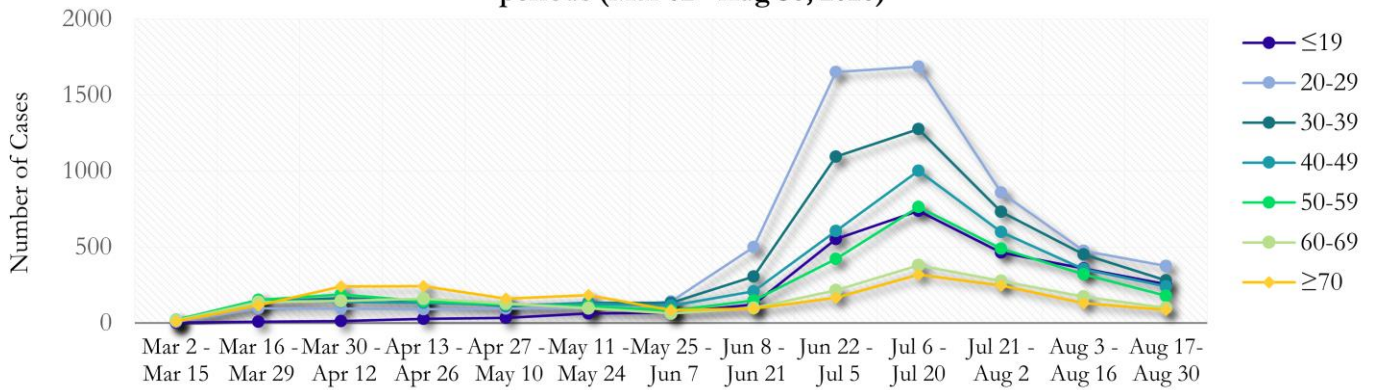


About 33% of COVID cases are missing data on patient race and ethnicity. For the first time since March, the majority of diagnoses made in the past two weeks were White-NH (39%) rather than Black-NH (36%).

**Fig. 13. Racial Distribution of COVID -19 Cases in Fulton County by 14-day periods (Mar 02 - Aug 30, 2020)**

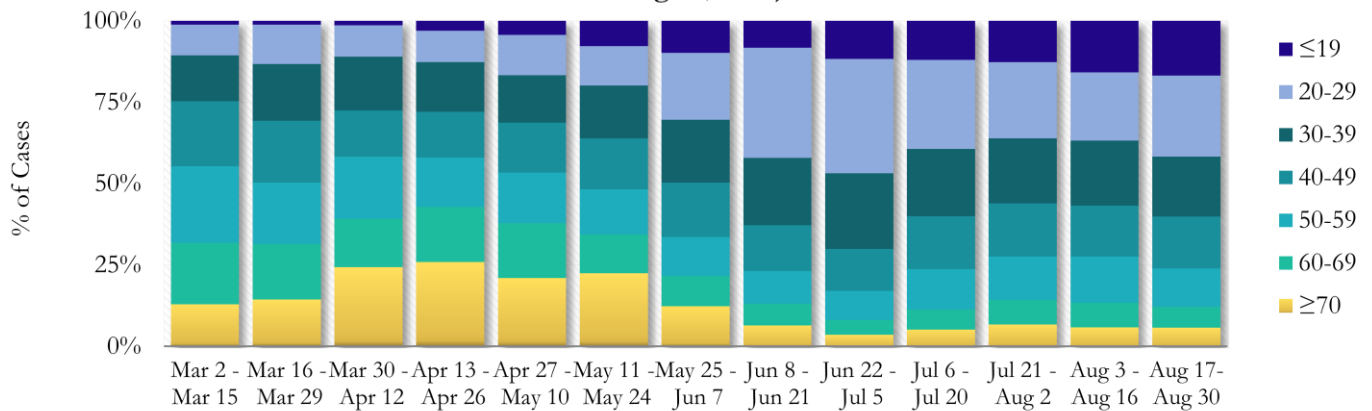


**Fig. 14. Trends in Age Distribution of COVID -19 Diagnoses in Fulton County by 14-day periods (Mar 02 - Aug 30, 2020)**



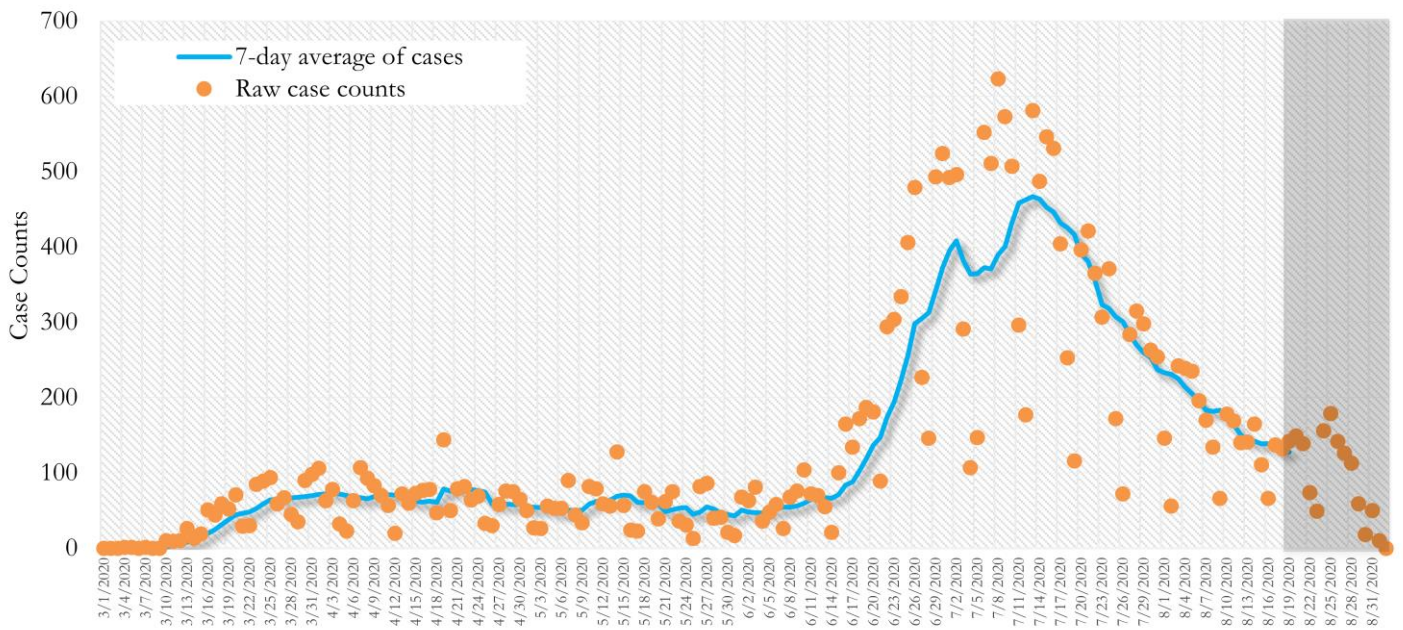
Earlier (March-May 2020) large proportions of reported cases were among persons aged 60 and older. However, starting in June, a higher number of cases were among persons aged between 20-29 years.

**Fig. 15. Age Distribution of COVID -19 Cases in Fulton County by 14-day periods (Mar 02 - Aug 30, 2020)**



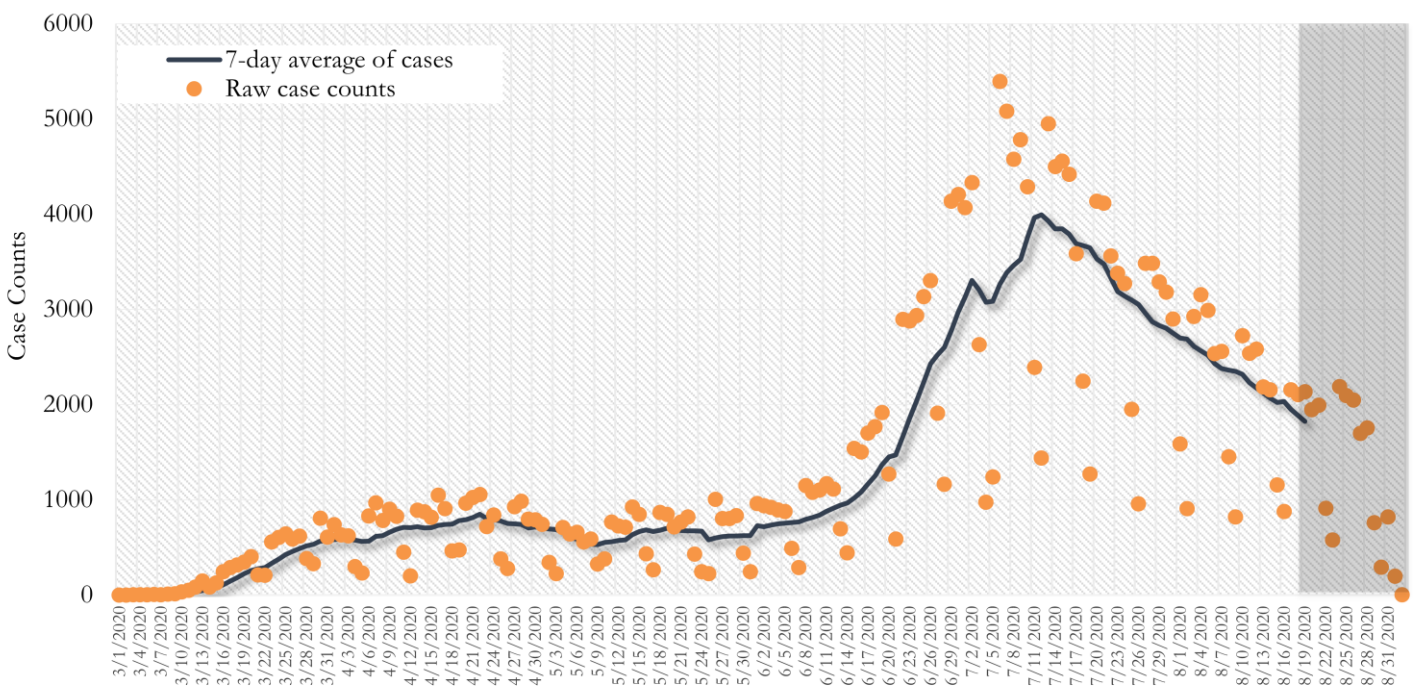
**TRENDS IN COVID-19 CASES, HOSPITALIZATIONS AND DEATHS (7-DAY MOVING AVE.)**

**Fig. 16. New COVID-19 Cases in Fulton County Daily (Averaged over 7 days)**



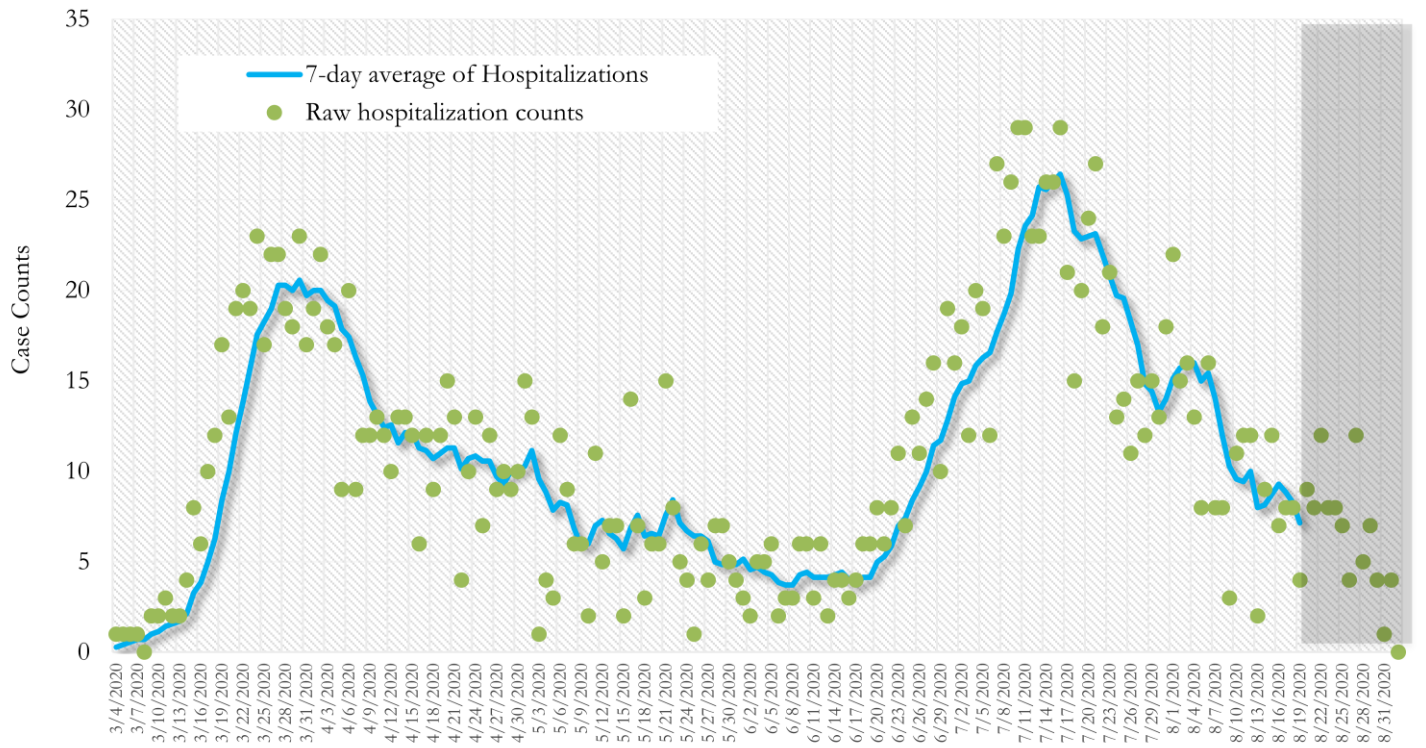
\*Date of collection of first positive sample used (report creation date used where sample collection date is missing). Graph above reflects the trend in COVID-19 diagnosis. Due to the high volume of testing in recent weeks, there have been delays in reporting lab results. Thus, the trend is subject to change as more lab results get added to the state surveillance database.

**Fig. 17. New COVID-19 Cases in Georgia State Daily (Averaged over 7 days)**



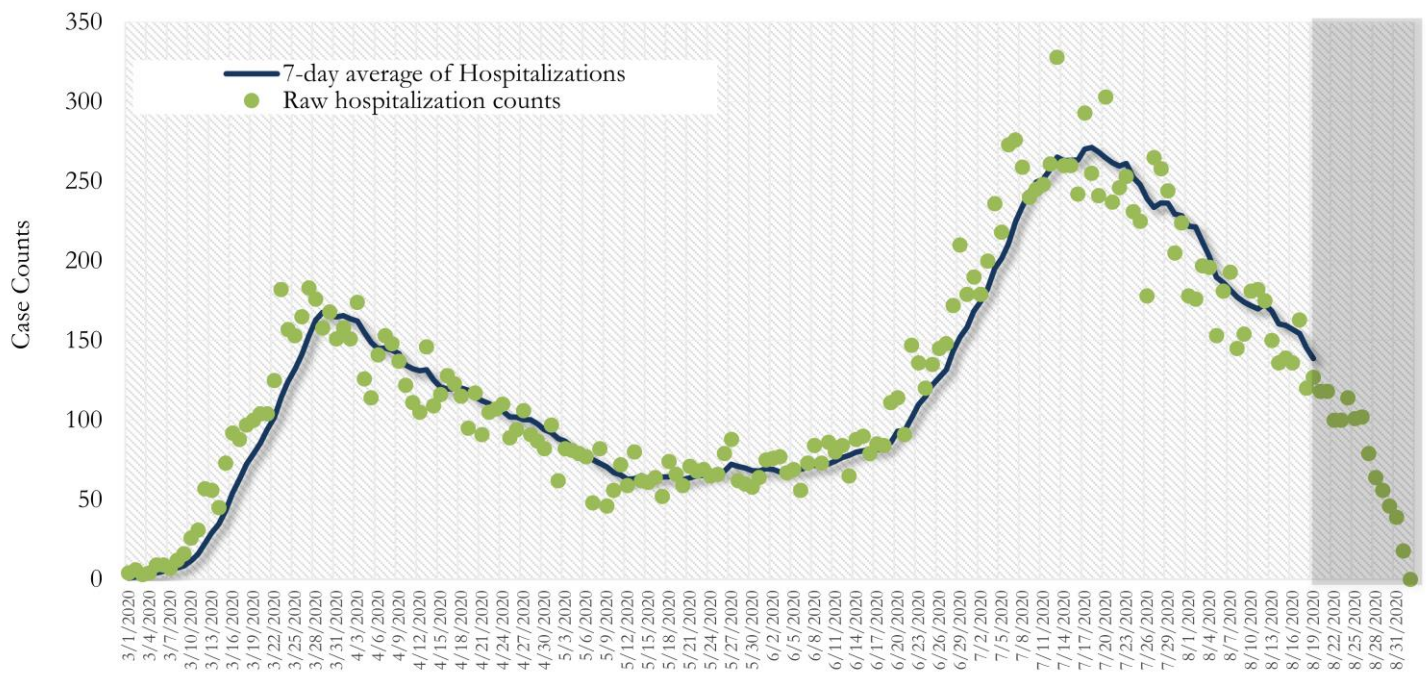
\*Date of collection of first positive sample used (report creation date used where sample collection date is missing). Graph above reflects the trend in COVID-19 diagnosis. Due to the high volume of testing in recent weeks, there have been delays in reporting lab results. Thus, the trend is subject to change as more lab results get added to the state surveillance database.

**Fig. 18. COVID-19 Hospitalizations in Fulton County Daily (Averaged over 7 days)**



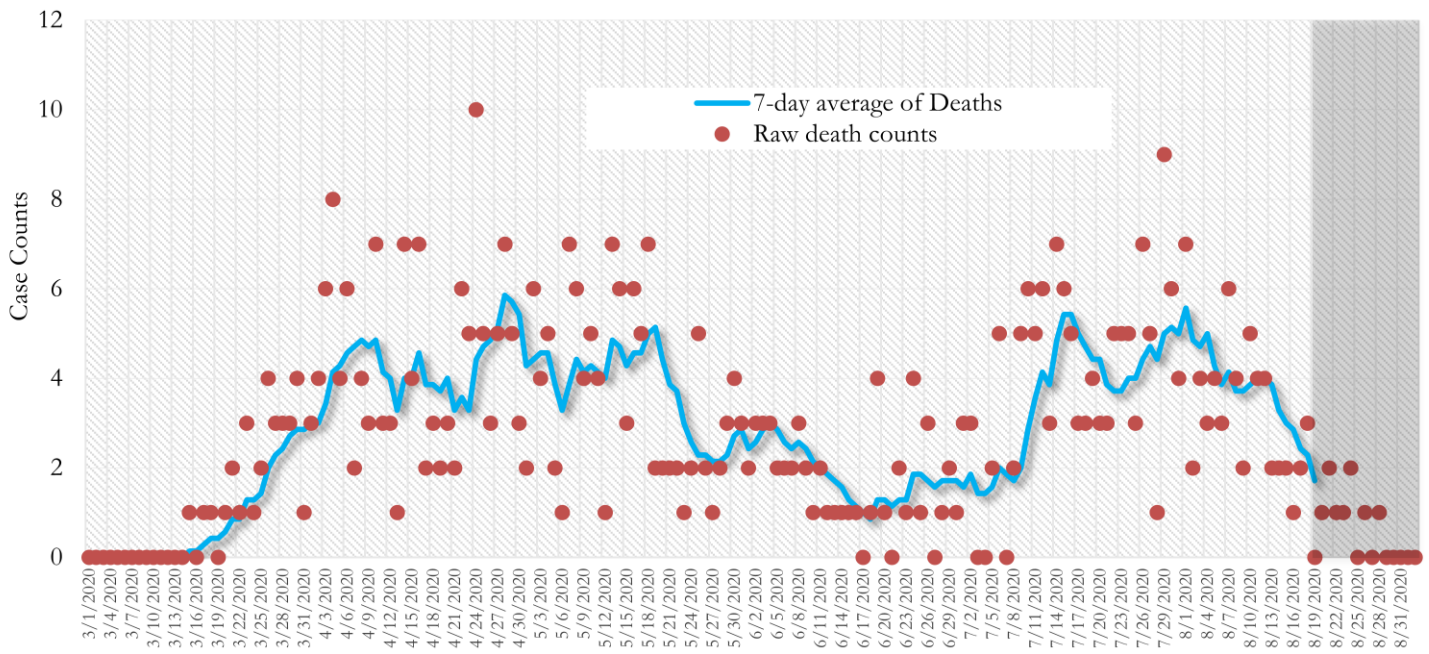
\*Reported date of hospital admission used. Graph above reflects the trend in COVID-19 hospitalizations. Due to the high volume of new cases being added daily, there have been delays in reporting hospitalization data. Thus, the trend is likely to change as more hospitalization data is reported in the state surveillance database.

**Fig. 19. COVID-19 Hospitalizations in Georgia State Daily (Averaged over 7 days)**



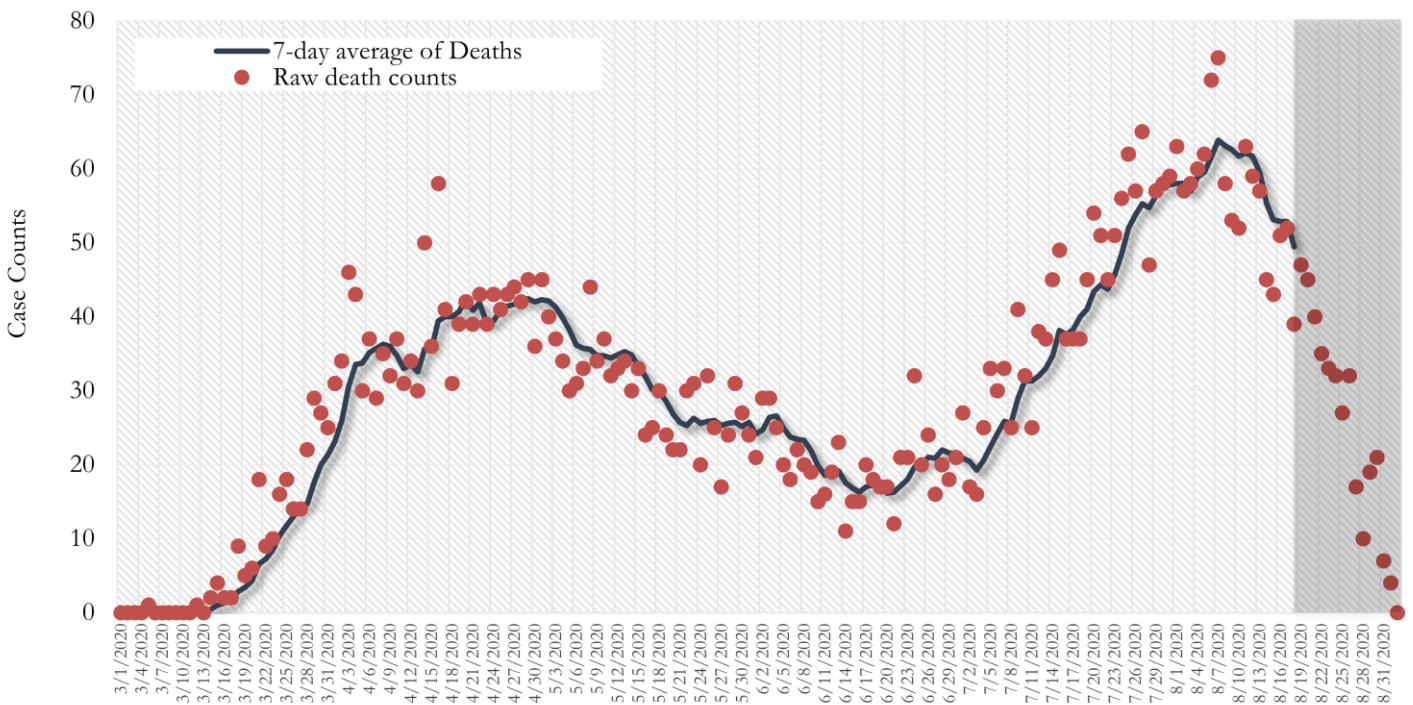
\*Reported date of hospital admission used. Graph above reflects the trend in COVID-19 hospitalizations. Due to the high volume of new cases being added daily, there have been delays in reporting hospitalization data. Thus, the trend is likely to change as more hospitalization data is reported in the state surveillance database.

**Fig. 20. COVID-19 Deaths in Fulton County Daily (Averaged over 7 days)**



\* Reported date of death used. Graph above reflects the trend in deaths attributed to COVID-19. The trend is likely to change as more data on deaths among persons with COVID-19 is reported in the state surveillance database.

**Fig. 21. COVID-19 Deaths in Georgia State Daily (Averaged over 7 days)**

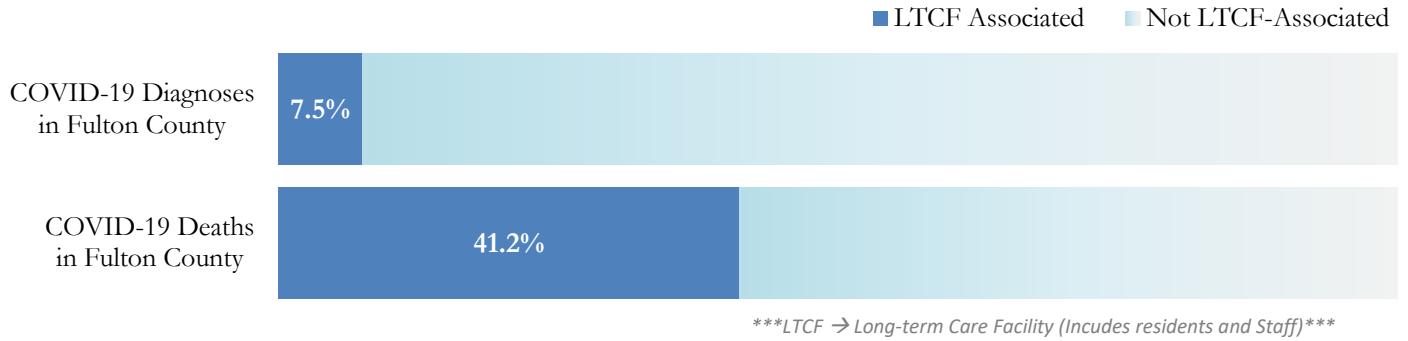


\* Reported date of death used. Graph above reflects the trend in deaths attributed to COVID-19. The trend is likely to change as more data on deaths among persons with COVID-19 is reported in the state surveillance database.

## COVID-19 IN LONG-TERM CARE FACILITIES IN FULTON COUNTY

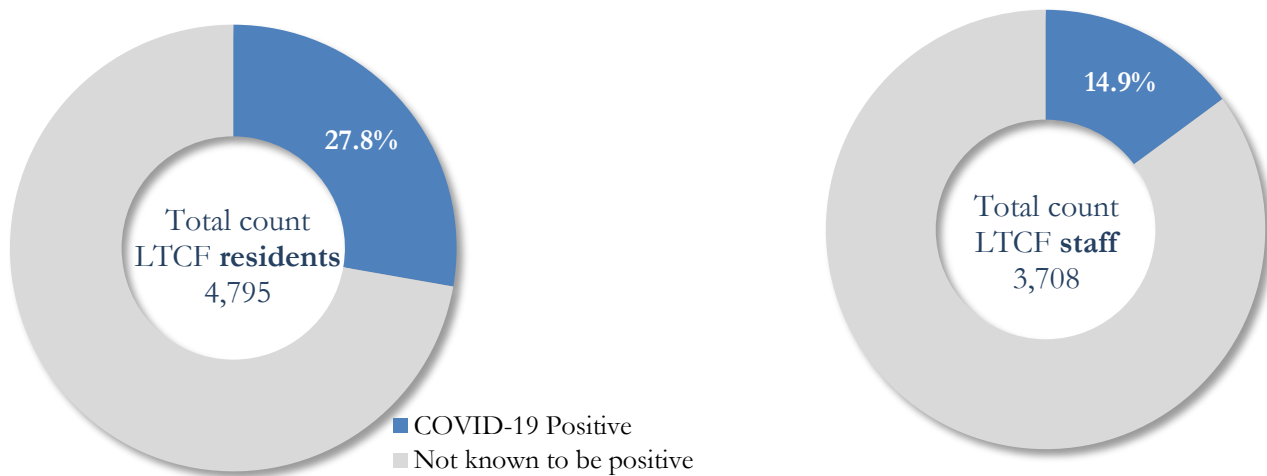
Older persons (aged 65 years and older) and persons who live in nursing homes or other long-term care facilities seem to be at higher risk for developing more serious complications from COVID-19. Extra precautions are recommended for individuals within this risk groups – Centers for Disease Control and Prevention (CDC 2020) <https://www.cdc.gov/coronavirus/2019-ncov/need-extra-precautions/people-at-higher-risk.html>

Fig. 22. COVID-19 Diagnoses and Deaths in Fulton County Associated with Long-Term Care Facilities



## COVID-19 POSITIVITY:

Fig. 23. COVID-19 Positivity at 59 reporting Long-Term Care Facilities (LTCF) in Fulton County



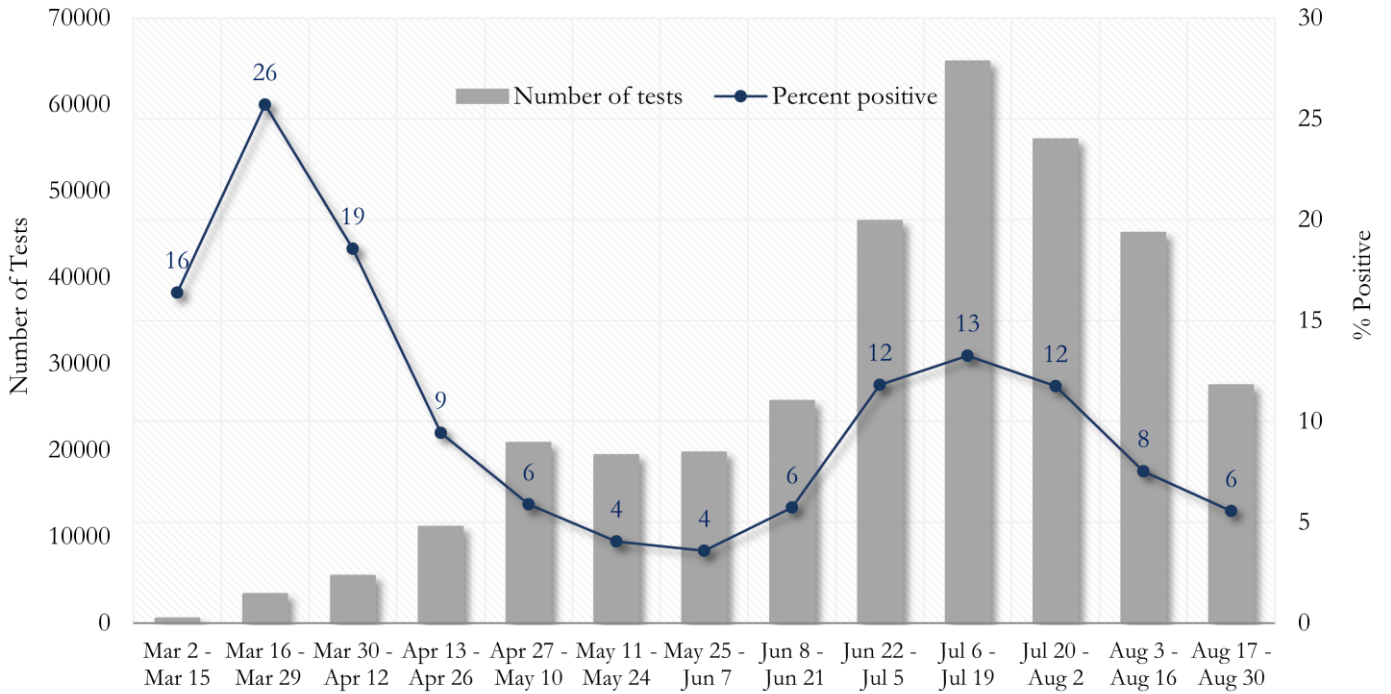
COVID-19 Cases, Hospitalizations, and Deaths among 59 reporting Long-Term Care Facilities in Fulton County

	LTCF Residents (n=4,795)			LTCF Staff (n=3,701)		
	Cases	Hospitalizations	Deaths	Cases	Hospitalizations	Deaths
Average (count per fac.) <sup>1</sup>	23	5	4	9	1	<0.1
Median (count per fac.) <sup>1</sup>	9	3	1	4	0	0
Lowest counts	1	0	0	0	0	0
Highest counts	137	48	29	64	8	2
Total Count	1331 (27.8%) <sup>a</sup>	301 (22.6%) <sup>b</sup>	212 (15.9%) <sup>b</sup>	552 (14.9%) <sup>a</sup>	32 (5.8%) <sup>b</sup>	5 (<1.0%) <sup>b</sup>

<sup>a</sup> Percentage shown reflects proportion of total residents/staff tested who were positive (i.e. COVID-19 Positivity). | <sup>b</sup> Percentages shown are proportions of persons residents/staff diagnosed with COVID-19 who were hospitalized or died after diagnoses.

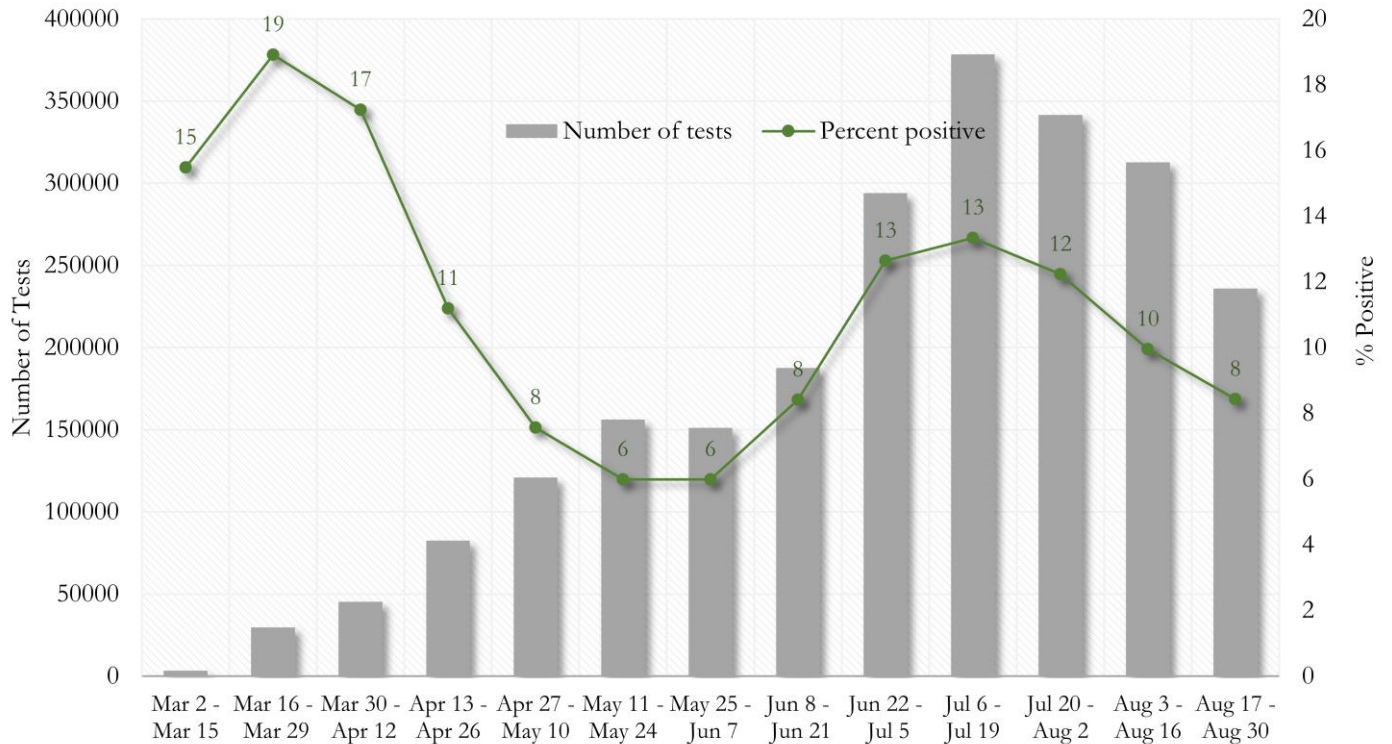
**COVID-19 TESTING AND POSITIVITY IN FULTON COUNTY**

**Fig. 24. Trends in Positive COVID-19 Tests in Fulton County by 14-day Periods**



\*Data on Polymerase Chain Reaction (PCR) tests only included.

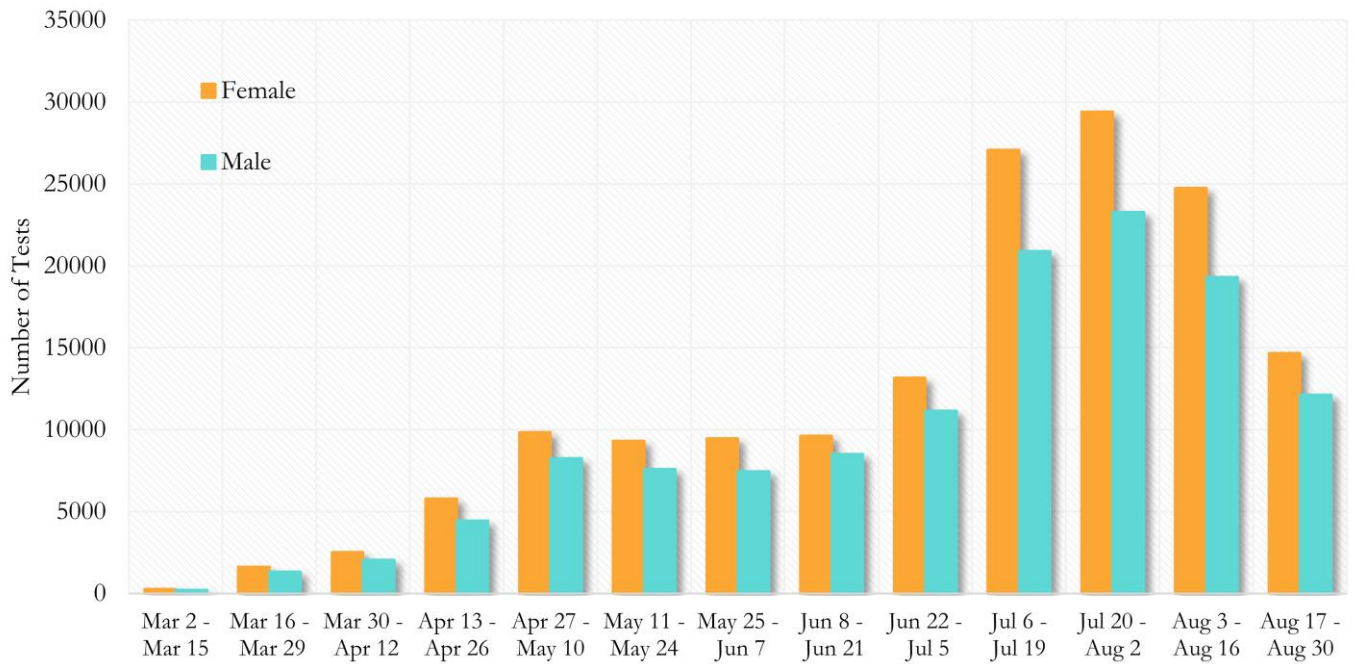
**Fig. 25. Trends in Positive COVID-19 Tests in Georgia by 14-day Periods**



\*Data on Polymerase Chain Reaction (PCR) tests only included.

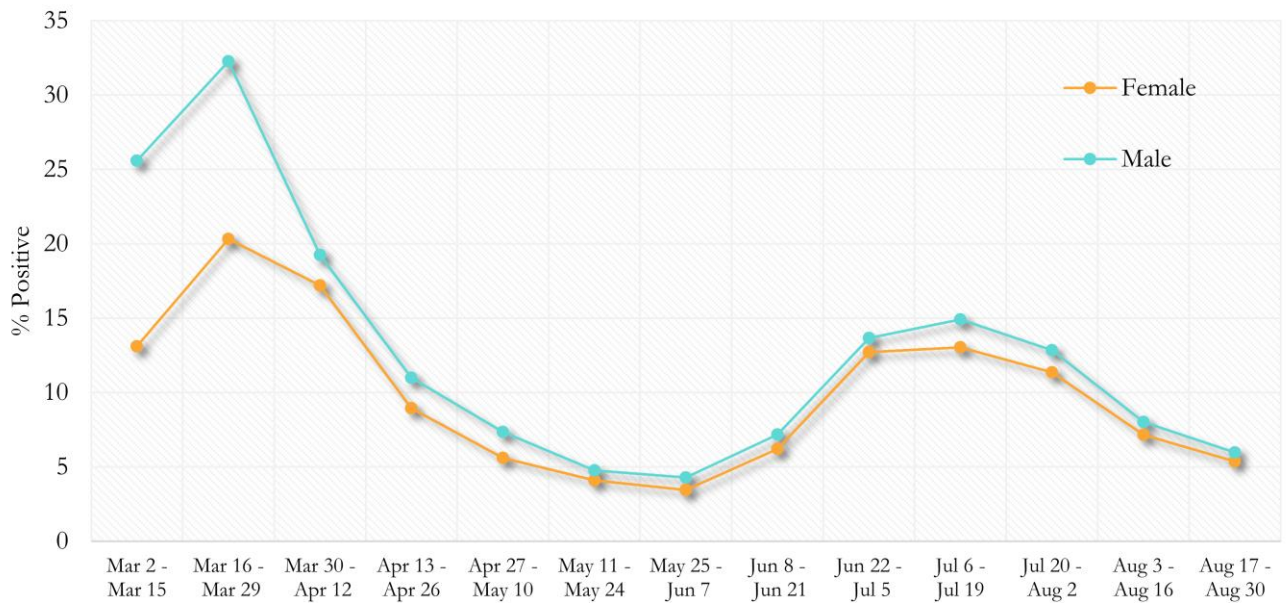


**Fig. 26. COVID-19 Tests by Gender in Fulton County by 14-day Periods**



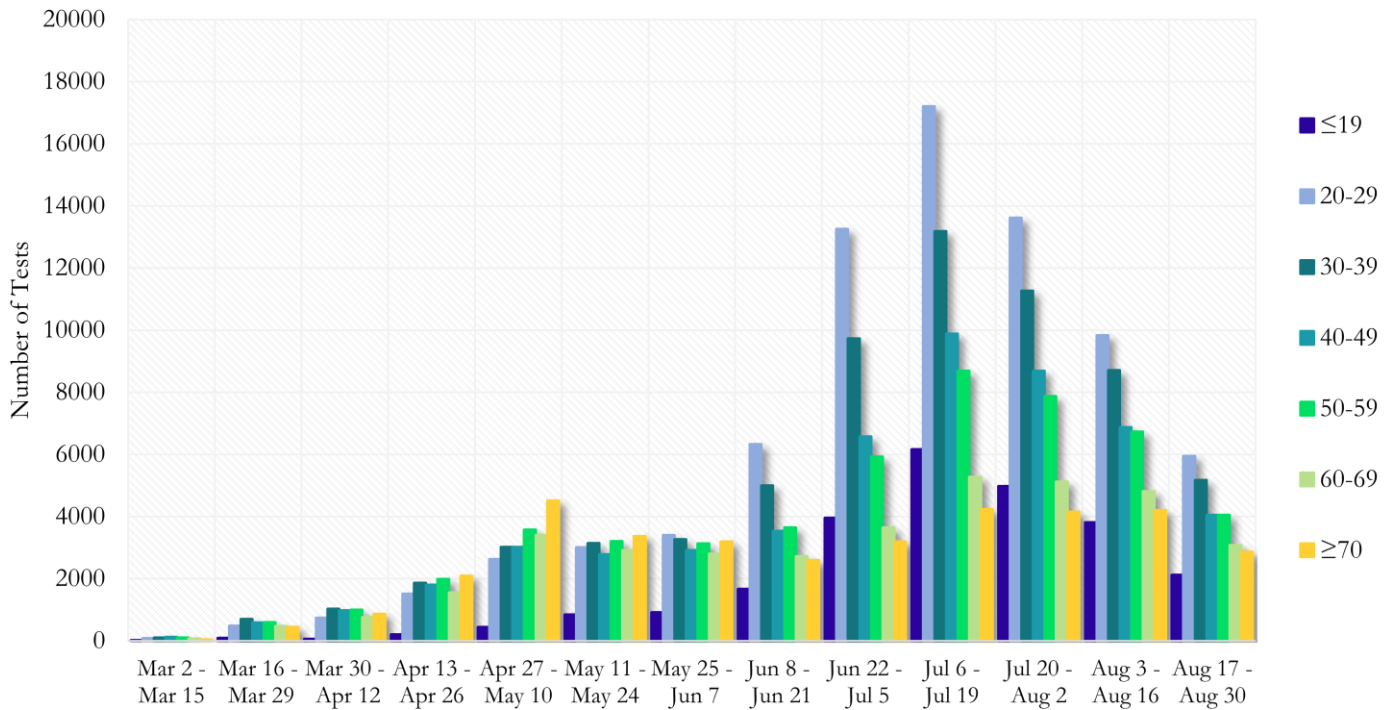
\*Data on Polymerase Chain Reaction (PCR) tests only included.

**Fig. 27. Percent Positive COVID-19 Tests by Gender in Fulton County by 14-day Periods**



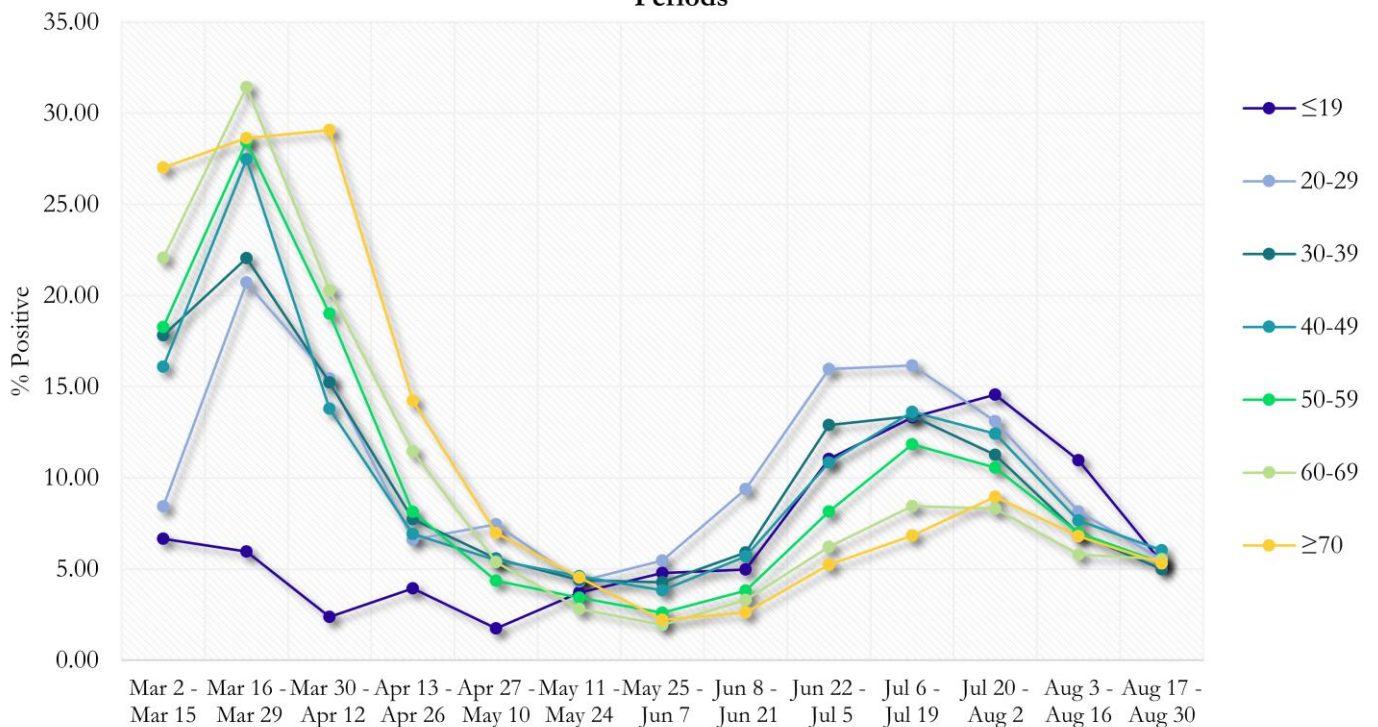
\*Data on Polymerase Chain Reaction (PCR) tests only included.

**Fig. 28. COVID-19 Tests by Age in Fulton County by 14-day Periods**



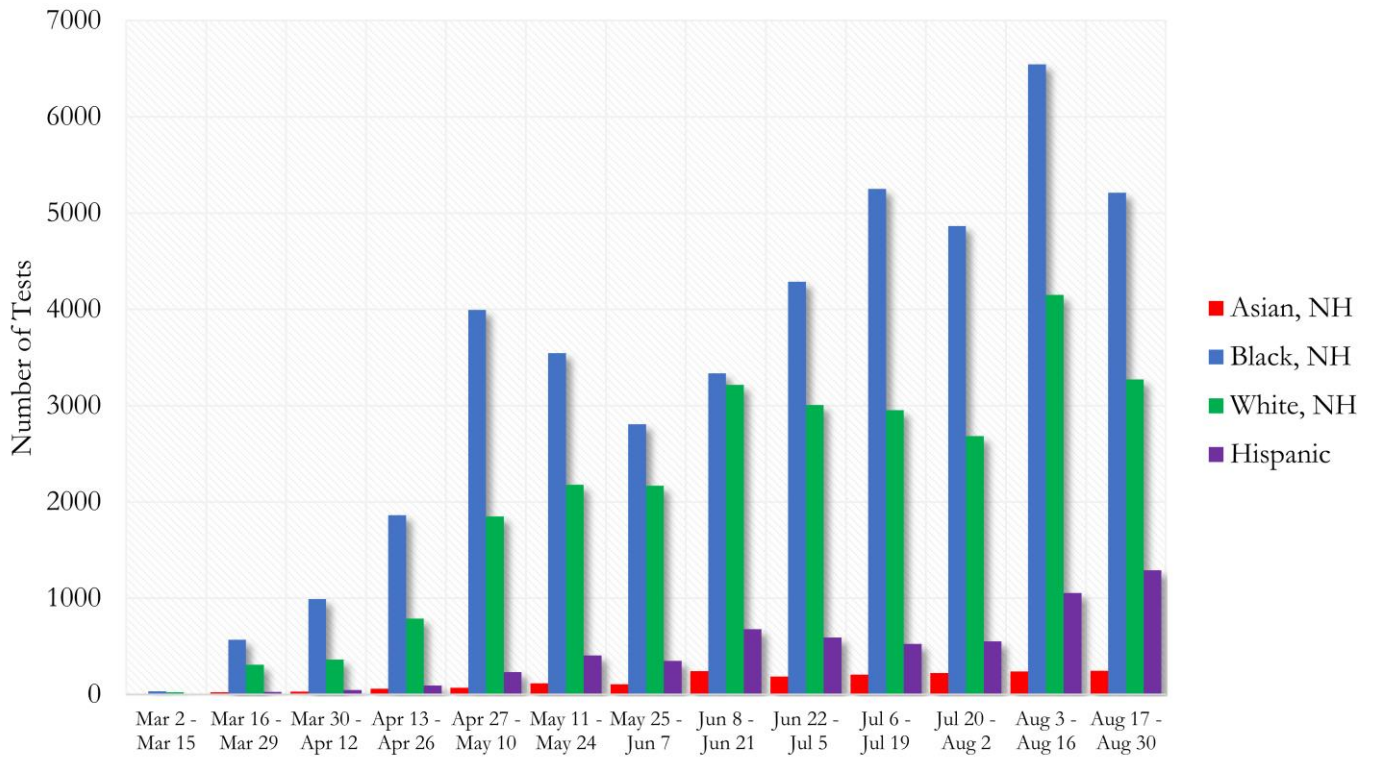
\*Data on Polymerase Chain Reaction (PCR) tests only included.

**Fig. 29. Percent Positive COVID-19 Tests by Age Group in Fulton County by 14-day Periods**



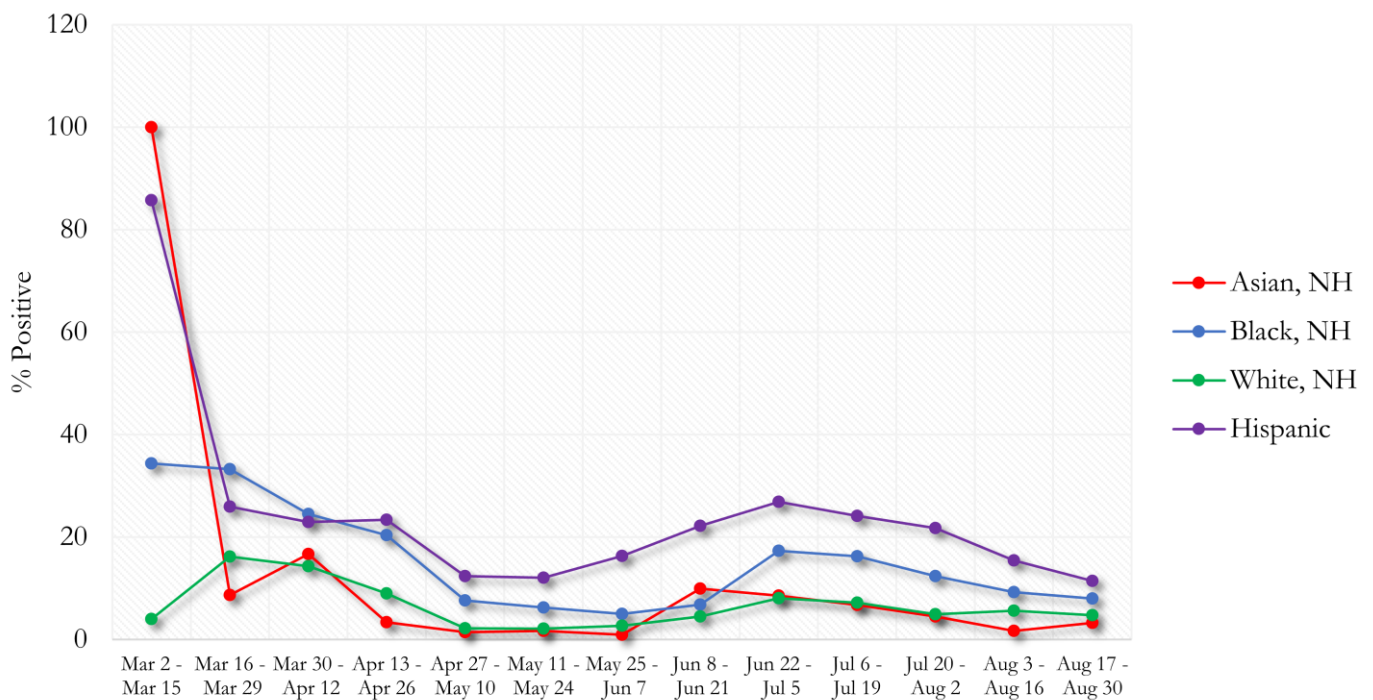
\*Data on Polymerase Chain Reaction (PCR) tests only included.

**Fig. 30. COVID-19 Tests by Race and Ethnicity in Fulton County by 14-day Periods**



\*Data on Polymerase Chain Reaction (PCR) tests only included.

**Fig. 31. Percent Positive COVID-19 Tests by Race and Ethnicity in Fulton County by 14-day Periods**



\*Data on Polymerase Chain Reaction (PCR) tests only included.