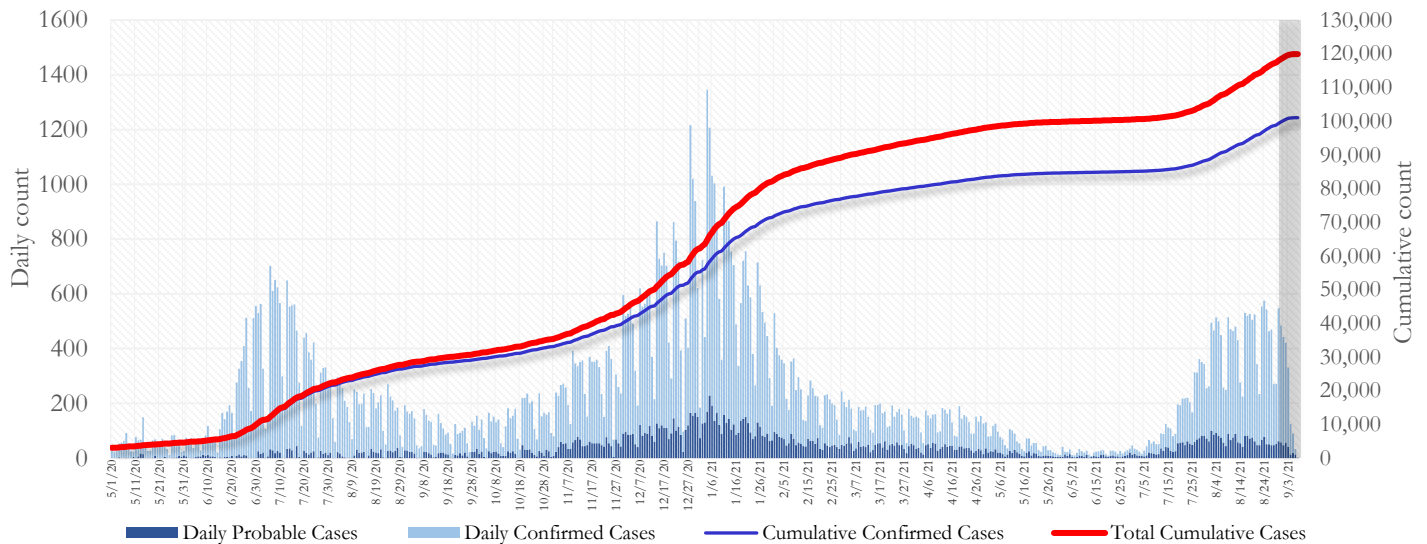


## SUMMARY

- As of September 7, 2021, Fulton County has recorded **101,134 confirmed cases** and **18,861 probable cases** of COVID-19.
- Figure 1 shows both confirmed and probable case counts but the ensuing tables and figures use data from **confirmed cases only**.
- As of September 7, 2021, Fulton County has recorded **1,428 confirmed COVID-19 deaths**. 171 deaths are currently under review by GA DPH to confirm cause of death.
- By city, new confirmed COVID-19 case rates range from 324.0 per 100,000 persons (Johns Creek) to 1378.8 per 100,000 persons (Union City). [**Fulton County Diagnoses Rates (per 100,000 persons): Cumulative – 9200.9; Incidence – 539.5**]. See map showing incident case rate by ZIP code on Pg.7.
- Of all PCR testing done in Fulton County between August 16 and August 29, the **percent positivity rate was 11.7%**.

**Fig 1. Daily and Cumulative Confirmed and Probable COVID-19 cases in Fulton County, GA**



Counts shown reflect the number of cases as of 9:00 am on 9/7/21 using the date of first positive sample collection. Where date of sample collection was not available or missing, the date of report creation in GA SendSS was used instead. The Georgia Department of Health defines a confirmed cases as someone with a positive molecular test, also known as PCR. A probable case is defined as a positive antigen test, though probable cases are still considered positive cases and individuals who tested positive through an antigen test should follow all DPH isolation and quarantine guidance. **Note:** Delays in data reporting may cause changes in data counts, particularly in the shaded portion. Data throughout this report are preliminary and subject to ongoing data cleaning processes, and thus are subject to change.

**THE FOLLOWING ANALYSES (PAGES 1-19) ARE USING DATA ON CONFIRMED CASES ONLY.**

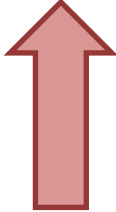
## DISTRIBUTION OF COVID-19 CASES BY REGION

**New cases:** 42% of the new COVID-19 cases in the past 2 weeks occurred in Atlanta while 25% and 30% occurred in the Northern and Southern regions of the county respectively.

Fulton Region	% Cumulative count	% New cases*
Atlanta	42.9%	41.7%
North <sup>1</sup>	32.2%	24.8%
South <sup>2</sup>	21.6%	30.4%
Unincorporated/Unknown	3.3%	3.2%

<sup>1</sup>Includes all Fulton County cities north of Atlanta (Alpharetta, Johns Creek, Milton, Mountain Park, Roswell, Sandy Springs.) <sup>2</sup>Includes all cities south of Atlanta (Chattahoochee Hills, College Park, East Point, Fairburn, Hapeville, Palmetto, South Fulton, and Union City) \***New cases:** Cases diagnosed in the past 2 weeks only (between 8/18/21 – 8/31/21).

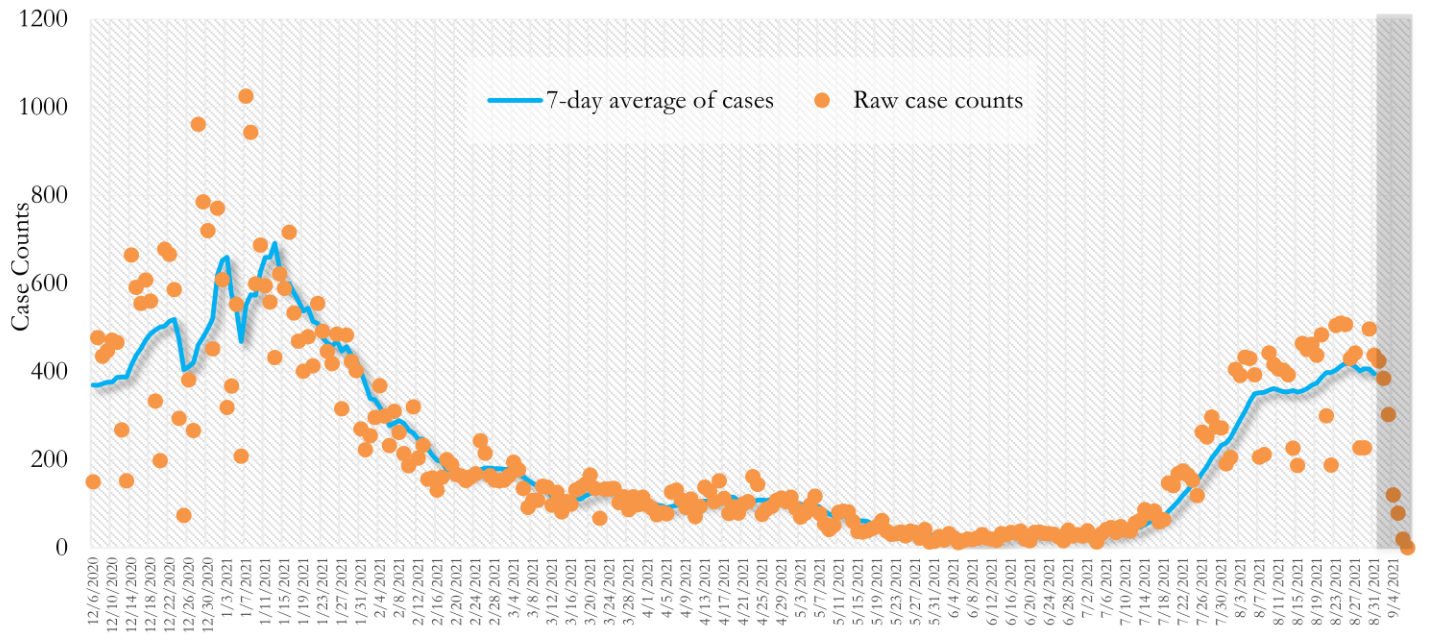
**In the recent two week reporting period (8/18-8/31), there were more new cases of COVID-19 in Fulton County than the previous two weeks (8/4-8/17).**



*\*Delayed a week to account for testing results turnaround time.*

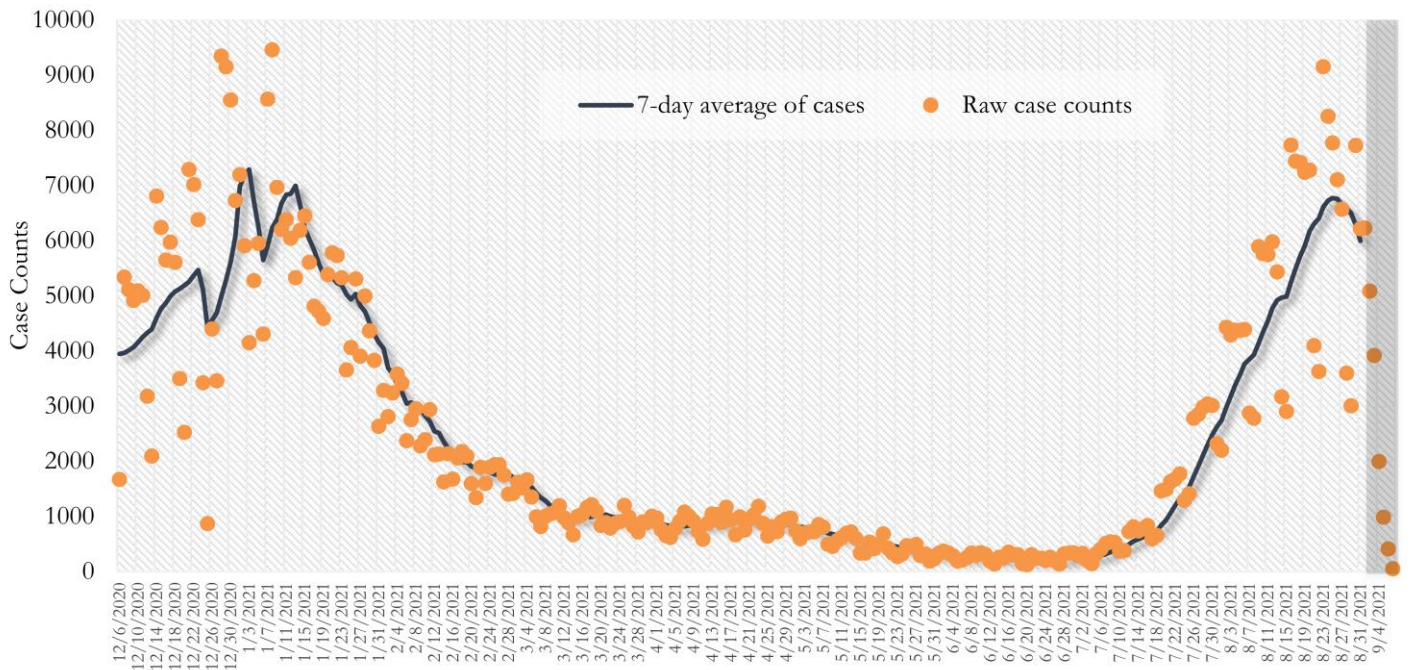
**TRENDS IN COVID-19 CASES, HOSPITALIZATIONS AND DEATHS (7-DAY MOVING AVE.)**

**Fig. 2. New COVID-19 Cases in Fulton County Daily (Averaged over 7 days)**



\*Date of collection of first positive sample used (report creation date used where sample collection date is missing). Graph above reflects the trend in COVID-19 diagnosis. Due to the high volume of testing in recent weeks, there have been delays in reporting lab results. Thus, the trend is subject to change as more lab results get added to the state surveillance database.

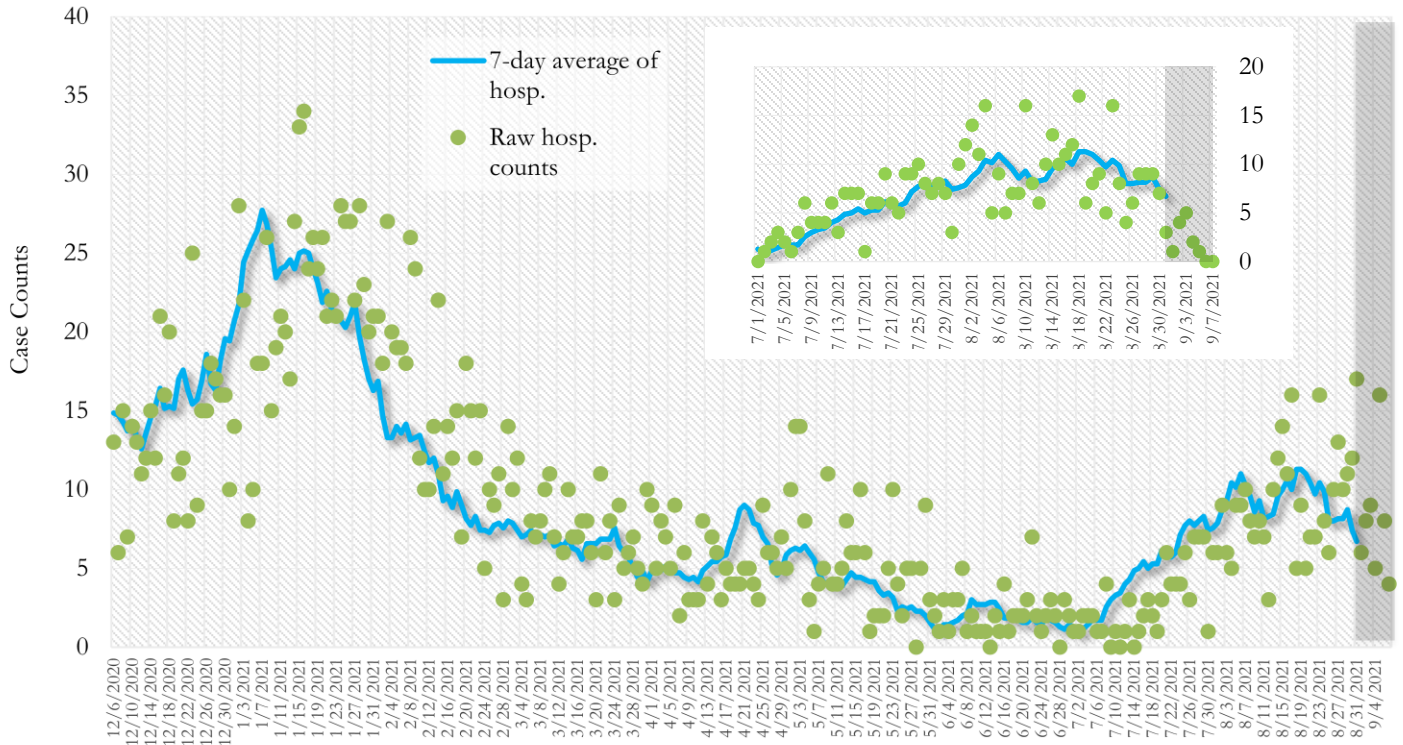
**Fig. 3. New COVID-19 Cases in Georgia State Daily (Averaged over 7 days)**



\*Date of collection of first positive sample used (report creation date used where sample collection date is missing). Graph above reflects the trend in COVID-19 diagnosis. Due to the high volume of testing in recent weeks, there have been delays in reporting lab results. Thus, the trend is subject to change as more lab results get added to the state surveillance database.

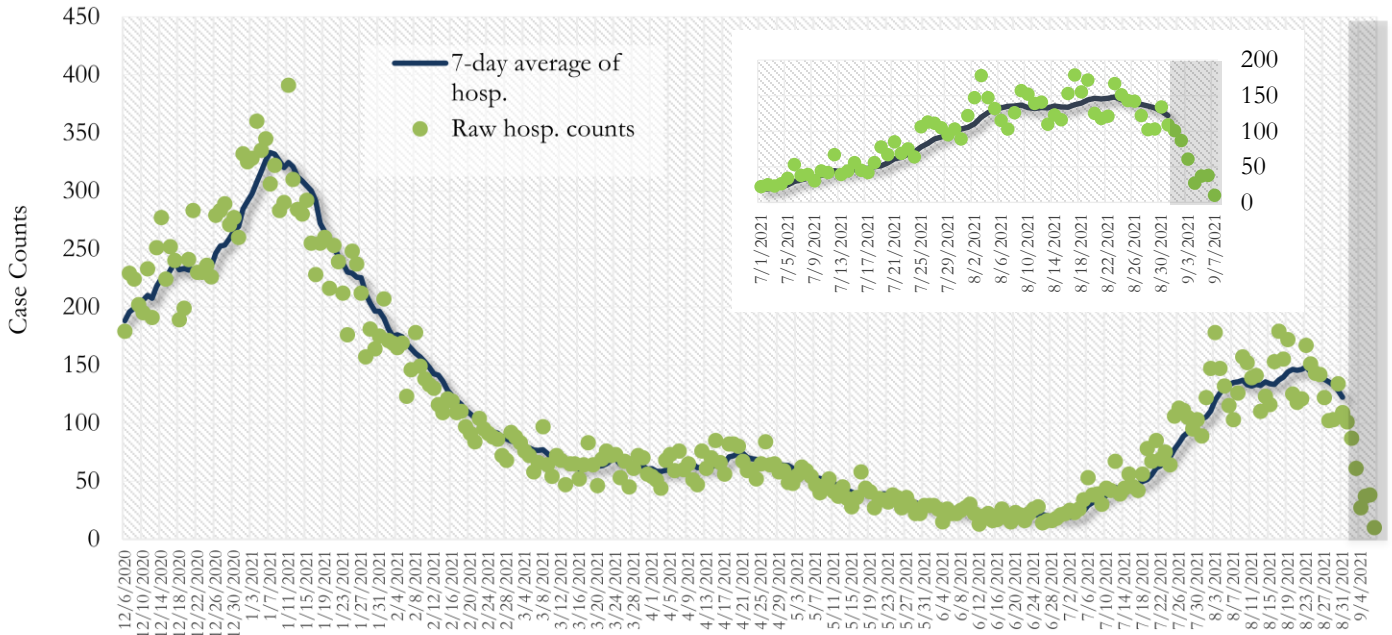


**Fig. 4. COVID-19 Hospitalizations in Fulton County Daily (Averaged over 7 days)**



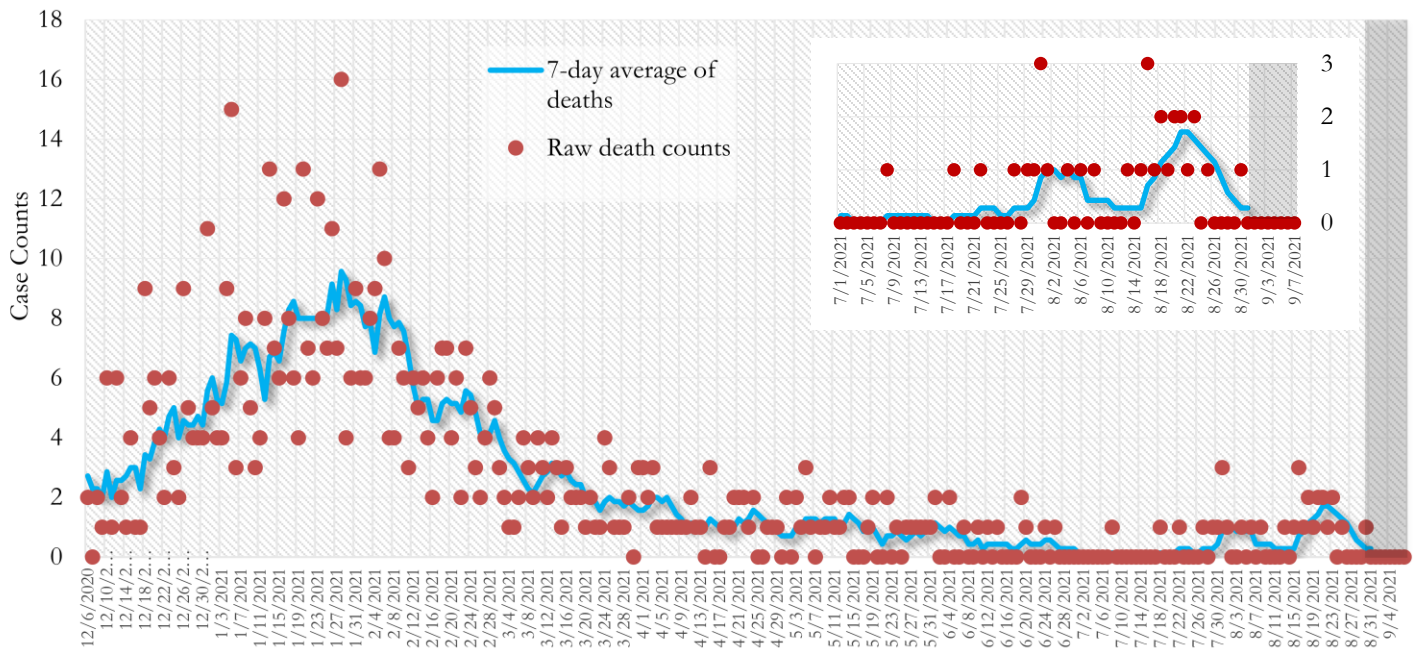
\*Reported date of hospital admission used. Graph above reflects the trend in COVID-19 hospitalizations. Due to the high volume of new cases being added daily, there have been delays in reporting hospitalization data. Thus, the trend is likely to change as more hospitalization data is reported in the state surveillance database.

**Fig. 5. COVID-19 Hospitalizations in Georgia State Daily (Averaged over 7 days)**



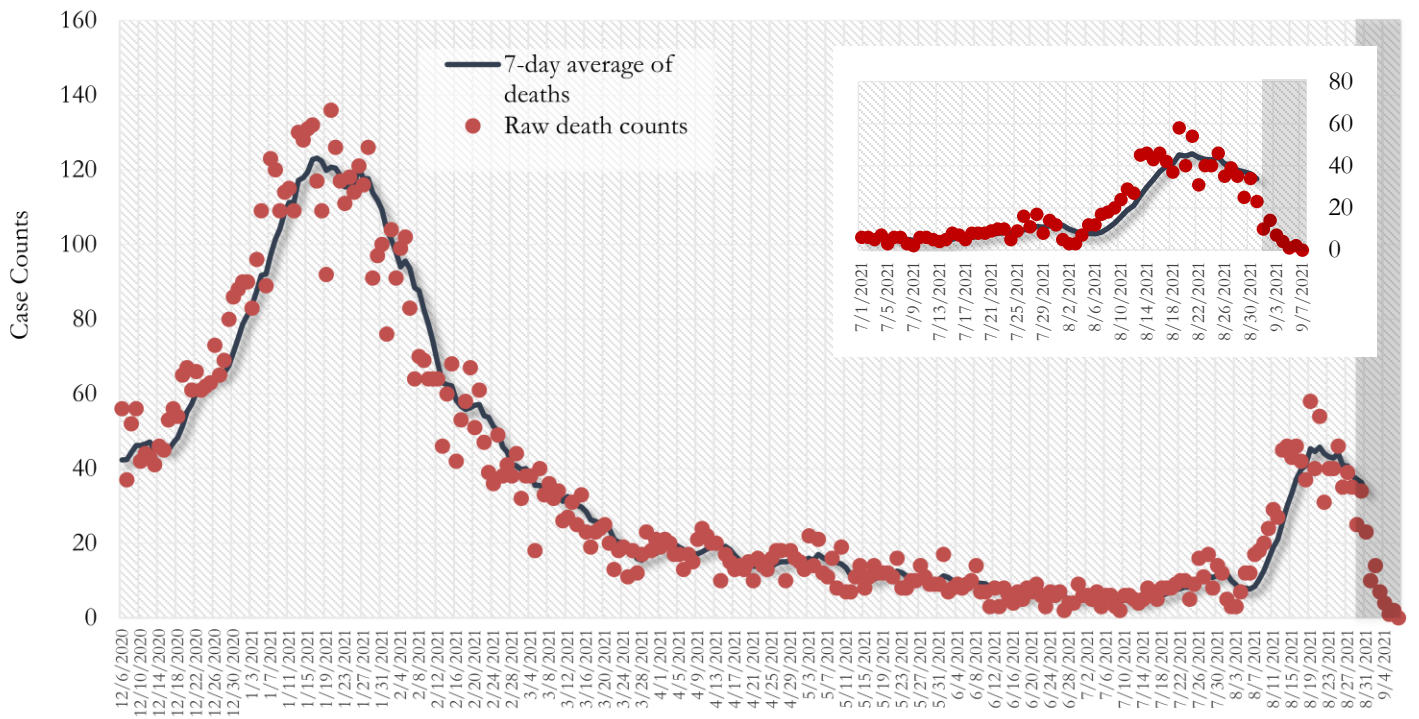
\*Reported date of hospital admission used. Graph above reflects the trend in COVID-19 hospitalizations. Due to the high volume of new cases being added daily, there have been delays in reporting hospitalization data. Thus, the trend is likely to change as more hospitalization data is reported in the state surveillance database.

Fig. 6. COVID-19 Deaths in Fulton County Daily (Averaged over 7 days)



\*Reported date of death used. Graph above reflects the trend in deaths attributed to COVID-19. The trend is likely to change as more data on deaths among persons with COVID-19 is reported in the state surveillance database.

Fig. 7. COVID-19 Deaths in Georgia State Daily (Averaged over 7 days)



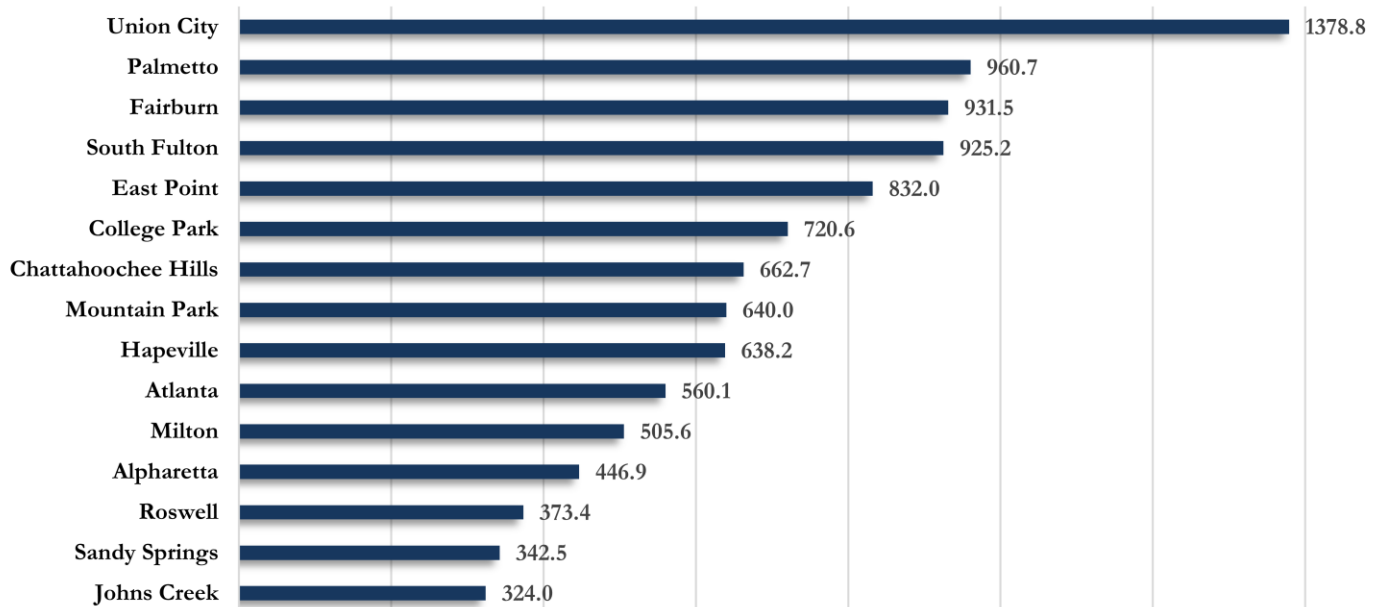
\*Reported date of death used. Graph above reflects the trend in deaths attributed to COVID-19. The trend is likely to change as more data on deaths among persons with COVID-19 is reported in the state surveillance database.

## COVID-19 CASE COUNTS AND RATES BY CITY

	Recent 14-day reporting period <sup>1</sup>	Preceding 14-day reporting period	% Change from preceding 14 days (%) <sup>2</sup>	14-Day Incidence Rate <sup>3</sup>
	8/18-8/31	8/4-8/17		
Alpharetta	289	173	↑ 67.1%	446.9
Atlanta	2471	1921	↑ 28.6%	560.1
Chattahoochee Hills	19	10	↑ 90.0%	662.7
College Park	100	61	↑ 63.9%	720.6
East Point	291	200	↑ 45.5%	832.0
Fairburn	137	74	↑ 85.1%	931.5
Hapeville	42	42	-	638.2
Johns Creek	271	236	↑ 14.8%	324.0
Milton	193	123	↑ 56.9%	505.6
Mountain Park	<10	<10	↑ 300.0%	640.0 <sup>4</sup>
Palmetto	42	17	↑ 147.1%	960.7 <sup>4</sup>
Roswell	352	294	↑ 19.7%	373.4
Sandy Springs	361	316	↑ 14.2%	342.5
South Fulton	880	643	↑ 36.9%	925.2
Union City	289	165	↑ 75.2%	1378.8
Unknown	188	176	-	-

<sup>1</sup>**New cases:** Cases diagnosed in most recent 14 days (based on reported dates of positive sample collection). To allow for lag in reporting results of new diagnoses from samples collected in the most recent week, data used for incident diagnoses analyses were moved back by one week. <sup>2</sup>**% change:** These reflect the percentage increase or decrease in new diagnoses between the 14 days preceding the most recent 7 days and the 14 days preceding that. <sup>3</sup>**(Incidence) Rate:** Rate of new diagnoses in the last 14 day period preceding the immediate past week. **\*\*Data cleaning** (either during case interviews or address geo-coding) may lead to reassignment of few cases from one territory to another based on their corrected addresses. These may appear as "decreases" when compared to the previous counts. These do not reflect errors in the data collection or analysis process but only reflect the minor day-to-day fluctuations in case counts that arise in an evolving public health database like COVID's. <sup>4</sup>Incidence rate is skewed high due to small population. **Note:** All data reported are preliminary and subject to change.

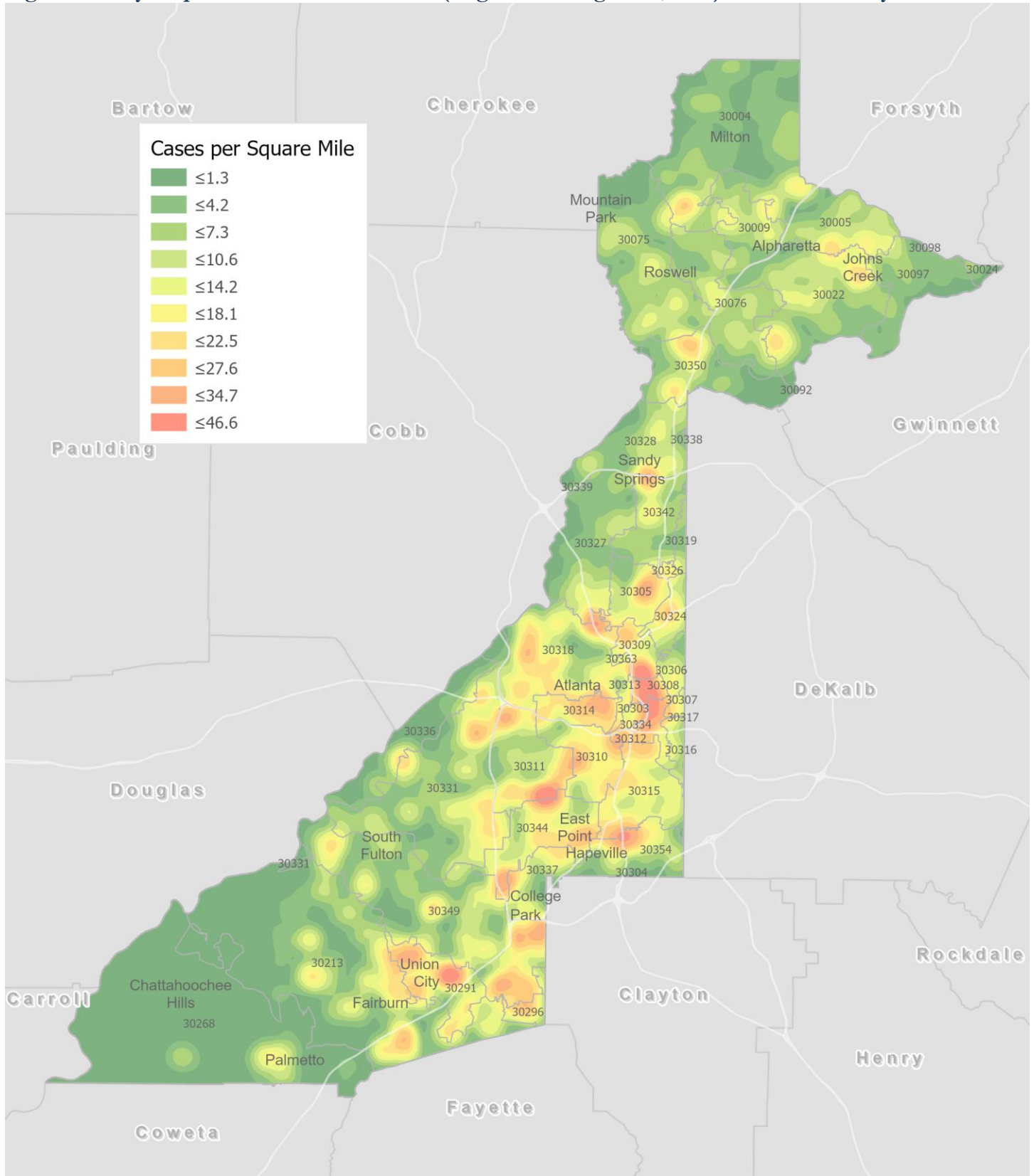
Fig. 8. Incidence Rates by Fulton City for Recent 14-day Reporting Period



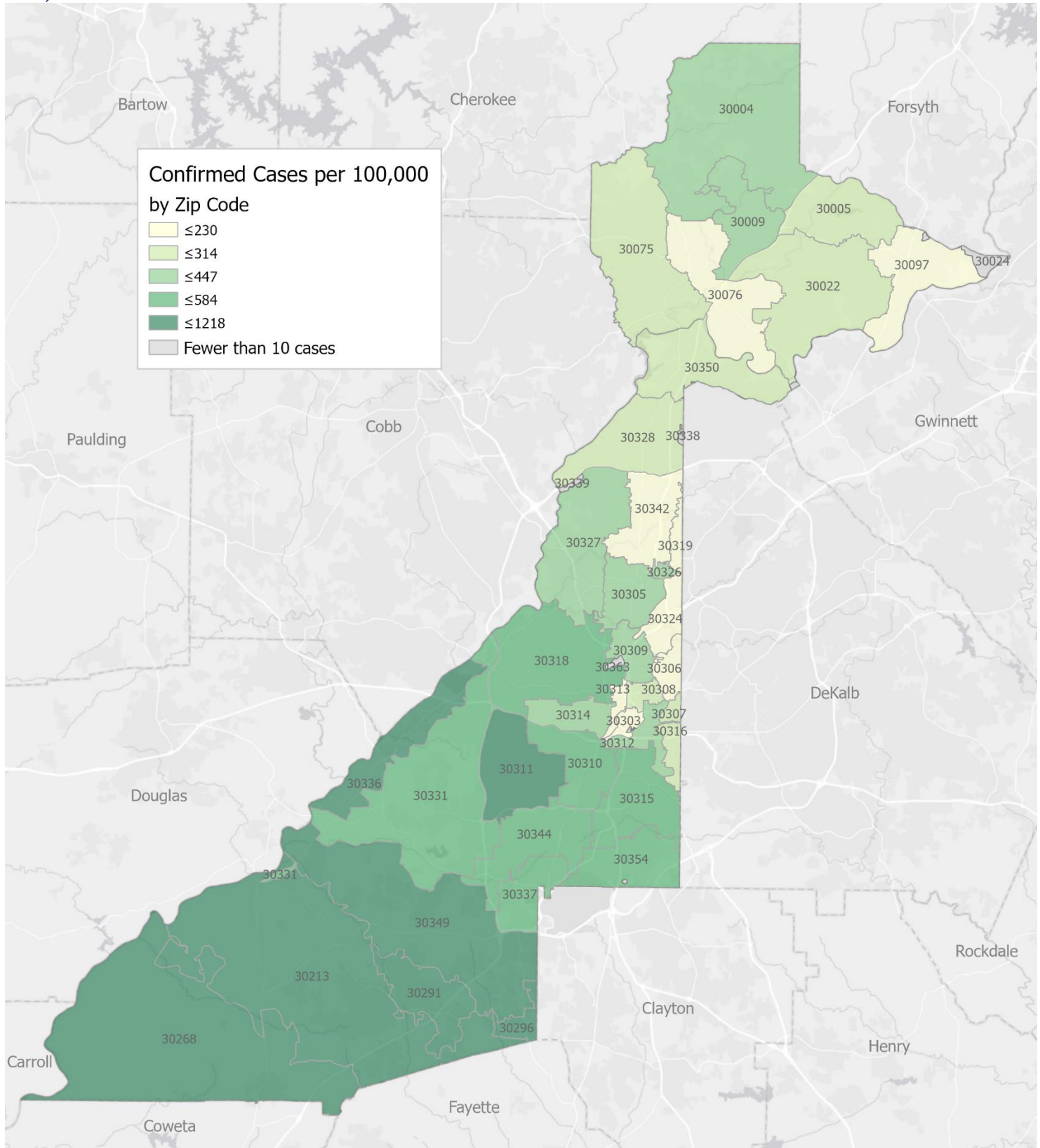
\*Rates shown are per 100,000 persons | All data shown are preliminary and are subject to change as testing results get updated.



Fig. 9. Density Map – New COVID-19 Cases (August 18 – August 31, 2021) in Fulton County



**Fig. 10. New COVID-19 Diagnoses Rates (per 100,000 population) by Zip Code (August 18 – August 31, 2021)**



\*Rates shown are per 100,000 populations.

**New COVID-19 cases:** Cases diagnosed in the most recent 14 days (based on reported dates of positive sample collection). To allow for lag in reporting results of positive cases from samples collected in the immediate past 7 days, data used for incident diagnoses analyses are moved back by one week. Data used excludes outbreak-related cases at long-term care facilities and map shown reflects only the new non-LTCF cases diagnosed between the dates shown in map title. See page 8 for zip code break down table.

## COVID-19 NEW CASE<sup>1</sup> COUNTS BY ZIP CODE

Zip Code	Recent 14-day reporting period (8/18–8/31)	Previous 14-day reporting period (8/4–8/17)	% Change between reporting periods <sup>2</sup>
<b>All Fulton</b>	<b>5930</b>	<b>4453</b>	<b>↑ 33.2%</b>
30004	277	178	↑ 55.6%
30005	139	112	↑ 24.1%
30009	94	47	↑ 100.0%
30022	252	209	↑ 20.6%
30023	<10	0	-
30024	<10	<10	-
30075	192	156	↑ 23.1%
30076	147	123	↑ 19.5%
30080	0	0	-
30097	55	37	↑ 48.6%
30098	0	0	-
30135	0	0	-
30138	0	0	-
30139	0	0	-
30213	378	217	↑ 74.2%
30268	66	30	↑ 120.0%
30291	283	174	↑ 62.6%
30296	51	21	↑ 142.9%
30301	<10	<10	-
30303	22	19	↑ 15.8%
30305	115	85	↑ 35.3%
30306	39	33	↑ 18.2%
30307	26	14	↑ 85.7%
30308	85	61	↑ 39.3%
30309	113	86	↑ 31.4%
30310	178	141	↑ 26.2%
30311	277	194	↑ 42.8%
30312	140	117	↑ 19.7%
30313	26	26	-
30314	142	93	↑ 52.7%
30315	259	196	↑ 32.1%
30316	51	47	↑ 8.5%
30318	393	290	↑ 35.5%
30319	26	14	↑ 85.7%
30321	0	<10	↓ 100.0%
30324	77	62	↑ 24.2%
30326	28	22	↑ 27.3%
30327	100	94	↑ 6.4%
30328	119	132	↓ 9.8%
30331	422	379	↑ 11.3%
30334	<10	<10	-
30336	19	<10	↑ 137.5%
30337	73	62	↑ 17.7%

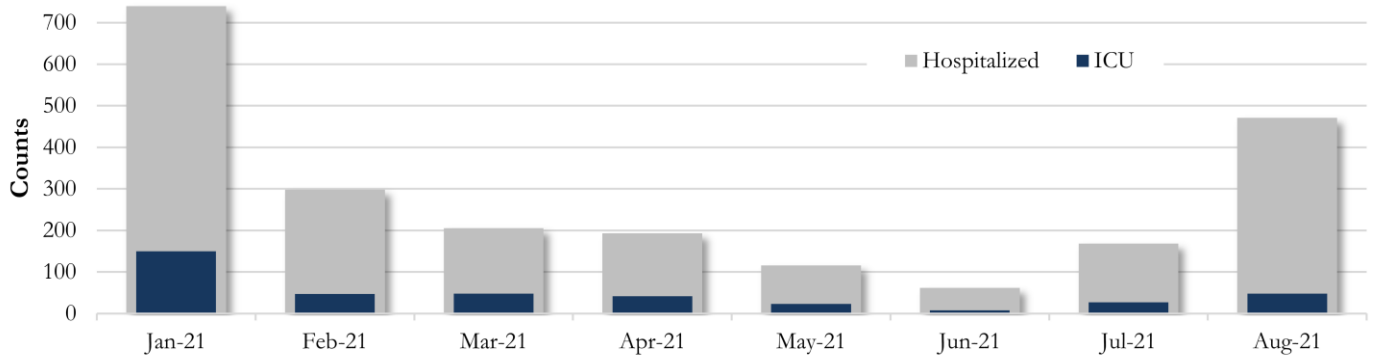
Zip Code	Recent 14-day reporting period (8/18–8/31)	Previous 14-day reporting period (8/4–8/17)	% Change between reporting periods
30338	<10	<10	-
30339	41	35	↑ 17.1%
30340	0	0	-
30341	0	<10	↓ 100.0%
30342	106	105	↑ 1.0%
30344	266	184	↑ 44.6%
30345	0	0	-
30349	525	382	↑ 37.4%
30350	132	102	↑ 29.4%
30354	135	119	↑ 13.4%
30358	0	0	-
30363	<10	13	↓ 30.8%
30374	<10	0	-
30606	0	0	-
31131	0	0	-
31150	0	0	-
Unknown	35	20	-

<sup>1</sup>**New cases:** Cases diagnosed in most recent 28 days (based on reported dates of positive sample collection). To allow for lag in reporting results of new diagnoses from samples collected in the most recent week, data used for incident diagnoses analyses were moved back by one week. <sup>2</sup>**Percent change:** These reflect the percentage increase or decrease of new diagnoses between the 14 days preceding the past 7 days and the 14 days preceding that. Changes in ZIP codes with less than 10 cases in both 2 week intervals are not reported.

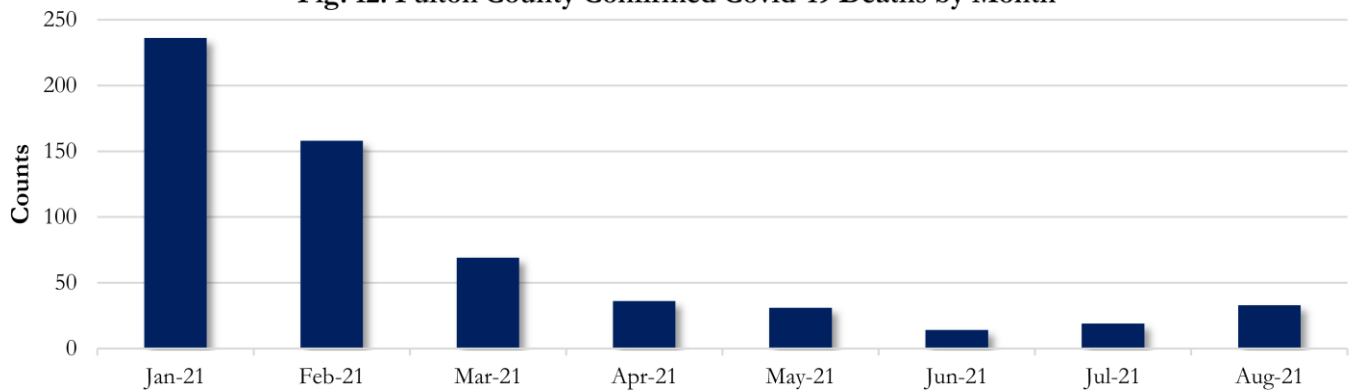


**COVID-19 HOSPITALIZATIONS, ICU ADMISSIONS AND DEATHS IN FULTON**

**Fig. 11. Fulton County Covid-19 Cases Hospitalized and Admitted to ICU by Month**

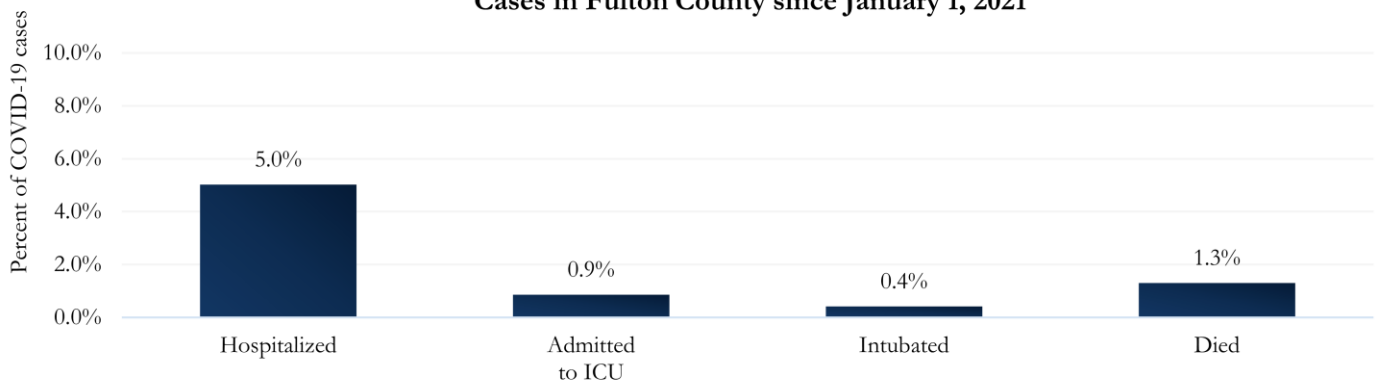


**Fig. 12. Fulton County Confirmed Covid-19 Deaths by Month**



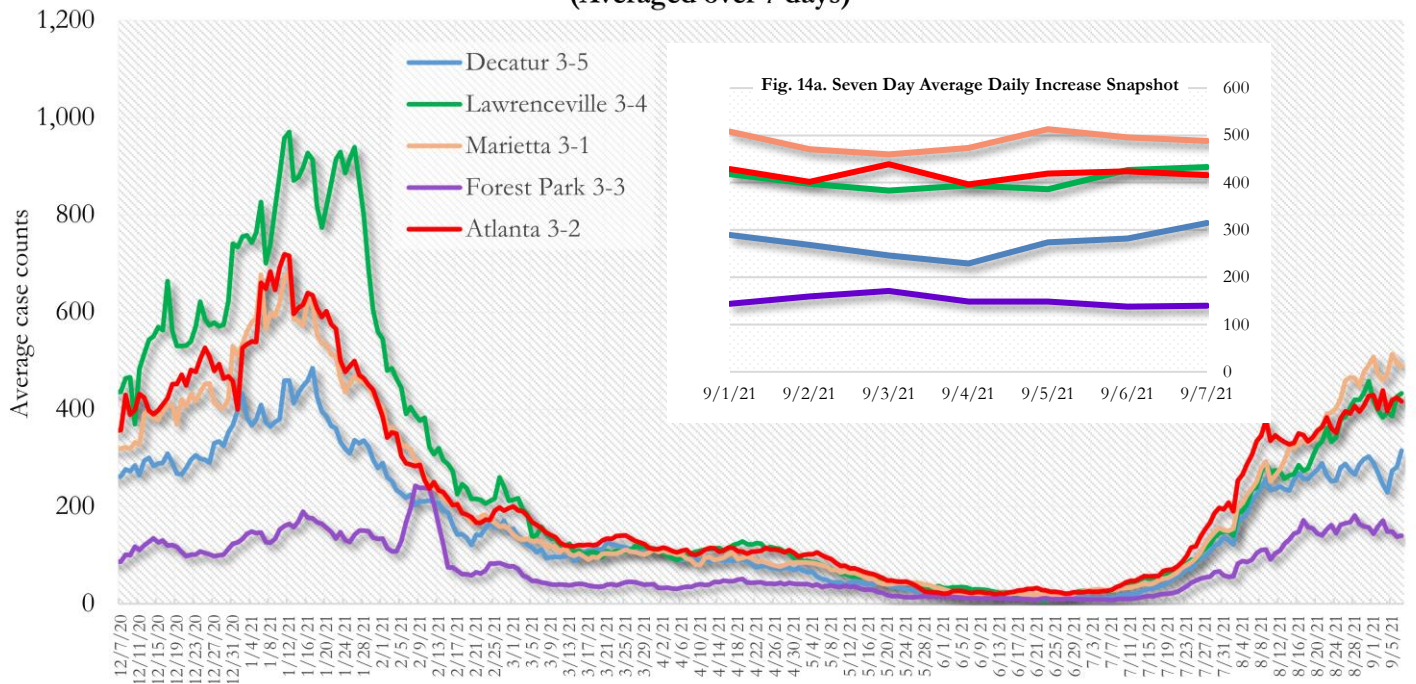
Values for July and August 2021 in figures 13 and 14 are subject to change as more hospitalizations, ICU admissions, and deaths get reported to state and local

**Fig. 13. Hospitalizations, ICU Admissions, Intubations, and Deaths among all Covid-19 Cases in Fulton County since January 1, 2021**



**COVID-19 CASE TRENDS IN FULTON AND SURROUNDING DISTRICTS**

**Fig. 14. Daily Case Counts for Atlanta Metro Districts  
(Averaged over 7 days)**



## DEMOGRAPHIC DISTRIBUTIONS – COVID-19 CASES AND DEATHS

**Table A** - Cumulative and recent confirmed Covid-19 case and death counts by gender, age, and race/ethnicity in Fulton County, Georgia. Past 28 day period refers to August 4 – August 31, 2021

	Total Confirmed Cases	% of Total Cases	Confirmed Cases past 28 days	% of Confirmed Cases past 28 days	Total Confirmed Deaths	% of Total Deaths	Confirmed Deaths past 28 days	% of Confirmed Deaths past 28 days
<b>TOTAL</b>	<b>101134</b>		<b>10383</b>		<b>1428</b>		<b>29</b>	
Female	53663	53.1%	5603	54.0%	685	48.0%	17	58.6%
Male	46974	46.4%	4698	45.2%	743	52.0%	12	41.4%
Unknown*	497	<1%	82	<1%	0	-	0	-
0-9	4921	4.9%	1315	12.7%	0	-	0	-
10-19	11698	11.6%	1985	19.1%	<10	<1%	0	-
20-29	22232	22.0%	1728	16.6%	<10	<1%	0	-
30-39	19368	19.2%	1826	17.6%	31	2.2%	<10	6.9%
40-49	15207	15.0%	1423	13.7%	45	3.2%	<10	3.4%
50-59	13139	13.0%	1014	9.8%	137	9.6%	<10	24.1%
60-69	7698	7.6%	633	6.1%	262	18.3%	<10	10.3%
>70	6804	6.7%	439	4.2%	947	66.3%	16	55.2%
Unknown*	67	<1%	20	<1%	0	-	0	-
Asian, NH	3718	3.7%	282	2.7%	24	1.7%	0	-
Black, NH	44344	43.8%	5434	52.3%	887	62.1%	18	62.1%
White, NH	31961	31.6%	1998	19.2%	452	31.7%	10	34.5%
Hispanic, all races	10148	10.0%	666	6.4%	59	4.1%	<10	3.4%
Other, NH	3330	3.3%	312	3.0%	<10	<1%	0	-
Unknown*	7633	7.5%	1691	16.3%	0	-	0	-

\*Unknown includes cases not yet interviewed. 28 days delayed by seven to account for lag in reporting lab results. Deaths refer to all persons who had a positive PCR test result for Covid-19 and there is evidence that Covid-19 was the cause of death or a significant contributor to their death.



The following data are updated every two weeks.

Last updated 8/31/2021

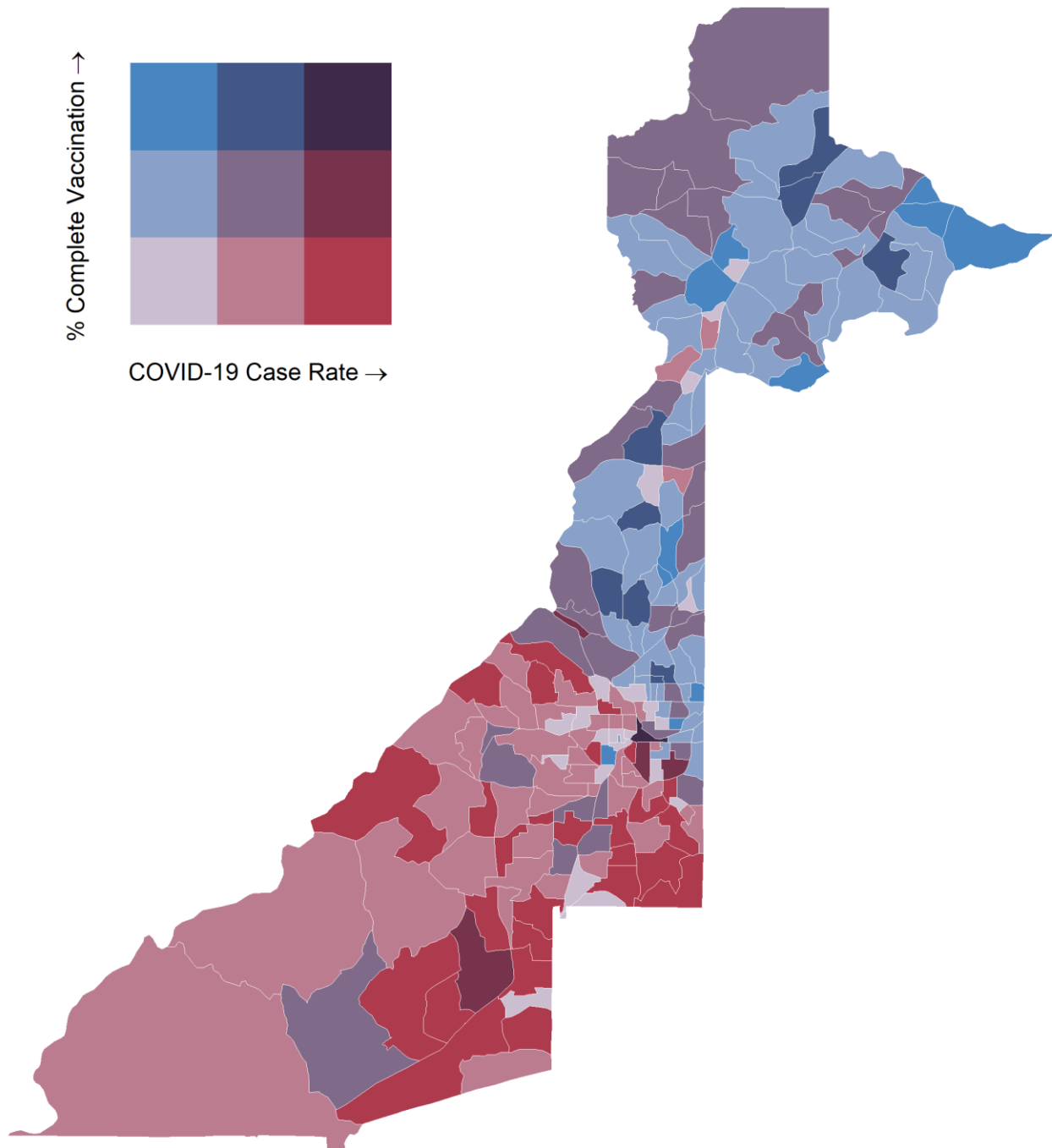
Data are from confirmed cases and PCR testing only.

These data are generated using a fixed start date and counted forward in 14-day intervals. Using these time blocks allows for the stability in trends over time and accounts for delays in reporting lab results.

In the interest of keeping the reports concise and useful, the cumulative counts updated on a monthly basis can now be viewed between updates at the Fulton County Board of Health website [here](#).

Please visit the Georgia Department of Public Health Daily Status Report [here](#) for cumulative daily counts.

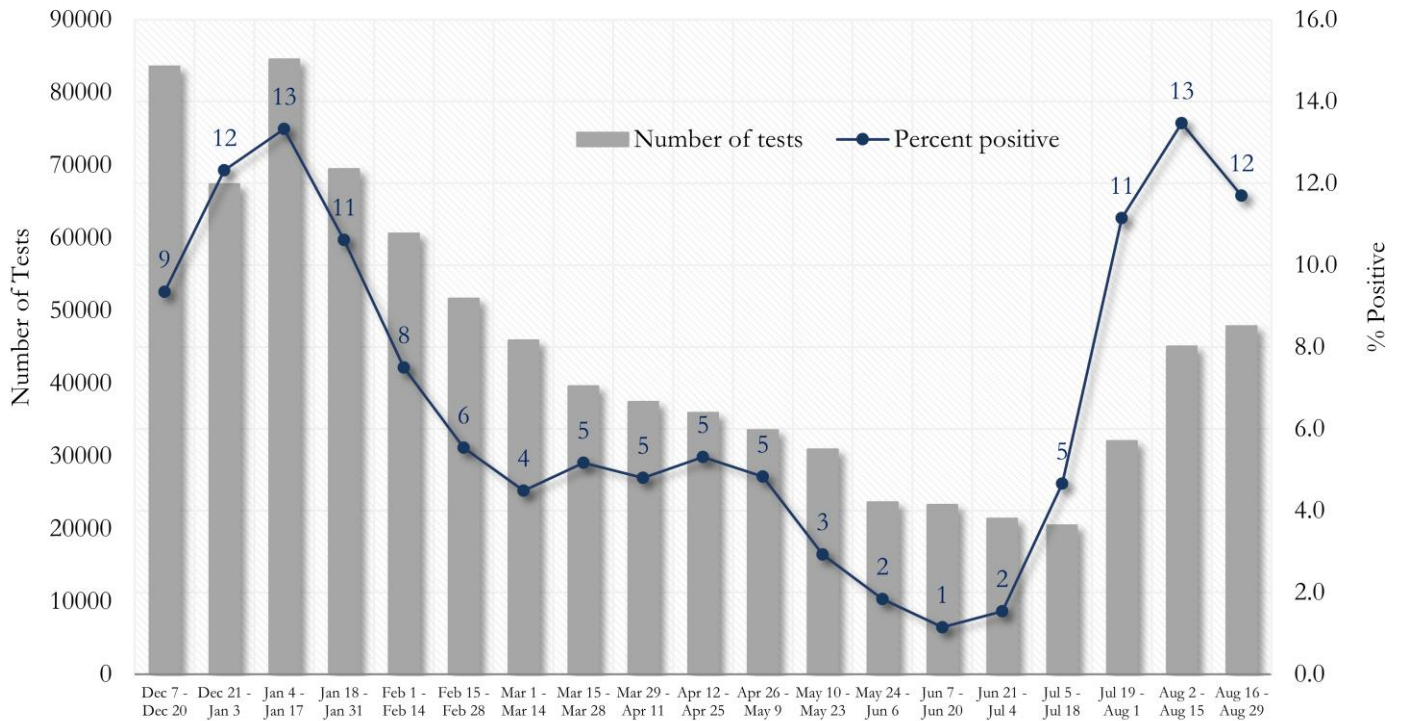
Fig. 15. Percent Complete Vaccination and COVID-19 Case Rate (per 100,000 population) by Census Tract



**How to interpret these colors:** The darker the blue, the better. The upper most blue box indicates low COVID-19 case rates and high vaccination coverage. Red is not ideal as red indicates high COVID-19 case rates and low vaccination coverage. Colors in between indicate varying combinations of COVID-19 case rates and vaccination coverage. COVID-19 case rate reflects new COVID-19 cases diagnosed between August 2<sup>nd</sup> and August 29<sup>th</sup>, 2021 across Fulton County. Vaccination data from: <https://experience.arcgis.com/experience/3d8eea39f5c1443db1743a4cb8948a9c>

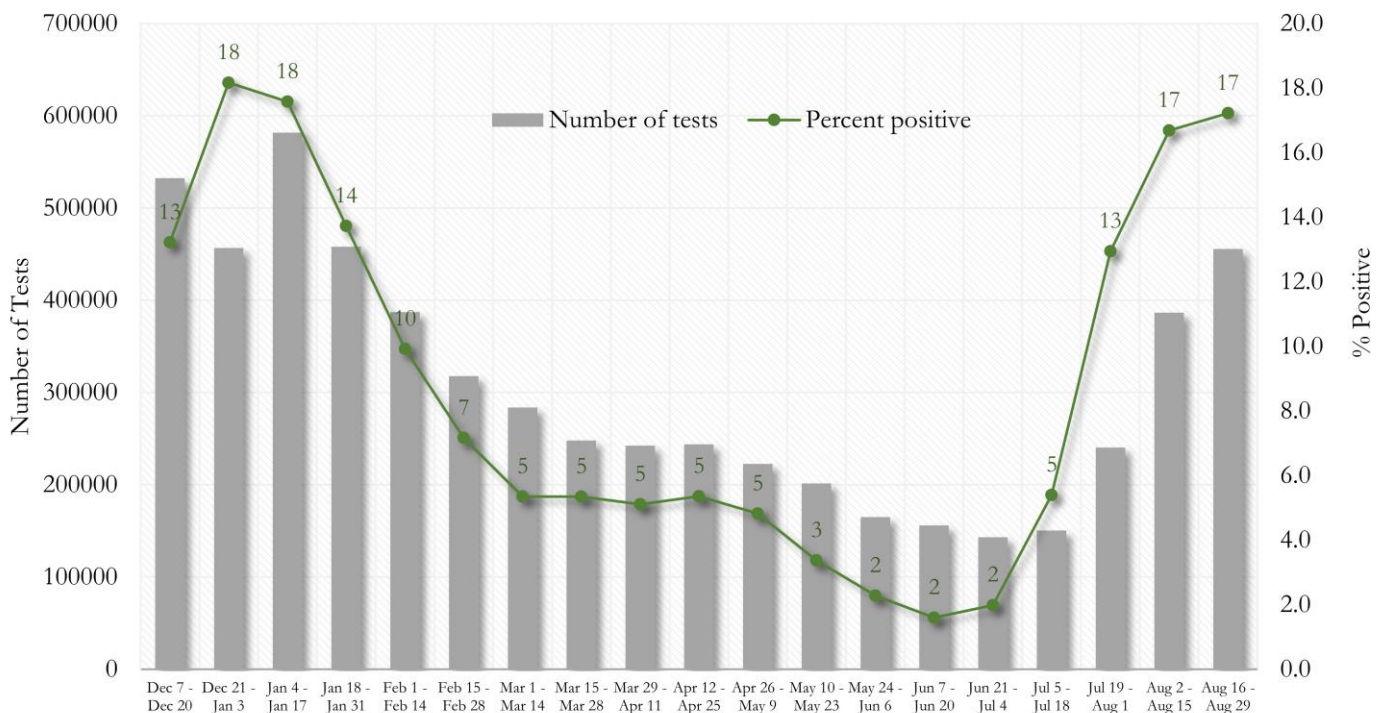
**COVID-19 TESTING AND POSITIVITY IN FULTON COUNTY AND GEORGIA**

**Fig. 16. Trends in Positive Covid-19 Tests in Fulton County by 14-day Periods**



\*Data on Polymerase Chain Reaction (PCR) tests only included.

**Fig. 17. Trends in Positive Covid-19 Tests in Georgia by 14-day Periods**

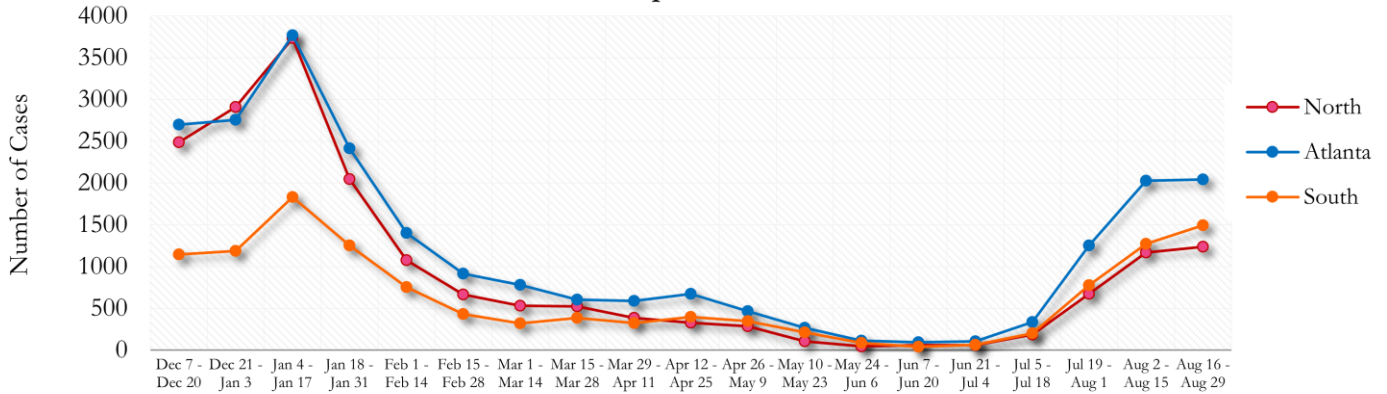


\*Data on Polymerase Chain Reaction (PCR) tests only included.



**TRENDS IN COVID-19 CASES AMONG DEMOGRAPHIC GROUPS (14 DAY PERIODS)**

**Fig. 18. Trends in Geographic distribution of Covid-19 Cases in Fulton County by 14-day periods**

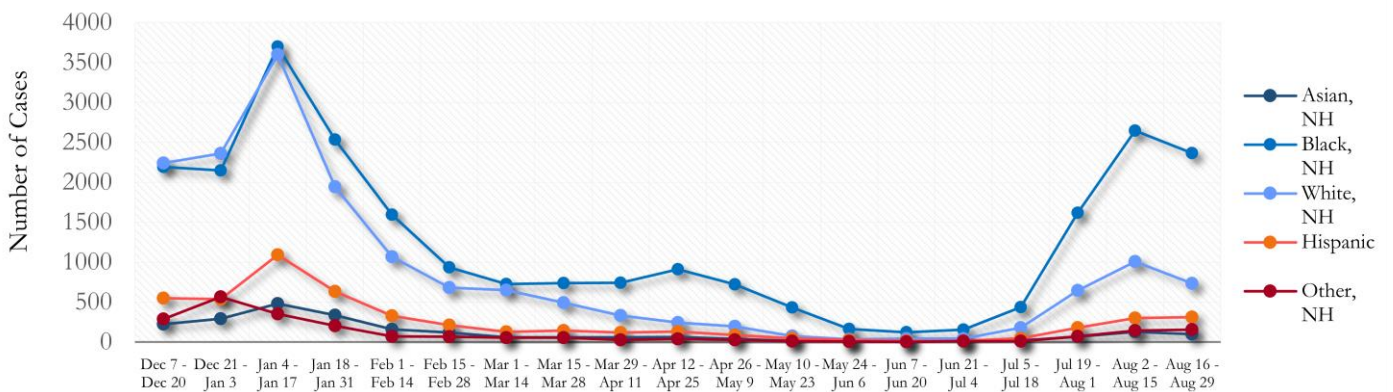


In the past two weeks, Atlanta accounted for the majority of new cases.

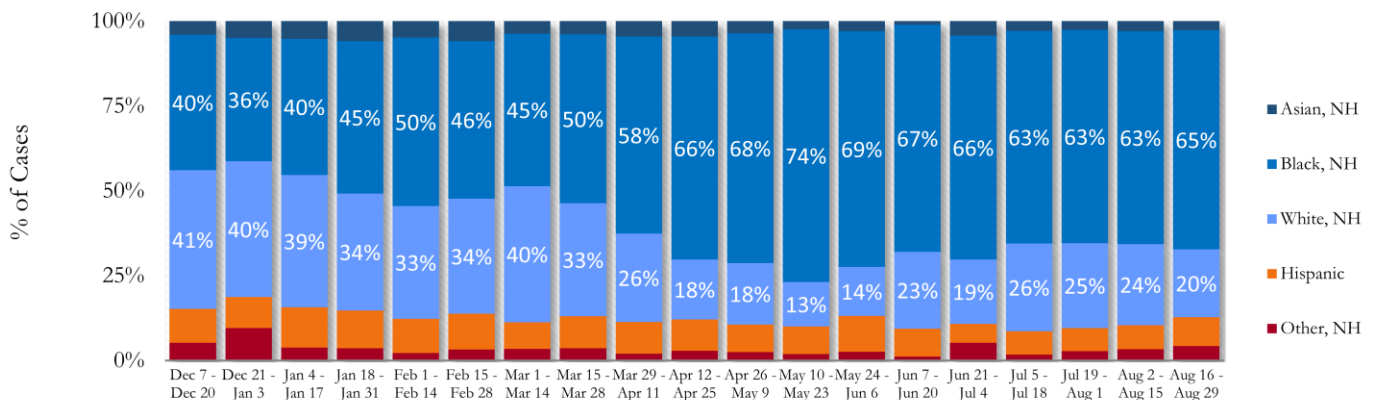
\*North - Includes all Fulton cities north of Atlanta (Alpharetta, Johns Creek, Milton, Mountain Park, Roswell, Sandy Springs)

\*South - Includes all Fulton cities south of Atlanta (Chattahoochee Hills, College Park, East Point, Fairburn, Hapeville, Palmetto, South Fulton, and Union City)

**Fig. 19. Trends in Racial Distribution of Covid-19 Cases in Fulton County by 14-day periods**

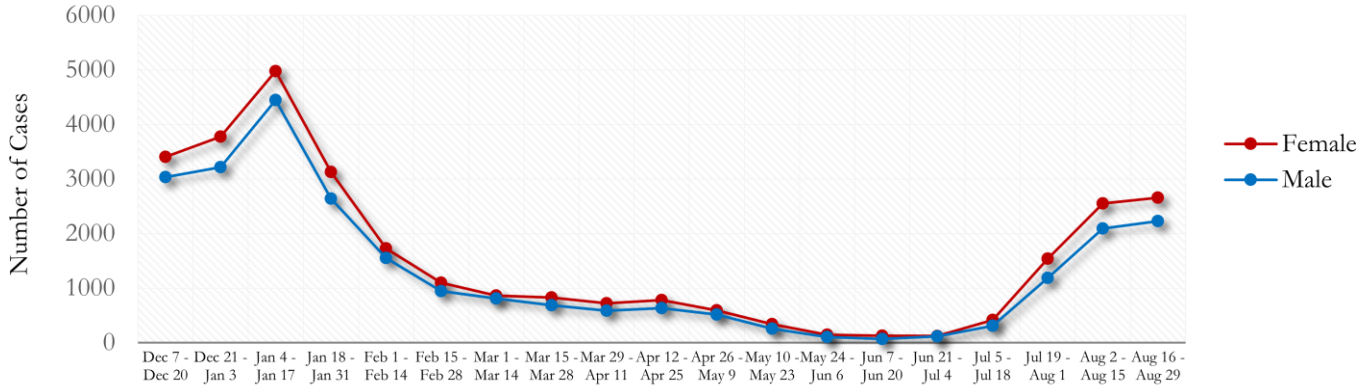


**Fig. 20. Racial Distribution of Covid-19 Cases in Fulton County by 14-day periods**

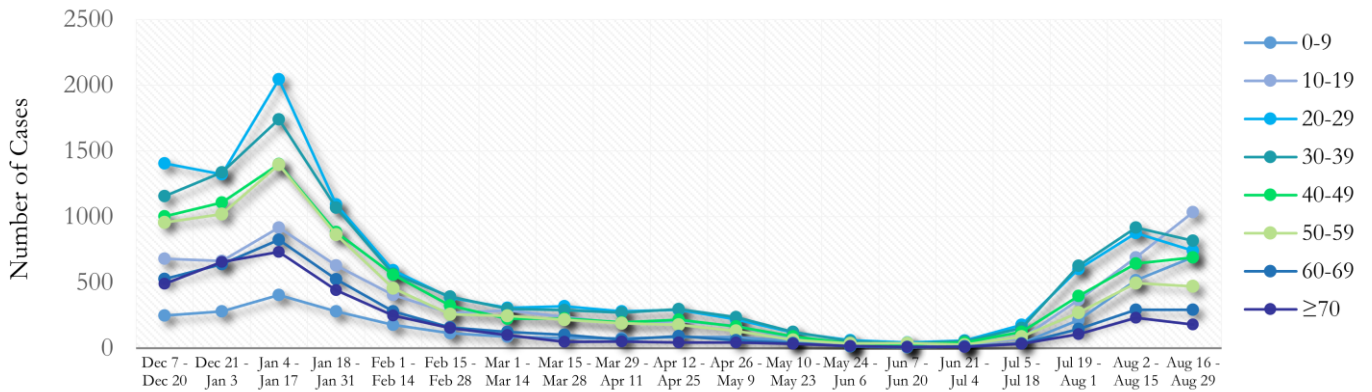


About 7% of all Fulton County COVID cases are missing data on patient race and ethnicity and in the past two weeks, about 26% of cases are missing this data. Percentages do not include the missing data and thus are subject to change as data are cleaned.

**Fig. 21. Trends in Gender Distribution of Covid-19 Cases in Fulton County by 14-day periods**

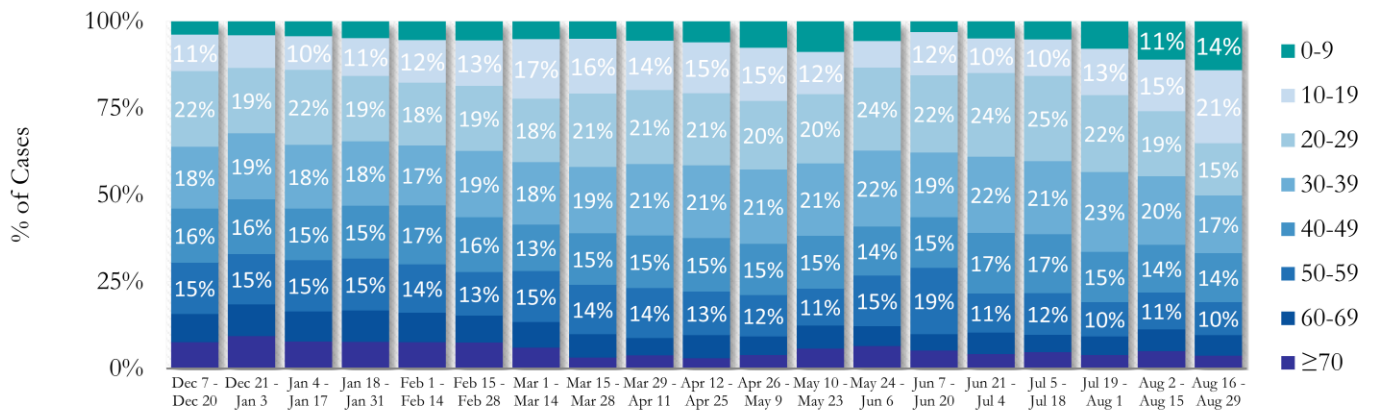


**Fig. 22. Trends in Age Distribution of Covid-19 Cases in Fulton County by 14-day periods**



In the most recent two weeks, 10-19 year olds and 30-39 year olds accounted for the majority of new cases.

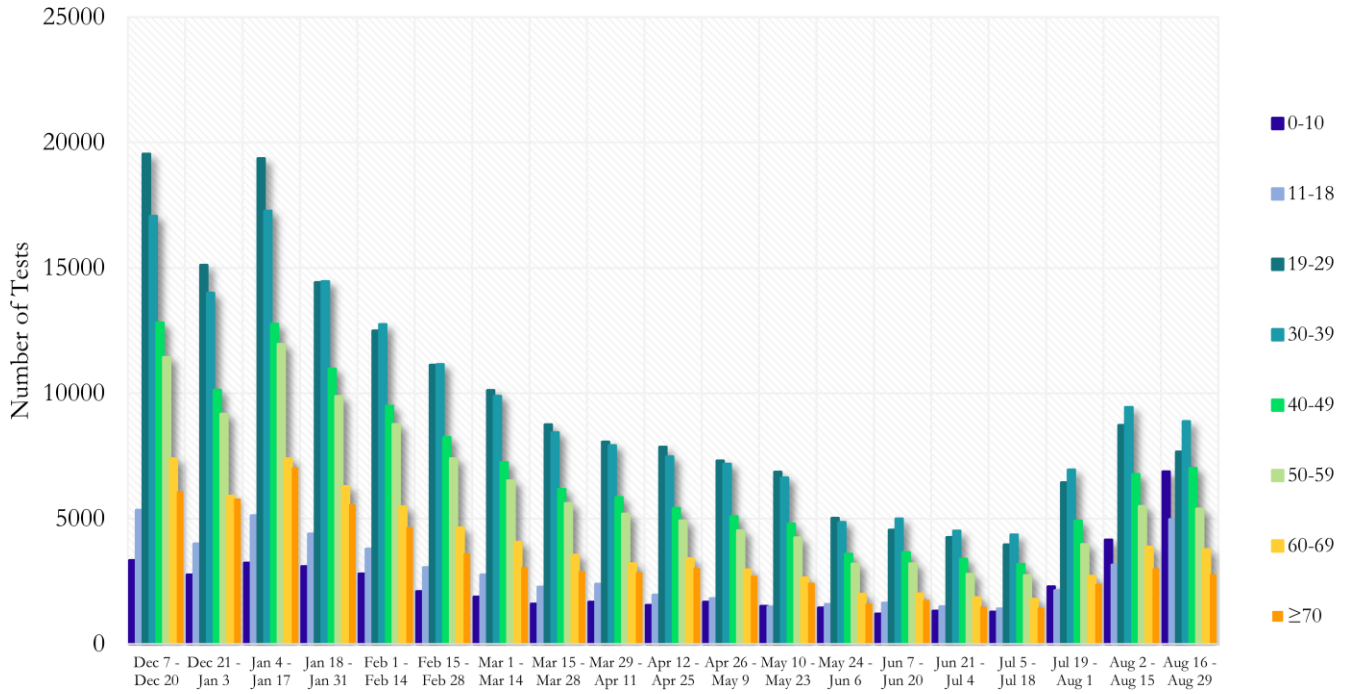
**Fig. 23. Age Distribution of Covid-19 Cases in Fulton County by 14-day periods**



Value labels under 10% are not shown. Percentages do not include the missing data and thus are subject to change as data are cleaned.

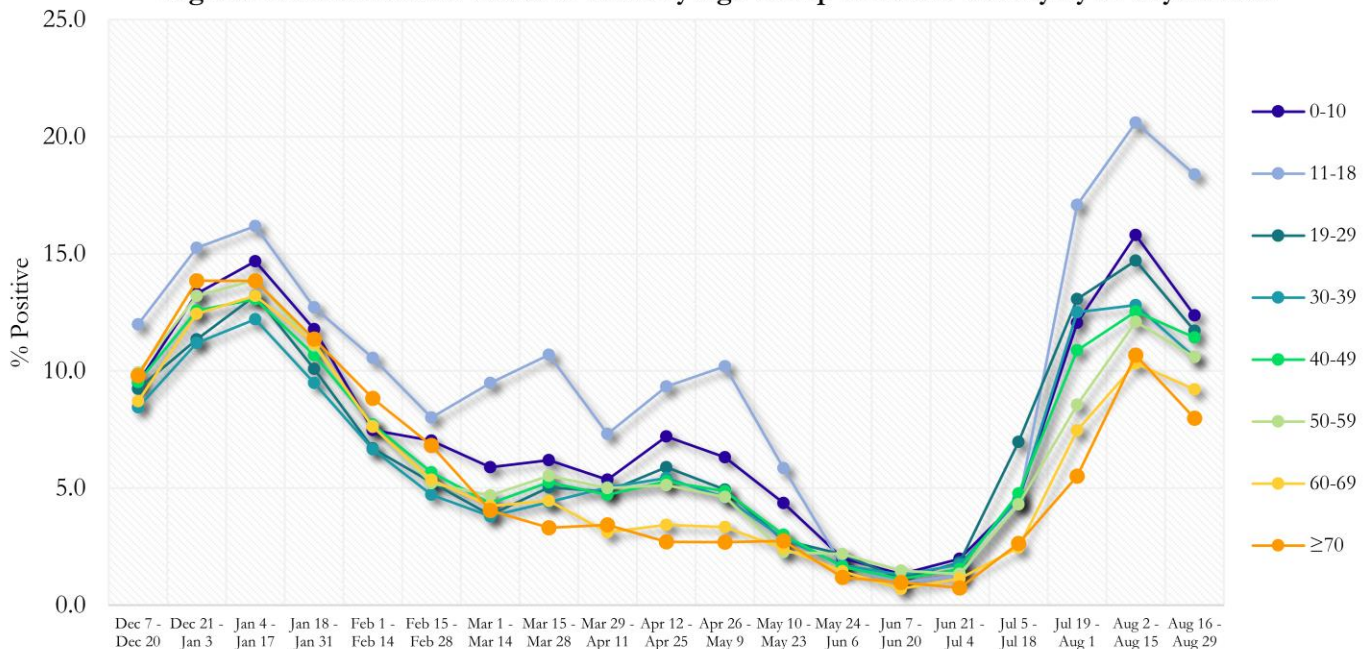
**COVID-19 TESTING AND POSITIVITY IN FULTON COUNTY BY AGE AND RACE**

**Fig. 24. Covid-19 Tests by Age in Fulton County by 14-day Periods**



\*Data on Polymerase Chain Reaction (PCR) tests only included.

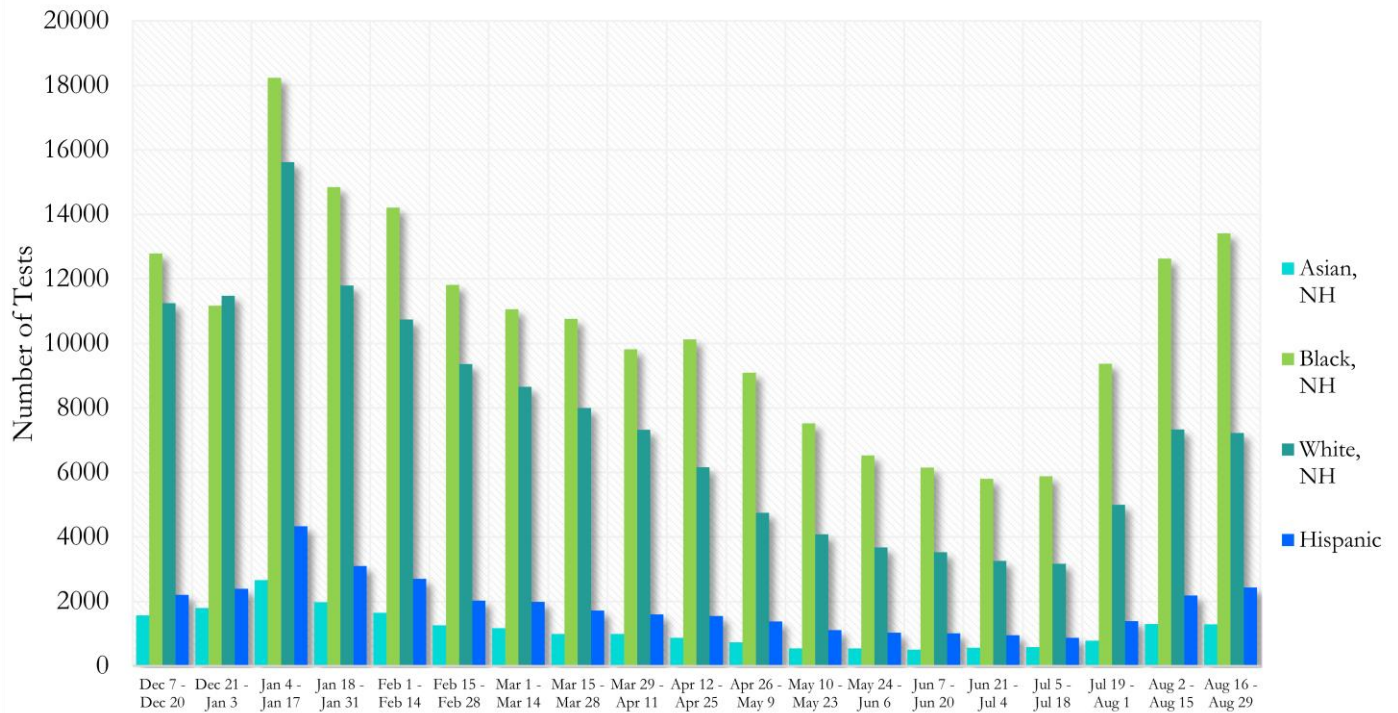
**Fig. 25. Percent Positive Covid-19 Tests by Age Group in Fulton County by 14-day Periods**



\*Data on Polymerase Chain Reaction (PCR) tests only included.

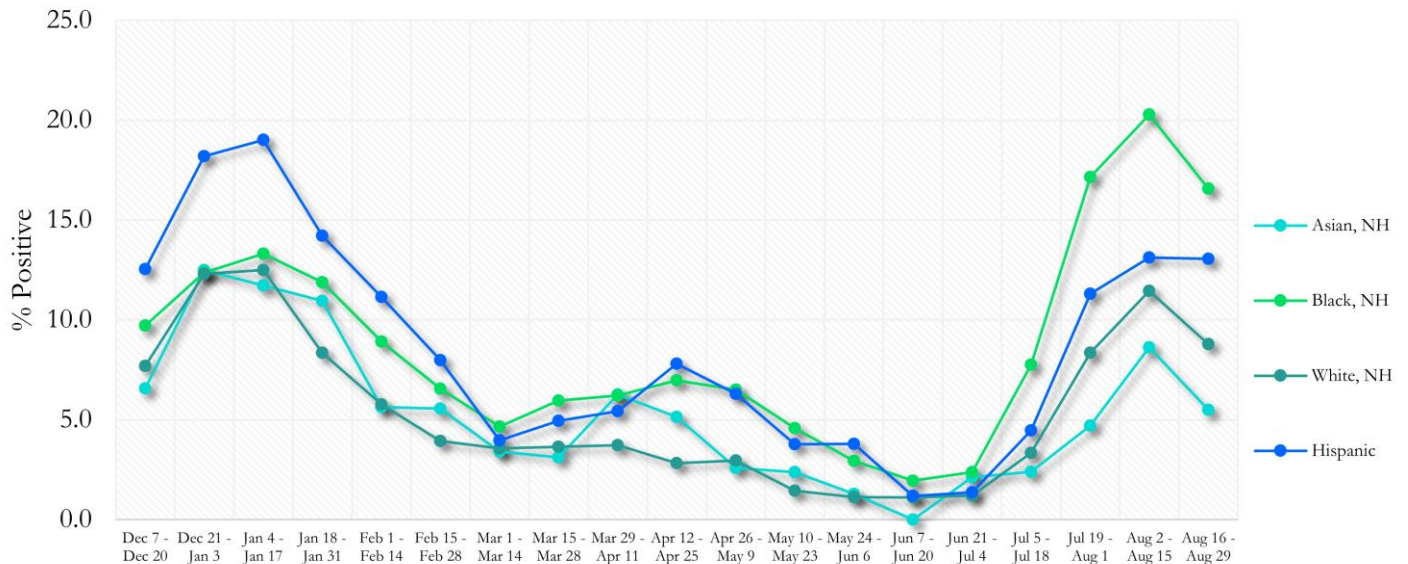


**Fig. 26. Covid-19 Tests by Race and Ethnicity in Fulton County by 14-day Periods**



\*Data on Polymerase Chain Reaction (PCR) tests only included. For the recent two weeks, 49% of test results did not have race/ethnicity information.

**Fig. 27. Percent Positive Covid-19 Tests by Race and Ethnicity in Fulton County by 14-day Periods**



\*Data on Polymerase Chain Reaction (PCR) tests only included.