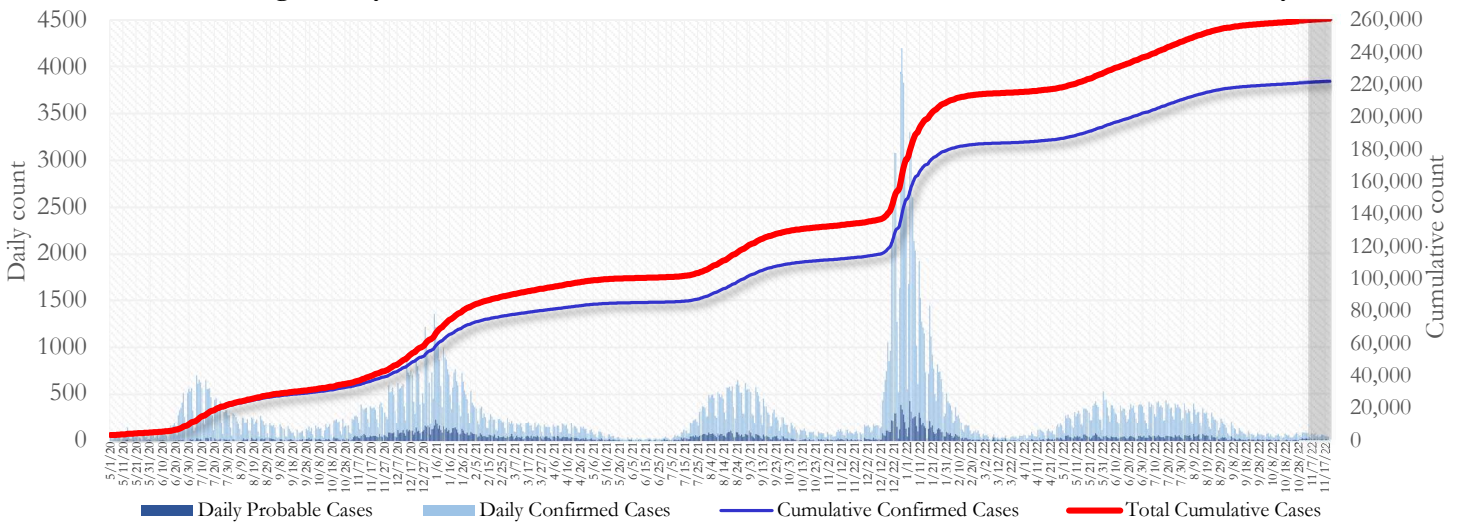


## SUMMARY

- As of November 21, 2022, Fulton County has recorded **227,197 confirmed cases** and **38,610 probable cases** of COVID-19.
- Figure 1 shows both confirmed and probable case counts but the ensuing tables and figures use data from **confirmed cases only**.
- As of November 10, 2022, Fulton County has recorded **2,316 confirmed COVID-19 deaths**.
- By city, new confirmed COVID-19 case rates range from 24.2 per 100,000 persons (Milton) to 101.8 per 100,000 persons (Palmetto). [**Fulton County Diagnoses Rates (per 100,000 persons): Cumulative – 226611; Incidence – 71.2**]. See map showing incident case rate by ZIP code on Pg.7.
- Of all PCR testing done in Fulton County between Oct 24 and Nov 6, 2022, the **percent positivity rate was 5.4%**.

**Fig 1. Daily and Cumulative Confirmed and Probable COVID-19 cases in Fulton County, GA**



Counts shown reflect the number of cases as of 9:00 am on 11/21/22 using the date of first positive sample collection. Where date of sample collection was not available or missing, the date of report creation in GA SendSS was used instead. The Georgia Department of Public Health defines a confirmed cases as someone with a positive molecular test, also known as PCR. A probable case is defined as a positive antigen test, though probable cases are still considered positive cases and individuals who tested positive through an antigen test should follow all DPH isolation and quarantine guidance. **Note:** Delays in data reporting may cause changes in data counts, particularly in the shaded portion. Data throughout this report are preliminary and subject to ongoing data cleaning processes, and thus are subject to change.

**THE FOLLOWING ANALYSES (PAGES 1-19) ARE USING DATA ON CONFIRMED CASES ONLY.**

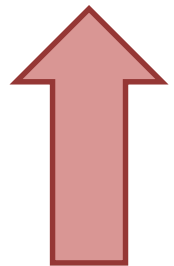
### DISTRIBUTION OF COVID-19 CASES BY REGION

**New cases:** 42% of the new COVID-19 cases in the past 2 weeks occurred in Atlanta while 38% and 18% occurred in the Northern and Southern regions of the county respectively.

Fulton Region	% Cumulative count	% New cases*
Atlanta	43.5%	41.9%
North <sup>1</sup>	32.9%	34.3%
South <sup>2</sup>	21.1%	21.8%
Unincorporated/Unknown	2.5%	2.1%

<sup>1</sup>Includes all Fulton County cities north of Atlanta (Alpharetta, Johns Creek, Milton, Mountain Park, Roswell, Sandy Springs.) <sup>2</sup>Includes all cities south of Atlanta (Chattahoochee Hills, College Park, East Point, Fairburn, Hapeville, Palmetto, South Fulton, and Union City) \***New cases:** Cases diagnosed in the past 2 weeks only.

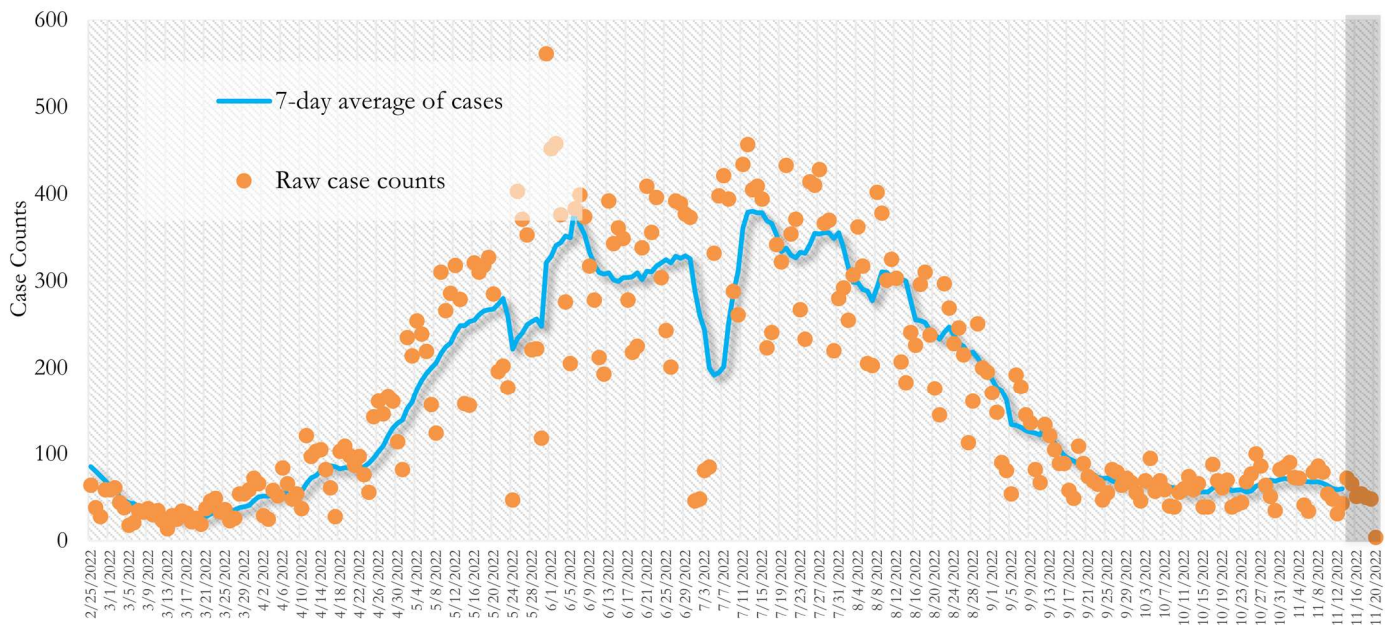
**In the recent two week reporting period (10/31-11/13), there were more new cases of COVID-19 in Fulton County than the previous two weeks (10/17-10/30).**



*\*Delayed a week to account for testing results turnaround time.*

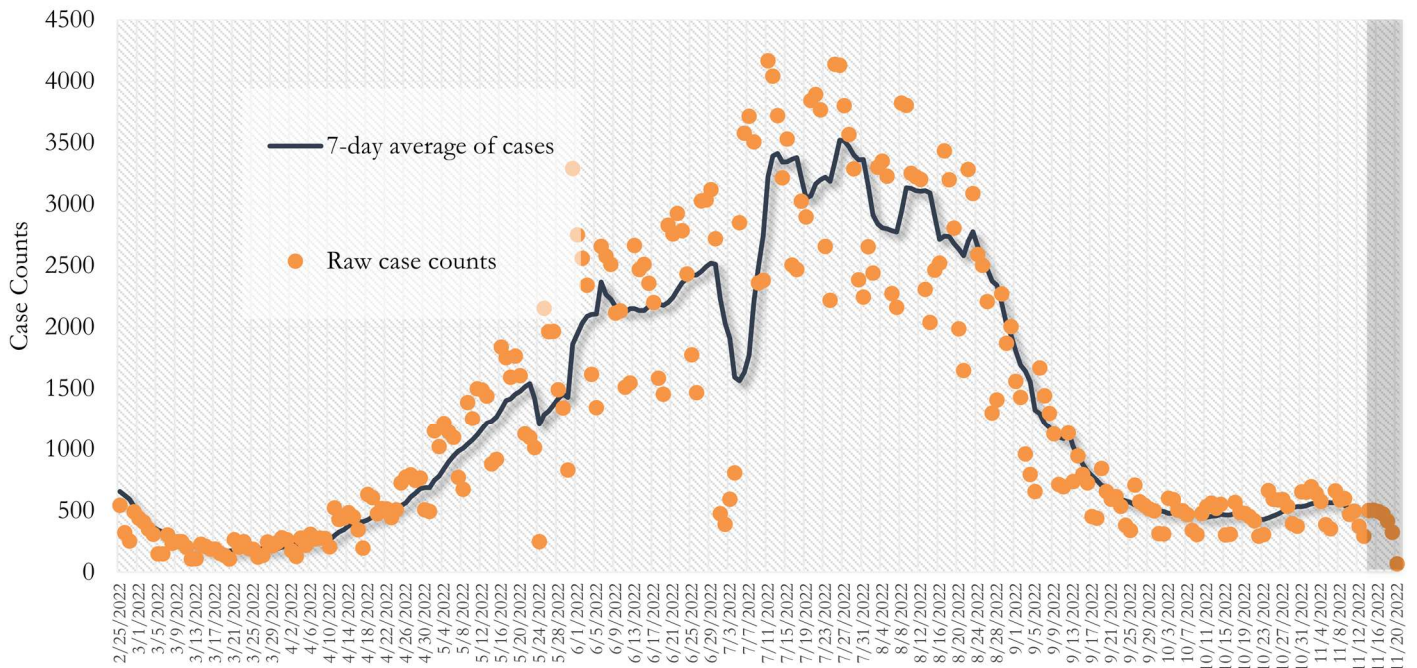
TRENDS IN COVID-19 CASES, HOSPITALIZATIONS AND DEATHS (7-DAY MOVING AVE.)

Fig. 2. New COVID-19 Cases in Fulton County Daily (Averaged over 7 days)



\*Date of collection of first positive sample used (report creation date used where sample collection date is missing). Graph above reflects the trend in COVID-19 diagnosis. Due to the high volume of testing in recent weeks, there have been delays in reporting lab results. Thus, the trend is subject to change as more lab results get added to the state surveillance database.

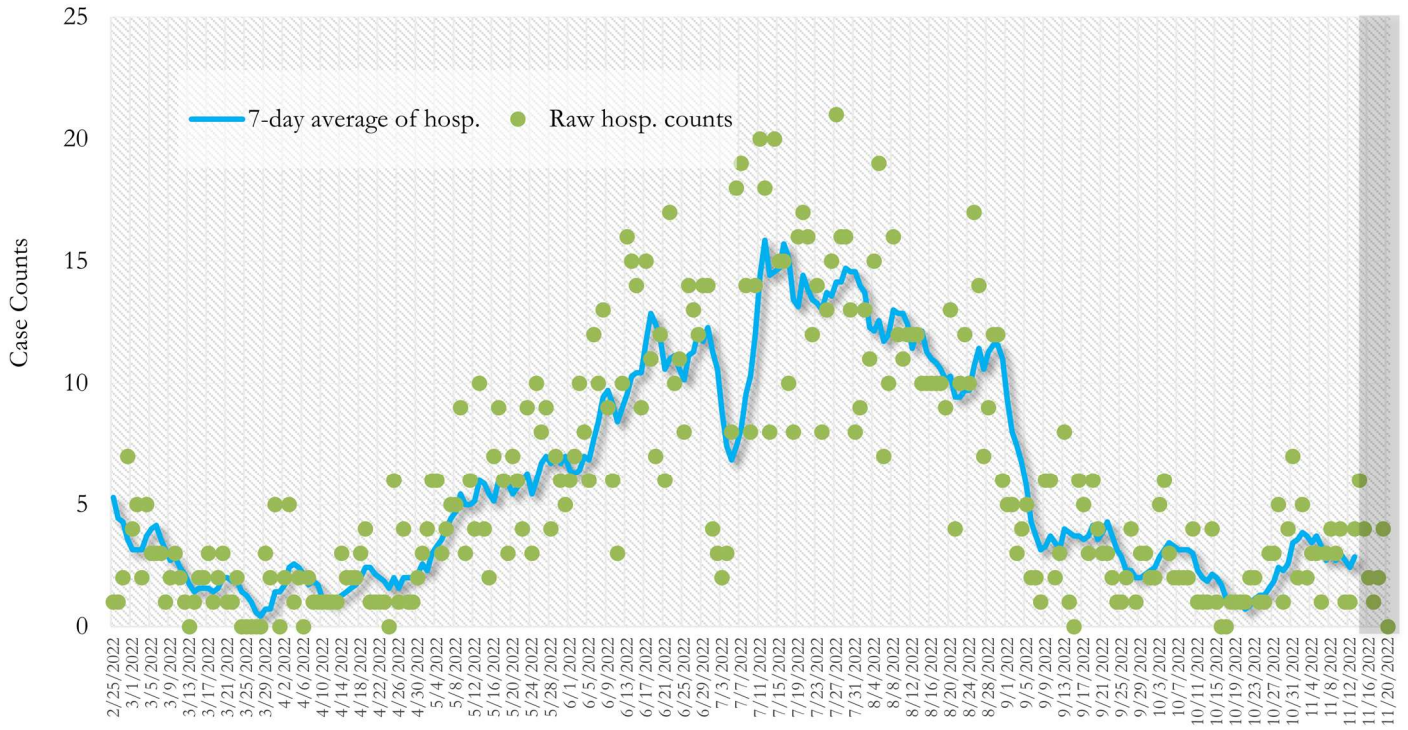
Fig. 3. New COVID-19 Cases in Georgia State Daily (Averaged over 7 days)



\*Date of collection of first positive sample used (report creation date used where sample collection date is missing). Graph above reflects the trend in COVID-19 diagnosis. Due to the high volume of testing in recent weeks, there have been delays in reporting lab results. Thus, the trend is subject to change as more lab results get added to the state surveillance database.

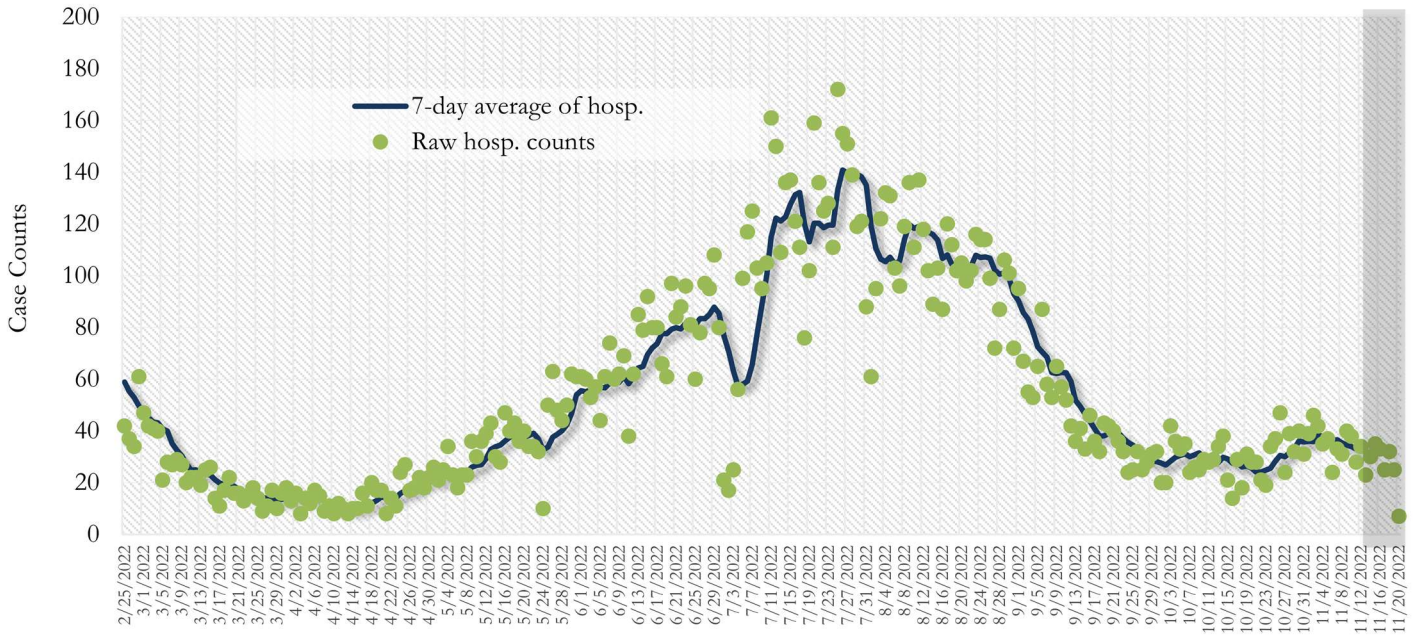


Fig. 4. COVID-19 Hospitalizations in Fulton County Daily (Averaged over 7 days)



\*Reported date of hospital admission used. Graph above reflects the trend in COVID-19 hospitalizations. Due to the high volume of new cases being added daily, there have been delays in reporting hospitalization data. Thus, the trend is likely to change as more hospitalization data is reported in the state surveillance database. Numbers may include those who tested positive for Covid-19 while hospitalized for a different reason.

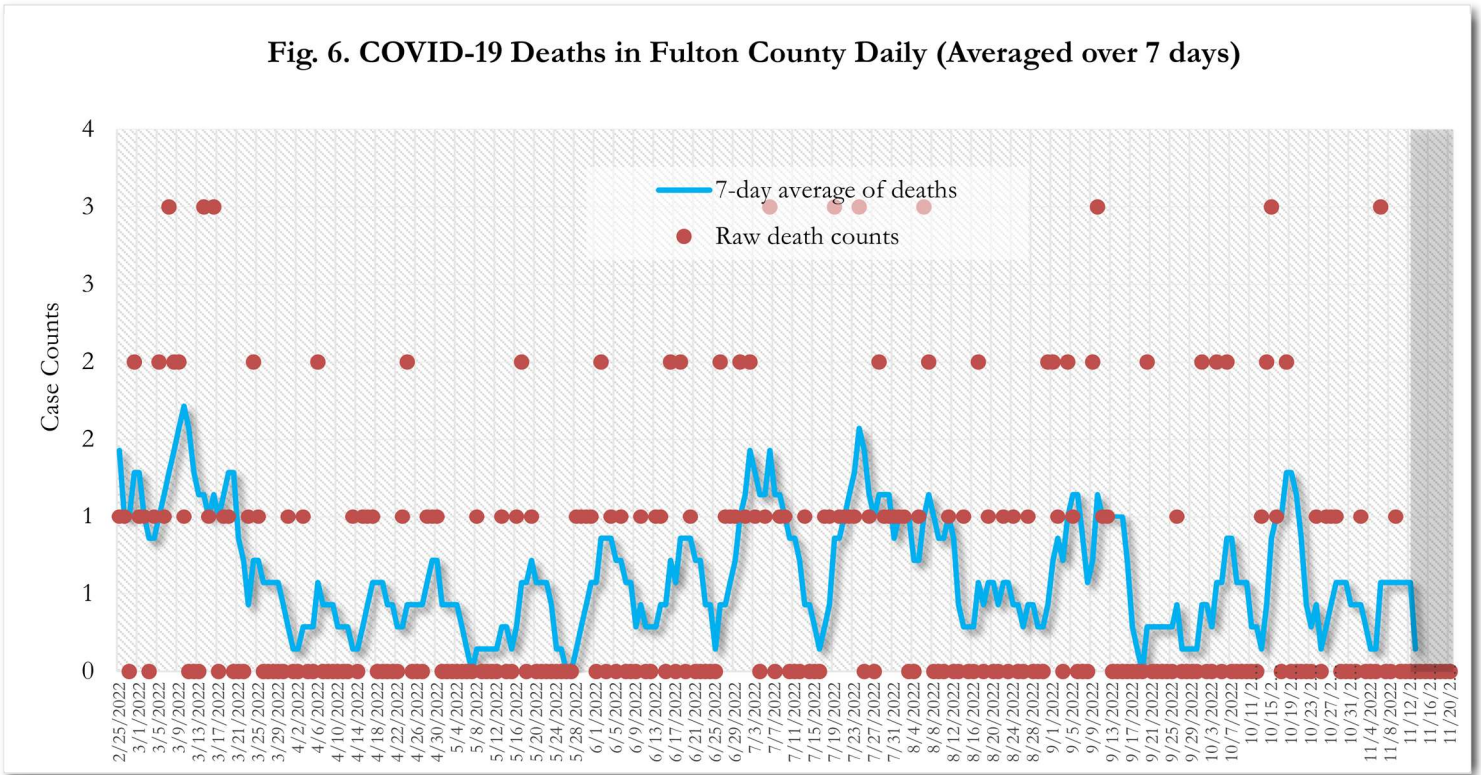
Fig. 5. COVID-19 Hospitalizations in Georgia State Daily (Averaged over 7 days)



\*Reported date of hospital admission used. Graph above reflects the trend in COVID-19 hospitalizations. Due to the high volume of new cases being added daily, there have been delays in reporting hospitalization data. Thus, the trend is likely to change as more hospitalization data is reported in the state surveillance database. Numbers may include those who tested positive for Covid-19 while hospitalized for a different reason.

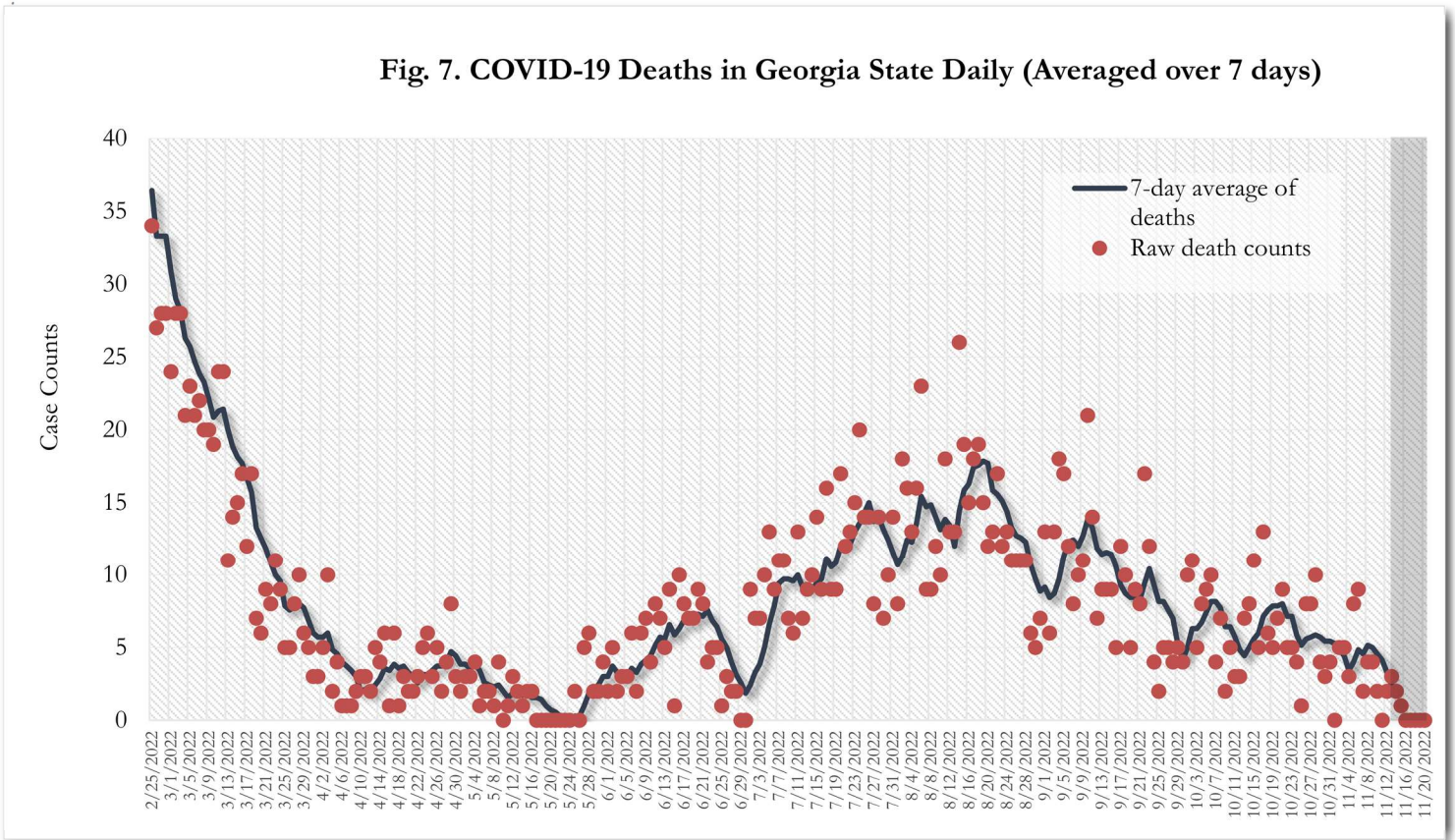


Fig. 6. COVID-19 Deaths in Fulton County Daily (Averaged over 7 days)



\*Reported date of death used. Graph above reflects the trend in deaths attributed to COVID-19. The trend is likely to change as more data on deaths among persons with COVID-19 is reported in the state surveillance database.

Fig. 7. COVID-19 Deaths in Georgia State Daily (Averaged over 7 days)



\*Reported date of death used. Graph above reflects the trend in deaths attributed to COVID-19. The trend is likely to change as more data on deaths among persons with COVID-19 is reported in the state surveillance database.

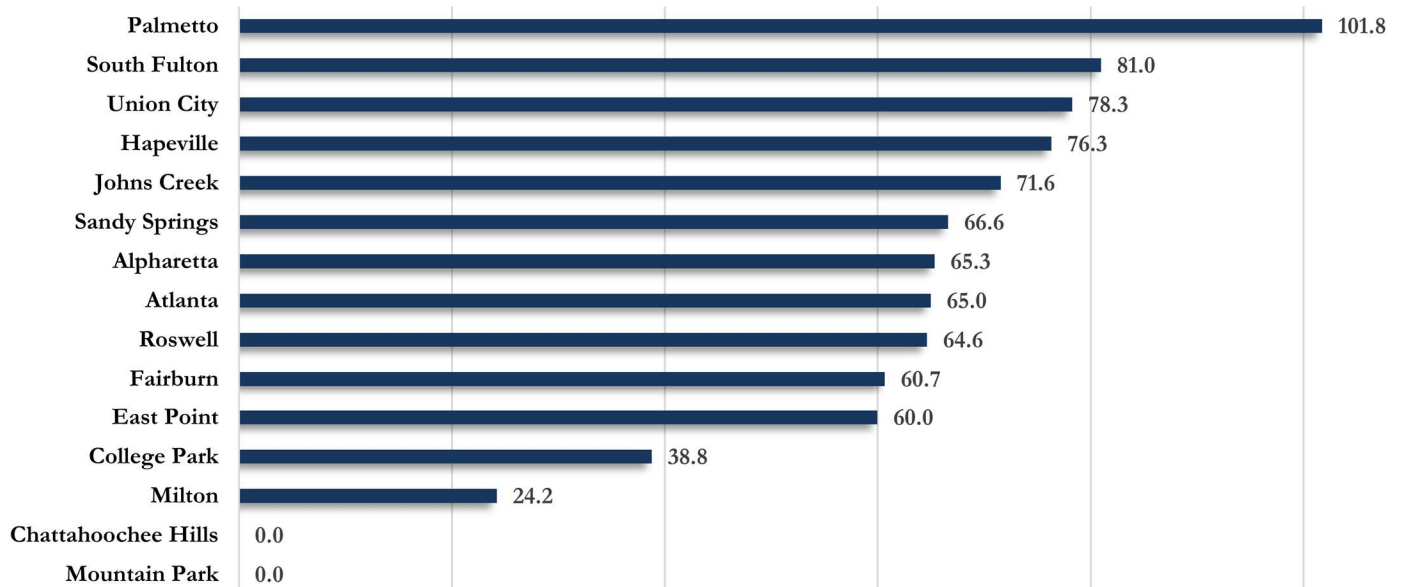


## COVID-19 CASE COUNTS AND RATES BY CITY

	Recent 14-day reporting period <sup>1</sup>	Preceding 14-day reporting period	% Change from preceding 14 days (%) <sup>2</sup>	14-Day Incidence Rate <sup>3</sup>
	10/31-11/13	10/17-10/30		
Alpharetta	43	41	↔	65.3
Atlanta	298	264	↑ 12.9%	65.0
Chattahoochee Hills	0	<10	↔	0.0
College Park	<10	<10	↓ 28.6%	38.8
East Point	23	18	↑ 27.8%	60.0
Fairburn	10	<10	↑ 11.1%	60.7
Hapeville	<10	<10	↑ 25.0%	76.3
Johns Creek	59	67	↓ 11.9%	71.6
Milton	10	19	↓ 47.4%	24.2
Mountain Park	0	0	↔	0.0
Palmetto	<10	<10	↑ 300.0%	101.8
Roswell	60	50	↑ 20.0%	64.6
Sandy Springs	72	72	↔	66.6
South Fulton	87	49	↑ 77.6%	81.0
Union City	21	12	↑ 75.0%	78.3
Unknown	15	19	↔	↔

<sup>1</sup>**New cases:** Cases diagnosed in most recent 14 days (based on reported dates of positive sample collection). To allow for lag in reporting results of new diagnoses from samples collected in the most recent week, data used for incident diagnoses analyses were moved back by one week. <sup>2</sup>**% change:** These reflect the percentage increase or decrease in new diagnoses between the 14 days preceding the most recent 7 days and the 14 days preceding that. <sup>3</sup>**(Incidence) Rate:** Rate of new diagnoses in the last 14 day period preceding the immediate past week. Population estimates come from 2020 Census data. **\*\*Data cleaning** (either during case interviews or address geo-coding) may lead to reassignment of few cases from one territory to another based on their corrected addresses. These may appear as "decreases" when compared to the previous counts. These do not reflect errors in the data collection or analysis process but only reflect the minor day-to-day fluctuations in case counts that arise in an evolving public health database like COVID's. <sup>4</sup>Incidence rate is skewed high due to small population. **Note: All data reported are preliminary and subject to change.**

Fig. 8. Incidence Rates by Fulton City for Recent 14-day Reporting Period



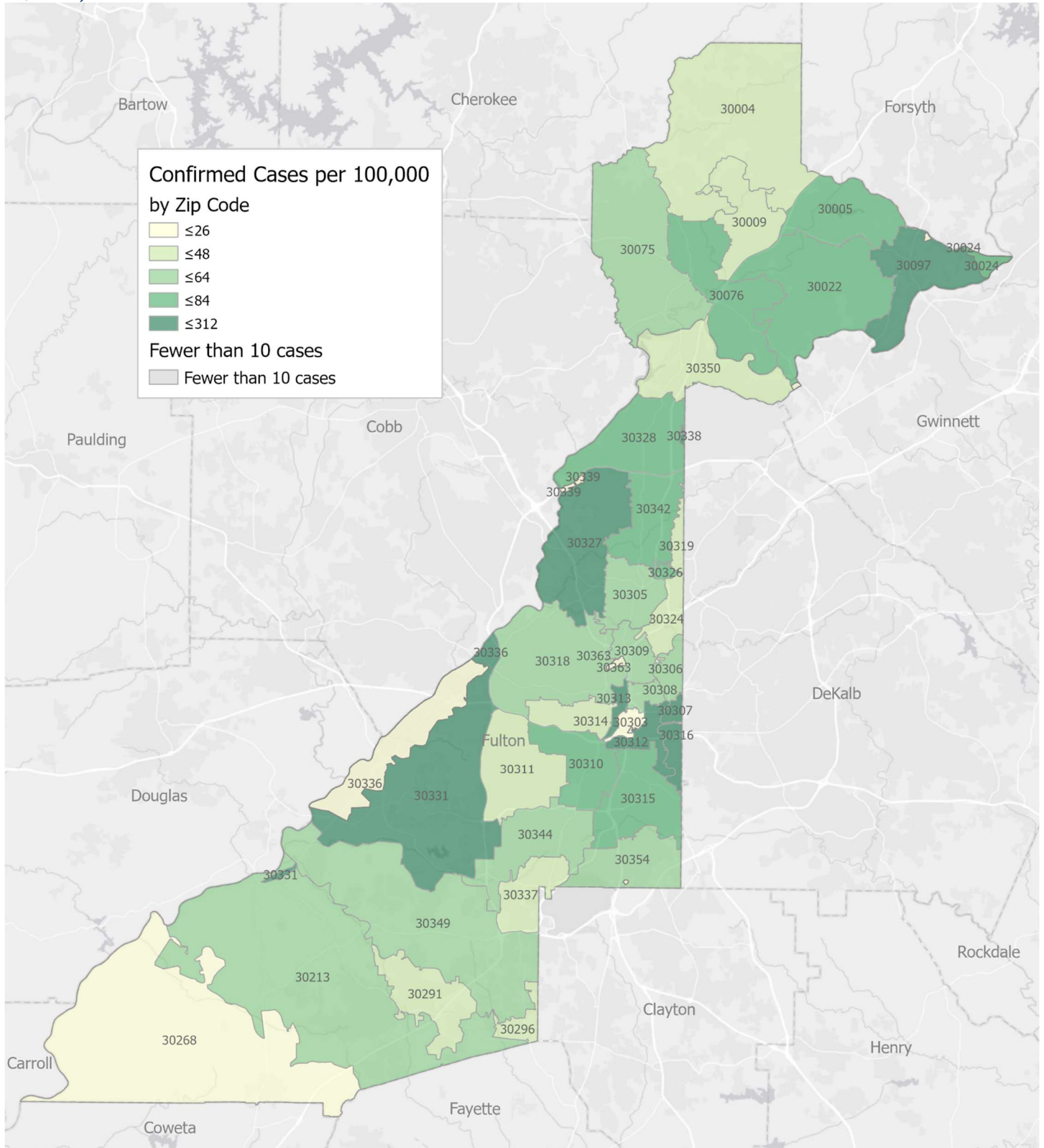
\*Rates shown are per 100,000 persons | All data shown are preliminary and are subject to change as testing results get updated.







**Fig. 10. New COVID-19 Diagnoses Rates (per 100,000 population) by Zip Code (October 31 – November 13, 2022)**



**New COVID-19 cases:** Cases diagnosed in most recent 14 days (based on reported dates of positive sample collection). To allow for lag in reporting results of positive cases from samples collected in the immediate past 7 days, data used for incident diagnoses analyses are moved back by one week. Data used excludes outbreak-related cases at long-term care facilities and map shown reflects only the new non-LTCF cases diagnosed between the dates shown in map title. See page 8 for zip code break down table.



## COVID-19 NEW CASE<sup>1</sup> COUNTS BY ZIP CODE

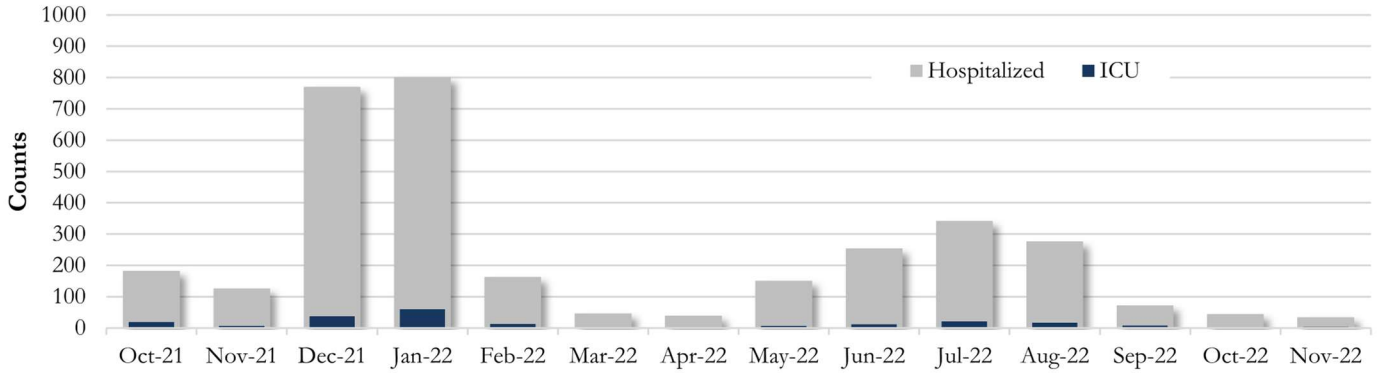
Zip Code	Recent 14-day reporting period (10/31–11/13)	Previous 14-day reporting period (10/17–10/30)	% Change between reporting periods <sup>2</sup>
<b>All Fulton</b>	<b>719</b>	<b>629</b>	<b>↑ 14.3%</b>
30004	19	25	↓ 24.0%
30005	17	26	↓ 34.6%
30009	<10	<10	↔
30022	49	53	↓ 7.5%
30024	<10	<10	↔
30075	14	23	↓ 39.1%
30076	44	25	↑ 76.0%
30092	0	0	↔
30097	17	24	↓ 29.2%
30098	0	0	↔
30213	33	16	↑ 106.3%
30268	<10	<10	↔
30291	16	<10	↑ 166.7%
30296	<10	<10	↔
30303	<10	<10	↔
30305	13	18	↓ 27.8%
30306	<10	<10	↔
30307	<10	<10	↔
30308	17	11	↑ 54.5%
30309	13	17	↓ 23.5%
30310	23	20	↑ 15.0%
30311	16	15	↑ 6.7%
30312	19	19	↔
30313	<10	<10	↔
30314	15	<10	↑ 150.0%
30315	33	16	↑ 106.3%
30316	22	10	↑ 120.0%
30317	<10	0	↔
30318	31	33	↓ 6.1%
30319	<10	<10	↔
30324	10	14	↓ 28.6%
30326	<10	<10	↔
30327	14	24	↓ 41.7%
30328	27	39	↓ 30.8%
30331	53	39	↑ 35.9%
30334	0	0	↔
30336	0	0	↔
30337	<10	<10	↔

Zip Code	Recent 14-day reporting period (10/31–11/13)	Previous 14-day reporting period (10/17–10/30)	% Change between reporting periods
30338	<10	<10	↔
30339	<10	<10	↔
30340	0	0	↔
30341	0	0	↔
30342	24	30	↓ 20.0%
30344	25	17	↑ 47.1%
30349	46	23	↑ 100.0%
30350	22	12	↑ 83.3%
30354	12	<10	↑ 71.4%
30358	0	0	↔
30363	<10	<10	↔
30606	0	0	↔
31131	0	0	↔
31150	0	0	↔
Unknown	<10	<10	↔

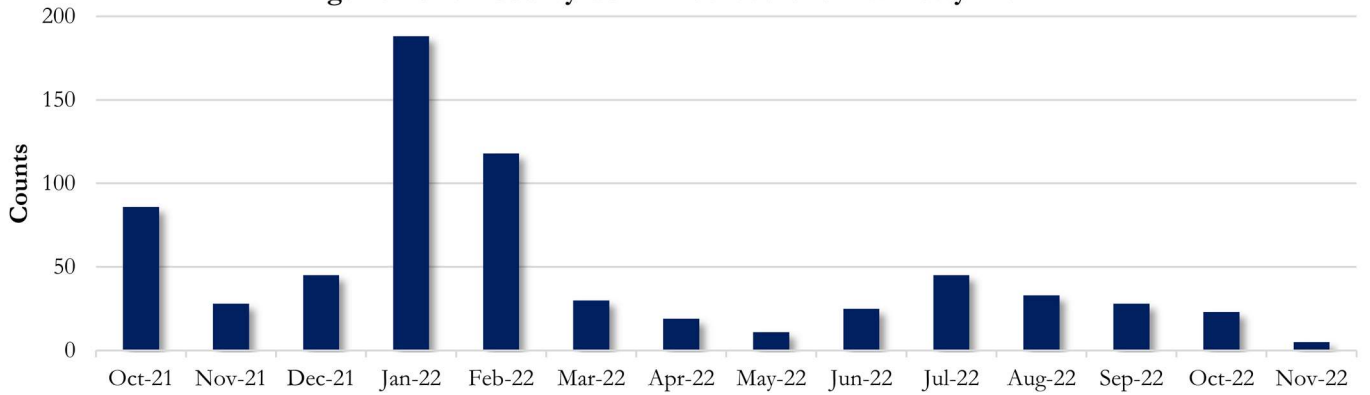
<sup>1</sup>**New cases:** Cases diagnosed in most recent 28 days (based on reported dates of positive sample collection). To allow for lag in reporting results of new diagnoses from samples collected in the most recent week, data used for incident diagnoses analyses were moved back by one week. <sup>2</sup>**Percent change:** These reflect the percentage increase or decrease of new diagnoses between the 14 days preceding the past 7 days and the 14 days preceding that. Changes in ZIP codes with less than 10 cases in both 2 week intervals are not reported.

**COVID-19 HOSPITALIZATIONS, ICU ADMISSIONS AND DEATHS IN FULTON**

**Fig. 11. Fulton County Covid-19 Cases Hospitalized and Admitted to ICU by Month**

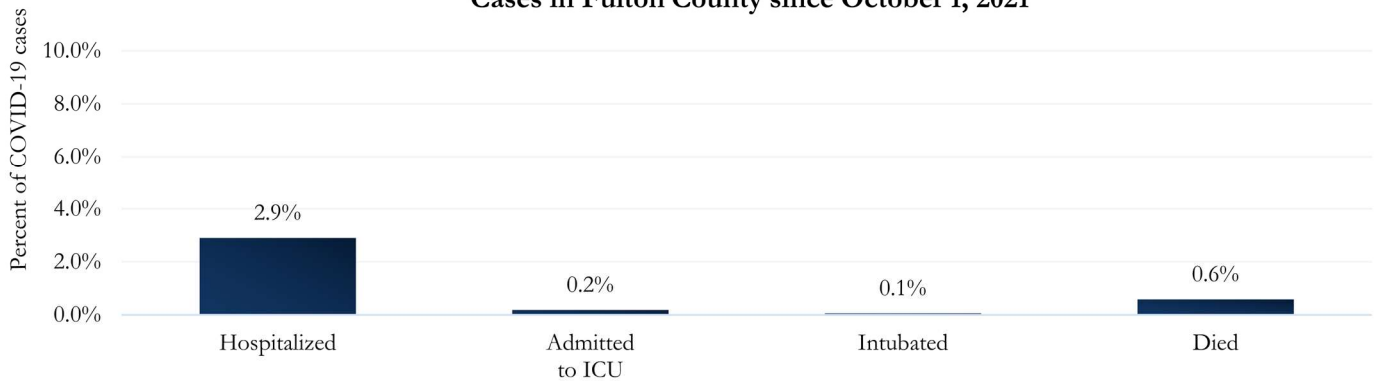


**Fig. 12. Fulton County Confirmed Covid-19 Deaths by Month**



Values for September and October 2022 in figures 11 and 12 are subject to change as more hospitalizations, ICU admissions, and deaths get reported to state and local entities.

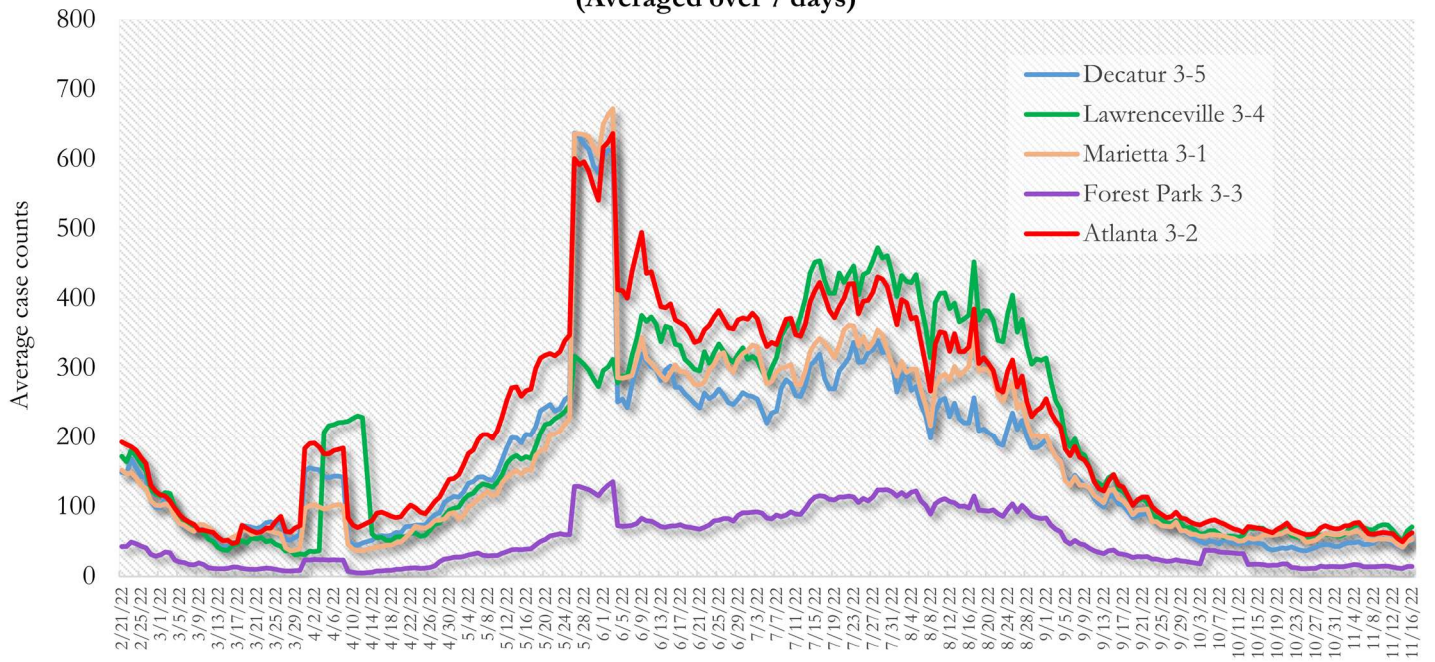
**Fig. 13. Hospitalizations, ICU Admissions, Intubations, and Deaths among all Covid-19 Cases in Fulton County since October 1, 2021**





### COVID-19 CASE TRENDS IN FULTON AND SURROUNDING DISTRICTS

**Fig. 14. Daily Case Counts for Atlanta Metro Districts  
(Averaged over 7 days)**



## DEMOGRAPHIC DISTRIBUTIONS – COVID-19 CASES AND DEATHS

**Table A** - Cumulative and recent confirmed Covid-19 case and death counts by gender, age, and race/ethnicity in Fulton County, Georgia. Past 28 day period refers to October 18 – November 14, 2022

	Total Confirmed Cases	% of Total Cases	Confirmed Cases past 28 days	% of Confirmed Cases past 28 days	Total Confirmed Deaths	% of Total Deaths	Confirmed Deaths past 28 days	% of Confirmed Deaths past 28 days
<b>TOTAL</b>	<b>227197</b>		<b>1351</b>		<b>2316</b>		<b>&lt;10</b>	
Female	124341	54.7%	777	57.5%	1104	47.7%	<10	54.5%
Male	101863	44.8%	568	42.0%	1212	52.3%	<10	45.5%
Unknown*	993	<1%	6	<1%	0	-	0	-
0-9	15954	7.0%	91	6.7%	0	-	0	-
10-19	25403	11.2%	75	5.6%	<10	<1%	0	-
20-29	46005	20.2%	183	13.5%	<10	<1%	0	-
30-39	44119	19.4%	221	16.4%	67	2.9%	0	-
40-49	34126	15.0%	194	14.4%	84	3.6%	0	-
50-59	28684	12.6%	198	14.7%	242	10.4%	<10	18.2%
60-69	17809	7.8%	165	12.2%	460	19.9%	<10	27.3%
≥70	14893	6.6%	224	16.6%	1453	62.7%	<10	54.5%
Unknown*	204	<1%	<10	<1%	0	-	0	-
Asian, NH	12996	5.7%	122	9.0%	35	1.5%	0	-
Black, NH	98701	43.4%	514	38.0%	1464	63.2%	<10	45.5%
White, NH	69826	30.7%	406	30.1%	715	30.9%	<10	54.5%
Hispanic, all races	21848	9.6%	98	7.3%	93	4.0%	0	-
Other, NH	6339	2.8%	35	2.6%	<10	<1%	0	-
Unknown*	17487	7.7%	176	13.0%	0	-	0	-

\*Unknown includes cases not yet interviewed. 28 days delayed by seven to account for lag in reporting lab results. Deaths refer to all persons who had a positive PCR test result for Covid-19 and there is evidence that Covid-19 was the cause of death or a significant contributor to their death.

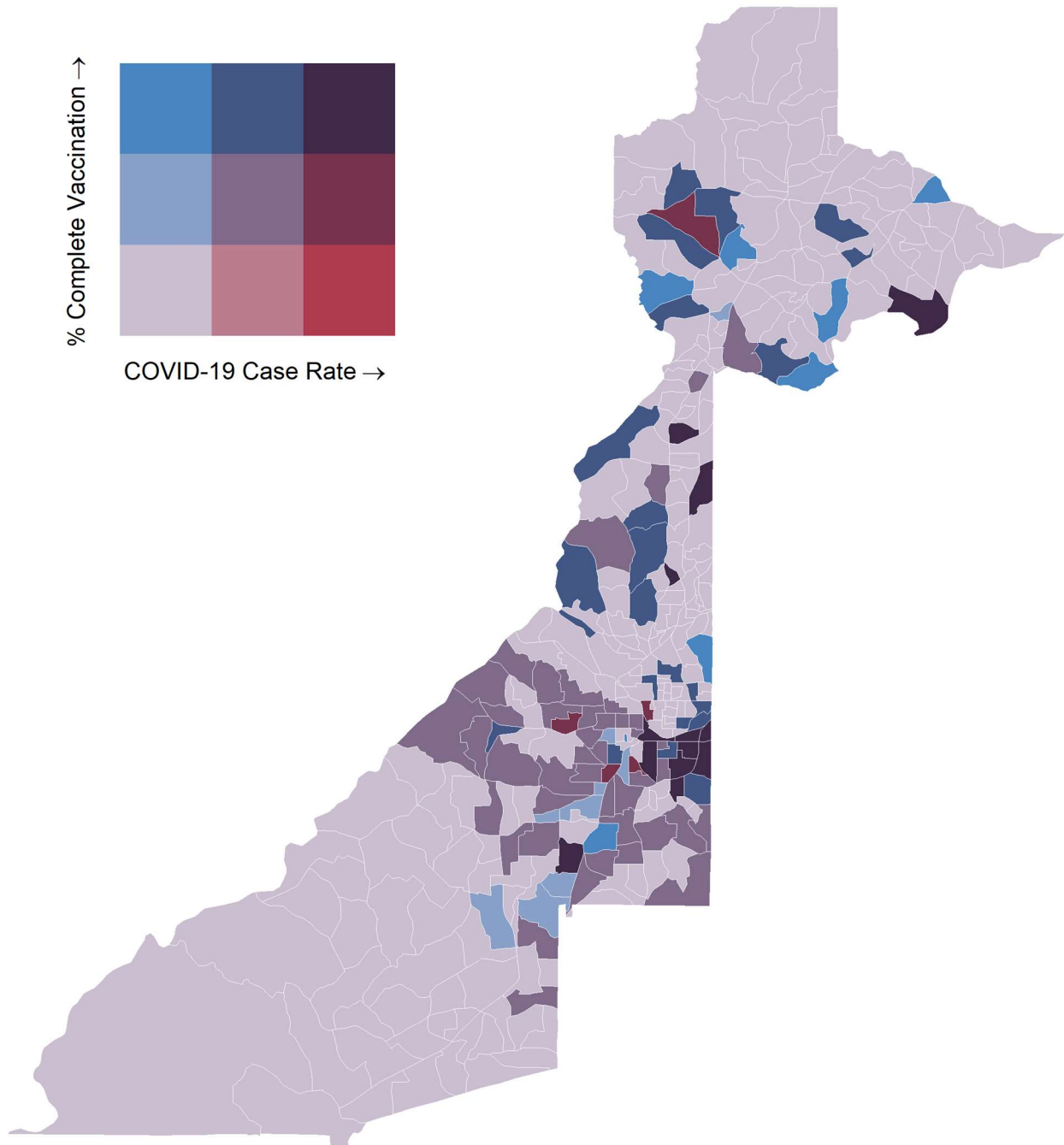


## Data are from confirmed cases and PCR testing only.

These data are generated using a fixed start date and counted forward in 14-day intervals. Using these time blocks allows for the stability in trends over time and accounts for delays in reporting lab results.

Please visit the Georgia Department of Public Health Daily Status Report [here](#) for cumulative daily counts.

Fig. 15. Percent Complete Vaccination and COVID-19 Case Rate (per 100,000 population) by Census Tract October 10 – November 6, 2022

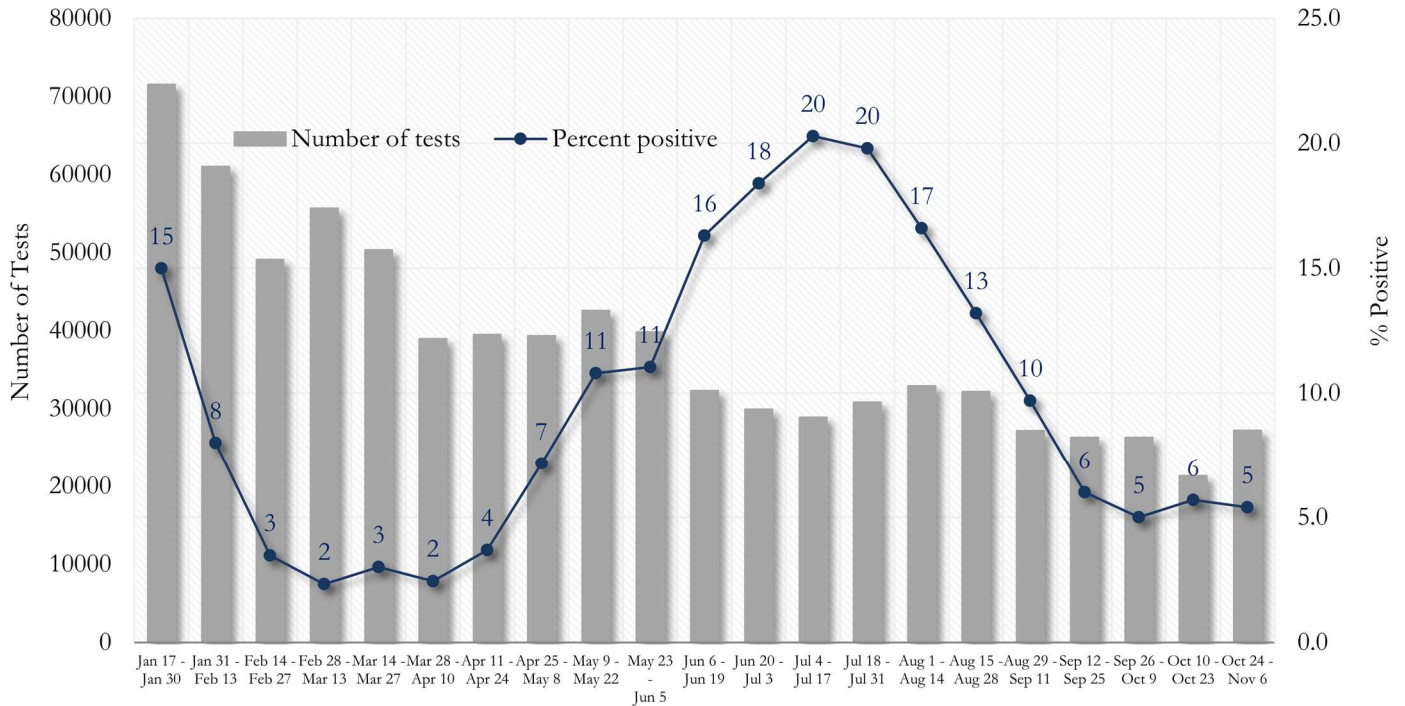


**How to interpret these colors:** The brighter the blue, the better. The upper most blue box indicates low COVID-19 case rates and high vaccination coverage. Red is not ideal as red indicates high COVID-19 case rates and low vaccination coverage. Colors in between indicate varying combinations of COVID-19 case rates and vaccination coverage. COVID-19 case rate reflects new COVID-19 cases diagnosed across Fulton County. Vaccination data from: <https://experience.arcgis.com/experience/3d8eea39f5c1443db1743a4cb8948a9c>



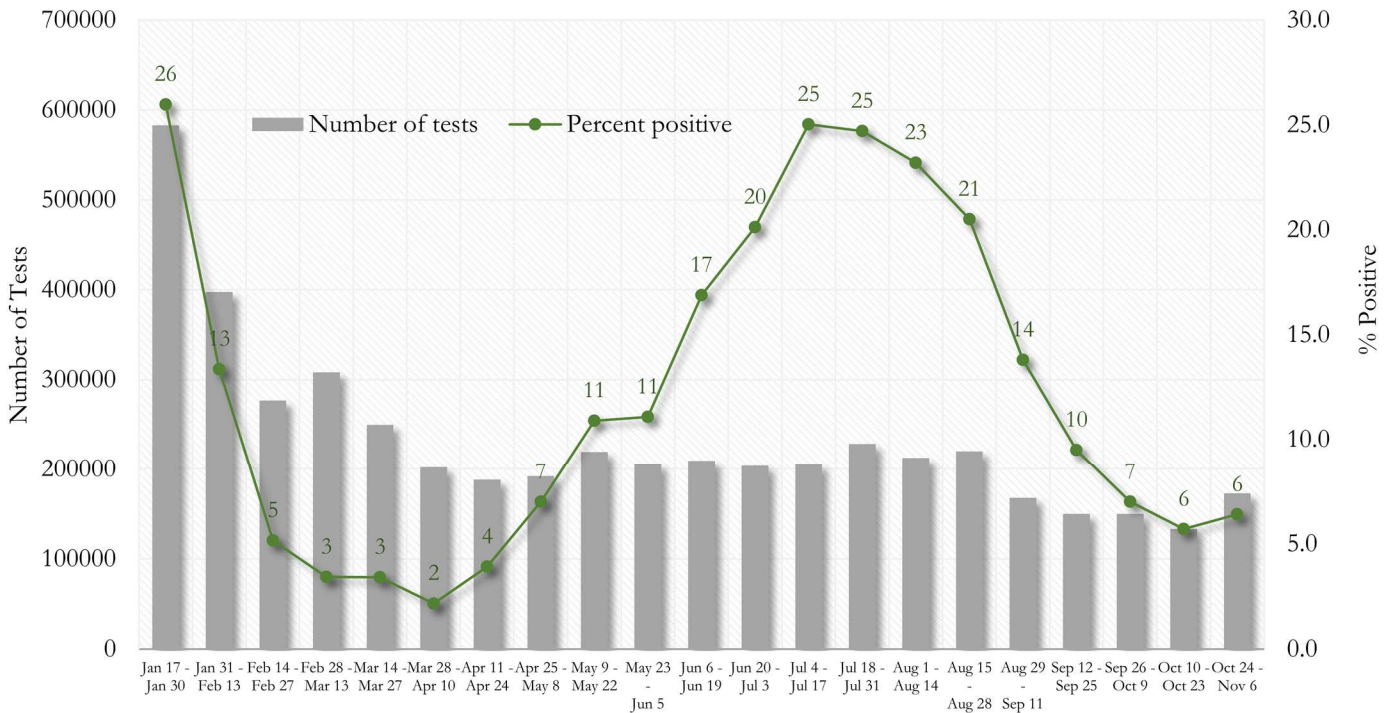
**COVID-19 TESTING AND POSITIVITY IN FULTON COUNTY AND GEORGIA**

**Fig. 16. Trends in Positive Covid-19 Tests in Fulton County by 14-day Periods**



\*Data on Polymerase Chain Reaction (PCR) tests only included. Table unable to be updated this week.

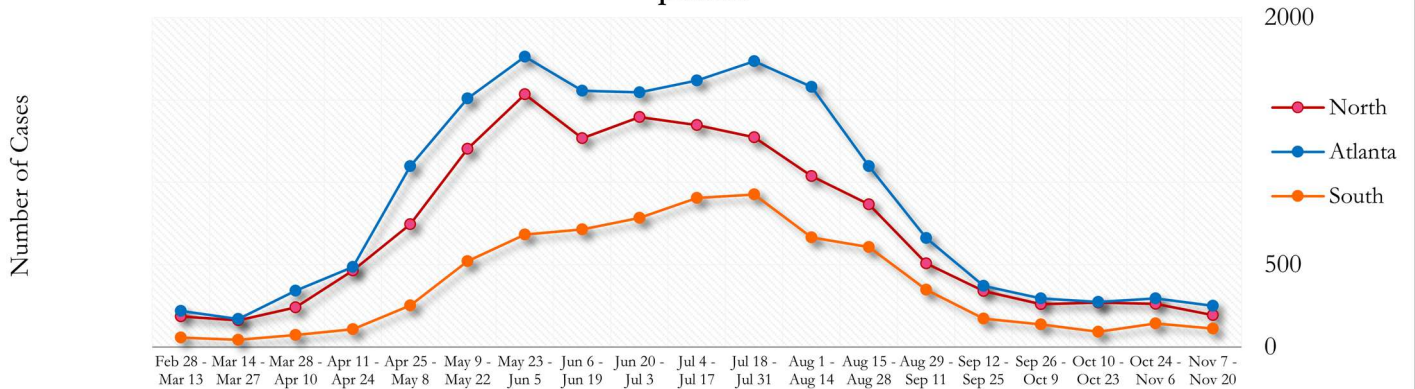
**Fig. 17. Trends in Positive Covid-19 Tests in Georgia by 14-day Periods**



\*Data on Polymerase Chain Reaction (PCR) tests only included. Table unable to be updated this week.

**TRENDS IN COVID-19 CASES AMONG DEMOGRAPHIC GROUPS (14 DAY PERIODS)**

**Fig. 18. Trends in Geographic Distribution of Covid-19 Cases in Fulton County by 14-day periods**

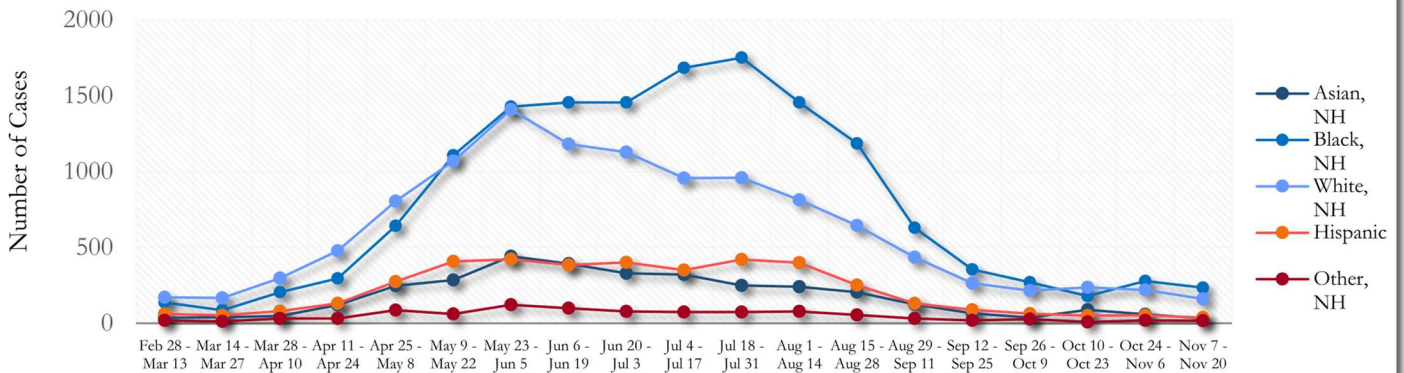


In the past two weeks, Atlanta accounted for the majority of new cases.

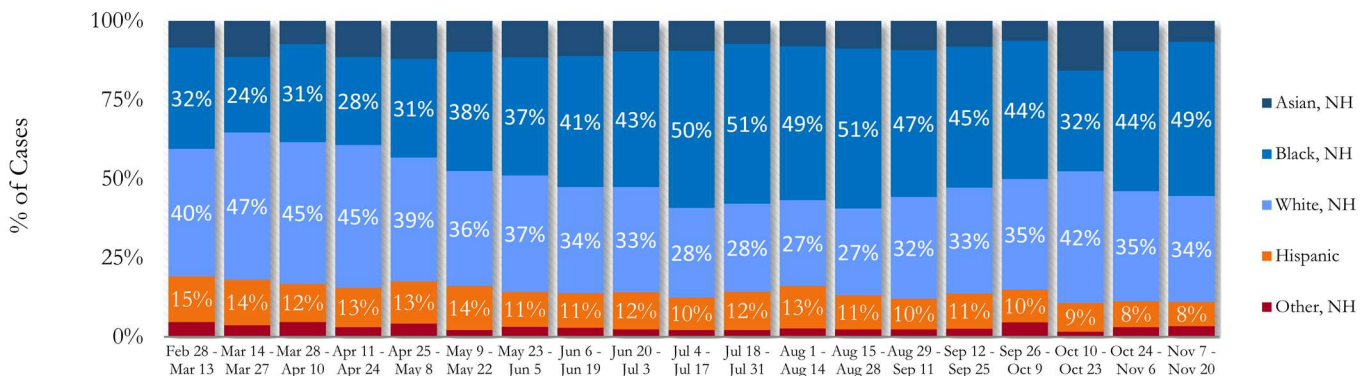
\*North - Includes all Fulton cities north of Atlanta (Alpharetta, Johns Creek, Milton, Mountain Park, Roswell, Sandy Springs)

\*South - Includes all Fulton cities south of Atlanta (Chattahoochee Hills, College Park, East Point, Fairburn, Hapeville, Palmetto, South Fulton, and Union City)

**Fig. 19. Trends in Racial Distribution of Covid-19 Cases in Fulton County by 14-day periods**



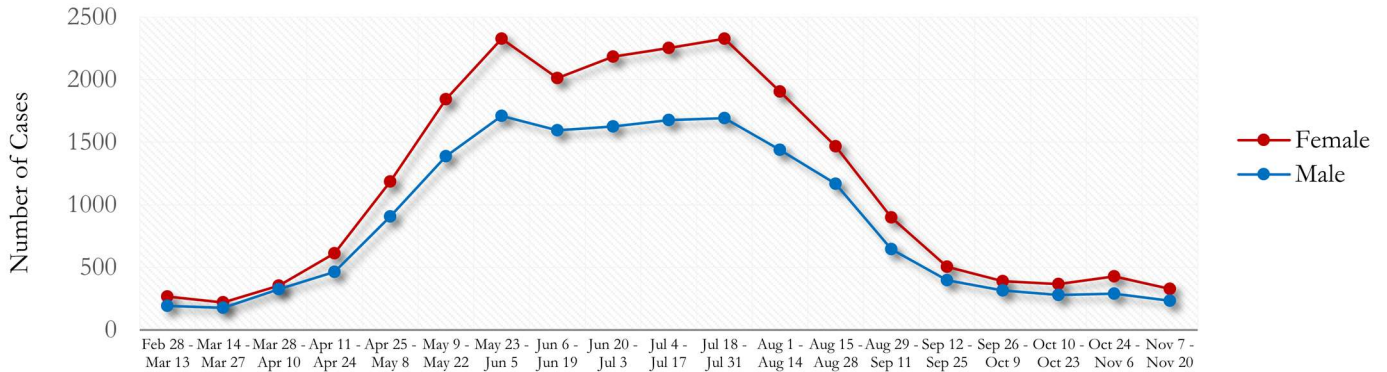
**Fig. 20. Racial Distribution of Covid-19 Cases in Fulton County by 14-day periods**



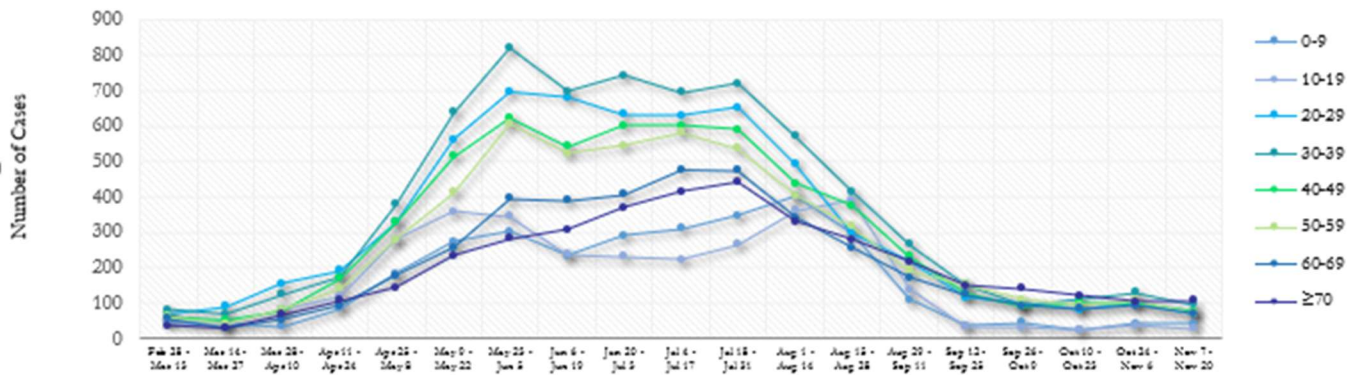
About 8% of all Fulton County COVID cases are missing data on patient race and ethnicity and in the past two weeks, about 14% of cases are missing this data. Percentages do not include the missing data and thus are subject to change as data are cleaned.



**Fig. 21. Trends in Sex Distribution of Covid-19 Cases in Fulton County by 14-day periods**

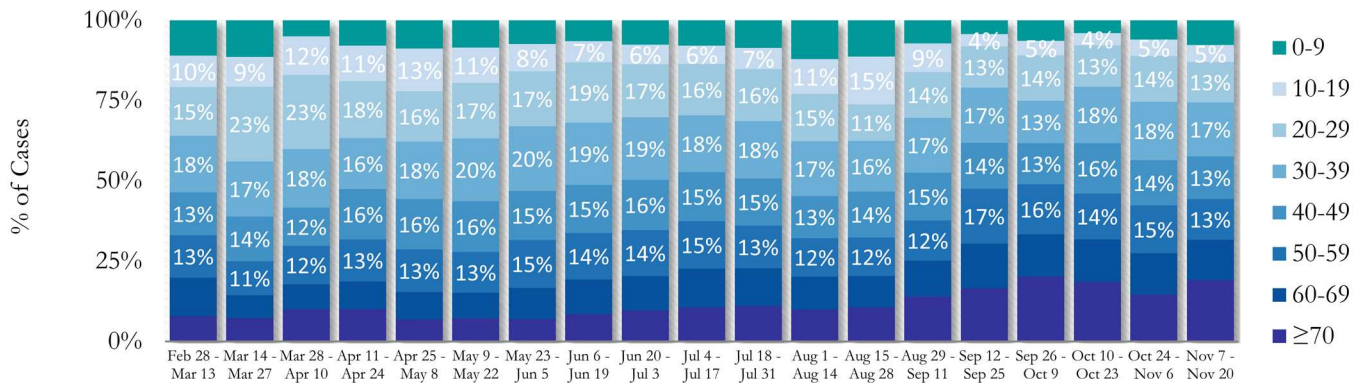


**Fig. 22. Trends in Age Distribution of Covid-19 Cases in Fulton County by 14-day periods**



In the most recent two weeks, 50-59 year olds and ≥70 year olds accounted for the majority of new cases.

**Fig. 23. Age Distribution of Covid-19 Cases in Fulton County by 14-day periods**



Value labels under 10% are not shown. Percentages do not include the missing data and thus are subject to change as data are cleaned.

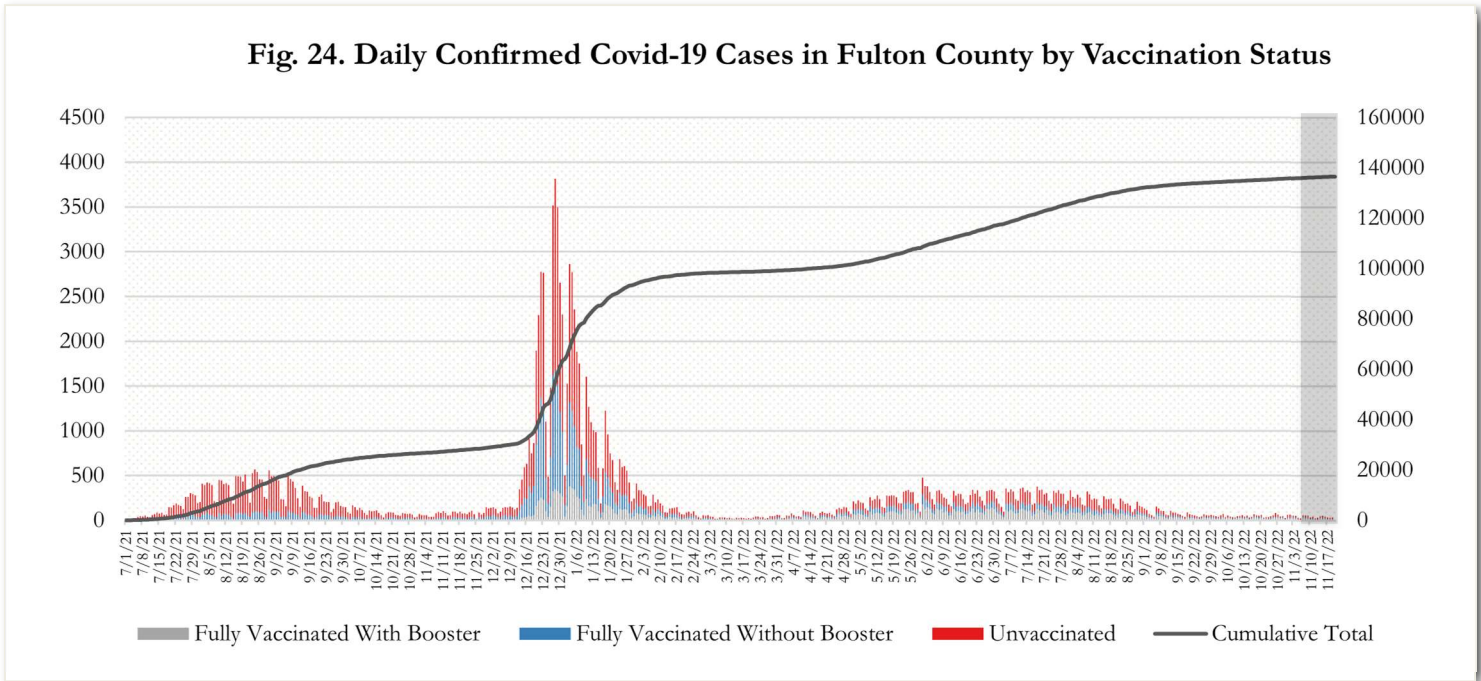


## FULTON COUNTY VACCINATION CASE DATA

There are currently **360,272 fully vaccinated plus boosted residents** in Fulton County, of which **6% have been a confirmed case of Covid-19 since 12/31/20**. There are **305,463 fully vaccinated but not boosted residents** in Fulton County, of which **12% have been a confirmed case of Covid-19 since 12/31/20**. Of the **370,465 partially vaccinated or unvaccinated** Fulton County residents, **29% have been a confirmed case of Covid-19 since 12/31/20**.

Since July 1, 2021, Fulton County has reported **168,910 new confirmed Covid-19 cases**. **66% (109,034)** of these new cases occurred in **unvaccinated individuals**. **34% (59,876)** of these new cases occurred in **fully vaccinated individuals**.

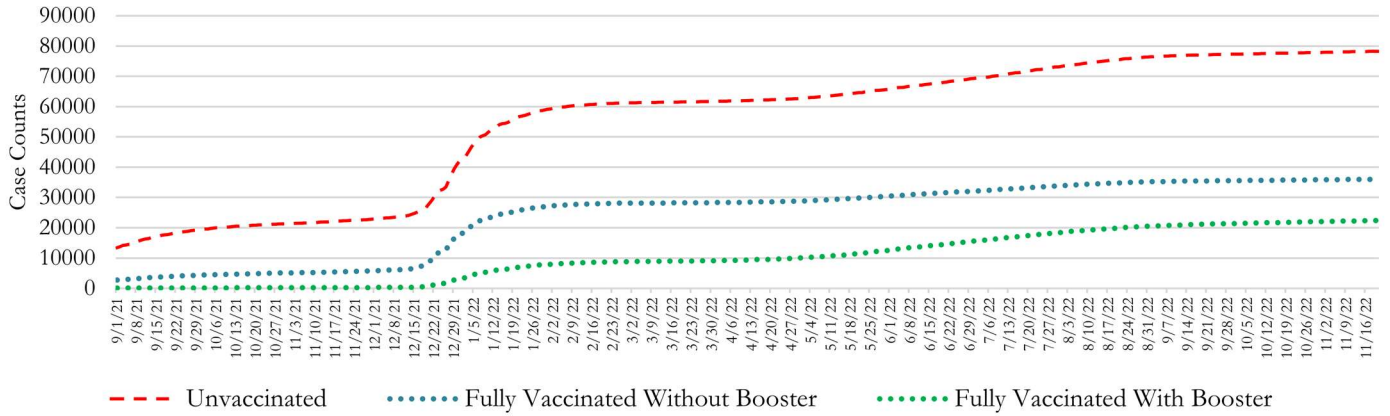
**Fig. 24. Daily Confirmed Covid-19 Cases in Fulton County by Vaccination Status**



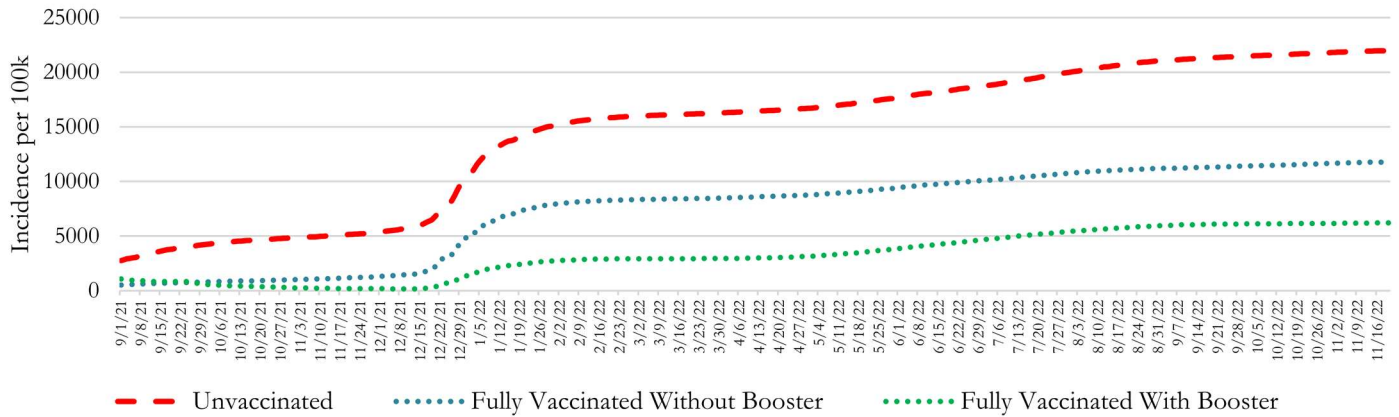
Fully vaccinated without booster includes those who are not yet eligible for a booster due to age or date of receiving their primary series.

**CASE COUNTS AND RATES BY VACCINATION AND BOOSTER STATUS**

**Fig. 25. Fulton County Cumulative Case Counts of Covid-19 by Vaccination and Booster Status**

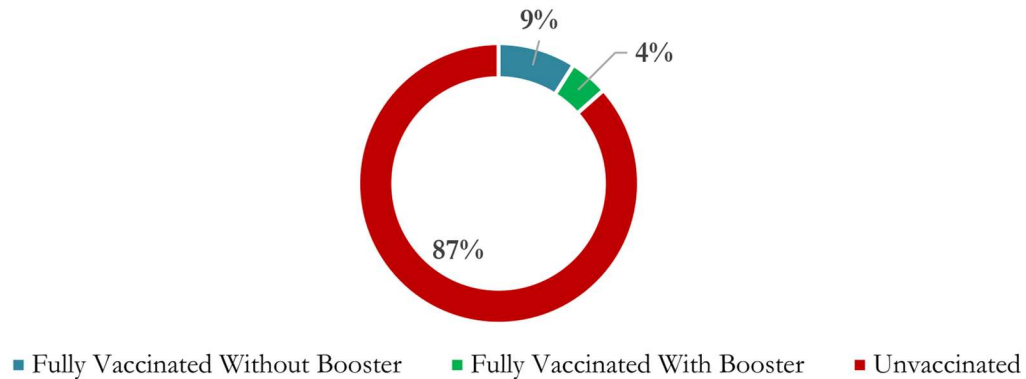


**Fig. 26. Fulton County Cumulative Incidence Rates of Covid-19 by Vaccination and Booster Status**



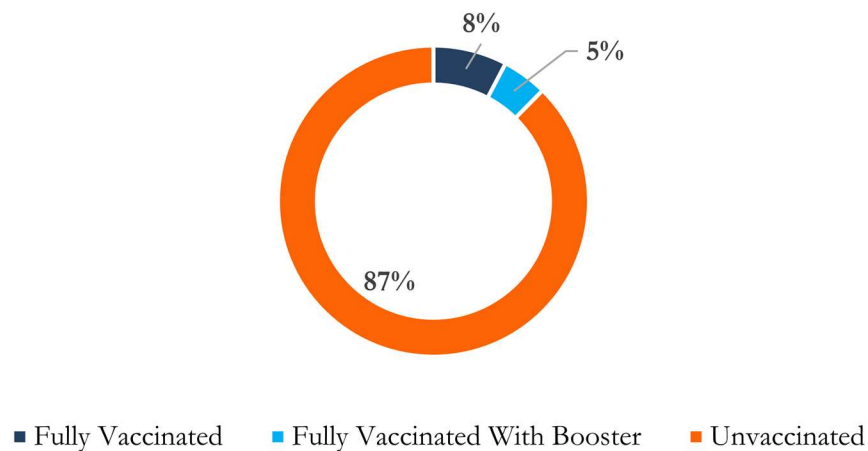
**SEVERE OUTCOMES BY VACCINATION STATUS**

**Fig. 27. Confirmed Cases Hospitalized for Any Reason by Vaccination Status**



In accordance with DPH, data is displayed as confirmed cases hospitalized “for any reason” and tested positive for Covid-19. They were not necessarily hospitalized due to Covid-19.

**Fig. 28. Confirmed Covid-19 Deaths by Vaccination Status**



Of the 13% of deaths that occurred in vaccinated individuals, **91% were over the age of 60**. Of that, **80% were over the age of 70**.