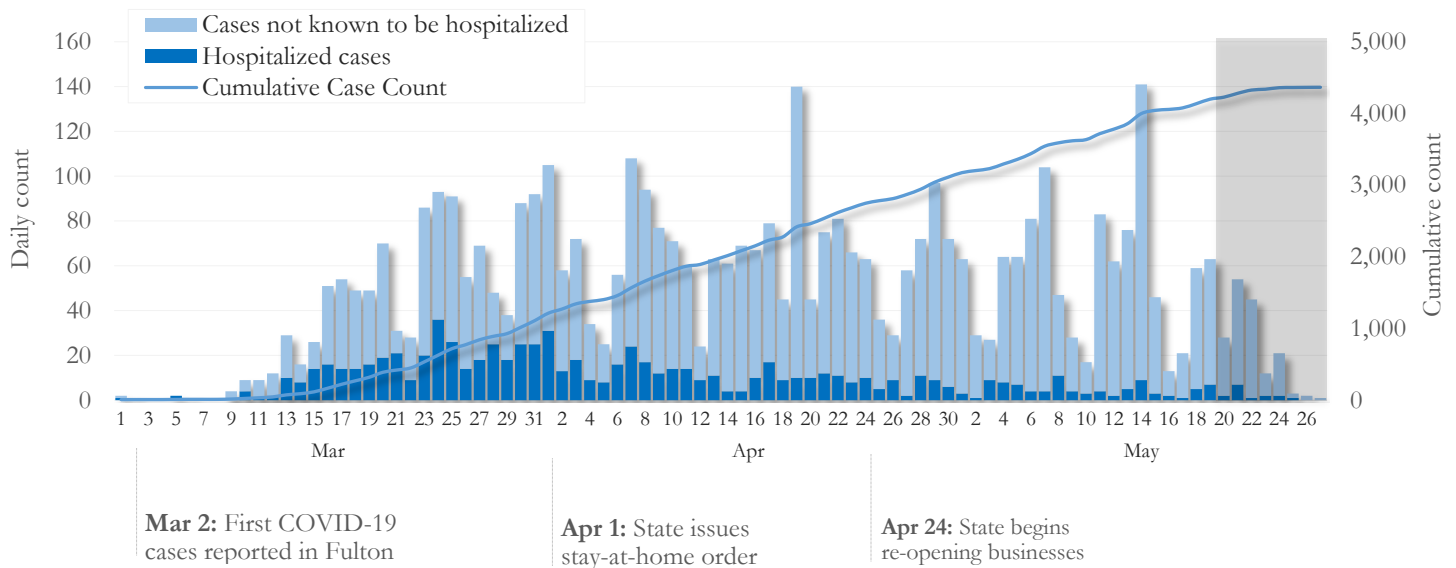


SUMMARY

- As of May 27, 2020, Fulton County has recorded **4,365** cases of the 2019 novel coronavirus (COVID-19) and **211** deaths.
- The central portion of the county (Atlanta metro) accounts for 46% of the cumulative case count while the northern and southern parts of the county together account for 43% of the COVID-19 cumulative case count in the county.
- By city, cumulative COVID-19 diagnoses rates range from 135.1 per 100,000 persons (Johns Creek) to 811.1 per 100,000 persons (Union City).
- Among all persons diagnosed with COVID-19 in Fulton County, 18.6% required hospitalization and 4.8% died.
- Residents and staff of long-term care facilities account for 24% of COVID-19 diagnoses and 42% of COVID-19 deaths in Fulton County.

Fig. 1. Daily and Cumulative COVID-19 diagnoses in Fulton County, GA (5/27/20)



*Counts shown reflect the number of confirmed cases as of 5/27/20 9:00am using the date of first positive sample collection. Where date of sample collection was not available or missing, the date of report creation in GA SENDSS was used instead. **Note:** All data reported are preliminary and subject to change. Delays in data reporting may cause changes in data counts, particularly in the shaded portion.

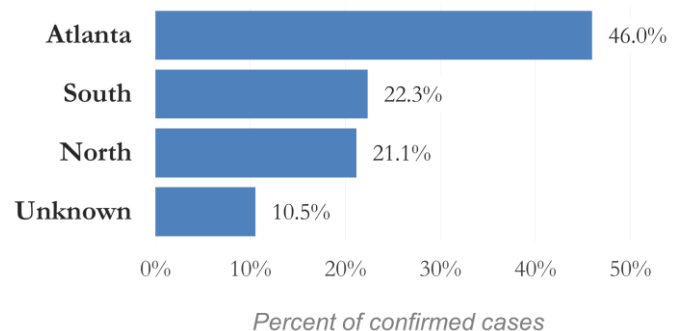
DISTRIBUTION OF COVID-19 DIAGNOSES BY REGION

New cases: 48% of the new COVID-19 cases diagnosed in the past 2 weeks occurred in Atlanta while 25% and 21% occurred in the Northern and Southern regions of the county respectively.

| Fulton Region | % Cumulative count | % New cases* |
|------------------------|--------------------|--------------|
| Atlanta | 46.0% | 48.4% |
| North ¹ | 21.1% | 24.6% |
| South ² | 22.3% | 21.0% |
| Unincorporated/Unknown | 10.5% | 6.0% |

¹Includes all Fulton County cities north of Atlanta metro (Alpharetta, Milton, Johns Creek, Roswell, Sandy Springs, Mountain Park) | ²Includes all cities south of Atlanta (College Park, Chattahoochee Hills, East Point, Hapeville, Palmetto, South Fulton, Fairburn, and Union City) ***New cases:** Cases diagnosed in the past 2 weeks only (using the date of sample collection).

Fig. 2. Distribution of Cumulative COVID-19 Case Count by Region (5/27/20)

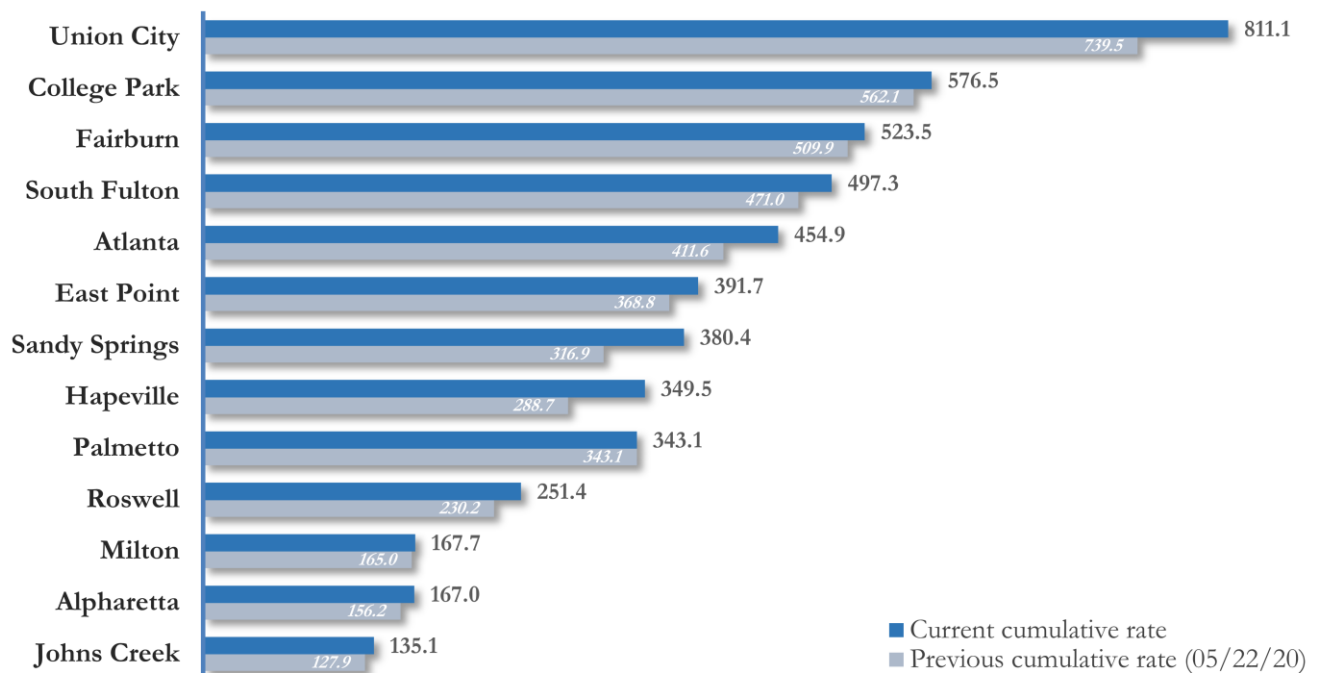


COVID-19 CASE COUNTS AND RATES BY CITY

| | Prior Count (5/22/2020) | Current Count (5/27/20) | Percent (County Total) | % Change from prior Count | Cumulative Rate (Per 100,000 pop.) | New Cases Diagnosed in Past 14 Days ¹ (Count) |
|---------------|----------------------------|----------------------------|---------------------------|------------------------------|---------------------------------------|--|
| Atlanta | 1816 | 2007 | 46.0% | 10.5% | 454.9 | 283 |
| South Fulton | 448 | 473 | 10.8% | 5.6% | 497.3 | 41 |
| Sandy Springs | 334 | 401 | 9.2% | 20.1% | 380.4 | 81 |
| Roswell | 217 | 237 | 5.4% | 9.2% | 251.4 | 32 |
| East Point | 129 | 137 | 3.1% | 6.2% | 391.7 | 12 |
| Johns Creek | 107 | 113 | 2.6% | 5.6% | 135.1 | <10 |
| Union City | 155 | 170 | 3.9% | 9.7% | 811.1 | 52 |
| Alpharetta | 101 | 108 | 2.5% | 6.9% | 167.0 | 19 |
| Milton | 63 | 64 | 1.5% | 1.6% | 167.7 | <10 |
| Fairburn | 75 | 77 | 1.8% | 2.7% | 523.5 | <10 |
| College Park | 78 | 80 | 1.8% | 2.6% | 576.5 | 11 |
| Palmetto | 15 | 15 | 0.3% | 0.0% | 343.1 | No new cases |
| Hapeville | 19 | 23 | 0.5% | 21.1% | 349.5 | <10 |
| Mountain Park | <10 | <10 | 0.0% | - | - | No new cases |
| Unknown | 502 | 460 | 10.5% | - | - | - |

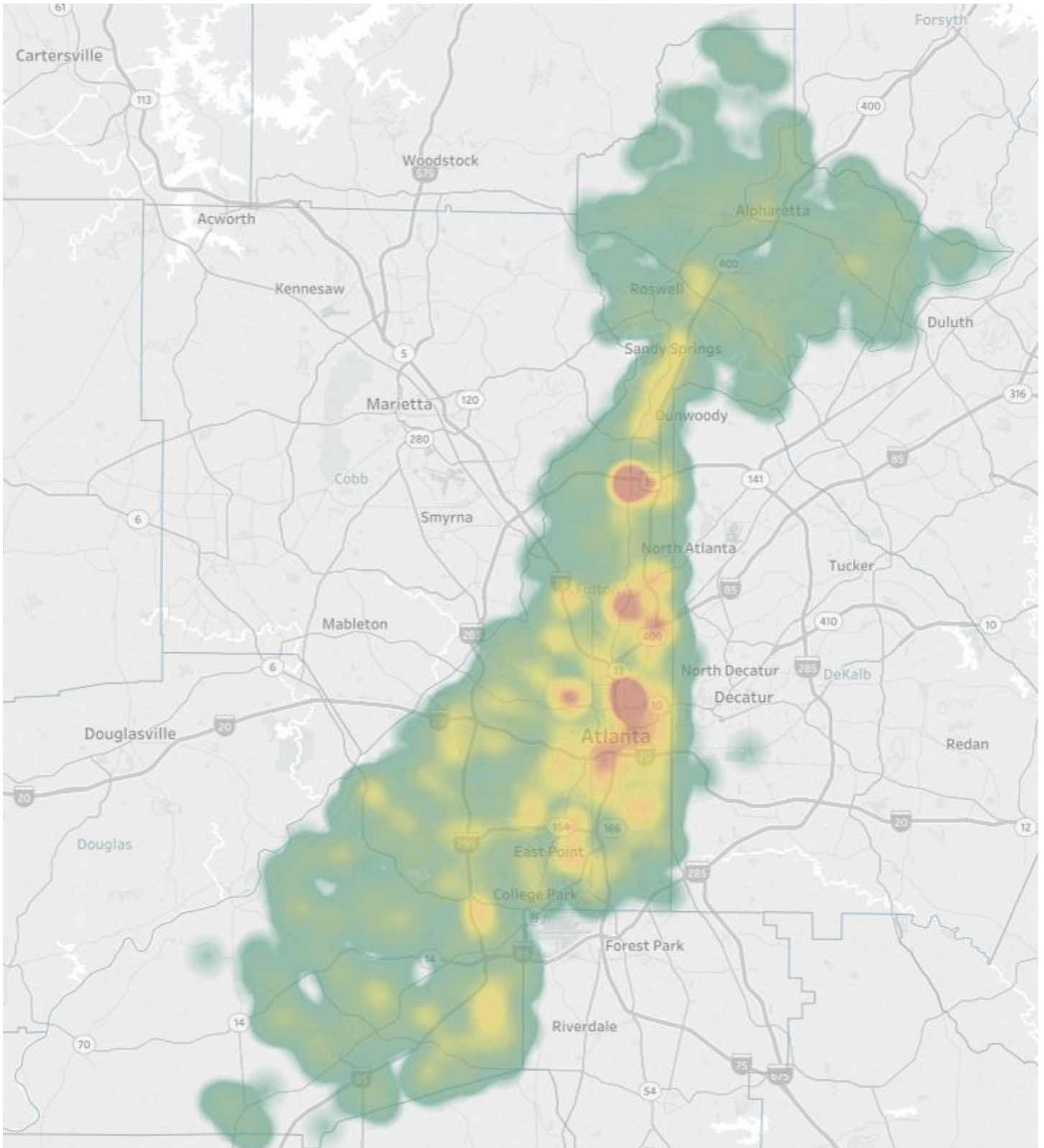
Population estimates from US Census Bureau used to calculate diagnoses rates. ** Data cleaning (either during case interviews or address geo-coding) may lead to reassignment of few cases from one territory to another based on their corrected addresses. These may appear as “decreases” when compared to the previous day’s count. These do not reflect errors in the data collection or analysis process but only reflect the minor day-to-day fluctuations in case counts that arise in an evolving public health database like COVID’s. **Note:** Sharp increases in territorial COVID case counts often reflect new cases diagnosed at long term care facilities located in those territories during facility-wide /mass screening events. ¹**New cases:** Cases diagnosed in the past 2 weeks only (using the date of sample collection). **All data reported are preliminary and subject to change.**

Fig. 3. COVID-19 Diagnoses Rate in Fulton County by City (05/27/20)



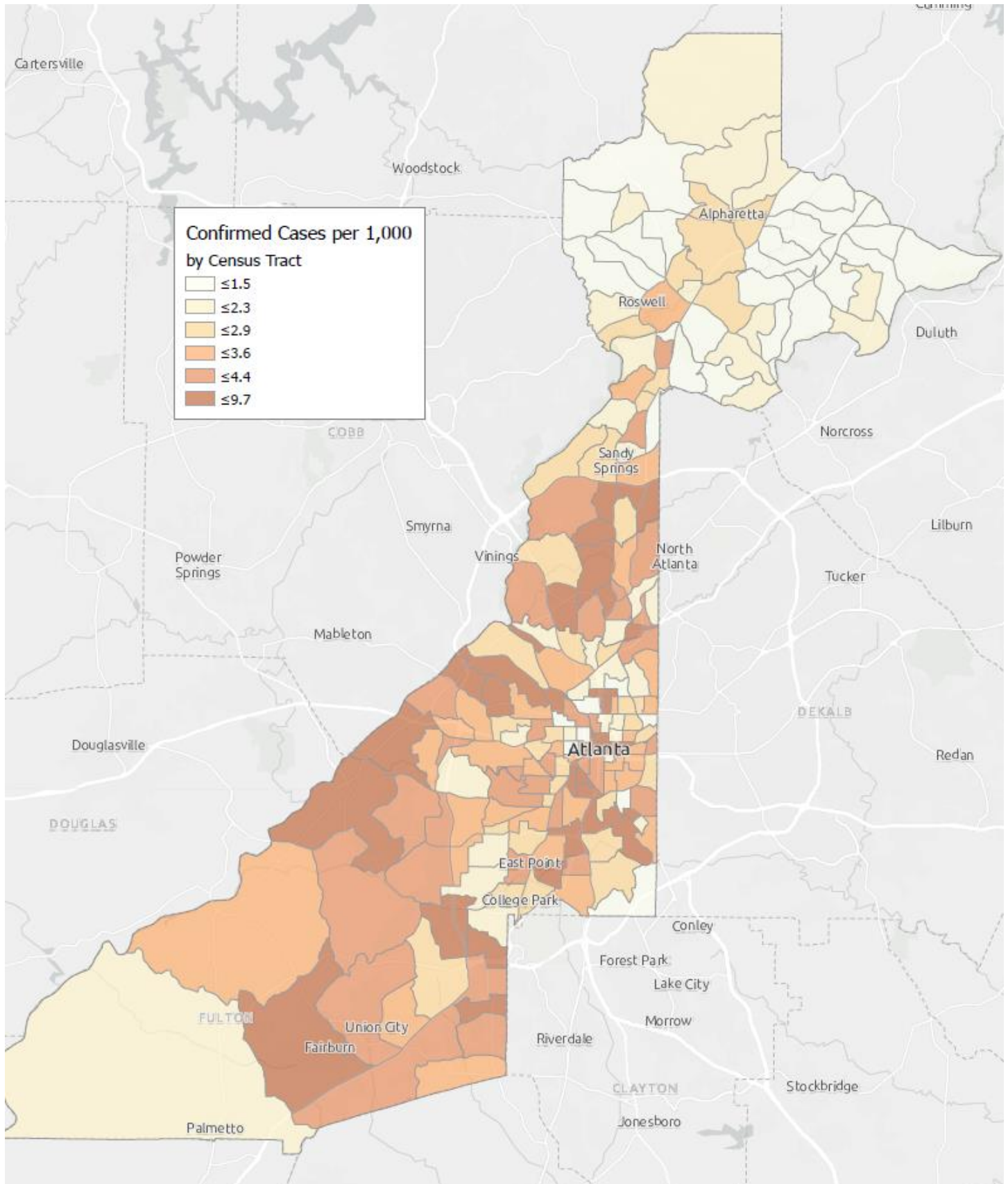
*Rates shown are per 100,000 persons | **Note:** Mass testing in specific locations (e.g. long term care facilities) may cause sharp increases in the cumulative rate of COVID-19 diagnosis in those territories. All data shown are preliminary and are subject to change as testing results get updated.

Fig. 4. Density Map of COVID-19 Cases in Fulton County (5/27/20)



NB. Data used excludes the outbreak-related cases diagnosed at long-term care facilities and reflects the current geographical distribution of COVID19 diagnoses in the general Fulton County community.

Fig. 5. COVID19 Diagnosis Rates in Fulton County by Census Tract (5/27/2020)



*Rates shown are per 1,000 populations.

NB. Data used excludes the outbreak-related cases diagnosed at long-term care facilities and reflects the current geographical distribution of COVID19 diagnoses in

COVID-19 CASE COUNTS BY ZIP CODE

| ZIP code | Prior Count (5/22/2020) | Current Count (5/27/20) | Percent (County Total) | % Change from Prior ZIP-level Count | New Cases Diagnosed in Past 14 Days ¹ (Count) |
|----------|----------------------------|----------------------------|---------------------------|--|---|
| 30331 | 334 | 346 | 7.9% | 3.6% | 29 |
| 30318 | 225 | 256 | 5.9% | 13.8% | 31 |
| 30349 | 234 | 255 | 5.8% | 9.0% | 30 |
| 30213 | 173 | 178 | 4.1% | 2.9% | 15 |
| 30315 | 134 | 146 | 3.3% | 9.0% | 17 |
| 30344 | 123 | 131 | 3.0% | 6.5% | 10 |
| 30311 | 116 | 128 | 2.9% | 10.3% | 13 |
| 30342 | 164 | 209 | 4.8% | 27.4% | 49 |
| 30314 | 152 | 169 | 3.9% | 11.2% | 75 |
| 30310 | 118 | 132 | 3.0% | 11.9% | 14 |
| 30308 | 77 | 80 | 1.8% | 3.9% | <10 |
| 30022 | 88 | 97 | 2.2% | 10.2% | 14 |
| 30327 | 82 | 99 | 2.3% | 20.7% | 18 |
| 30004 | 89 | 91 | 2.1% | 2.2% | <10 |
| 30309 | 130 | 138 | 3.2% | 6.2% | 15 |
| 30076 | 75 | 87 | 2.0% | 16.0% | 12 |
| 30291 | 177 | 195 | 4.5% | 10.2% | 49 |
| 30350 | 75 | 86 | 2.0% | 14.7% | 14 |
| 30075 | 129 | 135 | 3.1% | 4.7% | 17 |
| 30328 | 89 | 101 | 2.3% | 13.5% | 19 |
| 30316 | 38 | 43 | 1.0% | 13.2% | <10 |
| 30312 | 204 | 218 | 5.0% | 6.9% | 16 |
| 30005 | 47 | 47 | 1.1% | 0.0% | <10 |
| 30305 | 81 | 102 | 2.3% | 25.9% | 16 |
| 30306 | 44 | 46 | 1.1% | 4.5% | <10 |
| 30324 | 88 | 105 | 2.4% | 19.3% | 21 |
| 30337 | 72 | 75 | 1.7% | 4.2% | 10 |
| 30009 | 46 | 49 | 1.1% | 6.5% | <10 |
| 30313 | 34 | 38 | 0.9% | 11.8% | <10 |
| 30326 | 24 | 27 | 0.6% | 12.5% | <10 |
| 30097 | 39 | 41 | 0.9% | 5.1% | <10 |
| 30354 | 35 | 40 | 0.9% | 14.3% | <10 |
| 30303 | 30 | 31 | 0.7% | 3.3% | <10 |
| 30339 | 12 | 12 | 0.3% | 0.0% | <10 |
| 30268 | 21 | 21 | 0.5% | 0.0% | No new cases |
| 30307 | 15 | 18 | 0.4% | 20.0% | <10 |
| 30319 | 27 | 27 | 0.6% | 0.0% | <10 |
| 30336 | 12 | 15 | 0.3% | 25.0% | <10 |
| 30296 | 10 | 10 | 0.2% | 0.0% | No new cases |
| 30363 | <10 | <10 | 0.2% | - | No new cases |
| 30301 | <10 | <10 | <0.1% | - | <10 |
| 30345 | <10 | 10 | 0.2% | - | <10 |
| 31131 | <10 | <10 | <0.1% | - | No new cases |
| 30023 | <10 | <10 | <0.1% | - | <10 |
| 30080 | <10 | <10 | <0.1% | - | No new cases |
| 30135 | <10 | <10 | <0.1% | - | No new cases |
| 30138 | <10 | <10 | <0.1% | - | No new cases |
| 30139 | <10 | <10 | <0.1% | - | No new cases |
| 30321 | <10 | <10 | <0.1% | - | No new cases |
| 30340 | <10 | <10 | 0.2% | - | <10 |
| 30341 | 16 | 17 | 0.4% | 6.3% | <10 |

| | | | | | |
|---------|-----|-----|-------|---------|--------------|
| 30358 | <10 | <10 | <0.1% | - | No new cases |
| 30374 | 19 | 18 | 0.4% | -5.3%** | No new cases |
| 30606 | <10 | <10 | <0.1% | - | No new cases |
| 31150 | <10 | <10 | <0.1% | - | No new cases |
| 30024 | <10 | <10 | <0.1% | - | No new cases |
| 30098 | <10 | <10 | <0.1% | - | No new cases |
| 30334 | <10 | <10 | <0.1% | - | <10 |
| 30338 | <10 | <10 | <0.1% | - | <10 |
| Unknown | 319 | 261 | 6.0% | - | - |

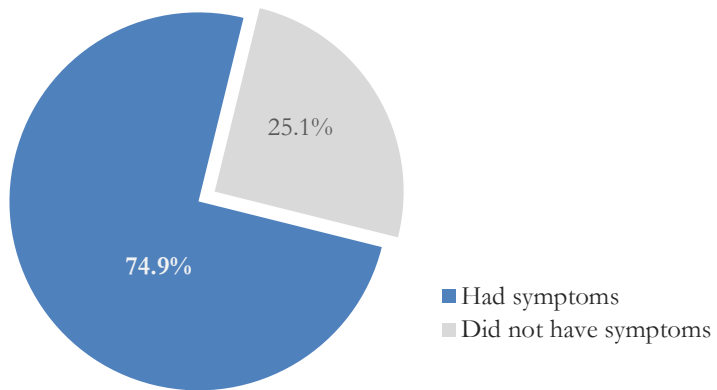
** Data cleaning (either during case interviews or address geo-coding) may lead to reassignment of few cases from one territory to another based on their corrected addresses. These may appear as "decreases" when compared to the previous day's count. These do not reflect errors in the data collection or analysis process but only reflect the minor day-to-day fluctuations in case counts that arise in an evolving public health database like COVID's. **Note:** Sharp increases in territorial COVID case counts often reflect new cases diagnosed at long term care facilities located in those territories during facility-wide/mass screening events. **1New cases:** Cases diagnosed in the past 2 weeks only (using the date of sample collection). **All data reported are preliminary and subject to change.**

REPORTING SYMPTOMS AMONG PERSONS DIAGNOSED WITH COVID-19 IN FULTON

People with COVID-19 have reported a wide range of symptoms ranging from mild symptoms to severe illness. Symptoms may appear 2-14 days after exposure to the virus. Symptoms reported include: cough, shortness of breath/difficulty breathing, fever, chills, repeated shaking with chills, muscle pain, headache, sore throat, new loss of taste or smell – Centers for Disease Control and Prevention (CDC)

<https://www.cdc.gov/coronavirus/2019-ncov/symptoms-testing/symptoms.html>

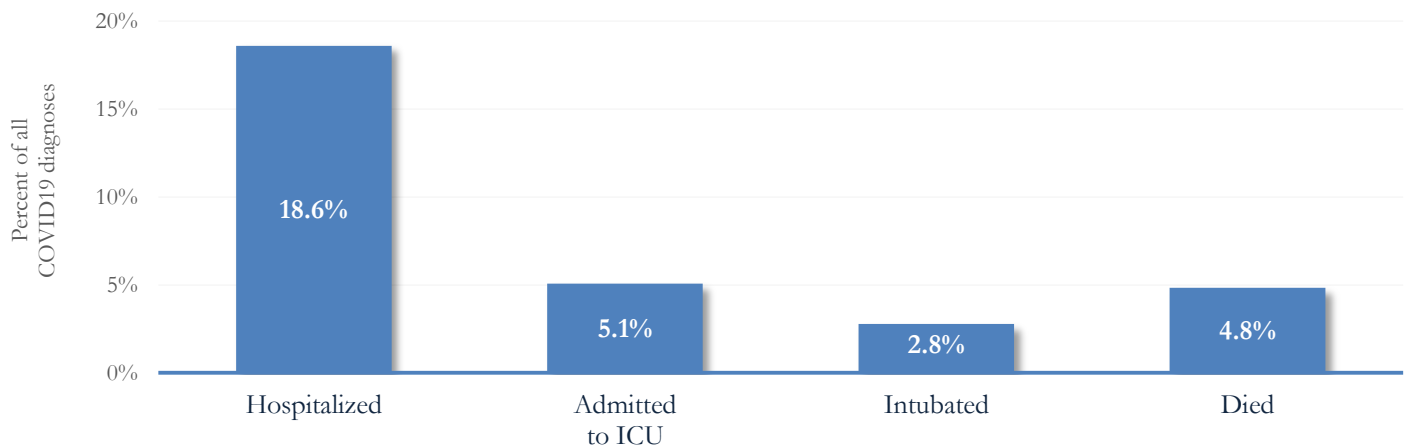
Fig. 6. Proportion reporting Symptoms in Fulton County (5/27/20)



COVID-19 cases who have been case interviewed or had medical charts reviewed as at 5/27/20 only

COVID-19 HOSPITALIZATIONS, ICU ADMISSIONS AND DEATHS IN FULTON

Fig. 7. Hospitalizations, ICU Admissions and Deaths among COVID-19 Diagnoses in Fulton County (5/27/20)



DEMOGRAPHIC DISTRIBUTIONS – COVID 19 DIAGNOSES AND DEATHS IN FULTON

Distribution of COVID-19 diagnoses in Fulton County by Fulton Region – 05/27/20

| | North Fulton Cities ¹ Count (%) | Atlanta Count (%) | South Fulton Cities ² Count (%) | Unknown City Count (%) | All Fulton Count (%) |
|-----------------------------|---|----------------------|---|---------------------------|-------------------------|
| Total COVID-19 cases | 923 | 2007 | 975 | 460 | 4365 |
| Gender: Female | 451 (48.9%) | 979 (48.8%) | 561 (57.5%) | 250 (54.3%) | 2241 (51.3%) |
| Male | 466 (50.5%) | 1010 (50.3%) | 407 (41.7%) | 202 (43.9%) | 2085 (47.8%) |
| Unknown | <10 | 18 (0.9%) | <10 | <10 | 39 (0.9%) |
| Age: <15 | 19 (2.1%) | 16 (0.8%) | <10 | 11 (2.4%) | 55 (1.3%) |
| 15-24 | 84 (9.1%) | 116 (5.8%) | 49 (5.0%) | 30 (6.5%) | 279 (6.4%) |
| 25-34 | 131 (14.2%) | 315 (15.7%) | 98 (10.1%) | 91 (19.8%) | 635 (14.5%) |
| 35-44 | 159 (17.2%) | 302 (15.0%) | 143 (14.7%) | 75 (16.3%) | 679 (15.6%) |
| 45-54 | 175 (19.0%) | 288 (14.3%) | 182 (18.7%) | 73 (15.9%) | 718 (16.4%) |
| 55-64 | 158 (17.1%) | 315 (15.7%) | 180 (18.5%) | 65 (14.1%) | 718 (16.4%) |
| ≥65 | 195 (21.1%) | 639 (31.8%) | 311 (31.9%) | 110 (23.9%) | 1255 (28.8%) |
| Unknown | <10 | 16 (0.8%) | <10 | <10 | 26 (0.6%) |
| Race: Asian, NH | 44 (4.8%) | 21 (1.0%) | <10 | 10 (2.2%) | 76 (1.7%) |
| Black, NH | 132 (14.3%) | 1086 (54.1%) | 710 (72.8%) | 170 (37.0%) | 2098 (48.1%) |
| White, NH | 320 (34.7%) | 311 (15.5%) | 71 (7.3%) | 76 (16.5%) | 778 (17.8%) |
| Hispanic | 120 (13.0%) | 60 (3.0%) | 34 (3.5%) | 36 (7.8%) | 250 (5.7%) |
| Other, NH | 28 (3.0%) | 38 (1.9%) | 14 (1.4%) | 14 (3.0%) | 94 (2.2%) |
| Unknown | 279 (30.2%) | 491 (24.5%) | 145 (14.9%) | 154 (33.5%) | 1069 (24.5%) |

¹Includes all Fulton County cities north of Atlanta metro (Alpharetta, Milton, Johns Creek, Roswell, Sandy Springs, Mountain Park) ²Includes all cities south of Atlanta (College Park, Chattahoochee Hills, East Point, Hapeville, Palmetto, South Fulton, Fairburn, Union City). **Note:** All data reported are preliminary and subject to change.

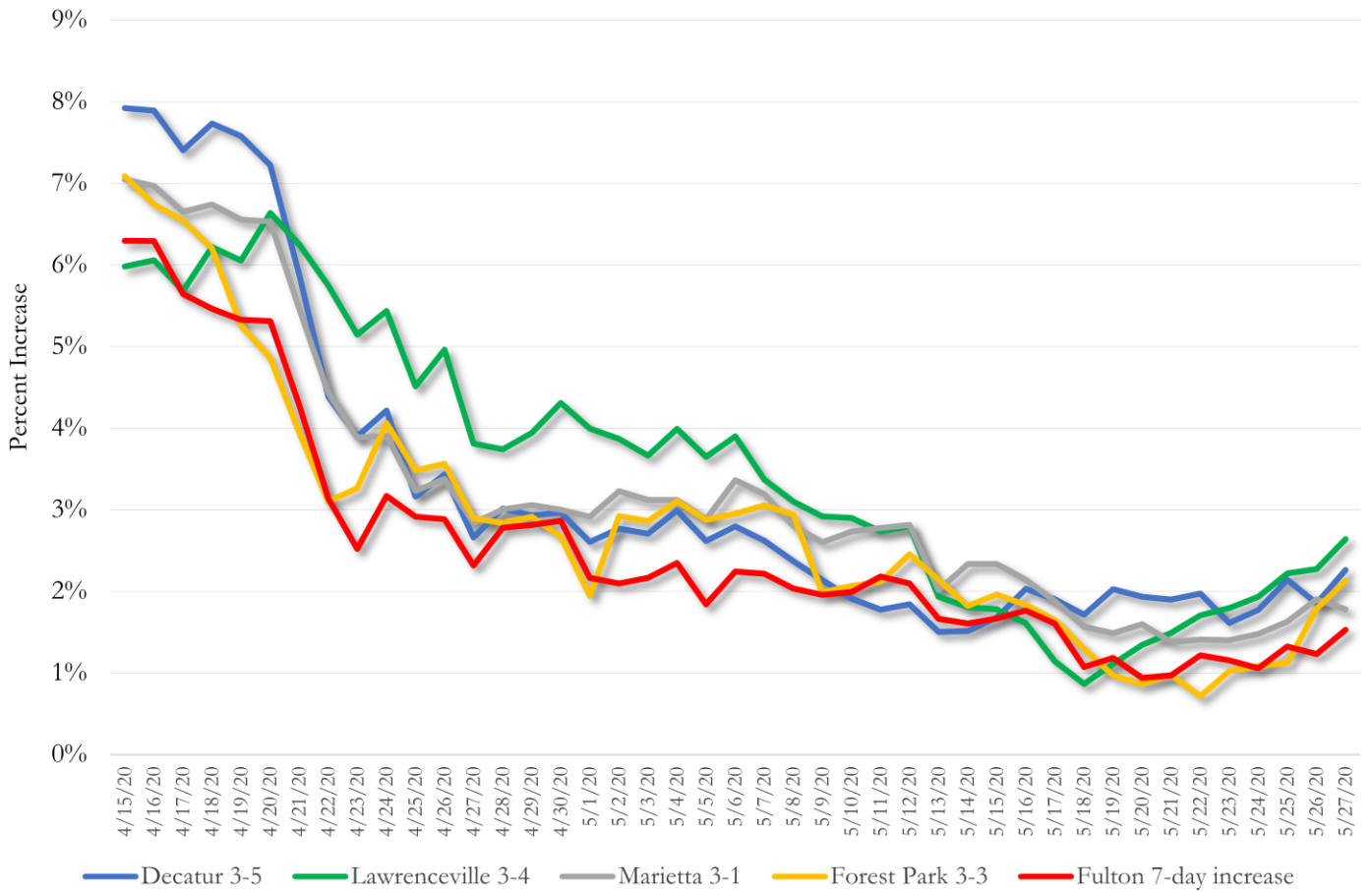
Distribution of COVID-19 Deaths in Fulton County by Fulton Region – 05/27/20

| | North Fulton Cities ¹ Count (%) | Atlanta Count (%) | South Fulton Cities ² Count (%) | Unknown City Count (%) | All Fulton Count (%) |
|------------------------------|---|----------------------|---|---------------------------|-------------------------|
| Total COVID-19 deaths | 29 | 98 | 66 | 18 | 211 |
| Gender: Female | <10 | 41 (41.8%) | 36 (54.5%) | 10 (55.6%) | 95 (45.0%) |
| Male | 21 (72.4%) | 57 (58.2%) | 30 (45.5%) | <10 | 116 (55.0%) |
| Unknown | 0 | 0 | 0 | 0 | 0 |
| Age: <65 | <10 | 17 (17.3%) | 18 (27.3%) | <10 | 43 (20.4%) |
| 65-74 | <10 | 21 (21.4%) | 17 (25.8%) | <10 | 43 (20.4%) |
| 75-84 | <10 | 29 (29.6%) | 13 (19.7%) | <10 | 56 (26.5%) |
| ≥85 | 10 (34.5%) | 31 (31.6%) | 18 (27.3%) | 10 (55.6%) | 69 (32.7%) |
| Unknown | 0 | 0 | 0 | 0 | 0 |
| Race: Asian, NH | 0 | <10 | 0 | 0 | <10 |
| Black, NH | <10 | 81 (82.7%) | 60 (90.9%) | 10 (55.6%) | 156 (73.9%) |
| White, NH | 21 (72.4%) | 12 (12.2%) | <10 | <10 | 45 (21.3%) |
| Hispanic | <10 | 0 | <10 | 0 | <10 |
| Other, NH | 0 | <10 | 0 | 0 | <10 |
| Unknown | 0 | <10 | 0 | 0 | <10 |

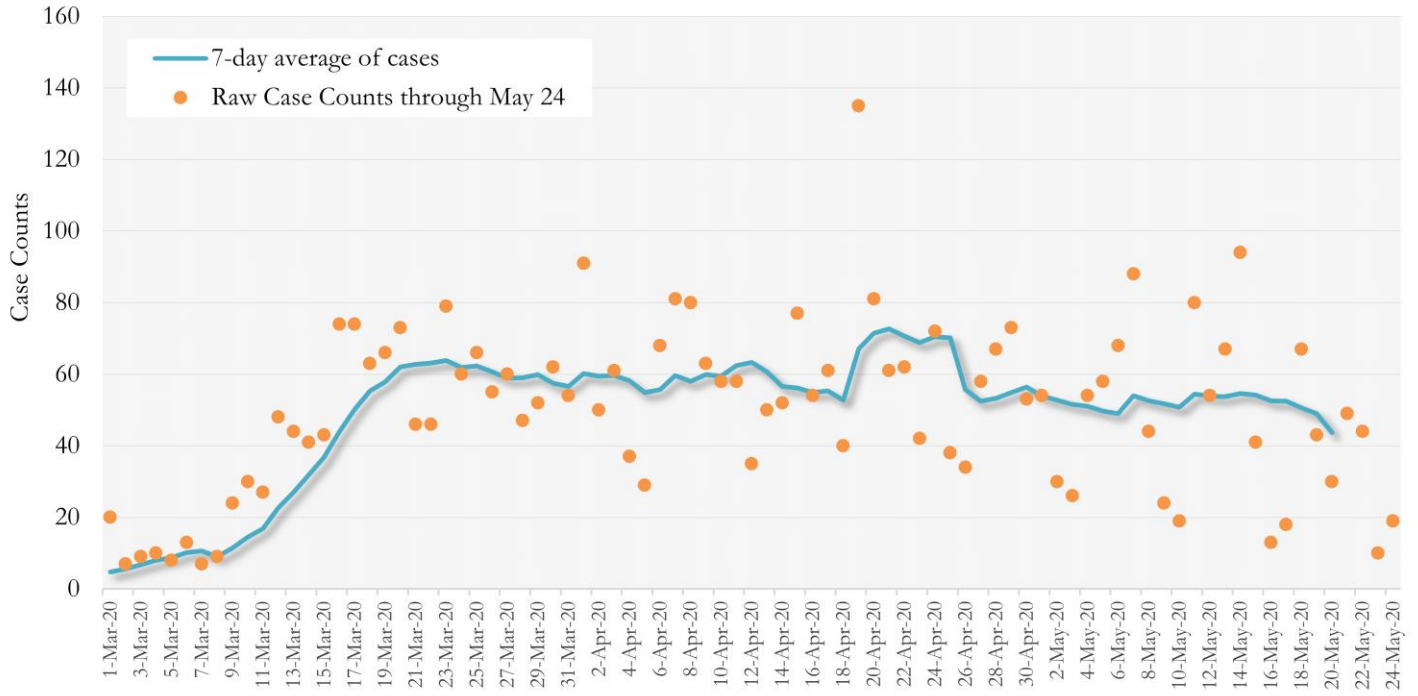
¹Includes all Fulton County cities north of Atlanta metro (Alpharetta, Milton, Johns Creek, Roswell, Sandy Springs, Mountain Park) ²Includes all cities south of Atlanta (College Park, Chattahoochee Hills, East Point, Hapeville, Palmetto, South Fulton, Fairburn, Union City). **Note:** All data reported are preliminary and subject to change.

MORBIDITY AND MORTALITY TRENDS

**Daily Percent Increase for Atlanta Metro Districts
(Averaged over 7 days)**

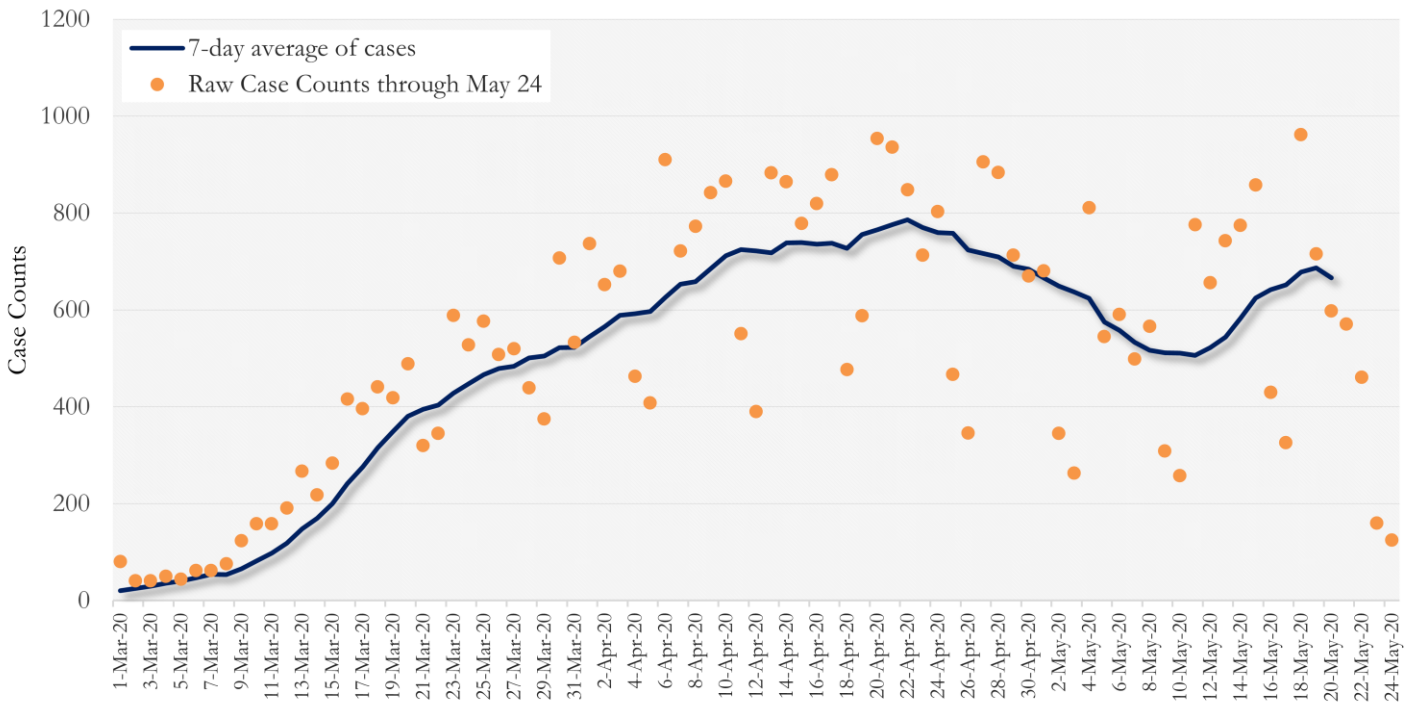


New COVID-19 Cases in Fulton County Daily (Averaged over 7 days) March 01, 2020 to May 20, 2020



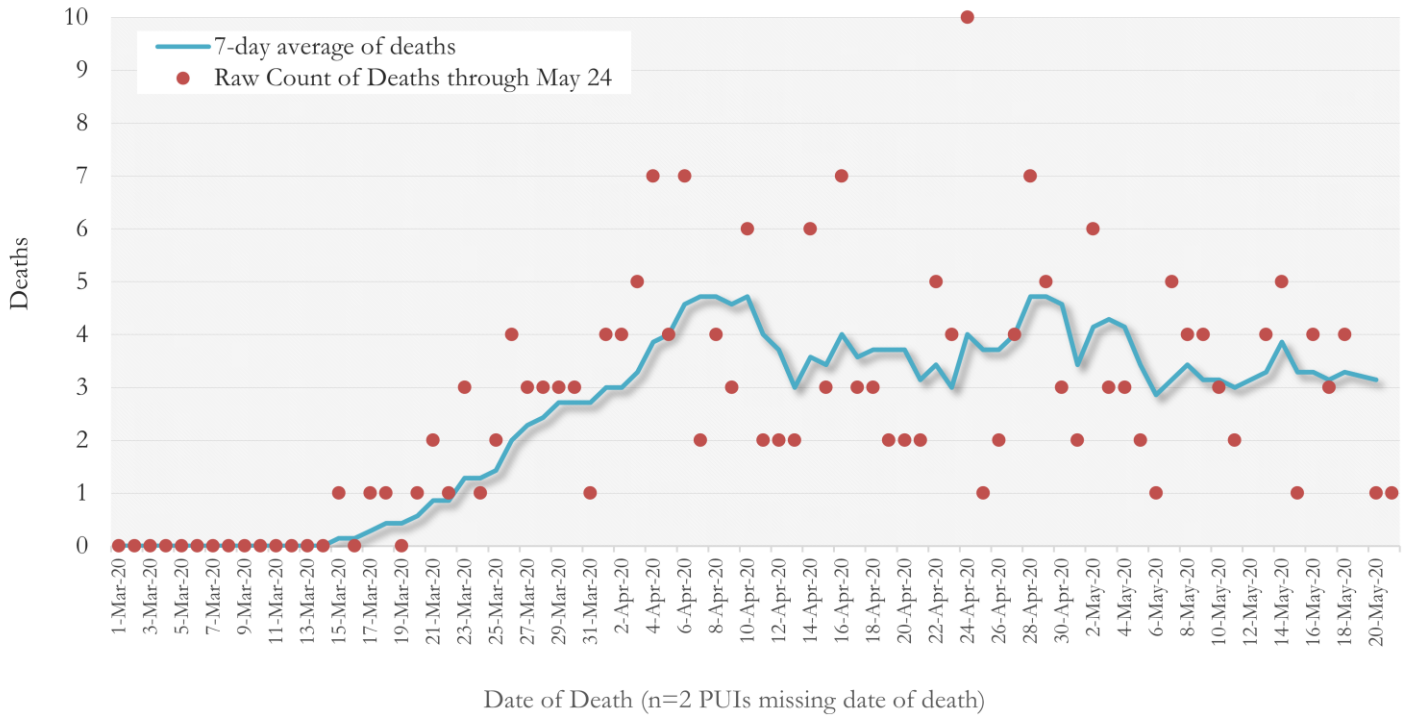
*Date is the earliest date when comparing the date of symptom onset, date of positive sample collection, and date of report for each PUI.

New COVID-19 Cases in Georgia Daily (Averaged over 7 days) March 01, 2020 to May 20, 2020



*Date is the earliest date when comparing the date of symptom onset, date of positive sample collection, and date of report for each PUI.

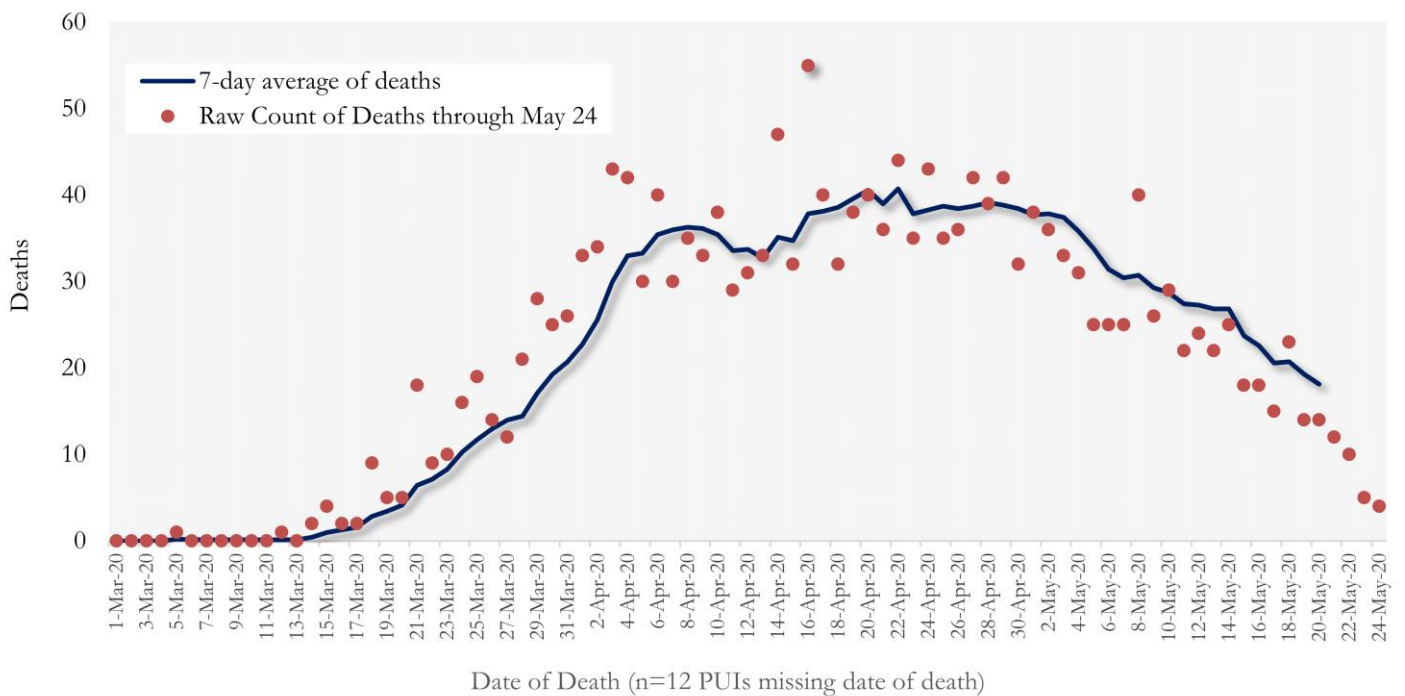
COVID-19 Deaths in Fulton County Daily (Averaged over 7 days) March 01, 2020 to May 20, 2020



Date of Death (n=2 PUIs missing date of death)

*There were no deaths reported in SENDSS prior to March 01, 2020.

COVID-19 Deaths in Georgia Daily (Averaged over 7 days) March 01, 2020 to May 20, 2020



Date of Death (n=12 PUIs missing date of death)

*There were no deaths reported in SENDSS prior to March 01, 2020.

COVID-19 IN LONG-TERM CARE FACILITIES IN FULTON

Older persons (aged 65 years and older) and persons who live in nursing homes or other long-term care facilities seem to be at higher risk for developing more serious complications from COVID-19. Extra precautions are recommended for individuals within this risk groups – Centers for Disease Control and Prevention (CDC 2020) <https://www.cdc.gov/coronavirus/2019-ncov/need-extra-precautions/people-at-higher-risk.html>

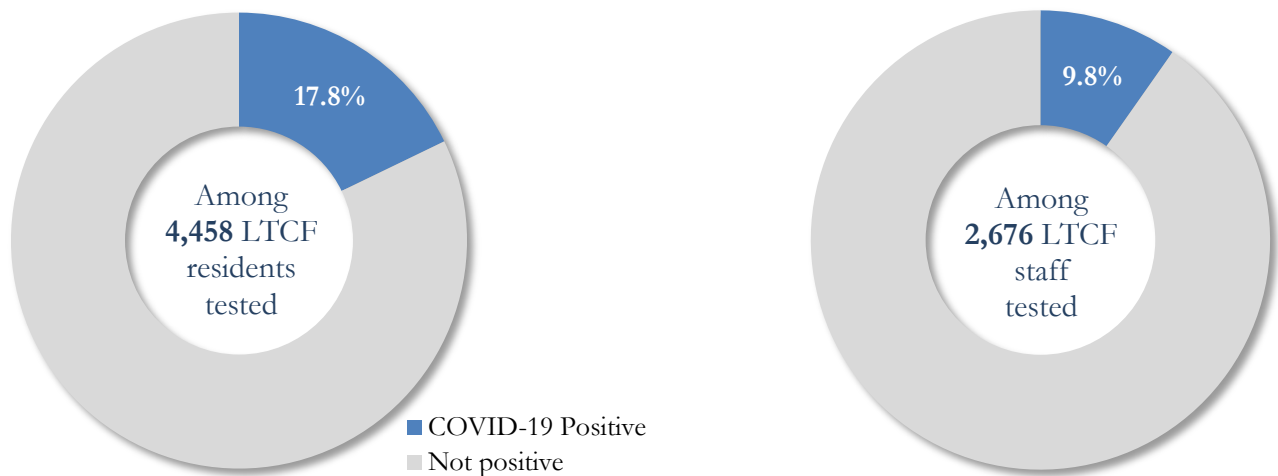
COVID-19 Diagnoses and Deaths in Fulton County Associated with Long-Term Care Facilities (5/27/20)



***LTCF → Long-term Care Facility (Includes residents and Staff) ***

COVID-19 POSITIVITY: COVID-19 testing is currently being provided at various long-term care facilities in Fulton County through the efforts of the Board of Health and the National Guard. See <https://dch.georgia.gov/> for a line listing of COVID-19 cases at all facilities in Georgia.

COVID-19 Positivity at 43 reporting Long-Term Care Facilities (LTCF) in Fulton County (5/27/20)



COVID-19 Cases, Hospitalizations, and Deaths among 43 reporting Long-Term Care Facilities in Fulton County (5/27/20)

| | LTCF Residents (n=4,458) | | | LTCF Staff (n=2,676) | | |
|--|--------------------------------|--------------------------------|-------------------------------|-------------------------------|------------------------------|-----------------------------|
| | Cases | Hospitalizations | Deaths | Cases | Hospitalizations | Deaths |
| Average (count per facility) ¹ | 19.9 | 4.5 | 3.0 | 7.7 | 0.7 | 0.1 |
| Median (count per facility) ¹ | 2.5 | 2.5 | 1.0 | 3.5 | 0 | 0 |
| Lowest counts | 0 | 0 | 0 | 0 | 0 | 0 |
| Highest counts | 126 | 20 | 17 | 40 | 6 | 1 |
| Total Count | 795 (17.8%)^a | 127 (16.0%)^b | 88 (11.1%)^b | 261 (9.8%)^a | 15 (5.7%)^b | 1 (0.4%)^b |

^a Percentage shown reflects proportion of total residents/staff tested who were positive (i.e. COVID-19 Positivity). | ^b Percentages shown are proportions of persons residents/staff diagnosed with COVID-19 who were hospitalized or died after diagnoses.