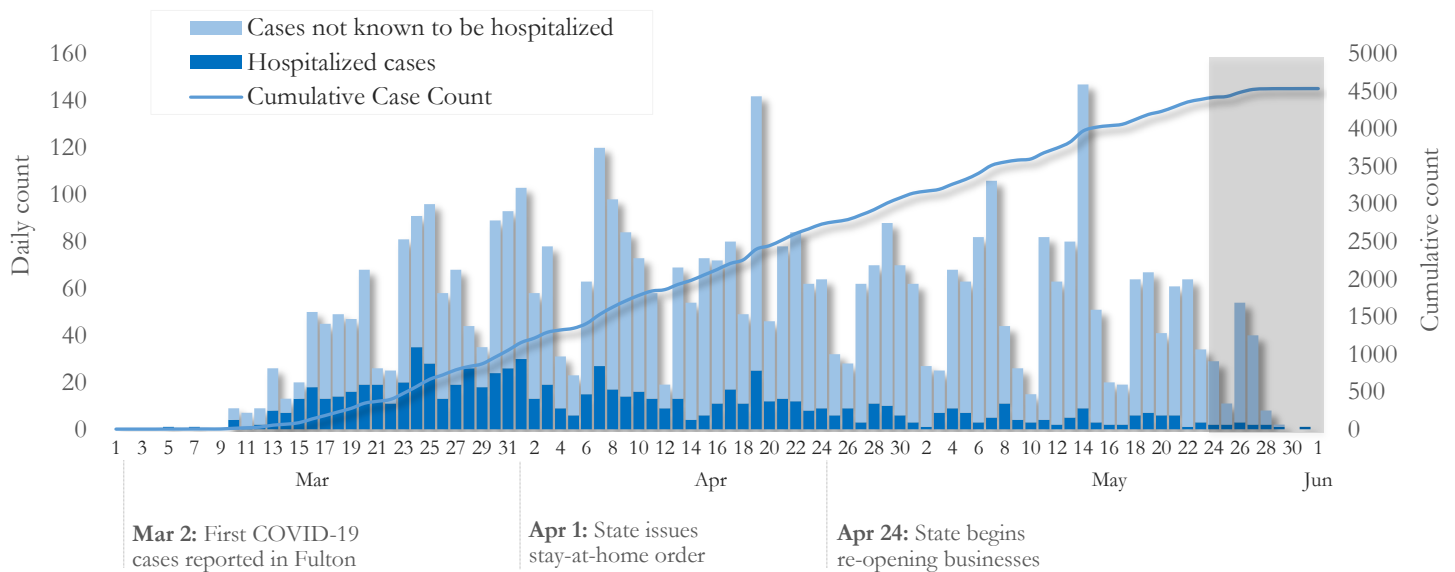


SUMMARY

- As of June 1, 2020, Fulton County has recorded **4,540** cases of the 2019 novel coronavirus (COVID-19) and **235** deaths.
- The central portion of the county (Atlanta metro) accounts for 47% of the cumulative case count while the northern and southern parts of the county together account for 44% of the COVID-19 cumulative case count in the county.
- By city, cumulative COVID-19 diagnoses rates range from 141.1 per 100,000 persons (Johns Creek) to 844.5 per 100,000 persons (Union City).
- Among all persons diagnosed with COVID-19 in Fulton County, 18.8% required hospitalization and 5.2% died.
- Residents and staff of long-term care facilities account for 24% of COVID-19 diagnoses and 44% of COVID-19 deaths in Fulton County.

Daily and Cumulative COVID-19 diagnoses in Fulton County, GA (6/01/20)



*Counts shown reflect the number of confirmed cases as of 9:00am on 6/01/20 using the date of first positive sample collection. Where date of sample collection was not available or missing, the date of report creation in GA SENDSS was used instead. **Note:** All data reported are preliminary and subject to change. Delays in data reporting may cause changes in data counts, particularly in the shaded portion.

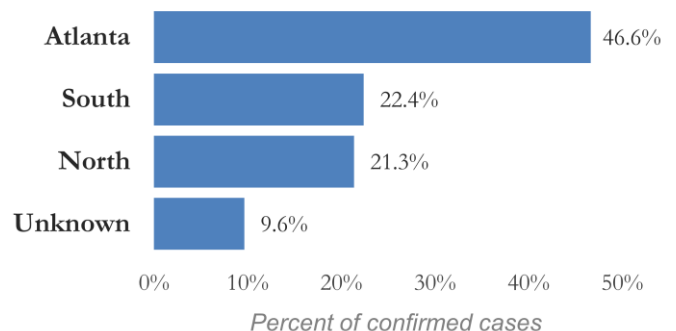
DISTRIBUTION OF COVID-19 DIAGNOSES BY REGION

New cases: 54% of the new COVID-19 cases diagnosed in the past 2 weeks occurred in Atlanta while 20% and 19% occurred in the Northern and Southern regions of the county respectively.

Fulton Region	% Cumulative count	% New cases*
Atlanta	46.6%	54.2%
North ¹	21.3%	20.4%
South ²	22.4%	19.1%
Unincorporated/Unknown	9.6%	6.3%

¹Includes all Fulton County cities north of Atlanta metro (Alpharetta, Milton, Johns Creek, Roswell, Sandy Springs, Mountain Park) | ²Includes all cities south of Atlanta (College Park, Chattahoochee Hills, East Point, Hapeville, Palmetto, South Fulton, Fairburn, and Union City) ***New cases:** Cases diagnosed in the past 2 weeks only (using the date of sample collection).

Distribution of COVID 19 cases by Region (6/01/20)

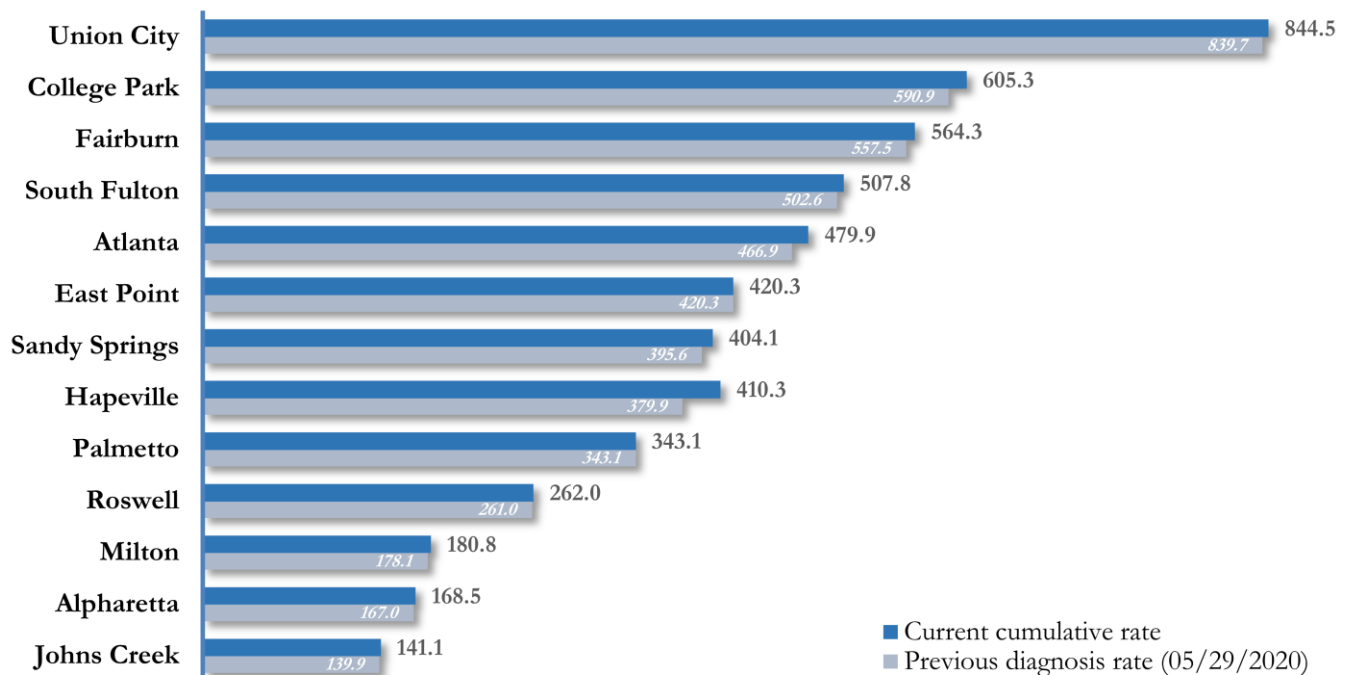


COVID-19 CASE COUNTS AND RATES BY CITY

	Prior Count (5/29/2020)	Current Count (6/01/20)	Percent (County Total)	% Change from prior Count	Cumulative Rate (Per 100,000 pop.)	New Cases Diagnosed in Past 14 Days ¹ (Count)
Atlanta	2060	2117	46.6%	2.8%	479.9	258
South Fulton	478	483	10.6%	1.0%	507.8	30
Sandy Springs	417	426	9.4%	2.2%	404.1	59
Roswell	246	247	5.4%	0.4%	262.0	18
East Point	147	147	3.2%	0.0%	420.3	16
Johns Creek	117	118	2.6%	0.9%	141.1	<10
Union City	176	177	3.9%	0.6%	844.5	20
Alpharetta	108	109	2.4%	0.9%	168.5	11
Milton	68	69	1.5%	1.5%	180.8	<10
Fairburn	82	83	1.8%	1.2%	564.3	<10
College Park	82	84	1.9%	2.4%	605.3	12
Palmetto	15	15	0.3%	0.0%	343.1	No new cases
Hapeville	25	27	0.6%	8.0%	410.3	<10
Mountain Park	0	0	0.0%	-	-	No new cases
Unknown	461	438	9.6%	-	-	-

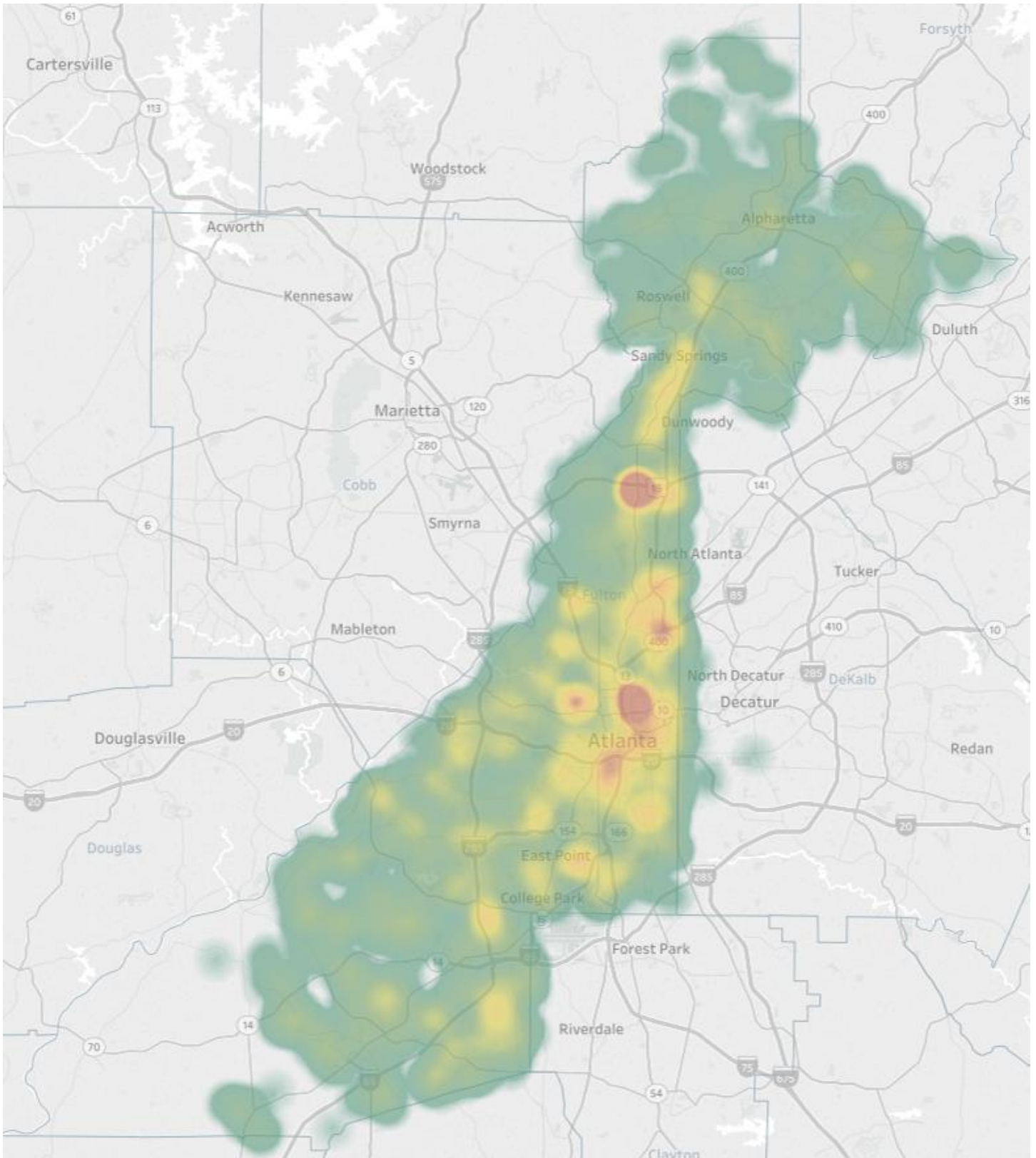
Population estimates from US Census Bureau used to calculate diagnoses rates. ** Data cleaning (either during case interviews or address geo-coding) may lead to reassignment of few cases from one territory to another based on their corrected addresses. These may appear as “decreases” when compared to the previous day’s count. These do not reflect errors in the data collection or analysis process but only reflect the minor day-to-day fluctuations in case counts that arise in an evolving public health database like COVID’s. **Note:** Sharp increases in territorial COVID case counts often reflect new cases diagnosed at long term care facilities located in those territories during facility-wide /mass screening events. ¹**New cases:** Cases diagnosed in the past 2 weeks only (using the date of sample collection). **All data reported are preliminary and subject to change.**

Fig. 3. COVID-19 Diagnoses Rate in Fulton County by City (6/01/20)



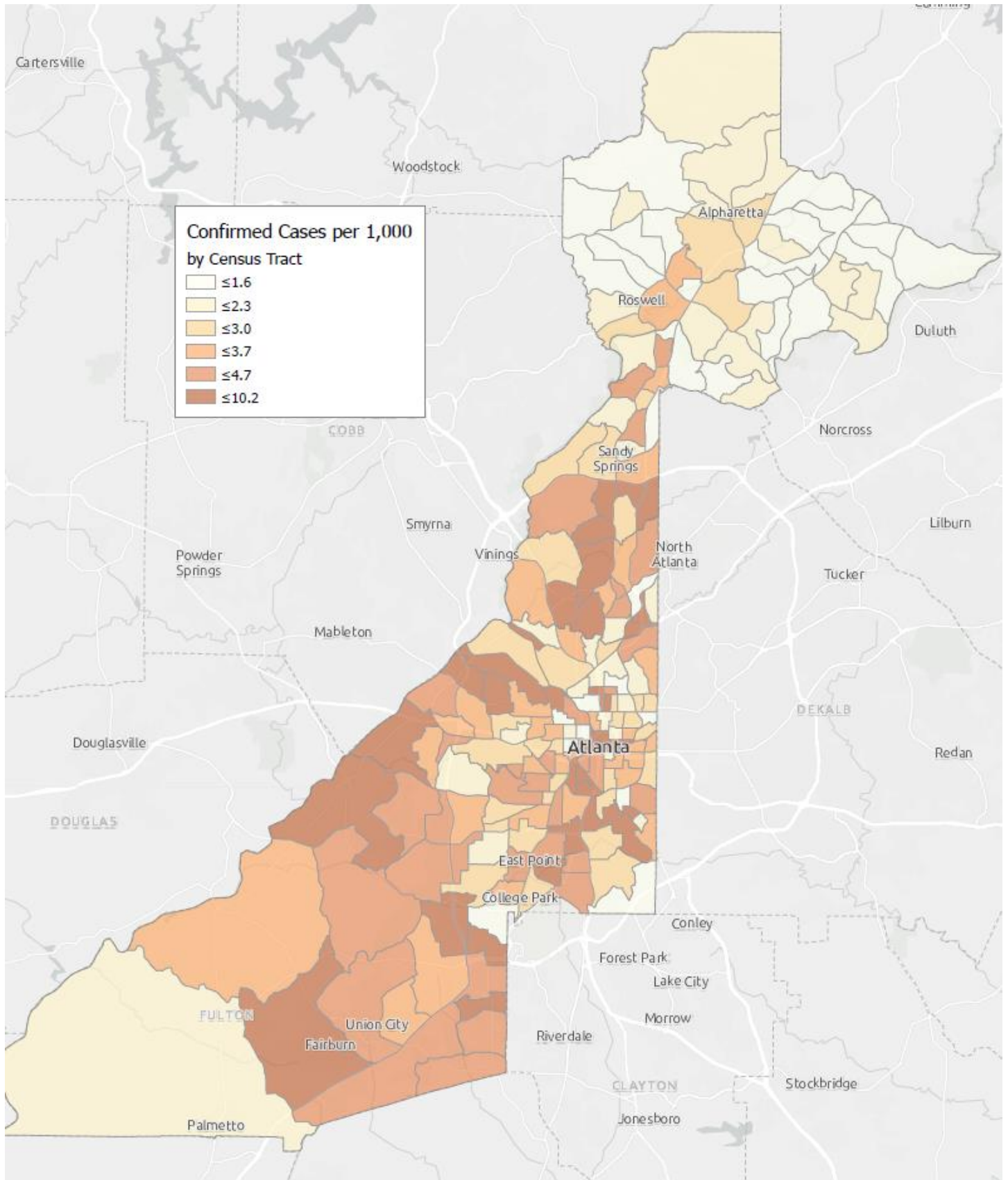
*Rates shown are per 100,000 persons | **Note:** Mass testing in specific locations (e.g. long term care facilities) may cause sharp increases in the cumulative rate of COVID-19 diagnosis in those territories. All data shown are preliminary and are subject to change as testing results get updated.

Fig. 4. Density Map of COVID-19 Cases in Fulton County (6/01/20)



NB. Data used excludes the outbreak-related cases diagnosed at long-term care facilities and reflects the current geographical distribution of COVID19 diagnoses in the general Fulton County community.

Fig. 5. COVI-19 Diagnosis Rates in Fulton County by Census Tract (6/01/2020)



*Rates shown are per 1,000 populations.

NB. Data used excludes the outbreak-related cases diagnosed at long-term care facilities and reflects the current geographical distribution of COVID19 diagnoses in

COVID-19 CASE COUNTS BY ZIP CODE

ZIP code	Prior Count (5/29/2020)	Current Count (6/01/20)	Percent (County Total)	% Change from Prior ZIP-level Count	New Cases Diagnosed in Past 14 Days ¹ (Count)
30331	355	357	7.9%	0.6%	20
30318	261	288	6.3%	10.3%	59
30349	255	260	5.7%	2.0%	20
30213	186	187	4.1%	0.5%	15
30315	146	147	3.2%	0.7%	<10
30344	141	142	3.1%	0.7%	16
30311	129	129	2.8%	0.0%	<10
30342	217	225	5.0%	3.7%	37
30314	170	182	4.0%	7.1%	22
30310	152	162	3.6%	6.6%	44
30308	80	80	1.8%	0.0%	No new cases
30022	103	105	2.3%	1.9%	11
30327	107	109	2.4%	1.9%	24
30004	95	95	2.1%	0.0%	<10
30309	138	137	3.0%	-0.7%**	<10
30076	90	93	2.0%	3.3%	<10
30291	200	202	4.4%	1.0%	22
30350	92	95	2.1%	3.3%	11
30075	138	140	3.1%	1.4%	<10
30328	103	104	2.3%	1.0%	11
30316	43	42	0.9%	-2.3%**	<10
30312	218	217	4.8%	-0.5%	<10
30005	47	47	1.0%	0.0%	<10
30305	106	111	2.4%	4.7%	24
30306	45	43	0.9%	-4.4%**	<10
30324	111	111	2.4%	0.0%	19
30337	76	77	1.7%	1.3%	11
30009	48	48	1.1%	0.0%	<10
30313	38	38	0.8%	0.0%	No new cases
30326	29	28	0.6%	-3.4%**	<10
30097	40	40	0.9%	0.0%	<10
30354	43	47	1.0%	9.3%	<10
30303	31	31	0.7%	0.0%	<10
30339	12	13	0.3%	8.3%	No new cases
30268	21	20	0.4%	-4.8%**	No new cases
30307	18	18	0.4%	0.0%	<10
30319	28	26	0.6%	-7.1%**	<10
30336	17	17	0.4%	0.0%	<10
30296	10	10	0.2%	0.0%	No new cases
30363	<10	<10	0.2%	-	No new cases
30301	<10	<10	<0.1%	-	No new cases
30345	13	<10	0.2%	-46.2%**	No new cases
31131	<10	<10	<0.1%	-	No new cases
30023	<10	<10	<0.1%	-	<10
30080	<10	<10	<0.1%	-	No new cases
30135	<10	<10	<0.1%	-	No new cases
30138	<10	<10	<0.1%	-	No new cases
30139	<10	<10	<0.1%	-	No new cases
30321	<10	<10	<0.1%	-	No new cases
30340	<10	<10	0.2%	-	<10
30341	17	11	0.2%	-35.3%**	<10
30358	<10	<10	<0.1%	-	No new cases

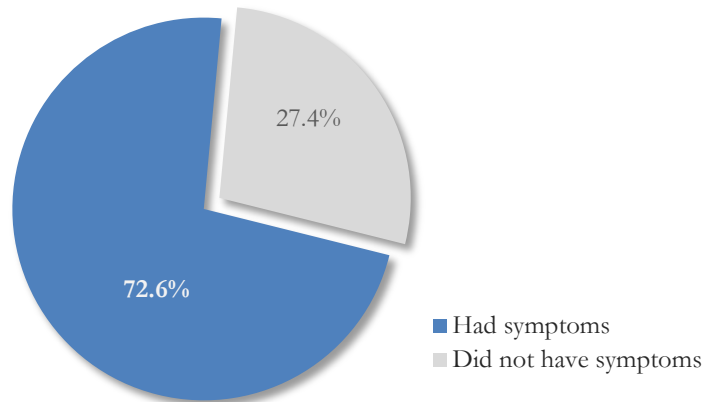
30374	18	18	0.4%	0.0%	No new cases
30606	<10	<10	<0.1%	-	No new cases
31150	<10	<10	<0.1%	-	No new cases
30024	<10	<10	<0.1%	-	No new cases
30098	<10	<10	<0.1%	-	No new cases
30334	<10	<10	<0.1%	-	No new cases
30338	<10	<10	<0.1%	-	<10
Unknown	264	245	5.4%	-	-

**** Data cleaning (either during case interviews or address geo-coding) may lead to reassignment of few cases from one territory to another based on their corrected addresses. These may appear as "decreases" when compared to the previous day's count. These do not reflect errors in the data collection or analysis process but only reflect the minor day-to-day fluctuations in case counts that arise in an evolving public health database like COVID's. Note: Sharp increases in territorial COVID case counts often reflect new cases diagnosed at long term care facilities located in those territories during facility-wide/mass screening events. ¹New cases: Cases diagnosed in the past 2 weeks only (using the date of sample collection). All data reported are preliminary and subject to change.**

REPORTING SYMPTOMS AMONG PERSONS DIAGNOSED WITH COVID-19 IN FULTON

People with COVID-19 have reported a wide range of symptoms ranging from mild symptoms to severe illness. Symptoms may appear 2-14 days after exposure to the virus. Symptoms reported include: cough, shortness of breath/difficulty breathing, fever, chills, repeated shaking with chills, muscle pain, headache, sore throat, new loss of taste or smell – Centers for Disease Control and Prevention (CDC)
<https://www.cdc.gov/coronavirus/2019-ncov/symptoms-testing/symptoms.html>

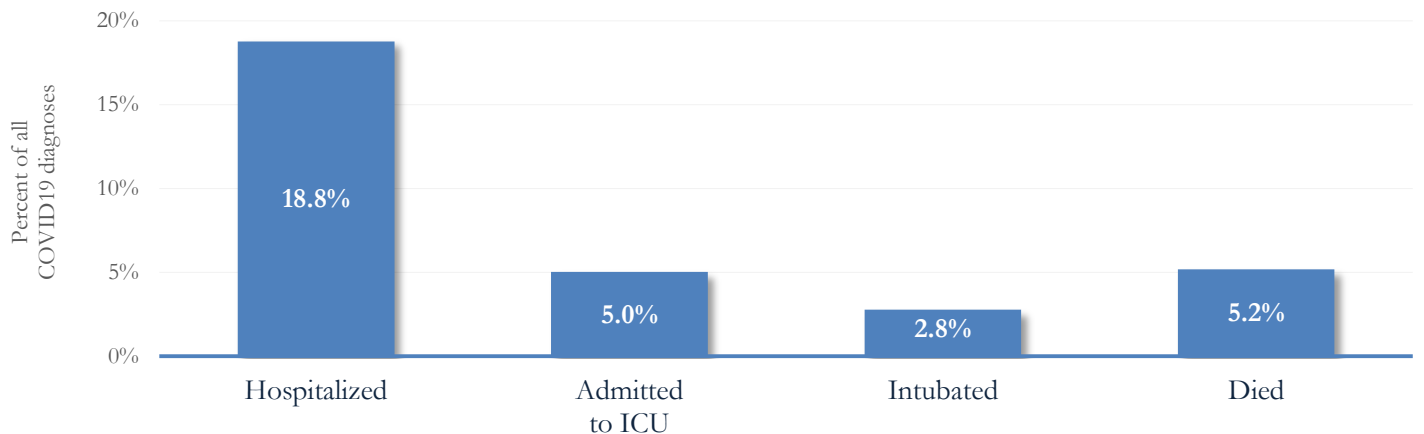
Fig. 6. Proportion reporting Symptoms in Fulton County (6/01/20)



COVID-19 cases who have been case interviewed or had medical charts reviewed as at 6/01/20 only

COVID-19 HOSPITALIZATIONS, ICU ADMISSIONS AND DEATHS IN FULTON

Fig. 7. Hospitalizations, ICU Admissions and Deaths among COVID-19 Diagnoses in Fulton County (6/01/20)



DEMOGRAPHIC DISTRIBUTIONS – COVID 19 DIAGNOSES AND DEATHS IN FULTON

Distribution of COVID-19 diagnoses in Fulton County by Fulton Region – 06/01/20

	North Fulton Cities ¹ Count (%)	Atlanta Count (%)	South Fulton Cities ² Count (%)	Unknown City Count (%)	All Fulton Count (%)
Total COVID-19 cases	969	2117	1016	438	4540
Gender: Female	467 (48.2%)	1033 (48.8%)	579 (57.0%)	236 (53.9%)	2315 (51.0%)
Male	493 (50.9%)	1052 (49.7%)	424 (41.7%)	193 (44.1%)	2162 (47.6%)
Unknown	<10	32 (1.5%)	13 (1.3%)	<10	63 (1.4%)
Age: <15	22 (2.3%)	19 (0.9%)	<10	<10	59 (1.3%)
15-24	98 (10.1%)	129 (6.1%)	52 (5.1%)	26 (5.9%)	305 (6.7%)
25-34	140 (14.4%)	326 (15.4%)	107 (10.5%)	84 (19.2%)	657 (14.5%)
35-44	167 (17.2%)	314 (14.8%)	152 (15.0%)	69 (15.8%)	702 (15.5%)
45-54	179 (18.5%)	302 (14.3%)	185 (18.2%)	72 (16.4%)	738 (16.3%)
55-64	161 (16.6%)	326 (15.4%)	188 (18.5%)	61 (13.9%)	736 (16.2%)
65-74	100 (10.3%)	327 (15.4%)	152 (15.0%)	34 (7.8%)	613 (13.5%)
≥75	100 (10.3%)	357 (16.9%)	168 (16.5%)	78 (17.8%)	703 (15.5%)
Unknown	<10	17 (0.8%)	<10	<10	27 (0.6%)
Race: Asian, NH	46 (4.7%)	21 (1.0%)	<10	11 (2.5%)	79 (1.7%)
Black, NH	134 (13.8%)	1121 (53.0%)	723 (71.2%)	172 (39.3%)	2150 (47.4%)
White, NH	337 (34.8%)	333 (15.7%)	73 (7.2%)	76 (17.4%)	819 (18.0%)
Hispanic	135 (13.9%)	68 (3.2%)	35 (3.4%)	35 (8.0%)	273 (6.0%)
Other, NH	29 (3.0%)	38 (1.8%)	14 (1.4%)	12 (2.7%)	93 (2.0%)
Unknown	288 (29.7%)	536 (25.3%)	170 (16.7%)	132 (30.1%)	1126 (24.8%)

¹Includes all Fulton County cities north of Atlanta metro (Alpharetta, Milton, Johns Creek, Roswell, Sandy Springs, Mountain Park) ²Includes all cities south of Atlanta (College Park, Chattahoochee Hills, East Point, Hapeville, Palmetto, South Fulton, Fairburn, Union City). **Note:** All data reported are preliminary and subject to change.

Distribution of COVID-19 Deaths in Fulton County by Fulton Region – 06/01/20

	North Fulton Cities ¹ Count (%)	Atlanta Count (%)	South Fulton Cities ² Count (%)	Unknown City Count (%)	All Fulton Count (%)
Total COVID-19 deaths	29	109	75	22	235
Gender: Female	<10	44 (40.4%)	41 (54.7%)	14 (63.6%)	106 (45.1%)
Male	22 (75.9%)	65 (59.6%)	34 (45.3%)	<10	129 (54.9%)
Unknown	0	0	0	0	0
Age: <65	<10	18 (16.5%)	21 (28.0%)	<10	46 (19.6%)
65-74	<10	27 (24.8%)	19 (25.3%)	<10	51 (21.7%)
75-84	<10	29 (26.6%)	15 (20.0%)	<10	58 (24.7%)
≥85	12 (41.4%)	35 (32.1%)	20 (26.7%)	13 (59.1%)	80 (34.0%)
Unknown	0	0	0	0	0
Race: Asian, NH	0	<10	0	0	<10
Black, NH	<10	93 (85.3%)	66 (88.0%)	11 (50.0%)	176 (74.9%)
White, NH	21 (72.4%)	13 (11.9%)	<10	11 (50.0%)	52 (22.1%)
Hispanic	<10	0	<10	0	<10
Other, NH	0	<10	0	0	<10
Unknown	0	0	0	0	0

¹Includes all Fulton County cities north of Atlanta metro (Alpharetta, Milton, Johns Creek, Roswell, Sandy Springs, Mountain Park) ²Includes all cities south of Atlanta (College Park, Chattahoochee Hills, East Point, Hapeville, Palmetto, South Fulton, Fairburn, Union City). **Note:** All data reported are preliminary and subject to change.

MORBIDITY AND MORTALITY TRENDS

Fig. 8. Daily Percent Increase for Atlanta Metro Districts
(Averaged over 7 days)

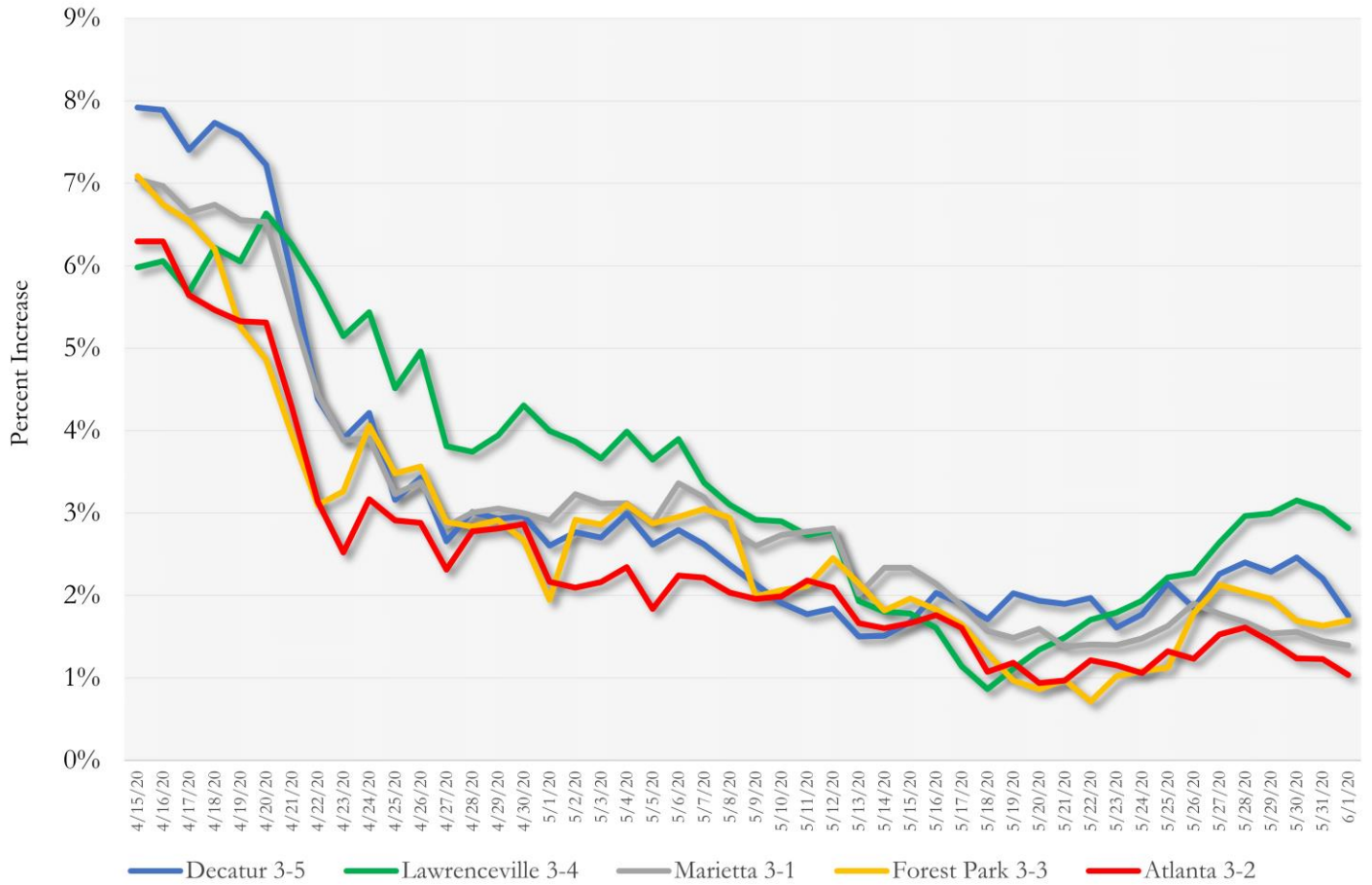
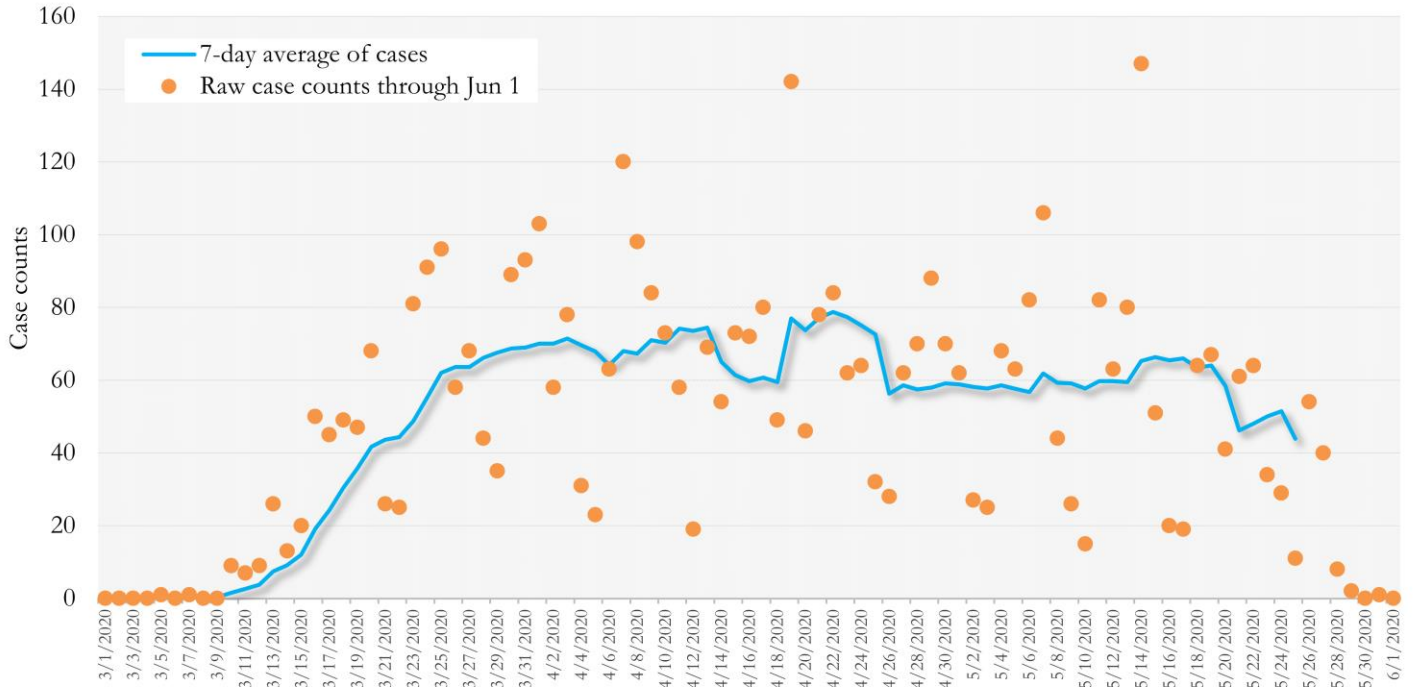
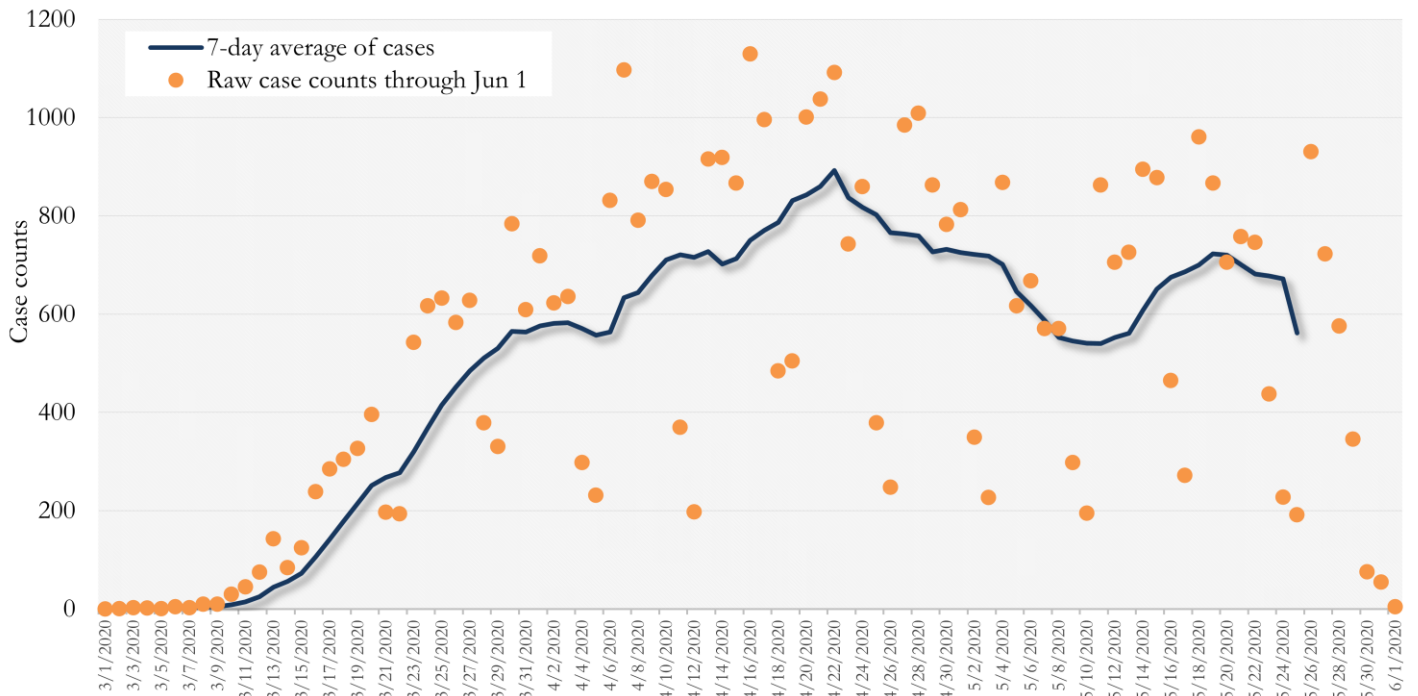


Fig 9. New COVID-19 Cases in Fulton County Daily (Averaged over 7 days)
 March 01, 2020 - May 25, 2020



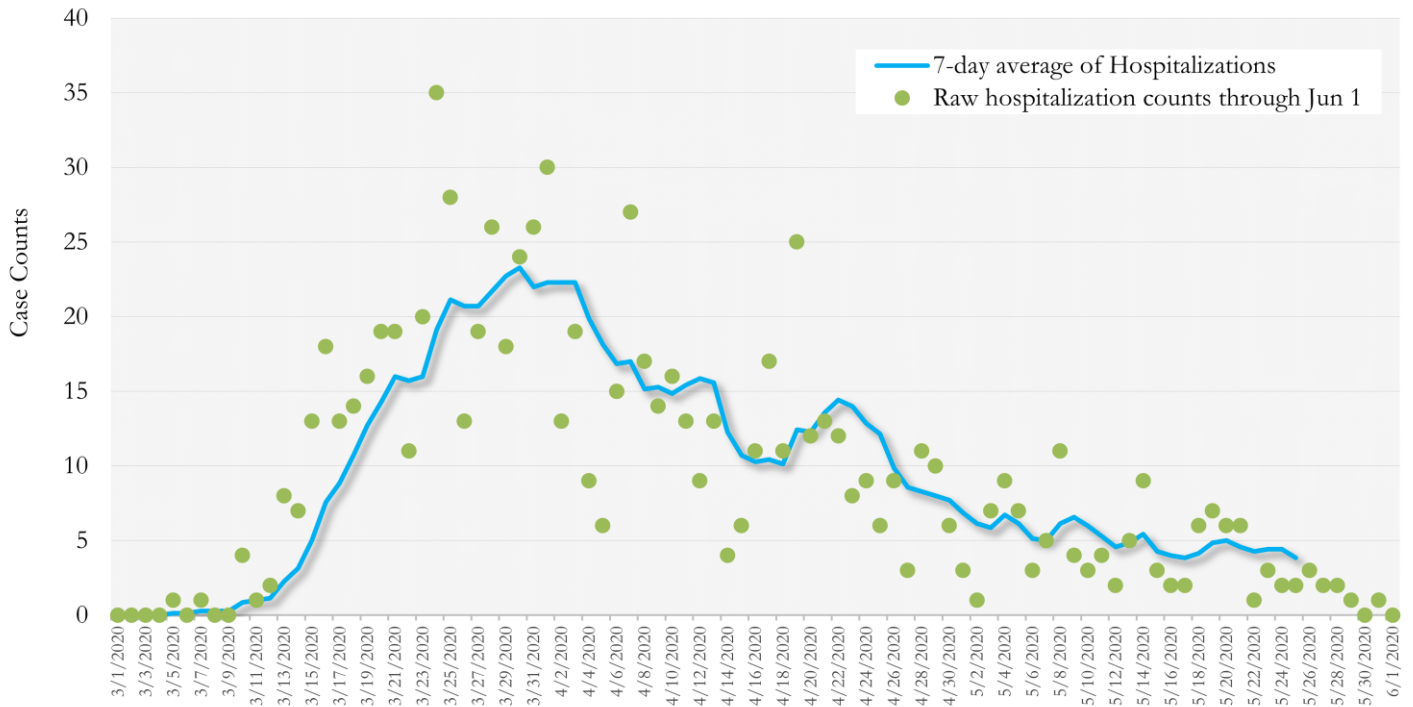
*Date of collection of first positive sample used (report creation date used where sample collection date is missing).

Fig 10. New COVID-19 Cases in Georgia State Daily (Averaged over 7 days)
 March 01, 2020 - May 25, 2020



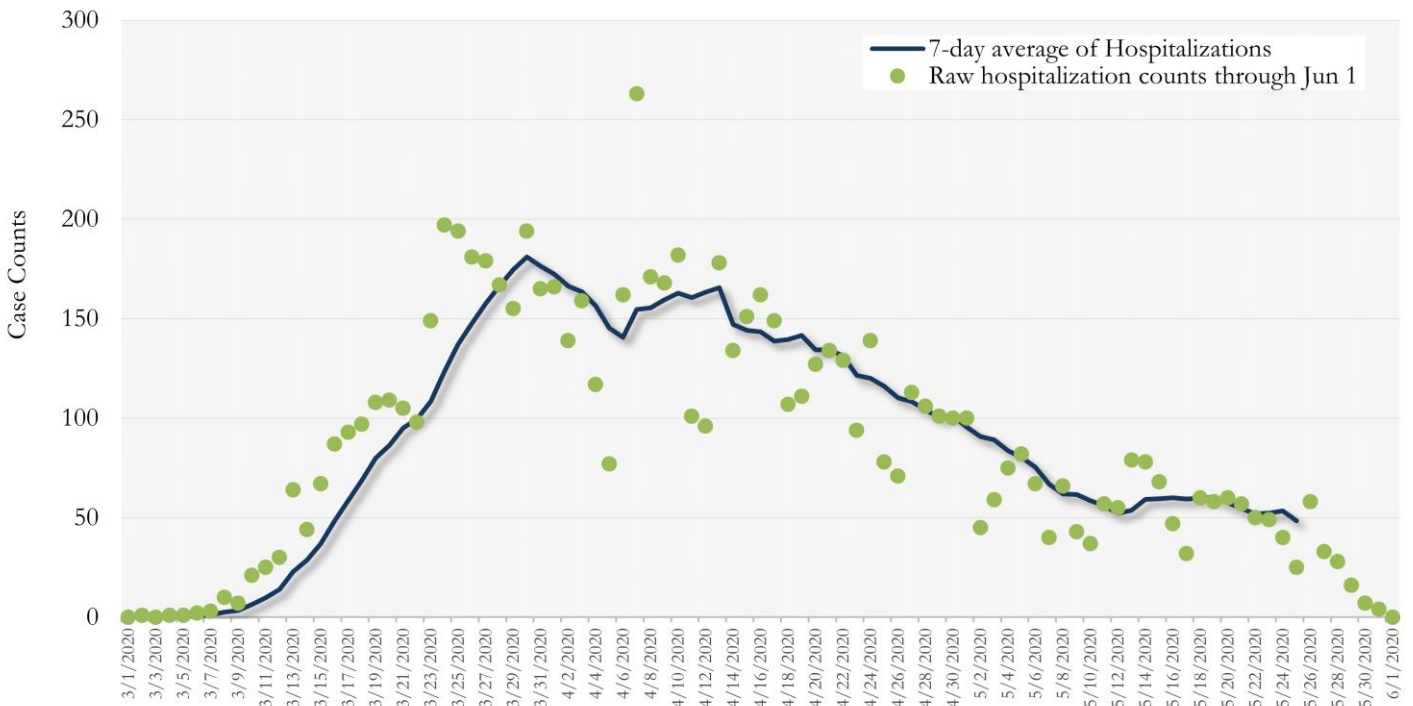
*Date of collection of first positive sample used (report creation date used where sample collection date is missing).

Fig 11. COVID-19 Hospitalizations in Fulton County Daily (Averaged over 7 days)
March 01, 2020 - May 25, 2020



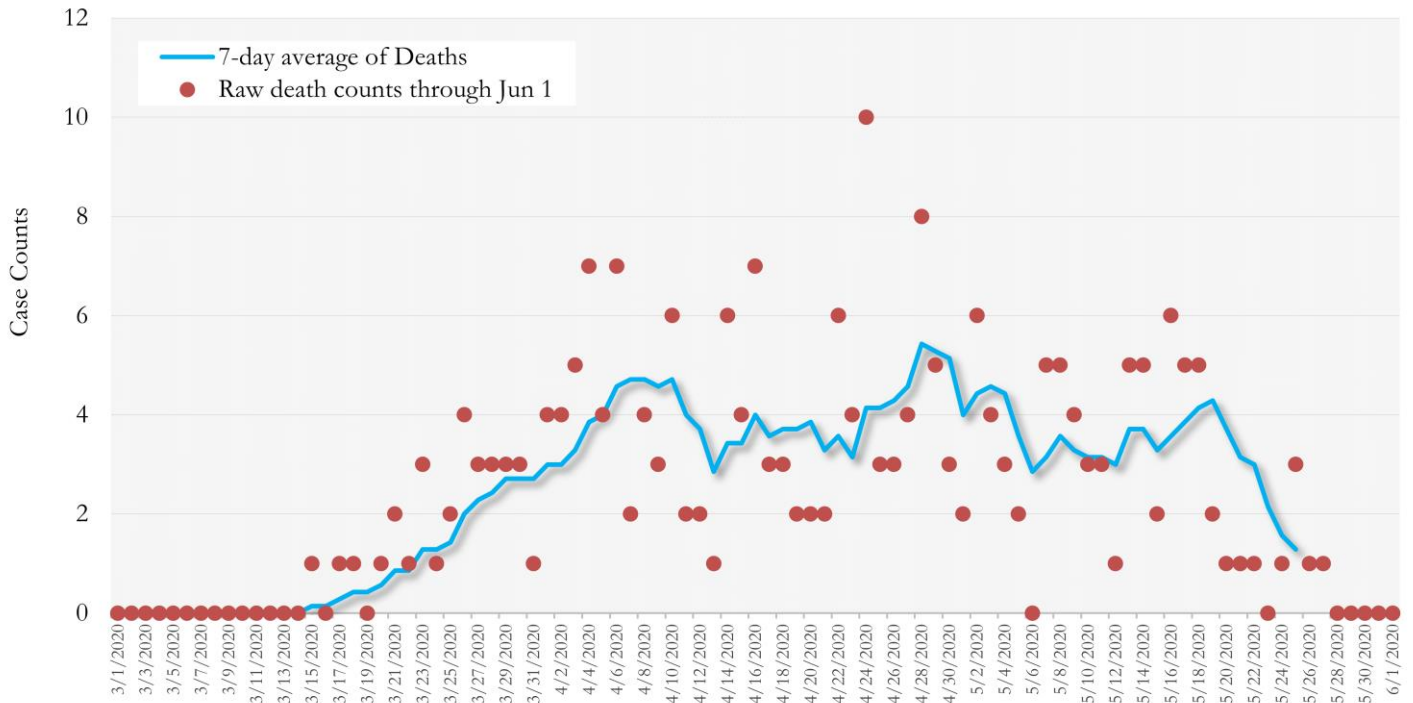
*Date of collection of first positive sample used (report creation date used where sample collection date is missing).

Fig 12. COVID-19 Hospitalizations in Georgia State Daily (Averaged over 7 days)
March 01, 2020 - May 25, 2020



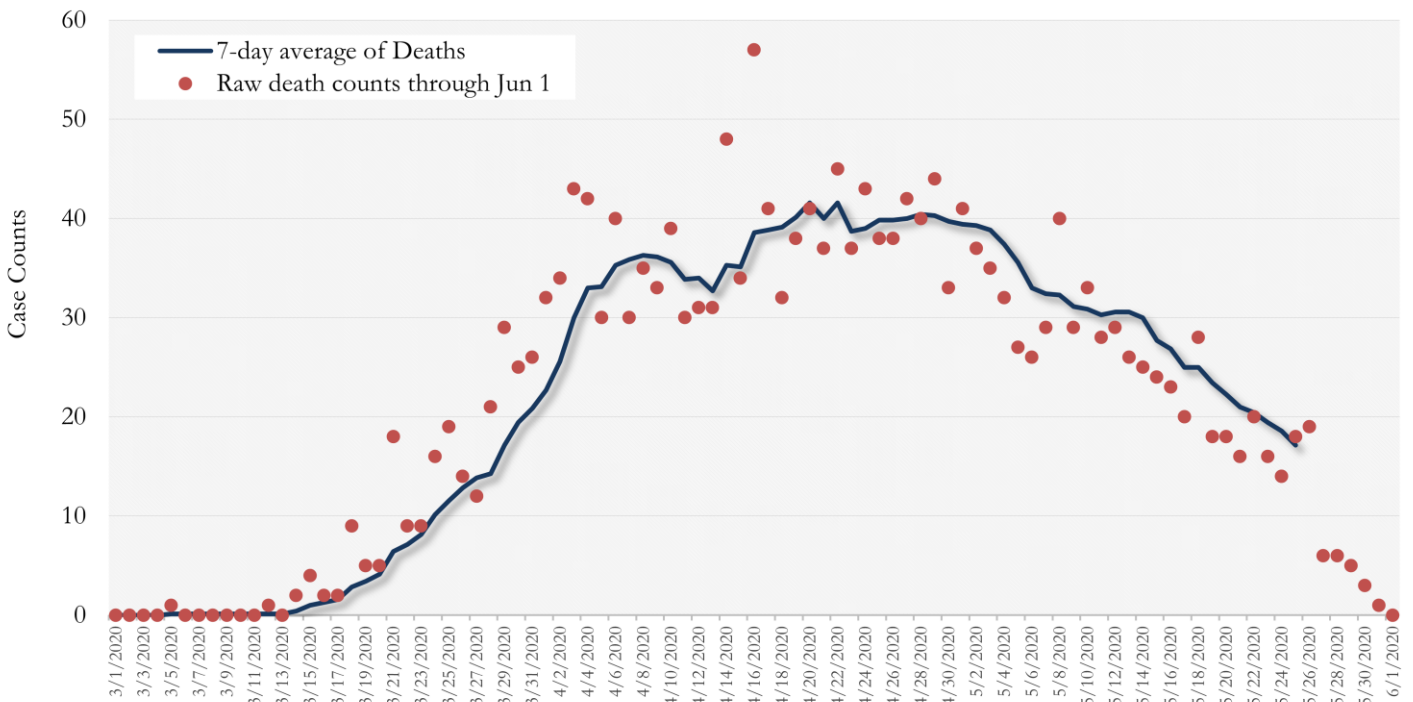
*Date of collection of first positive sample used (report creation date used where sample collection date is missing).

Fig. 13. COVID-19 Deaths in Fulton County Daily (Averaged over 7 days)
 March 01, 2020 - May 25, 2020



*Reported date of death used.

Fig. 14. COVID-19 Deaths in Fulton County Daily (Averaged over 7 days)
 March 01, 2020 - May 25, 2020

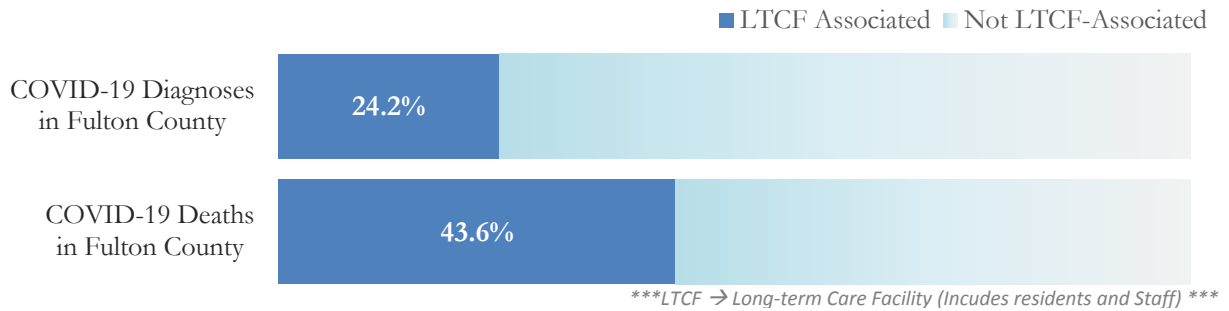


* Reported date of death used.

COVID-19 IN LONG-TERM CARE FACILITIES IN FULTON

Older persons (aged 65 years and older) and persons who live in nursing homes or other long-term care facilities seem to be at higher risk for developing more serious complications from COVID-19. Extra precautions are recommended for individuals within this risk groups – Centers for Disease Control and Prevention (CDC 2020) <https://www.cdc.gov/coronavirus/2019-ncov/need-extra-precautions/people-at-higher-risk.html>

COVID-19 Diagnoses and Deaths in Fulton County Associated with Long-Term Care Facilities (6/01/20)



COVID-19 POSITIVITY: COVID-19 testing is currently being provided at various long-term care facilities in Fulton County through the efforts of the Board of Health and the National Guard. See <https://dch.georgia.gov/> for a line listing of COVID-19 cases at all facilities in Georgia.

COVID-19 Positivity at 42 reporting Long-Term Care Facilities (LTCF) in Fulton County (6/01/20)



COVID-19 Cases, Hospitalizations, and Deaths among reporting Long-Term Care Facilities in Fulton County (6/01/20)

	LTCF Residents (n=4,653)			LTCF Staff (n=3,457)		
	Cases	Hospitalizations	Deaths	Cases	Hospitalizations	Deaths
Average (count per facility) ¹	20	4	2	7	<1	<0.1
Median (count per facility) ¹	3	3	1	4	0	0
Lowest counts	0	0	0	0	0	0
Highest counts	126	30	17	40	6	1
Total Count	824 (17.7%)^a	150 (18.2%)^b	91 (11.0%)^b	275 (8.0%)^a	16 (5.8%)^b	1 (0.4%)^b

^a Percentage shown reflects proportion of total residents/staff tested who were positive (i.e. COVID-19 Positivity). | ^b Percentages shown are proportions of persons residents/staff diagnosed with COVID-19 who were hospitalized or died after diagnoses.