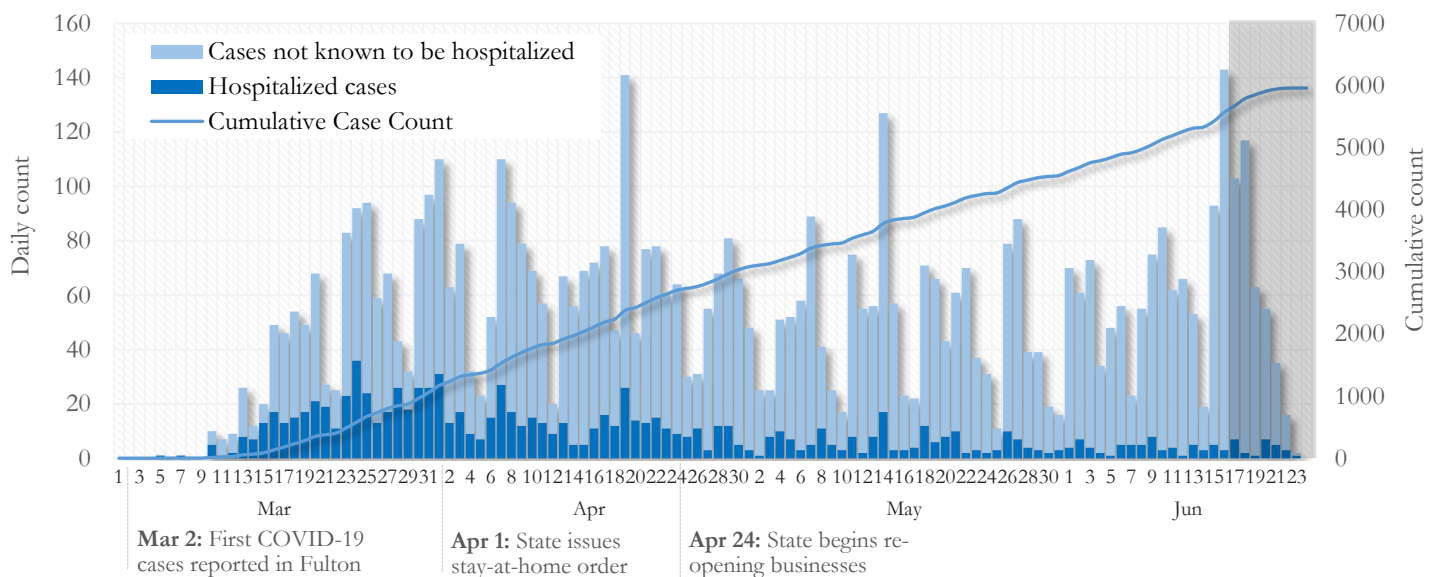


## SUMMARY

- As of June 24, 2020, Fulton has recorded **5,959** cases of the 2019 novel coronavirus (COVID-19) and **301** deaths.
- The central portion of the county (Atlanta metro) accounts for 46% of the cumulative case count while the northern and southern parts of the county together account for 45% of the COVID-19 cumulative case count in the county.
- By city, cumulative COVID-19 diagnoses rates range from 196.1 per 100,000 persons (Johns Creek) to 1063.7 per 100,000 persons (Hapeville).
- Among all persons diagnosed with COVID-19 in Fulton County, 17% required hospitalization and 5.1% died.
- Residents and staff of long-term care facilities account for 20% of COVID-19 diagnoses and 49% of COVID-19 deaths in Fulton County (6/24/20).

## Daily and Cumulative COVID-19 diagnoses in Fulton County, GA (6/24/20)



\*Counts shown reflect the number of confirmed cases as of 9:00am on 6/24/20 using the date of first positive sample collection. Where date of sample collection was not available or missing, the date of report creation in GA SENDSS was used instead. **Note:** All data reported are preliminary and subject to change. Delays in data reporting may cause changes in data counts, particularly in the shaded portion.

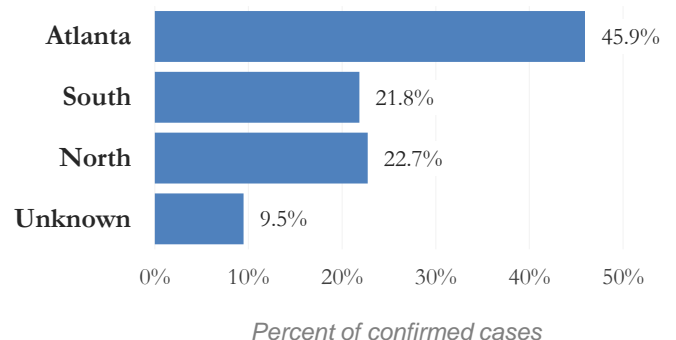
## DISTRIBUTION OF COVID-19 DIAGNOSES BY REGION

**New cases:** 44% of the new COVID-19 cases diagnosed in the past 2 weeks occurred in Atlanta while 31% and 17% occurred in the Northern and Southern regions of the county respectively.

Fulton Region	% Cumulative count	% New cases*
Atlanta	45.9%	44.2%
North <sup>1</sup>	22.7%	31.3%
South <sup>2</sup>	21.8%	16.8%
Unincorporated/Unknown	9.5%	7.7%

<sup>1</sup>Includes all Fulton County cities north of Atlanta metro (Alpharetta, Milton, Johns Creek, Roswell, Sandy Springs, Mountain Park) | <sup>2</sup>Includes all cities south of Atlanta (College Park, Chattahoochee Hills, East Point, Hapeville, Palmetto, South Fulton, Fairburn, and Union City) \***New cases:** Cases diagnosed in the past 2 weeks only (using the date of sample collection).

**Fig. 2. Distribution of COVID 19 cases by Region (6/24/20)**

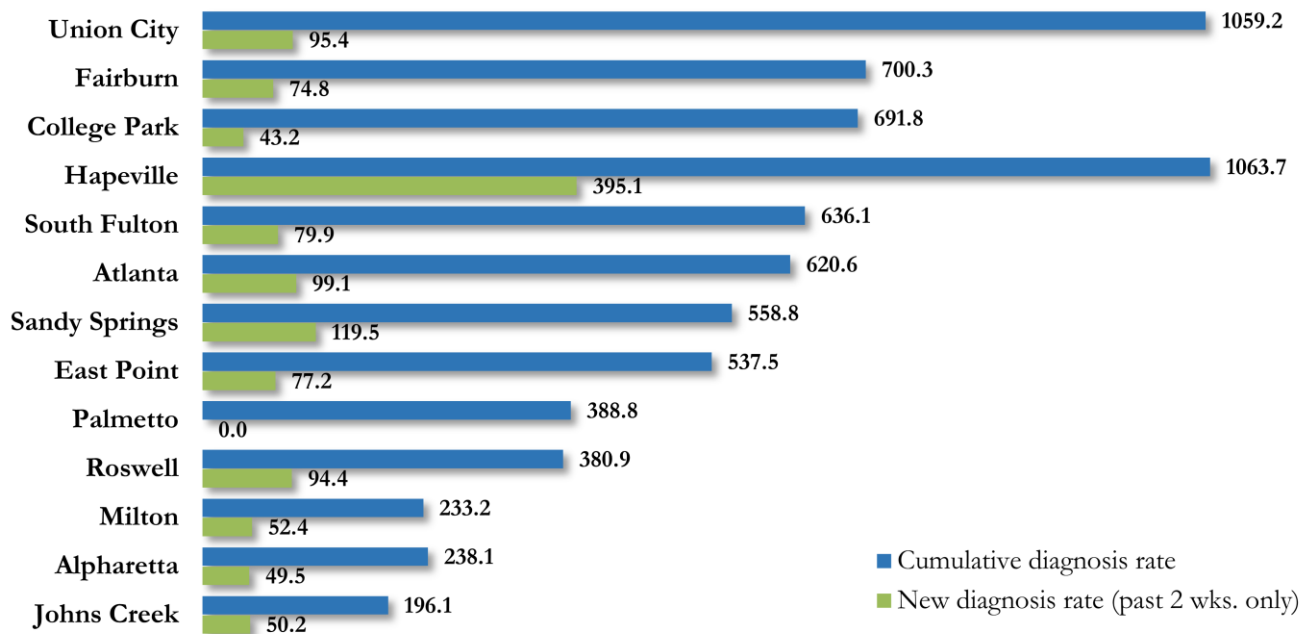


**COVID-19 CASE COUNTS AND RATES BY CITY**

	Prior (6/22/20)	Current Total (6/24/20)			New Cases (Period: 5/20/20 – 6/17/20) <sup>1</sup>			
	Count	Count	%	Cum. Rate <sup>2</sup>	Ist 14 d.	Last 14 d.	% change <sup>3</sup>	Rate <sup>4</sup> (last 14 d).
Atlanta	2568	2738	45.9%	620.6	335	437	↑ 30.4%	99.1
South Fulton	575	605	10.2%	636.1	47	76	↑ 61.7%	79.9
Sandy Springs	554	589	9.9%	558.8	79	126	↑ 59.5%	119.5
Roswell	329	359	6.0%	380.9	28	89	↑ 217.9%	94.4
East Point	180	188	3.2%	537.5	19	27	↑ 42.1%	77.2
Johns Creek	149	164	2.8%	196.1	<10	42	↑ 425.0%	50.2
Union City	210	222	3.7%	1059.2	25	20	↓ 20.0%	95.4
Alpharetta	138	154	2.6%	238.1	13	32	↑ 146.2%	49.5
Milton	85	89	1.5%	233.2	10	20	↑ 100.0%	52.4
Fairburn	102	103	1.7%	700.3	15	11	↓ 26.7%	74.8
College Park	95	96	1.6%	691.8	<10	<10	↓ 25.0%	43.2
Palmetto	16	17	0.3%	388.8	<10	0	-	0.0
Hapeville	62	70	1.2%	1063.7	19	26	↑ 36.8%	395.1
Mountain Park	0	0	0.0%	-	0	0	-	0.0
Unknown	546	565	9.5%	-	54	71	-	-

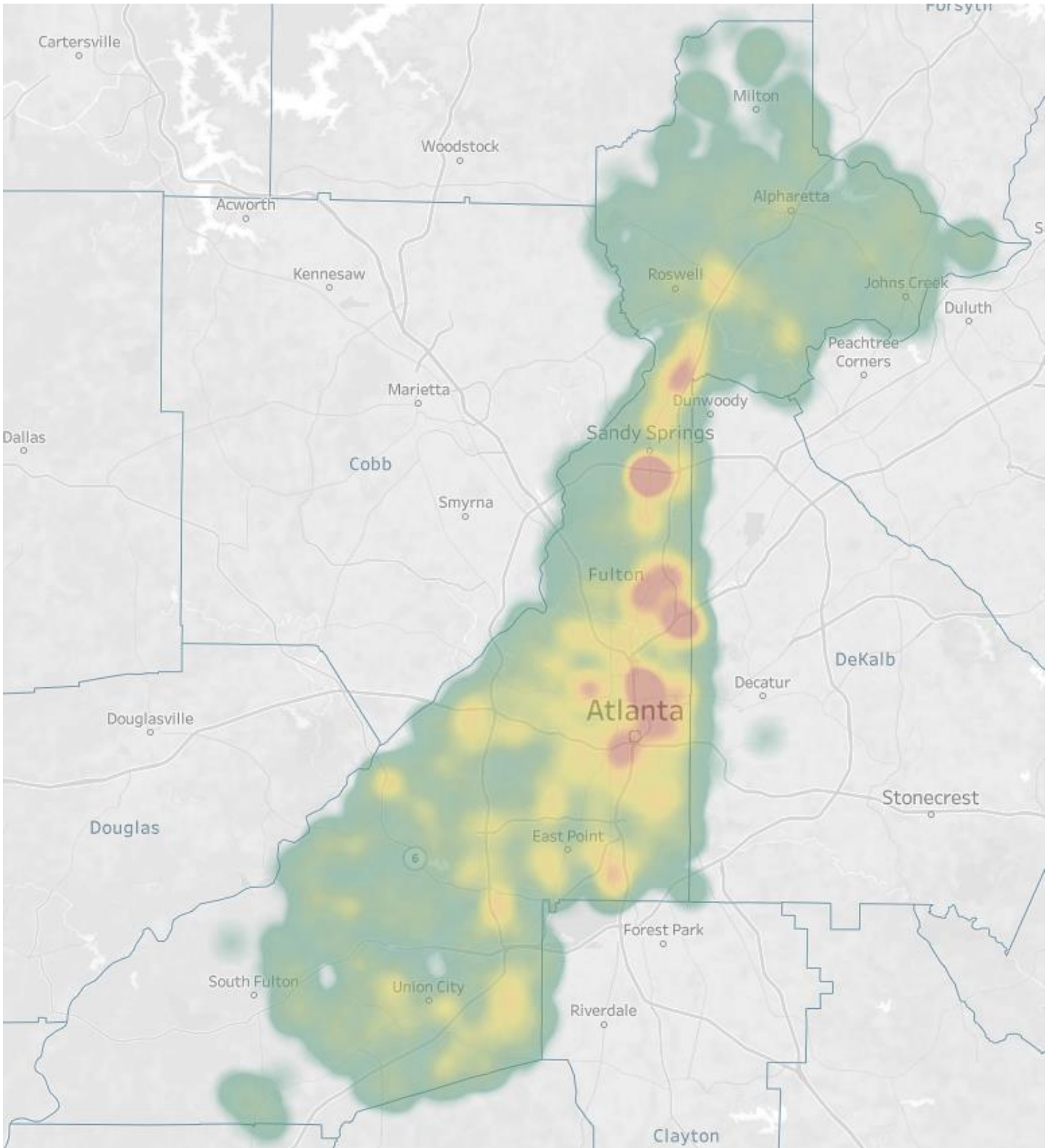
<sup>1</sup>**New cases:** Cases diagnosed in most recent 28 days (based on reported dates of positive sample collection). To allow for lag in reporting results of new diagnoses from samples collected in the most recent week, data used for incident diagnoses analyses were moved back by one week. <sup>2</sup>**Cumulative diagnosis rate:** Population estimates from US Census Bureau used to calculate cumulative diagnoses rate. All rates shown are per 100,000 persons. <sup>3</sup>**Percent change:** These reflect the percentage increase or decrease in new diagnoses between the 14 days preceding the most recent 7 days and the 14 days preceding that. Changes in cities with less than 10 cases in both 2 week intervals are not reported. <sup>4</sup>**Incidence Rate:** Rate of new diagnoses in the recent past 14 days. \*\*Data cleaning (either during case interviews or address geo-coding) may lead to reassignment of few cases from one territory to another based on their corrected addresses. These may appear as “decreases” when compared to the previous day’s count. These do not reflect errors in the data collection or analysis process but only reflect the minor day-to-day fluctuations in case counts that arise in an evolving public health database like COVID’s. **Note:** Sharp increases in territorial COVID case counts often reflect new cases diagnosed at long term care facilities located in those territories during facility-wide /mass screening events **All data reported are preliminary and subject to change.**

**Fig. 3. Incident & Cumulative Diagnoses Rates for COVID-19 by City (6/24/20)**



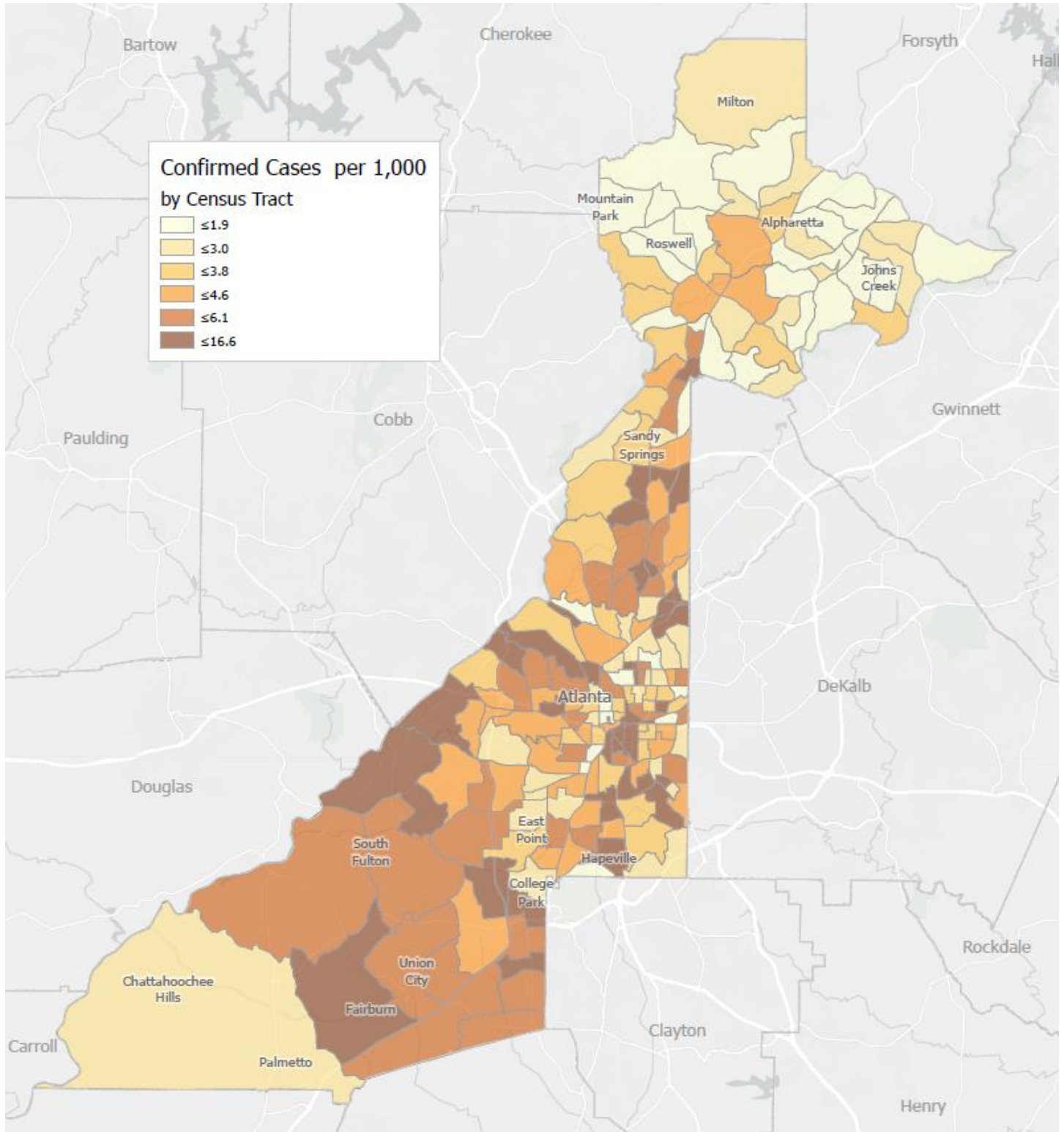
\*Rates shown are per 100,000 persons | **Note:** Mass testing in specific locations (e.g. long term care facilities) may cause sharp increases in the cumulative rate of COVID-19 diagnosis in those territories. All data shown are preliminary and are subject to change as testing results get updated.

Fig. 4. Density Map of COVID-19 Cases in Fulton County (6/24/20)



NB. Data used excludes the outbreak-related cases diagnosed at long-term care facilities and reflects the current geographical distribution of COVID19 diagnoses in the general Fulton County community.

Fig. 5. COVID-19 Diagnosis Rates in Fulton County by Census Tract (6/24/2020)



\*Rates shown are per 1,000 populations.

NB. Data used excludes the outbreak-related cases diagnosed at long-term care facilities and reflects the current geographical distribution of COVID19 diagnoses in



## COVID-19 CASE COUNTS BY ZIP CODE

	Prior (6/22/20)	Current Total (6/24/20)		New Cases (Period: 5/20/20 – 6/17/20) <sup>1</sup>		
	Count	Count	%	1st 14 days	Last 14 d.	% change <sup>2</sup>
30331	417	447	7.5%	28	54	↑ 92.9%
30318	343	361	6.1%	53	53	↔
30349	310	324	5.4%	32	38	↑ 18.8%
30213	230	240	4.0%	27	29	↑ 7.4%
30315	173	186	3.1%	14	23	↑ 64.3%
30344	169	174	2.9%	17	24	↑ 41.2%
30311	159	174	2.9%	<10	33	↑ 312.5%
30342	268	288	4.8%	38	52	↑ 36.8%
30314	212	214	3.6%	28	13	↓ 53.6%
30310	185	197	3.3%	51	25	↓ 51.0%
30308	88	97	1.6%	<10	15	↑ 1400.0%
30022	138	154	2.6%	18	37	↑ 105.6%
30327	113	117	2.0%	23	16	↓ 30.4%
30004	116	129	2.2%	15	24	↑ 60.0%
30309	153	165	2.8%	15	22	↑ 46.7%
30076	126	141	2.4%	<10	47	↑ 487.5%
30291	234	245	4.1%	24	21	↓ 12.5%
30350	156	166	2.8%	22	55	↑ 150.0%
30075	188	199	3.3%	10	46	↑ 360.0%
30328	135	143	2.4%	16	33	↑ 106.3%
30316	54	56	0.9%	<10	<10	-
30312	251	260	4.4%	<10	28	↑ 460.0%
30005	63	68	1.1%	<10	17	↑ 466.7%
30305	173	189	3.2%	43	47	↑ 9.3%
30306	53	53	0.9%	<10	<10	-
30324	175	193	3.2%	44	52	↑ 18.2%
30337	92	94	1.6%	10	<10	↓ 60.0%
30009	58	62	1.0%	<10	11	↑ 57.1%
30313	45	46	0.8%	<10	<10	-
30326	36	39	0.7%	<10	10	↑ 150.0%
30097	53	54	0.9%	<10	10	↑ 150.0%
30354	91	102	1.7%	23	33	↑ 43.5%
30303	40	43	0.7%	<10	<10	-
30339	15	17	0.3%	<10	<10	-
30268	22	23	0.4%	<10	<10	-
30307	20	24	0.4%	<10	<10	-
30319	34	35	0.6%	<10	<10	-
30336	29	31	0.5%	<10	12	↑ 100.0%
30296	13	13	0.2%	0	<10	-
30363	<10	11	0.2%	<10	<10	-
30301	<10	<10	<0.1%	0	<10	-
30345	11	11	0.2%	<10	<10	-
31131	<10	<10	<0.1%	0	0	↔
30023	<10	<10	<0.1%	<10	0	↓ 100.0%
30080	<10	<10	<0.1%	0	0	↔
30135	<10	<10	<0.1%	0	0	↔
30138	<10	<10	<0.1%	0	0	↔
30139	-	-	-	0	0	↔
30321	<10	<10	<0.1%	<10	0	↓ 100.0%
30340	12	12	0.2%	<10	<10	-
30341	15	16	0.3%	<10	<10	-
30358	<10	<10	<0.1%	0	0	↔

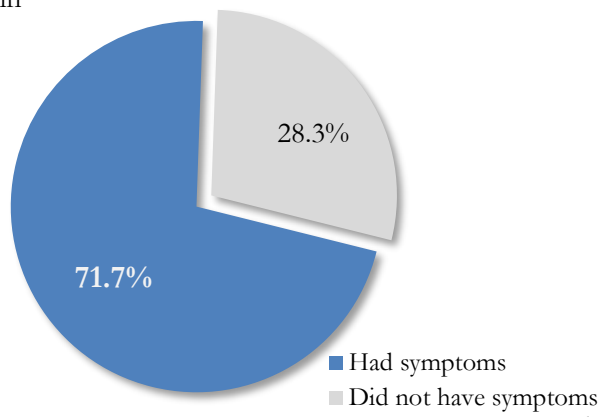
30374	20	20	0.3%	<10	<10	-
30606	<10	<10	<0.1%	0	0	↔
31150	<10	<10	<0.1%	0	0	↔
30024	-	<10	<0.1%	0	<10	-
30098	-	-	-	0	0	↔
30334	<10	<10	<0.1%	<10	0	↓ 100.0%
30338	<10	<10	<0.1%	<10	<10	-
Unknown	289	300	5.0%	25	44	-

<sup>1</sup>**New cases:** Cases diagnosed in most recent 28 days (based on reported dates of positive sample collection). To allow for lag in reporting results of new diagnoses from samples collected in the most recent week, data used for incident diagnoses analyses were moved back by one week. <sup>2</sup>**Percent change:** These reflect the percentage increase or decrease of new diagnoses between the 14 days preceding the past 7 days and the 14 days preceding that. Changes in ZIP codes with less than 10 cases in both 2 week intervals are not reported\*\*Data cleaning (either during case interviews or address geo-coding) may lead to reassignment of few cases from one territory to another based on their corrected addresses. These may appear as “decreases” when compared to the previous day’s count. These do not reflect errors in the data collection or analysis process but only reflect the minor day-to-day fluctuations in case counts that arise in an evolving public health database like COVID’s. **Note:** Sharp increases in territorial COVID case counts often reflect new cases diagnosed at long term care facilities located in those territories during facility-wide /mass screening events **All data reported are preliminary and subject to change.**

### REPORTING SYMPTOMS AMONG PERSONS DIAGNOSED WITH COVID-19 IN FULTON

People with COVID-19 have reported a wide range of symptoms ranging from mild symptoms to severe illness. Symptoms may appear 2-14 days after exposure to the virus. Symptoms reported include: cough, shortness of breath/difficulty breathing, fever, chills, repeated shaking with chills, muscle pain, headache, sore throat, new loss of taste or smell – Centers for Disease Control and Prevention (CDC) <https://www.cdc.gov/coronavirus/2019-ncov/symptoms-testing/symptoms.html>

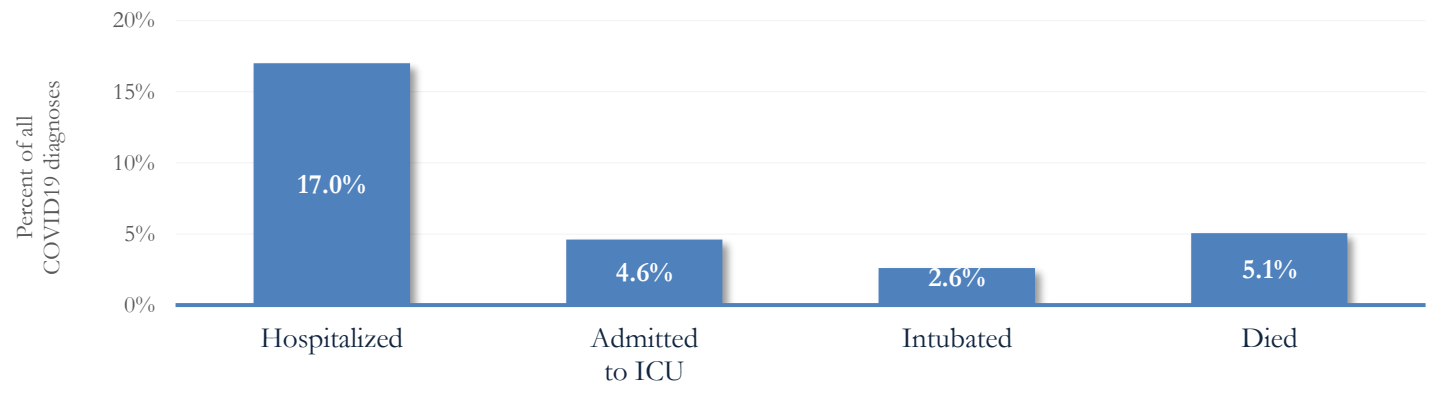
Fig. 6. Proportion reporting Symptoms in Fulton County (6/24/20)



\*\*\*COVID-19 cases who have been case interviewed or had medical charts reviewed as at 6/24/20 only\*\*\*

### COVID-19 HOSPITALIZATIONS, ICU ADMISSIONS AND DEATHS IN FULTON

Fig. 7. Hospitalizations, ICU Admissions and Deaths among COVID-19 Diagnoses in Fulton County (6/24/20)



## DEMOGRAPHIC DISTRIBUTIONS – COVID 19 DIAGNOSES AND DEATHS IN FULTON

Distribution of COVID-19 diagnoses in Fulton County by Fulton Region – 6/24/20

	North Fulton Cities <sup>1</sup> Count (%)	Atlanta Count (%)	South Fulton Cities <sup>2</sup> Count (%)	Unknown City Count (%)	All Fulton Count (%)
<b>Total COVID-19 cases</b>	1355	2738	1301	565	5959
<b>Gender:</b> Female	639 (47.2%)	1335 (48.8%)	735 (56.5%)	286 (50.6%)	2995 (50.3%)
Male	694 (51.2%)	1367 (49.9%)	537 (41.3%)	274 (48.5%)	2872 (48.2%)
Unknown	22 (1.6%)	36 (1.3%)	29 (2.2%)	<10	92 (1.5%)
<b>Age:</b> <15	41 (3.0%)	31 (1.1%)	21 (1.6%)	17 (3.0%)	110 (1.8%)
15-24	196 (14.5%)	282 (10.3%)	108 (8.3%)	44 (7.8%)	630 (10.6%)
25-34	227 (16.8%)	515 (18.8%)	177 (13.6%)	118 (20.9%)	1037 (17.4%)
35-44	242 (17.9%)	417 (15.2%)	213 (16.4%)	93 (16.5%)	965 (16.2%)
45-54	234 (17.3%)	353 (12.9%)	229 (17.6%)	91 (16.1%)	907 (15.2%)
55-64	188 (13.9%)	375 (13.7%)	219 (16.8%)	70 (12.4%)	852 (14.3%)
65-74	116 (8.6%)	362 (13.2%)	157 (12.1%)	42 (7.4%)	677 (11.4%)
≥75	109 (8.0%)	388 (14.2%)	174 (13.4%)	85 (15.0%)	756 (12.7%)
Unknown	<10	15 (0.5%)	<10	<10	25 (0.4%)
<b>Race:</b> Asian, NH	59 (4.4%)	34 (1.2%)	<10	13 (2.3%)	109 (1.8%)
Black, NH	169 (12.5%)	1439 (52.6%)	885 (68.0%)	198 (35.0%)	2691 (45.2%)
White, NH	436 (32.2%)	489 (17.9%)	95 (7.3%)	103 (18.2%)	1123 (18.8%)
Hispanic	283 (20.9%)	188 (6.9%)	73 (5.6%)	65 (11.5%)	609 (10.2%)
Other, NH	39 (2.9%)	56 (2.0%)	18 (1.4%)	19 (3.4%)	132 (2.2%)
Unknown	369 (27.2%)	532 (19.4%)	227 (17.4%)	167 (29.6%)	1295 (21.7%)

<sup>1</sup>Includes all Fulton County cities north of Atlanta metro (Alpharetta, Milton, Johns Creek, Roswell, Sandy Springs, Mountain Park ) <sup>2</sup>Includes all cities south of Atlanta (College Park, Chattahoochee Hills, East Point, Hapeville, Palmetto, South Fulton, Fairburn, Union City). **Note:** All data reported are preliminary and subject to change.

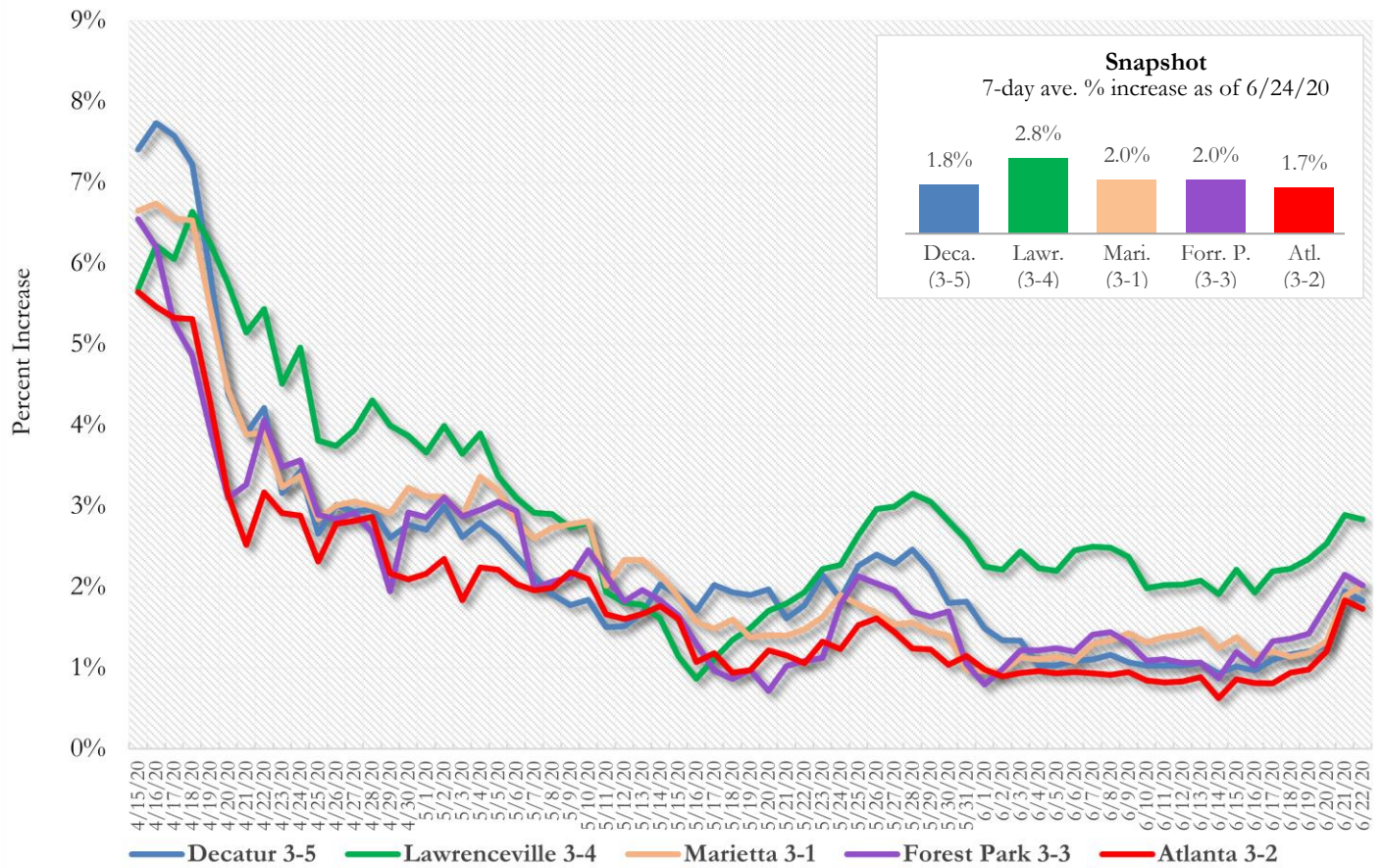
Distribution of COVID-19 Deaths in Fulton County by Fulton Region – 6/24/20

	North Fulton Cities <sup>1</sup> Count (%)	Atlanta Count (%)	South Fulton Cities <sup>2</sup> Count (%)	Unknown City Count (%)	All Fulton Count (%)
<b>Total COVID-19 deaths</b>	38	142	93	28	301
<b>Gender:</b> Female	13 (34.2%)	55 (38.7%)	50 (53.8%)	17 (60.7%)	135 (44.9%)
Male	25 (65.8%)	87 (61.3%)	43 (46.2%)	11 (39.3%)	166 (55.1%)
Unknown	0	0	0	0	0
<b>Age:</b> <65	<10	25 (17.6%)	26 (28.0%)	<10	59 (19.6%)
65-74	<10	36 (25.4%)	24 (25.8%)	<10	69 (22.9%)
75-84	11 (28.9%)	41 (28.9%)	19 (20.4%)	<10	79 (26.2%)
≥85	16 (42.1%)	40 (28.2%)	24 (25.8%)	14 (50.0%)	94 (31.2%)
Unknown	0	0	0	0	0
<b>Race:</b> Asian, NH	0	<10	0	0	<10
Black, NH	<10	123 (86.6%)	80 (86.0%)	14 (50.0%)	223 (74.1%)
White, NH	29 (76.3%)	13 (9.2%)	10 (10.8%)	13 (46.4%)	65 (21.6%)
Hispanic	<10	<10	<10	<10	<10
Other, NH	0	<10	0	0	<10
Unknown	0	<10	0	0	<10

<sup>1</sup>Includes all Fulton County cities north of Atlanta metro (Alpharetta, Milton, Johns Creek, Roswell, Sandy Springs, Mountain Park ) <sup>2</sup>Includes all cities south of Atlanta (College Park, Chattahoochee Hills, East Point, Hapeville, Palmetto, South Fulton, Fairburn, Union City). **Note:** All data reported are preliminary and subject to change.

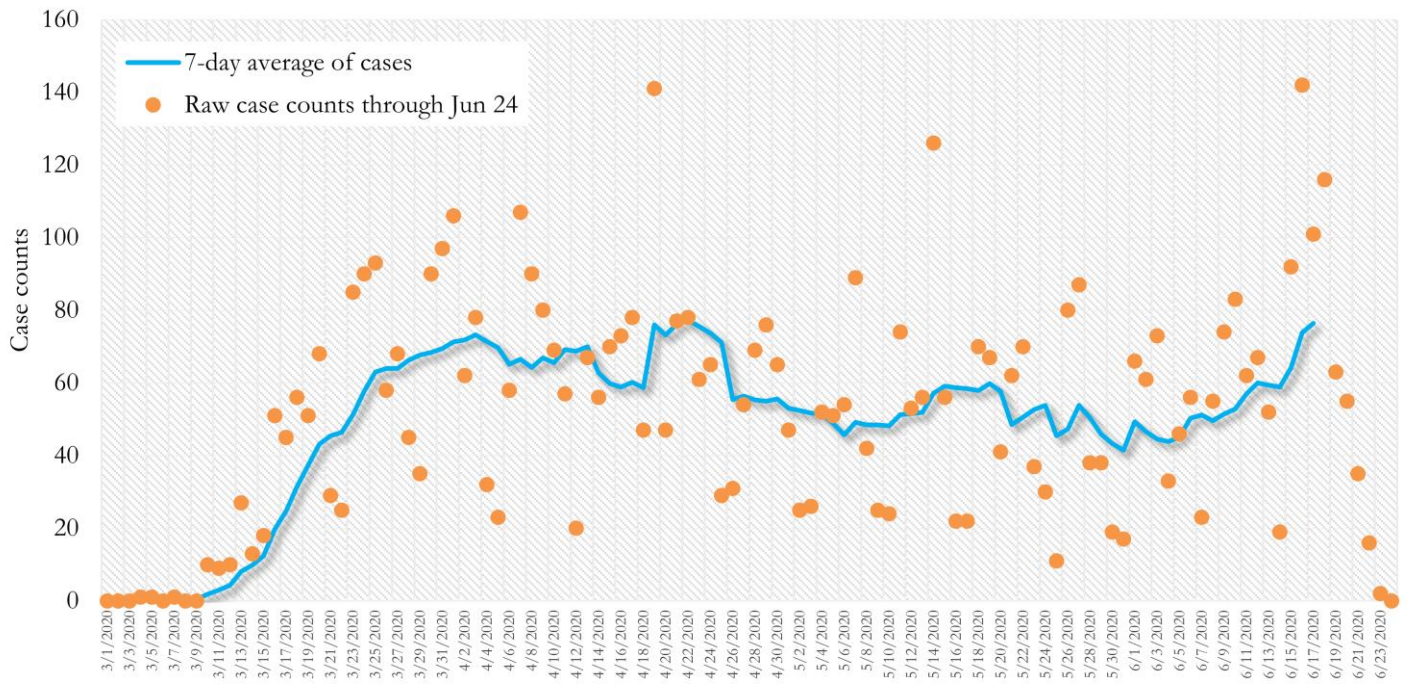
MORBIDITY AND MORTALITY TRENDS

**Fig. 8. Daily Percent Increase for Atlanta Metro Districts  
(Averaged over 7 days)**



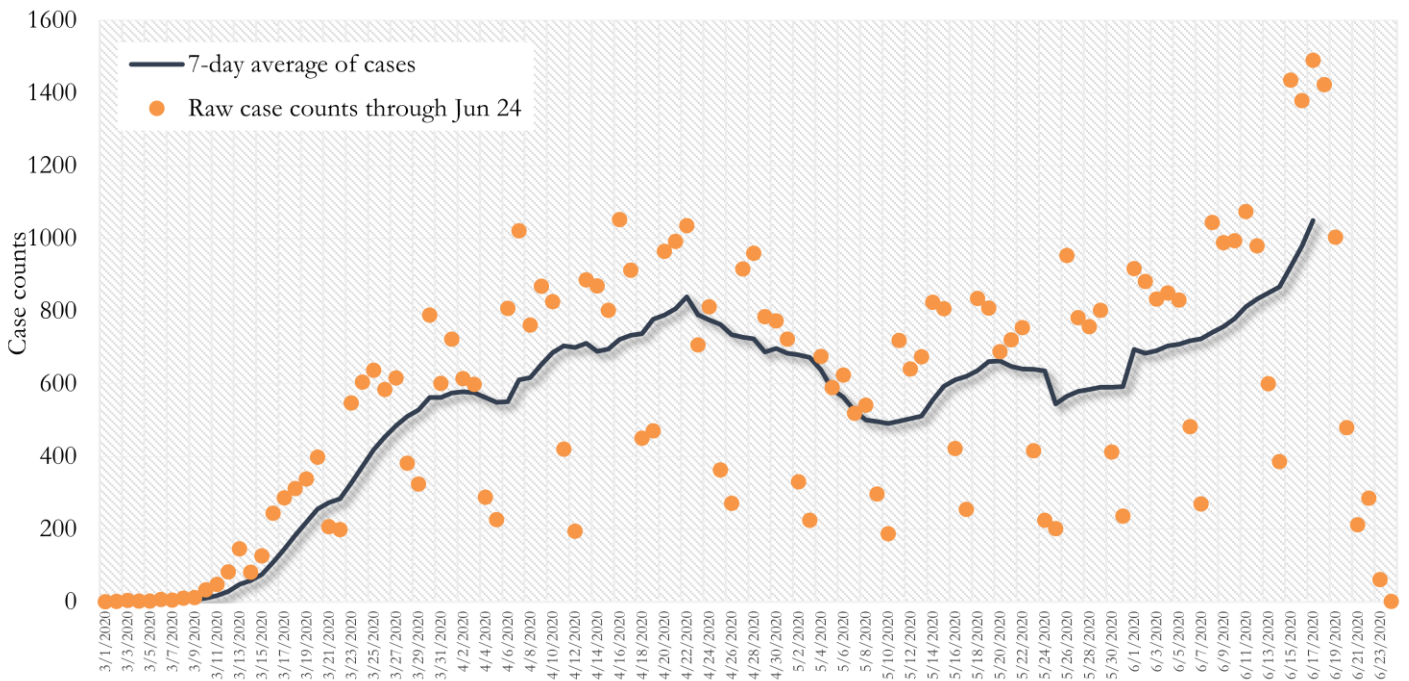


**Fig. 11. New COVID-19 Cases in Fulton County Daily (Averaged over 7 days)  
Mar 01, 2020 - Jun 17, 2020**



\*Date of collection of first positive sample used (report creation date used where sample collection date is missing).

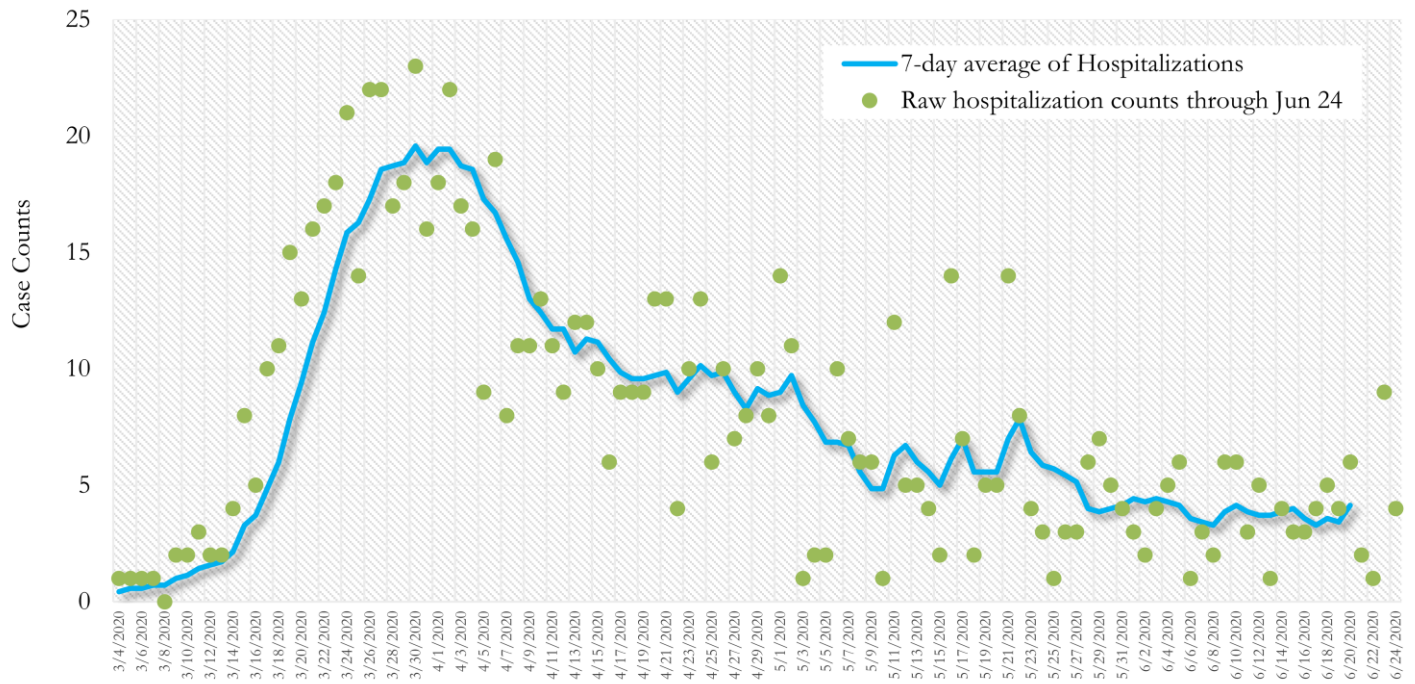
**Fig. 10. New COVID-19 Cases in Georgia State Daily (Averaged over 7 days)  
Mar 01, 2020 - Jun 17, 2020**



\*Date of collection of first positive sample used (report creation date used where sample collection date is missing).

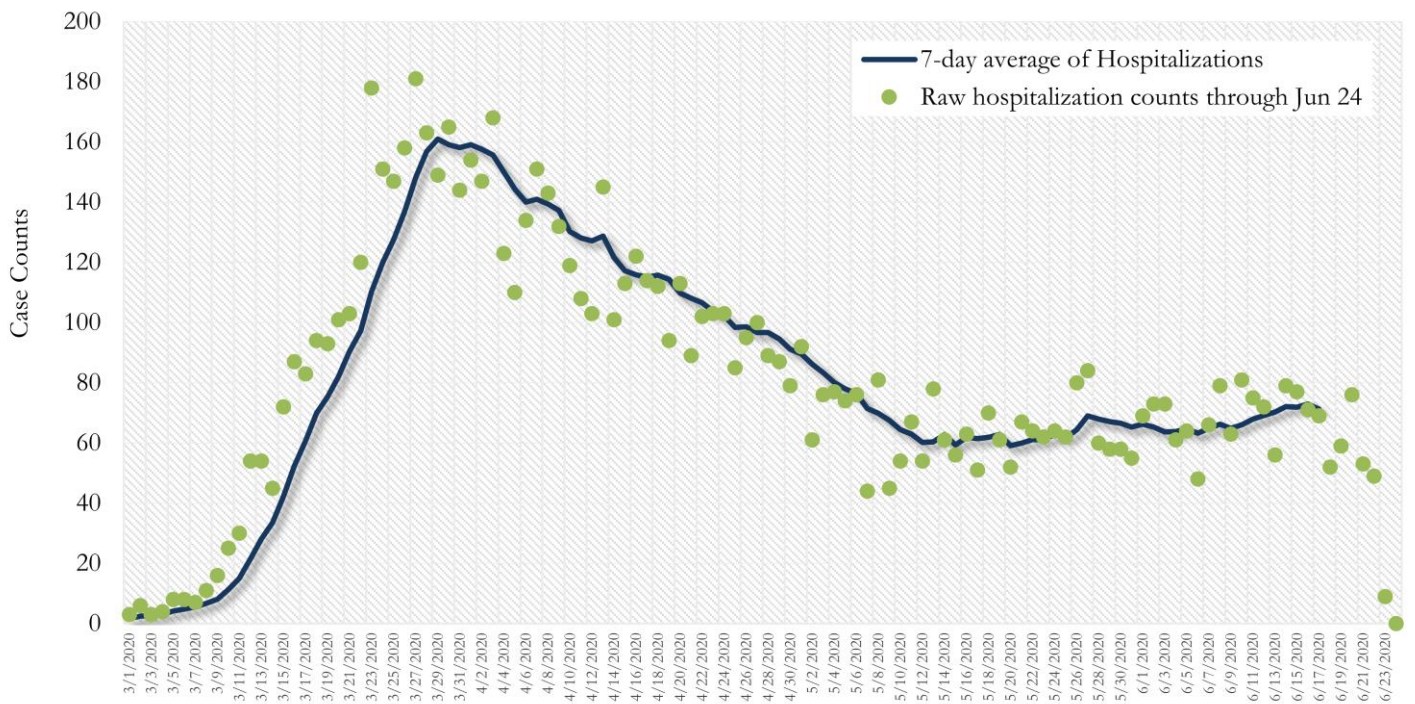


**Fig. 11. COVID-19 Hospitalizations in Fulton County Daily (Averaged over 7 days)  
Mar 01, 2020 - Jun 17, 2020**



\*Date of collection of first positive sample used (report creation date used where sample collection date is missing).

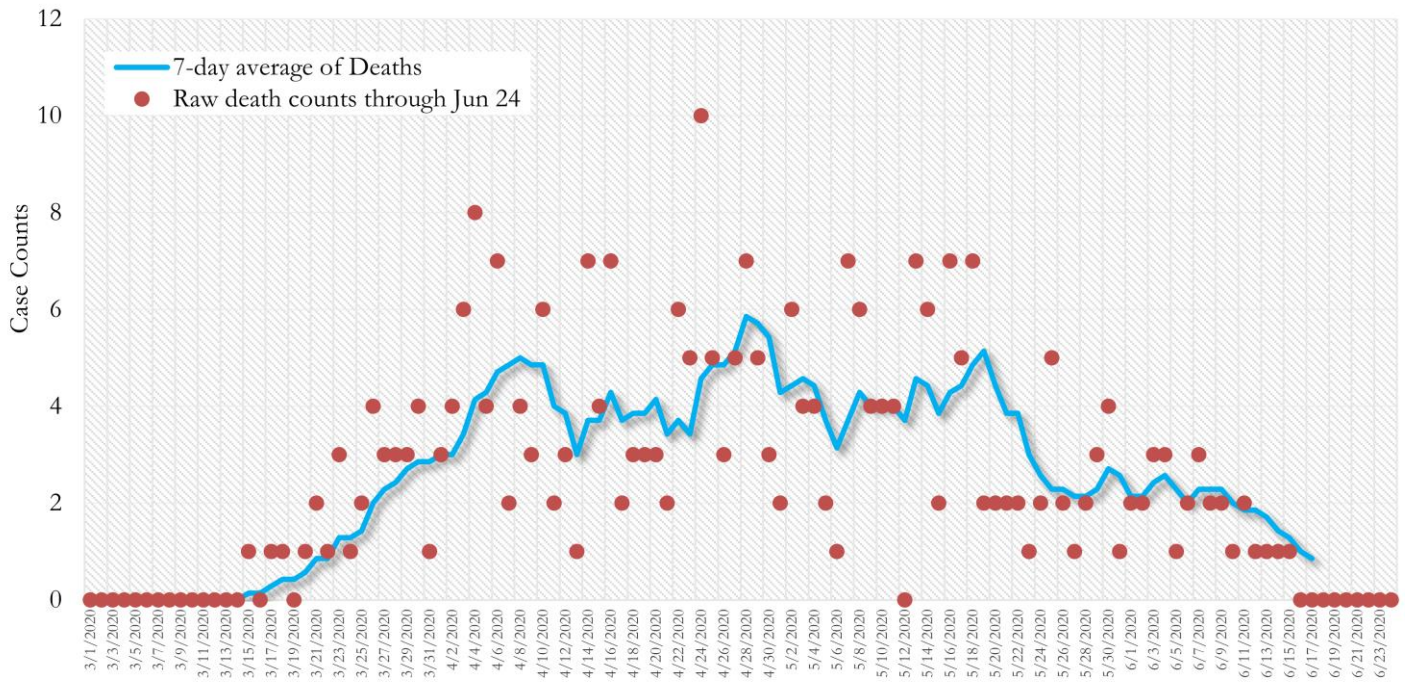
**Fig. 12. COVID-19 Hospitalizations in Georgia State Daily (Averaged over 7 days)  
March 01, 2020 - Jun 17, 2020**



\*Date of collection of first positive sample used (report creation date used where sample collection date is missing).

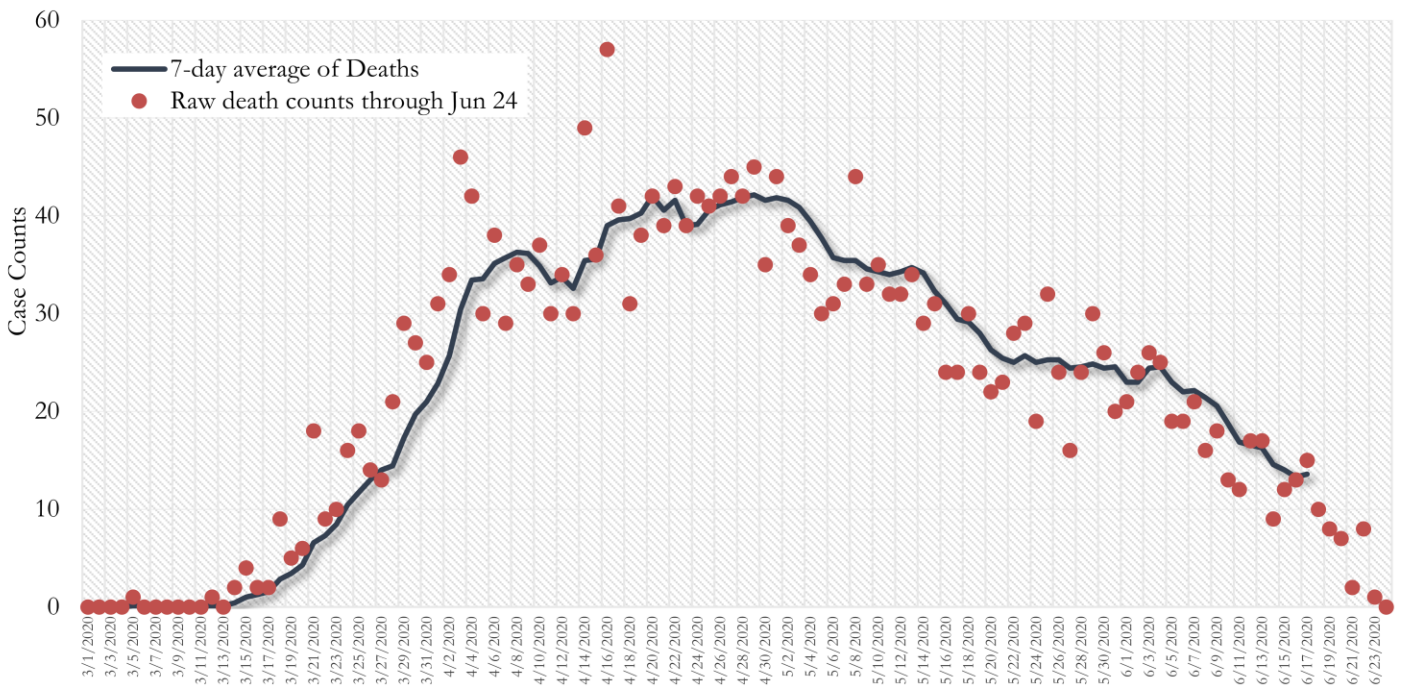


**Fig. 13. COVID-19 Deaths in Fulton County Daily (Averaged over 7 days)  
Mar 01, 2020 - Jun 17, 2020**



\*Reported date of death used.

**Fig. 14. COVID-19 Deaths in Georgia State Daily (Averaged over 7 days)  
Mar 01, 2020 - Jun 17, 2020**



\* Reported date of death used.

## COVID-19 IN LONG-TERM CARE FACILITIES IN FULTON

Older persons (aged 65 years and older) and persons who live in nursing homes or other long-term care facilities seem to be at higher risk for developing more serious complications from COVID-19. Extra precautions are recommended for individuals within this risk groups – Centers for Disease Control and Prevention (CDC 2020) <https://www.cdc.gov/coronavirus/2019-ncov/need-extra-precautions/people-at-higher-risk.html>

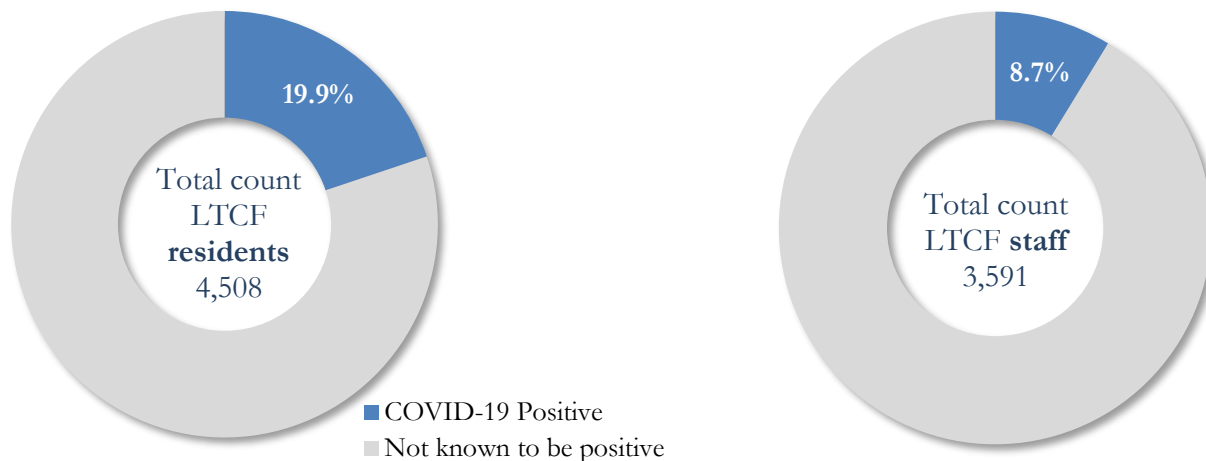
### COVID-19 Diagnoses and Deaths in Fulton County Associated with Long-Term Care Facilities (6/24/20)



\*\*\*LTCF → Long-term Care Facility (Includes residents and Staff) \*\*\*

**COVID-19 POSITIVITY:** COVID-19 testing is currently being provided at various long-term care facilities in Fulton County through the efforts of the Board of Health and the National Guard. See <https://dch.georgia.gov/> for a line listing of COVID-19 cases at all facilities in Georgia.

### COVID-19 Positivity at 47 reporting Long-Term Care Facilities (LTCF) in Fulton County (6/24/20)



### COVID-19 Cases, Hospitalizations, and Deaths among reporting Long-Term Care Facilities in Fulton County (6/24/20)

	LTCF Residents (n=4,508)			LTCF Staff (n=3,589)		
	Cases	Hospitalizations	Deaths	Cases	Hospitalizations	Deaths
<b>Average</b> (count per fac.) <sup>1</sup>	19	4	3	7	<1	<0.1
<b>Median</b> (count per fac.) <sup>1</sup>	2	2	1	2	0	0
<b>Lowest counts</b>	0	0	0	0	0	0
<b>Highest counts</b>	126	32	23	41	6	1
<b>Total Count</b>	<b>895 (19.9%)<sup>a</sup></b>	<b>188 (21.0%)<sup>b</sup></b>	<b>147 (16.4%)<sup>b</sup></b>	<b>314 (8.7%)<sup>a</sup></b>	<b>18 (5.7%)<sup>b</sup></b>	<b>1 (0.3%)<sup>b</sup></b>

<sup>a</sup> Percentage shown reflects proportion of total residents/staff tested who were positive (i.e. COVID-19 Positivity). | <sup>b</sup> Percentages shown are proportions of persons residents/staff diagnosed with COVID-19 who were hospitalized or died after diagnoses.