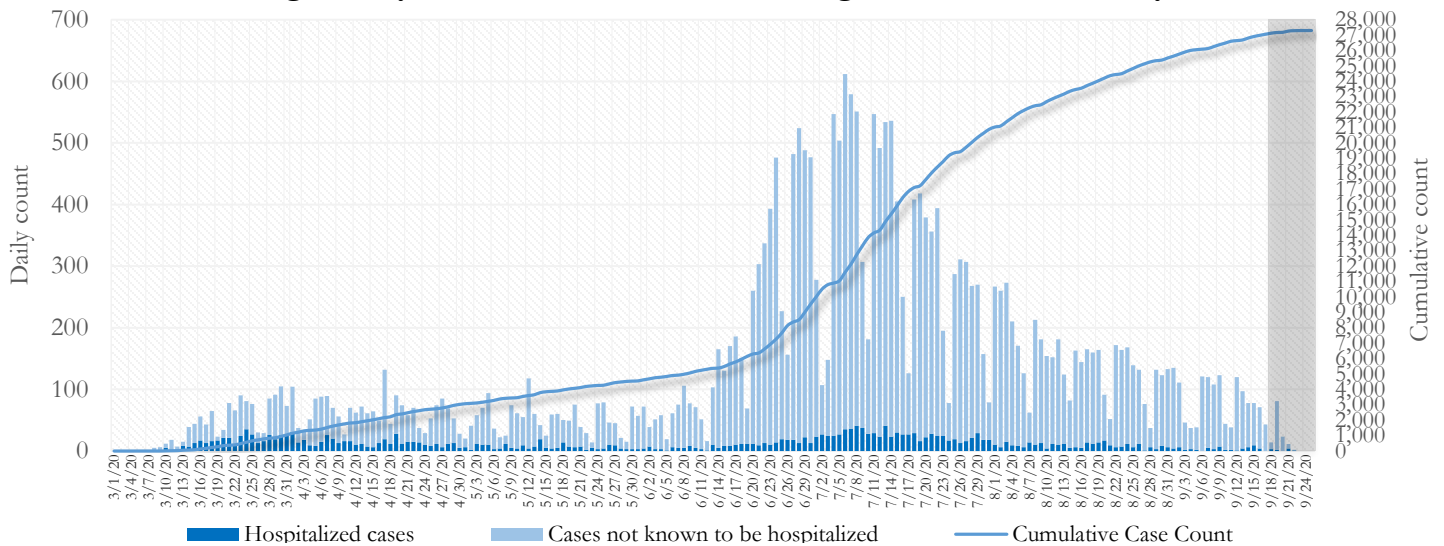


SUMMARY

- As of September 25, 2020, Fulton County has recorded **27,291 cases of the 2019 novel coronavirus (COVID-19)** and **531 confirmed COVID-19 deaths**. 40 deaths are currently being reviewed by GaDPH to confirm cause of death.
- Of **1,225 new diagnoses** made between September 4 and September 18, the central portion of the county (Atlanta metro) accounted for 36% while the northern and southern parts accounted for 41% and 15% respectively.
- By city, new COVID-19 case rates range from 60.8 per 100,000 persons (Hapeville) to 170.8 per 100,000 persons (Roswell). [**Fulton County Diagnoses Rates (per 100,000 persons): Cumulative – 2565.1; Incidence –115.1**]. See map showing incident case rate by ZIP code on Pg.17.
- Among all persons diagnosed with COVID-19 in Fulton County since May 1, **6.7% required hospitalization and 1.9% died**.
- Of all testing done in Fulton County between August 31 and September 13, the **percent positivity rate was 5%**.

Fig 1. Daily and Cumulative COVID-19 diagnoses in Fulton County, GA



*Counts shown reflect the number of confirmed cases as of 6:30 pm on 9/24/20 using the date of first positive sample collection. Where date of sample collection was not available or missing, the date of report creation in GA SENDSS was used instead. **Note:** Delays in data reporting may cause changes in data counts, particularly in the shaded portion. Data throughout this report is preliminary and subject to ongoing data cleaning processes, and thus is subject to change.


DISTRIBUTION OF COVID-19 DIAGNOSES BY REGION

New cases: 36% of the new COVID-19 cases diagnosed in the past 2 weeks occurred in Atlanta while 41% and 15% occurred in the Northern and Southern regions of the county respectively.

Fulton Region	% Cumulative count	% New cases*
Atlanta	42.4%	36.2%
North ¹	27.6%	41.4%
South ²	19.9%	15.0%
Unincorporated/Unknown	10.2%	7.4%

¹Includes all Fulton County cities north of Atlanta metro (Alpharetta, Milton, Johns Creek, Roswell, Sandy Springs, Mountain Park) |²Includes all cities south of Atlanta (College Park, Chattahoochee Hills, East Point, Hapeville, Palmetto, South Fulton, Fairburn, and Union City) ***New cases:** Cases diagnosed in the past 2 weeks only (between 9/4/20 – 9/18/20).

In the past two weeks (9/4-9/18), there were fewer new cases of COVID-19 in Fulton County than the previous two weeks (8/21-9/3).



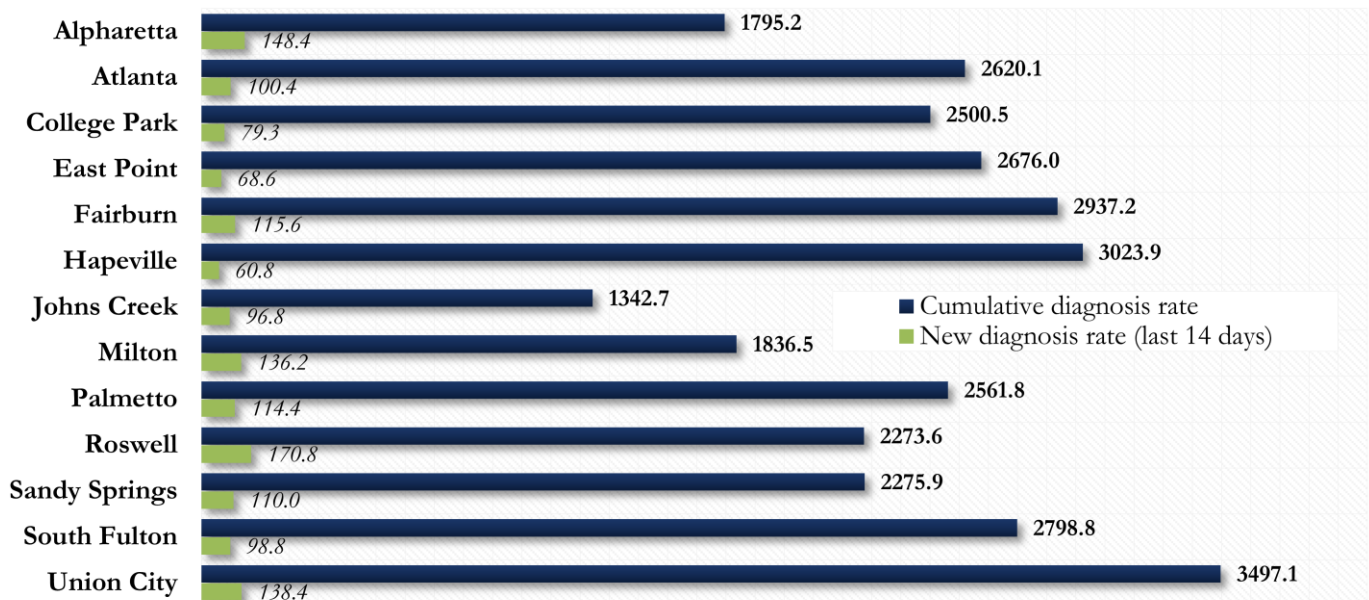
*Delayed a week to account for testing results turnaround time.

COVID-19 CASE COUNTS AND RATES BY CITY

	Prior (9/22/20)	Current Total (9/25/20)			New Cases (Period: 8/21/20 – 9/18/20) ¹			
	Count	Count	%	Cum. Rate ²	1st 14 d. (8/21–9/3)	Last 14 d. (9/4–9/18)	% change ³	Rate ⁴ (Last 14 d).
Alpharetta	1149	1161	4.3%	1795.2	142	96	↓ 32.4%	148.4
Atlanta	11460	11559	42.4%	2620.1	611	443	↓ 27.5%	100.4
Chattahoochee Hills	0	0	0.0%	-	-	-	-	-
College Park	342	347	1.3%	2500.5	14	11	↓ 21.4%	79.3
East Point	924	936	3.4%	2676.0	48	24	↓ 50.0%	68.6
Fairburn	431	432	1.6%	2937.2	18	17	↓ 5.6%	115.6
Hapeville	199	199	0.7%	3023.9	13	<10	↓ 69.2%	60.8
Johns Creek	1107	1123	4.1%	1342.7	119	81	↓ 31.9%	96.8
Milton	691	701	2.6%	1836.5	86	52	↓ 39.5%	136.2
Mountain Park	6	6	0.0%	960.0	0	<10	-	-
Palmetto	110	112	0.4%	2561.8	<10	<10	↑ 25.0%	114.4
Roswell	2120	2143	7.9%	2273.6	218	161	↓ 26.1%	170.8
Sandy Springs	2357	2399	8.8%	2275.9	166	116	↓ 30.1%	110.0
South Fulton	2635	2662	9.8%	2798.8	101	94	↓ 6.9%	98.8
Union City	721	733	2.7%	3497.1	23	29	↑ 26.1%	138.4
Unknown	3039	2778	10.2%	-	132	91	-	-

¹**New cases:** Cases diagnosed in most recent 28 days (based on reported dates of positive sample collection). To allow for lag in reporting results of new diagnoses from samples collected in the most recent week, data used for incident diagnoses analyses were moved back by one week. ²**Cumulative diagnosis rate:** Population estimates from US Census Bureau used to calculate cumulative diagnoses rate. All rates shown are per 100,000 persons. ³**% change:** These reflect the percentage increase or decrease in new diagnoses between the 14 days preceding the most recent 7 days and the 14 days preceding that. Changes in cities with less than 10 cases in both 2 week intervals are not reported. ⁴**(Incidence) Rate:** Rate of new diagnoses in the last 14 day period preceding the immediate past week. ****Data cleaning** (either during case interviews or address geo-coding) may lead to reassignment of few cases from one territory to another based on their corrected addresses. These may appear as “decreases” when compared to the previous day’s count. These do not reflect errors in the data collection or analysis process but only reflect the minor day-to-day fluctuations in case counts that arise in an evolving public health database like COVID’s. **Note: All data reported are preliminary and subject to change.**

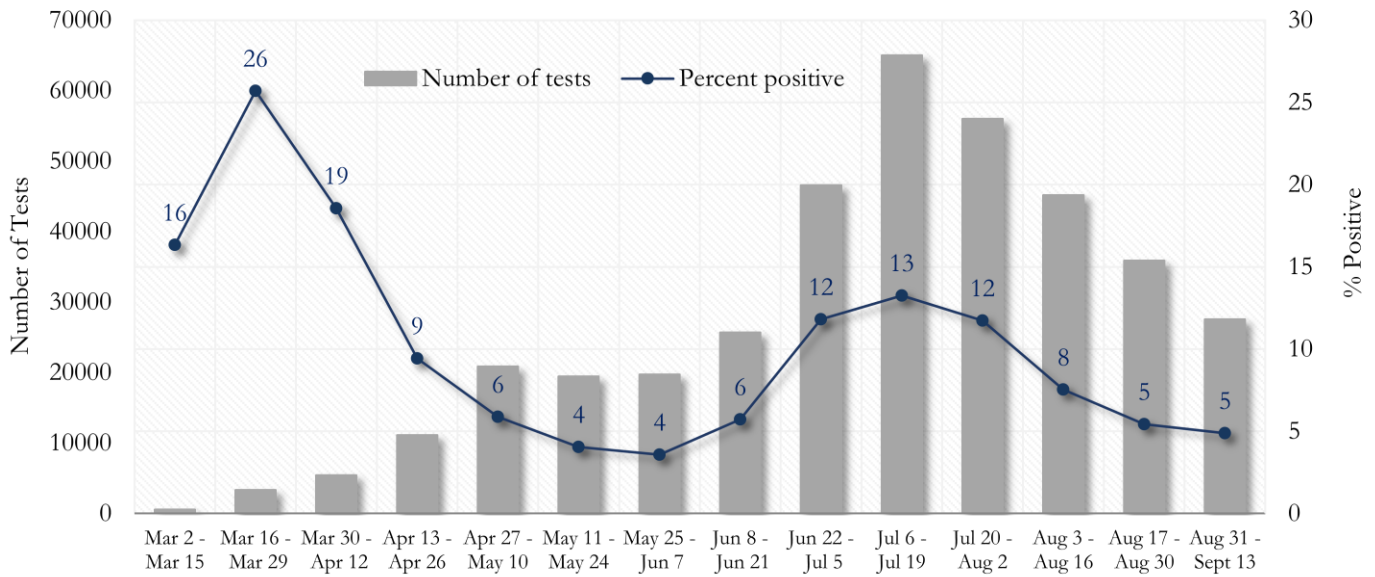
Fig. 2. Incident & Cumulative Diagnoses Rates for COVID-19 by City



*Rates shown are per 100,000 persons | **Note:** Mass testing in specific locations (e.g. long term care facilities) may cause sharp increases in the cumulative rate of COVID-19 diagnosis in those territories. All data shown are preliminary and are subject to change as testing results get updated.

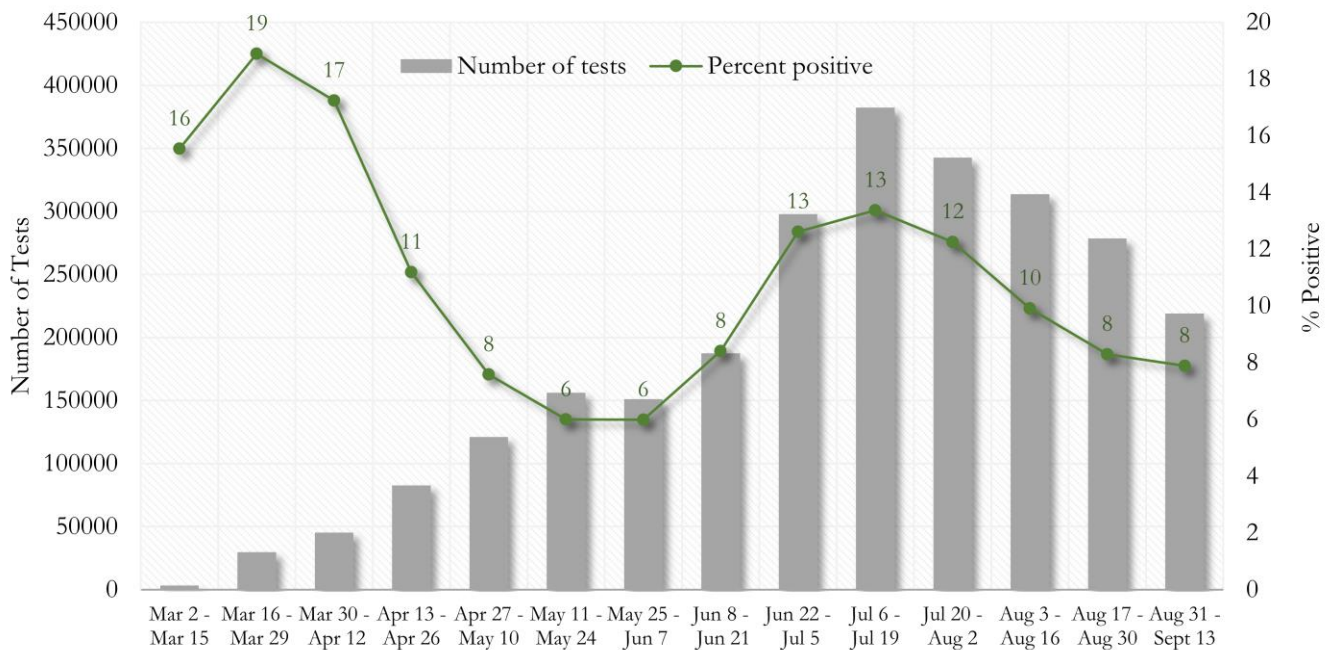
COVID-19 TESTING AND POSITIVITY IN FULTON COUNTY AND GEORGIA

Fig. 3. Trends in Positive COVID-19 Tests in Fulton County by 14-day Periods



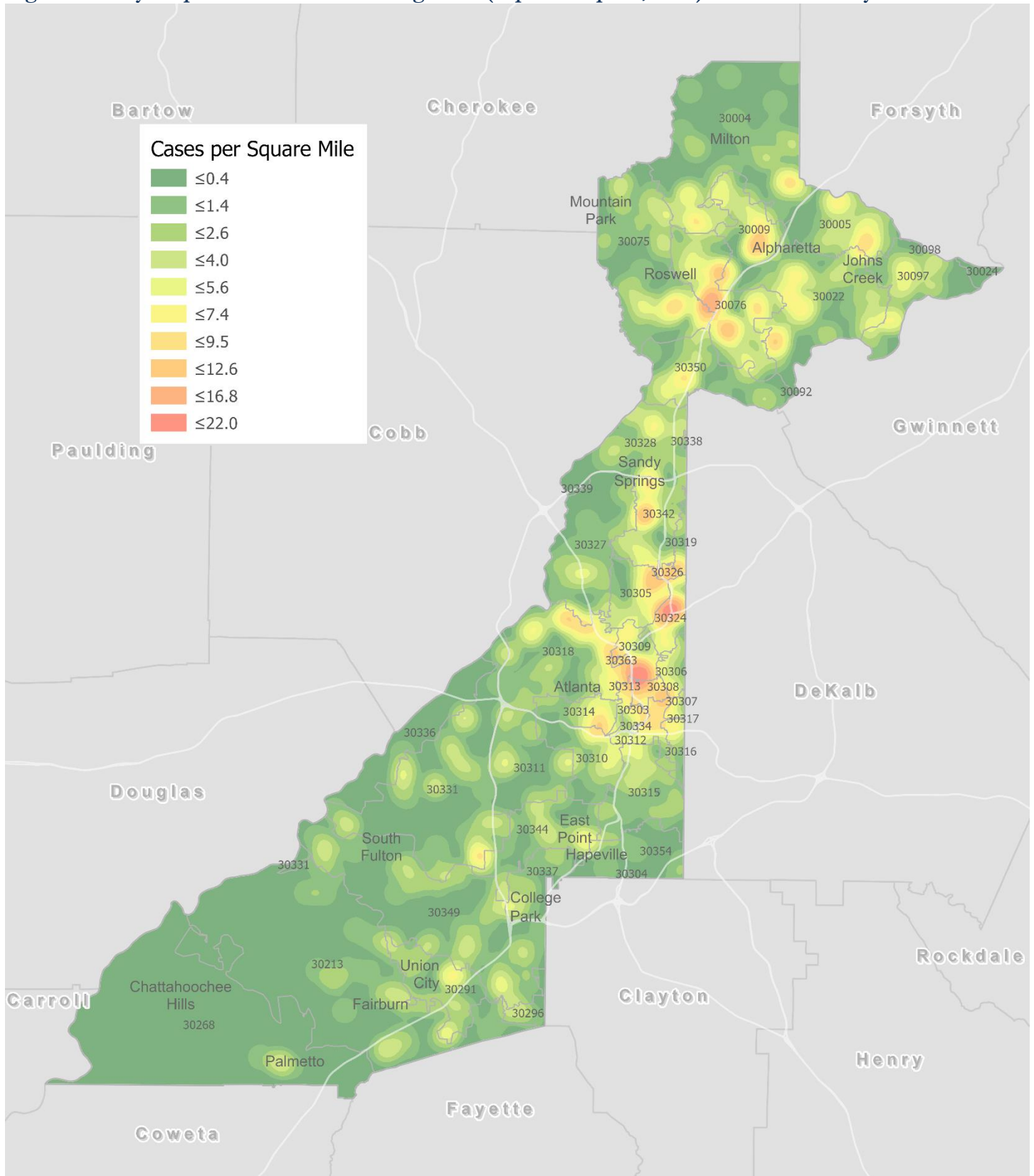
*Data on Polymerase Chain Reaction (PCR) tests only included.

Fig. 4. Trends in Positive COVID-19 Tests in Georgia by 14-day Periods



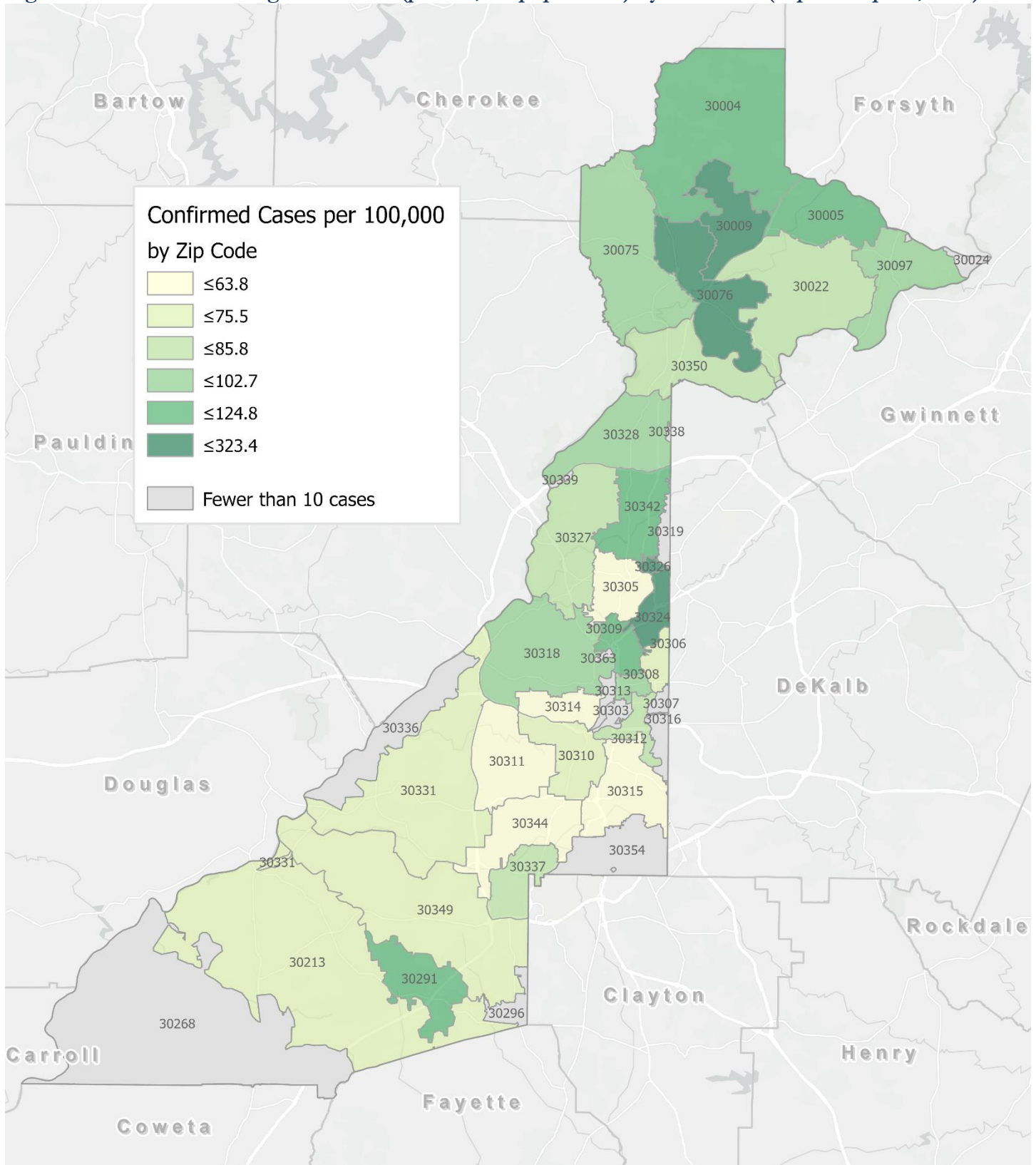
*Data on Polymerase Chain Reaction (PCR) tests only included.

Fig. 5. Density Map – New COVID 19 Diagnoses (Sept 4 – Sept 18, 2020) in Fulton County



New COVID-19 cases: Cases diagnosed in most recent 14 days (based on reported dates of positive sample collection). To allow for lag in reporting results of positive cases from samples collected in the immediate past 7 days, data used for incident diagnoses analyses are moved back by one week. Map reflects new COVID-19 cases diagnosed between Sept 4th and Sept 18th, 2020 across Fulton County.

Fig. 6. New COVID-19 Diagnoses Rates (per 100,000 population) by ZIP Code (Sept 4– Sept 18, 2020)



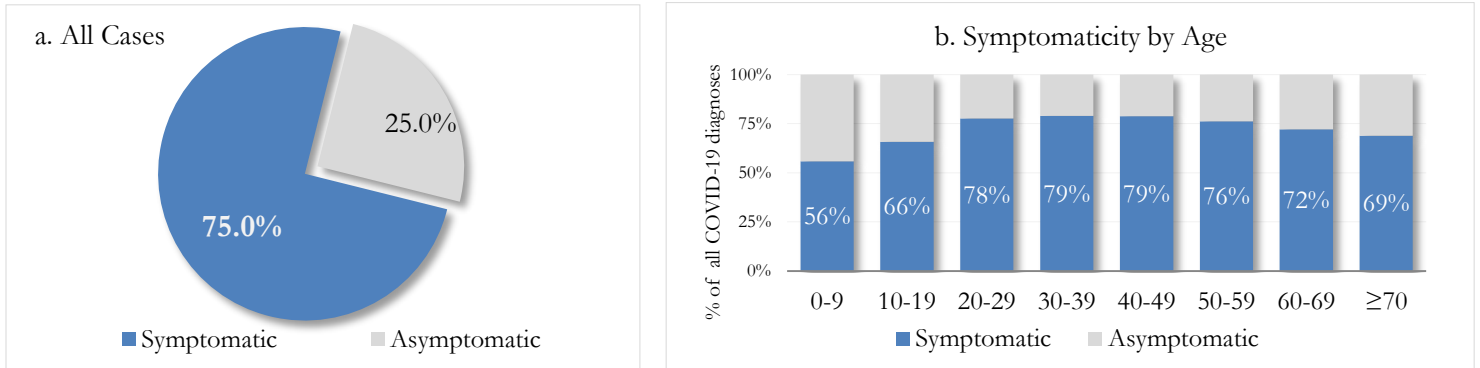
*Rates shown are per 100,000 populations.

New COVID-19 cases: Cases diagnosed in most recent 14 days (based on reported dates of positive sample collection). To allow for lag in reporting results of positive cases from samples collected in the immediate past 7 days, data used for incident diagnoses analyses are moved back by one week. Data used excludes outbreak-related cases at long-term care facilities and map shown reflects only the new non-LTCF cases diagnosed between the dates shown in map title. See page 17 for zip code break down table.

REPORTING SYMPTOMS AMONG PERSONS WITH COVID-19 IN FULTON

People with COVID-19 have reported a wide range of symptoms ranging from mild symptoms to severe illness. Symptoms may appear 2-14 days after exposure to the virus. Symptoms reported include: cough, shortness of breath/difficulty breathing, fever, chills, repeated shaking with chills, muscle pain, headache, sore throat, new loss of taste or smell – Centers for Disease Control and Prevention (CDC)
<https://www.cdc.gov/coronavirus/2019-ncov/symptoms-testing/symptoms.html>

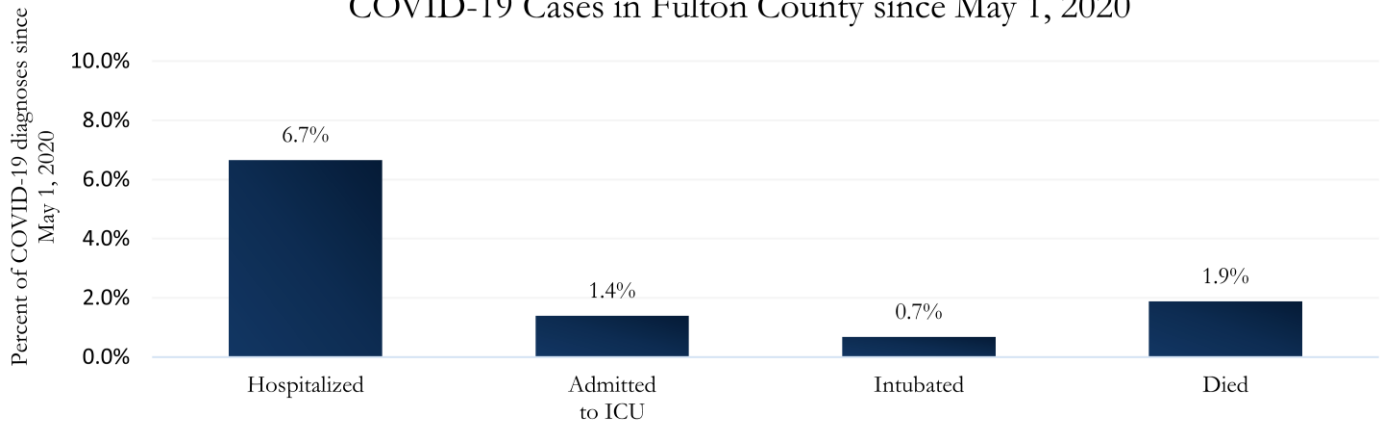
Fig. 7a & b. Total Proportion Reporting Symptoms in Fulton County



COVID-19 cases who have been case interviewed or had medical charts reviewed as of 9/25/20 only. n = 17,633

COVID-19 HOSPITALIZATIONS, ICU ADMISSIONS AND DEATHS IN FULTON

Fig. 8. Hospitalizations, ICU Admissions, Intubations, and Deaths among COVID-19 Cases in Fulton County since May 1, 2020



DEMOGRAPHIC DISTRIBUTIONS – COVID 19 CASES AND DEATHS

A. Distribution of COVID-19 cases by gender, age, and race in Fulton County by Fulton Region

	North Fulton Cities ¹ Count (%)	Atlanta Count (%)	South Fulton Cities ² Count (%)	Unknown City Count (%)	All Fulton Count (%)
Total COVID-19 cases	7533	11559	5421	2778	27291
Gender: Female	3844 (51.0%)	5642 (48.8%)	2997 (55.3%)	1392 (50.1%)	13875 (50.8%)
Male	3518 (46.7%)	5464 (47.3%)	2264 (41.8%)	1291 (46.5%)	12537 (45.9%)
Unknown*	171 (2.3%)	453 (3.9%)	160 (3.0%)	95 (3.4%)	879 (3.2%)
Age: 0-9	255 (3.4%)	207 (1.8%)	164 (3.0%)	69 (2.5%)	695 (2.5%)
10-19	1147 (15.2%)	777 (6.7%)	382 (7.0%)	202 (7.3%)	2508 (9.2%)
20-29	1654 (22.0%)	3391 (29.3%)	1068 (19.7%)	722 (26.0%)	6835 (25.0%)
30-39	1158 (15.4%)	2500 (21.6%)	1129 (20.8%)	569 (20.5%)	5356 (19.6%)
40-49	1180 (15.7%)	1524 (13.2%)	1005 (18.5%)	438 (15.8%)	4147 (15.2%)
50-59	1069 (14.2%)	1269 (11.0%)	739 (13.6%)	348 (12.5%)	3425 (12.5%)
60-69	555 (7.4%)	858 (7.4%)	498 (9.2%)	218 (7.8%)	2129 (7.8%)
≥70	509 (6.8%)	992 (8.6%)	433 (8.0%)	203 (7.3%)	2137 (7.8%)
Unknown*	<10	41 (0.4%)	<10	<10	59 (0.2%)
Race: Asian, NH	263 (3.5%)	183 (1.6%)	17 (0.3%)	56 (2.0%)	519 (1.9%)
Black, NH	761 (10.1%)	5169 (44.7%)	3612 (66.6%)	864 (31.1%)	10406 (38.1%)
White, NH	2784 (37.0%)	2382 (20.6%)	221 (4.1%)	632 (22.8%)	6019 (22.1%)
Hispanic	1464 (19.4%)	715 (6.2%)	442 (8.2%)	312 (11.2%)	2933 (10.7%)
Other, NH	290 (3.8%)	379 (3.3%)	141 (2.6%)	104 (3.7%)	914 (3.3%)
Unknown*	1971 (26.2%)	2731 (23.6%)	988 (18.2%)	810 (29.2%)	6500 (23.8%)

*Unknown included cases not yet interviewed.

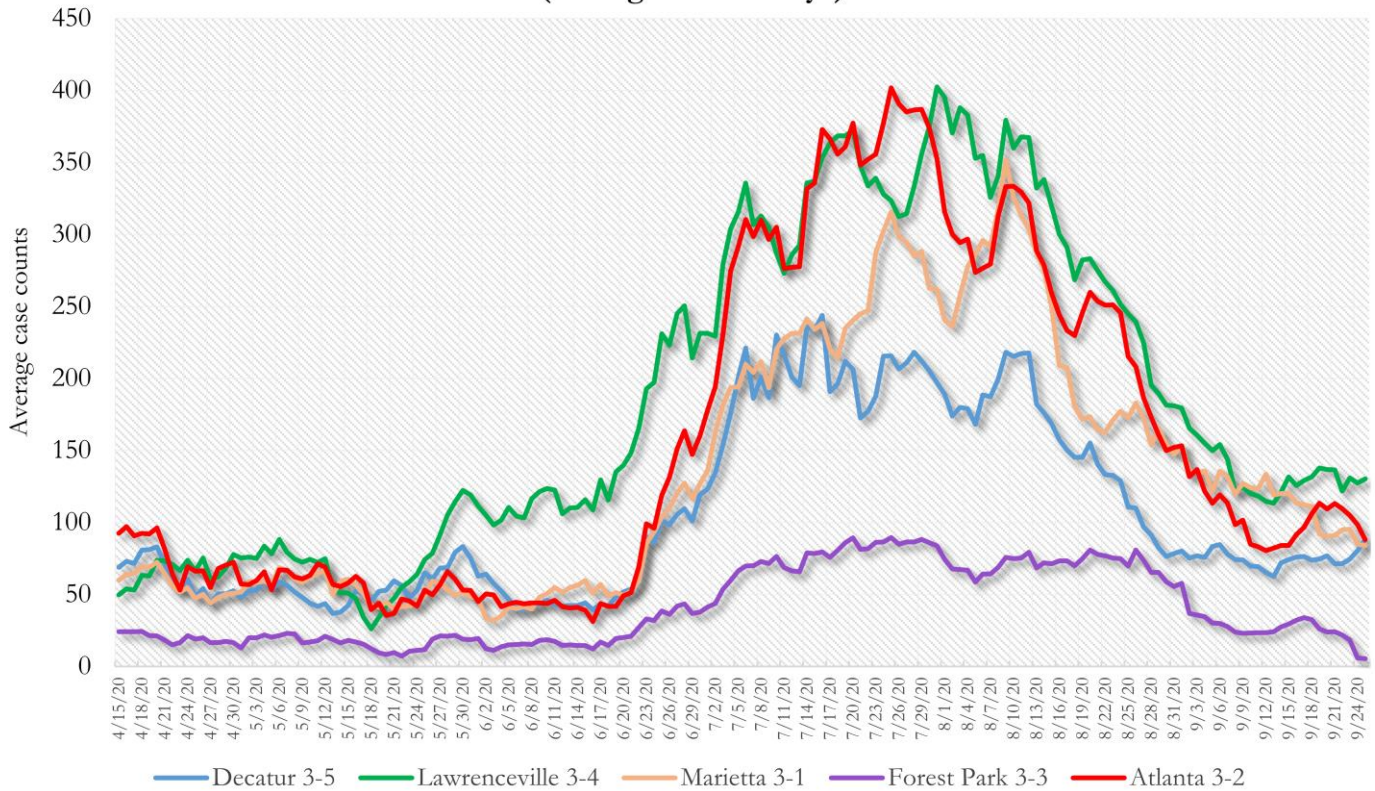
B. Distribution of COVID-19 deaths by gender, age, and race in Fulton County by Fulton Region

	North Fulton Cities ¹ Count (%)	Atlanta Count (%)	South Fulton Cities ² Count (%)	Unknown City Count (%)	All Fulton Count (%)
Total COVID-19 deaths	119	268	141	43	571
Gender: Female	53 (44.5%)	117 (43.7%)	71 (50.4%)	25 (58.1%)	266 (46.6%)
Male	66 (55.5%)	151 (56.3%)	70 (49.6%)	18 (41.9%)	305 (53.4%)
Unknown	0	0	0	0	0
Age: ≤ 29	0	<10	<10	0	<10
30-39	<10	<10	<10	<10	12 (2.1%)
40-49	<10	<10	10 (7.1%)	<10	26 (4.6%)
50-59	<10	24 (9.0%)	18 (12.8%)	<10	49 (8.6%)
60-69	15 (12.6%)	50 (18.7%)	32 (22.7%)	<10	101 (17.7%)
≥70	92 (77.3%)	175 (65.3%)	77 (54.6%)	34 (79.1%)	378 (66.2%)
Unknown	0	<10	0	0	0
Race: Asian, NH	<10	<10	<10	<10	10 (1.8%)
Black, NH	22 (18.5%)	230 (85.8%)	120 (85.1%)	22 (51.2%)	394 (69.0%)
White, NH	81 (68.1%)	30 (11.2%)	13 (9.2%)	18 (41.9%)	142 (24.9%)
Hispanic	11 (9.2%)	<10	<10	<10	21 (3.7%)
Other, NH	0	<10	<10	0	<10
Unknown	<10	<10	0	0	<10

¹Includes all Fulton County cities north of Atlanta metro (Alpharetta, Milton, Johns Creek, Roswell, Sandy Springs, Mountain Park) ²Includes all cities south of Atlanta (College Park, Chattahoochee Hills, East Point, Hapeville, Palmetto, South Fulton, Fairburn, Union City). **Note:** All data reported are preliminary and subject to change. This table includes data on all presumed COVID-19 deaths and is subject to change as GaDPH completes cause of death confirmation processes.

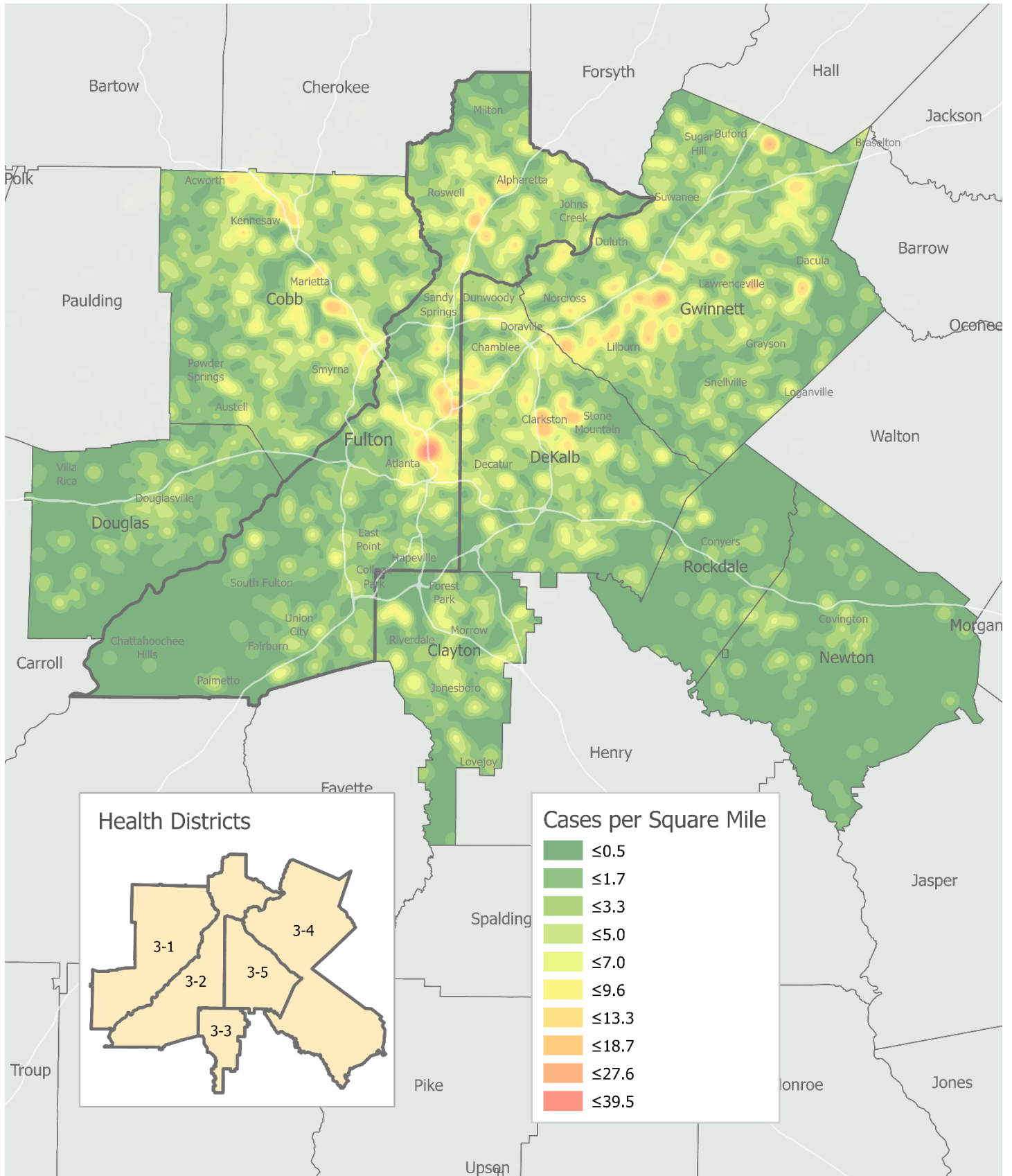
COVID-19 CASE TRENDS IN FULTON AND SURROUNDING DISTRICTS

**Fig. 9. Daily Case Counts for Atlanta Metro Districts
(Averaged over 7 days)**



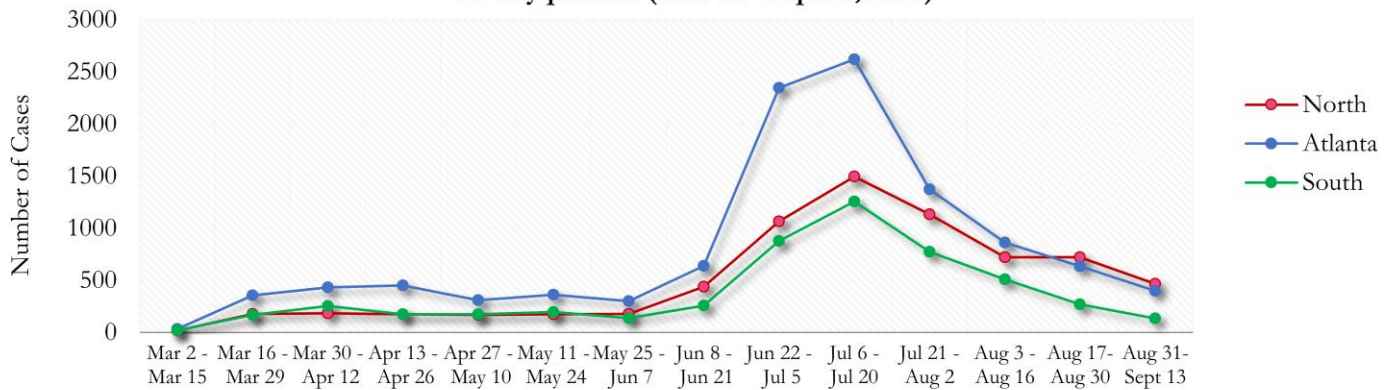
*Graph shows the average number of cases calculated from the daily cumulative case counts in the metro Atlanta districts. Increases in daily cumulative case counts may include cases diagnosed earlier during the pandemic but were only recently reported to the state as cases diagnosed belonging to these districts.

Fig. 10. COVID-19 Cases in Fulton County and Surrounding Districts (Sept 4 – Sept 18, 2020)



TRENDS IN COVID-19 CASES AMONG DEMOGRAPHIC GROUPS (14 DAY PERIODS)

Fig. 11. Trends in Geographic distribution of COVID -19 Diagnoses in Fulton County by 14-day periods (Mar 02 - Sept 13, 2020)



The Northern region now accounts for a majority of cases in Fulton County.

*North - Includes all Fulton cities north of Atlanta (Alpharetta, Milton, Johns Creek, Roswell, Sandy Springs, Mountain Park)

*South - Includes all Fulton cities south of Atlanta (College Park, Chattahoochee Hills, East Point, Hapeville, Palmetto, South Fulton, Fairburn, and Union City)

Fig. 12. Trends in Gender Distribution of COVID -19 Diagnoses in Fulton County by 14-day periods (Mar 02 - Sept 13, 2020)

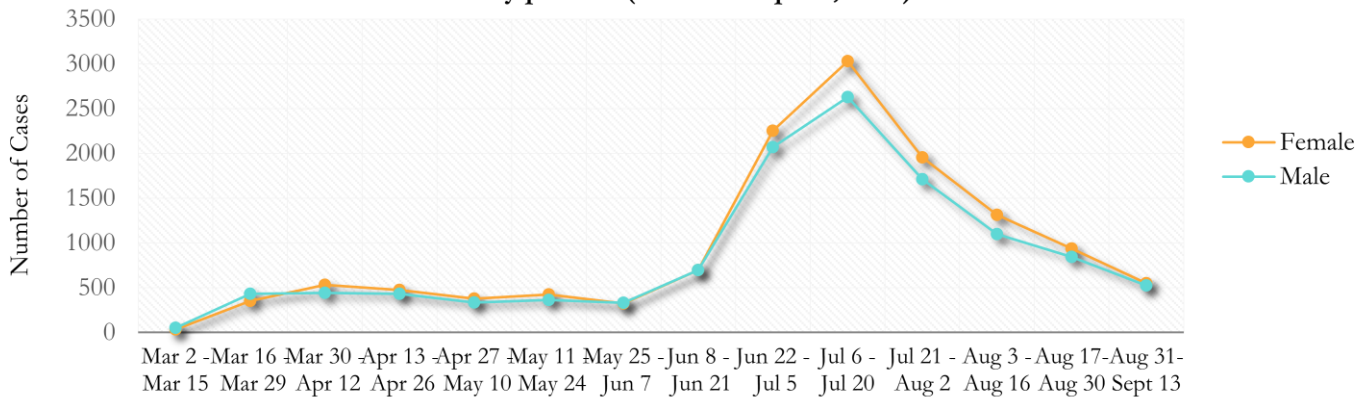
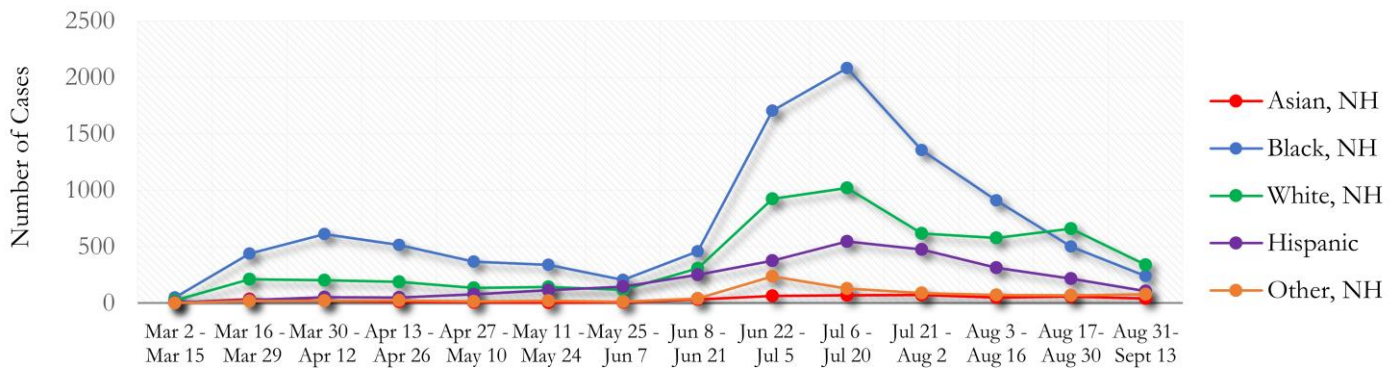


Fig. 13. Trends in Racial Distribution of COVID -19 Diagnoses in Fulton County by 14-day periods (Mar 02 - Sept 13, 2020)



About 27% of COVID cases are missing data on patient race and ethnicity. The majority of diagnoses made in the past two weeks were White-NH (42%) rather than Black-NH (30%).

Fig. 14. Racial Distribution of COVID -19 Cases in Fulton County by 14-day periods (Mar 02 - Sept 13, 2020)

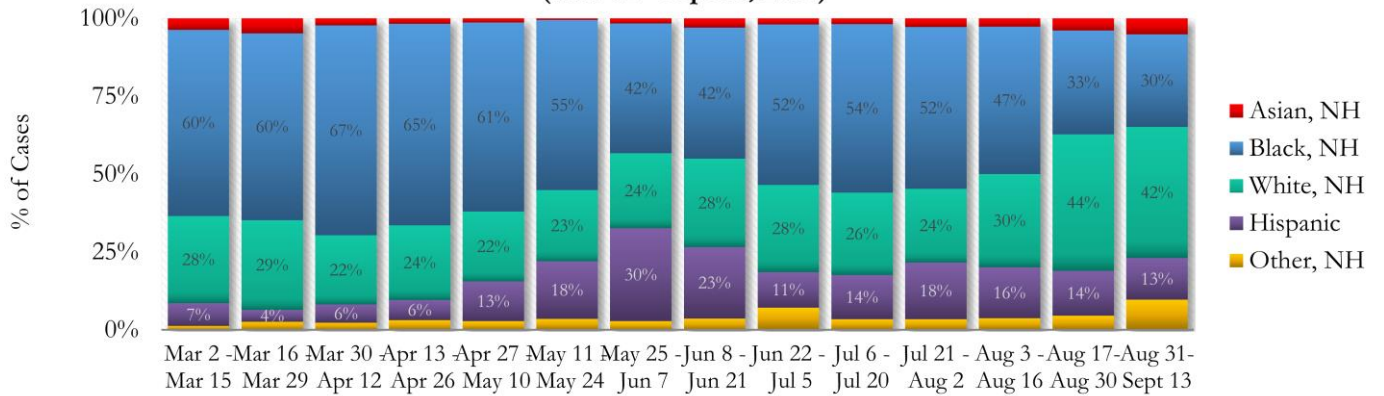
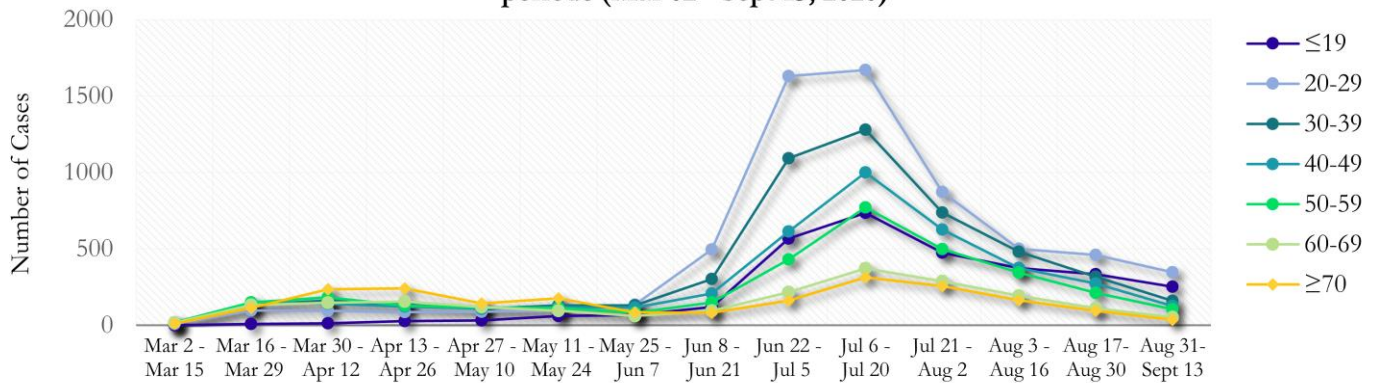
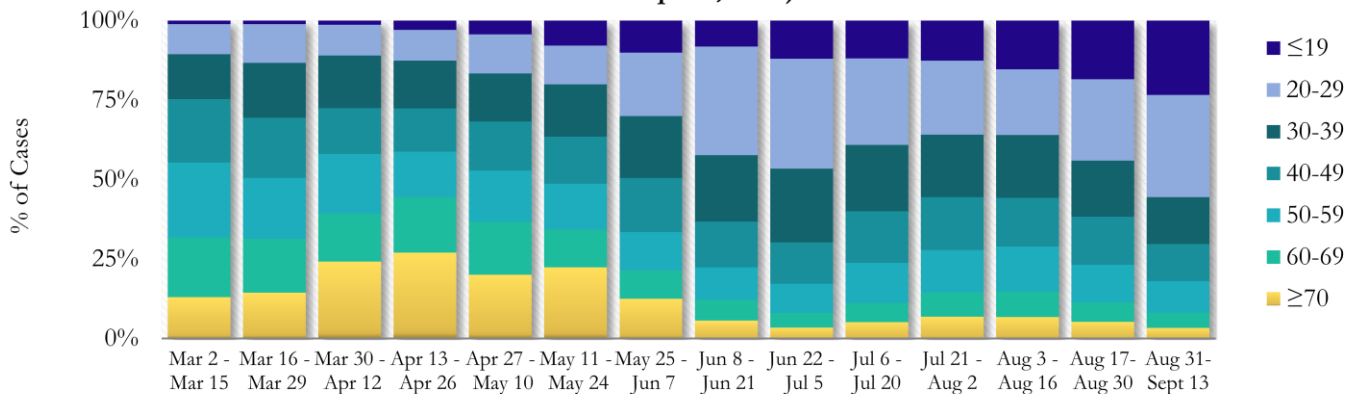


Fig. 15. Trends in Age Distribution of COVID -19 Diagnoses in Fulton County by 14-day periods (Mar 02 - Sept 13, 2020)



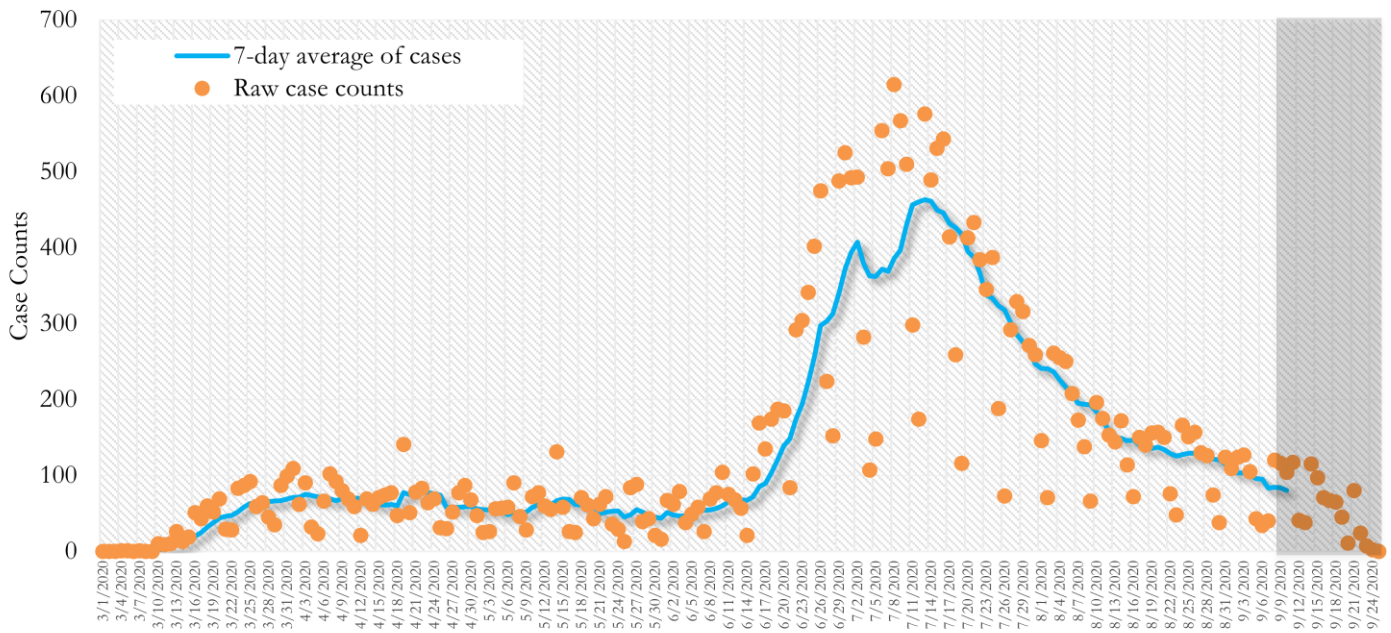
Earlier (March-May 2020) large proportions of reported cases were among persons aged 60 and older. However, starting in June, a higher number of cases were among persons aged between 20-29 years.

Fig. 16. Age Distribution of COVID -19 Cases in Fulton County by 14-day periods (Mar 02 - Sept 13, 2020)



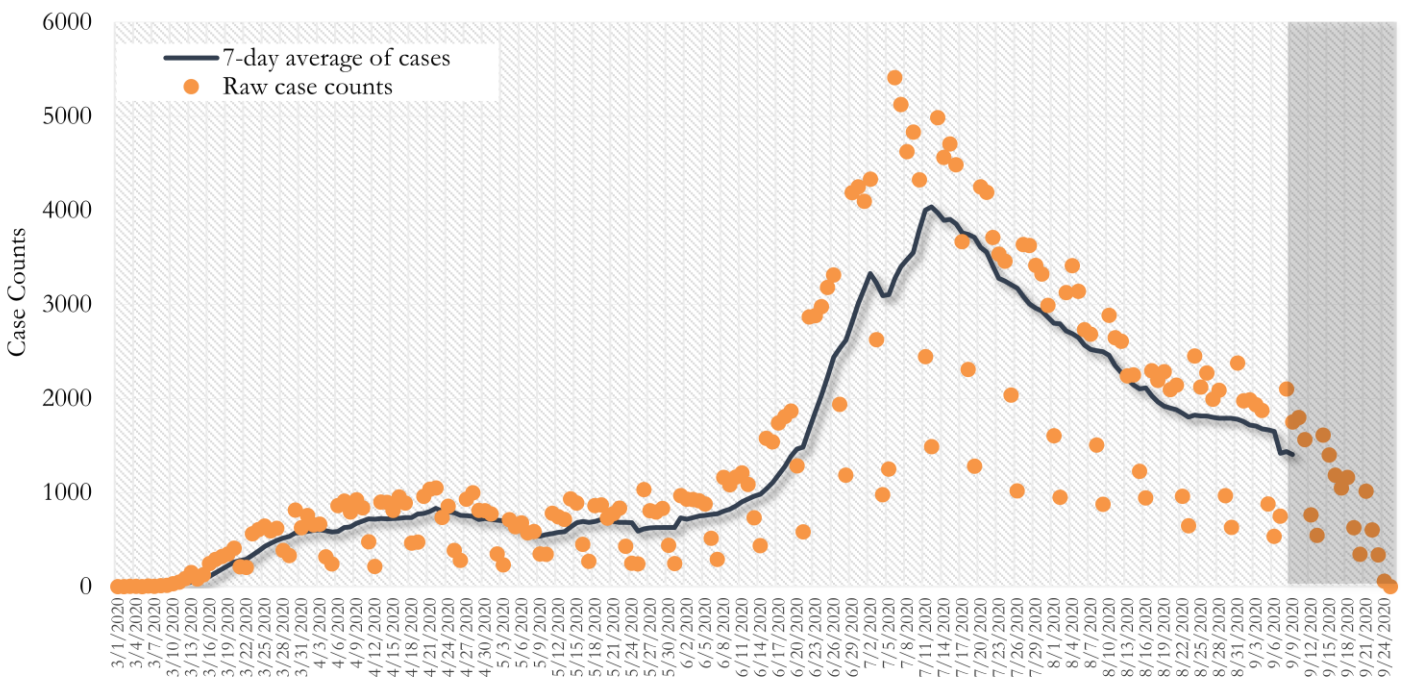
TRENDS IN COVID-19 CASES, HOSPITALIZATIONS AND DEATHS (7-DAY MOVING AVE.)

Fig. 17. New COVID-19 Cases in Fulton County Daily (Averaged over 7 days)



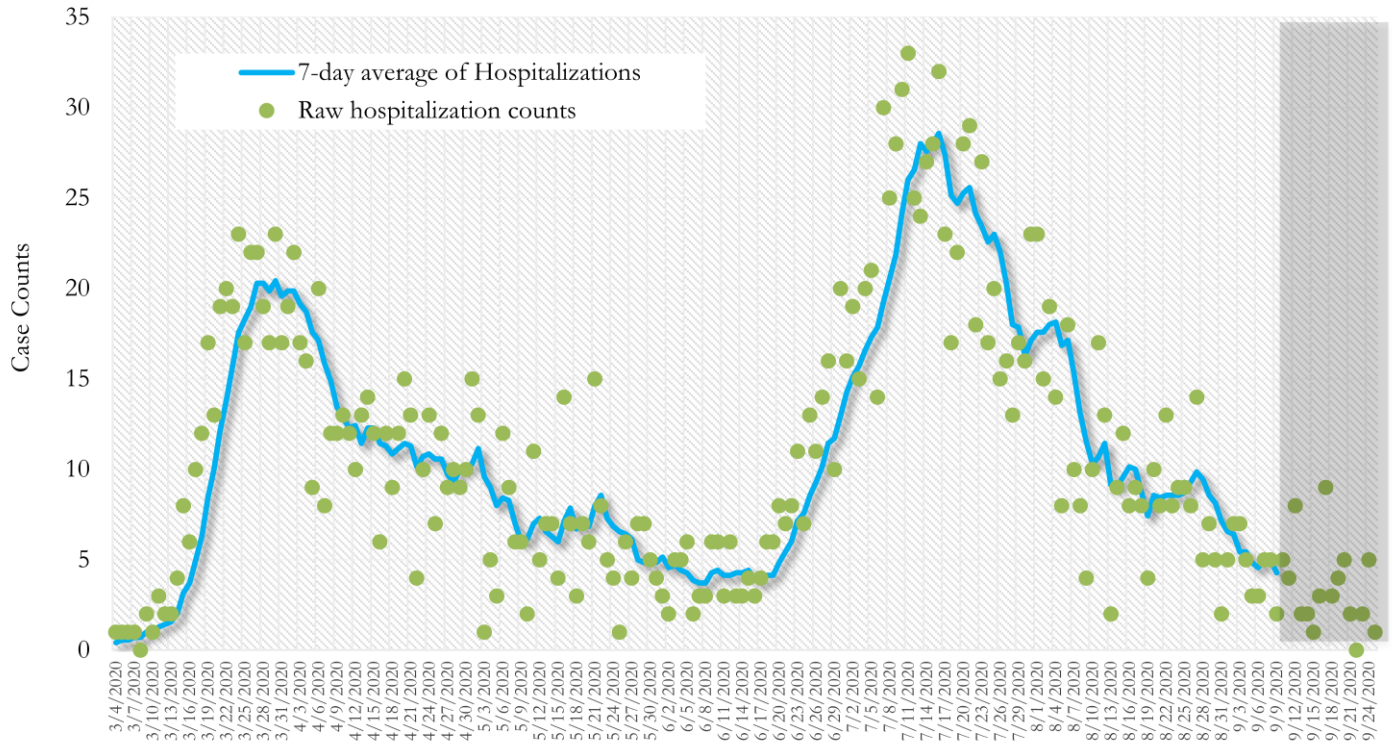
*Date of collection of first positive sample used (report creation date used where sample collection date is missing). Graph above reflects the trend in COVID-19 diagnosis. Due to the high volume of testing in recent weeks, there have been delays in reporting lab results. Thus, the trend is subject to change as more lab results get added to the state surveillance database.

Fig. 18. New COVID-19 Cases in Georgia State Daily (Averaged over 7 days)



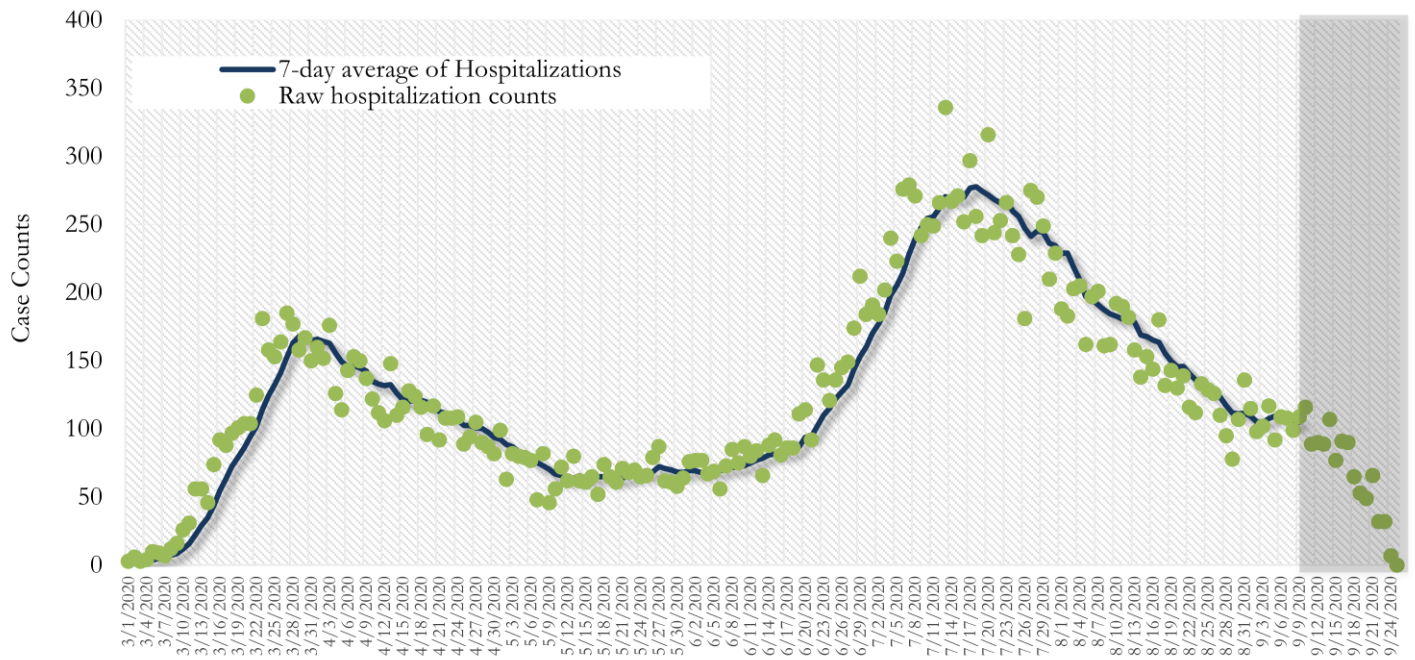
*Date of collection of first positive sample used (report creation date used where sample collection date is missing). Graph above reflects the trend in COVID-19 diagnosis. Due to the high volume of testing in recent weeks, there have been delays in reporting lab results. Thus, the trend is subject to change as more lab results get added to the state surveillance database.

Fig. 19. COVID-19 Hospitalizations in Fulton County Daily (Averaged over 7 days)



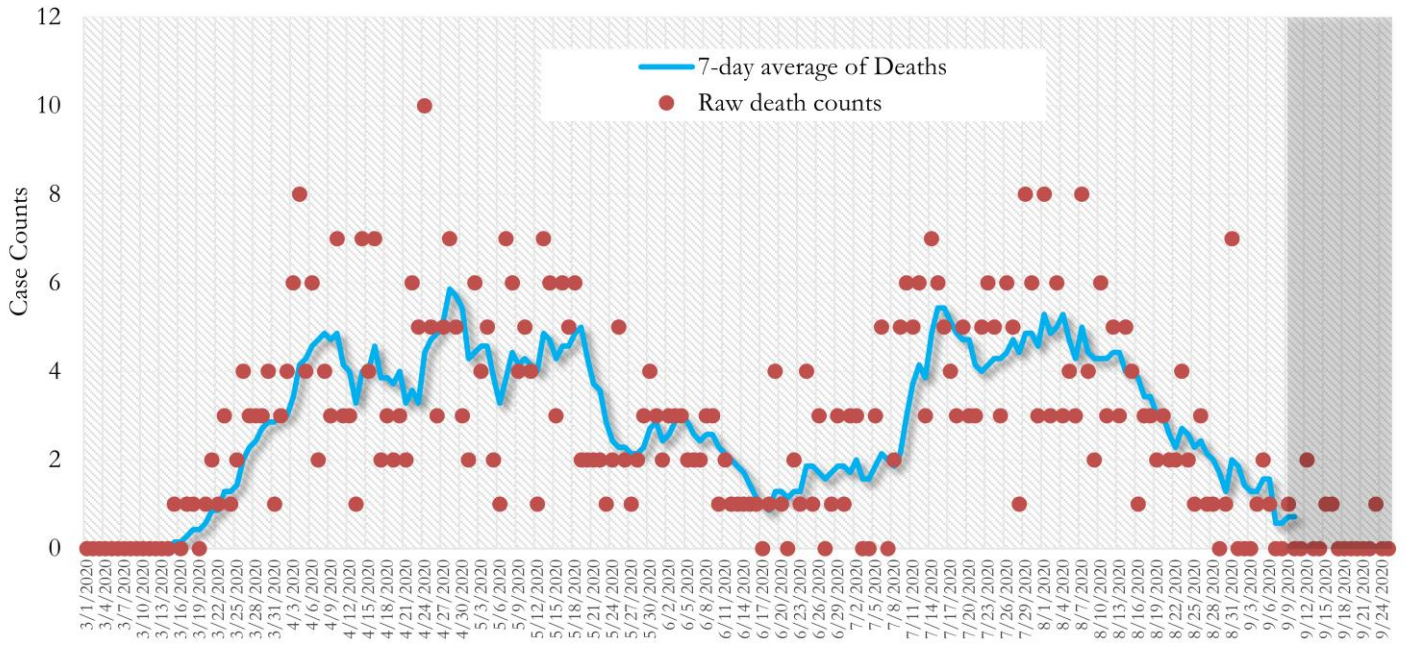
*Reported date of hospital admission used. Graph above reflects the trend in COVID-19 hospitalizations. Due to the high volume of new cases being added daily, there have been delays in reporting hospitalization data. Thus, the trend is likely to change as more hospitalization data is reported in the state surveillance database.

Fig. 20. COVID-19 Hospitalizations in Georgia State Daily (Averaged over 7 days)



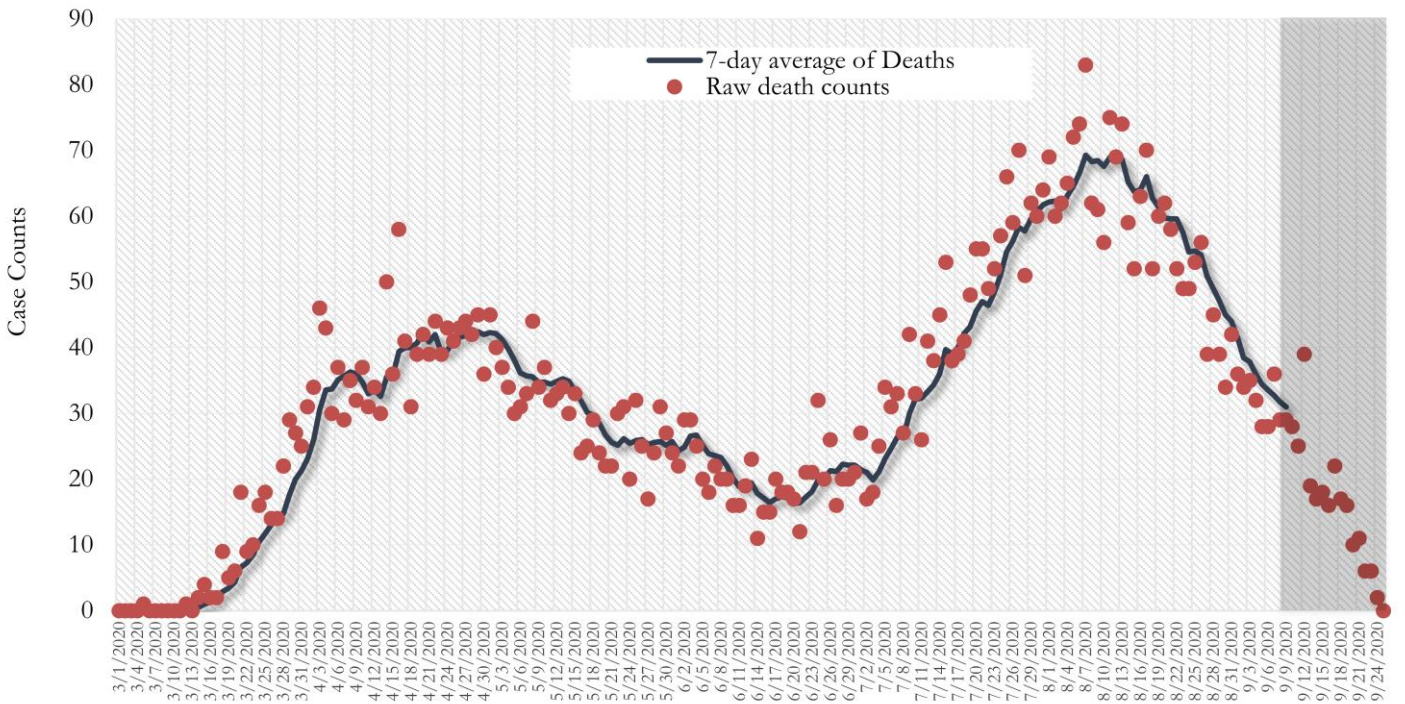
*Reported date of hospital admission used. Graph above reflects the trend in COVID-19 hospitalizations. Due to the high volume of new cases being added daily, there have been delays in reporting hospitalization data. Thus, the trend is likely to change as more hospitalization data is reported in the state surveillance database.

Fig. 21. COVID-19 Deaths in Fulton County Daily (Averaged over 7 days)



* Reported date of death used. Graph above reflects the trend in deaths attributed to COVID-19. The trend is likely to change as more data on deaths among persons with COVID-19 is reported in the state surveillance database.

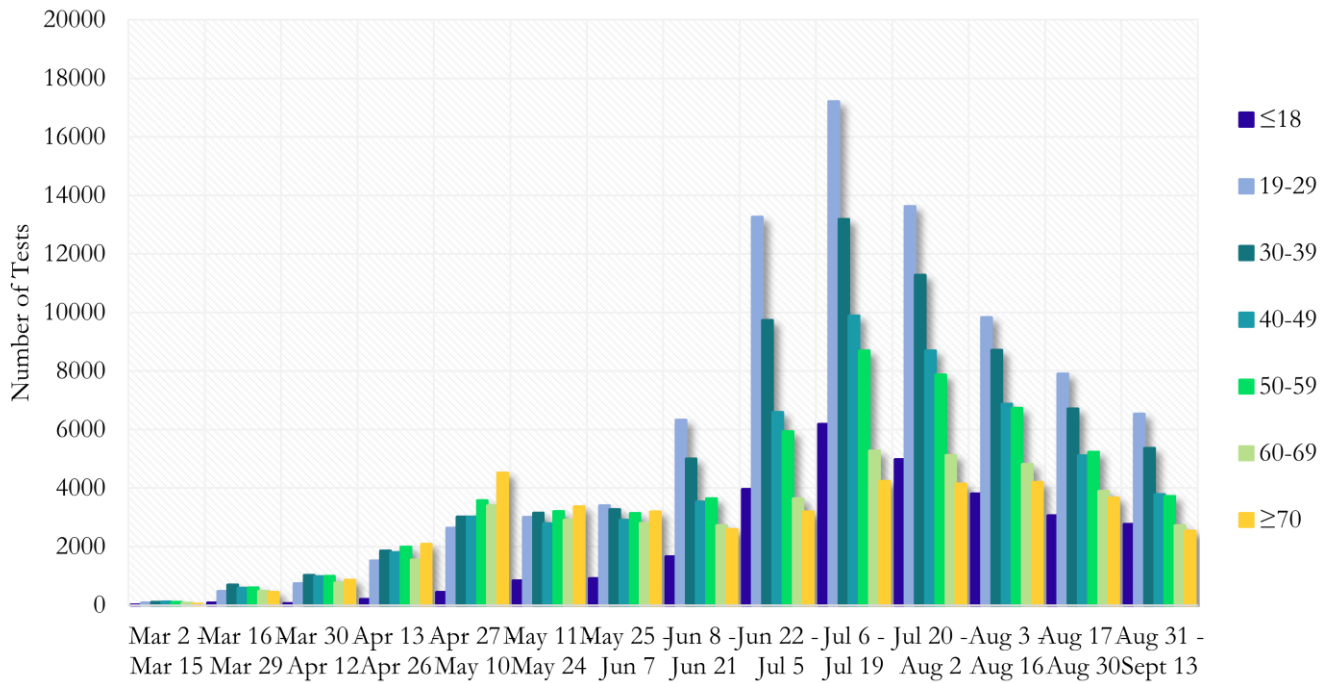
Fig. 22. COVID-19 Deaths in Georgia State Daily (Averaged over 7 days)



* Reported date of death used. Graph above reflects the trend in deaths attributed to COVID-19. The trend is likely to change as more data on deaths among persons with COVID-19 is reported in the state surveillance database.

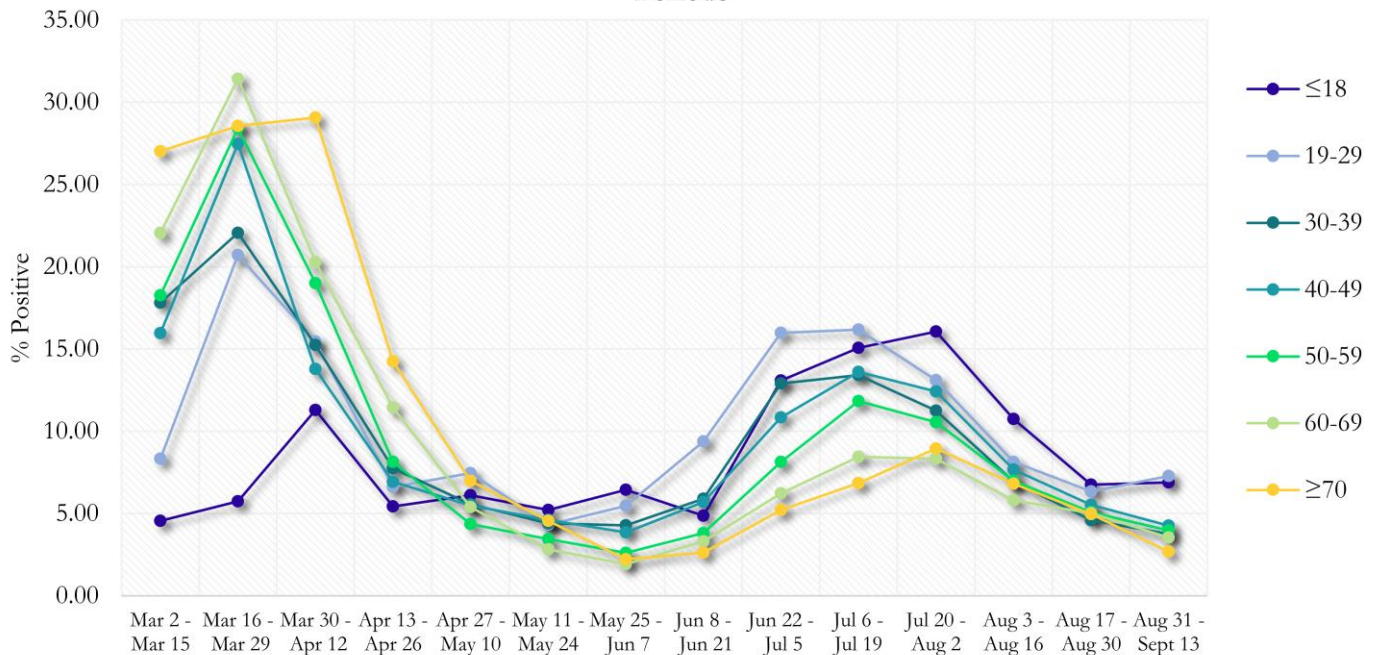
COVID-19 TESTING AND POSITIVITY IN FULTON COUNTY BY AGE AND RACE

Fig. 23. COVID-19 Tests by Age in Fulton County by 14-day Periods



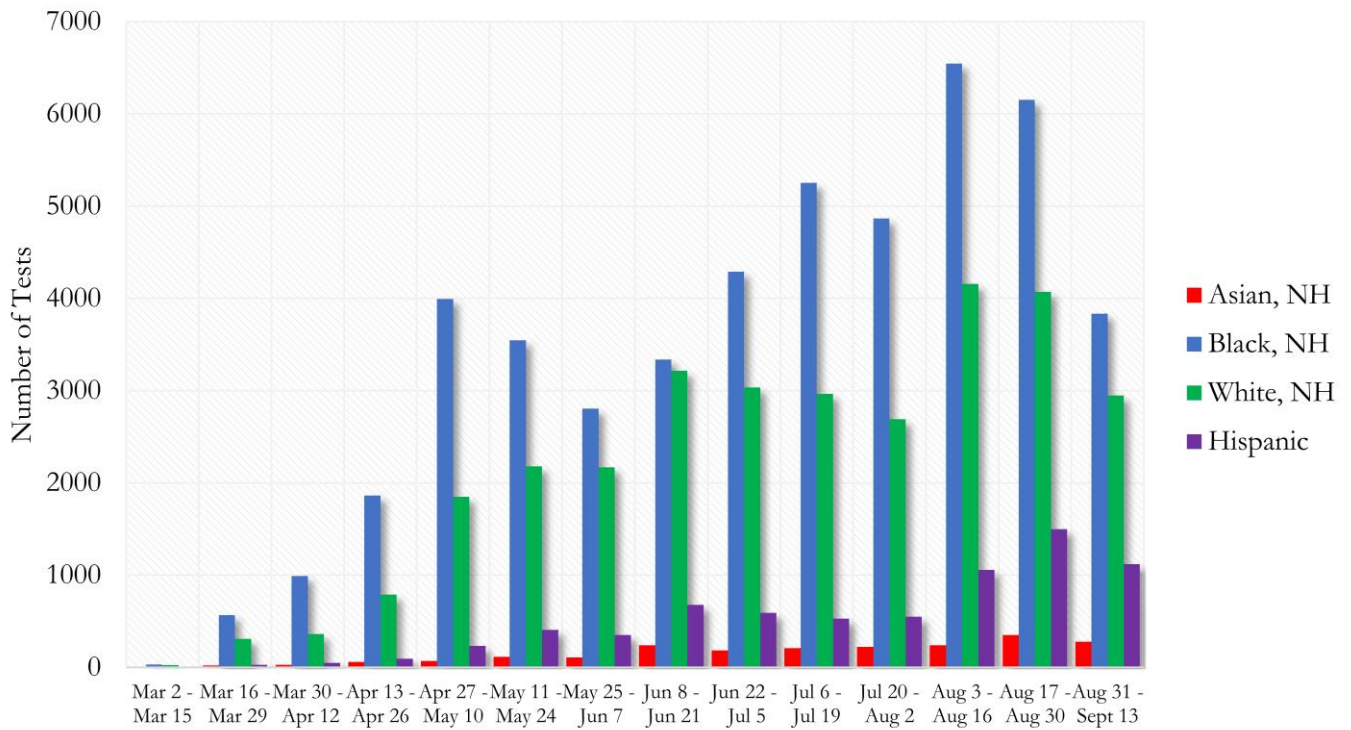
*Data on Polymerase Chain Reaction (PCR) tests only included.

Fig. 24. Percent Positive COVID-19 Tests by Age Group in Fulton County by 14-day Periods



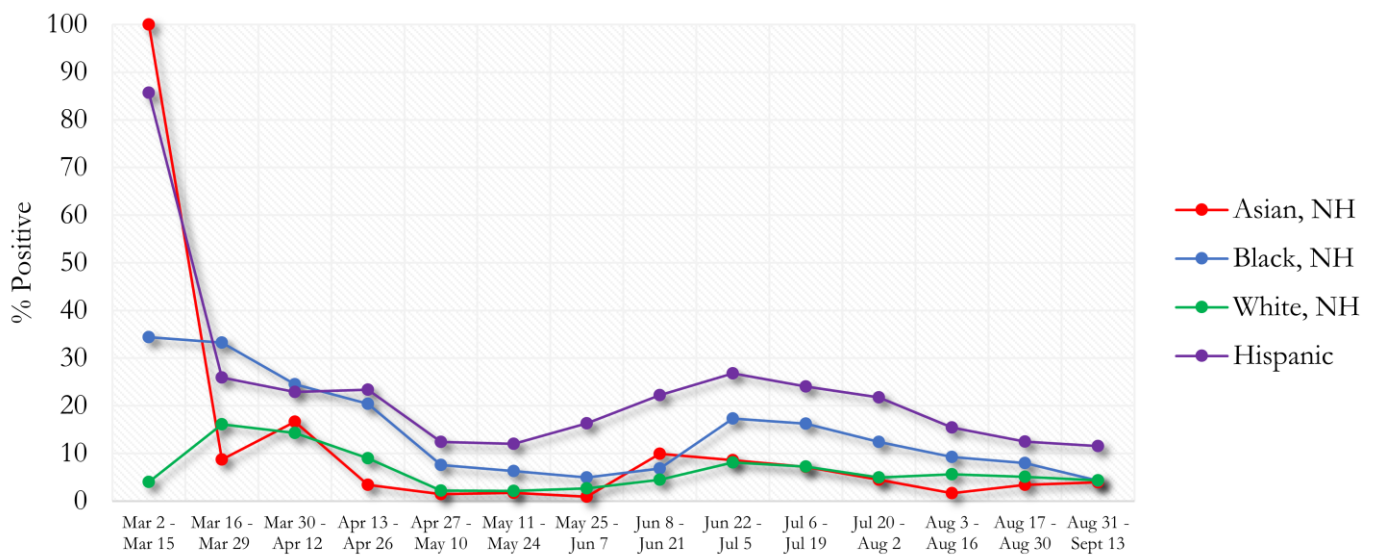
*Data on Polymerase Chain Reaction (PCR) tests only included.

Fig. 25. COVID-19 Tests by Race and Ethnicity in Fulton County by 14-day Periods



*Data on Polymerase Chain Reaction (PCR) tests only included.

Fig. 26. Percent Positive COVID-19 Tests by Race and Ethnicity in Fulton County by 14-day Periods



*Data on Polymerase Chain Reaction (PCR) tests only included.

COVID-19 CASE COUNTS BY ZIP CODE

	Prior (9/22/20)	Current Total (9/25/20)		New Cases (Period: 8/21/20 – 9/18/20) ¹		
	Count	Count	%	1st 14 days (Aug 21– Sept 3)	Last 14 d. (Sept 4 – Sept 18)	% change ²
All Fulton	27097	27291	100%	1695	1225	↓ 27.7%
30004	1032	1001	3.67%	125	68	↓ 45.6%
30005	542	534	1.96%	67	45	↓ 32.8%
30009	449	457	1.67%	62	46	↓ 25.8%
30022	1150	1171	0.78%	102	70	↓ 31.4%
30023	<10	<10	<0.1%	<10	0	↓ 100.0%
30024	15	17	<0.1%	<10	<10	-
30075	1058	1062	3.89%	128	69	↓ 46.1%
30076	1042	1055	3.87%	87	83	↓ 4.6%
30080	<10	<10	<0.1%	0	0	-
30097	268	271	0.99%	22	29	↑ 31.8%
30098	-	-	-	0	0	-
30135	<10	<10	<0.1%	0	<10	-
30138	<10	<10	<0.1%	0	0	-
30139	-	-	-	0	0	-
30213	1027	1036	3.80%	39	33	↓ 15.4%
30268	185	186	0.68%	12	<10	↓ 50.0%
30291	748	758	2.78%	31	32	↑ 3.2%
30296	49	51	0.19%	<10	<10	-
30301	10	10	<0.1%	0	<10	-
30303	366	366	1.34%	<10	<10	-
30305	740	747	2.74%	40	26	↓ 35.0%
30306	332	332	1.22%	24	11	↓ 54.2%
30307	192	190	0.70%	10	<10	↓ 50.0%
30308	491	494	1.81%	57	21	↓ 63.2%
30309	756	773	2.83%	40	50	↑ 25.0%
30310	707	712	2.61%	25	25	-
30311	764	769	2.82%	31	24	↓ 22.6%
30312	763	766	2.81%	29	20	↓ 31.0%
30313	210	214	0.78%	58	10	↓ 82.8%
30314	546	550	2.02%	17	15	↓ 11.8%
30315	836	844	3.09%	46	29	↓ 37.0%
30316	375	378	1.39%	17	14	↓ 17.6%
30318	1614	1636	5.99%	88	62	↓ 29.5%
30319	132	135	0.49%	11	11	-
30321	11	11	<0.1%	0	0	-
30324	876	887	3.25%	36	43	↑ 19.4%
30326	223	226	0.83%	<10	16	↑ 77.8%
30327	525	534	1.96%	39	28	↓ 28.2%
30328	776	790	2.89%	53	41	↓ 22.6%
30331	1701	1708	6.26%	56	53	↓ 5.4%
30334	13	13	<0.1%	0	0	-
30336	81	84	0.31%	0	<10	-
30337	326	330	1.21%	13	12	↓ 7.7%
30338	155	153	0.56%	12	<10	↓ 83.3%
30339	289	281	1.03%	14	<10	↓ 50.0%
30340	34	34	0.12%	<10	0	↓ 100.0%
30341	35	34	0.12%	<10	0	↓ 100.0%
30342	1151	1160	4.25%	68	45	↓ 33.8%
30344	863	876	3.21%	43	23	↓ 46.5%
30345	31	29	0.11%	0	<10	-

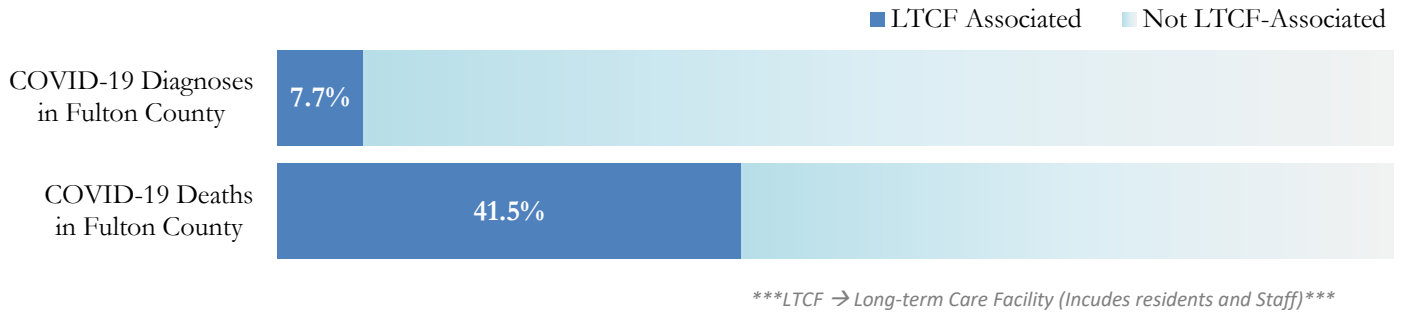
30349	1738	1747	6.40%	56	52	↓ 7.1%
30350	576	589	2.16%	44	40	↓ 9.1%
30354	413	414	1.52%	20	<10	↓ 60.0%
30358	<10	<10	<0.1%	0	0	-
30363	60	60	0.22%	<10	<10	-
30374	31	31	0.11%	0	0	-
30606	<10	<10	<0.1%	0	0	-
31131	<10	<10	<0.1%	<10	0	↓ 100.0%
31150	<10	<10	<0.1%	0	0	-
Unknown	948	750	2.75%	45	27	-

¹**New cases:** Cases diagnosed in most recent 28 days (based on reported dates of positive sample collection). To allow for lag in reporting results of new diagnoses from samples collected in the most recent week, data used for incident diagnoses analyses were moved back by one week. ²**Percent change:** These reflect the percentage increase or decrease of new diagnoses between the 14 days preceding the past 7 days and the 14 days preceding that. Changes in ZIP codes with less than 10 cases in both 2 week intervals are not reported**Data cleaning (either during case interviews or address geo-coding) may lead to reassignment of few cases from one territory to another based on their corrected addresses. These may appear as “decreases” when compared to the previous day’s count. These do not reflect errors in the data collection or analysis process but only reflect the minor day-to-day fluctuations in case counts that arise in an evolving public health database like COVID’s. **Note:** Sharp increases in territorial COVID case counts often reflect new cases diagnosed at long term care facilities located in those territories during facility-wide /mass screening events **All data reported are preliminary and subject to change.**

COVID-19 IN LONG-TERM CARE FACILITIES IN FULTON COUNTY

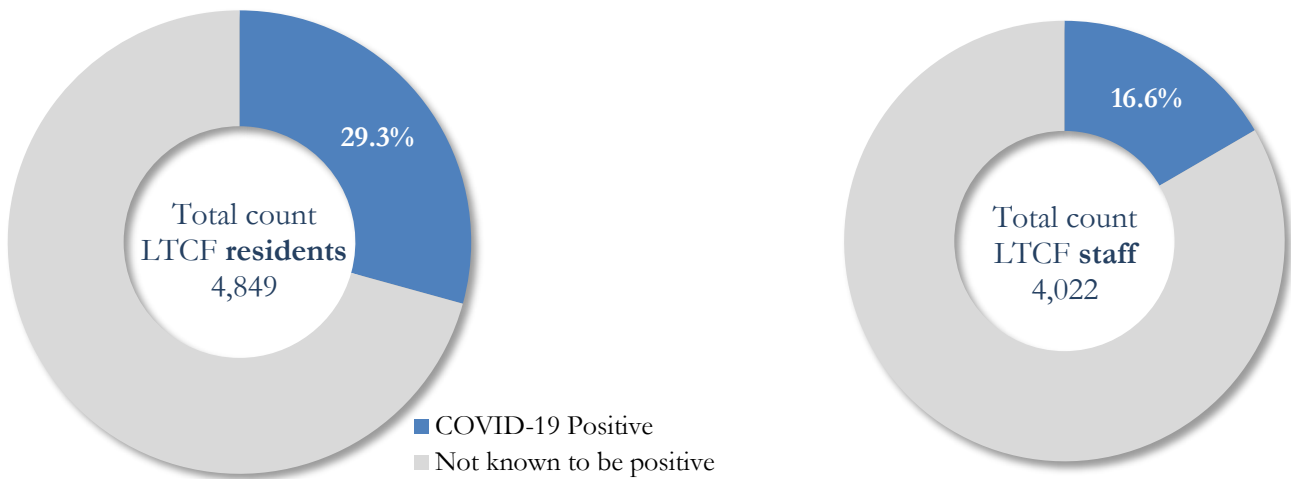
Older persons (aged 65 years and older) and persons who live in nursing homes or other long-term care facilities seem to be at higher risk for developing more serious complications from COVID-19. Extra precautions are recommended for individuals within this risk groups – Centers for Disease Control and Prevention (CDC 2020) <https://www.cdc.gov/coronavirus/2019-ncov/need-extra-precautions/people-at-higher-risk.html>

Fig. 27. COVID-19 Diagnoses and Deaths in Fulton County Associated with Long-Term Care Facilities



COVID-19 POSITIVITY:

Fig. 28. COVID-19 Positivity at 60 reporting Long-Term Care Facilities (LTCF) in Fulton County



COVID-19 Cases, Hospitalizations, and Deaths among 64 reporting Long-Term Care Facilities in Fulton County

	LTCF Residents (n=4,849)			LTCF Staff (n=4,022)		
	Cases	Hospitalizations	Deaths	Cases	Hospitalizations	Deaths
Average (count per fac.) ¹	22	5	4	10	1	<0.1
Median (count per fac.) ¹	9	1	1	7	0	0
Lowest counts	0	0	0	0	0	0
Highest counts	138	48	30	66	8	2
Total Count	1420 (29.3%) ^a	304 (21.4%) ^b	232 (16.3%) ^b	668 (16.6%) ^a	32 (4.8%) ^b	5 (<1.0%) ^b

^a Percentage shown reflects proportion of total residents/staff tested who were positive (i.e. COVID-19 Positivity). | ^b Percentages shown are proportions of persons residents/staff diagnosed with COVID-19 who were hospitalized or died after diagnoses.