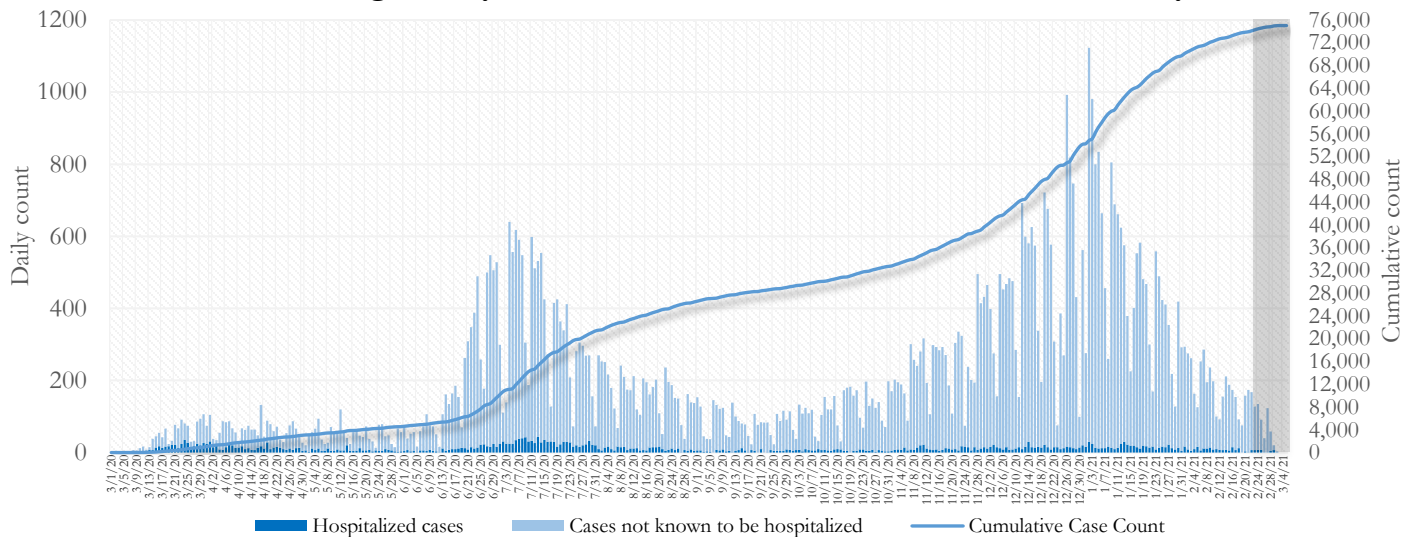


## SUMMARY

- As of March 5, 2021, Fulton County has recorded **75,011 cases of the 2019 novel coronavirus (COVID-19)** and **1,083 confirmed COVID-19 deaths**. 113 deaths are currently being reviewed by GA DPH to confirm cause of death.
- Of **2,192 new diagnoses** made between February 13 and February 26, the central portion of the county (Atlanta) accounted for 44% while the northern and southern parts accounted for 32% and 21% respectively.
- By city, new COVID-19 case rates range from 145.9 per 100,000 persons (Johns Creek) to 313.9 per 100,000 persons (Chattahoochee Hills). [**Fulton County Diagnoses Rates (per 100,000 persons): Cumulative – 6824.3; Incidence – 199.4**]. See map showing incident case rate by ZIP code on Pg.12.
- Among all persons diagnosed with COVID-19 in Fulton County since August 1, **4.0% required hospitalization and 1.2% died**.
- Of all testing done in Fulton County between February 15 and February 28, the **percent positivity rate was 6.0%**.

**Fig 1. Daily and Cumulative COVID-19 cases in Fulton County, GA**



\*Counts shown reflect the number of confirmed cases as of 9:00 pm on 3/4/21 using the date of first positive sample collection. Where date of sample collection was not available or missing, the date of report creation in GA SENDSS was used instead. **Note:** Delays in data reporting may cause changes in data counts, particularly in the shaded portion. Data throughout this report are preliminary and subject to ongoing data cleaning processes, and thus are subject to change.

## DISTRIBUTION OF COVID-19 CASES BY REGION

**New cases:** 44% of the new COVID-19 cases in the past 2 weeks occurred in Atlanta while 32% and 21% occurred in the Northern and Southern regions of the county respectively.

Fulton Region	% Cumulative count	% New cases*
Atlanta	42.5%	44.3%
North <sup>1</sup>	34.2%	32.4%
South <sup>2</sup>	19.6%	21.0%
Unincorporated/Unknown	3.7%	2.3%

<sup>1</sup>Includes all Fulton County cities north of Atlanta (Alpharetta, Johns Creek, Milton, Mountain Park, Roswell, Sandy Springs,) |<sup>2</sup>Includes all cities south of Atlanta (Chattahoochee Hills, College Park, East Point, Fairburn, Hapeville, Palmetto, South Fulton, and Union City) \***New cases:** Cases diagnosed in the past 2 weeks only (between 2/13/21 – 2/26/21).

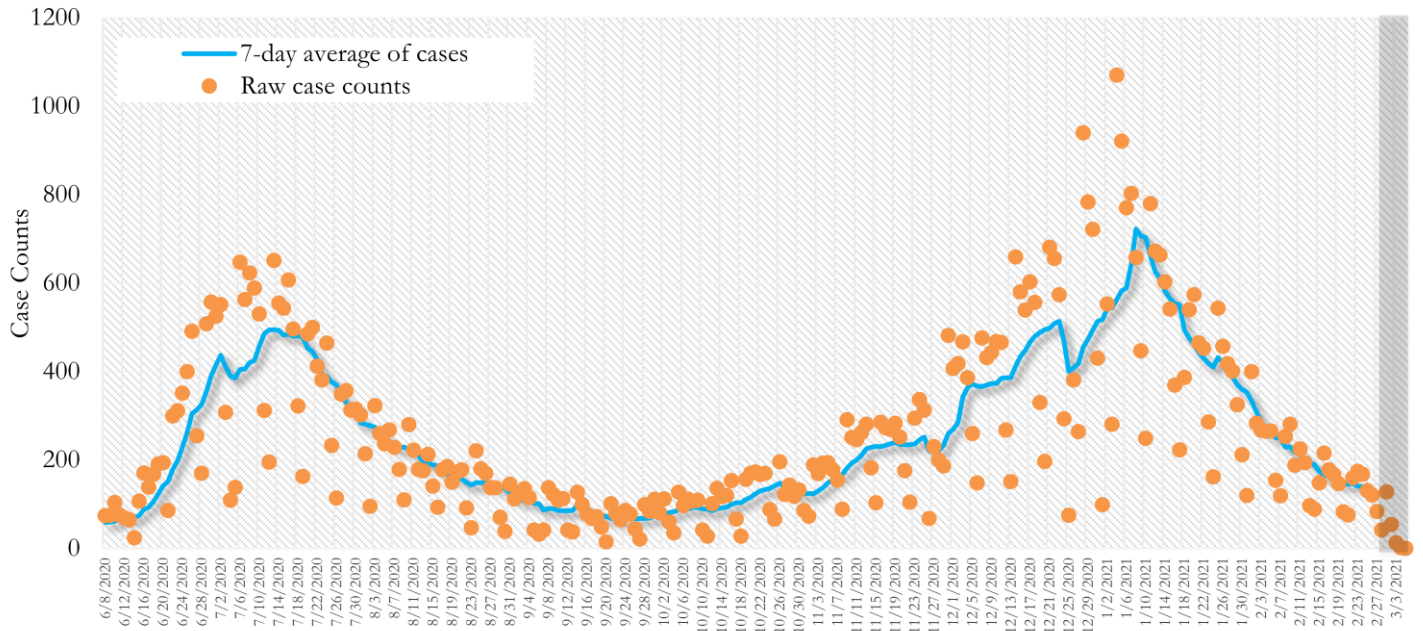
**In the recent two week reporting period (2/13-2/26), there were fewer new cases of COVID-19 in Fulton County than the previous two weeks (1/30-2/12).**



\*Delayed a week to account for testing results turnaround time.

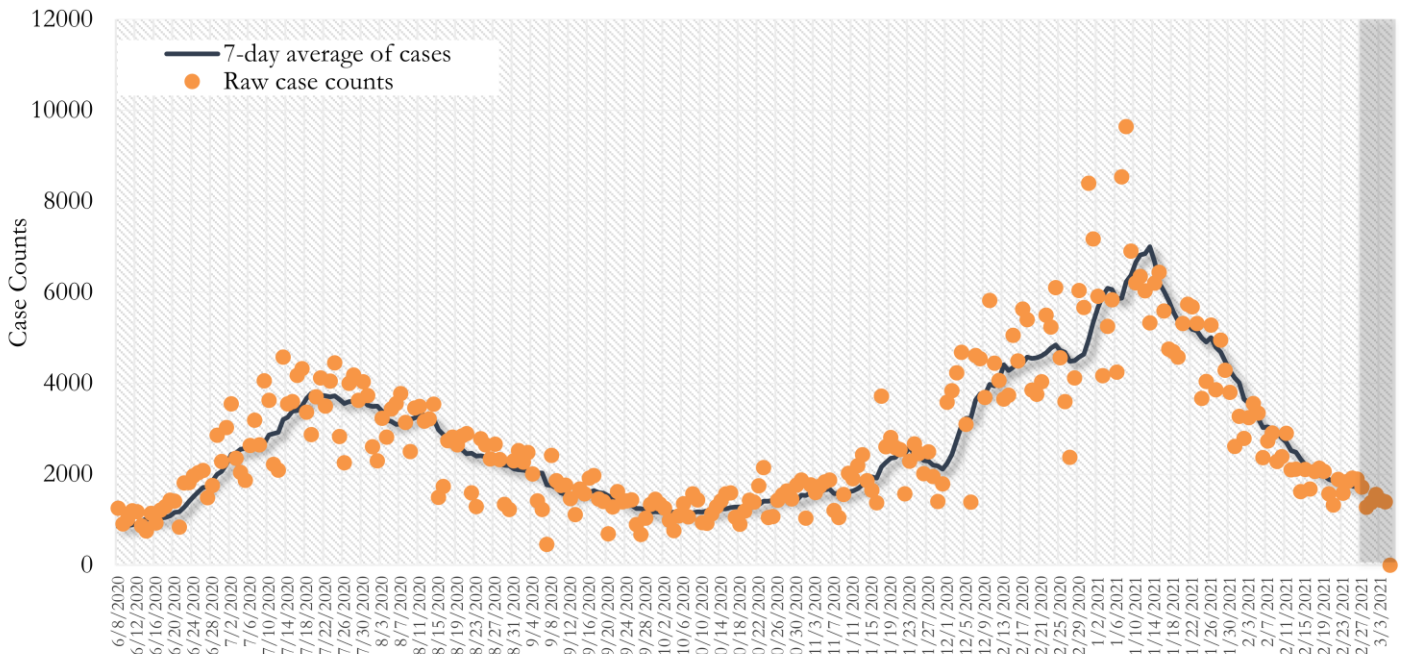
**TRENDS IN COVID-19 CASES, HOSPITALIZATIONS AND DEATHS (7-DAY MOVING AVE.)**

**Fig. 2. New COVID-19 Cases in Fulton County Daily (Averaged over 7 days)**



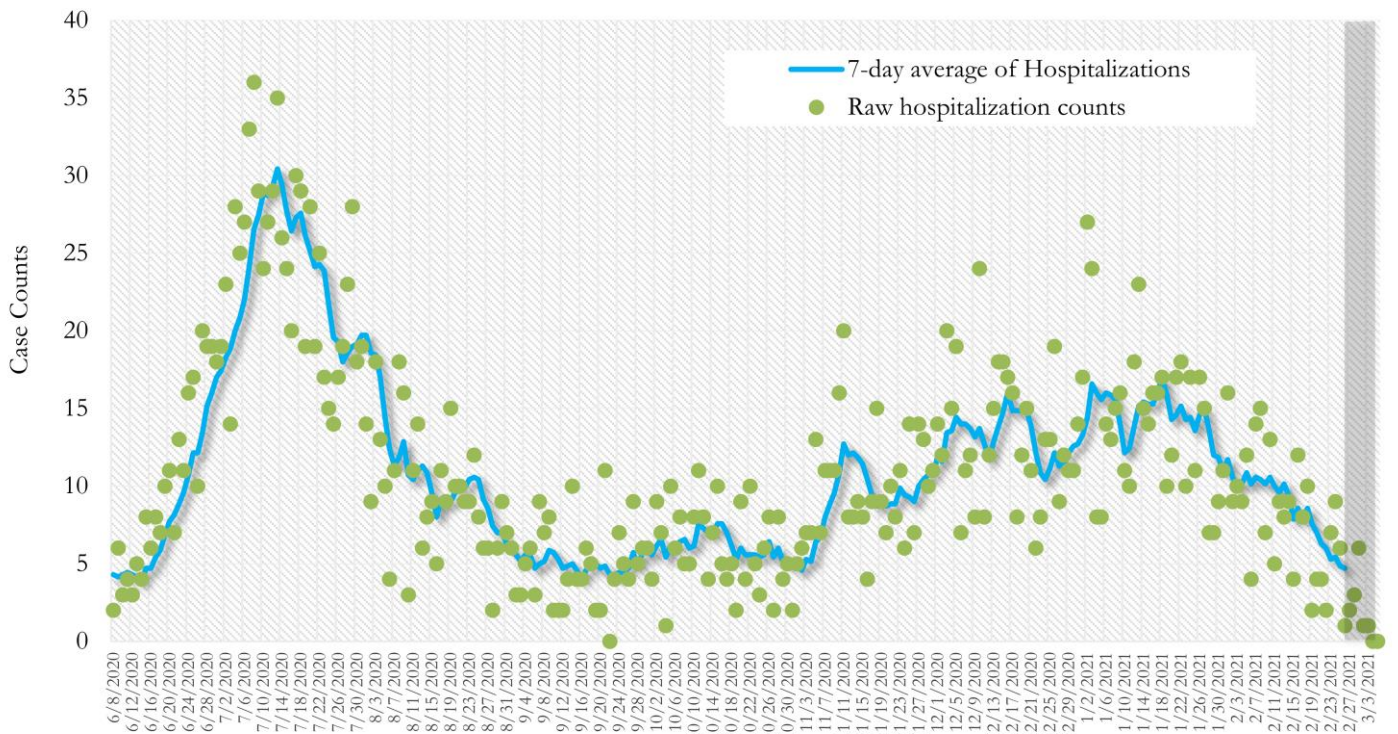
\*Date of collection of first positive sample used (report creation date used where sample collection date is missing). Graph above reflects the trend in COVID-19 diagnosis. Due to the high volume of testing in recent weeks, there have been delays in reporting lab results. Thus, the trend is subject to change as more lab results get added to the state surveillance database.

**Fig. 3. New COVID-19 Cases in Georgia State Daily (Averaged over 7 days)**



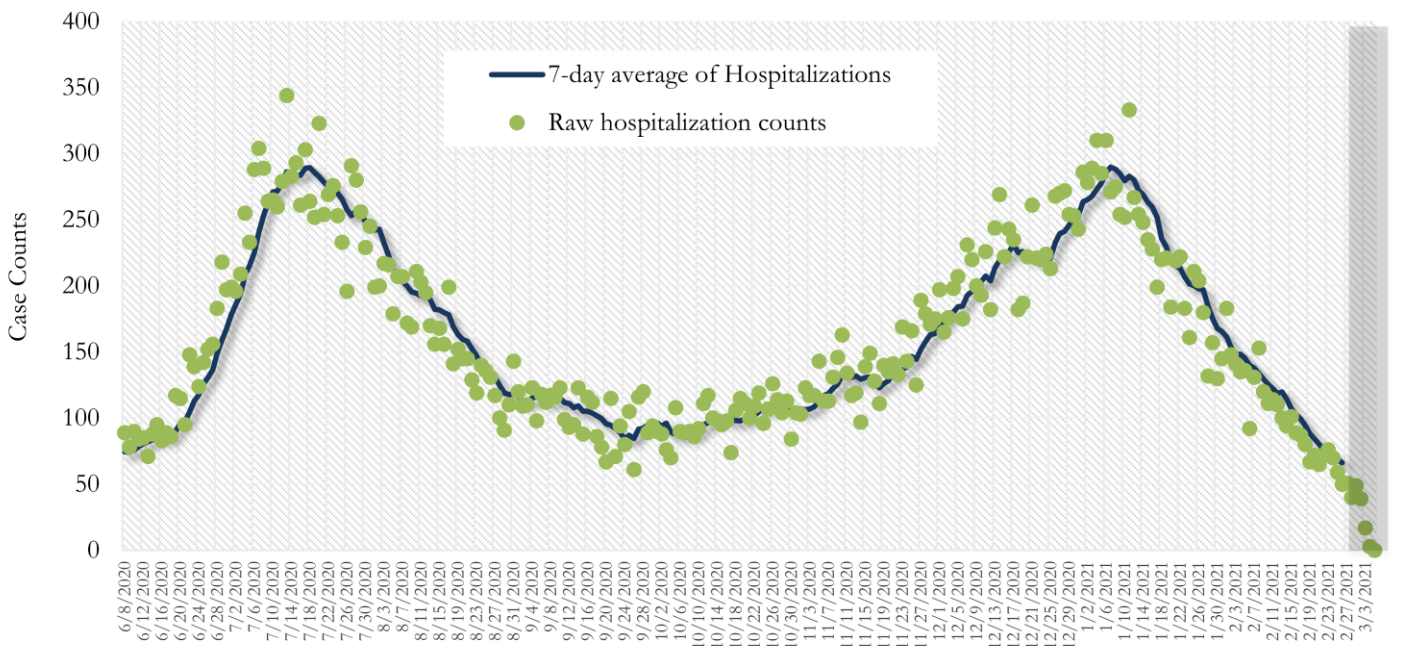
\*Date of collection of first positive sample used (report creation date used where sample collection date is missing). Graph above reflects the trend in COVID-19 diagnosis. Due to the high volume of testing in recent weeks, there have been delays in reporting lab results. Thus, the trend is subject to change as more lab results get added to the state surveillance database.

**Fig. 4. COVID-19 Hospitalizations in Fulton County Daily (Averaged over 7 days)**



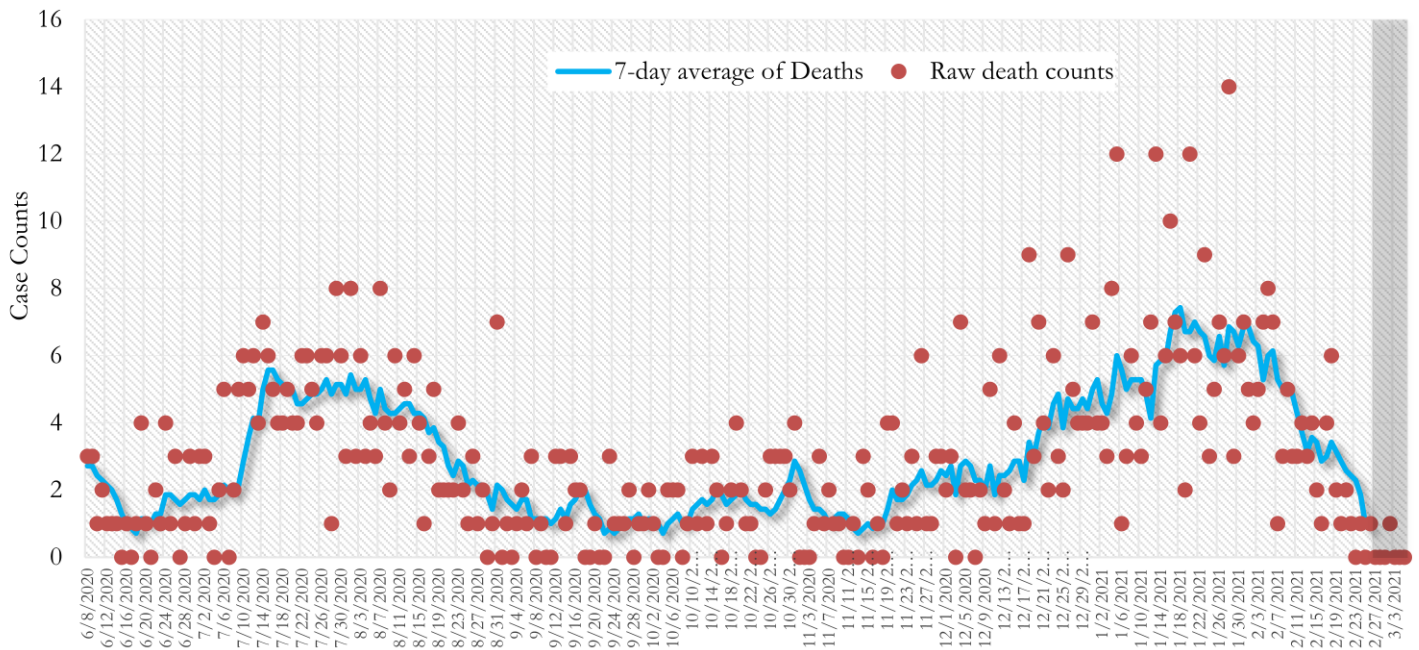
\*Reported date of hospital admission used. Graph above reflects the trend in COVID-19 hospitalizations. Due to the high volume of new cases being added daily, there have been delays in reporting hospitalization data. Thus, the trend is likely to change as more hospitalization data is reported in the state surveillance database.

**Fig. 5. COVID-19 Hospitalizations in Georgia State Daily (Averaged over 7 days)**



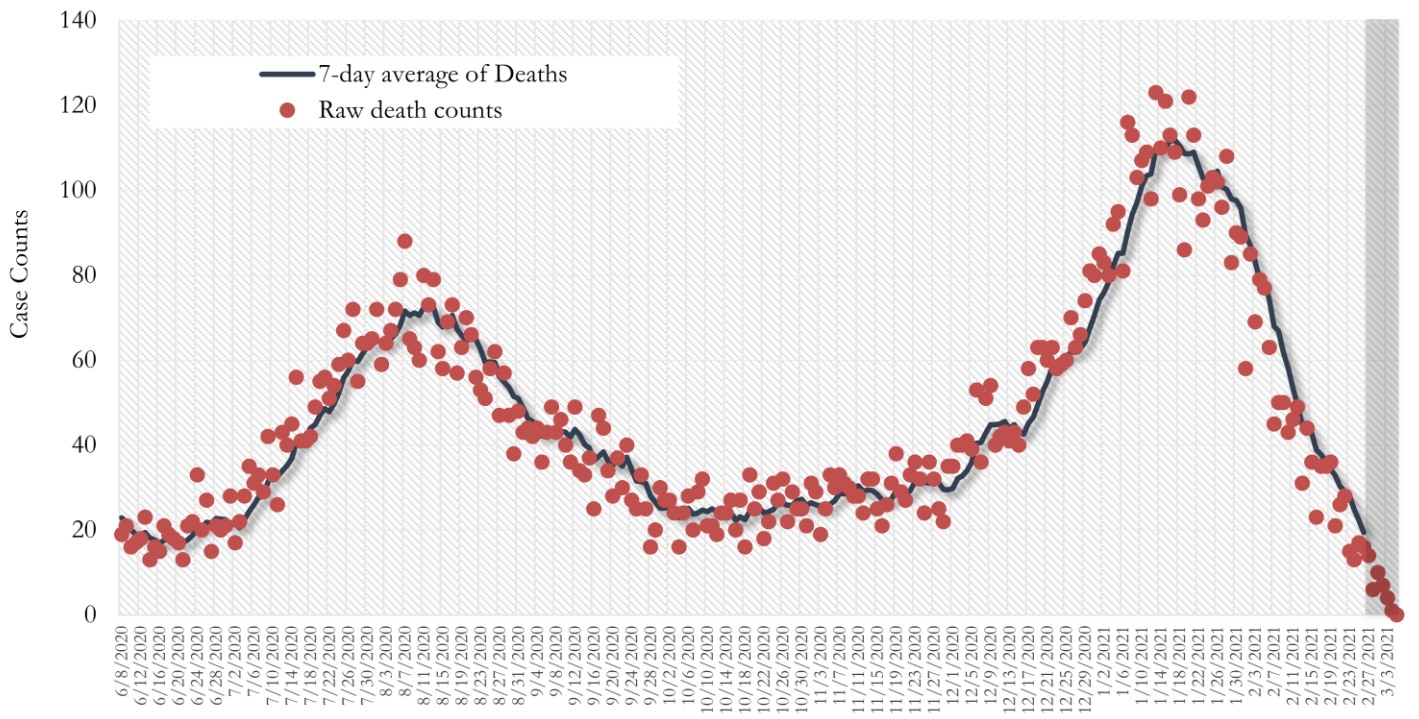
\*Reported date of hospital admission used. Graph above reflects the trend in COVID-19 hospitalizations. Due to the high volume of new cases being added daily, there have been delays in reporting hospitalization data. Thus, the trend is likely to change as more hospitalization data is reported in the state surveillance database.

**Fig. 6. COVID-19 Deaths in Fulton County Daily (Averaged over 7 days)**



\*Reported date of death used. Graph above reflects the trend in deaths attributed to COVID-19. The trend is likely to change as more data on deaths among persons with COVID-19 is reported in the state surveillance database.

**Fig. 7. COVID-19 Deaths in Georgia State Daily (Averaged over 7 days)**



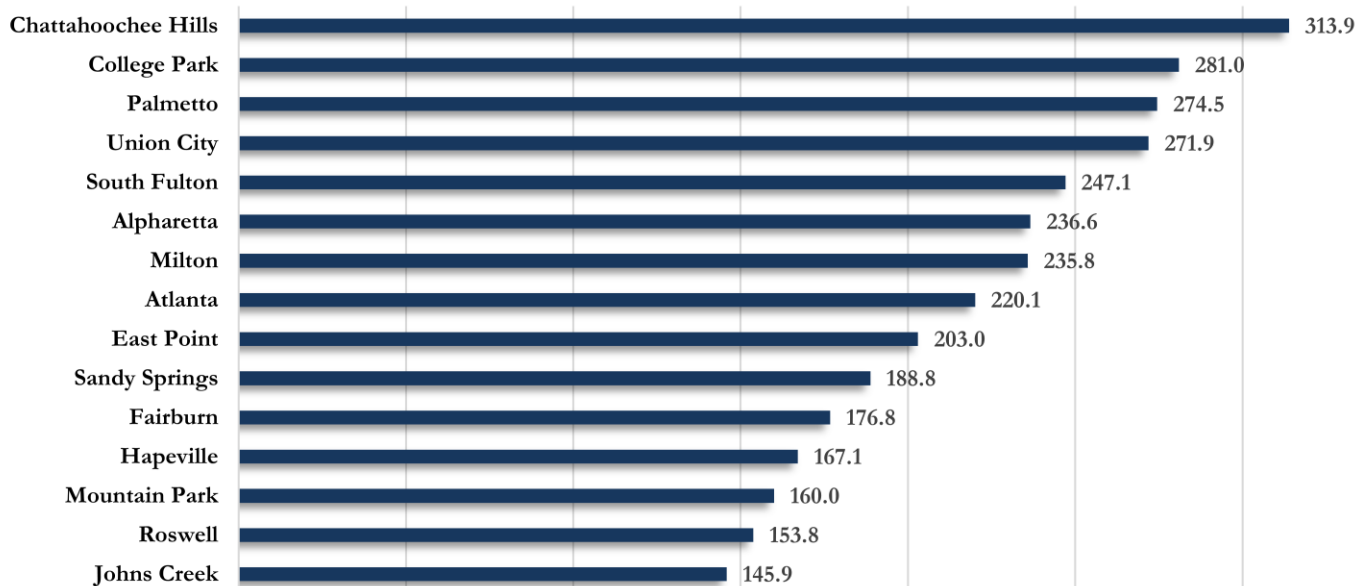
\*Reported date of death used. Graph above reflects the trend in deaths attributed to COVID-19. The trend is likely to change as more data on deaths among persons with COVID-19 is reported in the state surveillance database.

## COVID-19 CASE COUNTS AND RATES BY CITY

	Recent 14-day reporting period <sup>1</sup>	Preceding 14-day reporting period	% Change from preceding 14 days (%) <sup>2</sup>	Incidence Rate <sup>3</sup>
	2/13-2/26	1/30-2/12		
Alpharetta	153	194	↓ 21.1%	236.6
Atlanta	971	1500	↓ 35.3%	220.1
Chattahoochee Hills	<10	<10	↑ 80.0%	313.9 <sup>4</sup>
College Park	39	39	-	281.0
East Point	71	127	↓ 44.1%	203.0
Fairburn	26	63	↓ 58.7%	176.8
Hapeville	11	20	↓ 45.0%	167.1
Johns Creek	122	239	↓ 49.0%	145.9
Milton	90	125	↓ 28.0%	235.8
Mountain Park	<10	<10	↓ 75.0%	160.0
Palmetto	12	19	↓ 36.8%	274.5
Roswell	145	276	↓ 47.5%	153.8
Sandy Springs	199	317	↓ 37.2%	188.8
South Fulton	235	386	↓ 39.1%	247.1
Union City	57	114	↓ 50.0%	271.9
Unknown	49	56	-	-

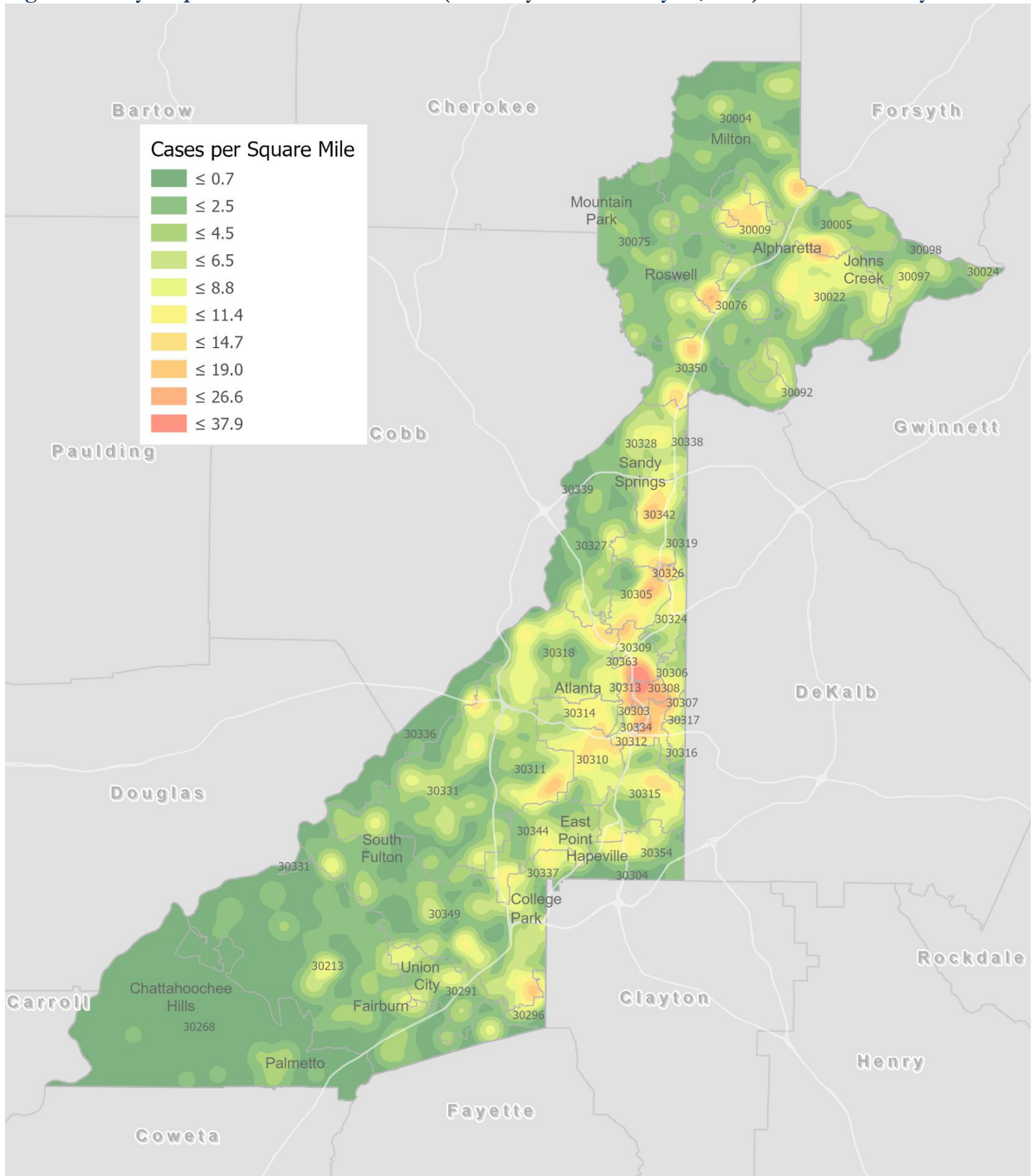
<sup>1</sup>**New cases:** Cases diagnosed in most recent 14 days (based on reported dates of positive sample collection). To allow for lag in reporting results of new diagnoses from samples collected in the most recent week, data used for incident diagnoses analyses were moved back by one week. <sup>2</sup>**% change:** These reflect the percentage increase or decrease in new diagnoses between the 14 days preceding the most recent 7 days and the 14 days preceding that. <sup>3</sup>**(Incidence) Rate:** Rate of new diagnoses in the last 14 day period preceding the immediate past week. **\*\*Data cleaning** (either during case interviews or address geo-coding) may lead to reassignment of few cases from one territory to another based on their corrected addresses. These may appear as "decreases" when compared to the previous counts. These do not reflect errors in the data collection or analysis process but only reflect the minor day-to-day fluctuations in case counts that arise in an evolving public health database like COVID's. <sup>4</sup>**Incidence rate is skewed high due to small population.** **Note: All data reported are preliminary and subject to change.**

**Fig. 8. Incidence Rates by Fulton City for Recent 14-day Reporting Period**



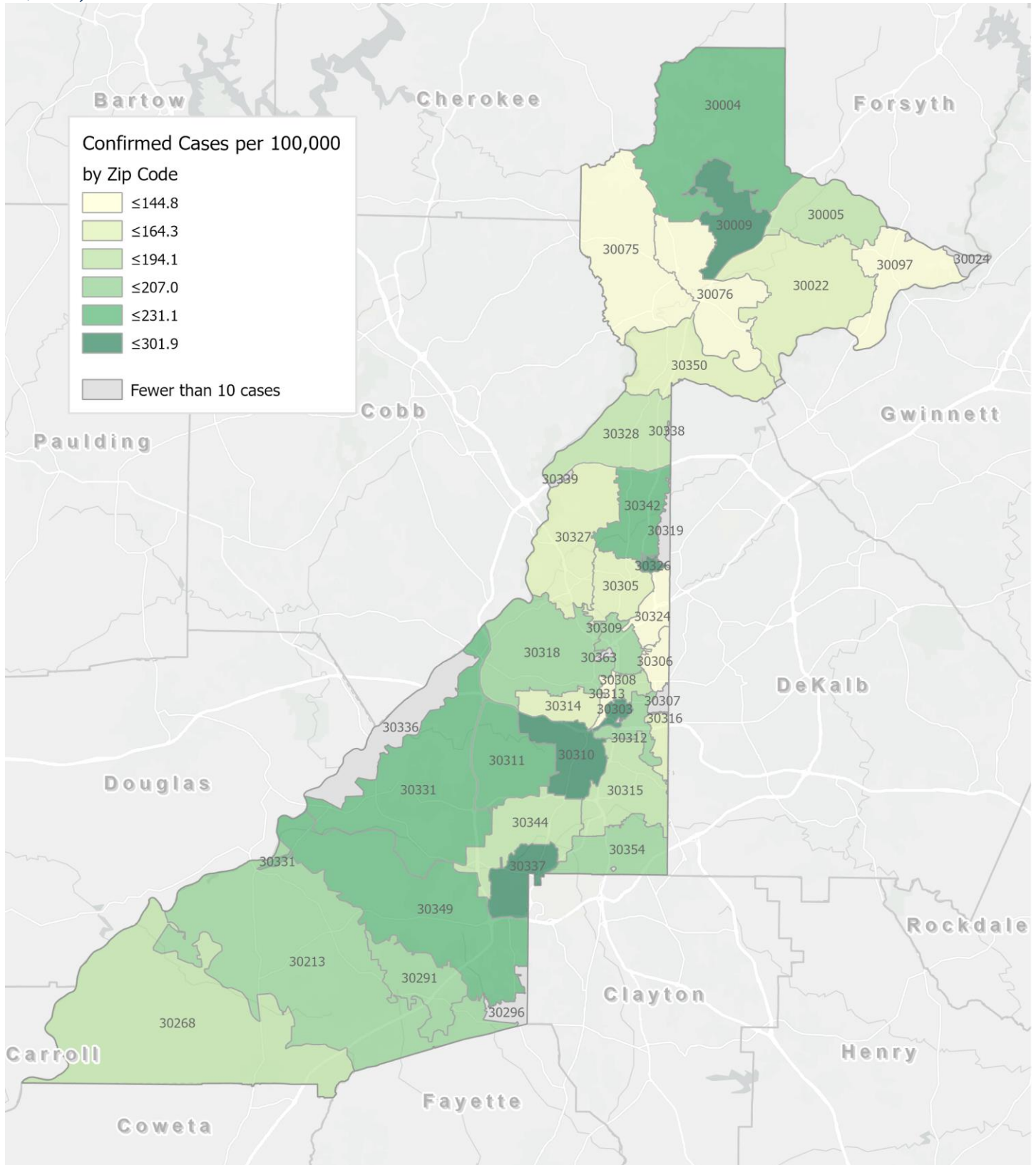
\*Rates shown are per 100,000 persons | All data shown are preliminary and are subject to change as testing results get updated.

Fig. 9. Density Map – New COVID-19 Cases (February 13 – February 26, 2021) in Fulton County



**New COVID-19 cases:** Cases diagnosed in most recent 14 days (based on reported dates of positive sample collection). To allow for lag in reporting results of positive cases from samples collected in the immediate past 7 days, data used for incident diagnoses analyses are moved back by one week. Map reflects new COVID-19 cases diagnosed between Feb 13<sup>th</sup> and Feb 26<sup>th</sup>, 2021 across Fulton County, excluding LTCF cases.

Fig. 10. New COVID-19 Diagnoses Rates (per 100,000 population) by Zip Code (February 13 – February 26, 2021)



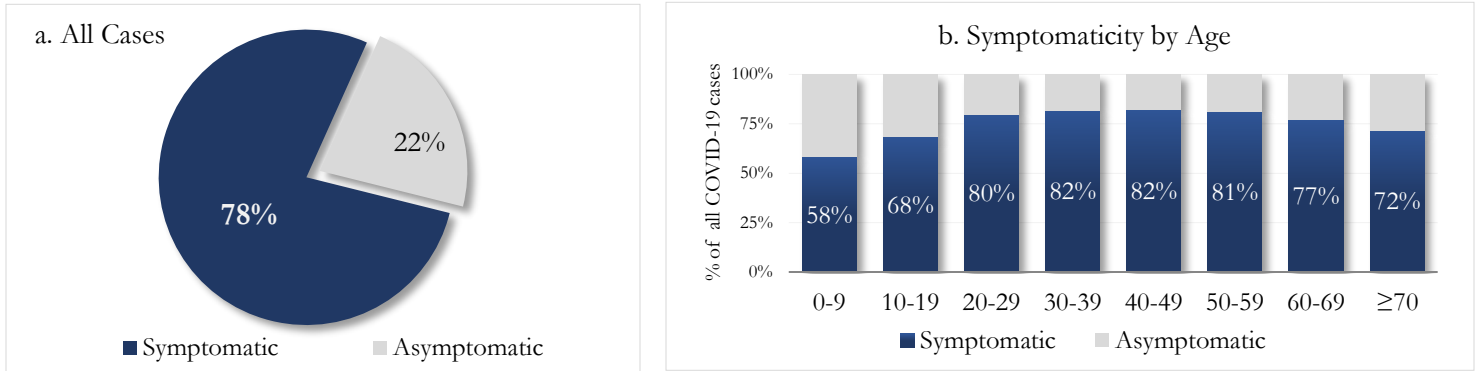
\*Rates shown are per 100,000 populations.

**New COVID-19 cases:** Cases diagnosed in most recent 14 days (based on reported dates of positive sample collection). To allow for lag in reporting results of positive cases from samples collected in the immediate past 7 days, data used for incident diagnoses analyses are moved back by one week. Data used excludes outbreak-related cases at long-term care facilities and map shown reflects only the new non-LTCF cases diagnosed between the dates shown in map title. See page 12 for zip code break down table.

## REPORTING SYMPTOMS AMONG PERSONS WITH COVID-19 IN FULTON

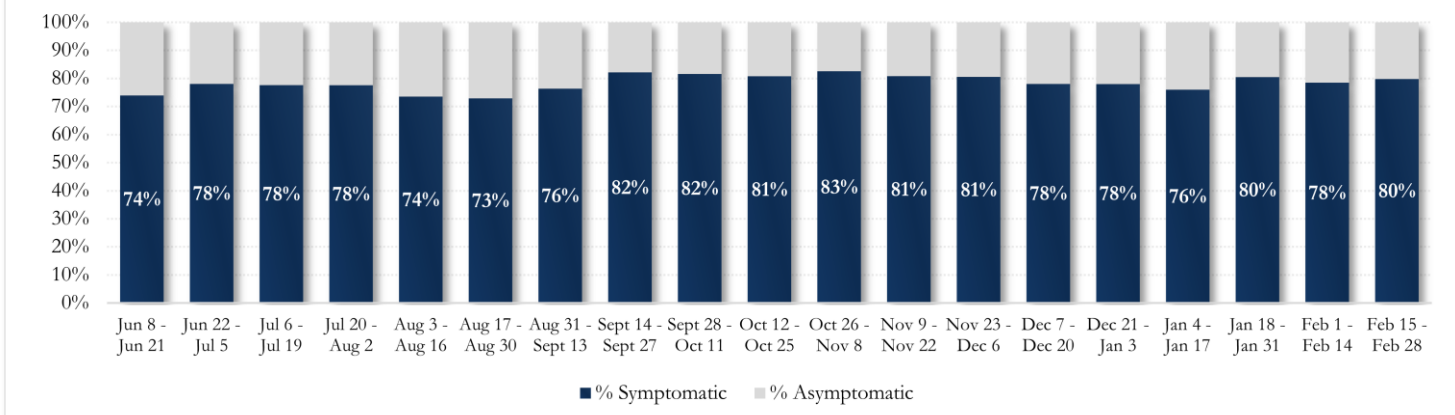
People with COVID-19 have reported a wide range of symptoms ranging from mild symptoms to severe illness. Symptoms may appear 2-14 days after exposure to the virus. Symptoms reported include: cough, shortness of breath/difficulty breathing, fever, chills, muscle pain, headache, sore throat, congestion, nausea or vomiting, diarrhea, fatigue, or new loss of taste or smell – Centers for Disease Control and Prevention (CDC) – Centers for Disease Control and Prevention (CDC) <https://www.cdc.gov/coronavirus/2019-ncov/symptoms-testing/symptoms.html>

**Fig. 11a & b. Total Proportion Reporting Symptoms in Fulton**



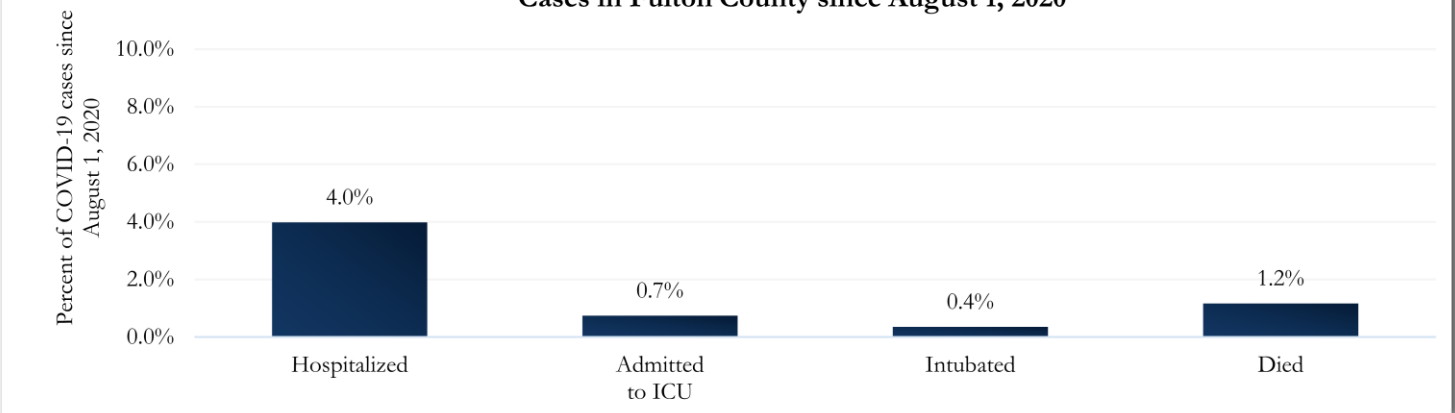
\*\*\*COVID-19 cases who have been case interviewed or had medical charts reviewed as of 3/5/21 only. n = 42,724\*\*\*

**Fig 12. Total Proportion Reporting Symptoms in Fulton County Over Time**



## COVID-19 HOSPITALIZATIONS, ICU ADMISSIONS AND DEATHS IN FULTON

**Fig. 13. Hospitalizations, ICU Admissions, Intubations, and Deaths among COVID-19 Cases in Fulton County since August 1, 2020**





## DEMOGRAPHIC DISTRIBUTIONS – COVID-19 CASES AND DEATHS

### A. Distribution of COVID-19 cases by gender, age, and race in Fulton County by Fulton Region in the past 28 days (1/30- 2/26)

	North Fulton Cities <sup>1</sup> Count (%)	Atlanta Count (%)	South Fulton Cities <sup>2</sup> Count (%)	Unknown City Count (%)	All Fulton Count (%)
<b>Total COVID-19 cases</b>	<b>1738</b>	<b>2331</b>	<b>1163</b>	<b>105</b>	<b>5337</b>
<b>Gender:</b> Female	909 (52%)	1225 (53%)	635 (55%)	55 (52%)	2824 (53%)
Male	827 (48%)	1093 (47%)	525 (45%)	49 (47%)	2494 (47%)
Unknown*	<10	13 (1%)	<10	<10	19 (<1%)
<b>Age:</b> 0-9	97 (6%)	116 (5%)	70 (6%)	<10	290 (5%)
10-19	287 (17%)	210 (9%)	143 (12%)	14 (13%)	654 (12%)
20-29	286 (16%)	515 (22%)	167 (14%)	22 (21%)	990 (19%)
30-39	282 (16%)	480 (21%)	184 (16%)	21 (20%)	967 (18%)
40-49	315 (18%)	345 (15%)	194 (17%)	15 (14%)	869 (16%)
50-59	234 (13%)	276 (12%)	197 (17%)	11 (10%)	718 (13%)
60-69	130 (7%)	187 (8%)	124 (11%)	12 (11%)	453 (8%)
≥70	107 (6%)	197 (8%)	82 (7%)	<10	389 (7%)
Unknown*	<10	<10	<10	<10	7 (<1%)
<b>Race:</b> Asian, NH	149 (9%)	55 (2%)	11 (1%)	<10	220 (4%)
Black, NH	236 (14%)	1107 (47%)	867 (75%)	39 (37%)	2249 (42%)
White, NH	749 (43%)	575 (25%)	61 (5%)	25 (24%)	1410 (26%)
Hispanic	252 (14%)	122 (5%)	80 (7%)	<10	461 (9%)
Other, NH	140 (8%)	120 (5%)	30 (3%)	<10	295 (6%)
Unknown*	212 (12%)	352 (15%)	114 (10%)	24 (23%)	702 (13%)

\*Unknown includes cases not yet interviewed. 28 days delayed by seven to account for lag in reporting lab results. <sup>1</sup>Includes all Fulton County cities north of Atlanta (Alpharetta, Johns Creek, Milton, Mountain Park, Roswell, Sandy Springs). <sup>2</sup>Includes all cities south of Atlanta (Chattahoochee Hills, College Park, East Point, Fairburn, Hapeville, Palmetto, South Fulton, and Union City)

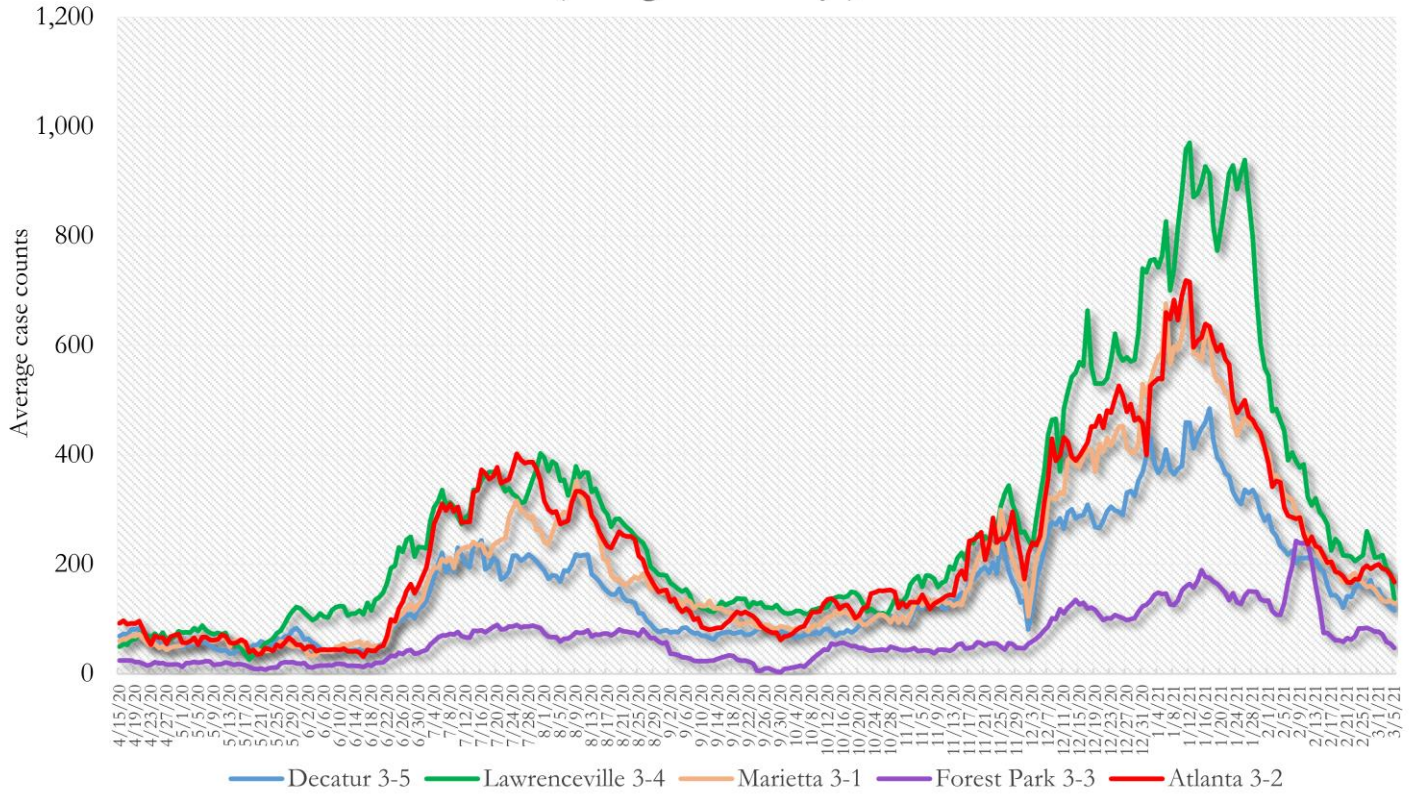
### B. Distribution of COVID-19 deaths by gender, age, and race in Fulton County in the past 28 days (1/30 - 2/26)

	Count of New Deaths	% of New Deaths
<b>Total COVID-19 deaths</b>	<b>26</b>	
<b>Gender:</b> Female	14	54%
Male	12	46%
Unknown	<10	<1%
<b>Age:</b> ≤ 29	<10	<1%
30-39	<10	<1%
40-49	<10	15%
50-59	<10	8%
60-69	<10	23%
≥70	14	54%
Unknown	<10	<1%
<b>Race:</b> Asian, NH	<10	4%
Black, NH	16	62%
White, NH	<10	31%
Hispanic	<10	4%
Other, NH	<10	<1%
Unknown	<10	<1%

**Note:** All data reported are preliminary and subject to change. This table includes data on confirmed COVID-19 deaths and is subject to change as GA DPH completes cause of death confirmation processes. Data are 28 days delayed by seven to account for lag in reporting of deaths.

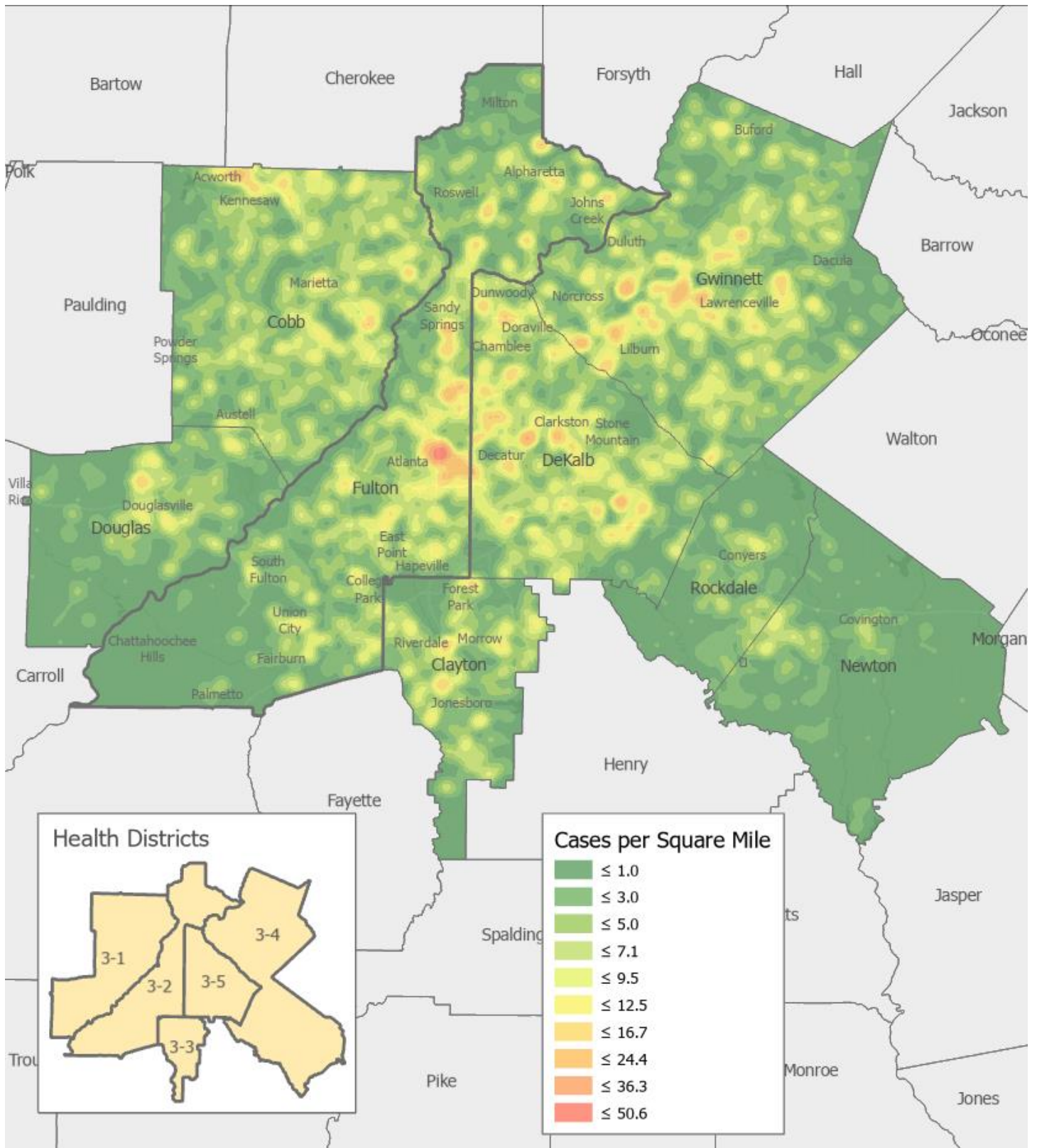
**COVID-19 CASE TRENDS IN FULTON AND SURROUNDING DISTRICTS**

**Fig. 14. Daily Case Counts for Atlanta Metro Districts  
(Averaged over 7 days)**



\*Graph shows the average number of cases calculated from the daily cumulative case counts in the metro Atlanta districts. Increases in daily cumulative case counts may include cases diagnosed earlier during the pandemic but were only recently reported to the state as cases diagnosed belonging to these districts.

Fig. 15. COVID-19 Cases in Fulton County and Surrounding Districts (February 13 – February 26, 2021)



## COVID-19 NEW CASE<sup>1</sup> COUNTS BY ZIP CODE

Zip Code	Recent 14-day reporting period (2/13 – 2/26)	Previous 14-day reporting period (1/30 – 2/12)	% Change between reporting periods <sup>2</sup>
<b>All Fulton</b>	<b>2192</b>	<b>3486</b>	<b>↓ 37.1%</b>
30004	117	150	↓ 22.0%
30005	63	85	↓ 25.9%
30009	45	64	↓ 29.7%
30022	119	192	↓ 38.0%
30023	0	<10	↓ 100.0%
30024	<10	<10	-
30075	69	142	↓ 51.4%
30076	67	128	↓ 47.7%
30080	0	0	-
30097	35	86	↓ 59.3%
30098	0	0	-
30135	0	0	-
30138	0	0	-
30139	0	0	-
30213	92	160	↓ 42.5%
30268	16	29	↓ 44.8%
30291	53	110	↓ 51.8%
30296	<10	17	↓ 52.9%
30301	<10	0	-
30303	17	21	↓ 19.0%
30305	53	83	↓ 36.1%
30306	19	48	↓ 60.4%
30307	10	13	↓ 23.1%
30308	41	52	↓ 21.2%
30309	74	94	↓ 21.3%
30310	76	106	↓ 28.3%
30311	78	129	↓ 39.5%
30312	52	90	↓ 42.2%
30313	23	41	↓ 43.9%
30314	41	62	↓ 33.9%
30315	75	117	↓ 35.9%
30316	21	30	↓ 30.0%
30318	146	219	↓ 33.3%
30319	<10	14	↓ 57.1%
30321	<10	<10	-
30324	38	87	↓ 56.3%
30326	18	18	-
30327	42	106	↓ 60.4%
30328	68	111	↓ 38.7%
30331	126	203	↓ 37.9%
30334	<10	0	-
30336	<10	<10	-
30337	32	30	↑ 6.7%

Zip Code	Recent 14-day reporting period (2/13 – 2/26)	Previous 14-day reporting period (1/30 – 2/12)	% Change between reporting periods
30338	<10	<10	-
30339	<10	10	↓ 60.0%
30340	0	0	-
30341	0	0	-
30342	92	106	↓ 13.2%
30344	65	124	↓ 47.6%
30345	<10	0	-
30349	141	226	↓ 37.6%
30350	71	96	↓ 26.0%
30354	42	56	↓ 25.0%
30358	0	0	-
30363	<10	<10	-
30374	0	0	-
30606	0	0	-
31131	0	0	-
31150	0	0	-
Unknown	19	11	-

<sup>1</sup>**New cases:** Cases diagnosed in most recent 28 days (based on reported dates of positive sample collection). To allow for lag in reporting results of new diagnoses from samples collected in the most recent week, data used for incident diagnoses analyses were moved back by one week. <sup>2</sup>**Percent change:** These reflect the percentage increase or decrease of new diagnoses between the 14 days preceding the past 7 days and the 14 days preceding that. Changes in ZIP codes with less than 10 cases in both 2 week intervals are not reported

The following data are updated every two weeks.

Last updated 3/2/2021

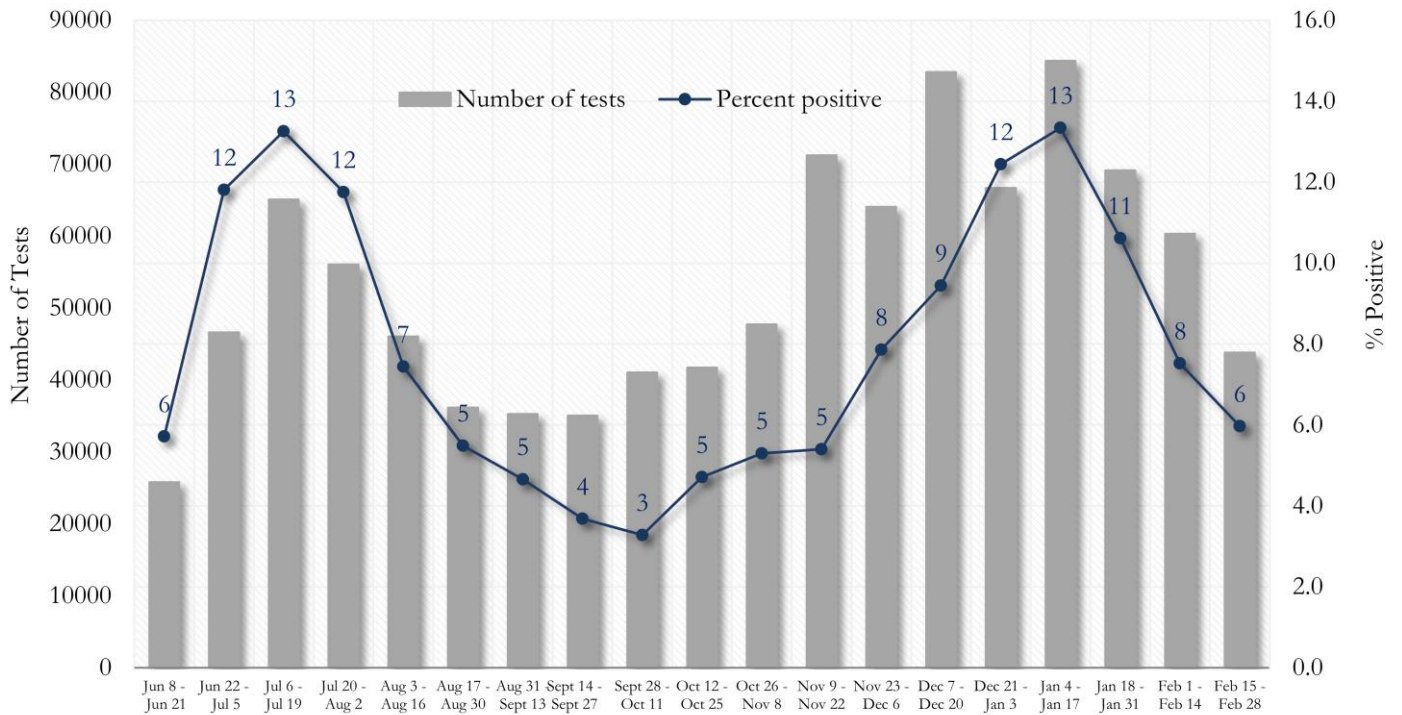
These data are generated using a fixed start date and counted forward in 14-day intervals. Using these time blocks allows for the stability in trends over time and accounts for delays in reporting lab results.

In the interest of keeping the reports concise and useful, the cumulative counts updated on a monthly basis can now be viewed between updates at the Fulton County Board of Health website [here](#).

Please visit the Georgia Department of Public Health Daily Status Report [here](#) for cumulative daily counts.

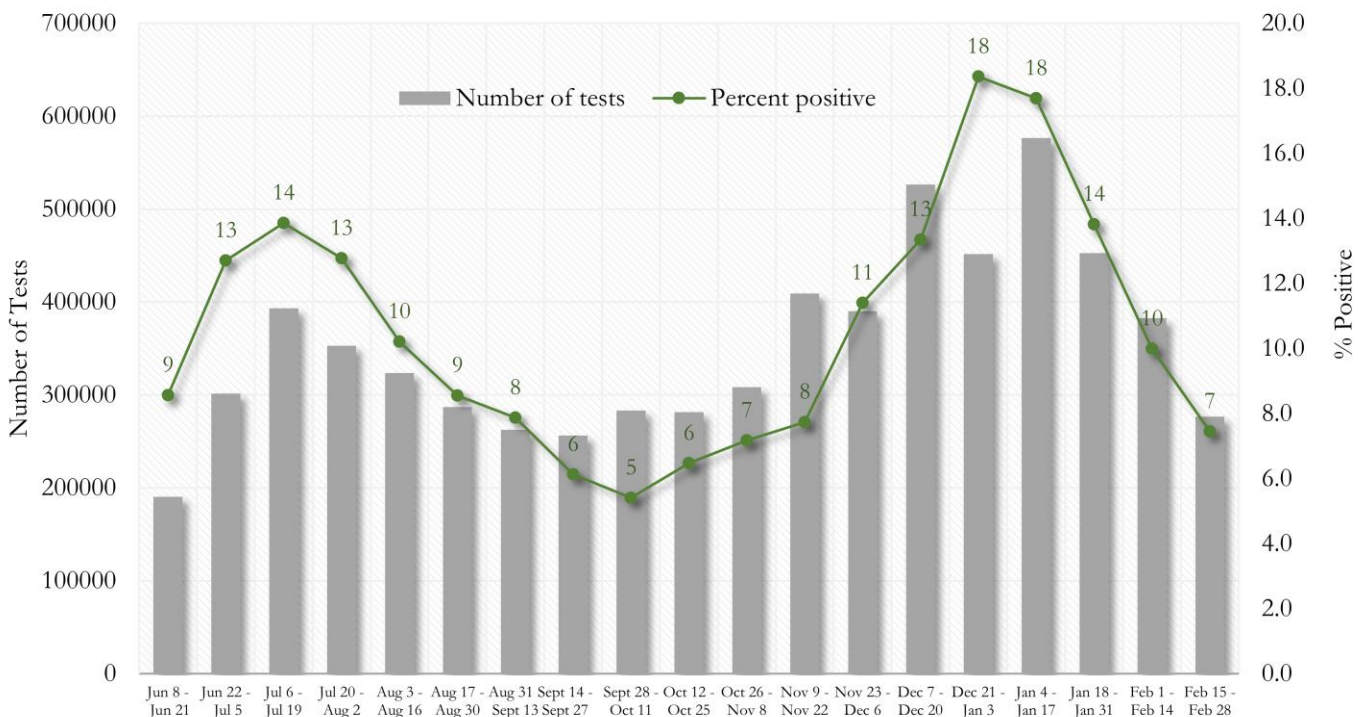
**COVID-19 TESTING AND POSITIVITY IN FULTON COUNTY AND GEORGIA**

**Fig. 16. Trends in Positive COVID-19 Tests in Fulton County by 14-day Periods**



\*Data on Polymerase Chain Reaction (PCR) tests only included.

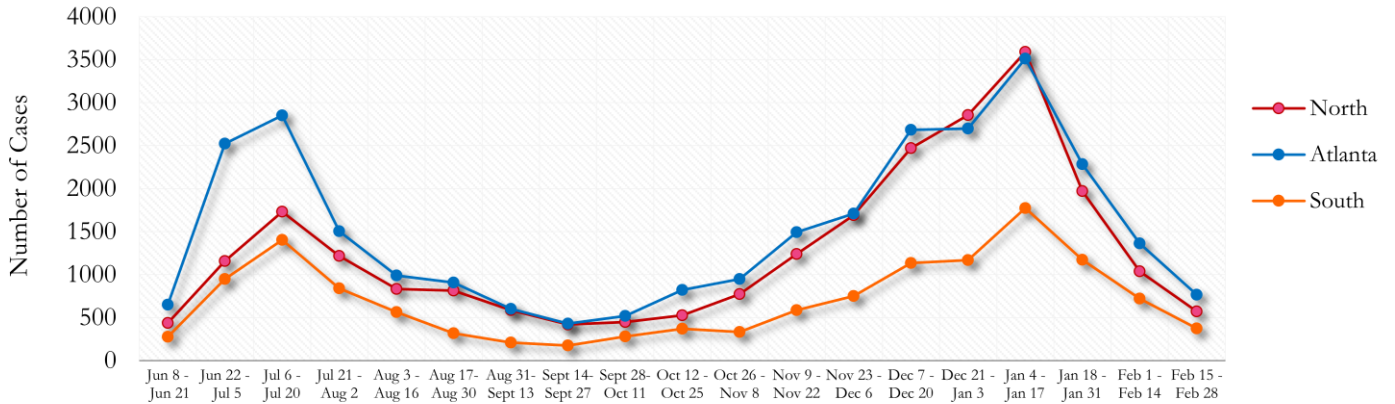
**Fig. 17. Trends in Positive COVID-19 Tests in Georgia by 14-day Periods**



\*Data on Polymerase Chain Reaction (PCR) tests only included.

**TRENDS IN COVID-19 CASES AMONG DEMOGRAPHIC GROUPS (14 DAY PERIODS)**

**Fig. 18. Trends in Geographic distribution of COVID-19 Cases in Fulton County by 14-day periods**

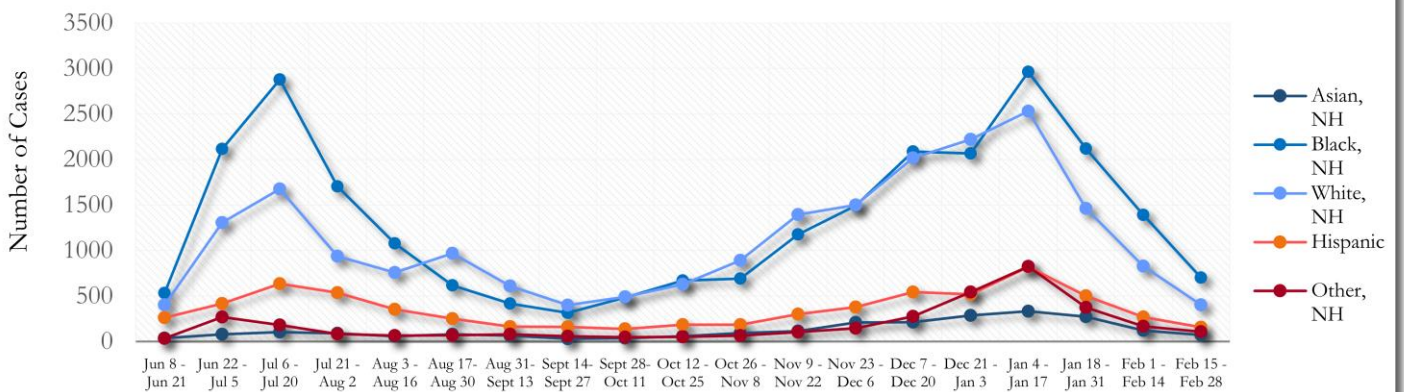


In the past two weeks, the city of Atlanta has accounted for the majority of new cases.

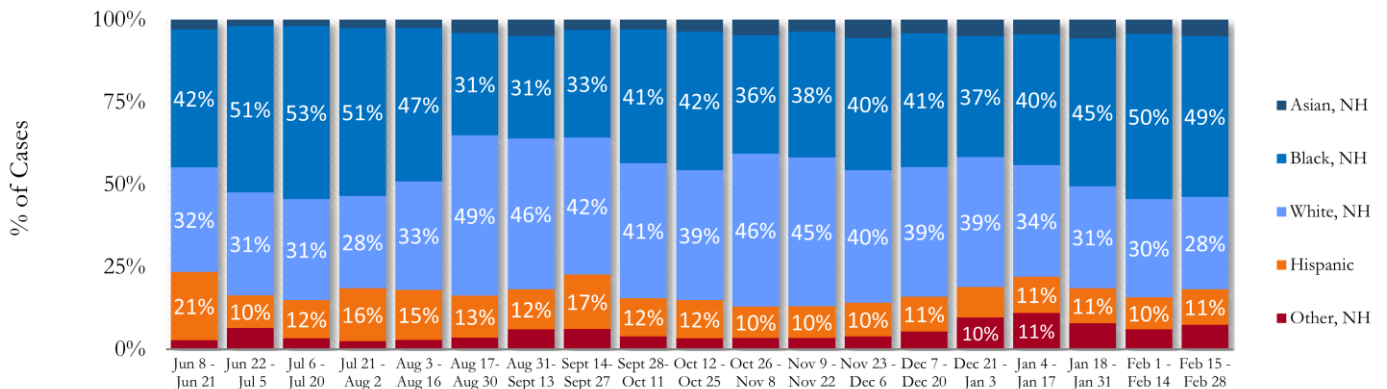
\*North - Includes all Fulton cities north of Atlanta (Alpharetta, Johns Creek, Milton, Mountain Park, Roswell, Sandy Springs)

\*South - Includes all Fulton cities south of Atlanta (Chattahoochee Hills, College Park, East Point, Fairburn, Hapeville, Palmetto, South Fulton, and Union City)

**Fig. 19. Trends in Racial Distribution of COVID-19 Cases in Fulton County by 14-day periods**

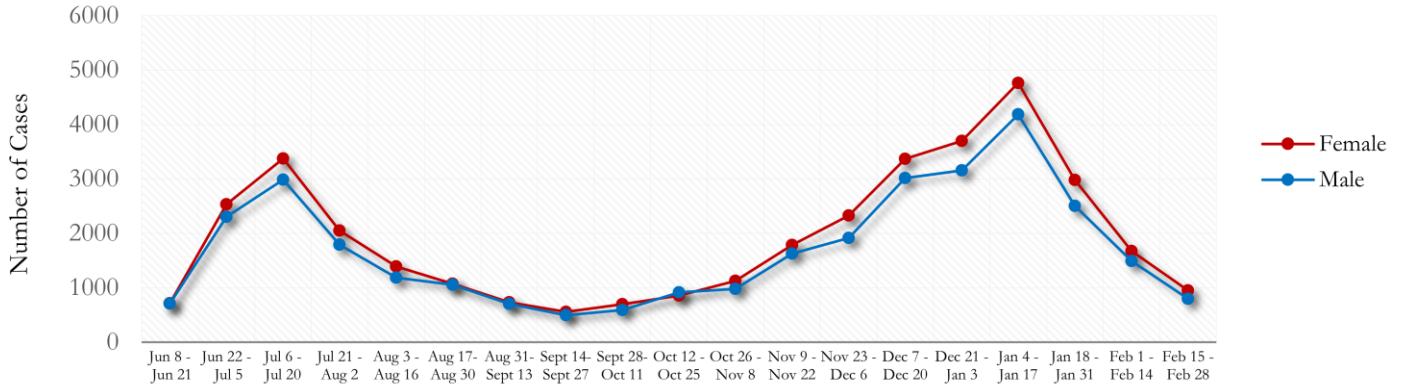


**Fig. 20. Racial Distribution of COVID-19 Cases in Fulton County by 14-day periods**

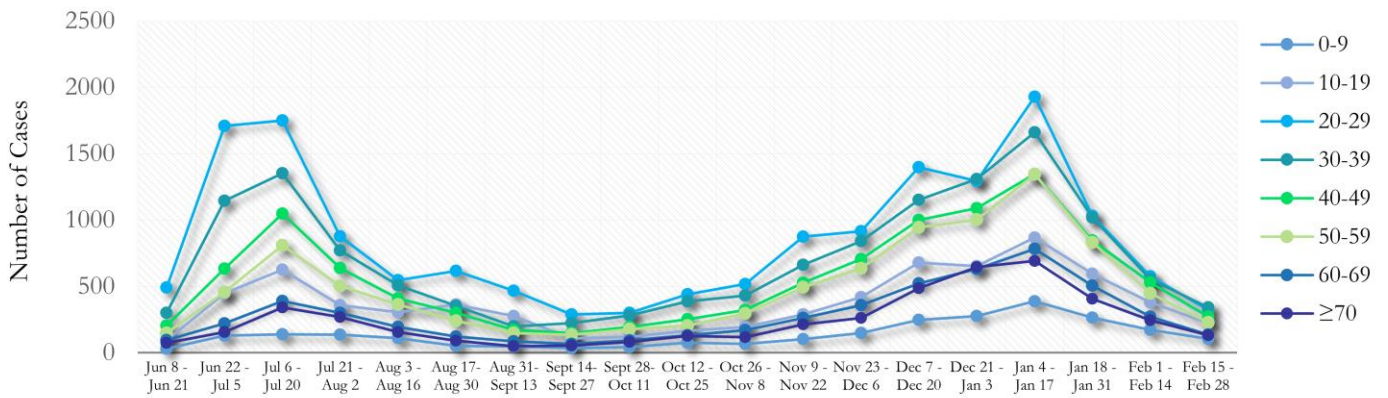


About 17% of all Fulton County COVID cases are missing data on patient race and ethnicity and in the past two weeks, about 18% of cases are missing this data.

**Fig. 21. Trends in Gender Distribution of COVID-19 Cases in Fulton County by 14-day periods**

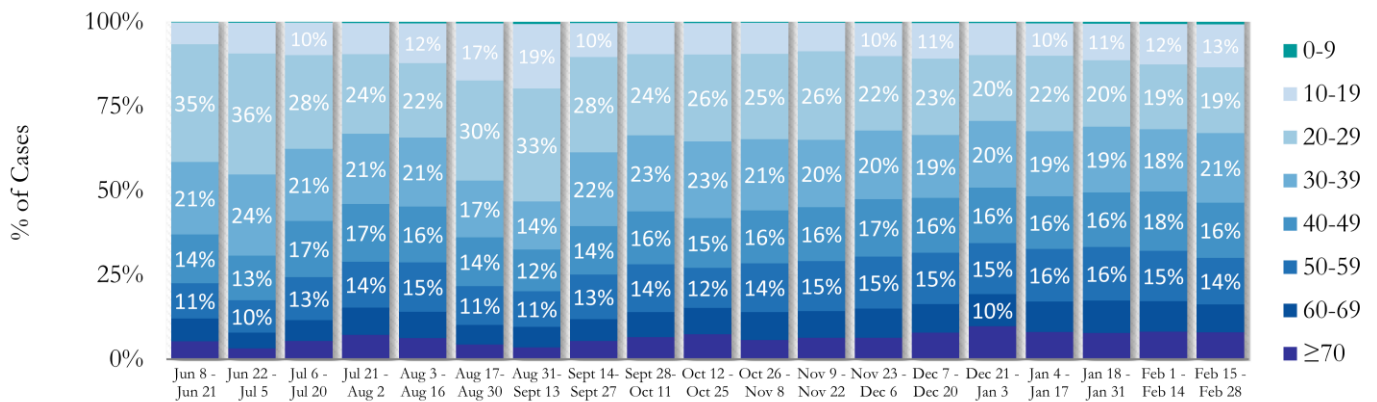


**Fig. 22. Trends in Age Distribution of COVID-19 Cases in Fulton County by 14-day periods**



In the most recent two weeks, 20-29 year olds and 30-39 year olds accounted for the majority of new cases.

**Fig. 23. Age Distribution of COVID-19 Cases in Fulton County by 14-day periods**

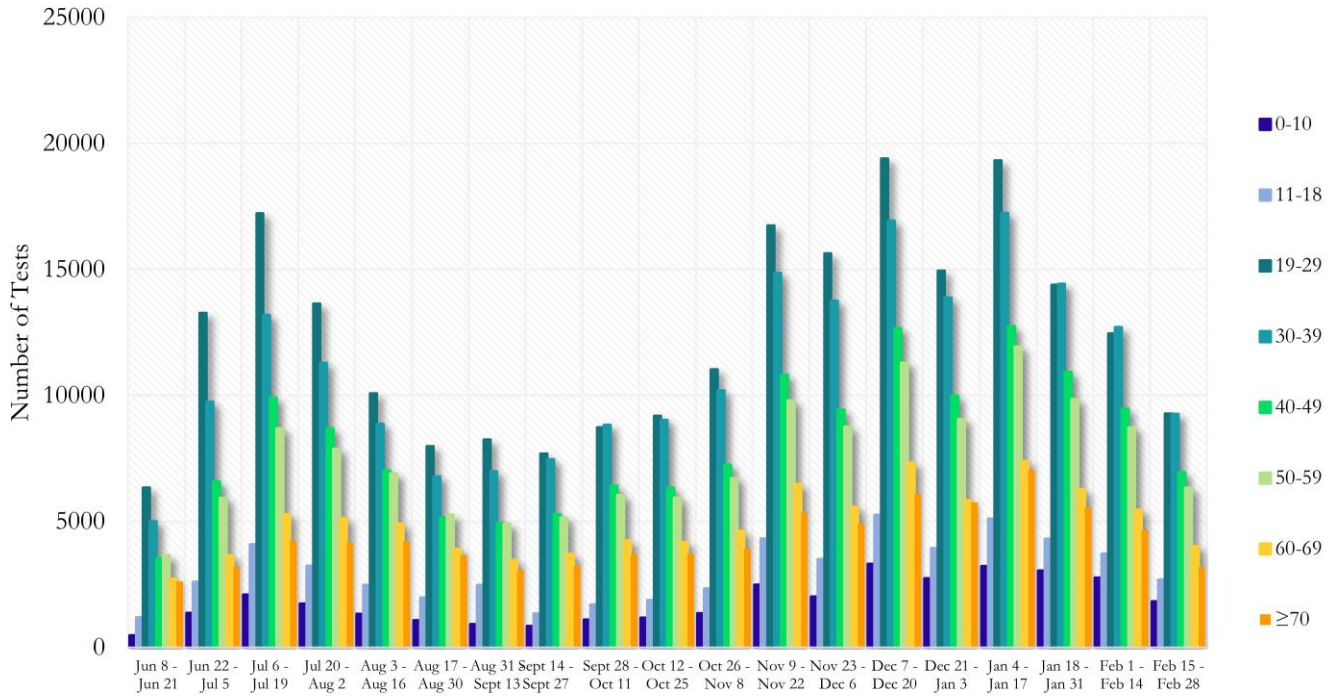


Value labels under 10% are not shown.



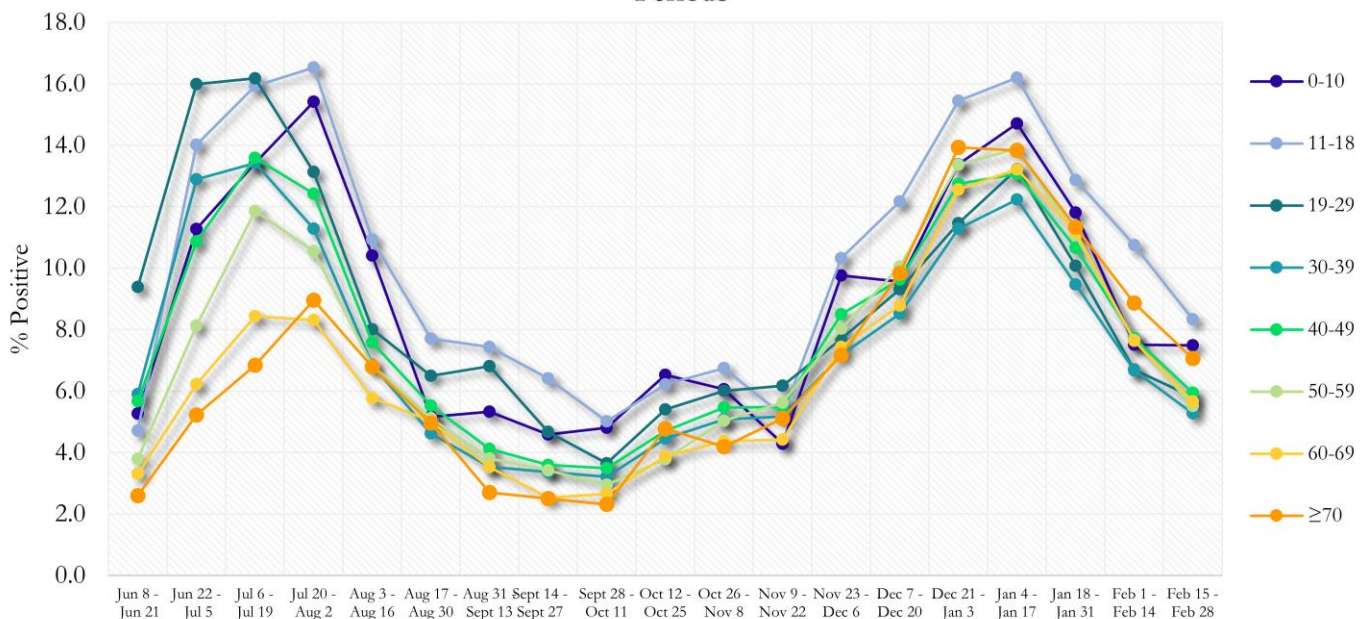
**COVID-19 TESTING AND POSITIVITY IN FULTON COUNTY BY AGE AND RACE**

**Fig. 24. COVID-19 Tests by Age in Fulton County by 14-day Periods**



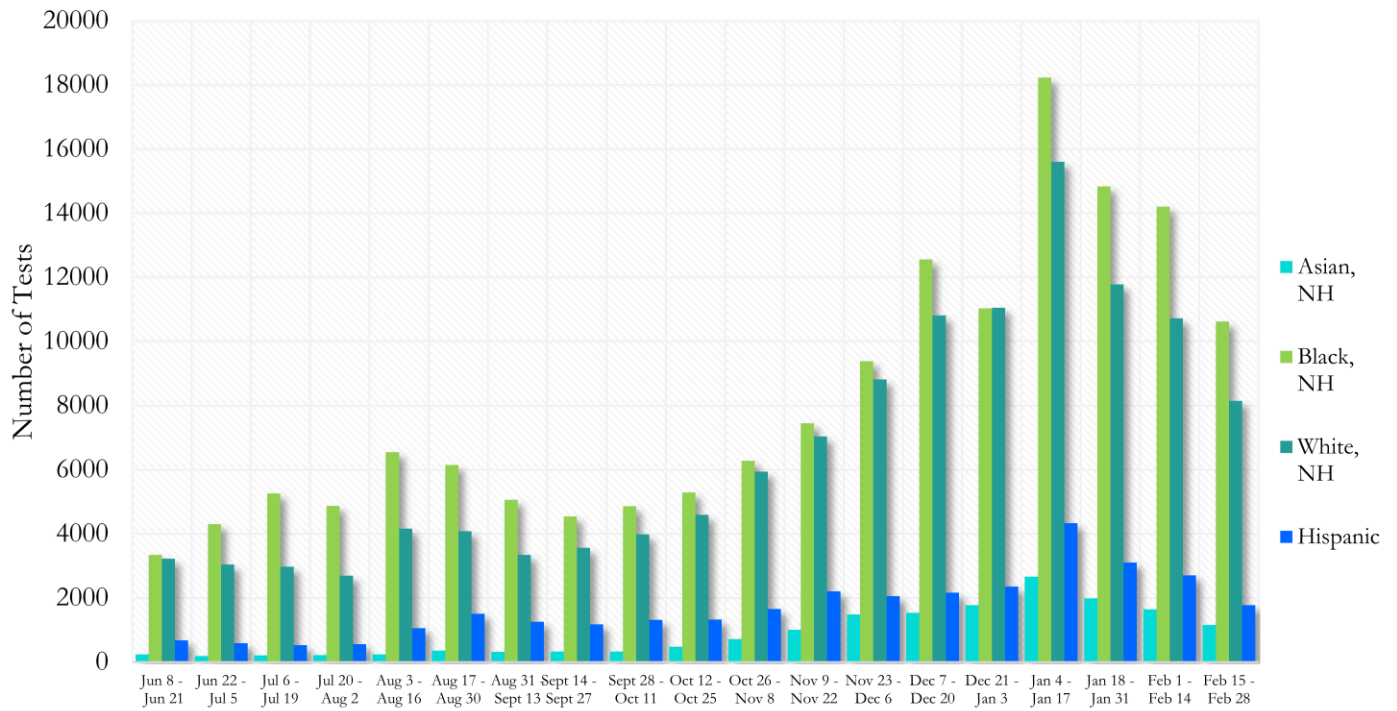
\*Data on Polymerase Chain Reaction (PCR) tests only included.

**Fig. 25. Percent Positive COVID-19 Tests by Age Group in Fulton County by 14-day Periods**



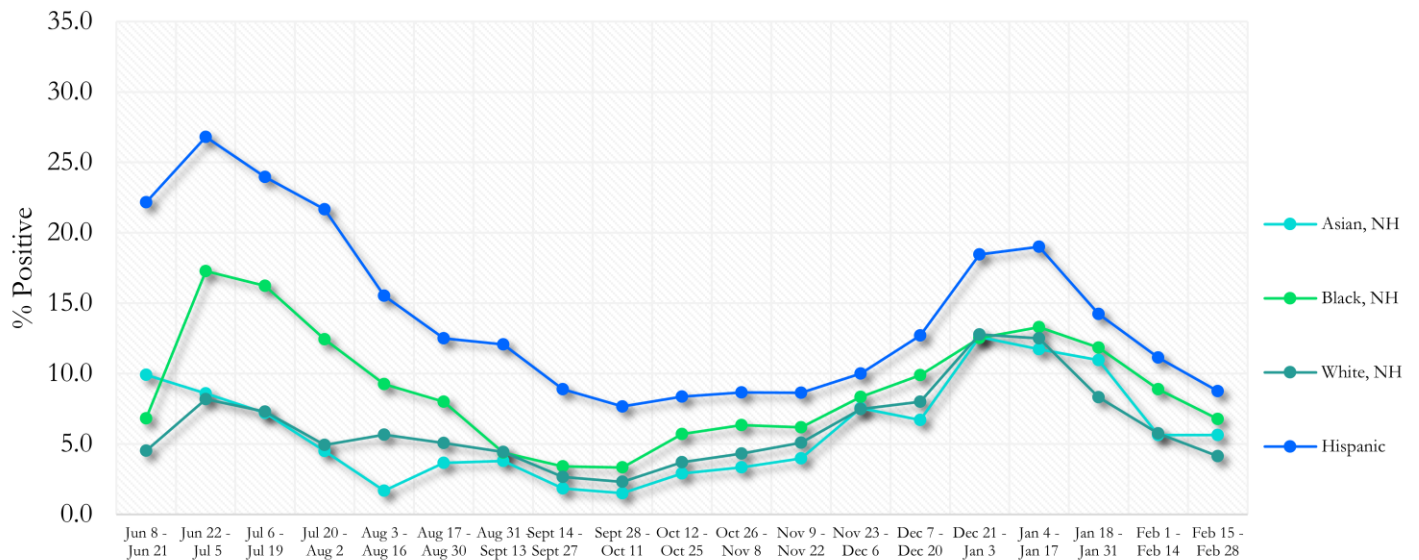
\*Data on Polymerase Chain Reaction (PCR) tests only included.

**Fig. 26. COVID-19 Tests by Race and Ethnicity in Fulton County by 14-day Periods**



\*Data on Polymerase Chain Reaction (PCR) tests only included. For the recent two weeks, 46% of test results did not have race/ethnicity information.

**Fig. 27. Percent Positive COVID-19 Tests by Race and Ethnicity in Fulton County by 14-day Periods**



\*Data on Polymerase Chain Reaction (PCR) tests only included.

## COVID-19 IN LONG-TERM CARE FACILITIES IN FULTON COUNTY

Older persons (aged 65 years and older) and persons who live in nursing homes or other long-term care facilities seem to be at higher risk for developing more serious complications from COVID-19. Extra precautions are recommended for individuals within this risk groups – Centers for Disease Control and Prevention (CDC 2020) <https://www.cdc.gov/coronavirus/2019-ncov/need-extra-precautions/people-at-higher-risk.html>

**Fig. 28. Cumulative COVID-19 Diagnoses and Deaths in Fulton County Associated with Long-Term Care Facilities**



\*\*\*LTCF → Long-term Care Facility (Includes residents and Staff)\*\*\*

## CURRENT COVID-19 POSITIVITY:

**Fig. 29. Percentage of LTCF Residents with Current COVID-19 Infection**



\*This data comes from facilities self-reporting to DPH and is thus subject to change as more facilities report or provide updated counts. Current total resident count = 4,150