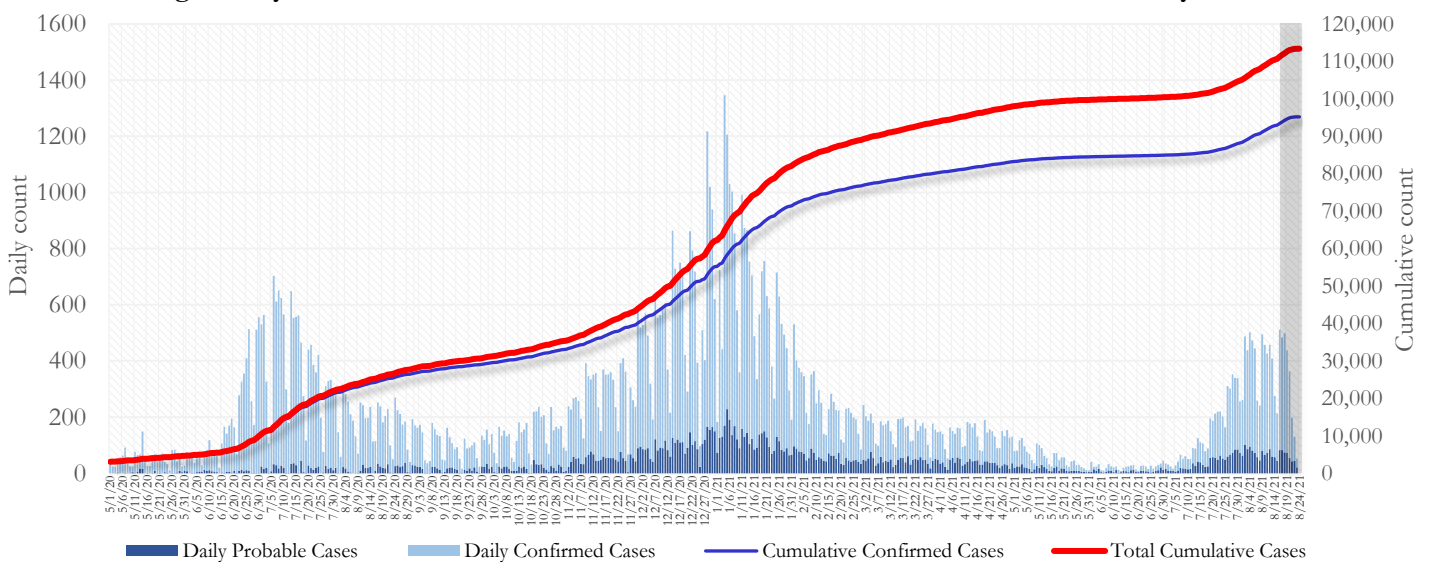


## SUMMARY

- As of August 24, 2021, Fulton County has recorded **95,238 confirmed cases** and **18,189 probable cases** of COVID-19.
- Figure 1 shows both confirmed and probable case counts but the ensuing tables and figures use data from **confirmed cases only**.
- As of August 24, 2021, Fulton County has recorded **1,404 confirmed COVID-19 deaths**. 159 deaths are currently under review by GA DPH to confirm cause of death.
- By city, new confirmed COVID-19 case rates range from 160.0 per 100,000 persons (Mountain Park) to 887.4 per 100,000 persons (Union City). [**Fulton County Diagnoses Rates (per 100,000 persons): Cumulative – 8664.5; Incidence – 456.2**]. See map showing incident case rate by ZIP code on Pg.7.
- Of all PCR testing done in Fulton County between August 2 and August 15, the **percent positivity rate was 12.8%**.

**Fig 1. Daily and Cumulative Confirmed and Probable COVID-19 cases in Fulton County, GA**



Counts shown reflect the number of cases as of 10:00 am on 8/24/21 using the date of first positive sample collection. Where date of sample collection was not available or missing, the date of report creation in GA SendSS was used instead. The Georgia Department of Health defines a confirmed cases as someone with a positive molecular test, also known as PCR. A probable case is defined as a positive antigen test, though probable cases are still considered positive cases and individuals who tested positive through an antigen test should follow all DPH isolation and quarantine guidance. **Note:** Delays in data reporting may cause changes in data counts, particularly in the shaded portion. Data throughout this report are preliminary and subject to ongoing data cleaning processes, and thus are subject to change.

**THE FOLLOWING ANALYSES (PAGES 1-19) ARE USING DATA ON CONFIRMED CASES ONLY.**

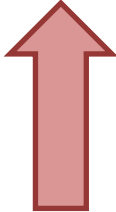
## DISTRIBUTION OF COVID-19 CASES BY REGION

**New cases:** 44% of the new COVID-19 cases in the past 2 weeks occurred in Atlanta while 25% and 27% occurred in the Northern and Southern regions of the county respectively.

Fulton Region	% Cumulative count	% New cases*
Atlanta	43.0%	43.5%
North <sup>1</sup>	32.6%	25.0%
South <sup>2</sup>	21.1%	27.0%
Unincorporated/Unknown	3.3%	4.5%

<sup>1</sup>Includes all Fulton County cities north of Atlanta (Alpharetta, Johns Creek, Milton, Mountain Park, Roswell, Sandy Springs.) <sup>2</sup>Includes all cities south of Atlanta (Chattahoochee Hills, College Park, East Point, Fairburn, Hapeville, Palmetto, South Fulton, and Union City) \***New cases:** Cases diagnosed in the past 2 weeks only (between 8/4/21 – 8/17/21).

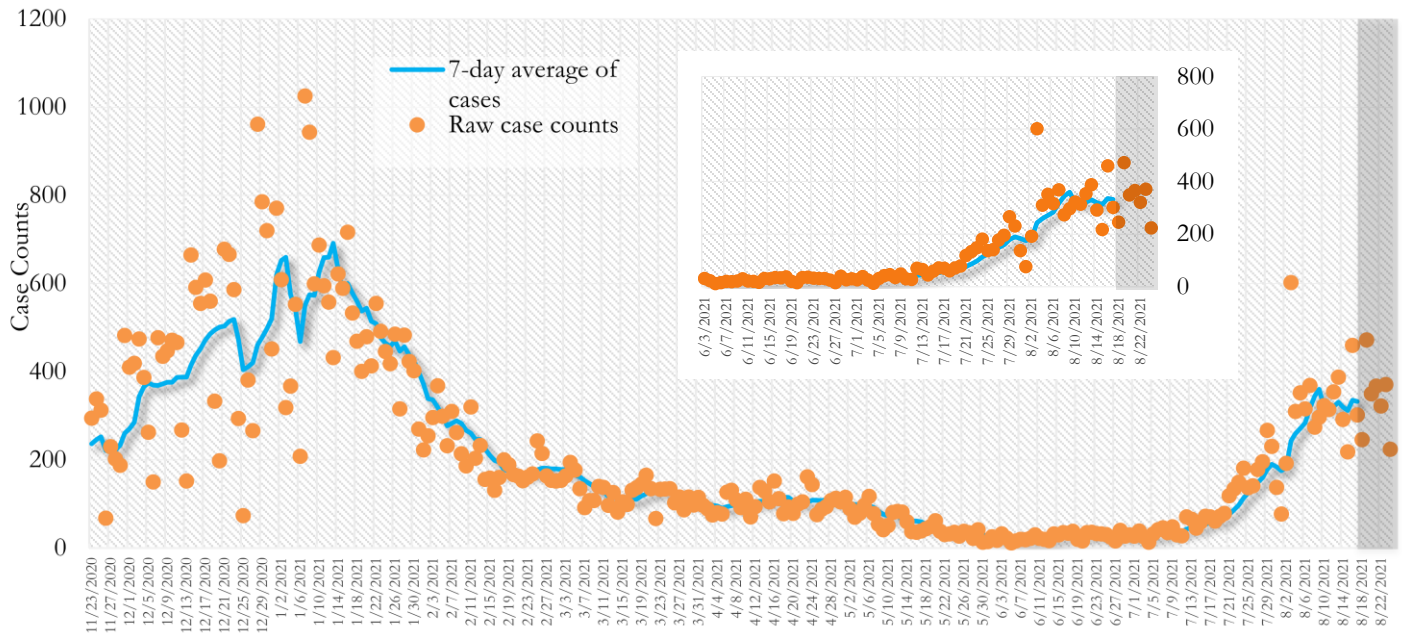
**In the recent two week reporting period (8/4-8/17), there were more new cases of COVID-19 in Fulton County than the previous two weeks (7/21-8/3).**



*\*Delayed a week to account for testing results turnaround time.*

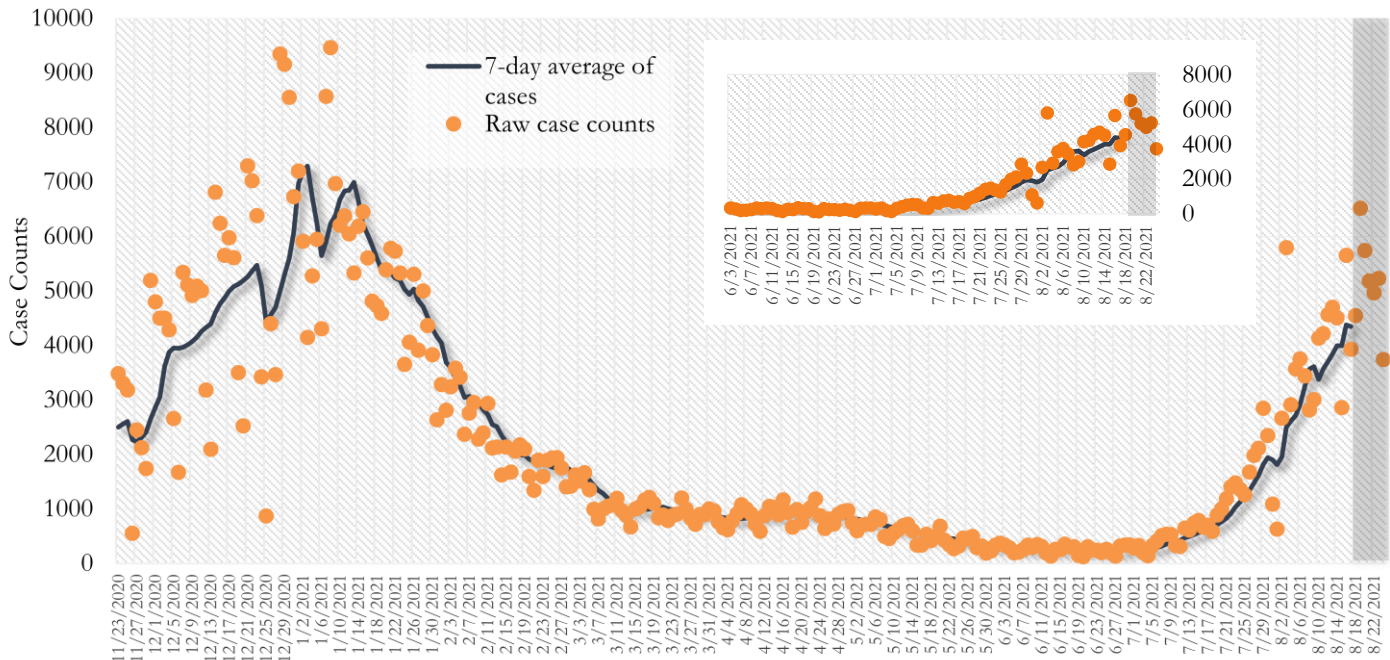
TRENDS IN COVID-19 CASES, HOSPITALIZATIONS AND DEATHS (7-DAY MOVING AVE.)

Fig. 2. New COVID-19 Cases in Fulton County Daily (Averaged over 7 days)



\*Date of collection of first positive sample used (report creation date used where sample collection date is missing). Graph above reflects the trend in COVID-19 diagnosis. Due to the high volume of testing in recent weeks, there have been delays in reporting lab results. Thus, the trend is subject to change as more lab results get added to the state surveillance database.

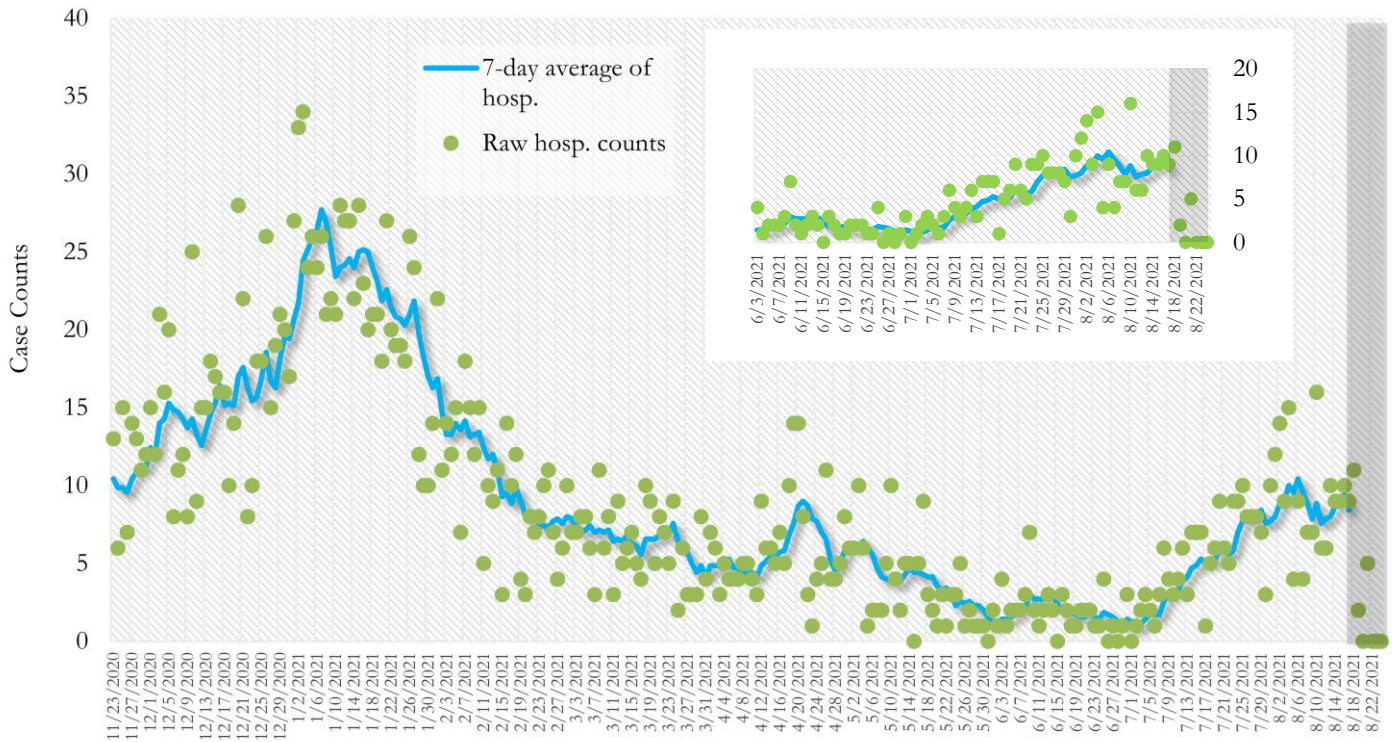
Fig. 3. New COVID-19 Cases in Georgia State Daily (Averaged over 7 days)



\*Date of collection of first positive sample used (report creation date used where sample collection date is missing). Graph above reflects the trend in COVID-19 diagnosis. Due to the high volume of testing in recent weeks, there have been delays in reporting lab results. Thus, the trend is subject to change as more lab results get added to the state surveillance database.

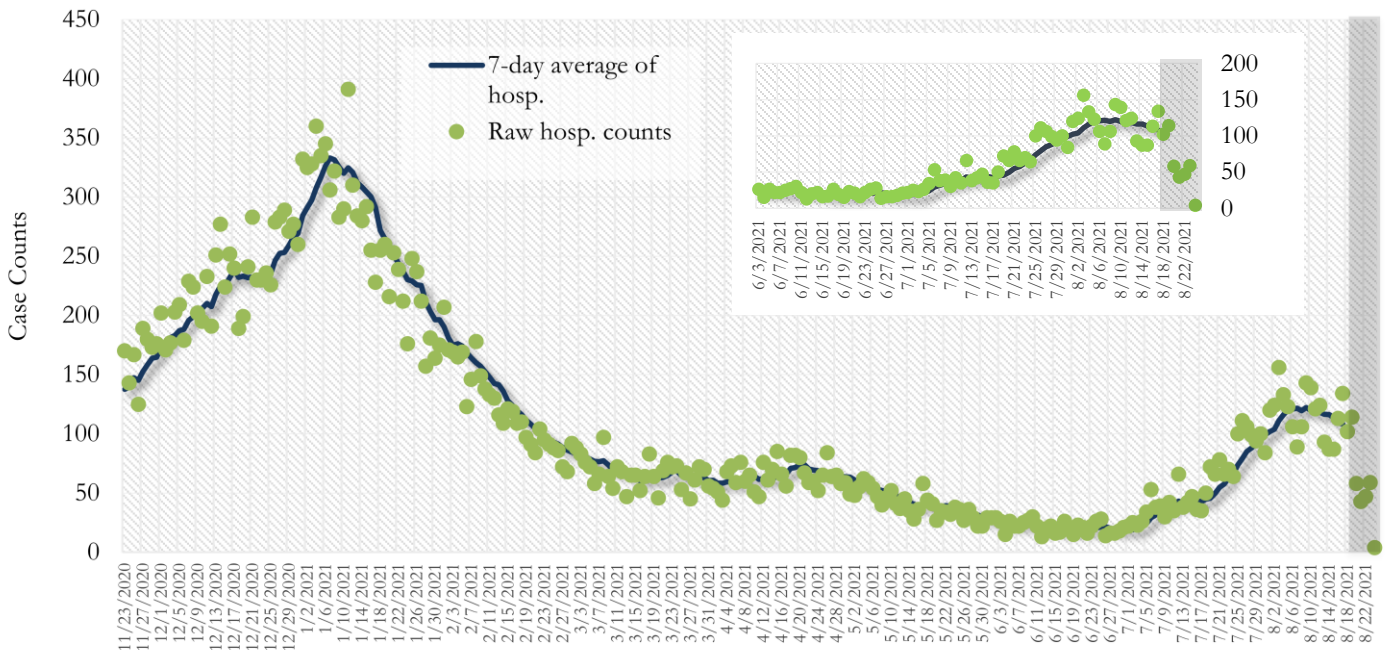


**Fig. 4. COVID-19 Hospitalizations in Fulton County Daily (Averaged over 7 days)**



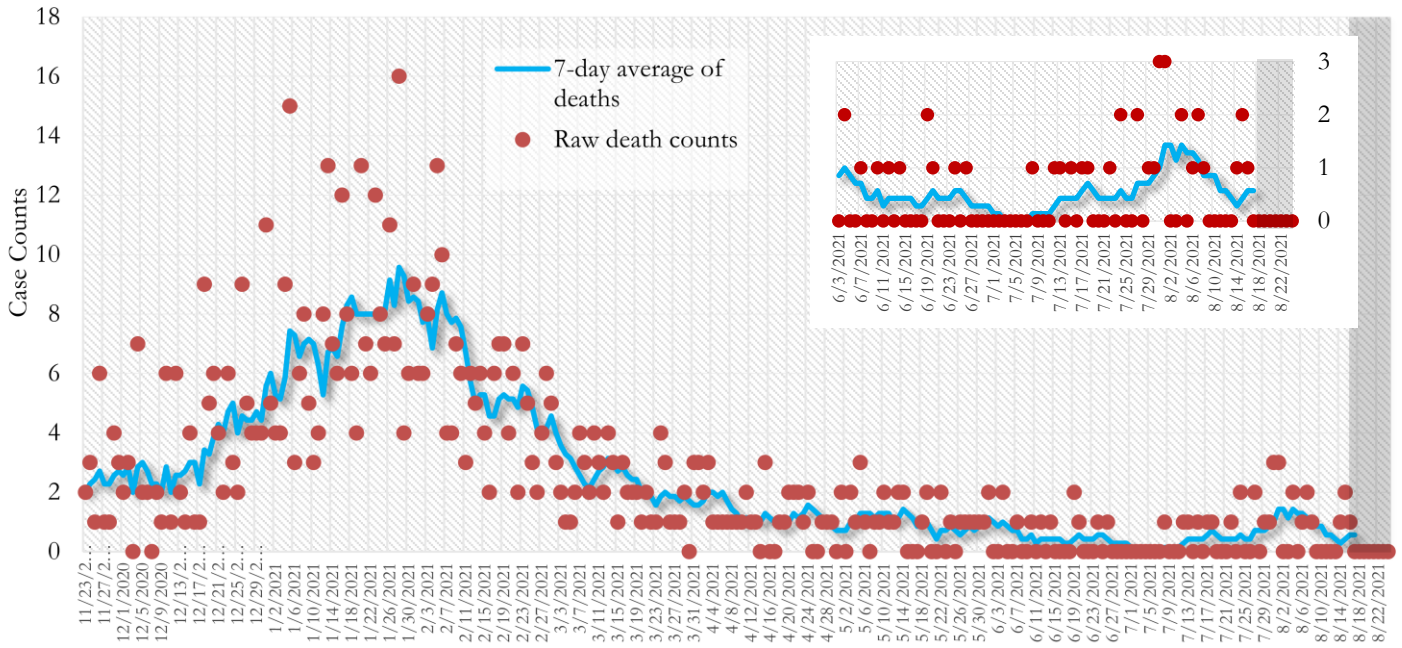
\*Reported date of hospital admission used. Graph above reflects the trend in COVID-19 hospitalizations. Due to the high volume of new cases being added daily, there have been delays in reporting hospitalization data. Thus, the trend is likely to change as more hospitalization data is reported in the state surveillance database.

**Fig. 5. COVID-19 Hospitalizations in Georgia State Daily (Averaged over 7 days)**



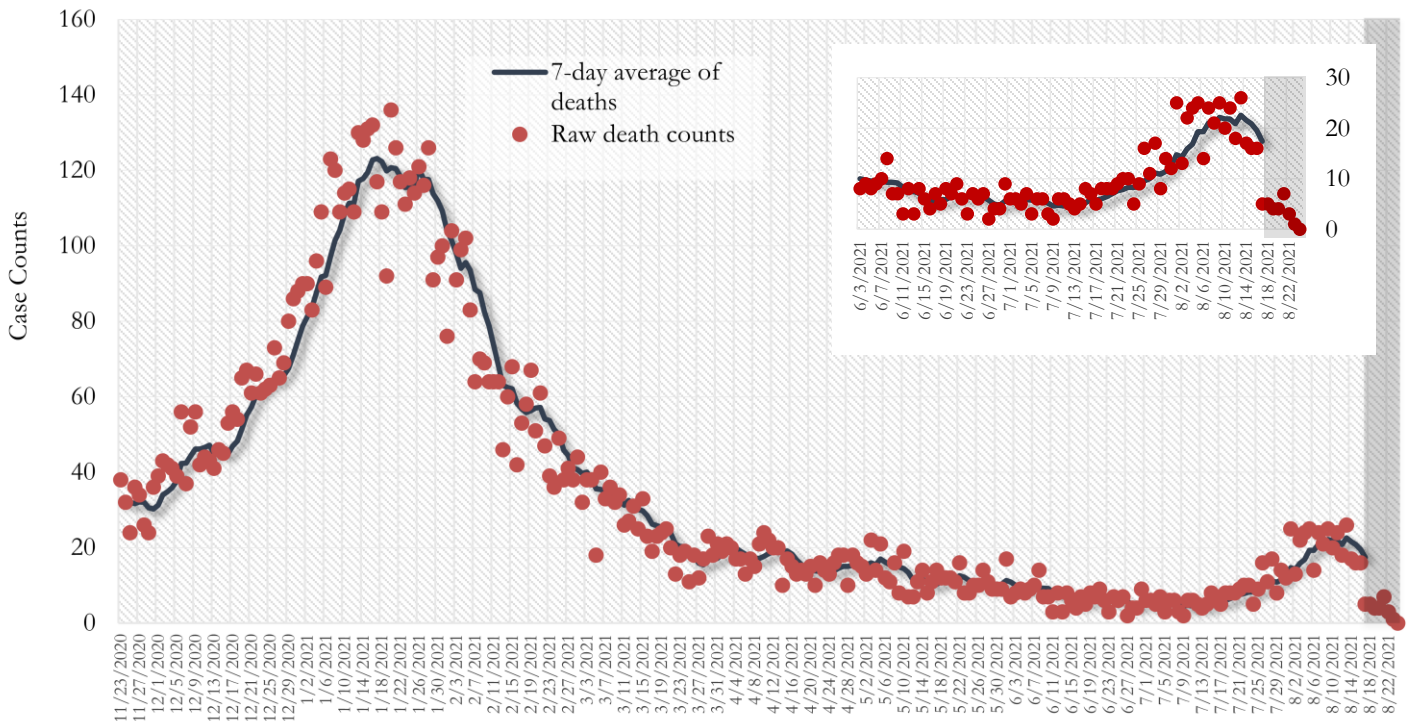
\*Reported date of hospital admission used. Graph above reflects the trend in COVID-19 hospitalizations. Due to the high volume of new cases being added daily, there have been delays in reporting hospitalization data. Thus, the trend is likely to change as more hospitalization data is reported in the state surveillance database.

**Fig. 6. COVID-19 Deaths in Fulton County Daily (Averaged over 7 days)**



\*Reported date of death used. Graph above reflects the trend in deaths attributed to COVID-19. The trend is likely to change as more data on deaths among persons with COVID-19 is reported in the state surveillance database.

**Fig. 7. COVID-19 Deaths in Georgia State Daily (Averaged over 7 days)**



\*Reported date of death used. Graph above reflects the trend in deaths attributed to COVID-19. The trend is likely to change as more data on deaths among persons with COVID-19 is reported in the state surveillance database.

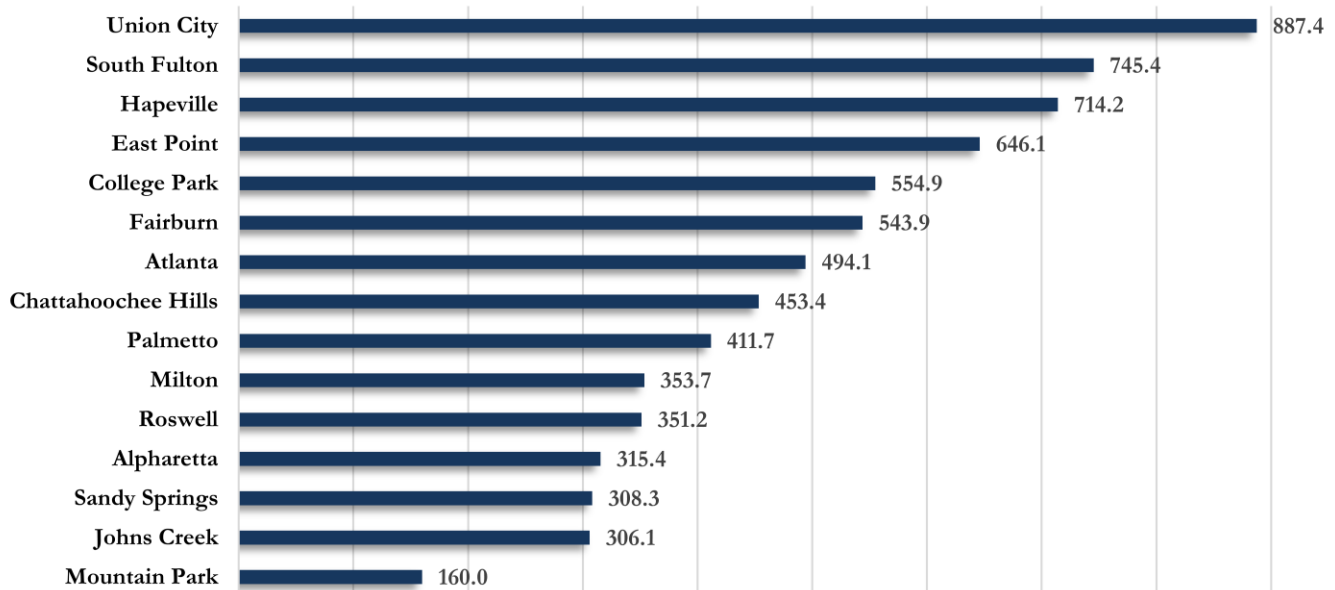


## COVID-19 CASE COUNTS AND RATES BY CITY

	Recent 14-day reporting period <sup>1</sup>	Preceding 14-day reporting period	% Change from preceding 14 days (%) <sup>2</sup>	Incidence Rate <sup>3</sup>
	8/4-8/17	7/21-8/3		
Alpharetta	204	123	↑ 65.9%	315.4
Atlanta	2180	1277	↑ 70.7%	494.1
Chattahoochee Hills	13	<10	↑ 225.0%	453.4
College Park	77	60	↑ 28.3%	554.9
East Point	226	124	↑ 82.3%	646.1
Fairburn	80	64	↑ 25.0%	543.9
Hapeville	47	25	↑ 88.0%	714.2
Johns Creek	256	122	↑ 109.8%	306.1
Milton	135	66	↑ 104.5%	353.7
Mountain Park	<10	<10	-	160.0
Palmetto	18	31	↓ 41.9%	411.7
Roswell	331	176	↑ 88.1%	351.2
Sandy Springs	325	196	↑ 65.8%	308.3
South Fulton	709	364	↑ 94.8%	745.4
Union City	186	117	↑ 59.0%	887.4
Unknown	226	42	-	-

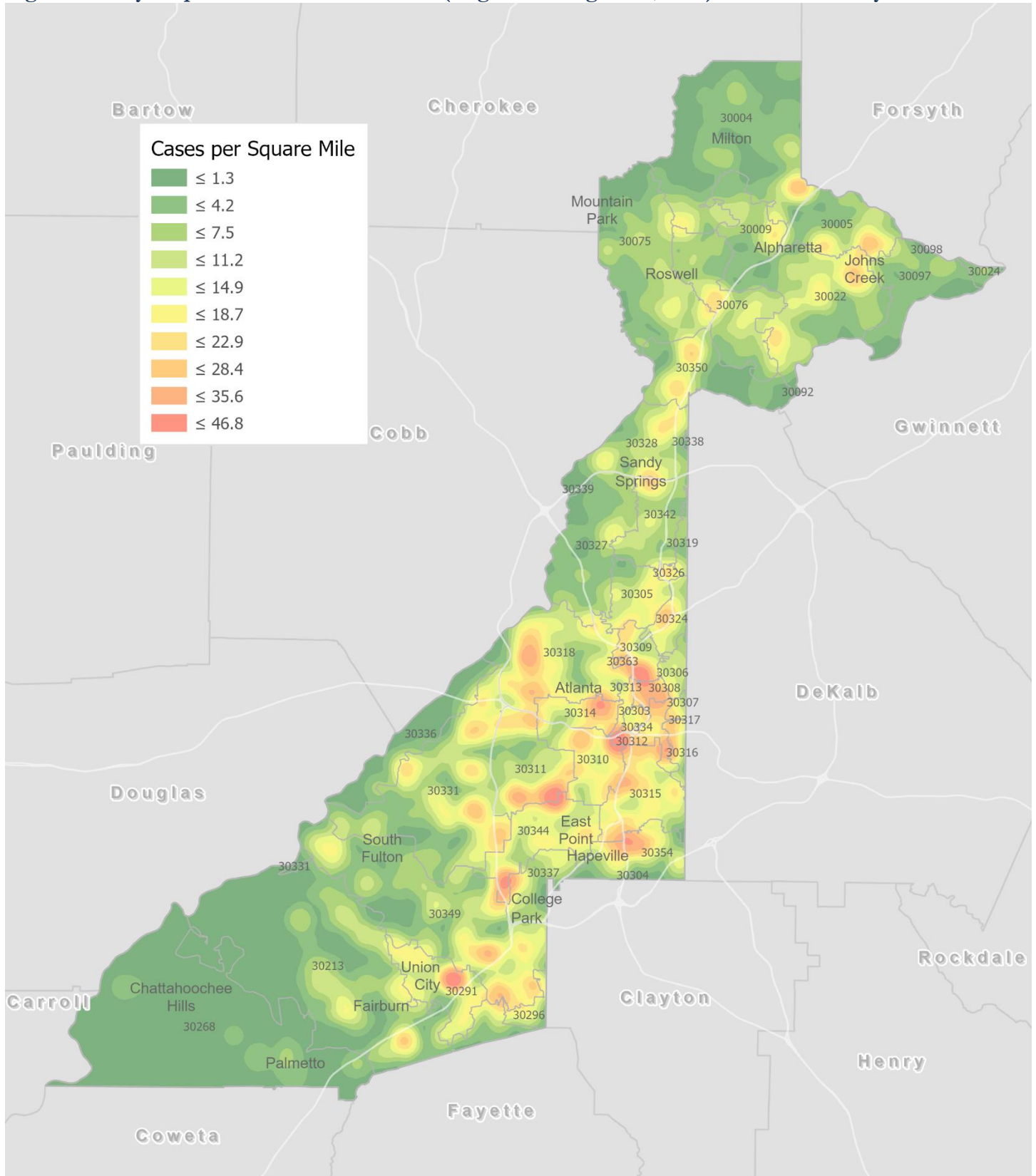
<sup>1</sup>**New cases:** Cases diagnosed in most recent 14 days (based on reported dates of positive sample collection). To allow for lag in reporting results of new diagnoses from samples collected in the most recent week, data used for incident diagnoses analyses were moved back by one week. <sup>2</sup>**% change:** These reflect the percentage increase or decrease in new diagnoses between the 14 days preceding the most recent 7 days and the 14 days preceding that. <sup>3</sup>**(Incidence) Rate:** Rate of new diagnoses in the last 14 day period preceding the immediate past week. **\*\*Data cleaning** (either during case interviews or address geo-coding) may lead to reassignment of few cases from one territory to another based on their corrected addresses. These may appear as "decreases" when compared to the previous counts. These do not reflect errors in the data collection or analysis process but only reflect the minor day-to-day fluctuations in case counts that arise in an evolving public health database like COVID's. **Note: All data reported are preliminary and subject to change.**

Fig. 8. Incidence Rates by Fulton City for Recent 14-day Reporting Period



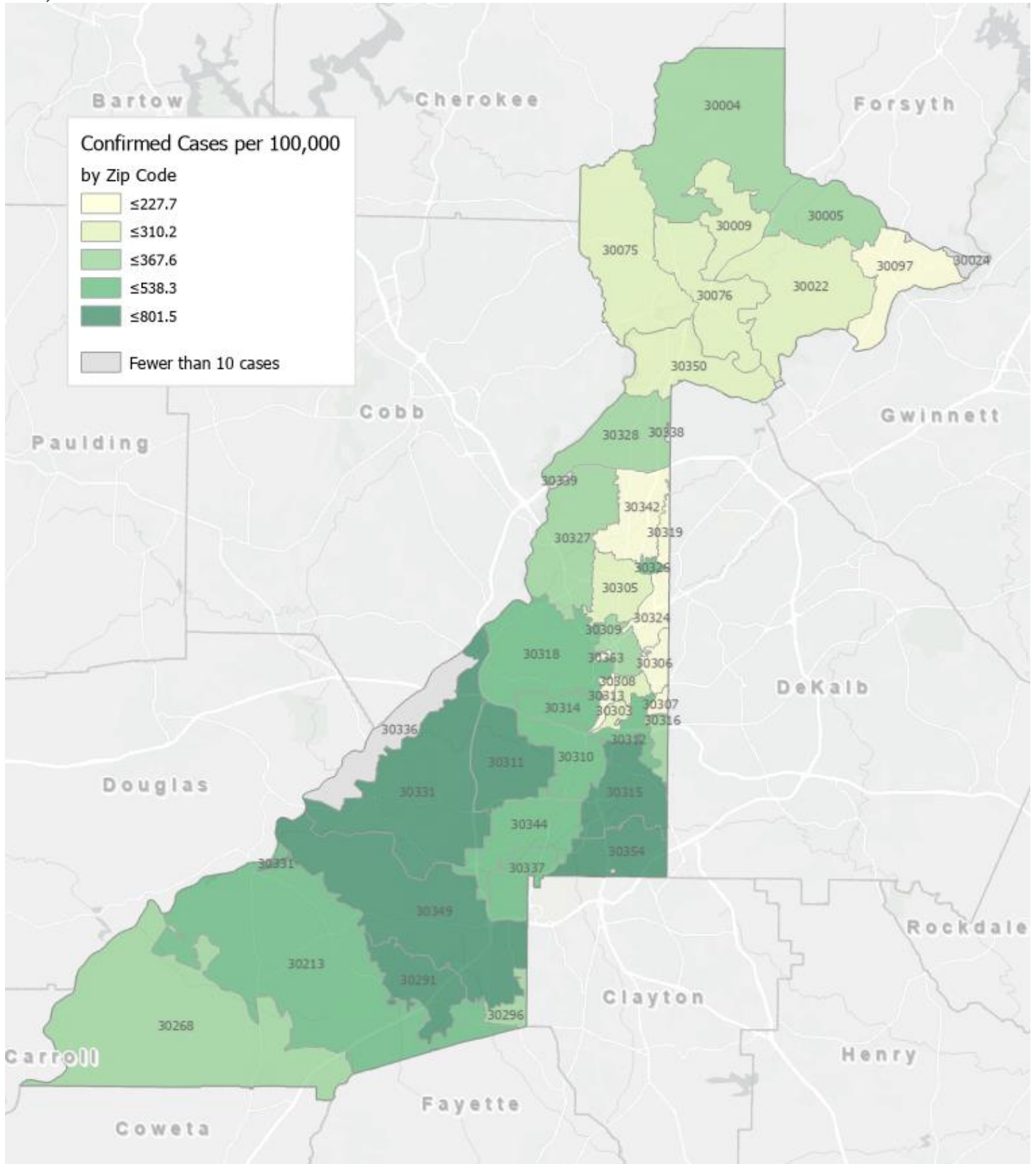
\*Rates shown are per 100,000 persons | All data shown are preliminary and are subject to change as testing results get updated.

Fig. 9. Density Map – New COVID-19 Cases (August 4 – August 17, 2021) in Fulton County



**New COVID-19 cases:** Cases diagnosed in most recent 14 days (based on reported dates of positive sample collection). To allow for lag in reporting results of positive cases from samples collected in the immediate past 7 days, data used for incident diagnoses analyses are moved back by one week. Map reflects new COVID-19 cases diagnosed between August 4<sup>th</sup> and August 17<sup>th</sup>, 2021 across Fulton County, excluding LTCF cases.

Fig. 10. New COVID-19 Diagnoses Rates (per 100,000 population) by Zip Code (August 4 – August 17, 2021)



\*Rates shown are per 100,000 populations.

**New COVID-19 cases:** Cases diagnosed in most recent 14 days (based on reported dates of positive sample collection). To allow for lag in reporting results of positive cases from samples collected in the immediate past 7 days, data used for incident diagnoses analyses are moved back by one week. Data used excludes outbreak-related cases at long-term care facilities and map shown reflects only the new non-LTCF cases diagnosed between the dates shown in map title. See page 8 for zip code break down table.

## COVID-19 NEW CASE<sup>1</sup> COUNTS BY ZIP CODE

Zip Code	Recent 14-day reporting period (8/4– 8/17)	Previous 14-day reporting period (7/21– 8/3)	% Change between reporting periods <sup>2</sup>
<b>All Fulton</b>	<b>5015</b>	<b>2793</b>	<b>↑ 79.6%</b>
30004	193	90	↑ 114.4%
30005	124	45	↑ 175.6%
30009	62	34	↑ 82.4%
30022	230	135	↑ 70.4%
30023	0	0	-
30024	<10	<10	-
30075	175	91	↑ 92.3%
30076	139	71	↑ 95.8%
30080	<10	0	-
30097	42	22	↑ 90.9%
30098	0	<10	↓ 100.0%
30135	0	0	-
30138	0	0	-
30139	0	0	-
30213	236	163	↑ 44.8%
30268	36	37	↓ 2.7%
30291	194	113	↑ 71.7%
30296	25	11	↑ 127.3%
30301	<10	0	-
30303	22	<10	↑ 175.0%
30305	87	63	↑ 38.1%
30306	38	23	↑ 65.2%
30307	21	16	↑ 31.3%
30308	64	38	↑ 68.4%
30309	94	52	↑ 80.8%
30310	157	106	↑ 48.1%
30311	226	118	↑ 91.5%
30312	147	83	↑ 77.1%
30313	25	27	↓ 7.4%
30314	106	48	↑ 120.8%
30315	227	119	↑ 90.8%
30316	57	30	↑ 90.0%
30318	328	207	↑ 58.5%
30319	12	<10	↑ 140.0%
30321	<10	0	-
30324	69	61	↑ 13.1%
30326	26	21	↑ 23.8%
30327	102	44	↑ 131.8%
30328	129	72	↑ 79.2%
30331	418	197	↑ 112.2%
30334	<10	<10	-
30336	12	<10	↑ 140.0%
30337	76	55	↑ 38.2%

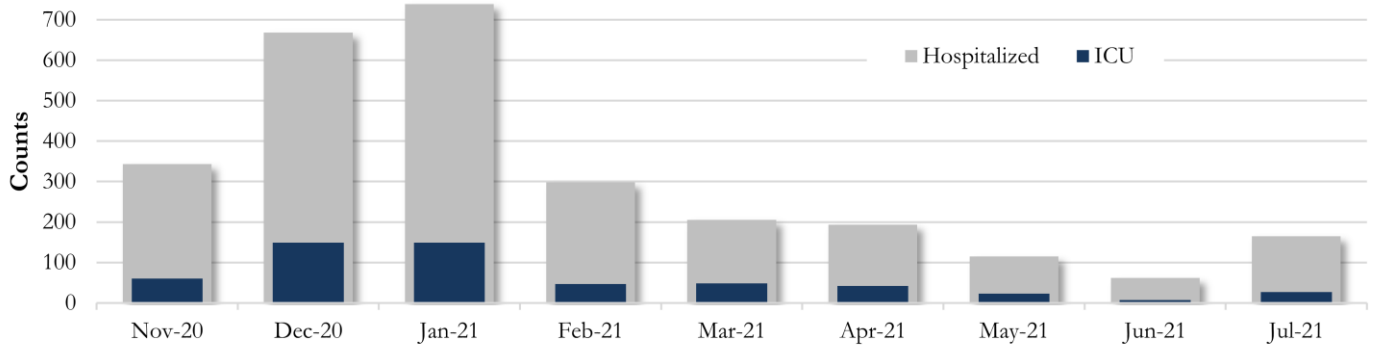
Zip Code	Recent 14-day reporting period (8/4– 8/17)	Previous 14-day reporting period (7/21– 8/3)	% Change between reporting periods
30338	<10	0	-
30339	41	<10	↑ 355.6%
30340	0	0	-
30341	<10	0	-
30342	106	71	↑ 49.3%
30344	207	114	↑ 81.6%
30345	<10	<10	-
30349	426	225	↑ 89.3%
30350	110	60	↑ 83.3%
30354	141	72	↑ 95.8%
30358	0	0	-
30363	15	<10	↑ 66.7%
30374	<10	<10	-
30606	0	0	-
31131	0	0	-
31150	0	0	-
Unknown	50	17	-

<sup>1</sup>**New cases:** Cases diagnosed in most recent 28 days (based on reported dates of positive sample collection). To allow for lag in reporting results of new diagnoses from samples collected in the most recent week, data used for incident diagnoses analyses were moved back by one week. <sup>2</sup>**Percent change:** These reflect the percentage increase or decrease of new diagnoses between the 14 days preceding the past 7 days and the 14 days preceding that. Changes in ZIP codes with less than 10 cases in both 2 week intervals are not reported.

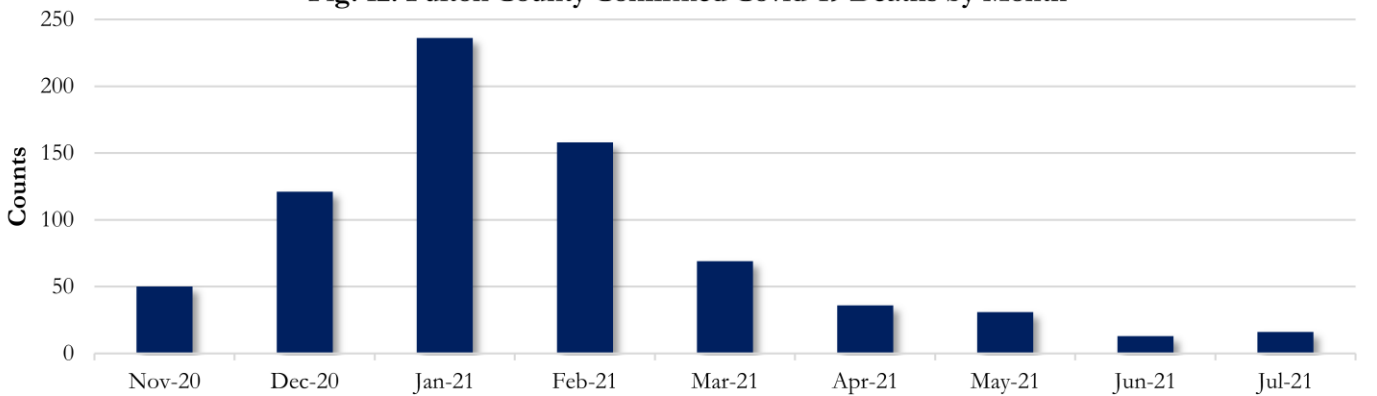


**COVID-19 HOSPITALIZATIONS, ICU ADMISSIONS AND DEATHS IN FULTON**

**Fig. 11. Fulton County Covid-19 Cases Hospitalized and Admitted to ICU by Month**

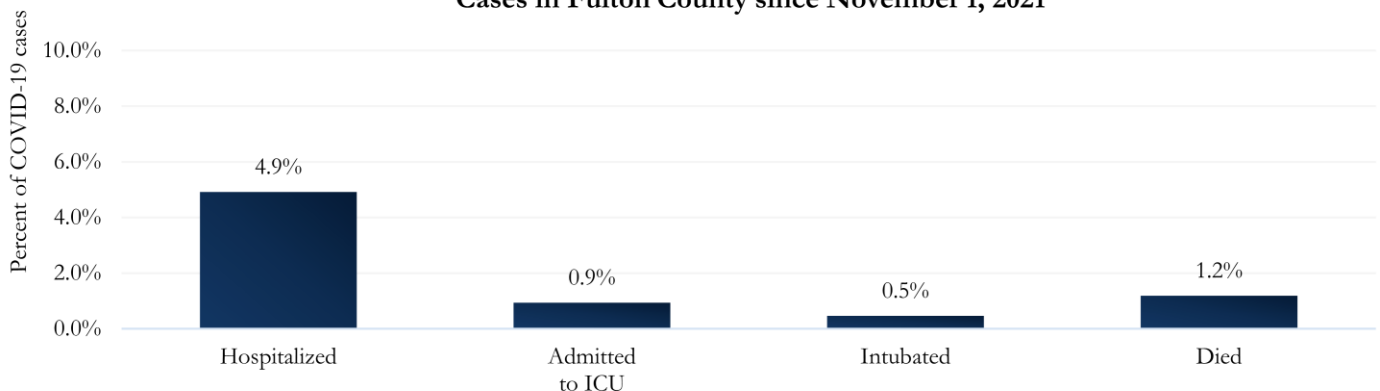


**Fig. 12. Fulton County Confirmed Covid-19 Deaths by Month**



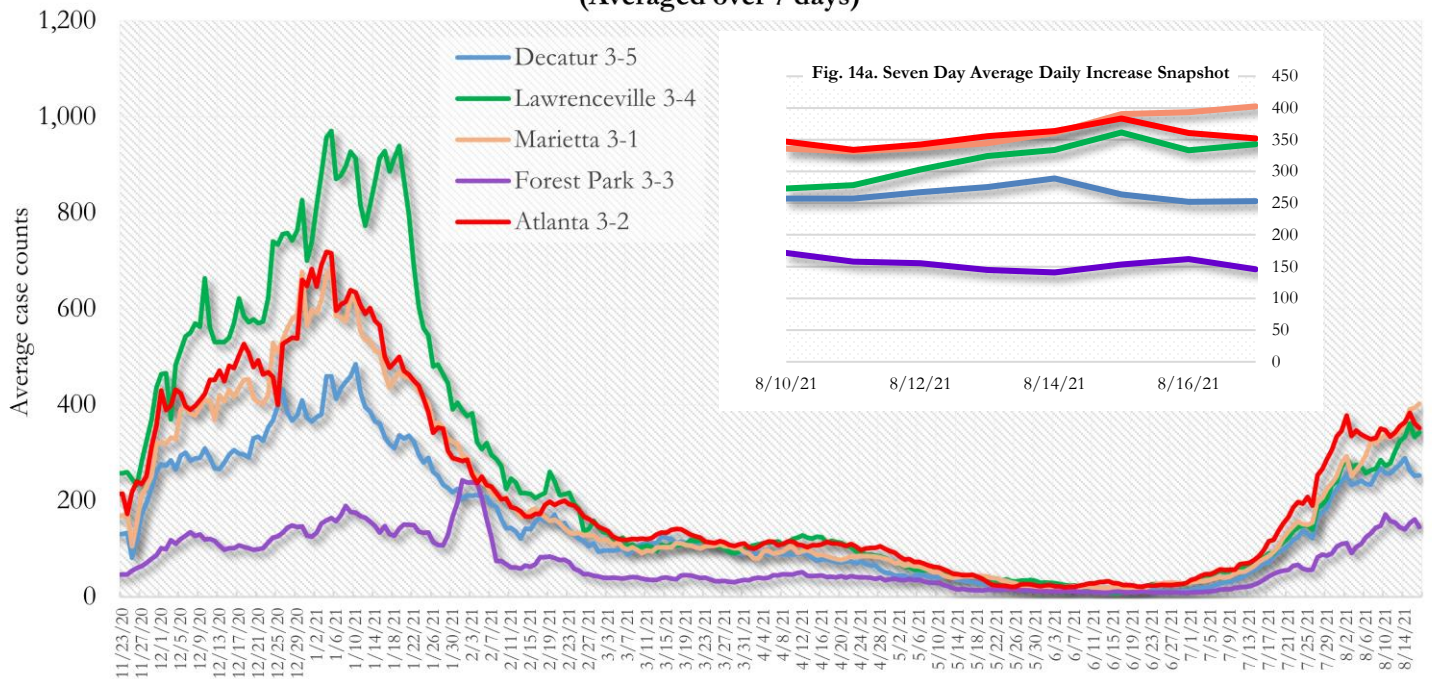
Values for July 2021 in figures 13 and 14 are subject to change as more hospitalizations, ICU admissions, and deaths get reported to state and local entities.

**Fig. 13. Hospitalizations, ICU Admissions, Intubations, and Deaths among all Covid-19 Cases in Fulton County since November 1, 2021**



**COVID-19 CASE TRENDS IN FULTON AND SURROUNDING DISTRICTS**

**Fig. 14. Daily Case Counts for Atlanta Metro Districts  
(Averaged over 7 days)**



## DEMOGRAPHIC DISTRIBUTIONS – COVID-19 CASES AND DEATHS

**Table A** - Cumulative and recent confirmed Covid-19 case and death counts by gender, age, and race/ethnicity in Fulton County, Georgia. Past 28 day period refers to July 21 – August 17, 2021

	Total Confirmed Cases	% of Total Cases	Confirmed Cases past 28 days	% of Confirmed Cases past 28 days	Total Confirmed Deaths	% of Total Deaths	Confirmed Deaths past 28 days	% of Confirmed Deaths past 28 days
<b>TOTAL</b>	<b>95238</b>		<b>7808</b>		<b>1404</b>		<b>23</b>	
Female	50443	53.0%	4291	55.0%	671	47.8%	13	56.5%
Male	44324	46.5%	3473	44.5%	733	52.2%	10	43.5%
Unknown*	471	<1%	44	<1%	0	-	0	-
0-9	4226	4.4%	814	10.4%	0	-	0	-
10-19	10422	10.9%	1167	14.9%	<10	<1%	0	-
20-29	21289	22.4%	1523	19.5%	<10	<1%	0	-
30-39	18342	19.3%	1576	20.2%	29	2.1%	0	-
40-49	14424	15.1%	1095	14.0%	44	3.1%	<10	13.0%
50-59	12571	13.2%	794	10.2%	131	9.3%	<10	17.4%
60-69	7318	7.7%	466	6.0%	257	18.3%	<10	8.7%
>70	6580	6.9%	358	4.6%	937	66.7%	14	60.9%
Unknown*	66	<1%	15	<1%	0	-	0	-
Asian, NH	3545	3.7%	206	2.6%	24	1.7%	0	-
Black, NH	41519	43.6%	4363	55.9%	869	61.9%	13	56.5%
White, NH	30736	32.3%	1612	20.6%	446	31.8%	<10	34.8%
Hispanic, all races	9762	10.3%	494	6.3%	59	4.2%	<10	8.7%
Other, NH	3160	3.3%	224	2.9%	<10	<1%	0	-
Unknown*	6516	6.8%	909	11.6%	0	-	0	-

\*Unknown includes cases not yet interviewed. 28 days delayed by seven to account for lag in reporting lab results. Deaths refer to all persons who had a positive PCR test result for Covid-19 and there is evidence that Covid-19 was the cause of death or a significant contributor to their death.



The following data are updated every two weeks.

Last updated 8/17/2021

Data are from confirmed cases and PCR testing only.

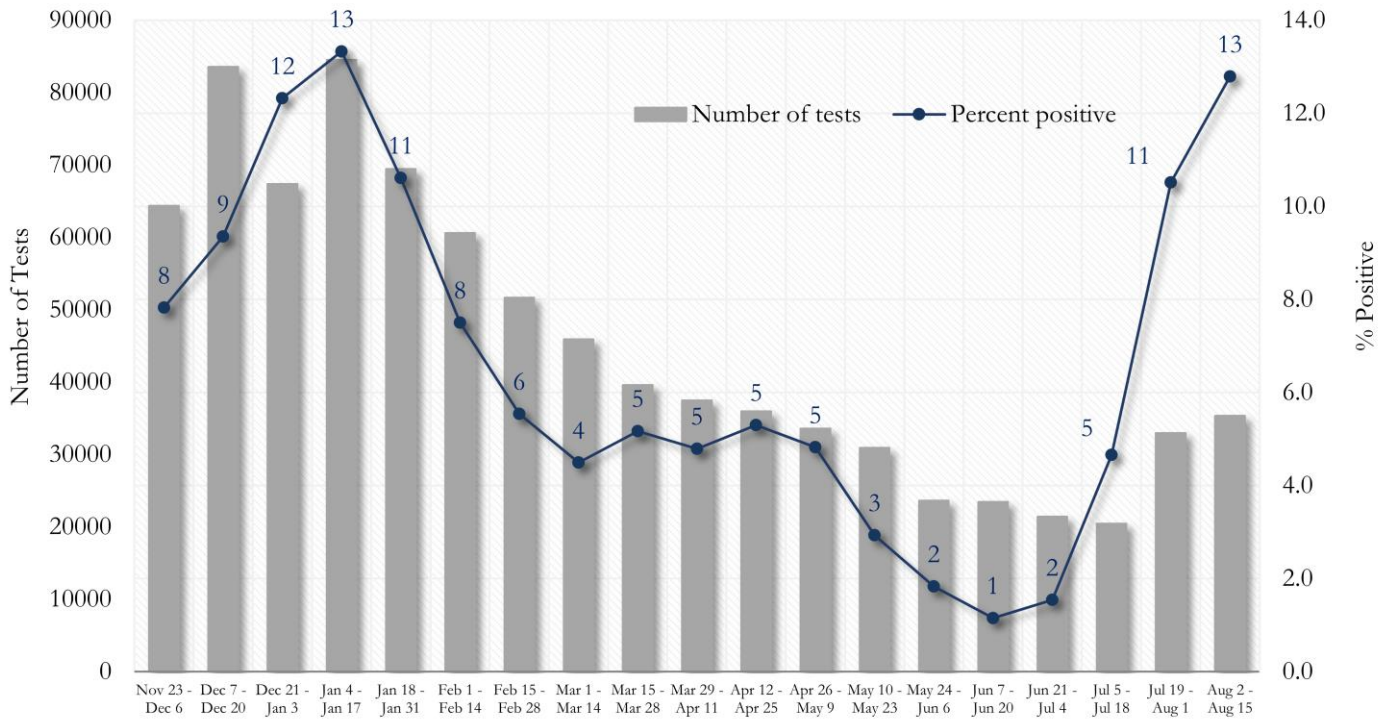
These data are generated using a fixed start date and counted forward in 14-day intervals. Using these time blocks allows for the stability in trends over time and accounts for delays in reporting lab results.

In the interest of keeping the reports concise and useful, the cumulative counts updated on a monthly basis can now be viewed between updates at the Fulton County Board of Health website [here](#).

Please visit the Georgia Department of Public Health Daily Status Report [here](#) for cumulative daily counts.

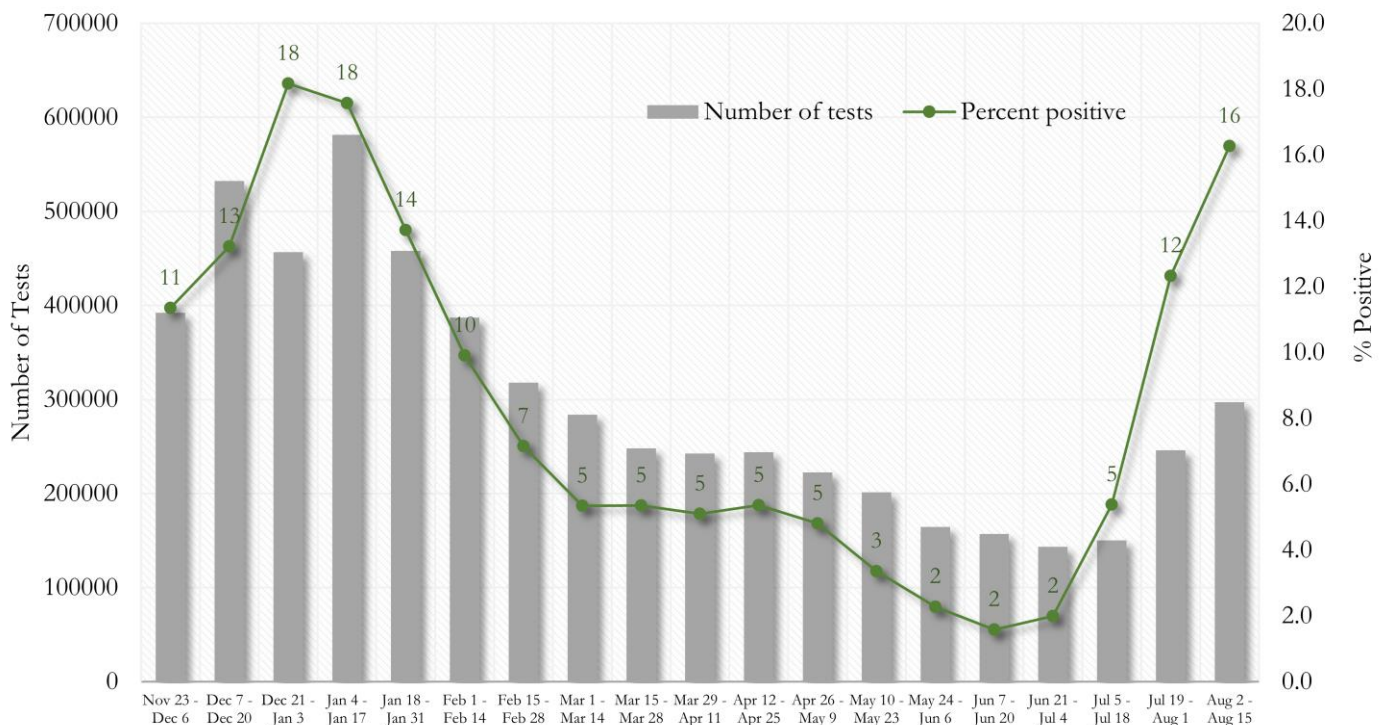
**COVID-19 TESTING AND POSITIVITY IN FULTON COUNTY AND GEORGIA**

**Fig. 15. Trends in Positive COVID-19 Tests in Fulton County by 14-day Periods**



\*Data on Polymerase Chain Reaction (PCR) tests only included.

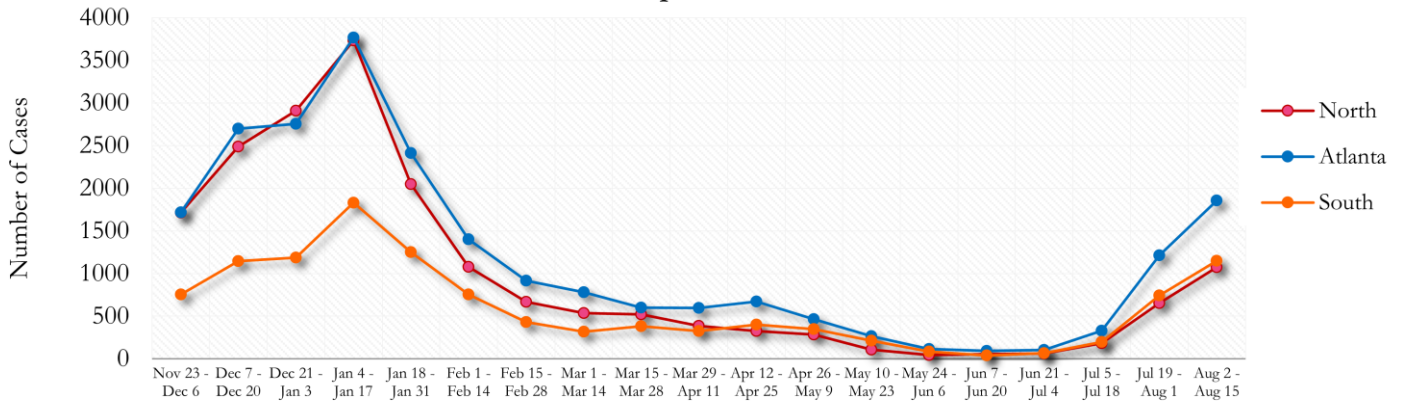
**Fig. 16. Trends in Positive COVID-19 Tests in Georgia by 14-day Periods**



\*Data on Polymerase Chain Reaction (PCR) tests only included.

**TRENDS IN COVID-19 CASES AMONG DEMOGRAPHIC GROUPS (14 DAY PERIODS)**

**Fig. 17. Trends in Geographic distribution of COVID-19 Cases in Fulton County by 14-day periods**

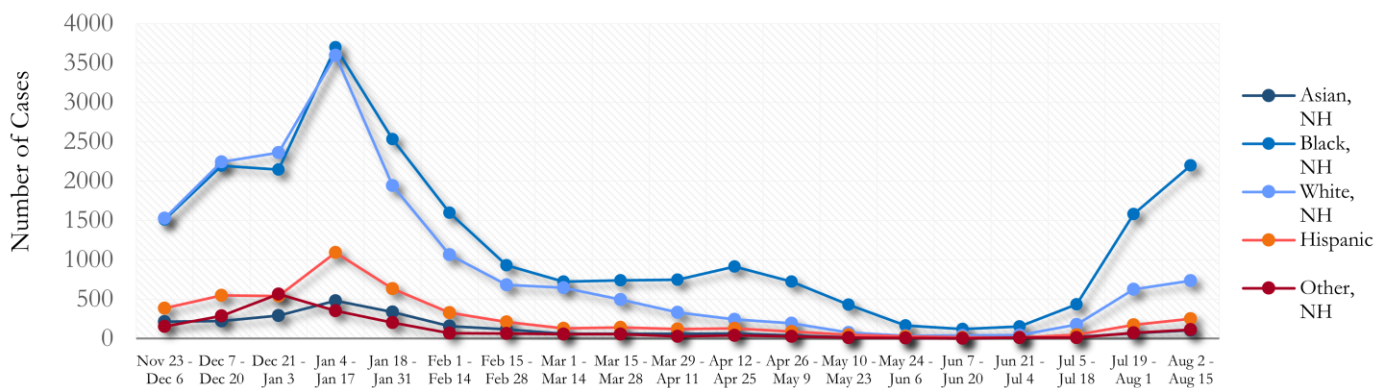


In the past two weeks, Atlanta accounted for the majority of new cases.

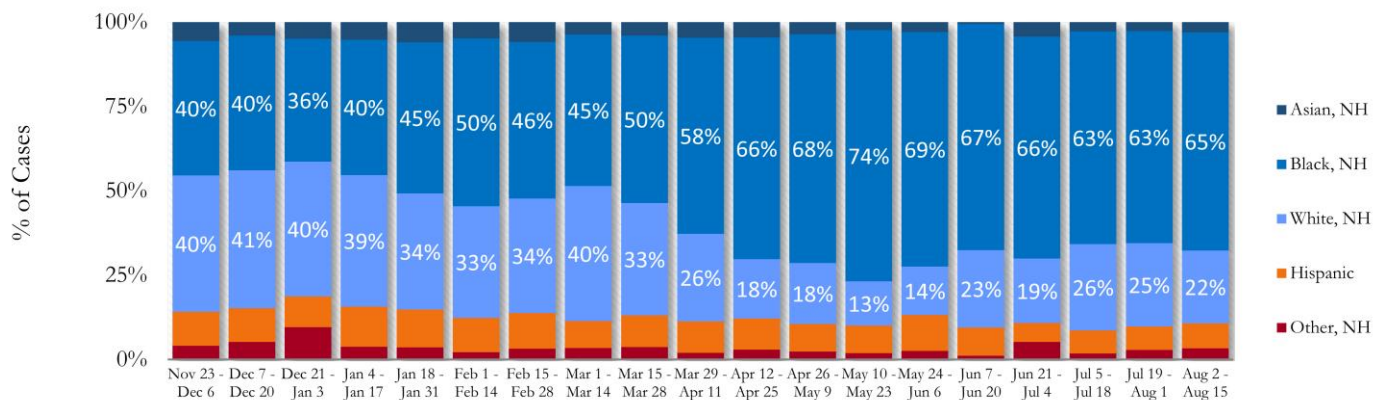
\*North - Includes all Fulton cities north of Atlanta (Alpharetta, Johns Creek, Milton, Mountain Park, Roswell, Sandy Springs)

\*South - Includes all Fulton cities south of Atlanta (Chattahoochee Hills, College Park, East Point, Fairburn, Hapeville, Palmetto, South Fulton, and Union City)

**Fig. 18. Trends in Racial Distribution of COVID-19 Cases in Fulton County by 14-day periods**



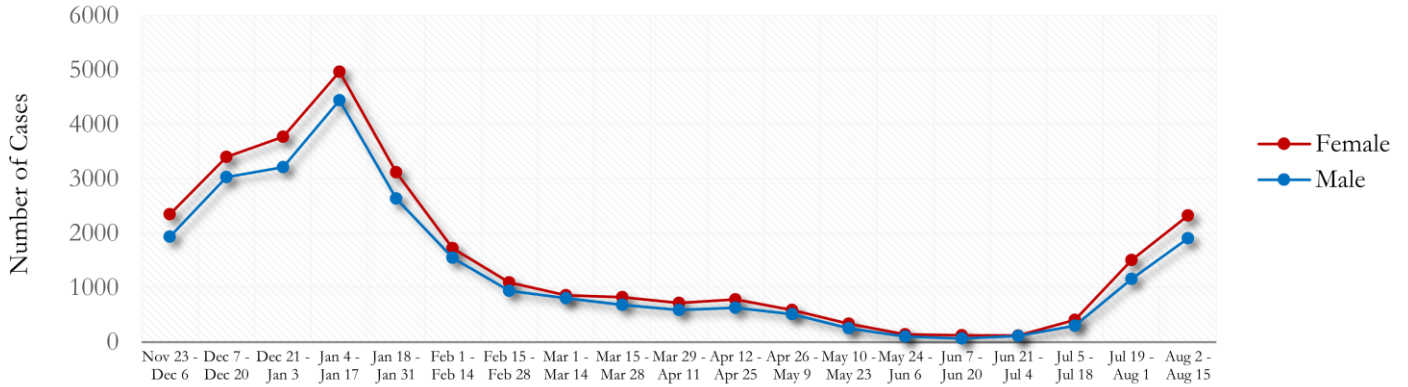
**Fig. 19. Racial Distribution of COVID-19 Cases in Fulton County by 14-day periods**



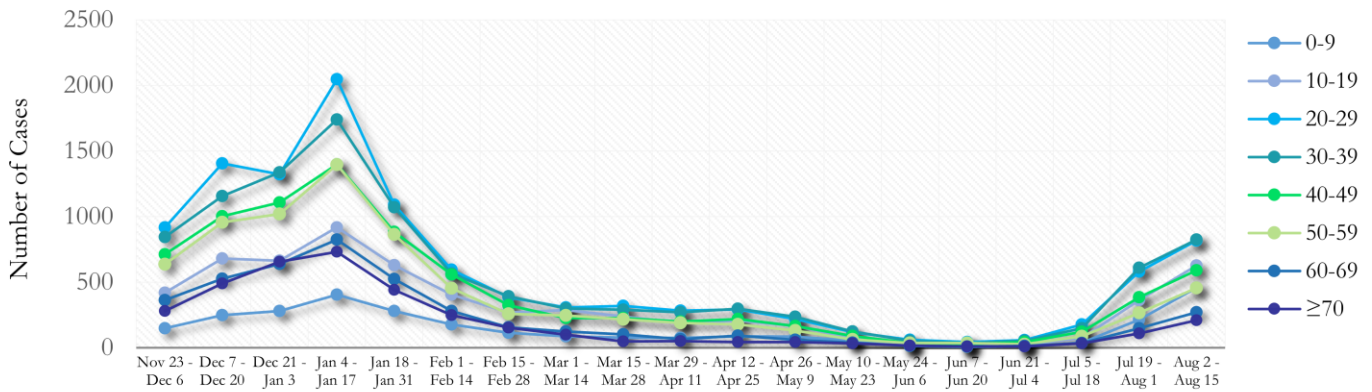
About 7% of all Fulton County COVID cases are missing data on patient race and ethnicity and in the past two weeks, about 20% of cases are missing this data. Percentages do not include the missing data and thus are subject to change as data are cleaned.



**Fig. 20. Trends in Gender Distribution of COVID-19 Cases in Fulton County by 14-day periods**

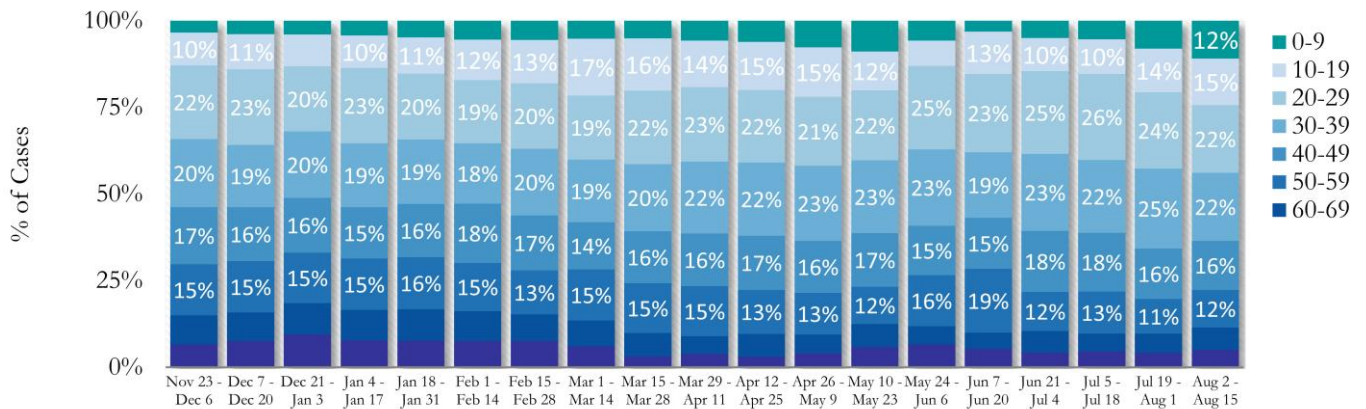


**Fig. 21. Trends in Age Distribution of COVID-19 Cases in Fulton County by 14-day periods**



In the most recent two weeks, 20-29 year olds and 30-39 year olds accounted for the majority of new cases.

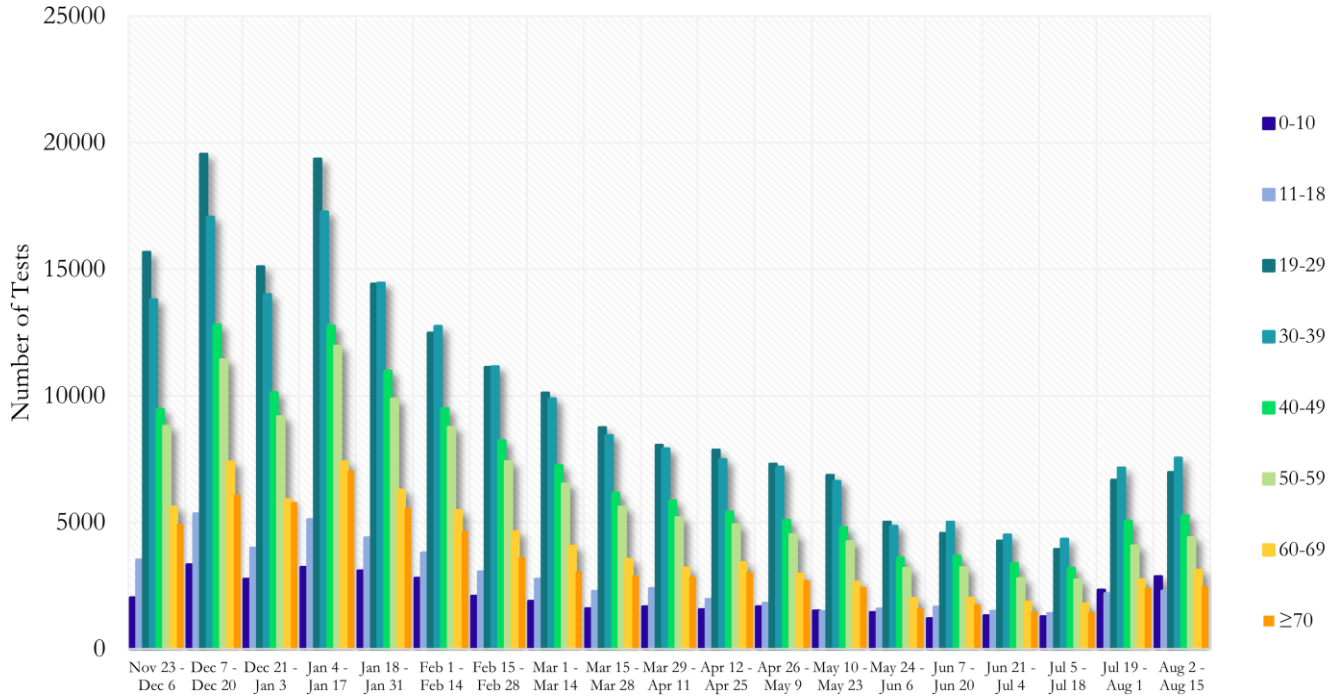
**Fig. 22. Age Distribution of COVID-19 Cases in Fulton County by 14-day periods**



Value labels under 10% are not shown. Percentages do not include the missing data and thus are subject to change as data are cleaned.

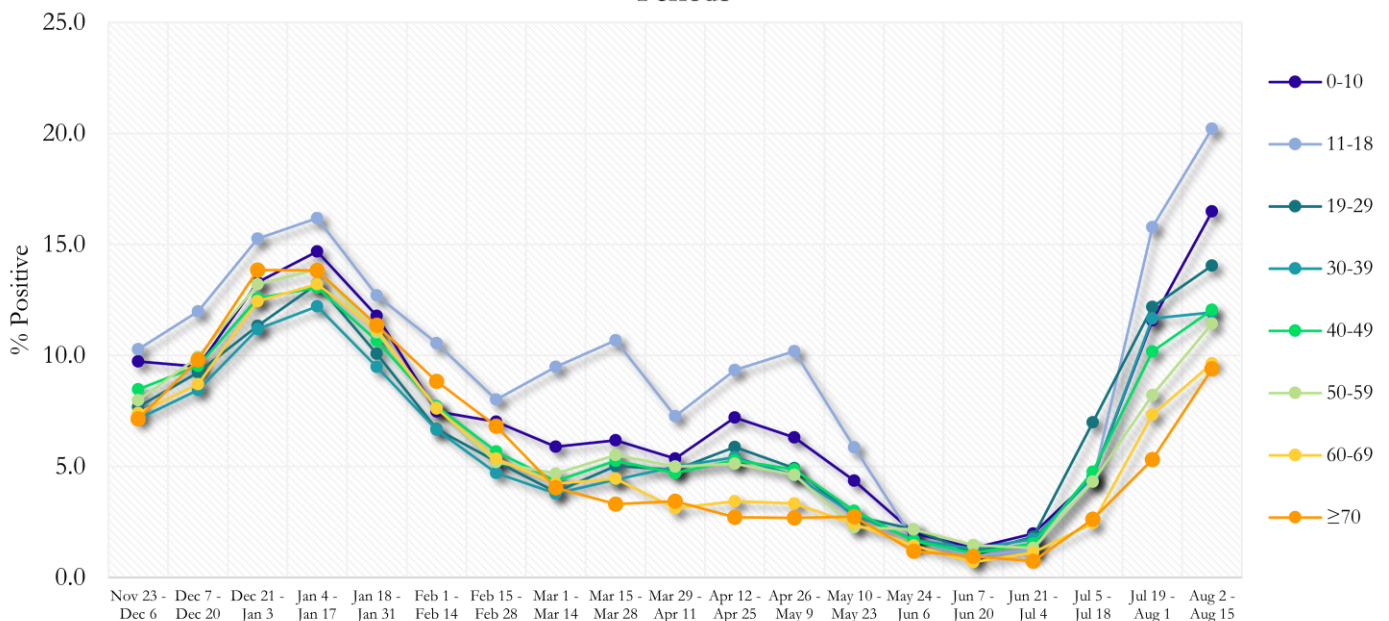
**COVID-19 TESTING AND POSITIVITY IN FULTON COUNTY BY AGE AND RACE**

**Fig. 23. COVID-19 Tests by Age in Fulton County by 14-day Periods**



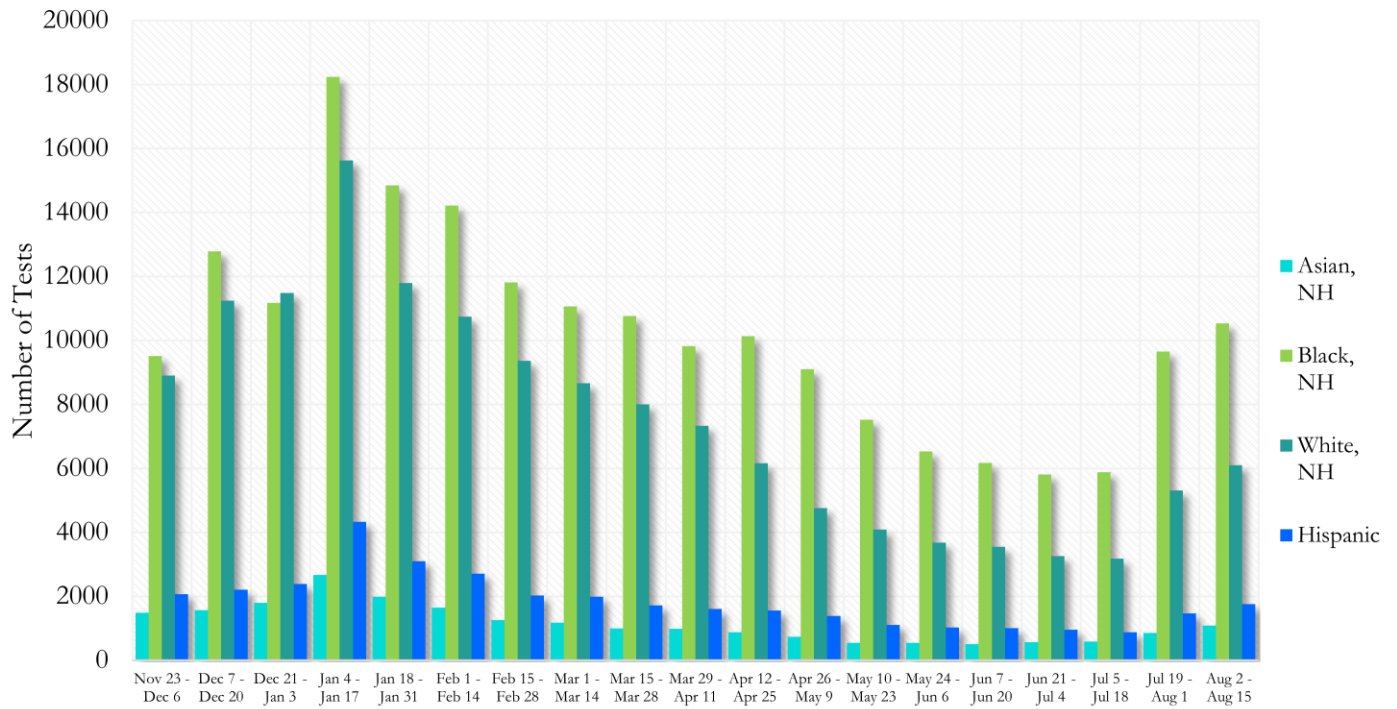
\*Data on Polymerase Chain Reaction (PCR) tests only included.

**Fig. 24. Percent Positive COVID-19 Tests by Age Group in Fulton County by 14-day Periods**



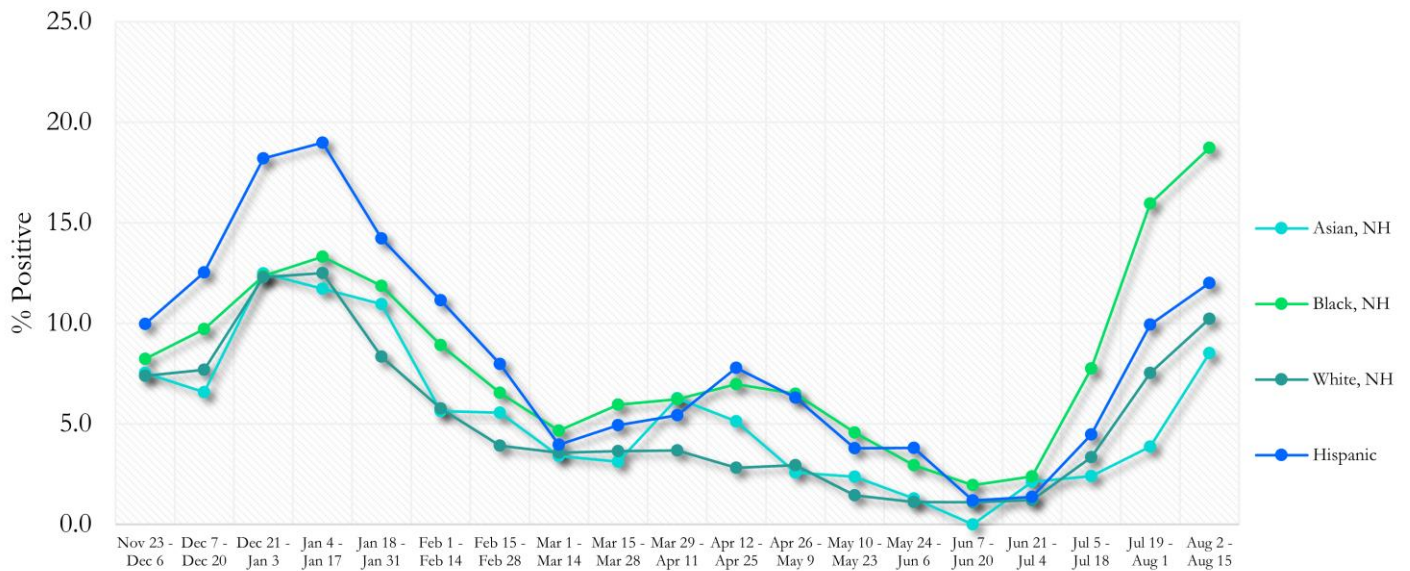
\*Data on Polymerase Chain Reaction (PCR) tests only included.

**Fig. 25. COVID-19 Tests by Race and Ethnicity in Fulton County by 14-day Periods**



\*Data on Polymerase Chain Reaction (PCR) tests only included. For the recent two weeks, 48% of test results did not have race/ethnicity information.

**Fig. 26. Percent Positive COVID-19 Tests by Race and Ethnicity in Fulton County by 14-day Periods**



\*Data on Polymerase Chain Reaction (PCR) tests only included.