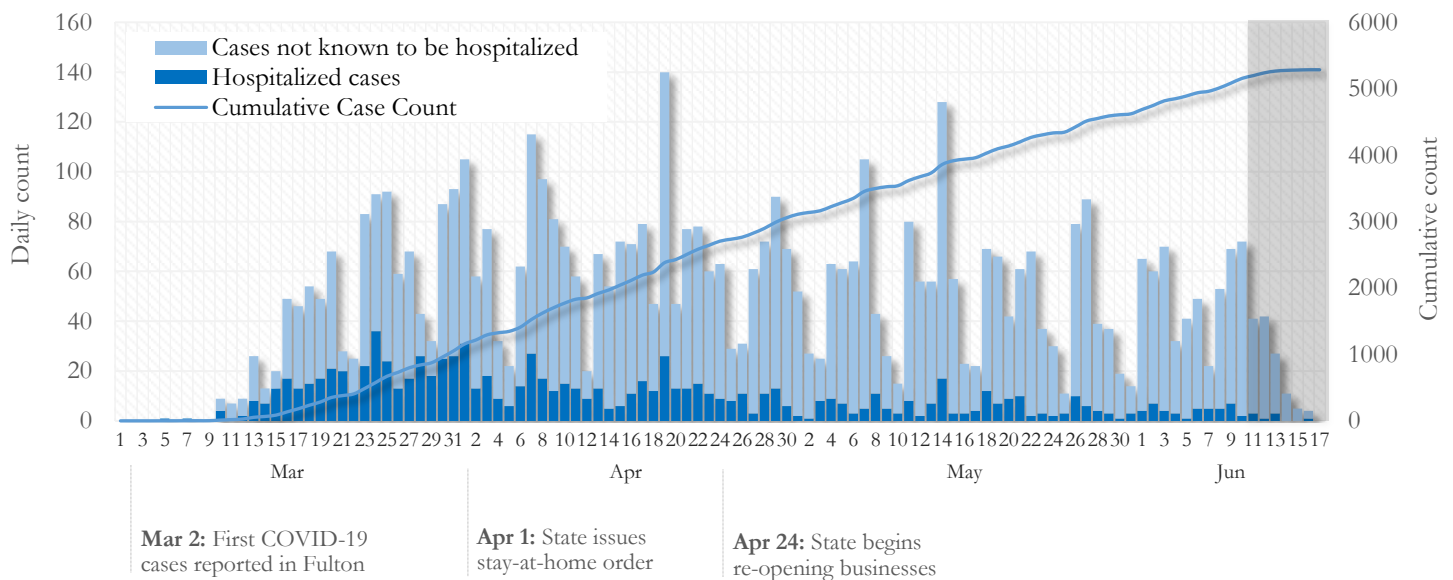


SUMMARY

- As of June 17, 2020, Fulton has recorded **5,286** cases of the 2019 novel coronavirus (COVID-19) and **295** deaths.
- The central portion of the county (Atlanta metro) accounts for 46% of the cumulative case count while the northern and southern parts of the county together account for 44% of the COVID-19 cumulative case count in the county.
- By city, cumulative COVID-19 diagnoses rates range from 165.0 per 100,000 persons (Johns Creek) to 939.9 per 100,000 persons (Union City).
- Among all persons diagnosed with COVID-19 in Fulton County, 18.3% required hospitalization and 5.6% died.
- Residents and staff of long-term care facilities account for 23% of COVID-19 diagnoses and 50% of COVID-19 deaths in Fulton County (6/17/20).

Daily and Cumulative COVID-19 diagnoses in Fulton County, GA (6/17/20)



*Counts shown reflect the number of confirmed cases as of 9:00am on 6/17/20 using the date of first positive sample collection. Where date of sample collection was not available or missing, the date of report creation in GA SENDSS was used instead. **Note:** All data reported are preliminary and subject to change. Delays in data reporting may cause changes in data counts, particularly in the shaded portion.

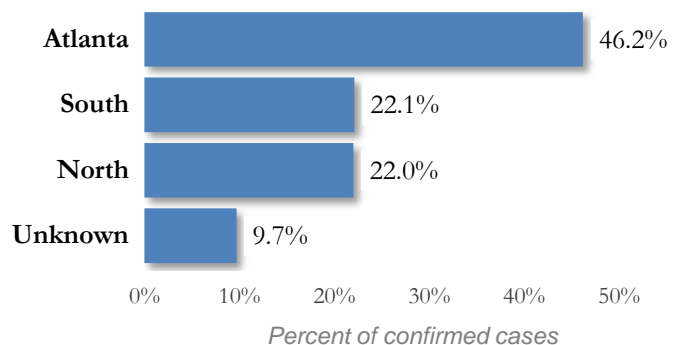
DISTRIBUTION OF COVID-19 DIAGNOSES BY REGION

New cases: 45% of the new COVID-19 cases diagnosed in the past 2 weeks occurred in Atlanta while 29% and 19% occurred in the Northern and Southern regions of the county respectively.

Fulton Region	% Cumulative count	% New cases*
Atlanta	46.2%	45.0%
North ¹	22.0%	28.6%
South ²	22.1%	18.9%
Unincorporated/Unknown	9.7%	7.5%

¹Includes all Fulton County cities north of Atlanta metro (Alpharetta, Milton, Johns Creek, Roswell, Sandy Springs, Mountain Park) | ²Includes all cities south of Atlanta (College Park, Chattahoochee Hills, East Point, Hapeville, Palmetto, South Fulton, Fairburn, and Union City) ***New cases:** Cases diagnosed in the past 2 weeks only (using the date of sample collection).

Distribution of COVID 19 cases by Region (6/17/20)

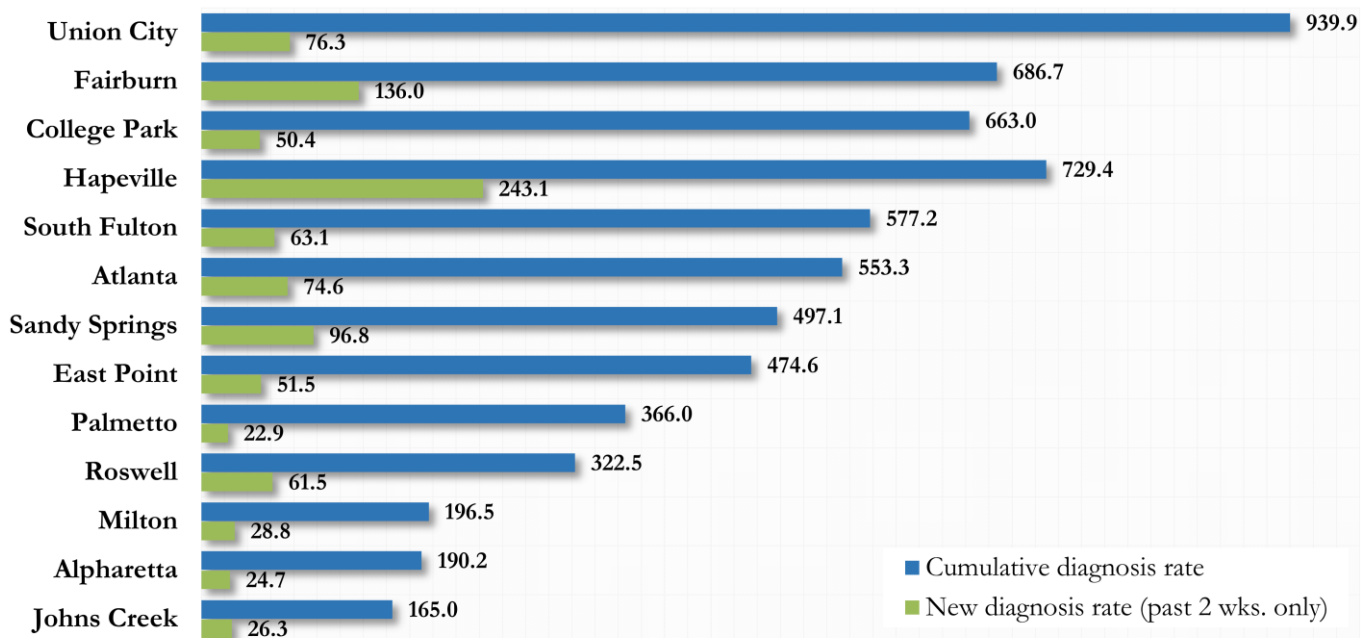


COVID-19 CASE COUNTS AND RATES BY CITY

	Prior (6/15/20)	Current Total (6/17/20)			New Cases (Period: 5/13/20 – 6/10/20) ¹			
	Count	Count	%	Cum. Rate ²	Ist 14 d.	Last 14 d.	% change ³	Rate ⁴ (last 14 d).
Atlanta	2347	2384	46.2%	540.4	404	304	↓ 24.8%	68.9
South Fulton	534	539	10.4%	566.7	56	51	↓ 8.9%	53.6
Sandy Springs	497	504	9.8%	478.1	98	88	↓ 10.2%	83.5
Roswell	281	295	5.7%	313.0	38	46	↑ 21.1%	48.8
East Point	159	162	3.1%	463.2	20	13	↓ 35.0%	37.2
Johns Creek	133	135	2.6%	161.4	11	17	↑ 54.5%	20.3
Union City	190	192	3.7%	916.0	56	18	↓ 67.9%	85.9
Alpharetta	120	122	2.4%	188.6	25	16	↓ 36.0%	24.7
Milton	79	76	1.5%	199.1	<10	10	↑ 42.9%	26.2
Fairburn	96	100	1.9%	679.9	<10	15	↑ 150.0%	102.0
College Park	88	88	1.7%	634.1	49	<10	↓ 89.8%	36.0
Palmetto	15	16	0.3%	366.0	0	<10	-	22.9
Hapeville	40	43	0.8%	653.4	<10	18	↑ 125.0%	273.5
Mountain Park	0	0	0%	-	0	0	-	0
Unknown	494	502	9.7%	-	50	49	-	-

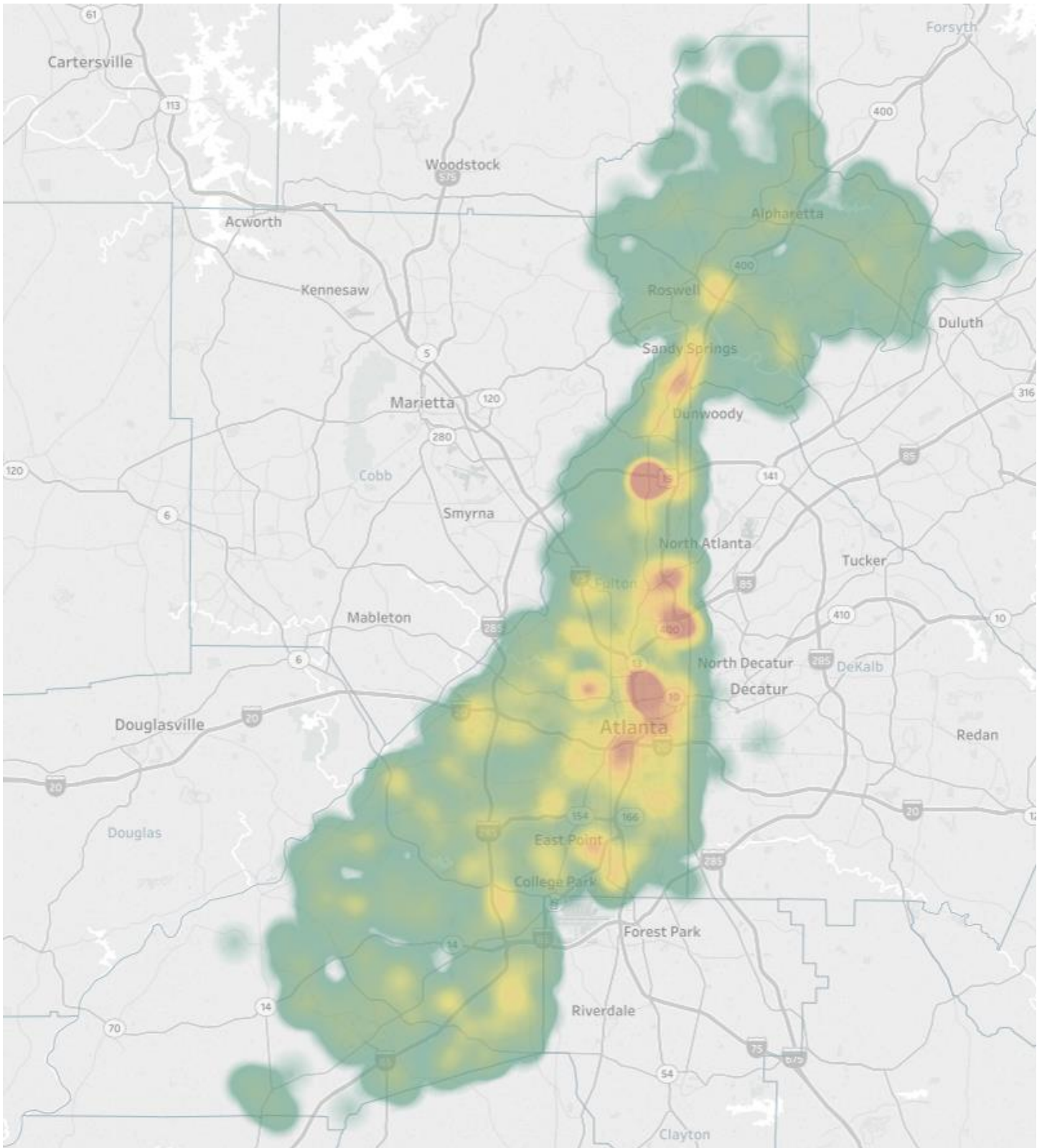
¹**New cases:** Cases diagnosed in most recent 28 days (based on reported dates of positive sample collection). To allow for lag in reporting results of new diagnoses from samples collected in the most recent week, data used for incident diagnoses analyses were moved back by one week. ²**Cumulative diagnosis rate:** Population estimates from US Census Bureau used to calculate cumulative diagnoses rate. All rates shown are per 100,000 persons. ³**Percent change:** These reflect the percentage increase or decrease in new diagnoses between the 14 days preceding the most recent 7 days and the 14 days preceding that. Changes in cities with less than 10 cases in both 2 week intervals are not reported. ⁴**Incidence Rate:** Rate of new diagnoses in the recent past 14 days. **Data cleaning (either during case interviews or address geo-coding) may lead to reassignment of few cases from one territory to another based on their corrected addresses. These may appear as “decreases” when compared to the previous day’s count. These do not reflect errors in the data collection or analysis process but only reflect the minor day-to-day fluctuations in case counts that arise in an evolving public health database like COVID’s. **Note:** Sharp increases in territorial COVID case counts often reflect new cases diagnosed at long term care facilities located in those territories during facility-wide /mass screening events **All data reported are preliminary and subject to change.**

Fig. 3. Incident & Cumulative Diagnoses Rates for COVID-19 by City (6/17/20)



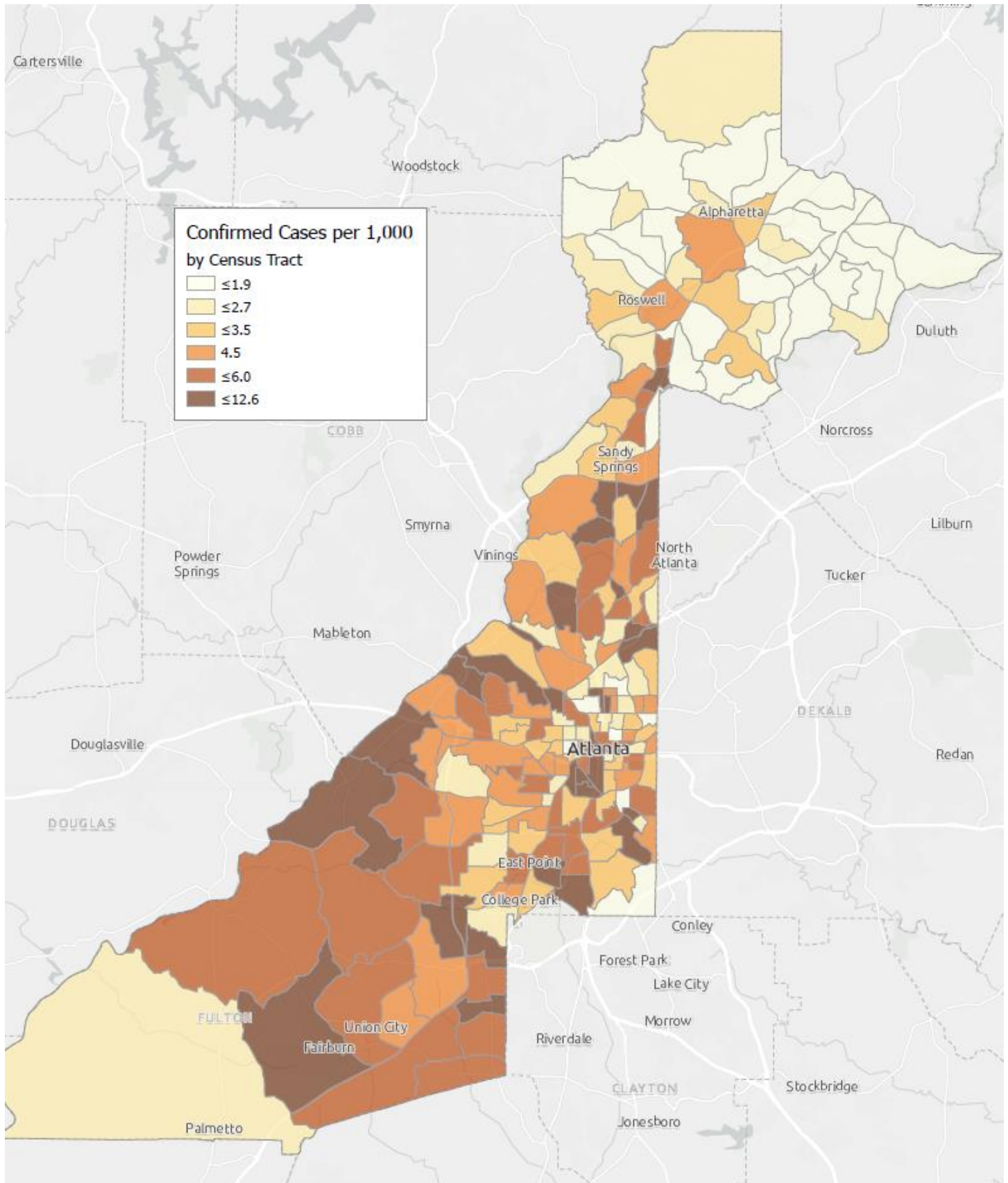
*Rates shown are per 100,000 persons | **Note:** Mass testing in specific locations (e.g. long term care facilities) may cause sharp increases in the cumulative rate of COVID-19 diagnosis in those territories. All data shown are preliminary and are subject to change as testing results get updated.

Fig. 4. Density Map of COVID-19 Cases in Fulton County (6/17/20)



NB. Data used excludes the outbreak-related cases diagnosed at long-term care facilities and reflects the current geographical distribution of COVID19 diagnoses in the general Fulton County community.

Fig. 5. COVID-19 Diagnosis Rates in Fulton County by Census Tract (6/17/2020)



*Rates shown are per 1,000 populations.

NB. Data used excludes the outbreak-related cases diagnosed at long-term care facilities and reflects the current geographical distribution of COVID19 diagnoses in

COVID-19 CASE COUNTS BY ZIP CODE

	Prior (6/15/20)	Current Total (6/17/20)		New Cases (Period: 5/13/20 – 6/10/20) ¹		
	Count	Count	%	1st 14 days	Last 14 d.	% change ²
30331	384	401	7.8%	38	31	↓ 18.4%
30318	317	323	6.3%	61	41	↓ 32.8%
30349	295	300	5.8%	36	41	↑ 13.9%
30213	218	223	4.3%	20	35	↑ 75.0%
30315	162	168	3.3%	21	18	↓ 14.3%
30344	152	155	3.0%	20	14	↓ 30.0%
30311	141	146	2.8%	12	15	↑ 25.0%
30342	247	254	4.9%	48	40	↓ 16.7%
30314	204	207	4.0%	78	10	↓ 87.2%
30310	175	179	3.5%	30	34	↑ 13.3%
30308	86	86	1.7%	<10	<10	-
30022	127	130	2.5%	19	25	↑ 31.6%
30327	114	113	2.2%	25	<10	↓ 68.0%
30004	109	108	2.1%	11	17	↑ 54.5%
30309	151	156	3.0%	11	22	↑ 100.0%
30076	111	114	2.2%	17	20	↑ 17.6%
30291	215	220	4.3%	58	14	↓ 75.9%
30350	132	141	2.7%	22	40	↑ 81.8%
30075	164	170	3.3%	19	30	↑ 57.9%
30328	123	128	2.5%	19	26	↑ 36.8%
30316	50	52	1.0%	<10	<10	-
30312	227	235	4.6%	14	<10	↓ 35.7%
30005	51	51	1.0%	<10	<10	-
30305	158	157	3.0%	28	50	↑ 78.6%
30306	52	55	1.1%	<10	<10	-
30324	162	165	3.2%	29	52	↑ 79.3%
30337	81	88	1.7%	12	<10	↓ 58.3%
30009	56	55	1.1%	<10	<10	-
30313	38	38	0.7%	0	<10	-
30326	31	33	0.6%	<10	<10	-
30097	44	46	0.9%	<10	<10	-
30354	68	74	1.4%	15	20	↑ 33.3%
30303	37	37	0.7%	<10	<10	-
30339	17	18	0.3%	<10	<10	-
30268	21	21	0.4%	0	<10	-
30307	19	20	0.4%	<10	<10	-
30319	31	31	0.6%	<10	<10	-
30336	20	22	0.4%	<10	<10	-
30296	13	13	0.3%	0	<10	-
30363	<10	10	0.2%	<10	<10	-
30301	<10	<10	<0.1%	0	0	↔
30345	10	10	0.2%	<10	<10	-
31131	<10	<10	<0.1%	0	0	↔
30023	<10	<10	<0.1%	<10	0	↓ 100.0%
30080	<10	<10	<0.1%	0	0	↔
30135	<10	<10	<0.1%	0	0	↔
30138	<10	<10	<0.1%	0	0	↔
30139	-	-	-	0	0	↔
30321	<10	<10	<0.1%	<10	<10	-
30340	11	11	0.2%	<10	<10	-
30341	13	13	0.3%	<10	<10	-

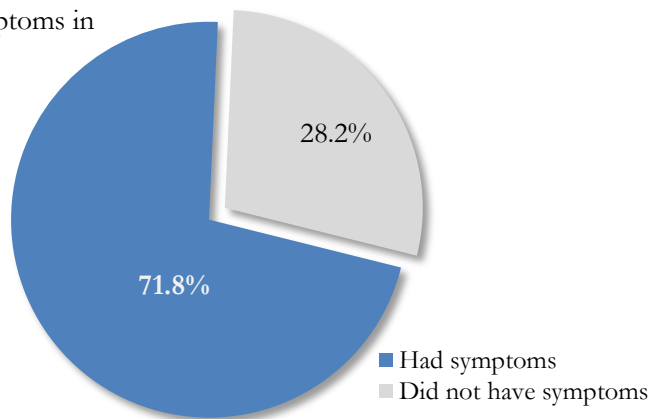
30358	<10	<10	<0.1%	0	0	↔
30374	19	19	0.4%	<10	0	↓ 100.0%
30606	<10	<10	<0.1%	0	0	↔
31150	<10	<10	<0.1%	0	0	↔
30024	<10	<10	<0.1%	0	0	↔
30098	-	-	-	0	0	↔
30334	<10	<10	<0.1%	<10	<10	-
30338	<10	<10	<0.1%	0	<10	-
Unknown	270	139	2.7%	25	29	-

¹**New cases:** Cases diagnosed in most recent 28 days (based on reported dates of positive sample collection). To allow for lag in reporting results of new diagnoses from samples collected in the most recent week, data used for incident diagnoses analyses were moved back by one week. ²**Percent change:** These reflect the percentage increase or decrease of new diagnoses between the 14 days preceding the past 7 days and the 14 days preceding that. Changes in ZIP codes with less than 10 cases in both 2 week intervals are not reported**Data cleaning (either during case interviews or address geo-coding) may lead to reassignment of few cases from one territory to another based on their corrected addresses. These may appear as “decreases” when compared to the previous day’s count. These do not reflect errors in the data collection or analysis process but only reflect the minor day-to-day fluctuations in case counts that arise in an evolving public health database like COVID’s. **Note:** Sharp increases in territorial COVID case counts often reflect new cases diagnosed at long term care facilities located in those territories during facility-wide /mass screening events **All data reported are preliminary and subject to change.**

REPORTING SYMPTOMS AMONG PERSONS DIAGNOSED WITH COVID-19 IN FULTON

People with COVID-19 have reported a wide range of symptoms ranging from mild symptoms to severe illness. Symptoms may appear 2-14 days after exposure to the virus. Symptoms reported include: cough, shortness of breath/difficulty breathing, fever, chills, repeated shaking with chills, muscle pain, headache, sore throat, new loss of taste or smell – Centers for Disease Control and Prevention (CDC) <https://www.cdc.gov/coronavirus/2019-ncov/symptoms-testing/symptoms.html>

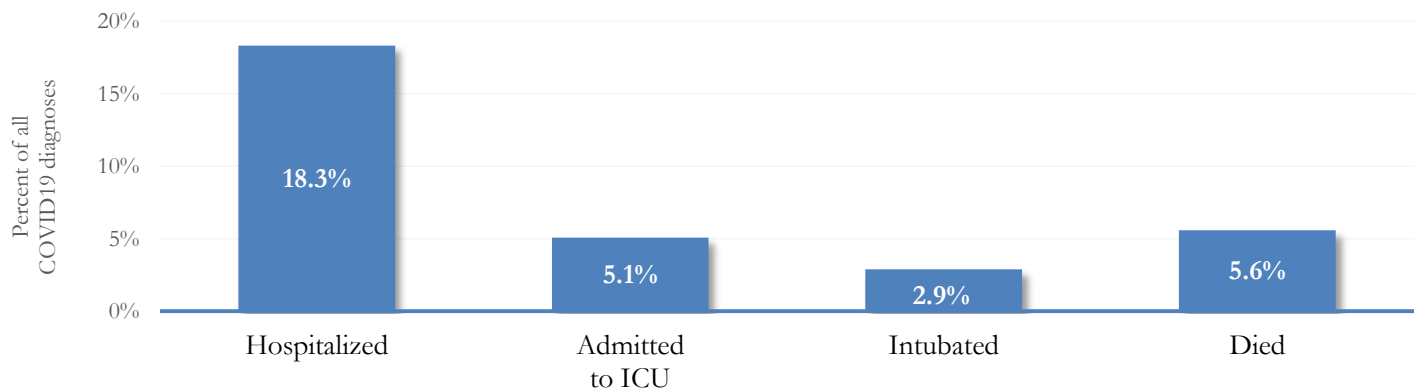
Fig. 6. Proportion reporting Symptoms in Fulton County (6/17/20)



COVID-19 cases who have been case interviewed or had medical charts reviewed as at 6/17/20 only

COVID-19 HOSPITALIZATIONS, ICU ADMISSIONS AND DEATHS IN FULTON

Fig. 7. Hospitalizations, ICU Admissions and Deaths among COVID-19 Diagnoses in Fulton County (6/17/20)



DEMOGRAPHIC DISTRIBUTIONS – COVID 19 DIAGNOSES AND DEATHS IN FULTON

Distribution of COVID-19 diagnoses in Fulton County by Fulton Region – 6/17/20

	North Fulton Cities ¹ Count (%)	Atlanta Count (%)	South Fulton Cities ² Count (%)	Unknown City Count (%)	All Fulton Count (%)
Total COVID-19 cases	1164	2441	1169	512	5286
Gender: Female	550 (47.3%)	1193 (48.9%)	663 (56.7%)	265 (51.8%)	2671 (50.5%)
Male	599 (51.5%)	1214 (49.7%)	490 (41.9%)	240 (46.9%)	2543 (48.1%)
Unknown	15 (1.3%)	34 (1.4%)	16 (1.4%)	<10	72 (1.4%)
Age: <15	26 (2.2%)	27 (1.1%)	15 (1.3%)	13 (2.5%)	81 (1.5%)
15-24	148 (12.7%)	202 (8.3%)	84 (7.2%)	37 (7.2%)	471 (8.9%)
25-34	182 (15.6%)	407 (16.7%)	147 (12.6%)	102 (19.9%)	838 (15.9%)
35-44	211 (18.1%)	358 (14.7%)	182 (15.6%)	81 (15.8%)	832 (15.7%)
45-54	204 (17.5%)	346 (14.2%)	203 (17.4%)	83 (16.2%)	836 (15.8%)
55-64	181 (15.5%)	349 (14.3%)	210 (18.0%)	69 (13.5%)	809 (15.3%)
65-74	104 (8.9%)	350 (14.3%)	156 (13.3%)	38 (7.4%)	648 (12.3%)
≥75	105 (9.0%)	385 (15.8%)	170 (14.5%)	84 (16.4%)	744 (14.1%)
Unknown	<10	17 (0.7%)	<10	<10	27 (0.5%)
Race: Asian, NH	57 (4.9%)	27 (1.1%)	<10	10 (2.0%)	96 (1.8%)
Black, NH	152 (13.1%)	1284 (52.6%)	833 (71.3%)	189 (36.9%)	2458 (46.5%)
White, NH	395 (33.9%)	432 (17.7%)	87 (7.4%)	93 (18.2%)	1007 (19.1%)
Hispanic	220 (18.9%)	149 (6.1%)	58 (5.0%)	52 (10.2%)	479 (9.1%)
Other, NH	34 (2.9%)	45 (1.8%)	15 (1.3%)	18 (3.5%)	112 (2.1%)
Unknown	306 (26.3%)	504 (20.6%)	174 (14.9%)	150 (29.3%)	1134 (21.5%)

¹Includes all Fulton County cities north of Atlanta metro (Alpharetta, Milton, Johns Creek, Roswell, Sandy Springs, Mountain Park) ²Includes all cities south of Atlanta (College Park, Chattahoochee Hills, East Point, Hapeville, Palmetto, South Fulton, Fairburn, Union City). **Note:** All data reported are preliminary and subject to change.

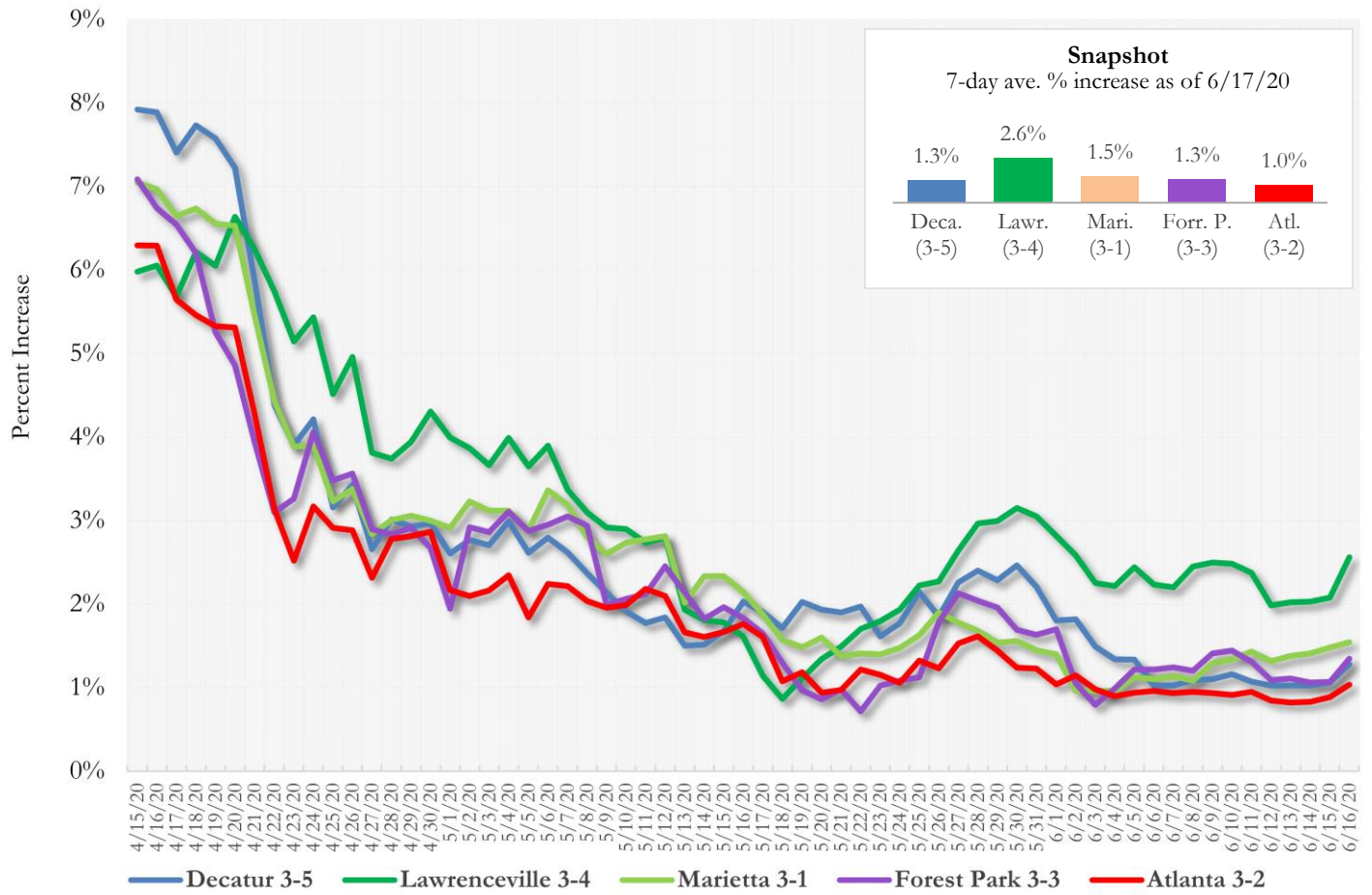
Distribution of COVID-19 Deaths in Fulton County by Fulton Region – 6/17/20

	North Fulton Cities ¹ Count (%)	Atlanta Count (%)	South Fulton Cities ² Count (%)	Unknown City Count (%)	All Fulton Count (%)
Total COVID-19 deaths	37	138	91	29	295
Gender: Female	12 (32.4%)	53 (38.4%)	48 (52.7%)	18 (62.1%)	131 (44.4%)
Male	24 (64.9%)	85 (61.6%)	43 (47.3%)	11 (37.9%)	163 (55.3%)
Unknown	<10	0	0	0	<10
Age: <65	<10	24 (17.4%)	26 (28.6%)	<10	58 (19.7%)
65-74	<10	36 (26.1%)	24 (26.4%)	<10	70 (23.7%)
75-84	10 (27.0%)	38 (27.5%)	18 (19.8%)	<10	74 (25.1%)
≥85	16 (43.2%)	40 (29.0%)	23 (25.3%)	14 (48.3%)	93 (31.5%)
Unknown	0	0	0	0	0
Race: Asian, NH	0	<10	0	0	<10
Black, NH	<10	118 (85.5%)	79 (86.8%)	15 (51.7%)	218 (73.9%)
White, NH	28 (75.7%)	14 (10.1%)	<10	13 (44.8%)	64 (21.7%)
Hispanic	<10	<10	<10	<10	<10
Other, NH	0	<10	0	0	<10
Unknown	0	<10	0	0	<10

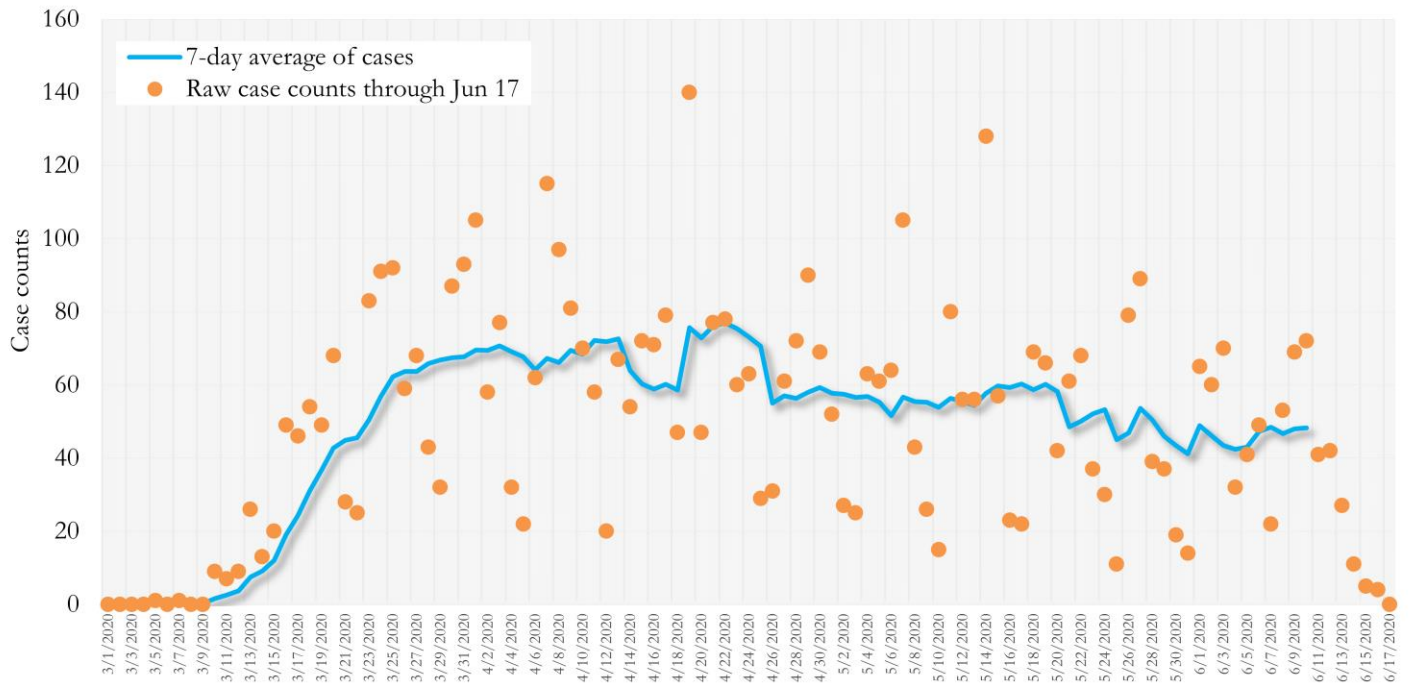
¹Includes all Fulton County cities north of Atlanta metro (Alpharetta, Milton, Johns Creek, Roswell, Sandy Springs, Mountain Park) ²Includes all cities south of Atlanta (College Park, Chattahoochee Hills, East Point, Hapeville, Palmetto, South Fulton, Fairburn, Union City). **Note:** All data reported are preliminary and subject to change.

MORBIDITY AND MORTALITY TRENDS

**Fig. 8. Daily Percent Increase for Atlanta Metro Districts
(Averaged over 7 days)**

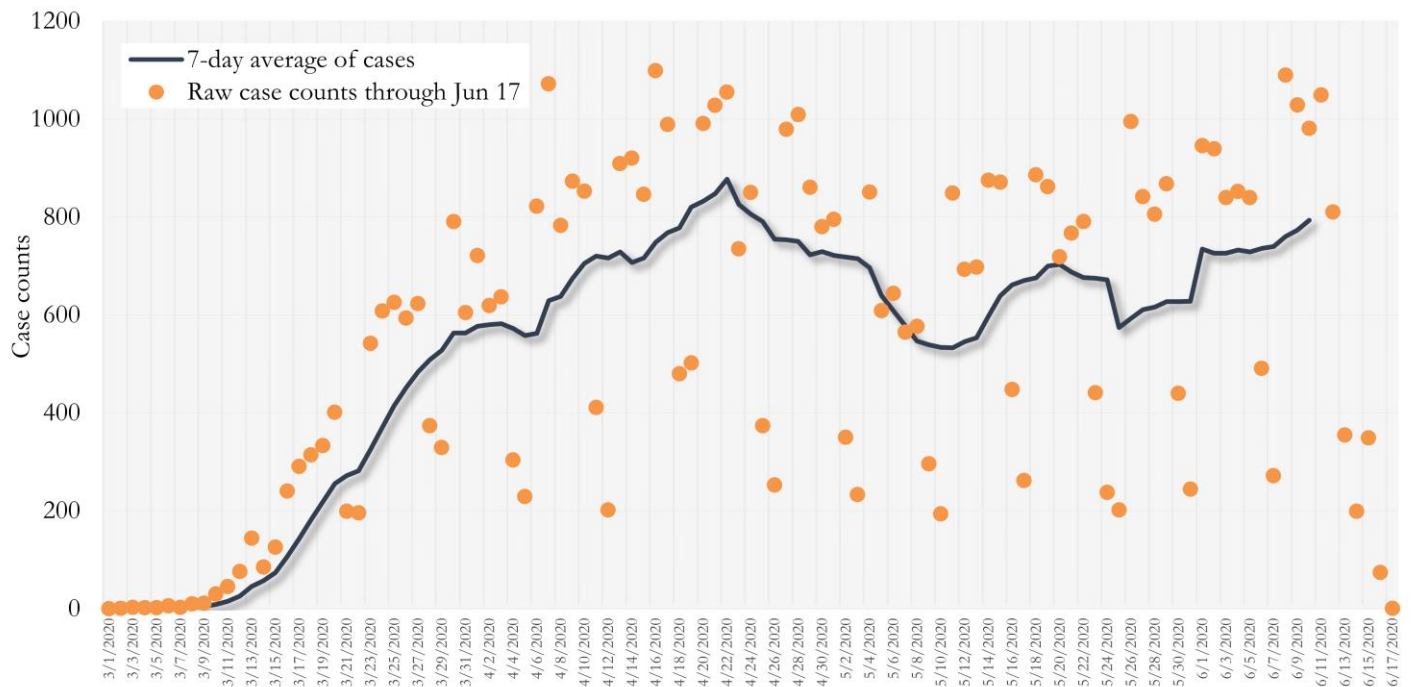


**Fig. 11. New COVID-19 Cases in Fulton County Daily (Averaged over 7 days)
Mar 01, 2020 - Jun 10, 2020**



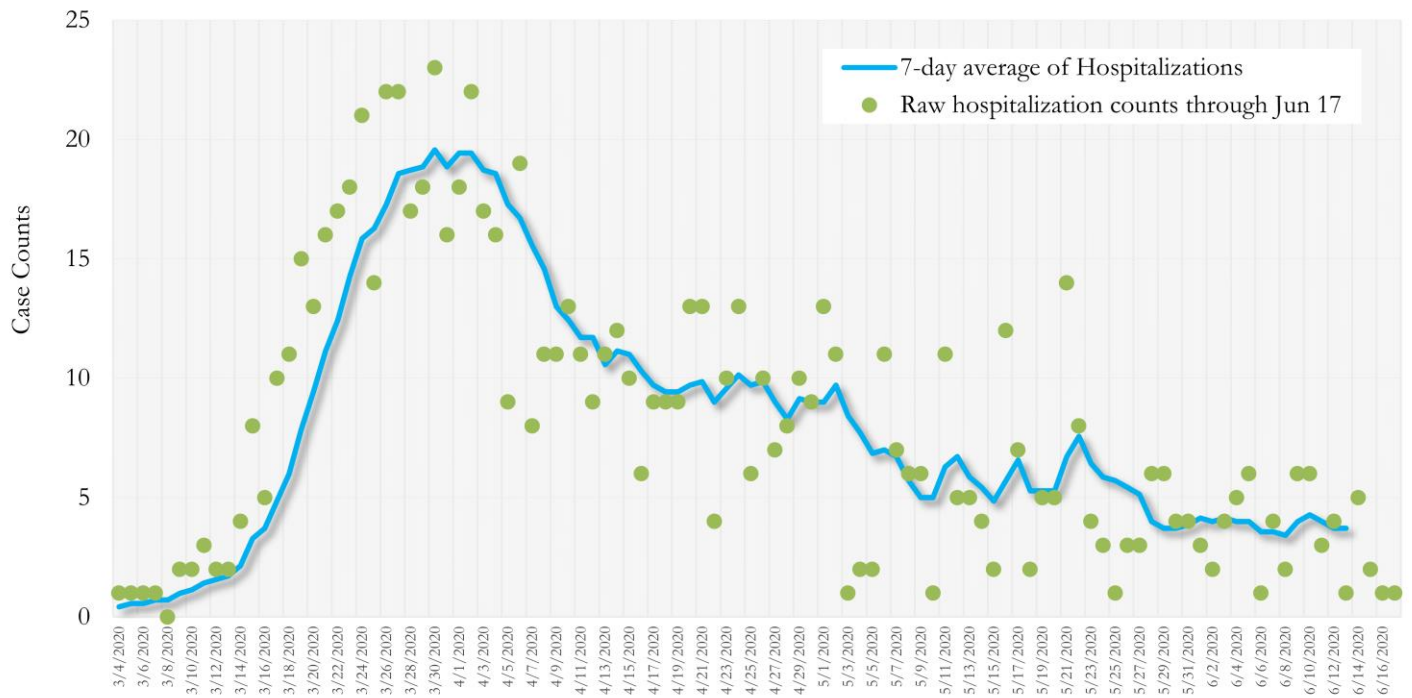
*Date of collection of first positive sample used (report creation date used where sample collection date is missing).

**Fig. 10. New COVID-19 Cases in Georgia State Daily (Averaged over 7 days)
Mar 01, 2020 - Jun 10, 2020**



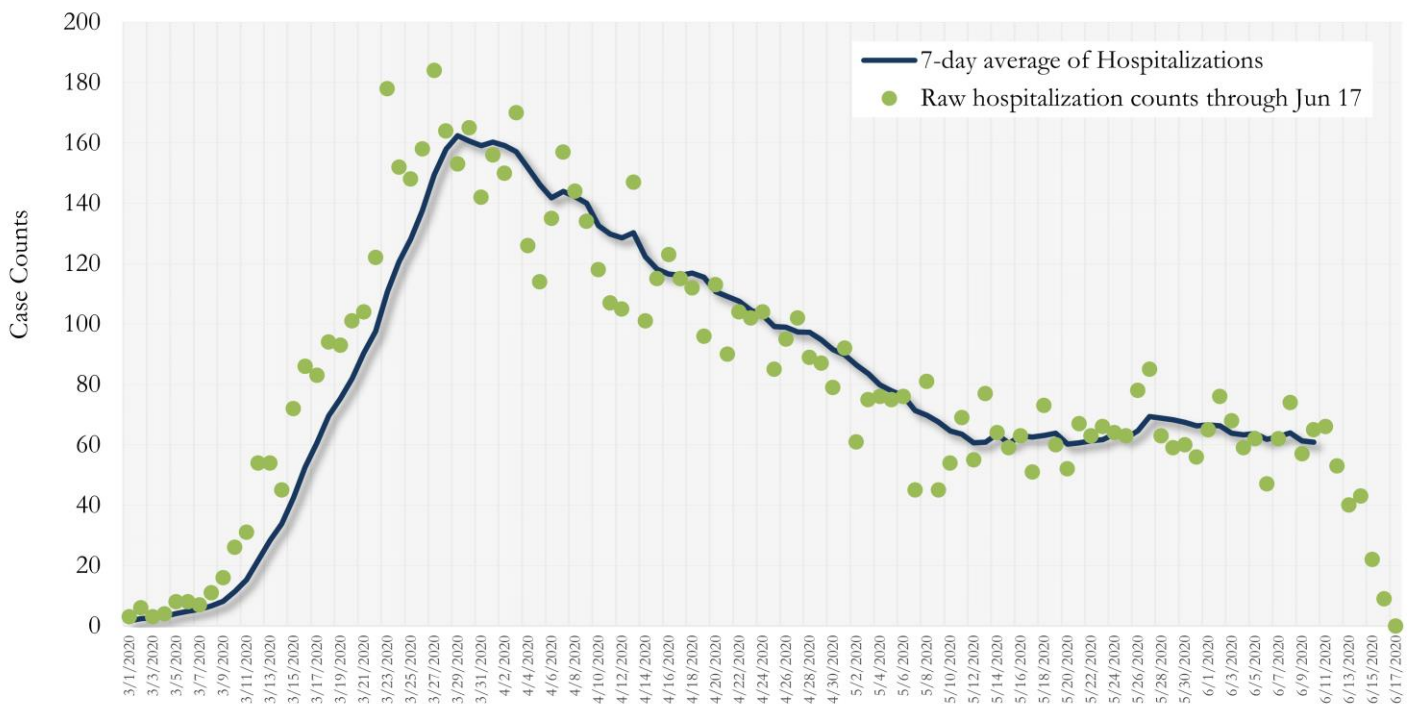
*Date of collection of first positive sample used (report creation date used where sample collection date is missing).

**Fig. 11. COVID-19 Hospitalizations in Fulton County Daily (Averaged over 7 days)
Mar 01, 2020 - Jun 10, 2020**



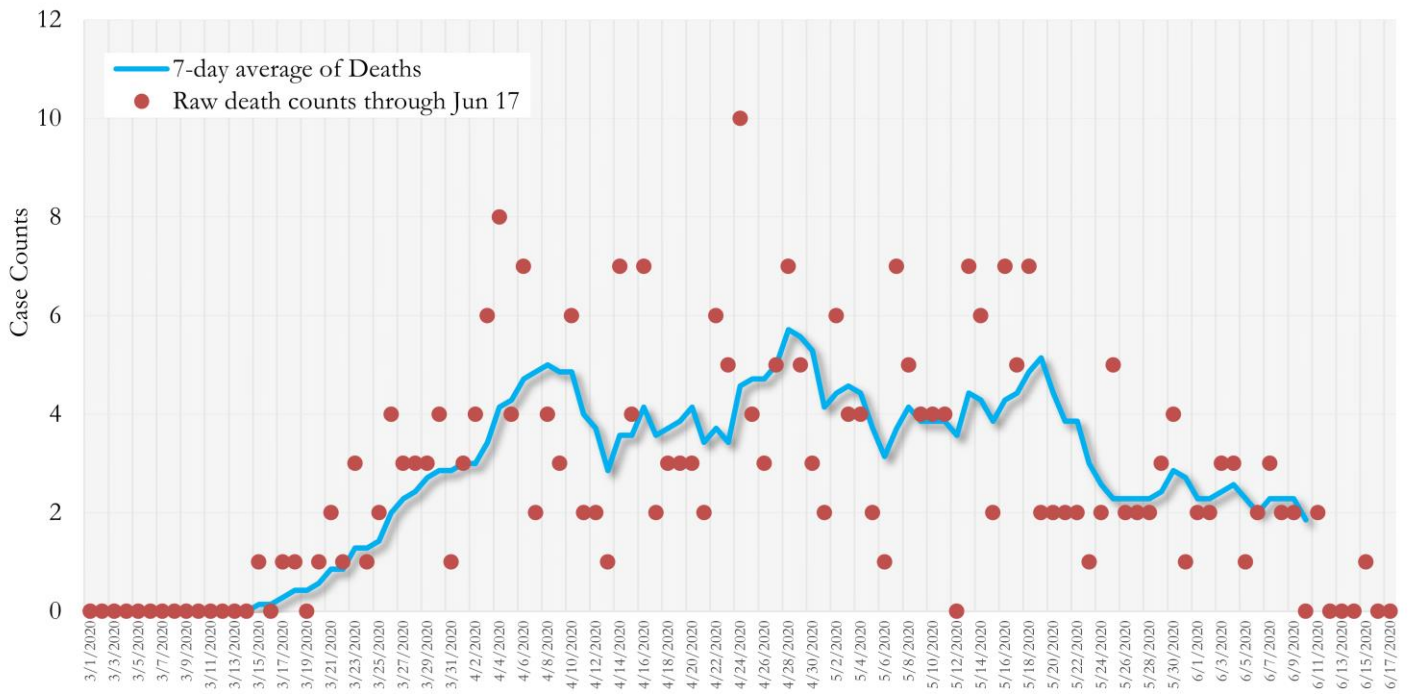
*Date of collection of first positive sample used (report creation date used where sample collection date is missing).

**Fig. 12. COVID-19 Hospitalizations in Georgia State Daily (Averaged over 7 days)
March 01, 2020 - Jun 10, 2020**



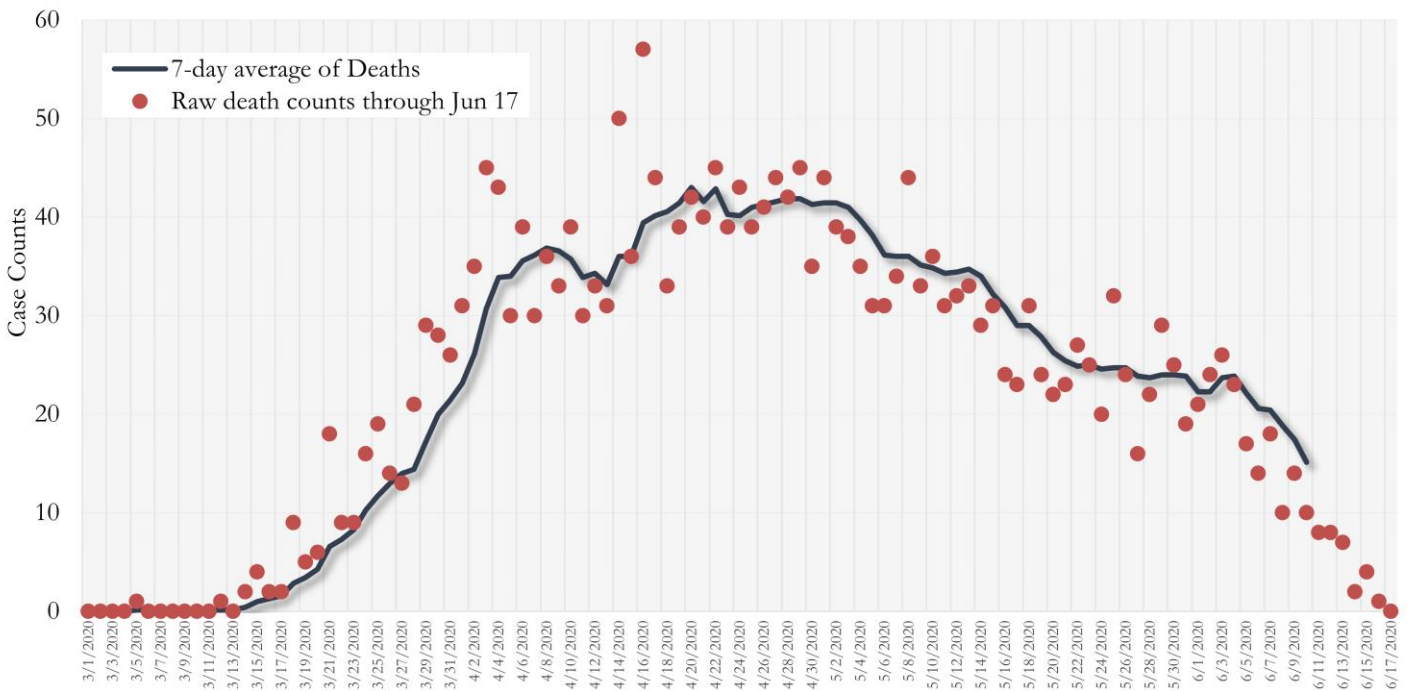
*Date of collection of first positive sample used (report creation date used where sample collection date is missing).

**Fig. 13. COVID-19 Deaths in Fulton County Daily (Averaged over 7 days)
Mar 01, 2020 - Jun 10, 2020**



*Reported date of death used.

**Fig. 14. COVID-19 Deaths in Georgia State Daily (Averaged over 7 days)
Mar 01, 2020 - Jun 10, 2020**

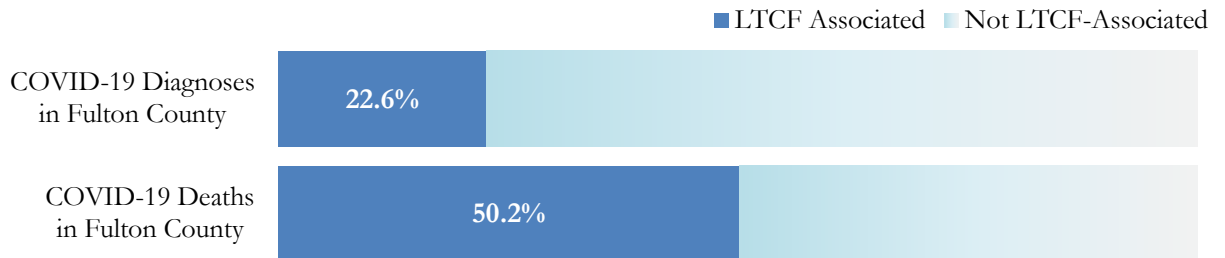


* Reported date of death used.

COVID-19 IN LONG-TERM CARE FACILITIES IN FULTON

Older persons (aged 65 years and older) and persons who live in nursing homes or other long-term care facilities seem to be at higher risk for developing more serious complications from COVID-19. Extra precautions are recommended for individuals within this risk groups – Centers for Disease Control and Prevention (CDC 2020) <https://www.cdc.gov/coronavirus/2019-ncov/need-extra-precautions/people-at-higher-risk.html>

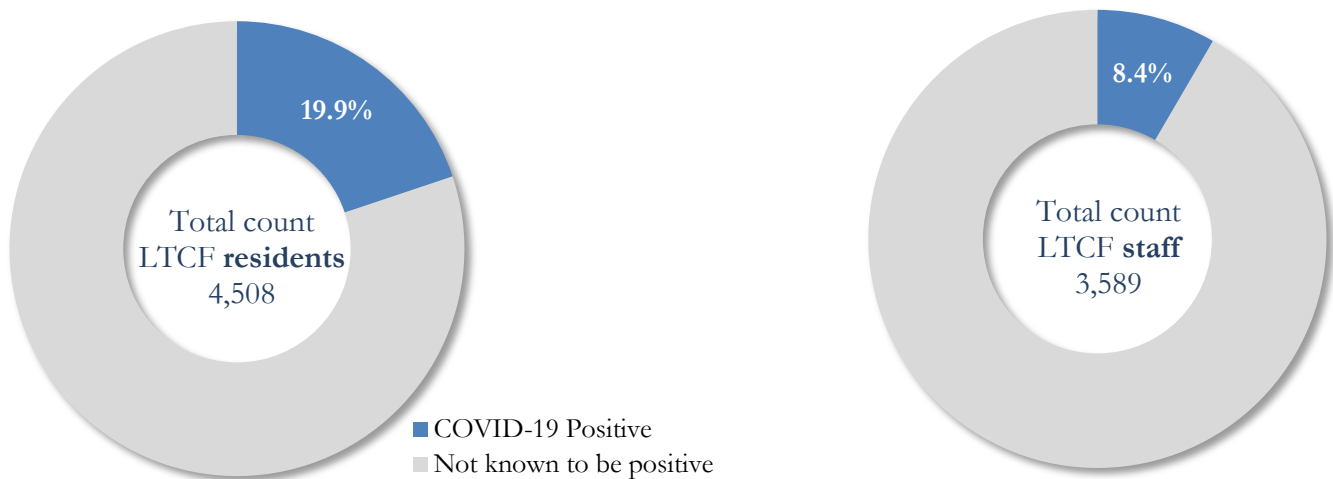
COVID-19 Diagnoses and Deaths in Fulton County Associated with Long-Term Care Facilities (6/17/20)



***LTCF → Long-term Care Facility (Includes residents and Staff) ***

COVID-19 POSITIVITY: COVID-19 testing is currently being provided at various long-term care facilities in Fulton County through the efforts of the Board of Health and the National Guard. See <https://dch.georgia.gov/> for a line listing of COVID-19 cases at all facilities in Georgia.

COVID-19 Positivity at 47 reporting Long-Term Care Facilities (LTCF) in Fulton County (6/17/20)



COVID-19 Cases, Hospitalizations, and Deaths among reporting Long-Term Care Facilities in Fulton County (6/17/20)

	LTCF Residents (n=4,508)			LTCF Staff (n=3,589)		
	Cases	Hospitalizations	Deaths	Cases	Hospitalizations	Deaths
Average (count per fac.) ¹	19	4	3	6	<1	<0.1
Median (count per fac.) ¹	2	2	1	2	0	0
Lowest counts	0	0	0	0	0	0
Highest counts	126	32	23	40	6	1
Total Count	895 (19.9%)^a	188 (21.0%)^b	147 (16.4%)^b	302 (8.4%)^a	16 (5.3%)^b	1 (0.3%)^b

^a Percentage shown reflects proportion of total residents/staff tested who were positive (i.e. COVID-19 Positivity). | ^b Percentages shown are proportions of persons residents/staff diagnosed with COVID-19 who were hospitalized or died after diagnoses.