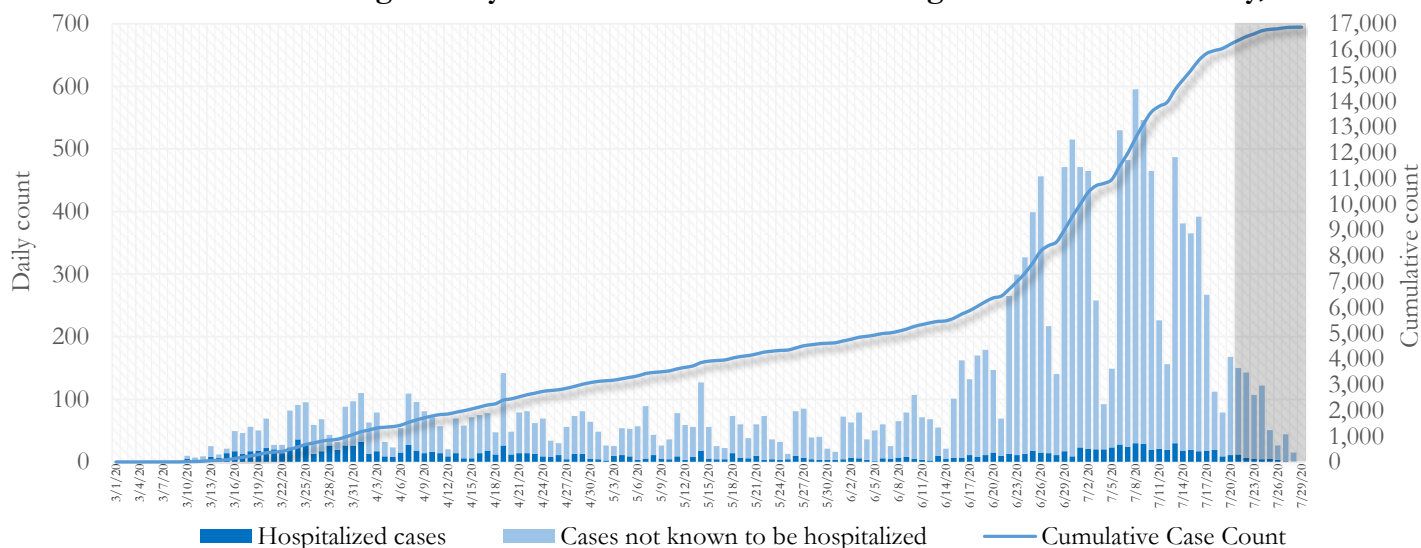


## SUMMARY

- As of July 29, 2020, Fulton County has recorded **16,871** cases of the 2019 novel coronavirus (COVID-19) and **381** deaths.
- Of 4,532 **new diagnoses** made between July 09 and July 22, the central portion of the county (Atlanta metro) accounted for 42% while the northern and southern parts accounted for 23% and 21% respectively.
- By city, **new** COVID-19 diagnoses rates range from 178.2 per 100,000 persons (Johns Creek) to 548.9 per 100,000 persons (Palmetto). [Fulton County Diagnoses Rates (per 100,000 persons): Cumulative – 1,585.7; Incident – 426.0]. See map showing incident case rate by ZIP code on Pg.4.
- Among all persons diagnosed with COVID-19 in Fulton County, 10.0% required hospitalization and 2.3% died.
- Residents and staff of long-term care facilities account for 9.8% of COVID-19 diagnoses and 50.7% of COVID-19 deaths in Fulton County.

**Fig 1. Daily and Cumulative COVID-19 diagnoses in Fulton County, GA**



\*Counts shown reflect the number of confirmed cases as of 9:00am on 7/27/20 using the date of first positive sample collection. Where date of sample collection was not available or missing, the date of report creation in GA SENDSS was used instead. **Note:** All data reported are preliminary and subject to change. Delays in data reporting may cause changes in data counts, particularly in the shaded portion.

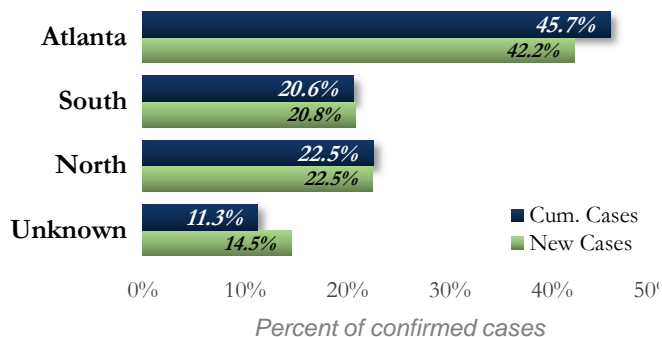
## DISTRIBUTION OF COVID-19 DIAGNOSES BY REGION

**New cases:** 42% of the new COVID-19 cases diagnosed in the past 2 weeks occurred in Atlanta while 23% and 21% occurred in the Northern and Southern regions of the county respectively.

Fulton Region	% Cumulative count	% New cases*
Atlanta	45.7%	42.2%
North <sup>1</sup>	22.5%	22.5%
South <sup>2</sup>	20.6%	20.8%
Unincorporated/Unknown	11.3%	14.5%

<sup>1</sup>Includes all Fulton County cities north of Atlanta metro (Alpharetta, Milton, Johns Creek, Roswell, Sandy Springs, Mountain Park) | <sup>2</sup>Includes all cities south of Atlanta (College Park, Chattahoochee Hills, East Point, Hapeville, Palmetto, South Fulton, Fairburn, and Union City) \***New cases:** Cases diagnosed in the past 2 weeks only (between 7/09/20 – 7/22/20).

**Fig. 2. Distribution of COVID 19 cases by Region**

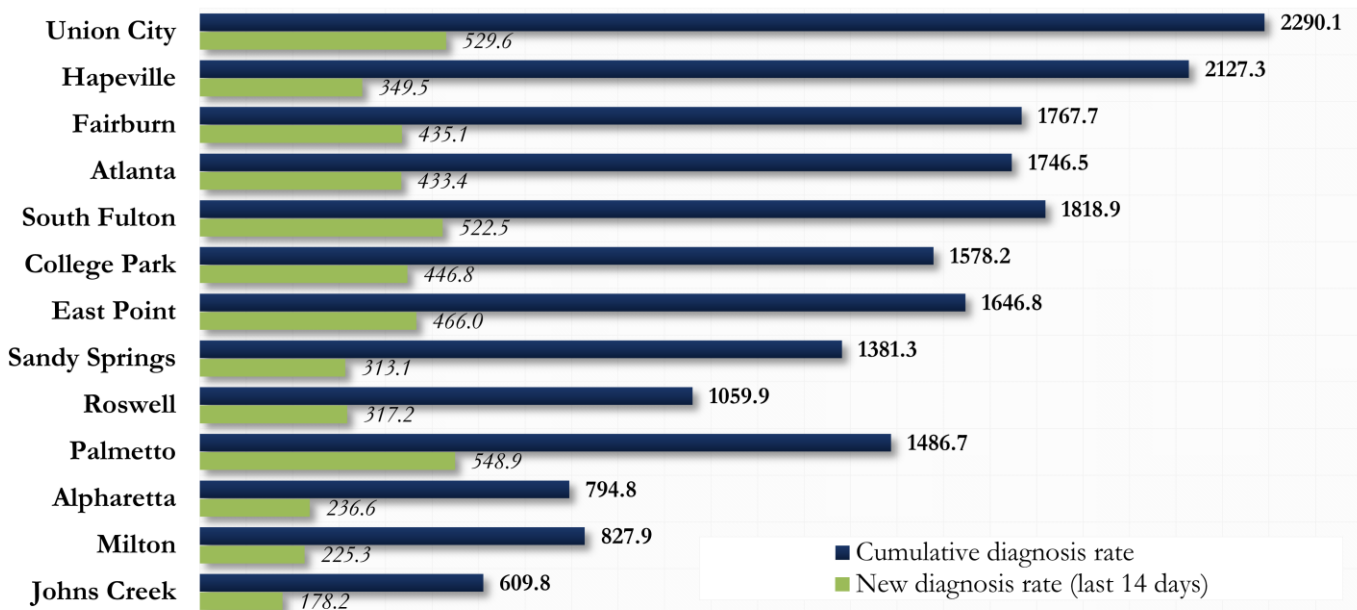


## COVID-19 CASE COUNTS AND RATES BY CITY

	Prior (7/27/20)	Current Total (7/29/20)			New Cases (Period: 6/24/20 – 7/22/20) <sup>1</sup>			
	Count	Count	%	Cum. Rate <sup>2</sup>	Ist 14 d. (6/24–7/08)	Last 14 d. (7/09–7/22)	% change <sup>3</sup>	Rate <sup>4</sup> (Last 14 d.)
Atlanta	7431	7705	45.7%	1746.5	2436	1912	↓ 21.5%	433.4
South Fulton	1658	1730	10.3%	1818.9	511	497	↓ 2.7%	522.5
Sandy Springs	1372	1456	8.6%	1381.3	399	330	↓ 17.3%	313.1
Roswell	915	999	5.9%	1059.9	248	299	↑ 20.6%	317.2
East Point	550	576	3.4%	1646.8	179	163	↓ 8.9%	466.0
Johns Creek	466	510	3.0%	609.8	144	149	↑ 3.5%	178.2
Union City	460	480	2.8%	2290.1	108	111	↑ 2.8%	529.6
Alpharetta	475	514	3.0%	794.8	151	153	↑ 1.3%	236.6
Milton	296	316	1.9%	827.9	113	86	↓ 23.9%	225.3
Fairburn	252	260	1.5%	1767.7	69	64	↓ 7.2%	435.1
College Park	208	219	1.3%	1578.2	50	62	↑ 24.0%	446.8
Palmetto	60	65	0.4%	1486.7	19	24	↑ 26.3%	548.9
Hapeville	137	140	0.8%	2127.3	28	23	↓ 17.9%	349.5
Mountain Park	1	2	0.0%	320.0	0	<10	-	320.0
Unknown	2590	1899	11.3%	-	515	655	-	-

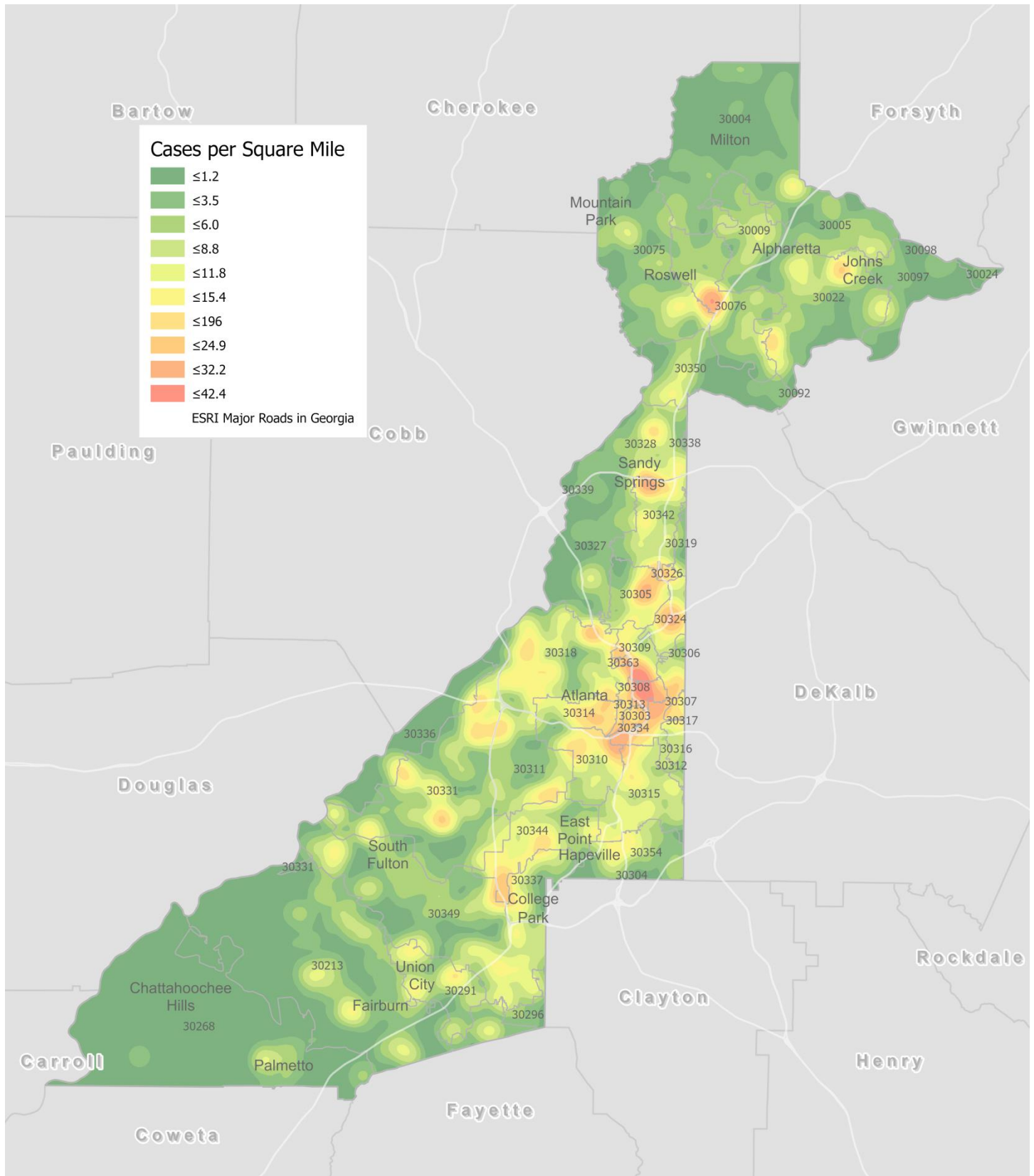
<sup>1</sup>**New cases:** Cases diagnosed in most recent 28 days (based on reported dates of positive sample collection). To allow for lag in reporting results of new diagnoses from samples collected in the most recent week, data used for incident diagnoses analyses were moved back by one week. <sup>2</sup>**Cumulative diagnosis rate:** Population estimates from US Census Bureau used to calculate cumulative diagnoses rate. All rates shown are per 100,000 persons. <sup>3</sup>**% change:** These reflect the percentage increase or decrease in new diagnoses between the 14 days preceding the most recent 7 days and the 14 days preceding that. Changes in cities with less than 10 cases in both 2 week intervals are not reported. <sup>4</sup>**(Incidence) Rate:** Rate of new diagnoses in the last 14 day period preceding the immediate past week. \*\*Data cleaning (either during case interviews or address geo-coding) may lead to reassignment of few cases from one territory to another based on their corrected addresses. These may appear as “decreases” when compared to the previous day’s count. These do not reflect errors in the data collection or analysis process but only reflect the minor day-to-day fluctuations in case counts that arise in an evolving public health database like COVID’s. **Note: All data reported are preliminary and subject to change.**

**Fig. 3. Incident & Cumulative Diagnoses Rates for COVID-19 by City**



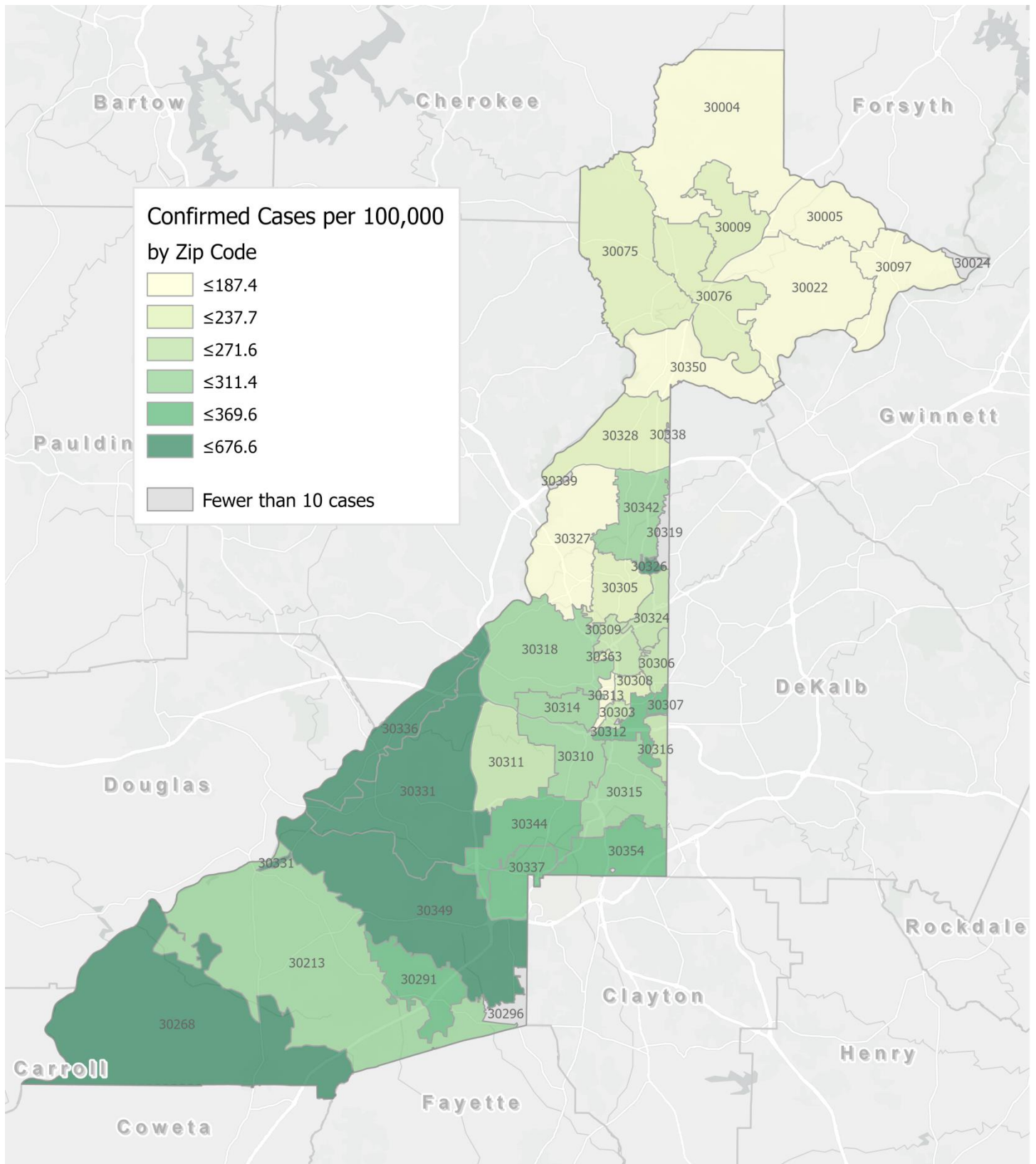
\*Rates shown are per 100,000 persons | **Note:** Mass testing in specific locations (e.g. long term care facilities) may cause sharp increases in the cumulative rate of COVID-19 diagnosis in those territories. All data shown are preliminary and are subject to change as testing results get updated.

Fig. 4. Density Map – New COVID 19 Diagnoses (Jul 09 – Jul 22, 2020) in Fulton County



**New COVID-19 cases:** Cases diagnosed in most recent 14 days (based on reported dates of positive sample collection). To allow for lag in reporting results of positive cases from samples collected in the immediate past 7 days, data used for incident diagnoses analyses are moved back by one week. Map reflects new COVID-19 cases diagnosed between July 9<sup>th</sup> and Jul 22<sup>nd</sup>, 2020 across Fulton County.

Fig. 5. New COVID-19 Diagnoses Rates (per 100,000 population) by ZIP Code (Jul 09 – Jul 22, 2020)



\*Rates shown are per 100,000 populations.

**New COVID-19 cases:** Cases diagnosed in most recent 14 days (based on reported dates of positive sample collection). To allow for lag in reporting results of positive cases from samples collected in the immediate past 7 days, data used for incident diagnoses analyses are moved back by one week. Data used excludes outbreak-related cases at long-term care facilities and map shown reflects only the new non-LTCF cases diagnosed between the dates shown in map title.

## COVID-19 CASE COUNTS BY ZIP CODE

	Prior (7/27/20)	Current Total (7/29/20)		New Cases (Period: 6/24/20 – 7/22/20) <sup>1</sup>		
	Count	Count	%	1st 14 days (Jun 24 – Jul 08)	Last 14 d. (Jul 09 – Jul 22)	% change <sup>2</sup>
<b>All Fulton</b>	16871	16871	100.0%	4972	4532	↓ 8.8%
30331	1090	1145	6.8%	323	298	↓ 7.7%
30318	986	1037	6.1%	321	286	↓ 10.9%
30349	1048	1100	6.5%	348	347	↓ 0.3%
30213	611	636	3.8%	166	173	↑ 4.2%
30315	474	497	2.9%	146	126	↓ 13.7%
30344	497	524	3.1%	155	149	↓ 3.9%
30311	475	495	2.9%	155	119	↓ 23.2%
30342	701	731	4.3%	191	182	↓ 4.7%
30314	392	403	2.4%	85	78	↓ 8.2%
30310	478	494	2.9%	152	110	↓ 27.6%
30308	304	319	1.9%	108	88	↓ 18.5%
30022	521	563	3.3%	185	169	↓ 8.6%
30327	302	314	1.9%	117	53	↓ 54.7%
30004	450	474	2.8%	166	138	↓ 16.9%
30309	492	520	3.1%	201	106	↓ 47.3%
30076	414	455	2.7%	120	150	↑ 25.0%
30291	488	509	3.0%	116	103	↓ 11.2%
30350	308	335	2.0%	67	73	↑ 9.0%
30075	471	519	3.1%	124	147	↑ 18.5%
30328	431	464	2.8%	159	114	↓ 28.3%
30316	242	260	1.5%	91	85	↓ 6.6%
30312	553	574	3.4%	165	119	↓ 27.9%
30005	231	252	1.5%	77	64	↓ 16.9%
30305	476	499	3.0%	165	97	↓ 41.2%
30306	193	204	1.2%	72	61	↓ 15.3%
30324	585	604	3.6%	239	110	↓ 54.0%
30337	194	204	1.2%	43	54	↑ 25.6%
30009	181	195	1.2%	50	64	↑ 28.0%
30313	105	108	0.6%	34	20	↓ 41.2%
30326	141	142	0.8%	57	26	↓ 54.4%
30097	106	122	0.7%	17	45	↑ 164.7%
30354	268	279	1.7%	78	64	↓ 17.9%
30303	365	327	1.9%	29	239	↑ 724.1%
30339	171	173	1.0%	96	55	↓ 42.7%
30268	97	103	0.6%	28	45	↑ 60.7%
30307	102	107	0.6%	34	40	↑ 17.6%
30319	84	87	0.5%	23	11	↓ 52.2%
30336	63	63	0.4%	18	12	↓ 33.3%
30296	27	30	0.2%	<10	12	↑ 500.0%
30363	47	47	0.3%	22	14	↓ 36.4%
30301	<10	<10	<0.1%	<10	<10	-
30345	29	30	0.2%	11	<10	↓ 54.5%
31131	<10	<10	<0.1%	<10	0	↓ 100.0%
30023	<10	<10	<0.1%	<10	<10	-
30080	<10	<10	<0.1%	0	<10	-
30135	<10	<10	<0.1%	0	<10	-
30138	<10	<10	<0.1%	0	0	-
30139	-	-	-	0	0	-
30321	<10	<10	<0.1%	<10	<10	-

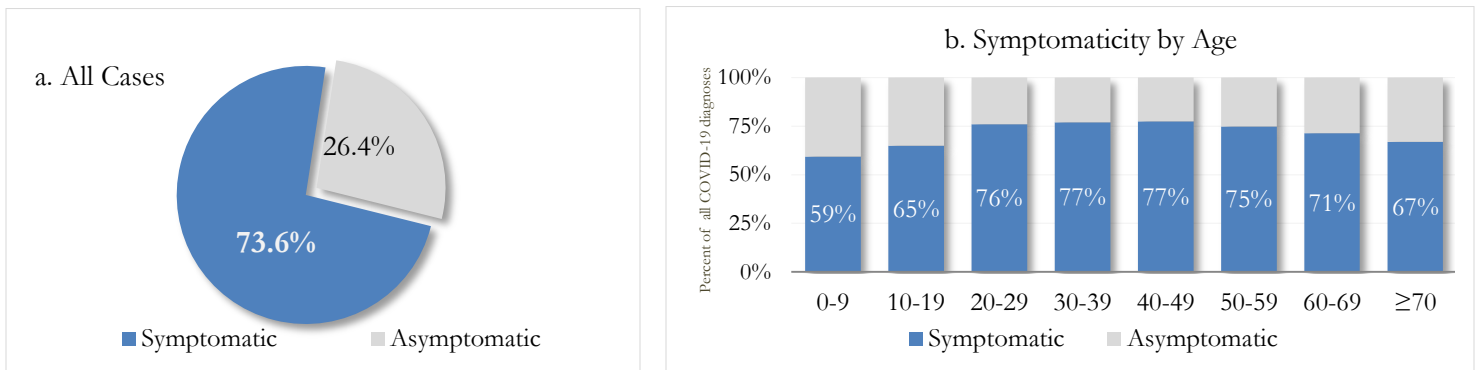
30340	26	28	0.2%	<10	<10	-
30341	27	28	0.2%	<10	<10	-
30358	<10	<10	<0.1%	0	0	-
30374	26	27	0.2%	<10	<10	-
30606	<10	<10	<0.1%	0	0	-
31150	<10	<10	<0.1%	0	0	-
30024	<10	10	<0.1%	<10	<10	-
30098	-	-	-	0	0	-
30334	12	12	<0.1%	<10	<10	-
30338	88	92	0.5%	41	41	-
Unknown	1450	688	4.1%	155	207	-

<sup>1</sup>**New cases:** Cases diagnosed in most recent 28 days (based on reported dates of positive sample collection). To allow for lag in reporting results of new diagnoses from samples collected in the most recent week, data used for incident diagnoses analyses were moved back by one week. <sup>2</sup>**Percent change:** These reflect the percentage increase or decrease of new diagnoses between the 14 days preceding the past 7 days and the 14 days preceding that. Changes in ZIP codes with less than 10 cases in both 2 week intervals are not reported\*\*Data cleaning (either during case interviews or address geo-coding) may lead to reassignment of few cases from one territory to another based on their corrected addresses. These may appear as “decreases” when compared to the previous day’s count. These do not reflect errors in the data collection or analysis process but only reflect the minor day-to-day fluctuations in case counts that arise in an evolving public health database like COVID’s. **Note:** Sharp increases in territorial COVID case counts often reflect new cases diagnosed at long term care facilities located in those territories during facility-wide /mass screening events **All data reported are preliminary and subject to change.**

## REPORTING SYMPTOMS AMONG PERSONS DIAGNOSED WITH COVID-19 IN FULTON

People with COVID-19 have reported a wide range of symptoms ranging from mild symptoms to severe illness. Symptoms may appear 2-14 days after exposure to the virus. Symptoms reported include: cough, shortness of breath/difficulty breathing, fever, chills, repeated shaking with chills, muscle pain, headache, sore throat, new loss of taste or smell – Centers for Disease Control and Prevention (CDC)  
<https://www.cdc.gov/coronavirus/2019-ncov/symptoms-testing/symptoms.html>

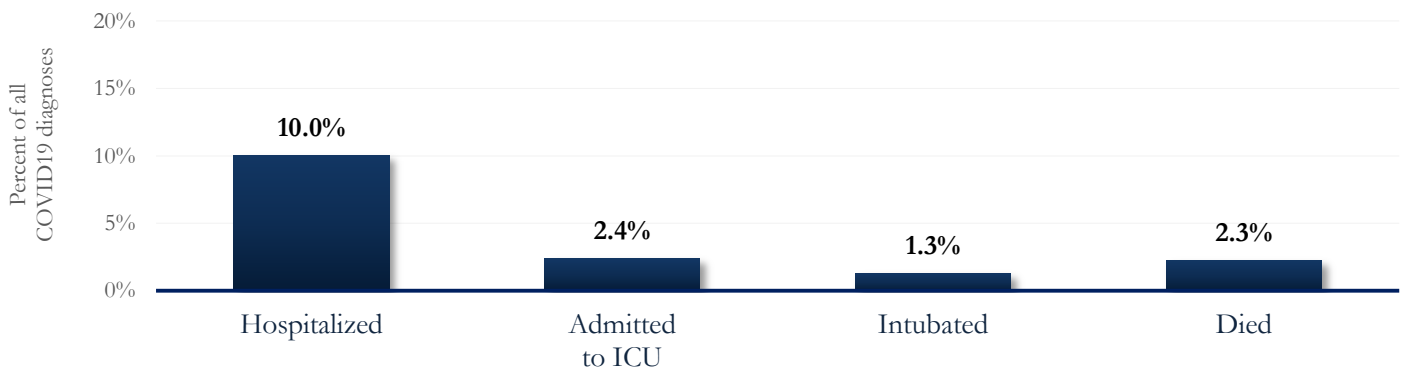
Fig. 6a & b. Proportion Reporting Symptoms in Fulton



\*\*\*COVID-19 cases who have been case interviewed or had medical charts reviewed as at 7/29/20 only\*\*\*

## COVID-19 HOSPITALIZATIONS, ICU ADMISSIONS AND DEATHS IN FULTON

Fig. 7. Hospitalizations, ICU Admissions and Deaths among COVID-19 Diagnoses in Fulton County



## DEMOGRAPHIC DISTRIBUTIONS – COVID 19 DIAGNOSES AND DEATHS

### A. Distribution of COVID-19 diagnoses in Fulton County by Fulton Region

	North Fulton Cities <sup>1</sup> Count (%)	Atlanta Count (%)	South Fulton Cities <sup>2</sup> Count (%)	Unknown City Count (%)	All Fulton Count (%)
<b>Total COVID-19 cases</b>	3797	7705	3470	1899	16871
<b>Gender:</b> Female	1838 (48.4%)	3595 (46.7%)	1865 (53.7%)	927 (48.8%)	8225 (48.8%)
Male	1779 (46.9%)	3464 (45.0%)	1371 (39.5%)	850 (44.8%)	7464 (44.2%)
Unknown	180 (4.7%)	646 (8.4%)	234 (6.7%)	122 (6.4%)	1182 (7.0%)
<b>Age:</b> 0-9	103 (2.7%)	120 (1.6%)	78 (2.2%)	50 (2.6%)	351 (2.1%)
10-19	448 (11.8%)	445 (5.8%)	189 (5.4%)	118 (6.2%)	1200 (7.1%)
20-29	873 (23.0%)	2209 (28.7%)	680 (19.6%)	513 (27.0%)	4275 (25.3%)
30-39	632 (16.6%)	1668 (21.6%)	685 (19.7%)	404 (21.3%)	3389 (20.1%)
40-49	600 (15.8%)	1014 (13.2%)	616 (17.8%)	284 (15.0%)	2514 (14.9%)
50-59	526 (13.9%)	869 (11.3%)	508 (14.6%)	227 (12.0%)	2130 (12.6%)
60-69	306 (8.1%)	589 (7.6%)	364 (10.5%)	133 (7.0%)	1392 (8.3%)
≥70	304 (8.0%)	772 (10.0%)	339 (9.8%)	164 (8.6%)	1579 (9.4%)
Unknown	<10	19 (0.2%)	11 (0.3%)	<10	41 (0.2%)
<b>Race:</b> Asian, NH	89 (2.3%)	96 (1.2%)	12 (0.3%)	29 (1.5%)	226 (1.3%)
Black, NH	392 (10.3%)	3213 (41.7%)	1990 (57.3%)	518 (27.3%)	6113 (36.2%)
White, NH	1060 (27.9%)	1241 (16.1%)	132 (3.8%)	335 (17.6%)	2768 (16.4%)
Hispanic	644 (17.0%)	421 (5.5%)	194 (5.6%)	216 (11.4%)	1475 (8.7%)
Other, NH	142 (3.7%)	194 (2.5%)	58 (1.7%)	71 (3.7%)	465 (2.8%)
Unknown	1470 (38.7%)	2540 (33.0%)	1084 (31.2%)	730 (38.4%)	5824 (34.5%)

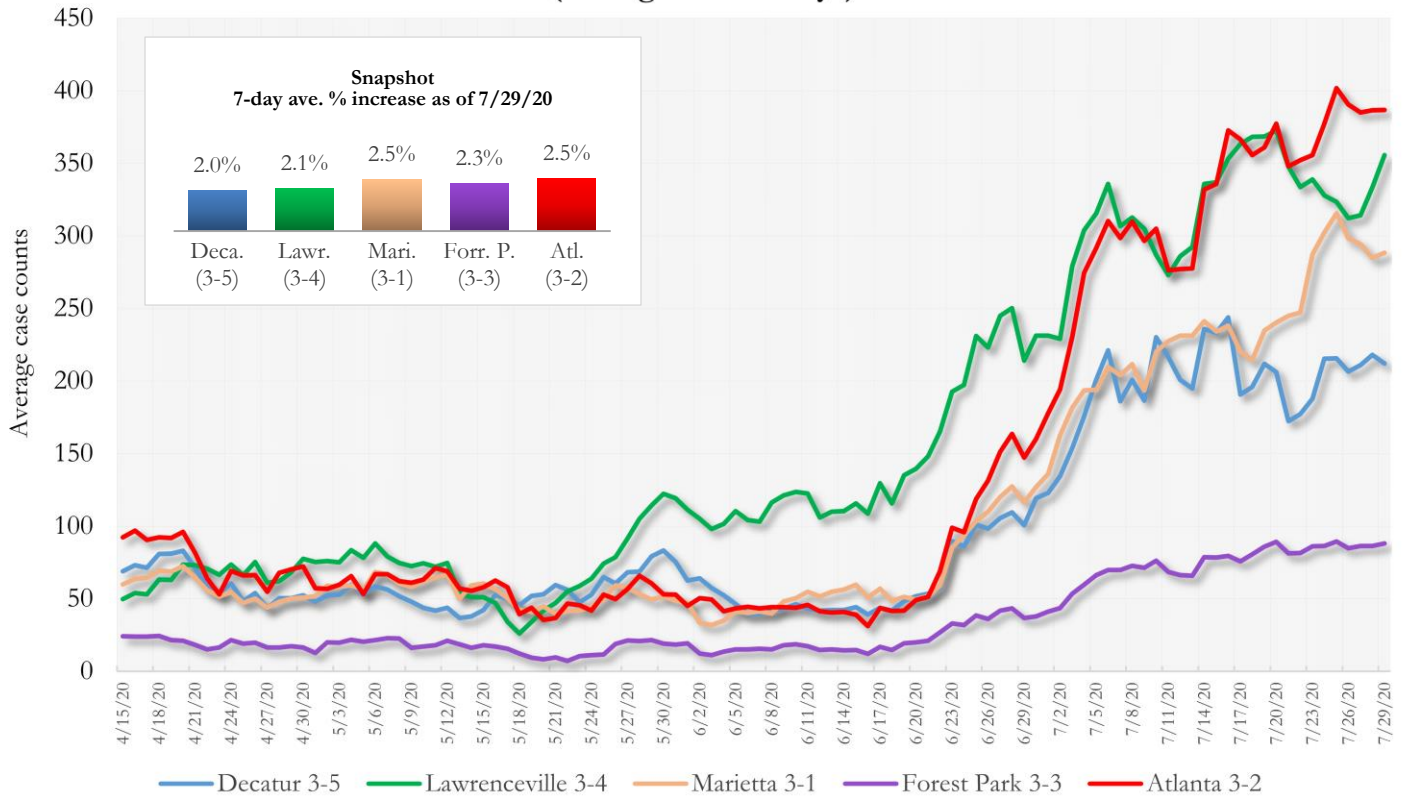
### B. Distribution of COVID-19 deaths in Fulton County by Fulton Region

	North Fulton Cities <sup>1</sup> Count (%)	Atlanta Count (%)	South Fulton Cities <sup>2</sup> Count (%)	Unknown City Count (%)	All Fulton Count (%)
<b>Total COVID-19 deaths</b>	63	183	101	34	381
<b>Gender:</b> Female	25 (39.7%)	78 (42.6%)	54 (53.5%)	20 (58.8%)	177 (46.5%)
Male	38 (60.3%)	105 (57.4%)	47 (46.5%)	14 (41.2%)	204 (53.5%)
Unknown	0	0	0	0	0
<b>Age:</b> ≤ 29	0	<10	<10	0	<10
30-39	<10	<10	<10	0	<10
40-49	<10	<10	<10	0	11 (2.9%)
50-59	<10	12 (6.6%)	11 (10.9%)	<10	27 (7.1%)
60-69	<10	35 (19.1%)	26 (25.7%)	<10	70 (18.4%)
≥70	50 (79.4%)	127 (69.4%)	58 (57.4%)	29 (85.3%)	264 (69.3%)
Unknown	0	0	0	0	0
<b>Race:</b> Asian, NH	0	<10	0	<10	<10
Black, NH	12 (19.0%)	152 (83.1%)	88 (87.1%)	17 (50.0%)	269 (70.6%)
White, NH	46 (73.0%)	21 (11.5%)	<10	14 (41.2%)	90 (23.6%)
Hispanic	<10	<10	<10	<10	13 (3.4%)
Other, NH	0	<10	<10	0	<10
Unknown	<10	<10	0	0	<10

<sup>1</sup>Includes all Fulton County cities north of Atlanta metro (Alpharetta, Milton, Johns Creek, Roswell, Sandy Springs, Mountain Park ) <sup>2</sup>Includes all cities south of Atlanta (College Park, Chattahoochee Hills, East Point, Hapeville, Palmetto, South Fulton, Fairburn, Union City). **Note:** All data reported are preliminary and subject to change.

**COVID-19 CASE TRENDS IN FULTON AND SURROUNDING DISTRICTS**

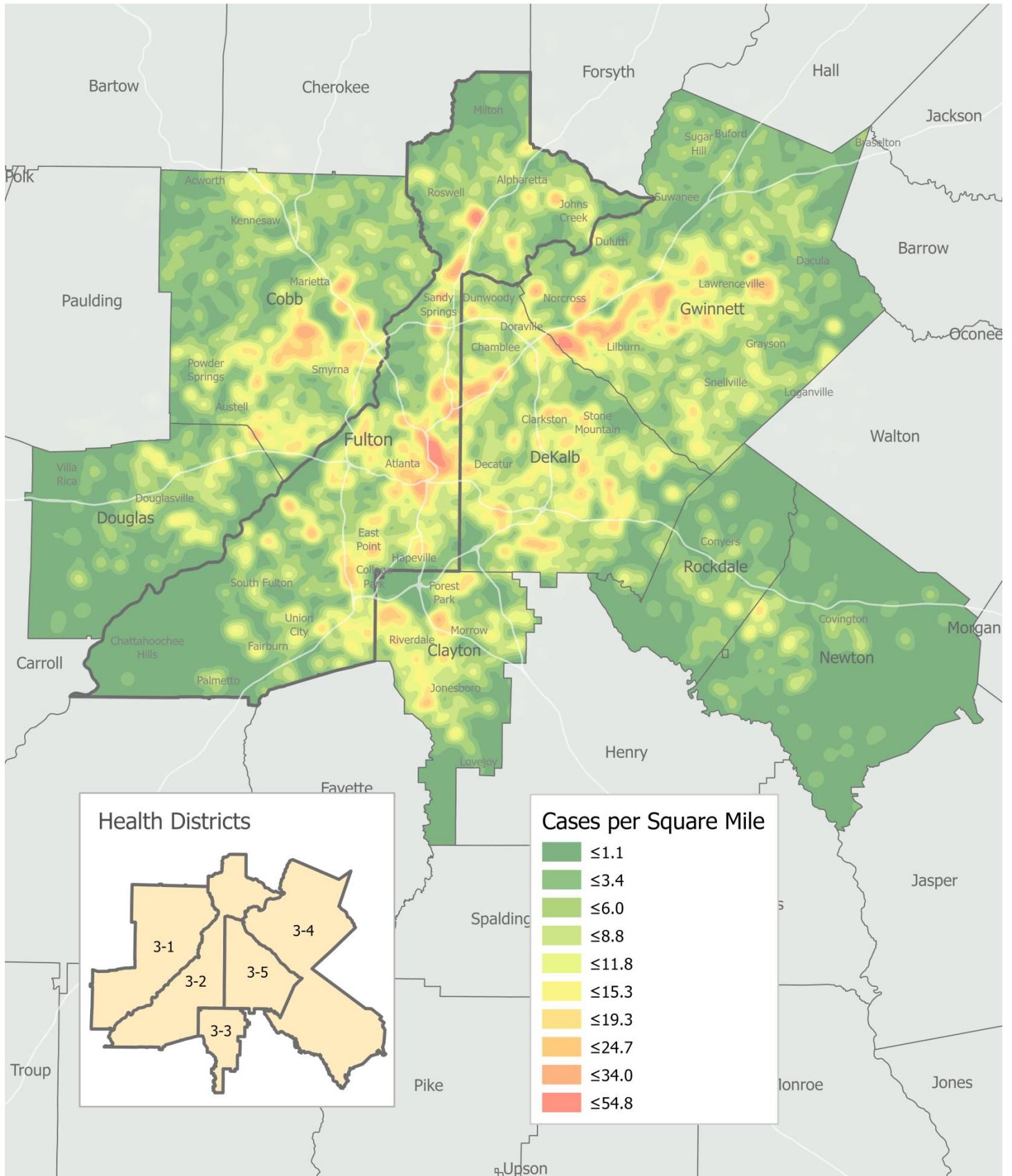
**Fig. 8. Daily Case Counts for Atlanta Metro Districts  
(Averaged over 7 days)**



\*Graph shows the average number of cases calculated from the daily cumulative case counts in the metro Atlanta districts. Increases in daily cumulative case counts may include cases diagnosed earlier during the pandemic but were only recently reported to the state as cases diagnosed belonging to these districts.

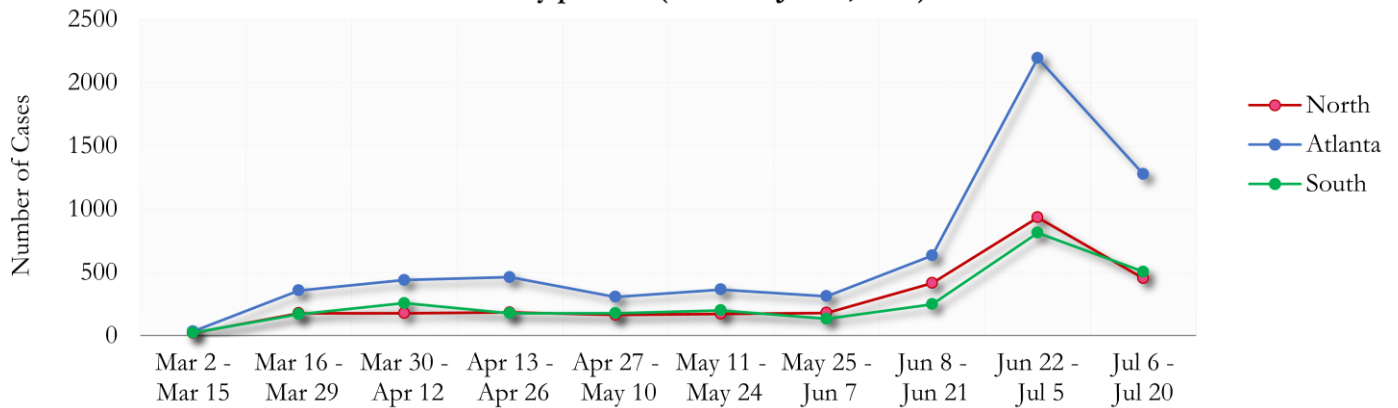


Fig. 9. COVID-19 Cases in Fulton County and Surrounding Districts (Jul 09 – Jul 22, 2020)



**TRENDS IN COVID-19 CASES AMONG DEMOGRAPHIC GROUPS (14 DAY PERIODS)**

**Fig. 10. Trends in Geographic distribution of COVID -19 Diagnoses in Fulton County by 14-day periods (Mar 02 - Jul 20, 2020)**

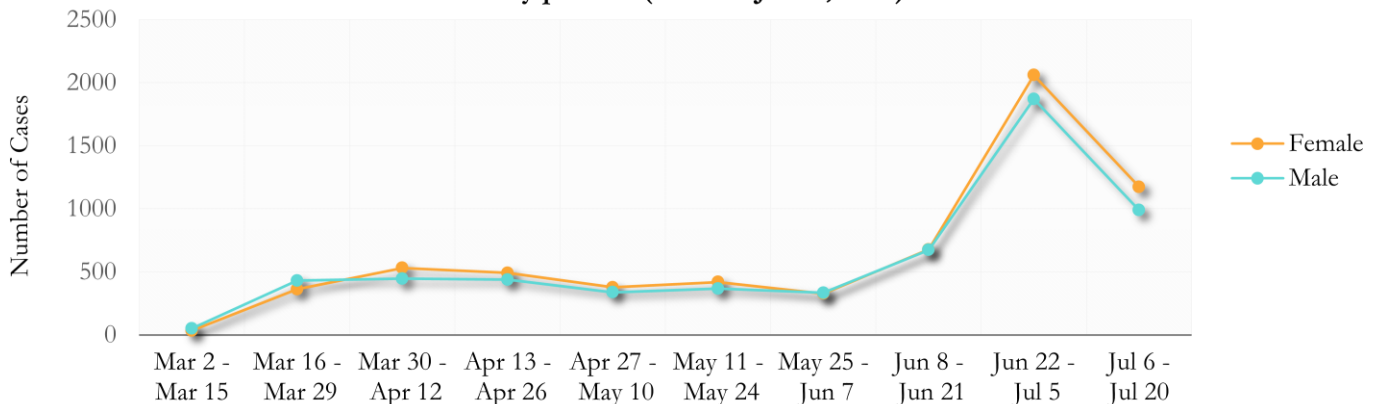


Atlanta metro has consistently accounted for the majority of newly diagnosed cases in Fulton County.

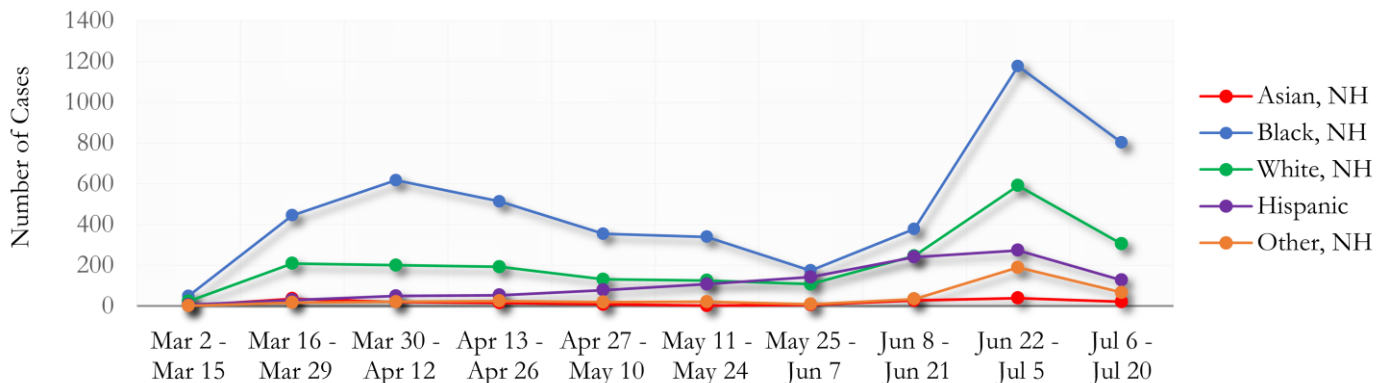
\*North - Includes all Fulton cities north of Atlanta metro (Alpharetta, Milton, Johns Creek, Roswell, Sandy Springs, Mountain Park)

\*South - Includes all Fulton cities south of Atlanta (College Park, Chattahoochee Hills, East Point, Hapeville, Palmetto, South Fulton, Fairburn, and Union City)

**Fig. 11. Trends in Gender Distribution of COVID -19 Diagnoses in Fulton County by 14-day periods (Mar 02- Jul 20, 2020)**

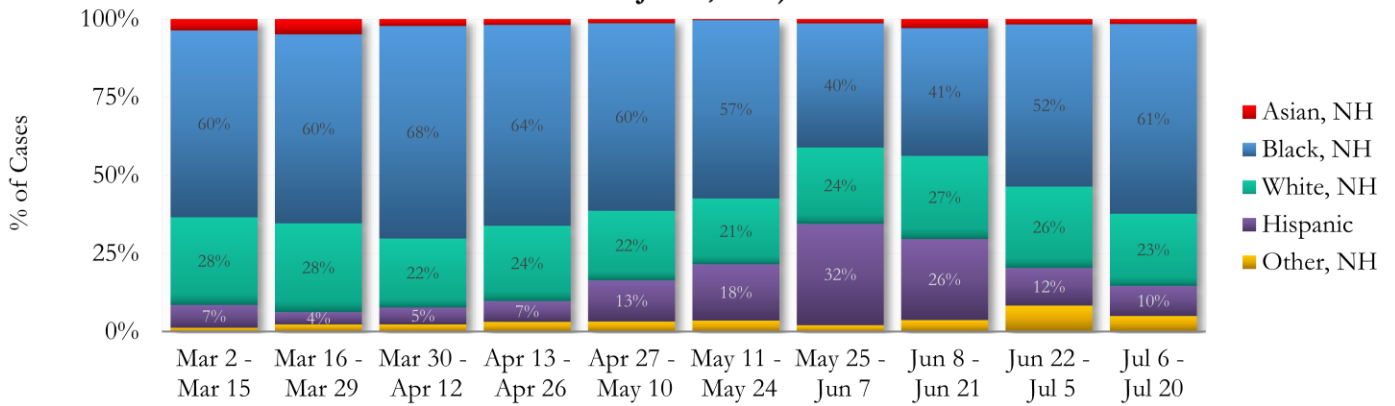


**Fig. 12. Trends in Racial Distribution of COVID -19 Diagnoses in Fulton County by 14-day periods (Mar 02 - Jul 20, 2020)**

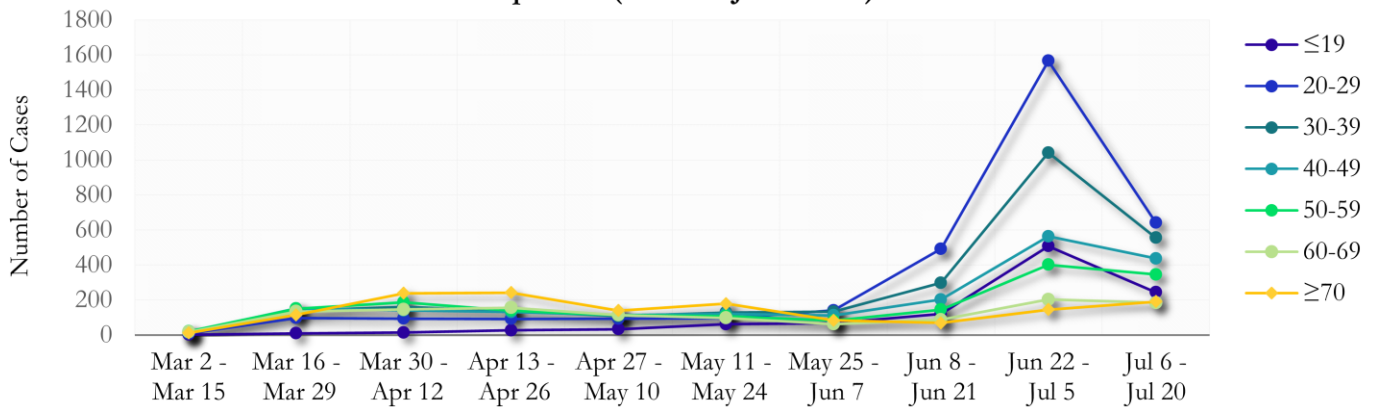


About 30% of COVID cases are missing data on patient race and ethnicity. Of cases with race and ethnicity reported, majority are Black non-Hispanic, followed by a smaller number of cases reporting White (non-Hispanic and Hispanic) race.

**Fig. 13. Racial Distribution of COVID -19 Cases in Fulton County by 14-day periods (Mar 02- Jul 20, 2020)**

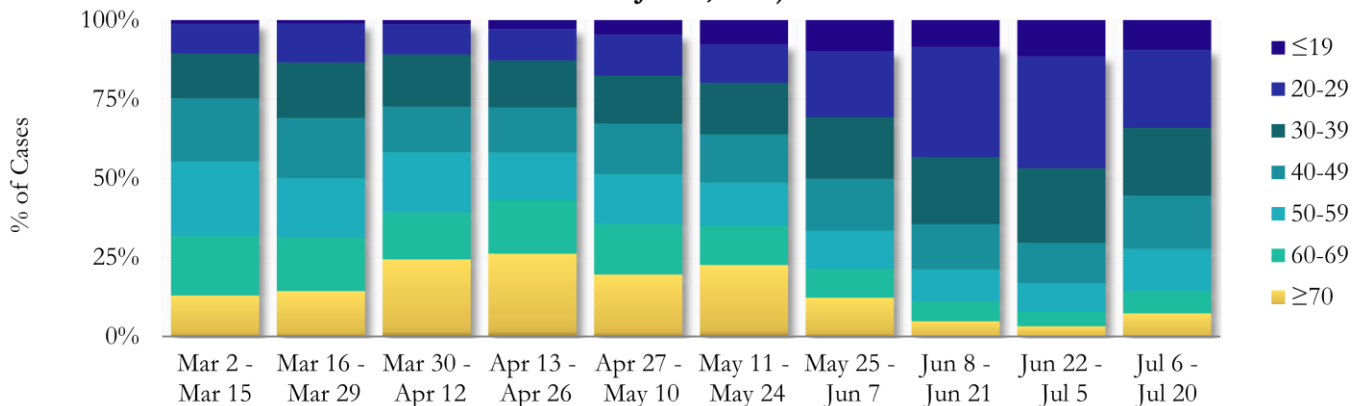


**Fig. 14. Trends in Age Distribution of COVID -19 Diagnoses in Fulton County by 14-day periods (Mar 02 - Jul 20 2020)**



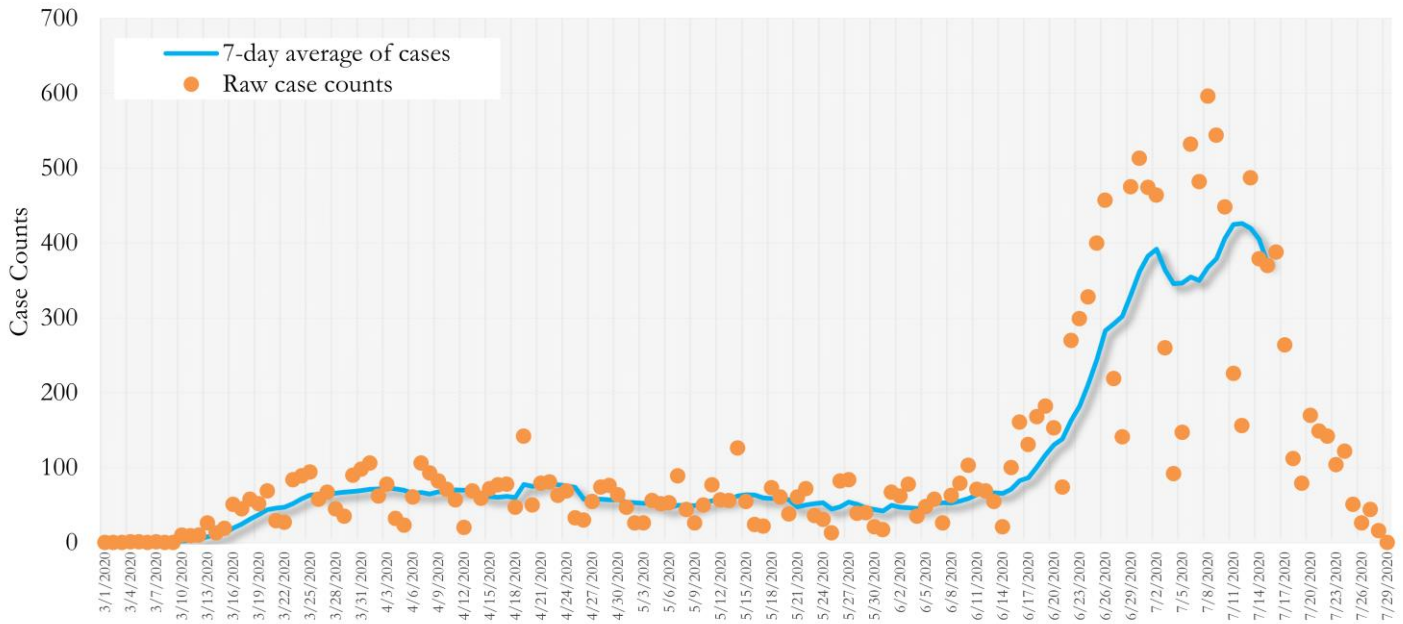
Earlier (March-May 2020) large proportions of reported cases were among persons aged 60 and older. However, starting in June, a much higher number of cases were among persons aged between 20-29 years.

**Fig. 15. Age Distribution of COVID -19 Cases in Fulton County by 14-day periods (Mar 02- Jul 20, 2020)**



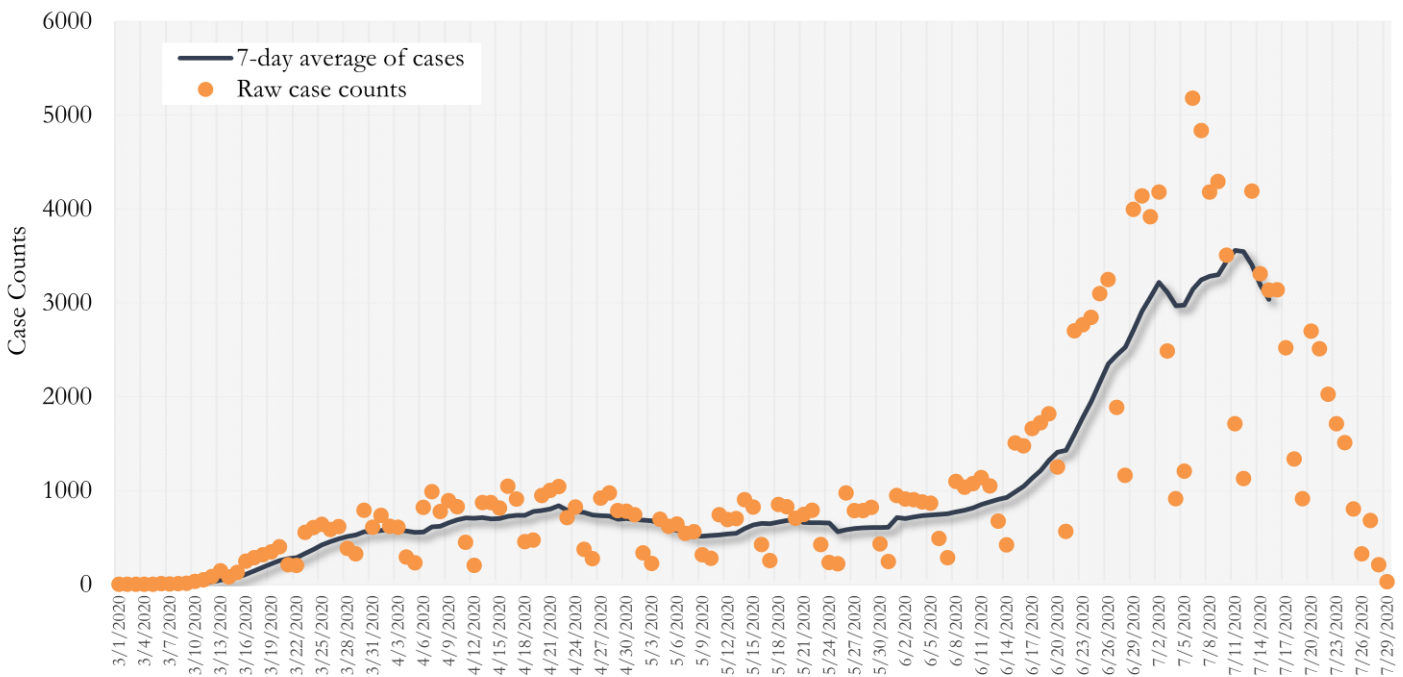
**TRENDS IN COVID-19 CASES, HOSPITALIZATIONS AND DEATHS (7-DAY MOVING AVE.)**

**Fig. 16. New COVID-19 Cases in Fulton County Daily (Averaged over 7 days)**



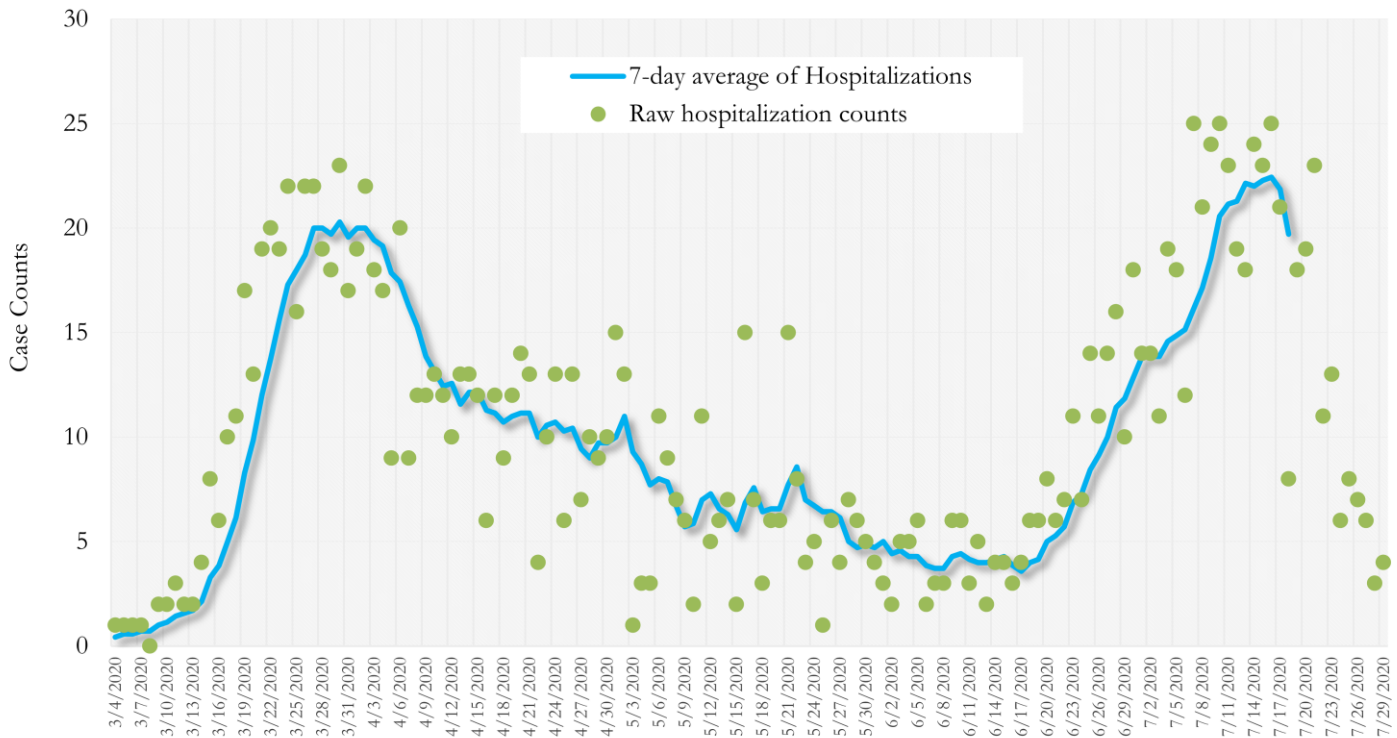
\*Date of collection of first positive sample used (report creation date used where sample collection date is missing). Graph above reflects the trend in COVID-19 diagnosis. Due to the high volume of testing in recent weeks, there have been delays in reporting lab results. Thus, the trend is subject to change as more lab results get added to the state surveillance database.

**Fig. 17. New COVID-19 Cases in Georgia State Daily (Averaged over 7 days)**



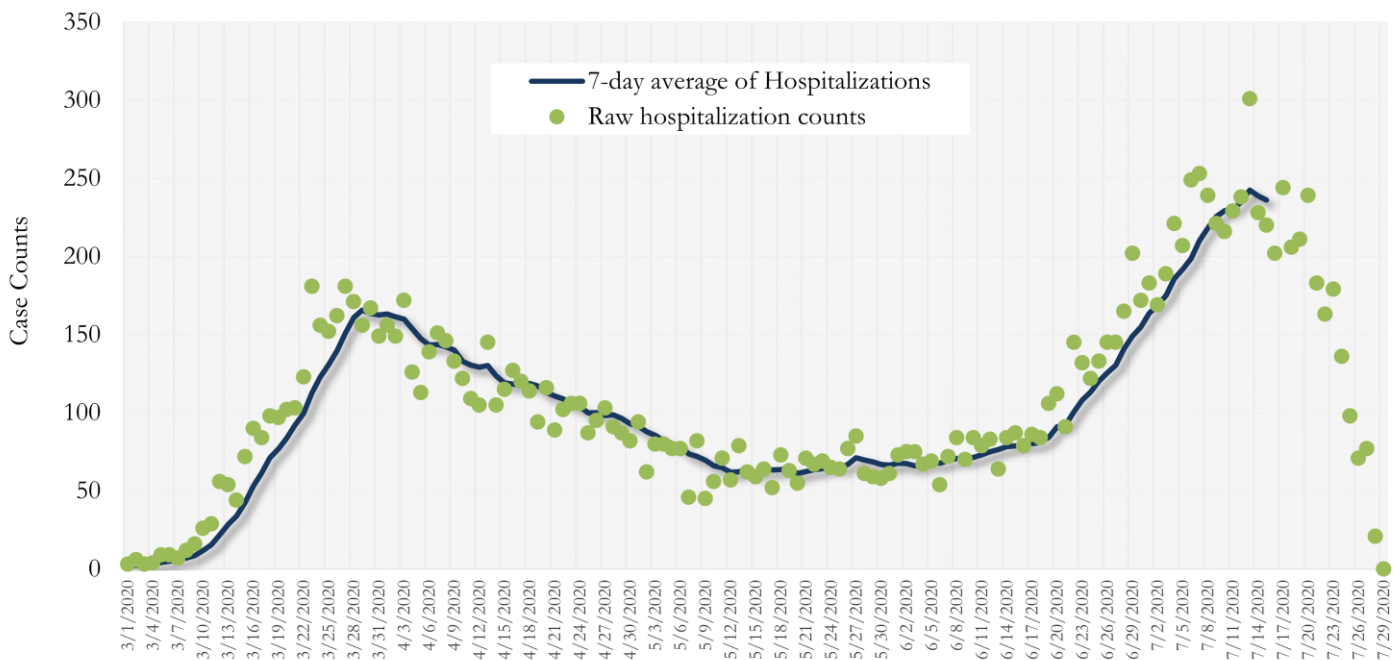
\*Date of collection of first positive sample used (report creation date used where sample collection date is missing). Graph above reflects the trend in COVID-19 diagnosis. Due to the high volume of testing in recent weeks, there have been delays in reporting lab results. Thus, the trend is subject to change as more lab results get added to the state surveillance database.

**Fig. 18. COVID-19 Hospitalizations in Fulton County Daily (Averaged over 7 days)**



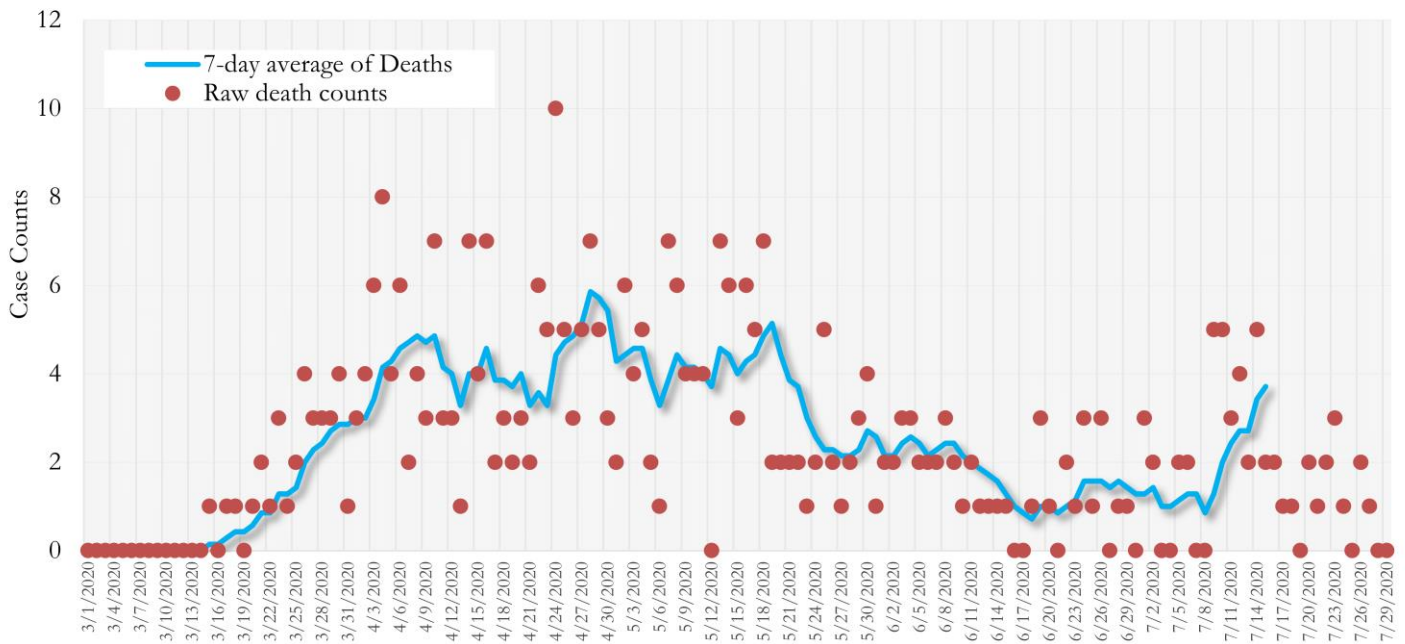
\*Reported date of hospital admission used. Graph above reflects the trend in COVID-19 hospitalizations. Due to the high volume of new cases being added daily, there have been delays in reporting hospitalization data. Thus, the trend is likely to change as more hospitalization data is reported in the state surveillance database.

**Fig. 19. COVID-19 Hospitalizations in Georgia State Daily (Averaged over 7 days)**



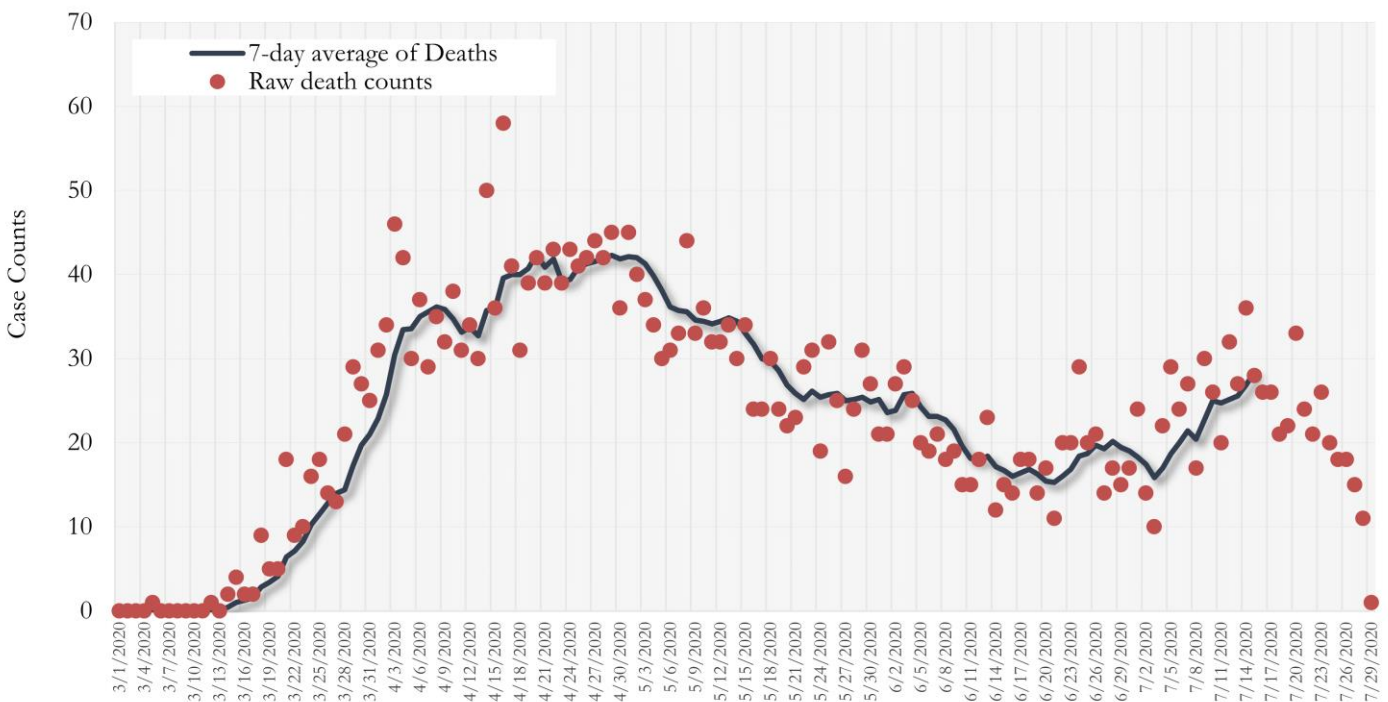
\*Reported date of hospital admission used. Graph above reflects the trend in COVID-19 hospitalizations. Due to the high volume of new cases being added daily, there have been delays in reporting hospitalization data. Thus, the trend is likely to change as more hospitalization data is reported in the state surveillance database.

Fig. 20. COVID-19 Deaths in Fulton County Daily (Averaged over 7 days)



\* Reported date of death used. Graph above reflects the trend in deaths attributed to COVID-19. The trend is likely to change as more data on deaths among persons with COVID-19 is reported in the state surveillance database.

Fig. 21. COVID-19 Deaths in Georgia State Daily (Averaged over 7 days)

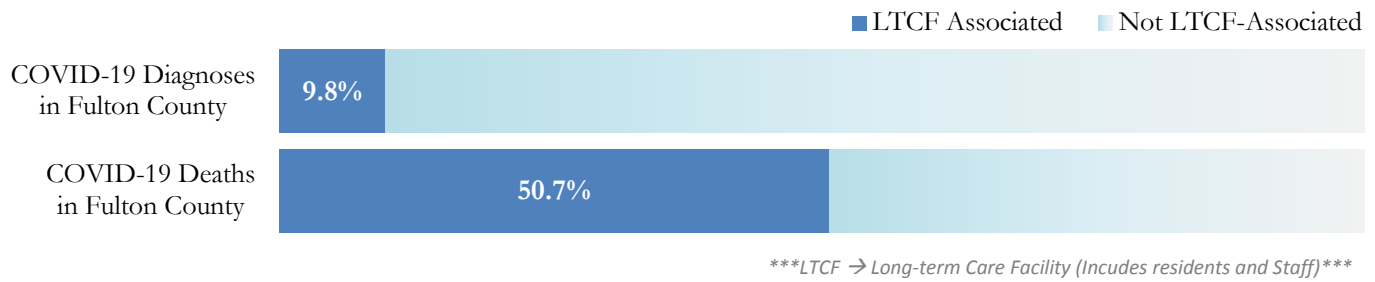


\* Reported date of death used. Graph above reflects the trend in deaths attributed to COVID-19. The trend is likely to change as more data on deaths among persons with COVID-19 is reported in the state surveillance database.

## COVID-19 IN LONG-TERM CARE FACILITIES IN FULTON COUNTY

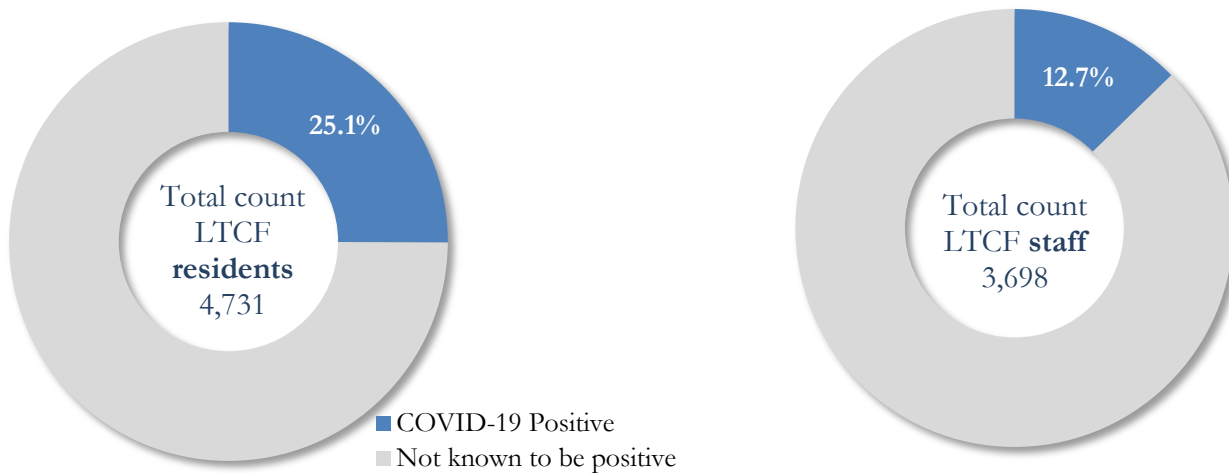
Older persons (aged 65 years and older) and persons who live in nursing homes or other long-term care facilities seem to be at higher risk for developing more serious complications from COVID-19. Extra precautions are recommended for individuals within this risk groups – Centers for Disease Control and Prevention (CDC 2020) <https://www.cdc.gov/coronavirus/2019-ncov/need-extra-precautions/people-at-higher-risk.html>

Fig. 22. COVID-19 Diagnoses and Deaths in Fulton County Associated with Long-Term Care Facilities



## COVID-19 POSITIVITY:

Fig. 23. COVID-19 Positivity at 59 reporting Long-Term Care Facilities (LTCF) in Fulton County



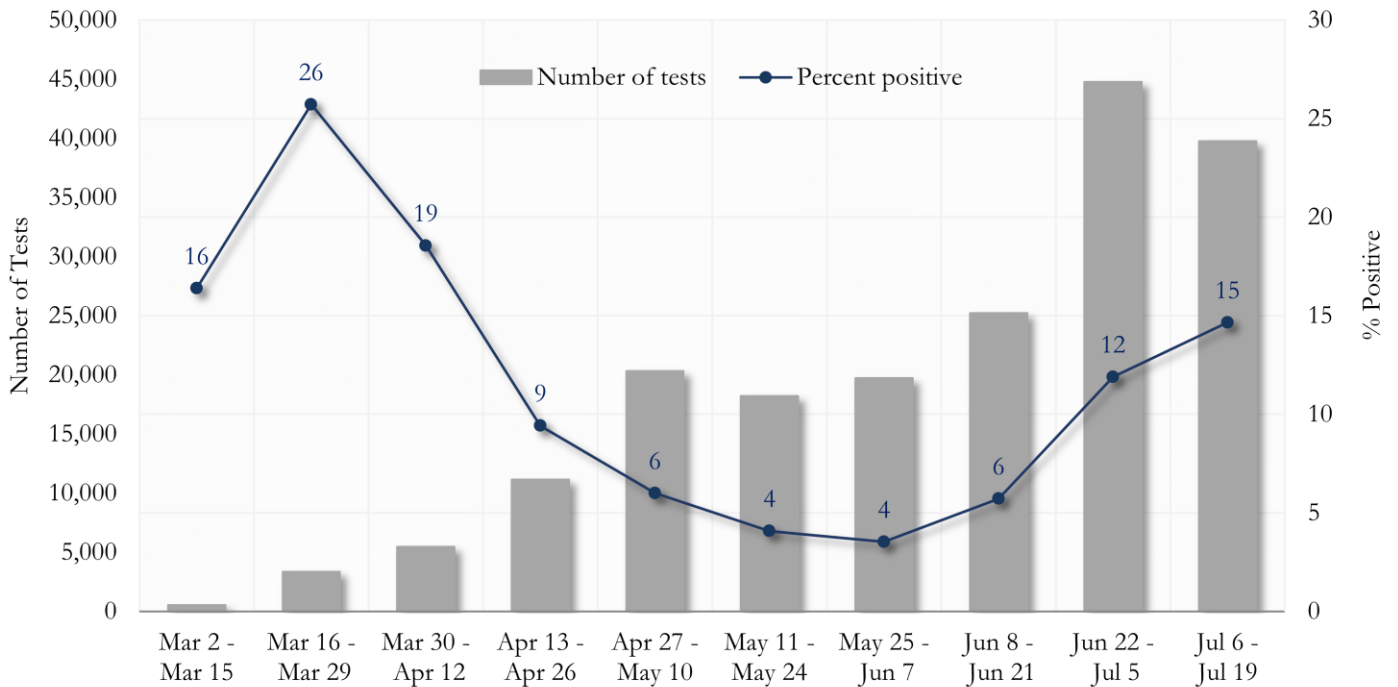
COVID-19 Cases, Hospitalizations, and Deaths among 59 reporting Long-Term Care Facilities in Fulton County

	LTCF Residents (n=4,731)			LTCF Staff (n=3,698)		
	Cases	Hospitalizations	Deaths	Cases	Hospitalizations	Deaths
<b>Average</b> (count per fac.) <sup>1</sup>	20	5	3	8	1	<0.1
<b>Median</b> (count per fac.) <sup>1</sup>	5	2	0	4	0	0
<b>Lowest counts</b>	0	0	0	0	0	0
<b>Highest counts</b>	136	48	29	53	8	1
<b>Total Count</b>	<b>1186 (25.1%)<sup>a</sup></b>	<b>277 (23.4%)<sup>b</sup></b>	<b>191 (16.1%)<sup>b</sup></b>	<b>470 (12.7%)<sup>a</sup></b>	<b>30 (6.3%)<sup>b</sup></b>	<b>2 (&lt;0.1%)<sup>b</sup></b>

<sup>a</sup> Percentage shown reflects proportion of total residents/staff tested who were positive (i.e. COVID-19 Positivity). | <sup>b</sup> Percentages shown are proportions of persons residents/staff diagnosed with COVID-19 who were hospitalized or died after diagnoses.

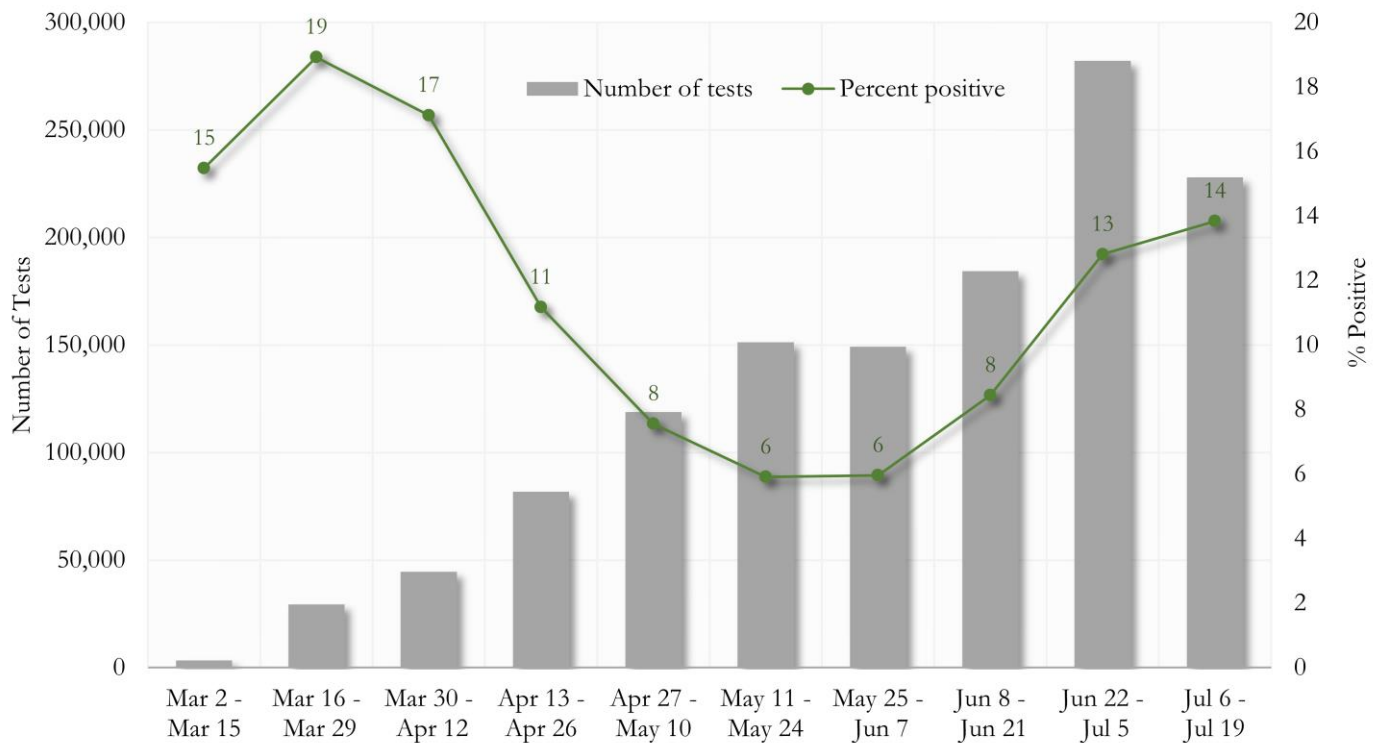
## COVID-19 TESTING AND POSITIVITY IN FULTON COUNTY

**Fig. 24. Trends in Positive COVID-19 Tests in Fulton County by 14-day Periods**



\*Data on Polymerase Chain Reaction (PCR) tests only included.

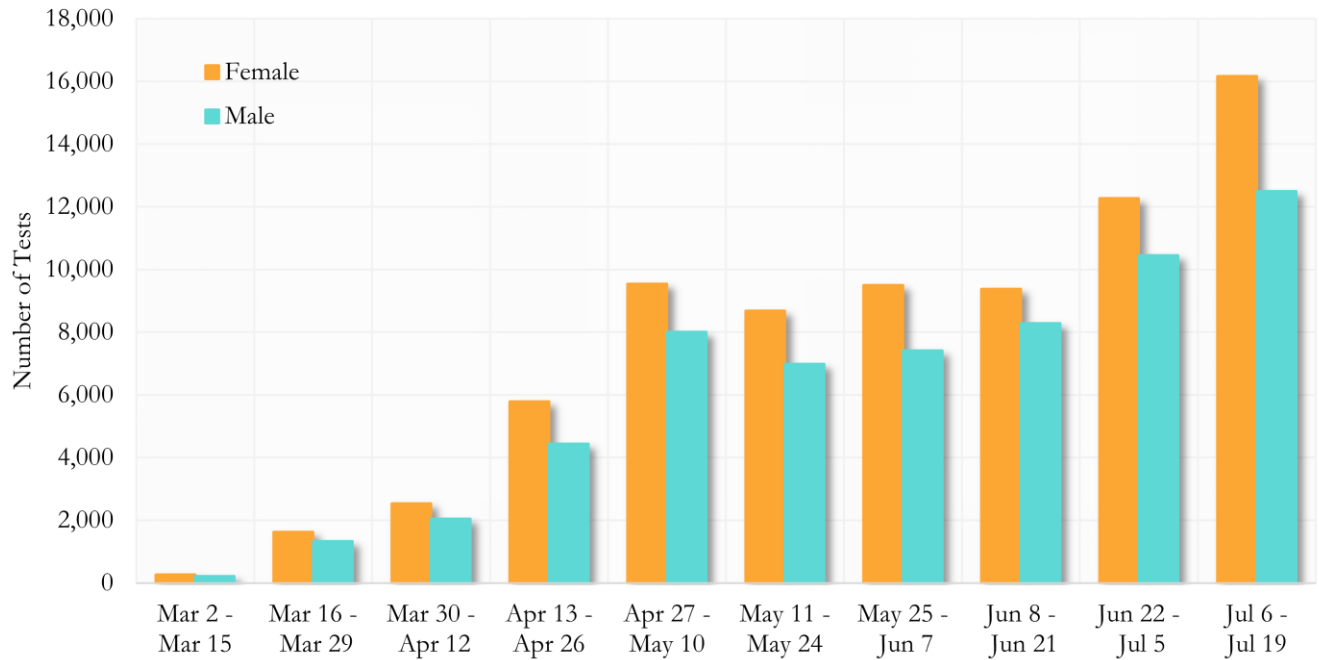
**Fig. 25. Trends in Positive COVID-19 Tests in Georgia by 14-day Periods**





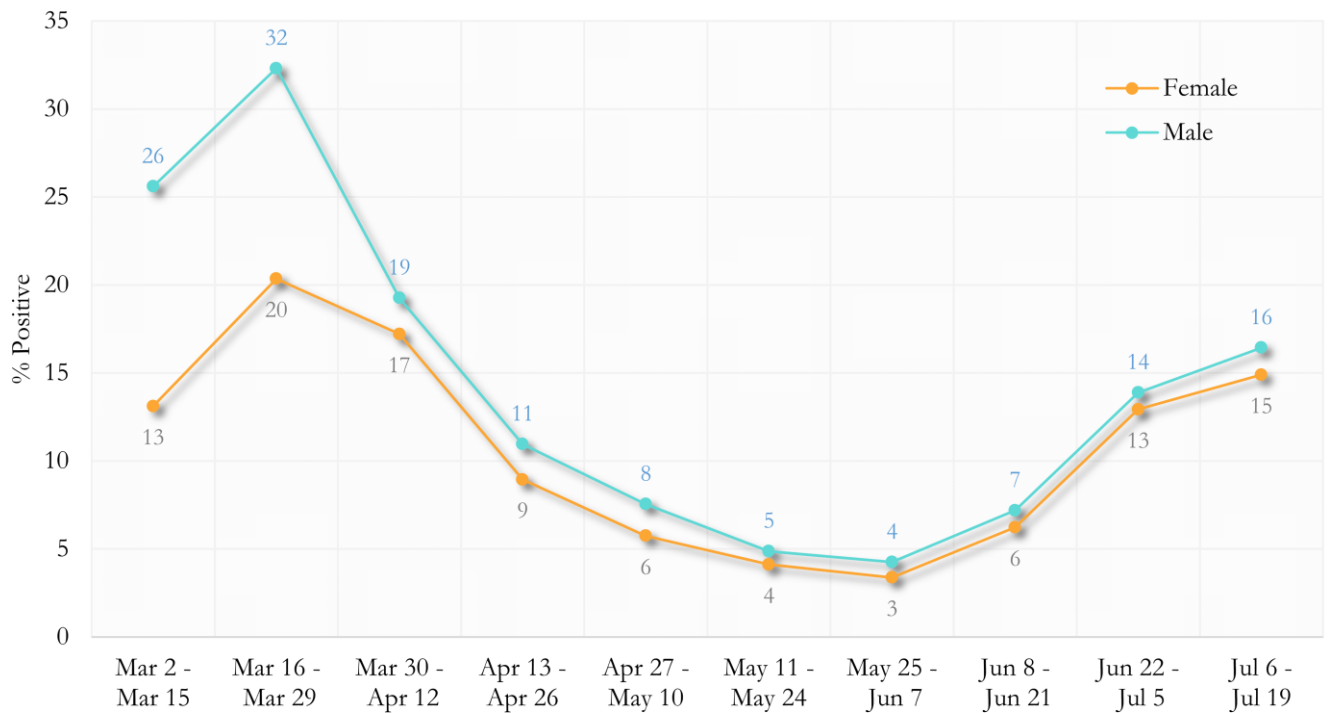
\*Data on Polymerase Chain Reaction (PCR) tests only included.

**Fig. 26. COVID-19 Tests by Gender in Fulton County by 14-day Periods**



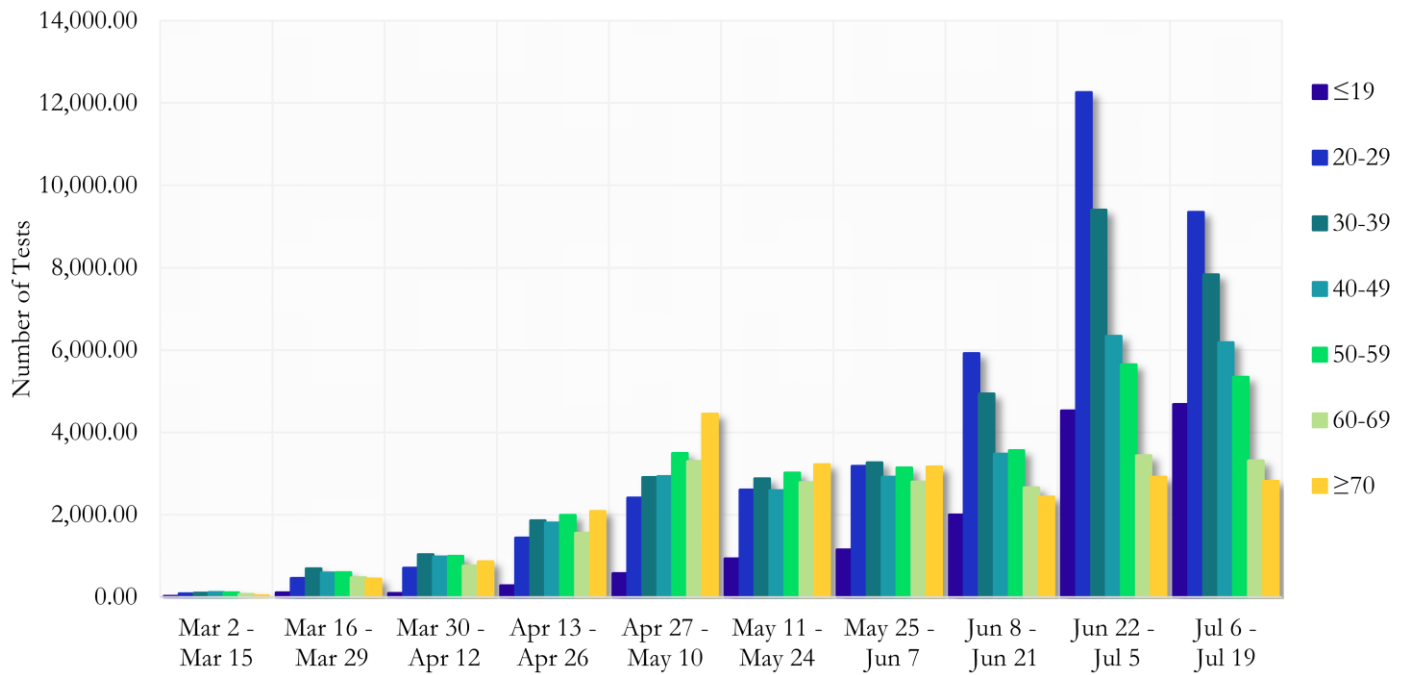
\*Data on Polymerase Chain Reaction (PCR) tests only included.

**Fig. 27. Percent Positive COVID-19 Tests by Gender in Fulton County by 14-day Periods**



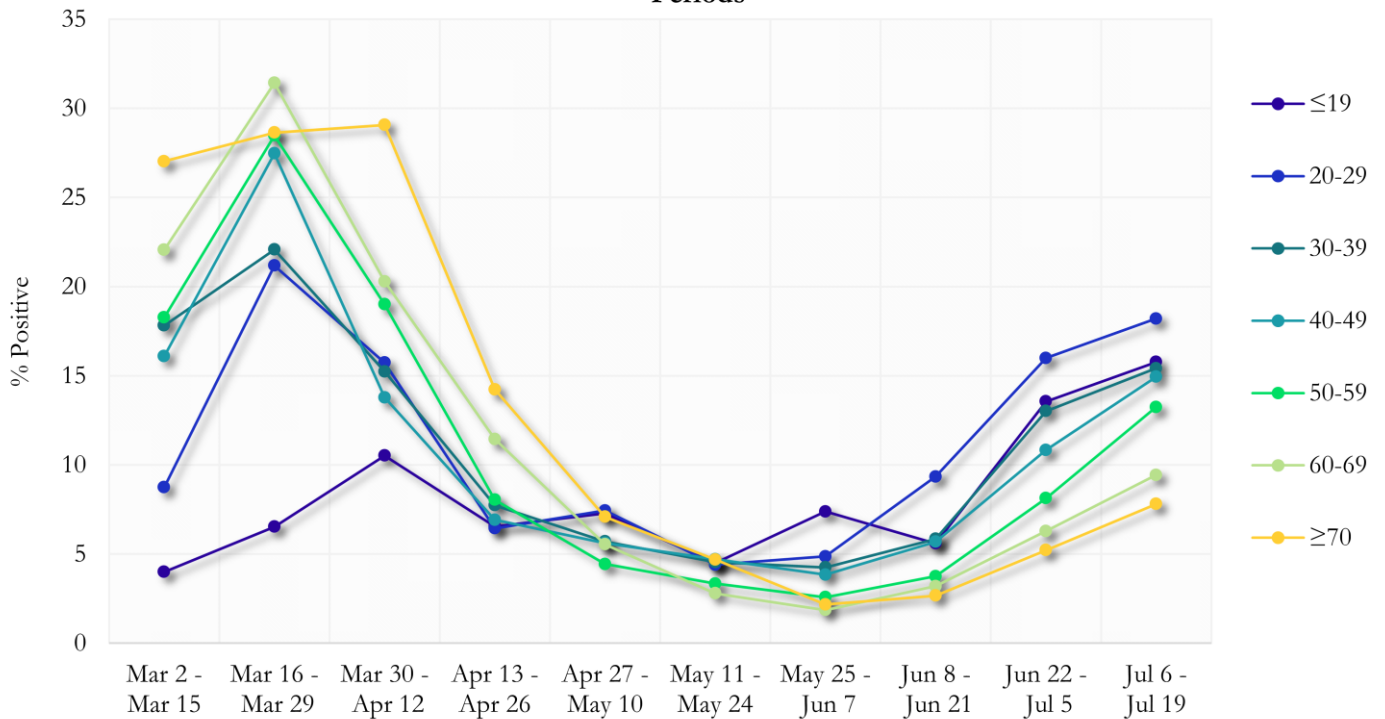
\*Data on Polymerase Chain Reaction (PCR) tests only included.

**Fig. 28. COVID-19 Tests by Age in Fulton County by 14-day Periods**



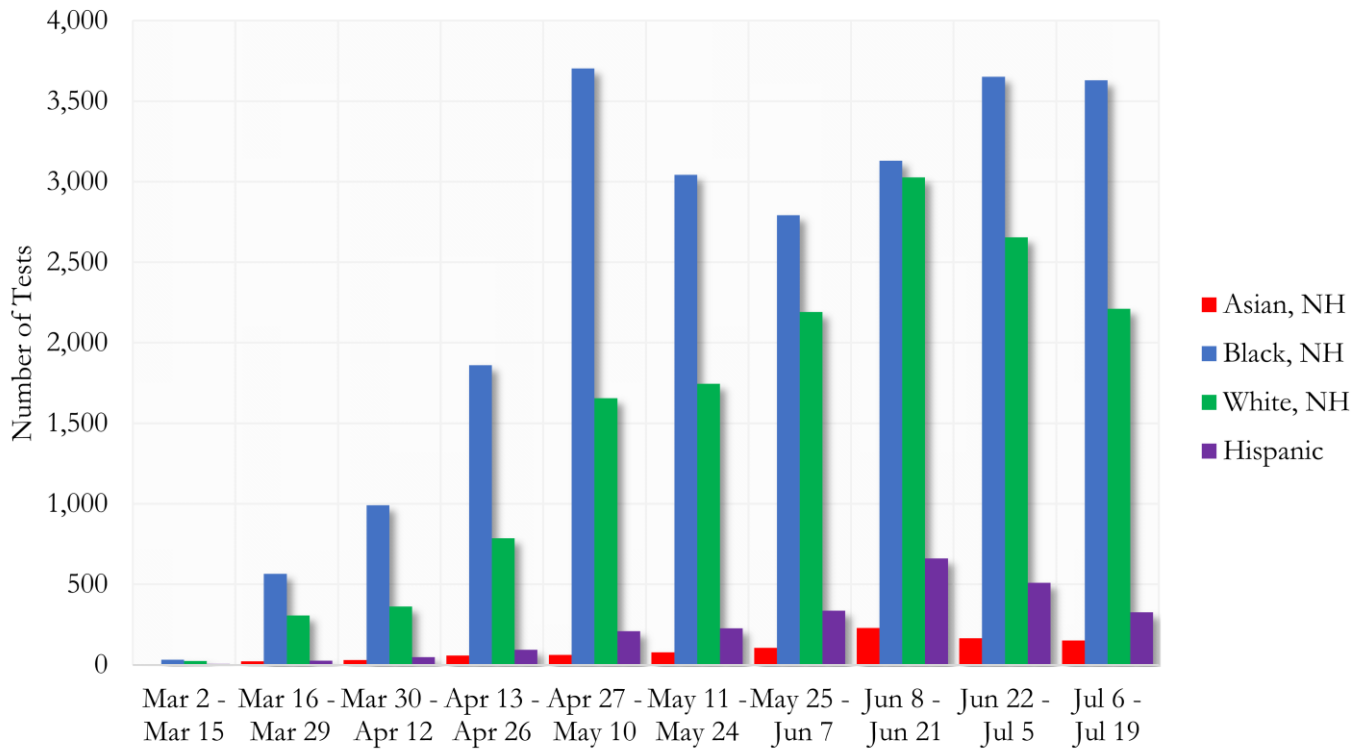
\*Data on Polymerase Chain Reaction (PCR) tests only included.

**Fig. 29. Percent Positive COVID-19 Tests by Age Group in Fulton County by 14-day Periods**



\*Data on Polymerase Chain Reaction (PCR) tests only included.

**Fig. 30. COVID-19 Tests by Race and Ethnicity in Fulton County by 14-day Periods**



**Fig. 31. Percent Positive COVID-19 Tests by Race and Ethnicity in Fulton County by 14-day Periods**

