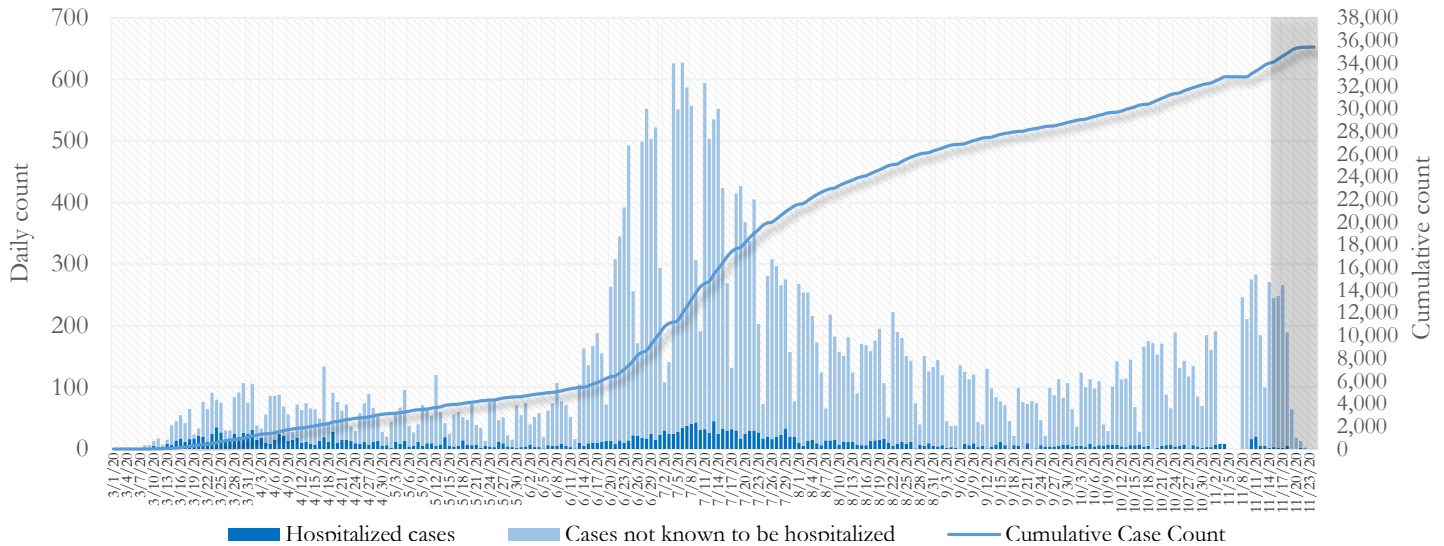


## SUMMARY

- As of November 24, 2020, Fulton County has recorded **36,293 cases of the 2019 novel coronavirus (COVID-19)** and **656 confirmed COVID-19 deaths**. 81 deaths are currently being reviewed by GA DPH to confirm cause of death.
- Of the **3,059 new cases** between November 4 and November 17, the central portion of the county (Atlanta) accounted for 43% while the northern and southern parts accounted for 36% and 17% respectively.
- By city, new COVID-19 case rates range from 160.0 per 100,000 persons (Mountain Park) to 348.3 per 100,000 persons (Union City). [**Fulton County Diagnoses Rates (per 100,000 persons): Cumulative – 3301.8; Incidence –278.3**]. See map showing incidence case rate by ZIP code on Pg.17.
- Among all persons diagnosed with COVID-19 in Fulton County since June 1, **5.9% required hospitalization and 1.2% died**.
- Of all testing done in Fulton County between November 9 and November 22, the percent positivity rate was **5.6%**.

**Fig 1. Daily and Cumulative COVID-19 cases in Fulton County, GA**



\*Counts shown reflect the number of confirmed cases as of 9:30 am on 11/24/20 using the date of first positive sample collection. Where date of sample collection was not available or missing, the date of report creation in GA SENDSS was used instead. **Note:** Delays in data reporting may cause changes in data counts, particularly in the shaded portion. Data throughout this report are preliminary and subject to ongoing data cleaning processes, and thus are subject to change. This report includes data on confirmed PCR tests only. For data on antigen testing, see the [GA DPH County Indicator Reports here](#).

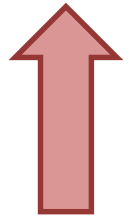
## DISTRIBUTION OF COVID-19 CASES BY REGION

**New cases:** 43% of the new COVID-19 cases in the past 2 weeks occurred in Atlanta while 36% and 17% occurred in the Northern and Southern regions of the county respectively.

Fulton Region	% Cumulative count	% New cases*
Atlanta	44.2%	43.1%
North <sup>1</sup>	29.7%	36.2%
South <sup>2</sup>	19.9%	16.6%
Unincorporated/Unknown	6.1%	4.1%

<sup>1</sup>Includes all Fulton County cities north of Atlanta (Alpharetta, Johns Creek, Milton, Mountain Park, Roswell, Sandy Springs) |<sup>2</sup>Includes all cities south of Atlanta (Chattahoochee Hills, College Park, East Point, Fairburn, Hapeville, Palmetto, South Fulton, and Union City) \***New cases:** Cases diagnosed in the past 2 weeks only (between 11/4/20 – 11/17/20).

In the recent two week reporting period (11/4-11/17), there were more new cases of COVID-19 in Fulton County than the previous two weeks (10/21-11/3).



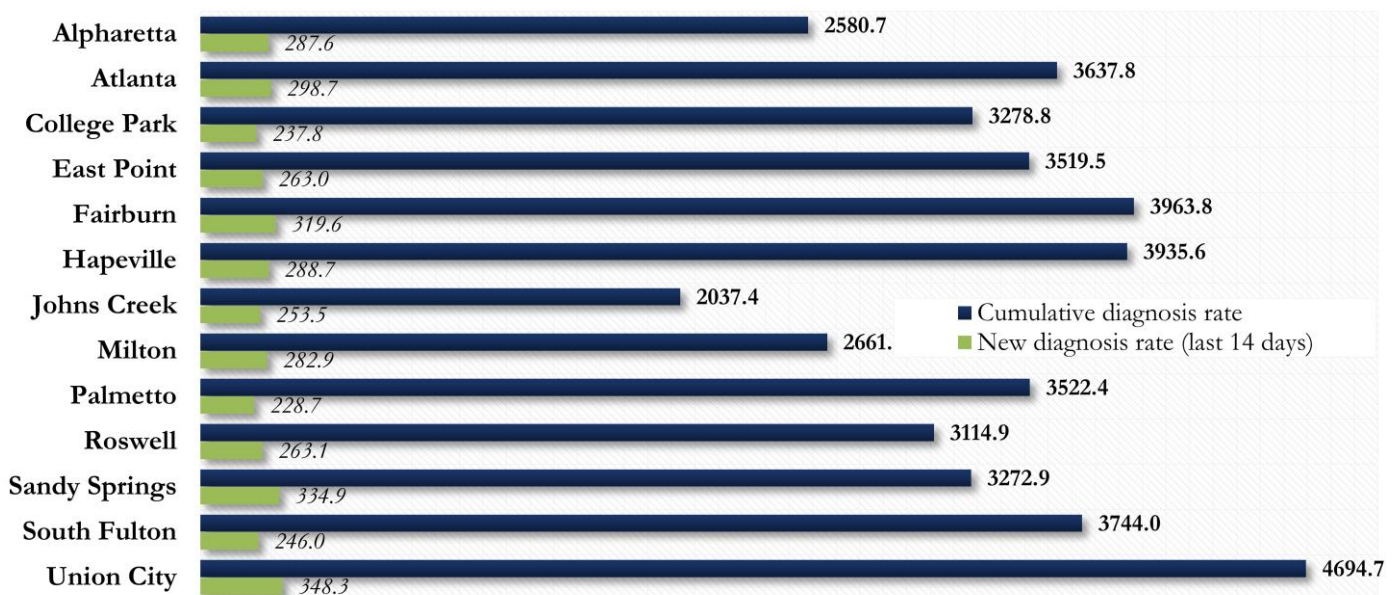
\*Delayed a week to account for testing results turnaround time.

## COVID-19 CASE COUNTS AND RATES BY CITY

	Prior (11/20/20)	Current Total (11/24/20)			New Cases (Period: 10/21/20 – 11/17/20) <sup>1</sup>			
	Count	Count	%	Cum. Rate <sup>2</sup>	Recent 14 d. (11/4–11/17)	Prior 14 d. (10/21–11/3)	% change <sup>3</sup>	Rate <sup>4</sup> (Last 14 d).
Alpharetta	1594	1669	4.6%	2580.7	186	97	↑ 91.8%	287.6
Atlanta	15556	16049	44.2%	3637.8	1318	872	↑ 51.1%	298.7
Chattahoochee Hills	1	1	0.0%	-	0	0	-	-
College Park	446	455	1.3%	3278.8	33	16	↑ 106.3%	237.8
East Point	1200	1231	3.4%	3519.5	92	44	↑ 109.1%	263.0
Fairburn	563	583	1.6%	3963.8	47	24	↑ 95.8%	319.6
Hapeville	257	259	0.7%	3935.6	19	<10	↑ 111.1%	288.7
Johns Creek	1627	1704	4.7%	2037.4	212	127	↑ 66.9%	253.5
Milton	975	1016	2.8%	2661.7	108	77	↑ 40.3%	282.9
Mountain Park	10	10	0.0%	1600.0	<10	<10	↓ 50.0%	160.0
Palmetto	149	154	0.4%	3522.4	10	<10	↑ 42.9%	228.7
Roswell	2836	2936	8.1%	3114.9	248	131	↑ 89.3%	263.1
Sandy Springs	3328	3450	9.5%	3272.9	353	226	↑ 56.2%	334.9
South Fulton	3469	3561	9.8%	3744.0	234	151	↑ 55.0%	246.0
Union City	954	984	2.7%	4694.7	73	41	↑ 78.0%	348.3
Unknown	3328	2231	6.1%	-	123	61	-	-

<sup>1</sup>**New cases:** Cases diagnosed in most recent 28 days (based on reported dates of positive sample collection). To allow for lag in reporting results of new diagnoses from samples collected in the most recent week, data used for incident diagnoses analyses were moved back by one week. <sup>2</sup>**Cumulative diagnosis rate:** Population estimates from US Census Bureau used to calculate cumulative diagnoses rate. All rates shown are per 100,000 persons. <sup>3</sup>**% change:** These reflect the percentage increase or decrease in new diagnoses between the 14 days preceding the most recent 7 days and the 14 days preceding that. <sup>4</sup>**(Incidence) Rate:** Rate of new diagnoses in the last 14 day period preceding the immediate past week. **\*\*Data cleaning** (either during case interviews or address geo-coding) may lead to reassignment of few cases from one territory to another based on their corrected addresses. These may appear as “decreases” when compared to the previous day’s count. These do not reflect errors in the data collection or analysis process but only reflect the minor day-to-day fluctuations in case counts that arise in an evolving public health database like COVID’s. **Note:** All data reported are preliminary and subject to change.

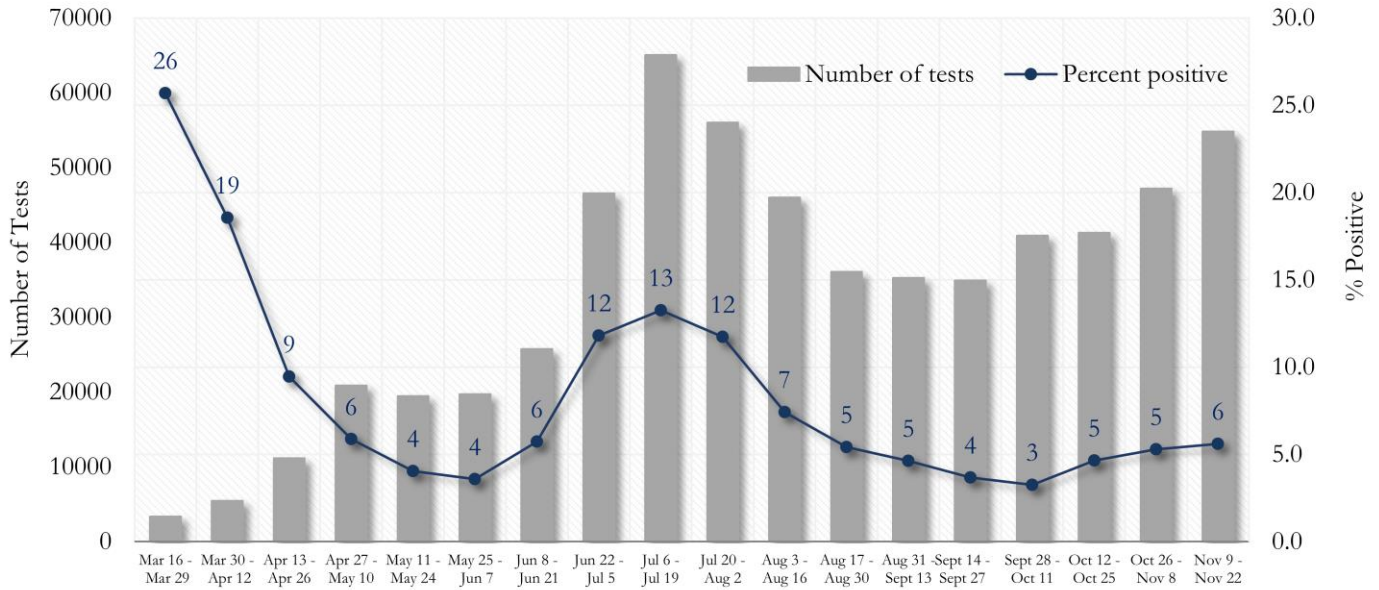
Fig. 2. Incident &amp; Cumulative Diagnoses Rates for COVID-19 by City



\*Rates shown are per 100,000 persons | **Note:** Mass testing in specific locations (e.g. long term care facilities) may cause sharp increases in the cumulative rate of COVID-19 diagnosis in those territories. All data shown are preliminary and are subject to change as testing results get updated.

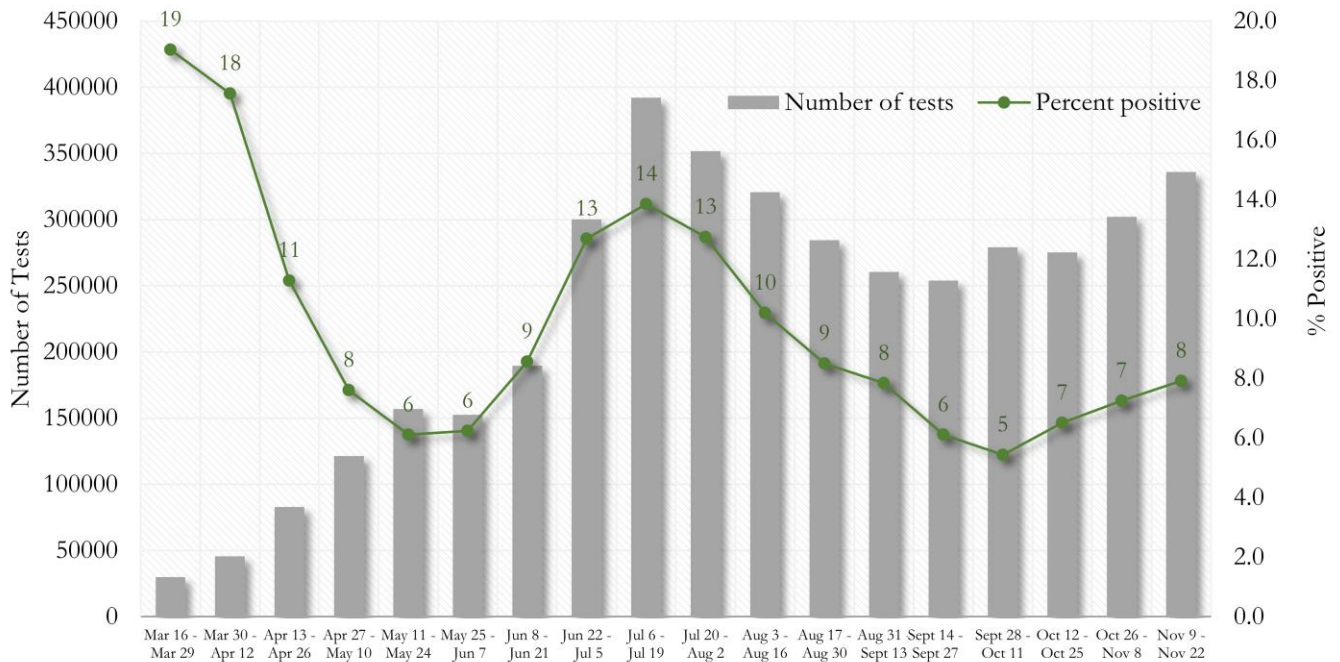
**COVID-19 TESTING AND POSITIVITY IN FULTON COUNTY AND GEORGIA**

**Fig. 3. Trends in Positive COVID-19 Tests in Fulton County by 14-day Periods**



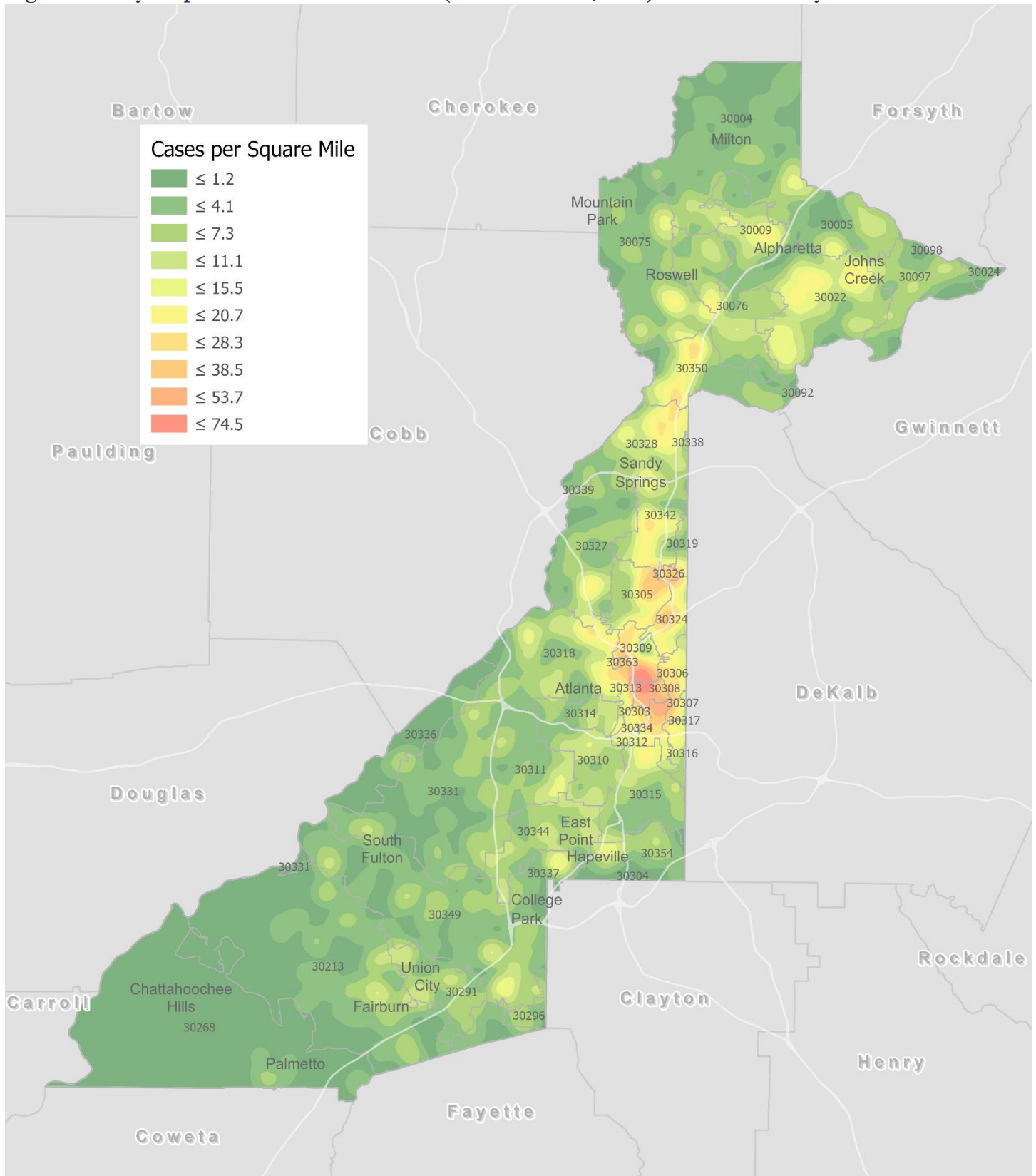
\*Data on Polymerase Chain Reaction (PCR) tests only included. This rate is subject to change as more test results are reported. An increase of testing in advance of the holiday may affect the recent rate.

**Fig. 4. Trends in Positive COVID-19 Tests in Georgia by 14-day Periods**



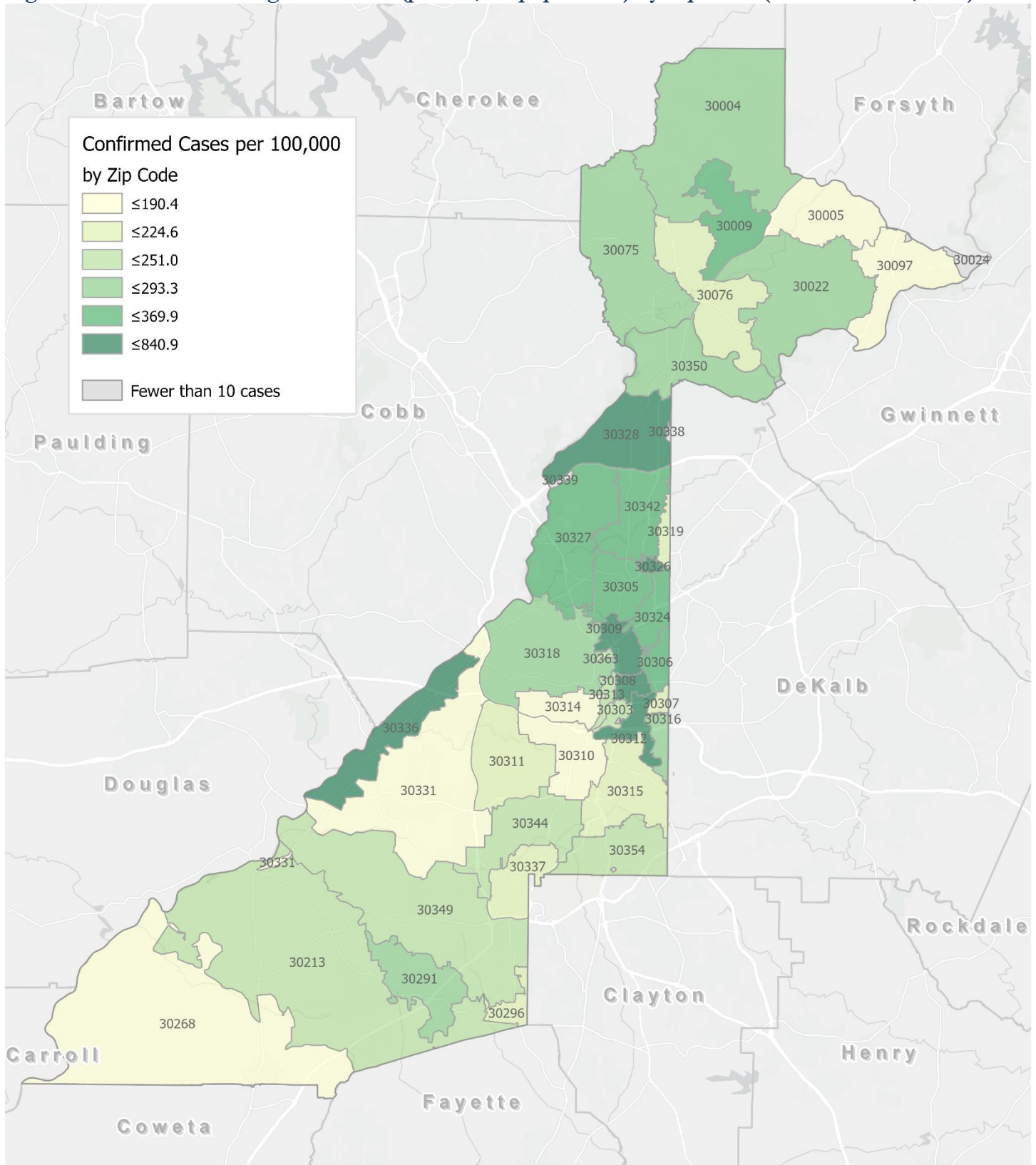
\*Data on Polymerase Chain Reaction (PCR) tests only included. This rate is subject to change as more test results are reported. An increase of testing in advance of the holiday may affect the recent rate.

Fig. 5. Density Map – New COVID-19 Cases (Nov 4– Nov 17, 2020) in Fulton County



**New COVID-19 cases:** Cases diagnosed in most recent 14 days (based on reported dates of positive sample collection). To allow for lag in reporting results of positive cases from samples collected in the immediate past 7 days, data used for incident diagnoses analyses are moved back by one week. Map reflects new COVID-19 cases diagnosed between Nov 4<sup>th</sup> and Nov 17<sup>th</sup>, 2020 across Fulton County, excluding LTCF cases.

Fig. 6. New COVID-19 Diagnoses Rates (per 100,000 population) by Zip Code (Nov 4– Nov 17, 2020)



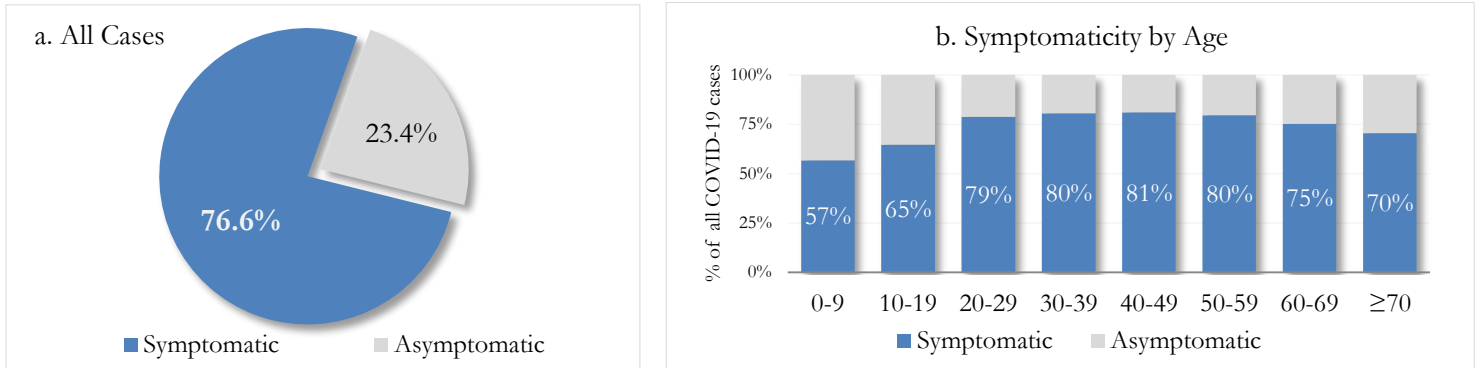
\*Rates shown are per 100,000 populations.

**New COVID-19 cases:** Cases diagnosed in most recent 14 days (based on reported dates of positive sample collection). To allow for lag in reporting results of positive cases from samples collected in the immediate past 7 days, data used for incident diagnoses analyses are moved back by one week. Data used excludes outbreak-related cases at long-term care facilities and map shown reflects only the new non-LTCF cases diagnosed between the dates shown in map title. See page 17 for zip code break down table.

## REPORTING SYMPTOMS AMONG PERSONS WITH COVID-19 IN FULTON

People with COVID-19 have reported a wide range of symptoms ranging from mild symptoms to severe illness. Symptoms may appear 2-14 days after exposure to the virus. Symptoms reported include: cough, shortness of breath/difficulty breathing, fever, chills, muscle pain, headache, sore throat, congestion, nausea or vomiting, diarrhea, or new loss of taste or smell – Centers for Disease Control and Prevention (CDC)  
<https://www.cdc.gov/coronavirus/2019-ncov/symptoms-testing/symptoms.html>

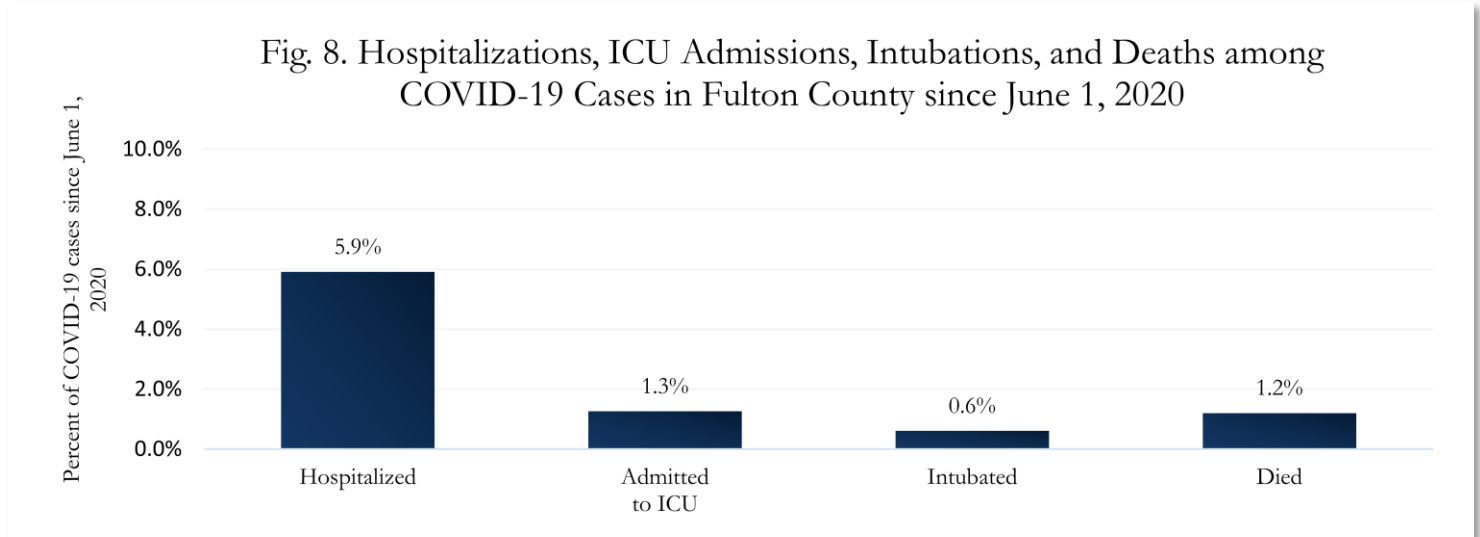
Fig. 7a & b. Total Proportion Reporting Symptoms in Fulton County



\*\*\*COVID-19 cases who have been case interviewed or had medical charts reviewed as of 11/24/20 only. n = 24,481\*\*\*

## COVID-19 HOSPITALIZATIONS, ICU ADMISSIONS AND DEATHS IN FULTON

Fig. 8. Hospitalizations, ICU Admissions, Intubations, and Deaths among COVID-19 Cases in Fulton County since June 1, 2020



## DEMOGRAPHIC DISTRIBUTIONS – COVID-19 CASES AND DEATHS

### A. Distribution of COVID-19 cases by gender, age, and race in Fulton County by Fulton Region

	North Fulton Cities <sup>1</sup> Count (%)	Atlanta Count (%)	South Fulton Cities <sup>2</sup> Count (%)	Unknown City Count (%)	All Fulton Count (%)
<b>Total COVID-19 cases</b>	10785	16049	7228	2231	36293
<b>Gender:</b> Female	5562 (51.6%)	7924 (49.4%)	4100 (56.7%)	1098 (49.2%)	18684 (51.5%)
Male	5116 (47.4%)	7843 (48.9%)	3052 (42.2%)	1073 (48.1%)	17084 (47.1%)
Unknown*	107 (1.0%)	282 (1.8%)	76 (1.1%)	60 (2.7%)	525 (1.4%)
<b>Age:</b> 0-9	357 (3.3%)	321 (2.0%)	242 (3.3%)	52 (2.3%)	972 (2.7%)
10-19	1518 (14.1%)	1179 (7.3%)	528 (7.3%)	149 (6.7%)	3374 (9.3%)
20-29	2350 (21.8%)	4869 (30.3%)	1377 (19.1%)	580 (26.0%)	9176 (25.3%)
30-39	1665 (15.4%)	3553 (22.1%)	1503 (20.8%)	475 (21.3%)	7196 (19.8%)
40-49	1706 (15.8%)	2086 (13.0%)	1316 (18.2%)	344 (15.4%)	5452 (15.0%)
50-59	1619 (15.0%)	1681 (10.5%)	1000 (13.8%)	291 (13.0%)	4591 (12.6%)
60-69	840 (7.8%)	1097 (6.8%)	665 (9.2%)	171 (7.7%)	2773 (7.6%)
≥70	724 (6.7%)	1212 (7.6%)	591 (8.2%)	160 (7.2%)	2687 (7.4%)
Unknown*	<10	51 (0.3%)	<10	<10	72 (0.2%)
<b>Race:</b> Asian, NH	445 (4.1%)	304 (1.9%)	35 (0.5%)	45 (2.0%)	829 (2.3%)
Black, NH	1234 (11.4%)	7007 (43.7%)	5212 (72.1%)	785 (35.2%)	14238 (39.2%)
White, NH	4821 (44.7%)	4441 (27.7%)	361 (5.0%)	554 (24.8%)	10177 (28.0%)
Hispanic	1954 (18.1%)	1019 (6.3%)	600 (8.3%)	210 (9.4%)	3783 (10.4%)
Other, NH	379 (3.5%)	582 (3.6%)	176 (2.4%)	82 (3.7%)	1219 (3.4%)
Unknown*	1952 (18.1%)	2696 (16.8%)	844 (11.7%)	555 (24.9%)	6047 (16.7%)

\*Unknown includes cases not yet interviewed.

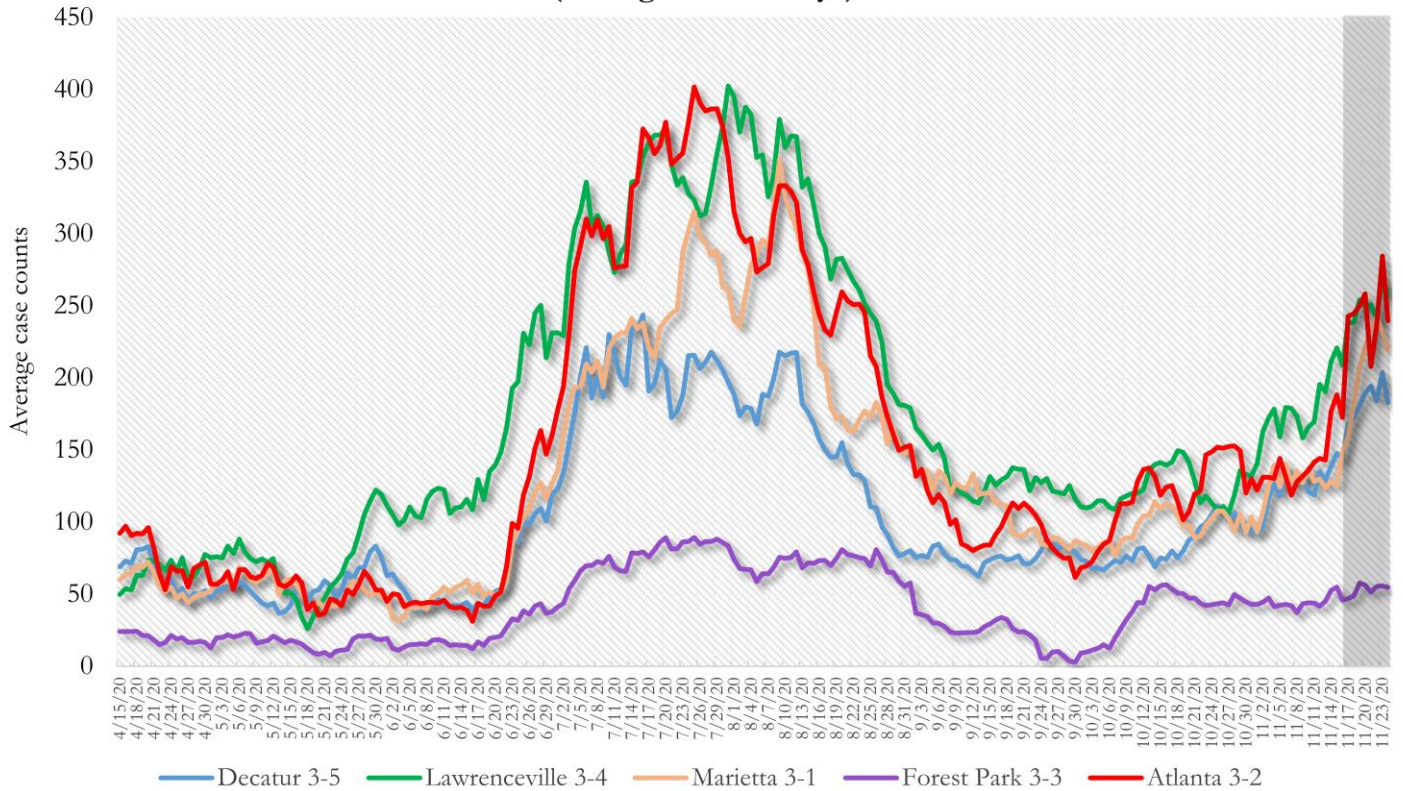
### B. Distribution of COVID-19 deaths by gender, age, and race in Fulton County by Fulton Region

	North Fulton Cities <sup>1</sup> Count (%)	Atlanta Count (%)	South Fulton Cities <sup>2</sup> Count (%)	Unknown City Count (%)	All Fulton Count (%)
<b>Total COVID-19 deaths</b>	144	319	170	23	656
<b>Gender:</b> Female	67 (46.5%)	144 (45.1%)	86 (50.6%)	10 (43.5%)	307 (46.8%)
Male	77 (53.5%)	175 (54.9%)	84 (49.4%)	13 (56.5%)	349 (53.2%)
Unknown	0	0	0	0	0
<b>Age:</b> ≤ 29	<10	<10	<10	0	<10
30-39	<10	<10	<10	<10	12 (1.8%)
40-49	<10	<10	10 (5.9%)	<10	26 (4.0%)
50-59	<10	27 (8.5%)	19 (11.2%)	<10	57 (8.7%)
60-69	17 (11.8%)	61 (19.1%)	38 (22.4%)	<10	117 (17.8%)
≥70	114 (79.2%)	211 (66.1%)	99 (58.2%)	15 (65.2%)	439 (66.9%)
Unknown	0	0	0	0	0
<b>Race:</b> Asian, NH	<10	<10	<10	0	11 (1.7%)
Black, NH	26 (18.1%)	264 (82.8%)	139 (81.8%)	10 (43.5%)	439 (66.9%)
White, NH	99 (68.8%)	44 (13.8%)	21 (12.4%)	11 (47.8%)	175 (26.7%)
Hispanic	15 (10.4%)	<10	<10	<10	29 (4.4%)
Other, NH	0	<10	<10	0	<10
Unknown	0	0	0	0	0

<sup>1</sup>Includes all Fulton County cities north of Atlanta (Alpharetta, Johns Creek, Milton, Mountain Park, Roswell, Sandy Springs) <sup>2</sup>Includes all cities south of Atlanta (College Park, Chattahoochee Hills, East Point, Fairburn, Hapeville, Palmetto, South Fulton, Union City). **Note:** All data reported are preliminary and subject to change. This table includes data on all confirmed COVID-19 deaths and is subject to change as GA DPH completes cause of death confirmation processes.

**COVID-19 CASE TRENDS IN FULTON AND SURROUNDING DISTRICTS**

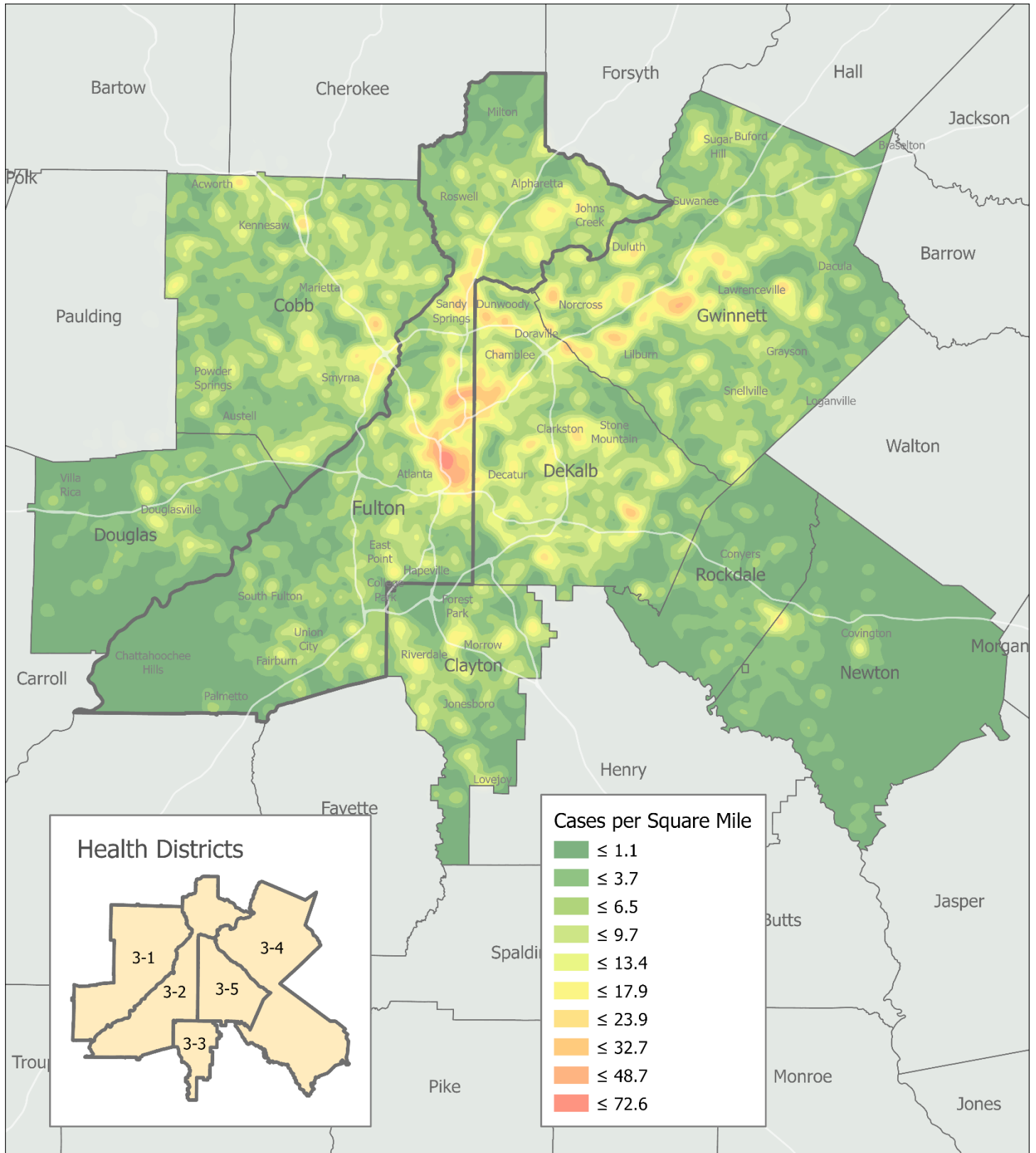
**Fig. 9. Daily Case Counts for Atlanta Metro Districts  
(Averaged over 7 days)**



\*Graph shows the average number of cases calculated from the daily cumulative case counts in the metro Atlanta districts. Increases in daily cumulative case counts may include cases diagnosed earlier during the pandemic but were only recently reported to the state as cases diagnosed belonging to these districts.

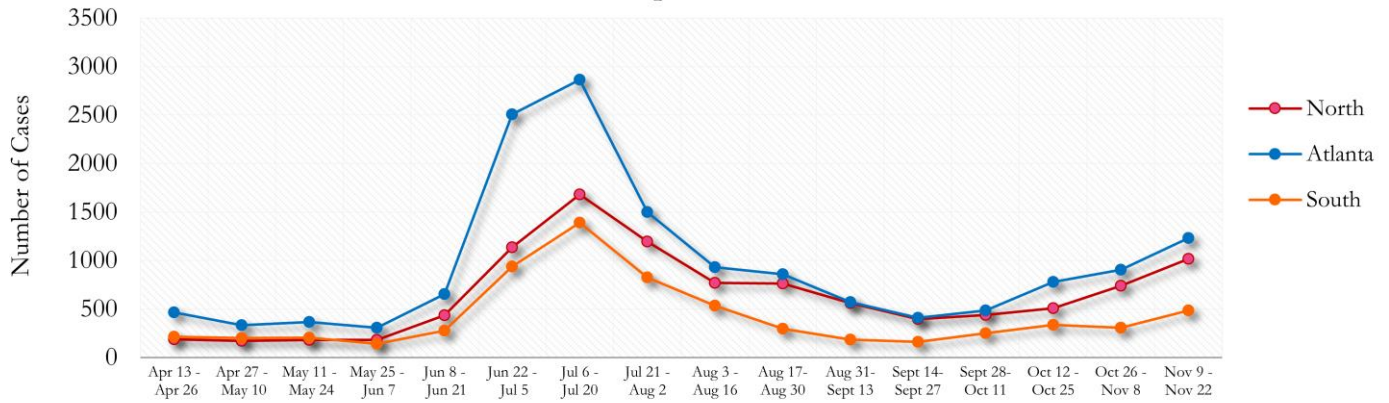


Fig. 10. COVID-19 Cases in Fulton County and Surrounding Districts (Nov 4 – Nov 17, 2020)



## TRENDS IN COVID-19 CASES AMONG DEMOGRAPHIC GROUPS (14 DAY PERIODS)

**Fig. 11. Trends in Geographic distribution of COVID-19 Cases in Fulton County by 14-day periods**

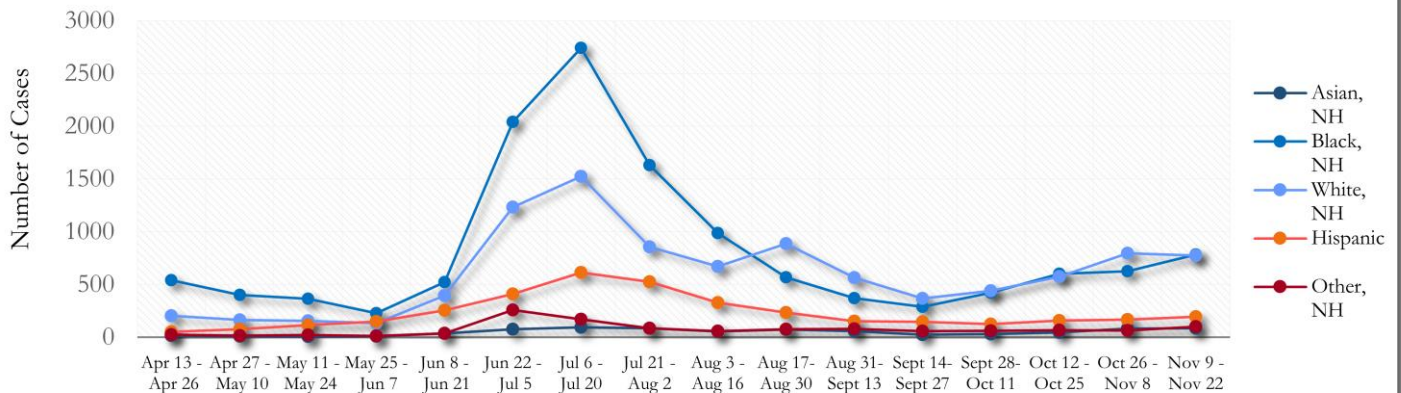


In the past two weeks, the city of Atlanta accounted for the majority of new cases.

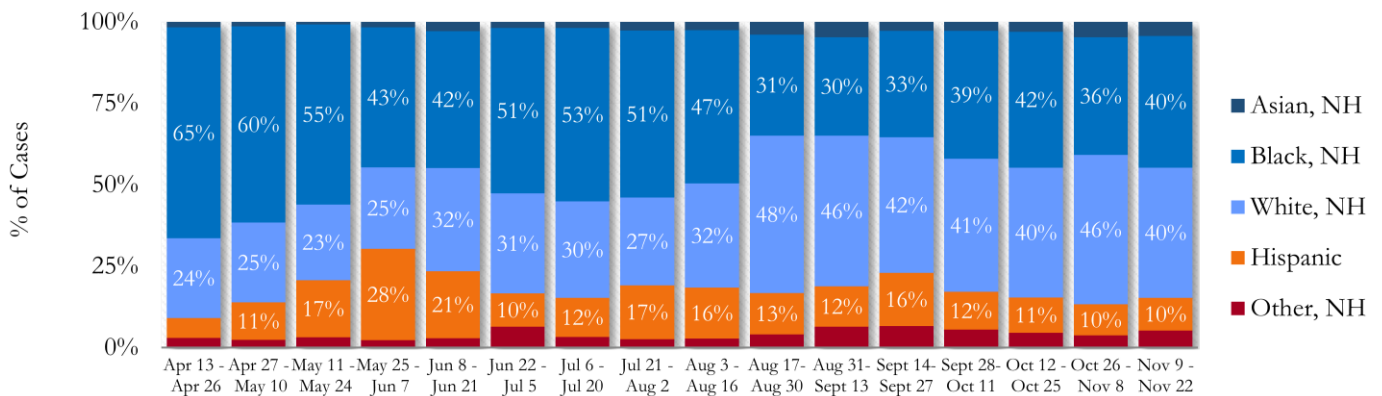
\*North - Includes all Fulton cities north of Atlanta (Alpharetta, Johns Creek, Milton, Mountain Park, Roswell, Sandy Springs)

\*South - Includes all Fulton cities south of Atlanta (College Park, Chattahoochee Hills, East Point, Fairburn, Hapeville, Palmetto, South Fulton, and Union City)

**Fig. 12. Trends in Racial Distribution of COVID-19 Cases in Fulton County by 14-day periods**

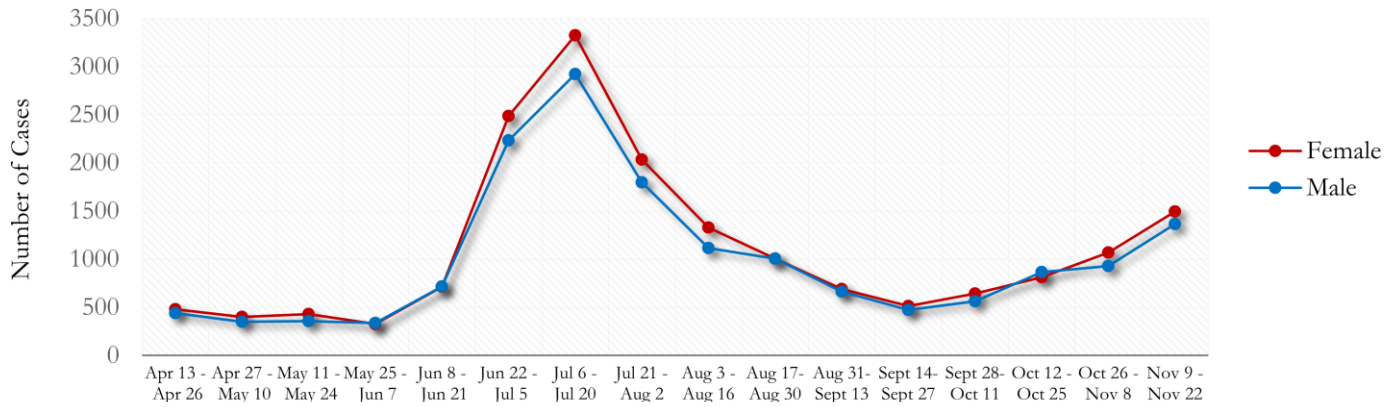


**Fig. 13. Racial Distribution of COVID-19 Cases in Fulton County by 14-day periods**

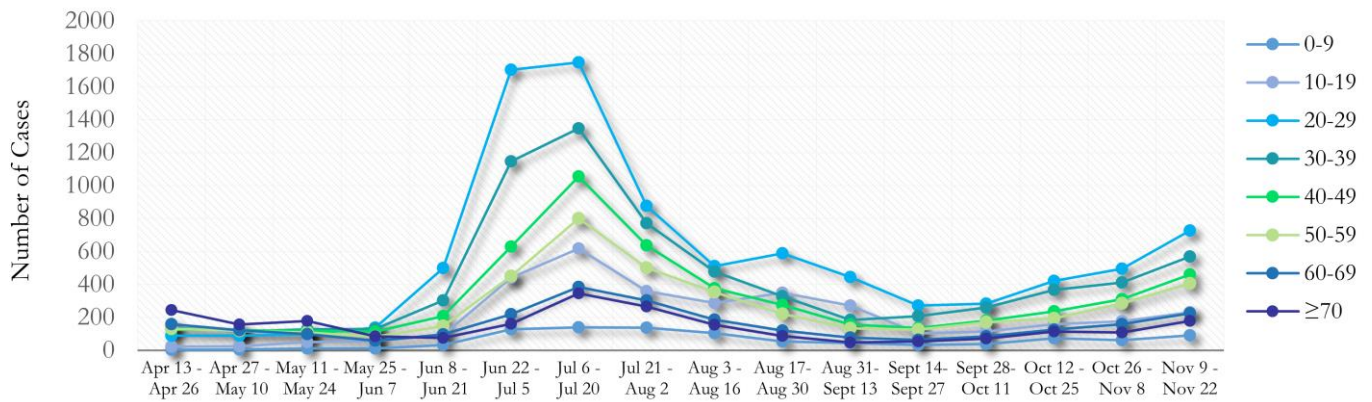


About 17% of COVID cases are missing data on patient race and ethnicity. The majority of new cases in the past two weeks were White, NH (40%) and Black, NH (40%).

**Fig. 14. Trends in Gender Distribution of COVID-19 Cases in Fulton County by 14-day periods**

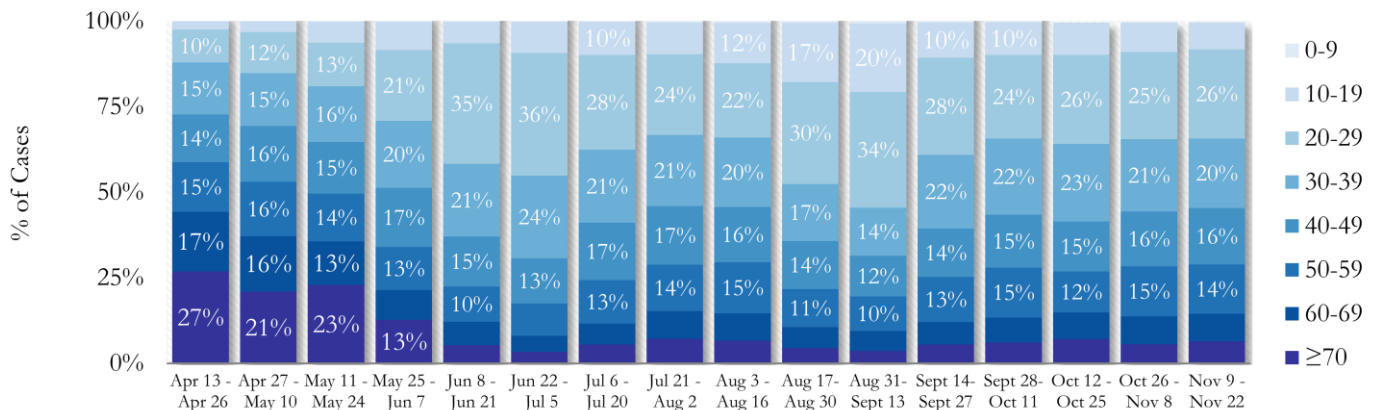


**Fig. 15. Trends in Age Distribution of COVID-19 Cases in Fulton County by 14-day periods**



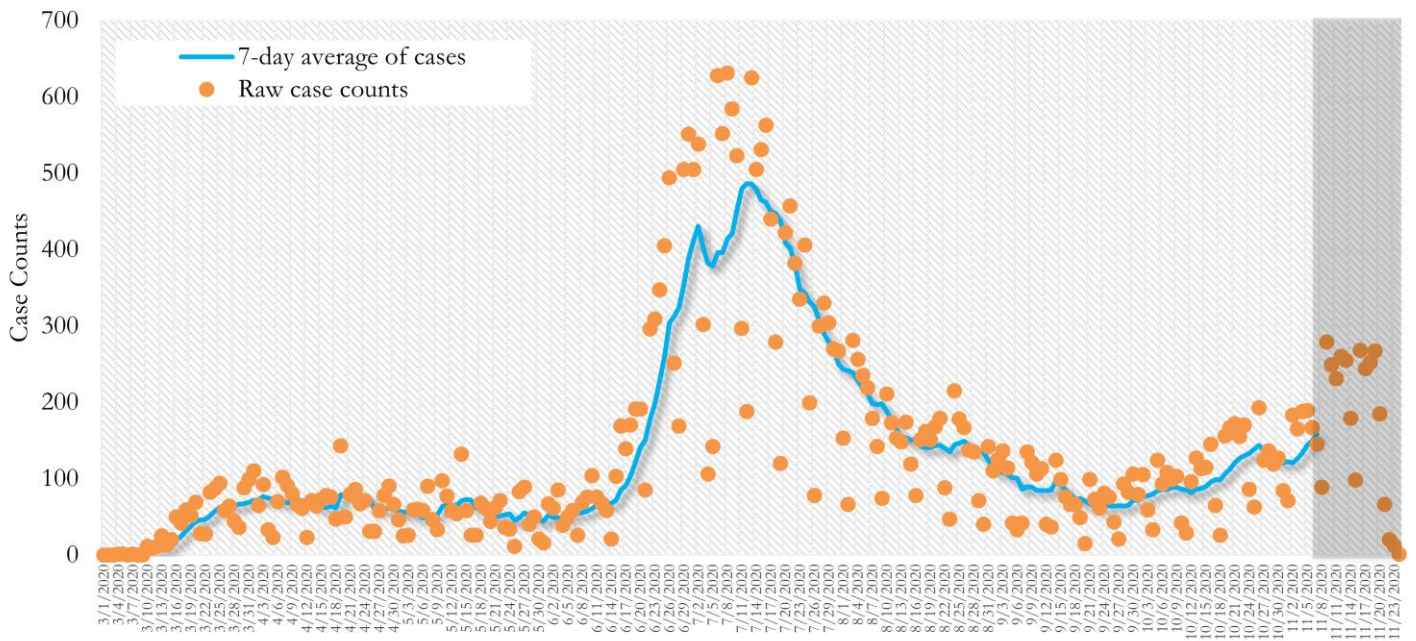
Earlier (March-May 2020) large proportions of reported cases were among persons aged 60 and older. In the most recent two weeks, 20-29 year olds accounted for the highest number of new cases among all age groups, followed by 30-39 year olds.

**Fig. 16. Age Distribution of COVID-19 Cases in Fulton County by 14-day periods**



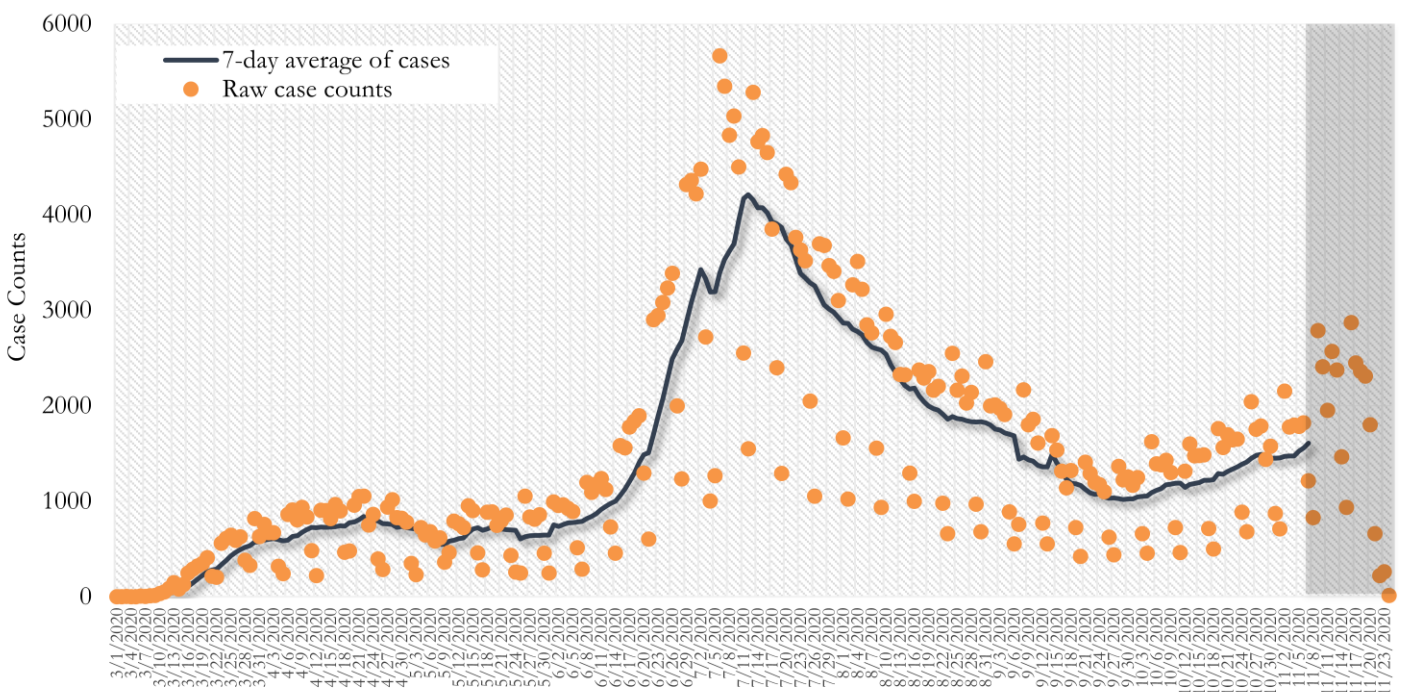
**TRENDS IN COVID-19 CASES, HOSPITALIZATIONS AND DEATHS (7-DAY MOVING AVE.)**

**Fig. 17. New COVID-19 Cases in Fulton County Daily (Averaged over 7 days)**



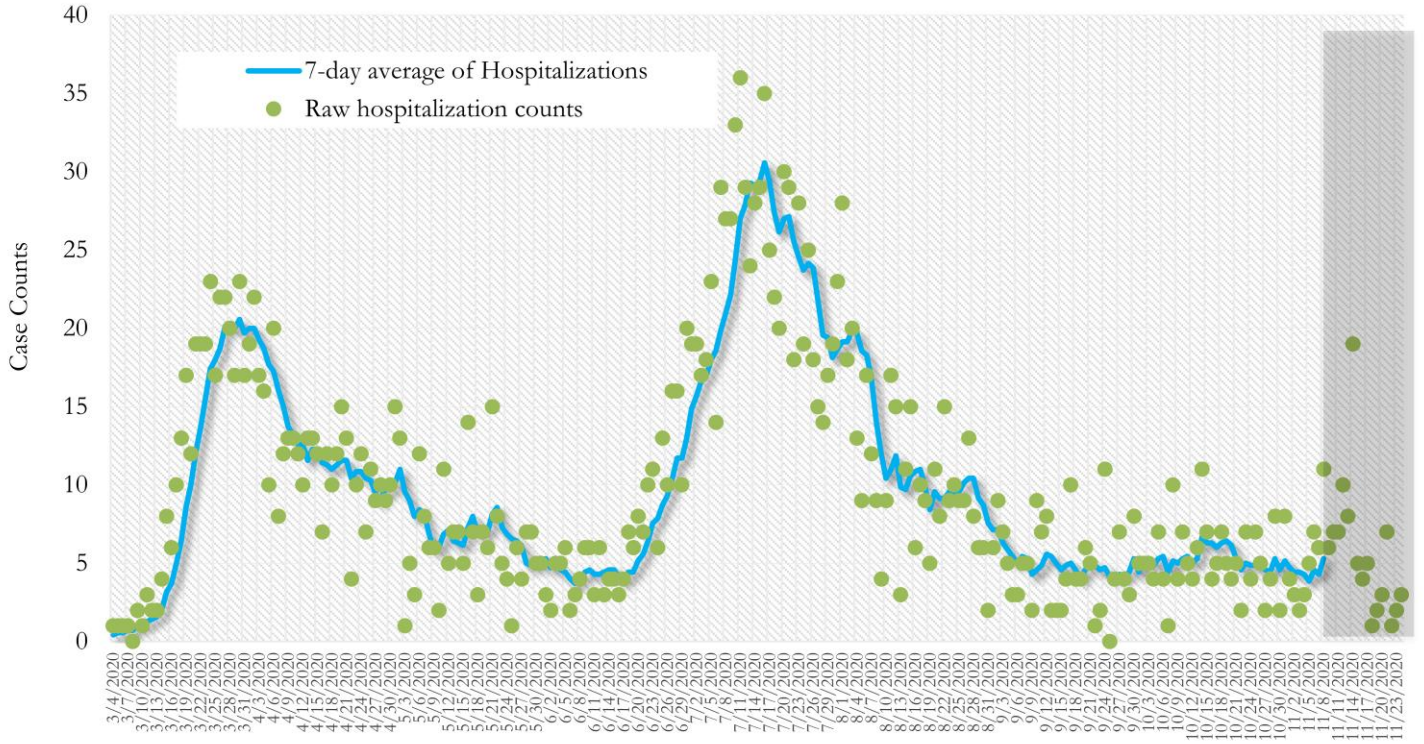
\*Date of collection of first positive sample used (report creation date used where sample collection date is missing). Graph above reflects the trend in COVID-19 diagnosis. Due to the high volume of testing in recent weeks, there have been delays in reporting lab results. Thus, the trend is subject to change as more lab results get added to the state surveillance database.

**Fig. 18. New COVID-19 Cases in Georgia State Daily (Averaged over 7 days)**



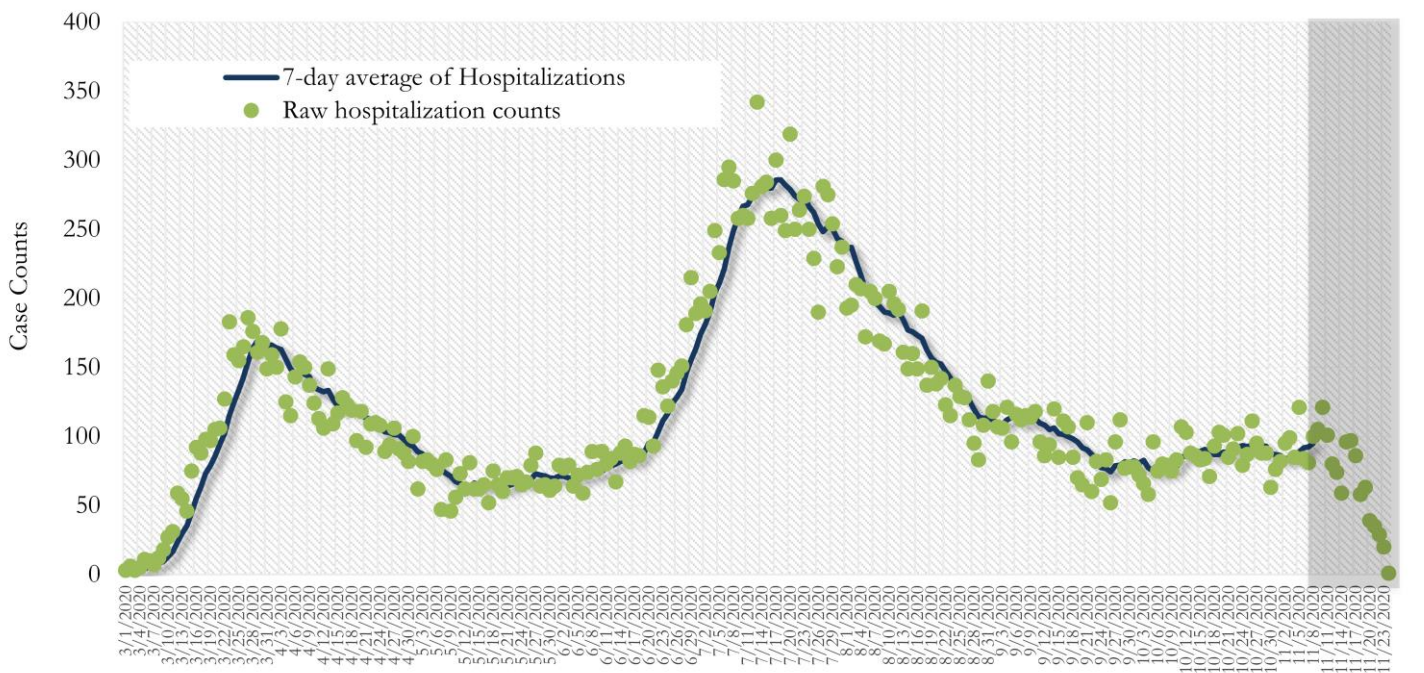
\*Date of collection of first positive sample used (report creation date used where sample collection date is missing). Graph above reflects the trend in COVID-19 diagnosis. Due to the high volume of testing in recent weeks, there have been delays in reporting lab results. Thus, the trend is subject to change as more lab results get added to the state surveillance database.

**Fig. 19. COVID-19 Hospitalizations in Fulton County Daily (Averaged over 7 days)**



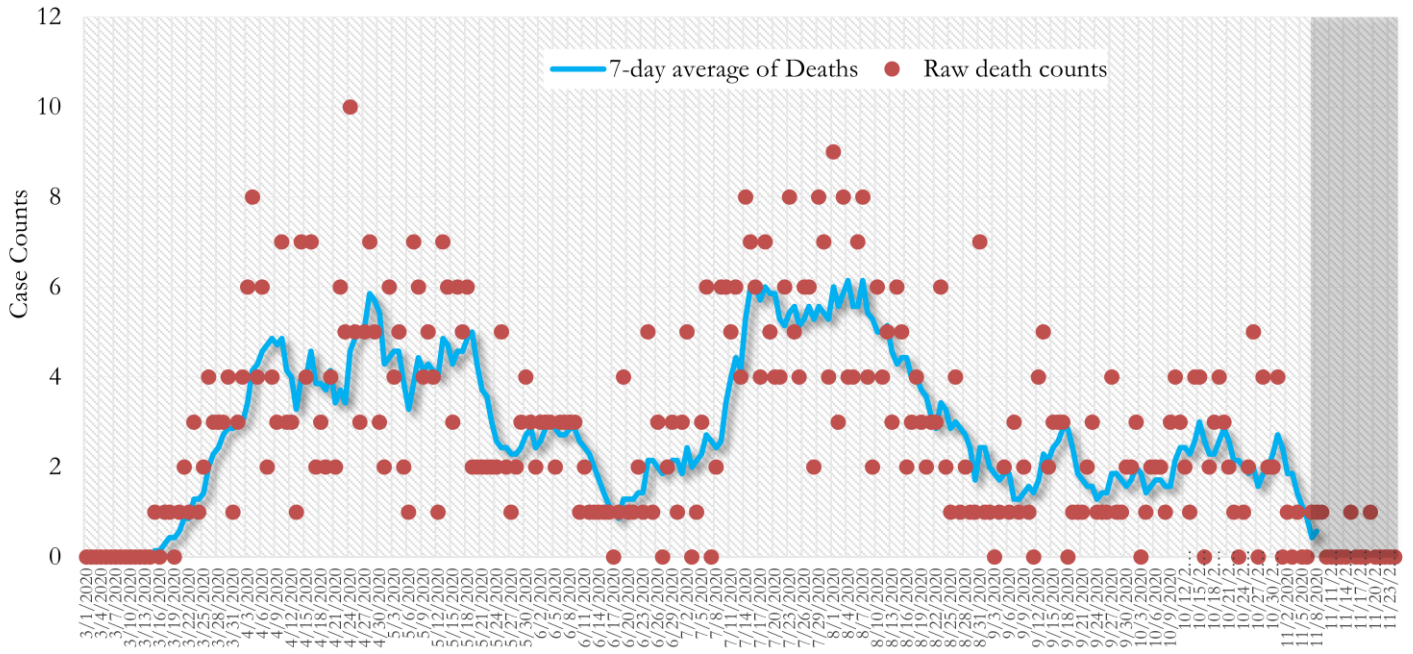
\*Reported date of hospital admission used. Graph above reflects the trend in COVID-19 hospitalizations. Due to the high volume of new cases being added daily, there have been delays in reporting hospitalization data. Thus, the trend is likely to change as more hospitalization data is reported in the state surveillance database.

**Fig. 20. COVID-19 Hospitalizations in Georgia State Daily (Averaged over 7 days)**



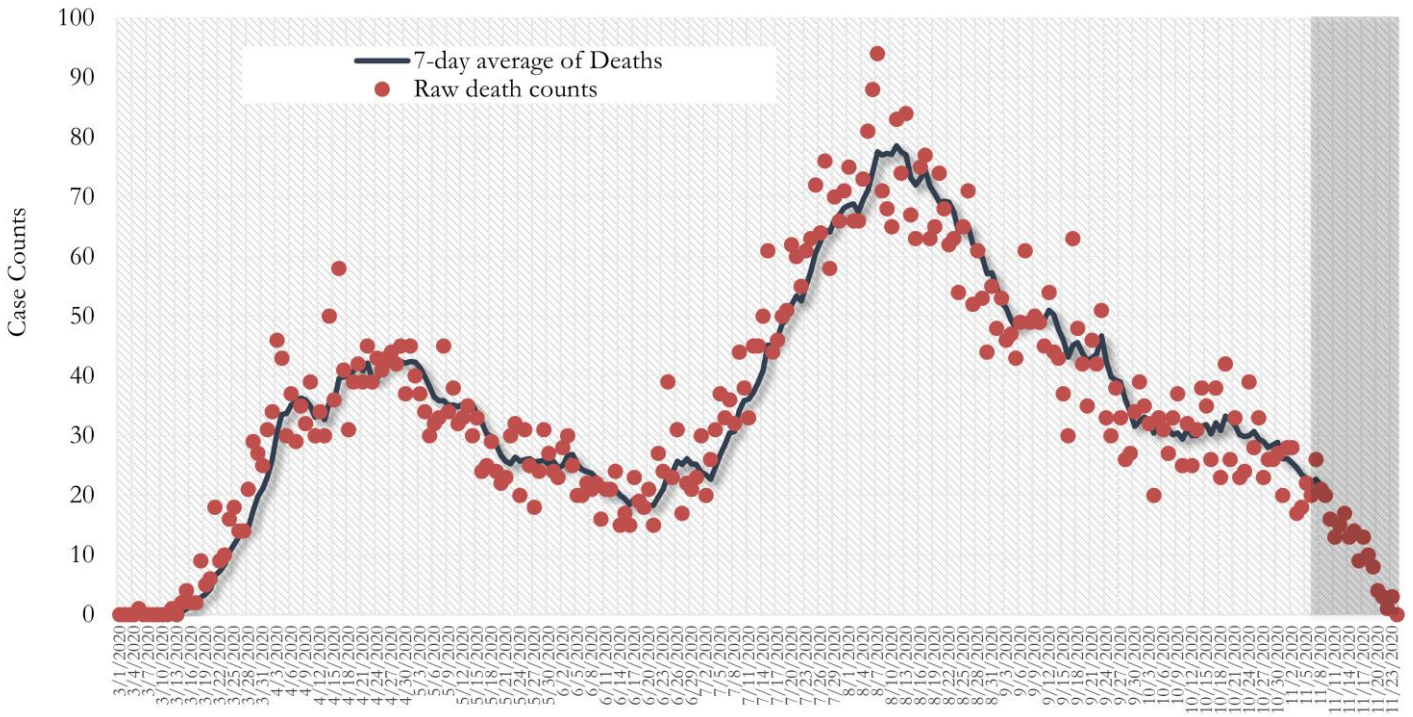
\*Reported date of hospital admission used. Graph above reflects the trend in COVID-19 hospitalizations. Due to the high volume of new cases being added daily, there have been delays in reporting hospitalization data. Thus, the trend is likely to change as more hospitalization data is reported in the state surveillance database.

**Fig. 21. COVID-19 Deaths in Fulton County Daily (Averaged over 7 days)**



\* Reported date of death used. Graph above reflects the trend in deaths attributed to COVID-19. The trend is likely to change as more data on deaths among persons with COVID-19 is reported in the state surveillance database.

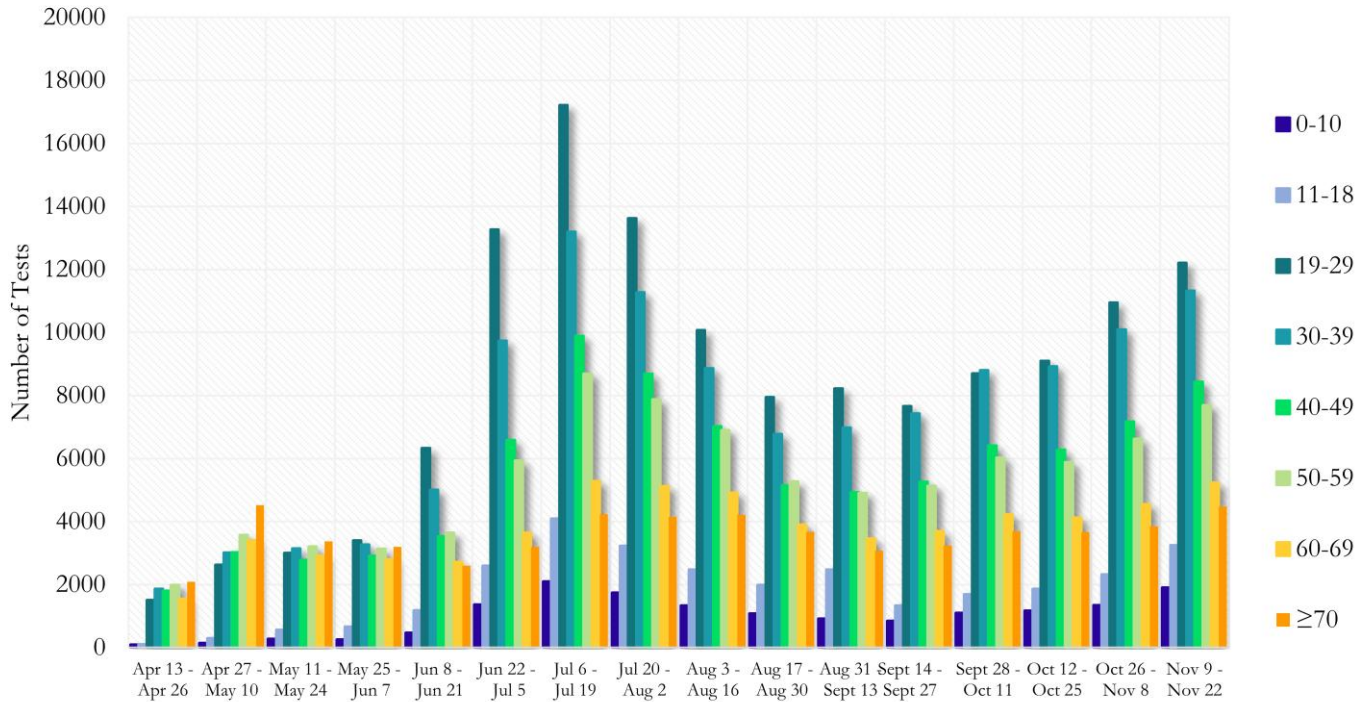
**Fig. 22. COVID-19 Deaths in Georgia State Daily (Averaged over 7 days)**



\* Reported date of death used. Graph above reflects the trend in deaths attributed to COVID-19. The trend is likely to change as more data on deaths among persons with COVID-19 is reported in the state surveillance database.

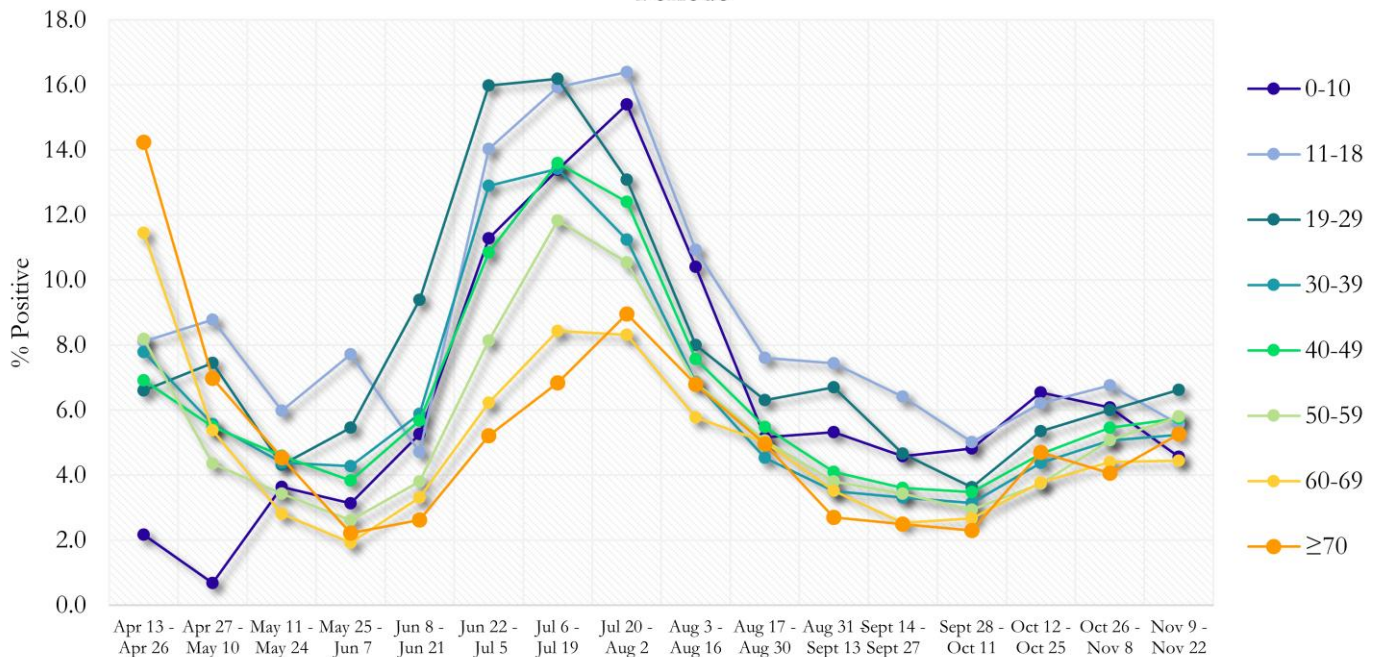
**COVID-19 TESTING AND POSITIVITY IN FULTON COUNTY BY AGE AND RACE**

**Fig. 23. COVID-19 Tests by Age in Fulton County by 14-day Periods**



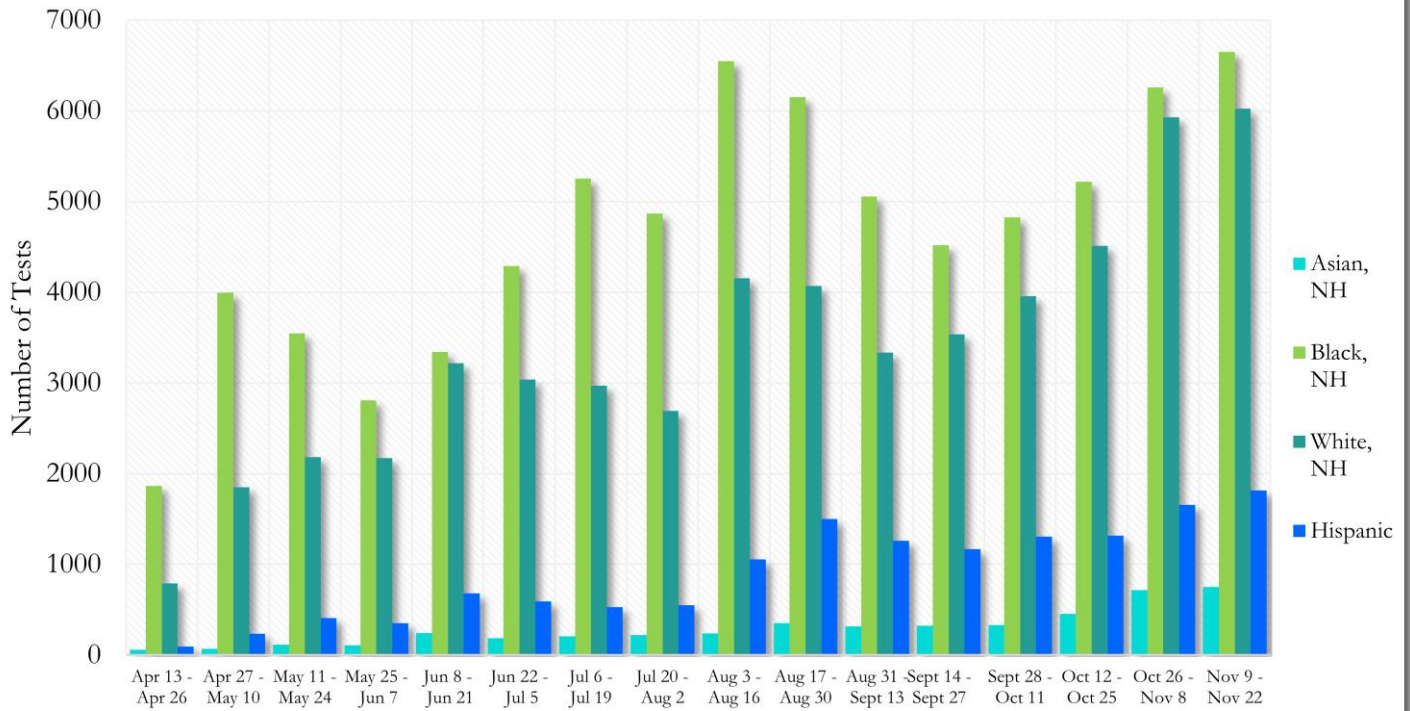
\*Data on Polymerase Chain Reaction (PCR) tests only included.

**Fig. 24. Percent Positive COVID-19 Tests by Age Group in Fulton County by 14-day Periods**



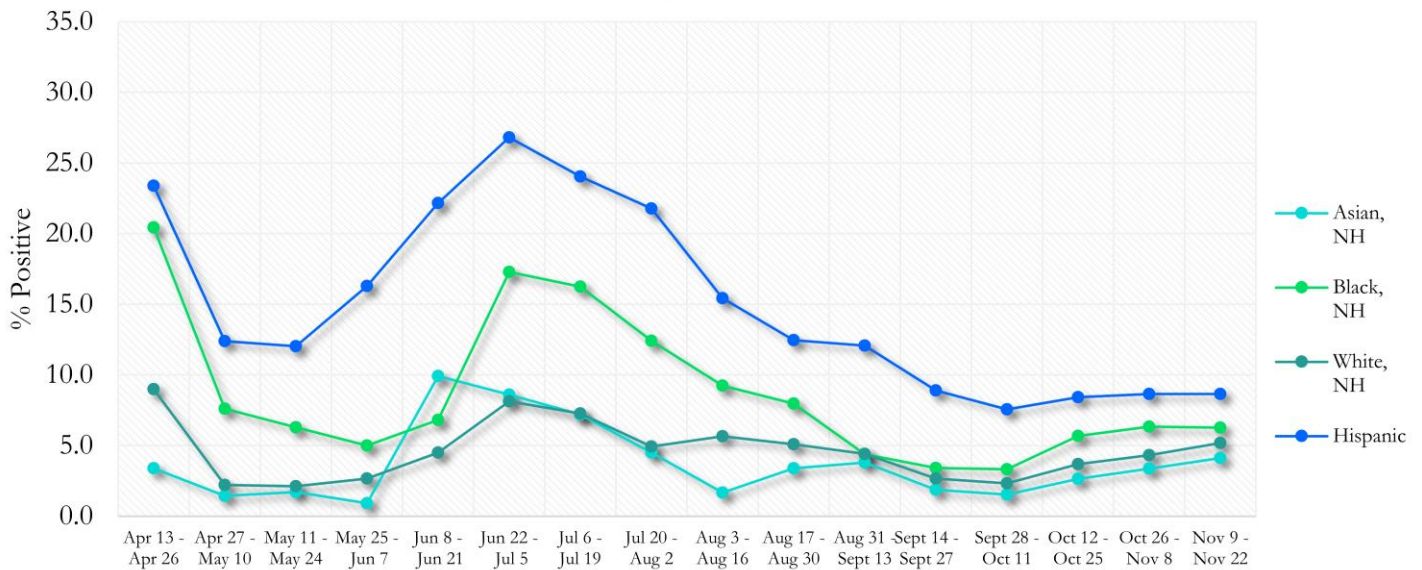
\*Data on Polymerase Chain Reaction (PCR) tests only included.

**Fig. 25. COVID-19 Tests by Race and Ethnicity in Fulton County by 14-day Periods**



\*Data on Polymerase Chain Reaction (PCR) tests only included.

**Fig. 26. Percent Positive COVID-19 Tests by Race and Ethnicity in Fulton County by 14-day Periods**



\*Data on Polymerase Chain Reaction (PCR) tests only included.



## COVID-19 CASE COUNTS BY ZIP CODE

	Prior (11/20/20)	Current Total (11/24/20)		New Cases (Period: 10/21/20 – 11/17/20) <sup>1</sup>		
	Count	Count	%	Recent 14 d. (Nov 4– Nov 17)	Prior 14 d. (Oct 21– Nov 3)	% change <sup>2</sup>
<b>All Fulton</b>	35149	36293	100%	3059	1886	↑ 62.2%
30004	1230	1287	3.55%	135	89	↑ 51.7%
30005	686	730	2.01%	74	53	↑ 39.6%
30009	597	623	1.72%	64	31	↑ 106.5%
30022	1613	1684	0.99%	209	95	↑ 120.0%
30023	<10	<10	<0.1%	0	0	-
30024	21	21	<0.1%	<10	<10	-
30075	1390	1439	3.96%	139	73	↑ 90.4%
30076	1359	1403	3.87%	99	60	↑ 65.0%
30080	<10	<10	<0.1%	0	<10	↓ 100.0%
30097	378	395	1.09%	57	40	↑ 42.5%
30098	-	-	-	0	0	-
30135	<10	<10	<0.1%	0	0	-
30138	<10	<10	<0.1%	0	0	-
30139	-	-	-	0	0	-
30213	1346	1393	3.84%	106	63	↑ 68.3%
30268	223	231	0.64%	13	<10	↑ 62.5%
30291	937	967	2.66%	60	41	↑ 46.3%
30296	81	83	0.23%	12	<10	↑ 50.0%
30301	12	13	<0.1%	<10	<10	-
30303	441	446	1.23%	20	25	↓ 20.0%
30305	1045	1104	3.04%	104	87	↑ 19.5%
30306	458	481	1.33%	60	29	↑ 106.9%
30307	240	245	0.68%	15	16	↓ 6.3%
30308	766	797	2.20%	76	64	↑ 18.8%
30309	1104	1159	3.19%	117	80	↑ 46.3%
30310	901	921	2.54%	55	41	↑ 34.1%
30311	953	970	2.67%	66	42	↑ 57.1%
30312	1012	1048	2.89%	96	48	↑ 100.0%
30313	355	359	0.99%	26	<10	↑ 225.0%
30314	650	664	1.83%	27	21	↑ 28.6%
30315	1086	1113	3.07%	92	46	↑ 100.0%
30316	462	470	1.30%	32	23	↑ 39.1%
30318	2144	2197	6.05%	174	99	↑ 75.8%
30319	192	199	0.55%	16	<10	↑ 77.8%
30321	12	11	<0.1%	<10	0	-
30324	1135	1184	3.26%	107	55	↑ 94.5%
30326	348	364	1.00%	44	35	↑ 25.7%
30327	798	829	2.28%	97	73	↑ 32.9%
30328	1136	1176	3.24%	142	92	↑ 54.3%
30331	2038	2082	5.74%	98	75	↑ 30.7%
30334	13	13	<0.1%	0	0	-
30336	103	104	0.29%	10	<10	↑ 900.0%
30337	420	429	1.18%	28	16	↑ 75.0%
30338	97	103	0.28%	<10	<10	-
30339	266	267	0.74%	12	<10	↑ 500.0%
30340	32	34	<0.1%	<10	0	-
30341	32	32	<0.1%	<10	0	-
30342	1477	1514	4.17%	109	94	↑ 16.0%
30344	1093	1119	3.08%	83	34	↑ 144.1%
30345	24	24	<0.1%	0	0	-

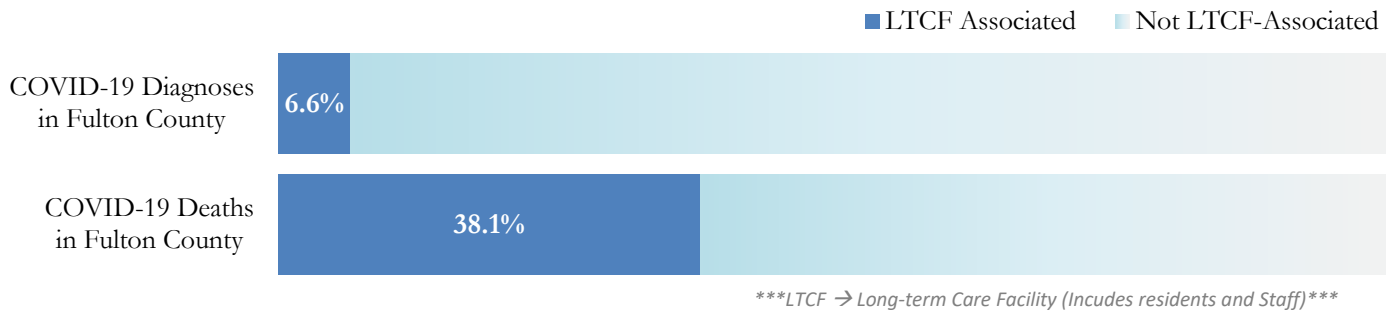
30349	2190	2245	6.19%	155	91	↑ 70.3%
30350	847	889	2.45%	115	39	↑ 194.9%
30354	523	539	1.49%	37	25	↑ 48.0%
30358	<10	<10	<0.1%	0	0	-
30363	90	98	0.27%	11	<10	↑ 175.0%
30374	32	32	<0.1%	<10	0	-
30606	<10	<10	<0.1%	0	0	-
31131	<10	<10	<0.1%	0	<10	↓ 100.0%
31150	<10	<10	<0.1%	0	0	-
Unknown	1878	735	2.03%	40	40	-

<sup>1</sup>**New cases:** Cases diagnosed in most recent 28 days (based on reported dates of positive sample collection). To allow for lag in reporting results of new diagnoses from samples collected in the most recent week, data used for incident diagnoses analyses were moved back by one week. <sup>2</sup>**Percent change:** These reflect the percentage increase or decrease of new diagnoses between the 14 days preceding the past 7 days and the 14 days preceding that. Changes in ZIP codes with less than 10 cases in both 2 week intervals are not reported\*\*Data cleaning (either during case interviews or address geo-coding) may lead to reassignment of few cases from one territory to another based on their corrected addresses. These may appear as “decreases” when compared to the previous day’s count. These do not reflect errors in the data collection or analysis process but only reflect the minor day-to-day fluctuations in case counts that arise in an evolving public health database like COVID’s. **Note:** Sharp increases in territorial COVID case counts often reflect new cases diagnosed at long term care facilities located in those territories during facility-wide /mass screening events **All data reported are preliminary and subject to change.**

## COVID-19 IN LONG-TERM CARE FACILITIES IN FULTON COUNTY

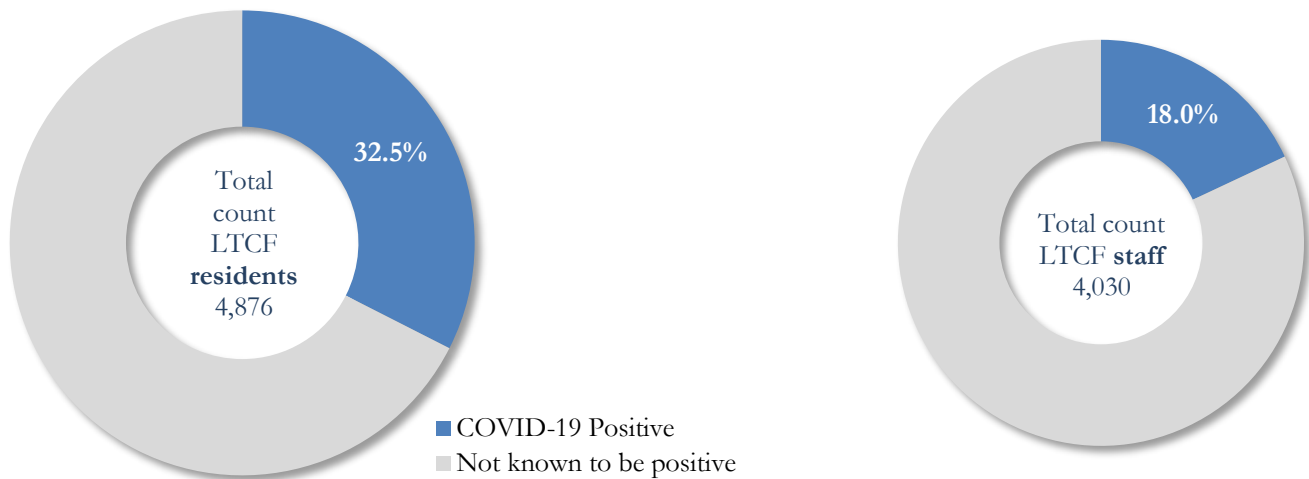
Older persons (aged 65 years and older) and persons who live in nursing homes or other long-term care facilities seem to be at higher risk for developing more serious complications from COVID-19. Extra precautions are recommended for individuals within this risk groups – Centers for Disease Control and Prevention (CDC 2020) <https://www.cdc.gov/coronavirus/2019-ncov/need-extra-precautions/people-at-higher-risk.html>

Fig. 27. COVID-19 Diagnoses and Deaths in Fulton County Associated with Long-Term Care Facilities



## COVID-19 POSITIVITY:

Fig. 28. COVID-19 Positivity at 64 reporting Long-Term Care Facilities (LTCF) in Fulton County



COVID-19 Cases, Hospitalizations, and Deaths among 64 reporting Long-Term Care Facilities in Fulton County

	LTCF Residents (n=4,876)			LTCF Staff (n=4,030)		
	Cases	Hospitalizations	Deaths	Cases	Hospitalizations	Deaths
Average (count per fac.) <sup>1</sup>	25	5	4	11	1	<0.1
Median (count per fac.) <sup>1</sup>	10	2	1	9	0	0
Lowest counts	0	0	0	0	0	0
Highest counts	139	48	30	67	8	2
Total Count	1585 (32.5%) <sup>a</sup>	318 (20.1%) <sup>b</sup>	244 (15.4%) <sup>b</sup>	728 (18.0%) <sup>a</sup>	32 (4.4%) <sup>b</sup>	5 (<1.0%) <sup>b</sup>

<sup>a</sup> Percentage shown reflects proportion of total residents/staff tested who were positive (i.e. COVID-19 Positivity). | <sup>b</sup> Percentages shown are proportions of persons residents/staff diagnosed with COVID-19 who were hospitalized or died after diagnoses.