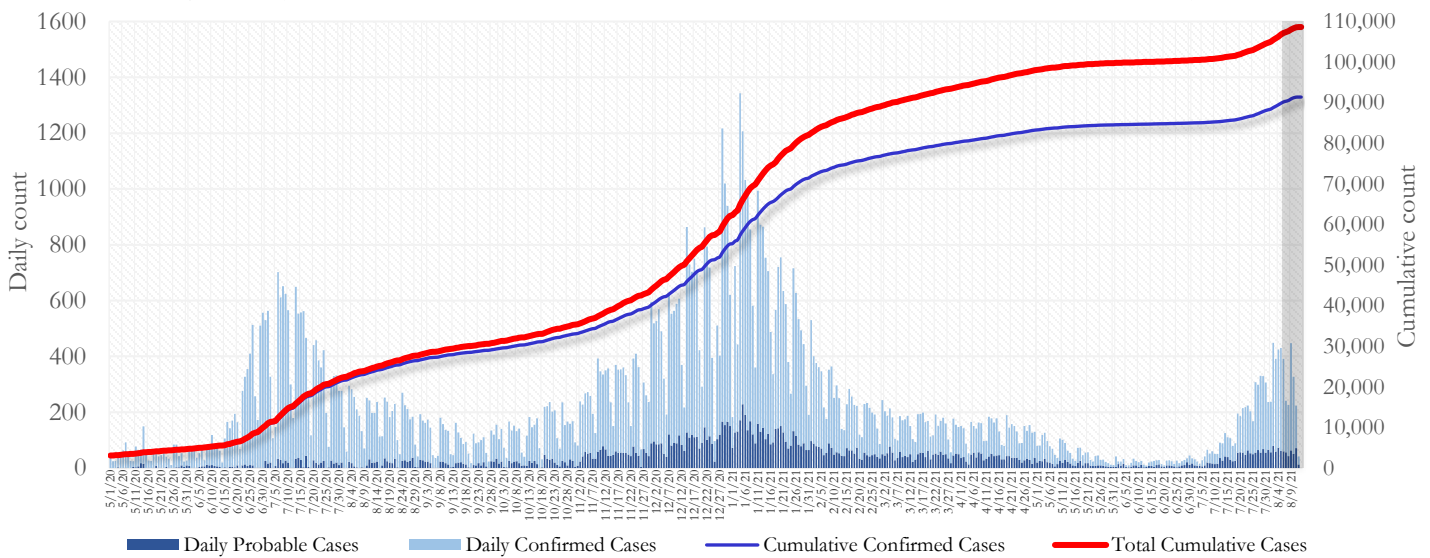


## SUMMARY

- As of August 13, 2021, Fulton County has recorded **91,387 confirmed cases** and **17,246 probable cases** of COVID-19.
- Figure 1 shows both confirmed and probable case counts but the ensuing tables and figures use data from **confirmed cases only**.
- As of August 13, 2021, Fulton County has recorded **1,389 confirmed COVID-19 deaths**. 147 deaths are currently under review by GA DPH to confirm cause of death.
- By city, new confirmed COVID-19 case rates range from 160.0 per 100,000 persons (Mountain Park) to 777.7 per 100,000 persons (Palmetto). [**Fulton County Diagnoses Rates (per 100,000 persons): Cumulative – 8314.1; Incidence – 346.5**]. See map showing incident case rate by ZIP code on Pg.7.
- Of all PCR testing done in Fulton County between July 19 and August 1, the **percent positivity rate was 10.0%**.

**Fig 1. Daily and Cumulative Confirmed and Probable COVID-19 cases in Fulton County, GA**



Counts shown reflect the number of cases as of 9:00 am on 8/13/21 using the date of first positive sample collection. Where date of sample collection was not available or missing, the date of report creation in GA SendSS was used instead. The Georgia Department of Health defines a confirmed cases as someone with a positive molecular test, also known as PCR. A probable case is defined as a positive antigen test, though probable cases are still considered positive cases and individuals who tested positive through an antigen test should follow all DPH isolation and quarantine guidance. **Note:** Delays in data reporting may cause changes in data counts, particularly in the shaded portion. Data throughout this report are preliminary and subject to ongoing data cleaning processes, and thus are subject to change.

**THE FOLLOWING ANALYSES (PAGES 1-19) ARE USING DATA ON CONFIRMED CASES ONLY.**

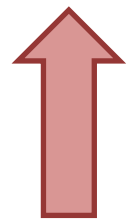
## DISTRIBUTION OF COVID-19 CASES BY REGION

**New cases:** 44% of the new COVID-19 cases in the past 2 weeks occurred in Atlanta while 26% and 27% occurred in the Northern and Southern regions of the county respectively.

Fulton Region	% Cumulative count	% New cases*
Atlanta	43.0%	44.0%
North <sup>1</sup>	33.0%	25.6%
South <sup>2</sup>	20.7%	27.0%
Unincorporated/Unknown	3.3%	3.3%

<sup>1</sup>Includes all Fulton County cities north of Atlanta (Alpharetta, Johns Creek, Milton, Mountain Park, Roswell, Sandy Springs.) <sup>2</sup>Includes all cities south of Atlanta (Chattahoochee Hills, College Park, East Point, Fairburn, Hapeville, Palmetto, South Fulton, and Union City) \***New cases:** Cases diagnosed in the past 2 weeks only (between 7/24/21 – 8/6/21).

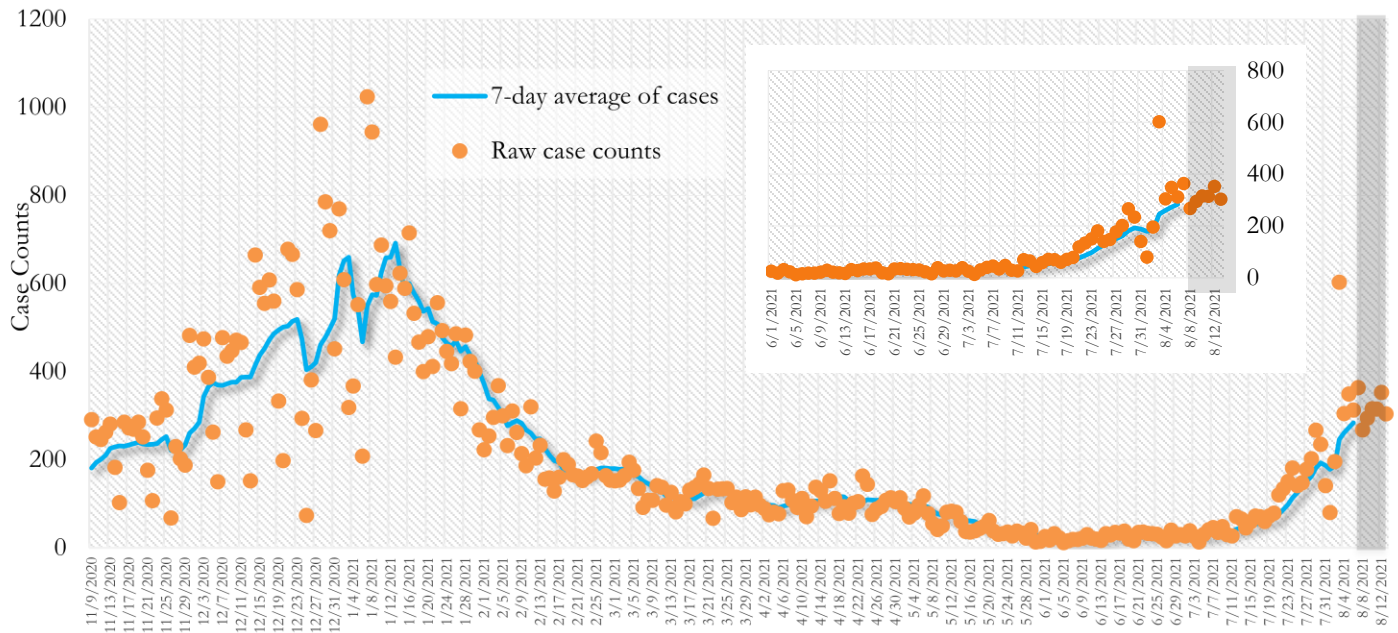
**In the recent two week reporting period (7/24-8/6), there were more new cases of COVID-19 in Fulton County than the previous two weeks (7/10-7/23).**



*\*Delayed a week to account for testing results turnaround time.*

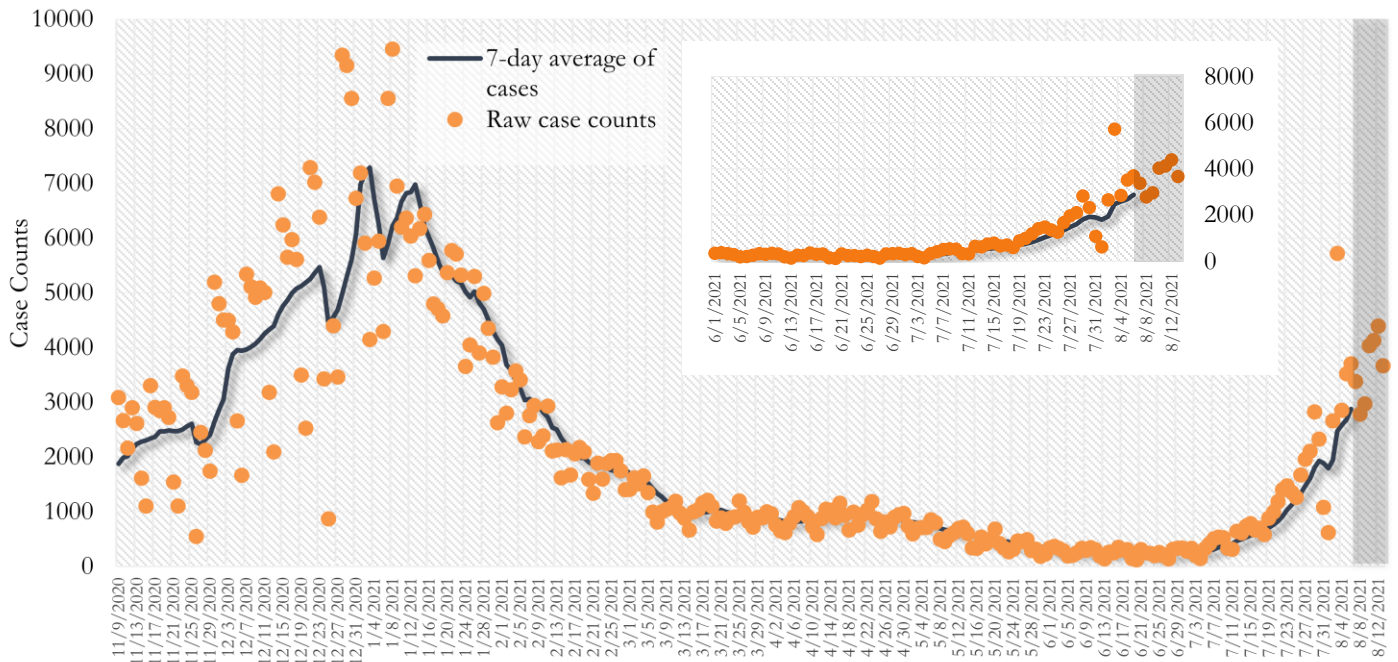
**TRENDS IN COVID-19 CASES, HOSPITALIZATIONS AND DEATHS (7-DAY MOVING AVE.)**

**Fig. 2. New COVID-19 Cases in Fulton County Daily (Averaged over 7 days)**



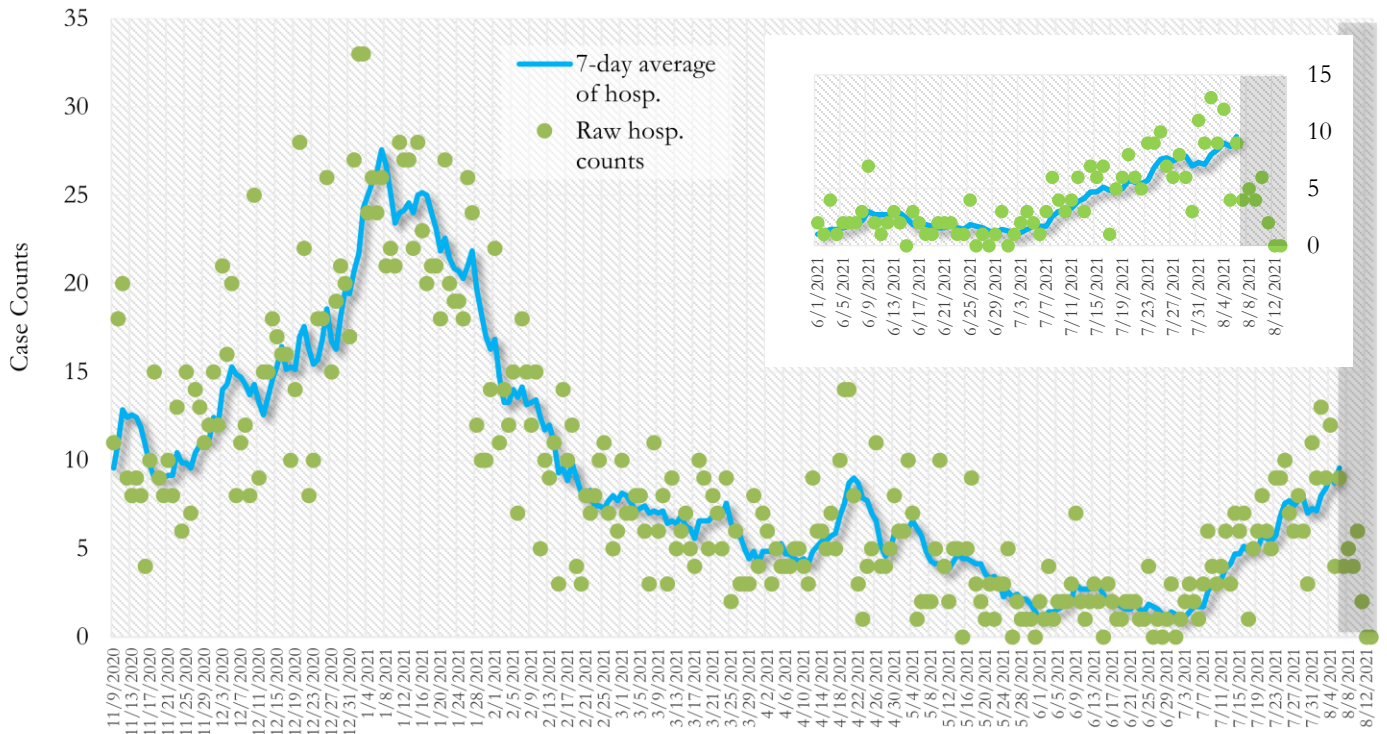
\*Date of collection of first positive sample used (report creation date used where sample collection date is missing). Graph above reflects the trend in COVID-19 diagnosis. Due to the high volume of testing in recent weeks, there have been delays in reporting lab results. Thus, the trend is subject to change as more lab results get added to the state surveillance database.

**Fig. 3. New COVID-19 Cases in Georgia State Daily (Averaged over 7 days)**



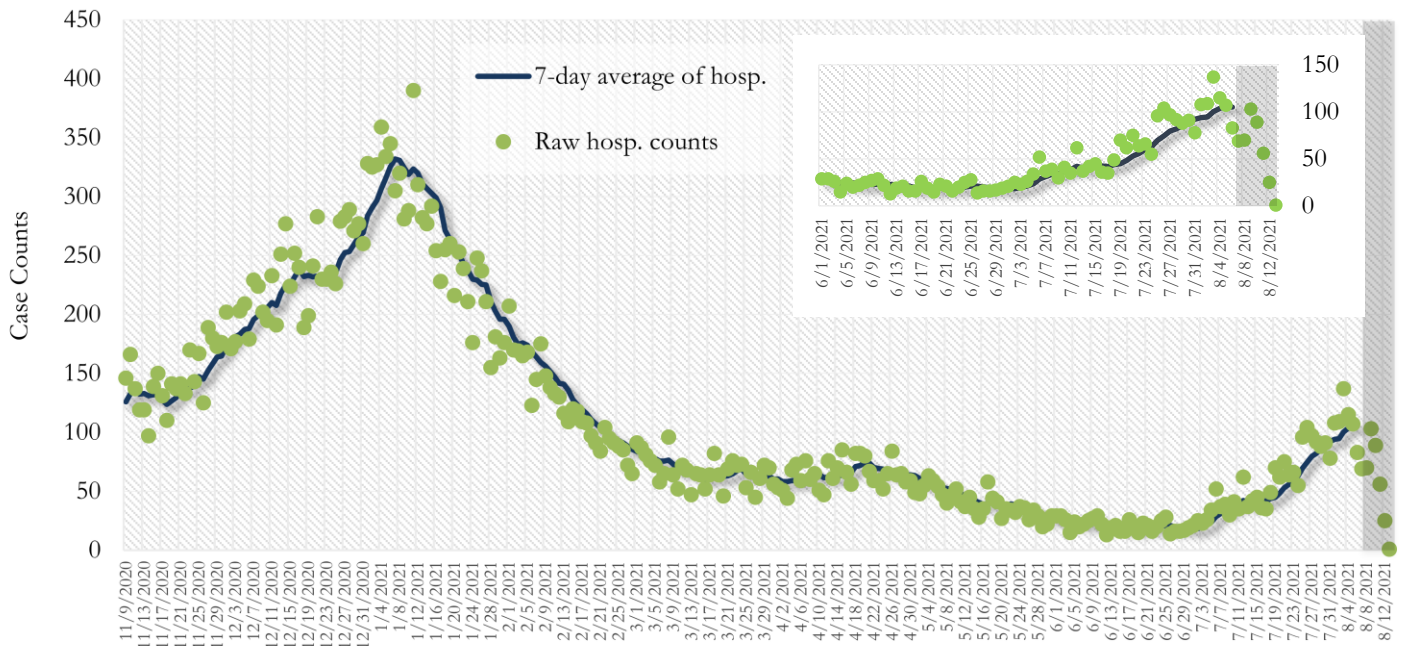
\*Date of collection of first positive sample used (report creation date used where sample collection date is missing). Graph above reflects the trend in COVID-19 diagnosis. Due to the high volume of testing in recent weeks, there have been delays in reporting lab results. Thus, the trend is subject to change as more lab results get added to the state surveillance database.

**Fig. 4. COVID-19 Hospitalizations in Fulton County Daily (Averaged over 7 days)**



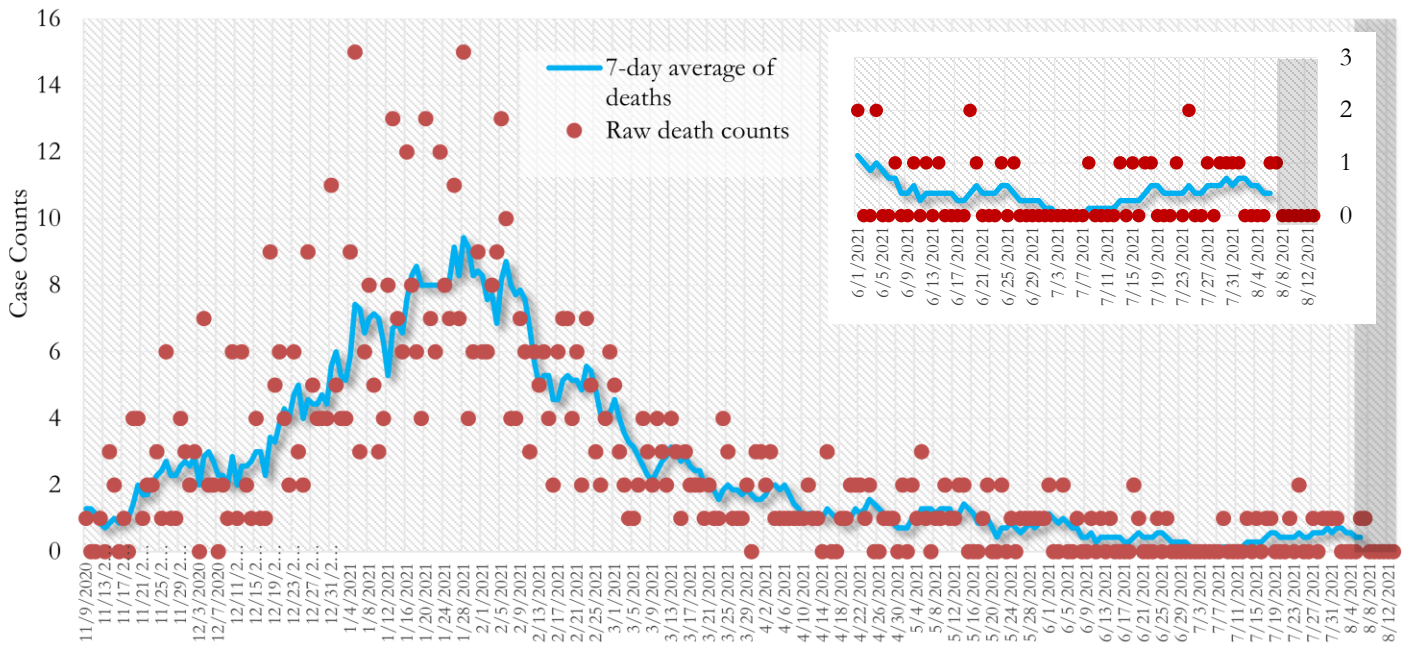
\*Reported date of hospital admission used. Graph above reflects the trend in COVID-19 hospitalizations. Due to the high volume of new cases being added daily, there have been delays in reporting hospitalization data. Thus, the trend is likely to change as more hospitalization data is reported in the state surveillance database.

**Fig. 5. COVID-19 Hospitalizations in Georgia State Daily (Averaged over 7 days)**



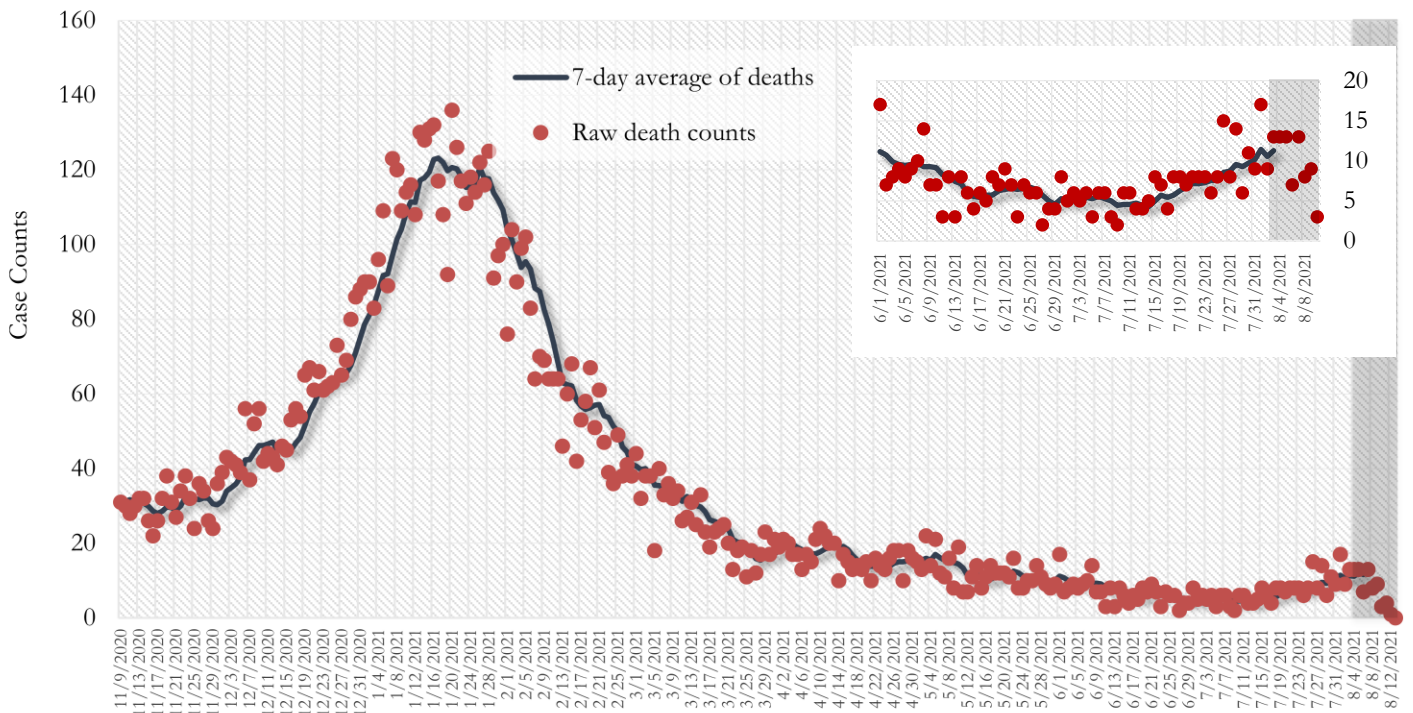
\*Reported date of hospital admission used. Graph above reflects the trend in COVID-19 hospitalizations. Due to the high volume of new cases being added daily, there have been delays in reporting hospitalization data. Thus, the trend is likely to change as more hospitalization data is reported in the state surveillance database.

**Fig. 6. COVID-19 Deaths in Fulton County Daily (Averaged over 7 days)**



\*Reported date of death used. Graph above reflects the trend in deaths attributed to COVID-19. The trend is likely to change as more data on deaths among persons with COVID-19 is reported in the state surveillance database.

**Fig. 7. COVID-19 Deaths in Georgia State Daily (Averaged over 7 days)**



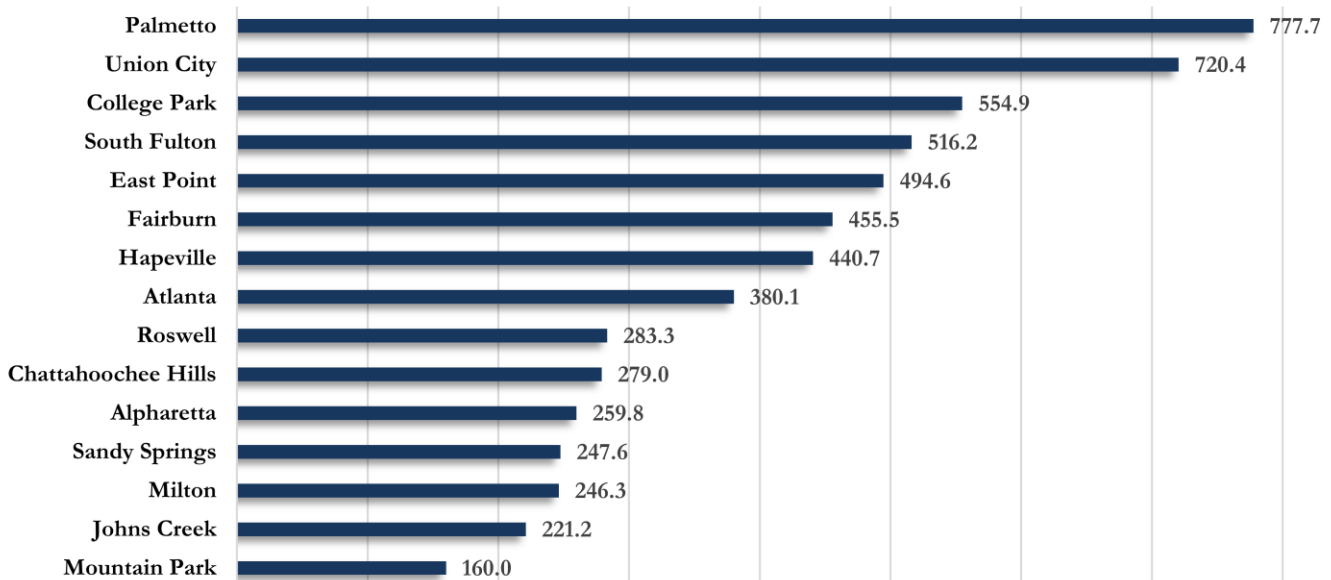
\*Reported date of death used. Graph above reflects the trend in deaths attributed to COVID-19. The trend is likely to change as more data on deaths among persons with COVID-19 is reported in the state surveillance database.

## COVID-19 CASE COUNTS AND RATES BY CITY

	Recent 14-day reporting period <sup>1</sup>	Preceding 14-day reporting period	% Change from preceding 14 days (%) <sup>2</sup>	Incidence Rate <sup>3</sup>
	7/24-8/6	7/10-7/23		
Alpharetta	168	54	↑ 211.1%	259.8
Atlanta	1677	527	↑ 218.2%	380.1
Chattahoochee Hills	<10	<10	↑ 300.0%	279.0
College Park	77	23	↑ 234.8%	554.9
East Point	173	55	↑ 214.5%	494.6
Fairburn	67	26	↑ 157.7%	455.5
Hapeville	29	11	↑ 163.6%	440.7
Johns Creek	185	44	↑ 320.5%	221.2
Milton	94	27	↑ 248.1%	246.3
Mountain Park	<10	0	-	160.0
Palmetto	34	<10	↑ 580.0%	777.7
Roswell	267	94	↑ 184.0%	283.3
Sandy Springs	261	84	↑ 210.7%	247.6
South Fulton	491	169	↑ 190.5%	516.2
Union City	151	47	↑ 221.3%	720.4
Unknown	125	15	-	-

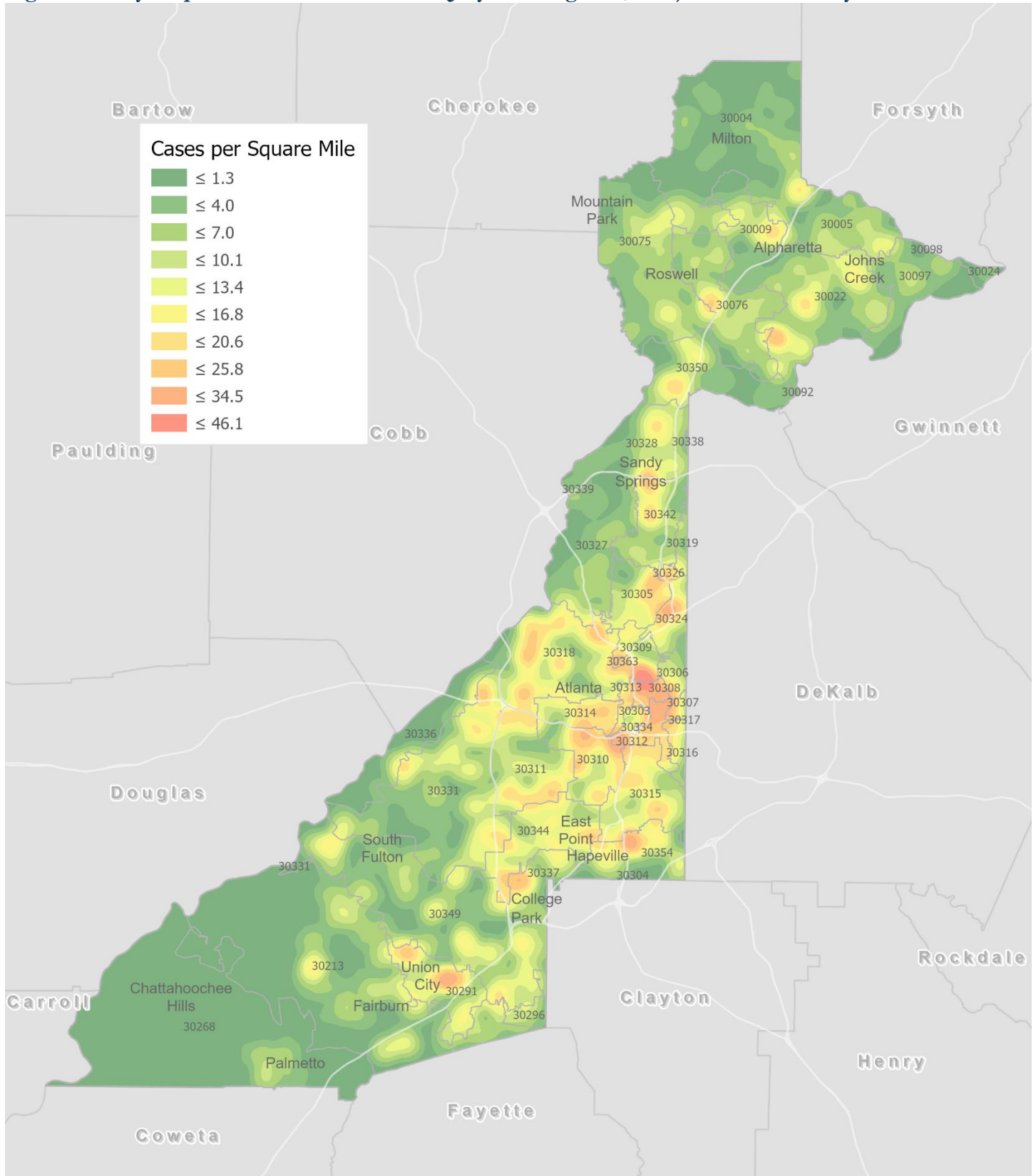
<sup>1</sup>**New cases:** Cases diagnosed in most recent 14 days (based on reported dates of positive sample collection). To allow for lag in reporting results of new diagnoses from samples collected in the most recent week, data used for incident diagnoses analyses were moved back by one week. <sup>2</sup>**% change:** These reflect the percentage increase or decrease in new diagnoses between the 14 days preceding the most recent 7 days and the 14 days preceding that. <sup>3</sup>**(Incidence) Rate:** Rate of new diagnoses in the last 14 day period preceding the immediate past week. **\*\*Data cleaning** (either during case interviews or address geo-coding) may lead to reassignment of few cases from one territory to another based on their corrected addresses. These may appear as "decreases" when compared to the previous counts. These do not reflect errors in the data collection or analysis process but only reflect the minor day-to-day fluctuations in case counts that arise in an evolving public health database like COVID's. **Note: All data reported are preliminary and subject to change.**

Fig. 8. Incidence Rates by Fulton City for Recent 14-day Reporting Period



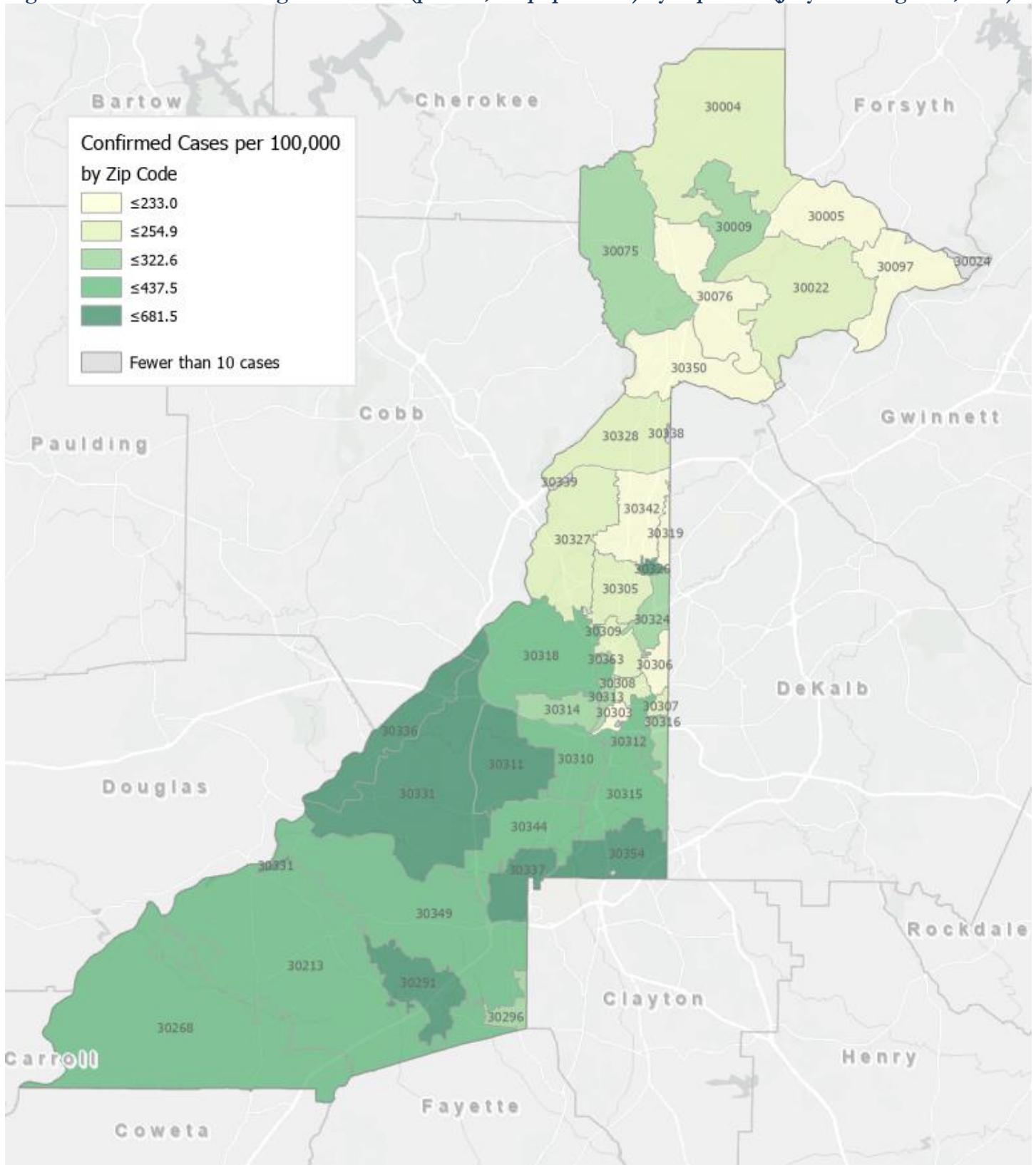
\*Rates shown are per 100,000 persons | All data shown are preliminary and are subject to change as testing results get updated.

Fig. 9. Density Map – New COVID-19 Cases (July 24 – August 6, 2021) in Fulton County



**New COVID-19 cases:** Cases diagnosed in most recent 14 days (based on reported dates of positive sample collection). To allow for lag in reporting results of positive cases from samples collected in the immediate past 7 days, data used for incident diagnoses analyses are moved back by one week. Map reflects new COVID-19 cases diagnosed between July 24<sup>th</sup> and August 6<sup>th</sup>, 2021 across Fulton County, excluding LTCF cases.

Fig. 10. New COVID-19 Diagnoses Rates (per 100,000 population) by Zip Code (July 24 – August 6, 2021)



\*Rates shown are per 100,000 populations.

**New COVID-19 cases:** Cases diagnosed in most recent 14 days (based on reported dates of positive sample collection). To allow for lag in reporting results of positive cases from samples collected in the immediate past 7 days, data used for incident diagnoses analyses are moved back by one week. Data used excludes outbreak-related cases at long-term care facilities and map shown reflects only the new non-LTCF cases diagnosed between the dates shown in map title. See page 8 for zip code break down table.

## COVID-19 NEW CASE<sup>1</sup> COUNTS BY ZIP CODE

Zip Code	Recent 14-day reporting period (7/24– 8/6)	Previous 14-day reporting period (7/10– 7/23)	% Change between reporting periods <sup>2</sup>
<b>All Fulton</b>	<b>3820</b>	<b>1190</b>	<b>↑ 221.0%</b>
30004	131	31	↑ 322.6%
30005	76	28	↑ 171.4%
30009	55	14	↑ 292.9%
30022	189	46	↑ 310.9%
30023	0	0	-
30024	<10	<10	-
30075	138	45	↑ 206.7%
30076	109	41	↑ 165.9%
30080	0	0	-
30097	34	11	↑ 209.1%
30098	<10	0	-
30135	0	0	-
30138	0	0	-
30139	0	0	-
30213	197	76	↑ 159.2%
30268	43	<10	↑ 514.3%
30291	152	39	↑ 289.7%
30296	14	<10	↑ 55.6%
30301	0	0	-
30303	11	<10	↑ 175.0%
30305	78	22	↑ 254.5%
30306	27	19	↑ 42.1%
30307	16	<10	↑ 166.7%
30308	51	19	↑ 168.4%
30309	74	31	↑ 138.7%
30310	128	41	↑ 212.2%
30311	158	45	↑ 251.1%
30312	112	29	↑ 286.2%
30313	31	12	↑ 158.3%
30314	68	26	↑ 161.5%
30315	153	55	↑ 178.2%
30316	37	18	↑ 105.6%
30318	277	61	↑ 354.1%
30319	15	0	↑ 100.0%
30321	0	0	-
30324	82	30	↑ 173.3%
30326	25	<10	↑ 257.1%
30327	65	18	↑ 261.1%
30328	97	33	↑ 193.9%
30331	273	86	↑ 217.4%
30334	<10	0	-
30336	10	<10	↑ 400.0%
30337	76	16	↑ 375.0%

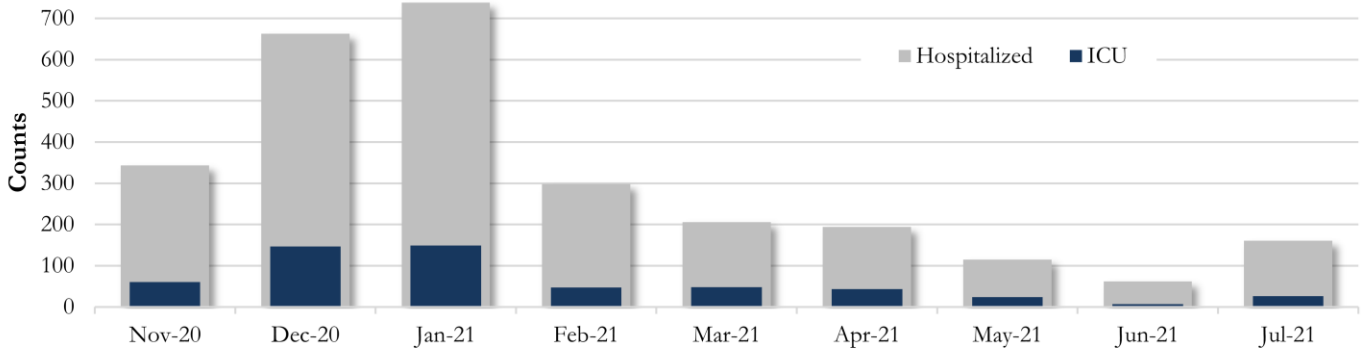
Zip Code	Recent 14-day reporting period (7/24– 8/6)	Previous 14-day reporting period (7/10– 7/23)	% Change between reporting periods
30338	<10	0	-
30339	33	<10	↑ 3200.0%
30340	0	0	-
30341	<10	0	-
30342	90	25	↑ 260.0%
30344	158	46	↑ 243.5%
30345	<10	0	-
30349	289	117	↑ 147.0%
30350	83	28	↑ 196.4%
30354	101	24	↑ 320.8%
30358	0	0	-
30363	16	<10	↑ 1500.0%
30374	<10	<10	-
30606	0	0	-
31131	0	0	-
31150	0	0	-
Unknown	37	18	-

<sup>1</sup>**New cases:** Cases diagnosed in most recent 28 days (based on reported dates of positive sample collection). To allow for lag in reporting results of new diagnoses from samples collected in the most recent week, data used for incident diagnoses analyses were moved back by one week. <sup>2</sup>**Percent change:** These reflect the percentage increase or decrease of new diagnoses between the 14 days preceding the past 7 days and the 14 days preceding that. Changes in ZIP codes with less than 10 cases in both 2 week intervals are not reported.

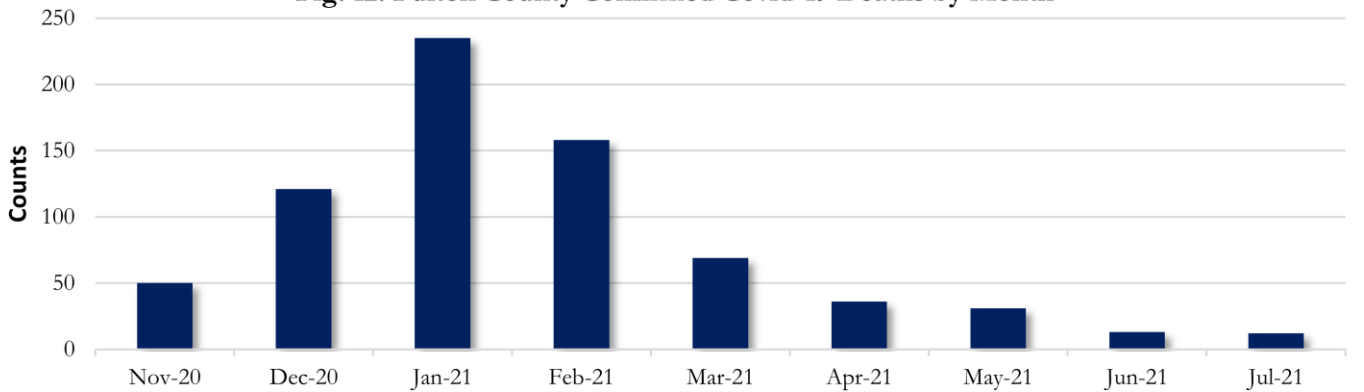


**COVID-19 HOSPITALIZATIONS, ICU ADMISSIONS AND DEATHS IN FULTON**

**Fig. 11. Fulton County Covid-19 Cases Hospitalized and Admitted to ICU by Month**

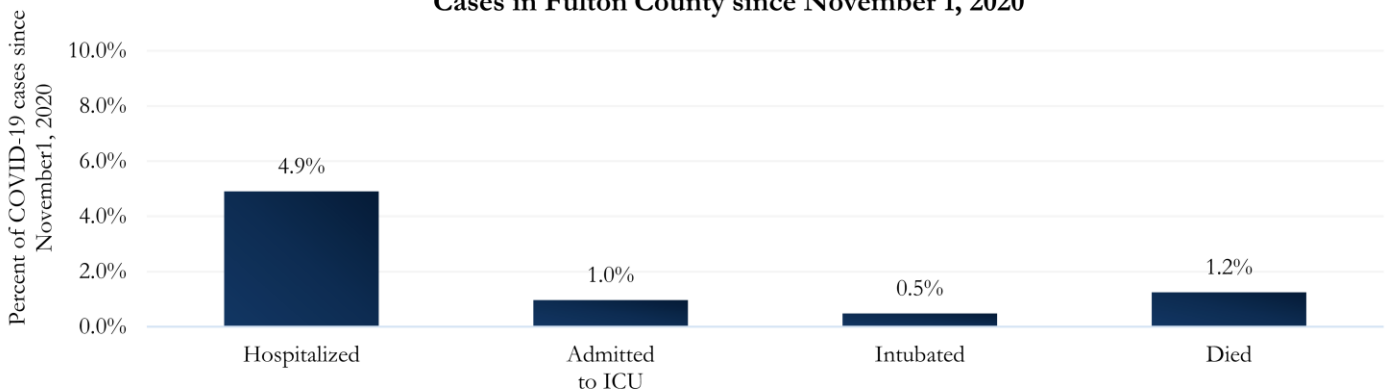


**Fig. 12. Fulton County Confirmed Covid-19 Deaths by Month**



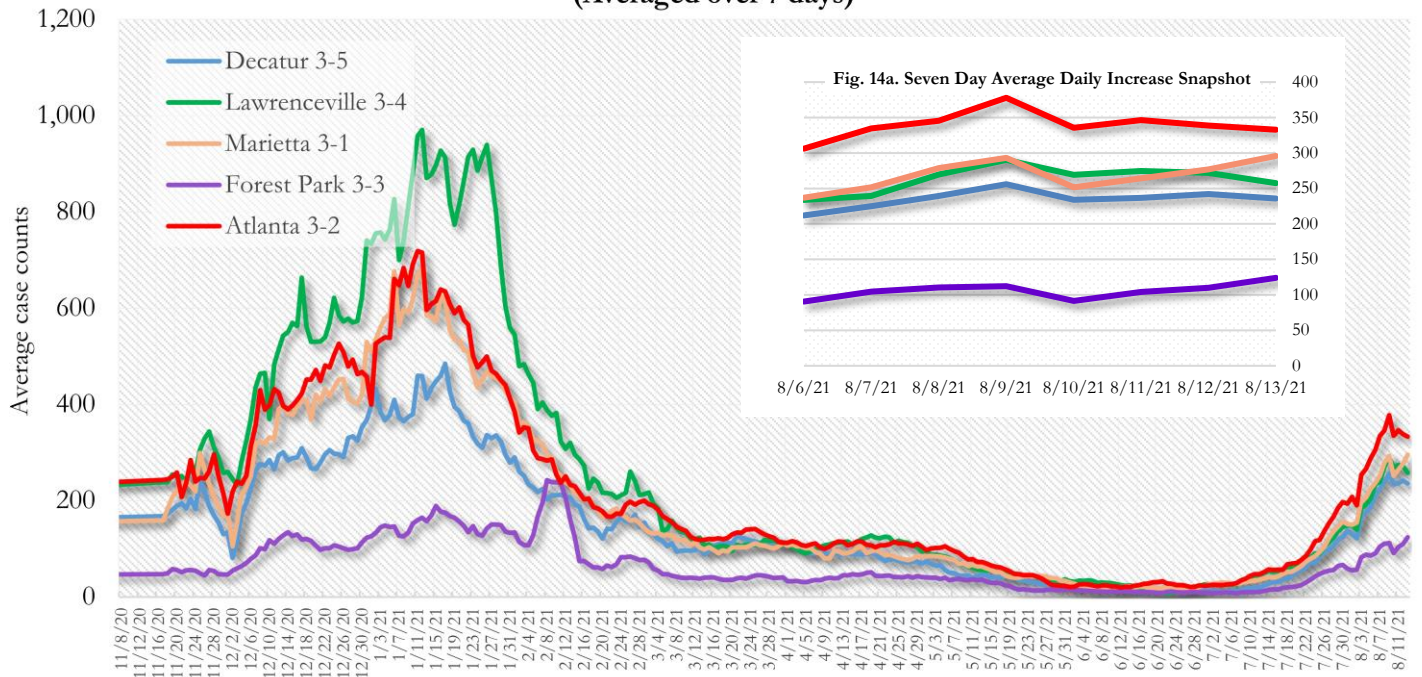
Values for July 2021 in figures 13 and 14 are subject to change as more hospitalizations, ICU admissions, and deaths get reported to state and local entities.

**Fig. 13. Hospitalizations, ICU Admissions, Intubations, and Deaths among all Covid-19 Cases in Fulton County since November 1, 2020**



### COVID-19 CASE TRENDS IN FULTON AND SURROUNDING DISTRICTS

**Fig. 14. Daily Case Counts for Atlanta Metro Districts  
(Averaged over 7 days)**



## DEMOGRAPHIC DISTRIBUTIONS – COVID-19 CASES AND DEATHS

**Table A** - Cumulative and recent confirmed Covid-19 case and death counts by gender, age, and race/ethnicity in Fulton County, Georgia. Past 28 day period refers to July 10 – August 6, 2021

	Total Confirmed Cases	% of Total Cases	Confirmed Cases past 28 days	% of Confirmed Cases past 28 days	Total Confirmed Deaths	% of Total Deaths	Confirmed Deaths past 28 days	% of Confirmed Deaths past 28 days
<b>TOTAL</b>	<b>91387</b>		<b>4948</b>		<b>1389</b>		<b>13</b>	
Female	48351	52.9%	2753	55.6%	660	47.5%	<10	46.2%
Male	42606	46.6%	2185	44.2%	729	52.5%	<10	53.8%
Unknown*	430	<1%	<10	<1%	0	-	0	-
0-9	3709	4.1%	406	8.2%	0	-	0	-
10-19	9730	10.6%	664	13.4%	<10	<1%	0	-
20-29	20651	22.6%	1072	21.7%	<10	<1%	0	-
30-39	17687	19.4%	1086	21.9%	29	2.1%	0	-
40-49	13868	15.2%	719	14.5%	43	3.1%	<10	15.4%
50-59	12192	13.3%	515	10.4%	127	9.1%	<10	7.7%
60-69	7086	7.8%	267	5.4%	257	18.5%	<10	23.1%
>70	6411	7.0%	212	4.3%	927	66.7%	<10	53.8%
Unknown*	53	<1%	<10	<1%	0	-	0	-
Asian, NH	3458	3.8%	127	2.6%	24	1.7%	0	-
Black, NH	39329	43.0%	2746	55.5%	860	61.9%	<10	61.5%
White, NH	30024	32.9%	1069	21.6%	441	31.7%	<10	30.8%
Hispanic, all races	9508	10.4%	330	6.7%	58	4.2%	<10	7.7%
Other, NH	3044	3.3%	135	2.7%	<10	<1%	0	-
Unknown*	6024	6.6%	541	10.9%	0	-	0	-

\*Unknown includes cases not yet interviewed. 28 days delayed by seven to account for lag in reporting lab results. Deaths refer to all persons who had a positive PCR test result for Covid-19 and there is evidence that COVID-19 was the cause of death or a significant contributor to their death.

The following data are updated every two weeks.

Last updated 8/4/2021

Data are from confirmed cases and PCR testing only.

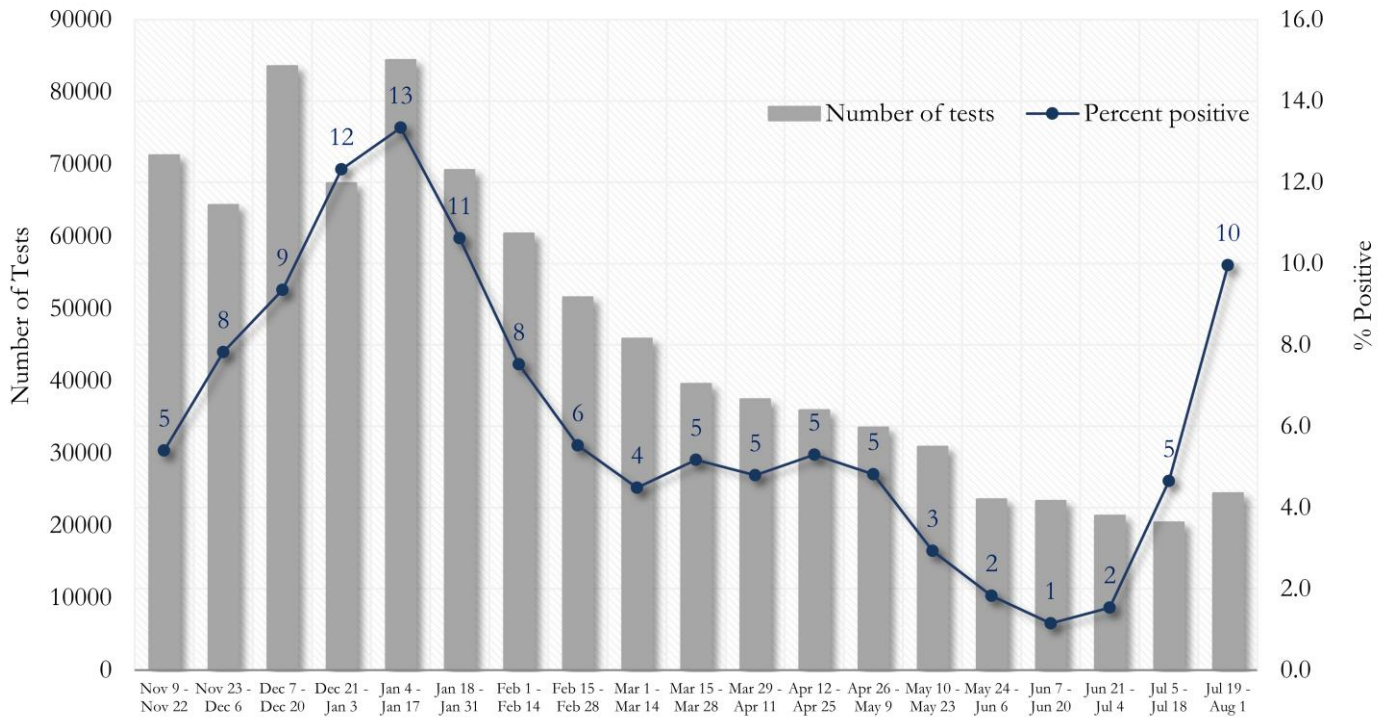
These data are generated using a fixed start date and counted forward in 14-day intervals. Using these time blocks allows for the stability in trends over time and accounts for delays in reporting lab results.

In the interest of keeping the reports concise and useful, the cumulative counts updated on a monthly basis can now be viewed between updates at the Fulton County Board of Health website [here](#).

Please visit the Georgia Department of Public Health Daily Status Report [here](#) for cumulative daily counts.

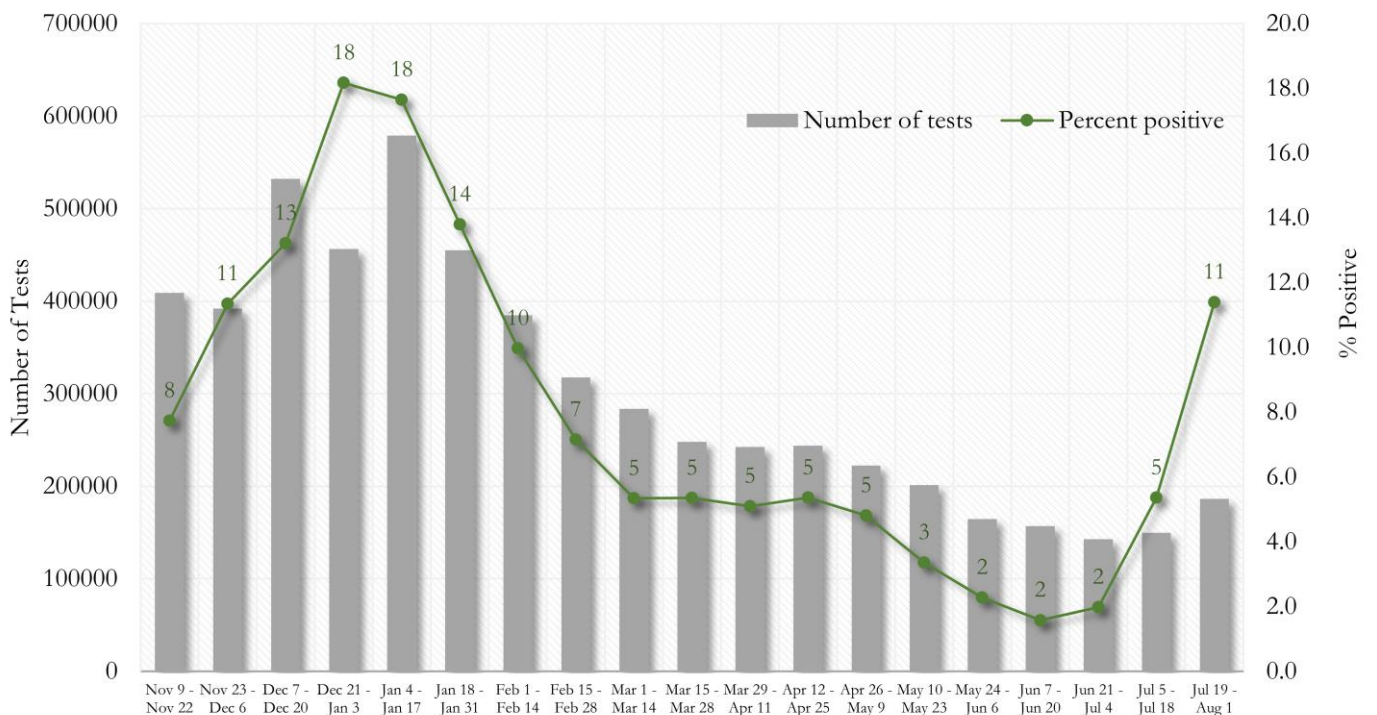
**COVID-19 TESTING AND POSITIVITY IN FULTON COUNTY AND GEORGIA**

**Fig. 15. Trends in Positive COVID-19 Tests in Fulton County by 14-day Periods**



\*Data on Polymerase Chain Reaction (PCR) tests only included.

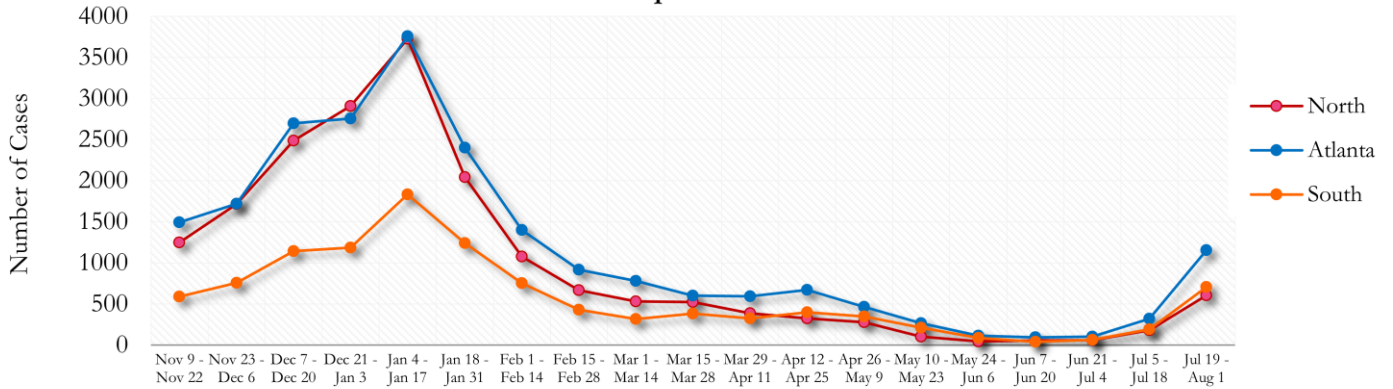
**Fig. 16. Trends in Positive COVID-19 Tests in Georgia by 14-day Periods**



\*Data on Polymerase Chain Reaction (PCR) tests only included.

**TRENDS IN COVID-19 CASES AMONG DEMOGRAPHIC GROUPS (14 DAY PERIODS)**

**Fig. 17. Trends in Geographic distribution of COVID-19 Cases in Fulton County by 14-day periods**

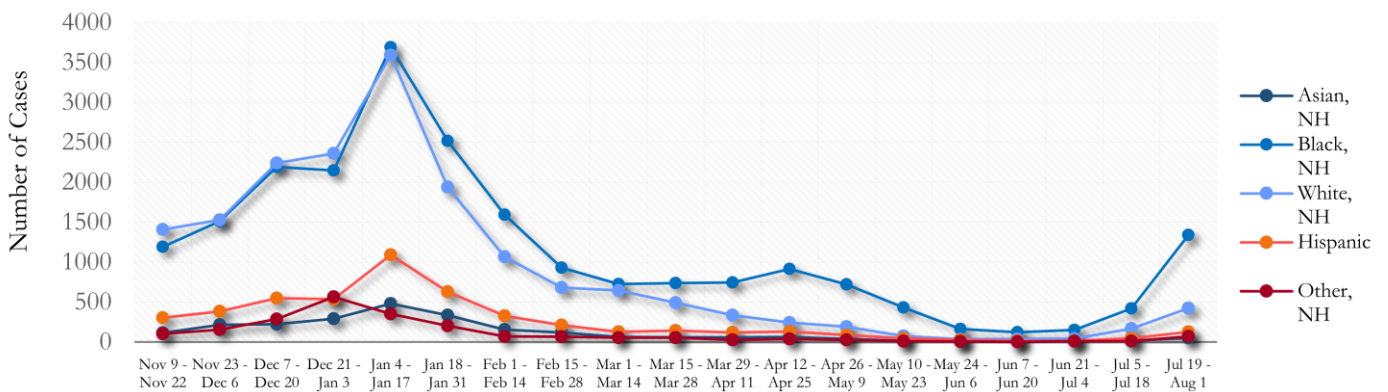


In the past two weeks, Atlanta accounted for the majority of new cases.

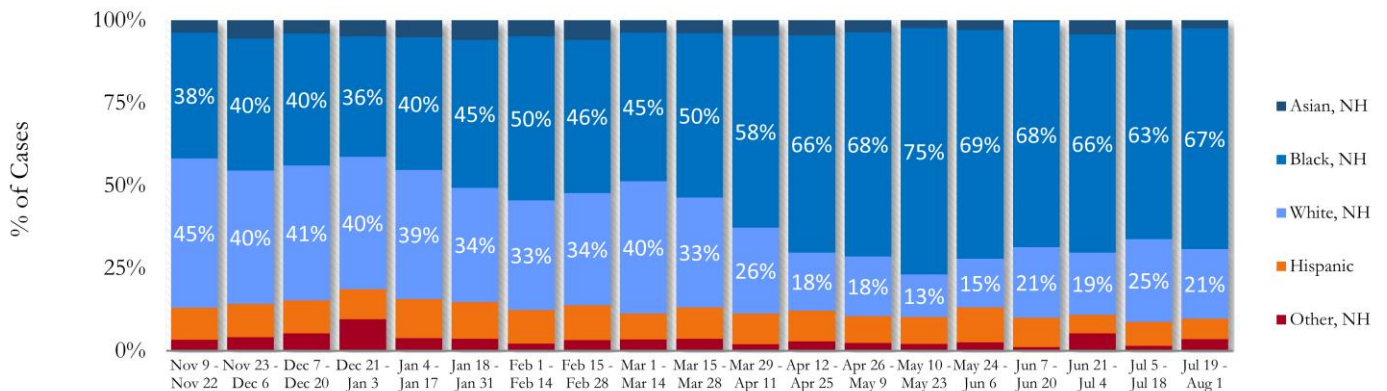
\*North - Includes all Fulton cities north of Atlanta (Alpharetta, Johns Creek, Milton, Mountain Park, Roswell, Sandy Springs)

\*South - Includes all Fulton cities south of Atlanta (Chattahoochee Hills, College Park, East Point, Fairburn, Hapeville, Palmetto, South Fulton, and Union City)

**Fig. 18. Trends in Racial Distribution of COVID-19 Cases in Fulton County by 14-day periods**

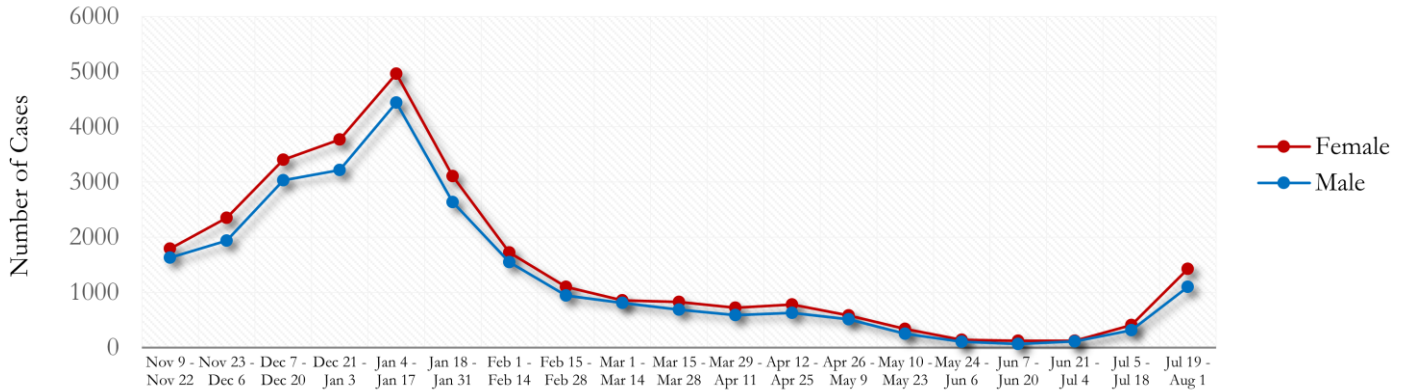


**Fig. 19. Racial Distribution of COVID-19 Cases in Fulton County by 14-day periods**

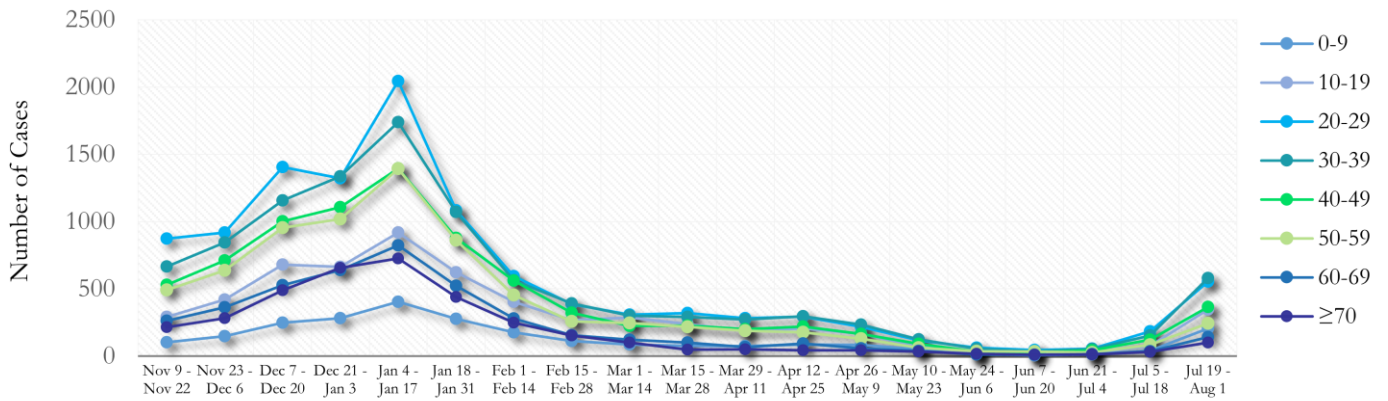


About 7% of all Fulton County COVID cases are missing data on patient race and ethnicity and in the past two weeks, about 20% of cases are missing this data. Percentages do not include the missing data and thus are subject to change as data are cleaned.

**Fig. 20. Trends in Gender Distribution of COVID-19 Cases in Fulton County by 14-day periods**

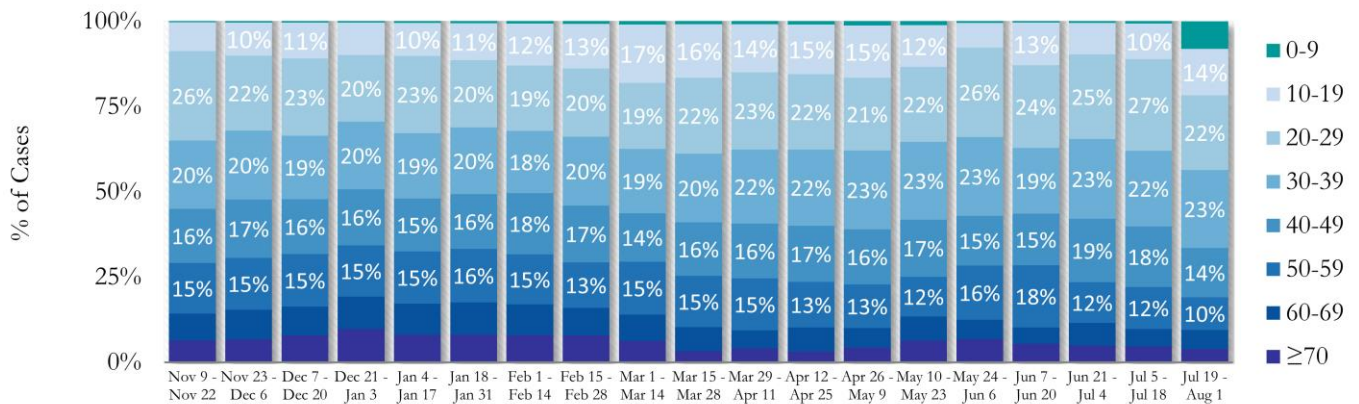


**Fig. 21. Trends in Age Distribution of COVID-19 Cases in Fulton County by 14-day periods**



In the most recent two weeks, 20-29 year olds and 30-39 year olds accounted for the majority of new cases.

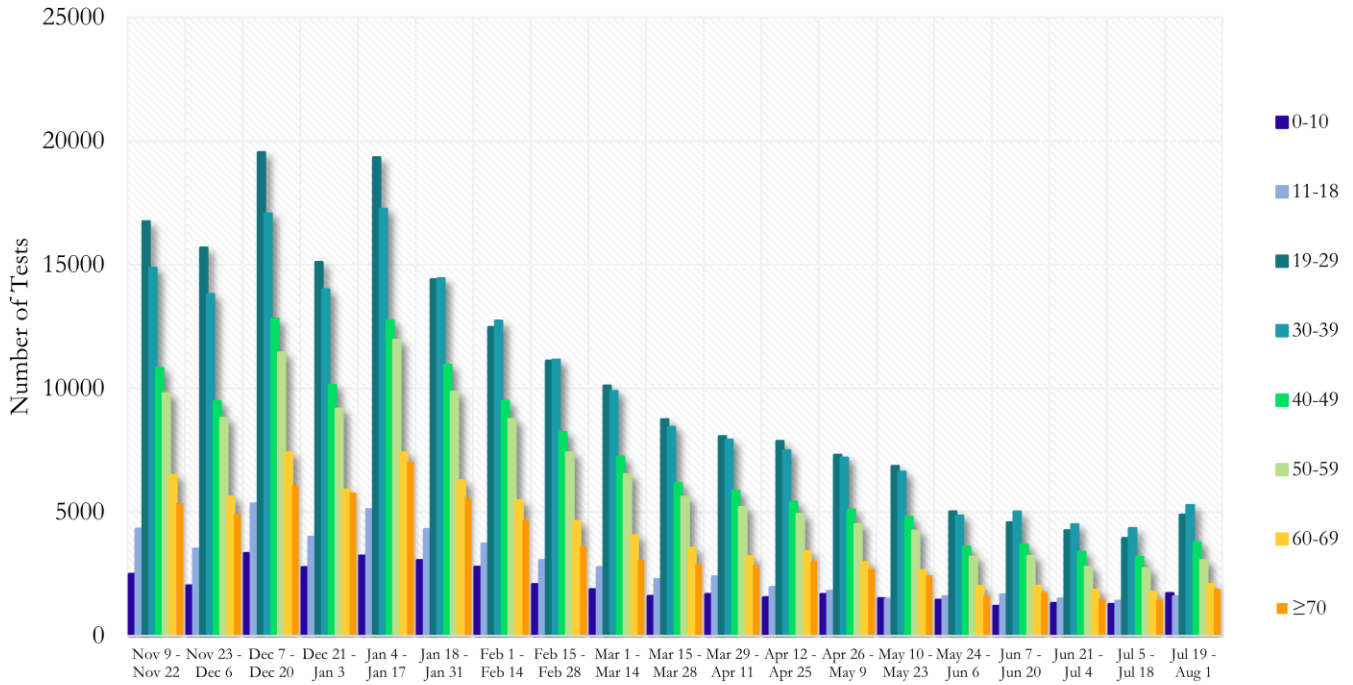
**Fig. 22. Age Distribution of COVID-19 Cases in Fulton County by 14-day periods**



Value labels under 10% are not shown.

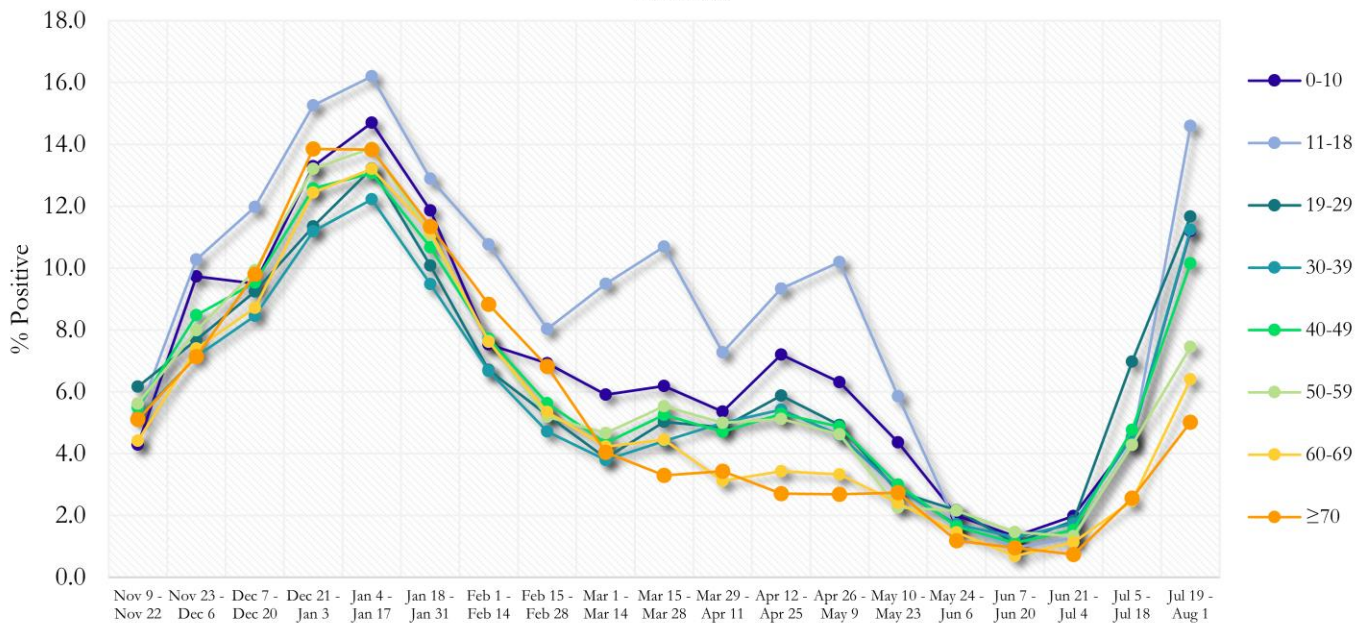
**COVID-19 TESTING AND POSITIVITY IN FULTON COUNTY BY AGE AND RACE**

**Fig. 23. COVID-19 Tests by Age in Fulton County by 14-day Periods**



\*Data on Polymerase Chain Reaction (PCR) tests only included.

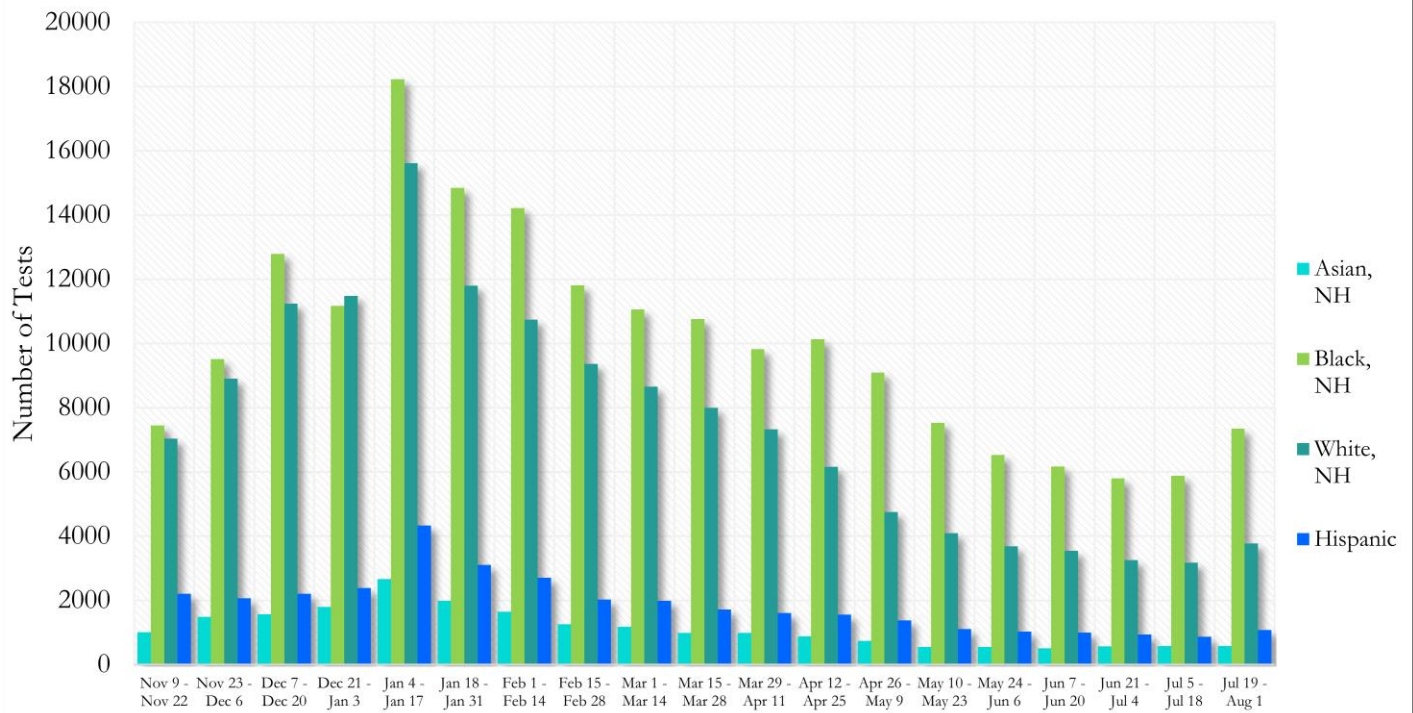
**Fig. 24. Percent Positive COVID-19 Tests by Age Group in Fulton County by 14-day Periods**



\*Data on Polymerase Chain Reaction (PCR) tests only included.

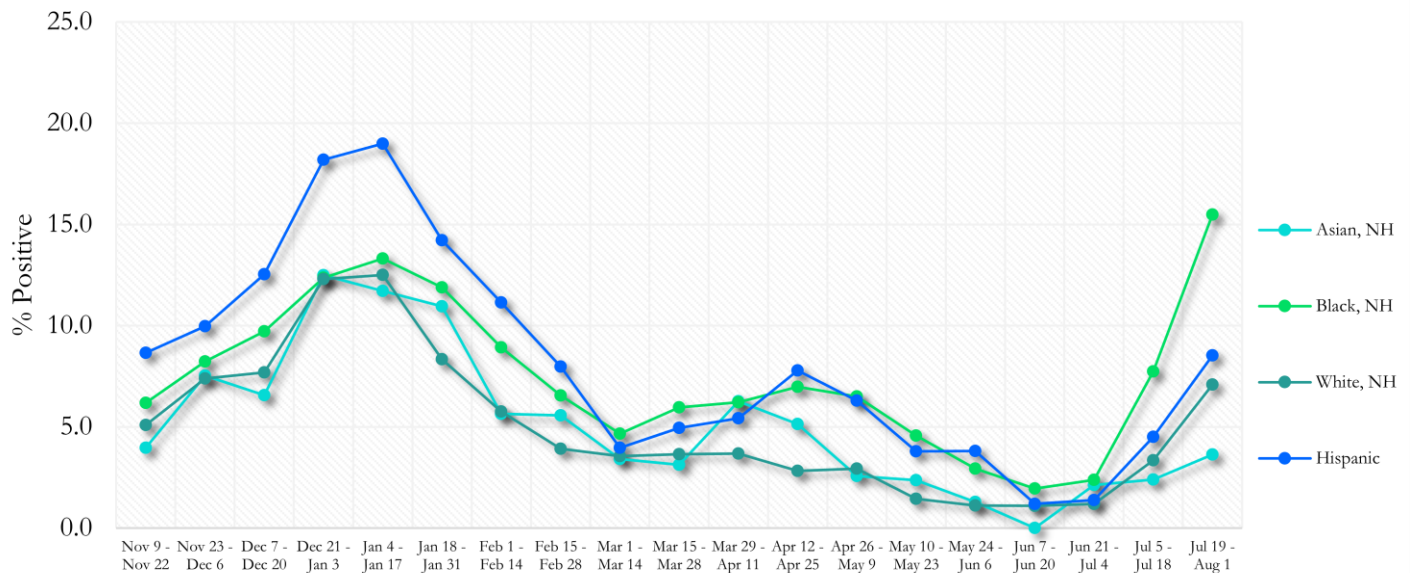


**Fig. 25. COVID-19 Tests by Race and Ethnicity in Fulton County by 14-day Periods**



\*Data on Polymerase Chain Reaction (PCR) tests only included. For the recent two weeks, 48% of test results did not have race/ethnicity information.

**Fig. 26. Percent Positive COVID-19 Tests by Race and Ethnicity in Fulton County by 14-day Periods**



\*Data on Polymerase Chain Reaction (PCR) tests only included.