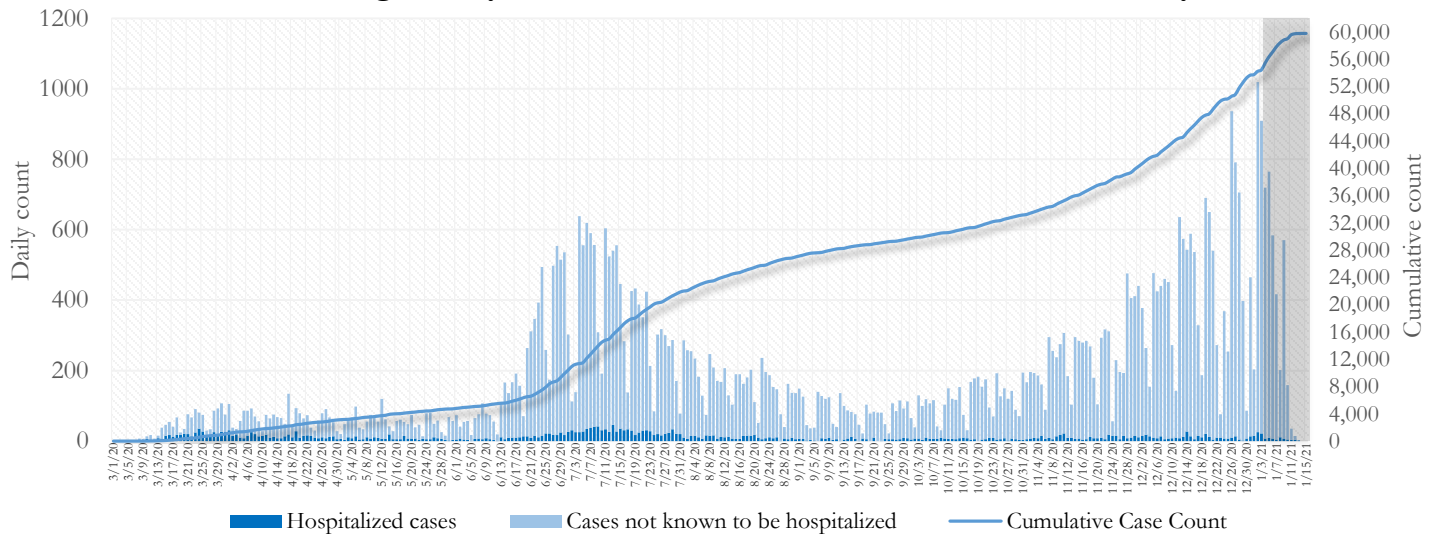


## SUMMARY

- As of January 15, 2021, Fulton County has recorded **59,792 cases of the 2019 novel coronavirus (COVID-19)** and **808 confirmed COVID-19 deaths**. 126 deaths are currently being reviewed by GA DPH to confirm cause of death.
- Of the **8,278 new cases** between December 26 and January 8, the central portion of the county (Atlanta) accounted for 38% while the northern and southern parts accounted for 41% and 18% respectively.
- By city, new COVID-19 case rates range from 454.0 per 100,000 persons (College Park) to 1120.0 per 100,000 persons (Mountain Park). **[Fulton County Diagnoses Rates (per 100,000 persons): Cumulative – 5439.7; Incidence –753.1]**. See map showing incidence case rate by ZIP code on Pg.17.
- Among all persons diagnosed with COVID-19 in Fulton County since July 1, **4.5% required hospitalization and 1.0% died**.
- Of all testing done in Fulton County between December 21 and January 3, the **percent positivity rate was 12.4%**.

**Fig 1. Daily and Cumulative COVID-19 cases in Fulton County, GA**



\*Counts shown reflect the number of confirmed cases as of 8:00 pm on 1/14/21 using the date of first positive sample collection. Where date of sample collection was not available or missing, the date of report creation in GA SENDSS was used instead. **Note:** Delays in data reporting may cause changes in data counts, particularly in the shaded portion. Data throughout this report are preliminary and subject to ongoing data cleaning processes, and thus are subject to change. This report includes data on confirmed PCR tests only. For data on antigen testing, see the [GA DPH County Indicator Reports here](#).

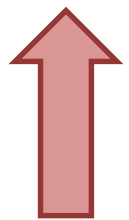
## DISTRIBUTION OF COVID-19 CASES BY REGION

**New cases:** 38% of the new COVID-19 cases in the past 2 weeks occurred in Atlanta while 41% and 18% occurred in the Northern and Southern regions of the county respectively.

Fulton Region	% Cumulative count	% New cases*
Atlanta	42.5%	38.2%
North <sup>1</sup>	33.7%	41.0%
South <sup>2</sup>	19.0%	17.5%
Unincorporated/Unknown	4.8%	3.3%

<sup>1</sup>Includes all Fulton County cities north of Atlanta (Alpharetta, Johns Creek, Milton, Mountain Park, Roswell, Sandy Springs) | <sup>2</sup>Includes all cities south of Atlanta (Chattahoochee Hills, College Park, East Point, Fairburn, Hapeville, Palmetto, South Fulton, and Union City) \***New cases:** Cases diagnosed in the past 2 weeks only (between 12/26/20 – 1/8/21).

In the recent two week reporting period (12/26-1/8), there were more new cases of COVID-19 in Fulton County than the previous two weeks (12/12-12/25).



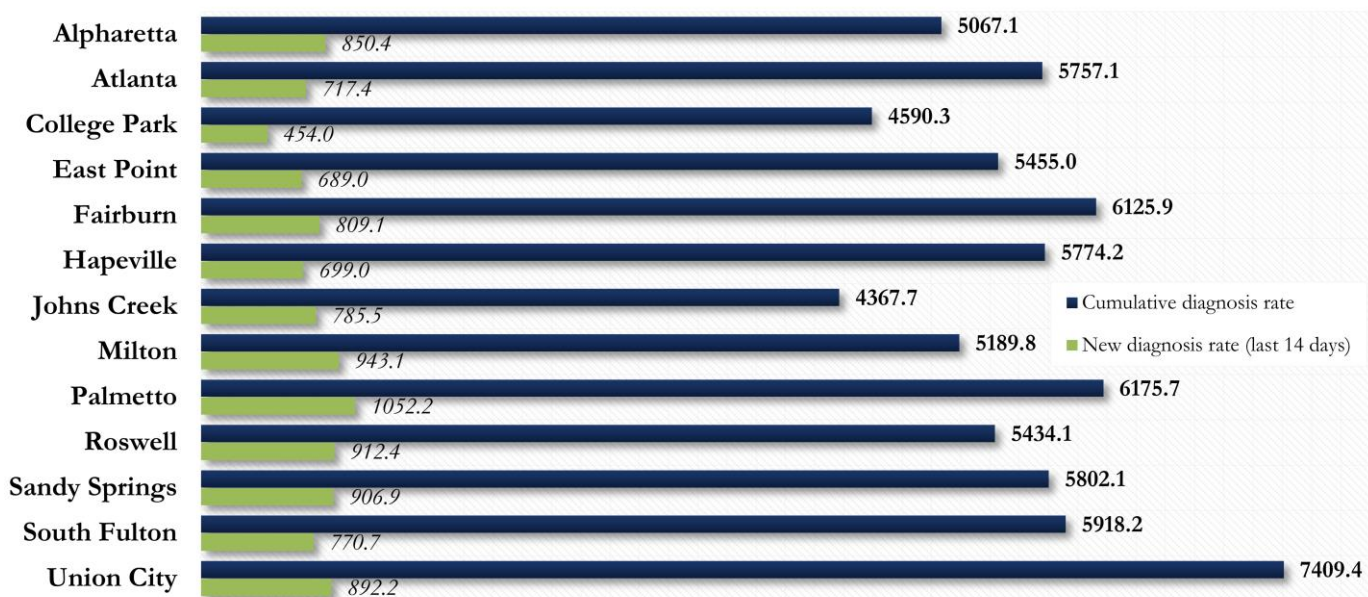
\*Delayed a week to account for testing results turnaround time.

## COVID-19 CASE COUNTS AND RATES BY CITY

	Prior (1/12/21)	Current Total (1/15/21)			New Cases (Period: 12/12/20 – 1/8/21) <sup>1</sup>			
	Count	Count	%	Cum. Rate <sup>2</sup>	Recent 14 d. (12/26–1/8)	Prior 14 d. (12/12–12/25)	% change <sup>3</sup>	Rate <sup>4</sup> (Last 14 d).
Alpharetta	3171	3277	5.5%	5067.1	550	445	↑ 23.6%	850.4
Atlanta	24696	25399	42.5%	5757.1	3165	2600	↑ 21.7%	717.4
Chattahoochee Hills	84	91	0.2%	3174.0	14	12	↑ 16.7%	488.3
College Park	627	637	1.1%	4590.3	63	52	↑ 21.2%	454.0
East Point	1863	1908	3.2%	5455.0	241	172	↑ 40.1%	689.0
Fairburn	872	901	1.5%	6125.9	119	80	↑ 48.8%	809.1
Hapeville	368	380	0.6%	5774.2	46	30	↑ 53.3%	699.0
Johns Creek	3538	3653	6.1%	4367.7	657	515	↑ 27.6%	785.5
Milton	1927	1981	3.3%	5189.8	360	260	↑ 38.5%	943.1
Mountain Park	22	23	0.0%	3680.0	<10	<10	↑ 40.0%	1120.0 <sup>5</sup>
Palmetto	259	270	0.5%	6175.7	46	37	↑ 24.3%	1052.2
Roswell	4992	5122	8.6%	5434.1	860	581	↑ 48.0%	912.4
Sandy Springs	5967	6116	10.2%	5802.1	956	763	↑ 25.3%	906.9
South Fulton	5472	5629	9.4%	5918.2	733	556	↑ 31.8%	770.7
Union City	1510	1553	2.6%	7409.4	187	140	↑ 33.6%	892.2
Unknown	4424	2852	4.8%	-	270	158	-	-

<sup>1</sup>**New cases:** Cases diagnosed in most recent 28 days (based on reported dates of positive sample collection). To allow for lag in reporting results of new diagnoses from samples collected in the most recent week, data used for incident diagnoses analyses were moved back by one week. <sup>2</sup>**Cumulative diagnosis rate:** Population estimates from US Census Bureau used to calculate cumulative diagnoses rate. All rates shown are per 100,000 persons. <sup>3</sup>**% change:** These reflect the percentage increase or decrease in new diagnoses between the 14 days preceding the most recent 7 days and the 14 days preceding that. <sup>4</sup>**(Incidence) Rate:** Rate of new diagnoses in the last 14 day period preceding the immediate past week. **\*\*Data cleaning** (either during case interviews or address geo-coding) may lead to reassignment of few cases from one territory to another based on their corrected addresses. These may appear as “decreases” when compared to the previous day’s count. These do not reflect errors in the data collection or analysis process but only reflect the minor day-to-day fluctuations in case counts that arise in an evolving public health database like COVID’s. <sup>5</sup>Incidence rate is skewed high due to small population. **Note: All data reported are preliminary and subject to change.**

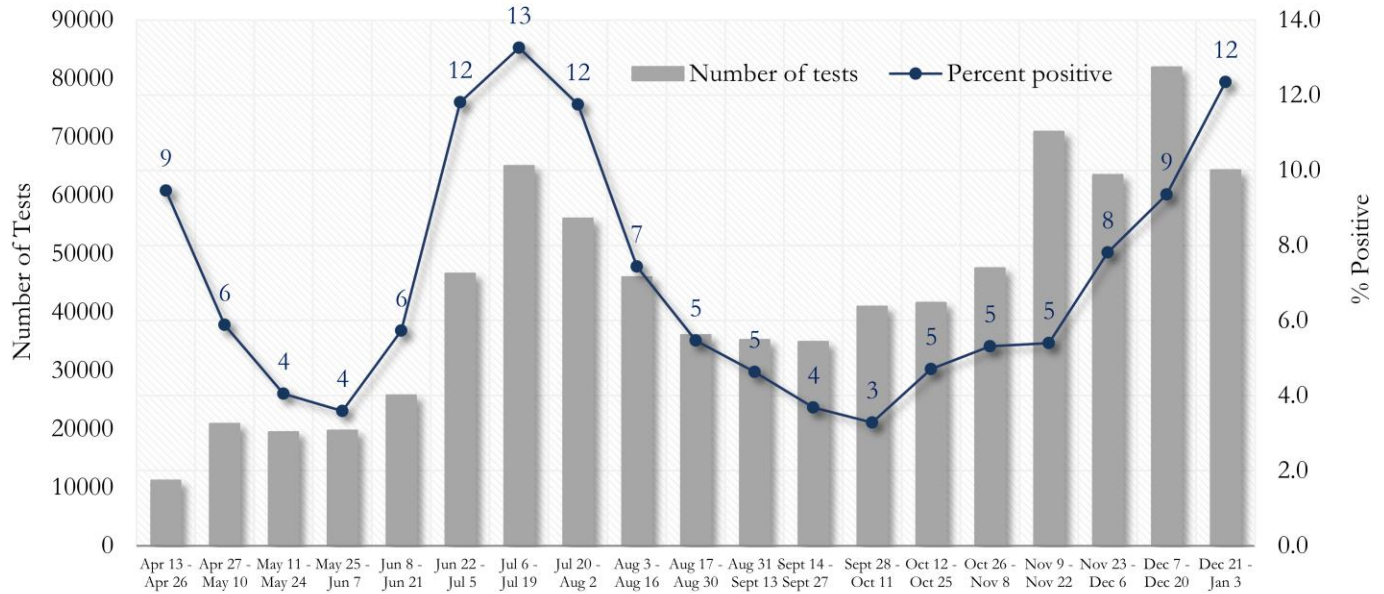
Fig. 2. Incident &amp; Cumulative Diagnoses Rates for COVID-19 by City



\*Rates shown are per 100,000 persons | **Note:** Mass testing in specific locations (e.g. long term care facilities) may cause sharp increases in the cumulative rate of COVID-19 diagnosis in those territories. All data shown are preliminary and are subject to change as testing results get updated.

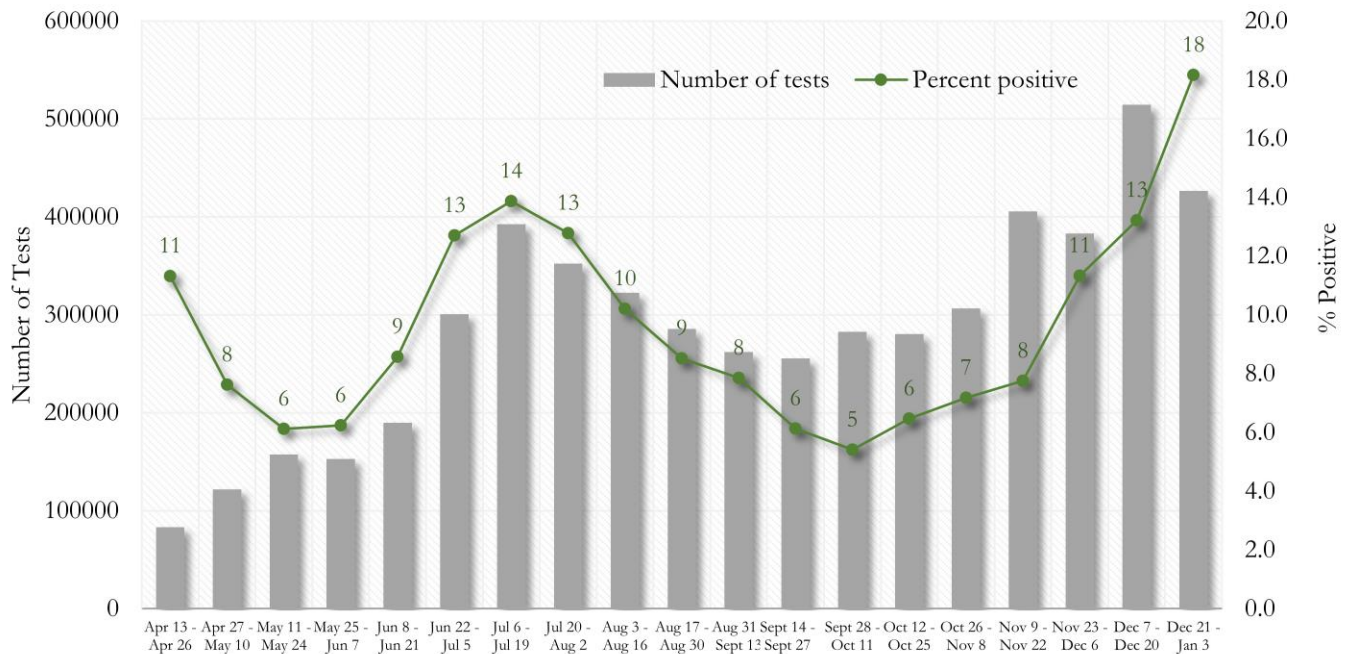
## COVID-19 TESTING AND POSITIVITY IN FULTON COUNTY AND GEORGIA

**Fig. 3. Trends in Positive COVID-19 Tests in Fulton County by 14-day Periods**



\*Data on Polymerase Chain Reaction (PCR) tests only included. This rate is subject to change as more test results are reported.

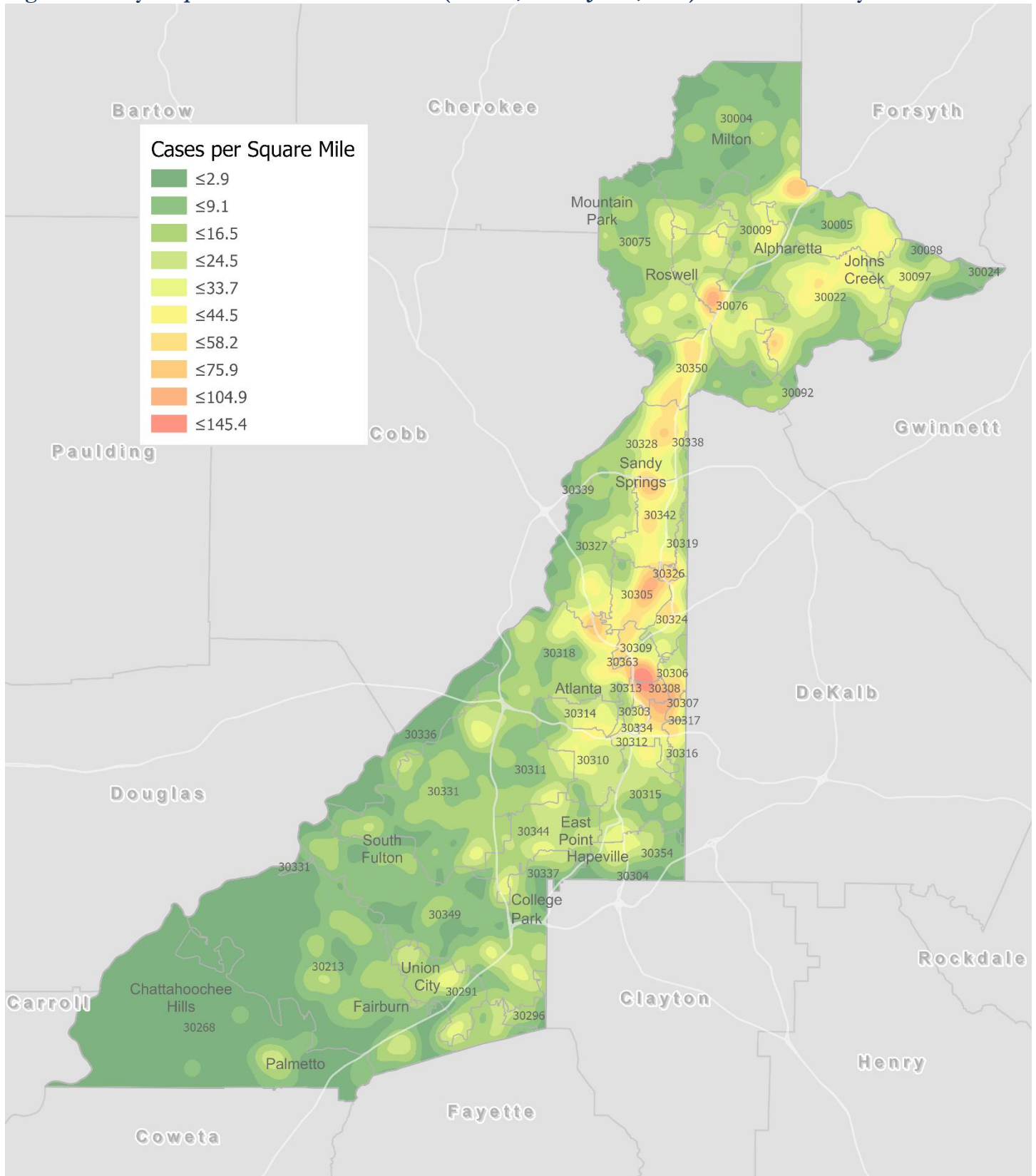
**Fig. 4. Trends in Positive COVID-19 Tests in Georgia by 14-day Periods**



\*Data on Polymerase Chain Reaction (PCR) tests only included. This rate is subject to change as more test results are reported.

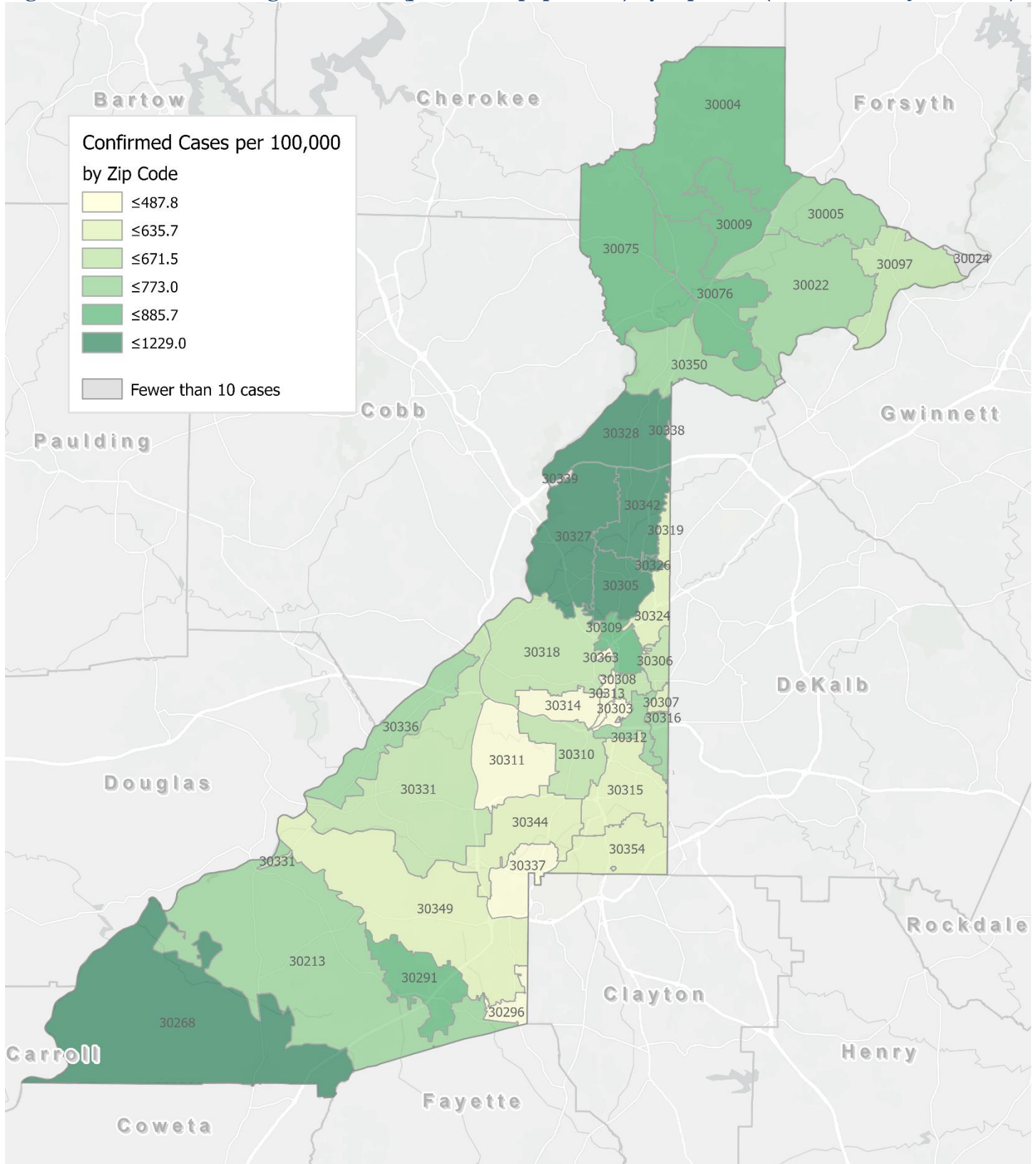


Fig. 5. Density Map – New COVID-19 Cases (Dec 26, 2020– Jan 8, 2021) in Fulton County



**New COVID-19 cases:** Cases diagnosed in most recent 14 days (based on reported dates of positive sample collection). To allow for lag in reporting results of positive cases from samples collected in the immediate past 7 days, data used for incident diagnoses analyses are moved back by one week. Map reflects new COVID-19 cases diagnosed between Dec 26<sup>th</sup>, 2020 and Jan 8<sup>th</sup>, 2021 across Fulton County, excluding LTCF cases.

Fig. 6. New COVID-19 Diagnoses Rates (per 100,000 population) by Zip Code (Dec 26, 2020– Jan 8, 2021)



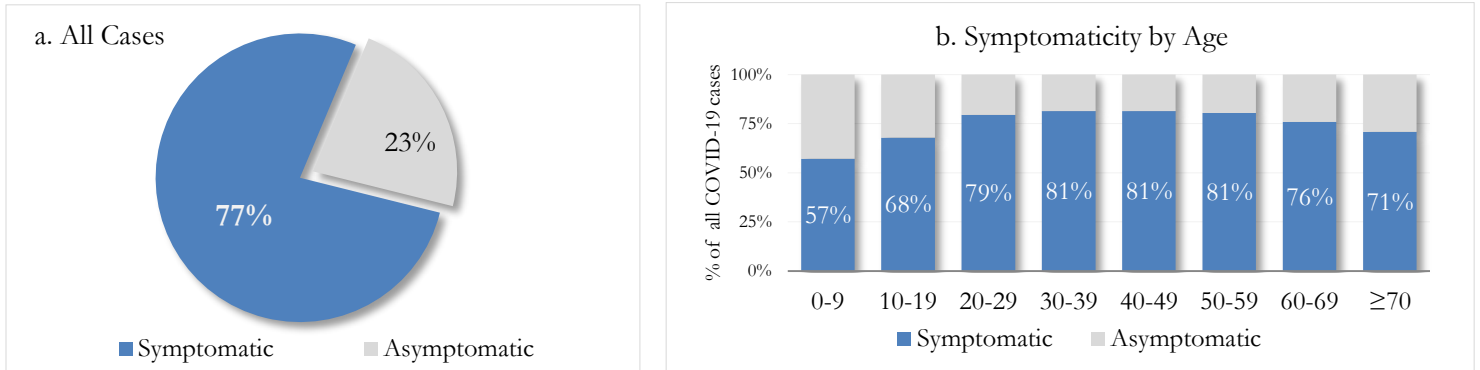
\*Rates shown are per 100,000 populations.

**New COVID-19 cases:** Cases diagnosed in most recent 14 days (based on reported dates of positive sample collection). To allow for lag in reporting results of positive cases from samples collected in the immediate past 7 days, data used for incident diagnoses analyses are moved back by one week. Data used excludes outbreak-related cases at long-term care facilities and map shown reflects only the new non-LTCF cases diagnosed between the dates shown in map title. See page 17 for zip code break down table.

## REPORTING SYMPTOMS AMONG PERSONS WITH COVID-19 IN FULTON

People with COVID-19 have reported a wide range of symptoms ranging from mild symptoms to severe illness. Symptoms may appear 2-14 days after exposure to the virus. Symptoms reported include: cough, shortness of breath/difficulty breathing, fever, chills, muscle pain, headache, sore throat, congestion, nausea or vomiting, diarrhea, or new loss of taste or smell – Centers for Disease Control and Prevention (CDC)  
<https://www.cdc.gov/coronavirus/2019-ncov/symptoms-testing/symptoms.html>

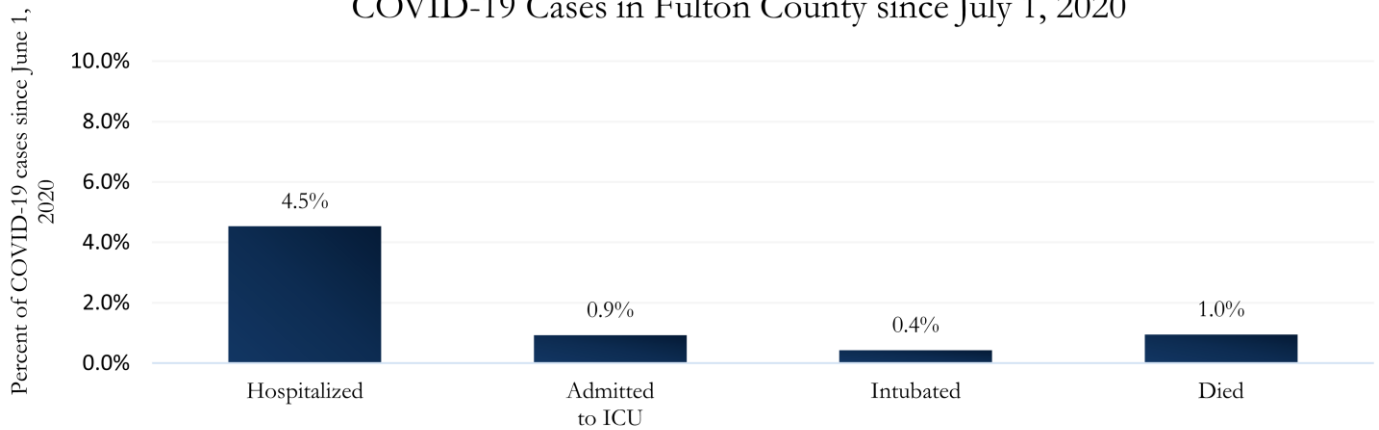
Fig. 7a & b. Total Proportion Reporting Symptoms in Fulton County



\*\*\*COVID-19 cases who have been case interviewed or had medical charts reviewed as of 1/14/21 only. n = 34,126\*\*\*

## COVID-19 HOSPITALIZATIONS, ICU ADMISSIONS AND DEATHS IN FULTON

Fig. 8. Hospitalizations, ICU Admissions, Intubations, and Deaths among COVID-19 Cases in Fulton County since July 1, 2020



## DEMOGRAPHIC DISTRIBUTIONS – COVID-19 CASES AND DEATHS

### A. Distribution of COVID-19 cases by gender, age, and race in Fulton County by Fulton Region

	North Fulton Cities <sup>1</sup> Count (%)	Atlanta Count (%)	South Fulton Cities <sup>2</sup> Count (%)	Unknown City Count (%)	All Fulton Count (%)
<b>Total COVID-19 cases</b>	<b>20172</b>	<b>25399</b>	<b>11369</b>	<b>2852</b>	<b>59792</b>
<b>Gender:</b> Female	10500 (52%)	12844 (51%)	6505 (57%)	1446 (51%)	31295 (52%)
Male	9523 (47%)	12295 (48%)	4797 (42%)	1333 (47%)	27948 (47%)
Unknown*	149 (1%)	260 (1%)	67 (1%)	73 (3%)	549 (1%)
<b>Age:</b> 0-9	784 (4%)	600 (2%)	412 (4%)	83 (3%)	1879 (3%)
10-19	2734 (14%)	1847 (7%)	899 (8%)	205 (7%)	5685 (10%)
20-29	4059 (20%)	7302 (29%)	2080 (18%)	694 (24%)	14135 (24%)
30-39	3070 (15%)	5635 (22%)	2303 (20%)	603 (21%)	11611 (19%)
40-49	3194 (16%)	3396 (13%)	2069 (18%)	444 (16%)	9103 (15%)
50-59	3175 (16%)	2807 (11%)	1658 (15%)	377 (13%)	8017 (13%)
60-69	1652 (8%)	1861 (7%)	1037 (9%)	227 (8%)	4777 (8%)
≥70	1494 (7%)	1883 (7%)	896 (8%)	207 (7%)	4480 (7%)
Unknown*	10 (0%)	68 (0%)	15 (0%)	12 (0%)	105 (0%)
<b>Race:</b> Asian, NH	1137 (6%)	497 (2%)	58 (1%)	73 (3%)	1765 (3%)
Black, NH	2133 (11%)	10598 (42%)	8130 (72%)	981 (34%)	21842 (37%)
White, NH	9001 (45%)	7301 (29%)	662 (6%)	747 (26%)	17711 (30%)
Hispanic	3210 (16%)	1542 (6%)	881 (8%)	276 (10%)	5909 (10%)
Other, NH	1232 (6%)	1224 (5%)	303 (3%)	140 (5%)	2899 (5%)
Unknown*	3459 (17%)	4237 (17%)	1335 (12%)	635 (22%)	9666 (16%)

\*Unknown includes cases not yet interviewed.

### B. Distribution of COVID-19 deaths by gender, age, and race in Fulton County by Fulton Region

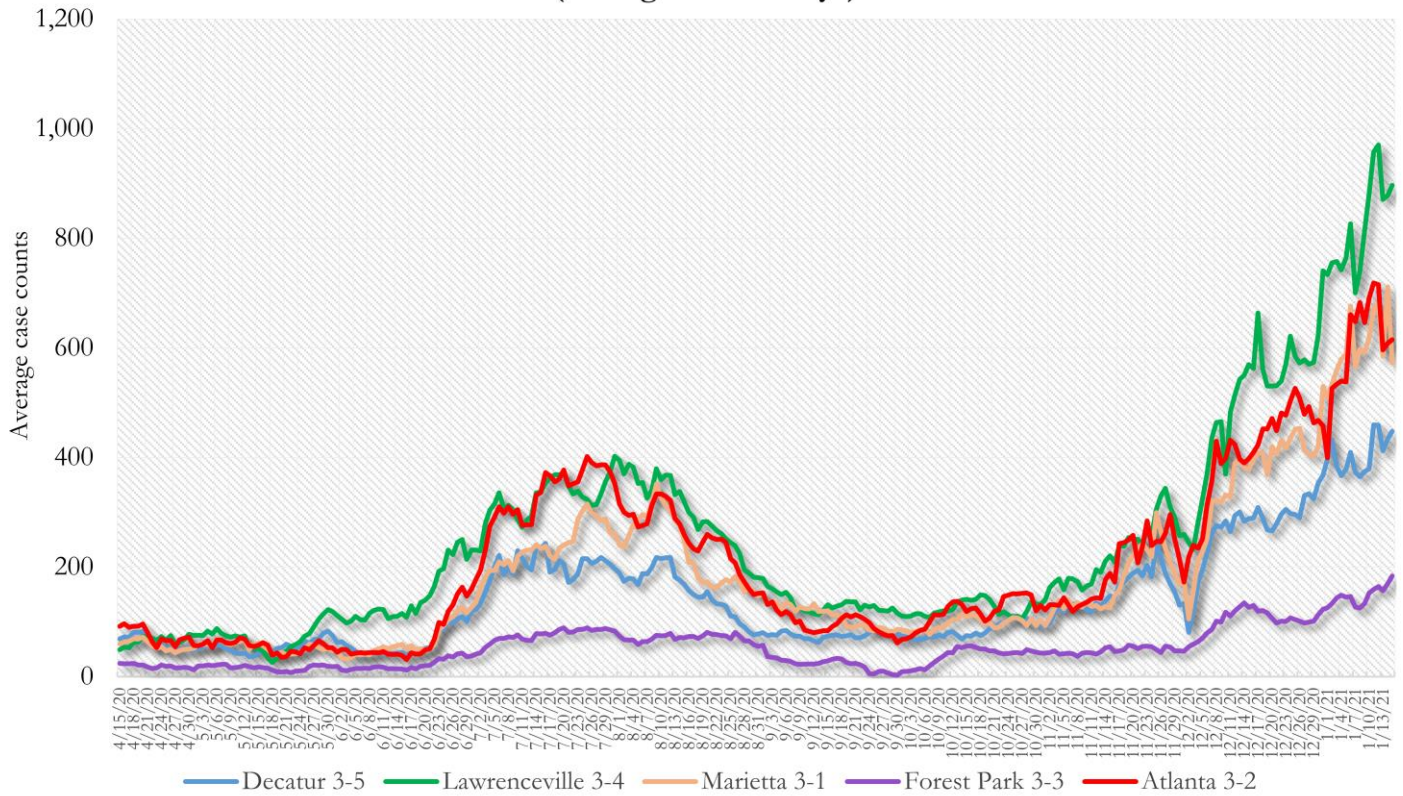
	North Fulton Cities <sup>1</sup> Count (%)	Atlanta Count (%)	South Fulton Cities <sup>2</sup> Count (%)	Unknown City Count (%)	All Fulton Count (%)
<b>Total COVID-19 deaths</b>	<b>178</b>	<b>383</b>	<b>217</b>	<b>30</b>	<b>808</b>
<b>Gender:</b> Female	79 (44%)	174 (45%)	108 (50%)	11 (37%)	372 (46%)
Male	99 (56%)	209 (55%)	109 (50%)	18 (60%)	435 (54%)
Unknown	0	0	0	<10	<10
<b>Age:</b> ≤ 29	<10	<10	<10	0	<10
30-39	<10	<10	<10	<10	14 (2%)
40-49	<10	<10	11 (5%)	<10	28 (3%)
50-59	<10	33 (9%)	27 (12%)	<10	72 (9%)
60-69	21 (12%)	72 (19%)	50 (23%)	<10	146 (18%)
≥70	141 (79%)	258 (67%)	124 (57%)	20 (67%)	543 (67%)
Unknown	0	0	0	0	0
<b>Race:</b> Asian, NH	<10	<10	<10	<10	14 (2%)
Black, NH	28 (16%)	300 (78%)	177 (82%)	11 (37%)	516 (64%)
White, NH	127 (71%)	68 (18%)	30 (14%)	16 (53%)	241 (30%)
Hispanic	15 (8%)	<10	<10	<10	31 (4%)
Other, NH	<10	<10	<10	0	<10
Unknown	0	<10	0	0	<10

<sup>1</sup>Includes all Fulton County cities north of Atlanta (Alpharetta, Johns Creek, Milton, Mountain Park, Roswell, Sandy Springs) <sup>2</sup>Includes all cities south of Atlanta (Chattahoochee Hills, College Park, East Point, Fairburn, Hapeville, Palmetto, South Fulton, Union City). **Note:** All data reported are preliminary and subject to change. This table includes data on only confirmed COVID-19 deaths and is subject to change as GA DPH completes cause of death confirmation processes.



**COVID-19 CASE TRENDS IN FULTON AND SURROUNDING DISTRICTS**

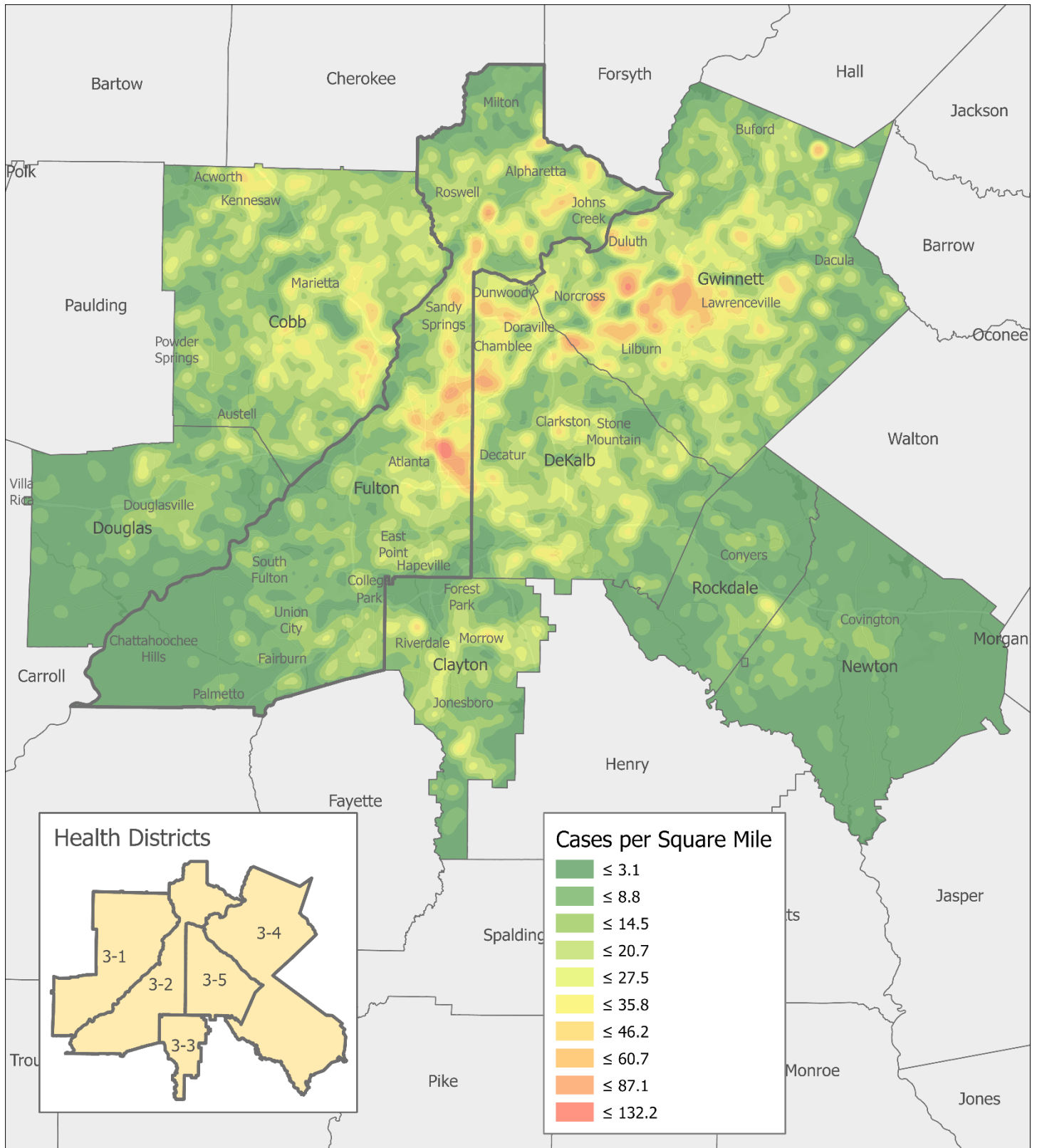
**Fig. 9. Daily Case Counts for Atlanta Metro Districts  
(Averaged over 7 days)**



\*Graph shows the average number of cases calculated from the daily cumulative case counts in the metro Atlanta districts. Increases in daily cumulative case counts may include cases diagnosed earlier during the pandemic but were only recently reported to the state as cases diagnosed belonging to these districts. Delays in data reporting may cause the trend line to appear as decreasing.

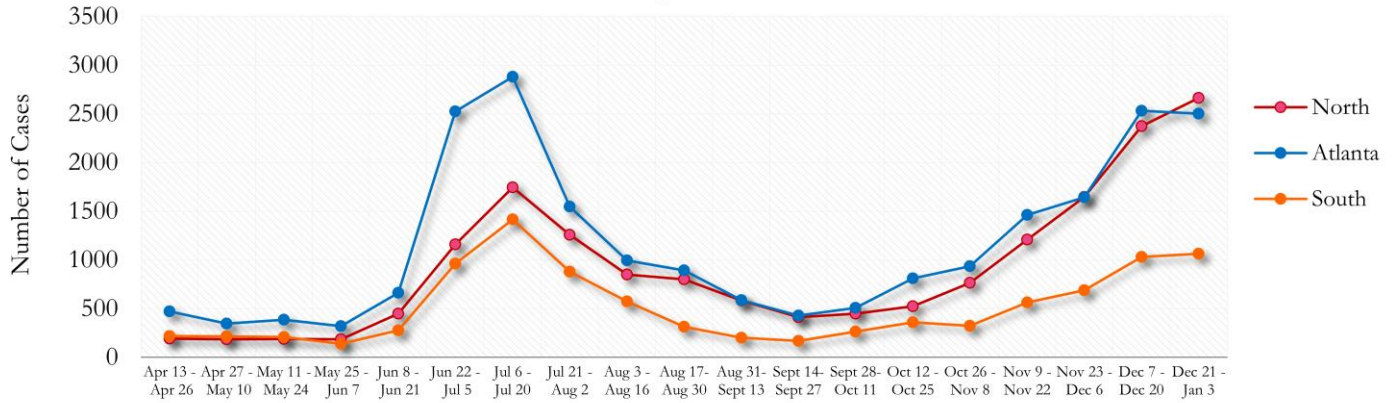


Fig. 10. COVID-19 Cases in Fulton County and Surrounding Districts (Dec 26, 2020– Jan 8, 2021)



**TRENDS IN COVID-19 CASES AMONG DEMOGRAPHIC GROUPS (14 DAY PERIODS)**

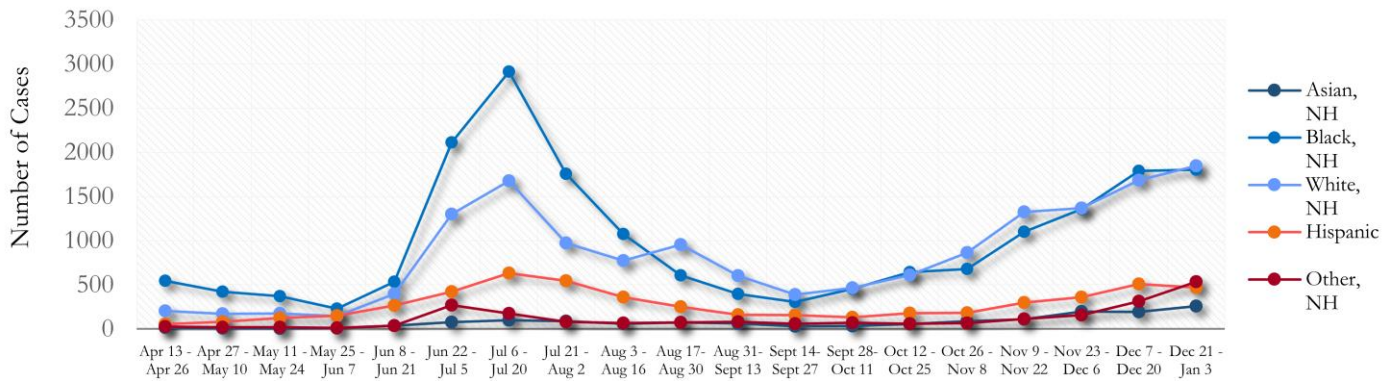
**Fig. 11. Trends in Geographic distribution of COVID-19 Cases in Fulton County by 14-day periods**



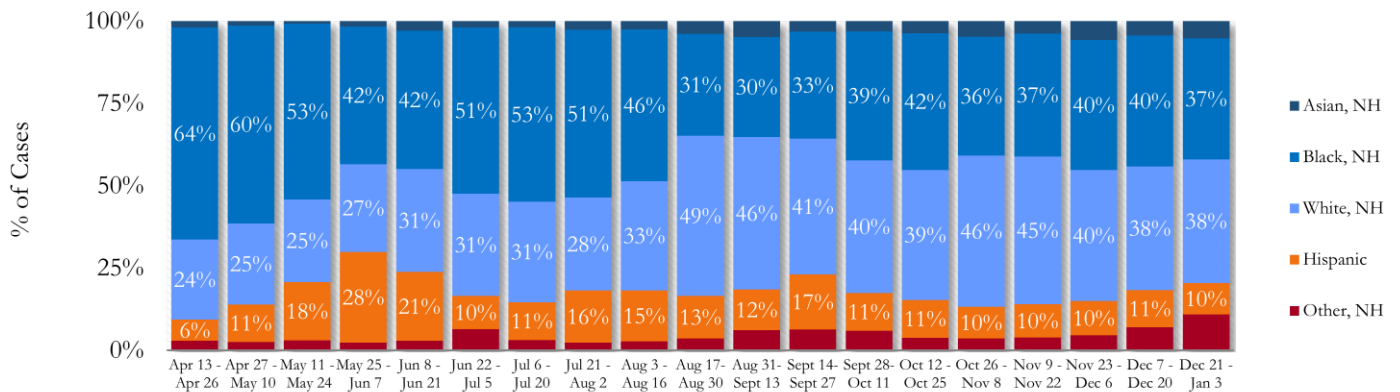
\*North - Includes all Fulton cities north of Atlanta (Alpharetta, Johns Creek, Milton, Mountain Park, Roswell, Sandy Springs)

\*South - Includes all Fulton cities south of Atlanta (College Park, Chattahoochee Hills, East Point, Fairburn, Hapeville, Palmetto, South Fulton, and Union City)

**Fig. 12. Trends in Racial Distribution of COVID-19 Cases in Fulton County by 14-day periods**

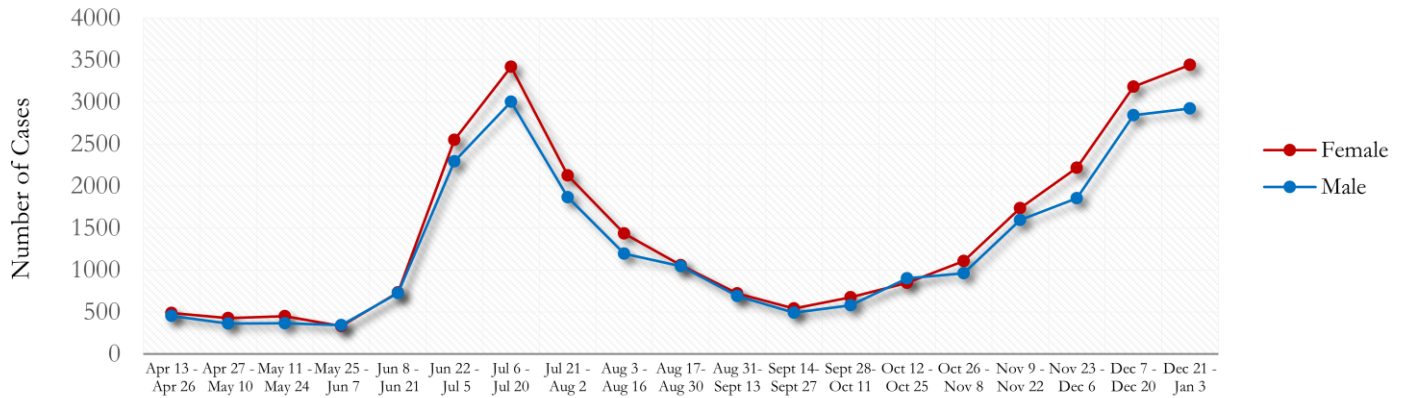


**Fig. 13. Racial Distribution of COVID-19 Cases in Fulton County by 14-day periods**

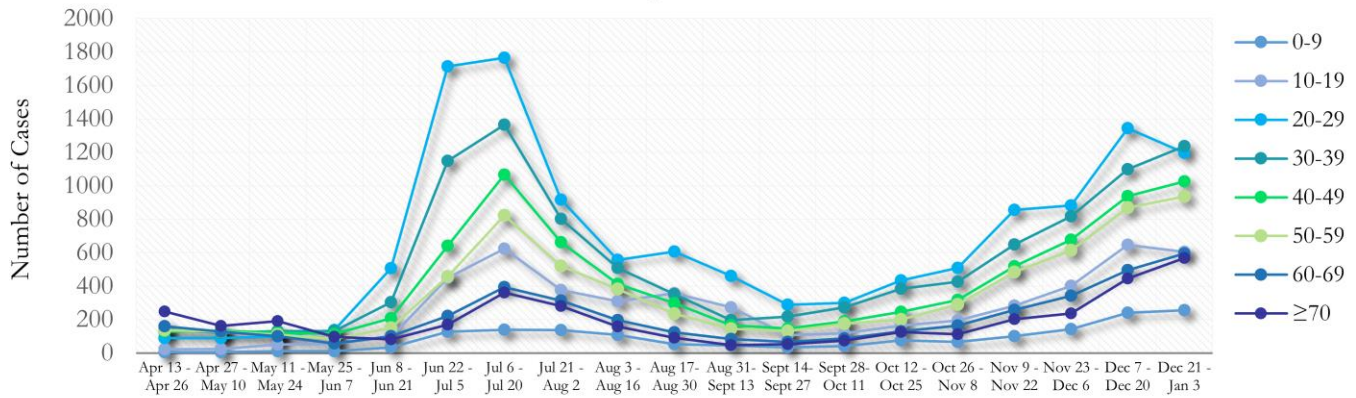


About 16% of COVID cases are missing data on patient race and ethnicity. The majority of new cases in the past two weeks were Black, NH (37%) and White, NH (38%).

**Fig. 14. Trends in Gender Distribution of COVID-19 Cases in Fulton County by 14-day periods**

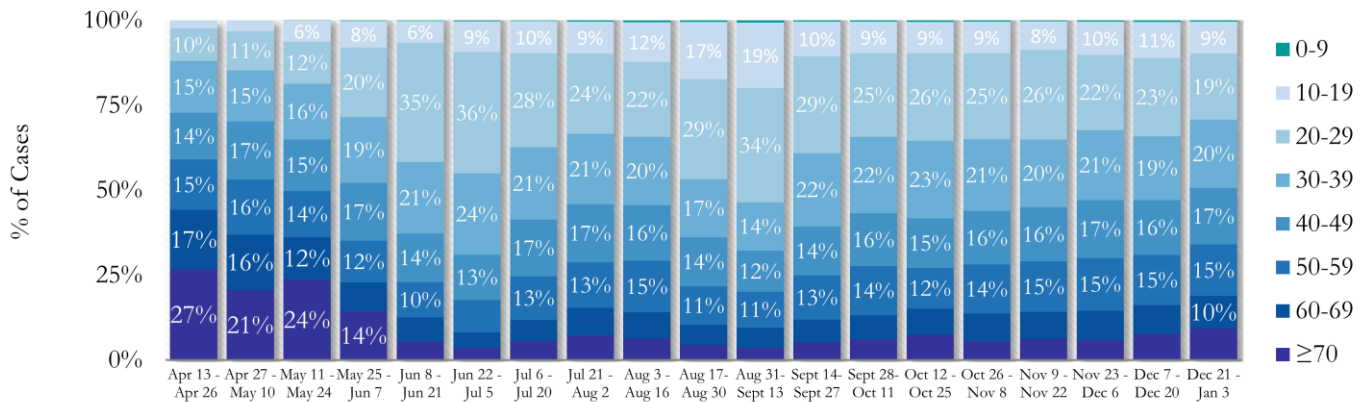


**Fig. 15. Trends in Age Distribution of COVID-19 Cases in Fulton County by 14-day periods**



Earlier (March-May 2020) large proportions of reported cases were among persons aged 60 and older. In the most recent two weeks, 30-39 year olds accounted for the highest number of new cases among all age groups, followed by 20-29 year olds.

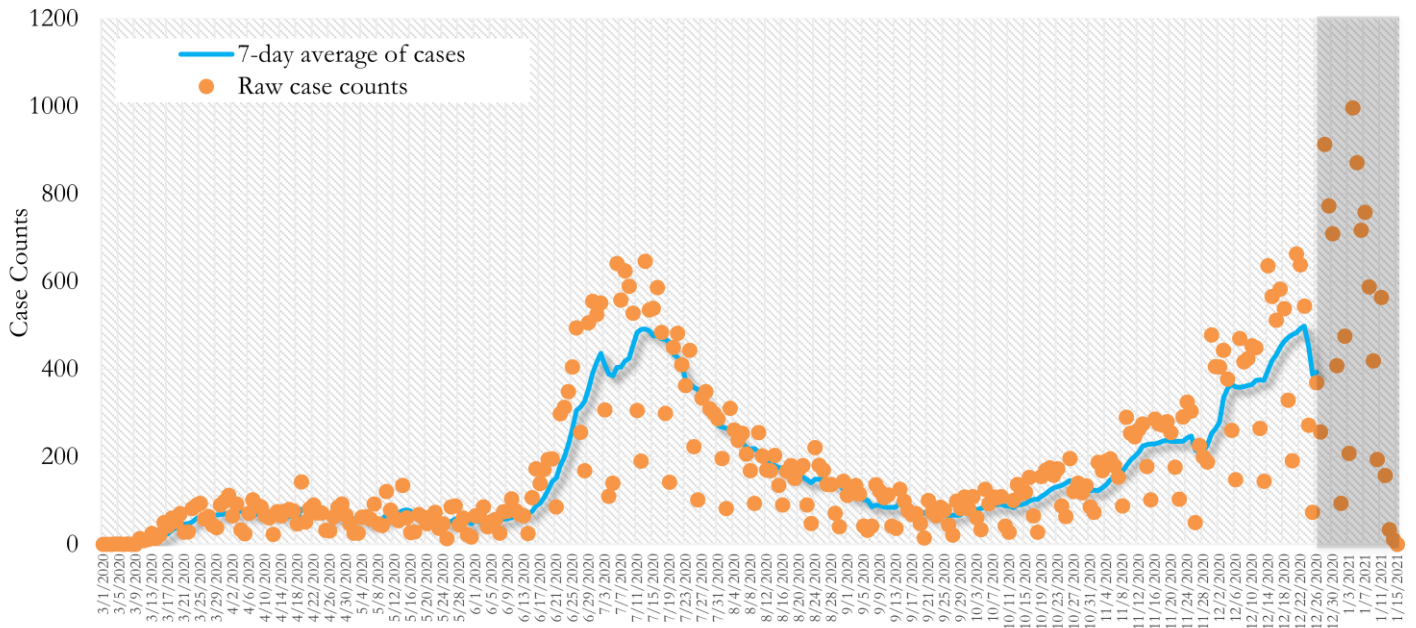
**Fig. 16. Age Distribution of COVID-19 Cases in Fulton County by 14-day periods**





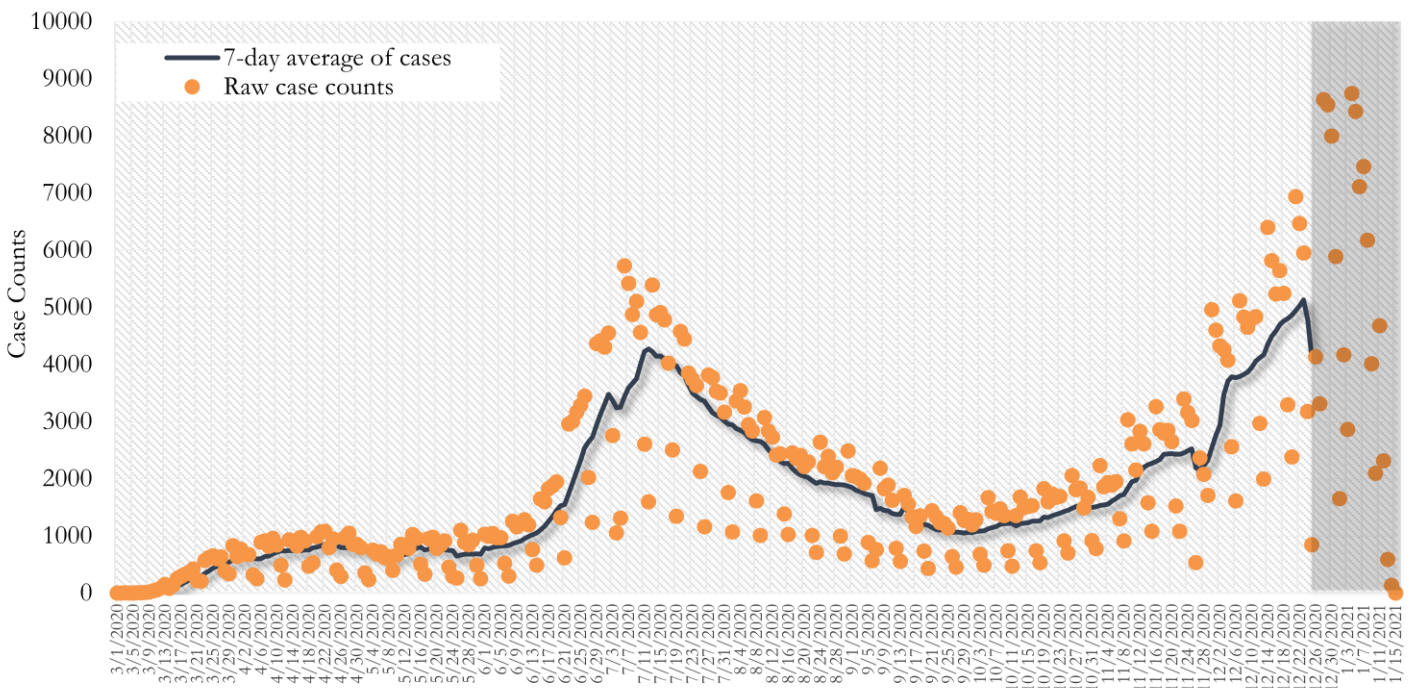
**TRENDS IN COVID-19 CASES, HOSPITALIZATIONS AND DEATHS (7-DAY MOVING AVE.)**

**Fig. 17. New COVID-19 Cases in Fulton County Daily (Averaged over 7 days)**



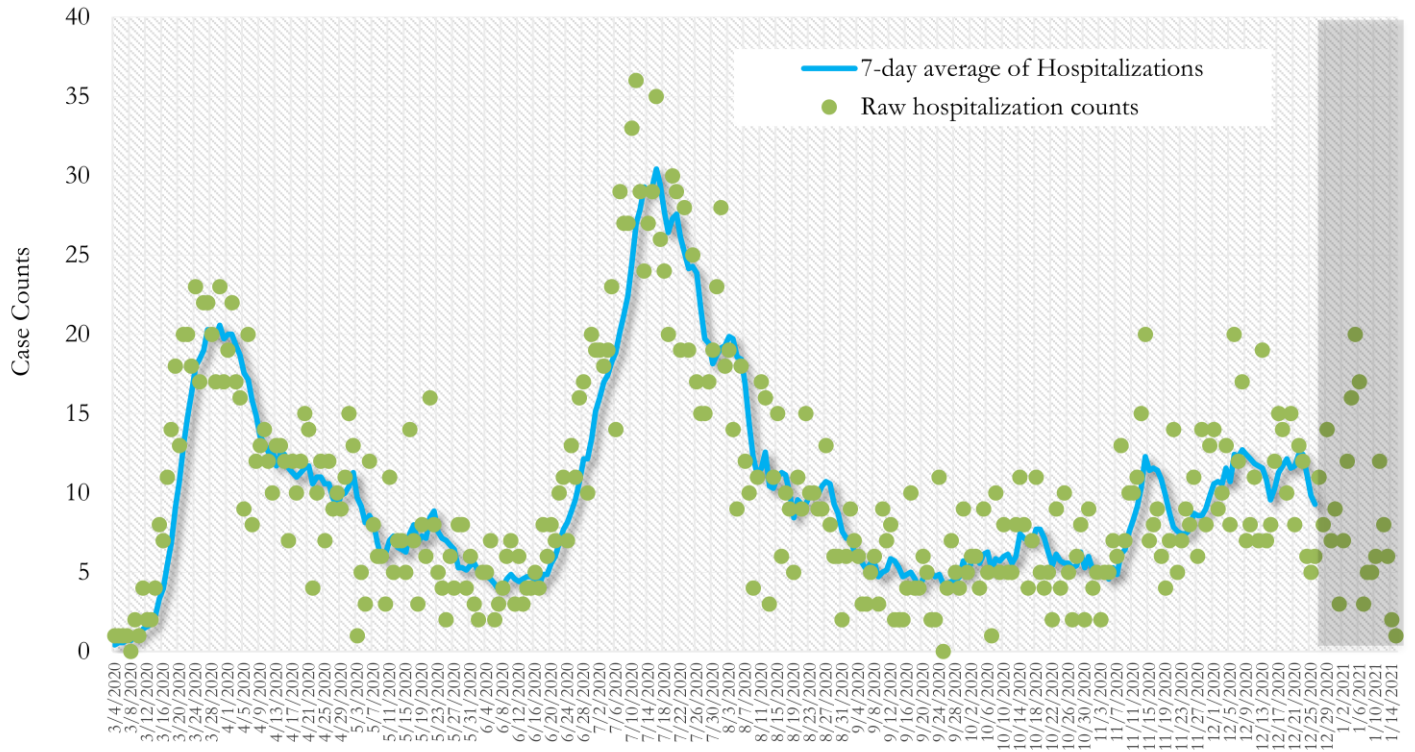
\*Date of collection of first positive sample used (report creation date used where sample collection date is missing). Graph above reflects the trend in COVID-19 diagnosis. Due to the high volume of testing in recent weeks, there have been delays in reporting lab results. Thus, the trend is subject to change as more lab results get added to the state surveillance database.

**Fig. 18. New COVID-19 Cases in Georgia State Daily (Averaged over 7 days)**



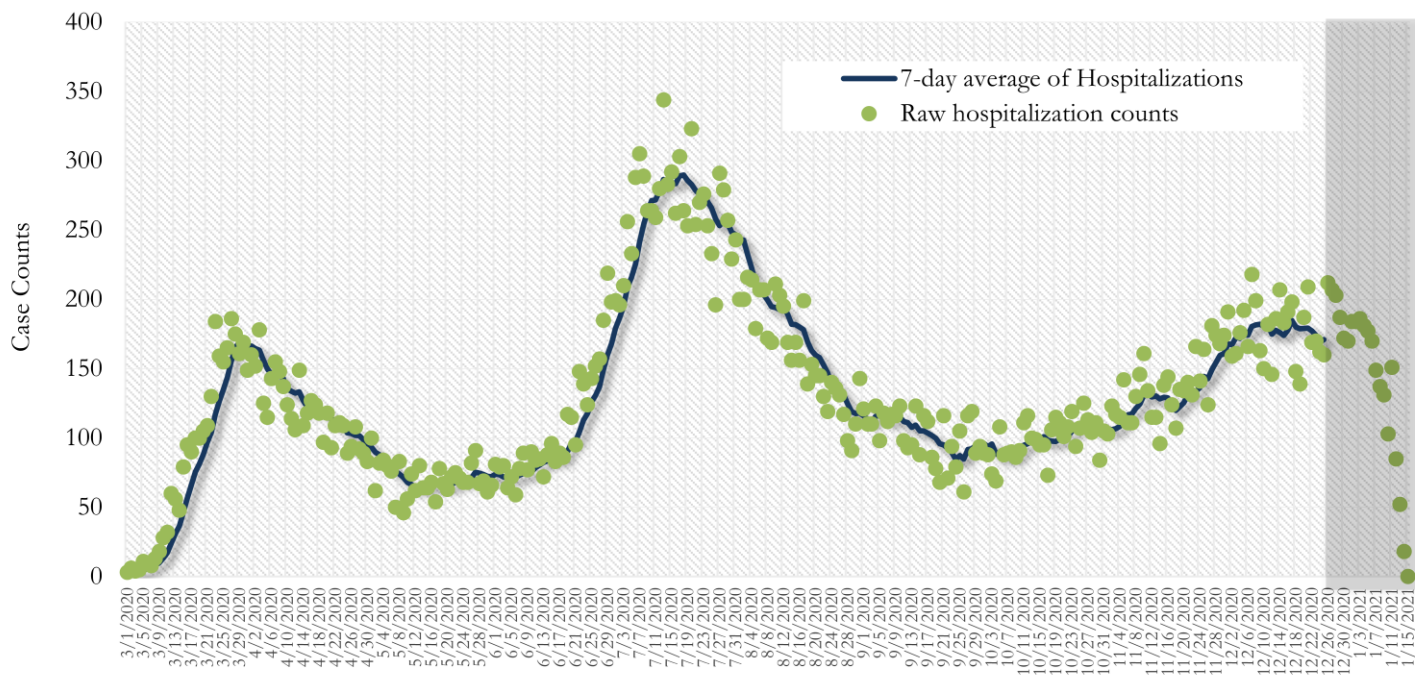
\*Date of collection of first positive sample used (report creation date used where sample collection date is missing). Graph above reflects the trend in COVID-19 diagnosis. Due to the high volume of testing in recent weeks, there have been delays in reporting lab results. Thus, the trend is subject to change as more lab results get added to the state surveillance database.

**Fig. 19. COVID-19 Hospitalizations in Fulton County Daily (Averaged over 7 days)**



\*Reported date of hospital admission used. Graph above reflects the trend in COVID-19 hospitalizations. Due to the high volume of new cases being added daily, there have been delays in reporting hospitalization data. Thus, the trend is likely to change as more hospitalization data is reported in the state surveillance database.

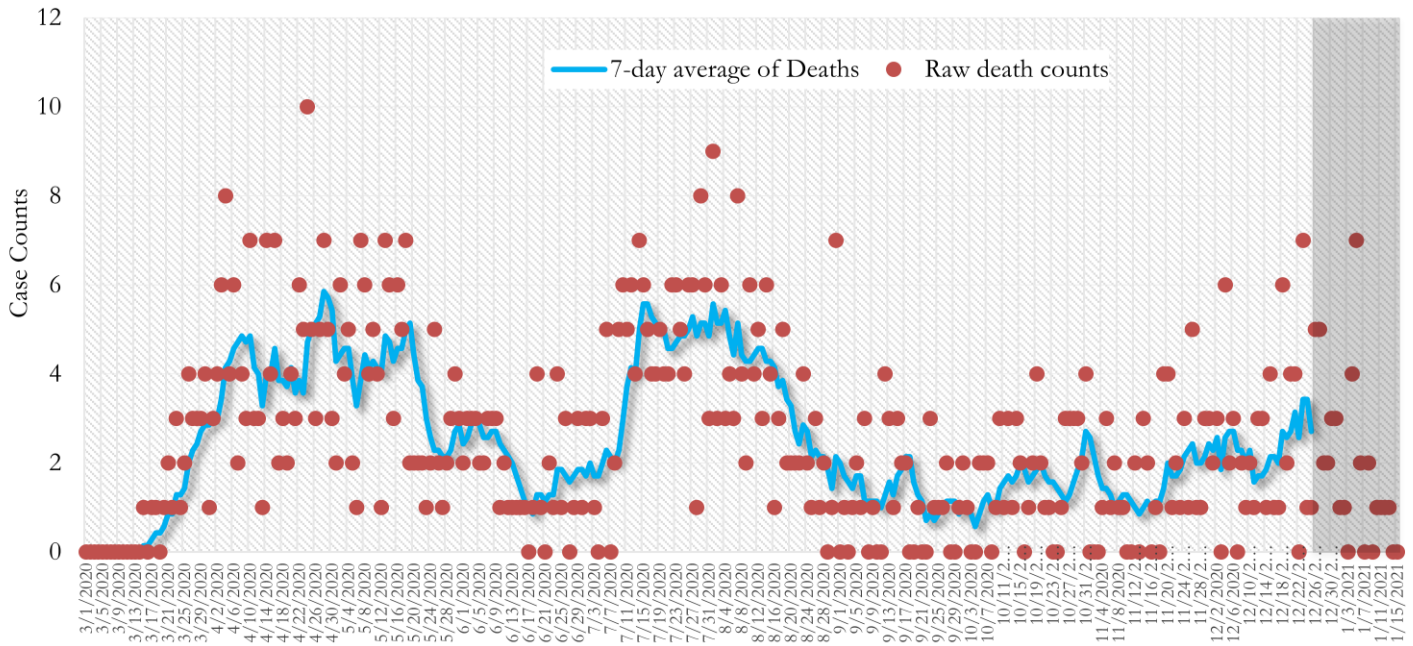
**Fig. 20. COVID-19 Hospitalizations in Georgia State Daily (Averaged over 7 days)**



\*Reported date of hospital admission used. Graph above reflects the trend in COVID-19 hospitalizations. Due to the high volume of new cases being added daily, there have been delays in reporting hospitalization data. Thus, the trend is likely to change as more hospitalization data is reported in the state surveillance database.

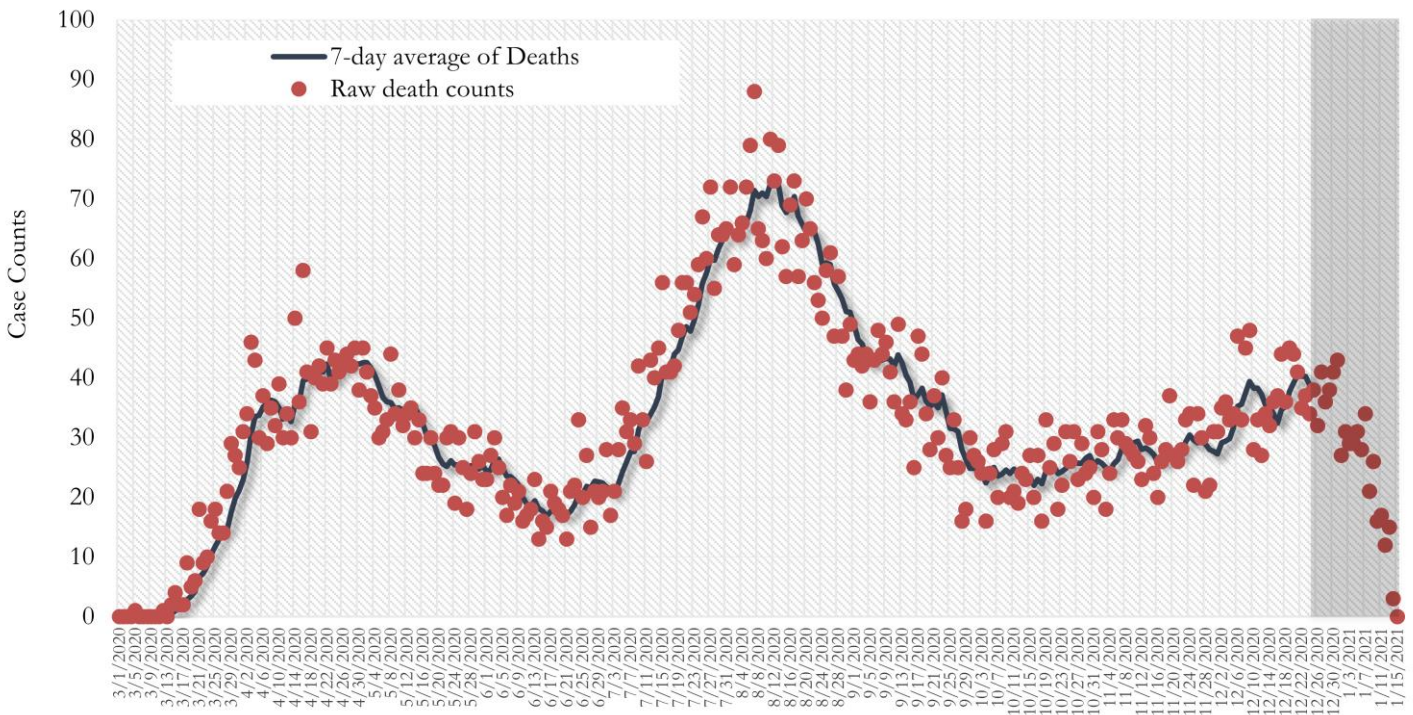


**Fig. 21. COVID-19 Deaths in Fulton County Daily (Averaged over 7 days)**



\* Reported date of death used. Graph above reflects the trend in deaths attributed to COVID-19. The trend is likely to change as more data on deaths among persons with COVID-19 is reported in the state surveillance database.

**Fig. 22. COVID-19 Deaths in Georgia State Daily (Averaged over 7 days)**

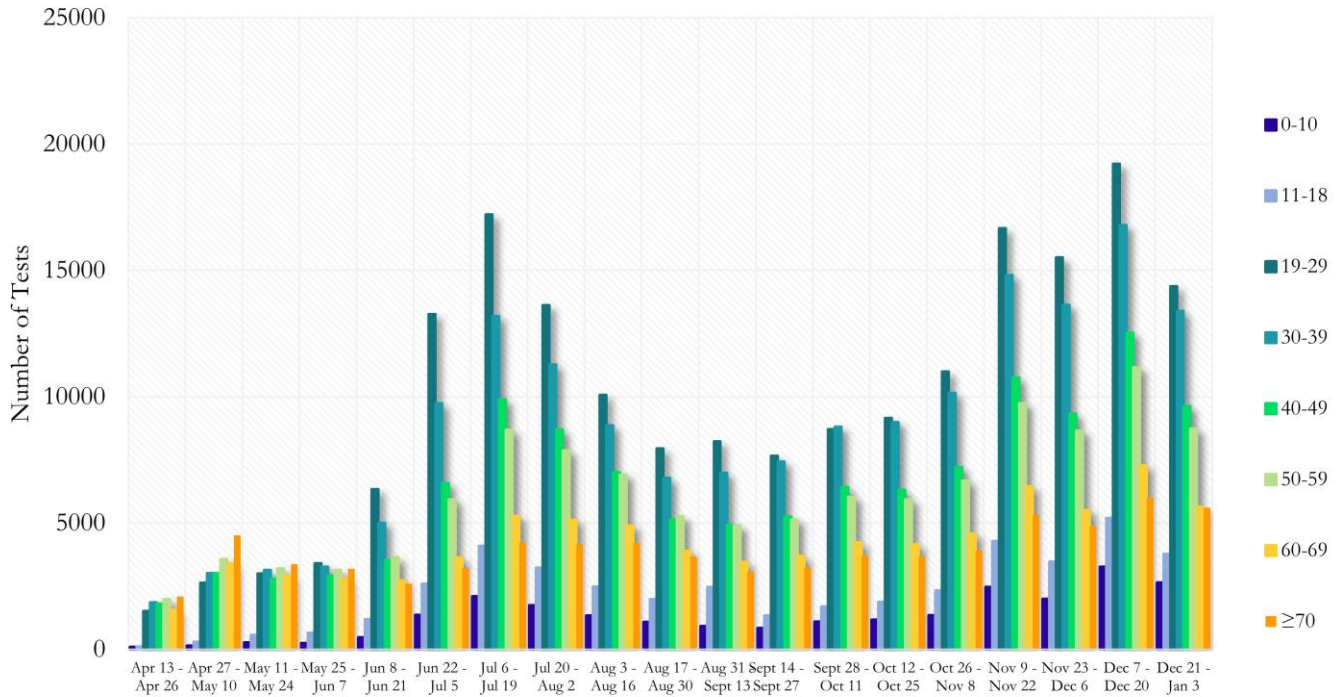


\* Reported date of death used. Graph above reflects the trend in deaths attributed to COVID-19. The trend is likely to change as more data on deaths among persons with COVID-19 is reported in the state surveillance database.



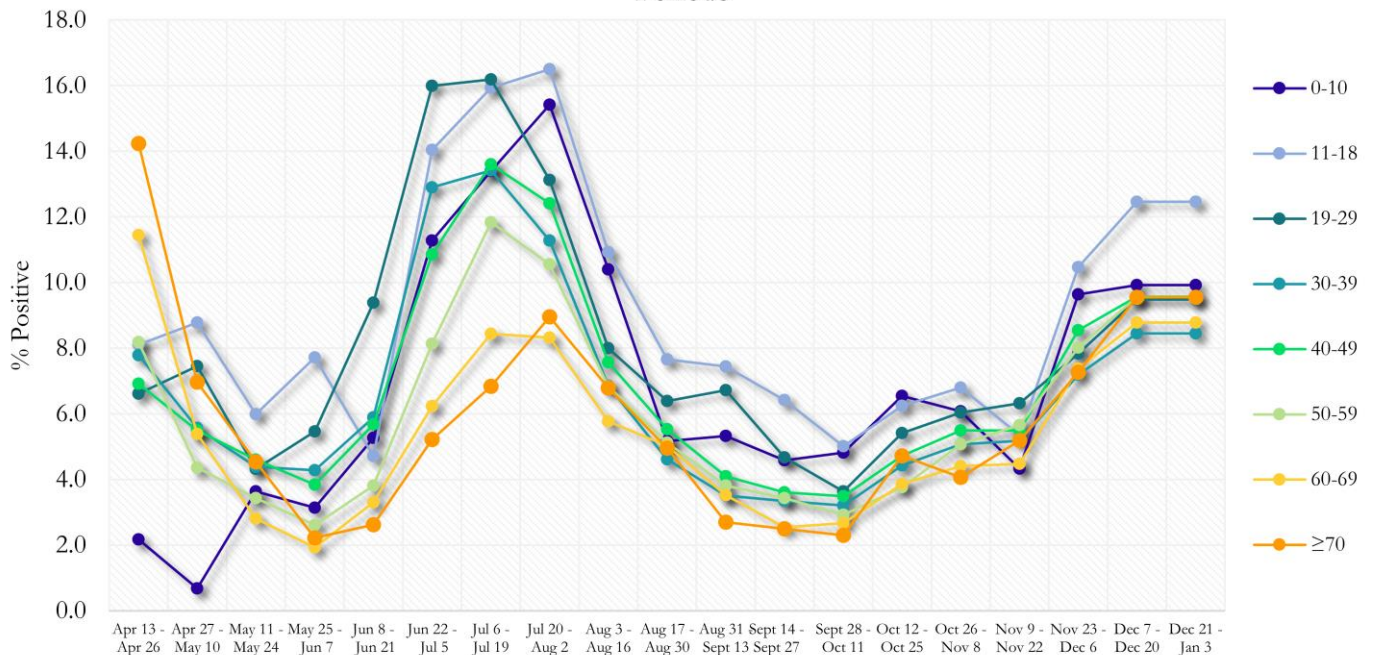
**COVID-19 TESTING AND POSITIVITY IN FULTON COUNTY BY AGE AND RACE**

**Fig. 23. COVID-19 Tests by Age in Fulton County by 14-day Periods**



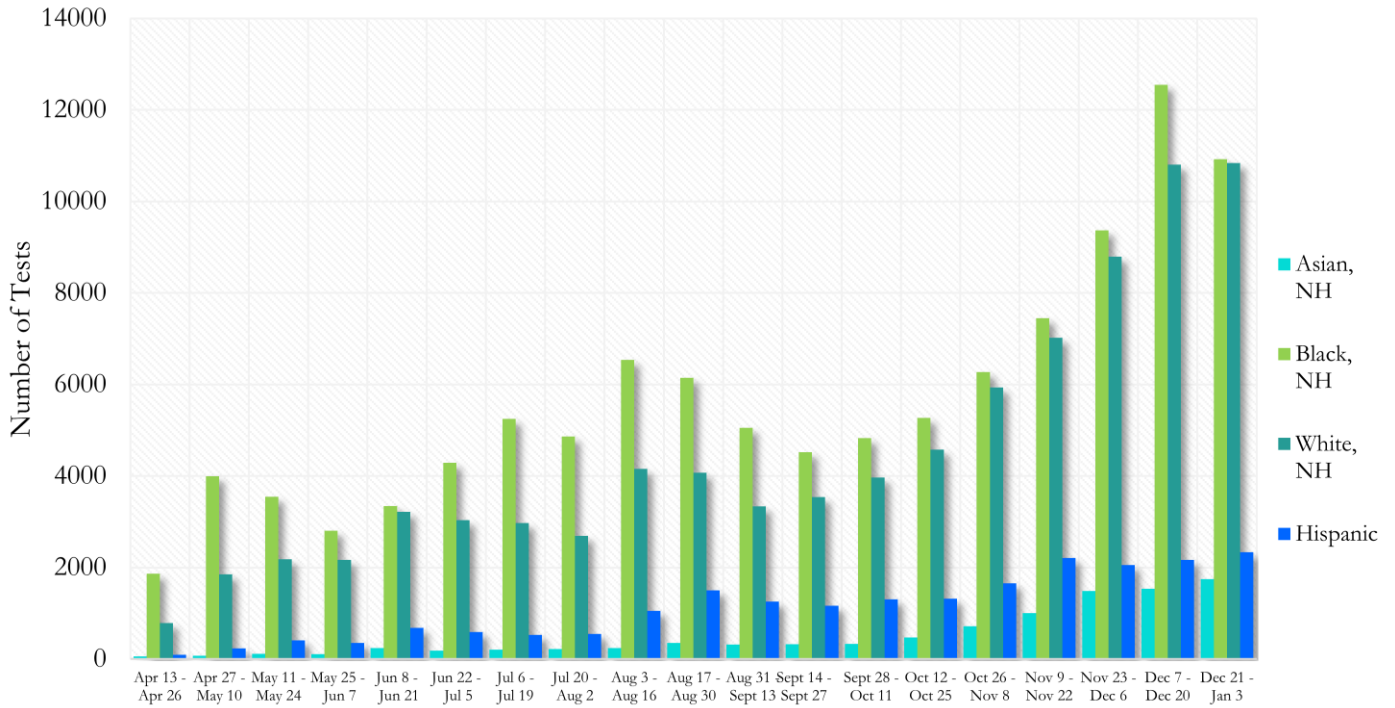
\*Data on Polymerase Chain Reaction (PCR) tests only included.

**Fig. 24. Percent Positive COVID-19 Tests by Age Group in Fulton County by 14-day Periods**



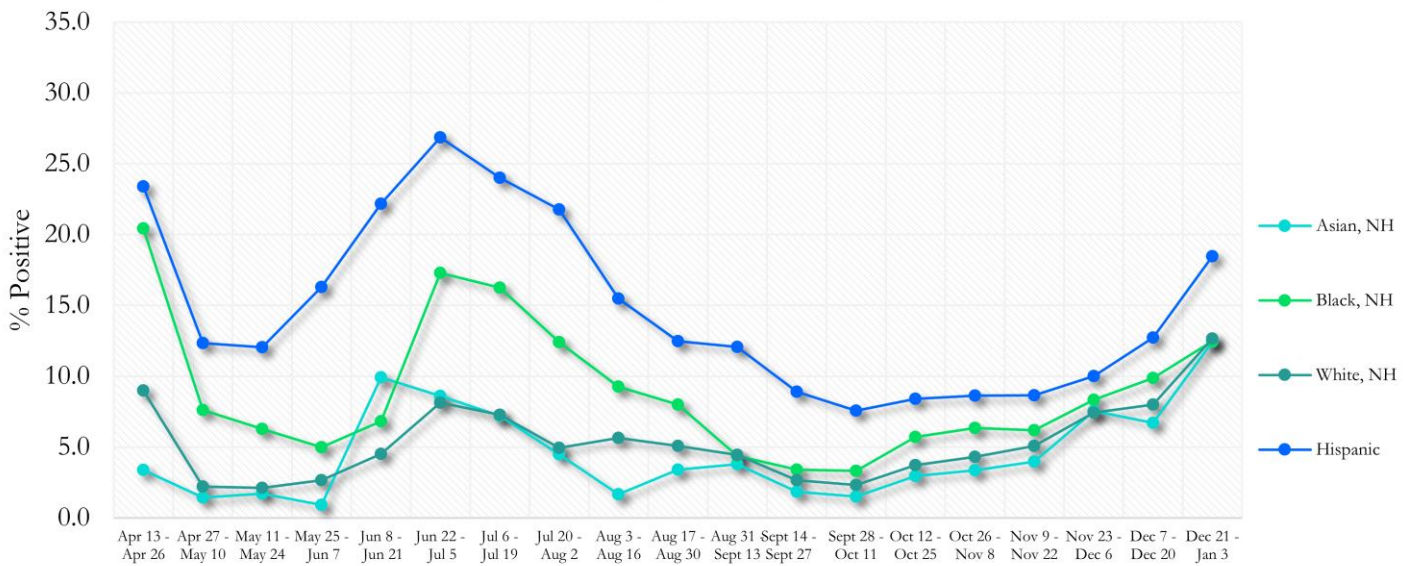
\*Data on Polymerase Chain Reaction (PCR) tests only included.

**Fig. 25. COVID-19 Tests by Race and Ethnicity in Fulton County by 14-day Periods**



\*Data on Polymerase Chain Reaction (PCR) tests only included.

**Fig. 26. Percent Positive COVID-19 Tests by Race and Ethnicity in Fulton County by 14-day Periods**



\*Data on Polymerase Chain Reaction (PCR) tests only included.

## COVID-19 CASE COUNTS BY ZIP CODE

	Prior (1/12/21)	Current Total (1/15/21)		New Cases (Period: 12/12/20 – 1/8/21) <sup>1</sup>		
	Count	Count	%	Recent 14 d. (Dec 26- Jan 8)	Prior 14 d. (Dec 12– Dec 25)	% change <sup>2</sup>
<b>All Fulton</b>	58191	59792	100%	8278	6413	↑ 29.1%
30004	2440	2518	4.2%	458	337	↑ 35.9%
30005	1495	1534	2.6%	280	236	↑ 18.6%
30009	1084	1119	1.9%	175	118	↑ 48.3%
30022	3238	3353	0.8%	568	462	↑ 22.9%
30023	15	15	<0.1%	<10	<10	-
30024	55	56	<0.1%	<10	<10	-
30075	2352	2407	4.0%	390	276	↑ 41.3%
30076	2409	2483	4.2%	429	265	↑ 61.9%
30080	<10	<10	<0.1%	0	0	-
30097	947	980	1.6%	194	139	↑ 39.6%
30098	-	-	-	0	0	-
30135	<10	<10	<0.1%	<10	0	-
30138	<10	<10	<0.1%	0	0	-
30139	-	-	-	0	0	-
30213	2185	2252	3.8%	321	214	↑ 50.0%
30268	415	433	0.7%	80	60	↑ 33.3%
30291	1463	1515	2.5%	182	131	↑ 38.9%
30296	163	178	0.3%	30	23	↑ 30.4%
30301	22	22	<0.1%	<10	<10	-
30303	531	539	0.9%	35	33	↑ 6.1%
30305	1874	1922	3.2%	282	230	↑ 22.6%
30306	798	821	1.4%	106	109	↓ 2.8%
30307	385	390	0.7%	42	45	↓ 6.7%
30308	1213	1238	2.1%	142	123	↑ 15.4%
30309	1820	1869	3.1%	247	206	↑ 19.9%
30310	1389	1432	2.4%	201	127	↑ 58.3%
30311	1407	1475	2.5%	175	105	↑ 66.7%
30312	1591	1626	2.7%	177	158	↑ 12.0%
30313	451	463	0.8%	22	30	↓ 26.7%
30314	952	975	1.6%	108	78	↑ 38.5%
30315	1771	1834	3.1%	211	213	↓ 0.9%
30316	694	710	1.2%	90	65	↑ 38.5%
30318	3344	3455	5.8%	418	367	↑ 13.9%
30319	368	382	0.6%	68	40	↑ 70.0%
30321	15	16	<0.1%	<10	0	-
30324	1665	1692	2.8%	156	141	↑ 10.6%
30326	553	574	1.0%	60	61	↓ 1.6%
30327	1480	1523	2.5%	272	182	↑ 49.5%
30328	2109	2156	3.6%	355	278	↑ 27.7%
30331	3157	3245	5.4%	401	335	↑ 19.7%
30334	14	14	<0.1%	<10	0	-
30336	138	139	0.2%	10	12	↓ 16.7%
30337	594	604	1.0%	63	45	↑ 40.0%
30338	135	136	0.2%	14	<10	↑ 100.0%
30339	345	349	0.6%	50	13	↑ 284.6%
30340	35	35	<0.1%	0	0	-
30341	35	35	<0.1%	0	<10	↓ 100.0%
30342	2397	2460	4.1%	357	267	↑ 33.7%
30344	1709	1750	2.9%	223	155	↑ 43.9%
30345	25	27	<0.1%	0	0	-



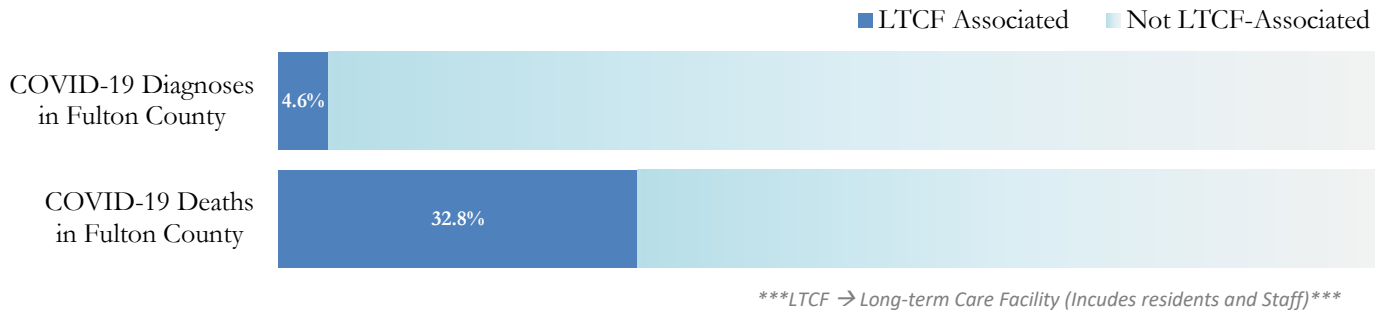
30349	3247	3324	5.6%	365	316	↑ 15.5%
30350	1673	1727	2.9%	293	248	↑ 18.1%
30354	802	831	1.4%	112	70	↑ 60.0%
30358	<10	<10	<0.1%	<10	<10	-
30363	148	155	0.3%	17	14	↑ 21.4%
30374	40	40	<0.1%	<10	<10	-
30606	<10	<10	<0.1%	0	0	-
31131	<10	<10	<0.1%	0	<10	↓ 100.0%
31150	<10	<10	<0.1%	0	<10	↓ 100.0%
Unknown	2575	932	1.6%	80	60	-

<sup>1</sup>**New cases:** Cases diagnosed in most recent 28 days (based on reported dates of positive sample collection). To allow for lag in reporting results of new diagnoses from samples collected in the most recent week, data used for incident diagnoses analyses were moved back by one week. <sup>2</sup>**Percent change:** These reflect the percentage increase or decrease of new diagnoses between the 14 days preceding the past 7 days and the 14 days preceding that. Changes in ZIP codes with less than 10 cases in both 2 week intervals are not reported\*\*Data cleaning (either during case interviews or address geo-coding) may lead to reassignment of few cases from one territory to another based on their corrected addresses. These may appear as “decreases” when compared to the previous day’s count. These do not reflect errors in the data collection or analysis process but only reflect the minor day-to-day fluctuations in case counts that arise in an evolving public health database like COVID’s. **Note:** Sharp increases in territorial COVID case counts often reflect new cases diagnosed at long term care facilities located in those territories during facility-wide /mass screening events **All data reported are preliminary and subject to change.**

## COVID-19 IN LONG-TERM CARE FACILITIES IN FULTON COUNTY

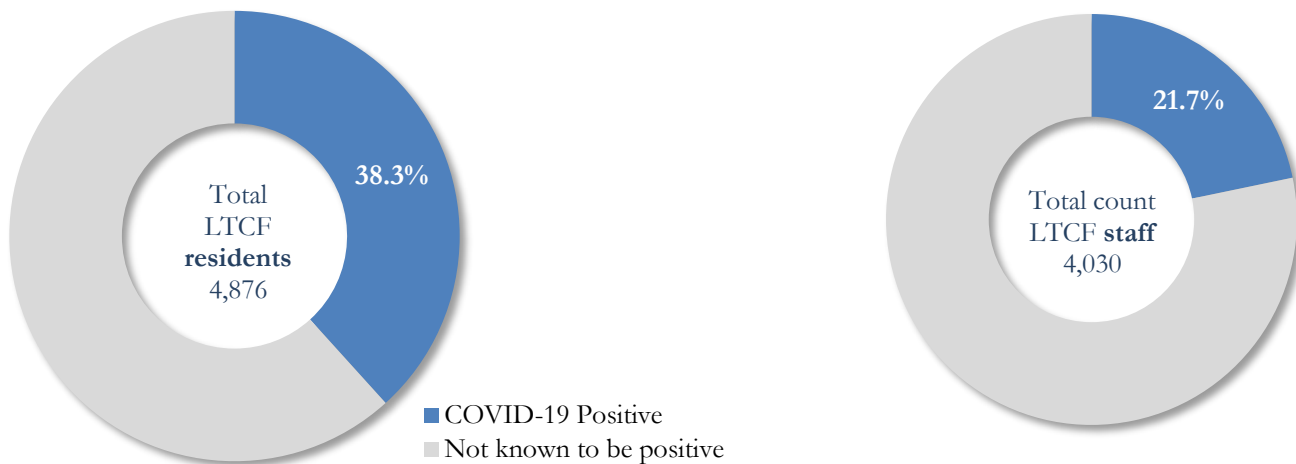
Older persons (aged 65 years and older) and persons who live in nursing homes or other long-term care facilities seem to be at higher risk for developing more serious complications from COVID-19. Extra precautions are recommended for individuals within this risk groups – Centers for Disease Control and Prevention (CDC 2020) <https://www.cdc.gov/coronavirus/2019-ncov/need-extra-precautions/people-at-higher-risk.html>

Fig. 27. COVID-19 Diagnoses and Deaths in Fulton County Associated with Long-Term Care Facilities



## COVID-19 POSITIVITY:

Fig. 28. COVID-19 Positivity at 64 reporting Long-Term Care Facilities (LTCF) in Fulton County



COVID-19 Cases, Hospitalizations, and Deaths among 64 reporting Long-Term Care Facilities in Fulton County

	LTCF Residents (n=4,876)			LTCF Staff (n=4,030)		
	Cases	Hospitalizations	Deaths	Cases	Hospitalizations	Deaths
Average (count per fac.) <sup>1</sup>	29	5	4	13	1	<0.1
Median (count per fac.) <sup>1</sup>	11	3	1	9	0	0
Lowest counts	0	0	0	0	0	0
Highest counts	143	48	30	70	8	2
Total Count	1867 (38.3%) <sup>a</sup>	337 (18.1%) <sup>b</sup>	260 (13.9%) <sup>b</sup>	876 (21.7%) <sup>a</sup>	33 (3.8%) <sup>b</sup>	5 (<1.0%) <sup>b</sup>

<sup>a</sup> Percentage shown reflects proportion of total residents/staff tested who were positive (i.e. COVID-19 Positivity). | <sup>b</sup> Percentages shown are proportions of persons residents/staff diagnosed with COVID-19 who were hospitalized or died after diagnoses.