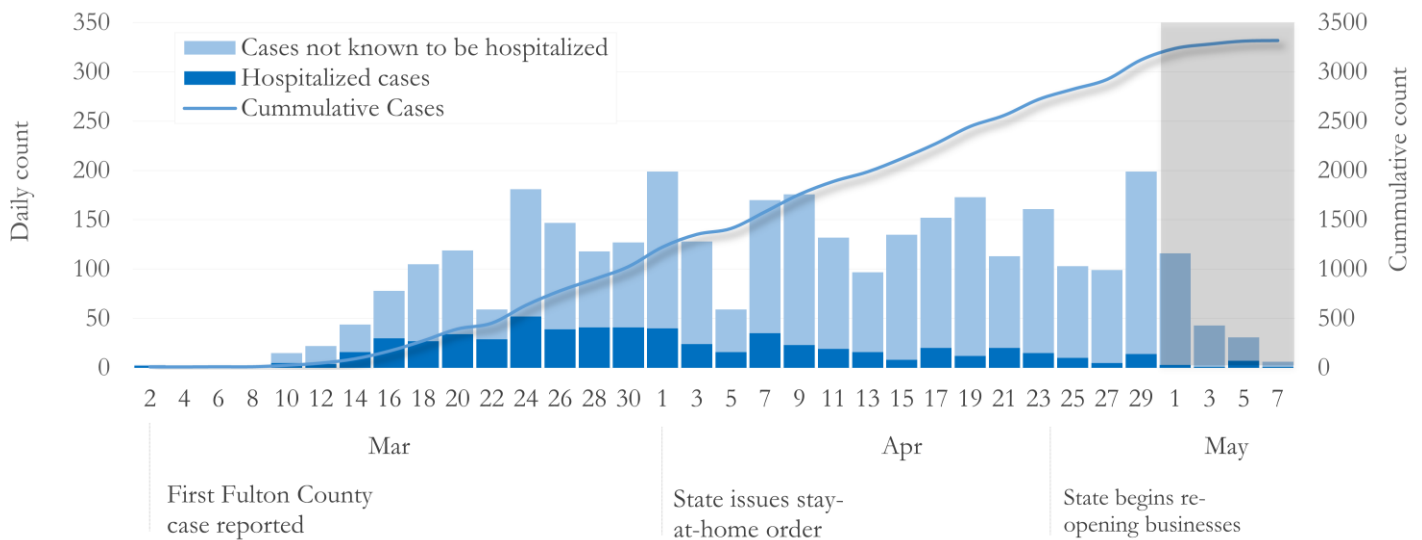


SUMMARY

- As of May 8, 2020, Fulton County has recorded **3,321** cases of the 2019 novel coronavirus (COVID-19) and **137** deaths.
- The central part of the county (Atlanta metro) accounted for 46% of these diagnoses while northern and southern parts together accounted for 41% of the cases.
- By city, the cumulative diagnoses rates (preliminary) have ranged from 122.2 per 100,000 population (Alpharetta) to 477.1 per 100,000 population (Union City).
- Among all persons diagnosed with COVID-19 in Fulton County, 18.4% have needed hospitalization and 4.1% have died.

Daily and Cummulative COVID-19 diagnoses in Fulton County, GA (5/08/20)



*Counts shown reflect the number of cases diagnosed as at 5/08/20 using the date of first positive sample collection. Where date of sample collection was not available or missing, the date of report creation in GA SENDSS was used instead.
 **Note: All data reported are preliminary and subject to change. Delays in data reporting may cause changes in data counts, particularly in the shaded portion.

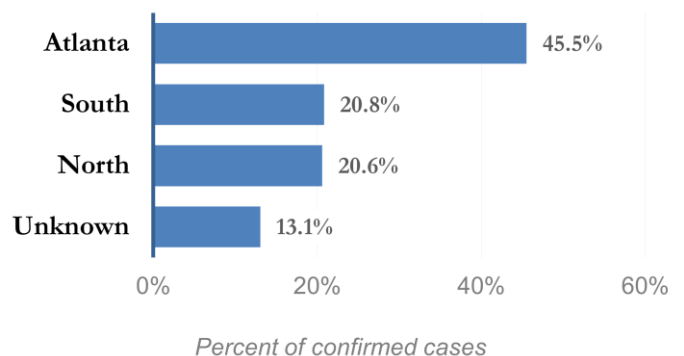
DISTRIBUTION OF COVID-19 DIAGNOSES BY REGION

Fulton Region	% of total cases in Fulton county
Atlanta	45.5%
North ¹	20.6%
South ²	20.8%
Unincorporated/Unknown	13.1%

¹Includes all Fulton County cities north of Atlanta metro (Alpharetta, Milton, Johns Creek, Roswell, Sandy Springs, Mountain Park)

²Includes all cities south of Atlanta (College Park, Chattahoochee Hills, East Point, Hapeville, Palmetto, South Fulton, Fairburn, Union City)

Distribution of COVID 19 cases by Region (5/08/20)

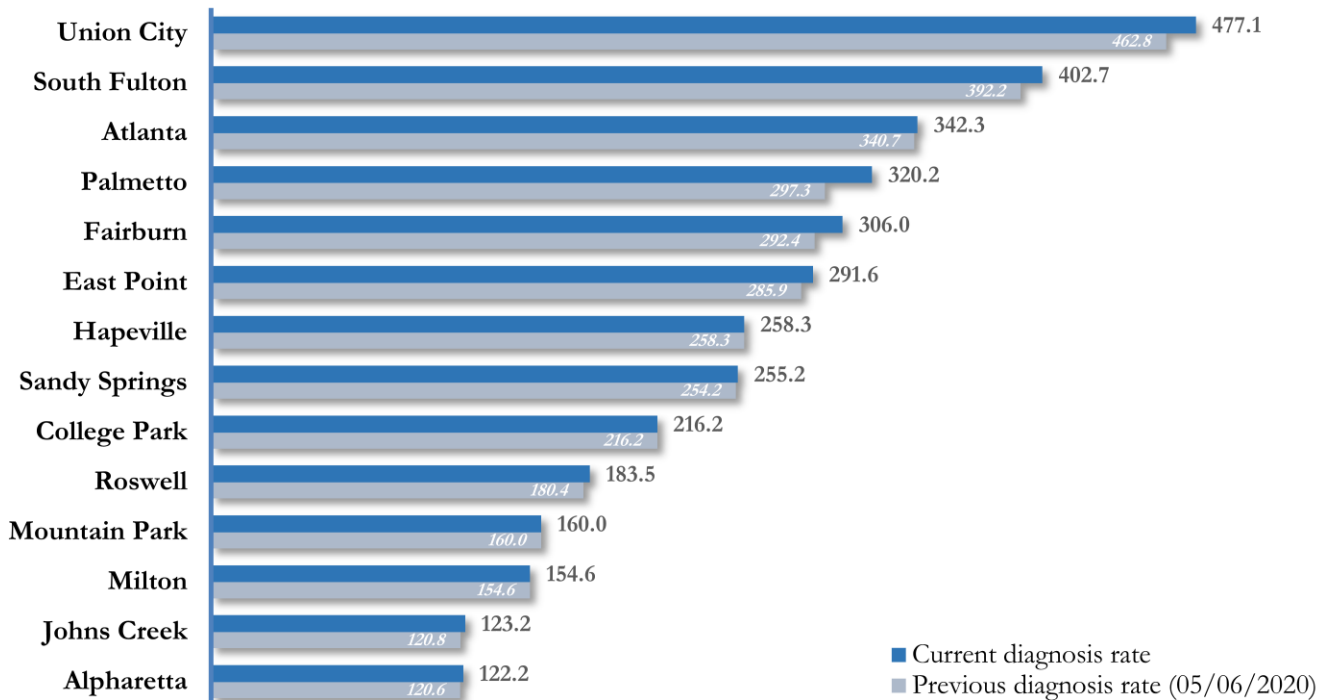


COVID-19 CASE COUNTS AND RATES BY CITY

	Previous Count (5/06/2020)	Current Count (5/08/20)	Percent of Current Total	% Change	Cumulative Diagnoses Rate (per 100,000 population) *
Atlanta	1503	1510	45.5%	0.5%	342.3
South Fulton	373	383	11.5%	2.7%	402.7
Sandy Springs	268	269	8.1%	0.4%	255.2
Roswell	170	173	5.2%	1.8%	183.5
East Point	100	102	3.1%	2.0%	291.6
Johns Creek	101	103	3.1%	2.0%	123.2
Union City	97	100	3.0%	3.1%	477.1
Alpharetta	78	79	2.4%	1.3%	122.2
Milton	59	59	1.8%	0.0%	154.6
Fairburn	43	45	1.4%	4.7%	306.0
College Park	30	30	0.9%	0.0%	216.2
Palmetto	13	14	0.4%	7.7%	320.2
Hapeville	17	17	0.5%	0.0%	258.3
Mountain Park	<10	<10	0.0%	0.0%	160.0
Unknown	426	433	13.1%	-	-

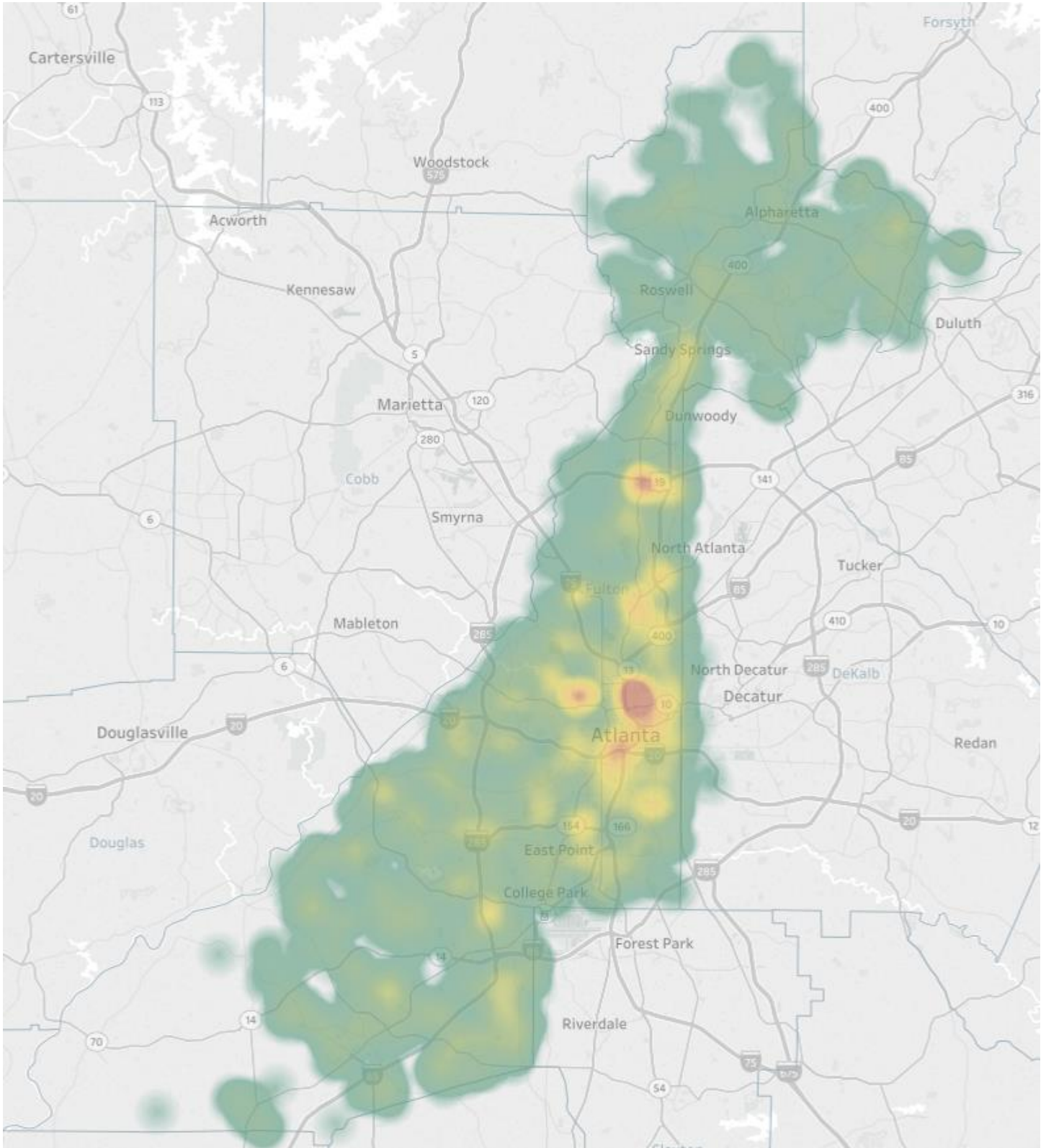
*Population estimates from US Census Bureau used to calculate diagnoses rates. ** Data cleaning (either during detailed data collection that takes place at case interviews or during the geo-coding process) may lead to reassignment of few cases from one territory to another and these may appear as “decreases” when compared to the previous day’s count. These do not reflect errors in the data collection or analysis process but only reflect the minor day-to-day fluctuations in case counts that arise in an evolving public health database like COVID’s. **Note:** All data reported are preliminary and subject to change.

COVID-19 Diagnoses Rate in Fulton County by City (05/08/20)



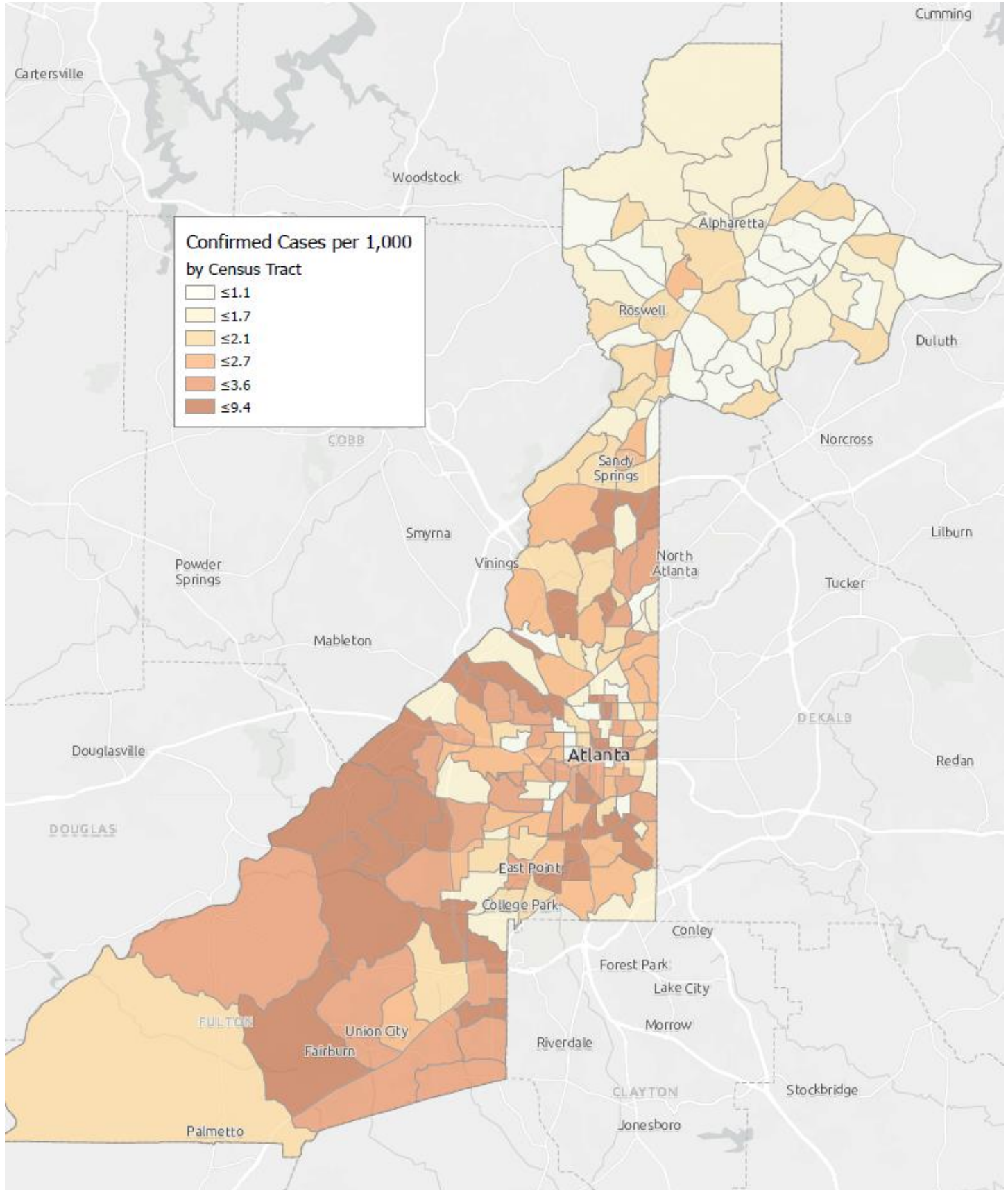
*Rates shown are per 100,000 population

Figure 4. Density Map of COVID-19 Cases in Fulton County (5/08/20)



NB. Data used excludes the outbreak-related cases diagnosed at long-term care facilities and reflects the current geographical distribution of COVID19 diagnoses in the general Fulton County community.

Figure 5. COVID19 Diagnosis Rates in Fulton County by Census Tract (5/08/2020)



*Rate (per 1000 population)

NB. Data used excludes the outbreak-related cases diagnosed at long-term care facilities and reflects the current geographical distribution of COVID19 diagnoses in

COVID-19 CASE COUNTS BY ZIP CODE

ZIP code	Previous Count (5/06/2020)	Current Count (5/08/20)	Percent of Current Total	% Change
30331	280	282	8.5%	0.7%
30318	195	195	5.9%	0.0%
30349	193	198	6.0%	2.6%
30213	123	131	3.9%	6.5%
30315	111	112	3.4%	0.9%
30344	98	98	3.0%	0.0%
30311	102	105	3.2%	2.9%
30342	143	142	4.3%	-0.7%**
30314	64	68	2.0%	6.3%
30310	93	94	2.8%	1.1%
30308	72	70	2.1%	-2.8%**
30022	74	75	2.3%	1.4%
30327	77	77	2.3%	0.0%
30004	78	78	2.4%	0.0%
30309	115	114	3.4%	-0.9%**
30076	63	66	2.0%	4.8%
30291	124	127	3.8%	2.4%
30350	63	64	1.9%	1.6%
30075	95	95	2.9%	0.0%
30328	72	72	2.2%	0.0%
30316	35	35	1.1%	0.0%
30312	189	188	5.7%	-0.5%**
30005	46	46	1.4%	0.0%
30305	68	67	2.0%	-1.5%**
30306	38	39	1.2%	2.6%
30324	59	61	1.8%	3.4%
30337	25	25	0.8%	0.0%
30009	33	34	1.0%	3.0%
30313	30	30	0.9%	0.0%
30326	21	21	0.6%	0.0%
30097	34	35	1.1%	2.9%
30354	32	32	1.0%	0.0%
30303	31	28	0.8%	-9.7%**
30339	12	12	0.4%	0.0%
30268	18	19	0.6%	5.6%
30307	13	14	0.4%	7.7%
30319	19	19	0.6%	0.0%
30336	12	12	0.4%	0.0%
30296	<10	<10	0.3%	-
30363	<10	<10	0.2%	-
30301	<10	<10	0.1%	-
30345	<10	<10	0.2%	-
31131	<10	<10	0.1%	-
30023	<10	<10	0.1%	-
30080	<10	<10	0.1%	-
30135	<10	<10	0.0%	-

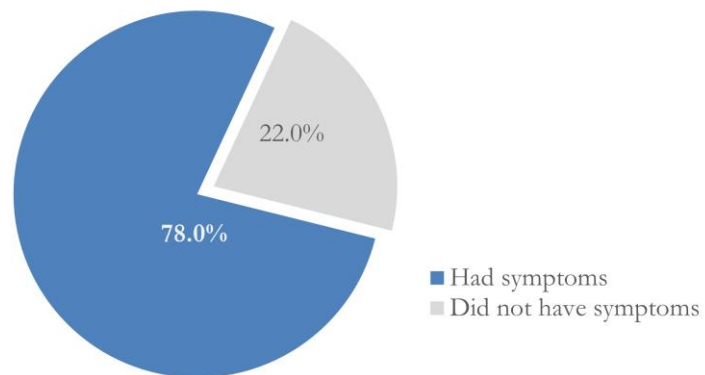
30138	<10	<10	0.0%	-
30139	<10	<10	0.0%	-
30321	<10	<10	0.1%	-
30340	<10	<10	0.2%	-
30341	12	12	0.4%	0.0%
30358	<10	<10	0.0%	-
30374	18	18	0.5%	0.0%
30606	<10	<10	0.0%	-
31150	<10	<10	0.0%	-
30024	<10	<10	0.0%	-
30098	<10	<10	0.0%	-
30334	<10	<10	0.1%	-
30338	<10	<10	0.1%	-
Unknown	258	266	8.0%	-

**** Data cleaning (either during the detailed data collection that takes place at case interviews or during the geo-coding process) may lead to reassignment of few cases from one territory to another and these may appear as “decreases” when compared to the previous day’s count. These do not reflect errors in the data collection or analysis process but only reflect the minor day-to-day fluctuations in case counts that arise in an evolving public health database like COVID’s. Note: All data reported are preliminary and subject to change.**

REPORTING SYMPTOMS

People with COVID-19 have reported a wide range of symptoms ranging from mild symptoms to severe illness. Symptoms may appear 2-14 days after exposure to the virus. Symptoms reported include: cough, shortness of breath/difficulty breathing, fever, chills, repeated shaking with chills, muscle pain, headache, sore throat, new loss of taste or smell – Centers for Disease Control and Prevention (CDC) <https://www.cdc.gov/coronavirus/2019-ncov/symptoms-testing/symptoms.html>

Figure 6. Proportion reporting Symptoms in Fulton County (5/08/20)



COVID-19 cases who have been case interviewed or had medical charts reviewed as at 5/08/20 only

HOSPITALIZATIONS AND DEATHS

Hospitalizations, ICU Admissions and Deaths among COVID-19 Diagnoses in Fulton County (5/08/20)

