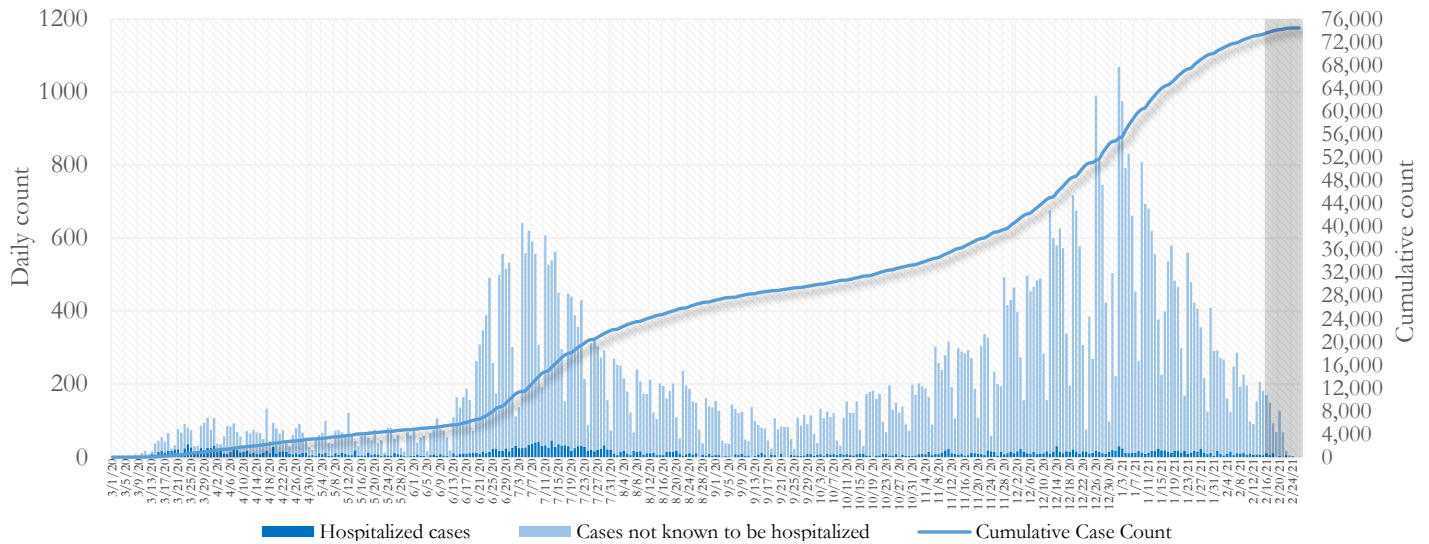


## SUMMARY

- As of February 26, 2021, Fulton County has recorded **73,784 cases of the 2019 novel coronavirus (COVID-19)** and **1,045 confirmed COVID-19 deaths**. 111 deaths are currently being reviewed by GA DPH to confirm cause of death.
- Of **2,747 new diagnoses** made between February 6 and February 19, the central portion of the county (Atlanta) accounted for 43% while the northern and southern parts accounted for 33% and 22% respectively.
- By city, new COVID-19 case rates range from 197.5 per 100,000 persons (Hapeville) to 472.3 per 100,000 persons (Union City). [**Fulton County Diagnoses Rates (per 100,000 persons): Cumulative – 6712.6; Incidence –249.9**]. See map showing incident case rate by ZIP code on Pg.12.
- Among all persons diagnosed with COVID-19 in Fulton County since July 1, **4.5% required hospitalization and 1.1% died**.
- Of all testing done in Fulton County between February 1 and February 14, the **percent positivity rate was 7.6%**.

**Fig 1. Daily and Cumulative COVID-19 cases in Fulton County, GA**



\*Counts shown reflect the number of confirmed cases as of 9:00 pm on 2/25/21 using the date of first positive sample collection. Where date of sample collection was not available or missing, the date of report creation in GA SENDSS was used instead. **Note:** Delays in data reporting may cause changes in data counts, particularly in the shaded portion. Data throughout this report are preliminary and subject to ongoing data cleaning processes, and thus are subject to change.

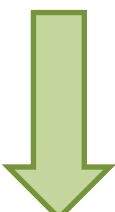
## DISTRIBUTION OF COVID-19 CASES BY REGION

**New cases:** 43% of the new COVID-19 cases in the past 2 weeks occurred in Atlanta while 33% and 22% occurred in the Northern and Southern regions of the county respectively.

Fulton Region	% Cumulative count	% New cases*
Atlanta	42.4%	43.1%
North <sup>1</sup>	34.2%	32.8%
South <sup>2</sup>	19.6%	22.1%
Unincorporated/Unknown	3.7%	2.0%

<sup>1</sup>Includes all Fulton County cities north of Atlanta (Alpharetta, Johns Creek, Milton, Mountain Park, Roswell, Sandy Springs,) |<sup>2</sup>Includes all cities south of Atlanta (Chattahoochee Hills, College Park, East Point, Fairburn, Hapeville, Palmetto, South Fulton, and Union City) \***New cases:** Cases diagnosed in the past 2 weeks only (between 2/6/21 – 2/19/21).

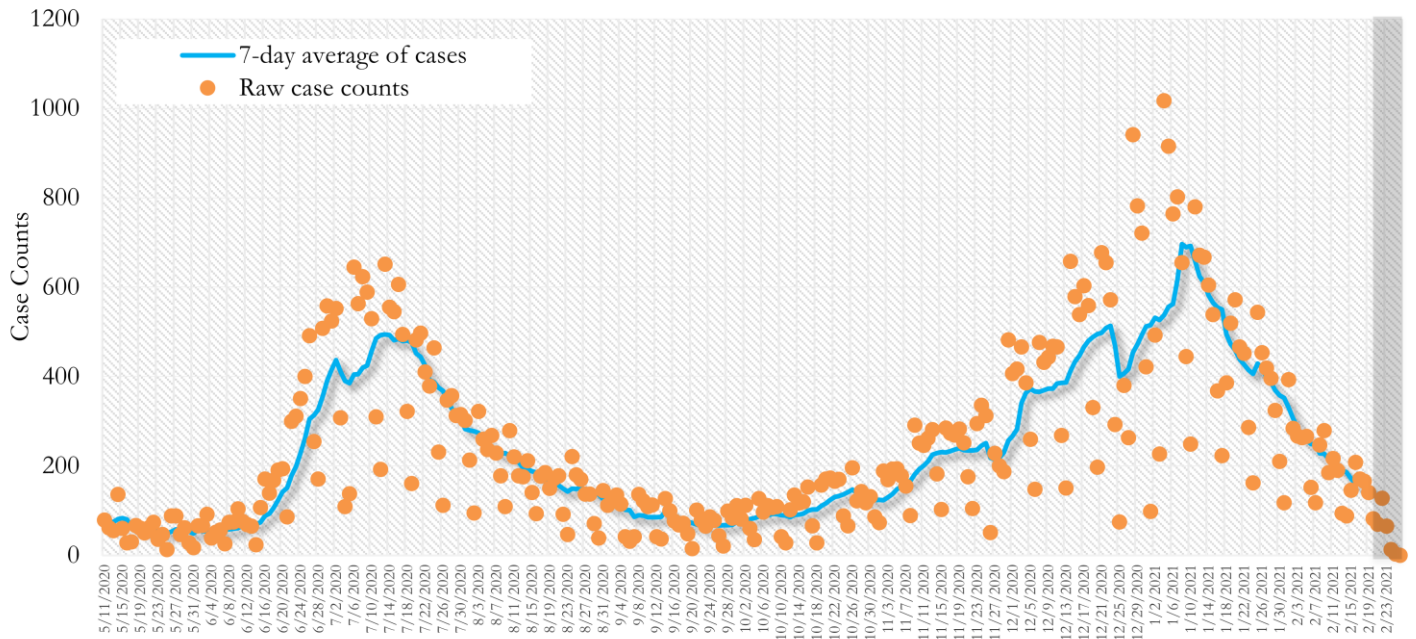
**In the recent two week reporting period (2/6-2/19), there were fewer new cases of COVID-19 in Fulton County than the previous two weeks (1/23-2/5).**



*\*Delayed a week to account for testing results turnaround time.*

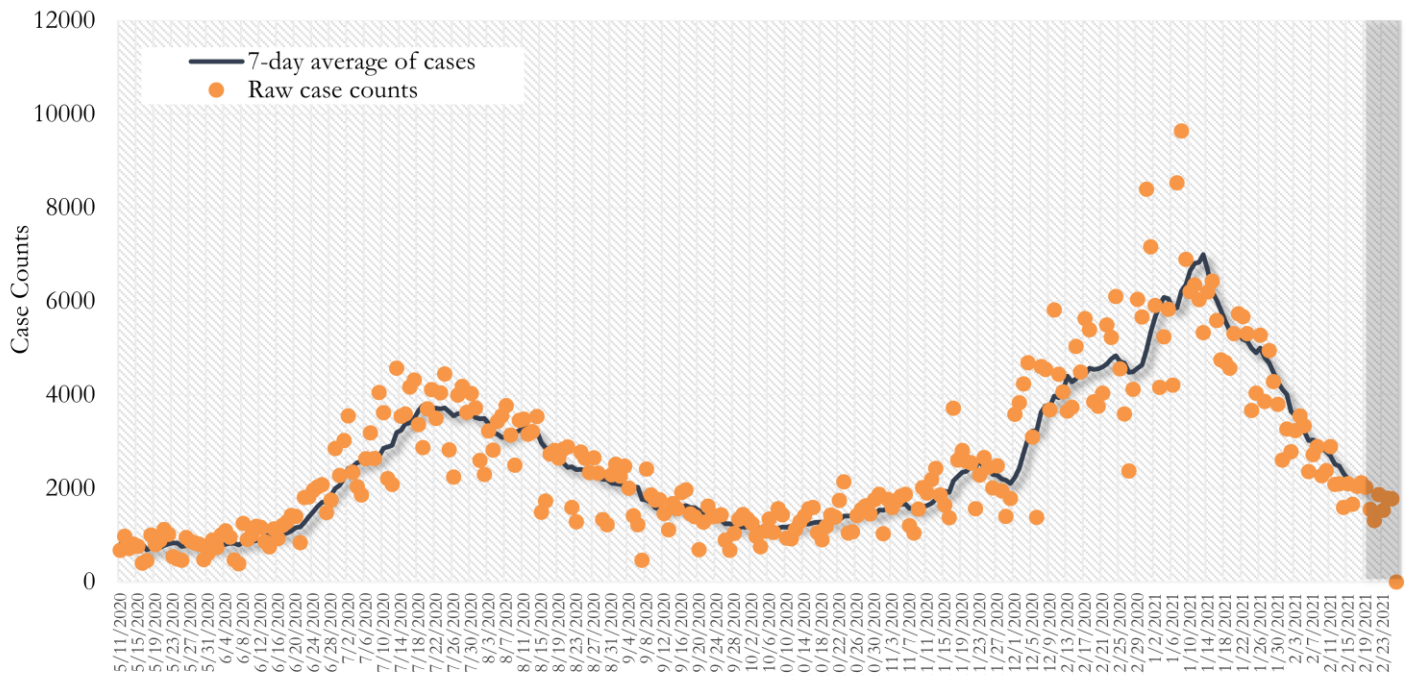
**TRENDS IN COVID-19 CASES, HOSPITALIZATIONS AND DEATHS (7-DAY MOVING AVE.)**

**Fig. 2. New COVID-19 Cases in Fulton County Daily (Averaged over 7 days)**



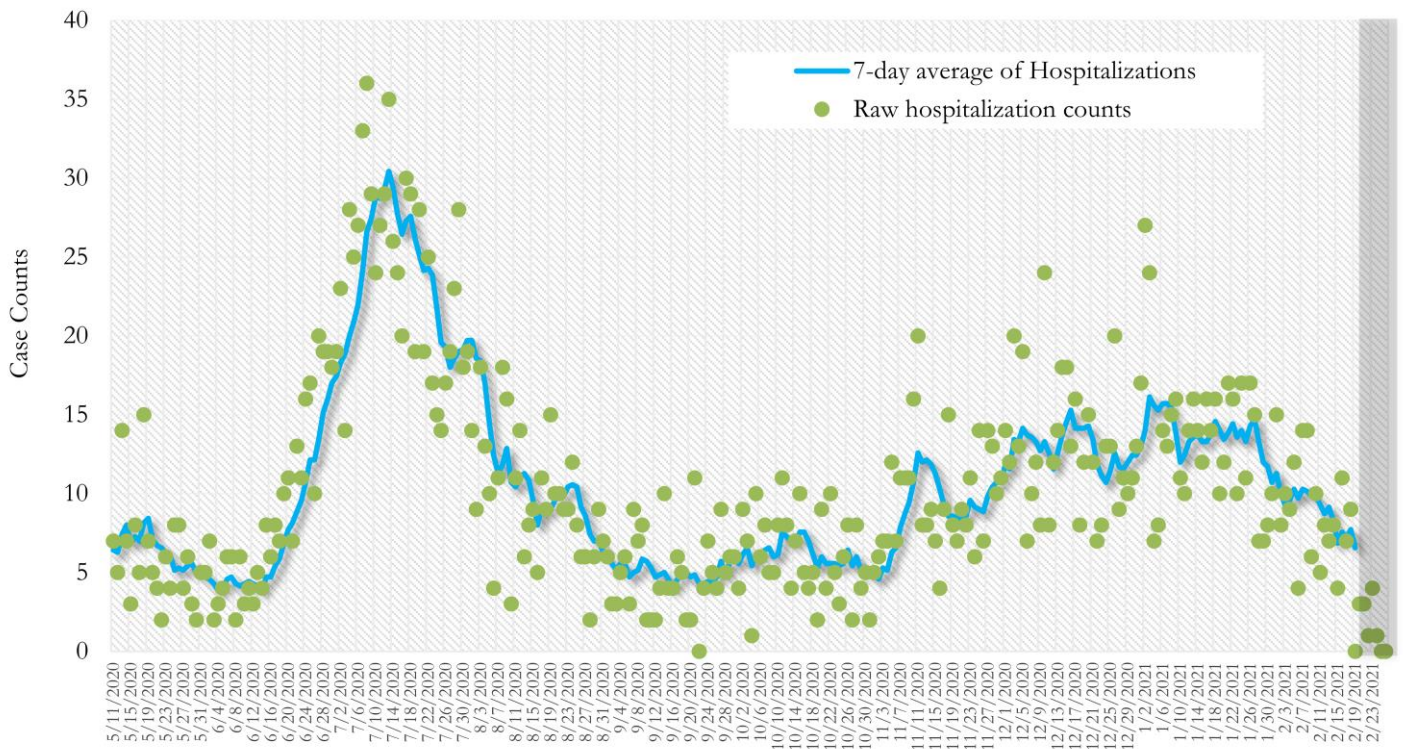
\*Date of collection of first positive sample used (report creation date used where sample collection date is missing). Graph above reflects the trend in COVID-19 diagnosis. Due to the high volume of testing in recent weeks, there have been delays in reporting lab results. Thus, the trend is subject to change as more lab results get added to the state surveillance database.

**Fig. 3. New COVID-19 Cases in Georgia State Daily (Averaged over 7 days)**



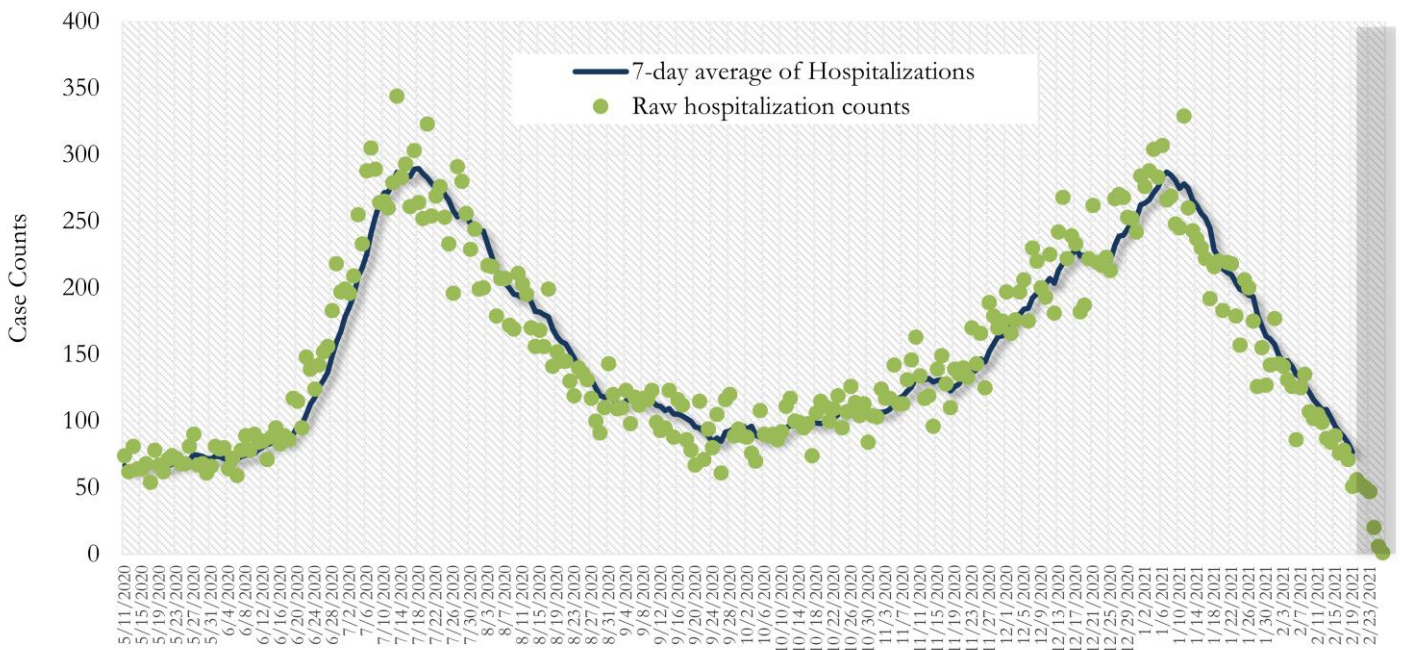
\*Date of collection of first positive sample used (report creation date used where sample collection date is missing). Graph above reflects the trend in COVID-19 diagnosis. Due to the high volume of testing in recent weeks, there have been delays in reporting lab results. Thus, the trend is subject to change as more lab results get added to the state surveillance database.

**Fig. 4. COVID-19 Hospitalizations in Fulton County Daily (Averaged over 7 days)**



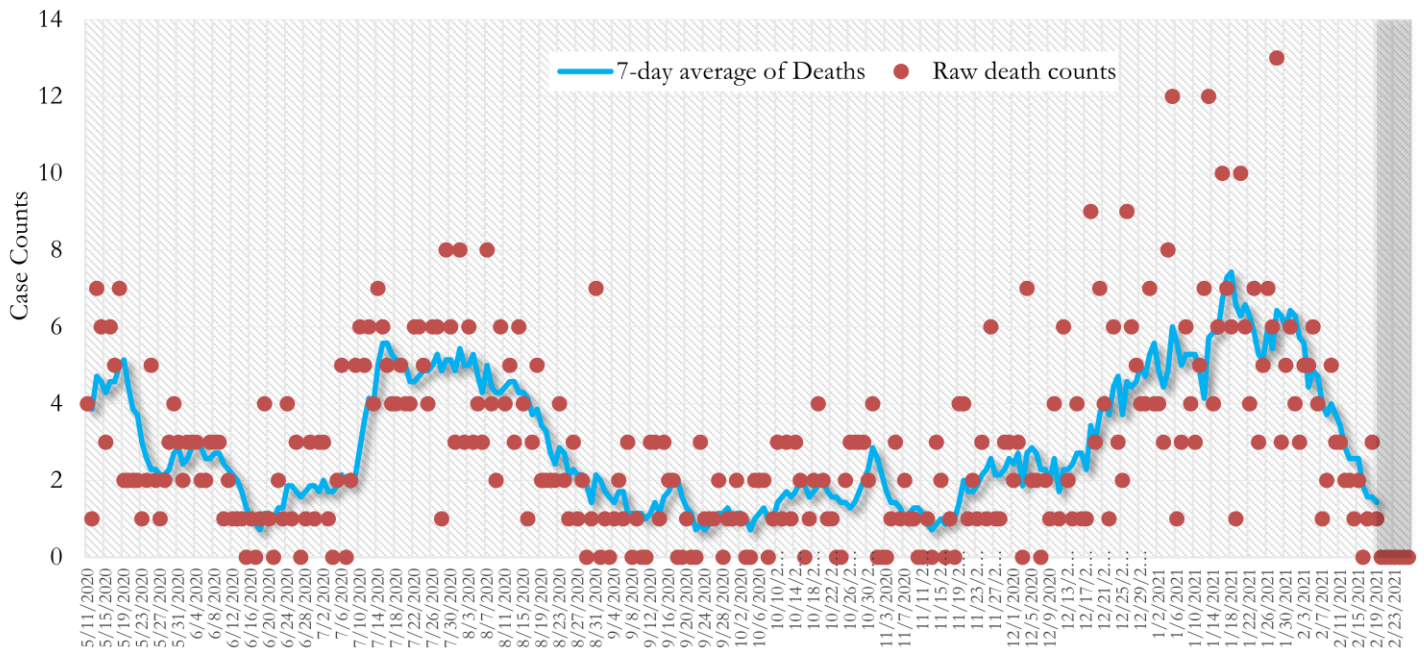
\*Reported date of hospital admission used. Graph above reflects the trend in COVID-19 hospitalizations. Due to the high volume of new cases being added daily, there have been delays in reporting hospitalization data. Thus, the trend is likely to change as more hospitalization data is reported in the state surveillance database.

**Fig. 5. COVID-19 Hospitalizations in Georgia State Daily (Averaged over 7 days)**



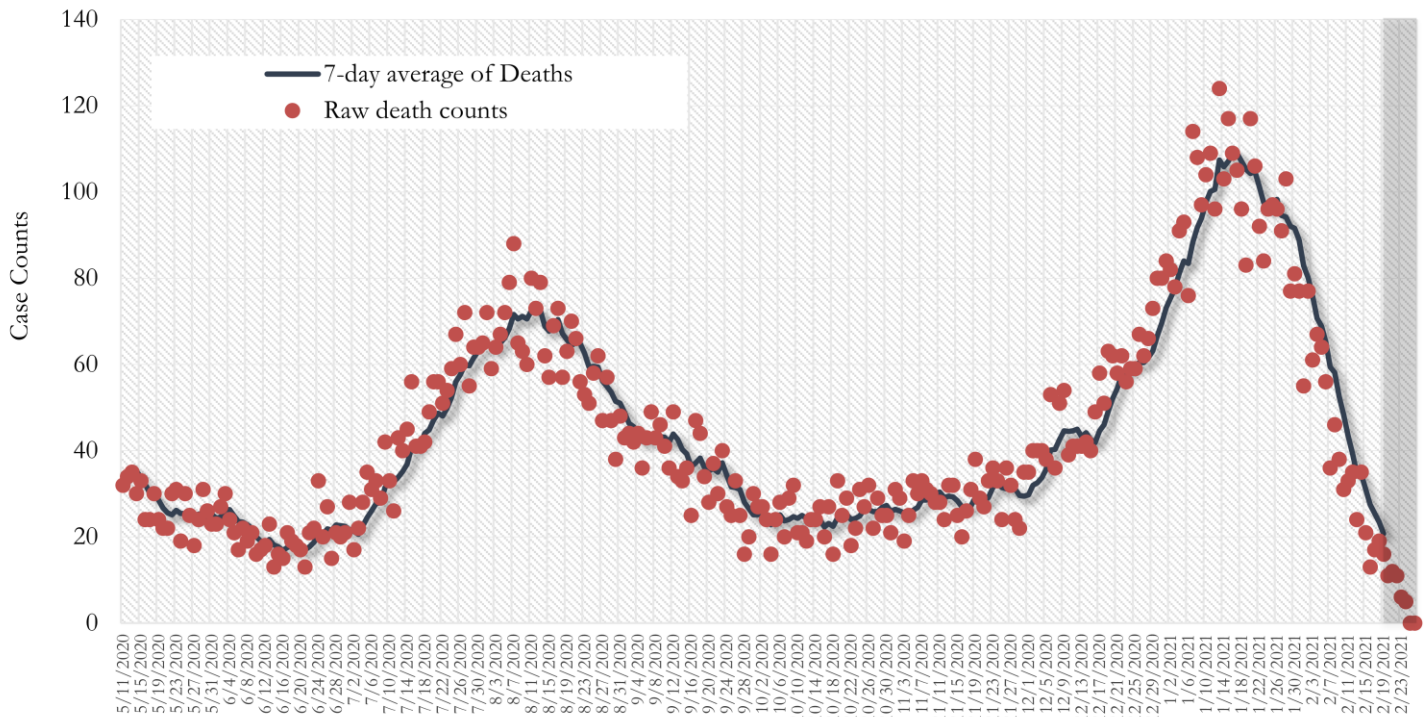
\*Reported date of hospital admission used. Graph above reflects the trend in COVID-19 hospitalizations. Due to the high volume of new cases being added daily, there have been delays in reporting hospitalization data. Thus, the trend is likely to change as more hospitalization data is reported in the state surveillance database.

Fig. 6. COVID-19 Deaths in Fulton County Daily (Averaged over 7 days)



\*Reported date of death used. Graph above reflects the trend in deaths attributed to COVID-19. The trend is likely to change as more data on deaths among persons with COVID-19 is reported in the state surveillance database.

Fig. 7. COVID-19 Deaths in Georgia State Daily (Averaged over 7 days)



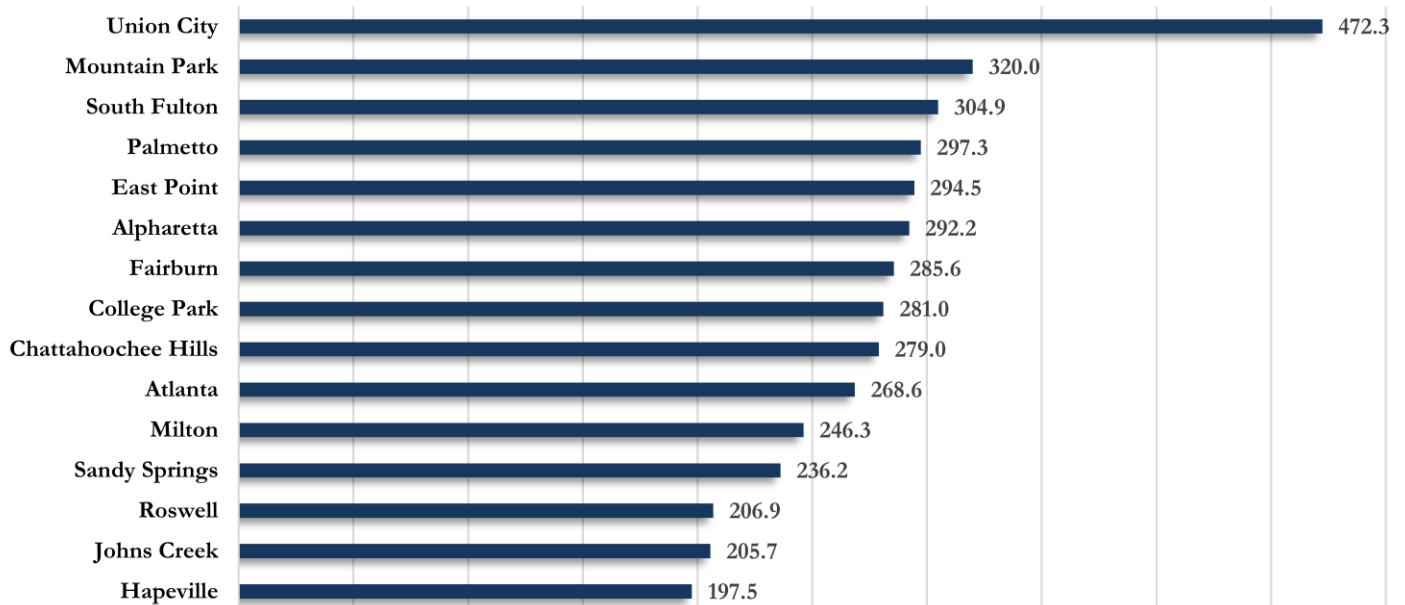
\*Reported date of death used. Graph above reflects the trend in deaths attributed to COVID-19. The trend is likely to change as more data on deaths among persons with COVID-19 is reported in the state surveillance database.

## COVID-19 CASE COUNTS AND RATES BY CITY

	Recent 14-day reporting period <sup>1</sup>	Preceding 14-day reporting period	% Change from preceding 14 days (%) <sup>2</sup>	Incidence Rate <sup>3</sup>
	2/6-2/19	1/23-2/5		
Alpharetta	189	231	↓ 18.2%	292.2
Atlanta	1185	2042	↓ 42.0%	268.6
Chattahoochee Hills	<10	11	↓ 27.3%	279.0
College Park	39	50	↓ 22.0%	281.0
East Point	103	141	↓ 27.0%	294.5
Fairburn	42	93	↓ 54.8%	285.6
Hapeville	13	24	↓ 45.8%	197.5
Johns Creek	172	343	↓ 49.9%	205.7
Milton	94	179	↓ 47.5%	246.3
Mountain Park	<10	<10	↓ 60.0%	320.0
Palmetto	13	31	↓ 58.1%	297.3
Roswell	195	386	↓ 49.5%	206.9
Sandy Springs	249	469	↓ 46.9%	236.2
South Fulton	290	528	↓ 45.1%	304.9
Union City	99	146	↓ 32.2%	472.3
Unknown	51	68	-	-

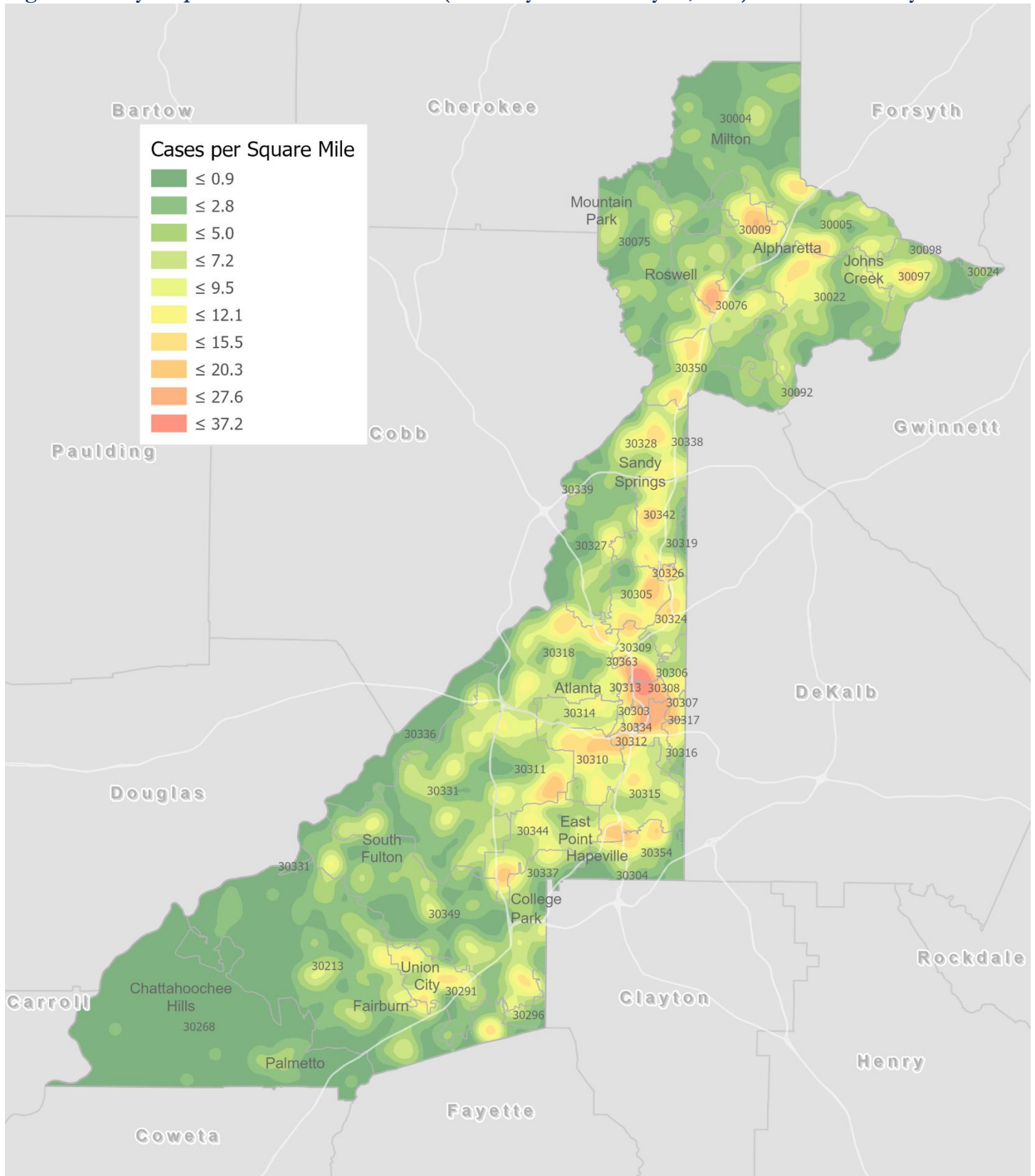
<sup>1</sup>**New cases:** Cases diagnosed in most recent 14 days (based on reported dates of positive sample collection). To allow for lag in reporting results of new diagnoses from samples collected in the most recent week, data used for incident diagnoses analyses were moved back by one week. <sup>2</sup>**% change:** These reflect the percentage increase or decrease in new diagnoses between the 14 days preceding the most recent 7 days and the 14 days preceding that. <sup>3</sup>**(Incidence) Rate:** Rate of new diagnoses in the last 14 day period preceding the immediate past week. **\*\*Data cleaning** (either during case interviews or address geo-coding) may lead to reassignment of few cases from one territory to another based on their corrected addresses. These may appear as "decreases" when compared to the previous counts. These do not reflect errors in the data collection or analysis process but only reflect the minor day-to-day fluctuations in case counts that arise in an evolving public health database like COVID's. <sup>4</sup>**Incidence rate is skewed high due to small population.** **Note: All data reported are preliminary and subject to change.**

Fig. 8. Incidence Rates by Fulton City for Recent 14-day Reporting Period



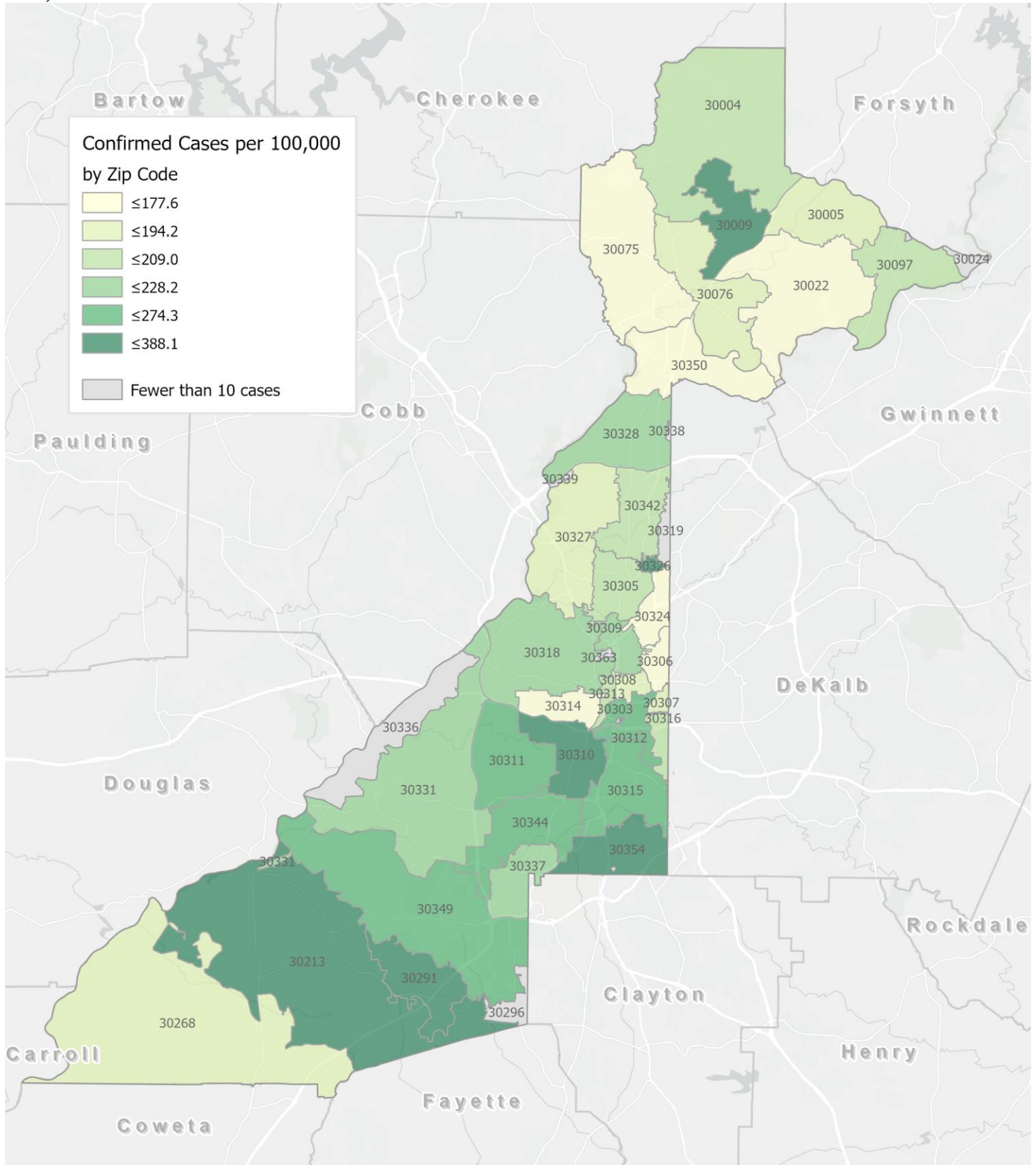
\*Rates shown are per 100,000 persons | All data shown are preliminary and are subject to change as testing results get updated.

Fig. 9. Density Map – New COVID-19 Cases (February 6 – February 19, 2021) in Fulton County



**New COVID-19 cases:** Cases diagnosed in most recent 14 days (based on reported dates of positive sample collection). To allow for lag in reporting results of positive cases from samples collected in the immediate past 7 days, data used for incident diagnoses analyses are moved back by one week. Map reflects new COVID-19 cases diagnosed between Feb 6<sup>th</sup> and Feb 19<sup>th</sup>, 2021 across Fulton County, excluding LTCF cases.

Fig. 10. New COVID-19 Diagnoses Rates (per 100,000 population) by Zip Code (February 6 – February 19, 2021)



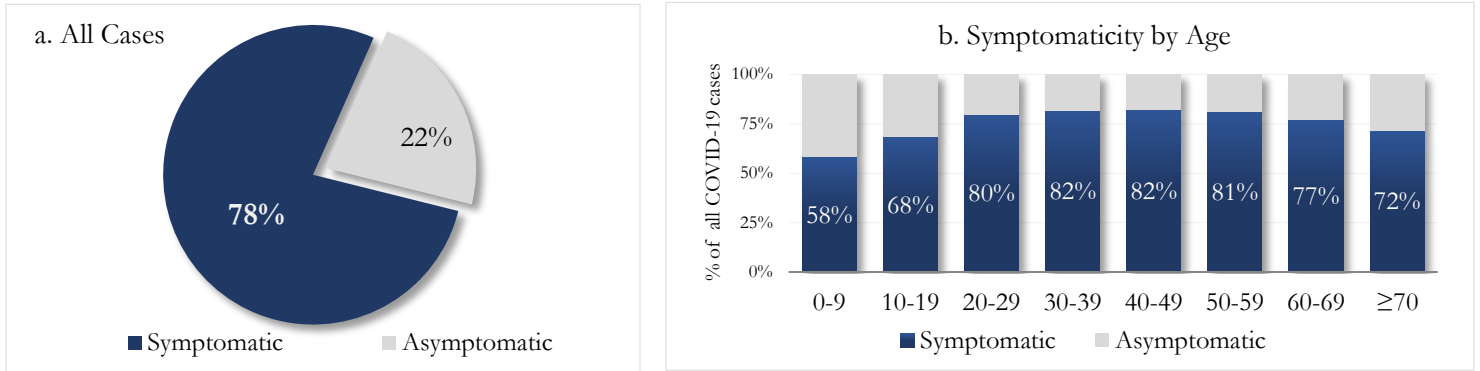
\*Rates shown are per 100,000 populations.

**New COVID-19 cases:** Cases diagnosed in most recent 14 days (based on reported dates of positive sample collection). To allow for lag in reporting results of positive cases from samples collected in the immediate past 7 days, data used for incident diagnoses analyses are moved back by one week. Data used excludes outbreak-related cases at long-term care facilities and map shown reflects only the new non-LTCF cases diagnosed between the dates shown in map title. See page 12 for zip code break down table.

## REPORTING SYMPTOMS AMONG PERSONS WITH COVID-19 IN FULTON

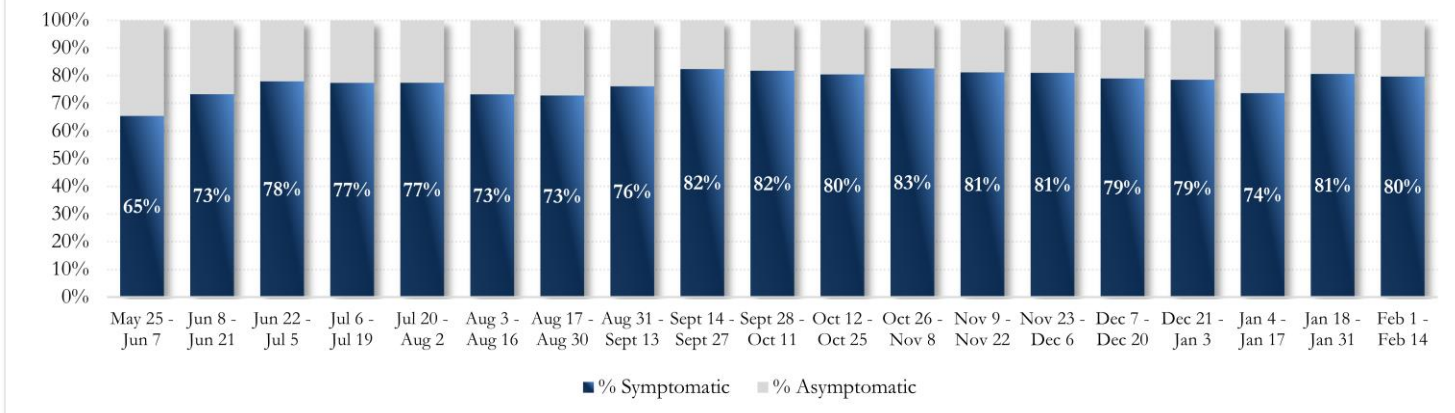
People with COVID-19 have reported a wide range of symptoms ranging from mild symptoms to severe illness. Symptoms may appear 2-14 days after exposure to the virus. Symptoms reported include: cough, shortness of breath/difficulty breathing, fever, chills, muscle pain, headache, sore throat, congestion, nausea or vomiting, diarrhea, fatigue, or new loss of taste or smell – Centers for Disease Control and Prevention (CDC) – Centers for Disease Control and Prevention (CDC) <https://www.cdc.gov/coronavirus/2019-ncov/symptoms-testing/symptoms.html>

**Fig. 11a & b. Total Proportion Reporting Symptoms in Fulton**



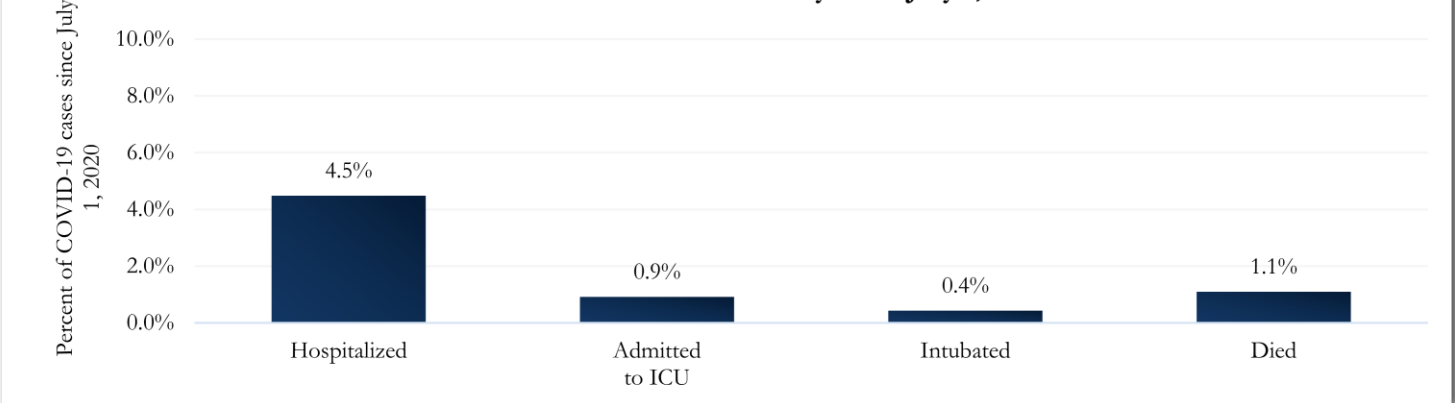
\*\*\*COVID-19 cases who have been case interviewed or had medical charts reviewed as of 2/26/21 only. n = 42,188\*\*\*

**Fig 12. Total Proportion Reporting Symptoms in Fulton County Over Time**



## COVID-19 HOSPITALIZATIONS, ICU ADMISSIONS AND DEATHS IN FULTON

**Fig. 13. Hospitalizations, ICU Admissions, Intubations, and Deaths among COVID-19 Cases in Fulton County since July 1, 2020**





## DEMOGRAPHIC DISTRIBUTIONS – COVID-19 CASES AND DEATHS

### A. Distribution of COVID-19 cases by gender, age, and race in Fulton County by Fulton Region in the past 28 days (1/23- 2/19)

	North Fulton Cities <sup>1</sup> Count (%)	Atlanta Count (%)	South Fulton Cities <sup>2</sup> Count (%)	Unknown City Count (%)	All Fulton Count (%)
<b>Total COVID-19 cases</b>	<b>2367</b>	<b>3010</b>	<b>1535</b>	<b>119</b>	<b>7031</b>
<b>Gender:</b> Female	1258 (53%)	1567 (52%)	853 (56%)	66 (55%)	3744 (53%)
Male	1106 (47%)	1429 (47%)	676 (44%)	52 (44%)	3263 (46%)
Unknown*	<10	14 (<1%)	<10	<10	24 (<1%)
<b>Age:</b> 0-9	137 (6%)	149 (5%)	79 (5%)	<10	372 (5%)
10-19	350 (15%)	250 (8%)	183 (12%)	15 (13%)	798 (11%)
20-29	365 (15%)	701 (23%)	223 (15%)	22 (18%)	1311 (19%)
30-39	389 (16%)	618 (21%)	264 (17%)	19 (16%)	1290 (18%)
40-49	412 (17%)	411 (14%)	243 (16%)	20 (17%)	1086 (15%)
50-59	355 (15%)	387 (13%)	259 (17%)	15 (13%)	1016 (14%)
60-69	197 (8%)	253 (8%)	158 (10%)	17 (14%)	625 (9%)
≥70	161 (7%)	234 (8%)	124 (8%)	<10	523 (7%)
Unknown*	<10	<10	<10	<10	10 (<1%)
<b>Race:</b> Asian, NH	223 (9%)	72 (2%)	15 (1%)	<10	313 (4%)
Black, NH	295 (12%)	1438 (48%)	1089 (71%)	44 (37%)	2866 (41%)
White, NH	984 (42%)	694 (23%)	77 (5%)	24 (20%)	1779 (25%)
Hispanic	351 (15%)	151 (5%)	101 (7%)	12 (10%)	615 (9%)
Other, NH	191 (8%)	160 (5%)	43 (3%)	<10	400 (6%)
Unknown*	323 (14%)	495 (16%)	210 (14%)	30 (25%)	1058 (15%)

\*Unknown includes cases not yet interviewed. 28 days delayed by seven to account for lag in reporting lab results. <sup>1</sup>Includes all Fulton County cities north of Atlanta (Alpharetta, Johns Creek, Milton, Mountain Park, Roswell, Sandy Springs). <sup>2</sup>Includes all cities south of Atlanta (Chattahoochee Hills, College Park, East Point, Fairburn, Hapeville, Palmetto, South Fulton, and Union City)

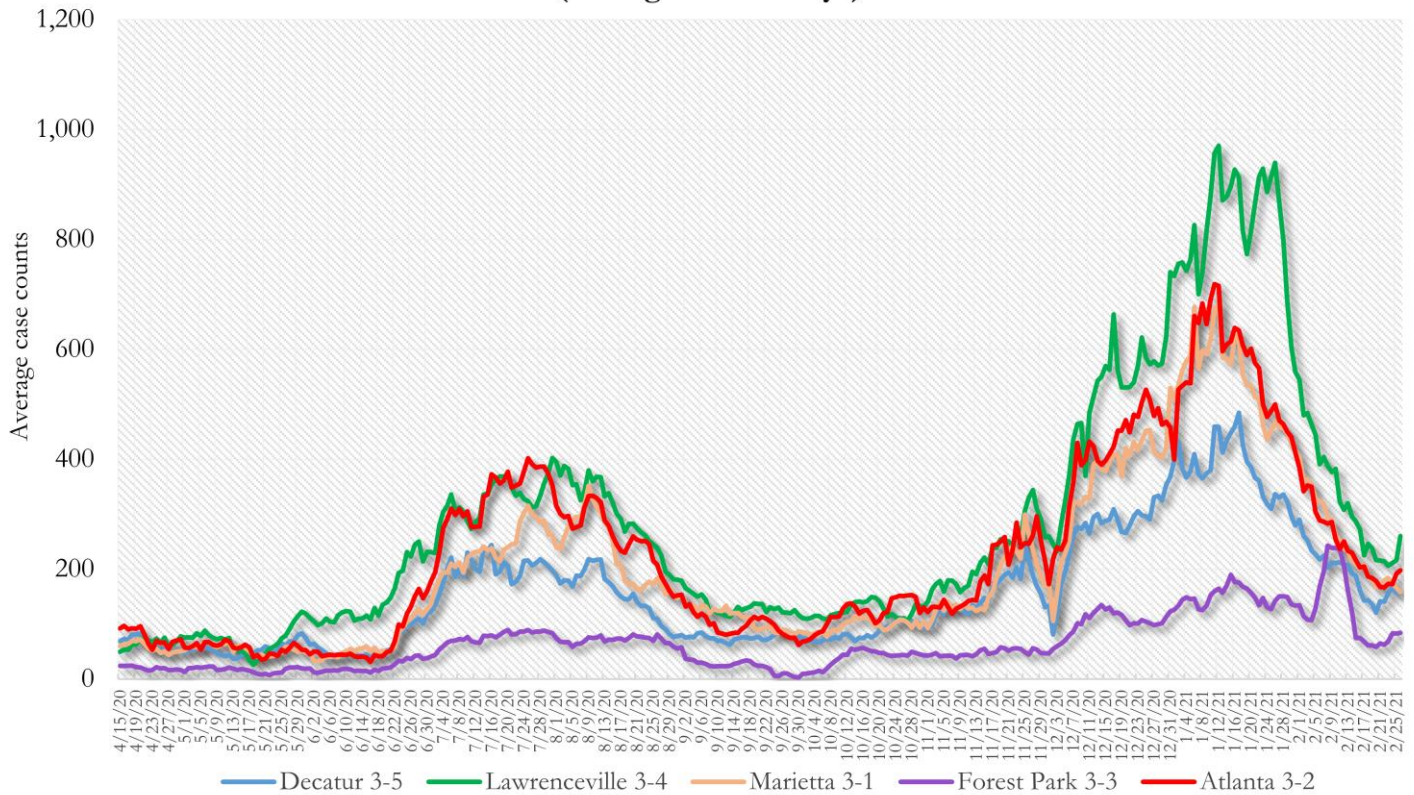
### B. Distribution of COVID-19 deaths by gender, age, and race in Fulton County in the past 28 days (1/23 - 2/19)

	Count of New Deaths	% of New Deaths
<b>Total COVID-19 deaths</b>	<b>29</b>	
<b>Gender:</b> Female	14	48%
Male	15	52%
Unknown	<10	<1%
<b>Age:</b> ≤ 29	<10	<1%
30-39	<10	<1%
40-49	<10	7%
50-59	<10	7%
60-69	10	34%
≥70	15	52%
Unknown	<10	<1%
<b>Race:</b> Asian, NH	<10	<1%
Black, NH	18	62%
White, NH	10	34%
Hispanic	<10	3%
Other, NH	<10	<1%
Unknown	<10	<1%

**Note:** All data reported are preliminary and subject to change. This table includes data on confirmed COVID-19 deaths and is subject to change as GA DPH completes cause of death confirmation processes. Data are 28 days delayed by seven to account for lag in reporting of deaths.

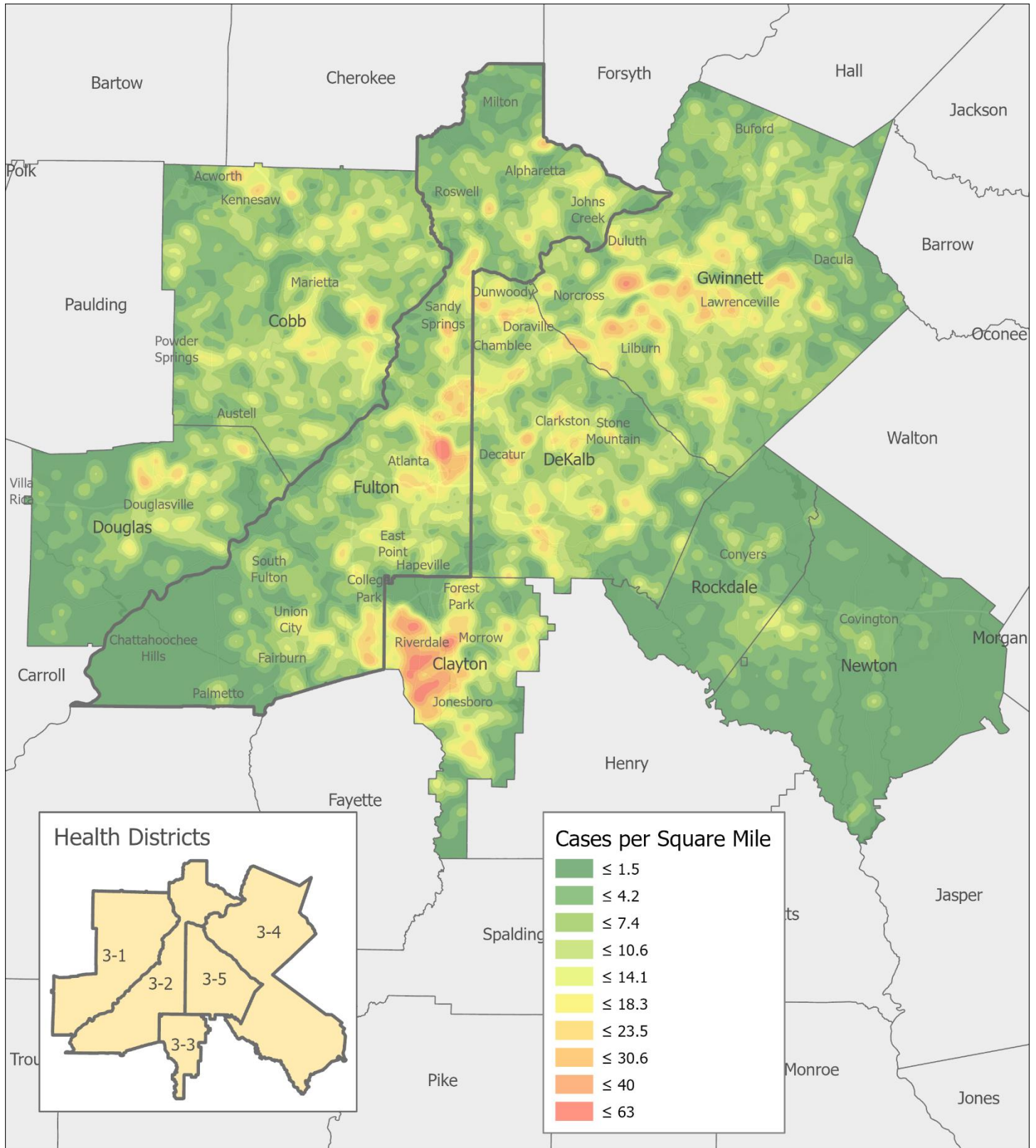
**COVID-19 CASE TRENDS IN FULTON AND SURROUNDING DISTRICTS**

**Fig. 14. Daily Case Counts for Atlanta Metro Districts  
(Averaged over 7 days)**



\*Graph shows the average number of cases calculated from the daily cumulative case counts in the metro Atlanta districts. Increases in daily cumulative case counts may include cases diagnosed earlier during the pandemic but were only recently reported to the state as cases diagnosed belonging to these districts.

Fig. 15. COVID-19 Cases in Fulton County and Surrounding Districts (February 3 – February 16, 2021)\*



\*Due to a technological glitch, this map is not updated with the most recent data. The above map reflects the data as published on 2/23/21.

## COVID-19 NEW CASE<sup>1</sup> COUNTS BY ZIP CODE

Zip Code	Recent 14-day reporting period (2/6–2/19)	Previous 14-day reporting period (1/23–2/5)	% Change between reporting periods <sup>2</sup>
<b>All Fulton</b>	<b>2747</b>	<b>4749</b>	<b>↓ 42.2%</b>
30004	113	216	↓ 47.7%
30005	78	104	↓ 25.0%
30009	63	70	↓ 10.0%
30022	142	298	↓ 52.3%
30023	0	<10	↓ 100.0%
30024	<10	<10	-
30075	98	181	↓ 45.9%
30076	96	171	↓ 43.9%
30080	0	0	-
30097	67	107	↓ 37.4%
30098	0	0	-
30135	0	0	-
30138	0	0	-
30139	0	0	-
30213	135	208	↓ 35.1%
30268	18	45	↓ 60.0%
30291	86	150	↓ 42.7%
30296	<10	25	↓ 72.0%
30301	<10	<10	-
30303	20	21	↓ 4.8%
30305	67	132	↓ 49.2%
30306	32	48	↓ 33.3%
30307	14	25	↓ 44.0%
30308	43	82	↓ 47.6%
30309	73	148	↓ 50.7%
30310	97	139	↓ 30.2%
30311	114	161	↓ 29.2%
30312	63	125	↓ 49.6%
30313	22	58	↓ 62.1%
30314	44	81	↓ 45.7%
30315	105	144	↓ 27.1%
30316	27	35	↓ 22.9%
30318	166	300	↓ 44.7%
30319	<10	28	↓ 78.6%
30321	<10	<10	-
30324	58	98	↓ 40.8%
30326	23	17	↑ 35.3%
30327	53	136	↓ 61.0%
30328	95	167	↓ 43.1%
30331	162	289	↓ 43.9%
30334	<10	0	-
30336	<10	<10	-
30337	29	45	↓ 35.6%

Zip Code	Recent 14-day reporting period (2/6–2/19)	Previous 14-day reporting period (1/23–2/5)	% Change between reporting periods
30338	<10	<10	-
30339	<10	<10	-
30340	0	0	-
30341	0	0	-
30342	86	169	↓ 49.1%
30344	96	135	↓ 28.9%
30345	0	0	-
30349	174	306	↓ 43.1%
30350	80	147	↓ 45.6%
30354	53	74	↓ 28.4%
30358	0	0	-
30363	<10	10	↓ 20.0%
30374	0	0	-
30606	0	0	-
31131	0	0	-
31150	0	0	-
Unknown	15	26	-

<sup>1</sup>**New cases:** Cases diagnosed in most recent 28 days (based on reported dates of positive sample collection). To allow for lag in reporting results of new diagnoses from samples collected in the most recent week, data used for incident diagnoses analyses were moved back by one week. <sup>2</sup>**Percent change:** These reflect the percentage increase or decrease of new diagnoses between the 14 days preceding the past 7 days and the 14 days preceding that. Changes in ZIP codes with less than 10 cases in both 2 week intervals are not reported

The following data are updated every two weeks.

Last updated 2/16/2021

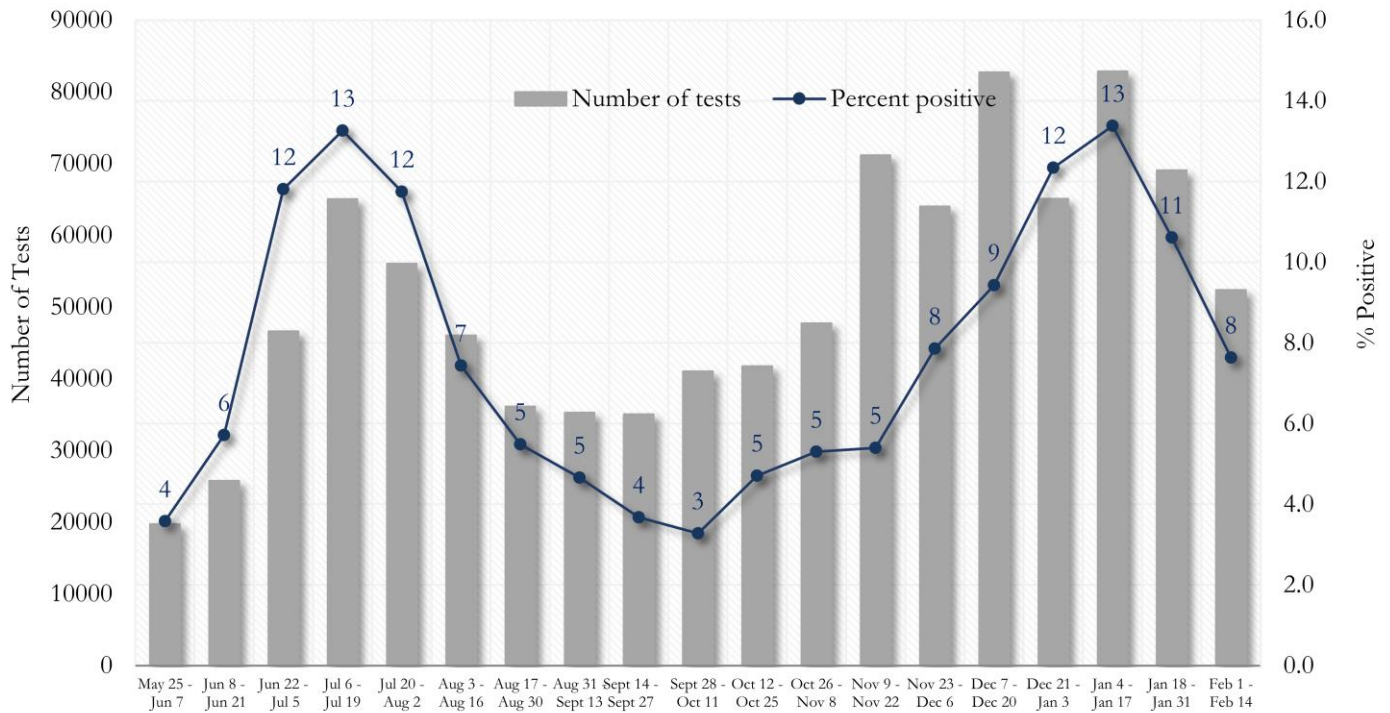
These data are generated using a fixed start date and counted forward in 14-day intervals. Using these time blocks allows for the stability in trends over time and accounts for delays in reporting lab results.

In the interest of keeping the reports concise and useful, the cumulative counts updated on a monthly basis can now be viewed between updates at the Fulton County Board of Health website [here](#).

Please visit the Georgia Department of Public Health Daily Status Report [here](#) for cumulative daily counts.

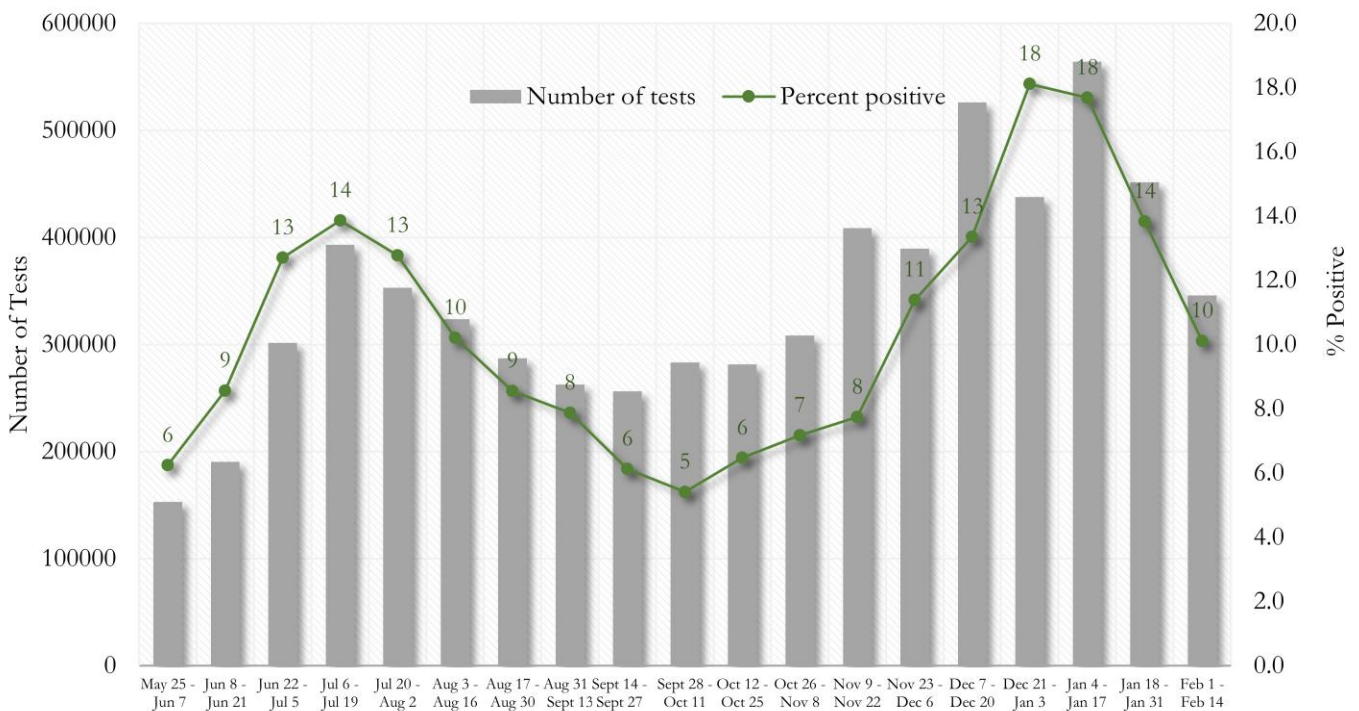
**COVID-19 TESTING AND POSITIVITY IN FULTON COUNTY AND GEORGIA**

**Fig. 16. Trends in Positive COVID-19 Tests in Fulton County by 14-day Periods**



\*Data on Polymerase Chain Reaction (PCR) tests only included.

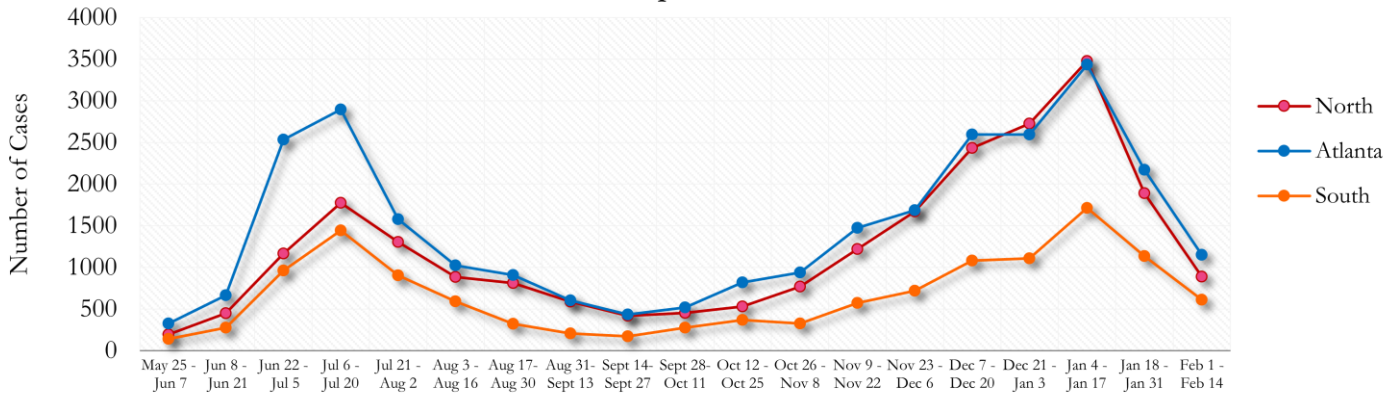
**Fig. 17. Trends in Positive COVID-19 Tests in Georgia by 14-day Periods**



\*Data on Polymerase Chain Reaction (PCR) tests only included.

## TRENDS IN COVID-19 CASES AMONG DEMOGRAPHIC GROUPS (14 DAY PERIODS)

**Fig. 18. Trends in Geographic distribution of COVID-19 Cases in Fulton County by 14-day periods**

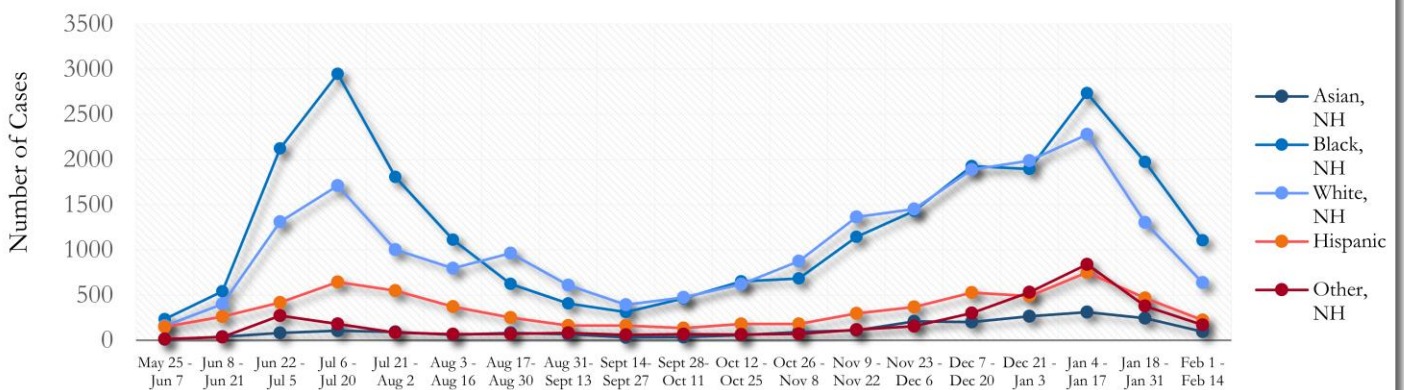


In the past two weeks, the city of Atlanta and the Northern region have accounted for almost equal amounts of new cases.

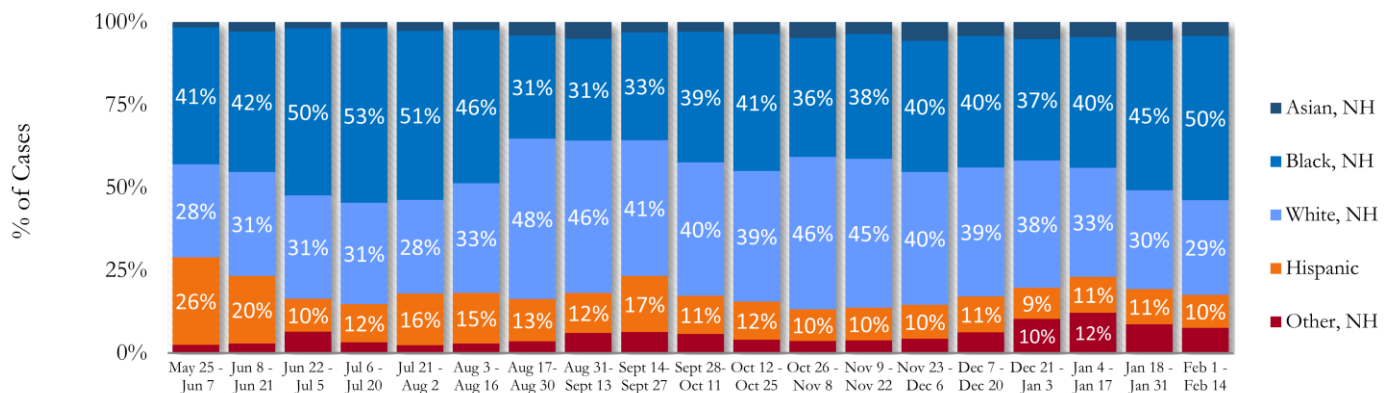
\*North - Includes all Fulton cities north of Atlanta (Alpharetta, Johns Creek, Milton, Mountain Park, Roswell, Sandy Springs)

\*South - Includes all Fulton cities south of Atlanta (Chattahoochee Hills, College Park, East Point, Fairburn, Hapeville, Palmetto, South Fulton, and Union City)

**Fig. 19. Trends in Racial Distribution of COVID-19 Cases in Fulton County by 14-day periods**

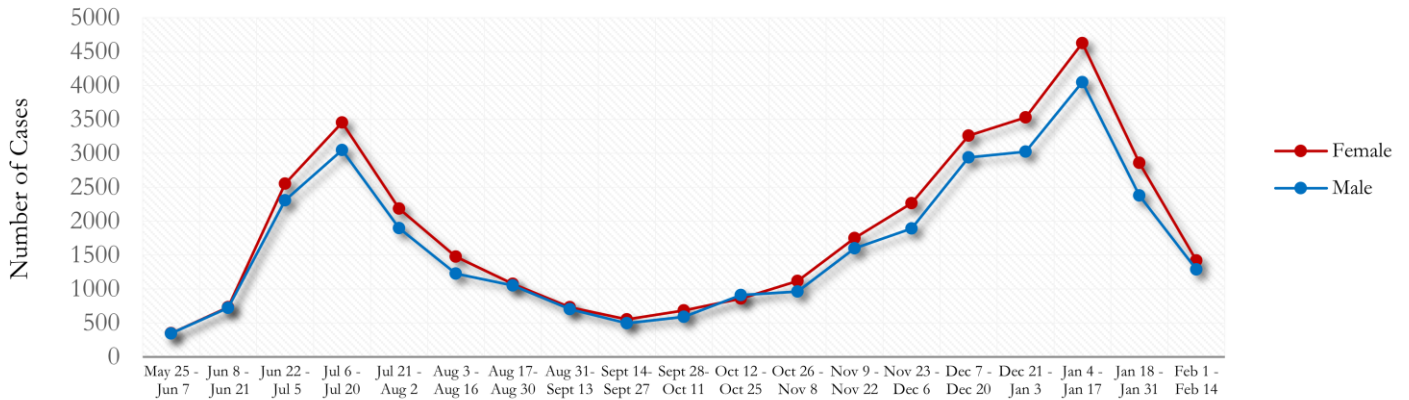


**Fig. 20. Racial Distribution of COVID-19 Cases in Fulton County by 14-day periods**

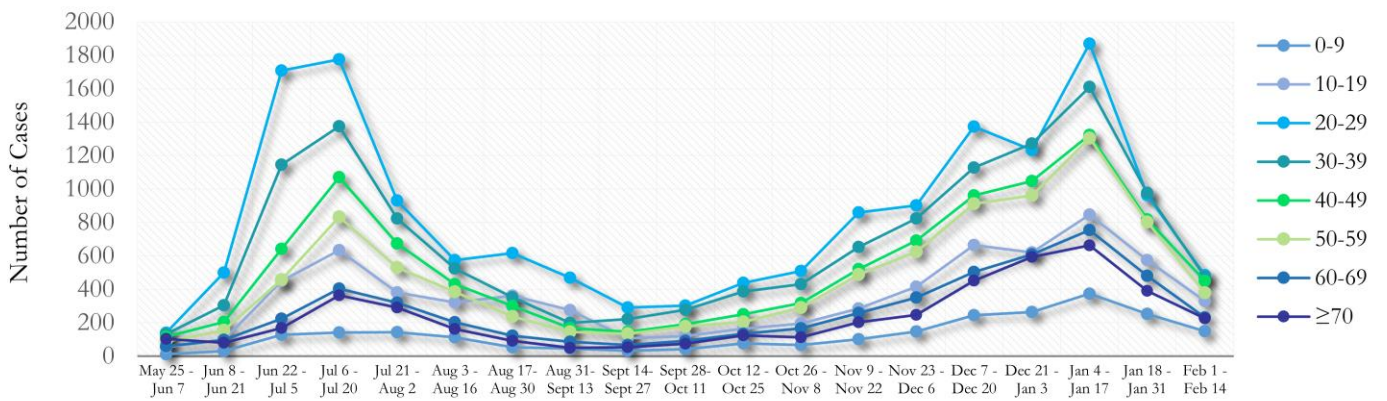


About 17% of all Fulton County COVID cases are missing data on patient race and ethnicity and in the past two weeks, about 24% of cases are missing this data.

**Fig. 21. Trends in Gender Distribution of COVID-19 Cases in Fulton County by 14-day periods**

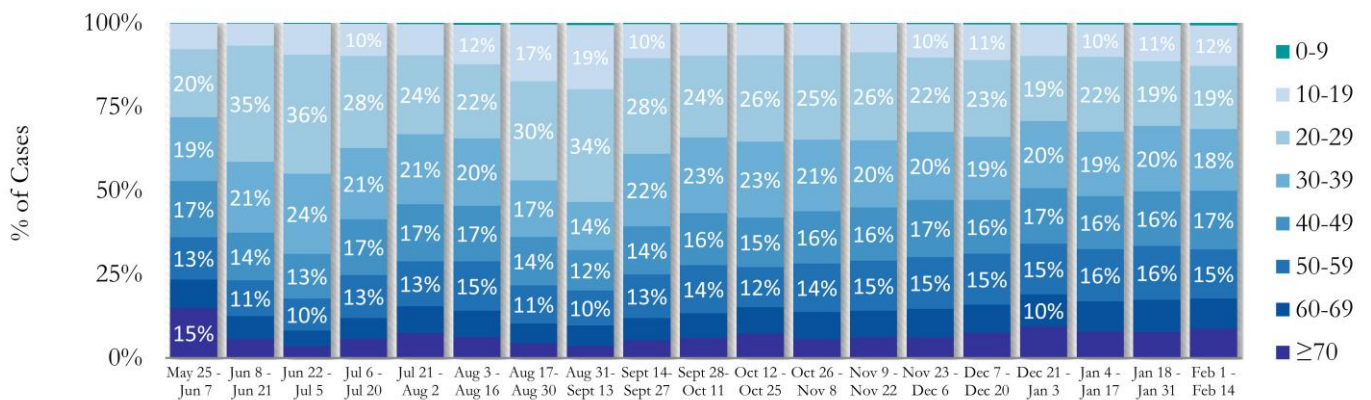


**Fig. 22. Trends in Age Distribution of COVID-19 Cases in Fulton County by 14-day periods**



In the most recent two weeks, 20-29 year olds and 30-39 year olds accounted for the majority of new cases.

**Fig. 23. Age Distribution of COVID-19 Cases in Fulton County by 14-day periods**

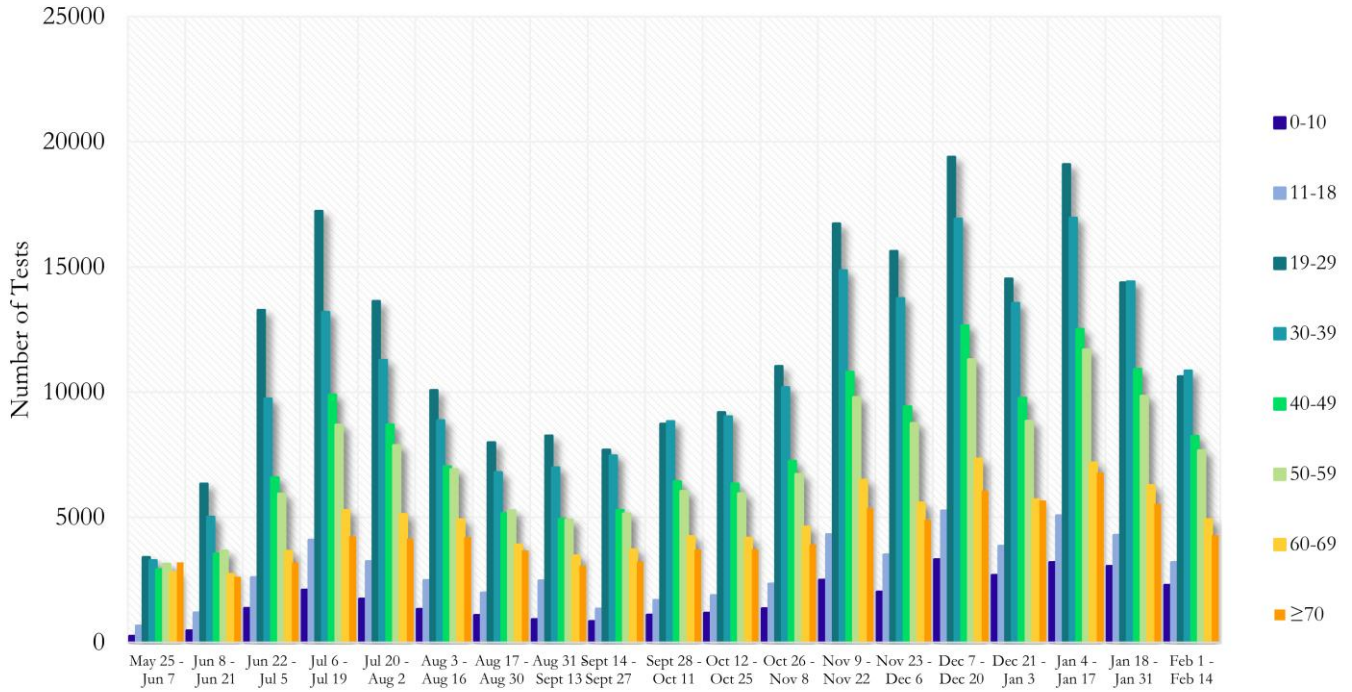


Value labels under 10% are not shown.



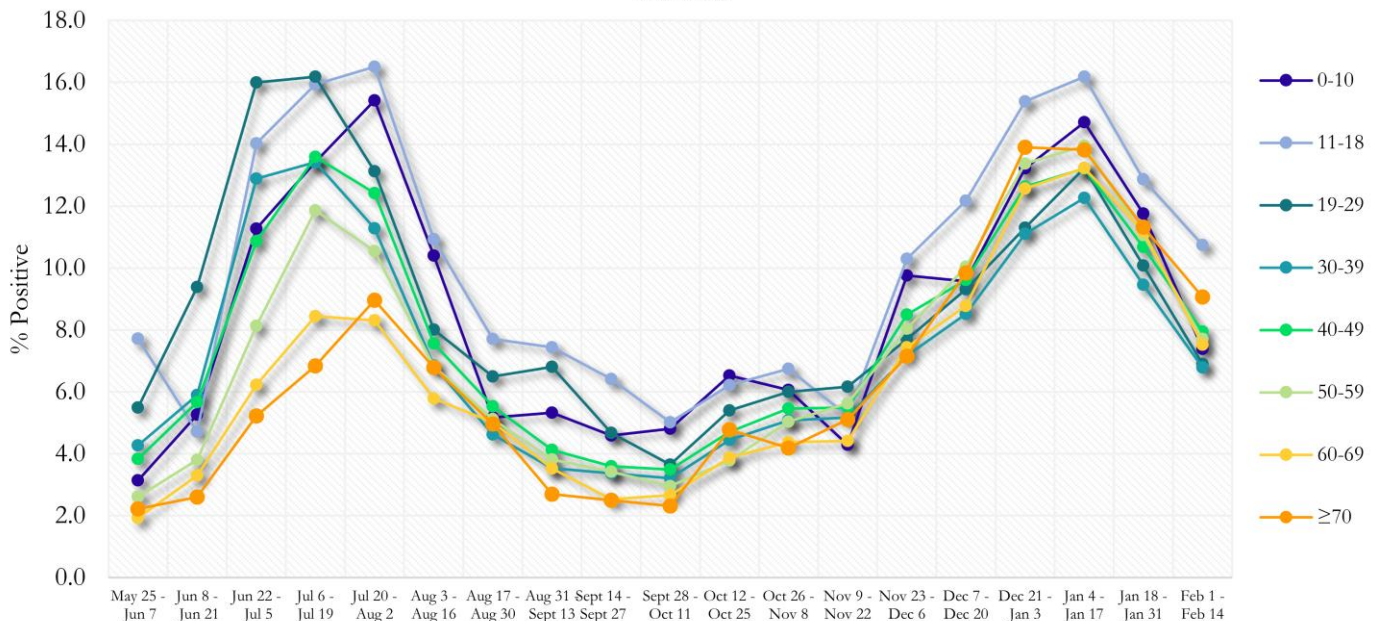
**COVID-19 TESTING AND POSITIVITY IN FULTON COUNTY BY AGE AND RACE**

**Fig. 24. COVID-19 Tests by Age in Fulton County by 14-day Periods**



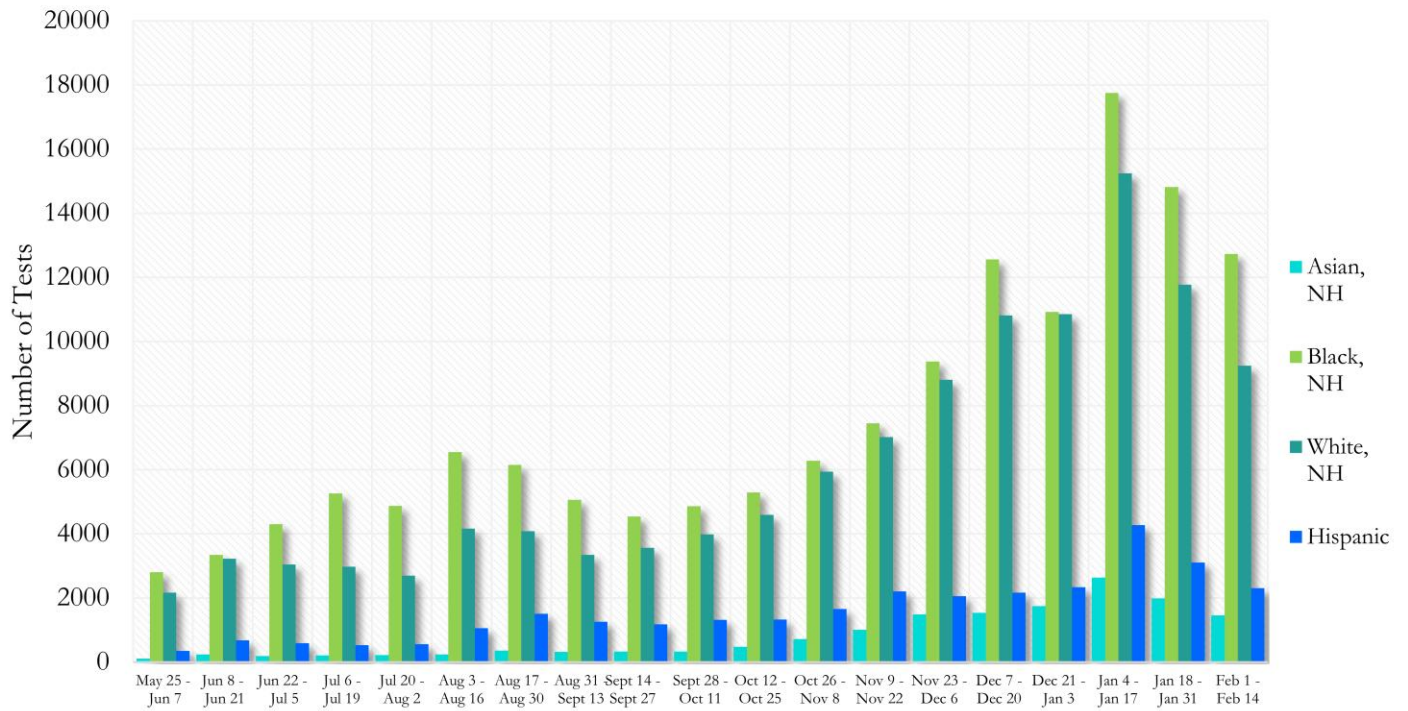
\*Data on Polymerase Chain Reaction (PCR) tests only included.

**Fig. 25. Percent Positive COVID-19 Tests by Age Group in Fulton County by 14-day Periods**



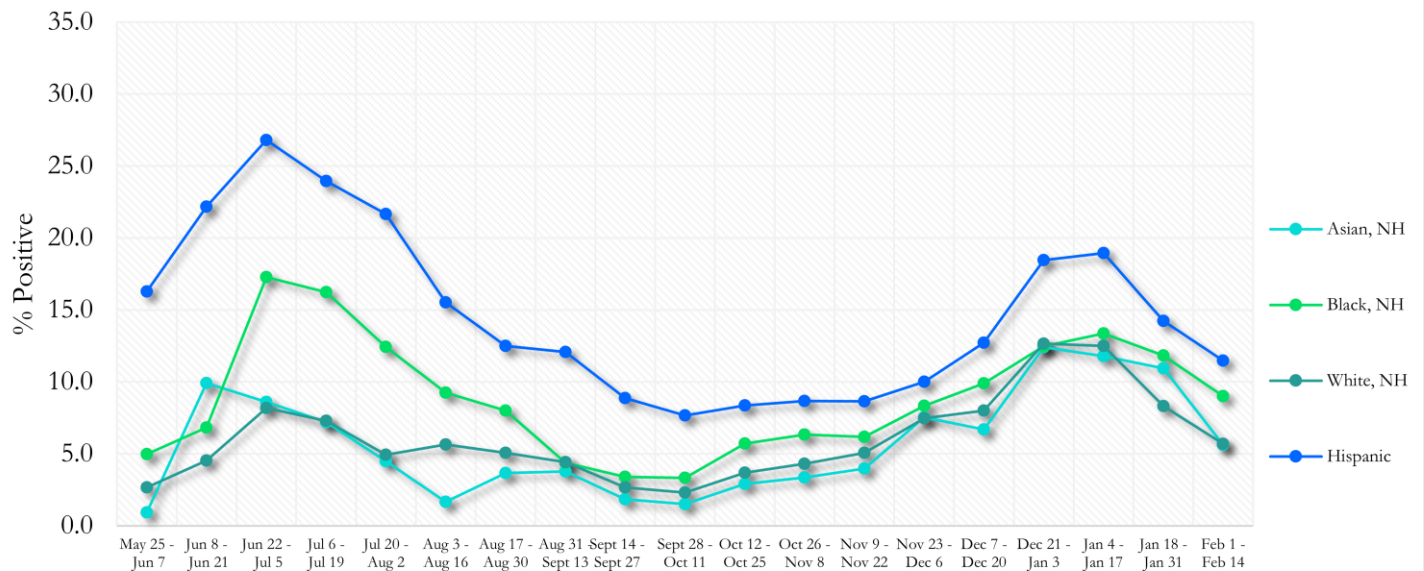
\*Data on Polymerase Chain Reaction (PCR) tests only included.

**Fig. 26. COVID-19 Tests by Race and Ethnicity in Fulton County by 14-day Periods**



\*Data on Polymerase Chain Reaction (PCR) tests only included. For the recent two weeks, 46% of test results did not have race/ethnicity information.

**Fig. 27. Percent Positive COVID-19 Tests by Race and Ethnicity in Fulton County by 14-day Periods**



\*Data on Polymerase Chain Reaction (PCR) tests only included.

## COVID-19 IN LONG-TERM CARE FACILITIES IN FULTON COUNTY

Older persons (aged 65 years and older) and persons who live in nursing homes or other long-term care facilities seem to be at higher risk for developing more serious complications from COVID-19. Extra precautions are recommended for individuals within this risk groups – Centers for Disease Control and Prevention (CDC 2020) <https://www.cdc.gov/coronavirus/2019-ncov/need-extra-precautions/people-at-higher-risk.html>

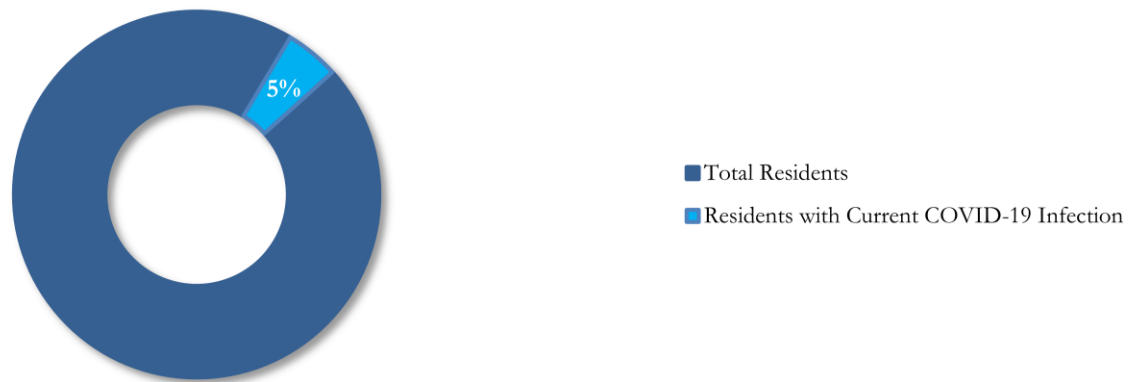
**Fig. 28. Cumulative COVID-19 Diagnoses and Deaths in Fulton County Associated with Long-Term Care Facilities**



\*\*\*LTCF → Long-term Care Facility (Includes residents and Staff)\*\*\*

## CURRENT COVID-19 POSITIVITY:

**Fig. 29. Percentage of LTCF Residents with Current COVID-19 Infection**



\*This data comes from facilities self-reporting to DPH and is thus subject to change as more facilities report or provide updated counts. Current total resident count = 4,132