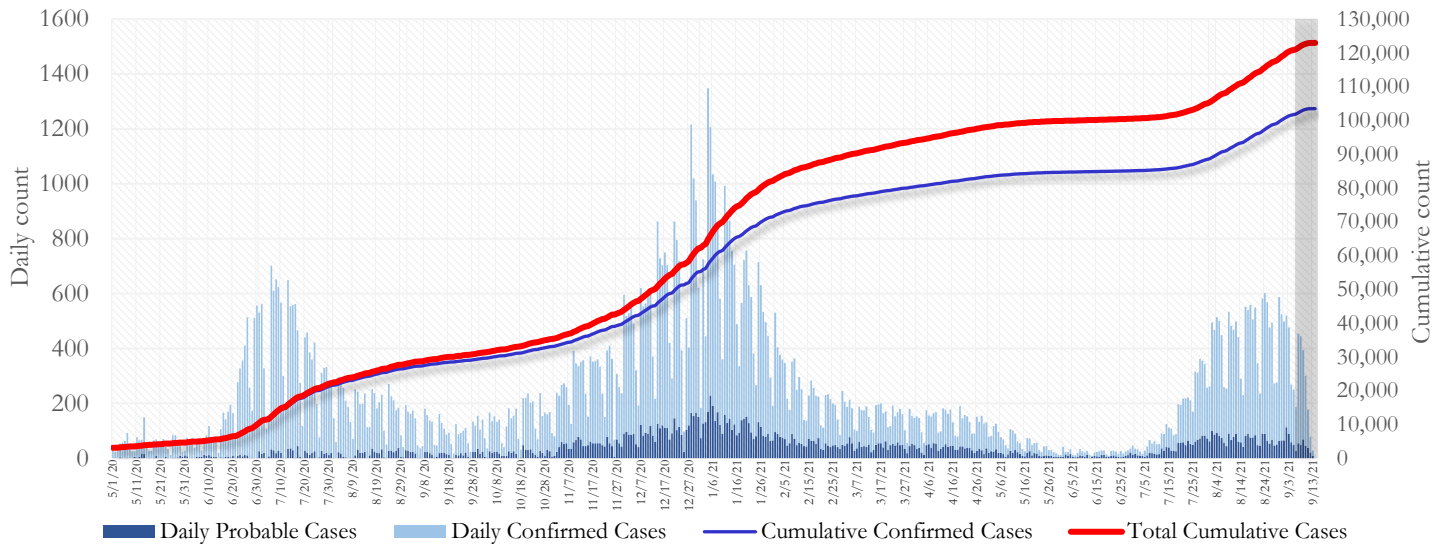


SUMMARY

- As of September 14, 2021, Fulton County has recorded **103,640 confirmed cases** and **19,457 probable cases** of COVID-19.
- Figure 1 shows both confirmed and probable case counts but the ensuing tables and figures use data from **confirmed cases only**.
- As of September 14, 2021, Fulton County has recorded **1,451 confirmed COVID-19 deaths**. 174 deaths are currently under review by GA DPH to confirm cause of death.
- By city, new confirmed COVID-19 case rates range from 304.9 per 100,000 persons (Johns Creek) to 1216.6 per 100,000 persons (Union City). [**Fulton County Diagnoses Rates (per 100,000 persons): Cumulative – 9428.8; Incidence – 500.4**]. See map showing incident case rate by ZIP code on Pg.7.
- Of all PCR testing done in Fulton County between August 30 and September 12, the **percent positivity rate was 10.4%**.

Fig 1. Daily and Cumulative Confirmed and Probable COVID-19 cases in Fulton County, GA



Counts shown reflect the number of cases as of 9:00 am on 9/14/21 using the date of first positive sample collection. Where date of sample collection was not available or missing, the date of report creation in GA SendSS was used instead. The Georgia Department of Health defines a confirmed cases as someone with a positive molecular test, also known as PCR. A probable case is defined as a positive antigen test, though probable cases are still considered positive cases and individuals who tested positive through an antigen test should follow all DPH isolation and quarantine guidance. **Note:** Delays in data reporting may cause changes in data counts, particularly in the shaded portion. Data throughout this report are preliminary and subject to ongoing data cleaning processes, and thus are subject to change.

THE FOLLOWING ANALYSES (PAGES 1-19) ARE USING DATA ON CONFIRMED CASES ONLY.

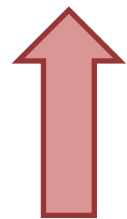
DISTRIBUTION OF COVID-19 CASES BY REGION

New cases: 41% of the new COVID-19 cases in the past 2 weeks occurred in Atlanta while 26% and 30% occurred in the Northern and Southern regions of the county respectively.

Fulton Region	% Cumulative count	% New cases*
Atlanta	42.9%	40.9%
North ¹	32.1%	25.9%
South ²	21.7%	29.6%
Unincorporated/Unknown	3.3%	3.6%

¹Includes all Fulton County cities north of Atlanta (Alpharetta, Johns Creek, Milton, Mountain Park, Roswell, Sandy Springs.) ²Includes all cities south of Atlanta (Chattahoochee Hills, College Park, East Point, Fairburn, Hapeville, Palmetto, South Fulton, and Union City) ***New cases:** Cases diagnosed in the past 2 weeks only (between 8/25/21 – 9/7/21).

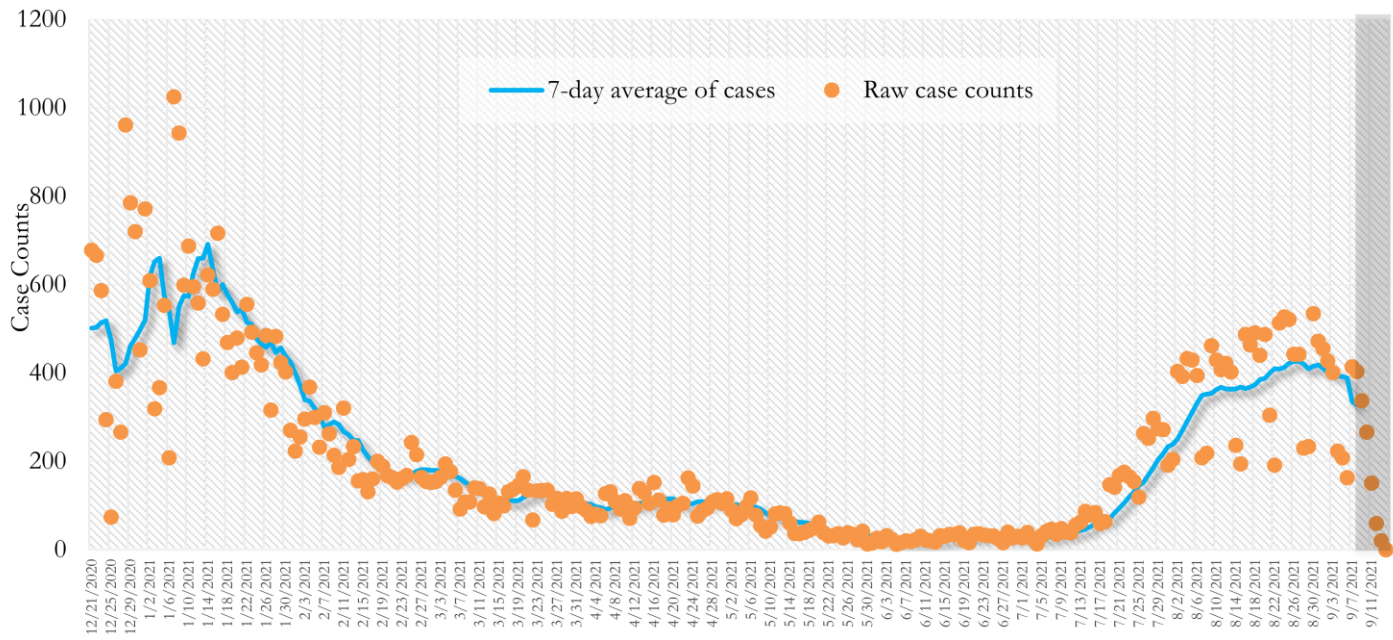
In the recent two week reporting period (8/25-9/7), there were more new cases of COVID-19 in Fulton County than the previous two weeks (8/11-8/24).



**Delayed a week to account for testing results turnaround time.*

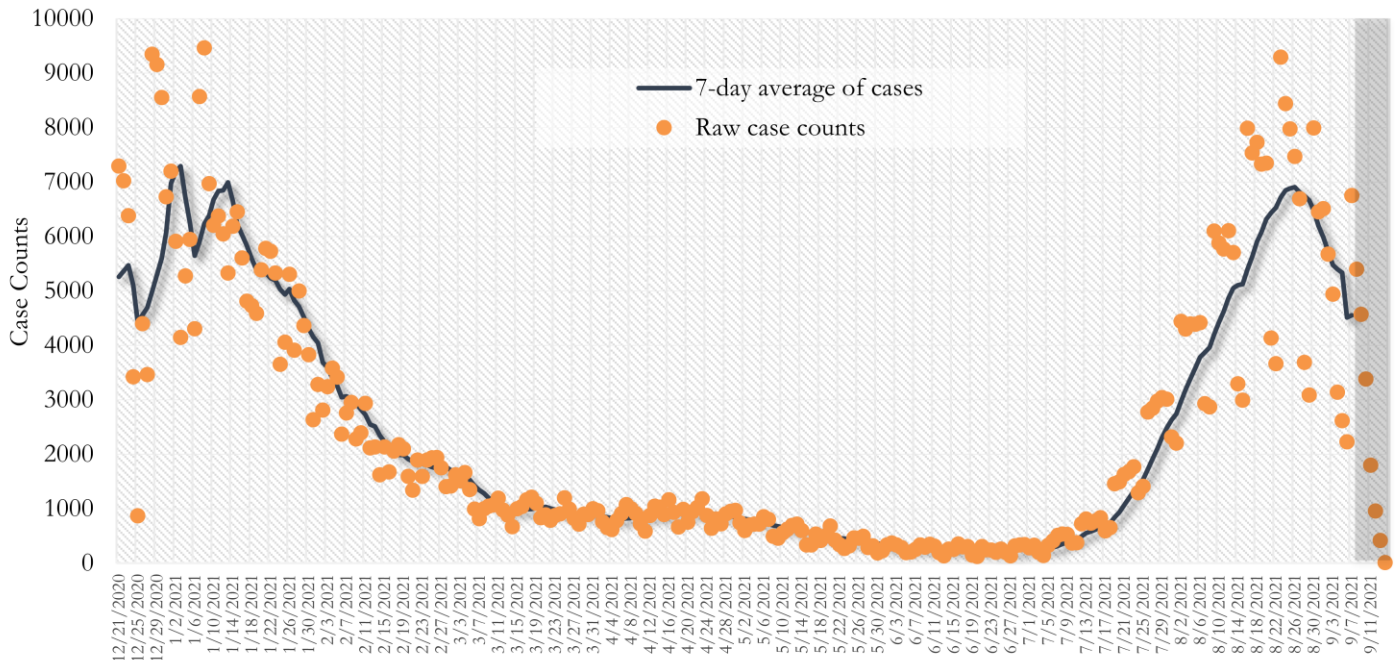
TRENDS IN COVID-19 CASES, HOSPITALIZATIONS AND DEATHS (7-DAY MOVING AVE.)

Fig. 2. New COVID-19 Cases in Fulton County Daily (Averaged over 7 days)



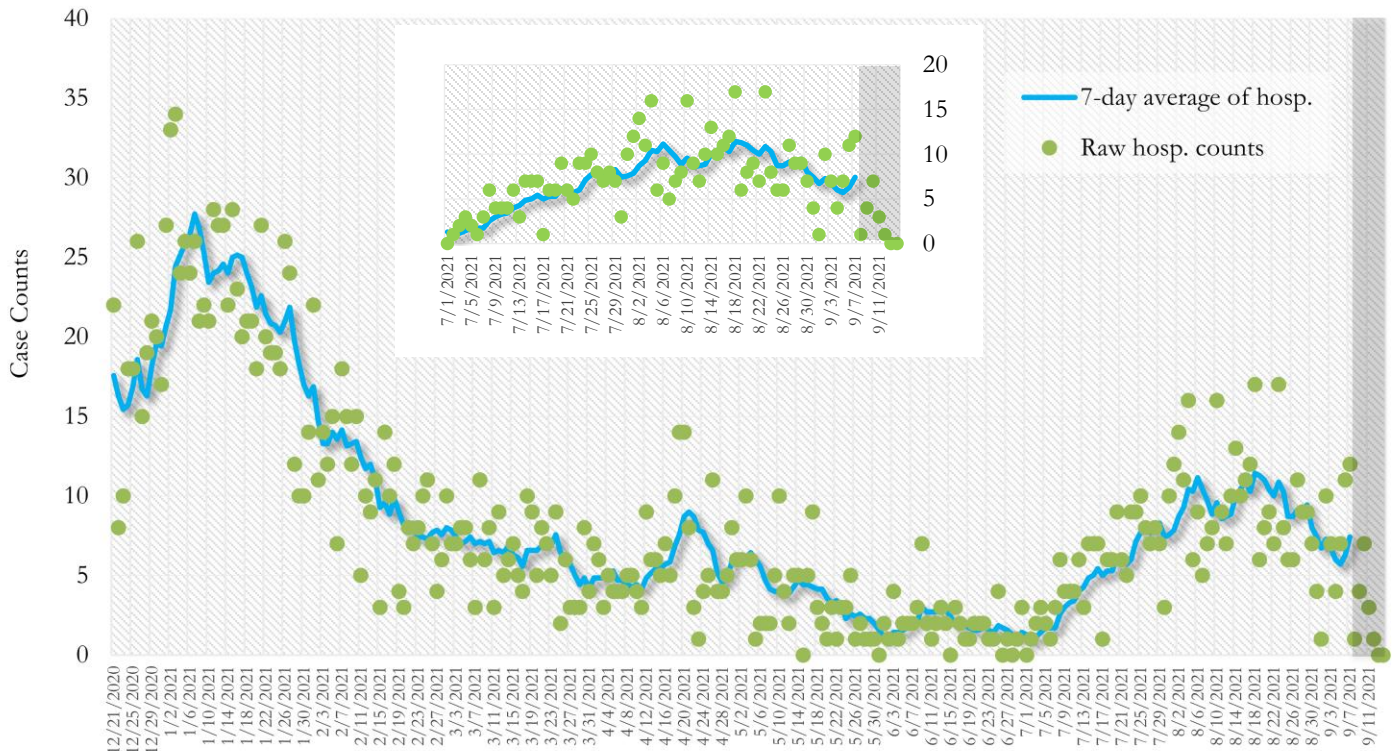
*Date of collection of first positive sample used (report creation date used where sample collection date is missing). Graph above reflects the trend in COVID-19 diagnosis. Due to the high volume of testing in recent weeks, there have been delays in reporting lab results. Thus, the trend is subject to change as more lab results get added to the state surveillance database.

Fig. 3. New COVID-19 Cases in Georgia State Daily (Averaged over 7 days)



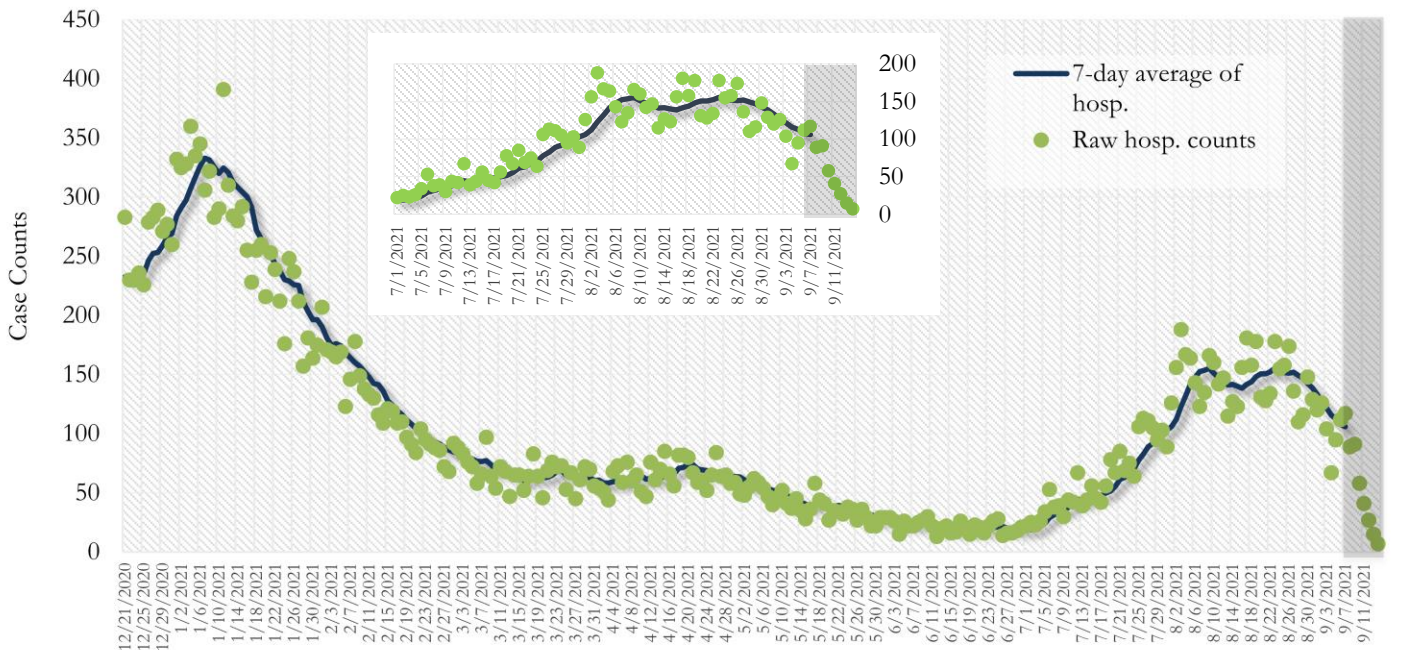
*Date of collection of first positive sample used (report creation date used where sample collection date is missing). Graph above reflects the trend in COVID-19 diagnosis. Due to the high volume of testing in recent weeks, there have been delays in reporting lab results. Thus, the trend is subject to change as more lab results get added to the state surveillance database.

Fig. 4. COVID-19 Hospitalizations in Fulton County Daily (Averaged over 7 days)



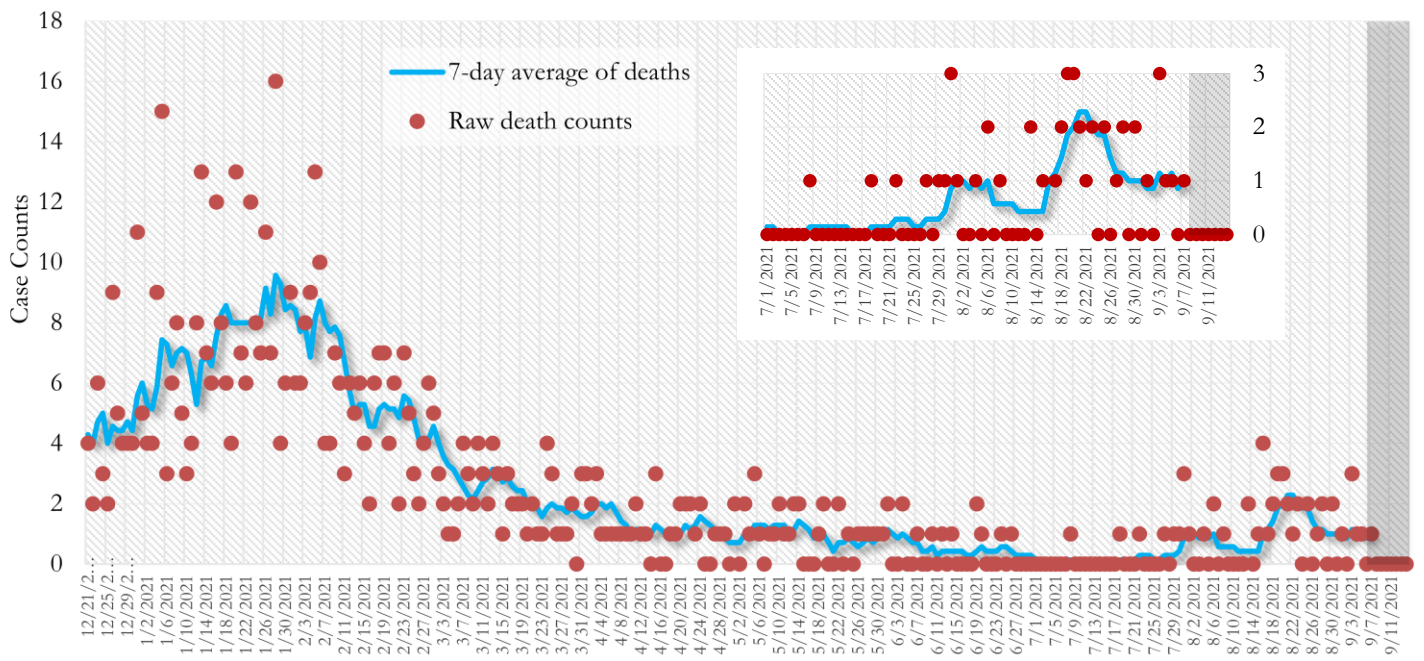
*Reported date of hospital admission used. Graph above reflects the trend in COVID-19 hospitalizations. Due to the high volume of new cases being added daily, there have been delays in reporting hospitalization data. Thus, the trend is likely to change as more hospitalization data is reported in the state surveillance database.

Fig. 5. COVID-19 Hospitalizations in Georgia State Daily (Averaged over 7 days)



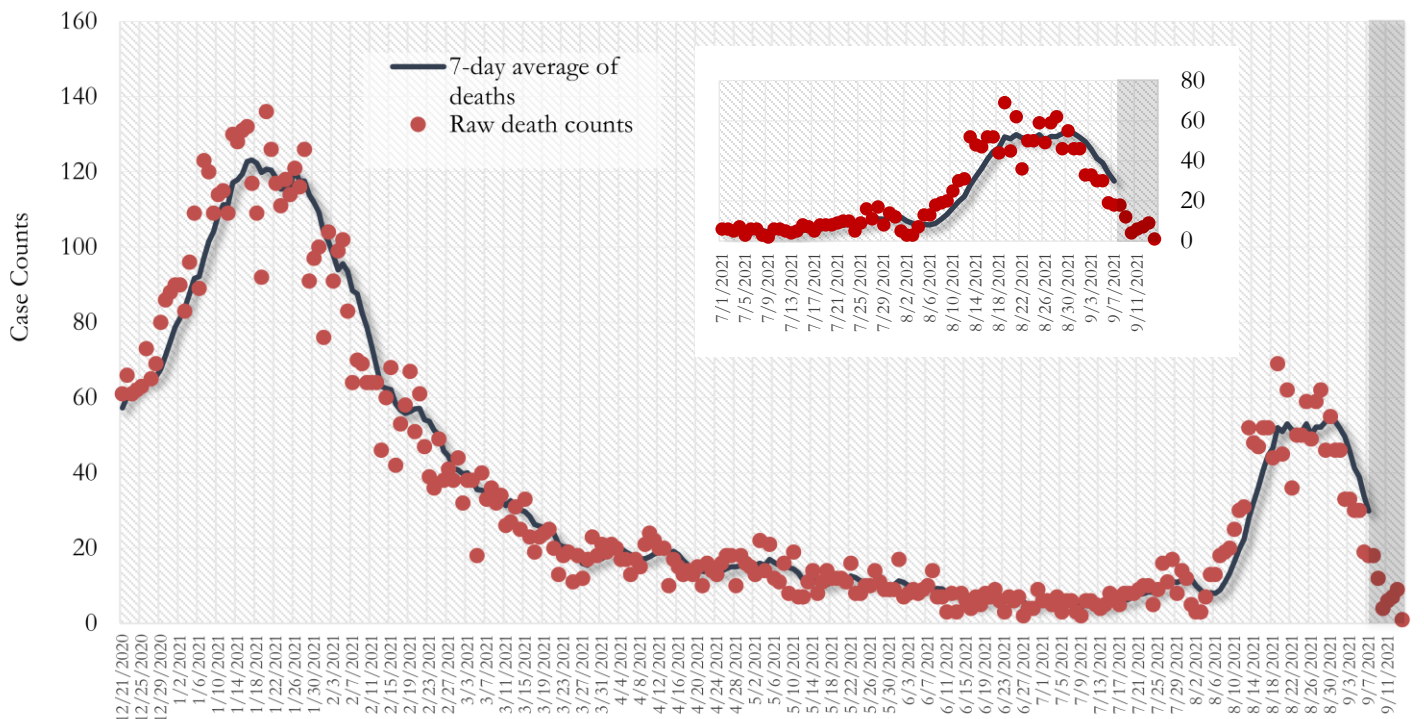
*Reported date of hospital admission used. Graph above reflects the trend in COVID-19 hospitalizations. Due to the high volume of new cases being added daily, there have been delays in reporting hospitalization data. Thus, the trend is likely to change as more hospitalization data is reported in the state surveillance database.

Fig. 6. COVID-19 Deaths in Fulton County Daily (Averaged over 7 days)



*Reported date of death used. Graph above reflects the trend in deaths attributed to COVID-19. The trend is likely to change as more data on deaths among persons with COVID-19 is reported in the state surveillance database.

Fig. 7. COVID-19 Deaths in Georgia State Daily (Averaged over 7 days)



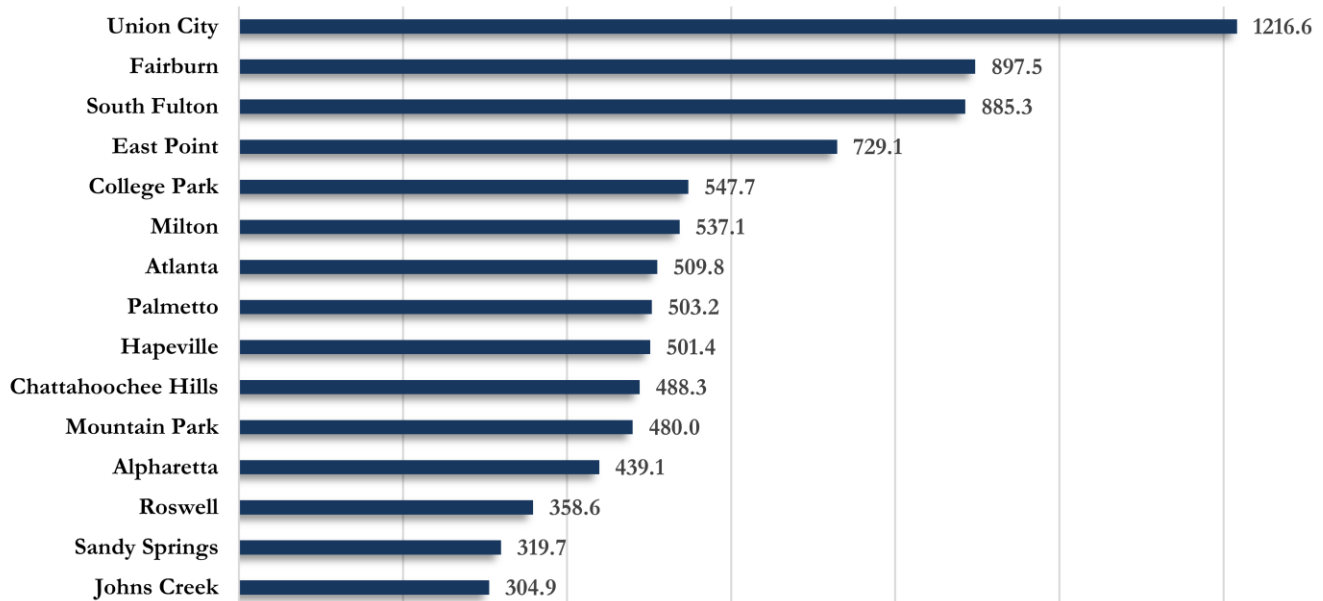
*Reported date of death used. Graph above reflects the trend in deaths attributed to COVID-19. The trend is likely to change as more data on deaths among persons with COVID-19 is reported in the state surveillance database.

COVID-19 CASE COUNTS AND RATES BY CITY

	Recent 14-day reporting period ¹	Preceding 14-day reporting period	% Change from preceding 14 days (%) ²	14-Day Incidence Rate ³
	8/25-9/7	8/11-8/24		
Alpharetta	284	219	↑ 29.7%	439.1
Atlanta	2249	2096	↑ 7.3%	509.8
Chattahoochee Hills	14	13	↑ 7.7%	488.3
College Park	76	89	↓ 14.6%	547.7
East Point	255	233	↑ 9.4%	729.1
Fairburn	132	106	↑ 24.5%	897.5
Hapeville	33	41	↓ 19.5%	501.4
Johns Creek	255	240	↑ 6.3%	304.9
Milton	205	132	↑ 55.3%	537.1
Mountain Park	<10	<10	↑ 50.0%	480.0 ⁴
Palmetto	22	42	↓ 47.6%	503.2
Roswell	338	286	↑ 18.2%	358.6
Sandy Springs	337	305	↑ 10.5%	319.7
South Fulton	842	698	↑ 20.6%	885.3
Union City	255	213	↑ 19.7%	1216.6
Unknown	200	167	-	-

¹**New cases:** Cases diagnosed in most recent 14 days (based on reported dates of positive sample collection). To allow for lag in reporting results of new diagnoses from samples collected in the most recent week, data used for incident diagnoses analyses were moved back by one week. ²**% change:** These reflect the percentage increase or decrease in new diagnoses between the 14 days preceding the most recent 7 days and the 14 days preceding that. ³**(Incidence) Rate:** Rate of new diagnoses in the last 14 day period preceding the immediate past week. ****Data cleaning** (either during case interviews or address geo-coding) may lead to reassignment of few cases from one territory to another based on their corrected addresses. These may appear as "decreases" when compared to the previous counts. These do not reflect errors in the data collection or analysis process but only reflect the minor day-to-day fluctuations in case counts that arise in an evolving public health database like COVID's. ⁴Incidence rate is skewed high due to small population. **Note:** All data reported are preliminary and subject to change.

Fig. 8. Incidence Rates by Fulton City for Recent 14-day Reporting Period



*Rates shown are per 100,000 persons | All data shown are preliminary and are subject to change as testing results get updated.

Fig. 9. Density Map – New COVID-19 Cases (August 25 – September 7, 2021) in Fulton County

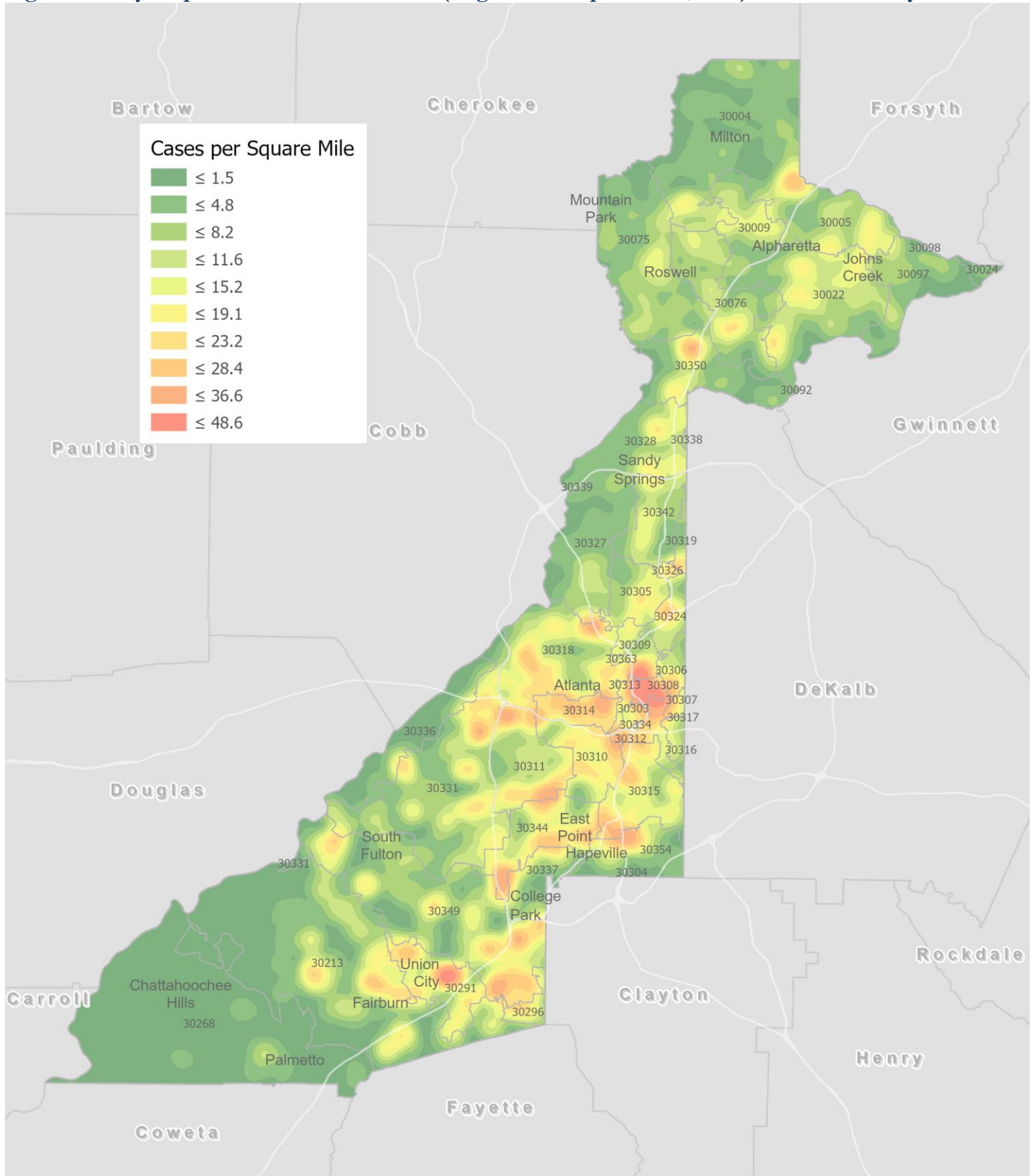
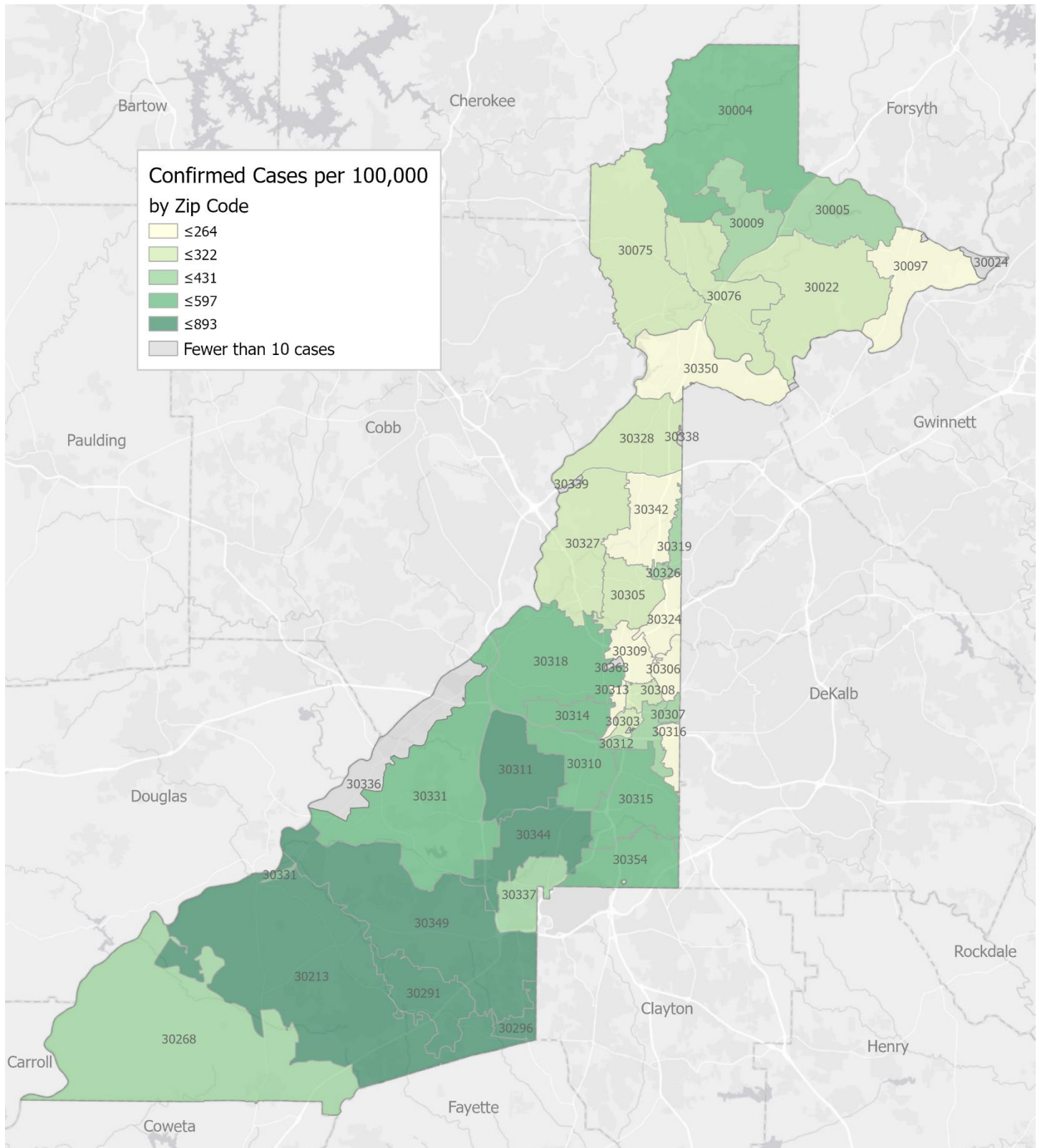


Fig. 10. New COVID-19 Diagnoses Rates (per 100,000 population) by Zip Code (August 25 – September 7, 2021)



*Rates shown are per 100,000 populations.

New COVID-19 cases: Cases diagnosed in most recent 14 days (based on reported dates of positive sample collection). To allow for lag in reporting results of positive cases from samples collected in the immediate past 7 days, data used for incident diagnoses analyses are moved back by one week. Data used excludes outbreak-related cases at long-term care facilities and map shown reflects only the new non-LTCF cases diagnosed between the dates shown in map title. See page 8 for zip code break down table.

COVID-19 NEW CASE¹ COUNTS BY ZIP CODE

Zip Code	Recent 14-day reporting period (8/25– 9/7)	Previous 14-day reporting period (8/11– 8/24)	% Change between reporting periods ²
All Fulton	5500	4883	↑ 12.6%
30004	264	207	↑ 27.5%
30005	147	117	↑ 25.6%
30009	83	67	↑ 23.9%
30022	239	210	↑ 13.8%
30023	<10	0	-
30024	<10	<10	-
30075	172	156	↑ 10.3%
30076	154	124	↑ 24.2%
30080	0	0	-
30097	65	43	↑ 51.2%
30098	0	0	-
30135	0	0	-
30138	0	0	-
30139	0	0	-
30213	363	261	↑ 39.1%
30268	38	63	↓ 39.7%
30291	232	216	↑ 7.4%
30296	39	39	-
30301	<10	0	-
30303	38	17	↑ 123.5%
30305	95	99	↓ 4.0%
30306	45	31	↑ 45.2%
30307	26	15	↑ 73.3%
30308	87	64	↑ 35.9%
30309	98	94	↑ 4.3%
30310	153	161	↓ 5.0%
30311	232	237	↓ 2.1%
30312	104	128	↓ 18.8%
30313	46	15	↑ 206.7%
30314	144	113	↑ 27.4%
30315	231	211	↑ 9.5%
30316	43	58	↓ 25.9%
30318	362	321	↑ 12.8%
30319	26	12	↑ 116.7%
30321	0	0	-
30324	69	66	↑ 4.5%
30326	23	30	↓ 23.3%
30327	100	90	↑ 11.1%
30328	122	115	↑ 6.1%
30331	404	360	↑ 12.2%
30334	<10	<10	-
30336	13	15	↓ 13.3%
30337	52	80	-

Zip Code	Recent 14-day reporting period (8/25– 9/7)	Previous 14-day reporting period (8/11– 8/24)	% Change between reporting periods
30338	<10	<10	-
30339	37	22	↑ 68.2%
30340	0	0	-
30341	0	0	-
30342	103	95	↑ 8.4%
30344	245	206	↑ 18.9%
30345	<10	0	-
30349	516	433	↑ 19.2%
30350	115	119	↓ 3.4%
30354	102	117	↓ 12.8%
30358	0	0	-
30363	<10	12	↓ 41.7%
30374	<10	<10	-
30606	0	0	-
31131	<10	0	-
31150	0	0	-
Unknown	43	32	-

¹**New cases:** Cases diagnosed in most recent 28 days (based on reported dates of positive sample collection). To allow for lag in reporting results of new diagnoses from samples collected in the most recent week, data used for incident diagnoses analyses were moved back by one week. ²**Percent change:** These reflect the percentage increase or decrease of new diagnoses between the 14 days preceding the past 7 days and the 14 days preceding that. Changes in ZIP codes with less than 10 cases in both 2 week intervals are not reported.

COVID-19 HOSPITALIZATIONS, ICU ADMISSIONS AND DEATHS IN FULTON

Fig. 11. Fulton County Covid-19 Cases Hospitalized and Admitted to ICU by Month

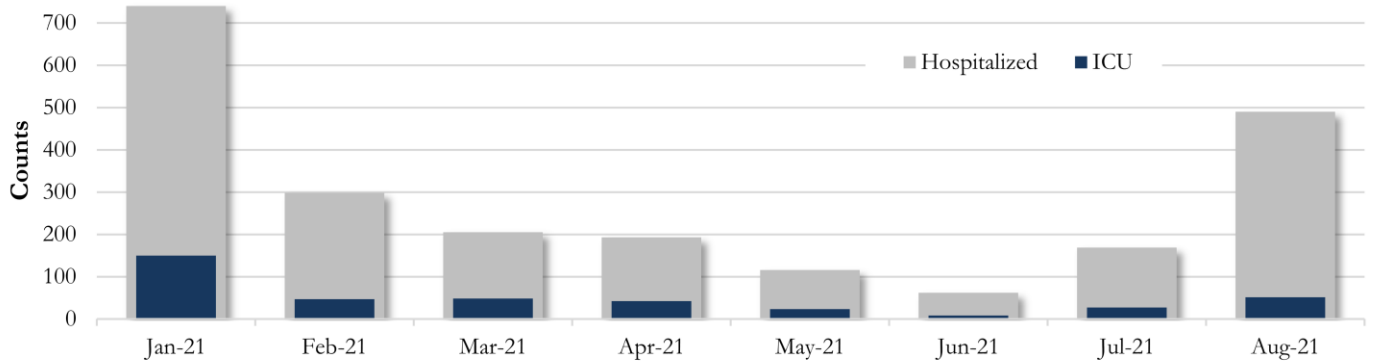
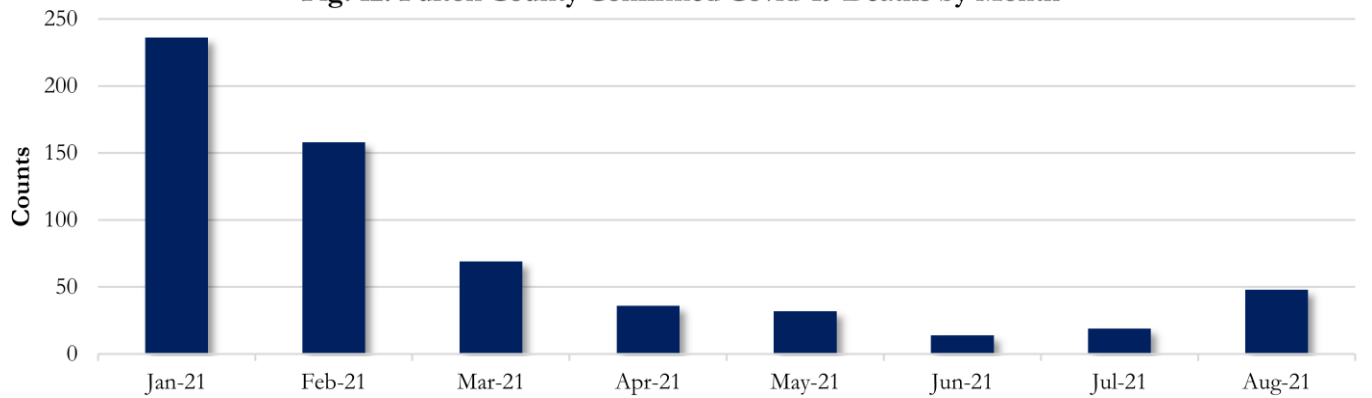
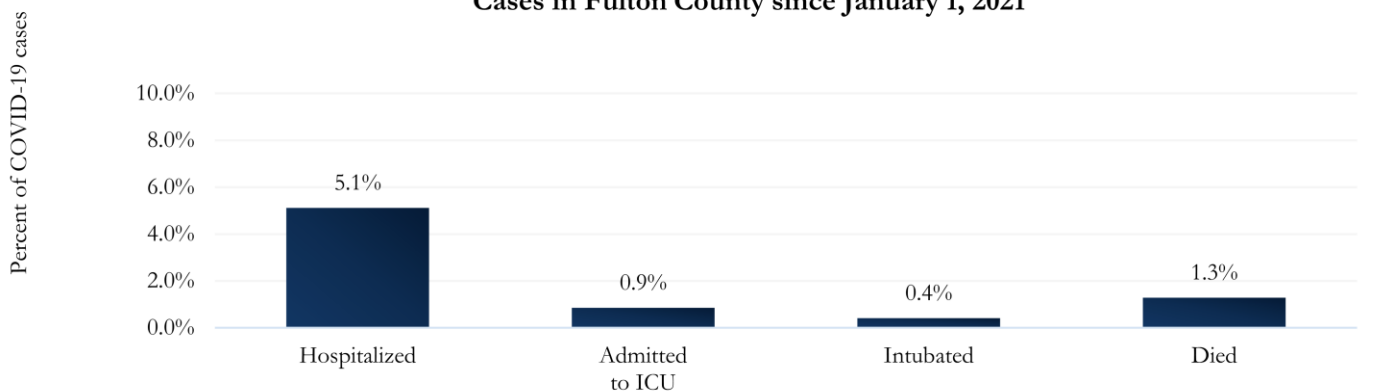


Fig. 12. Fulton County Confirmed Covid-19 Deaths by Month



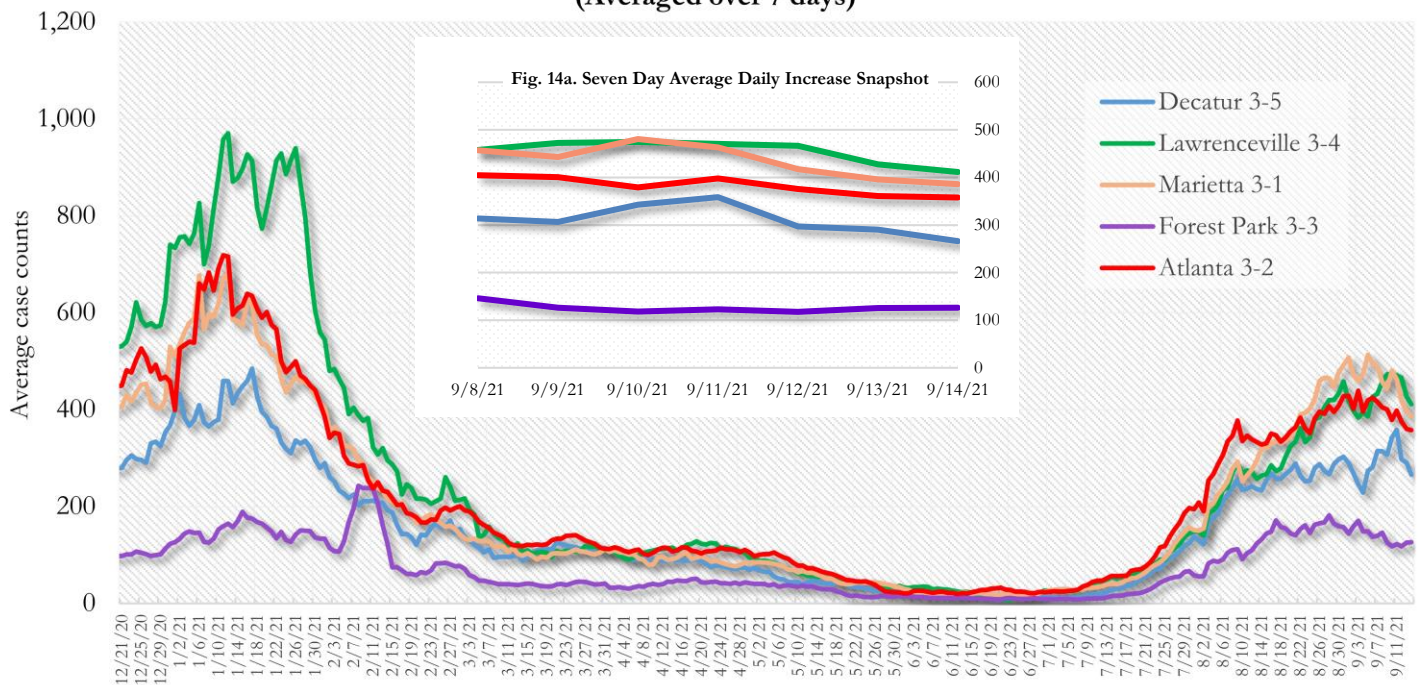
Values for July and August 2021 in figures 13 and 14 are subject to change as more hospitalizations, ICU admissions, and deaths get reported to state and local entities.

Fig. 13. Hospitalizations, ICU Admissions, Intubations, and Deaths among all Covid-19 Cases in Fulton County since January 1, 2021



COVID-19 CASE TRENDS IN FULTON AND SURROUNDING DISTRICTS

**Fig. 14. Daily Case Counts for Atlanta Metro Districts
(Averaged over 7 days)**



DEMOGRAPHIC DISTRIBUTIONS – COVID-19 CASES AND DEATHS

Table A - Cumulative and recent confirmed Covid-19 case and death counts by gender, age, and race/ethnicity in Fulton County, Georgia. Past 28 day period refers to August 11 – September 7, 2021

	Total Confirmed Cases	% of Total Cases	Confirmed Cases past 28 days	% of Confirmed Cases past 28 days	Total Confirmed Deaths	% of Total Deaths	Confirmed Deaths past 28 days	% of Confirmed Deaths past 28 days
TOTAL	103640		10383		1451		41	
Female	55089	53.2%	5686	54.8%	692	47.7%	18	43.9%
Male	48098	46.4%	4611	44.4%	759	52.3%	23	56.1%
Unknown*	453	<1%	86	<1%	0	-	0	-
0-9	5209	5.0%	1292	12.4%	0	-	0	-
10-19	12204	11.8%	2137	20.6%	<10	<1%	0	-
20-29	22614	21.8%	1640	15.8%	<10	<1%	0	-
30-39	19832	19.1%	1769	17.0%	31	2.1%	<10	4.9%
40-49	15533	15.0%	1413	13.6%	47	3.2%	<10	7.3%
50-59	13388	12.9%	1011	9.7%	140	9.6%	<10	22.0%
60-69	7849	7.6%	646	6.2%	267	18.4%	<10	14.6%
>70	6945	6.7%	455	4.4%	960	66.2%	21	51.2%
Unknown*	66	<1%	20	<1%	0	-	0	-
Asian, NH	3851	3.7%	328	3.2%	24	1.7%	0	-
Black, NH	45598	44.0%	5236	50.4%	904	62.3%	28	68.3%
White, NH	32557	31.4%	1942	18.7%	457	31.5%	11	26.8%
Hispanic, all races	10329	10.0%	656	6.3%	60	4.1%	<10	4.9%
Other, NH	3398	3.3%	302	2.9%	<10	<1%	0	-
Unknown*	7907	7.6%	1919	18.5%	0	-	0	-

*Unknown includes cases not yet interviewed. 28 days delayed by seven to account for lag in reporting lab results. Deaths refer to all persons who had a positive PCR test result for Covid-19 and there is evidence that Covid-19 was the cause of death or a significant contributor to their death.

The following data are updated every two weeks.

Last updated 9/14/2021

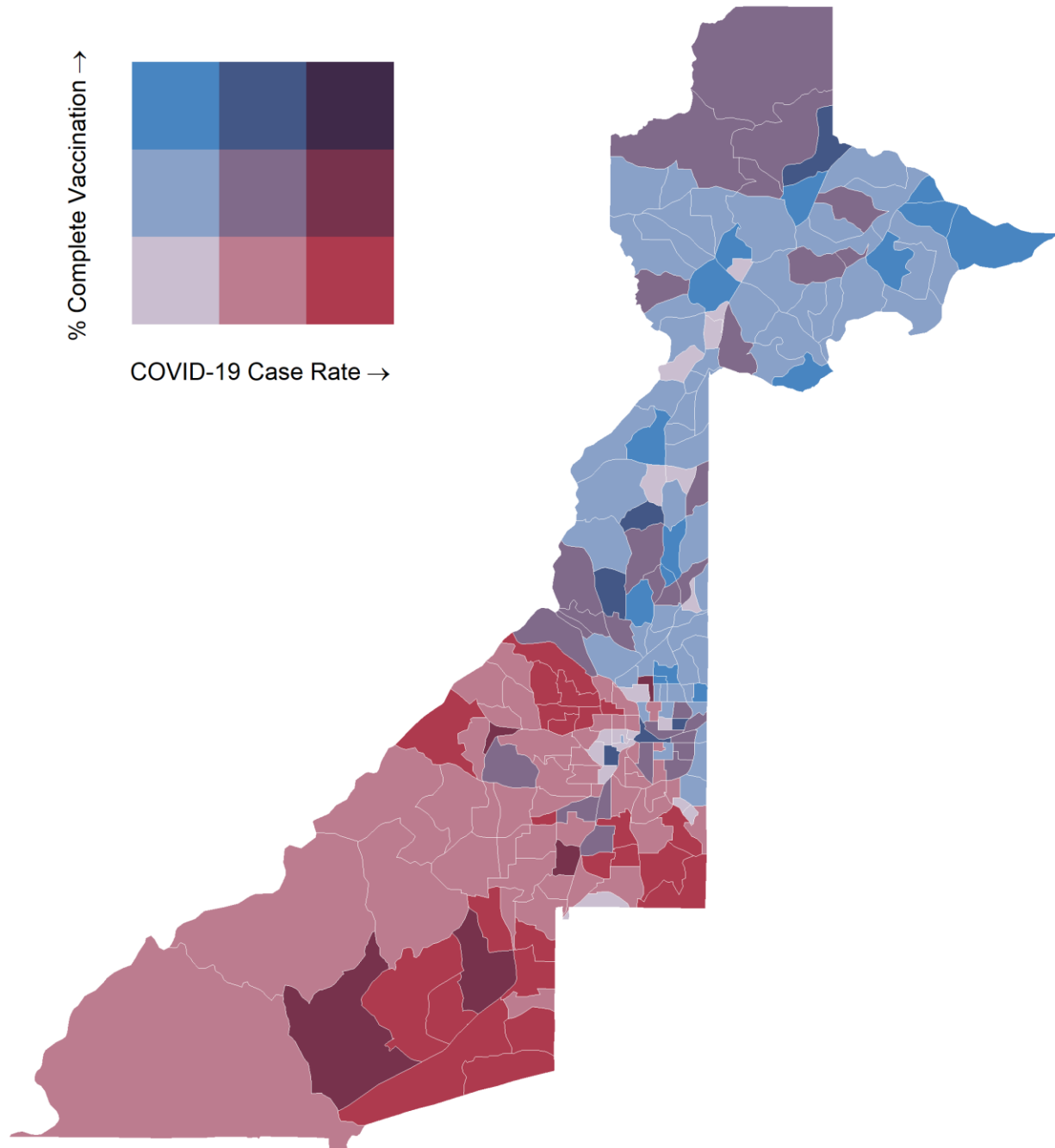
Data are from confirmed cases and PCR testing only.

These data are generated using a fixed start date and counted forward in 14-day intervals. Using these time blocks allows for the stability in trends over time and accounts for delays in reporting lab results.

In the interest of keeping the reports concise and useful, the cumulative counts updated on a monthly basis can now be viewed between updates at the Fulton County Board of Health website [here](#).

Please visit the Georgia Department of Public Health Daily Status Report [here](#) for cumulative daily counts.

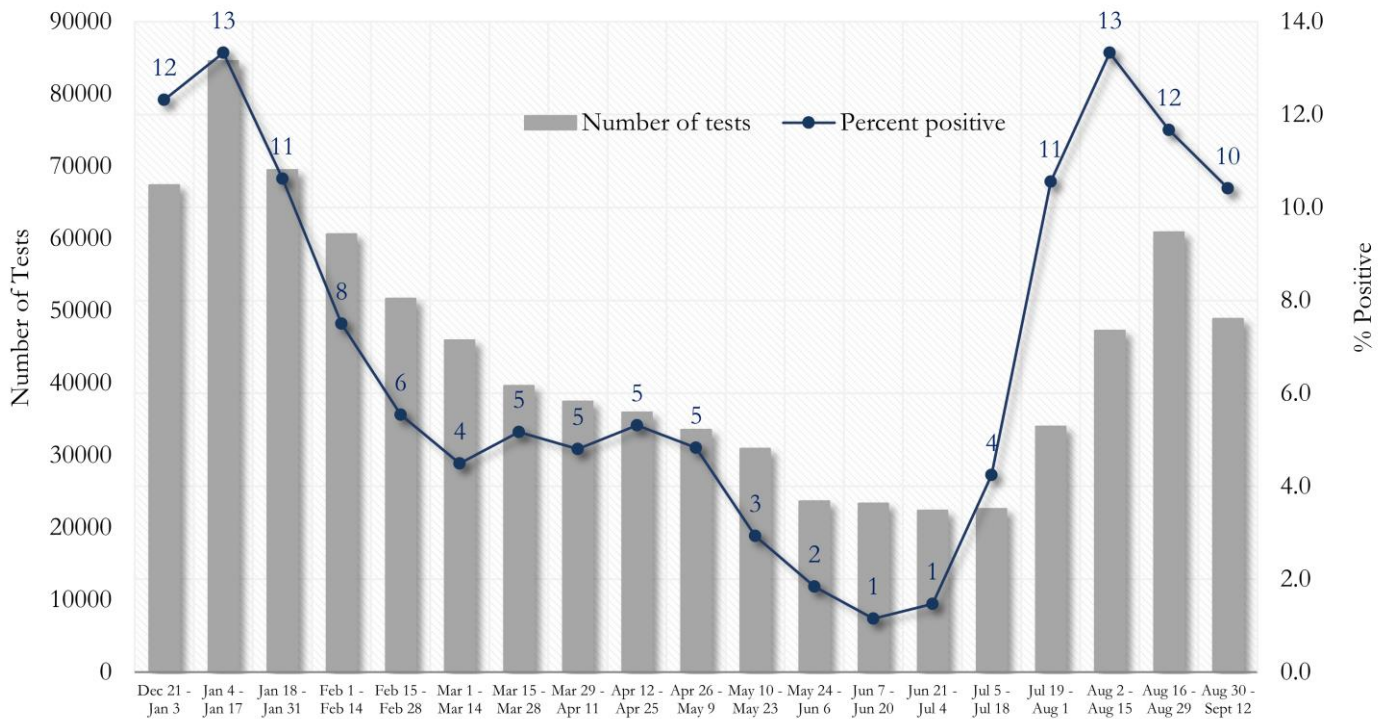
Fig. 15. Percent Complete Vaccination and COVID-19 Case Rate (per 100,000 population) by Census Tract August 16 – September 12, 2021



How to interpret these colors: The darker the blue, the better. The upper most blue box indicates low COVID-19 case rates and high vaccination coverage. Red is not ideal as red indicates high COVID-19 case rates and low vaccination coverage. Colors in between indicate varying combinations of COVID-19 case rates and vaccination coverage. COVID-19 case rate reflects new COVID-19 cases diagnosed between August 16th and September 12th, 2021 across Fulton County. Vaccination data from: <https://experience.arcgis.com/experience/3d8eea39f5c1443db1743a4cb8948a9c>

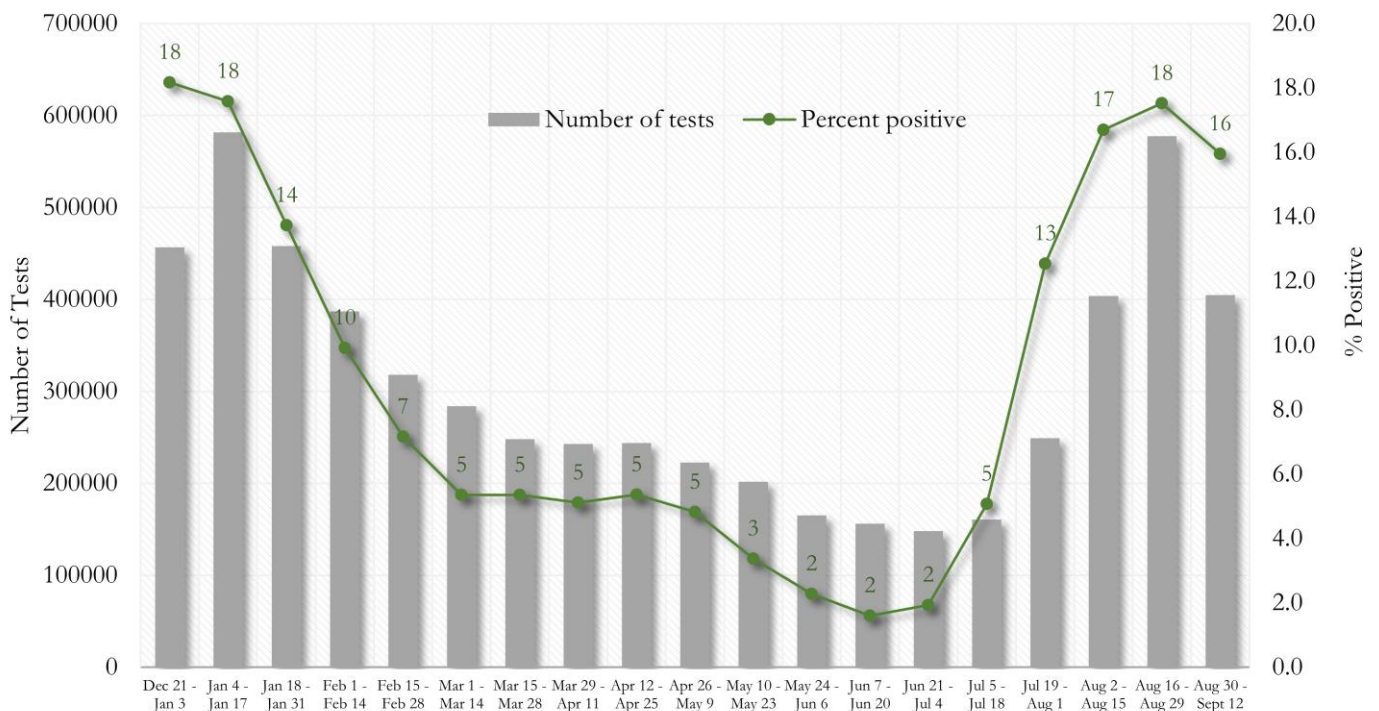
COVID-19 TESTING AND POSITIVITY IN FULTON COUNTY AND GEORGIA

Fig. 16. Trends in Positive Covid-19 Tests in Fulton County by 14-day Periods



*Data on Polymerase Chain Reaction (PCR) tests only included.

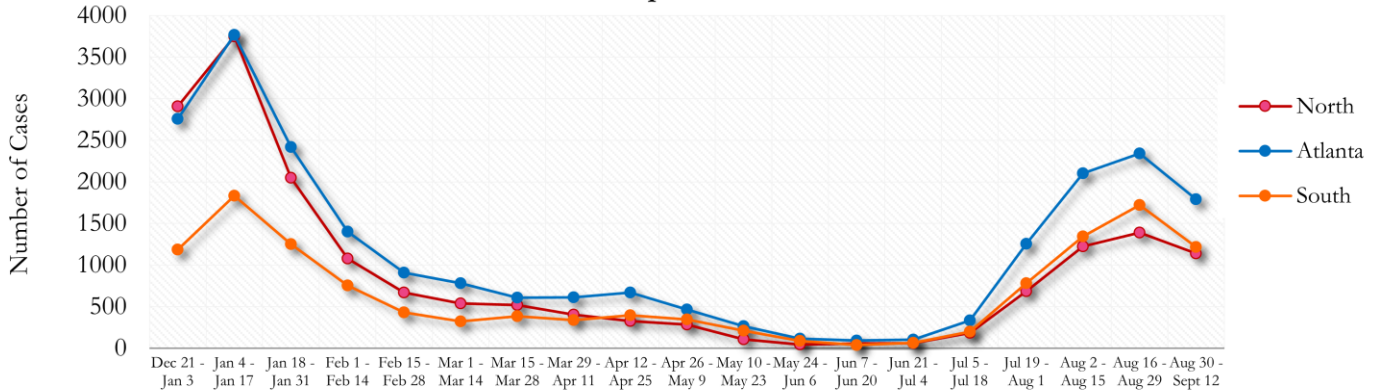
Fig. 17. Trends in Positive Covid-19 Tests in Georgia by 14-day Periods



*Data on Polymerase Chain Reaction (PCR) tests only included.

TRENDS IN COVID-19 CASES AMONG DEMOGRAPHIC GROUPS (14 DAY PERIODS)

Fig. 18. Trends in Geographic distribution of Covid-19 Cases in Fulton County by 14-day periods



In the past two weeks, Atlanta accounted for the majority of new cases.

*North - Includes all Fulton cities north of Atlanta (Alpharetta, Johns Creek, Milton, Mountain Park, Roswell, Sandy Springs)

*South - Includes all Fulton cities south of Atlanta (Chattahoochee Hills, College Park, East Point, Fairburn, Hapeville, Palmetto, South Fulton, and Union City)

Fig. 19. Trends in Racial Distribution of Covid-19 Cases in Fulton County by 14-day periods

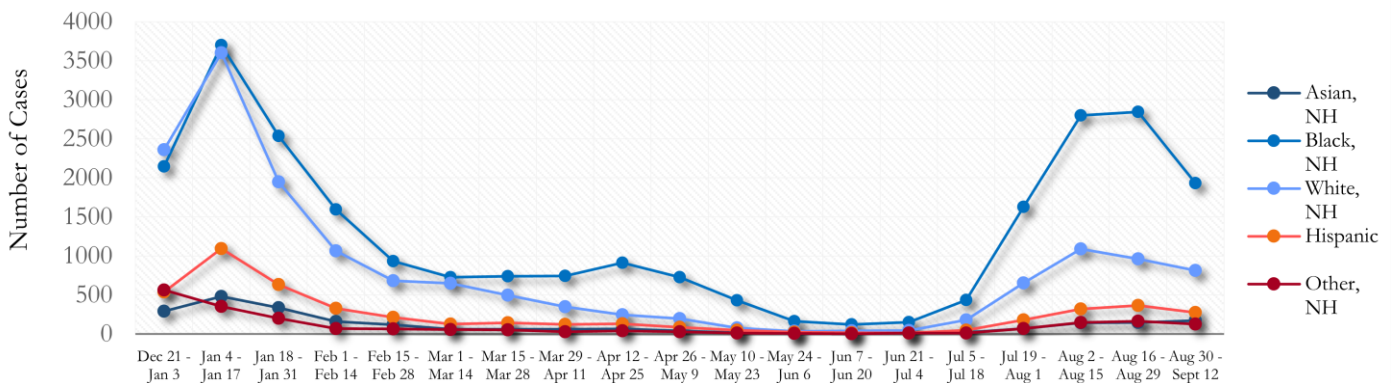
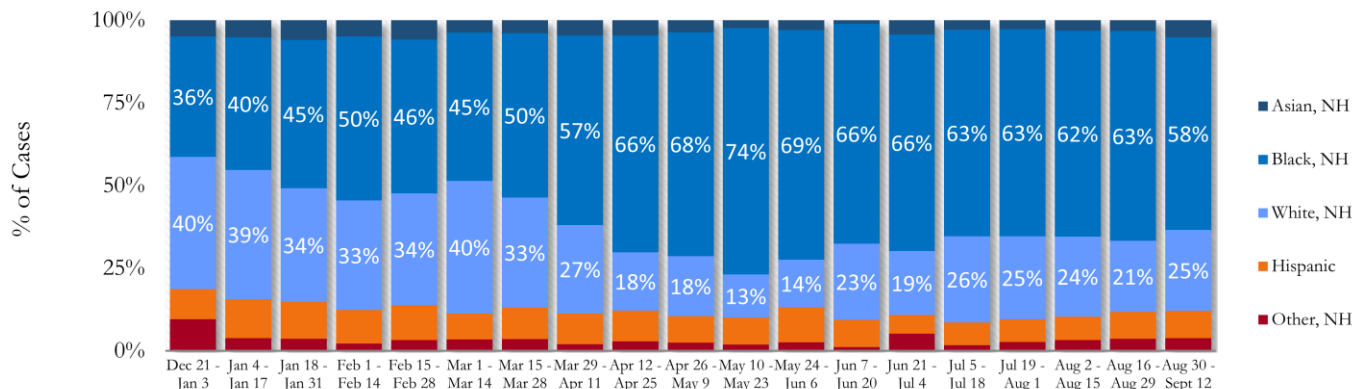


Fig. 20. Racial Distribution of Covid-19 Cases in Fulton County by 14-day periods



About 8% of all Fulton County COVID cases are missing data on patient race and ethnicity and in the past two weeks, about 24% of cases are missing this data. Percentages do not include the missing data and thus are subject to change as data are cleaned.

Fig. 21. Trends in Gender Distribution of Covid-19 Cases in Fulton County by 14-day periods

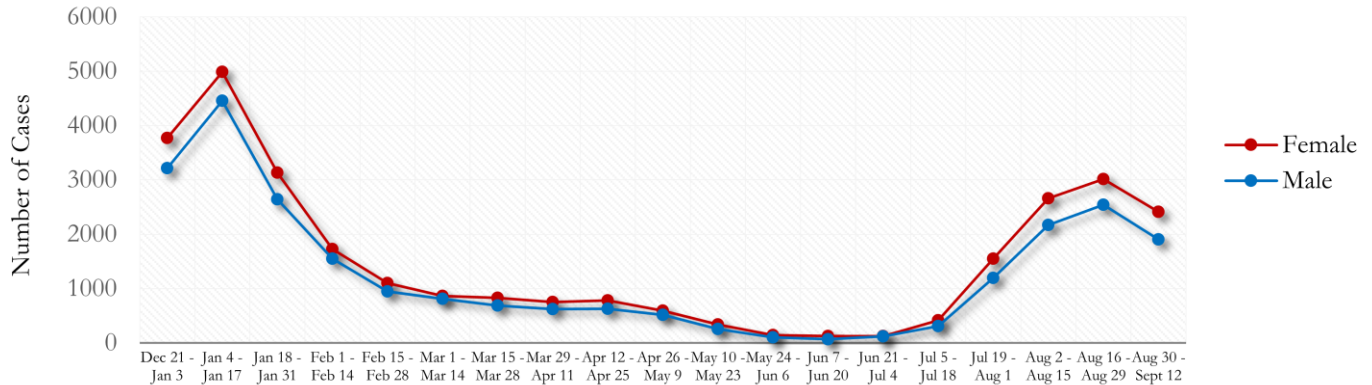
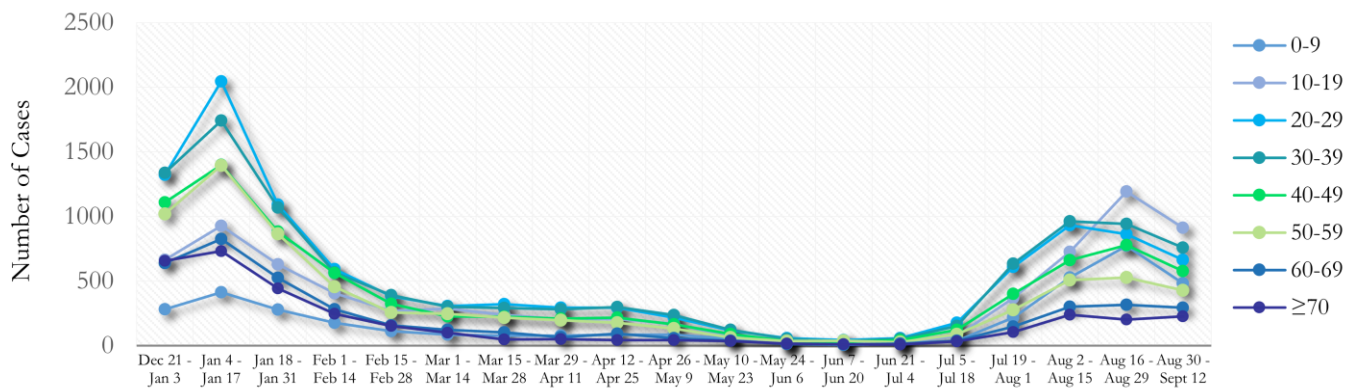
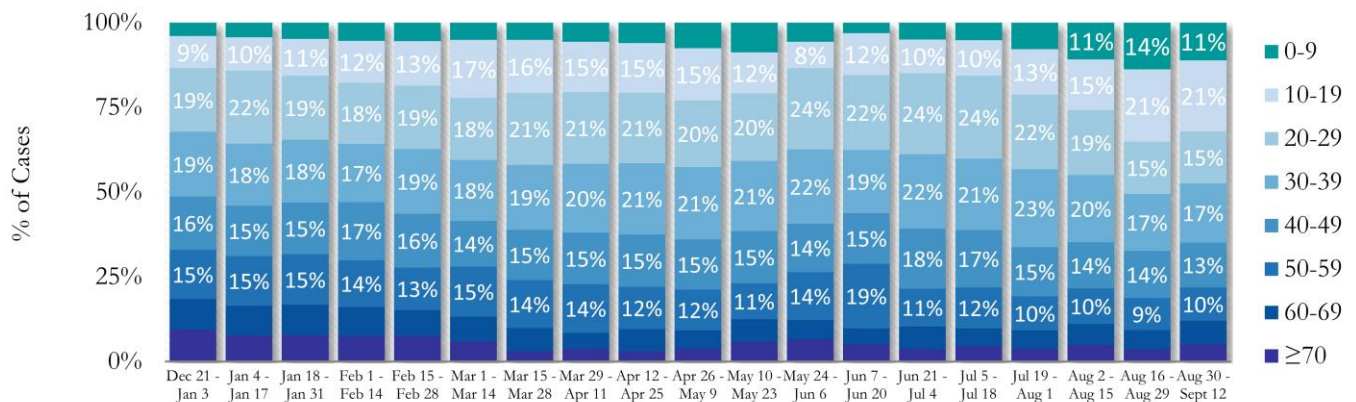


Fig. 22. Trends in Age Distribution of Covid-19 Cases in Fulton County by 14-day periods



In the most recent two weeks, 10-19 year olds and 30-39 year olds accounted for the majority of new cases.

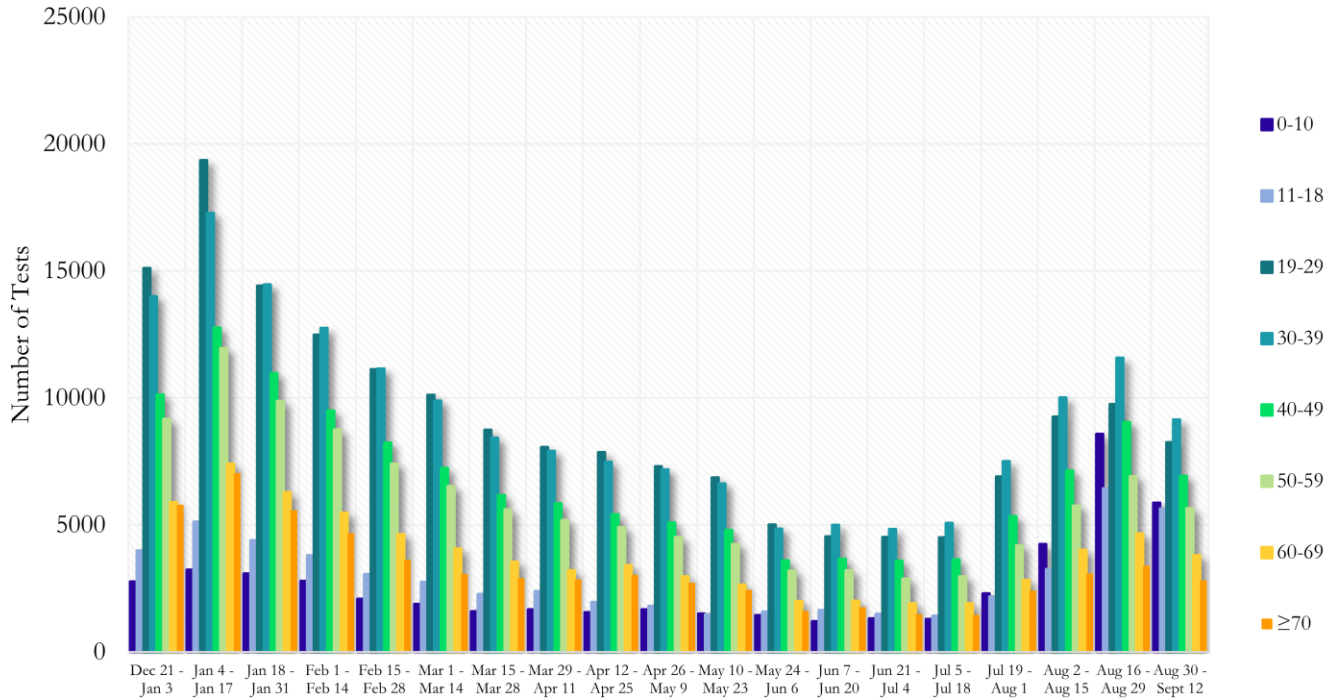
Fig. 23. Age Distribution of Covid-19 Cases in Fulton County by 14-day periods



Value labels under 10% are not shown. Percentages do not include the missing data and thus are subject to change as data are cleaned.

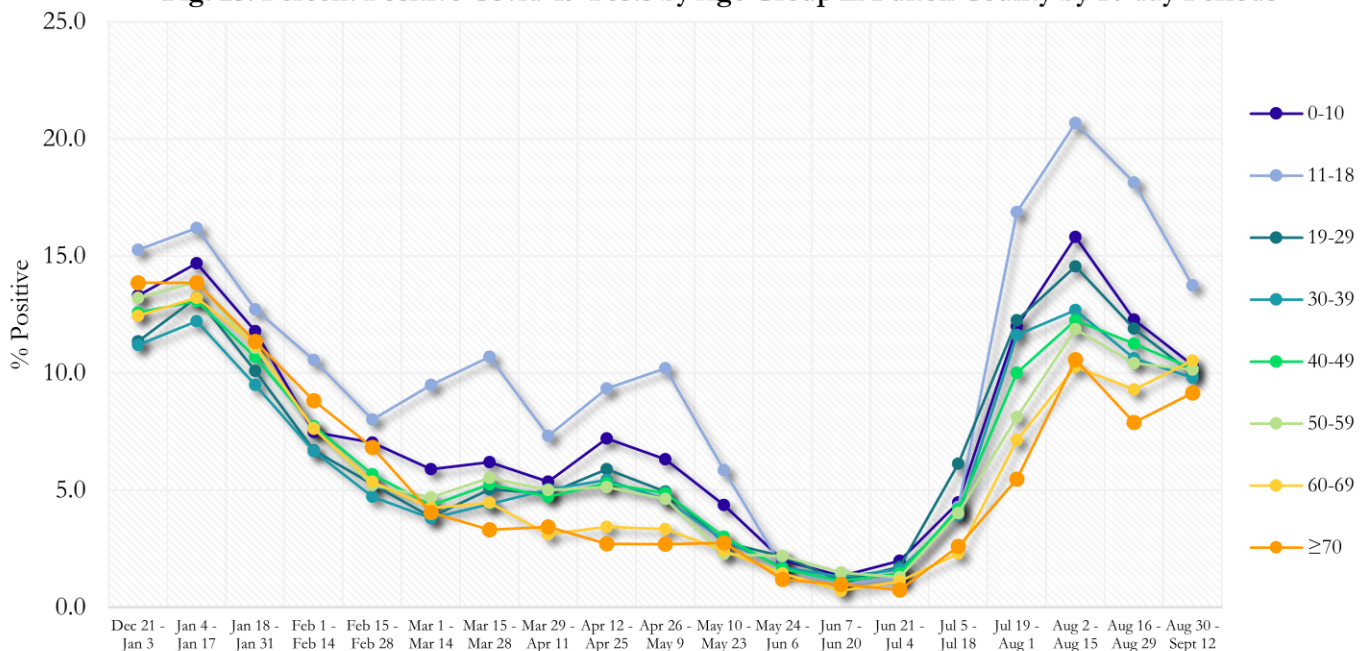
COVID-19 TESTING AND POSITIVITY IN FULTON COUNTY BY AGE AND RACE

Fig. 24. Covid-19 Tests by Age in Fulton County by 14-day Periods



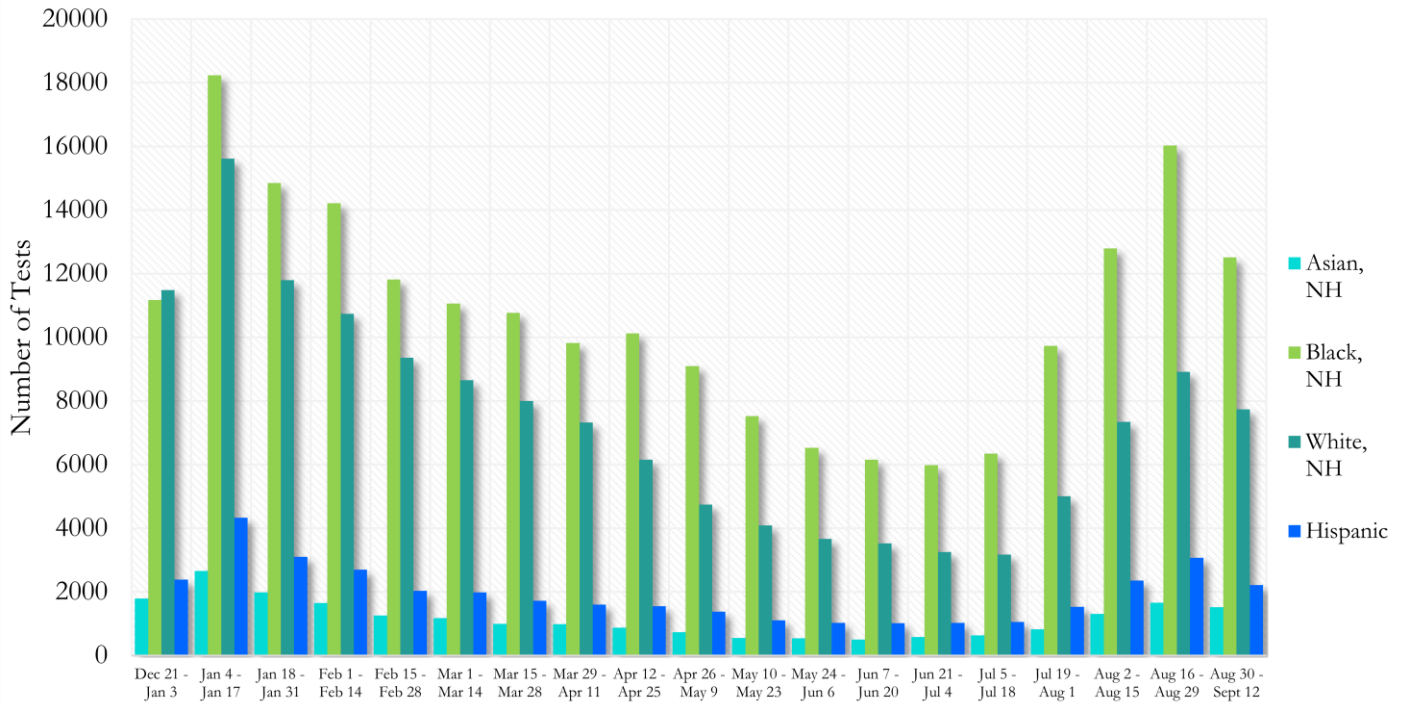
*Data on Polymerase Chain Reaction (PCR) tests only included.

Fig. 25. Percent Positive Covid-19 Tests by Age Group in Fulton County by 14-day Periods



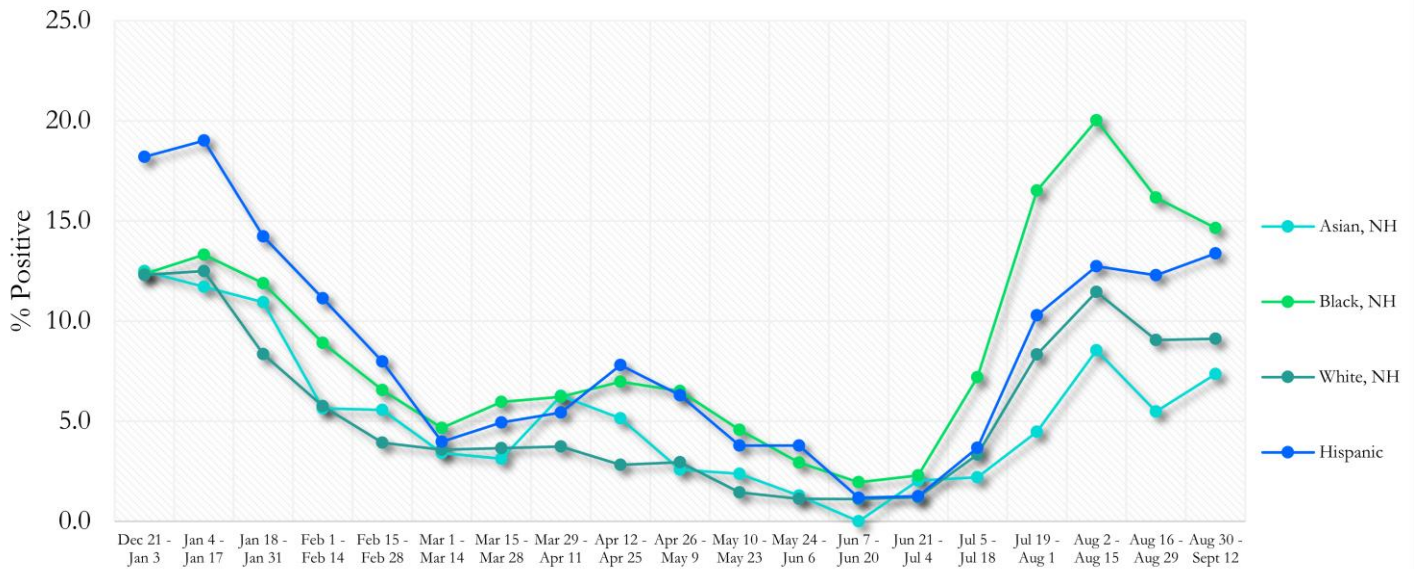
*Data on Polymerase Chain Reaction (PCR) tests only included.

Fig. 26. Covid-19 Tests by Race and Ethnicity in Fulton County by 14-day Periods



*Data on Polymerase Chain Reaction (PCR) tests only included. For the recent two weeks, 51% of test results did not have race/ethnicity information.

Fig. 27. Percent Positive Covid-19 Tests by Race and Ethnicity in Fulton County by 14-day Periods



*Data on Polymerase Chain Reaction (PCR) tests only included.