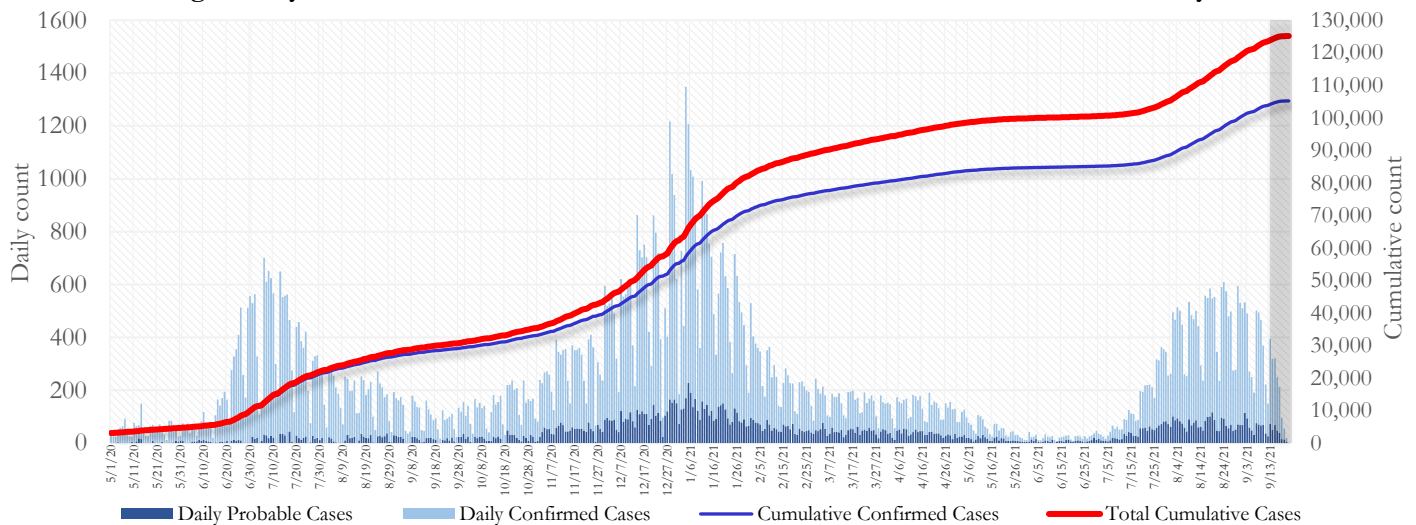


SUMMARY

- As of September 21, 2021, Fulton County has recorded **105,368 confirmed cases** and **19,961 probable cases** of COVID-19.
- Figure 1 shows both confirmed and probable case counts but the ensuing tables and figures use data from **confirmed cases only**.
- As of September 21, 2021, Fulton County has recorded **1,485 confirmed COVID-19 deaths**. 175 deaths are currently under review by GA DPH to confirm cause of death.
- By city, new confirmed COVID-19 case rates range from 259.5 per 100,000 persons (Johns Creek) to 949.4 per 100,000 persons (Union City). [**Fulton County Diagnoses Rates (per 100,000 persons): Cumulative –9586.0; Incidence – 431.4**]. See map showing incident case rate by ZIP code on Pg.7.
- Of all PCR testing done in Fulton County between August 30 and September 12, **the percent positivity rate was 10.4%**.

Fig 1. Daily and Cumulative Confirmed and Probable COVID-19 cases in Fulton County, GA



Counts shown reflect the number of cases as of 9:00 am on 9/21/21 using the date of first positive sample collection. Where date of sample collection was not available or missing, the date of report creation in GA SendSS was used instead. The Georgia Department of Health defines a confirmed cases as someone with a positive molecular test, also known as PCR. A probable case is defined as a positive antigen test, though probable cases are still considered positive cases and individuals who tested positive through an antigen test should follow all DPH isolation and quarantine guidance. **Note:** Delays in data reporting may cause changes in data counts, particularly in the shaded portion. Data throughout this report are preliminary and subject to ongoing data cleaning processes, and thus are subject to change.

THE FOLLOWING ANALYSES (PAGES 1-19) ARE USING DATA ON CONFIRMED CASES ONLY.

DISTRIBUTION OF COVID-19 CASES BY REGION

New cases: 42% of the new COVID-19 cases in the past 2 weeks occurred in Atlanta while 26% and 27% occurred in the Northern and Southern regions of the county respectively.

Fulton Region	% Cumulative count	% New cases*
Atlanta	42.9%	42.1%
North ¹	32.0%	26.4%
South ²	21.8%	27.0%
Unincorporated/Unknown	3.3%	4.5%

¹Includes all Fulton County cities north of Atlanta (Alpharetta, Johns Creek, Milton, Mountain Park, Roswell, Sandy Springs.) ²Includes all cities south of Atlanta (Chattahoochee Hills, College Park, East Point, Fairburn, Hapeville, Palmetto, South Fulton, and Union City) ***New cases:** Cases diagnosed in the past 2 weeks only (between 9/1/21 – 9/14/21).

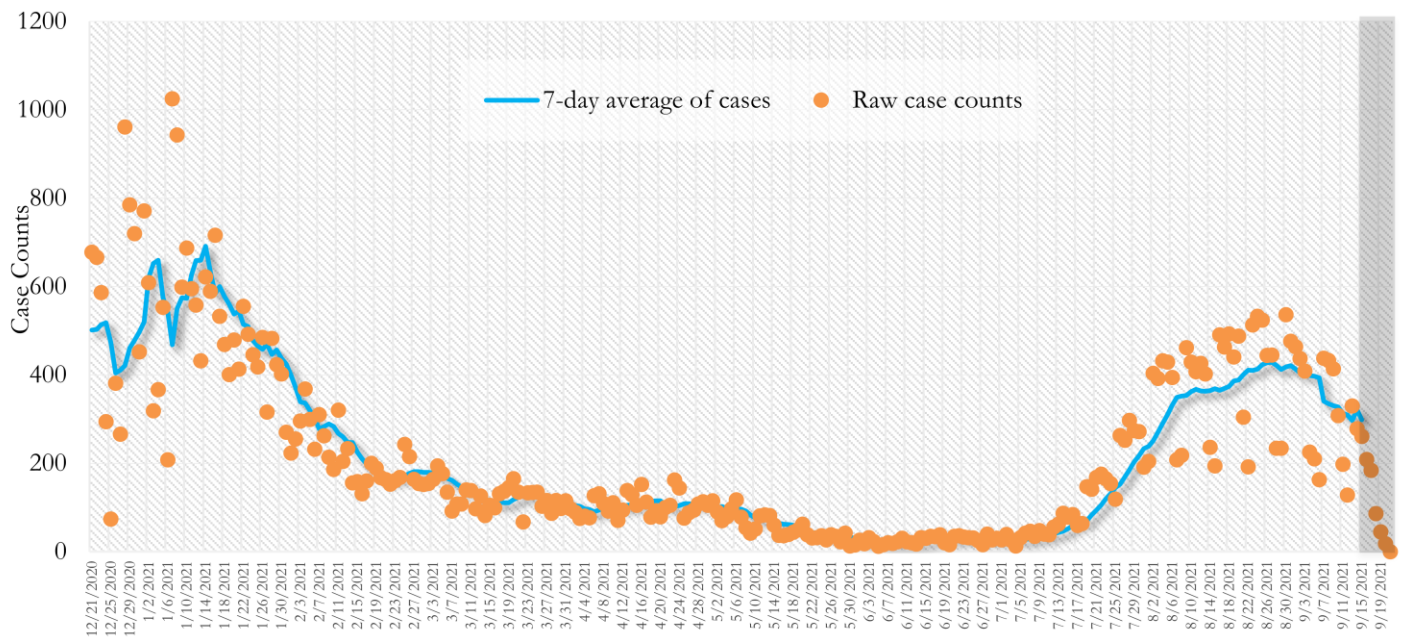
In the recent two week reporting period (9/1-9/14), there were fewer new cases of COVID-19 in Fulton County than the previous two weeks (8/18-8/31).



**Delayed a week to account for testing results turnaround time.*

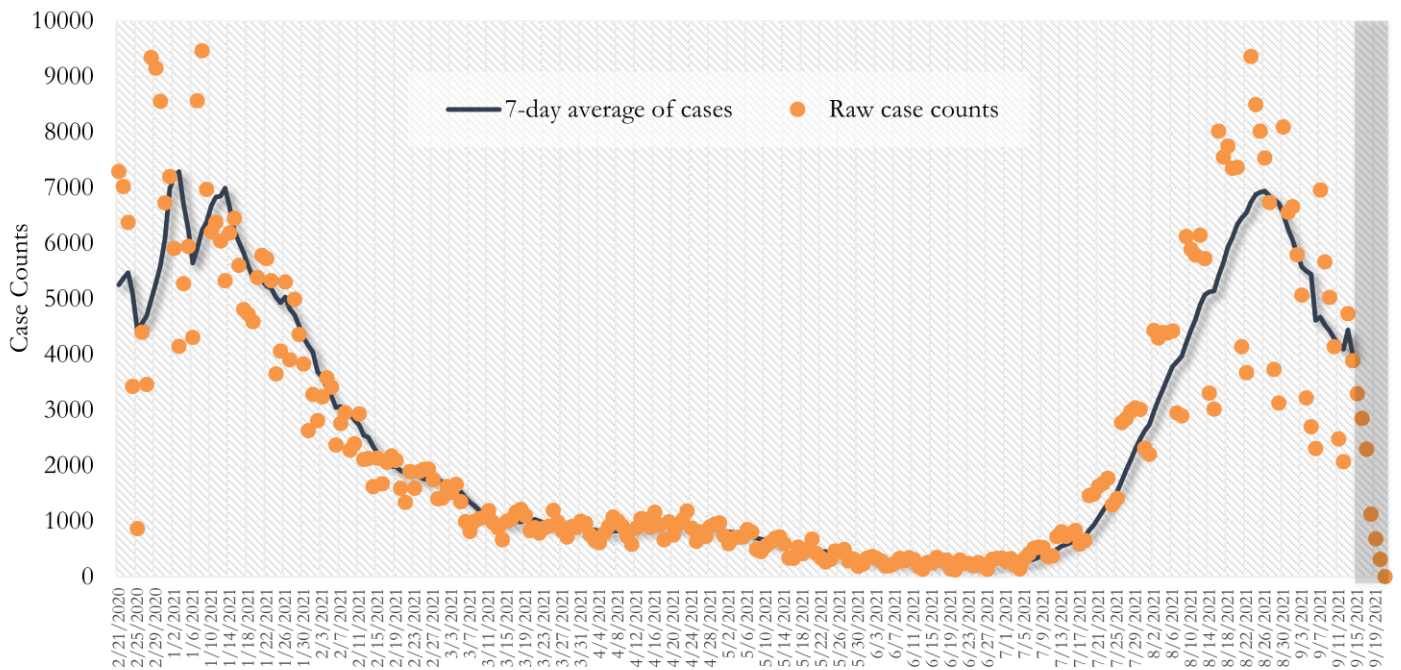
TRENDS IN COVID-19 CASES, HOSPITALIZATIONS AND DEATHS (7-DAY MOVING AVE.)

Fig. 2. New COVID-19 Cases in Fulton County Daily (Averaged over 7 days)



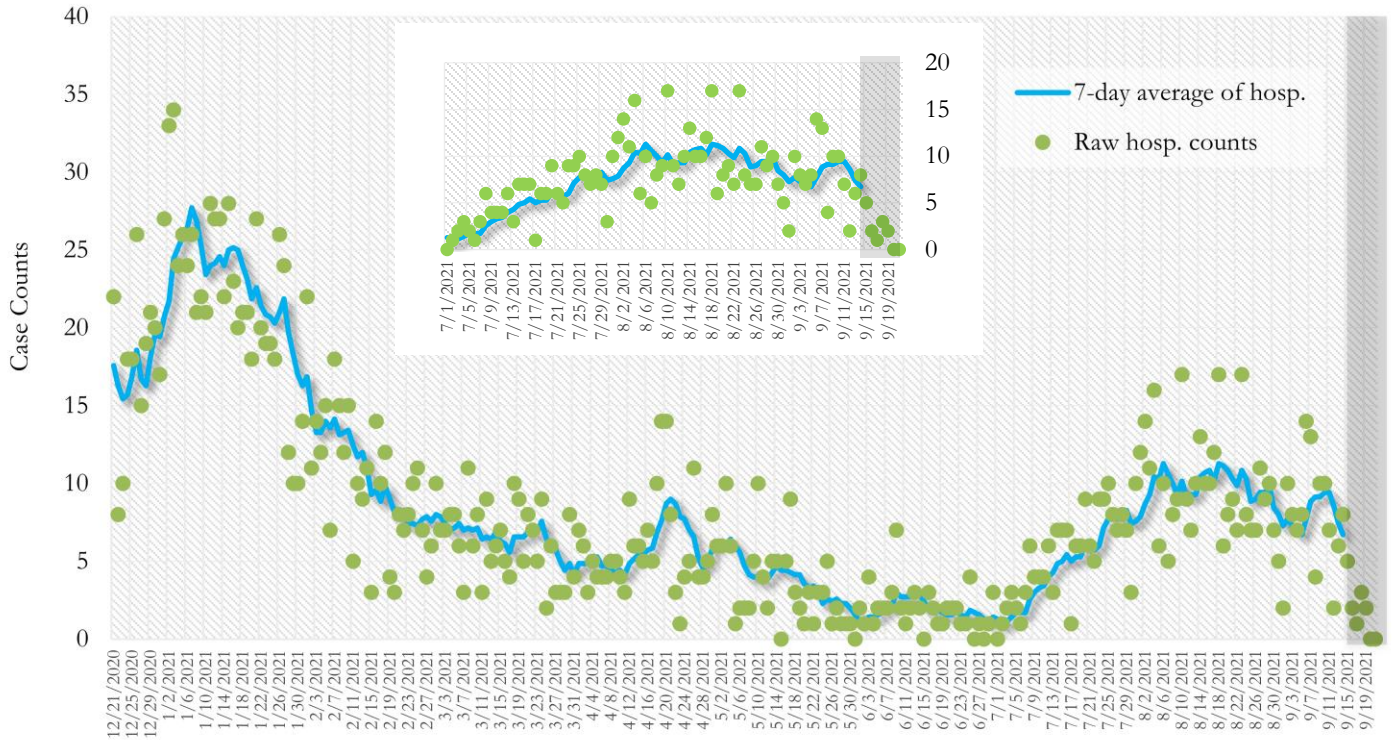
*Date of collection of first positive sample used (report creation date used where sample collection date is missing). Graph above reflects the trend in COVID-19 diagnosis. Due to the high volume of testing in recent weeks, there have been delays in reporting lab results. Thus, the trend is subject to change as more lab results get added to the state surveillance database.

Fig. 3. New COVID-19 Cases in Georgia State Daily (Averaged over 7 days)



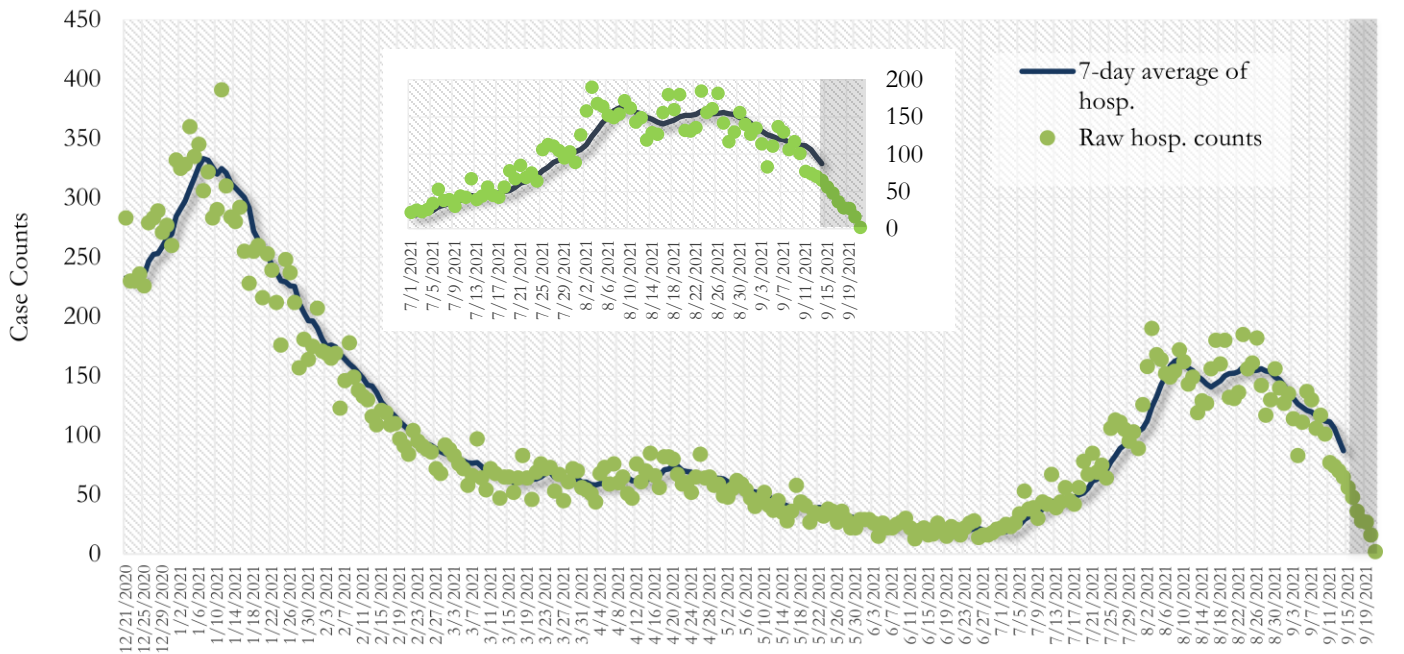
*Date of collection of first positive sample used (report creation date used where sample collection date is missing). Graph above reflects the trend in COVID-19 diagnosis. Due to the high volume of testing in recent weeks, there have been delays in reporting lab results. Thus, the trend is subject to change as more lab results get added to the state surveillance database.

Fig. 4. COVID-19 Hospitalizations in Fulton County Daily (Averaged over 7 days)



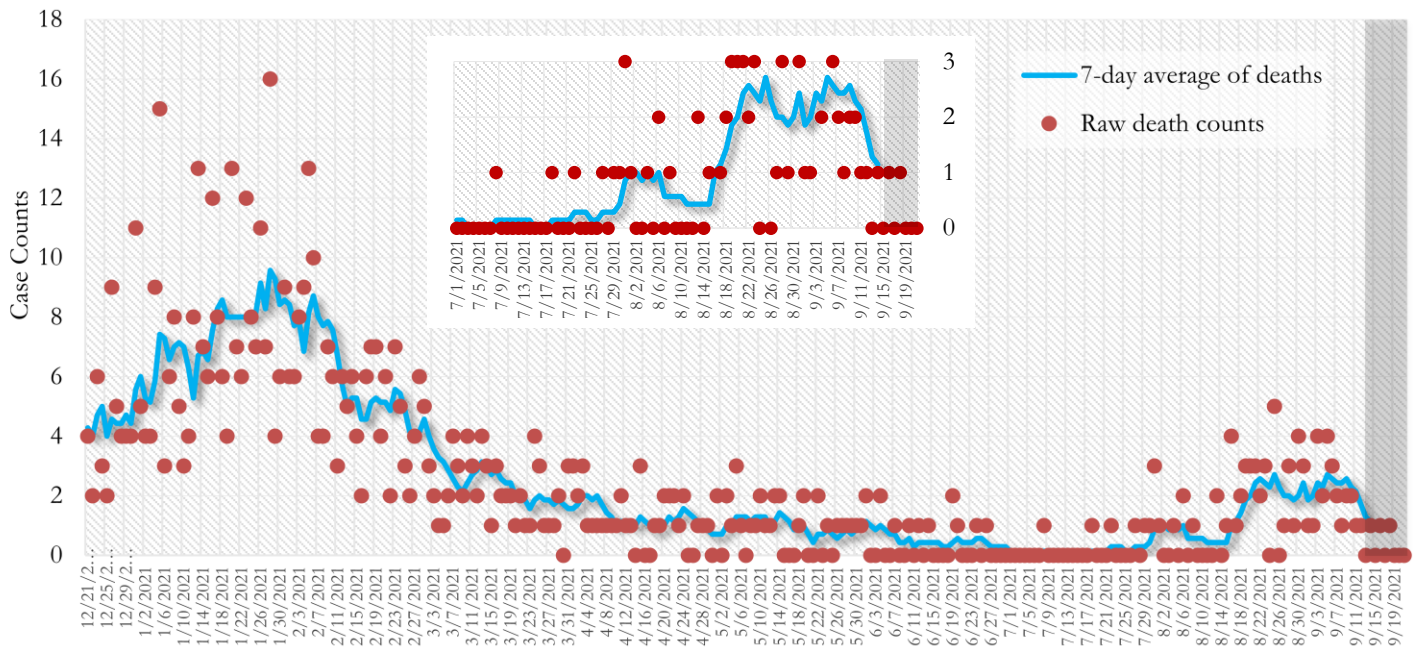
*Reported date of hospital admission used. Graph above reflects the trend in COVID-19 hospitalizations. Due to the high volume of new cases being added daily, there have been delays in reporting hospitalization data. Thus, the trend is likely to change as more hospitalization data is reported in the state surveillance database.

Fig. 5. COVID-19 Hospitalizations in Georgia State Daily (Averaged over 7 days)



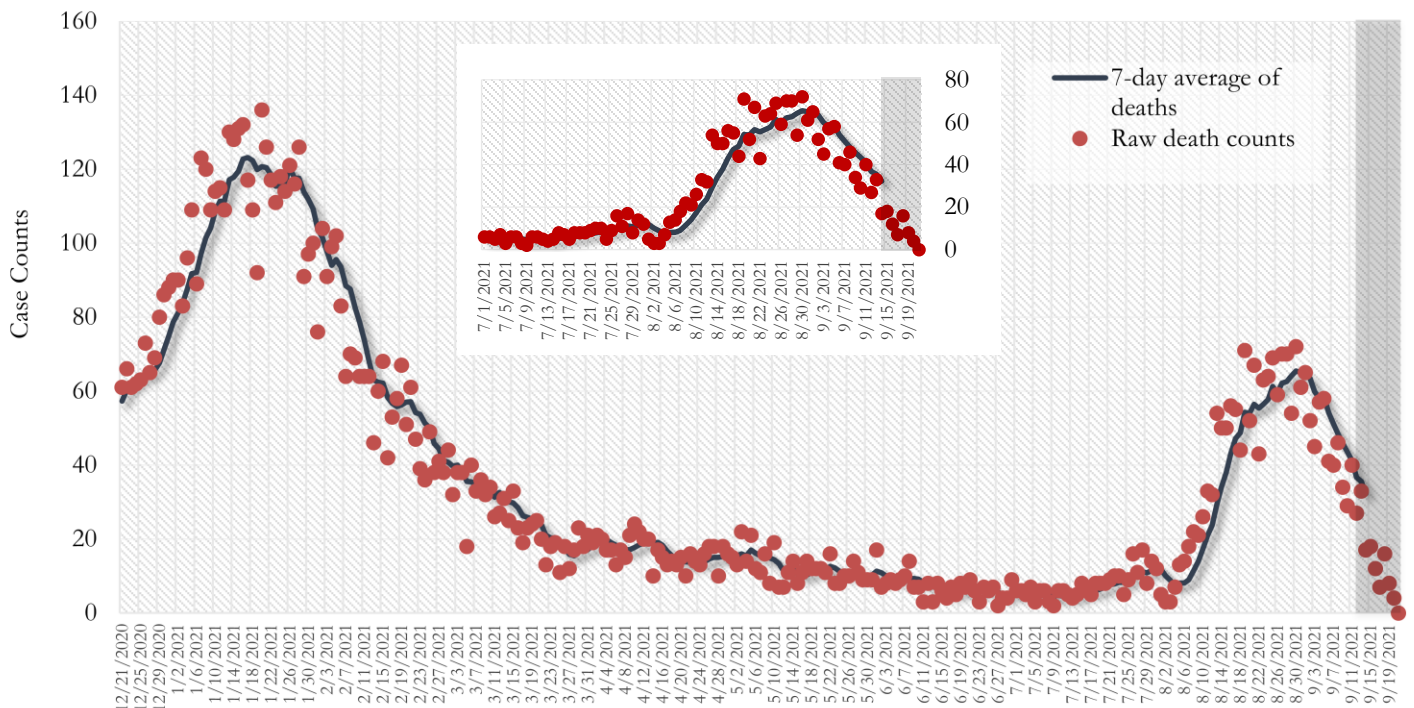
*Reported date of hospital admission used. Graph above reflects the trend in COVID-19 hospitalizations. Due to the high volume of new cases being added daily, there have been delays in reporting hospitalization data. Thus, the trend is likely to change as more hospitalization data is reported in the state surveillance database.

Fig. 6. COVID-19 Deaths in Fulton County Daily (Averaged over 7 days)



*Reported date of death used. Graph above reflects the trend in deaths attributed to COVID-19. The trend is likely to change as more data on deaths among persons with COVID-19 is reported in the state surveillance database.

Fig. 7. COVID-19 Deaths in Georgia State Daily (Averaged over 7 days)



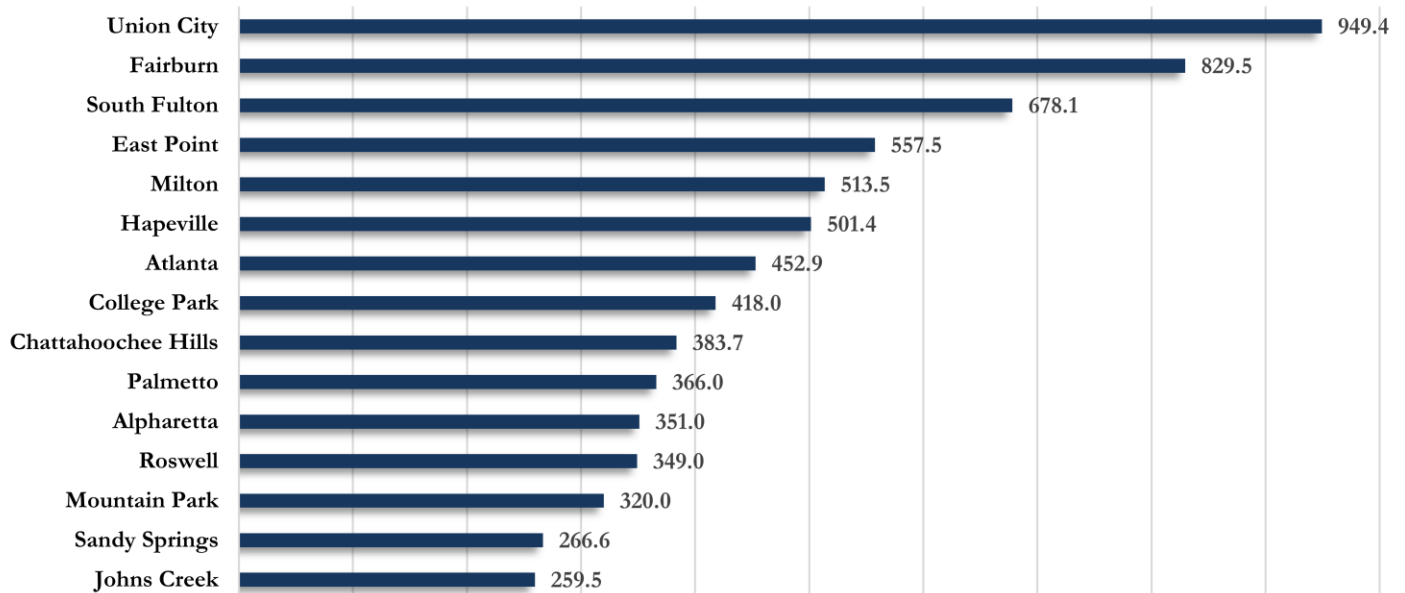
*Reported date of death used. Graph above reflects the trend in deaths attributed to COVID-19. The trend is likely to change as more data on deaths among persons with COVID-19 is reported in the state surveillance database.

COVID-19 CASE COUNTS AND RATES BY CITY

	Recent 14-day reporting period ¹	Preceding 14-day reporting period	% Change from preceding 14 days (%) ²	14-Day Incidence Rate ³
	9/1-9/14	8/18-8/31		
Alpharetta	227	255	↓ 11.0%	351.0
Atlanta	1998	2154	↓ 7.2%	452.9
Chattahoochee Hills	11	15	↓ 26.7%	383.7
College Park	58	92	↓ 37.0%	418.0
East Point	195	262	↓ 25.6%	557.5
Fairburn	122	126	↓ 3.2%	829.5
Hapeville	33	36	↓ 8.3%	501.4
Johns Creek	217	238	↓ 8.8%	259.5
Milton	196	180	↑ 8.9%	513.5
Mountain Park	<10	<10	-	320.0 ⁴
Palmetto	16	41	↓ 61.0%	366.0
Roswell	329	306	↑ 7.5%	349.0
Sandy Springs	281	327	↓ 14.1%	266.6
South Fulton	645	796	↓ 19.0%	678.1
Union City	199	265	↓ 24.9%	949.4
Unknown	213	127	-	-

¹**New cases:** Cases diagnosed in most recent 14 days (based on reported dates of positive sample collection). To allow for lag in reporting results of new diagnoses from samples collected in the most recent week, data used for incident diagnoses analyses were moved back by one week. ²**% change:** These reflect the percentage increase or decrease in new diagnoses between the 14 days preceding the most recent 7 days and the 14 days preceding that. ³**(Incidence) Rate:** Rate of new diagnoses in the last 14 day period preceding the immediate past week. ****Data cleaning** (either during case interviews or address geo-coding) may lead to reassignment of few cases from one territory to another based on their corrected addresses. These may appear as "decreases" when compared to the previous counts. These do not reflect errors in the data collection or analysis process but only reflect the minor day-to-day fluctuations in case counts that arise in an evolving public health database like COVID's. ⁴Incidence rate is skewed high due to small population. **Note:** All data reported are preliminary and subject to change.

Fig. 8. Incidence Rates by Fulton City for Recent 14-day Reporting Period



*Rates shown are per 100,000 persons | All data shown are preliminary and are subject to change as testing results get updated.

Fig. 9. Density Map – New COVID-19 Cases (September 1 – September 14, 2021) in Fulton County

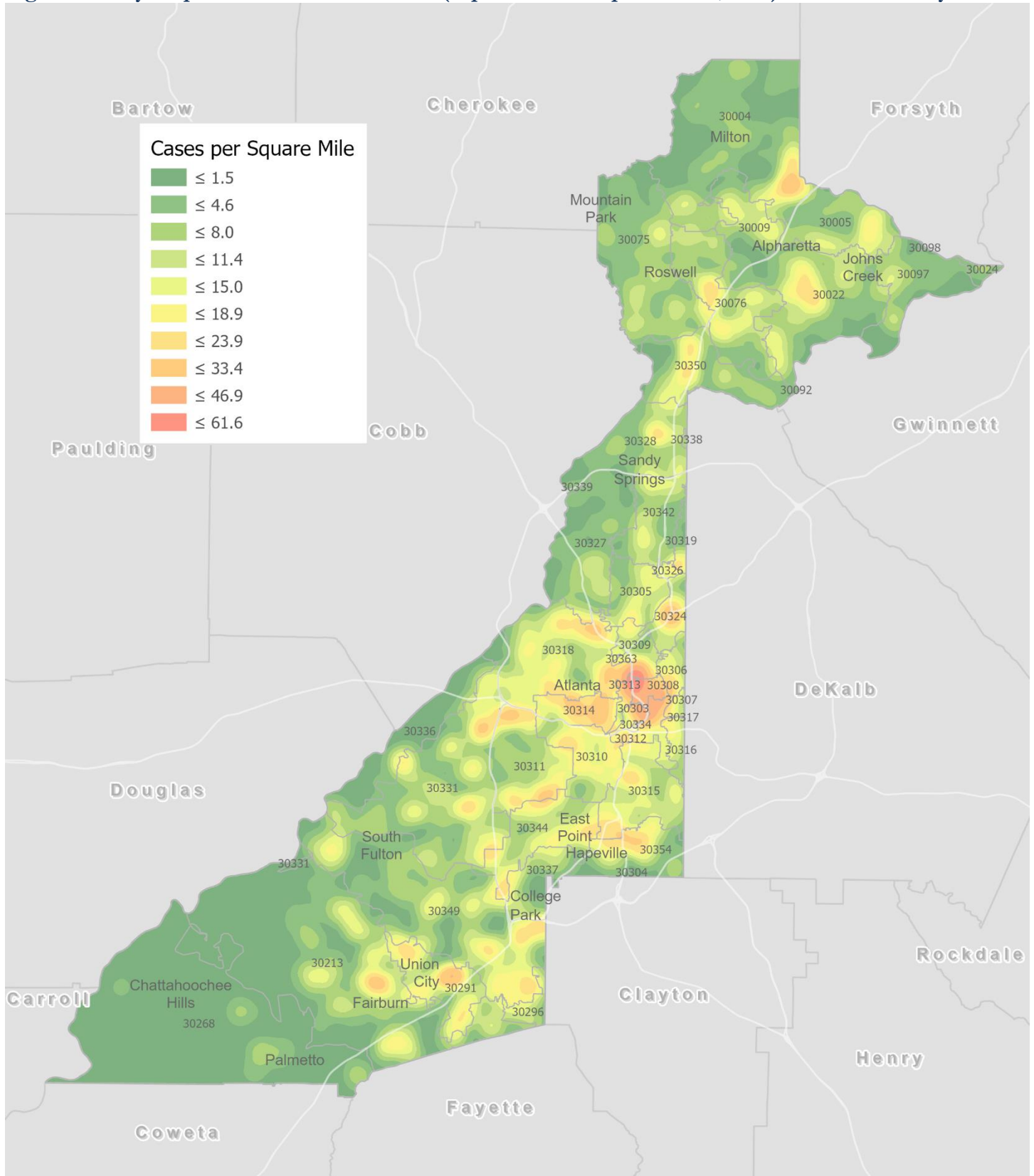
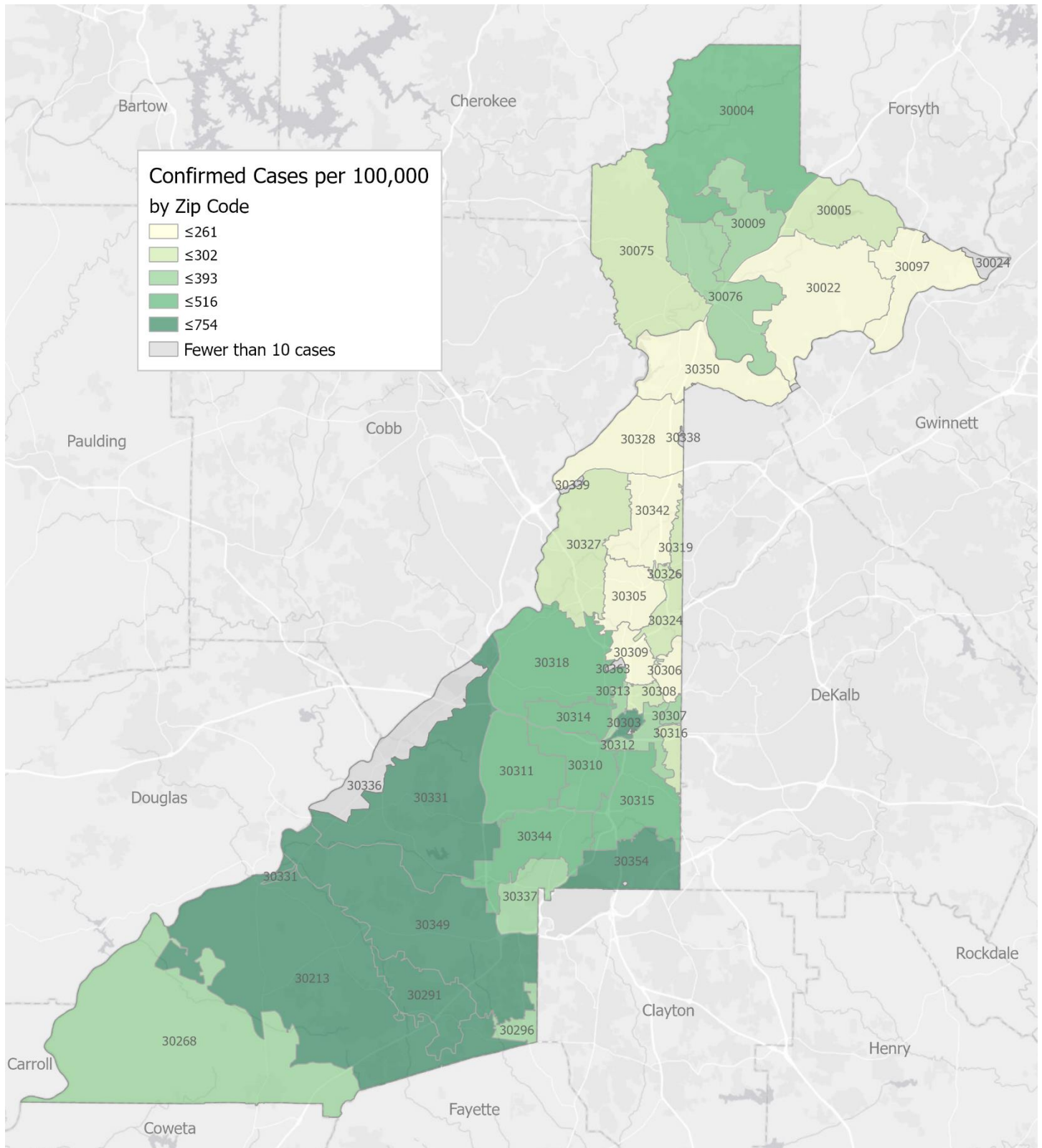


Fig. 10. New COVID-19 Diagnoses Rates (per 100,000 population) by Zip Code (September 1 – September 14, 2021)



*Rates shown are per 100,000 populations.

New COVID-19 cases: Cases diagnosed in most recent 14 days (based on reported dates of positive sample collection). To allow for lag in reporting results of positive cases from samples collected in the immediate past 7 days, data used for incident diagnoses analyses are moved back by one week. Data used excludes outbreak-related cases at long-term care facilities and map shown reflects only the new non-LTCF cases diagnosed between the dates shown in map title. See page 8 for zip code break down table.

COVID-19 NEW CASE¹ COUNTS BY ZIP CODE

Zip Code	Recent 14-day reporting period (9/1–9/14)	Previous 14-day reporting period (8/18–8/31)	% Change between reporting periods ²
All Fulton	4742	5223	↓ 9.2%
30004	244	247	↓ 1.2%
30005	117	133	↓ 12.0%
30009	67	75	↓ 10.7%
30022	208	213	↓ 2.3%
30023	<10	<10	-
30024	<10	<10	-
30075	154	166	↓ 7.2%
30076	161	127	↑ 26.8%
30080	0	0	-
30097	54	52	↑ 3.8%
30098	0	0	-
30135	0	0	-
30138	0	0	-
30139	0	0	-
30213	298	338	↓ 11.8%
30268	37	59	↓ 37.3%
30291	180	256	↓ 29.7%
30296	25	42	↓ 40.5%
30301	<10	<10	-
30303	47	16	↑ 193.8%
30305	74	107	↓ 30.8%
30306	43	33	↑ 30.3%
30307	26	17	↑ 52.9%
30308	63	80	↓ 21.3%
30309	75	104	↓ 27.9%
30310	135	152	↓ 11.2%
30311	212	240	↓ 11.7%
30312	90	112	↓ 19.6%
30313	45	32	↑ 40.6%
30314	128	134	↓ 4.5%
30315	198	210	↓ 5.7%
30316	43	37	↑ 16.2%
30318	329	344	↓ 4.4%
30319	28	12	↑ 133.3%
30321	0	0	-
30324	79	70	↑ 12.9%
30326	16	24	↓ 33.3%
30327	74	96	↓ 22.9%
30328	103	114	↓ 9.6%
30331	371	368	↑ 0.8%
30334	<10	<10	-
30336	<10	19	↓ 63.2%
30337	48	68	↓ 29.4%

Zip Code	Recent 14-day reporting period (9/1–9/14)	Previous 14-day reporting period (8/18–8/31)	% Change between reporting periods
30338	11	<10	↑ 266.7%
30339	30	25	↑ 20.0%
30340	0	0	-
30341	0	0	-
30342	83	100	↓ 17.0%
30344	185	238	↓ 22.3%
30345	0	0	-
30349	384	481	↓ 20.2%
30350	108	114	↓ 5.3%
30354	105	112	↓ 6.3%
30358	0	0	-
30363	<10	<10	-
30374	0	<10	↓ 100.0%
30606	0	0	-
31131	<10	0	-
31150	0	0	-
Unknown	37	31	-

¹**New cases:** Cases diagnosed in most recent 28 days (based on reported dates of positive sample collection). To allow for lag in reporting results of new diagnoses from samples collected in the most recent week, data used for incident diagnoses analyses were moved back by one week. ²**Percent change:** These reflect the percentage increase or decrease of new diagnoses between the 14 days preceding the past 7 days and the 14 days preceding that. Changes in ZIP codes with less than 10 cases in both 2 week intervals are not reported.

COVID-19 HOSPITALIZATIONS, ICU ADMISSIONS AND DEATHS IN FULTON

Fig. 11. Fulton County Covid-19 Cases Hospitalized and Admitted to ICU by Month

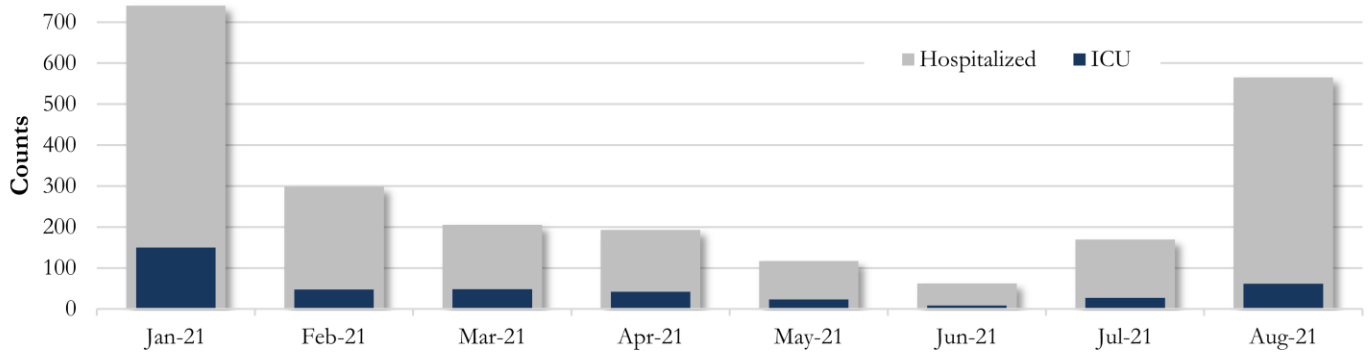
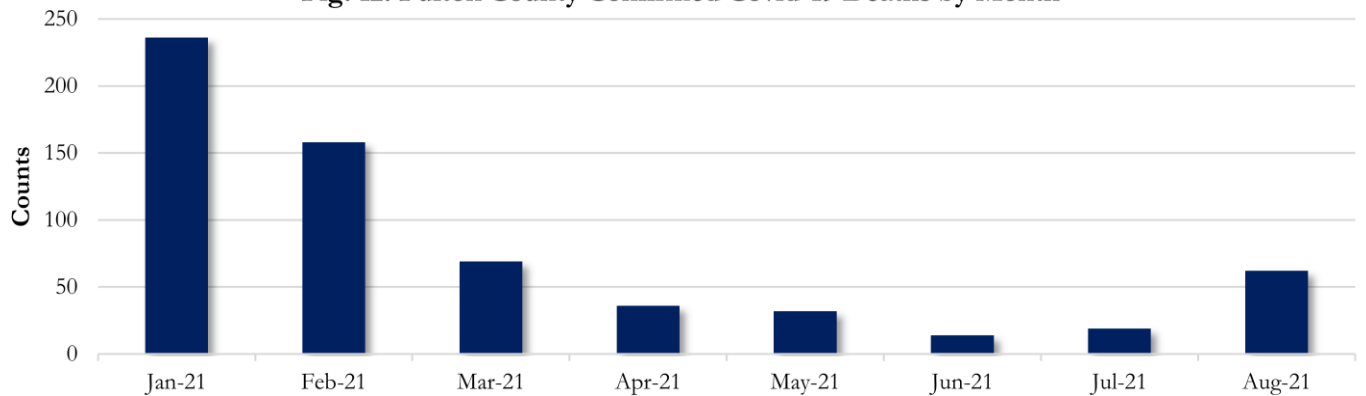
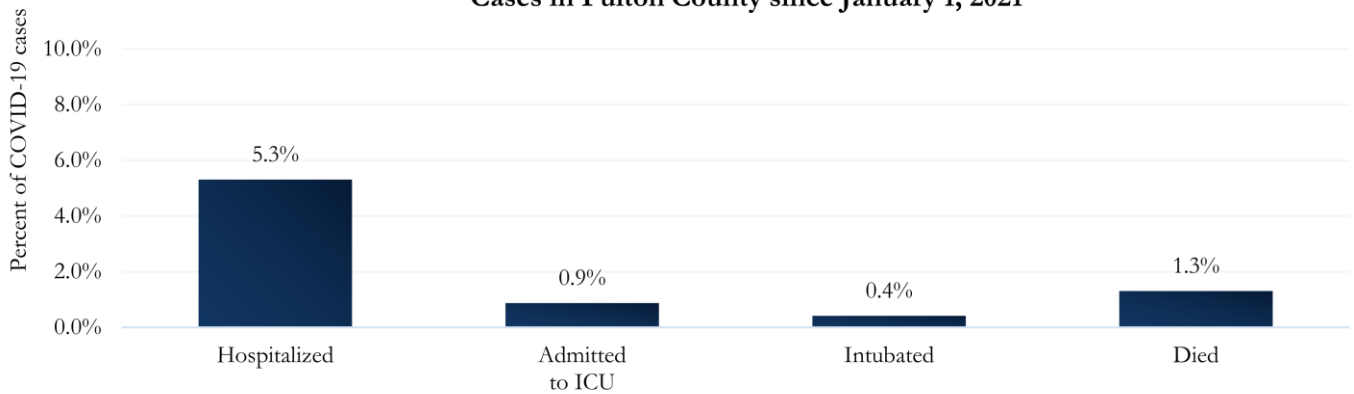


Fig. 12. Fulton County Confirmed Covid-19 Deaths by Month



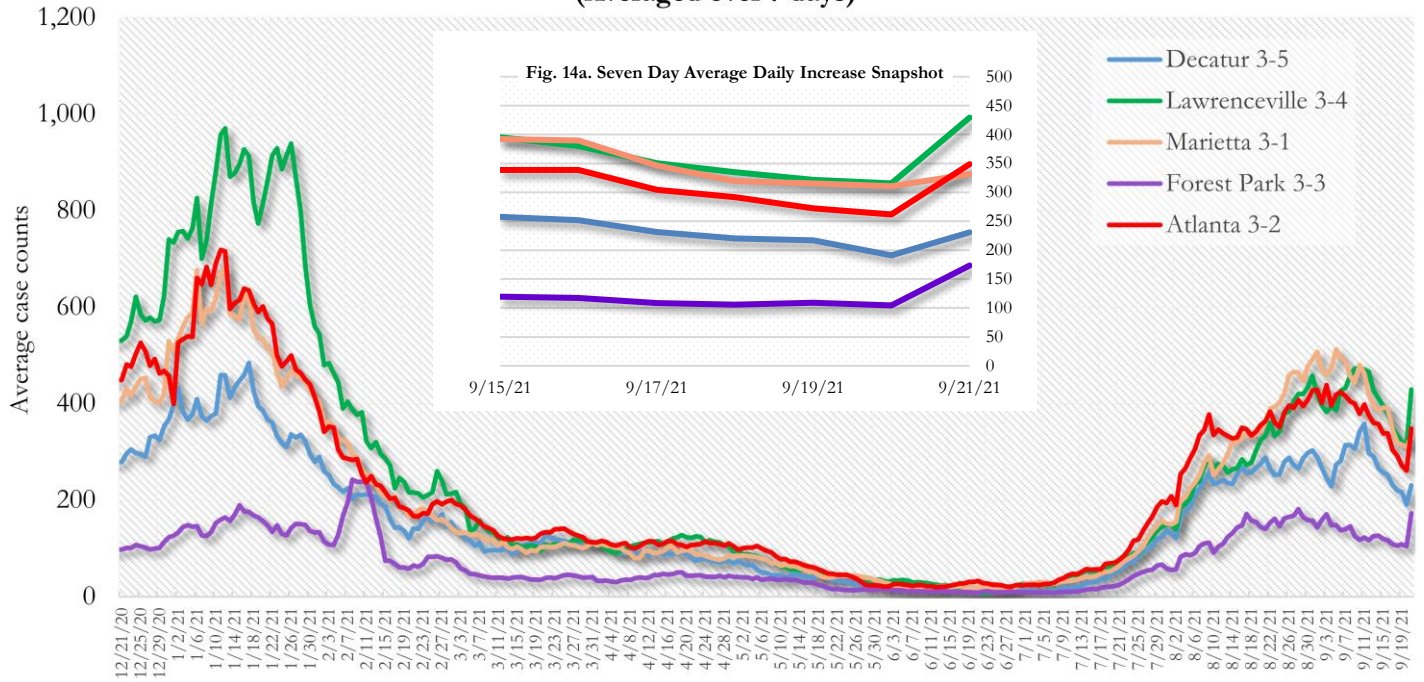
Values for July and August 2021 in figures 13 and 14 are subject to change as more hospitalizations, ICU admissions, and deaths get reported to state and local entities.

Fig. 13. Hospitalizations, ICU Admissions, Intubations, and Deaths among all Covid-19 Cases in Fulton County since January 1, 2021



COVID-19 CASE TRENDS IN FULTON AND SURROUNDING DISTRICTS

**Fig. 14. Daily Case Counts for Atlanta Metro Districts
(Averaged over 7 days)**



DEMOGRAPHIC DISTRIBUTIONS – COVID-19 CASES AND DEATHS

Table A - Cumulative and recent confirmed Covid-19 case and death counts by gender, age, and race/ethnicity in Fulton County, Georgia. Past 28 day period refers to August 18 – September 14, 2021

	Total Confirmed Cases	% of Total Cases	Confirmed Cases past 28 days	% of Confirmed Cases past 28 days	Total Confirmed Deaths	% of Total Deaths	Confirmed Deaths past 28 days	% of Confirmed Deaths past 28 days
TOTAL	105368		9965		1485		60	
Female	56003	53.1%	5425	54.4%	712	47.9%	28	46.7%
Male	48894	46.4%	4447	44.6%	773	52.1%	32	53.3%
Unknown*	471	<1%	93	<1%	0	-	0	-
0-9	5377	5.1%	1212	12.2%	0	-	0	-
10-19	12482	11.8%	2084	20.9%	<10	<1%	0	-
20-29	22947	21.8%	1567	15.7%	<10	<1%	0	-
30-39	20108	19.1%	1693	17.0%	33	2.2%	<10	5.0%
40-49	15800	15.0%	1359	13.6%	53	3.6%	<10	13.3%
50-59	13577	12.9%	970	9.7%	145	9.8%	10	16.7%
60-69	7961	7.6%	618	6.2%	273	18.4%	10	16.7%
>70	7045	6.7%	451	4.5%	975	65.7%	29	48.3%
Unknown*	71	<1%	11	<1%	0	-	0	-
Asian, NH	3951	3.7%	357	3.6%	24	1.6%	0	-
Black, NH	46696	44.3%	4963	49.8%	929	62.6%	41	68.3%
White, NH	33111	31.4%	1949	19.6%	465	31.3%	17	28.3%
Hispanic, all races	10482	9.9%	651	6.5%	60	4.0%	<10	1.7%
Other, NH	3412	3.2%	267	2.7%	<10	<1%	<10	1.7%
Unknown*	7716	7.3%	1778	17.8%	0	-	0	-

*Unknown includes cases not yet interviewed. 28 days delayed by seven to account for lag in reporting lab results. Deaths refer to all persons who had a positive PCR test result for Covid-19 and there is evidence that Covid-19 was the cause of death or a significant contributor to their death.

The following data are updated every two weeks.

Last updated 9/14/2021

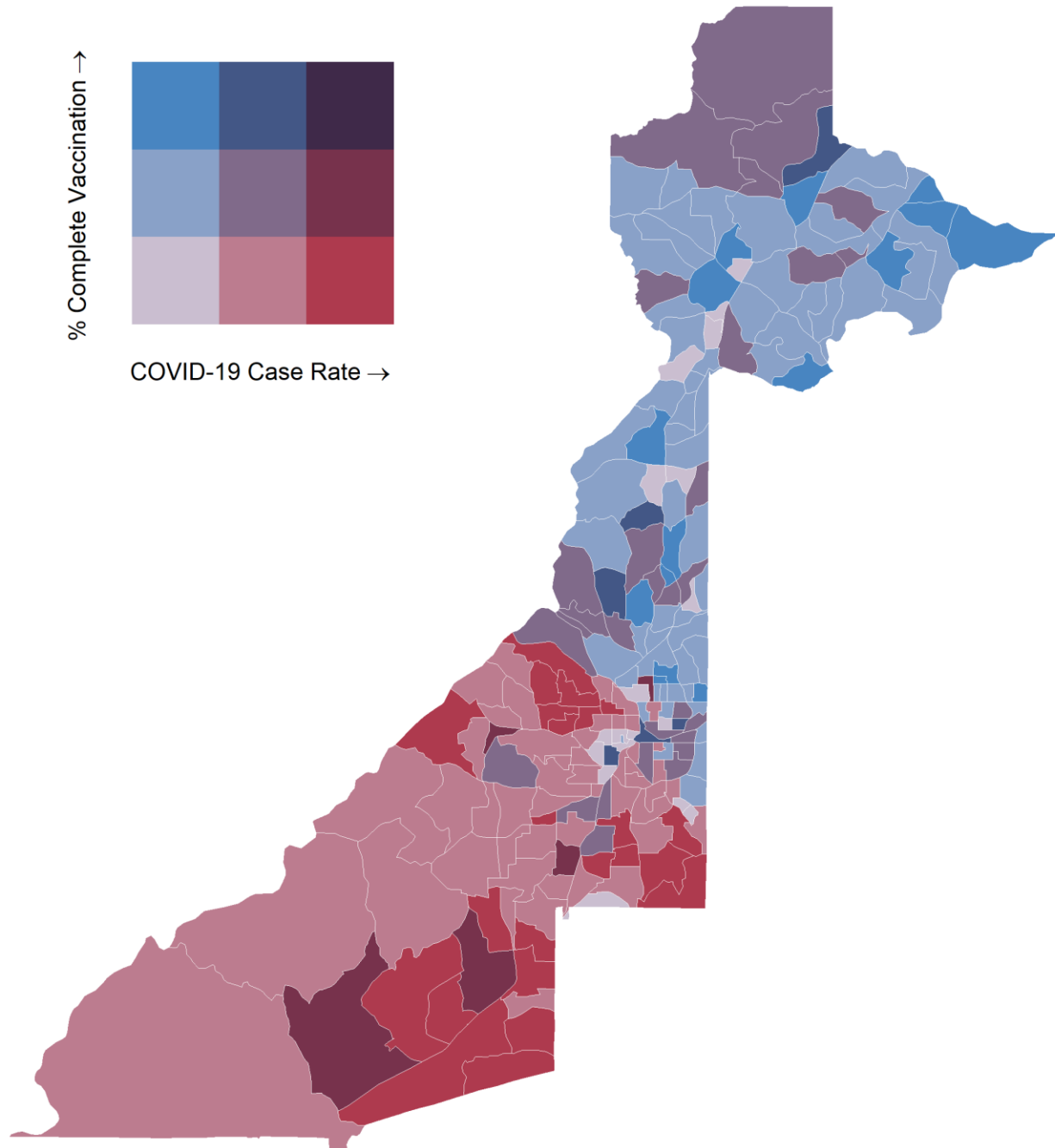
Data are from confirmed cases and PCR testing only.

These data are generated using a fixed start date and counted forward in 14-day intervals. Using these time blocks allows for the stability in trends over time and accounts for delays in reporting lab results.

In the interest of keeping the reports concise and useful, the cumulative counts updated on a monthly basis can now be viewed between updates at the Fulton County Board of Health website [here](#).

Please visit the Georgia Department of Public Health Daily Status Report [here](#) for cumulative daily counts.

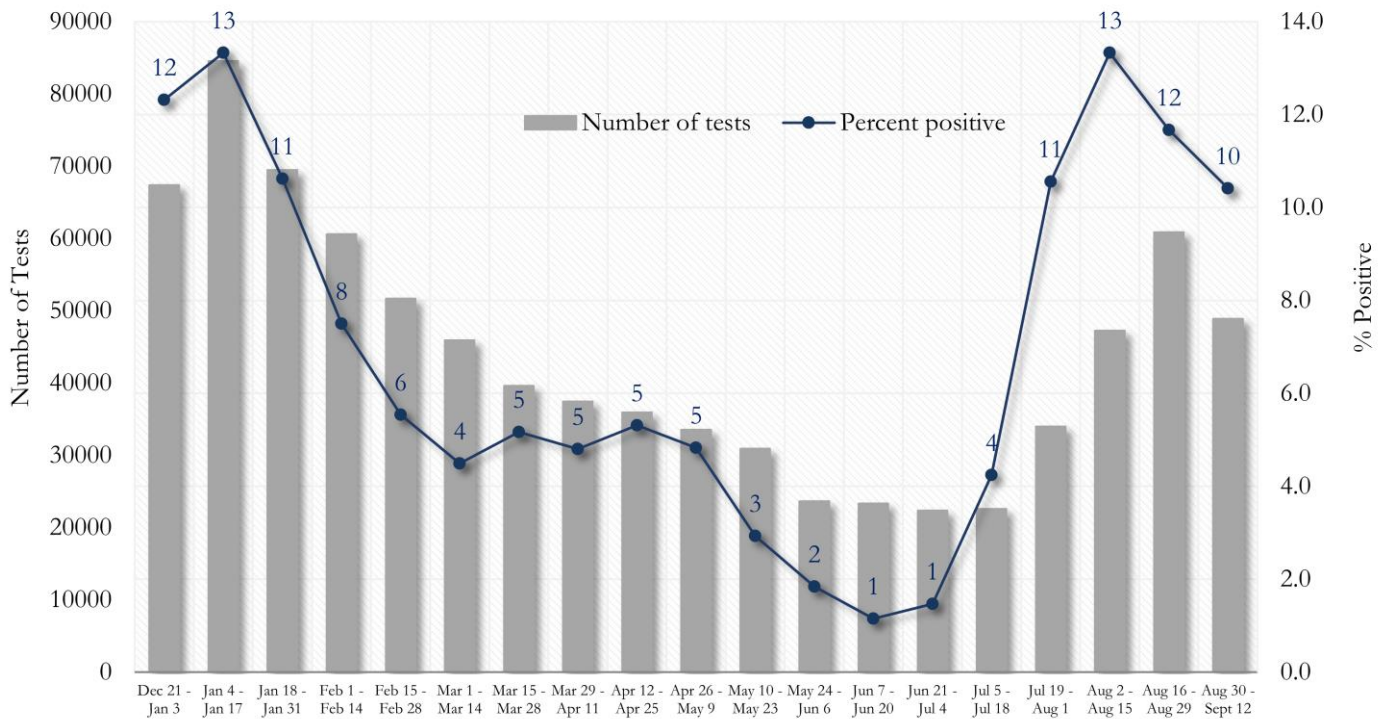
Fig. 15. Percent Complete Vaccination and COVID-19 Case Rate (per 100,000 population) by Census Tract August 16 – September 12, 2021



How to interpret these colors: The darker the blue, the better. The upper most blue box indicates low COVID-19 case rates and high vaccination coverage. Red is not ideal as red indicates high COVID-19 case rates and low vaccination coverage. Colors in between indicate varying combinations of COVID-19 case rates and vaccination coverage. COVID-19 case rate reflects new COVID-19 cases diagnosed between August 16th and September 12th, 2021 across Fulton County. Vaccination data from: <https://experience.arcgis.com/experience/3d8eea39f5c1443db1743a4cb8948a9c>

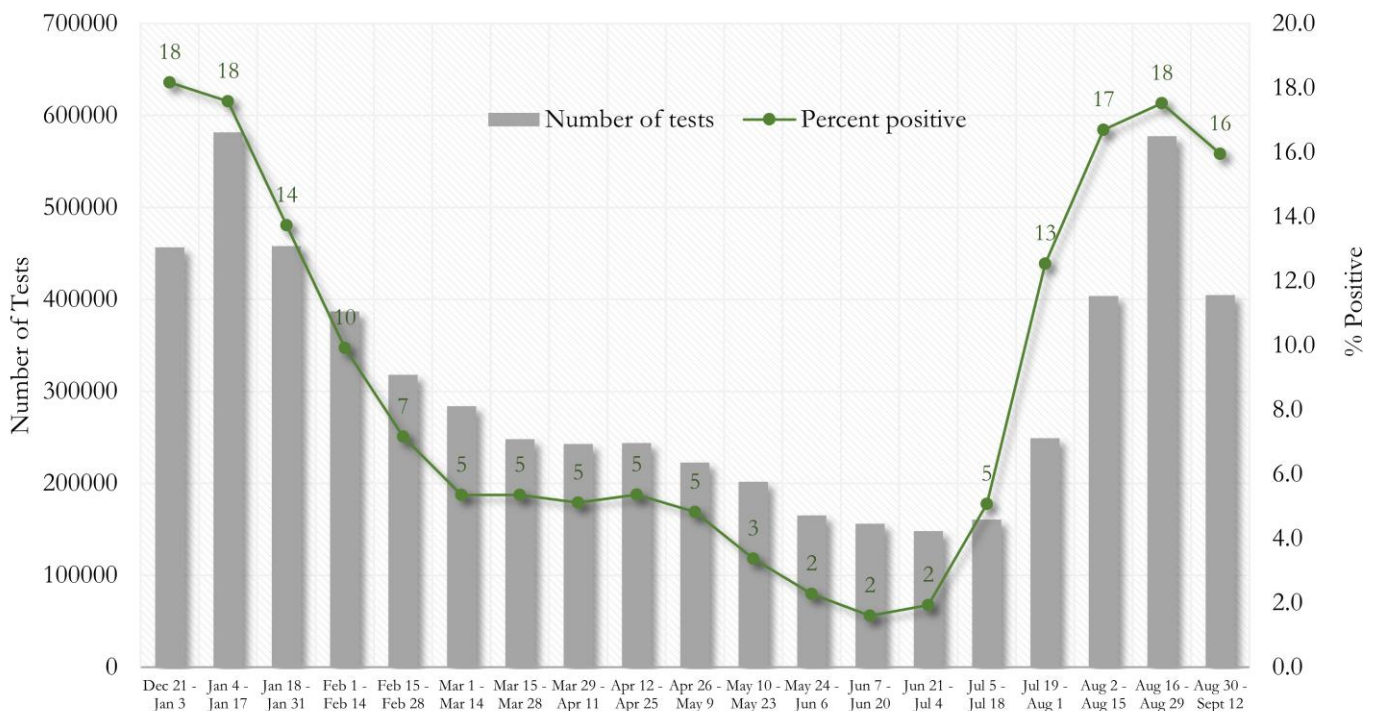
COVID-19 TESTING AND POSITIVITY IN FULTON COUNTY AND GEORGIA

Fig. 16. Trends in Positive Covid-19 Tests in Fulton County by 14-day Periods



*Data on Polymerase Chain Reaction (PCR) tests only included.

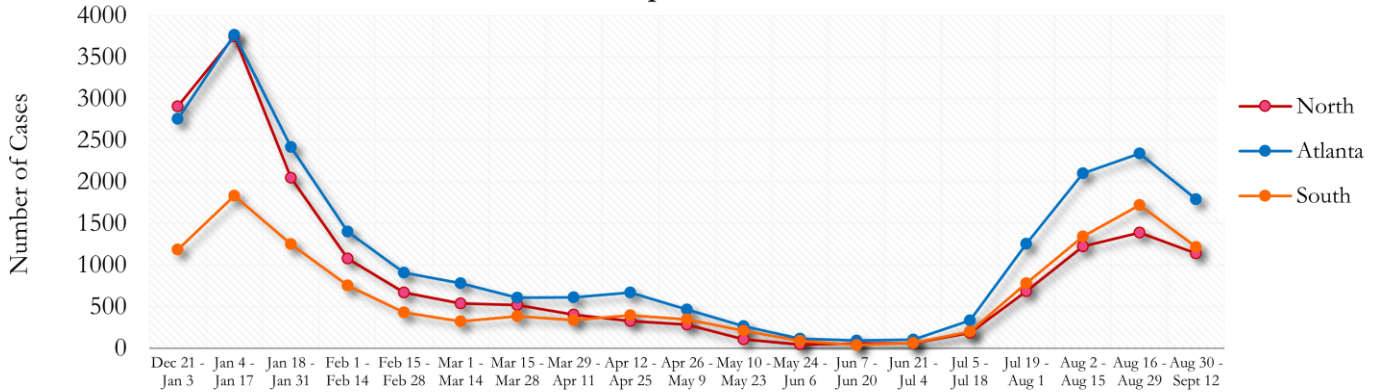
Fig. 17. Trends in Positive Covid-19 Tests in Georgia by 14-day Periods



*Data on Polymerase Chain Reaction (PCR) tests only included.

TRENDS IN COVID-19 CASES AMONG DEMOGRAPHIC GROUPS (14 DAY PERIODS)

Fig. 18. Trends in Geographic distribution of Covid-19 Cases in Fulton County by 14-day periods



In the past two weeks, Atlanta accounted for the majority of new cases.

*North - Includes all Fulton cities north of Atlanta (Alpharetta, Johns Creek, Milton, Mountain Park, Roswell, Sandy Springs)

*South - Includes all Fulton cities south of Atlanta (Chattahoochee Hills, College Park, East Point, Fairburn, Hapeville, Palmetto, South Fulton, and Union City)

Fig. 19. Trends in Racial Distribution of Covid-19 Cases in Fulton County by 14-day periods

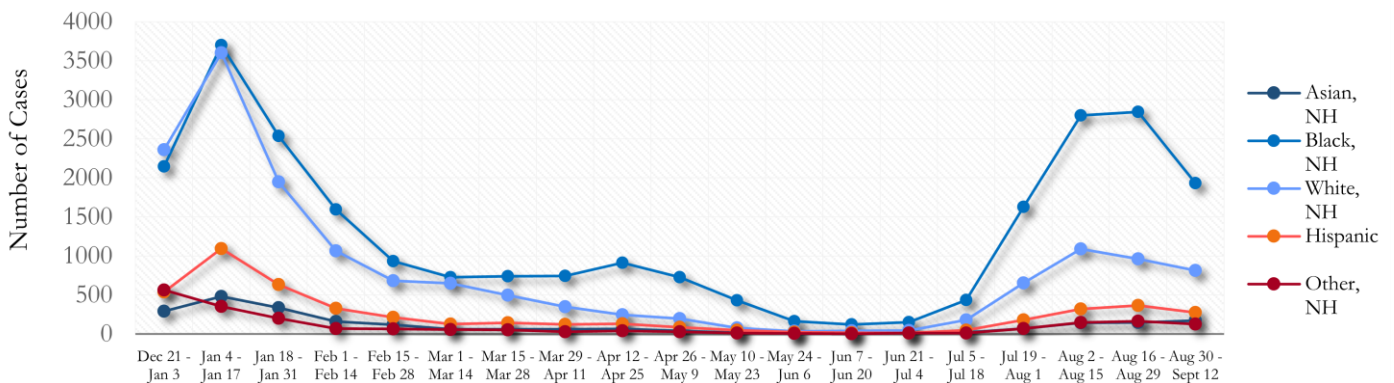
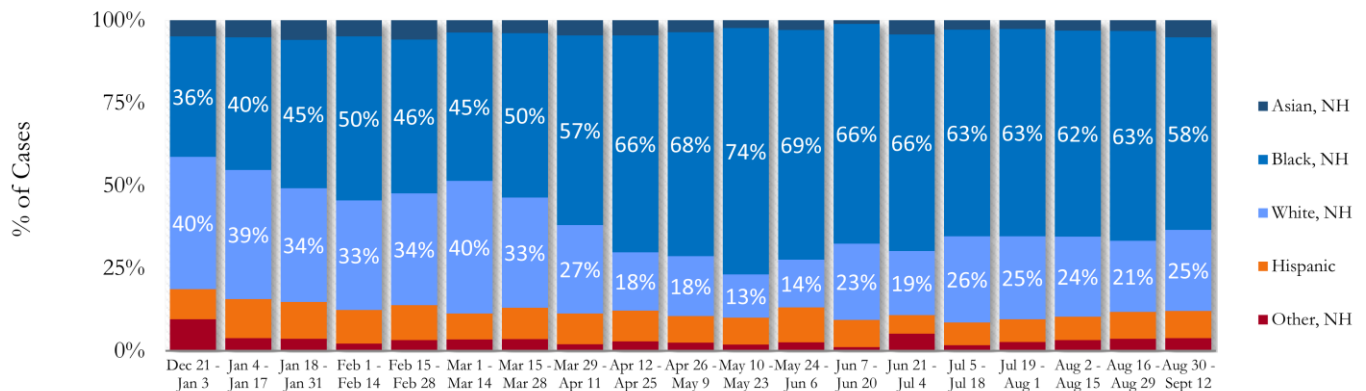


Fig. 20. Racial Distribution of Covid-19 Cases in Fulton County by 14-day periods



About 8% of all Fulton County COVID cases are missing data on patient race and ethnicity and in the past two weeks, about 24% of cases are missing this data. Percentages do not include the missing data and thus are subject to change as data are cleaned.

Fig. 21. Trends in Gender Distribution of Covid-19 Cases in Fulton County by 14-day periods

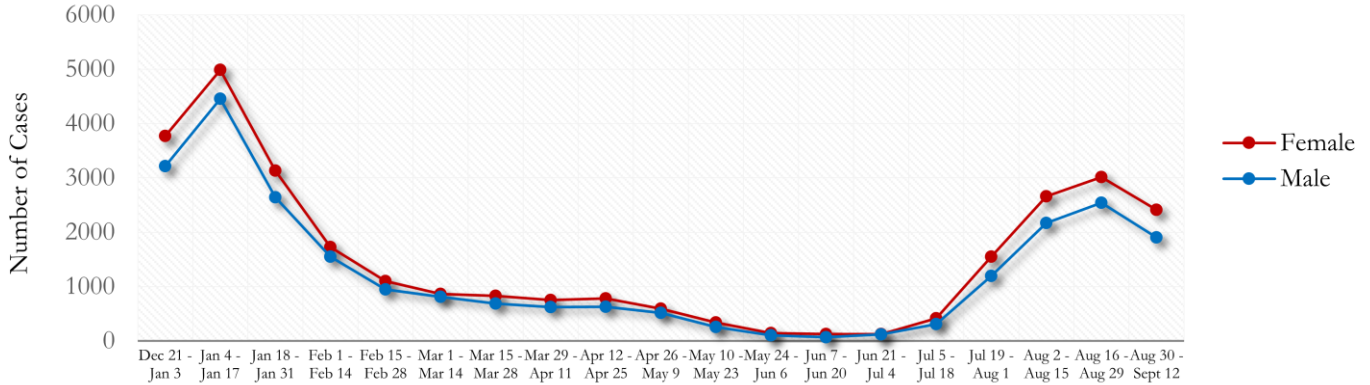
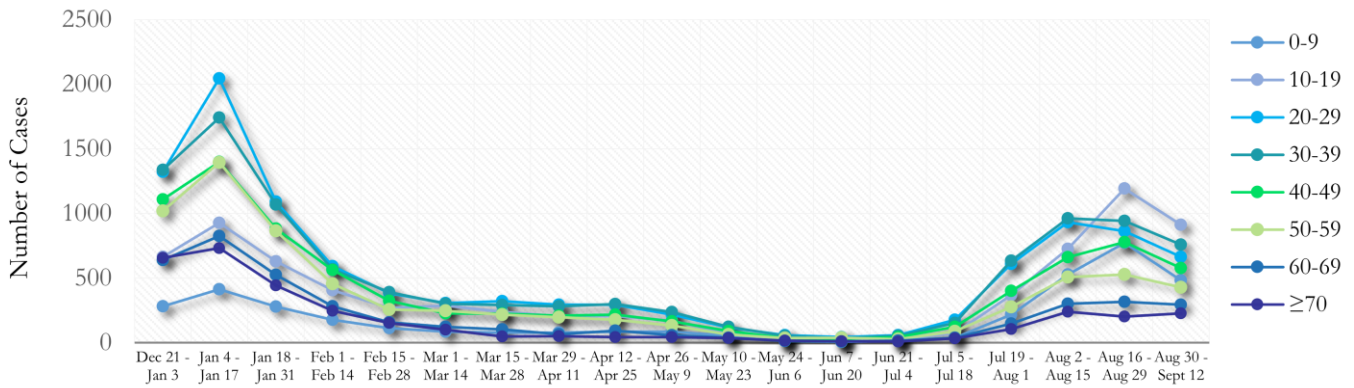
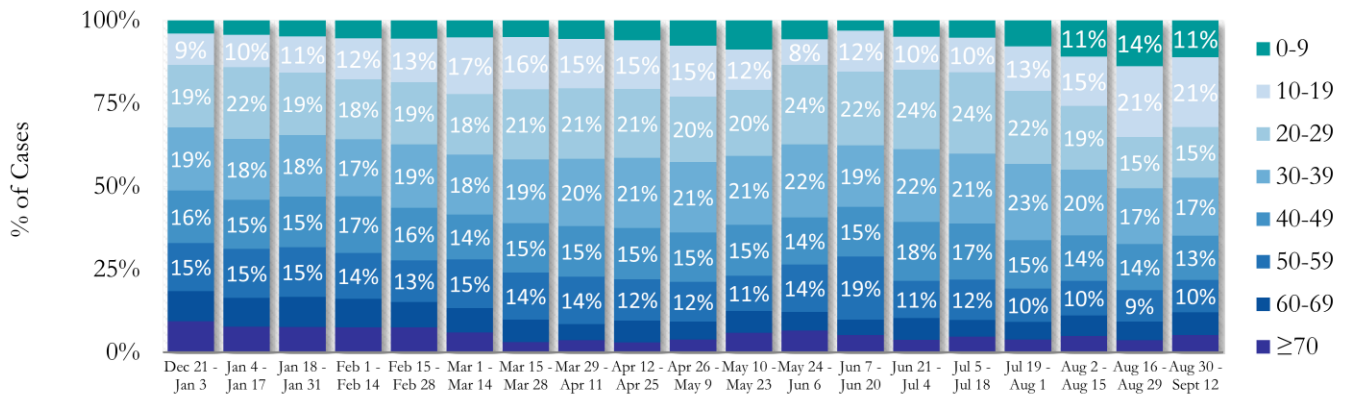


Fig. 22. Trends in Age Distribution of Covid-19 Cases in Fulton County by 14-day periods



In the most recent two weeks, 10-19 year olds and 30-39 year olds accounted for the majority of new cases.

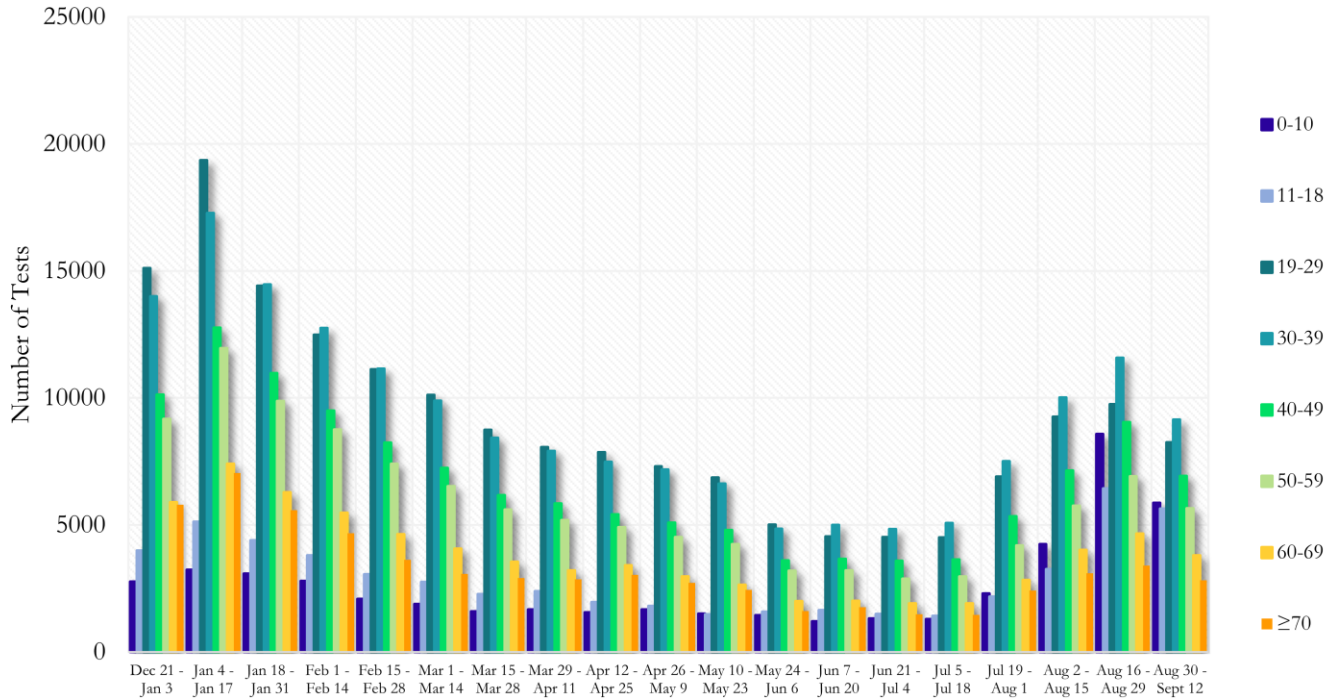
Fig. 23. Age Distribution of Covid-19 Cases in Fulton County by 14-day periods



Value labels under 10% are not shown. Percentages do not include the missing data and thus are subject to change as data are cleaned.

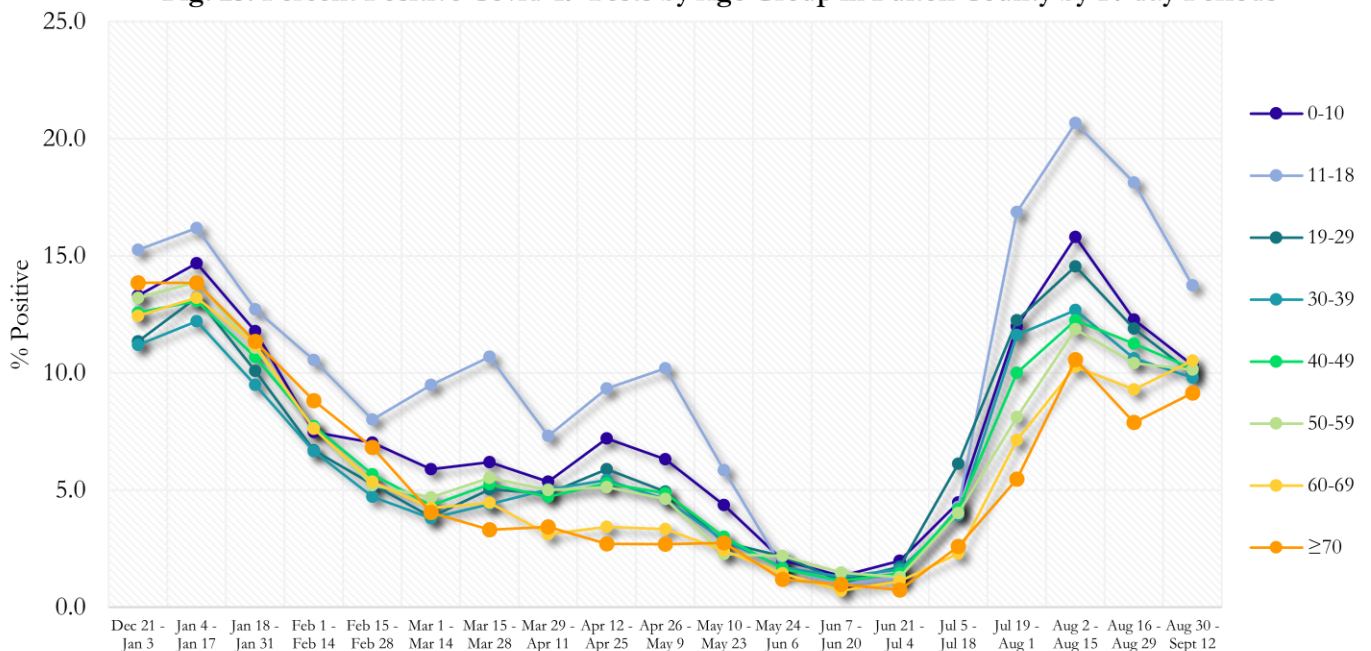
COVID-19 TESTING AND POSITIVITY IN FULTON COUNTY BY AGE AND RACE

Fig. 24. Covid-19 Tests by Age in Fulton County by 14-day Periods



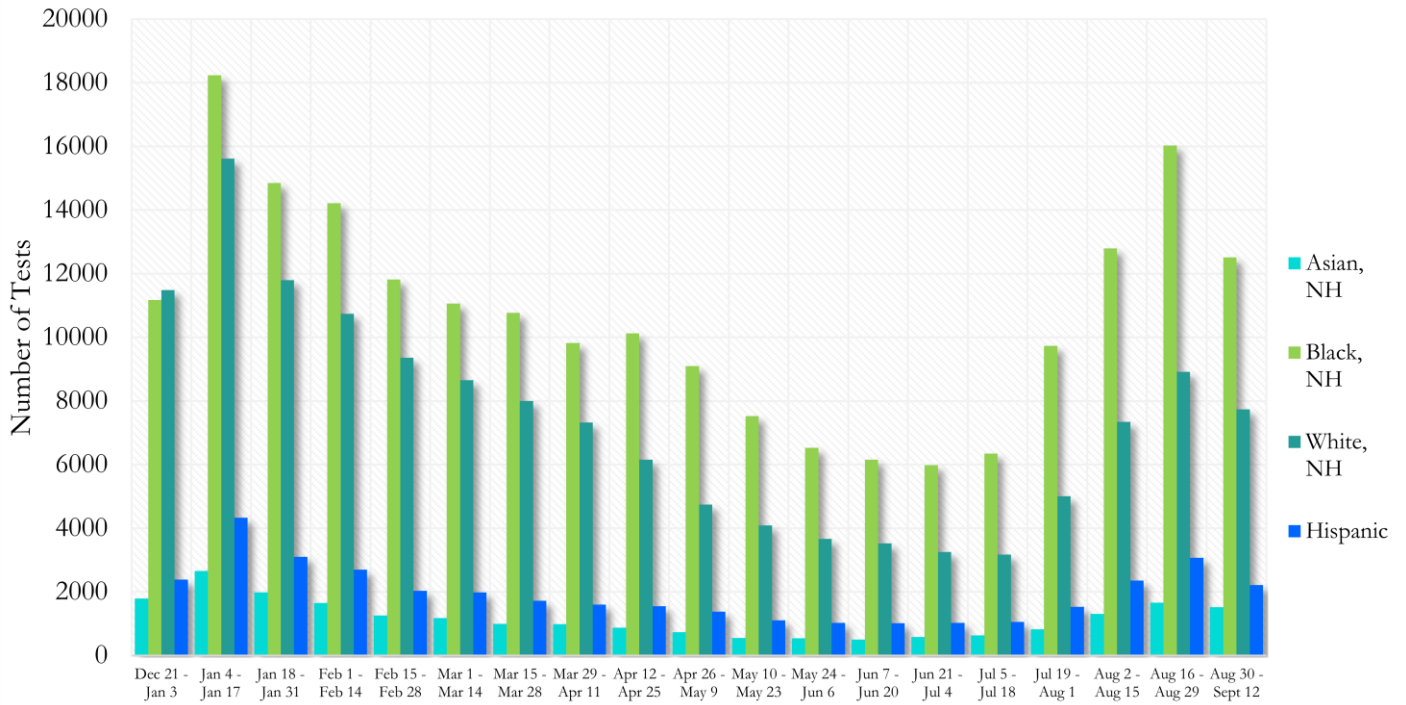
*Data on Polymerase Chain Reaction (PCR) tests only included.

Fig. 25. Percent Positive Covid-19 Tests by Age Group in Fulton County by 14-day Periods



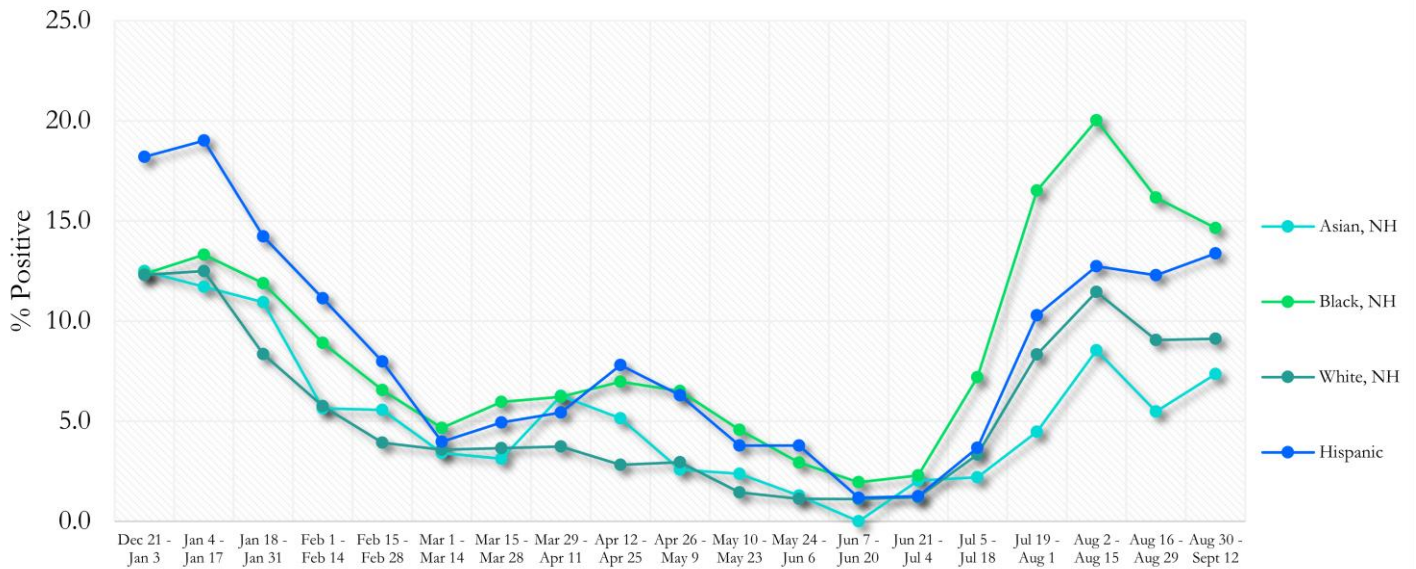
*Data on Polymerase Chain Reaction (PCR) tests only included.

Fig. 26. Covid-19 Tests by Race and Ethnicity in Fulton County by 14-day Periods



*Data on Polymerase Chain Reaction (PCR) tests only included. For the recent two weeks, 51% of test results did not have race/ethnicity information.

Fig. 27. Percent Positive Covid-19 Tests by Race and Ethnicity in Fulton County by 14-day Periods



*Data on Polymerase Chain Reaction (PCR) tests only included.