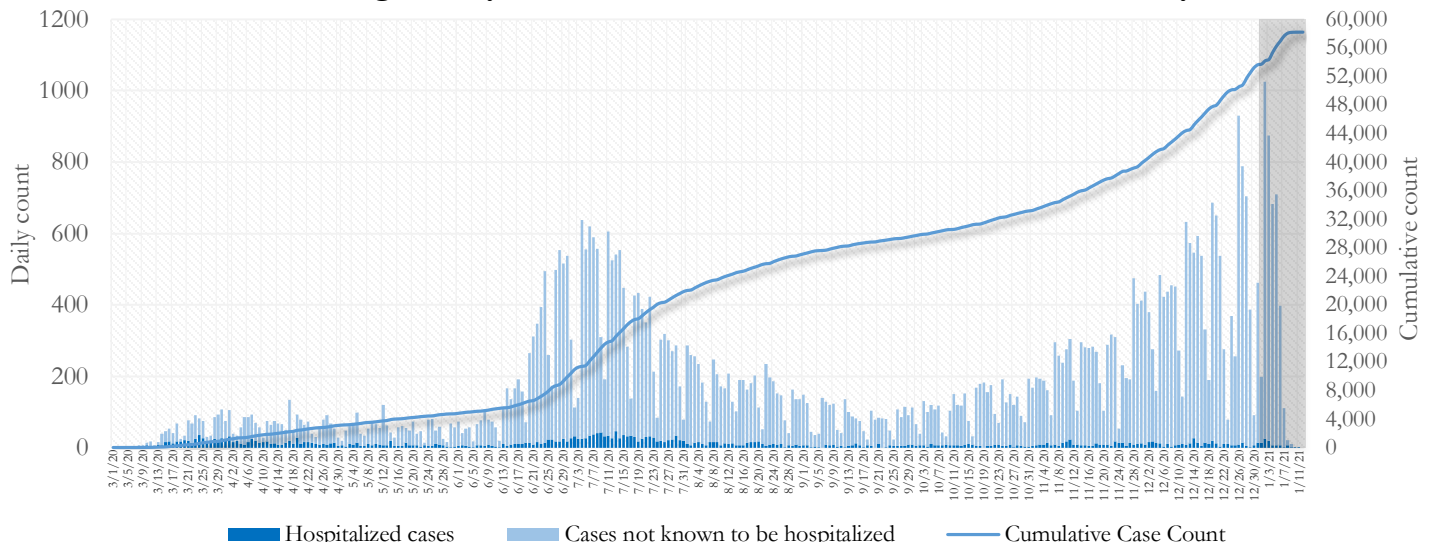


SUMMARY

- As of January 12, 2021, Fulton County has recorded **58,191 cases of the 2019 novel coronavirus (COVID-19)** and **774 confirmed COVID-19 deaths**. 130 deaths are currently being reviewed by GA DPH to confirm cause of death.
- Of the **7,625 new cases** between December 23 and January 5, the central portion of the county (Atlanta) accounted for 38% while the northern and southern parts accounted for 41% and 18% respectively.
- By city, new COVID-19 case rates range from 454.0 per 100,000 persons (College Park) to 960.0 per 100,000 persons (Mountain Park). [**Fulton County Diagnoses Rates (per 100,000 persons): Cumulative – 5294.0; Incidence –693.7**]. See map showing incidence case rate by ZIP code on Pg.17.
- Among all persons diagnosed with COVID-19 in Fulton County since July 1, **4.6% required hospitalization and 0.9% died**.
- Of all testing done in Fulton County between December 21 and January 3, the **percent positivity rate was 12.4%**.

Fig 1. Daily and Cumulative COVID-19 cases in Fulton County, GA



*Counts shown reflect the number of confirmed cases as of 9:00 pm on 1/11/21 using the date of first positive sample collection. Where date of sample collection was not available or missing, the date of report creation in GA SENDSS was used instead. **Note:** Delays in data reporting may cause changes in data counts, particularly in the shaded portion. Data throughout this report are preliminary and subject to ongoing data cleaning processes, and thus are subject to change. This report includes data on confirmed PCR tests only. For data on antigen testing, see the [GA DPH County Indicator Reports here](#).

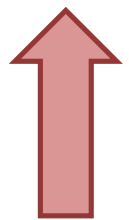
DISTRIBUTION OF COVID-19 CASES BY REGION

New cases: 38% of the new COVID-19 cases in the past 2 weeks occurred in Atlanta while 41% and 18% occurred in the Northern and Southern regions of the county respectively.

Fulton Region	% Cumulative count	% New cases*
Atlanta	42.4%	38.0%
North ¹	33.7%	41.1%
South ²	19.0%	17.5%
Unincorporated/Unknown	4.9%	3.4%

¹Includes all Fulton County cities north of Atlanta (Alpharetta, Johns Creek, Milton, Mountain Park, Roswell, Sandy Springs) | ²Includes all cities south of Atlanta (Chattahoochee Hills, College Park, East Point, Fairburn, Hapeville, Palmetto, South Fulton, and Union City) ***New cases:** Cases diagnosed in the past 2 weeks only (between 12/23/20 – 1/5/20).

In the recent two week reporting period (12/23-1/5), there were more new cases of COVID-19 in Fulton County than the previous two weeks (12/9-12/22).



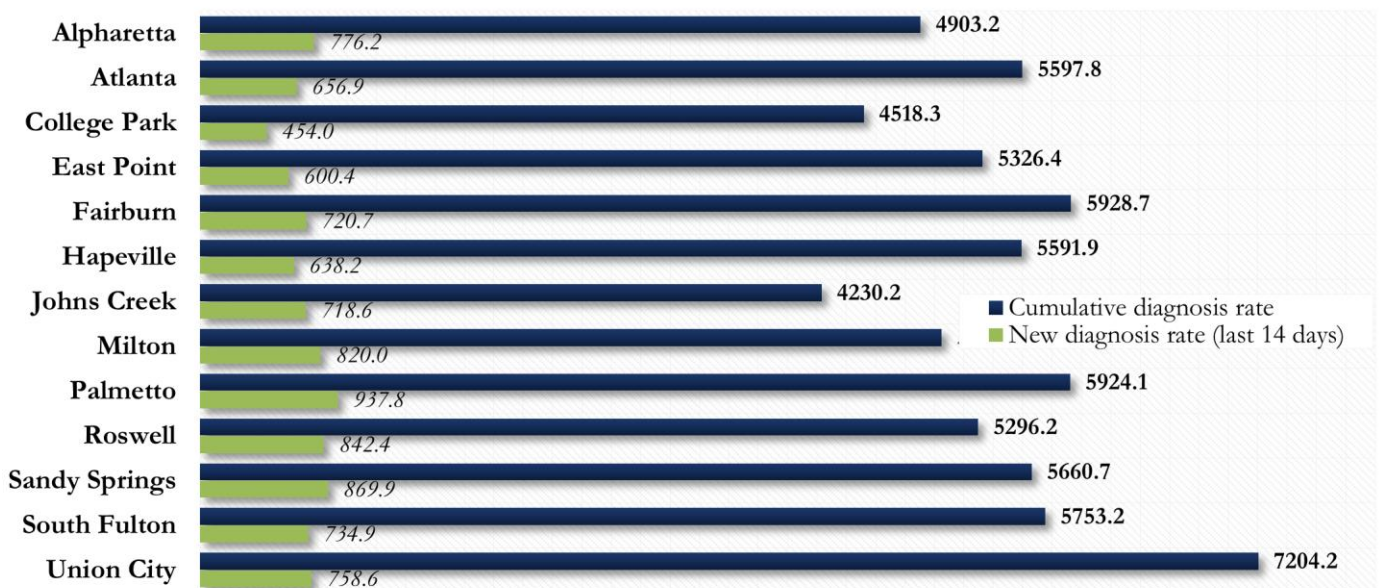
*Delayed a week to account for testing results turnaround time.

COVID-19 CASE COUNTS AND RATES BY CITY

	Prior (1/8/21)	Current Total (1/12/21)			New Cases (Period: 12/9/20 – 1/5/21) ¹			
	Count	Count	%	Cum. Rate ²	Recent 14 d. (12/23–1/5)	Prior 14 d. (12/9–12/22)	% change ³	Rate ⁴ (Last 14 d).
Alpharetta	2941	3171	5.4%	4903.2	502	423	↑ 18.7%	776.2
Atlanta	23547	24696	42.4%	5597.8	2898	2614	↑ 10.9%	656.9
Chattahoochee Hills	80	84	0.1%	2929.9	15	13	↑ 15.4%	523.2
College Park	609	627	1.1%	4518.3	63	50	↑ 26.0%	454.0
East Point	1767	1863	3.2%	5326.4	210	167	↑ 25.7%	600.4
Fairburn	831	872	1.5%	5928.7	106	82	↑ 29.3%	720.7
Hapeville	350	368	0.6%	5591.9	42	26	↑ 61.5%	638.2
Johns Creek	3261	3538	6.1%	4230.2	601	492	↑ 22.2%	718.6
Milton	1763	1927	3.3%	5048.3	313	248	↑ 26.2%	820.0
Mountain Park	20	22	0.0%	3520.0	<10	<10	↑ 20.0%	960.0
Palmetto	236	259	0.4%	5924.1	41	37	↑ 10.8%	937.8
Roswell	4670	4992	8.6%	5296.2	794	567	↑ 40.0%	842.4
Sandy Springs	5634	5967	10.3%	5660.7	917	731	↑ 25.4%	869.9
South Fulton	5190	5472	9.4%	5753.2	699	498	↑ 40.4%	734.9
Union City	1435	1510	2.6%	7204.2	159	170	↓ 6.5%	758.6
Unknown	5857	2823	4.9%	-	252	143	-	-

¹**New cases:** Cases diagnosed in most recent 28 days (based on reported dates of positive sample collection). To allow for lag in reporting results of new diagnoses from samples collected in the most recent week, data used for incident diagnoses analyses were moved back by one week. ²**Cumulative diagnosis rate:** Population estimates from US Census Bureau used to calculate cumulative diagnoses rate. All rates shown are per 100,000 persons. ³**% change:** These reflect the percentage increase or decrease in new diagnoses between the 14 days preceding the most recent 7 days and the 14 days preceding that. ⁴**(Incidence) Rate:** Rate of new diagnoses in the last 14 day period preceding the immediate past week. ****Data cleaning** (either during case interviews or address geo-coding) may lead to reassignment of few cases from one territory to another based on their corrected addresses. These may appear as “decreases” when compared to the previous day’s count. These do not reflect errors in the data collection or analysis process but only reflect the minor day-to-day fluctuations in case counts that arise in an evolving public health database like COVID’s. ⁵Incidence rate is skewed high due to small population. **Note: All data reported are preliminary and subject to change.**

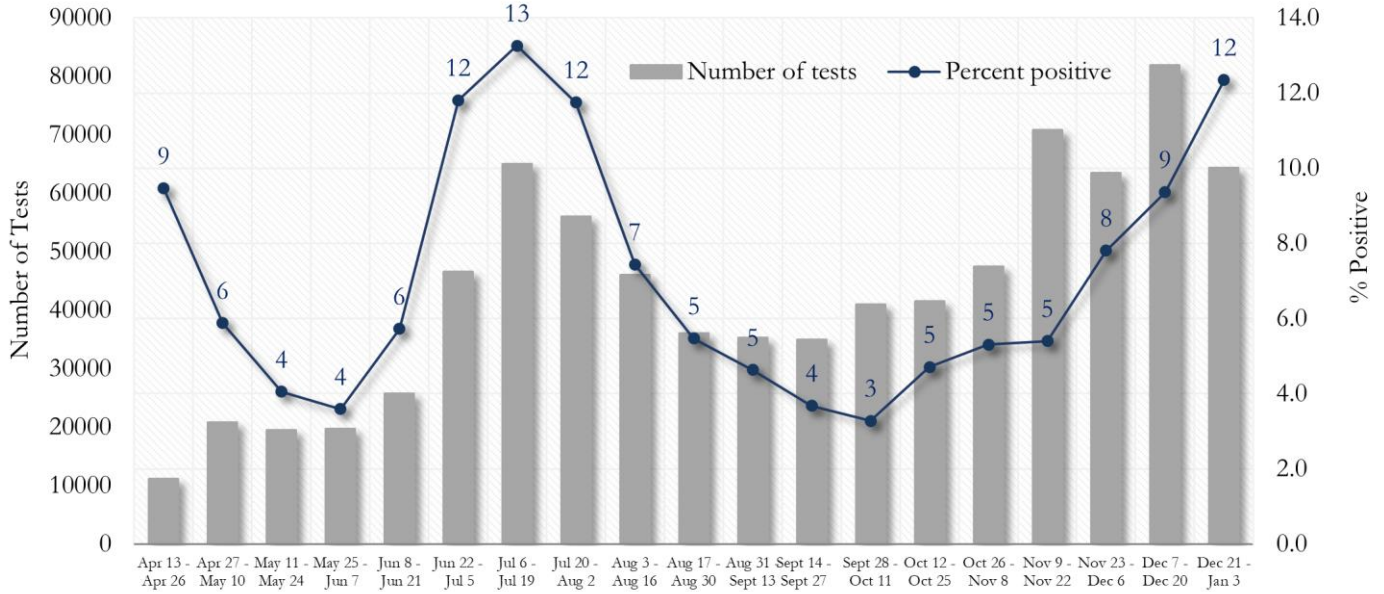
Fig. 2. Incident & Cumulative Diagnoses Rates for COVID-19 by City



*Rates shown are per 100,000 persons | **Note:** Mass testing in specific locations (e.g. long term care facilities) may cause sharp increases in the cumulative rate of COVID-19 diagnosis in those territories. All data shown are preliminary and are subject to change as testing results get updated.

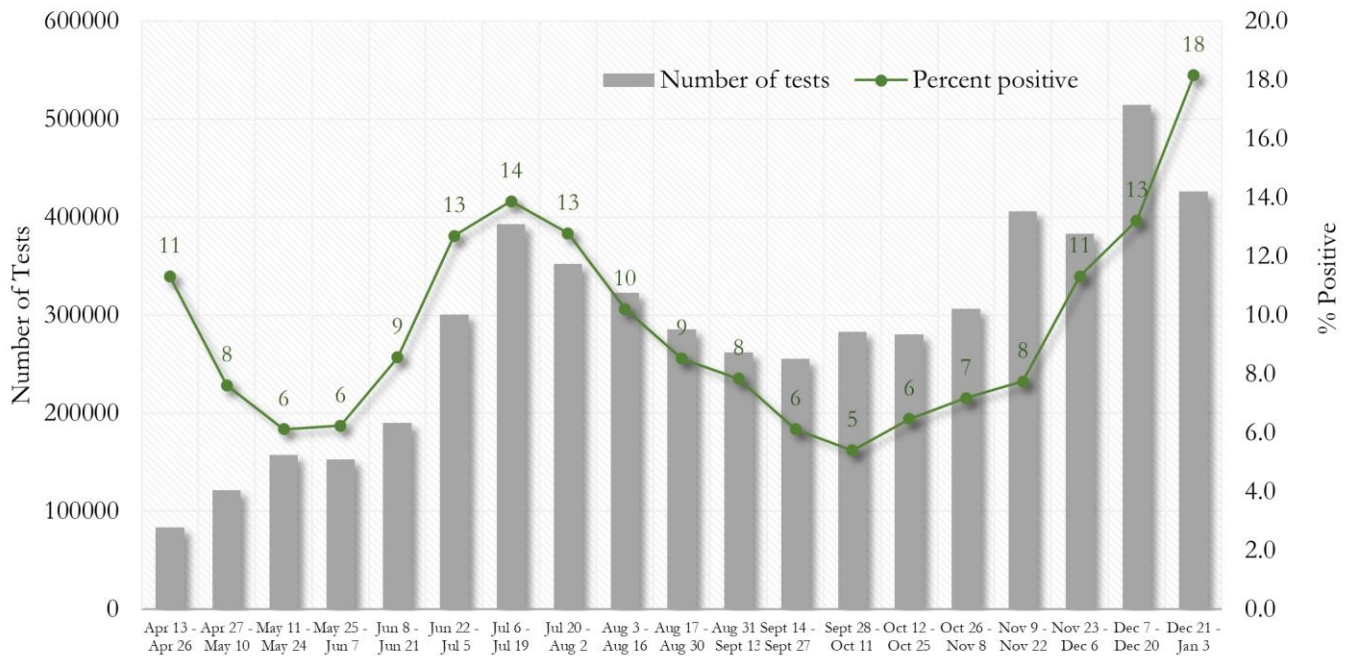
COVID-19 TESTING AND POSITIVITY IN FULTON COUNTY AND GEORGIA

Fig. 3. Trends in Positive COVID-19 Tests in Fulton County by 14-day Periods



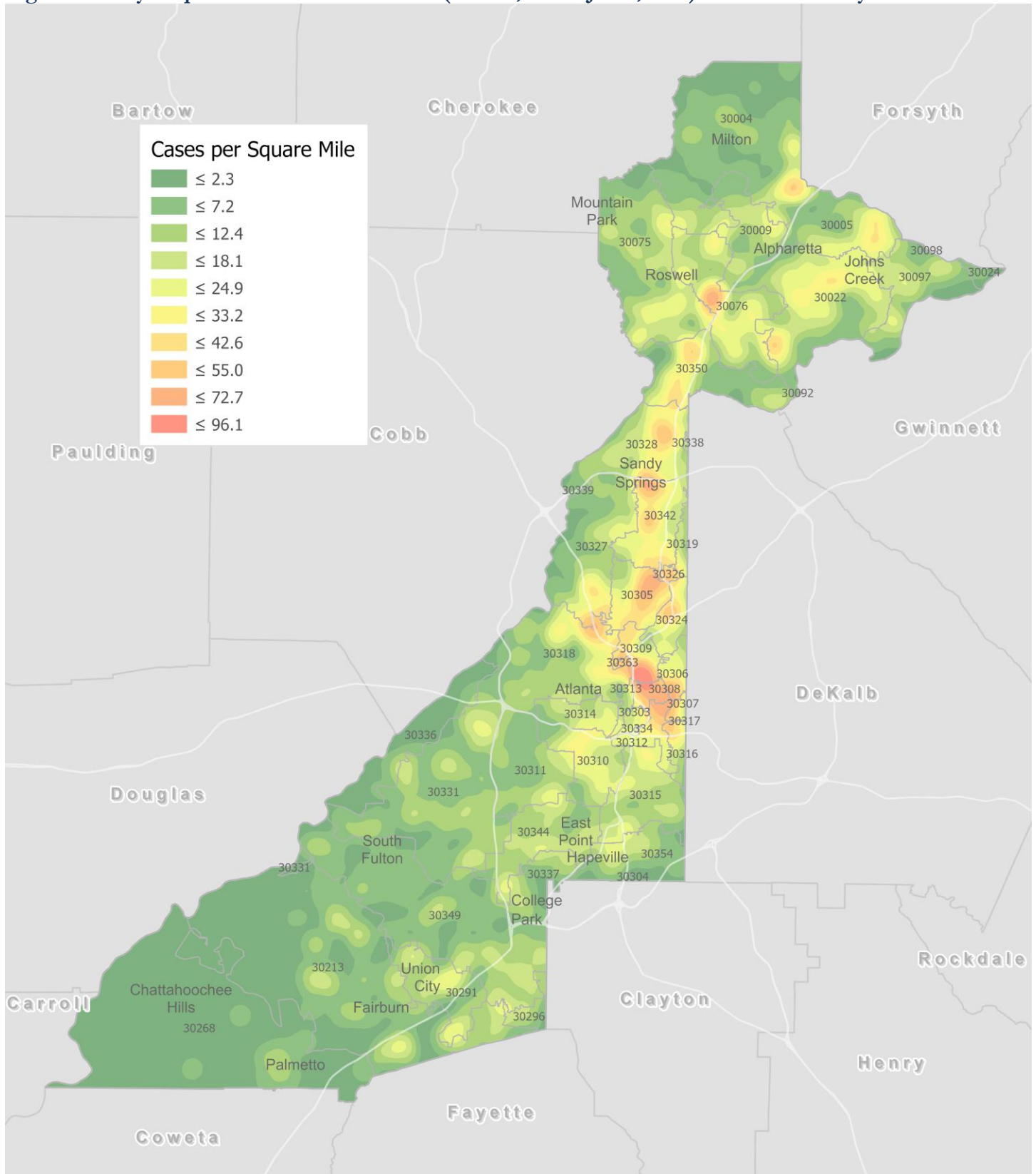
*Data on Polymerase Chain Reaction (PCR) tests only included. This rate is subject to change as more test results are reported.

Fig. 4. Trends in Positive COVID-19 Tests in Georgia by 14-day Periods



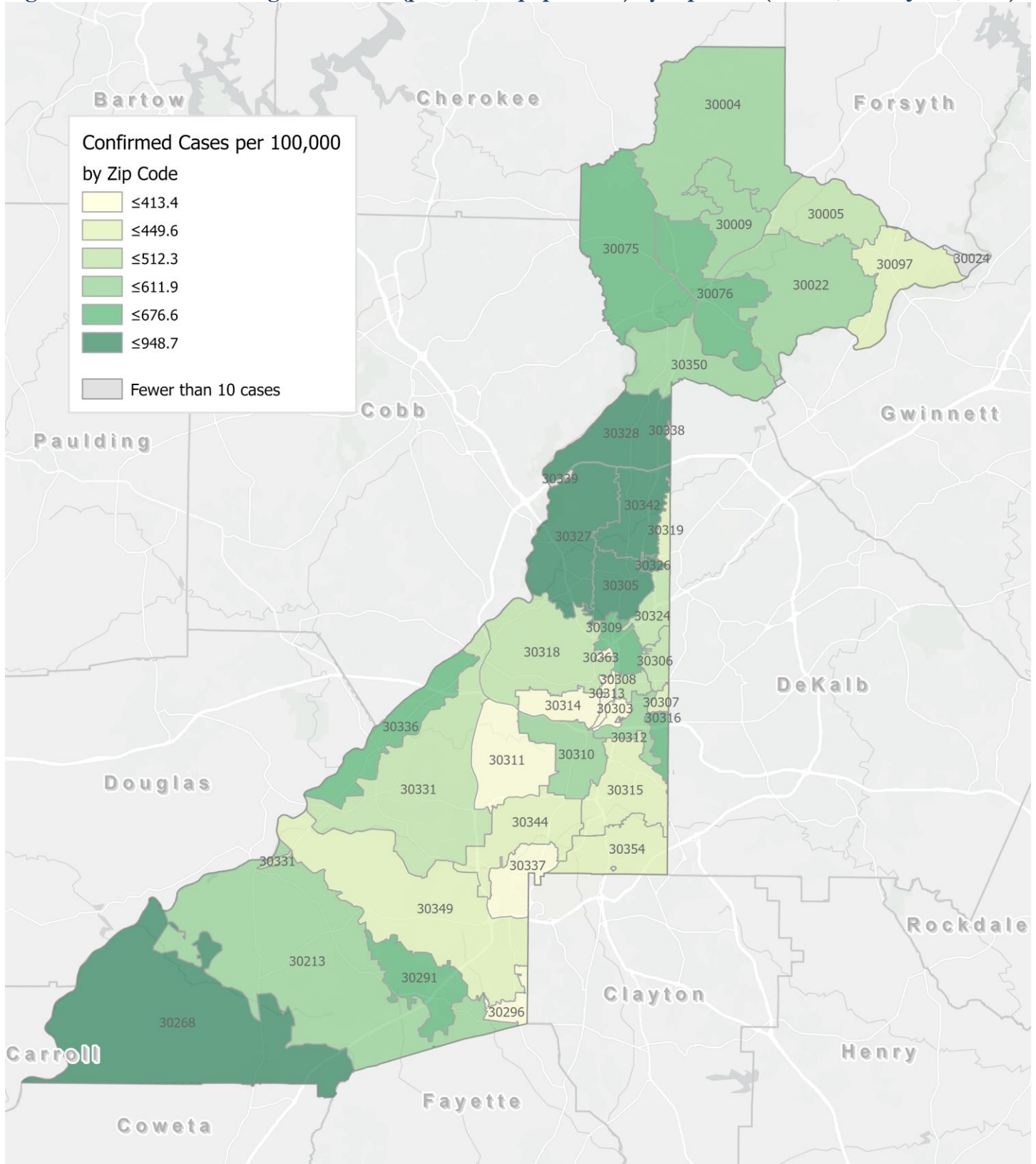
*Data on Polymerase Chain Reaction (PCR) tests only included. This rate is subject to change as more test results are reported.

Fig. 5. Density Map – New COVID-19 Cases (Dec 23, 2020– Jan 5, 2021) in Fulton County



New COVID-19 cases: Cases diagnosed in most recent 14 days (based on reported dates of positive sample collection). To allow for lag in reporting results of positive cases from samples collected in the immediate past 7 days, data used for incident diagnoses analyses are moved back by one week. Map reflects new COVID-19 cases diagnosed between Dec 23rd, 2020 and Jan 5th, 2021 across Fulton County, excluding LTCF cases.

Fig. 6. New COVID-19 Diagnoses Rates (per 100,000 population) by Zip Code (Dec 23, 2020– Jan 5, 2021)



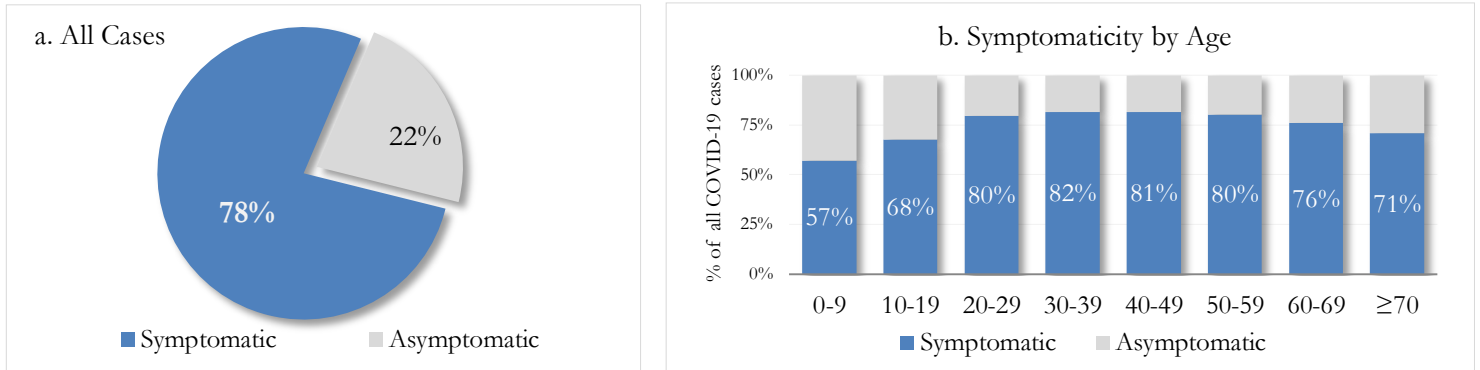
*Rates shown are per 100,000 populations.

New COVID-19 cases: Cases diagnosed in most recent 14 days (based on reported dates of positive sample collection). To allow for lag in reporting results of positive cases from samples collected in the immediate past 7 days, data used for incident diagnoses analyses are moved back by one week. Data used excludes outbreak-related cases at long-term care facilities and map shown reflects only the new non-LTCF cases diagnosed between the dates shown in map title. See page 17 for zip code break down table.

REPORTING SYMPTOMS AMONG PERSONS WITH COVID-19 IN FULTON

People with COVID-19 have reported a wide range of symptoms ranging from mild symptoms to severe illness. Symptoms may appear 2-14 days after exposure to the virus. Symptoms reported include: cough, shortness of breath/difficulty breathing, fever, chills, muscle pain, headache, sore throat, congestion, nausea or vomiting, diarrhea, or new loss of taste or smell – Centers for Disease Control and Prevention (CDC) <https://www.cdc.gov/coronavirus/2019-ncov/symptoms-testing/symptoms.html>

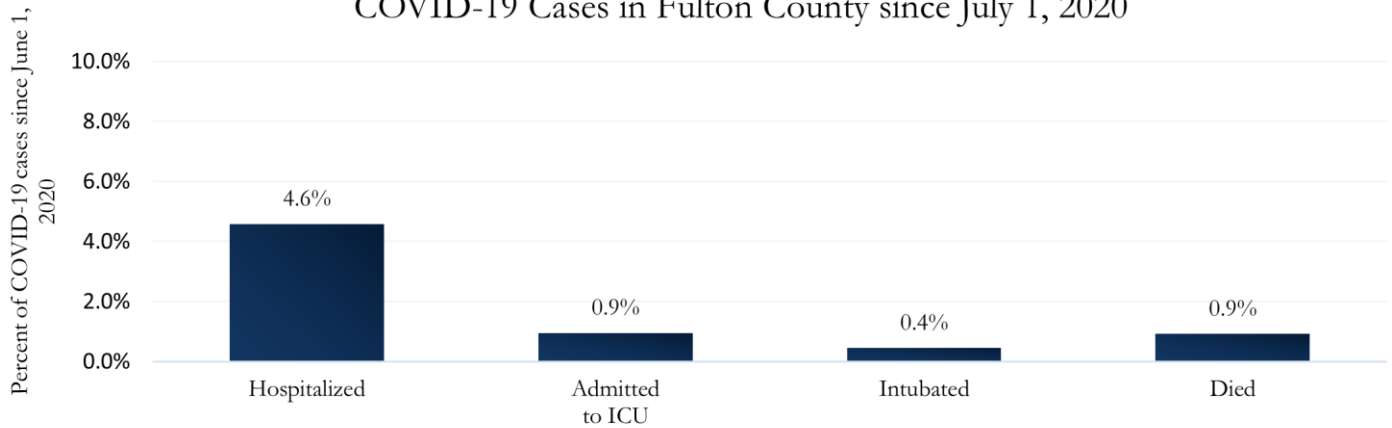
Fig. 7a & b. Total Proportion Reporting Symptoms in Fulton County



COVID-19 cases who have been case interviewed or had medical charts reviewed as of 1/12/21 only. n = 33,491

COVID-19 HOSPITALIZATIONS, ICU ADMISSIONS AND DEATHS IN FULTON

Fig. 8. Hospitalizations, ICU Admissions, Intubations, and Deaths among COVID-19 Cases in Fulton County since July 1, 2020



DEMOGRAPHIC DISTRIBUTIONS – COVID-19 CASES AND DEATHS

A. Distribution of COVID-19 cases by gender, age, and race in Fulton County by Fulton Region

	North Fulton Cities ¹ Count (%)	Atlanta Count (%)	South Fulton Cities ² Count (%)	Unknown City Count (%)	All Fulton Count (%)
Total COVID-19 cases	19617	24696	11055	2823	58191
Gender: Female	10208 (52%)	12469 (50%)	6338 (57%)	1437 (51%)	30452 (52%)
Male	9260 (47%)	11971 (48%)	4650 (42%)	1315 (47%)	27196 (47%)
Unknown*	149 (1%)	256 (1%)	67 (1%)	71 (3%)	543 (1%)
Age: 0-9	755 (4%)	575 (2%)	402 (4%)	79 (3%)	1811 (3%)
10-19	2671 (14%)	1794 (7%)	874 (8%)	201 (7%)	5540 (10%)
20-29	3953 (20%)	7141 (29%)	2025 (18%)	696 (25%)	13815 (24%)
30-39	2990 (15%)	5474 (22%)	2237 (20%)	588 (21%)	11289 (19%)
40-49	3108 (16%)	3310 (13%)	2007 (18%)	442 (16%)	8867 (15%)
50-59	3081 (16%)	2724 (11%)	1604 (15%)	375 (13%)	7784 (13%)
60-69	1606 (8%)	1792 (7%)	1014 (9%)	225 (8%)	4637 (8%)
≥70	1443 (7%)	1822 (7%)	879 (8%)	205 (7%)	4349 (7%)
Unknown*	10 (0%)	64 (0%)	13 (0%)	12 (0%)	99 (0%)
Race: Asian, NH	1097 (6%)	481 (2%)	58 (1%)	72 (3%)	1708 (3%)
Black, NH	2070 (11%)	10306 (42%)	7912 (72%)	972 (34%)	21260 (37%)
White, NH	8761 (45%)	7115 (29%)	639 (6%)	730 (26%)	17245 (30%)
Hispanic	3120 (16%)	1508 (6%)	865 (8%)	273 (10%)	5766 (10%)
Other, NH	1154 (6%)	1134 (5%)	281 (3%)	143 (5%)	2712 (5%)
Unknown*	3415 (17%)	4152 (17%)	1300 (12%)	633 (22%)	9500 (16%)

*Unknown includes cases not yet interviewed.

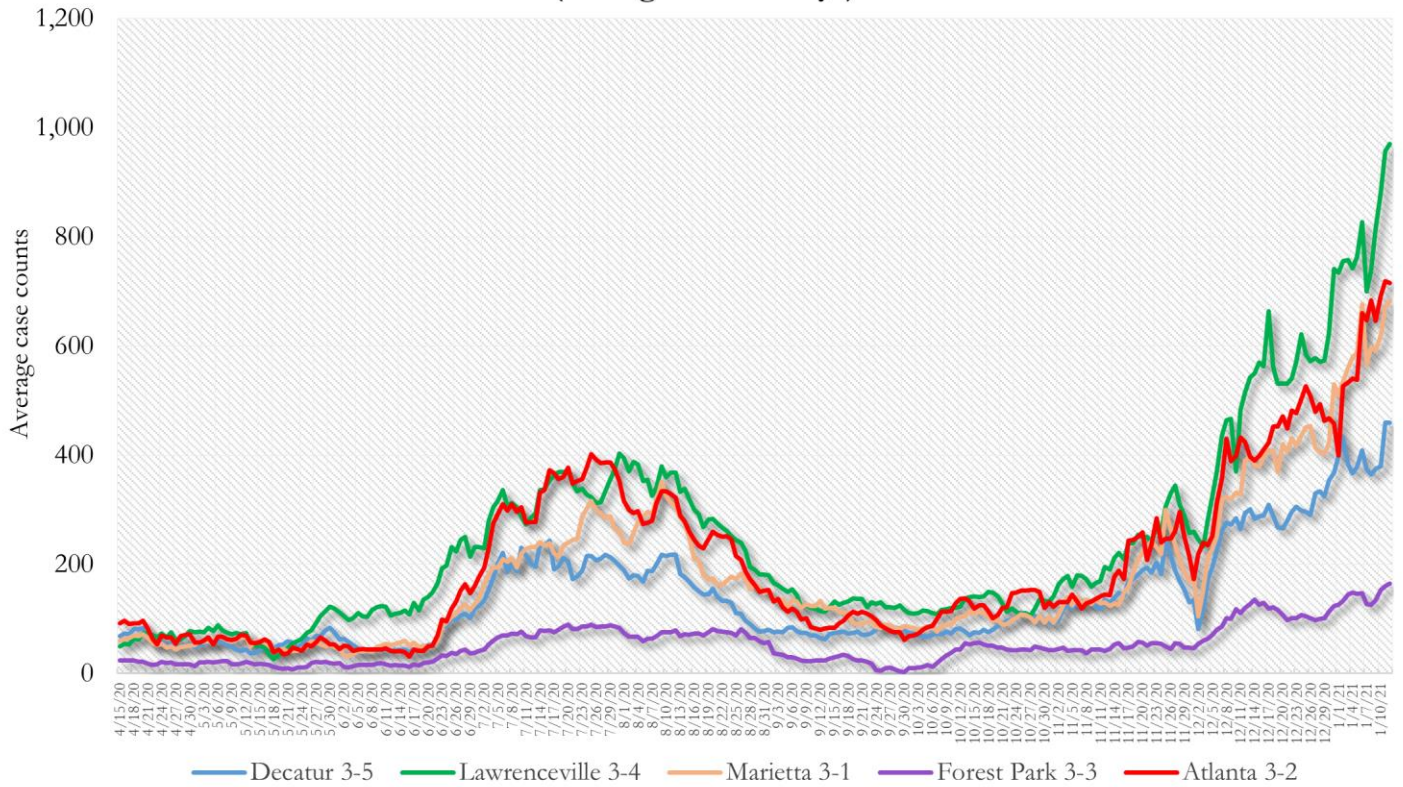
B. Distribution of COVID-19 deaths by gender, age, and race in Fulton County by Fulton Region

	North Fulton Cities ¹ Count (%)	Atlanta Count (%)	South Fulton Cities ² Count (%)	Unknown City Count (%)	All Fulton Count (%)
Total COVID-19 deaths	167	369	208	30	774
Gender: Female	78 (47%)	168 (46%)	104 (50%)	11 (37%)	361 (47%)
Male	89 (53%)	201 (54%)	104 (50%)	18 (60%)	412 (53%)
Unknown	0	0	0	<10	<10
Age: ≤ 29	<10	<10	<10	0	<10
30-39	<10	<10	<10	<10	14 (2%)
40-49	<10	<10	11 (5%)	<10	28 (4%)
50-59	<10	31 (8%)	25 (12%)	<10	67 (9%)
60-69	20 (12%)	69 (19%)	46 (22%)	<10	138 (18%)
≥70	132 (79%)	249 (67%)	121 (58%)	20 (67%)	522 (67%)
Unknown	0	0	0	0	0
Race: Asian, NH	<10	<10	<10	<10	12 (2%)
Black, NH	28 (17%)	292 (79%)	171 (82%)	11 (37%)	502 (65%)
White, NH	120 (72%)	63 (17%)	27 (13%)	16 (53%)	226 (29%)
Hispanic	15 (9%)	<10	<10	<10	30 (4%)
Other, NH	0	<10	<10	0	<10
Unknown	0	<10	0	0	<10

¹Includes all Fulton County cities north of Atlanta (Alpharetta, Johns Creek, Milton, Mountain Park, Roswell, Sandy Springs) ²Includes all cities south of Atlanta (College Park, Chattahoochee Hills, East Point, Fairburn, Hapeville, Palmetto, South Fulton, Union City). **Note:** All data reported are preliminary and subject to change. This table includes data on only confirmed COVID-19 deaths and is subject to change as GA DPH completes cause of death confirmation processes.

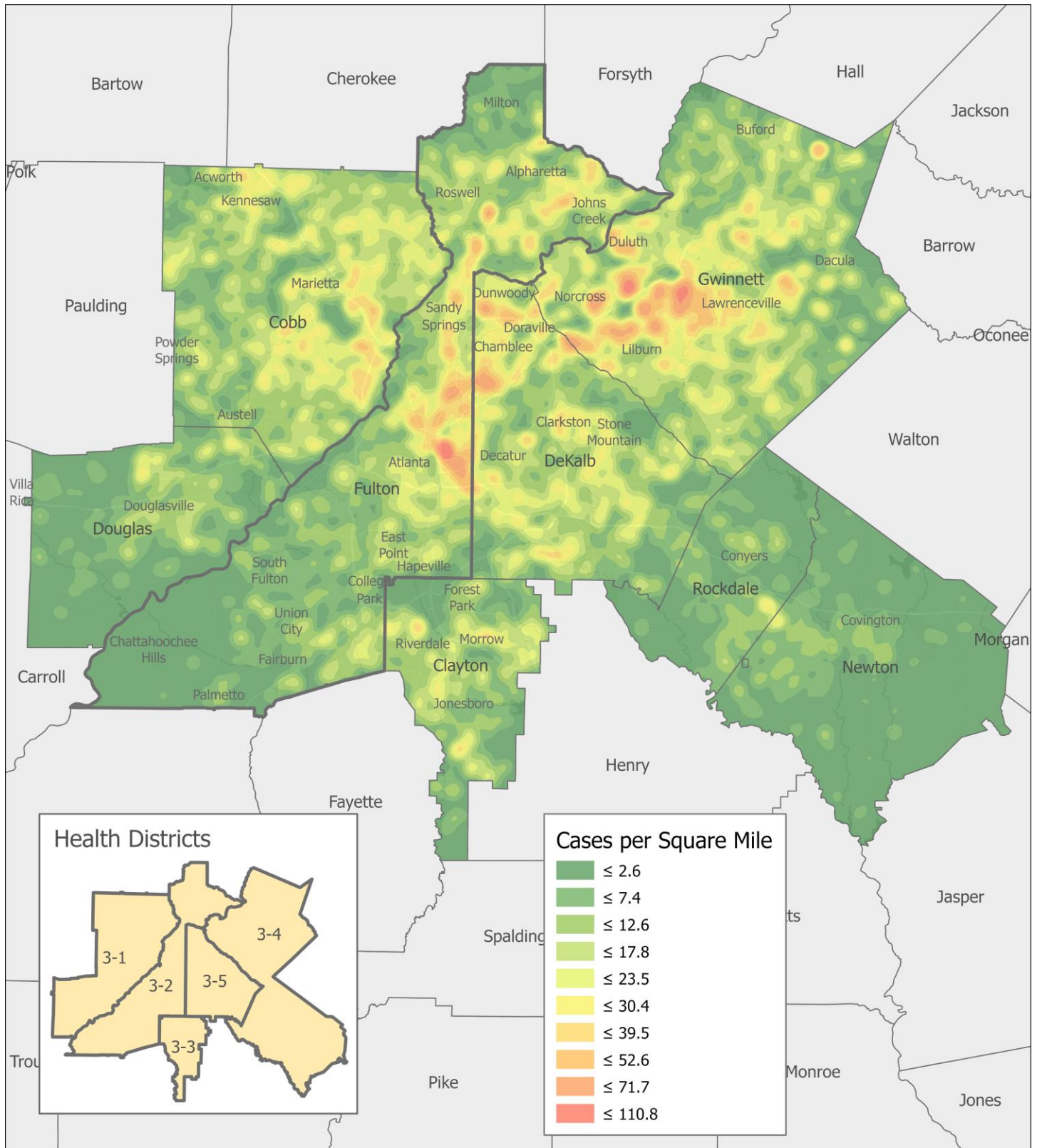
COVID-19 CASE TRENDS IN FULTON AND SURROUNDING DISTRICTS

**Fig. 9. Daily Case Counts for Atlanta Metro Districts
(Averaged over 7 days)**



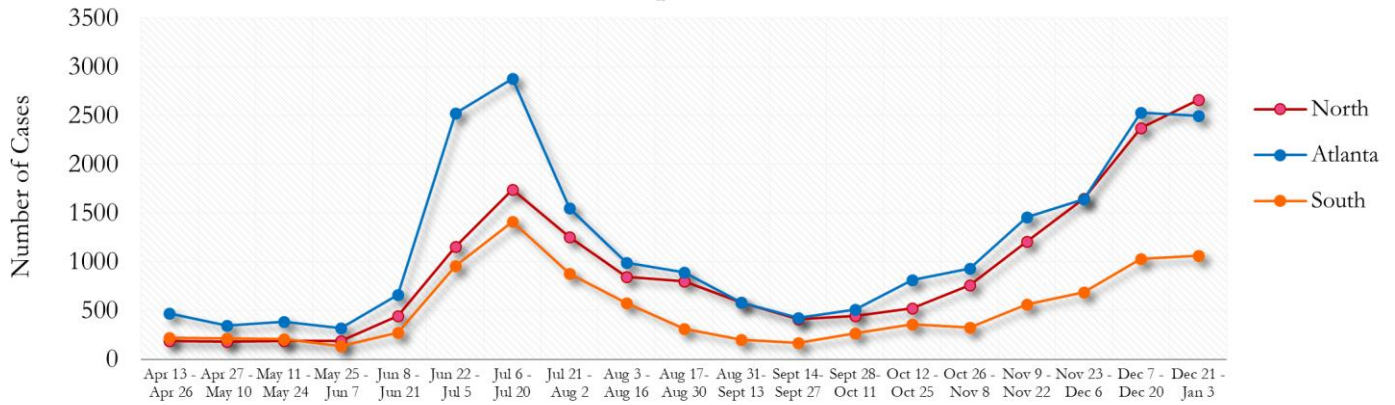
*Graph shows the average number of cases calculated from the daily cumulative case counts in the metro Atlanta districts. Increases in daily cumulative case counts may include cases diagnosed earlier during the pandemic but were only recently reported to the state as cases diagnosed belonging to these districts. Delays in data reporting may cause the trend line to appear as decreasing.

Fig. 10. COVID-19 Cases in Fulton County and Surrounding Districts (Dec 23, 2020– Jan 5, 2021)



TRENDS IN COVID-19 CASES AMONG DEMOGRAPHIC GROUPS (14 DAY PERIODS)

Fig. 11. Trends in Geographic distribution of COVID-19 Cases in Fulton County by 14-day periods



*North - Includes all Fulton cities north of Atlanta (Alpharetta, Johns Creek, Milton, Mountain Park, Roswell, Sandy Springs)

*South - Includes all Fulton cities south of Atlanta (College Park, Chattahoochee Hills, East Point, Fairburn, Hapeville, Palmetto, South Fulton, and Union City)

Fig. 12. Trends in Racial Distribution of COVID-19 Cases in Fulton County by 14-day periods

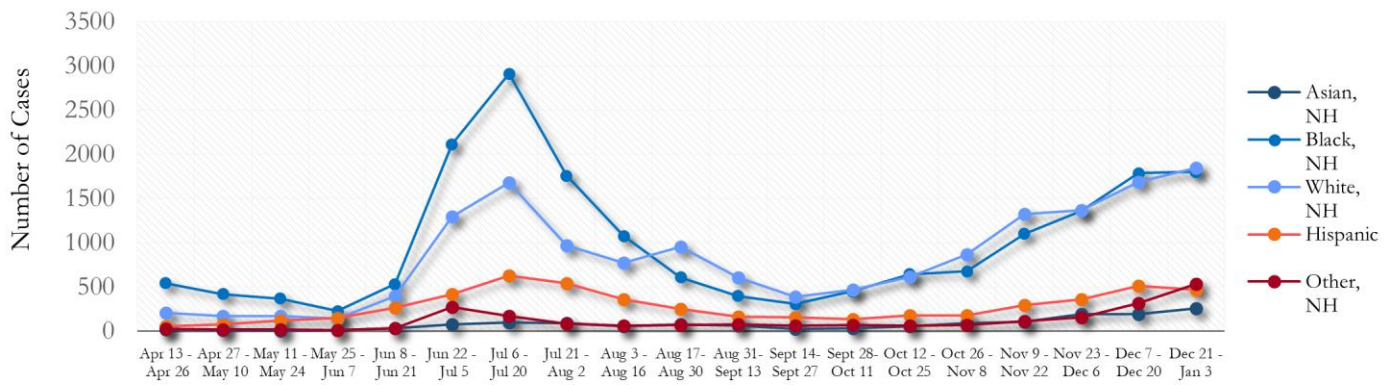
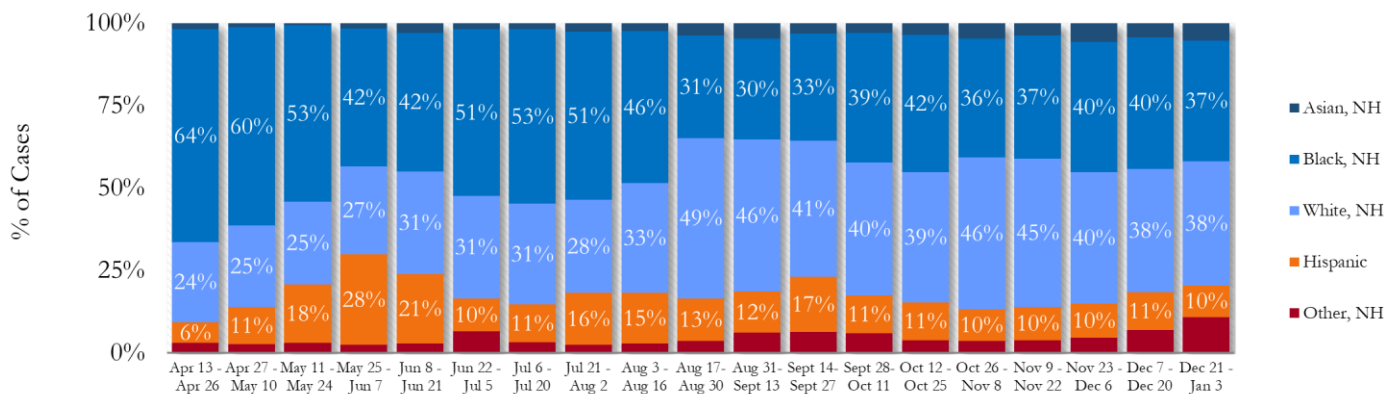


Fig. 13. Racial Distribution of COVID-19 Cases in Fulton County by 14-day periods



About 16% of COVID cases are missing data on patient race and ethnicity. The majority of new cases in the past two weeks were Black, NH (37%) and White, NH (38%).

Fig. 14. Trends in Gender Distribution of COVID-19 Cases in Fulton County by 14-day periods

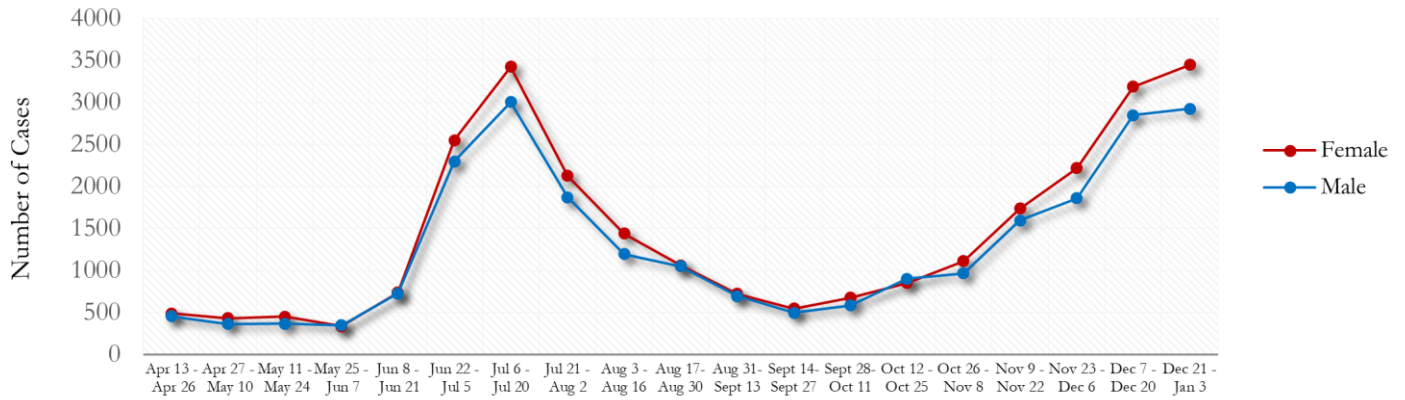
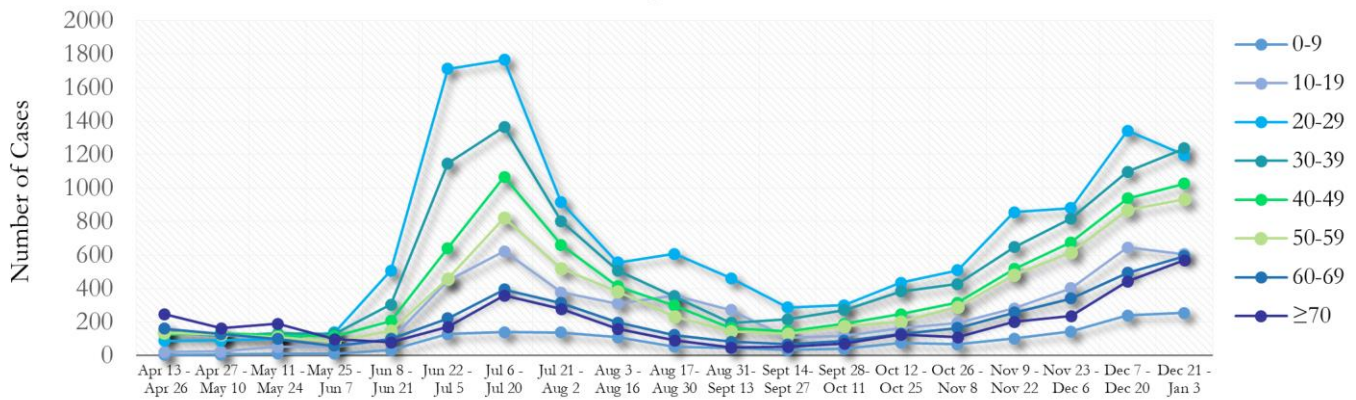
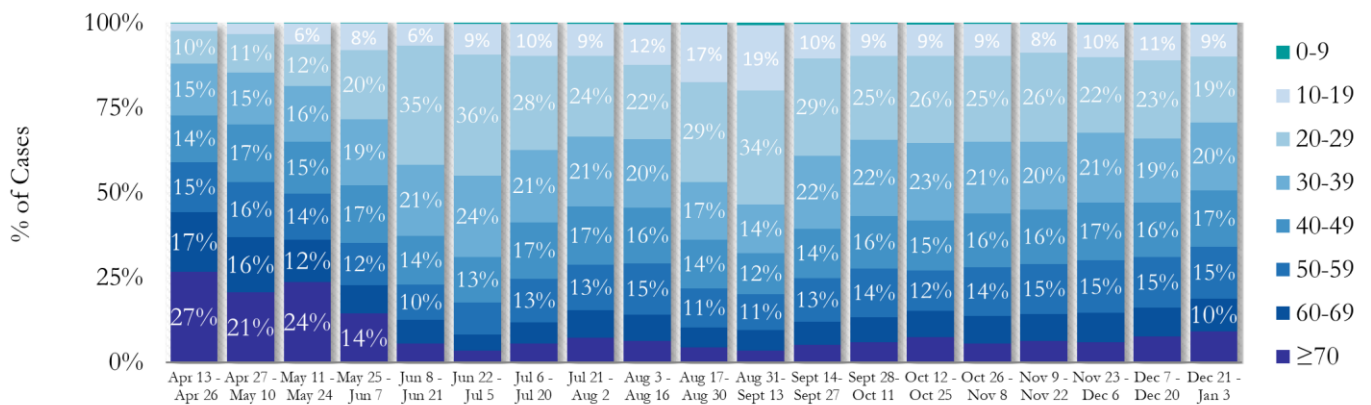


Fig. 15. Trends in Age Distribution of COVID-19 Cases in Fulton County by 14-day periods



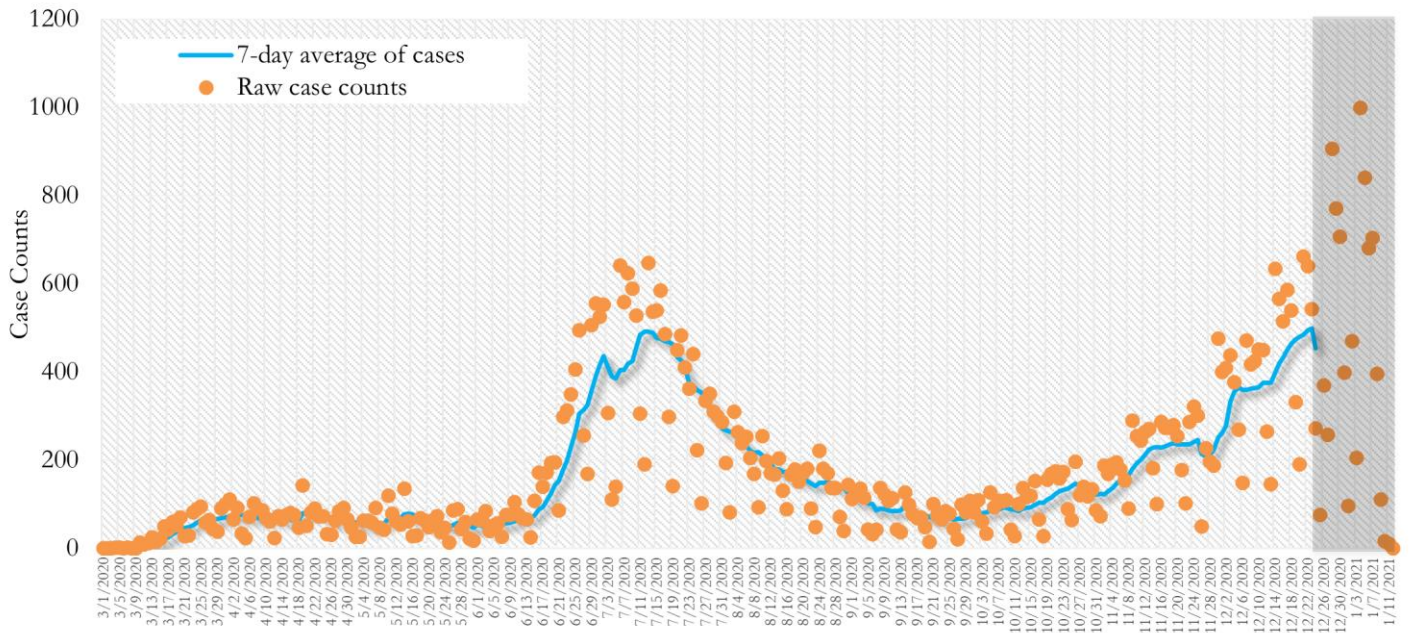
Earlier (March-May 2020) large proportions of reported cases were among persons aged 60 and older. In the most recent two weeks, 30-39 year olds accounted for the highest number of new cases among all age groups, followed by 20-29 year olds.

Fig. 16. Age Distribution of COVID-19 Cases in Fulton County by 14-day periods



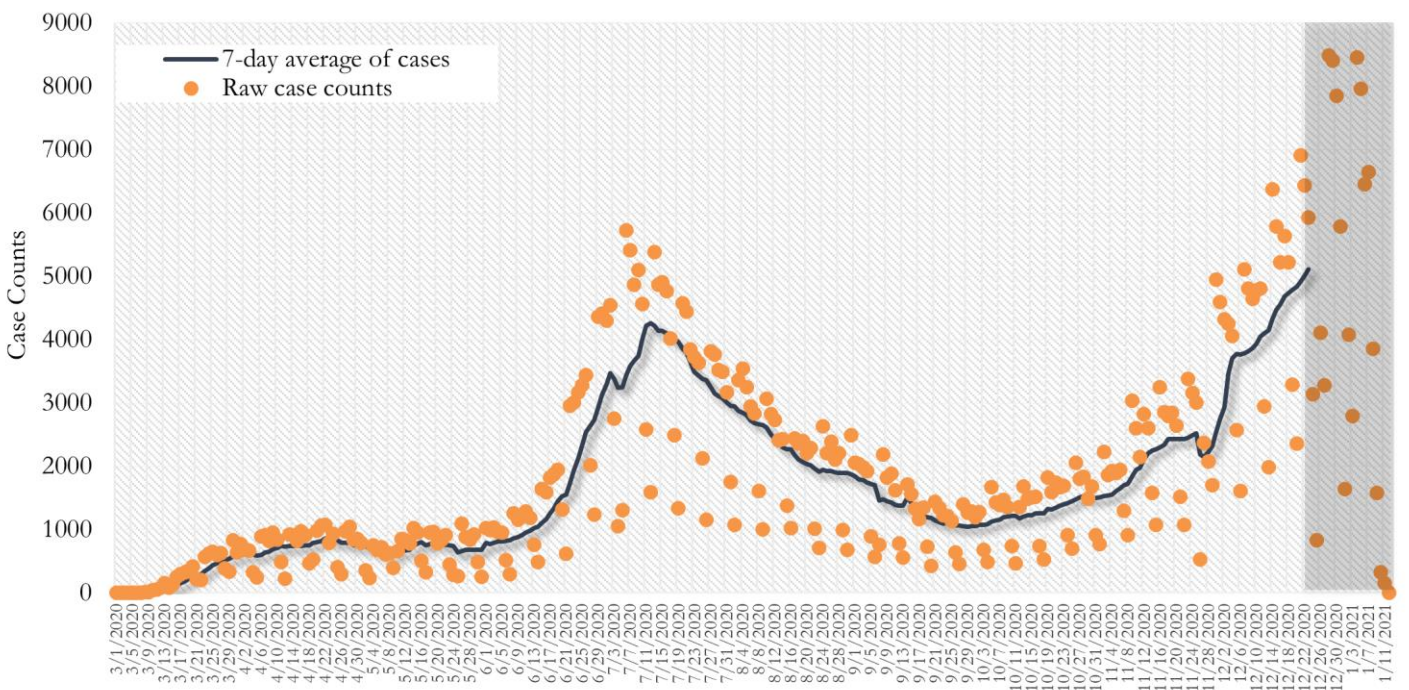
TRENDS IN COVID-19 CASES, HOSPITALIZATIONS AND DEATHS (7-DAY MOVING AVE.)

Fig. 17. New COVID-19 Cases in Fulton County Daily (Averaged over 7 days)



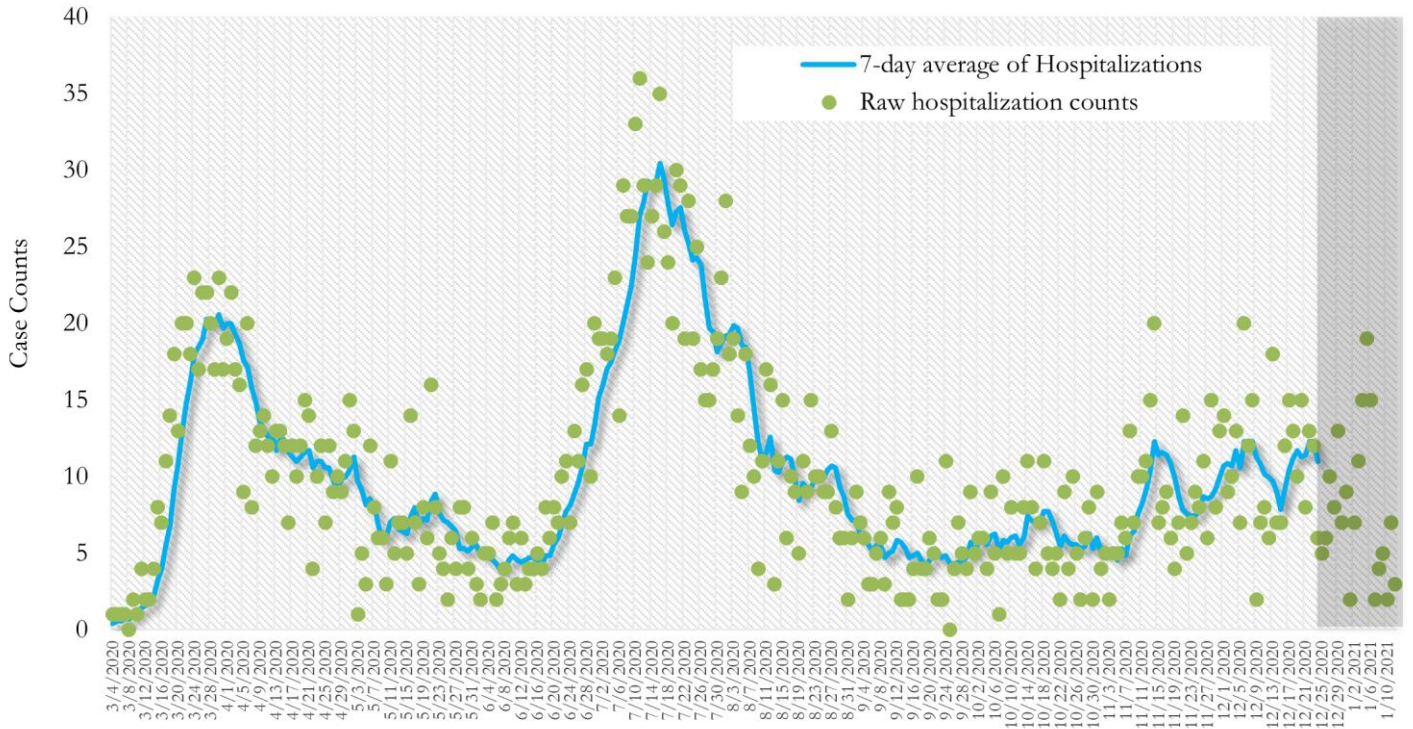
*Date of collection of first positive sample used (report creation date used where sample collection date is missing). Graph above reflects the trend in COVID-19 diagnosis. Due to the high volume of testing in recent weeks, there have been delays in reporting lab results. Thus, the trend is subject to change as more lab results get added to the state surveillance database.

Fig. 18. New COVID-19 Cases in Georgia State Daily (Averaged over 7 days)



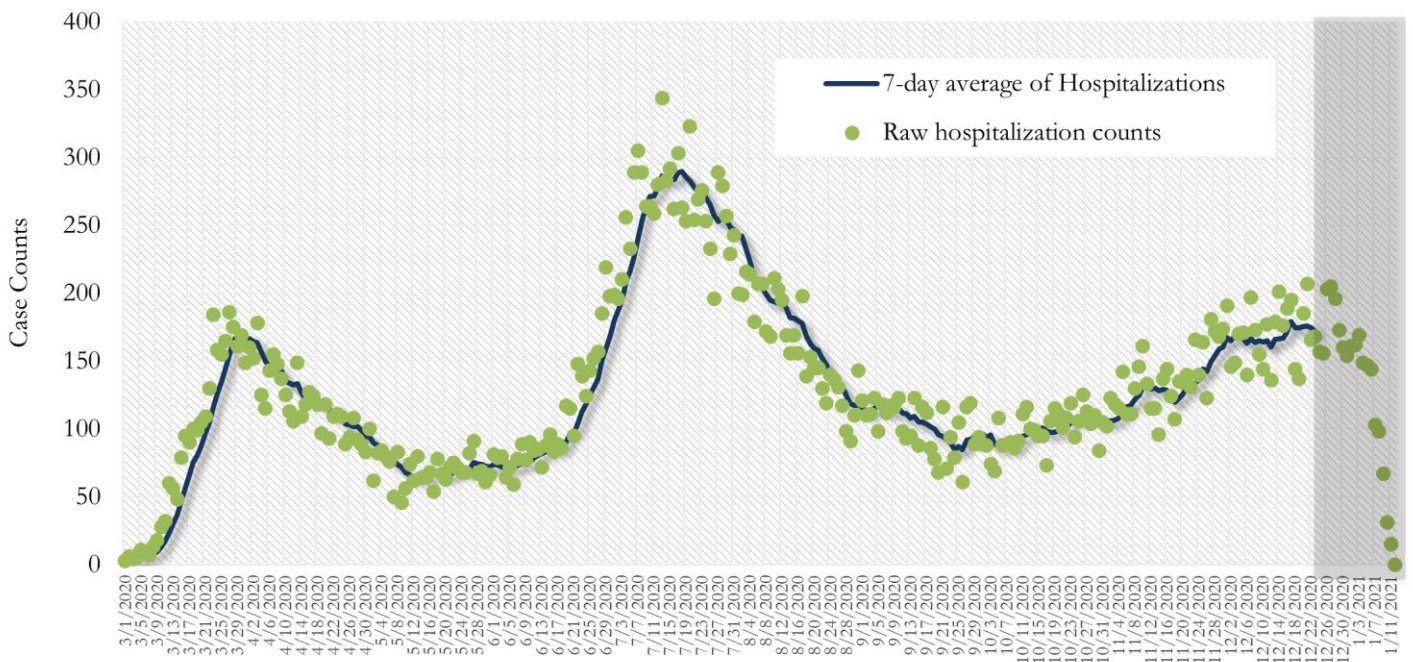
*Date of collection of first positive sample used (report creation date used where sample collection date is missing). Graph above reflects the trend in COVID-19 diagnosis. Due to the high volume of testing in recent weeks, there have been delays in reporting lab results. Thus, the trend is subject to change as more lab results get added to the state surveillance database.

Fig. 19. COVID-19 Hospitalizations in Fulton County Daily (Averaged over 7 days)



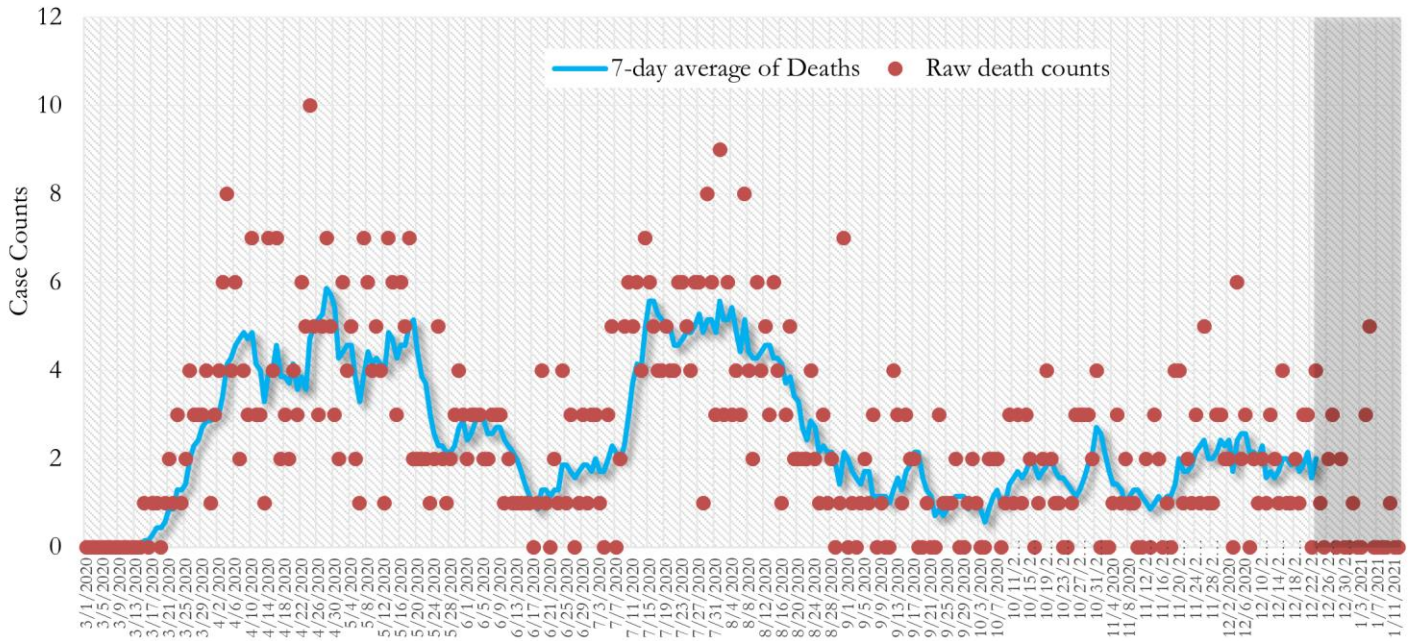
*Reported date of hospital admission used. Graph above reflects the trend in COVID-19 hospitalizations. Due to the high volume of new cases being added daily, there have been delays in reporting hospitalization data. Thus, the trend is likely to change as more hospitalization data is reported in the state surveillance database.

Fig. 20. COVID-19 Hospitalizations in Georgia State Daily (Averaged over 7 days)



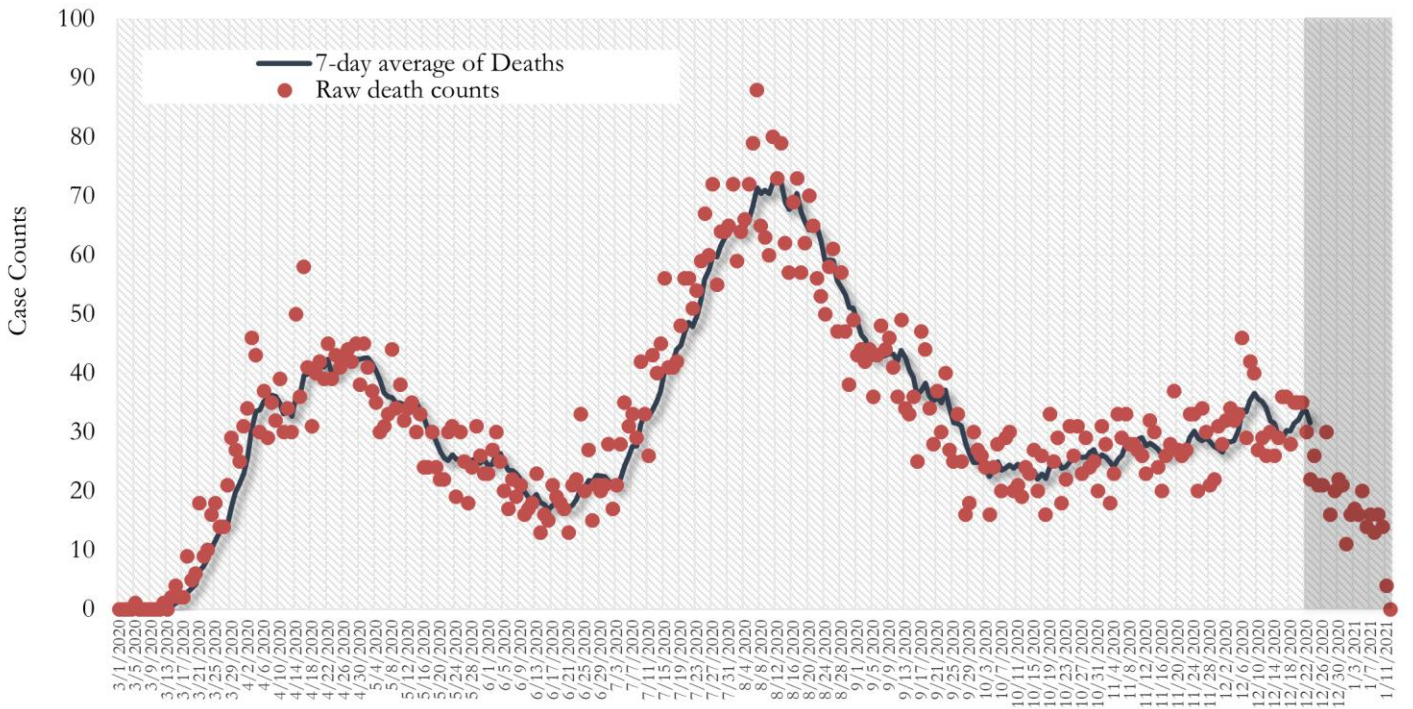
*Reported date of hospital admission used. Graph above reflects the trend in COVID-19 hospitalizations. Due to the high volume of new cases being added daily, there have been delays in reporting hospitalization data. Thus, the trend is likely to change as more hospitalization data is reported in the state surveillance database.

Fig. 21. COVID-19 Deaths in Fulton County Daily (Averaged over 7 days)



* Reported date of death used. Graph above reflects the trend in deaths attributed to COVID-19. The trend is likely to change as more data on deaths among persons with COVID-19 is reported in the state surveillance database.

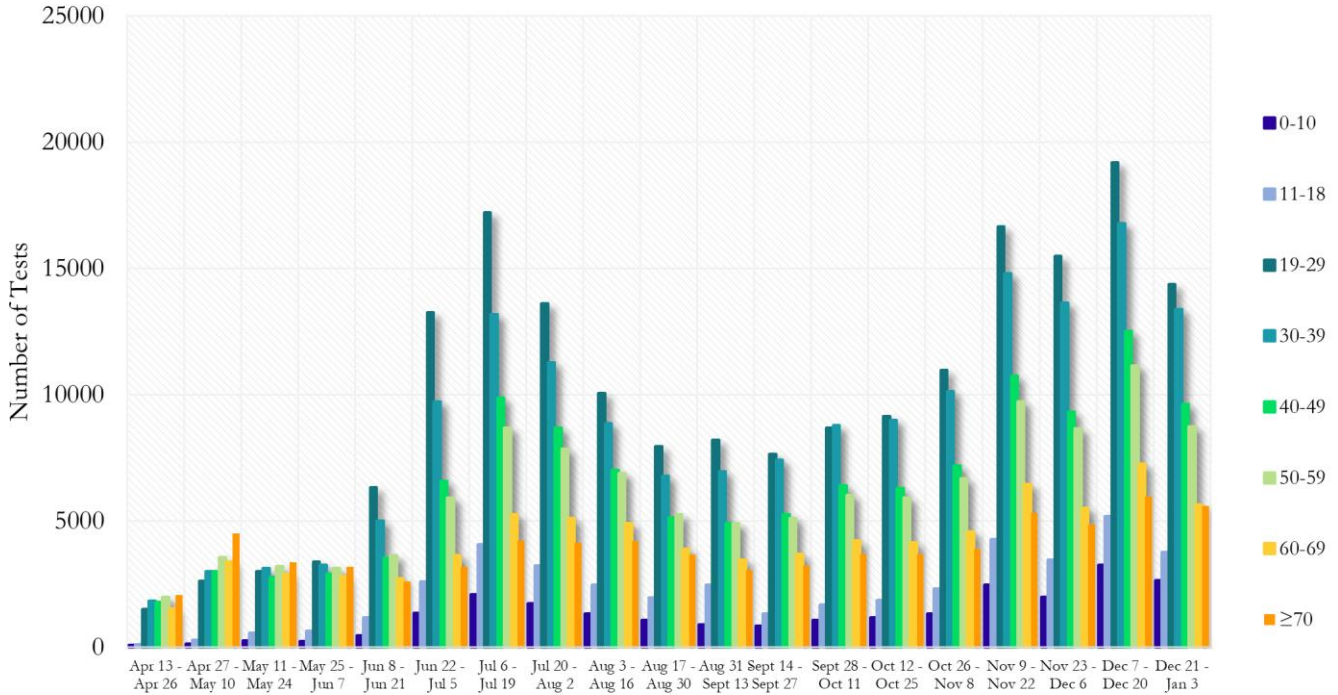
Fig. 22. COVID-19 Deaths in Georgia State Daily (Averaged over 7 days)



* Reported date of death used. Graph above reflects the trend in deaths attributed to COVID-19. The trend is likely to change as more data on deaths among persons with COVID-19 is reported in the state surveillance database.

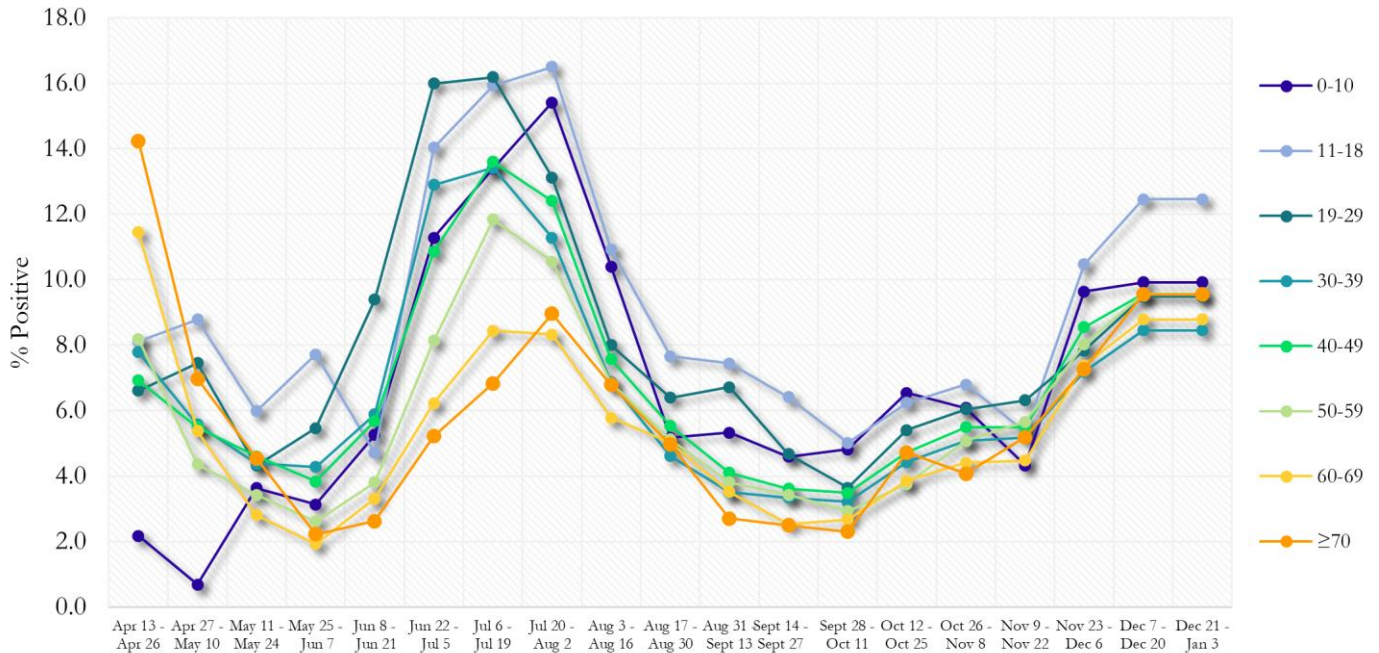
COVID-19 TESTING AND POSITIVITY IN FULTON COUNTY BY AGE AND RACE

Fig. 23. COVID-19 Tests by Age in Fulton County by 14-day Periods



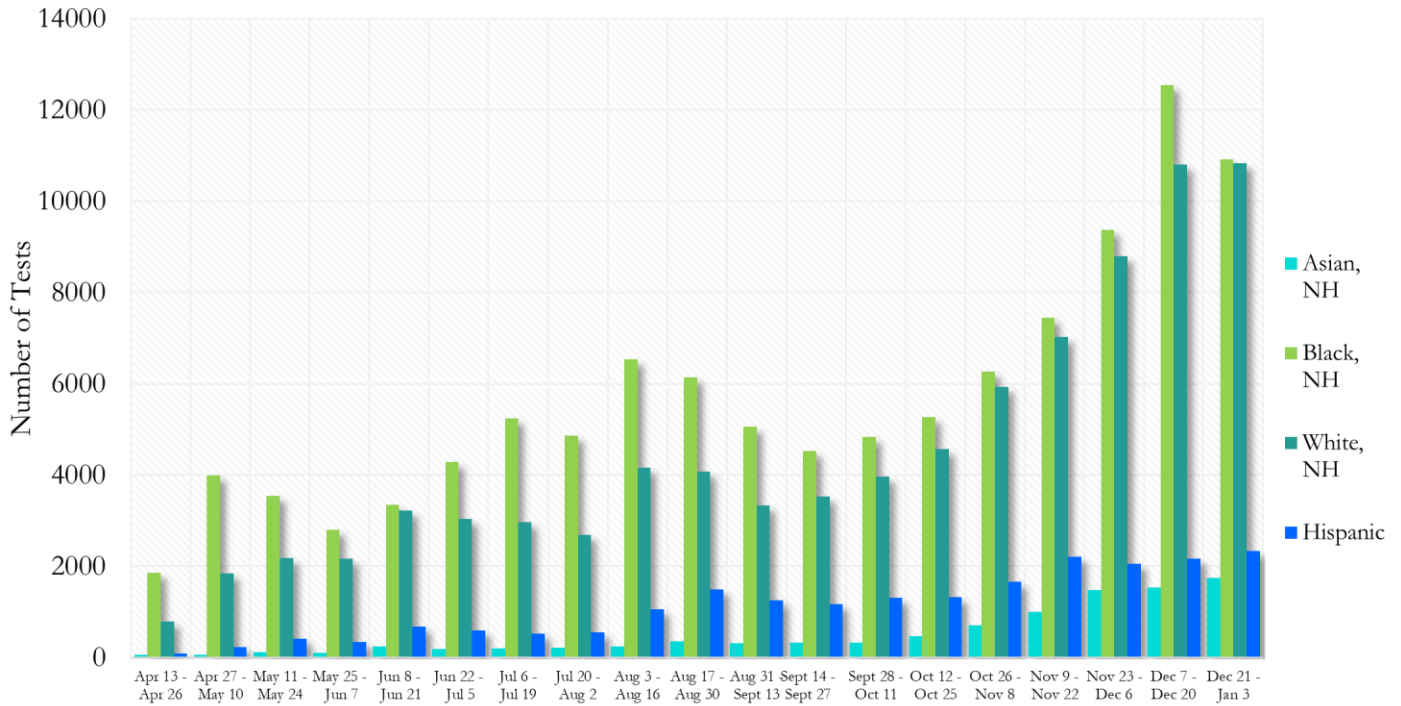
*Data on Polymerase Chain Reaction (PCR) tests only included.

Fig. 24. Percent Positive COVID-19 Tests by Age Group in Fulton County by 14-day Periods



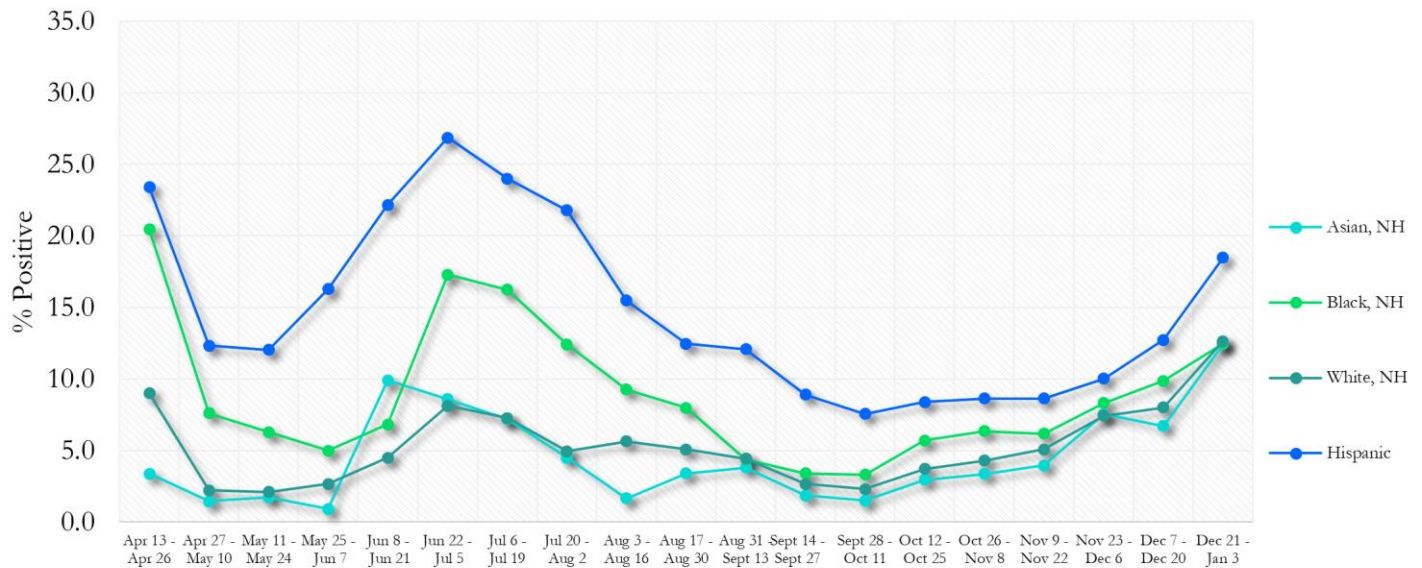
*Data on Polymerase Chain Reaction (PCR) tests only included.

Fig. 25. COVID-19 Tests by Race and Ethnicity in Fulton County by 14-day Periods



*Data on Polymerase Chain Reaction (PCR) tests only included.

Fig. 26. Percent Positive COVID-19 Tests by Race and Ethnicity in Fulton County by 14-day Periods



*Data on Polymerase Chain Reaction (PCR) tests only included.

COVID-19 CASE COUNTS BY ZIP CODE

	Prior (1/8/21)	Current Total (1/12/21)		New Cases (Period: 12/9/20 – 1/5/21) ¹		
	Count	Count	%	Recent 14 d. (Dec 23- Jan 5)	Prior 14 d. (Dec 9- Dec 22)	% change ²
All Fulton	55059	58191	100%	7625	6272	↑ 21.6%
30004	2255	2440	4.2%	412	308	↑ 33.8%
30005	1386	1495	2.6%	254	217	↑ 17.1%
30009	1002	1084	1.9%	135	135	-
30022	3001	3238	0.8%	529	442	↑ 19.7%
30023	15	15	<0.1%	<10	<10	-
30024	50	55	<0.1%	<10	<10	-
30075	2218	2352	4.0%	367	253	↑ 45.1%
30076	2239	2409	4.1%	383	268	↑ 42.9%
30080	<10	<10	<0.1%	0	0	-
30097	862	947	1.6%	180	132	↑ 36.4%
30098	-	-	-	0	0	-
30135	<10	<10	<0.1%	<10	0	-
30138	<10	<10	<0.1%	0	0	-
30139	-	-	-	0	0	-
30213	2066	2185	3.8%	302	192	↑ 57.3%
30268	380	415	0.7%	77	59	↑ 30.5%
30291	1400	1463	2.5%	163	148	↑ 10.1%
30296	150	163	0.3%	26	17	↑ 52.9%
30301	23	22	<0.1%	<10	<10	-
30303	517	531	0.9%	35	32	↑ 9.4%
30305	1758	1874	3.2%	260	229	↑ 13.5%
30306	758	798	1.4%	102	94	↑ 8.5%
30307	367	385	0.7%	43	45	↓ 4.4%
30308	1162	1213	2.1%	132	120	↑ 10.0%
30309	1727	1820	3.1%	242	193	↑ 25.4%
30310	1323	1389	2.4%	174	143	↑ 21.7%
30311	1339	1407	2.4%	149	110	↑ 35.5%
30312	1526	1591	2.7%	165	158	↑ 4.4%
30313	444	451	0.8%	17	37	↓ 54.1%
30314	902	952	1.6%	93	80	↑ 16.3%
30315	1689	1771	3.0%	192	214	↓ 10.3%
30316	669	694	1.2%	86	62	↑ 38.7%
30318	3186	3344	5.7%	391	363	↑ 7.7%
30319	337	368	0.6%	61	38	↑ 60.5%
30321	14	15	<0.1%	0	0	-
30324	1619	1665	2.9%	149	142	↑ 4.9%
30326	533	553	1.0%	53	60	↓ 11.7%
30327	1398	1480	2.5%	246	189	↑ 30.2%
30328	1992	2109	3.6%	337	277	↑ 21.7%
30331	3004	3157	5.4%	358	330	↑ 8.5%
30334	14	14	<0.1%	<10	0	-
30336	134	138	0.2%	10	11	↓ 9.1%
30337	578	594	1.0%	61	45	↑ 35.6%
30338	126	135	0.2%	10	<10	↑ 66.7%
30339	324	345	0.6%	47	<10	↑ 487.5%
30340	35	35	<0.1%	0	<10	↓ 100.0%
30341	37	35	<0.1%	0	<10	↓ 100.0%
30342	2307	2397	4.1%	349	259	↑ 34.7%
30344	1620	1709	2.9%	190	153	↑ 24.2%
30345	25	25	<0.1%	0	0	-

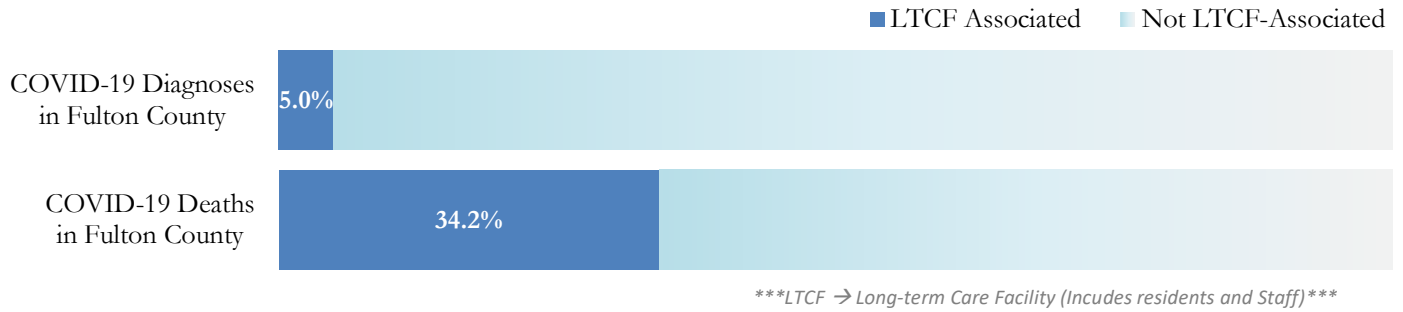
30349	3092	3247	5.6%	350	298	↑ 17.4%
30350	1548	1673	2.9%	273	225	↑ 21.3%
30354	759	802	1.4%	93	70	↑ 32.9%
30358	<10	<10	<0.1%	<10	<10	-
30363	143	148	0.3%	17	16	↑ 6.3%
30374	40	40	<0.1%	<10	<10	-
30606	<10	<10	<0.1%	0	0	-
31131	<10	<10	<0.1%	0	<10	↓ 100.0%
31150	<10	<10	<0.1%	<10	0	-
Unknown	938	974	1.7%	90	73	-

¹**New cases:** Cases diagnosed in most recent 28 days (based on reported dates of positive sample collection). To allow for lag in reporting results of new diagnoses from samples collected in the most recent week, data used for incident diagnoses analyses were moved back by one week. ²**Percent change:** These reflect the percentage increase or decrease of new diagnoses between the 14 days preceding the past 7 days and the 14 days preceding that. Changes in ZIP codes with less than 10 cases in both 2 week intervals are not reported**Data cleaning (either during case interviews or address geo-coding) may lead to reassignment of few cases from one territory to another based on their corrected addresses. These may appear as “decreases” when compared to the previous day’s count. These do not reflect errors in the data collection or analysis process but only reflect the minor day-to-day fluctuations in case counts that arise in an evolving public health database like COVID’s. **Note:** Sharp increases in territorial COVID case counts often reflect new cases diagnosed at long term care facilities located in those territories during facility-wide /mass screening events **All data reported are preliminary and subject to change.**

COVID-19 IN LONG-TERM CARE FACILITIES IN FULTON COUNTY

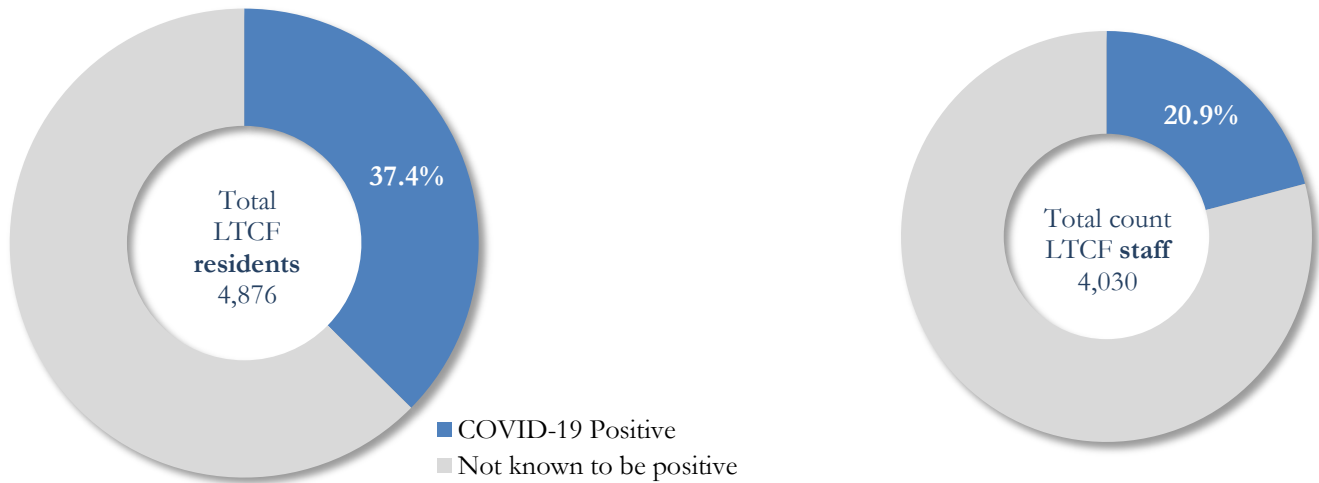
Older persons (aged 65 years and older) and persons who live in nursing homes or other long-term care facilities seem to be at higher risk for developing more serious complications from COVID-19. Extra precautions are recommended for individuals within this risk groups – Centers for Disease Control and Prevention (CDC 2020) <https://www.cdc.gov/coronavirus/2019-ncov/need-extra-precautions/people-at-higher-risk.html>

Fig. 27. COVID-19 Diagnoses and Deaths in Fulton County Associated with Long-Term Care Facilities



COVID-19 POSITIVITY:

Fig. 28. COVID-19 Positivity at 64 reporting Long-Term Care Facilities (LTCF) in Fulton County



COVID-19 Cases, Hospitalizations, and Deaths among 64 reporting Long-Term Care Facilities in Fulton County

	LTCF Residents (n=4,876)			LTCF Staff (n=4,030)		
	Cases	Hospitalizations	Deaths	Cases	Hospitalizations	Deaths
Average (count per fac.) ¹	29	5	4	13	1	<0.1
Median (count per fac.) ¹	11	3	1	9	0	0
Lowest counts	0	0	0	0	0	0
Highest counts	143	48	30	70	8	2
Total Count	1823 (37.4%) ^a	337 (18.5%) ^b	250 (13.7%) ^b	841 (20.9%) ^a	33 (3.9%) ^b	5 (<1.0%) ^b

^a Percentage shown reflects proportion of total residents/staff tested who were positive (i.e. COVID-19 Positivity). | ^b Percentages shown are proportions of persons residents/staff diagnosed with COVID-19 who were hospitalized or died after diagnoses.