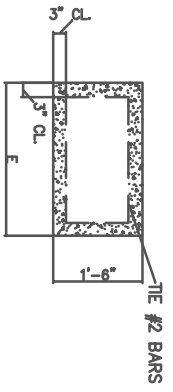


D	E
8"	2' - 2"
10"	2' - 4"
12"	2' - 6"
15"	2' - 10"
18"	3' - 0"
21"	3' - 2"
24"	3' - 6"



- NOTES:
1. PIER LOCATION TO BE DETERMINED BY ENGINEER.
  2. CONCRETE TO BE 3,000 P.S.I.
  3. UNDER UNSTABLE CONDITIONS, ENGR. PLANS FOR PIER DESIGN MUST BE SUBMITTED TO AND APPROVED BY THE PUBLIC WORKS DEPT.
  4. PIERS AT EVERY BELL.
  5. ENGINEER TO SUBMIT DESIGN FOR FOOTING.
  6. STEEL REINFORCEMENT TO BE ASTM DESIGNATION A-15-54T UNLESS OTHERWISE SPECIFIED. BENDS IN BAR TO CONFORM TO A.C.I. STANDARD.
  7. SEE DETAIL 518 FOR CONCRETE PIER & FOOTING INFORMATION.

FULTON COUNTY STANDARD DETAIL 517A  
 CONCRETE PIER & FOOTING DETAIL  
 SHEET 1 OF 2

DATE	REVISIONS	DATE	REVISIONS	DGS/DM/CHKD/CMS	APPROVED:	REW	DATE	FULTON COUNTY	FULTON COUNTY PUBLIC WORKS	DRAWING NO.
8/08	RC						12-2-05		141 PRYOR ST. ATLANTA, GA. 30303	517A
									404-612-7400 FAX: 404-224-0498	