

H = LESS THAN 20' NO PLATFORMS
 H = 20' ONE PLATFORM IN CENTER OF MANHOLE DEPTH

H = GREATER THAN 20'

8'-10' MAX SPACING

12" MIN

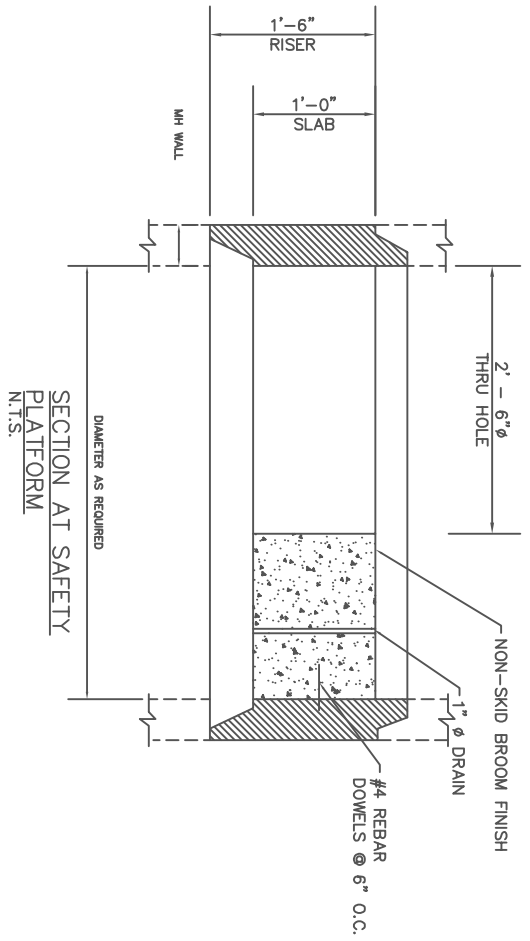
12" MIN

6" MIN.

MH CROSS SECTION
 N.T.S.

#57 STONE FOR LEVELING

PIPE AND INVERTS OMITTED



SECTION AT SAFETY PLATFORM
 N.T.S.

NOTES:

1. A DEEP MANHOLE IS CONSIDERED TO BE GREATER THAN 24'.
2. SAFETY PLATFORMS ARE REQUIRED ON ALL MANHOLES EQUAL TO OR GREATER THAN 20' IN DEPTH.
3. SAFETY PLATFORMS ARE TO BE PLACED A MAX. DISTANCE OF 8'-10' APART.
4. PLATFORMS ARE TO BE DESIGNED TO OBTAIN A STRENGTH OF 4000 PSI IN 28 DAYS.
5. MANHOLE AND PLATFORM DESIGN SHALL CONFORM TO A.S.T.M. SPECS. C478 LATEST EDITION.
6. REINFORCING STEEL HAS A MIN. YIELD STRENGTH OF 60,000 PSI.
7. SAFETY PLATFORM SLAB IS DESIGNED FOR A CONCENTRATED LOAD (P) AS FOLLOWS:
 P(LB)
 12,000
 16,000
 8,000
8. SAFETY PLATFORM IS TO BE PLACED AT MIDDLE OF A MANHOLE OVER 20' IN DEPTH.
9. TWO PLATFORMS TO BE PLACED AT EQUAL DISTANCE AT A MANHOLE DEPTH OF 24'.
10. SAFETY PLATFORM IS TO BE PRECAST CONCRETE OR APPROVED EQUAL.
11. ALTERNATE OPENINGS IN SAFETY PLATFORMS AS INDIVIDUAL DESCENDS.
12. MANHOLES IN EXCESS OF 24' IN DEPTH SHALL BE PRE-APPROVED BY PUBLIC WORKS AND HAVE SAFETY PLATFORMS WITH 8'-10' SPACING.

FULTON COUNTY STANDARD DETAIL 112
 SAFETY PLATFORM FOR DEEP
 PRECAST MANHOLES

DATE	REVISIONS	DATE	REVISIONS
8/08	NRR		

DGS/DRN/CHKD:REB
 APPROVED: REW
 DATE: 12-2-05



FULTON COUNTY PUBLIC WORKS
 141 PRYOR ST. ATLANTA, GA. 30303
 404-612-7400 FAX: 404-224-0498

DRAWING NO. 112