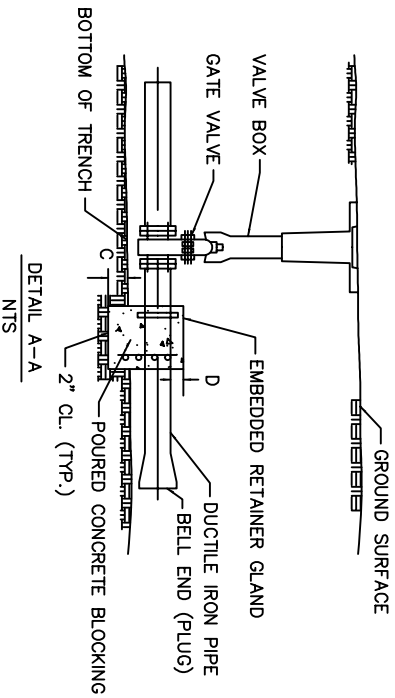
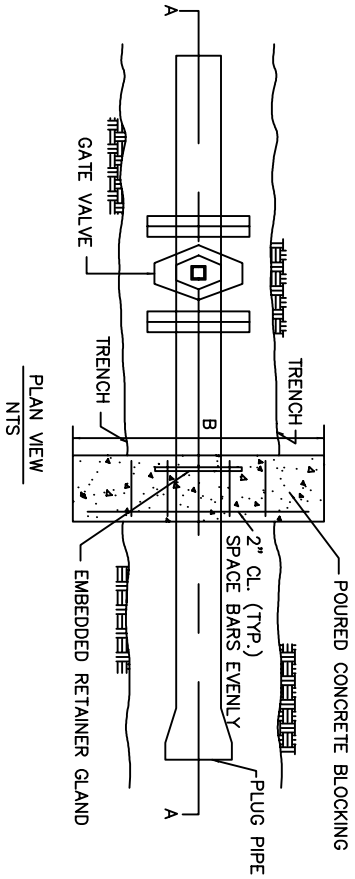
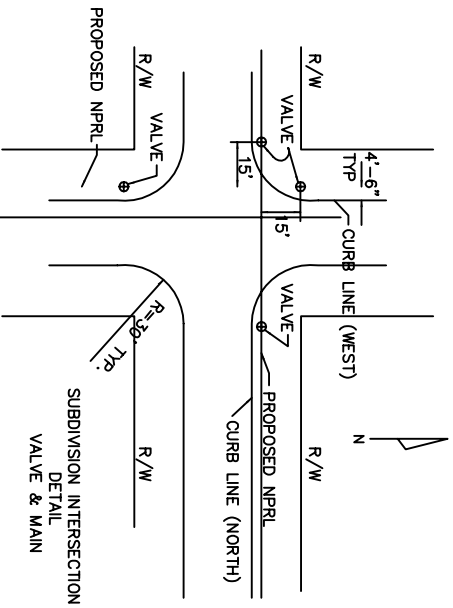


- NOTES:
1. ANCHOR BLOCKING DETAIL TO BE USED AT THE END OF ANY COUNTY ROAD WHERE NPRL MAY BE EXTENDED AT A FUTURE DATE
 2. ALL CONCRETE TO BE 3000 PSI
 3. ALL STEEL TO BE 60,000 PSI



BLOCKING DETAILS

PIPE SIZE	A (IN.)	B (IN.)	C (IN.)	D (IN.)	REQD. STEEL (EACH WAY)
8"	10	32	12	8	4 - #4
10"	12	40	15	10	4 - #4
12"	14	54	24	12	4 - #4
16"	18	60	30	16	6 - #4



FULTON COUNTY STANDARD DETAIL 133
 MAIN EXTENSION BLOCKING DETAILS
 SUBDIVISION INTERSECTION DETAIL VALVE MAIN

DATE	REVISIONS	DATE	REVISIONS
8/08	NRR		

DOS/DRV/CHKD/REB
 APPROVED: _____
 DATE: 12-2-05



FULTON COUNTY PUBLIC WORKS
 141 PRYOR ST. ATLANTA, GA. 30303
 404-612-7400 FAX: 404-224-0498

DRAWING NO. 133