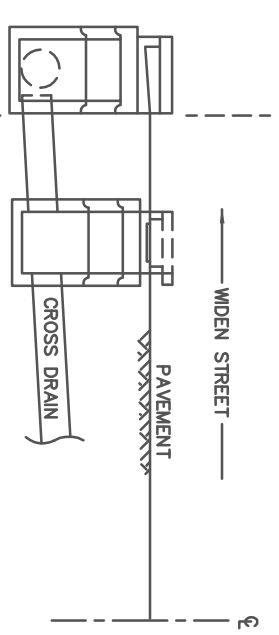


ALL PIPES WITHIN R/W SHALL BE RCP.
THIS INCLUDES PIPE PARALLEL TO ROAD.
SEE STANDARD NO. 511
FOR DIMENSION TABLE



NOTE:
REMOVE EXIST. TOP & THROAT OF CATCH BASIN
ADD BRICK COURSES FOR GRADE ADJUSTMENT
COMPLETE BY ADDING STANDARD MANHOLE
FRAME & COVER (#460 LBS) AND SET IN 8"
MIN. REINFORCED CONC. SLAB.

STREET WIDENING
CONVERTING CATCH BASIN TO MANHOLE

FULTON COUNTY STANDARD DETAIL 513

DROP INLETS, BRICK
&
CATCH BASIN EXTENSION

DATE	REVISIONS	DATE	REVISIONS
8/08	RC		

DGS/DM/CHKQ:CMS
APPROVED: REW
DATE: 12-2-05



FULTON COUNTY PUBLIC WORKS
141 PRYOR ST. ATLANTA, GA. 30303
404-612-7400 FAX: 404-224-0498

DRAWING NO.
513