

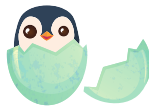


K-2 SCHOOL OUTREACH 2021-2022

- **FREE** of charge and offered to public and private schools in Fulton County
- **40-60 minutes** long and taught at your school
- **Aligned to Georgia Standards of Excellence**
- **Interactive** and can be adapted to meet the needs of your group

KINDERGARTEN

When I Grow Up



Students discover similarities and differences in the features of different animals and of the same animals at various stages of life.

GSE: SKL2

FIRST GRADE

Parts of a Plant



Students create a model of plant and learn the functions of each of its parts in obtaining the plant's basic needs.

GSE: S1L1

SECOND GRADE

Life Cycles



Students explore simple and complex life cycles and discover the role of clean water in the life cycle of the dragonfly.

GSE: S2L1

Fashion a Forest



Students discuss the living and nonliving parts of a habitat and observe the differences between the two.

GSE: SKL1

My Friend in the Backyard



Students learn about the benefits and the basic needs of trees through an interactive musical story.

GSE: S1L1

Sum of the Parts



Students discover how human activities can have both positive and negative impacts on our environment.

GSE: S2E3



3-5 SCHOOL OUTREACH 2021-2022

- **FREE** of charge and offered to public and private schools in Fulton County
- **40-60 minutes** long and taught at your school
- **Aligned to Georgia Standards of Excellence**
- **Interactive** and can be adapted to meet the needs of your group

THIRD GRADE

Paper Watershed



Students create a watershed model to examine sources of pollution and their effects on the environment.

GSE: S3L2

Dealing with Drought

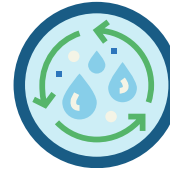


Students explore Georgia native species and discover how some are adapted to survive during drought.

GSE: S3L1

FOURTH GRADE

Incredible Journey



Students play an interactive game to discover the many paths water can take in the water cycle.

GSE: S4E3

Monarch Mishaps



Students investigate the various roles of organisms in an ecosystem with an interactive activity.

GSE: S4L1

FIFTH GRADE

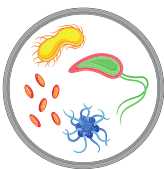
Disease Detectives



Students learn about water and public health by following clues to discover the source of a mysterious illness in 19th century London.

GSE: S5L4

Micro Management



Students learn about the role of microorganisms in water and wastewater treatment processes.

GSE: S5L4